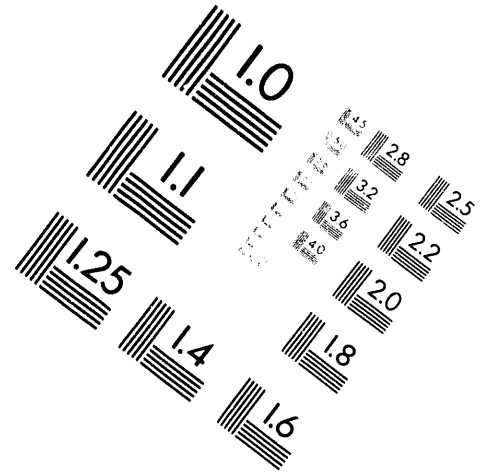
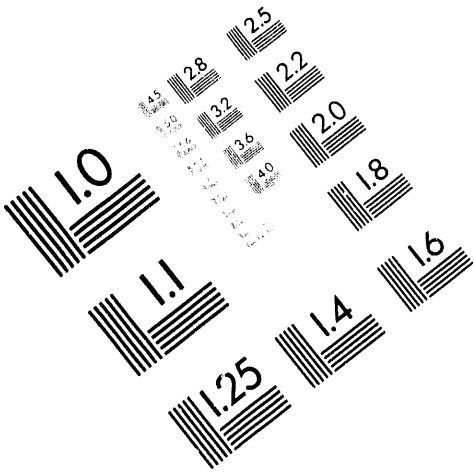




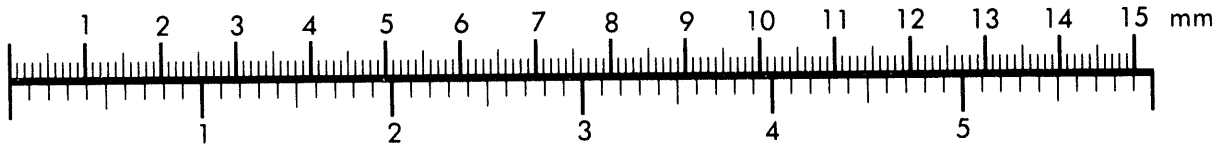
AIM

Association for Information and Image Management

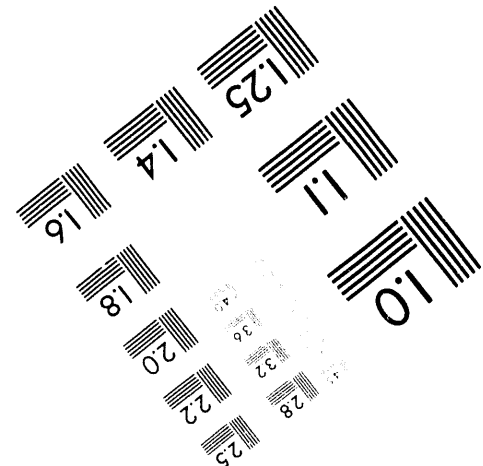
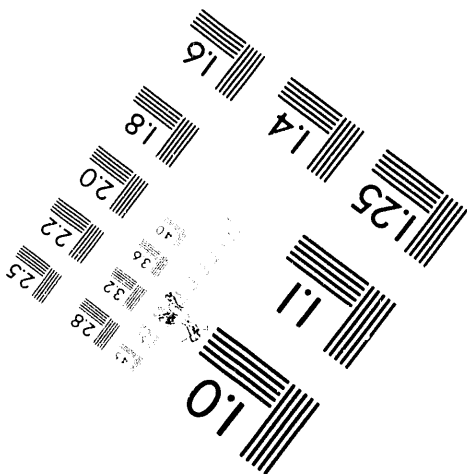
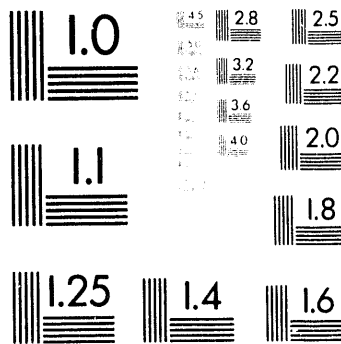
1100 Wayne Avenue, Suite 1100
Silver Spring, Maryland 20910
301/587-8202



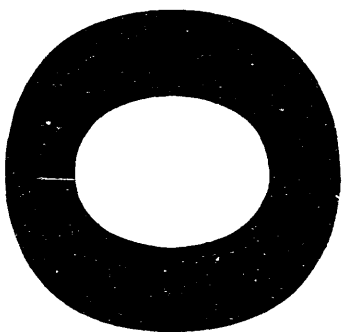
Centimeter



Inches



MANUFACTURED TO AIM STANDARDS
BY APPLIED IMAGE, INC.



**Summary of Beam Coupling Impedance Measurements and
Simulations of Collider Liner with Pumping Holes or Slots**

L. Walling, E. D. Ruiz, and N. Spayd

Superconducting Super Collider Laboratory*
2550 Beckleymeade Ave.
Dallas, TX 75237

April 1994

*Operated by the Universities Research Association, Inc., for the U.S. Department of Energy under Contract
No. DE-AC35-89ER40486.

MASTER

DISTRIBUTION OF THIS DOCUMENT IS UNLIMITED

Y

Summary of Beam Coupling Impedance Measurements and Simulations of Collider Liner with Pumping Holes or Slots

L. Walling, E. D. Ruiz, and N. Spayd

Abstract

We report the results of measurements using the wire method and numerical simulations using the code HFSS (High-Frequency Structure Simulator) of the beam coupling impedance of the proposed liner for the collider ring of the SSC. We compare the results of the measurements and simulations to analytical estimates by R. Gluckstern¹ and S. Kurennoy,² and conclude that the additional coupling impedance introduced by a liner with pumping holes can be acceptable.

1.0 INTRODUCTION

To avoid reduction of beam lifetime due to photodesorption and to shield the SSC collider ring bore tube from synchrotron radiation, it is proposed to include a holed liner within the bore tube which intercepts the synchrotron radiation while allowing the required vacuum to be achieved. Discontinuities in the liner, such as pumping holes or slots interrupt the beam image currents, resulting in beam coupling impedance. In addition, electromagnetic coupling through the holes in the liner allow power to circulate between the liner and bore tube in synchronism with the beam. This TEM wave would couple back into the beam pipe, thereby possibly presenting an unacceptably high impedance. The coupling impedance of pumping holes and slots is estimated analytically, and numerical and measurement results are presented.

2.0 ANALYTICAL ESTIMATION

Analytical determination of the coupling impedance of small apertures in metallic walls has been studied extensively, but only recently has their collective coupling impedance in a beam tube liner been described analytically. The pumping holes or slots in the liner excite electric and magnetic dipoles which scatter energy back into the beam pipe and couple some energy through the aperture into the coaxial region formed between the liner and bore tube. Gluckstern calculates the impedance due to holes in a liner including the effect of wall thickness and the outer coaxial region:

$$Z_{\parallel} = \frac{jZ_o kP}{8\pi^2 b^2} \left[\Psi_{in} - \chi_{in} - \frac{(\Psi_{out} - \chi_{out})^2}{\Psi_{in} - \chi_{in} - j8\pi b^2 \left(\frac{\alpha}{k}\right) L \ln\left(\frac{a}{b}\right)} \right] \quad (1)$$

and

$$Z_{\perp} = \frac{Z_{\parallel}}{n} \left(\frac{2R}{b^2}\right) \quad (2)$$

where

$$\frac{\alpha}{k} \ln\left(\frac{a}{b}\right) = \frac{1}{4} \left(\frac{\delta_a}{a} + \frac{\delta_b}{b}\right)$$

and Ψ_{out} , χ_{out} , Ψ_{in} , and χ_{in} are the magnetic susceptibility and electric polarizability for the inside and outside of the liner, Z_o is 377 ohms, $k = 2\pi f/c$, P is the number of holes, b is the liner radius, a is the bore tube radius, δ_a and δ_b are the skin depth for the bore tube and outer surface of the liner, respectively, L is the average axial hole spacing, and R is the ring radius. For small pumping holes, the contribution to the coupling impedance due to power circulating outside the liner is shown by Gluckstern to be negligible.

3.0 SIMULATION AND MEASUREMENT

First, the triaxial geometry for low-frequency longitudinal impedance was simulated. The beam pipe had a radius of 16.5 mm and thickness of 1 mm. We found that the outer coax contributed insignificantly to the coupling impedance, so to speed up the simulations the outer coax was eliminated. Since holes this size represent a very small impedance, it was necessary to detect minute phase shifts due to the holes. The simulations were converged until the uncertainty in the

phase was much smaller than the phase shift $(\theta - \theta_0)$, where θ_0 , the electrical length of the reference liner, was calculated using c specified to about 5 decimal places. However, there was an error that could not be extracted by further adaptive passes when merely subtracting the length of the reference liner. This phase shift is due to small errors in the mapping of the 3-D tetrahedrons to the 2-D port surfaces. Another order of magnitude in phase accuracy was obtained by modeling the holes and the beam tube as separate elements, meshing and running the problem with both specified as vacuum, then, without changing the mesh, re-specifying the holes as metal and rerunning over the frequency range. This was used as the "reference pipe" to normalize the data, and removed the port mapping errors as well as the baseline transmission.

3.1 Longitudinal Impedance

Measurements were made of a liner 2 meters in length with 1010 pumping holes or 160 rounded slots using the wire technique.³ Initially, these were made with a center conductor of diameter 12.7 mm, however, simulation of the measurement using HFSS revealed that a 3.2 mm diameter center conductor yielded more accurate results. For this reason, the longitudinal impedance data shown in Figure 1 was made with the 3.2 mm center conductor. In addition, measurements confirmed that the presence of the outer triaxial region did not significantly affect the observed impedance data so later measurements were made without a bore tube.

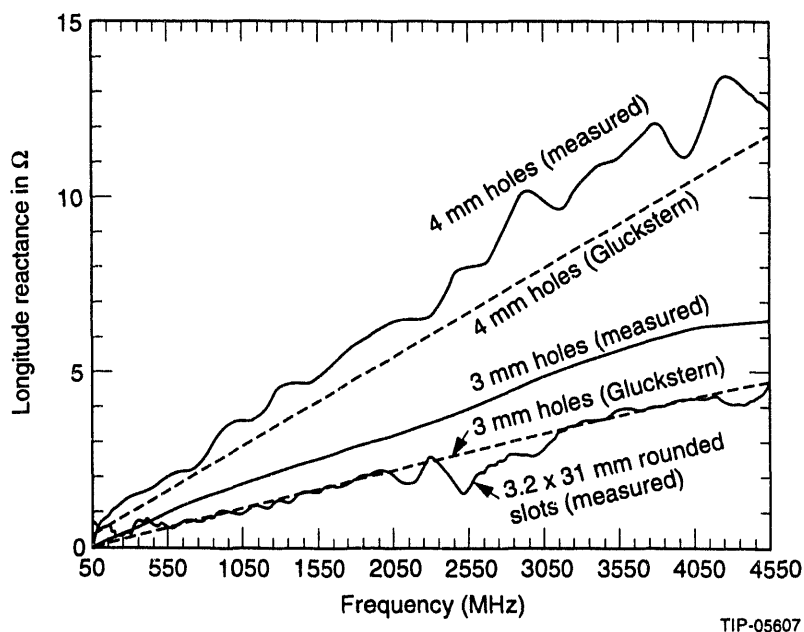


Figure 1. Measured Longitudinal Reactance of 1010 3-mm and 4-mm Diameter Holes and 160 Rounded Slots.

Many variations of liner holes were simulated. These included variation in the number of holes axially from 2 to 20, variation of the number of holes longitudinally from 2 to 20, and varying the depth of the holes. These simulations confirmed that for low frequencies, the longitudinal impedance of the holes add, and the impedance is reduced by the wall thickness, as theory

predicts. Simulations were also performed with small and large center conductors and compared to measurement results for the same parameters. We found very good agreement between HFSS simulation of the wire technique and wire measurements. Extensive simulations were also performed for comparison with MAFIA simulations done by Chou and Barts.⁴

To reduce the low-frequency beam impedance, short slots are being considered. Simulations were run to study the influence of the shape of the slot and measurements were performed using the wire technique on 3.2×31 mm rounded slots. The results of longitudinal impedance measurements and simulation at 5.0 GHz for holes and slots are shown in Table 1. A large savings in low-frequency impedance is achieved by using slots; the high-frequency behavior should be acceptable for short slots.

Table 1. Longitudinal Impedance of Various Hole and Slot Geometries (2 mm \times 6 mm slots) at 5.0 GHz ($b = 16$ mm, thickness = 1 mm).

Slot Shape	Longitudinal Impedance per Slot (Ω)	Longitudinal Impedance Area (Ω/mm^2)	Z/n Scaled to Number Required for Vacuum (Ω)	Number of Slots/m Required for Vacuum (m^{-1})
Rectangular Slot (2 \times 6 mm)	0.0038	1.9×10^{-4}	0.077	340
Rounded Slot (2 \times 6 mm)	0.0027	1.7×10^{-4}	0.058	361
Rounded Slot (3.2 \times 31.2 mm)	0.0172	1.7×10^{-4}	4.02×10^{-2}	39
Elliptical Slot (2 \times 6 mm)	0.0017	1.3×10^{-4}	0.042	416
Square Hole (2 \times 2 mm)	0.0021	5.4×10^{-4}	13.76×10^{-2}	1092
Hole (dia = 3.0 mm)	0.0075	10.61×10^{-4}	27.00×10^{-2}	600
Hole (dia = 2.0 mm)	0.0012	3.8×10^{-4}	11.13×10^{-2}	1546
Hole (dia = 1.5 mm)	0.00050	2.8×10^{-4}	8.97×10^{-2}	2990
Hole (dia = 1.0 mm)	0.00015	1.9×10^{-4}	7.50×10^{-2}	8335

3.2 Transverse Impedance

The transverse impedance was measured using two parallel center conductors driven 180° out of phase relative to each other (odd mode). The spacing between the 3.2-mm diameter conductors is 16 mm. Holes and slots are distributed in rings with 10 holes or slots azimuthally per ring.

Transverse impedance for various hole and slot geometries was also simulated and compared to calculations by Kurennoy for a zero-thickness liner. Kurennoy predicts a factor of 2 reduction in transverse impedance when there are 3 or more holes in one radial cross-section. We find results half of Kurennoy's predictions, which is consistent when the reduction due to wall thickness is taken into account. Simulation results are shown in Tables 2 and 3 while measurement results are shown in Figure 2.

**Table 2. Transverse Impedance of Various Hole and Slot Geometries (2 mm × 6 mm slots)
(*b* = 16 mm, thickness = 1 mm).**

Slot Shape	Transverse Impedance per Slot (Ω/m)	Transverse Impedance Area ($\Omega m/mm^2$)	Z_{\perp}/m Scaled to Number Required for Vacuum (Ω/m^2)	Number of Slots/m Required for Vacuum (m^{-1})
Rectangular Slot (2 × 6 mm)	0.22	0.018	75	340
Rounded Slot (2 × 6 mm)	0.15	0.013	54	361
Rounded Slot (3.2 × 31.2 mm)	0.88	0.009	34.3	39
Elliptical Slot (2 × 6 mm)	0.15	0.015	62	416
Square Hole (2 × 2 mm)	0.17	0.042	185.6	1092
Hole (dia = 3.0 mm)	0.31	0.043	186.0	600
Hole (dia = 2.0 mm)	0.087	0.028	134.5	1546
Hole (dia = 1.5 mm)	0.037	0.021	110.6	2990
Hole (dia = 1.0 mm)	0.011	0.014	91.7	8335

Table 3. Transverse Impedance of 3-mm Diameter Round Hole at 1.0 GHz.

Number of Holes Axially	HFSS Transverse Impedance (Ω/m) [1-mm Thick Liner]	Kurennoy Transverse Impedance (Ω/m) [No Wall Thickness Correction]
2	1.21	2.62
8	2.43	5.24
16	4.91	10.5

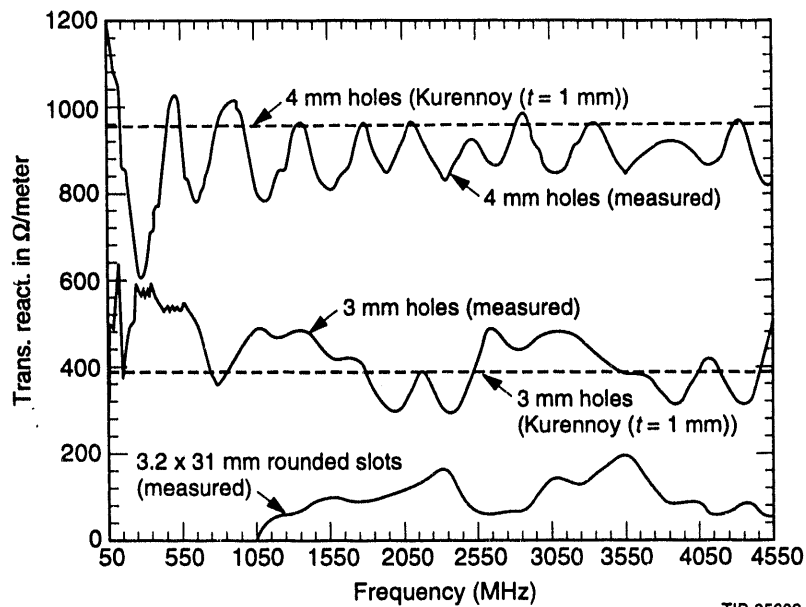


Figure 2. Measured Transverse Reactance of 1010 3-mm and 4-mm Diameter Holes and 160 Rounded Slots.

4.0 LINER LEAKAGE

Measurements of leakage were made using a triaxial impedance measurement technique.⁵ The test liner is 2-meters long, with 1010 holes in the center 1 meter, and 0.5 meters of solid pipe on both ends. The outer bore tube has a radius of 23 mm, while the liner has an inner radius of 16 mm and is 1-mm thick. The center conductor diameter was 12.7 mm for the leakage measurements. To measure leakage, the center conductor is placed on axis within the liner and the transmission through the pumping holes, S_{41} , is measured. A transmission measurement is also made through the coaxial regions formed between the liner and bore tube (S_{43}), and between the center conductor and liner (S_{21}), to correct the effects of hardware mismatches and multiple reflections in the triax on the S-parameters. S_{41} is time-gated, and divided by the square root of gated S_{43} and S_{21} . Liners with holes of diameter 1 mm, 2 mm, and 3 mm were measured. Results of leakage measurements and simulation are shown in Figure 3.

To estimate the contribution to the coupling impedance of the TEM wave traveling in the region outside the liner and 'feeding back' on to the beam, a two-step calculation was performed. A triaxial model representing 20 holes axially and 22 longitudinally, was driven at the inner coax on one side. The other side has enough blank pipe forming the outer coax such that the maximum radial electric field, E_0 , due to forward-leaked power could be determined. Thus, the ratio E_0/I was determined where I is the current on the center conductor within the liner. Then, the center conductor is removed from the model, the outer coax is driven, and the ratio of E_z , the maximum longitudinal electric field on axis, to the radial electric field in the outer coax is determined. This ratio is then multiplied by the scaling ratio I_{att}/l to yield the coupling impedance, where l is the length of the liner segment with holes in it, and I_{att} is the attenuation length in the outer coax.

Numerical simulations were performed for holes of 2-mm, 3-mm, and 4-mm diameter. This inquiry confirmed that this contribution was much smaller than the inductive impedance for reasonably-sized holes at low frequencies.

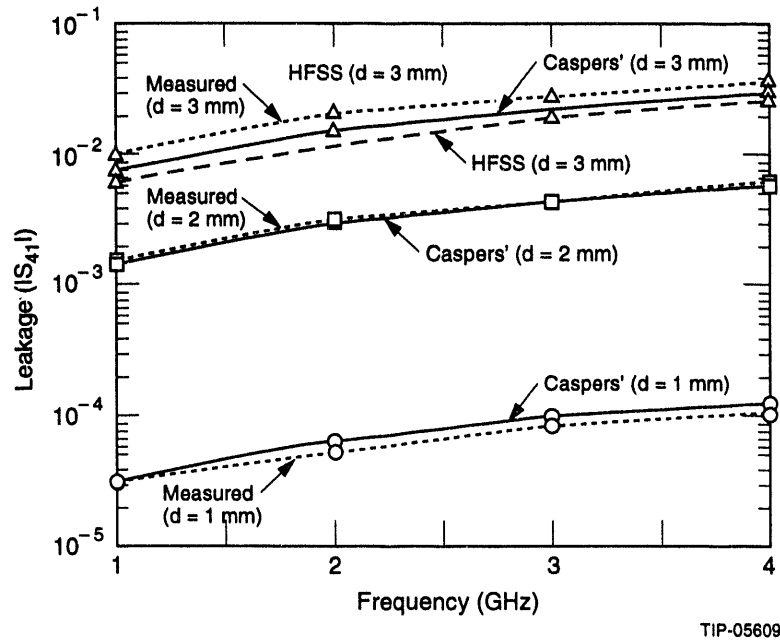


Figure 3. Leakage through a 1-mm Thick Liner with 1010 Holes of Various Diameters.

5.0 DISCUSSION OF RESULTS

The simulations and the measurements both yielded low-frequency longitudinal impedances which are in good agreement with Gluckstern's thickness corrected estimate for the longitudinal impedance of round holes. Transverse impedance for round holes fit Kurennoy's theory well. Slots reduce the impedance but must be kept short to avoid the potentially large coupling impedance caused if the slots themselves become resonant.

We have investigated the high-frequency coupling impedance using TM_{01} excitation.⁶ Because of disagreement between HFSS and MAFIA simulations done by Chou and Barts, we plan to measure the high-frequency impedance.⁷

6.0 CONCLUSION

We have performed measurements and simulation of the coupling impedance of a liner in the collider ring of the SSC. Using HFSS we were able to study various hole and slot configurations. Good agreement has been demonstrated between HFSS, laboratory measurements, and theory. Based on these simulations and measurements, the coupling impedance of a liner in the collider ring *can* be acceptable.

REFERENCES

1. R. L. Gluckstern, "Coupling impedance of many holes in a liner within a beam pipe," CERN SL/92-05 (AP) (1992).
2. S. Kurennoy, "Beam Coupling Impedance of Holes In Vacuum-Chamber Walls," IHEP, Protvino. No. 92-84, 1992.
3. L. S. Walling, D. E. McMurry, D. V. Neuffer, and H. A. Thiessen, "Transmission-Line Impedance Measurements for an Advanced Hadron Facility," *Nucl. Instr. and Meth.* **A281** (1989) 433.
4. W. Chou and T. Barts, "Wakefield and Impedance Studies of a Liner Structure Using MAFIA," *Proc. of the 1993 Computational Accelerator Physics Conference*, Pleasanton, CA.
5. F. Caspers, "Triaxial line technique," in *Proc. of the Coupling Impedance Measurement Workshop*, Argonne National Laboratory-APS, August 12-13, 1991.
6. E. Ruiz, L. Walling, and Y. Goren, "Liner Impedance Calculations Using HFSS," *Proc. of the 1993 Computational Accelerator Physics Conference*, Pleasanton, CA.
7. G. Lambertson, A. F. Jacob, R. A. Rimmer, and F. Voelker, "Techniques for Beam Impedance Measurements Above Cutoff," LBL-28190.

DATE

FILMED

6/14/94

END

