

EVENTS AT

CÒSMICA MEXICAN FOOD & BAR

at THE REVOLUTION HOTEL
40 BERKELEY STREET
BOSTON MA 02116
WWW.COSMICABOSTON.COM

THE BEEHIVE EATERY, BAR, LIVE MUSIC

541 TREMONT STREET
BOSTON MA 02116
WWW.BEEHIVEBOSTON.COM

We know that sometimes, an occasion calls for something special
- that's why we're happy to offer private events and semi-private
dining options at our establishments and beyond.

Our Venues

COSMICA at the Revolution Hotel

*up to 250+ guests in main room,
170 guests in Plastic Flamingo Room & 125 on our patio*

THE BEEHIVE

up to 400+ guests & 100 on our patio

THE CYCLORAMA at the Boston Center for the Arts

up to 1,000 guests

FRONTDESK@BEEHIVEBOSTON.COM

HELLO@COSMICABOSTON.COM

LOOKING FOR MORE VENUE OPTIONS?

THE BEEHIVE CATERS

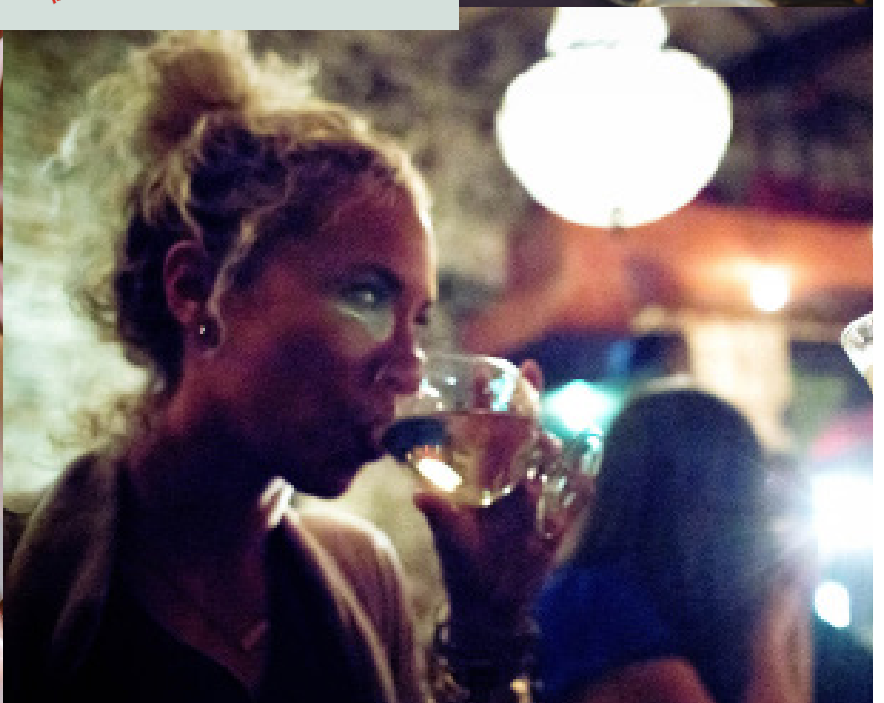
The Beehive Caters brings the world-famous Beehive experience to any venue. We cater events across the Boston area and beyond, and are here to handle every detail of your event, with a focus on providing warm, generous service and creating an intimate environment where all are welcome.

FOR MORE INFORMATION ON OFF-SITE CATERING OPTIONS PLEASE VISIT

WWW.BEEHIVECATERS.COM



THE BEEHIVE



EVENTS AT **THE BEEHIVE**

COCKTAIL PARTY

OUR COCKTAIL PARTY PACKAGE IS AVAILABLE FOR 2 HOURS OF SERVICE
WITH A VARIETY OF SUPPLEMENTAL ADD-ON STATIONS.

PASSED CANAPÉS

ONE HOUR RECEPTION:

3 SELECTIONS \$27 PER PERSON, 4 SELECTIONS \$32 PER PERSON

TWO HOUR RECEPTION:

4 SELECTIONS \$47 PER PERSON, 5 SELECTIONS \$52 PER PERSON

STATIONS/PLATTERS

MARKET TABLE \$24/PERSON

ARTISANAL CHEESES, CHARCUTERIE, PICKLED VEGETABLES AND SEASONAL CRUDITÉS

MEDITERRANEAN TABLE \$24+/PERSON

DIPS, MARINATED VEGETABLES, SALADS

SEAFOOD TABLE MARKET PRICE

SEASONAL RAW BAR, CEVICHERS, OYSTERS, SHRIMP, TARTARES, CRUDOS

BITE SIZED SNACKS

CHICKEN WINGS, SLIDERS, SKEWERS, RIBS, APPETIZERS

DINNER OR BRUNCH PARTY

FAMILY STYLE DINNER FROM \$75/PERSON

INCLUDES 2 APPETIZERS, 2 ENTREES AND 2 SIDES ALL SHARED AT THE TABLE.

BUFFET DINNER FROM \$70/PERSON

INCLUDES 2 ENTREES AND 3 SIDES SERVED AT A STATION.

FAMILY STYLE BRUNCH FROM \$55/PERSON

INCLUDES 2 APPETIZERS, 2 ENTREES AND COFFEE/TEA ALL SHARED AT THE TABLE.

GROUP BEVERAGE PACKAGES

OPTIONAL BEVERAGE SERVICE, PRICED PER PERSON.

BEER, WINE & SANGRIA \$38-TWO HOURS \$48-THREE HOURS

ADD HOUSE SPIRIT & COCKTAILS +\$10 PER HOUR

TOAST OF BUBBLY \$10/PERSON

FRONTDESK@BEEHIVEBOSTON.COM
HELLO@COSMICBOSTON.COM



CÒSMICA

MEXICAN FOOD & BAR



EVENTS AT CÒSMICA

THE
REVOLUTION
HOTEL

COCKTAIL PARTY

OUR COCKTAIL PARTY PACKAGE IS AVAILABLE FOR 2 HOURS OF SERVICE
WITH A VARIETY OF SUPPLEMENTAL ADD-ON STATIONS.

Aperitivos

ONE HOUR RECEPTION:

3 SELECTIONS \$24 PER PERSON, 4 SELECTIONS \$30 PER PERSON

TWO HOUR RECEPTION:

4 SELECTIONS \$38 PER PERSON, 5 SELECTIONS \$45 PER PERSON

Stations

GUACAMOLE, CHIPS, SALSA \$14/PERSON GF VG
RED ONION, SMOKED JALAPEÑO, QUESO FRESCO, TOMATO, PUMPKIN SEEDS

SPANISH & MEXICAN CHEESE PLATTER \$20+/PERSON
CHEESE, PICKLED VEGETABLES AND SEASONAL CRUDITÉS

ADD CHARCUTERIE/CURED MEATS \$6 TO \$12+/PERSON

SEAFOOD & CEVICHE BAR STARTING AT \$25/PERSON (1 HOUR OF SERVICE)
INCLUDES 2 ITEMS, FOR EXAMPLE: MEXICAN SEAFOOD COCKTAIL, TUNA CEVICHE
OR SEASONAL FISH CRUDO

BITE SIZED SNACKS

CHICKEN WINGS, QUESADILLAS, SKEWERS, TAQUITOS

DINNER PARTY

FAMILY STYLE DINNER FROM \$65/PERSON
INCLUDES 2 APPETIZERS, 2 ENTREES AND 2 SIDES ALL SHARED AT THE TABLE.

TACO BUFFET PARTY FROM \$55/PERSON
INCLUDES 3 PROTEINS, TWO SIDES, SALSAS

EXECUTIVE BUFFET DINNER FROM \$75/PERSON
INCLUDES 2 ENTREES AND 3 SIDES SERVED AT A STATION.

GROUP BEVERAGE PACKAGES

OPTIONAL BEVERAGE SERVICE, PRICED PER PERSON.

BEER, WINE & SANGRIA \$38-TWO HOURS \$48-THREE HOURS
ADD HOUSE SPIRIT DRINKS AND MARGARITAS +\$10 PER HOUR

FRONTDESK@BEEHIVEBOSTON.COM
HELLO@COSMICBOSTON.COM

STAFFING

We will create a customized staffing proposal based on the particulars of your event. Including the duration, guest count and complexity of the menu and event logistics. Staffing costs do not count toward Food & Beverage (F&B), minimums and associated administration fees and service charges.

EVENT PLANNING

Event planning services can be provided, in addition to standard staffing, at a rate of \$125/hr.

LIVE MUSIC ENTERTAINMENT

We can book and coordinate the most appropriate live performers for your event utilizing our network of top-tier artists. Fees for use of our live music facilities and equipment range from \$800-5,000+. In most cases, a sound engineer will be required for live performance at a rate of \$150/hour.

WEDDING CEREMONY FEE

Staffing and logistical fee for an on-site wedding ceremony are \$5,000 in addition to any required furniture rentals.

ADMINISTRATIVE FEE

All events are subject to a 9% administration fee which is based on the full cost of the event. The administrative fee is not a gratuity and serves to offset ancillary expenses associated with the planning and administration of this event and helps ensure a better wage for our non-tipped team members.

SERVICE FEE OR TIP

All events are subject to an 18% service charges (taxable) which is based on full food, beverage and room rental costs. This fee is distributed to wait staff employees, service employees, or service bartenders. The service fee can be waived if the client chooses to tip (non-taxable) service staff 18% or greater. Please let your event manager know which option you choose.

VALET PARKING

Valet services can be arranged in advance of your event. Guests may also park in several convenient, nearby public garages.

- Dartmouth Street Garage, 126 Dartmouth Street, Boston, MA 02116
- Pilgrim Parking, 131 Dartmouth Street, Boston, MA 02116 (0.4 mi, 9 min)

TAX

A 7% State of Massachusetts & City of Boston Meals & Beverage Tax will be added to the total event bill.

DEPOSIT & PAYMENT SCHEDULE

The deposit is required to reserve any of our available private spaces. 25% of the F&B Minimum will be charged at the time of reservation. A second 50% deposit of your estimated total event bill is required 14 days prior to the event. A third 85% deposit of your total event bill is due two days prior to the event. Final payment for the full 100% total event bill is required the day of the event. Personal and business checks are welcome.

CANCELLATIONS

Buyouts and large groups are subject to the following cancellation charges:

- 61-90 days prior: 25% of Estimated Total Event Cost
- 31-60 days prior: 50% of Estimated Total Event Cost
- 15-30 days prior: 70% of Estimated Total Event Cost
- 8-14 days prior: 85% of Estimated Total Event Cost
- 3-7 days prior: 95% of Estimated Total Event Cost
- 0-2 days prior: 100% of Estimated Total Event Cost

FRONTDESK@BEEHIVEBOSTON.COM
HELLO@COSMICBOSTON.COM