

News Release

RSMC Tokyo for Nowcasting began operation

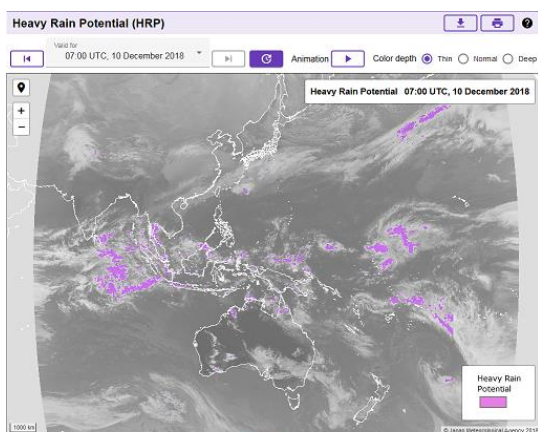
20 December 2018

Japan Meteorological Agency (JMA)

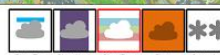
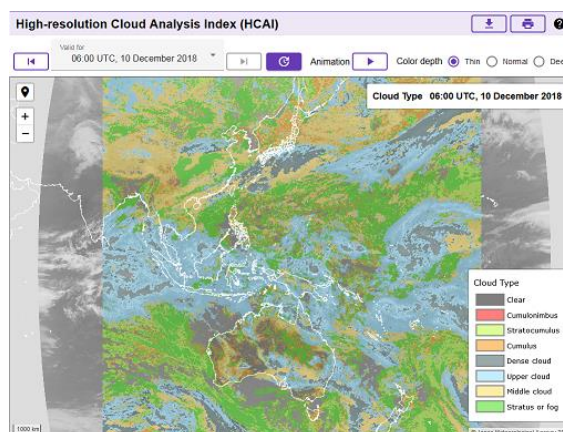
RSMC Tokyo for Nowcasting, which was designated at the sixty-ninth session of the Executive Council of the World Meteorological Organization (WMO), began its operation establishing the following website on 20 December 2018 to supply National Meteorological and Hydrological Services (NMHSs) in the Asia and Pacific regions with graphical nowcasting products for improving capacity for disaster risk reduction. The website initially provides two Himawari-8/9 satellite products titled Heavy Rainfall Potential (HRP) and High-resolution Cloud Analysis Information (HCAI), respectively.

<https://www.jma.go.jp/jma/jma-eng/jma-center/nowcasting/>

The Japan Meteorological Agency (JMA) partners with NMHSs to optimize two-way communication, thus supporting their use of nowcasting products in a timely manner. JMA also collaborates closely with NMHSs and related organizations to develop higher-level nowcasting products.



Heavy Rainfall Potential (HRP)



High-resolution Cloud Analysis Information (HCAI)