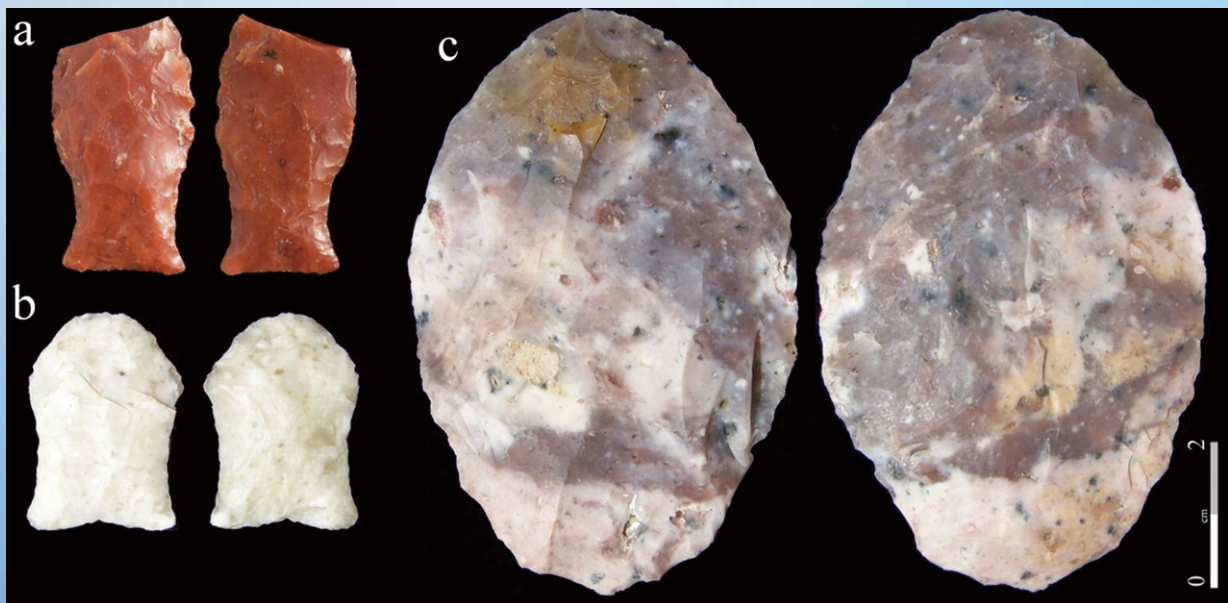


Archaeological Discovery



Journal Editorial Board

ISSN Print: 2331-1959 ISSN Online: 2331-1967

<http://www.scirp.org/journal/ad/>

Editorial Board

Dr. Kumar Akhilesh	Sharma Centre for Heritage Education, India
Dr. Ksenija Borojevic	University of Massachusetts, USA
Dr. Parth R. Chauhan	Indiana University, USA
Prof. Lev V. Eppelbaum	Tel Aviv University, Israel
Dr. Francisco Estrada-Belli	Boston University, USA
Dr. Xiuzhen Li	Emperor Qin Shihuang's Mausoleum Site Museum, UK
Dr. Hugo Gabriel Nami	National Council of Scientific and Technical Research, Argentina
Dr. Agazi Negash	Addis Ababa University, Ethiopia
Prof. Nancy J. Parezo	National Museum of Natural History, USA
Prof. Leonard V. Rutgers	Utrecht University, The Netherlands

Table of Contents

Volume 2 Number 3

July 2014

Archaeo-Geophysical Survey around Itay El-Baroud Area, Nile Delta, Egypt

H. Shaaban, G. El-Qady, E.-S. Al-Sayed, A. Khozaym, A. Al-Emam, H. Ghazala.....45

Laser Ablation Cleaning Effects on Thermoluminescence Dating Technique

D. Renzelli, S. Veltri, F. Stranges, P. Barone, M. Barberio, F. Xu, A. Bonanno.....58

Fishtail Points, Technology and Microwear Analysis from the Negro River Basin, Uruguay

H. G. Nami, A. Castro.....65

Appliance of Geophysical Methods to Detect the Ancient Remains at “Tell Defenneh” Area, Ismailia, Egypt

A. A. Basheer, A. El-Kotb Al-Imam, A. M. Abdelmotaal, M. S. Toni, S. O. Elkhateeb.....71

Navigation in Space-Time as the Basis for Information Modeling

A. Paranina.....83

Archaeological Discovery (AD)

Journal Information

SUBSCRIPTIONS

The *Archaeological Discovery* (Online at Scientific Research Publishing, www.SciRP.org) is published quarterly by Scientific Research Publishing, Inc., USA.

Subscription rates:

Print: \$39 per issue.

To subscribe, please contact Journals Subscriptions Department, E-mail: sub@scirp.org

SERVICES

Advertisements

Advertisement Sales Department, E-mail: service@scirp.org

Reprints (minimum quantity 100 copies)

Reprints Co-ordinator, Scientific Research Publishing, Inc., USA.

E-mail: sub@scirp.org

COPYRIGHT

COPYRIGHT AND REUSE RIGHTS FOR THE FRONT MATTER OF THE JOURNAL:

Copyright © 2014 by Scientific Research Publishing Inc.

This work is licensed under the Creative Commons Attribution International License (CC BY).

<http://creativecommons.org/licenses/by/4.0/>

COPYRIGHT FOR INDIVIDUAL PAPERS OF THE JOURNAL:

Copyright © 2014 by author(s) and Scientific Research Publishing Inc.

REUSE RIGHTS FOR INDIVIDUAL PAPERS:

Note: At SCIRP authors can choose between CC BY and CC BY-NC. Please consult each paper for its reuse rights.

DISCLAIMER OF LIABILITY

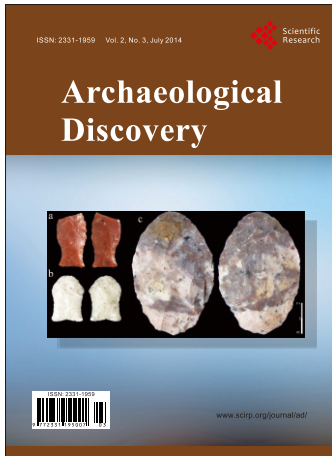
Statements and opinions expressed in the articles and communications are those of the individual contributors and not the statements and opinion of Scientific Research Publishing, Inc. We assume no responsibility or liability for any damage or injury to persons or property arising out of the use of any materials, instructions, methods or ideas contained herein. We expressly disclaim any implied warranties of merchantability or fitness for a particular purpose. If expert assistance is required, the services of a competent professional person should be sought.

PRODUCTION INFORMATION

For manuscripts that have been accepted for publication, please contact:

E-mail: ad@scirp.org

Call for Papers



Archaeological Discovery

ISSN Print: 2331-1959 ISSN Online: 2331-1967
<http://www.scirp.org/journal/ad/>

Archaeological Discovery (AD) is an international journal dedicated to the latest advancement in the study of Archaeology. The goal of this journal is to provide a platform for scientists and academicians all over the world to promote, share, and discuss various new issues and developments in different areas of Archaeological studies.

Subject Coverage

All manuscripts must be prepared in English, and are subject to a rigorous and fair peer-review process. Accepted papers will immediately appear online followed by printed hard copy. The journal publishes original papers covering a wide range of fields but not limited to the following:

- Aerial Archaeology
- Archaeological Method and Theory
- Archaeological Science
- Archaeometry
- Art Archaeology
- Experimental Archaeology
- Field Archaeology
- Historical Archaeology
- Island and Coastal Archaeology
- Lithic Studies
- Maritime Archaeology
- Prehistoric Archaeology
- Religious Archaeology
- Social Archaeology
- Underwater Archaeology
- World Archaeology
- Zooarchaeology

We are also interested in: 1) Short reports — 2-5 page papers in which an author can either present an idea with a theoretical background but has not yet completed the research needed for a complete paper, or preliminary data; 2) Book reviews — Comments and critiques, special peer-reviewed issue for colloquia, symposia, workshops.

Website and E-Mail

<http://www.scirp.org/journal/ad/> E-mail: ad@scirp.org