

# Using Biophysical Variables and Stand Density to Estimate Growth and Yield of *Pinus patula* in Antioquia, Colombia

Héctor I. Restrepo<sup>1\*</sup>, Sergio A. Orrego<sup>2</sup>, Juan C. Salazar-Uribe<sup>2</sup>, Bronson P. Bullock<sup>1</sup>, Cristian R. Montes<sup>1</sup>

<sup>1</sup>Plantation Management Research Cooperative, Warnell School of Forestry and Natural Resources, University of Georgia, Athens, GA, USA

<sup>2</sup>Universidad Nacional de Colombia, Medellín, Colombia  
Email: \*hrestrepo@uga.edu

**How to cite this paper:** Restrepo, H. I., Orrego, S. A., Salazar-Uribe, J. C., Bullock, B. P., & Montes, C. R. (2019). Using Biophysical Variables and Stand Density to Estimate Growth and Yield of *Pinus patula* in Antioquia, Colombia. *Open Journal of Forestry*, 9, 195-213.  
<https://doi.org/10.4236/ojf.2019.93010>

**Received:** May 6, 2019

**Accepted:** June 21, 2019

**Published:** June 24, 2019

Copyright © 2019 by author(s) and Scientific Research Publishing Inc. This work is licensed under the Creative Commons Attribution International License (CC BY 4.0).  
<http://creativecommons.org/licenses/by/4.0/>



Open Access

---

## Abstract

Timberland investment opportunities in Colombia are expected to increase as a result of the peace agreement recently signed between the Colombian government and the Revolutionary Armed Forces of Colombia. This new socio-political environment may facilitate the expansion of commercial forest plantations on a wider range of site conditions that are currently considered in existing biometric tools. Data from 1119 temporary plots of unthinned, unmanaged, and genetically unimproved *Pinus patula* plantations in the Antioquia region were combined with a large set of biophysical attributes to identify spatial variation in yield. A wide array of biophysical covariates was explored to characterize the most favorable environmental conditions for the species, and to identify potential explanatory variables to be included in forest yield models. The mathematical form of the model is the von Bertalanffy-Chapman-Richards type, with parameters: asymptote, intrinsic growth rate and allometric constant. The parameters were expressed as linear functions of soil *pH*, terrain slope, the mean annual temperature to mean annual precipitation ratio, and stand density. The statistical contribution of selected covariates was evaluated using the likelihood ratio test. The model was validated using an independent set of 133 observations. The spatial representation of the model depicts the timber production potential and allows for the identification of the most suitable geographical areas to establish *Pinus patula* plantations in Antioquia, Colombia. The estimated yield model provides a reliable baseline for timber production, and insight into timberland investments in Colombia.

## Keywords

Von Bertalanffy, Chapman-Richards, Fixed-Effect Models, Forest

---

## 1. Introduction

The end of the 50-year internal armed conflict in Colombia, resulting from the peace agreement signed between the Colombian Government and the Revolutionary Armed Forces of Colombia, is expected to lead to a substantial social-economic transformation. Increased private and public investments are expected to boost the domestic economy. Timberland investments have received considerable attention due to land availability, relatively high rates of forest growth, and the strategic geographical location of Colombia (Cubbage et al., 2010; Cubbage et al., 2007; López et al., 2010; Mendell et al., 2006). Antioquia is the Colombian state with the largest area in forest plantations with 69000 ha, and a region characterized by a high timber production potential, an increasing demand for timber, and a high economic development. These potential timberland investments require appropriate growth and yield modeling, which provides valuable inputs for performing financial analysis and risk assessment (Hall & Bailey, 2001; Louw, 1999; Moser & Hall, 1969).

Forest growth is a function of four factors (Clutter et al., 1992): 1) the stand age, 2) the site quality or environmental effect (Bravo-Oviedo et al., 2007; Louw & Scholes, 2006); 3) the intrinsic characteristics of a forest stand, such as density and tree genetics (Calegario et al., 2005); and 4) management practices such as mechanical site preparation, fertilization, and competing vegetation control (Allen et al., 2005). The effect of age on forest growth is accounted for by the inclusion of the stand age in the growth and yield models. Moreover, one of the intrinsic characteristics, density, is accounted for by the planting density, survival/mortality model or stand density.

Much research has been devoted to site quality since it represents a measure of the base timber production potential of a stand. The determination of the site quality is particularly important in Colombia, where intensive forest management practices such as mid-rotation cultural treatments, sustained fertilization and vegetation control, and planting genetically improved seedlings have not been extensively applied. Site quality can be analyzed by either direct or indirect methods.

The direct method to determine forest productivity requires measuring plots in stands representing distinct ages and site qualities, and estimating a site index equation based on dominant heights (Burkhart et al., 2018; Clutter et al., 1992; Walters et al., 1989). Nevertheless, this approach has some shortcomings: the existence of forest plantations is required to assess site productivity; estimations are locally restricted, and the actual effect of the environment on forest production and productivity is not analyzed. Moreover, the assumption of independence between planting density and dominant height cannot be satisfied (Antón-Fernández et al., 2011; Henskens et al., 2001; Land et al., 2004), thereby

providing biased estimations of forest productivity. Virtually all existing forest growth and yield (FG&Y) models for *P. patula* in Colombia utilize the site index as their primary input, precluding yield estimations on a regional scale.

On the other hand, the indirect method or geocentric approach (Weiskittel et al., 2011) of forest productivity is intended to estimate growth and yield models as a function of the site quality factors: climate, soil, and topographic conditions (Bravo-Oviedo et al., 2007; Clutter et al., 1992; Günter et al., 2009; Louw & Scholes, 2002, 2006; Lugo et al., 1988; Palahi et al., 2004; Vanclay, 1992; Walters et al., 1989; Wang et al., 2005; Zapata-Cuartas, 2007).

Models based on an explicit biological explanation of FG&Y are more appropriate than empirical models (Vanclay, 1994). The von Bertalanffy-Chapman-Richards (vBCR) model has a well-grounded biological basis with its mathematical terms implicitly expressing the underlying physiological processes occurring in an organism. The vBCR model has been extensively examined worldwide for many species (Buford & Burkhart, 1987; Fekedulegn et al., 1999; Moser & Hall, 1969; Pienaar & Turnbull, 1973; Pienaar, 1979; Zeide, 1993), as well as in Colombia for *Acacia mangium* (Torres & del Valle, 2007), *Eucalyptus sp.* (Zapata-Cuartas, 2007), *Pinus patula* (Restrepo et al., 2012), and *Tectona grandis* (Restrepo & Orrego, 2015; Restrepo et al., 2012; Torres et al., 2012). Likewise, the vBCR parameters have been expressed as a function of covariates (Bravo-Oviedo et al., 2007; Hall & Bailey, 2001; Louw & Scholes, 2006).

*P. patula* was chosen to characterize the timberland investment potential because this species is the most widely planted in Colombia (Endo, 1994), as well as in Antioquia where the planted area is 20000 ha (DANE, 2004). The natural range of *P. patula* is the south-central region of Mexico (Webb et al., 1984). However, *P. patula* has been planted worldwide in a wider climatic range than its natural habitat (van Zonneveld et al., 2009). Biophysical covariates associated with the three forest growth factors have been utilized to explain *P. patula* FG&Y variation (Evans, 1974; Grey, 1979; Louw & Scholes, 2006).

This research had three main objectives. First, to explore a large set of covariates, and to select a subset that potentially explain *P. patula* growth and yield variation in Antioquia, Colombia. Second, to estimate and validate a *P. patula* FG&Y model as a function of stand age, stand density, and selected biophysical variables using the vBCR model. Our hypothesis is that the stand age and density, along with biophysical covariates representing site quality factors will explain *P. patula* growth and yield in Antioquia, Colombia. Third, to spatially represent *P. patula* FG&Y in Antioquia, Colombia. The resulting map will be useful to provide insight into potential areas for timberland investment in the region.

## 2. Methods

### 2.1. Data

The database of forest measurements comprises 1119 1/40 ha-circular-geo-re-

ferenced temporary plots measured in unthinned, unmanaged, and genetically unimproved *P. patula* plantations in eight locations in Antioquia, Colombia (Table 1). Data correspond to forest inventories conducted by the Department of Forest Sciences at National University of Colombia, Medellín, in forest plantations of *Empresas Públicas de Medellín*, and by students conducting a Forest Engineering thesis in forest plantations of *Cipreses de Colombia* (Lopera & Gutiérrez, 2000). Raster maps for climatic variables and a digital elevation model were obtained from *WorldClim*, version 1.4 (Hijmans et al., 2005), and the Shuttle Radar Topography Mission (Farr et al., 2007), respectively. Soil data, including the *pH* level, were obtained in vector format from national public databases in Colombia (IGAC, 2007) (Table 1). Additional covariates were calculated with the collected dataset. The slope of the terrain (*S*, degrees) was calculated from the digital elevation model using the d-eight algorithm as implemented in the R function *terrain* (Hijmans et al., 2016) using a 30 m grid size DEM. The temperature to precipitation ratio (*TP*, 100°C·mm<sup>-1</sup>) was calculated as:

$$TP = 100 \times \left( \frac{Amt}{Amp} \right), \quad (1)$$

where *Amt* is the annual mean temperature (°C), and *Amp* is the annual mean precipitation (mm), and the value of 100 is a scale factor.

## 2.2. Model Description

The integrated form of the vBCR model can be written as:

$$y = \phi \left[ 1 - \exp(-\beta(A)) \right]^{1/\gamma}, \quad (2)$$

where *y* is the yield volume (m<sup>3</sup>·ha<sup>-1</sup>), *φ* is the asymptote (m<sup>3</sup>·ha<sup>-1</sup>), *A* is the stand age (years), *β* is the intrinsic growth rate, and *γ* is the allometric constant. The parameters *φ* and *β* represent the potential environmental effects on growth and yield since they are related to metabolic outcomes of resource availability (Brown & Lugo, 1982; González, 1994; Lugo et al., 1988; Pienaar, 1979). The parameter *γ* represents, theoretically, a characteristic growth attribute for a species (González, 1994; Pienaar & Turnbull, 1973) and, therefore, it is not related to environmental variables. The parameter *γ*, generally found in the range [0,2], adds flexibility to the vBCR model (Richards, 1959). Thus, a value of *γ* greater than 1 corresponds to a logistic shape for the yield curve; when *γ* is less than 1, it corresponds to the *Mitscherlich* curve; when *γ* is equal to 1, the model takes the name of *Gompertz* function (Pienaar & Turnbull, 1973; Zapata-Cuartas, 2007). Additionally, the *γ* parameter is related to the curve's inflection point and to the age at which the maximum current annual increment is attained, thereby influencing both the biological and economical rotation ages.

## 2.3. Model Estimation and Validation

Equation (2) was estimated using generalized nonlinear least-squares with the R function *gnls* with the variance function argument as *varPower* (Pinheiro et al., 2017). Different parameter linear specifications as a function of age, stand

**Table 1.** Summary statistics of the 1119 temporary plots of *P. patula* and environmental covariates in Antioquia, Colombia.

Variable or covariate	Acronym	Units	Min	Max	Mean	SD
<u>Stand variables</u>						
Age	<i>A</i>	yr	2.4	54.8	20.7	7.7
Yield	<i>Y</i>	(m <sup>3</sup> ·ha <sup>-1</sup> )	0.2	842.5	305.1	155.2
Density	<i>N</i>	trees·ha <sup>-1</sup>	320	2040	912	379
<u>Climate covariates</u>						
Annual mean temperature	<i>Amt</i>	°C	13.9	20.4	17.5	1.0
Annual mean precipitation	<i>Amp</i>	mm·yr <sup>-1</sup>	1631	4176	2508	681.2
Temperature to precipitation ratio	<i>TP</i>	100 °C·mm <sup>-1</sup>	0.44	1.09	0.74	0.18
Hottest month's temperature	<i>Hmt</i>	°C	18.7	26.0	23.1	1.0
Coolest month's temperature	<i>Cmt</i>	°C	9.0	14.0	11.5	1.1
Hottest quarter's temperature	<i>Hqt</i>	°C	15.3	21.3	18.0	1.1
Coolest quarter's temperature	<i>Cqt</i>	°C	13.5	19.7	16.9	1.1
Moister month's precipitation	<i>Mmp</i>	mm·mo <sup>-1</sup>	222	453	312.9	73.1
Driest month's precipitation	<i>Dmp</i>	mm·mo <sup>-1</sup>	45	169	72.4	31.8
Moister quarter's precipitation	<i>Mqp</i>	mm·Qrt <sup>-1</sup>	568	1328	858.1	225.7
Driest quarter's precipitation	<i>Dqp</i>	mm·Qtr <sup>-1</sup>	186	538	271.2	89.7
<u>Topographic covariates</u>						
Slope	<i>S</i>	Degree	0	54.9	14.7	6.6
Elevation	<i>E</i>	m.a.s.l.	1693	2693	2216	210
<u>Soil covariates</u>						
			Level 1		Level 2	
<i>pH</i> (4.1 - 5; 5.1 - 6)	<i>pH</i>	Count	462		657	
Drainage (W: well; E: excessive)	<i>D</i>	Count	1034		85	
Depth (M: moderate; D: deep)	<i>Dp</i>	Count	182		937	
Fertility (V: very low; L: low)	<i>F</i>	Count	64		1055	

density and biophysical covariates were evaluated. The first estimated model expressed the volume as a function of the parameters  $\phi$ ,  $\beta$ ,  $\gamma$ , and age. Out of this formulation, nested models were specified by expressing each parameter as a function of an intercept, the stand density, and one or more biophysical covariates. The same biophysical covariate was not considered in more than one parameter to avoid potential multicollinearity.

The statistical contribution of one additional covariate in the nested models was evaluated using the likelihood ratio (*LR*) test (Wackerly et al., 2008):

$$LR = \frac{\max_{\{\theta, \sigma^2 \in \omega\}} L(\theta, \sigma^2 | \mathbf{y})}{\max_{\{\theta, \sigma^2 \in \Omega\}} L(\theta, \sigma^2 | \mathbf{y})}, \quad (3)$$

where  $\theta$  represents the vector of parameters, i.e.  $\phi$ ,  $\beta$ ,  $\gamma$ ; and  $\omega$  and  $\Omega$  represent

the parameter space of the models with  $p - 1$  and  $p$  parameters, respectively. The estimated model containing  $p$  parameters was compared to the previous model containing  $p - 1$  parameters. For a large number of observations,  $-2 \log(LR)$  has approximately a  $\chi^2_{(1)}$  distribution. The rejection region is defined as  $RR: \{-2 \log(LR) > -2(\log k) = k^*\}$ , with  $k^* = 3.842$  for a level of significance  $\alpha = 0.05$ .

The validation was performed using an independent 133-observation dataset of forest plantations (ICA, 2015) with similar biophysical attributes and stand characteristics of the measured plots. Specifically, the hypothesis tested was:

$$H_0: \mu_o - \mu_f = 0 \quad \text{vs.} \quad H_a: \mu_o - \mu_f \neq 0,$$

where  $\mu_o$  is the mean of observed volume and  $\mu_f$  is the mean of fitted values, estimated by their corresponding sample means  $\bar{Y}_o$ , and  $\bar{Y}_f$ , respectively. The test statistics is:

$$t^* = \frac{(\bar{Y}_o - \bar{Y}_f) - 0}{\sqrt{\frac{S_o^2 + S_f^2}{2}}}, \quad (4)$$

where  $S_o^2$  and  $S_f^2$  are the sample variances of the observed volumes and fitted values, respectively. Hence, the null hypothesis of equal means is rejected if  $|t^*| > t_{(1-\alpha/2, 2n-2)}$ , with  $t_{(0.975, 264)} = 1.969$  for a level of significance  $\alpha = 0.05$ .

## 2.4. Forest Growth, Yield Curves and Yield Map

Parameters  $\phi$  and  $\beta$  were estimated for each of the 1119 plots based on the covariate values associated with each location. The mean and the 95% prediction interval (2.5% and 97.5% percentiles of the distribution) for these two parameters were estimated to depict the mean and the 95% prediction interval of the growth and yield. The parameter  $\gamma$  was fixed in all these calculations because it does not vary across the study area or as a function of the stand density. Similarly, parameters  $\phi$  and  $\beta$  were represented as a function of the mean of covariates and were used to generate a map of forest yield at year 20. Natural protected areas, which include lands above 2800 meters above sea level (m.a.s.l.), were not considered in the analyses and maps (Gómez-Ossa, 2011), given the environmental restrictions by which forest plantations are not allowed as land use on protected areas.

## 3. Results

### 3.1. Biophysical Covariates Description and Variable Selection

The measured plots in Antioquia represent climatic conditions of  $Amt$ ,  $Amp$ , and  $TP$  at (mean  $\pm$  SD)  $17.5^\circ\text{C} \pm 1.0^\circ\text{C}$ ,  $2508 \pm 681.2$  mm,  $0.74 \pm 0.18$   $100^\circ\text{C}\cdot\text{mm}^{-1}$ , respectively. Soil and topography were characterized by the mean terrain slope at  $14.7 \pm 6.6$  degrees, and soil  $pH$  mainly between 5.1 and 6. Most biophysical covariates exhibited a bell-shape relationship with parameters  $\phi$  and  $\beta$ , providing empirical evidence of optimal environmental conditions for  $P$ .

*patula* in Antioquia. For instance, parameters  $\phi$  and  $\beta$  exhibited their maximum values for *Amt* and *Amp* at 17.5°C and 2200 - 2500 mm·yr<sup>-1</sup>, respectively (**Figure 1** and **Figure 2**). Similar bell-shape curves, showing the maximum values for  $\phi$  and  $\beta$ , were exhibited for other biophysical covariates, e.g. moister quarter's precipitation (*Mqp*), coolest month's temperature (*Cmt*), and moister month's precipitation (*Mmp*) (**Figure 1** and **Figure 2**).

Points in **Figure 1** and **Figure 2** are assumed to represent the average contribution of a covariate to the parameters  $\phi$  and  $\beta$  within one of the eight locations. Similarly, the lines show the general trend (a loess smoother) of the relationship of the covariable and parameters  $\phi$  and  $\beta$  (§8.2.2 Using covariates with *nlme* in Pinheiro & Bates, (2000)). Thus, a line with a noteworthy trend and relative high gradient (how steep the line is) makes the covariate a good candidate to be selected as potential explanatory variable. Both the soil *pH* (difference between *pH* levels) and terrain's slope (steeper than 15°) contribute with more than 100 m<sup>3</sup>·ha<sup>-1</sup> to the asymptote ( $\phi$ ) (**Figure 1**). *TP* has a noticeable trend with high gradient, suggesting that the higher the *TP* the higher the intrinsic growth rate ( $\beta$ ) (**Figure 2**).

Overall, *pH*, *S*, and *TP* capture the effect of both  $\phi$  and  $\beta$ , and for that reason they were chosen over the remaining covariates. These variables were plotted in the first row of **Figure 1** and **Figure 2**, along with stand density (*N*), to help the reader to identify described relationships with the parameters. Moreover, the selected biophysical covariates can be easily determined by practitioners and researchers from field measurements or publicly available data without much need of additional external inputs or further complex calculations.

### 3.2. Yield Model

In the best estimated model, the parameter  $\phi$  was a function of an intercept, *pH*, *S*, and *N*; the parameter  $\beta$  was a function of an intercept, and *TP*; and the parameter  $\gamma$  was a function of just an intercept (**Table 2**, model 20). This model had the maximum value of the log likelihood (**Table 2**), and its parameter estimates were highly statistical significant (*p*-value < 0.001) (**Table 3**). The parameter estimates can be written as (**Table 3**):

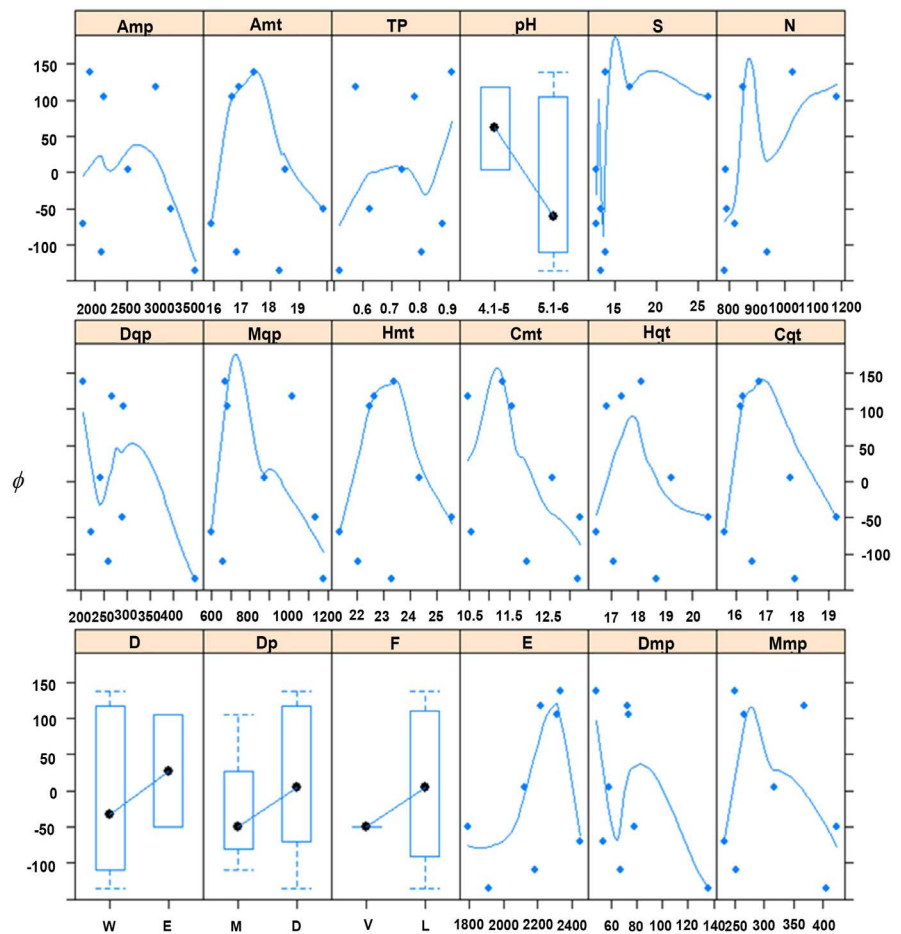
$$\hat{\phi} = 235.994 - 112.423 \left( I_{\{pH=5.1-6\}} \right) + 2.193(S) + 0.176(N), \quad (5)$$

$$\hat{\beta} = -0.123 + 0.545(TP), \quad (6)$$

$$\hat{\gamma} = 0.921, \quad (7)$$

where  $I_{\{pH=5.1-6\}}$  represents an indicator function that takes the value of one if the soil *pH* is in the range 5.1 - 6, or zero otherwise (in this case the remaining option is soil *pH* between 4.1 and 5).

The asymptote  $\phi$  is expressed as a function of an intercept, equal to 236 m<sup>3</sup>·ha<sup>-1</sup>, and the effect of two covariates, *pH* and *S*. On sites where *pH* was in the range 5.1 - 6, the asymptote was lower in 112.4 m<sup>3</sup>·ha<sup>-1</sup> compared to sites where *pH* was in the range 4.1 - 5. Moreover, each additional degree of slope added 2.2

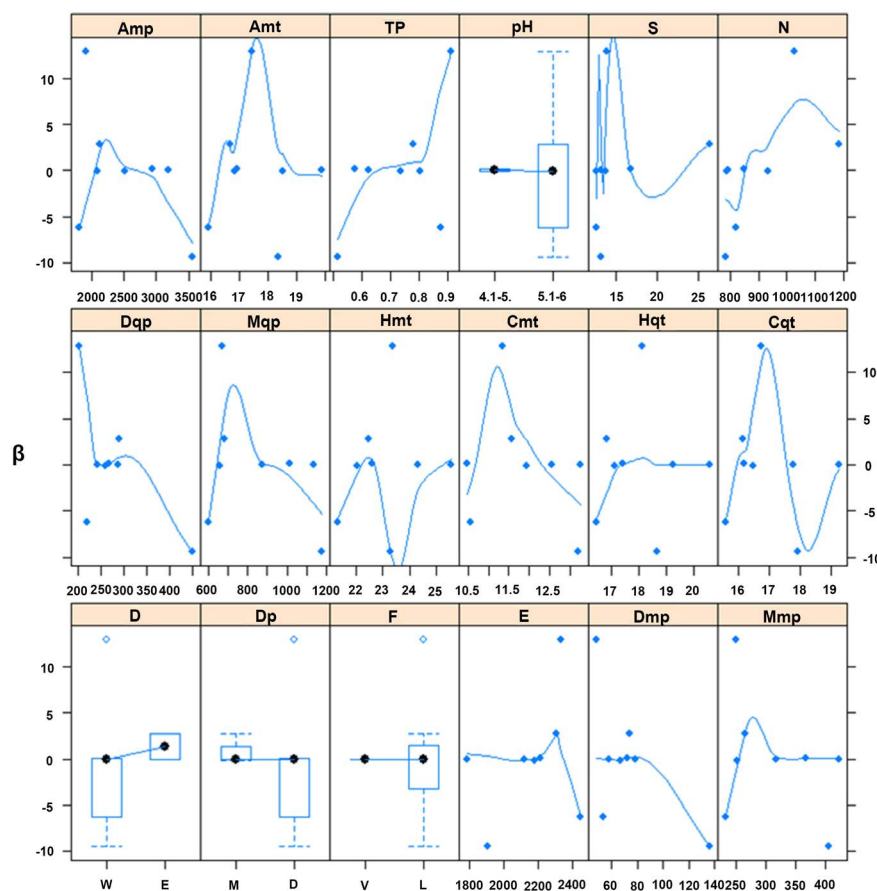


**Figure 1.** Relationship between the parameter  $\phi$  with environmental covariates and stand density: *Amp*, annual mean precipitation ( $\text{mm}\cdot\text{yr}^{-1}$ ); *Amt*, annual mean temperature ( $^{\circ}\text{C}$ ); *TP*, temperature to precipitation ratio ( $100^{\circ}\text{C}\cdot\text{mm}^{-1}$ ); *pH*, soil *pH* class; *S*, slope of the terrain (degrees); *N*, stand density (trees per ha); *Dqp*, driest quarter’s precipitation ( $\text{mm}\cdot\text{Qtr}^{-1}$ ); *Mqp*, moister quarter’s precipitation ( $\text{mm}\cdot\text{Qtr}^{-1}$ ); *Hmt*, hottest month’s temperature ( $^{\circ}\text{C}$ ); *Cmt*, coolest month’s temperature ( $^{\circ}\text{C}$ ); *Hqt*, hottest quarter’s temperature ( $^{\circ}\text{C}$ ); *Cqt*, coolest quarter’s temperature ( $^{\circ}\text{C}$ ); *D*, soil drainage class (*W*: well; *E*: excessive); *Dp*, soil depth class (*M*: moderate,  $<80$  cm, *D*: deep,  $>80$  cm); *F*, soil fertility class (*V*: very low; *L*: low); *E*, elevation (meters above sea level, m.a.s.l.); *Dmp*, driest month’s precipitation ( $\text{mm}\cdot\text{mo}^{-1}$ ); and *Mmp*, moister month’s precipitation ( $\text{mm}\cdot\text{mo}^{-1}$ ).

$\text{m}^3\cdot\text{ha}^{-1}$  to the asymptote. Regarding density, for each 100 standing TPH, the asymptote increases in  $18 \text{ m}^3\cdot\text{ha}^{-1}$ . The parameter  $\beta$  was expressed as a function of an intercept, equal to  $-0.123$ , and *TP*. As described, the higher the *TP*, the higher the value of  $\hat{\beta}$ . Evidence was not found to reject the null hypothesis that the mean of observed and estimated volumes of the validation dataset were different ( $p$ -value  $> 0.05$ ).

The average growth and yield curves of *P. patula* by soil *pH* are shown in b. **Figure 3(a)** depicts the average yield with parameter estimates of  $\hat{\phi} = 432.578$  and  $\hat{\beta} = 0.266$ ; and  $\hat{\phi} = 312.624$  and  $\hat{\beta} = 0.292$  for locations where soil *pH* is in the range 4.1 - 5 and 5.1 - 6, respectively. The parameter estimate  $\hat{\gamma}$  was constant for both soil *pH* factor levels. The estimated yield curves are flat over





**Figure 2.** Relationship between the parameter  $\beta$  with environmental covariates and stand density: *Amp*, annual mean precipitation ( $\text{mm}\cdot\text{yr}^{-1}$ ); *Amt*, annual mean temperature ( $^{\circ}\text{C}$ ); *TP*, temperature to precipitation ratio ( $100^{\circ}\text{C}\cdot\text{mm}^{-1}$ ); *pH*, soil *pH* class; *S*, slope of the terrain (degrees); *N*, stand density (trees per ha); *Dqp*, driest quarter's precipitation ( $\text{mm}\cdot\text{Qtr}^{-1}$ ); *Mqp*, moister quarter's precipitation ( $\text{mm}\cdot\text{Qtr}^{-1}$ ); *Hmt*, hottest month's temperature ( $^{\circ}\text{C}$ ); *Cmt*, coolest month's temperature ( $^{\circ}\text{C}$ ); *Hqt*, hottest quarter's temperature ( $^{\circ}\text{C}$ ); *Cqt*, coolest quarter's temperature ( $^{\circ}\text{C}$ ); *D*, soil drainage class (*W*: well; *E*: excessive); *Dp*, soil depth class (*M*: moderate,  $<80$  cm, *D*: deep,  $>80$  cm); *F*, soil fertility class (*V*: very low; *L*: low); *E*, elevation (meters above sea level, m.a.s.l.); *Dmp*, driest month's precipitation ( $\text{mm}\cdot\text{mo}^{-1}$ ); and *Mmp*, moister month's precipitation ( $\text{mm}\cdot\text{mo}^{-1}$ ). Values of the vertical axis in 100.000 units.

the first four years, increasing steadily until year 25. The average mean annual increment (*MAI*) reaches a maximum of 22.7 and 18.0  $\text{m}^3\cdot\text{ha}^{-1}\cdot\text{year}^{-1}$  at years 15 and 13 for *pH* 4.1 - 5 and 5.1 - 6, respectively (**Figure 3(b)**). The shading region in each panel of **Figure 3** represents the 95% prediction interval (PI) by the two *pH* factor levels, describing the growth and yield variability associated with the environmental covariates considered. For example, the *MAI*'s 95% PI was (11.21, 43.27), and (5.28, 38.84)  $\text{m}^3\cdot\text{ha}^{-1}\cdot\text{year}^{-1}$  for soil *pH* 4.1 - 5, and 5.1 - 6, respectively. Overall, the 95% PI of biological rotation age was in the range of 9 - 30 years (**Figure 3(b)**).

The spatial representation of the parameters  $\phi$  and  $\beta$ , and the yield is presented in **Figure 4**. The map of the parameter  $\phi$  indicates that the most productive areas

**Table 2.** Estimated yield models of *P. patula* in Antioquia, Colombia.

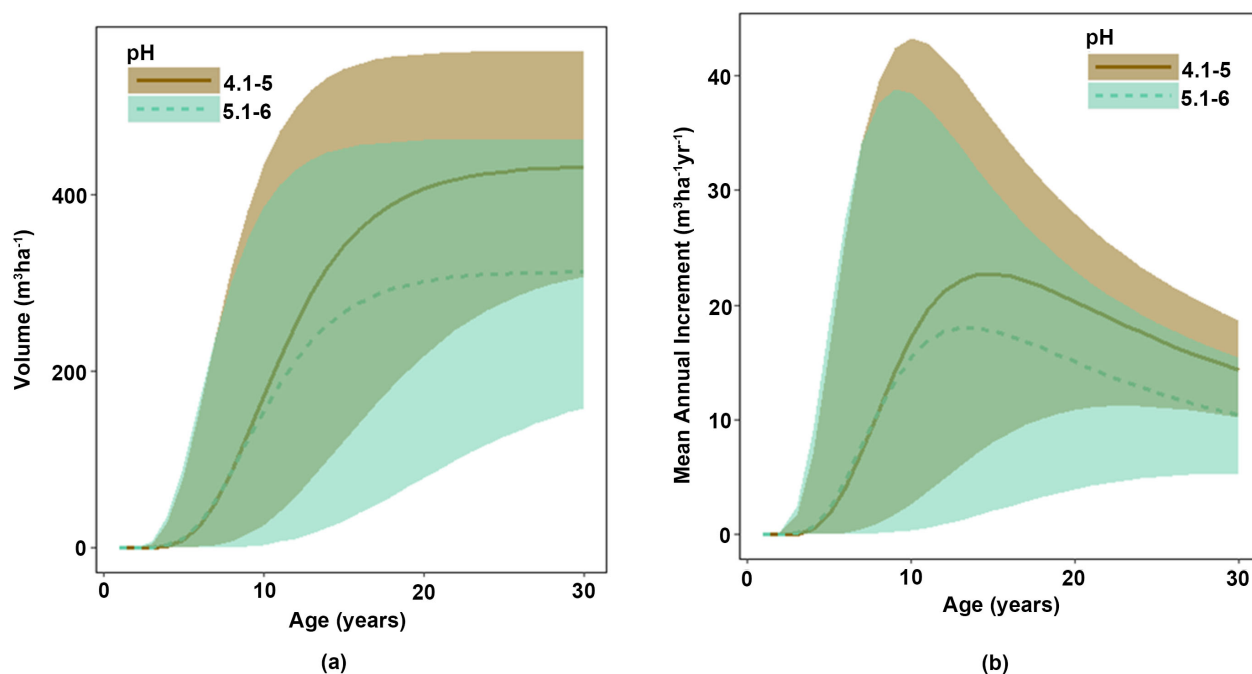
Model	Parameter as a function of covariates			Number of parameters	Comparison to model	Log Likelihood	-2 (logLR)	p-value
	$\phi$	$\beta$	$\gamma$					
1	int	int	int	5		-7087.924		
2	int + <i>pH</i>	int	int	6	1	-7051.742	72.364	<0.0001
3	int	int + <i>pH</i>	int	6	1	-7088.574	0	0.9999
4	int	int	int + <i>pH</i>	6	1	-7087.469	0.91	0.340
5	int + <i>S</i>	int	int	6	1	-7083.645	8.558	0.003
6	int	int + <i>S</i>	int	6	1	-7088.068	0	0.9999
7	int	int	int + <i>S</i>	6	1	-7087.771	0.306	0.580
8	int + <i>TP</i>	int	int	6	1	-7100.969	0	0.9999
9	int	int + <i>TP</i>	int	6	1	-7041.934	91.98	<0.0001
10	int	int	int + <i>TP</i>	6	1	-7084.677	6.494	0.011
11	int + <i>N</i>	int	int	6	1	-7020.683	134.482	<0.0001
12	int	int + <i>N</i>	int	6	1	-7112.818	0	0.9999
13	int	int	int + <i>N</i>	6	1	-7113.944	0	0.9999
14	int + <i>pH</i> + <i>S</i>	int	int	7	2	-7039.702	24.08	<0.0001
15	int + <i>pH</i> + <i>N</i>	int	int	7	2	-6958.700	186.084	<0.0001
16	int + <i>S</i> + <i>N</i>	int	int	7	2	-7014.577	74.33	<0.0001
17	int + <i>pH</i> + <i>N</i> + <i>S</i>	int	int	8	15	-6952.366	12.668	<0.001
18	int + <i>pH</i> + <i>N</i>	int + <i>TP</i>	int	8	15	-6881.009	155.382	<0.0001
19	int + <i>pH</i> + <i>S</i>	int + <i>TP</i>	int	8	15	-6967.294	0	0.9999
20	int + <i>pH</i> + <i>N</i> + <i>S</i>	int + <i>TP</i>	int	9	18	-6875.410	11.198	<0.001

int: intercept; *LR*: likelihood ratio; soil *pH* (*pH*, dummy variable with value of one for *pH* in the range 5.1 - 6, and value of zero for *pH* in the range 4.1 - 5), slope (*S*, degrees), temperature to precipitation ratio (*TP*, 100°C·mm<sup>-1</sup>), and stand density (*N*, trees per hectare (TPH)).

**Table 3.** Parameter estimates for the yield model of *P. patula*.

Parameter	Value	Standard error	Degrees of freedom	t-value	p-value
$\phi$ (int)	235.994	16.013	1112	14.738	<0.0001
$\phi$ ( <i>pH</i> )	-112.423	9.726	1112	-11.560	<0.0001
$\phi$ ( <i>S</i> )	2.193	0.630	1112	3.483	<0.0001
$\phi$ ( <i>N</i> )	0.176	0.013	1112	13.800	<0.0001
$\beta$ (int)	-0.123	0.021	1112	-5.912	<0.0001
$\beta$ ( <i>TP</i> )	0.545	0.060	1112	9.042	<0.0001
$\gamma$ (int)	0.921	0.019	1112	47.503	<0.0001

int: intercept; soil *pH* (*pH*, dummy variable with value of one for *pH* in the range 5.1 - 6, and value of zero for *pH* in the range 4.1 - 5), slope (*S*, degrees), temperature to precipitation ratio (*TP*, 100°C·mm<sup>-1</sup>), and stand density (*N*, trees per hectare (TPH)).

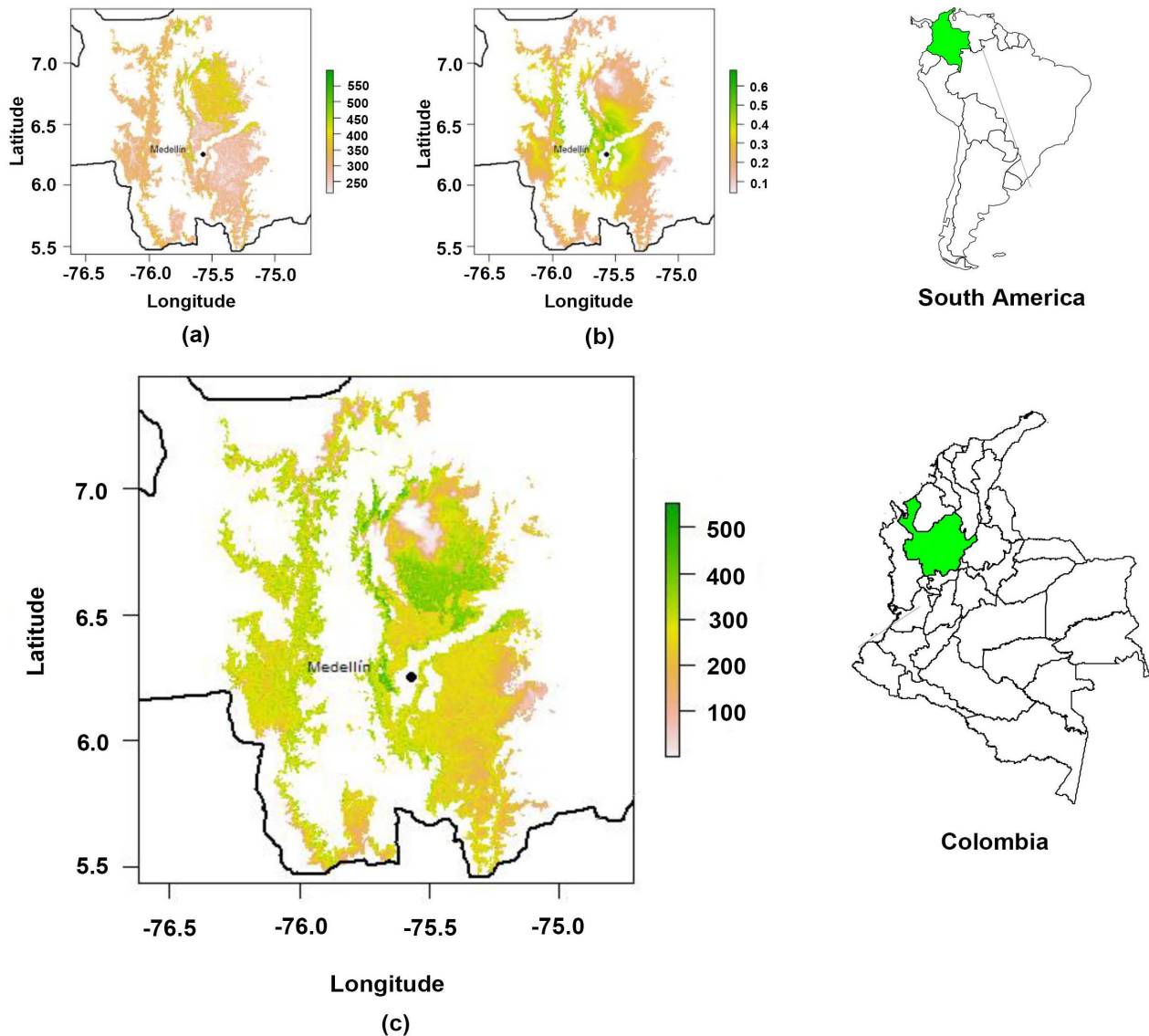


**Figure 3.** Growth and yield of *Pinus patula* in Antioquia, Colombia. (a) volume yield ( $\text{m}^3 \cdot \text{ha}^{-1}$ ) as a function of age by soil  $pH$ ; (b) mean annual increment ( $\text{m}^3 \cdot \text{ha}^{-1} \cdot \text{yr}^{-1}$ ) as a function of age soil  $pH$ . The solid and dashed lines correspond to the average curve for  $pH$  4.1 - 5 and 5.1 - 6, respectively, and the shading region represents their 95% prediction intervals.

are located in the northeastern region of Antioquia (**Figure 4(a)**). High values of the parameter  $\beta$  are observed in the central region of Antioquia (**Figure 4(b)**). At age 20 years, the spatial representation suggests that the yield is high in some areas of the northeastern region of Antioquia (**Figure 4(c)**). The total suitable land for planting *P. patula* in Antioquia is 10,600  $\text{km}^2$ .

#### 4. Discussion

Biophysical conditions that contribute with the optimal growth of *P. patula* in Antioquia are similar to those found in the natural range of the species: annual mean temperature in the range of  $12^\circ\text{C}$  -  $18^\circ\text{C}$ , mean maximum temperature of the hottest month in the range of  $20^\circ\text{C}$  -  $29^\circ\text{C}$ , mean minimum temperature of the coldest month in the range of  $6^\circ\text{C}$  -  $12^\circ\text{C}$ , and annual mean precipitation in the range of 750 - 2000  $\text{mm} \cdot \text{year}^{-1}$  (Gillespie, 1992; Webb et al., 1984). We explored the effect of a wide array of biophysical covariates on *P. patula* growth and yield. Forest yield models expressing stand volume of *P. patula* as a function of environmental covariates were not found in previous studies. Virtually all existing FG&Y models that include the effect of biophysical covariates utilize dominant height or site index as dependent variables. Site index has been expressed as a function of the relative distance between the summit and the plantation site, elevation, slope, soil quality (Evans, 1974), parent material, soil  $pH$ , effective soil depth (Grey, 1979), nitrogen mineralization, topographic position and soil classification (Louw & Scholes, 2006). Moreover, the main variables of a climate envelope model for *P. patula* were, in order, annual mean temperature,



**Figure 4.** Spatial representation of the estimated parameters of the yield model of *P. patula* in the altitudinal range of 1800 - 2800 m.a.s.l. and after excluding protected areas: (a) Asymptote ( $\text{m}^3\cdot\text{ha}^{-1}$ ) or parameter  $\phi$  in the estimated model; (b) Intrinsic growth rate or parameter  $\beta$  in the estimated model; (c) Estimated yield ( $\text{m}^3\cdot\text{ha}^{-1}$ ) at year 20.

the maximum temperature in the warmest month, annual precipitation, precipitation in the driest month, temperature seasonality, and annual temperature range (Leibing et al., 2013; van Zonneveld et al., 2009). The driest quarter's precipitation has been found as a relevant variable to explain *P. patula* growth as well (Louw & Scholes, 2006).

Data used to estimate the FG&Y model corresponded to unthinned, unmanaged and genetically unimproved forest plantations, and characterized *P. patula* plantations in Antioquia and other regions of Colombia as well. The vBCR model can be estimated using data from temporary plots representing contrasting environmental conditions (Pienaar & Turnbull, 1973), like the data used in this research. The asymptote ( $\phi$ ) and intrinsic growth rate ( $\beta$ ) parameters in the

vBCR have a well-known relationship with environmental covariates (Louw, 1999; Louw & Scholes, 2002, 2006).

Out of the biophysical covariates explored, we selected soil  $pH$ , terrain slope, the temperature to precipitation ratio because they exhibited a distinct relationship with parameters  $\phi$  and  $\beta$ . We considered  $TP$  as a reasonable explanatory variable for *P. patula* growth, as studies on tropical forest growth suggest that total biomass is explained by  $TP$  (Brown & Lugo, 1982). This index reflects the water availability to plants due to potential evapotranspiration that is proportional to air temperature (Lugo et al., 1988). Likewise, since  $TP$  can easily be calculated using  $Amt$  and  $Amp$ , it represents a good index to be used by practitioners and investors compared to other measures like the water deficit index. Regarding soil  $pH$  and slope as soil and topographic factors, respectively, they are found to influence forest production and their corresponding asymptote in yield models (Evans, 1974; Grey, 1979; Louw & Scholes, 2006). These biophysical covariates can be easily obtained from field measurements, facilitating the forest productivity evaluation. The finding that no covariate was related to the parameter  $\gamma$  is supported by the theory that the allometric constant is directly related to the way in which a specific species can grow and survive (Pienaar & Turnbull, 1973).

Density is usually assumed to be more related to the intrinsic growth rate than to the asymptote (Pienaar & Turnbull, 1973). However, stand density was found to be an explanatory variable related to the asymptote. In this case, the relationship between stand density and the asymptote may be the result of the effect of contrasting environmental conditions on the stand survival rates.

The estimated asymptotes in this study are in the range of maximum volume values previously reported for *P. patula* in Latin America: 360  $m^3 \cdot ha^{-1}$  at year 48 in Colombia (Ramírez et al., 2014), and 180 - 350  $m^3 \cdot ha^{-1}$  at year 40 in Mexico (Santiago-García et al., 2014); but less than the maximum volume values reported in Africa: 550  $m^3 \cdot ha^{-1}$  at year 31 in Ethiopia (Lemenih et al., 2004); and 900  $\pm$  50  $m^3 \cdot ha^{-1}$  at year 41 in Angola (Delgado-Matas & Pukkala, 2012). However, these maximum values of volume correspond to average potential timber production and seem to be related to one location or one small area. That is the case of a volume value of 843  $m^3 \cdot ha^{-1}$  at year 25 contained in our dataset (Table 1).

The 95% prediction intervals of the forest yield and  $MAI$  suggest a high variability in timber production for *P. patula* plantations in Antioquia, Colombia. The range of the maximum  $MAI$  and its associated biological rotation are wider than previously reported (Table 4). The observed variability of the growth and yield of *P. patula* leads to considerable uncertainty, thereby having significant implications for financial profitability and risk of timberland investments (Restrepo et al., 2012).

The estimated model can be considered as a baseline for analyzing timber production in Antioquia, Colombia, by using data from unthinned, unmanaged, and genetically unimproved *P. patula* plantations. Hence, the potential timber

**Table 4.** Mean annual increment and biological optimal rotation for *P. patula*.

Country or region	Mean annual increment, <i>MAI</i> (m <sup>3</sup> ·ha <sup>-1</sup> ·yr <sup>-1</sup> )	Time required to attain <i>MAI</i> (yr)	Reference
Colombia	5.3 - 43 <sup>ab</sup>	9 - 30 <sup>a</sup>	This study
Colombia	19 <sup>a</sup>	13 <sup>a</sup>	(Osorio et al., 2014)
Colombia	13 - 16	5	(Endo, 1994)
Mexico	12 - 28	8 - 11	(Dvorak et al., 2007)
Mexico	10 - 13	5	(Lopez-Upton et al., 2005)
Mexico	18 <sup>a</sup>	13 <sup>a</sup>	(Santiago-García et al., 2015)
Argentina	23 - 24 <sup>a</sup>	16 - 21 <sup>a</sup>	(Verzino et al., 1999)
South Africa	21	20	(Grey, 1979)
Angola	20 <sup>a</sup>	16 <sup>a</sup>	(Delgado-Matas & Pukkala, 2012)
Mpumalanga	7.7 - 25.5	13 - 14	(Pallett, 1999)
Tropical	17 - 42 <sup>c</sup>	10 - 15	(Lugo et al., 1988)

<sup>a</sup>Maximum *MAI* and biological rotation, <sup>b</sup>95% prediction interval; <sup>c</sup>It is a conversion of mean annual biomass increment of 14 ton·ha<sup>-1</sup>·yr<sup>-1</sup> to mean annual increment using a value of density of 400 kg·m<sup>-3</sup>.

production is likely to be higher under intensive forest management practices. The estimated model can be used to estimate and predict the yield of *P. patula* in other Colombian regions with environmental conditions similar to those represented in this research. However, it is strongly recommended to use forest inventory data and independent forest yield models to validate those estimations.

## 5. Conclusion

A broad range of environmental conditions was used to estimate the vBCR model type for FG&Y. The modeling approach explicitly includes biophysical covariates, and contributes to the identification of the main drivers of *P. patula* growth in Antioquia, Colombia. The asymptote ( $\phi$ ) was estimated as a function of soil *pH*, slope of the terrain and stand density. The intrinsic growth rate ( $\beta$ ) was estimated as a function of the temperature to precipitation ratio. The latter is a very interesting and promising, ecological-theoretical index to be used in FG&Y studies regardless of the species. Moreover, since the model includes climate variables, it can be used to examine potential effects of future climatic conditions on FG&Y. Although more biophysical covariates representing site quality factors were examined, they were not included in the model because they may explain the same variability as selected covariates. Moreover, selected biophysical covariates can be obtained easily from field measurements taken by practitioners, when they conduct technical feasibility studies of timberland investments. The allometric constant ( $\gamma$ ) was not related to environmental covariates because it reflects the species' autoecology of growth. Lower and upper bounds of the 95% prediction intervals for growth and yield were determined as a function of the parameters  $\phi$  and  $\beta$ . The results suggest that FG&Y of *P. patula* is highly variable, which has significant implications for financial profitability and

risk evaluation in forest plantations. The estimated parameters  $\phi$  and  $\beta$ , and yield of *P. patula* were represented in maps to identify the most suitable areas where *P. patula* can be planted in Antioquia. The estimated model, growth and yield curves, and forest yield maps provide valuable information for timber investment analysis. Future research should address other important drivers of FG&Y such as genetics and silvicultural treatments to determine volume gains associated with intensive forest management practices.

## Acknowledgements

This research was funded by the Project “Determinantes Espacialmente Explícitos de Transiciones en Coberturas Terrestres con Significativo Impacto para la Provisión de Servicios Ecosistémicos”, which is part of the research program “Gestión del Riesgo por Cambio Ambiental en Cuencas Hidrográficas”, funded by Colciencias. We sincerely thank to Cesar Urrego, Álvaro Lema, Rodolfo Parra, Victor Gutiérrez, Gabriel Lopera, Ingrid Mazo, Juan David Arango, and Astrid Gil for their invaluable contribution to this research. We also would like to thank the foresters, technicians and people who were directly responsible for field measurements which were used to consolidate the dataset for this research.

## Conflicts of Interest

The authors declare no conflicts of interest regarding the publication of this paper.

## References

- Allen, H. L., Fox, T. R., & Campbell, R. G. (2005). What Is Ahead for Intensive Pine Plantation Silviculture in the South? *Southern Journal of Applied Forestry*, 29, 62-69.
- Antón-Fernández, C., Burkhart, H. E., Strub, M., & Amateis, R. L. (2011). Effects of Initial Spacing on Height Development of Loblolly Pine. *Forest Science*, 57, 201-211.
- Bravo-Oviedo, A., del Río, M., & Montero, G. (2007). Geographic Variation and Parameter Assessment in Generalized Algebraic Difference Site Index Modelling. *Forest Ecology and Management*, 247, 107-119. <https://doi.org/10.1016/j.foreco.2007.04.034>
- Brown, S., & Lugo, A. E. (1982). The Storage and Production of Organic Matter in Tropical Forest and Their Role in the Global Carbon Cycle. *Biotropica*, 14, 161-187. <https://doi.org/10.2307/2388024>
- Buford, M., & Burkhart, H. E. (1987). Genetic Improvement Effects on Growth and Yield of Loblolly Pine Plantations. *Forest Science*, 33, 707-724.
- Burkhart, H. E., Avery, T. E., & Bullock, B. P. (2018). *Forest Measurements* (6th ed.). Long Grove, IL: Waveland Press, Inc.
- Calegario, N., Daniels, R. F., Maestri, R., & Neiva, R. (2005). Modeling Dominant Height Growth Based on Nonlinear Mixed-Effects Model: A Clonal *Eucalyptus* Plantation Case Study. *Forest Ecology and Management*, 204, 11-20. <https://doi.org/10.1016/j.foreco.2004.07.051>
- Clutter, J. L., Fortson, J. C., Pienaar, L. V., Brister, G. H., & Bailey, R. L. (1992). *Timber Management: A Quantitative Approach* (Reprint). New York: John Wiley & Sons, Inc.

- Cubbage, F. W., Mac Donagh, P., Sawinski, J., Rubilar, R., Donoso, P., Ferreira, A., Álvarez, J. et al. (2007). Timber Investment Returns for Selected Plantations and Native Forest in South America and the Southern United States. *New Forests*, *33*, 237-255. <https://doi.org/10.1007/s11056-006-9025-4>
- Cubbage, F., Koesbandana, S., Mac Donagh, P., Rubilar, R., Balmelli, G., Morales, V., Phillips, R. et al. (2010). Global Timber Investments, Wood Costs, Regulation, and Risk. *Biomass and Bioenergy*, *34*, 1667-1678. <https://doi.org/10.1016/j.biombioe.2010.05.008>
- DANE (2004). *Commercial Forest Plantations Census in Antioquia 2002-2003*. Bogotá: National Administrative Department of Statistics.
- Delgado-Matas, C., & Pukkala, T. (2012). Growth and Yield of Nine Pine Species in Angola. *Journal of Forestry Research*, *23*, 197-204. <https://doi.org/10.1007/s11676-012-0239-3>
- Dvorak, W. S., Kietzka, E., Hodge, G. R., Nel, A., dos Santos, G. A., & Gantz, C. (2007). Assessing the Potential of *Pinus herrerae* as a Plantation Species for the Subtropics. *Forest Ecology and Management*, *242*, 598-605. <https://doi.org/10.1016/j.foreco.2007.01.076>
- Endo, M. (1994). CAMCORE: Twelve Years of Contribution to Reforestation in the Andean Region of Colombia. *Forest Ecology and Management*, *63*, 219-233. [https://doi.org/10.1016/0378-1127\(94\)90112-0](https://doi.org/10.1016/0378-1127(94)90112-0)
- Evans, J. (1974). Some Aspects of the Growth of *Pinus patula* in Swaziland. *Commonwealth Forest Review*, *53*, 57-62.
- Farr, T. G., Rosen, P. A., Caro, E., Crippen, R., Duren, R., Hensley, S., Alsdorf, D. et al. (2007). The Shuttle Radar Topography Mission. *Reviews of Geophysics*, *45*, RG2004. <https://doi.org/10.1029/2005RG000183>
- Fekedulegn, D., Mac Siurtain, M. P., & Colbert, J. J. (1999). Parameter Estimation of Nonlinear Growth Models in Forestry. *Silva Fennica*, *33*, 327-336. <https://doi.org/10.14214/sf.653>
- Gillespie, A. J. (1992). *Pinus patula Schiede and Deppe: Patula Pine*. New Orleans, LA: USDA.
- Gómez-Ossa, L. F. (2011). *Inherent Vulnerability of the Protected Areas in the Department of Antioquia*. Forest Engineering Thesis, Medellín: Department of Forest Sciences, National University of Colombia.
- González, H. (1994). *Analysis of the Growth of *Prioria copaifera* Grisebach in Natural Conditions through Mathematical Models*. Master of Science Thesis, Medellín: Department of Forest Sciences, National University of Colombia.
- Grey, D. (1979). Site Quality Prediction for *Pinus patula* in the Glangarry Area, Transkei. *South African Forestry Journal*, *111*, 44-48. <https://doi.org/10.1080/00382167.1979.9630207>
- Günter, S., González, P., Álvarez, G., Aguirre, N., Palomeque, X., Haubrich, F., & Weber, M. (2009). Determinants for Successful Reforestation of Abandoned Pastures in the Andes: Soil Conditions and Vegetation Cover. *Forest Ecology and Management*, *258*, 81-91. <https://doi.org/10.1016/j.foreco.2009.03.042>
- Hall, D. B., & Bailey, R. L. (2001). Modeling and Prediction of Forest Growth Variables Based on Multilevel Nonlinear Mixed Models. *Forest Science*, *47*, 311-321.
- Henskens, F. L., Battaglia, M., Cherry, M. L., & Beadle, C. L. (2001). Physiological Basis of Spacing Effects on Tree Growth and Form in *Eucalyptus globulus*. *Trees-Structure and Function*, *15*, 365-377. <https://doi.org/10.1007/s004680100114>



- Hijmans, R., Cameron, S., Parra, J., Jones, P., & Jarvis, A. (2005). Very High Resolution Interpolated Climate Surfaces for Global Land Areas. *International Journal of Climatology*, 25, 1965-1978. <https://doi.org/10.1002/joc.1276>
- Hijmans, R., van Etten, J., Cheng, J., Mattiuzzi, M., Sumner, M., Greenberg, J., Shortridge, A. et al. (2016). *Geographic Data Analysis and Modeling: Raster R Package*.
- ICA (2015). *Colombian Forest Plantation Database*. Instituto Colombiano Agropecuario. Dirección Técnica de Epidemiología y Vigilancia Fitosanitaria. Programa Fitosanitario Forestal.
- IGAC (2007). *General Study of Soils and Land Zoning: Department of Antioquia*. Instituto Geográfico Agustín Codazzi. Subdirección Agrológica.
- Land, S. B. J., Roberts, S. D., & Duzan, H. J. (2004). Genetic and Spacing Effects on Loblolly Pine Plantation Development through Age 17. In K. F. Connor (Ed.), *12th Biennial Southern Silvicultural Research Conference. Gen. Tech. Rep. SRS-71* (pp. 413-419, 594 p.). Asheville, NC: U.S. Department of Agriculture, Forest Service, Southern Research Station.
- Leibing, C., Signer, J., van Zonneveld, M., Jarvis, A., & Dvorak, W. (2013). Selection of Provenances to Adapt Tropical Pine Forestry to Climate Change on the Basis of Climate Analogs. *Forests*, 4, 155-178. <https://doi.org/10.3390/f4010155>
- Lemenih, M., Gidyelew, T., & Teketay, D. (2004). Effects of Canopy Cover and Understorey Environment of Tree Plantations on Richness, Density and Size of Colonizing Woody Species in Southern Ethiopia. *Forest Ecology and Management*, 194, 1-10. <https://doi.org/10.1016/j.foreco.2004.01.050>
- Lopera, G. J., & Gutiérrez, V. H. (2000). *Technical and Economical Feasibility of the Utilization of Pinus patula as CO<sub>2</sub> Sink*. Forest Engineering Thesis, Medellín: Department of Forest Sciences, National University of Colombia.
- López, J., de la Torre, R., & Cubbage, F. (2010). Effect of Land Prices, Transportation Costs, and Site Productivity on Timber Investment Returns for Pine Plantations in Colombia. *New Forests*, 39, 313-328. <https://doi.org/10.1007/s11056-009-9173-4>
- Lopez-Upton, J., Donahue, J. K., Plascencia-Escalante, F. O., & Ramirez-Herrera, C. (2005). Provenance Variation in Growth Characters of Four Subtropical Pine Species Planted in Mexico. *New Forests*, 29, 1-13. <https://doi.org/10.1007/s11056-004-8018-4>
- Louw, J. H. (1999). A Review of Site-Growth Studies in South Africa. *South African Forestry Journal*, 185, 57-65. <https://doi.org/10.1080/10295925.1999.9631228>
- Louw, J. H., & Scholes, M. C. (2002). Forest Site Classification and Evaluation: A South African Perspective. *Forest Ecology and Management*, 171, 153-168. [https://doi.org/10.1016/S0378-1127\(02\)00469-3](https://doi.org/10.1016/S0378-1127(02)00469-3)
- Louw, J. H., & Scholes, M. C. (2006). Site Index Functions Using Site Descriptors for *Pinus patula* Plantations in South Africa. *Forest Ecology and Management*, 225, 94-103. <https://doi.org/10.1016/j.foreco.2005.12.048>
- Lugo, A. E., Brown, S., & Chapman, J. (1988). An Analytical Review of Production Rates and Stemwood Biomass of Tropical Forest Plantations. *Forest Ecology and Management*, 23, 179-200. [https://doi.org/10.1016/0378-1127\(88\)90081-3](https://doi.org/10.1016/0378-1127(88)90081-3)
- Mendell, B., de la Torre, R., & Sydor, T. (2006). Timberland Investments in South America: A Profile of Colombia. *Timber Mart South, Quartelery Market News, QIII*, 13-14.
- Moser, J. W., & Hall, O. F. (1969). Deriving Growth and Yield Functions for Uneven-Aged Forest Stands. *Forest Science*, 15, 183-188.
- Osorio, L. F., Restrepo, H. I., & del Valle, J. I. (2014). Selecting Forest Plantations for Dendroenergetic Programs in Colombia. In J. F. Perez, & L. F. Osorio (Eds.), *Forest*

- Biomass as an Energy Alternative: Silvicultural, Technical, and Financial Analysis* (pp. 2-25). Medellín: Universidad de Antioquia.
- Palahi, M., Tome, M., Pukkala, T., Trasobares, A., & Montero, G. (2004). Site Index Model for *Pinus sylvestris* in North-East Spain. *Forest Ecology and Management*, *187*, 35-47. [https://doi.org/10.1016/S0378-1127\(03\)00312-8](https://doi.org/10.1016/S0378-1127(03)00312-8)
- Pallett, R. (1999). Growth and Fibre Yield of *Pinus patula* and *Pinus elliottii* Pulpwood Plantation at High Altitude in Mpumalanga. *South African Forestry Journal*, *187*, 11-17. <https://doi.org/10.1080/10295925.2000.9631251>
- Pienaar, L. V. (1979). An Approximation of Basal Area Growth after Thinning Based on Growth in Unthinned Plantations. *Forest Science*, *25*, 223-232.
- Pienaar, L. V., & Turnbull, K. J. (1973). The Chapman-Richards Generalization of Von Bertalanffy's Growth Model for Basal Area Growth and Yield in Even-Aged Stands. *Forest Science*, *19*, 2-22.
- Pinheiro, J. C., & Bates, D. M. (2000). *Mixed-Effects Models in S and S-PLUS*. New York: Springer. <https://doi.org/10.1007/978-1-4419-0318-1>
- Pinheiro, J., Bate, D., DebRoy, S., Sarkar, D., EISPACk, Heisterkamp, S., R-Team et al. (2017). *Linear and Nonlinear Mixed Effects Models*.
- Ramírez, J. A., León-Peláez, J. D., Craven, D., Herrera, D. A., Zapata, C. M., González-Hernández, M. I., Osorio, W. et al. (2014). Effects on Nutrient Cycling of Conifer Restoration in a Degraded Tropical Montane Forest. *Plant and Soil*, *378*, 215-226. <https://doi.org/10.1007/s11104-014-2024-x>
- Restrepo, H. I., & Orrego, S. A. (2015). A Comprehensive Analysis of Teak Plantation Investment in Colombia. *Forest Policy and Economics*, *57*, 31-37. <https://doi.org/10.1016/j.forpol.2015.05.001>
- Restrepo, Hector Ivan, Orrego, S. A., del Valle, J. I., & Salazar, J. C. (2012). Yield, Optimal Turnover and Profitability in Forest Plantations of *Tectona grandis* and *Pinus patula* in Colombia. *Interciencia*, *37*, 14-20.
- Richards, F. J. (1959). A Flexible Growth Function for Empirical Use. *Journal of Experimental Botany*, *10*, 290-300. <https://doi.org/10.1093/jxb/10.2.290>
- Santiago-García, W., de los Santos-Posadas, H. M., Ángeles-Pérez, G., Corral-Rivas, J., Valdez-Lazalde, J. R., & del Valle-Paniagua, D. H. (2014). Prediction of *Pinus patula* Schl. et Cham. Timber Yield through Diameter Distribution Models. *Agrociencia*, *48*, 87-101.
- Santiago-García, W., de los Santos-Posadas, H. M., Ángeles-Pérez, G., Valdez-Lazalde, J. R., Corral-Rivas, J. J., Rodríguez-Ortiz, G., & Santiago-García, E. (2015). Whole-Stand Growth and Yield Models for *Pinus patula*. *Madera y Bosques*, *21*, 95-110.
- Torres, D. A., & del Valle, J. I. (2007). Growth and Yield Modelling of *Acacia mangium* in Colombia. *New Forests*, *34*, 293-305. <https://doi.org/10.1007/s11056-007-9056-5>
- Torres, D. A., del Valle, J. I., & Restrepo, G. (2012). Site Index for Teak in Colombia. *Journal of Forestry Research*, *23*, 405-411. <https://doi.org/10.1007/s11676-012-0277-x>
- van Zonneveld, M., Jarvis, A., Dvorak, W., Lema, G., & Leibing, C. (2009). Climate Change Impact Predictions on *Pinus patula* and *Pinus tecunumanii* Populations in Mexico and Central America. *Forest Ecology and Management*, *257*, 1566-1576. <https://doi.org/10.1016/j.foreco.2008.12.027>
- Vanclay, J. (1992). Assessing Site Productivity in Tropical Moist Forest: A Review. *Forest Ecology and Management*, *54*, 257-287. [https://doi.org/10.1016/0378-1127\(92\)90017-4](https://doi.org/10.1016/0378-1127(92)90017-4)
- Vanclay, J. (1994). *Modelling Forest Growth and Yield: Applications to Mixed Tropical*

*Forests*. Wallingford: CAB International.

- Verzino, G., Ingaramo, P., Joseau, J., Astini, E., Di Rienzo, J., & Dorado, M. (1999). Basal Area Growth Curves for *Pinus patula* in Two Areas of the Calamuchita Valley, Córdoba, Argentina. *Forest Ecology and Management*, *124*, 185-192.  
[https://doi.org/10.1016/S0378-1127\(99\)00065-1](https://doi.org/10.1016/S0378-1127(99)00065-1)
- Wackerly, D. D., Mendenhall III, W., & Sheaffer, R. L. (2008). *Mathematical Statistics with Applications* (7th ed.). Belmont, CA: Thomson Learning, Inc.
- Walters, D. K., Gregoire, T. G., & Burkhart, H. E. (1989). Consistent Estimation of Site Index Curves Fitted to Temporary Plot Data. *Biometrics*, *45*, 23-33.  
<https://doi.org/10.2307/2532032>
- Wang, Y., Raulier, F., & Ung, C.-H. (2005). Evaluation of Spatial Predictions of Site Index Obtained by Parametric and Nonparametric Methods—A Case Study of Lodgepole Pine Productivity. *Forest Ecology and Management*, *214*, 210-211.  
<https://doi.org/10.1016/j.foreco.2005.04.025>
- Webb, D. B., Wood, P. J., Smith, J. P., & Henman, G. S. (1984). *A Guide to Species Selection for Tropical and Sub-Tropical Plantations*. *Tropical Forestry Paper* (2nd ed.). Oxford: University of Oxford.
- Weiskittel, A. R., Hann, D. W., Kershaw, J. A., & Vanclay, J. K. (2011). *Forest Growth and Yield Modeling*. Hoboken, NJ: John Wiley & Sons, Inc.  
<https://doi.org/10.1002/9781119998518>
- Zapata-Cuartas, M. (2007). Site Index Models for Tropical Plantations: Hierarchical Bayesian Models. In *Proceedings of the XVII National Symposium in Statistics* (30 p.). Cali, Colombia: University of Valle.
- Zeide, B. (1993). Analysis of Growth Equations. *Forest Science*, *39*, 594-617.  
<https://doi.org/10.1093/forestscience/39.3.594>