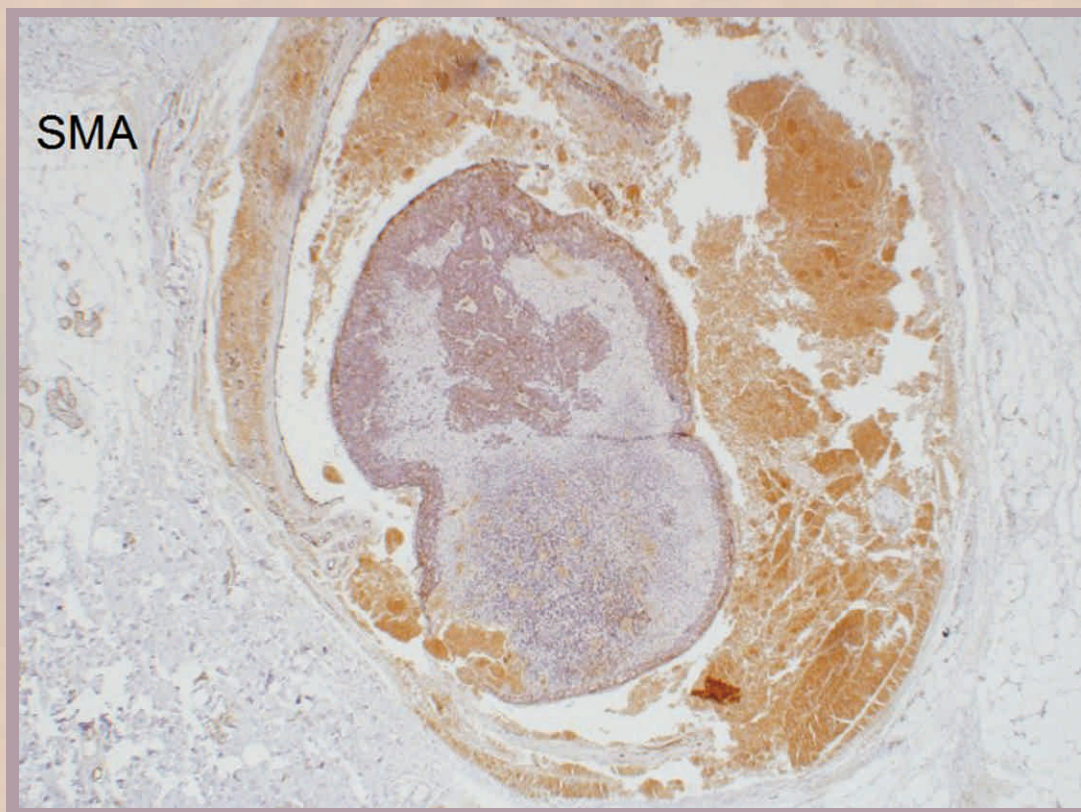


Open Journal of Pathology



Journal Editorial Board

ISSN 2164-6775 (Print) ISSN 2164-6783 (Online)

<http://www.scirp.org/journal/ojpathology>

Editor-in-Chief

Prof. Takuji Tanaka

The Tohkai Cytopathology Institute: Cancer Research and Prevention (TCI-CaRP), Japan

Editorial Advisory Board

Prof. Pranab Kumar Das

School of Infection and Immunity, College of Medical and Dental Sciences, University of Birmingham, UK

Editorial Board

Dr. Asmaa Gaber Abdou

Menofiya University, Egypt

Dr. Julio Aliberti

Cincinnati Children's Hospital Medical Center, USA

Prof. Javier Azúa-Romeo

University of Zaragoza, Spain

Dr. Roberto Bei

University of Rome Tor Vergata, Italy

Dr. Renald Blundell

University of Malta, Malta

Prof. Valquiria Bueno

Federal University of São Paulo, Brazil

Dr. Kailash C. Chadha

Roswell Park Cancer Institute, USA

Prof. Nam Hoon Cho

Yonsei Medical University, South Korea

Dr. Elahé T. Crockett

Michigan State University, USA

Dr. Qinghua Cui

Peking University, China

Prof. Jan M. A. Delabie

University of Oslo and University Hospital of Oslo, Norway

Dr. Patricia DeVilliers

University of Alabama at Birmingham, USA

Dr. Paul C. Evans

University of Sheffield, UK

Prof. Reza Hakkak

University of Arkansas for Medical Sciences, USA

Prof. Kazim Husain

Ponce School of Medicine and Medical Sciences, USA

Prof. Mansour F. Hussein

King Saud University, Saudi Arabia

Prof. Lidia Larizza

University of Milan, Italy

Dr. Anthony W. I. Lo

The Chinese University of Hong Kong, China

Prof. Churilov Leonid Pavlovich

Saint Petersburg State University, Russia

Dr. George Perry

The University of Texas at San Antonio, USA

Prof. Daniela Quaglino

University of Modena and Reggio Emilia, Italy

Dr. Sophia Ran

Southern Illinois University, USA

Dr. Mohammed S. Razzaque

Harvard School of Dental Medicine, USA

Prof. Matteo A. Russo

University of Rome, Italy

Dr. Kunihiro Sakuma

Toyohashi University of Technology, Japan

Dr. Sophie X. Song

University of California at Los Angeles Medical Center, USA

Dr. Gloria H. Su

Columbia University College of Physicians and Surgeons, USA

Dr. Mingqian Wei

Griffith University, Australia

Prof. Han-Seung Yoon

Iida Municipal Hospital, Japan

Table of Contents

Volume 4 Number 2

April 2014

Giant Vascular Eccrine Spiradenoma with Unusual Clinical Presentation: A Case Report K. Krishnan, A. Thomas.....	21
Iron Status of Multiple Transfused Sickle Cell Anaemia Patients Attending a Sickle Cell Clinic in Benin City, Nigeria A. I. Ikusemoro, N. K. D. Halim, O. A. Awodu, F. A. Ehiaghe, E. M. Isoa, I. J. Ehiaghe.....	25
Mandibular Fibrosarcoma and Bile Duct Adenoma in a Pet Rabbit (<i>Oryctolagus cuniculi</i>): A Case Report I. Thas, G. M. Dorrestein, N. A. Cohen-Solal.....	32
Serum Transferrin Receptors in Children with Hypochromic Microcytic Anaemia M. Aslam, S. Mohsin, H. Amin, S. Hussain, N. Ahmed, A. Bhalli.....	41
Proliferative Brenner Tumor with Borderline Mucinous Cystadenocarcinoma of the Ovary in a 75-Year-Old Woman K. Niwa, H. Makino, Y. Yamaguchi, S. Mori, N. Narikawa, T. Tanaka.....	48
Histopathology and Immunohistochemistry Assessments of Acute Experimental Infection by <i>Brucella melitensis</i> in Bucks N. S. Nasruddin, M. Mazlan, M. Z. Saad, H. Hamzah, J. Sabri.....	54
Congenital Microvillous Atrophy, Report of Two Consecutive Siblings with Complete Histologic, Immunohistochemical and Detailed Electron Microscopic Studies, First Report from Iran F. E. Mahjoub, S. N. Niknejad, M. Sadeghian, A. Abdirad, M. N. Sani, I. Jahanzad, E. Talachian.....	64
Cyclic Changes of Nerve Fibers in Human Endometrium T. Tomita, K. Mah.....	68
Cribriform Adenocarcinoma Salivary Gland-Type of the Nasopharynx: Case Report and Review of the Literature T. Bouhafa, A. Elmazghi, O. Masbah, K. Hassouni.....	79

Open Journal of Pathology (OJPathology)

Journal Information

SUBSCRIPTIONS

The *Open Journal of Pathology* (Online at Scientific Research Publishing, www.SciRP.org) is published quarterly by Scientific Research Publishing, Inc., USA.

Subscription rates:

Print: \$79 per issue.

To subscribe, please contact Journals Subscriptions Department, E-mail: sub@scirp.org

SERVICES

Advertisements

Advertisement Sales Department, E-mail: service@scirp.org

Reprints (minimum quantity 100 copies)

Reprints Co-ordinator, Scientific Research Publishing, Inc., USA.

E-mail: sub@scirp.org

COPYRIGHT

COPYRIGHT AND REUSE RIGHTS FOR THE FRONT MATTER OF THE JOURNAL:

Copyright © 2014 by Scientific Research Publishing Inc.

This work is licensed under the Creative Commons Attribution International License (CC BY).

<http://creativecommons.org/licenses/by/4.0/>

COPYRIGHT FOR INDIVIDUAL PAPERS OF THE JOURNAL:

Copyright © 2014 by author(s) and Scientific Research Publishing Inc.

REUSE RIGHTS FOR INDIVIDUAL PAPERS:

Note: At SCIRP authors can choose between CC BY and CC BY-NC. Please consult each paper for its reuse rights.

DISCLAIMER OF LIABILITY

Statements and opinions expressed in the articles and communications are those of the individual contributors and not the statements and opinion of Scientific Research Publishing, Inc. We assume no responsibility or liability for any damage or injury to persons or property arising out of the use of any materials, instructions, methods or ideas contained herein. We expressly disclaim any implied warranties of merchantability or fitness for a particular purpose. If expert assistance is required, the services of a competent professional person should be sought.

PRODUCTION INFORMATION

For manuscripts that have been accepted for publication, please contact:

E-mail: ojpathology@scirp.org



Call for Papers

Open Journal of Pathology

ISSN: 2164-6775 (Print) ISSN: 2164-6783 (Online)
<http://www.scirp.org/journal/ojpathology>

Open Journal of Pathology is an international journal dedicated to the latest advancement of pathology. The goal of this journal is to provide a platform for researchers and academics all over the world to promote, share, and discuss various new issues and developments in pathology related problems. All manuscripts must be prepared in English, and are subject to a rigorous and fair peer-review process. Accepted papers will immediately appear online followed by printed hard copy.

Editor-in-Chief

Prof. Takuji Tanaka

The Tohkai Cytopathology Institute: Cancer Research and Prevention (TCI-CaRP),
Japan

Editorial Advisory Board

Prof. Pranab Kumar Das

School of Infection and Immunity, College of Medical and Dental Sciences,
University of Birmingham, UK

Editorial Board

Dr. Asmaa Gaber Abdou
Dr. Julio Aliberti
Prof. Javier Azúa-Romeo
Dr. Roberto Bei
Dr. Renald Blundell
Prof. Valquiria Bueno
Dr. Kailash C. Chadha
Prof. Nam Hoon Cho
Dr. Elahé T. Crockett
Dr. Qinghua Cui

Prof. Jan M. A. Delabie
Dr. Patricia DeVilliers
Dr. Paul C. Evans
Prof. Reza Hakkak
Prof. Kazim Husain
Prof. Mansour F. Hussein
Prof. Lidia Larizza
Dr. Anthony W. I. Lo
Prof. Churilov Leonid Pavlovich
Dr. George Perry

Prof. Daniela Quaglino
Dr. Sophia Ran
Dr. Mohammed S. Razzaque
Prof. Matteo A. Russo
Dr. Kunihiko Sakuma
Dr. Sophie X. Song
Dr. Gloria H. Su
Dr. Mingqian Wei
Prof. Han-Seung Yoon

Subject Coverage

The journal publishes original papers including but not limited to the following fields:

- Anatomical Pathology
- Clinical Pathology
- Dermatopathology
- Forensic Pathology
- Molecular Pathology
- Oral and Maxillofacial Pathology
- Pathochemistry
- Pathology History
- Pathophysiology
- Plant Pathology
- Psychopathology
- Veterinary Pathology

We are also interested in: 1) Short reports—2 - 5 page papers where an author can either present an idea with theoretical background but has not yet completed the research needed for a complete paper or preliminary data; 2) Book reviews—Comments and critiques.

Notes for Intending Authors

Submitted papers should not have been previously published nor be currently under consideration for publication elsewhere. Paper submission will be handled electronically through the website. All papers are refereed through a peer review process. For more details about the submissions, please access the website.

Website and E-Mail

<http://www.scirp.org/journal/ojpathology>

E-mail: ojpathology@scirp.org