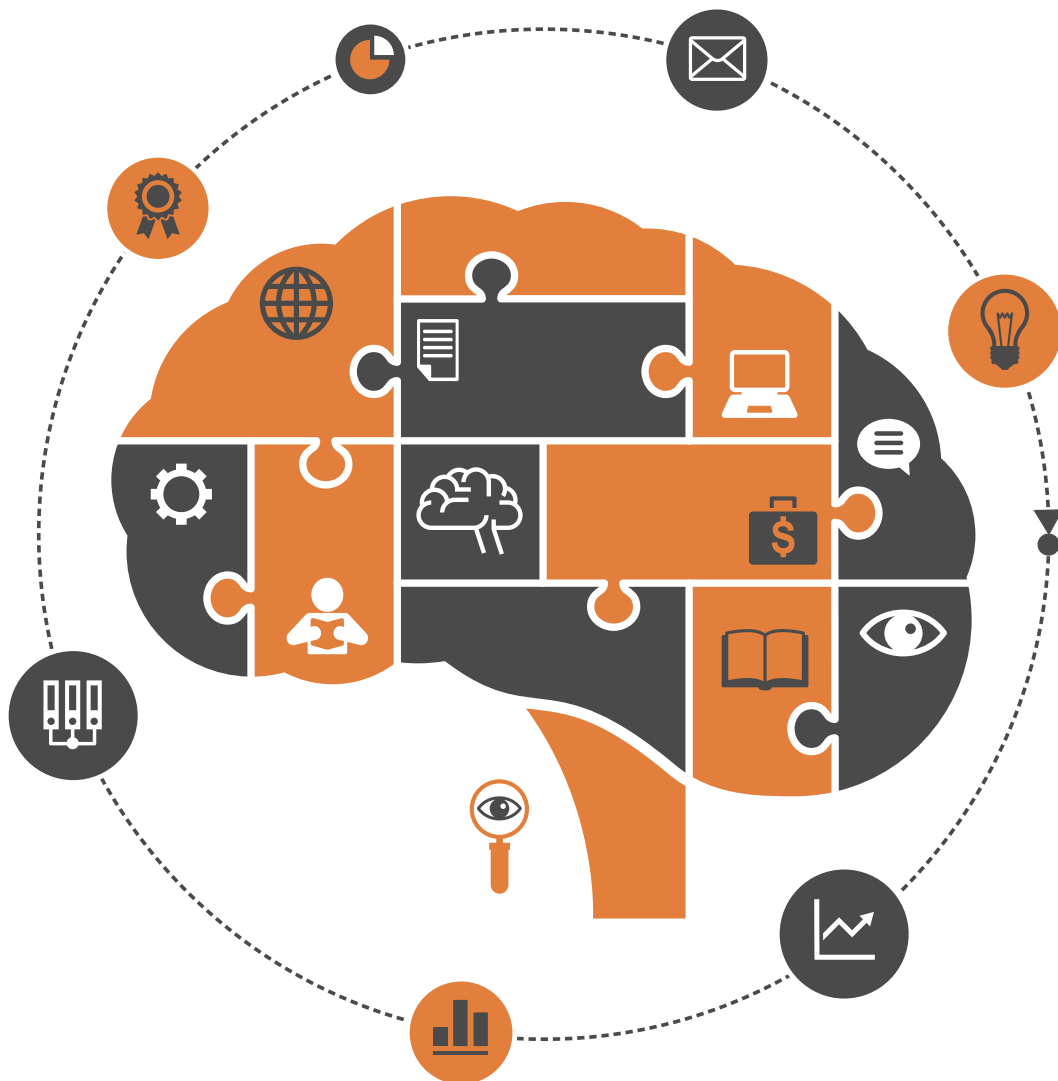


# Psychology



ISSN: 2152-7180



# Journal Editorial Board

ISSN Print: 2152-7180 ISSN Online: 2152-7199

<http://www.scirp.org/journal/psych>

---

## Editor-in-Chief

**Prof. Peter Walla**

University of Newcastle, Australia

## Editorial Board

**Dr. Ruggero Andrisano-Ruggieri**

University of Salerno, Italy

**Dr. Yoram Bar-Tal**

Tel-Aviv University, Israel

**Prof. Adital Ben-Ari**

University of Haifa, Israel

**Prof. Sefa Bulut**

Abant Izzet Baysal University, Turkey

**Dr. Matthew C. Costello**

Indiana University South Bend, USA

**Dr. Jay R. Elliott**

Yale University, USA

**Dr. Thomas Vincent Frederick**

California Baptist University, USA

**Prof. Jay Friedenber**

Manhattan College, USA

**Dr. George Kyriacou Georgiou**

University of Alberta, Canada

**Dr. David M. Goodman**

Harvard Medical School, USA

**Dr. Hong Jiao**

University of Maryland, USA

**Dr. Michelle Y. Kibby**

Southern Illinois University, USA

**Prof. Kenneth A. Kiewra**

University of Nebraska-Lincoln, USA

**Prof. Beth Kurtz-Costes**

University of North Carolina, USA

**Dr. Giovanni Laviola**

Italian National Institute of Health, Italy

**Dr. Katerina Maniadaki**

Technological Educational Institution, Greece

**Prof. Tim F. McLaughlin**

Gonzaga University, USA

**Dr. John T. Mitchell**

Duke University, USA

**Dr. Melodee Mograss**

McGill University, Canada

**Dr. Ora Nakash**

Interdisciplinary Center (IDC) Herzliya, Israel

**Dr. Raffaella Nori**

University of Bologna, Italy

**Dr. Jennifer Kim Plybon Penberthy**

University of Virginia School of Medicine, USA

**Dr. So-Jung Seo**

Kyung Hee University, South Korea

**Prof. Tuomo Antero Takala**

University of Jyväskylä, Finland

**Dr. Massimiliano Versace**

Boston University, USA

**Prof. Edda Weigand**

University of Münster, Germany

**Dr. Berney J. Wilkinson**

Webster International University, USA

**Dr. Patricia Gail Williams**

University of Louisville, USA

**Dr. Hui-Ching Wu**

National Taiwan University, Chinese Taipei

**Dr. Wengang Yin**

Chinese Academy of Sciences, China

# Table of Contents

Volume 7    Number 6

June 2016

|  |     |
|--|-----|
| <b>Pure Partial Awareness or Interaction between the Mask and the Masked Stimuli?</b>  |     |
| J. G. Guo, C. Z. Liu, J. W. Jou, Q. Cui, G. Zhao, S. Tu.....   | 733 |
| <b>The Relationship between Attachment Styles in Adulthood and Attitudes towards Filial Responsibility: A Comparison between Three Generations of Arabs and Jewish Women</b> |     |
| P. Ron.....  | 741 |
| <b>Using Single-Item Measures to Examine the Relationships between Work, Personality, and Well-Being in the Workplace</b>  |     |
| G. M. Williams, A. P. Smith.....   | 753 |
| <b>Partnership Interacts with the Association between Leisure-Time Physical Activity and Positive Affect</b>   |     |
| K. Bador, N. Bador, N. Kerekes.....  | 768 |
| <b>Reactions to a Female Perpetrator of Neglect and Financial Elder Abuse</b>  |     |
| N. J. Caltabiano, M. L. Caltabiano.....  | 776 |
| <b>Carry-Over Effect of Processing Style: From Imagination Task to Recognition Task</b>  |     |
| K. Hine, Y. Itoh.....  | 781 |
| <b>Age-Dependent ERP Correlates of Emotional Episodic Memory</b>   |     |
| B. Tóth, R. Boha, Z. Kardos, B. File, M. Molnár.....   | 793 |
| <b>The Stability of Dispositional Optimism in Relation to Receiving or Not Receiving a Cancer Diagnosis</b>  |     |
| I. S. Bredal, Ø. Ekeberg.....  | 806 |
| <b>Unconscious Priming of Focused Attention Reduces the Attention Deficits of ADHD Patients</b>  |     |
| E. Hosseini, O. Bock, M. Thomas.....   | 815 |
| <b>Improving the Likert Scale of the Children’s Social Skills Test by Means of Rasch Model</b>   |     |
| D. Bartholomeu, M. C. R. da Silva, J. M. Montiel.....  | 820 |
| <b>An 8-Week Stress Management Program for Older Women: A Pilot Randomized Controlled Trial</b>  |     |
| F. Papageorgiou, L. Varvogli, T. Oikonomidi, G. P. Chrousos, C. Darviri.....   | 829 |
| <b>The Quantum Unconscious and the Observant Consciousness</b>   |     |
| R. Freire Lucas.....   | 836 |

**Self-Relatedness and Interpersonal Problems in a Large Psychiatric Outpatient Sample**

E. Bjerke, O. A. Solbakken, S. Friis, J. T. Monsen.....864

**Promoting Social Interactions and Responses to Peer Initiations of a Child with Autism Spectrum Disorder**

K. Niwayama, J. Tanaka-Matsumi.....877

**A Study on Relationship between Depression and Subjective Well-Being of College Student**

X. Zheng.....885

**An Actor-Partner Interdependence Model on Family Resilience and Subjective Wellbeing**

A. H. C. Neo, W. C. Chang, D. S. S. Fung.....889

**The Effects of Psychological Skills Training on Mental Toughness and Psychological Well-Being of Student-Athletes**

J. Golby, P. Wood.....901

**Particularities of the Psychoanalytical Clinic of Aging: Construction of Clinical Cases**

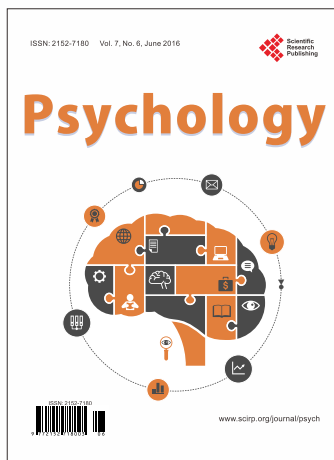
J. M. da Silva, J. de Oliveira Moreira.....914

**The Influence of Semantic and Pragmatic Factors in Wason's Selection Task: State of the Art**

M. D. Valiña, M. Martín.....925

**Predicting Framed Decisions: Simulation or Theory?**

A. Kühberger, C. Luger-Bazinger.....941



## Psychology (PSYCH)

ISSN Print: 2152-7180 ISSN Online: 2152-7199

<http://www.scirp.org/journal/psych>

PSYCH is an international refereed journal dedicated to the latest advancement of Psychology. The goal of this journal is to keep a record of the state-of-the-art research and promote the research work in these fast moving areas.

### Subject Coverage

This journal invites original research and review papers that address the following issues in Psychology. Topics of interest include, but are not limited to:

|  |  |
|--|--|
| Behavioral Psychology                    | Military Psychology                            |
| Biological Basis of Behavior             | National Psychology                            |
| Clinical Psychology                      | Neuropsychology                                |
| Cognitive Psychology                     | Others   |
| Counseling Psychology                    | Political Psychology                           |
| Cultural Psychology                      | Professional Practice                          |
| Economic Psychology                      | Psychological Assessment and Evaluation        |
| Educational Psychology                   | Psychology of Art                              |
| Engineering Psychology                   | Psychology of Religion                         |
| Environmental Psychology                 | Psychotherapy                                  |
| Ethics in Psychology                     | Safety Psychology                              |
| Family Psychology and Couples Psychology | School Psychology                              |
| Forensic Psychology                      | Scientific Psychology                          |
| Gerontology                              | Social Psychology                              |
| Health Psychology                        | Sport Psychology                               |
| Intelligence Psychology                  | Traffic Psychology                             |
| Managerial and Leadership Psychology     | Work, Industrial and Organizational Psychology |

We are also interested in short papers (letters) that clearly address a specific problem, and short survey or position papers that sketch the results or problems on a specific topic. Authors of selected short papers would be invited to write a regular paper on the same topic for future issues of the **PSYCH**.

### Notes for Intending Authors

Submitted papers should not have been previously published nor be currently under consideration for publication elsewhere. Paper submission will be handled electronically through the website. All papers are refereed through a peer review process. For more details about the submissions, please access the website.

### Website and E-Mail

<http://www.scirp.org/journal/psych>

E-mail: [psych@scirp.org](mailto:psych@scirp.org)

## ***What is SCIRP?***

Scientific Research Publishing (SCIRP) is one of the largest Open Access journal publishers. It is currently publishing more than 200 open access, online, peer-reviewed journals covering a wide range of academic disciplines. SCIRP serves the worldwide academic communities and contributes to the progress and application of science with its publication.

## ***What is Open Access?***

All original research papers published by SCIRP are made freely and permanently accessible online immediately upon publication. To be able to provide open access journals, SCIRP defrays operation costs from authors and subscription charges only for its printed version. Open access publishing allows an immediate, worldwide, barrier-free, open access to the full text of research papers, which is in the best interests of the scientific community.

- High visibility for maximum global exposure with open access publishing model
- Rigorous peer review of research papers
- Prompt faster publication with less cost
- Guaranteed targeted, multidisciplinary audience



**Scientific  
Research  
Publishing**

**Website: <http://www.scirp.org>**

**Subscription: [sub@scirp.org](mailto:sub@scirp.org)**

**Advertisement: [service@scirp.org](mailto:service@scirp.org)**