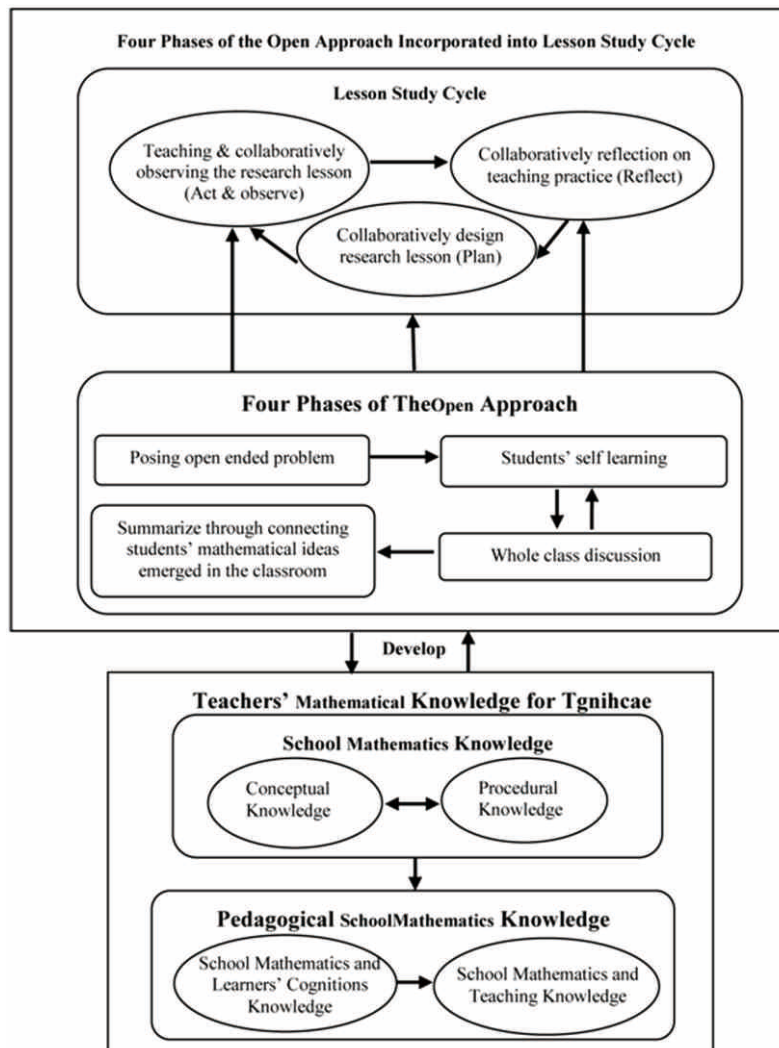




Sociology Mind



Journal Editorial Board

ISSN 2160-083X (Print) ISSN 2160-0848 (Online)

<http://www.scirp.org/journal/sm>

Editor-in-Chief

Prof. Asafa Jalata

University of Tennessee, USA

Editorial Board

Prof. Mario I. Aguilar

University of St. Andrews, UK

Dr. Mohammed H. Ali

Georgia State University, USA

Prof. Agni Aliu

South East European University, Macedonia

Dr. Jin Young Choi

Sam Houston State University, USA

Dr. Isabella Crespi

University of Macerata, Italy

Dr. Maurizio Esposito

University of Cassino and Lazio Meridionale, Italy

Prof. Teodoro Hernandez de Frutos

Universidad Pública de Navarra, Spain

Prof. Ezekiel B. Gebissa

Kettering University, USA

Dr. Cem Gercek

Hacettepe University, Turkey

Prof. Faye V. Harrison

University of Florida, USA

Prof. Gloria Jones Johnson

Iowa State University, USA

Prof. Pat Lauderdale

Arizona State University, USA

Prof. Madhu S. Mohanty

California State University, USA

Dr. Ali Rahimi

Bahcesehir University, Turkey

Prof. Daryll E. Ray

University of Tennessee, USA

Dr. William I. Robinson

University of California-Santa Barbara, USA

Dr. Wanda Rushing

University of Memphis, USA

Dr. Rafooneh M. Sani

Eastern Mediterranean University, Turkey

Dr. Harwood D. Shaffer

University of Tennessee, USA

Dr. Tapio Toivanen

University of Helsinki, Finland

Dr. Deniz Yucel

William Paterson University of New Jersey, USA

Dr. Lu Zheng

Tsinghua University, China

Guest Reviewers

Md. Azmeary Ferdoush

Kurtuluş Yılmaz Genç

Table of Contents

Volume 4 Number 4

October 2014

The Influence of Visual Distraction on Awareness Test	
R. Y.-T. Lo, M.-W. Suen.....	259
The Reconstruction of Sociology in Eastern Europe—Expectations and Dilemmas	
M. Ule.....	264
The Impact of Economic Capital, Social Capital and Cultural Capital: Chinese Families’ Access to Educational Resources	
J. B. Fan.....	272
The Effect of Wealth Inequality on Higher Education Outcomes: A Critical Review	
E. Rauscher, W. Elliott III.....	282
Individuals’ Knowledge, Beliefs, Attitudes, and Behaviors toward Animal Releasing	
J.-M. Chen, M.-L. Lin, M.-W. Suen.....	298
Social Institutional Influence on Fisheries in Two Fishing Communities in the Volta Lake in Ghana	
M. A. Amu-Mensah, F. K. Amu-Mensah, E. K. Abban.....	305
Development of Teachers’ Mathematical Knowledge for Teaching by Using the Innovation of Lesson Study and Open Approach	
A. Sudejamnong, K. Robsouk, S. Loipha, M. Inprasitha.....	317
The Relationship between Youth Violence, Victimization, and Educational Outcomes	
A. R. Wilczak.....	328
Identity Formation in Chinese Christian Churches in the United States	
Y.-H. C. Kuo.....	341

Sociology Mind (SM)

Journal Information

SUBSCRIPTIONS

The *Sociology Mind* (Online at Scientific Research Publishing, www.SciRP.org) is published quarterly by Scientific Research Publishing, Inc., USA.

Subscription rates:

Print: \$69 per copy.

To subscribe, please contact Journals Subscriptions Department, E-mail: sub@scirp.org

SERVICES

Advertisements

Advertisement Sales Department, E-mail: service@scirp.org

Reprints (minimum quantity 100 copies)

Reprints Co-ordinator, Scientific Research Publishing, Inc., USA.

E-mail: sub@scirp.org

COPYRIGHT

COPYRIGHT AND REUSE RIGHTS FOR THE FRONT MATTER OF THE JOURNAL:

Copyright © 2014 by Scientific Research Publishing Inc.

This work is licensed under the Creative Commons Attribution International License (CC BY).

<http://creativecommons.org/licenses/by/4.0/>

COPYRIGHT FOR INDIVIDUAL PAPERS OF THE JOURNAL:

Copyright © 2014 by author(s) and Scientific Research Publishing Inc.

REUSE RIGHTS FOR INDIVIDUAL PAPERS:

Note: At SCIRP authors can choose between CC BY and CC BY-NC. Please consult each paper for its reuse rights.

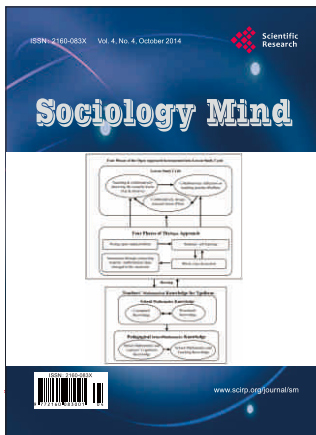
DISCLAIMER OF LIABILITY

Statements and opinions expressed in the articles and communications are those of the individual contributors and not the statements and opinion of Scientific Research Publishing, Inc. We assume no responsibility or liability for any damage or injury to persons or property arising out of the use of any materials, instructions, methods or ideas contained herein. We expressly disclaim any implied warranties of merchantability or fitness for a particular purpose. If expert assistance is required, the services of a competent professional person should be sought.

PRODUCTION INFORMATION

For manuscripts that have been accepted for publication, please contact:

E-mail: sm@scirp.org



Sociology Mind

ISSN Print: 2160-083X ISSN Online: 2160-0848

<http://www.scirp.org/journal/sm>

SM is an international refereed dedicated to the latest advancement of sociology. The goal of this journal is to keep a record of the state-of-the-art research and promote the research work in the areas.

Editor-in-Chief

Prof. Asafa Jalata

University of Tennessee, USA

Editorial Board

Prof. Mario I. Aguilar
Dr. Mohammed H. Ali
Prof. Agni Aliu
Dr. Jin Young Choi
Dr. Isabella Crespi
Dr. Maurizio Esposito
Prof. Teodoro Hernandez de Frutos
Prof. Ezekiel B. Gebissa
Dr. Cem Gercek
Prof. Faye V. Harrison
Prof. Gloria Jones Johnson

Prof. Pat Lauderdale
Prof. Madhu S. Mohanty
Dr. Ali Rahimi
Prof. Daryll E. Ray
Dr. William I. Robinson
Dr. Wanda Rushing
Dr. Rafooneh M. Sani
Dr. Harwood D. Shaffer
Dr. Tapio Toivanen
Dr. Deniz Yucel
Dr. Lu Zheng

Subject Coverage

The main purpose and goal of this journal is to synergize sociological imagination in the 21st century toward a critical understanding of new social and cultural forces that call for scientific interpretation and analysis of facts and values. Specifically, it seeks to:

- Develop sociological models and methods to unravel and resolve inter-and-intra-societal problems that cause dysfunctional behaviors among people, communities and nations;
- Foster interdisciplinarity as a vehicle of scientific dialogue and communication toward a better world;
- Promote analytical research and inquiry in socio-cultural aspects of human conditions that warrant scientific interventions;
- Sociological inquiry and research;
- Sociology and innovation.

These three main objectives may be further broken into a broad range of aspects and issues that fall within the encyclopedic scope of sociological inquiry and research. The Journal also publishes: 1) Short reports—2-5 page papers in which an author can either present an idea with a theoretical background but has not yet completed the research needed for a complete paper, or preliminary data; 2) Book reviews—Comments and critiques.

Notes for Intending Authors

Submitted papers should not have been previously published nor be currently under consideration for publication elsewhere. Paper submission will be handled electronically through the website. All papers are refereed through a peer review process. For more details about the submissions, please access the website.

Website and E-Mail

<http://www.scirp.org/journal/sm>

E-mail: sm@scirp.org