



# Adaptation and Participatory Evaluation of Shrub Forage Legumes in Highlands of Sud-Kivu, Democratic Republic of the Congo (DRC)

Katunga Musale M. Dieudonné<sup>1,2</sup>

<sup>1</sup>International Center for Tropical Agriculture (CIAT), Bukavu, DRC

<sup>2</sup>Institut National pour l'Etude et la Recherche agronomiques (INERA)-Mulungu, Bukavu, DRC

Email: katungamusale@yahoo.fr, stylonya@gmail.com

**How to cite this paper:** Dieudonné, K.M.M. (2020) Adaptation and Participatory Evaluation of Shrub Forage Legumes in Highlands of Sud-Kivu, Democratic Republic of the Congo (DRC). *Open Access Library Journal*, 7: e6165.

<https://doi.org/10.4236/oalib.1106165>

**Received:** February 13, 2020

**Accepted:** March 21, 2020

**Published:** March 24, 2020

Copyright © 2020 by author(s) and Open Access Library Inc.

This work is licensed under the Creative Commons Attribution International License (CC BY 4.0).

<http://creativecommons.org/licenses/by/4.0/>



Open Access

## Abstract

Livestock in the highlands of DRC faces several constraints. It strongly decreased due to high rate of mortality, looting during the wars, lack of animal feeding and livestock still reared again under traditional system. However, shrub forage legumes can contribute to mitigate one part of these constraints and play an important role to improve livestock production. The objective of this study is to use for adaptation the improved shrub forage legumes previously tested by the International Center for Tropical Agriculture (CIAT) Colombia in tropical Central Asia and Latin America whose ecological conditions are similar to those in DRC. Fifteen shrub forage legumes were randomly planted. With 3 replications, nine plantations were counted per specie or accession. The cutting period was for eight weeks. The best yield shrubs were in Mulungu *L. diversifolia* K782, *L. diversifolia* 22192 and in Nyangezi *C. calothyrsus*. The choice of the farmers in their participatory evaluation was generally in agreement with the agronomic trial outcomes.

## Subject Areas

Agricultural Science

## Keywords

Shrubs Forage Legumes, Farmer's Evaluation, Yield, Highland, DRC

## 1. Introduction

In the eastern highlands of the Democratic Republic of the Congo (DRC), livestock faces several constraints that hinder its harmonious development. It strongly

decreased following several constraints among which the high death rates, lack of animal feeding, social unrests and livestock looting during the wars [1]. There is also the demographic pressure on natural spaces and the increase of malnutrition rate among the population, up to 15% of global malnutrition [2]. The production of fodders to feed small animals is not practiced yet; it is only done in some private cattle farms [3]. Yet multipurpose forage production is a major component in animal livestock systems to enhance animal production, to control erosions and protect the environment. Shade trees play an important role within the agroforestry systems by influencing radiation and wind regimes as well as nutrient and hydrological cycling [4]. This study aimed to use for adaptation, combined with farmers' participatory evaluation the improved shrub forage legumes previously tested by the International Center for Tropical Agriculture (CIAT) Colombia in tropical Central Asia and Latin America whose ecological conditions are similar to those in DRC.

## 2. Material and Methods

### 2.1. Agronomic Trials

**Table 1** shows the location of the sites.

Nyangezi soils are very acidic with low CEC and K than Mulungu site. Shrubs were installed in both sites in January 2009 in Mulungu and Nyangezi sites; see the characteristics of the experimental sites in **Table 1**. Fifteen shrub forage legumes were planted randomly opposing of the direction of the slop and distant by 1.5 m. In the line, they were separated each other by 1 m. A unit plot for every shrub comprised three plantations with 3 replications. At all, there were nine plants per specie or accession and in addition a line of *Calliandra calothyrsus* made a contour of all the trial. The regulation cutting done in January 2010 was made at 50 cm of height for *Desmodium velutinum* and *Flemingia macrophylla* and at 100 cm for *Calliandra calothyrsus*, *Leucaena diversifolia*, *Cratylia argentea* and *Leucaena leucocephala*. The harvest cuttings were made every eight weeks; the first one took place in March 2010 and finished on February 2011. Before every cut, height of plantations was measured, leaves and stems of each specie or accessions were weighed with an electronical weighing balance SF-400 (1 g ± 10 kg). For each specie and accession, a homogeneous sub-sample of 300 g of leaves and stems were taken at every harvest and dried during three months until the constant weight in a hangar at Kalambo CIAT office that reached 40°C to 45°C during the bright time. Nutritional quality (Dry mater = DM, Organic

**Table 1.** Location of the experimental sites and some characteristics.

Site	Location of the site			Soil fertility			
	Latitude	Longitude	Elevation (m asl)	pH	K	P (O)	CEC*
Mulungu	2.19°S	28.47°E	1700	5.15	0.36	3	20
Nyangezi	2.88°S	27.03°E	1580	3.94	0.18	3	3

\*Cationic exchange capacity.

matter = OM, crude proteins = CP, neutral detergent fiber = NDF and True *in vitro* Organic Mater Digestibility = TIVOMD) of only leaf samples was analyzed by near infrared reflectance spectroscopy (NIRS) at the International Livestock Research Institute (ILRI), Addis-Ababa, Ethiopia.

$$\text{Mean fresh leaf and stem yield (MFLSY) in g/plant} \\ = \frac{\text{Fresh weight (g)} \times \text{dry matter (\%)}}{\text{Number of plants} \times 100} [5]$$

Impacts of diseases and insects' damages were observed according to the [5] scale from 1 to 5.

## 2.2. Farmers Participatory Evaluation

Choices of forages in farmer's participatory sessions were evaluated at both sites with the people involved in the seasonal trials. They were organized in a development association. To proceed to choice, farmers were subdivided into 2 groups according to the gender during the rain and dry seasons. A team comprised 5 women and another 5 men. A participating farmer had to select the three best plots in terms of crop performance by dropping a white paper in those plots chosen. Data were presented as ranks of preference by location. After the choice of forages, the two teams met to discuss for a consensus between genders [6].

## 2.3. Data Analysis

Data were statistically computed for descriptive statistics and Analysis of variance (ANOVA) using Tukey test in Genstat, Statview version 5.0. Cluster analysis was calculated by Past version 2.15. The agronomic and farmer's participatory evaluation data were computed. Means and Standard Error of Mean (SEM) are presented.

## 3. Results

### Agronomic Evaluation

#### Nutritive Values

**Table 2** shows the nutritive values of shrub forage legumes.

CP in Mulungu are very good with a range of 19.0% - 28.2% while in Nyangezi it is 17.9% - 27%. ADF at both sites are very high for *D. velutinum* (13218, 334443, 23982 and 23996) and *F. macrophylla* 17403.

#### Diseases and Insect's Attacks

**Table 3** shows the diseases and insects ranks of the shrubs.

Fodders without diseases and pests' damages in Mulungu and in Nyangezi were *C. calothyrsus*, all accessions of *L. diversifolia* (17503, 22192, 15551, K780, K782) and *L. leucocephala* 17263 except for Nyangezi where *L. diversifolia* 17503 suffered from diseases.

**Table 2.** Chemical analysis of forges in the sites.

Shrub forage legumes	Mulungu					Nyangezi				
	DM	OM	CP	ADF	TIVOMD	DM	OM	CP	ADF	TIVMOD
<i>C. argentea</i> 18516	25.6	90.2	24.1	29.9	58.2	23.1	91.6	21.6	30.5	60.5
<i>C. calothyrsus</i>	21.4	94.3	27.2	29.3	55.0	30.7	96.4	21.2	28.2	61.7
<i>D. velutinum</i> 13218	22.9	89.7	22.6	36.4	52.6	27.6	91.7	20.8	33.6	60.7
<i>D. velutinum</i> 33443	27.3	89.7	21.9	37.8	52.5	38.4	92.2	18.9	34.7	61.1
<i>D. velutinum</i> 23982	25.4	89.7	22.1	34.7	52.9	30.8	91.5	19.3	34.2	59.6
<i>D. velutinum</i> 23996	28.3	89.6	19.0	38.9	50.5	31.1	91.3	18.5	35.1	58.9
<i>F. macrophylla</i> 17403	22.5	95.2	23.5	33.9	50.4	29.5	96.8	17.9	32.7	52.8
<i>F. macrophylla</i> 18438	31.6	93.8	26.0	24.5	58.5	28.0	96.6	19.7	30.9	55.1
<i>F. macrophylla</i> 20618	24.5	95.3	22.4	32.6	50.6	27.4	96.5	18.6	31.3	55.6
<i>L. diversifolia</i> 17503	25.4	92.7	29.7	22.9	60.3	32.1	95.0	22.4	26.8	58.7
<i>L. diversifolia</i> 22192	24.6	93.3	28.2	26.1	57.8	32.3	89.7	27.0	30	55.1
<i>L. diversifolia</i> K780	25.7	91.1	25.9	25.7	60.7	31.1	94.4	24.2	25.8	60.7
<i>L. diversifolia</i> K782	24.2	93.6	28.0	26.1	59.6	33.8	96.1	22.8	26.1	60.5
<i>L. leucocephala</i> 17263	24.0	91.1	25.9	25.7	60.6	28.0	96.2	23.9	27.2	61.1
<i>L. diversifolia</i> 15551	24.4	93.4	27.9	28.1	54.8	32.5	96.0	21.6	29.2	57.9

**Table 3.** Ranks of diseases and insects attack of the shrub forage legumes.

Shrubs forage legumes	Mulungu		Nyangezi	
	Diseaes	Insects	Diseases	Insects
<i>C. argentea</i> 18516	2	2	2	2
<i>C. calothyrsus</i>	1	1	1	1
<i>D. velutinum</i> 33443	2	2	2	2
<i>D. velutinum</i> 23982	2	2	2	2
<i>D. velutinum</i> 23996	2	2	2	2
<i>D. velutinum</i> 13218	2	2	2	2
<i>F. macrophylla</i> 17403	2	2	2	2
<i>F. macrophylla</i> 18438	2	2	2	2
<i>F. macrophylla</i> 20618	2	2	2	2
<i>L. diversifolia</i> 17503	1	1	2	1
<i>L. diversifolia</i> 22192	1	1	1	1
<i>L. diversifolia</i> 15551	1	1	1	1
<i>L. diversifolia</i> K780	1	1	1	1
<i>L. diversifolia</i> K782	1	1	1	1
<i>L. leucocephala</i> 17263	1	1	1	1

### Yield Biomass of Shrubs

**Table 4** shows the height and vigor of shrubs.

Similar letters in **Table 4** imply no significant difference according to Tukey grouping. There is a highly significant difference between the means of the height of shrubs ( $P < 0.001$ ) at both sites.

The tallest forages at both sites was *C. calothyrsus*. The best vigor of shrub was observed in Mulungu on *L. diversifolia* (17503, 15551, 22192, K780, K782), *L. leucocephala*, *C. calothyrsus* and in Nyangezi on *C. calothyrsus*.

**Table 5** shows the yield of shrub forage legumes.

Similar letters in **Table 5** imply no significant difference according to Tukey grouping. There was a highly significant difference between the means of fresh leaves weight and stems yield at both sites ( $P < 0.001$ ). The best yield forages were *L. diversifolia* K782, *L. diversifolia* 22192 in Mulungu and *C. calothyrsus* in Nyangezi. At both sites level, *C. calothyrsus* is the best shrub in terms of yield.

**Figure 1** shows the cluster of shrubs.

**Figure 1** shows that the first cluster included *C. calothyrsus* and five accessions of *L. diversifolia* (17503, 22192, 15551, K780, K782), the second cluster included the other shrubs.

### Participatory Evaluation by Farmers

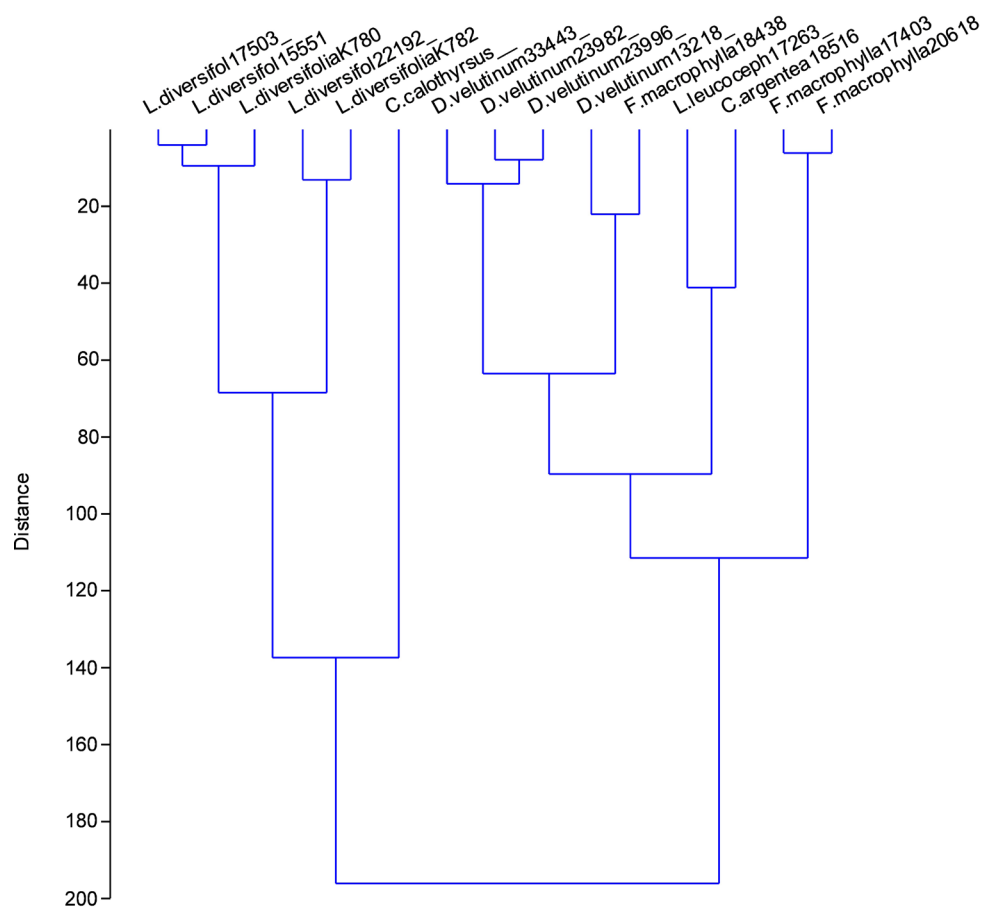
**Table 6** shows the choice of forages by farmers in Mulungu and Nyangezi.

**Table 4.** Height of shrub forage legumes (means and SEM).

Shrub forage legumes	Height (cm)		Vigor	
	Mulungu	Nyangezi	Mulungu	Nyangezi
<i>C. argentea</i> 18516	152.1 ± 6.2 <sup>cd</sup>	123.6 ± 6.1 <sup>bc</sup>	4	3
<i>C. calothyrsus</i>	187.7 ± 5.0 <sup>a</sup>	164.6 ± 8.6 <sup>a</sup>	5	5
<i>D. velutinum</i> 33443	80.1 ± 4.4 <sup>de</sup>	75.1 ± 6.5 <sup>de</sup>	3	4
<i>D. velutinum</i> 23982	70.6 ± 5.4 <sup>de</sup>	71.0 ± 5.2 <sup>de</sup>	3	4
<i>D. velutinum</i> 23996	81.6 ± 8.5 <sup>d</sup>	73.5 ± 4.9 <sup>de</sup>	4	3
<i>D. velutinum</i> 13218	60.3 ± 2.6 <sup>e</sup>	68.1 ± 4.4 <sup>de</sup>	3	3
<i>F. macrophylla</i> 17403	71.0 ± 3.1 <sup>de</sup>	91.3 ± 8.3 <sup>cd</sup>	4	4
<i>F. macrophylla</i> 18438	46.2 ± 2.8 <sup>ef</sup>	71.9 ± 8.7 <sup>de</sup>	2	2
<i>F. macrophylla</i> 20618	75.4 ± 5.0 <sup>de</sup>	76.6 ± 4.8 <sup>d</sup>	3	4
<i>L. diversifolia</i> 17503	170.9 ± 4.9 <sup>bc</sup>	120.1 ± 6.1 <sup>bc</sup>	5	2
<i>L. diversifolia</i> 22192	166.3 ± 4.2 <sup>cd</sup>	133.1 ± 8.9 <sup>b</sup>	5	3
<i>L. diversifolia</i> 15551	166.8 ± 6.2 <sup>c</sup>	125.1 ± 7.2 <sup>bc</sup>	5	3
<i>L. diversifolia</i> K780	177.0 ± 6.9 <sup>b</sup>	130.2 ± 9.8 <sup>bc</sup>	5	3
<i>L. diversifolia</i> K782	170.7 ± 8.2 <sup>bc</sup>	126.7 ± 9.1 <sup>bc</sup>	5	3
<i>L. leucocephala</i> 17263	173.9 ± 7.4 <sup>bc</sup>	104.6 ± 2.7 <sup>c</sup>	5	3
Lsd ( $P < 0.05$ )	18.4	21.9	-	-

**Table 5.** MFLSY of the shrub forage legumes (g/plant and SEM).

Shrub forage legumes	Mulungu	Nyangezi	Means at both sites
<i>C. argentea</i> CIAT 18516	107.2 ± 10.4 <sup>d</sup>	18.6 ± 3.3 <sup>cd</sup>	62.9 ± 9.2 <sup>de</sup>
<i>C. calothyrsus</i>	405.4 ± 38.2 <sup>b</sup>	339.2 ± 51.6 <sup>a</sup>	372.3 ± 32.1 <sup>a</sup>
<i>D. velutinum</i> CIAT 33443	56.8 ± 2.5 <sup>de</sup>	72.9 ± 12.3 <sup>cd</sup>	64.8 ± 7.6 <sup>de</sup>
<i>D. velutinum</i> CIAT 23982	60.3 ± 18.7 <sup>de</sup>	81.3 ± 28.6 <sup>c</sup>	72.3 ± 18.2 <sup>de</sup>
<i>D. velutinum</i> CIAT 23996	67.1 ± 12.5 <sup>de</sup>	71.9 ± 14.8 <sup>cd</sup>	69.5 ± 9.5 <sup>de</sup>
<i>D. velutinum</i> CIAT 13218	7.6 ± 10.5 <sup>ef</sup>	47.3 ± 18.7 <sup>cd</sup>	29.2 ± 10.6 <sup>de</sup>
<i>F. macrophylla</i> CIAT 17403	196.6 ± 38.8 <sup>cd</sup>	124.4 ± 27.4 <sup>bc</sup>	161.6 ± 24.4 <sup>c</sup>
<i>F. macrophylla</i> CIAT 18438	10.8 ± 4.2 <sup>e</sup>	12.8 ± 5.4 <sup>d</sup>	11.9 ± 3.5 <sup>de</sup>
<i>F. macrophylla</i> CIAT 20618	155.3 ± 22.8 <sup>cd</sup>	160.4 ± 32.2 <sup>b</sup>	157.9 ± 19.4 <sup>cd</sup>
<i>L. diversifolia</i> CIAT 17503	399.6 ± 30.1 <sup>bc</sup>	23.1 ± 12.5 <sup>cd</sup>	211.4 ± 31.5 <sup>bc</sup>
<i>L. diversifolia</i> CIAT 22192	447.7 ± 33.8 <sup>ab</sup>	98.4 ± 6.3 <sup>bc</sup>	273.0 ± 36.5 <sup>bc</sup>
<i>L. diversifolia</i> ILRI 15551	366.7 ± 34.1 <sup>bc</sup>	48.7 ± 21.4 <sup>cd</sup>	207.7 ± 35.6 <sup>bc</sup>
<i>L. diversifolia</i> K780	354.8 ± 39.7 <sup>bc</sup>	72.8 ± 20.7 <sup>cd</sup>	213.8 ± 32.5 <sup>bc</sup>
<i>L. diversifolia</i> K782	511.2 ± 50.5 <sup>a</sup>	57.2 ± 15.9 <sup>cd</sup>	284.2 ± 46.4 <sup>b</sup>
<i>L. leucocephala</i> CIAT 17263	200.0 ± 21.9 <sup>c</sup>	7.8 ± 2.1 <sup>de</sup>	103.9 ± 19.5 <sup>d</sup>
Lsd (P < 0.05)	93.9	67.8	80.7

**Figure 1.** Cluster based on variables MFLSY, CP and height of shrubs legumes at both sites.

**Table 6.** Choice by farmers.

Shrub forage legumes	Rainy season		Dry season	
	Mulungu	Nyangezi	Mulungu	Nyangezi
<i>C. calothyrsus</i>	1 <sup>st</sup>	1 <sup>st</sup>	1 <sup>st</sup>	2 <sup>nd</sup>
<i>C. argentea</i>	0	0	2 <sup>nd</sup>	0
<i>D. velutinum</i> 13218	0	5 <sup>th</sup>	0	0
<i>D. velutinum</i> 23982	0	0	0	3 <sup>rd</sup>
<i>D. velutinum</i> 23996	0	0	0	5 <sup>th</sup>
<i>F. macrophylla</i> 17403	0	0	0	0
<i>F. macrophylla</i> 18438	0	0	0	4 <sup>th</sup>
<i>F. macrophylla</i> 20618	0	0	0	1 <sup>st</sup>
<i>L. diversifolia</i> 15551	3 <sup>rd</sup>	0	5 <sup>th</sup>	0
<i>L. diversifolia</i> 22192	2 <sup>nd</sup>	0	0	0
<i>L. diversifolia</i> K780	6 <sup>th</sup>	4 <sup>th</sup>	0	0
<i>L. diversifolia</i> K782	4 <sup>th</sup>	2 <sup>nd</sup>	3 <sup>rd</sup>	0
<i>L. leucocephala</i>	5 <sup>th</sup>	3 <sup>rd</sup>	4 <sup>th</sup>	0

During the rainy season, *C. calothyrsus* was the most chosen at the first step in both the sites following by *L. diversifolia* 22192 in Mulungu and *L. diversifolia* K782 in Nyangezi. In dry season first choice was made for *C. calothyrsus* in Mulungu and *F. macrophylla* 20,618 in Nyangezi followed by *C. calothyrsus* in Nyangezi and *C. argentea* in Mulungu.

#### 4. Discussion and Conclusion

The impact of diseases and insects' attacks was lower in Mulungu and Nyangezi than in Colombia [7]. The healthiest shrub forage legumes at both sites were *C. calothyrsus*, *L. diversifolia* 22192, *L. diversifolia* 15551, *L. diversifolia* K780, *L. diversifolia* K782 and *L. leucocephala*. In Mulungu, the height of *C. calothyrsus* was 187.7 cm a mean after two weeks and is tallest than 170 cm observed in Rwanda after six months [8]. At both the sites, *C. calothyrsus* was the higher shrub. The best yield and vigorous shrubs in Mulungu were obtained on *L. diversifolia* (K782 and 22192). Their CP were in the same range of 25% to 32% and the TIVMOD between 56% to 61% [9]. Digestibility *in vitro* observed on *C. calothyrsus* is better than the range of 24.0% to 47% observed by [9]. The best yield production at both two sites is given by *C. calothyrsus*. It is from Central America and Mexico [9]. This shrub adjusted well without depending much on the level of soil fertility and can be considered as an option in the livestock production systems in infertile soils like *F. macrophylla* [10]. According to the farmers, their choices correspond to the one retained during the agronomic trials as observed [11] on cassava-legumes intercropping system in Sud-Kivu DRC.

## Acknowledgements

Research was funded by the German federal ministry for Economic Cooperation and Development (BMZ) through the project “Project More chicken and pork in the pot, and money in the pocket Improving fodders for monogastric animals with low-income farmers Research project funded by BMZ Germany for Columbia, Nicaragua and DRC” executed by CIAT with the collaboration of INERA Mulungu, DRC. Special thanks are addressed to researcher’s seniors Dr. Peter M. and Prof. Maass B. L. for their scientific support and all other people who helped us to achieve these researches.

## Conflicts of Interest

The author declares no conflicts of interest regarding the publication of this paper.

## References

- [1] Cox, T.P. (2011) Farming in the Battlefield: The Meanings of War, Cattle, and Soil in South Kivu, Democratic Republic of the Congo. *Disasters*, **36**, 233-248. <https://doi.org/10.1111/j.1467-7717.2011.01257.x>
- [2] MINAGRIDRAL (2013) Ministère de l’agriculture et du développement rural, plan national d’investissement agricole PNIA 2013-2020 Ministère Agriculture et développement rural R. D. C, 2013.
- [3] Katunga, M.M.D. (2014) Evaluation des légumineuses fourragères dans un système d’élevage Editions universitaires européennes (08-07-2014). PhD Thesis, University of Lubumbashi, D.R.C. <http://www.editions-ue.com/>
- [4] Tiralla, N., Panferov, O. and Knol, A. (2011) Allometric Relationship of Frequently Used Shade Tree Species in Cacao Agroforestry Systems in Sulawesi, Indonesia Tropentag. Development on Margin Books of Abstracts University of Bonn, Bonn, 242. <http://www.tropentag.de>
- [5] Toledo, J.M. (1987) Manual para la Evaluación Agronómica Red Internacional de Evaluación de Pastos Tropicales. CIAT, Cali, Colombia 1982, 170 p.
- [6] Stür, W.W., Horne, P.M., Gabunada Jr., F.A., Phengsavanh, P. and Kerridge, P.C. (2002) Forage Options for Smallholder Crop-Animal Systems in Southeast Asia: Working with Farmers to Find Solutions. *Agricultural Systems*, **71**, 75-98. [https://doi.org/10.1016/S0308-521X\(01\)00037-3](https://doi.org/10.1016/S0308-521X(01)00037-3)
- [7] Andersson, M.S., Schultze-Kraft, R., Peters, M., Hincapie, B. and Lascano, C.E. (2006) Morphological, Agronomic and Fodder Quality Diversity of the *Flemingia macrophylla* 2006: World Collection. *Crops Research*, **96**, 387-406. <http://www.Sciencedirect.com> <https://doi.org/10.1016/j.fcr.2005.09.002>
- [8] Egli, A. (1988) Les arbres et arbustes fourragers au Rwanda Programme d’agroforesterie de l’ISAR 1982-1986 Butare Note Technique No. 2. ISAR, Rwanda, 67 p.
- [9] Cook, B., Pengelly, B., Brown, S., Donnelly, J., Eagles, D., Franco, A., Hanson, J., Mullen, B., Partridge, I., Michael, P. and Schultze-Kraft, R. (2005) CIAT, 2005: Tropical Fodders Index Fodders. <http://www.tropicalfodders.info>
- [10] Andersson, M.S., Lascano, C.E., Schultze-Kraft, R. and Peters, M. (2006) Fodder



Quality and Tanin Concentration and Composition of a Collection of the Tropical Shrub Legume *Flemingia macrophylla*. *Journal of the Science of Food and Agriculture*, **86**, 1023-1031. <https://doi.org/10.1002/jsfa.2433>

- [11] Pypers, P., Sanginga, J.M., Kasereka, B., Walangululu, M. and Van Lauwe, B. (2010) Increasing Productivity through Integrated Soil Fertility Management in Cassava-Legumes Intercropping System in the Highlands of Sud-Kivu, DR, Congo. *Field Crops Research*, **120**, 76-85. <http://www.elsevier.com/locate/fcr>  
<https://doi.org/10.1016/j.fcr.2010.09.004>