

CLAMShell: Speeding up Crowds for Low-latency Data Labeling

Daniel Haas[◇] Jiannan Wang^{♣*} Eugene Wu[♣] Michael J. Franklin[◇]
AMPLab, UC Berkeley[◇] Simon Fraser University[♣] Columbia University[♣]
{dhaas, franklin}@cs.berkeley.edu jnwang@cs.berkeley.edu ewu@cs.columbia.edu

ABSTRACT

Data labeling is a necessary but often slow process that impedes the development of interactive systems for modern data analysis. Despite rising demand for manual data labeling, there is a surprising lack of work addressing its high and unpredictable latency. In this paper, we introduce CLAMShell, a system that speeds up crowds in order to achieve consistently low-latency data labeling. We offer a taxonomy of the sources of labeling latency and study several large crowd-sourced labeling deployments to understand their empirical latency profiles. Driven by these insights, we comprehensively tackle each source of latency, both by developing novel techniques such as straggler mitigation and pool maintenance and by optimizing existing methods such as crowd retainer pools and active learning. We evaluate CLAMShell in simulation and on live workers on Amazon’s Mechanical Turk, demonstrating that our techniques can provide an order of magnitude speedup and variance reduction over existing crowdsourced labeling strategies.

1. INTRODUCTION

Modern data analysis is fundamentally centered around the human analyst and her ability to rapidly iterate between hypotheses and evidence. Towards this goal numerous projects have optimized individual data analysis components (e.g., data ingest [1, 43], data analytics [14, 39, 48, 57, 56], visualization [54, 53, 35, 27] and predictive models [17, 40, 26, 19]) as well as multi-stage workflows [21, 30] to reduce end-to-end latency of data analysis.

Unfortunately, these advances continue to be hindered by the need for synchronous human effort, often in the form of manual labeling. For example, human workers are frequently tasked to label training data (e.g., sentiment analysis, user preferences) for machine learning models. Similarly, many data cleaning systems [18, 52, 49, 28] rely on crowd workers to provide labels for entity resolution, value imputation, and other error mitigation algorithms. In fact, a recent

survey of software companies [37] found that these companies use crowd workers to complete hundreds of thousands of data cleaning tasks per day. Such heavy reliance on manually generated data inevitably limits the speed of analysis pipelines by the latency of their crowdsourcing steps.

All crowd-based data labeling systems seek to reduce cost and speed while maximizing quality. However, most research has focused only on the trade-off between quality and cost, routinely reporting task latencies on the order of minutes to hours to complete an average task [6, 31, 15]—clearly unacceptable for user-facing systems.

In this paper, we explicitly tackle the trade-off between cost and latency for crowd-sourced labeling tasks. Though there are a few existing works that explicitly aim at tackling latency, they are either tailored to specific tasks [36, 38, 50], targeted towards a single source of latency such as recruitment time [5, 8, 16], or focused on machine learning techniques (e.g., active learning) that ignore the practicalities of live crowdsourcing and may be counterproductive in terms of wall clock latency [41].

In addition, predictability of overall task latency is an important consideration that has not been carefully studied. Depending on the numerous external factors, the quantity, quality, and speed of available workers on crowd platforms such as Amazon’s Mechanical Turk (MTurk) [42] can fluctuate wildly [24, 23] and result in individual task latencies from seconds to even days. We argue that the variance of task latency must be within single-digit seconds before it can be usefully embedded in interactive user-facing applications such as Data Wrangler [28].

In this paper, we introduce CLAMShell, a system that speeds up crowds in order to achieve consistent, low-latency data labeling. Rather than focus on a single algorithm or step in the data labeling lifecycle, our goal is to develop a collection of pragmatic techniques to clamp down on latency and variance during all stages of labelling. To this end, we first perform an empirical study of the dominant sources of latency—per-task latency, batch-wise latency, and end-to-end overall latency. We then systematically address each major source through three novel techniques: *Straggler mitigation* uses redundant labelers to mitigate ‘straggler tasks’ at the end of batches, decreasing the variance of batch labeling time from minutes to fractions of seconds. *Pool maintenance* uses threshold-based eviction techniques to maintain a pool of fast, high-quality workers and decrease the average time to label each task. *Hybrid learning* combines active and passive learning to exploit crowd pool parallelism when there are more workers available than the active learning batch

*Research conducted while at the AMPLab, UC Berkeley

This work is licensed under the Creative Commons Attribution-NonCommercial-NoDerivatives 4.0 International License. To view a copy of this license, visit <http://creativecommons.org/licenses/by-nc-nd/4.0/>. For any use beyond those covered by this license, obtain permission by emailing info@vldb.org.

Proceedings of the VLDB Endowment, Vol. 9, No. 4
Copyright 2015 VLDB Endowment 2150-8097/15/12.

size, and dynamically favors passive learning on datasets where active learning performs poorly. Our evaluation of CLAMShell, a system that implements these techniques on live workers, demonstrates up to 8× speedups in label acquisition time and over 2 orders of magnitude reduction in variance compared to typical non-optimized deployments. A key benefit of our work is that all of these optimizations are compatible with standard quality control algorithms such as redundancy-based voting schemes and worker quality estimation algorithms.

2. STUDYING CROWD LATENCY

In this section, we categorize the primary sources of crowd-sourced microtask latency, describe existing work that addresses crowdsourcing latency, and outline our approach towards a comprehensive solution. We include a study of one crowd-labeling MTurk deployment that ran ~ 60,000 tasks to label medical publication abstracts. A full analysis of this and three other microtask deployments can be found in our technical report.

2.1 Sources of Latency

A multitude of factors can increase latency, from algorithm choice to worker and environmental factors. We find that categorizing the factors based on the granularity of work provides a clear decoupling of algorithmic contributions from systems concerns. Specifically, latency might arise from the speed of a single task, a fixed batch of tasks, or the full run of multiple batches (of possibly varying sizes).

Per-Task Latency We can view the latency of a single task as a linear sequence of three phases:

1. **Recruitment:** Workers do not immediately begin working on newly submitted tasks, and recruitment latency consists of the time until an interested crowd worker accepts a newly posted task. In the medical deployment, the min, median and standard deviation statistics were 5, 36, and 9 minutes, respectively.
2. **Qualification and Training:** Once workers accept a task for the first time, they are often presented with tutorials or qualification tasks before they are permitted to perform actual work.
3. **Work:** The amount of time a worker spends to complete a task can vary depending on the worker competency, the time of day, fatigue, and numerous other factors [33, 24]. Note that a single task may produce multiple labels if records are grouped into tasks (a common practice).

Per-Batch Latency We define the batch latency as the time for all tasks in a fixed-sized set to fully complete when sent to a crowd, which is dependent on the *latency distribution* of all available workers in addition to each worker’s individual variations.

For example, in the medical deployment, the median and standard deviation to complete a given HIT were 4 and 2 minutes, respectively, while the 90th percentiles are upwards of 1.1 and 3 *hours*, respectively. Although each HIT produces multiple labels, this extreme long-tail distribution is common-place on microtask platforms like MTurk, and driven by three sources:

1. **Stragglers:** The batch must block until the slowest task is completed – up to 3 orders of magnitude slower than the median.

2. **Mean Pool Latency (MPL):** The expected latency depends on the MPL, which varies from 1 to 2 minutes.
3. **Pool and Worker Variance:** The long-tail ultimately results in high variance within and between batches. The most and least consistent workers had standard deviations of 4 minutes and 2.7 hours, respectively.

These sources contribute to task response times that are, in practice, slow and extremely variable.

Full-Run Latency Rather than require crowd workers to label terabytes of data, machine learning is often used to infer labels once enough records have been labeled to train a high-quality model. Active learning can reduce the size of this training set, however training the model requires acquiring small batches of labels in a blocking fashion. This induces four latency sources:

1. **Decision Latency:** The time to pick the next batch of tasks (e.g., uncertainty sampling for active learning)
2. **Task Count:** The number of labeling tasks, which machine learning approaches seek to reduce.
3. **Batch Size:** The batch size affects both active learning convergence as well as the amount of parallelism within a batch.
4. **Pool Size:** The number of workers completing tasks controls the maximum parallelism possible, however is often dictated by operational constraints.

Active learning can drastically reduce the task count, but incurs increased decision latency and requires limited batch sizes to be effective. In contrast, passive learning can leverage the parallelism of all available workers, but might require many more tasks to train a model of equivalent accuracy. The choice ultimately depends on the labeling task, as we show empirically in Section 6.5.

2.2 Tackling Latency

Task Latency	Batch Latency	Full-Run Latency
Recruitment*	Stragglers	Decision Time
Qual & Training	Mean pool latency	Task Count*
Work*	Pool variance	Batch Size
		Pool Size

Table 1: Classification of sources of latency in data labeling.

Table 1 summarizes the sources of latency described in the previous section, and notes (*) sources that have been addressed in the literature. From the table, it is clear that there is ample opportunity to improve the state of crowd-sourced latency.

Existing Literature The primary work addresses recruitment time, a dominant source of task latency. Bigham et al. [8] frequently repost tasks (among other techniques) to improve the chances of workers accepting their tasks. However, if widely adopted, such techniques would likely exacerbate recruitment time. Gao et al. [16] algorithmically increase prices over time to encourage workers to accept tasks by a deadline. Bernstein et al. [5, 7] proposed the *retainer model*, which pre-recruits a pool of crowd workers (a retainer pool) and pays them to wait until tasks arrive. In settings where tasks are streaming or come in batches, this model can effectively eliminate recruitment time at a small cost. In our work, we build on top of the retainer model.

Work time has been reduced by re-designing task interfaces [36]. For example, Marcus et al. [38] study join interfaces for images, and design interface batching techniques that let workers complete up to 9 pair-wise comparisons

in the same time as a single pair-wise comparison task. However, these approaches are task specific, so CLAMShell views them as complementary to its general task optimization framework and does not explicitly address them.

Finally, algorithmic analysis and machine learning have been used to reduce task count. The former focus on efficient algorithms for specific operations (e.g., entity resolution [51], counting [36], or information retrieval [12, 44]). These focus on full-run latency, and could leverage CLAMShell’s per-task, per-batch, and machine learning techniques.

The latter trains models using data from completed tasks until the prediction quality exceeds a user-defined threshold, and then is used to predict the remaining responses. In this setting, active learning [11] is a commonly used method [41, 18]. Given unlabeled data, active learning iteratively uses a point selection algorithm to pick a small set of informative points to acquire labels for, and incorporates the new labels into its model. The algorithm continues until the model accuracy (e.g., cross-validation) converges. Active learning is indispensable when there are more items than can be practically labeled, and can be used in conjunction with algorithmic approaches that rely on the labels [12, 51].

Despite reducing the task count, active learning may counter-intuitively *increase* the overall latency by constraining the parallelism due to its batch size limitations. Its convergence properties have only been proved when the batch size is 1, and larger batch sizes (e.g., 10) have only been tested empirically. When the number of workers significantly exceeds the batch size, active learning can be much slower than labeling as many random tasks in parallel as possible and using a passive learner.

Towards a Comprehensive Solution The core problem is a trade-off between cost, accuracy and latency: a user wants to label a set of items accurately at high speed and low cost. This work focuses especially on reducing latency by sacrificing cost. To this end, we systematically tackle the primary sources of latency (Table 1) in a general purpose labeling system:

1. **Task Latency:** CLAMShell addresses task latency by adopting retainer pools to reduce recruitment costs. CLAMShell automatically maintains the pool size at p as workers abandon the pool, and provides guidance about how the cost and latency will be affected by changing p . In addition, CLAMShell trains and verifies worker qualifications as part of recruitment, ensuring that every worker in the pool is immediately available to provide useful work when new tasks arrive.
2. **Batch Latency:** *Straggler mitigation* uses worker redundancy on slow tasks to compensate for long-tail latencies. *Pool maintenance* selectively replaces pool workers to progressively shift and tighten the latency distribution towards faster responses. Together, they eliminate straggler effects, reduce mean pool latencies over time, and significantly reduce batch variance.
3. **Full-Run Latency:** CLAMShell uses a hybrid strategy that allocates subsets of the worker pool to active and passive learning. In addition, CLAMShell pipelines the expensive model retraining and uncertainty sampling steps with crowd labeling to eliminate decision latency at the cost of slightly stale model results.

Note that CLAMShell does not explicitly address *work time*, nor *pool size*: work time is often specific to the task interface, which we view as an orthogonal interface optimiza-

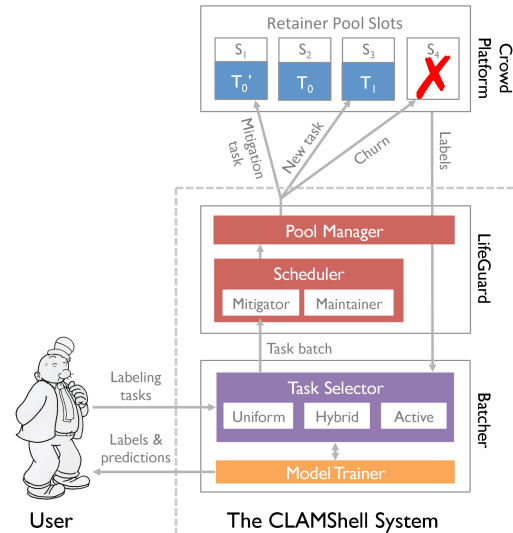


Figure 1: CLAMShell architecture diagram.

tion problem, and pool size is a parameter to *The Crowd Labeling Problem* and typically set by operational constraints. Instead, the following text focuses on the other sources of latency listed in Table 1.

3. THE CLAMSHHELL SYSTEM

In this section, we present an overview of CLAMShell, a system for fast label acquisition.

The CLAMShell architecture is illustrated in Figure 1. The user submits a set or stream of labeling tasks to the *Batcher* and uses the *Task selector* (Section 5.1) to pick B incomplete tasks to process in the current iteration. The tasks are selected via uncertainty sampling using the most recently trained model to pick tasks that benefit active learning, and random sampling to pick tasks for passive learning. The resulting batch is sent to *LifeGuard*, which schedules tasks within the batch to be sent to the *Crowd Platform*. This level of indirection is necessary when the batch size exceeds the size of the retainer pool, and so the *Mitigator* can control redundancy when there are slow tasks.

The *Crowd Platform* holds a set of slots ($S_1 \dots S_4$) in the current retainer pool. Each slot corresponds to a persistent *retainer task* that a crowd worker has accepted, and may be empty (e.g., S_4) or contain a task (e.g., T_0). The *Scheduler* immediately sends new tasks to available slots (e.g., S_3). If all tasks have been sent, then the *Mitigator* sends duplicate (mitigation) tasks for slow, incomplete tasks (e.g., S_1). If a slot is consistently performing slowly, the *Maintainer* may recruit and train a worker for a replacement slot in the background, then evict the slow slot (X in S_4).

Completed labels are sent directly to the *Batcher*, which retrains the machine learning model. The *Task Selector* uses different sampling algorithms such as uniform sampling, active learning-based uncertainty sampling, or our hybrid sampler, to pick the next batch of tasks. At all times, the user can access the completed labels and query the currently trained model for new predictions. The following example illustrates the use of CLAMShell in practice.

EXAMPLE 1. *Imagine a news outlet is covering a live political debate, and wants to monitor and visualize the public’s reaction to candidates’ comments on hot-button issues*

by analyzing the sentiment of related tweets. Because automated sentiment analysis techniques on tweets are often inadequate [2], the company asks a crowd to label tweets as “positive”, “negative”, or “neutral”. If the system suffered from high crowd latency, the sentiment visualization would be unable to keep up with the changes in public opinion as the debate proceeded, rendering the tool unhelpful.

CLAMShell can be used to address this issue with both per-batch and full-run optimizations. The per-batch optimizations, including straggler mitigation and pool maintenance techniques, are designed to reduce the time that is required to label a batch of tasks using crowds, e.g., asking for crowd labels for a batch of ten tweets. Once the company has enough labeled data, they hope to switch to an automated process in the long term. The full-run optimizations, including hybrid learning, are designed to reduce the number of iterations that a learning model needs to converge, i.e., the total number of batches that we need to ask crowds to label.

4. PER-BATCH LATENCY OPTIMIZATION

Per-batch optimizations aim to reduce the latency for a single batch of labeling tasks — the *Batcher* sends a batch of tasks to a pool of workers, and waits for the batch of work to complete. In this model, the dominant costs are due to the variability of worker latencies within the pool, as well as the variability within the tasks that a single worker performs.

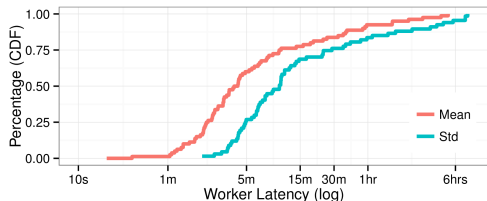


Figure 2: Distribution of worker latencies.

For example, Figure 2 depicts per-worker means and standard deviations of latency from the medical deployment as CDFs. We can see that average worker speeds are spread out from tens of seconds to hours. In addition, even workers who are very fast on average (~ 1 minute) can take as long as an hour or more to complete some tasks. This variation is bad for per-batch latency because the batch must block until all of its tasks are complete.

So in order to reduce per-batch latency, a system must reduce both the mean of the latency distribution (workers who are slow on average) and its variance (workers who are inconsistent). This section describes the mechanisms for each of these approaches respectively, along with mathematical models and simulation results. Section 6 evaluates these strategies on a live deployment on MTurk.

Throughout the following sections, we reference experiments run in simulation. The simulator is described in Section 6.1, but due to space constraints detailed analysis of the results can be found only in our technical report.

4.1 Straggler Mitigation: Reducing Variance

In cluster computing frameworks such as Hadoop [22] or Spark [56] where the presence of straggler tasks in a stage (e.g., reduce stage of MapReduce [13]) can delay downstream computation, replicating the slow tasks [4, 13, 3, 55] via speculative execution or task cloning [4] is an effective counter-measure.

We take a similar replication-based approach to human stragglers in our crowd pool. We call a worker *active* if she is currently working on a task, and *available* otherwise. Similarly, a task is either *active*, *complete*, or *unassigned*. By default, CLAMShell routes only unassigned tasks to available workers until all tasks are complete. Once all tasks are active or complete, available workers must wait until the next batch to receive a task. With straggler mitigation, in contrast, such workers are immediately assigned active tasks, creating duplicate assignments of those tasks. CLAMShell returns the first completed assignment of a task to the user and immediately reassigns all other workers still working on that task to a new unassigned or active task (though it pays them for their partial work on the old task regardless). The effect of straggler mitigation is that when an inconsistent worker takes a long time to complete a task, the system hides that latency by sending the task to other, faster workers. As a result, the fastest workers complete the majority of the tasks and earn money commensurate with their speed. For example, in the medical deployment, the fastest worker ($\mu = 28.5$ seconds) could complete, on average, $8\times$ as many tasks as the median worker ($\mu = 4$ minutes).

Simulation. A natural question arises when performing straggler mitigation: which task should be assigned to an available worker? We ran simulation experiments testing several straggler routing algorithms, including routing to the longest-running active task, to a random task, to the task with fewest active workers, or to the task known by an oracle to complete the slowest.

To our surprise, the selection algorithm didn’t affect end-to-end latency, and random performed as fast as the oracle solution because the fast workers complete almost all of the tasks in the batch.

A second question is: at what batch sizes is straggler mitigation effective? We study this in simulation by varying the pool size to batch size ratio $R = \frac{N_{pool}}{N_{batch}}$ using the random selection algorithm and different pool sizes. The benefit of straggler mitigation comes from its ability to remove the overhead of slow workers at the end of a batch of tasks. When R is higher, each batch gains the full benefit of straggler mitigation and completes at the speed of the fastest workers, however the number of tasks completed in each batch is lower. Conversely, with a small ratio, workers spend most of their time working on unassigned tasks, and the impact of straggler mitigation is lessened.

Impact on Crowdsourcing Systems. Straggler mitigation is a general technique that does not affect the programming interface of the system it is applied to. It can therefore be used easily in conjunction with any existing crowdsourcing system that processes batches of microtasks. One important benefit of hiding the variance in worker latencies is that task completion times become much more predictable. This characteristic is vital to the development of declarative crowd systems such as crowdsourced query processors, because optimizers need to be able to accurately estimate the cost of executing a declarative crowd workflow.

4.2 Pool Maintenance: Better Mean Latency

Straggler mitigation reduces the variance of task latencies, but if many workers in the labeling pool are slow on average, variance reduction will be ineffective at reducing per-batch latency. To improve the average speed of the pool over time,

CLAMShell uses *pool maintenance*, a technique that continuously replaces slow workers in order to converge to a pool of mostly fast workers. Because a fast pool will label each task more quickly, pool maintenance reduces per-batch labeling latency over time.

Our maintenance algorithm takes as input a latency threshold PM_ℓ , and continuously releases workers slower than the threshold asynchronously as labeling proceeds. To do so, it computes an empirical latency for each pool worker based on the worker’s completed tasks and flags the worker as a candidate for removal if his latency is significantly above PM_ℓ (determined using a one-sided significance test).

Instead of removing a slower worker before recruiting a replacement, CLAMShell continuously recruits and trains workers in the background in order to maintain a reserve of new workers. Although this might seem costly, pipelining recruitment means that pool maintenance can proceed without blocking on worker recruitment, and we find empirically that the latency savings of pool maintenance translate to cost savings that overwhelm the cost of background recruitment (Section 6.2). The removed worker is paid for their active job (if any), and informed that there are no more tasks available for the experimental run. They are not blacklisted, so that future experiments are not biased.

Pool speed convergence. The following model demonstrates the mean latency to which a maintained pool will eventually converge. Assume a population of workers with mean latencies μ_i following some global distribution \mathcal{W} having mean Γ , and sample an initial pool $\mathcal{P}_0 \subset \mathcal{W}$ uniformly at random from \mathcal{W} . Let PM_ℓ be a latency threshold splitting the distribution \mathcal{W} into two parts, with probability densities q and $1 - q$ above and below PM_ℓ respectively. Further, let μ_f be the mean latency among fast workers having $\mu_i < PM_\ell$, and let μ_s be the mean latency among slow workers having $\mu_i > PM_\ell$.

Then our initial pool has a mean latency $\mathbb{E}[\mu_i] = (1 - q)\mu_f + q\mu_s$. If at each maintenance step, we remove all slow workers having $\mu_i > PM_\ell$ and replace them with workers drawn randomly from \mathcal{W} , and letting \mathcal{P}_i be the pool after i steps, we see that \mathcal{P}_1 has mean latency $\mathbb{E}[\mu_i] = (1 - q)\mu_f + q(1 - q)\mu_f + q^2\mu_s$, and in general \mathcal{P}_n has mean latency:

$$\begin{aligned} \mathbb{E}[\mu_i] &= \left(\sum_{i=0}^n q^i\right)(1 - q)\mu_f + q^{n+1}\mu_s \\ &= (1 - q^{n+1})\mu_f + q^{n+1}\mu_s. \end{aligned}$$

We observe that $\lim_{n \rightarrow \infty} \mathbb{E}[\mu_i] = \mu_f$, that is, the pool converges to the mean latency of all workers below PM_ℓ . This implies that it is desirable to set PM_ℓ as low as possible: in practice, setting the threshold too low leads to thrashing, as we show in section 6.2.

Simulation. We simulated how pool maintenance affects batch latency with respect to the task to pool size ratio R using a latency threshold PM_ℓ of one standard deviation below the mean. After each batch, we replace all workers slower than PM_ℓ with new samples from the worker distribution. With pool maintenance, the batch latency falls quickly, nearly halving in just 15 to 20 batches. When there are many more tasks than pool workers, the effect becomes less pronounced, because there are enough tasks that slow workers who only complete a small fraction of tasks do not impact the per-batch latency.

To better understand how the distribution of mean worker

latency is changing over time, we simulate the mean pool latency (MPL) of the worker pool over time with and without maintenance, and compare the MPL to the mathematical model’s predictions. With maintenance, the pool’s MPL converges quickly to the model’s predicted asymptote, following the model closely across pool-size to task ratios R .

Latency Threshold. The pool maintenance latency threshold determines which workers are slow and should be removed from the pool. To pick a good threshold, we can observe the empirical distribution of all workers ever seen, and estimate the threshold as k standard deviations below the mean. The goal is to find a threshold low enough to decrease average pool latency by releasing slow workers, but high enough to avoid discarding the fastest workers from the pool. In Section 6.2, we vary the threshold and find that it has significant impact on the benefits of pool maintenance.

Extensions. As described, pool maintenance is focused only on reducing the mean latency of the pool. However, it can be easily extended to optimize for other criteria by choosing an objective function other than worker speed. For example, we could maintain a pool using quality (estimated using, e.g., inter-worker agreement [9]) to converge to a high-quality pool, use a weighted average to trade off quality and speed, or minimize another metric such as worker variance. Ramesh et al. [46] take a similar approach to identifying high-quality workers, though they use an oracle for accuracy and evaluate their technique only in simulation.

4.3 Combing Per-Batch Techniques

Interference Effects. Both straggler mitigation and pool maintenance deal with tail latencies — maintenance detects and removes workers whose average speeds are outliers, and straggler mitigation hides individual workers’ outlier tasks. From our initial live experiments, we were surprised to find that naively combining the two techniques together resulted in zero or even negative gains as compared to straggler mitigation alone. For example, the number of workers replaced in each batch was reduced from ~ 30 to less than 5 despite similar worker distributions.

The reason is that straggler mitigation terminates slower tasks, artificially skewing every worker’s completion times towards the latency of the fastest workers. This makes directly measuring true worker latency infeasible. In response, we developed a simple model called **TermEst** to estimate the average latencies of terminated tasks based on the number of times a worker’s task is terminated.

We assume the worker pool is represented by two worker types — slow workers w_s and a fast workers w_f that each uses a true latency of $l_{s,j}$ and $l_{f,j}$ to complete task t_j . Our goal is to estimate the latency of w_s ’ terminated tasks. Let w_s start N tasks $T_{all} = \{t_1, \dots, t_N\}$, where $T_t \subseteq T_{all}$ are terminated, and $T_c = T_{all} - T_t$ are completed. Let $l_{k,T} = \frac{1}{N} \sum_{t_i \in T} l_{k,i}$ be the average latency for w_k to complete a random task in T , and let l_k be w_k ’s true mean latency. Since w_f can start working on t_j at any time after w_s with uniform probability, the probability that w_f starts early enough to cause w_s to terminate is $\frac{l_{s,j} - l_{f,j}}{l_{s,j}}$. Thus, w_s is expected to be terminated N_t times over N tasks:

$$\sum_{t_i \in T_t} \frac{l_{s,i} - l_{f,i}}{l_{s,i}} \approx \frac{l_{s,T_t} - l_f}{l_{s,T_t}} \times N = N_t$$

Rearranging the terms, we can estimate l_{s,T_t} , where $N_c =$

$N - N_t$:

$$l_{s,T_t} = \frac{l_f \times N}{N_c}$$

We then add a smoothing term *alpha* to N in order to compensate for the lack of latency evidence when N is small and avoid divide-by-zero errors when all of a worker’s tasks are terminated ($N = T$). In practice, we estimate l_f as the empirical mean of the workers that caused any of w_s ’ past jobs to terminate:

$$l_{s,T_t} = \frac{l_f(N + \alpha)}{N_c + \alpha}$$

Finally, to estimate the overall latency of w_s by taking the the weighted average of l_{s,T_t} and the empirical mean latency of the tasks w_s is able to complete, l_{s,T_c} :

$$l_s = \frac{N_t}{N} \times l_{s,T_t} + \frac{N_c}{N} \times l_{s,T_c}$$

Note that our formulation is equivalent to modifying the latency threshold on a *per worker* basis. Thus, while changing the global latency threshold is important for setting a worker replacement rate, this adjustment replaces workers who are frequently terminated.

Working with Quality Control. One potential drawback of this work is that by selecting workers based only on speed, we might be rewarding spammers or other fast but inaccurate workers. Our empirical data actually show that faster workers are no more likely to be inaccurate than slow workers (analysis omitted for space), but it is worth mentioning that traditional quality control techniques are entirely complementary to these per-batch techniques. For example, CLAMShell implements redundancy-based quality control algorithms such as [25] or [29] that use votes from multiple workers to better estimate the true answer by simply acquiring more labels using straggler mitigation and pool maintenance. This might appear confusing, as straggler mitigation also acquires extra labels, but there is a key difference: straggler mitigation *asks* for extra labels but doesn’t wait for them, whereas quality control *requires* extra labels and waits for all of them.

5. FULL-RUN LATENCY OPTIMIZATION

In order to eliminate the need to manually label all points in a potentially large set, CLAMShell acquires labels for only as many points as needed to train a predictive model of sufficient quality, then uses that model to impute labels for all remaining points. As described in Section 2, there are many factors that influence the latency of the labeling process. Relying on learning greatly decreases the *task count* necessary to label the entire dataset, but has implications for the *decision latency* and *batch size* involved. In particular, CLAMShell uses uncertainty sampling to reduce the task count even further, but trades this improvement for increased decision latency (the learner must choose which points to label next) and decreased batch size (active learning is inherently iterative and cannot label as many points in parallel).

In this section, we describe how CLAMShell ameliorates the drawbacks of active learning for low-latency labeling. We introduce *hybrid learning*, a novel technique which combines active and passive learning to maximize pool parallelism and hide the inherent limits of active learning batch size. We also describe how CLAMShell leverages existing

techniques to set an effective batch size for active learning and uses asynchronous model retraining to hide active learning’s decision latency.

5.1 Hybrid learning

Active learning uses the current trained model to decide which points to label in the point selection phase, reducing the number of points needing labels in order to train a high-quality model. In practice, however, there are two major challenges to active learning at low latency. First, at each iteration, active learning has a limited batch size—setting the batch size too high can cause the model to converge even more slowly than passive learning [47]. This limits the wall-clock speed at which active learning can proceed. Second, when labeling work is challenging, it will be hard to train a good model. As a result, the current trained model may misguide the point selection phase, and active learning may perform poorly, perhaps even worse than passive learning. On the other hand, passive learning that trains a model using a randomly sampled data points can proceed as fast as the crowd can label, but it will waste human effort for easy labeling work.

To address these issues, we propose *hybrid learning* in CLAMShell, with the basic idea of maintaining the best traits of both passive and active learning, allowing for fast model convergence on both easy and hard data labeling work. Hybrid learning simultaneously acquires labels using the active selection strategy and random sampling, maximizing crowd worker parallelism and compensating for datasets where active learning alone would perform poorly. As a result, label acquisition can proceed at high speed in spite of a low active learning batch size.

Point Selection. Once a batch size has been selected for active learning (Section 5.2, below), hybrid learning attempts to maximize crowd worker parallelism by ensuring that each worker in the pool has at least one point to label. That is, given a batch size k and a pool size p , hybrid learning uses the active selection criterion to choose k points for labeling, then randomly selects $\max(0, p - k)$ points for passive labeling. Because CLAMShell caches all previously labeled points, if the points chosen for active or passive labeling overlap, their labels are read from the cache and additional points are selected for labeling.

Model Retraining. Once a new batch of points has been labeled, hybrid learning retrains a model on all previously observed labels. These points come from two sampling distributions: uncertain sampling (active learning) and random sampling (passive learning). Currently, CLAMShell retrains the model on the union of these points without distinguishing their difference, though it does weight points based on the active-to-passive ratio (i.e., $\frac{k}{p}$). If users provide hints to CLAMShell about how hard their labeling work is (e.g., very difficult), CLAMShell can adjust these weights accordingly. We leave the exploration of optimal re-weighting schemes for future work.

5.2 Active learning batch size

Because the speed of active learning is constrained by the size of its batches, setting a good batch size is important for fast convergence. Too small, and training will be slow because it will take a long time to label all the points. Too large, and training will be slow because each batch contains

less useful points, slowing down convergence to a good model (or even converging to a bad one!). The literature provides no guidance on an appropriate batch size for batch-mode active learning, assuming that the batch size is chosen by the user in advance. Chakraborty et. al [10] offer an active learning technique that dynamically sets the batch size, but it is not generic across learners and requires knowledge of the labeling time for each instance. We experimented extensively with the active learning batch size, and found that once batch size was within a reasonable range (10-40), there was no significant correlation between batch size and convergence rates on any single dataset, let alone across datasets.

As a result, we rely on empirical results from our hybrid learning experiments (Section 6.5) to set an active learning batch size that works well with our hybrid strategy. Those experiments show that the fraction of the pool $r = \frac{k}{p}$ allocated to active learning has a significant impact on the convergence of the learner, and that $r = 0.5$ is a reasonable value for multiple datasets. In our end-to-end experiments, we set $k = 0.5p$ accordingly.

5.3 Active learning decision latency

The time taken by the active learner to retrain a model and select a new batch of points after the previous batch has been labeled has a significant impact on full-run latency, because the labeling process blocks until the learner is ready with the next batch. To mitigate this latency (which is not an issue for passive learning), CLAMShell uses two known techniques.

First, rather than consider all unlabeled points for selection in the next batch, we consider only a uniform random sample of the points. This has been shown to have little impact on active learning convergence, and offers significant performance improvements: the point selection time is linear in the sample size, not the size of the entire unlabeled dataset, which might include millions of examples.

Second, rather than performing retraining and selection synchronously at the end of each batch, CLAMShell continually retrains models asynchronously on the latest available points. A new batch of points is selected based on each new model, so at any point in time there is an available model and an available selection of points for the next batch. When each batch of points completes the labeling process, the next batch is selected based on the most recently computed model. This trades off decision latency for staleness of points to be selected, and empirically we find that it does not significantly impact model convergence.

5.4 Putting it all together

CLAMShell is powered by three techniques: Straggler Mitigation (*straggler*), Retainer Pool Maintenance (*pool*), and Hybrid Learning (*hybrid*). Table 2 summarizes their impact on system performance across four axes: (1) Can they improve the mean latency of labeling? (2) Can they mitigate the variance of individual workers’ labeling latency? (3) Do they require additional cost to use? (4) Are they general or restricted to a certain labeling setting?

6. EVALUATION

In this section, we evaluate CLAMShell both in simulation and on live crowd workers on MTurk in order to show that it enables data labeling to proceed at interactive speeds. We

CLAMShell Techniques	Latency		Cost	General
	Mean	Variance		
straggler	Yes	Yes	Increase	Yes
pool	Yes	Yes	No Change	Yes
hybrid	Yes	No	Increase	AL

Table 2: CLAMShell techniques (AL: Active Learning).

Param	Description
PM_ℓ	Latency threshold for pool maintenance
SM	Straggler mitigation: on (SM), off ($NoSM$).
N_p	Number of workers in the retainer pool.
N_g	Task size: # records grouped a HIT. Small (1), Medium (5), Large (10 records)
R	Pool-batch ratio.
Alg	Learning algorithm: active (AL), passive (PL), hybrid learning (HL), or none (NL)

Table 3: Experimental Parameters

first evaluate each technique in isolation, then provide end-to-end experiments demonstrating the total time it takes to label unlabeled datasets. Table 3 summarizes important parameters varied in the experiments.

6.1 Experimental Setup

Simulator. The simulated experiments described in the previous text and the following evaluation are run on a python simulator that models a retainer-pool crowd data labeler and implements uncertainty sampling on top of scikit-learn’s model training [45]. To simulate crowd workers, we use traces from the medical deployment described in Section 2.1. From each trace, we measure each worker’s mean labeling latency μ_i , variance in labeling latency σ_i^2 , and mean accuracy λ_i . We then generate a worker’s latency on an assigned labeling task by drawing a sample i.i.d from $\mathcal{N}(\mu_i, \sigma_i^2)$, and generate the label itself by returning the correct label with probability λ_i and the incorrect label with probability $1 - \lambda_i$. Using these worker pools, the simulator can model recruitment (adding random workers to the pool), pool maintenance (releasing workers with high observed μ_i from the pool), straggler mitigation (assigning multiple simulated workers to the same task and returning the minimum of the sampled latencies), and active learning (using simulated workers to label batches of points and measuring the latency of the whole batch).

Live Experiments. The live experiments discussed below run on a custom implementation of the retainer model for MTurk. Recruitment occurs by repeatedly re-posting recruitment tasks every 3 minutes to MTurk until the desired number of workers have joined the pool. Workers are paid \$.05 / minute to wait for available work once they join a pool, and \$.02 / record to perform the work once it becomes available. MTurk tasks require a minimum qualification of 85% worker approval to join a pool. Experiments in these pools were run at multiple times of day on both weekdays and weekends. In contrast with prior work, we found that results were remarkably consistent across these parameters when using our latency mitigation techniques. This may be the result of our relatively strict qualification requirement, or may reflect more systemic changes in the MTurk marketplace. Following the retainer pool model, we assume recruitment time is amortized across batches and measure latency from the moment the first task is sent to the pool, rather than from the beginning of the recruitment process. Over-

all, we collected timing results for nearly 250,000 individual task assignments over the span of several weeks.

Datasets. The active learning tasks run in this evaluation are all classification tasks, based on publicly available datasets. The MNIST dataset [34] contains 70,000 black and white images of handwritten digits, and the multi-class classification task is to detect which digit is in each image. We used raw pixel values as features, leading to 784 features per image, and use entropy as our uncertainty metric when performing active learning. The CIFAR-10 dataset [32] contains 60,000 color images of various objects, and the classification task is to identify the category of the primary object in each image. In order to make the learning task simpler, we limited the topic categories to two: “Birds” and “Airplanes”. We used raw pixel values as features, generating 3072 features per image. In addition to the real datasets, which have concrete labeling tasks that we can send to human workers, we also generate datasets of varying difficulty to illustrate the relationship between problem hardness and the performance of our techniques. These datasets are generated with the scikit-learn data generator, which builds classification problems following the algorithm from [20].

6.2 Pool Maintenance

In this section, we evaluate the effects of pool maintenance on batch time. The experiments execute 500 tasks that label MNIST digit images. We compare tasks of varying size (Small, Medium, Large) that use $N_g = 1, 5,$ or 10 MNIST images, respectively. The latency threshold is set to $PM_\ell = 8$ and $PM_\ell = \infty$ (no maintenance).

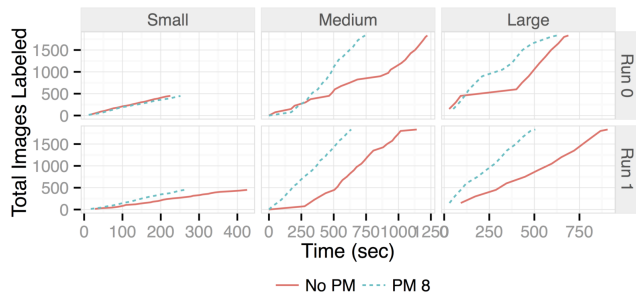


Figure 3: # points labeled over time in 2 typical runs.

Figure 3 is an overview of the total number of labeled points ($N_g \times N_{tasks}$) over time for each configuration. The slope of each curve describes the speed of task completion, where a flat curve denotes stragglers that take a very long time to complete a task. We find that task completion for smaller tasks is uniformly fast, so pool maintenance provides little additional benefit; however, larger tasks are affected by outliers, and maintenance’s ability to cull slow workers helps reduce the presence of very long tasks.

Overall. Ultimately, pool maintenance does not improve end-to-end latency for small tasks significantly, but is able to reduce the latency for medium and large tasks by $1.3\times$ and $1.8\times$ on average, respectively (Figure 4). Interestingly, despite its added cost to recruit workers concurrently with labeling tasks, maintenance is able to reduce the overall cost of the medium and large tasks by 7 – 16%. This is due to finishing the experiment faster and saving the cost of paying workers to stay in the retainer pool. Changing the rate paid to waiting workers may increase or reduce this effect.

Latency Distribution. To better understand how pool

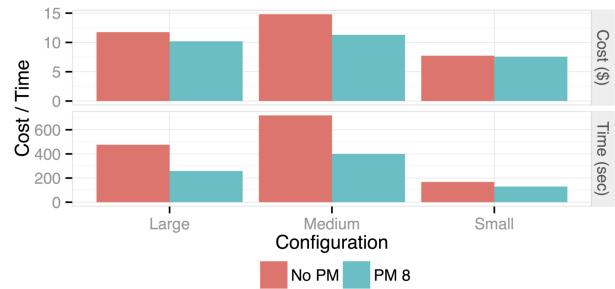


Figure 4: Summary of end-to-end cost and latency experiments with and without pool maintenance.



Figure 5: Comparison between age of the worker in the pool when starting a given task and the time to complete the task. Tasks where the latency per labeled point is greater than 8 seconds are colored in blue.

maintenance effects the composition of the worker pool, Figure 5 plots task completion speeds against the age of the worker when starting a given task. We define a worker’s age with respect to task t_i as the number of tasks the user has already completed in the experimental run. The y-axis shows the latency to acquire a single label, computed as $\frac{\text{task latency}}{N_g}$; each column shows all tasks across the runs for a given task size; and the top and bottom rows are with maintenance turned on (PM_8) and off (PM_∞). In addition, the points are categorized as fast (< 4 sec per label), medium (5 – 7 sec), or slow (≥ 8 sec). Although workers that are new to the worker pool naturally exhibit high task latency variability, maintenance is able to purge the slow workers over time. For every task size, the slow and even medium latency tasks are nearly all removed once workers have remained in the pool for more than 4 minutes. In contrast, the lack of pool maintenance allows slow and highly variable workers continue working on tasks, so that slow tasks are seen throughout the entire experiment.

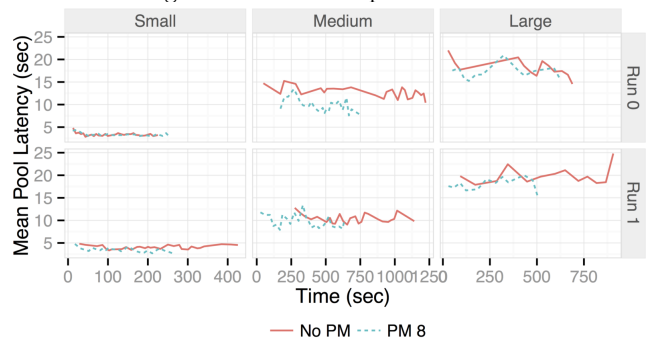


Figure 6: Mean pool latency over time.

Mean Pool Latency. Figure 6 provides a different view on pool maintenance’s effects on the worker pool – it measures

the *mean pool latency (MPL)* for each batch of tasks sent to the pool throughout the experiment. MPL is computed as the average latency of all completed tasks in the pool. Each subplot compares the MPL with and without maintenance for a given experimental run and task size. While the average of each pair of curves is similar, pool maintenance shows significantly less variance across the batches because it effectively removes the long tail of the latency distribution. The variation in the pool maintenance curve is simply due to the variation of the newly recruited workers.

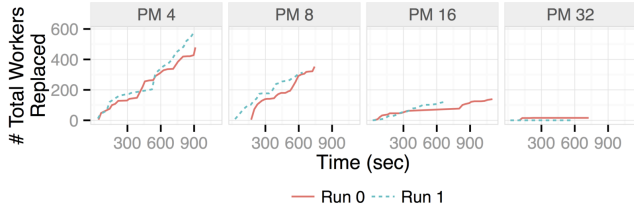


Figure 7: The number of workers replaced over time for varying maintenance latency thresholds.

Latency Threshold. Our analysis of MPL shows that pool maintenance is able to remove outliers from the worker pool. However, the reduction in MPL is not as fast as predicted by the model or simulations presented in Section 4.2. This is expected, as workers may not maintain consistent speed over time, and our empirical estimates of worker’s speed may be inaccurate. Another potential issue may be that our latency threshold is poorly tuned, thus in our final experiment (Figures 7 and 8), we study whether varying the latency threshold between 2 and 32 seconds can affect the median task latency in addition to the variance. Figure 7 demonstrates that decreasing the threshold causes more workers to be replaced during a run, as expected. Figure 8 shows the latency percentiles at different worker-age slices (e.g., < 5 tasks) in the experiment. We find that varying the threshold affects both the median and higher percentiles, with a more pronounced effect on the extrema task latencies. For this workload, the optimal threshold is PM_8 , which can reduce the straggler latencies by nearly $2\times$. However, further reducing the threshold to 4 or 2 seconds goes beyond the point where even fast workers are able to complete tasks, and effectively replaces all workers with the mean of the underlying MTurk distribution. The curves reduce across work slices due to the effects of pool maintenance, consistent with the analysis in Figure 5.

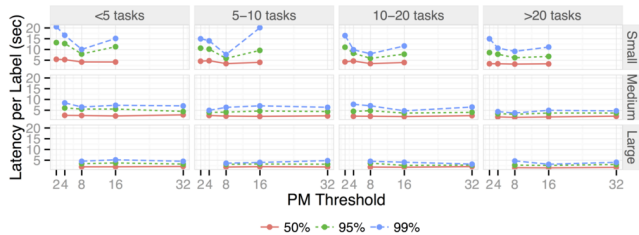


Figure 8: 50^{th} , 95^{th} , and 99^{th} percentiles of task latency as maintenance latency threshold varies. Each facet is a different amount of time into the experiment.

6.3 Straggler Mitigation

In this section, we evaluate the performance of straggler mitigation along two key metrics: task latency and task variance. An important parameter of straggler mitigation is R , the ratio of workers in the pool to tasks in a batch (Table 3),

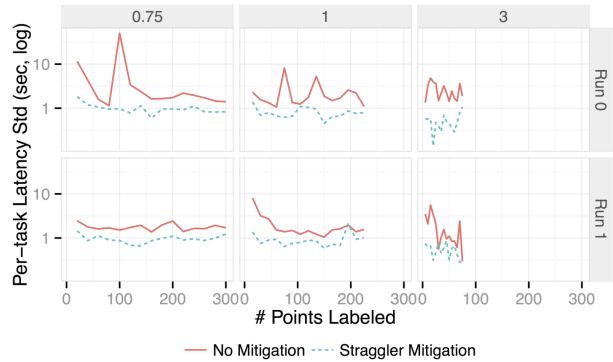


Figure 9: Straggler mitigation dramatically reduces the standard deviation of per-task latency across batches.

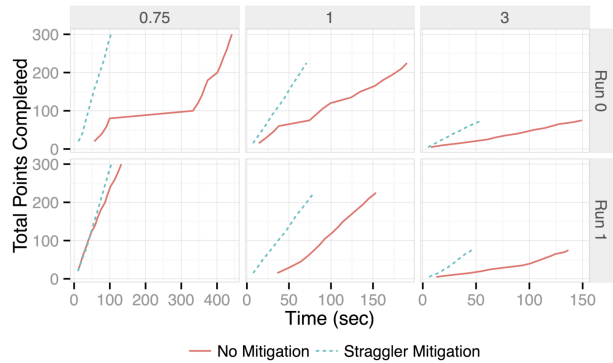


Figure 10: Points labeled over time with straggler mitigation in 2 typical runs.

because it controls how many workers are assigned on average to eliminate stragglers. Set too low, and stragglers will occur unfettered. Set too high, and money and effort will be wasted unnecessarily. In these experiments, we set task size to $N_g = 5$, the pool size to $N_p = 15$, and give workers CIFAR-10 tasks.

Variance. One of the key properties of straggler mitigation is its ability to reduce the variance of individual task latencies. Figure 9 plots the standard deviation of the latencies of task completion times for each batch. Straggler mitigation consistently decreases the standard deviation by 5 to $10\times$ (a decrease in variance of up to $100\times!$), very important when trying to predict the run-time of a batch consistently. One interesting observation is the jaggedness of the $R = 3$ plots. This is likely because with 3 times as many workers as tasks, workers spend much more time waiting, and are slow to respond when work becomes available because they are involved in other work.

Latency. Because straggler mitigation enables task batches to finish without waiting for high-latency straggler task assignments to complete, it significantly reduces the latency of each batch, up to $5\times$ on some runs (Figure 10). Increasing R can increase those gains, but comes at an additional cost, as it pays more workers to complete each task. Although intuitively we might expect straggler mitigation to become more and more effective as R increases, there are practical limitations that prevent this effect. With high R , even fast workers are often terminated before finishing their tasks because many workers are working on every task at once. In addition to the added latency of this termination

(workers must click a dialog to finish the old task and be presented with a new one, which takes seconds), this creates a frustrating environment for workers, who feel as though they aren't being allowed to work. As a result, keeping R between 0.75 and 1 is attractive, as it limits cost and still shows impressive speedups.

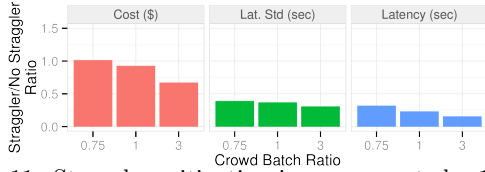


Figure 11: Straggler mitigation increases costs by 1 to 2 \times , improves latency by 2.5 – 5 \times , and variance by 4 – 14 \times .

6.4 Combining Per-Batch Techniques

Figure 12 summarizes the effects of combining both straggler mitigation and pool maintenance when labeling CIFAR-10 tasks. We see that the two techniques can be complementary, but in some experiments we observe destructive interference between straggler mitigation and pool maintenance. We believe this is a result of fluctuating conditions on the underlying crowd platform across experiments: sometimes the initial pool selection is high-quality, rendering pool maintenance ineffective, and other times very slow workers join the pool and maintenance is invaluable. We note that in all cases, combining per-batch techniques still results in a significant speedup over not using either technique, leading to a reduction in latency of up to 6 \times , and reduction in standard deviation of up to 15 \times .

Detailed View. Figure 13 shows the latency of every task for a single experimental run with every combination of straggler mitigation and pool maintenance. Each line segment depicts the start and end time of a specific task. Red tasks are successfully completed, while blue tasks are terminated due to the worker leaving the pool or because another worker finished the task in less time. Red and blue dots denote the start and end of a batch, and the tasks completed by a given worker are aligned vertically along the y-axis.

The top two subplots show the value of pool maintenance – although stragglers are still present under pool maintenance, there are considerably fewer and lower magnitude stragglers as compared to the baseline pool. The bottom two subplots show that maintenance can further improve straggler mitigation by reducing the number of stragglers that must be ameliorated.

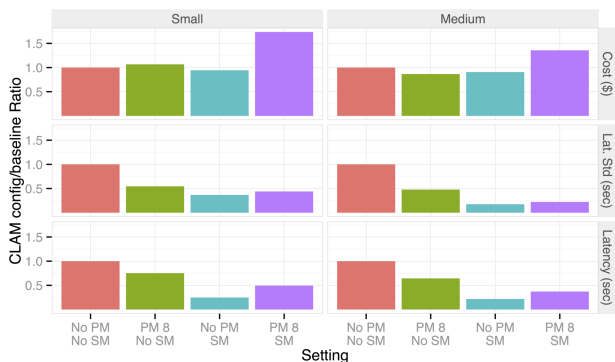


Figure 12: End-to-end Latency, Variance, and Costs for different straggler mitigation and pool maintenance configurations.

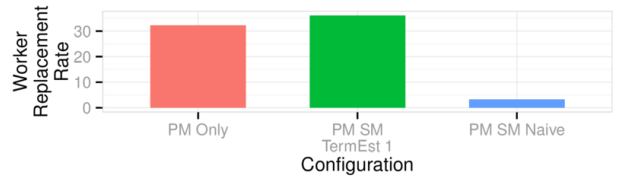


Figure 14: Replacement rate when using **TermEst** (Section 4.3) with $\alpha = 1$.

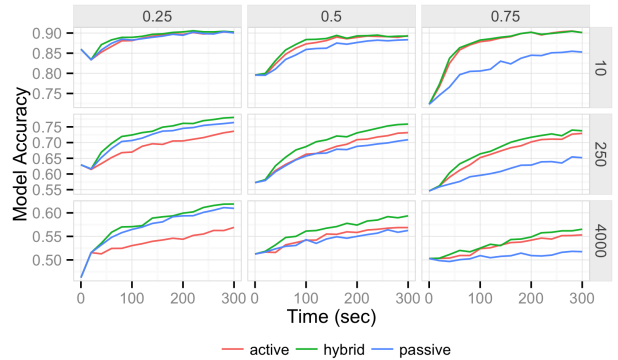


Figure 15: Active, Passive, and Hybrid strategies for learning on crowds run on generated datasets in the simulator.

Effect of TermEst. Figure 14 measures the effectiveness of our model for estimating the latency of terminated tasks (Section 4.3). We see that, as expected, without **TermEst**, the worker replacement rate decreases dramatically, because workers are estimated to be faster than PM_ℓ and are not replaced. Adding **TermEst** adjusts for the gap: with it turned on, replacement happens just as frequently as with no straggler mitigation.

6.5 Hybrid Learning

In this section, we evaluate our hybrid learning strategy, demonstrating that it is effective on datasets where either active or passive learning would perform better, and that it successfully takes advantage of pool parallelism to reduce the time required to train a good model.

Accuracy. The Hybrid algorithm depends on the assumption that active learning does not outperform passive learning in all settings. Figure 15 validates this assumption in our simulator. It plots learning curves for active and passive learning on generated datasets of increasing hardness (rows show number of generated features), and shows how each learner performs given different amounts of the crowd's resources (columns show the percentage of the crowd pool used for active learning). On easier datasets, active learning significantly outperforms passive learning, but when given as many resources as active learning, passive learning is the better choice on harder learning tasks where active point selection is ineffective. This reinforces our belief that a successful hybrid strategy can trade off between the two approaches, and the hybrid lines in both Figure 15 and Figure 16 (wherein we replicate the simulator results on real-world datasets with live workers) demonstrate that the strategy is indeed successful. In all cases, hybrid performs as well as or better than either active or passive learning.

Latency savings. As a result of the fact that hybrid learning leverages the full parallelism of the crowd (as opposed to active learning with a limited batch size), the hybrid learning strategy is able to train better models faster. Figure 16

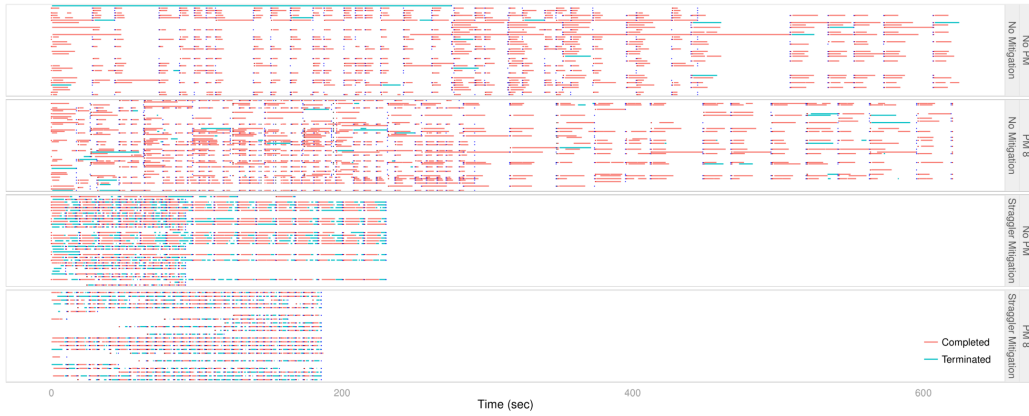


Figure 13: Per-assignment view of each straggler mitigation and churn configuration. Each horizontal segment is the length of an assignment. Red and blue dots denote batch boundaries

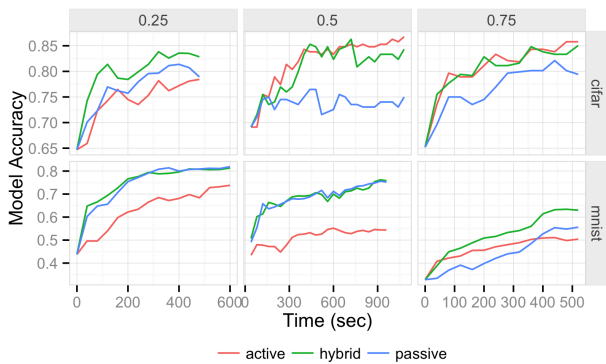


Figure 16: Active, Passive, and Hybrid strategies for learning on crowds run on real-world datasets on live workers.

shows the hybrid learning strategy’s performance compared to pure active or pure passive over time on the MNIST and CIFAR datasets. The x and y axes of each plot show the accuracy improvement over time as points are labeled, the rows depict the datasets, and the columns represent the setting of the AL batch size as a percentage of the crowd pool size. In the same amount of time, the hybrid strategy is always the preferred solution for model training. In fact, on average, hybrid trains models of 85% accuracy on CIFAR (70% accuracy on MNIST) $1.2\times$ ($1.7\times$) faster than pure active learning and $1.6\times$ ($1.2\times$) faster than pure passive learning.

6.6 End-to-End Evaluation

In this section, we evaluate the end-to-end performance of CLAMShell against two baselines. **Base-NR**, which represents a typical crowd labeling deployment, sends labels out all at once, uses no retainer pool, and trains passive learning models to infer labels for unlabeled records. **Base-R**, which leverages the latest techniques for low-latency crowdsourcing, uses a retainer pool to label points in batches and active learning to infer labels for unlabeled records. In this experiment, 500 points were labeled by each strategy on the CIFAR-10 and MNIST datasets, and the accuracy of the resulting models were measured.

Results. Figures 17 and 18 summarize the results of this evaluation. In Figure 17, the rows represent an accuracy threshold for the model, and the plots show the wall-clock

time taken by each strategy to train a model of that accuracy. Note that neither baselines reach an accuracy of 80% on the MNIST dataset in 500 points. To reach an accuracy of 75%, CLAMShell requires 4 to $5\times$ less time than **Base-NR**. On the CIFAR dataset, CLAMShell does not significantly outperform **Base-R**, because passive learning performs well on CIFAR and the benefits of hybrid learning are limited. Figure 18 displays the full learning curves for each strategy, demonstrating that CLAMShell dominates both baselines in terms of model accuracy.

We also measured the raw time to acquire 500 labels from the crowd, and found that CLAMShell increases the labeling throughput by $7.24\times$ compared to **Base-NR**. In addition, CLAMShell reduces the variance of labeling by $151\times$, and the absolute values are extremely low: 3.1 seconds vs. 475 seconds.

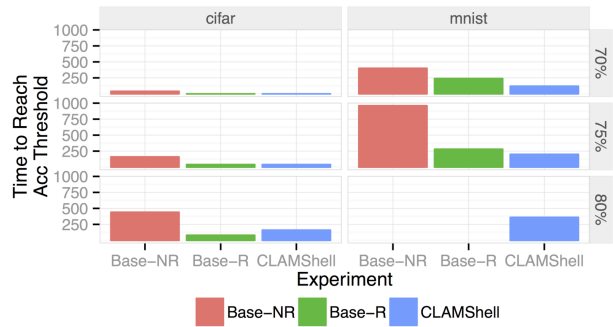


Figure 17: Summary of end to end to reach model accuracy

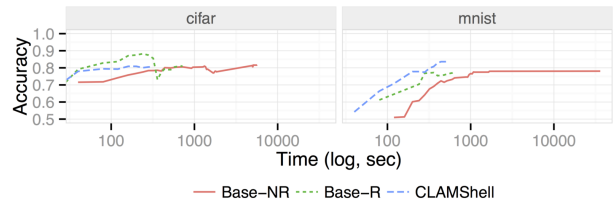


Figure 18: Wall clock time vs Model Accuracy

7. CONCLUSION & FUTURE DIRECTIONS

In summary, we have introduced CLAMShell, a system for data labelling that acquires labels from human crowd workers at interactive speeds. Latency can arise from many

points in the labeling lifecycle, and CLAMShell addresses the key sources of latency with techniques that explore novel regions of the cost-accuracy-speed tradeoff. Straggler mitigation reduces the variance of task latencies within a batch by assigning additional workers to complete the task. Pool maintenance increases the average speed of workers in a labeling pool by replacing slow workers with faster ones over time. Hybrid learning reduces end-to-end labeling time by combining the fast convergence of active learning with the parallelism of passive learning. The result is an important step towards integrating data labeling with interactive systems for data analysis.

Though CLAMShell takes a comprehensive approach to latency reduction for data labeling, there are a number of directions in which this work can be extended. First, we would like to explore richer objective functions than mean worker speed for pool maintenance in order to strike a balance between worker speed, variance and quality. In addition, hybrid learning simply trains a single model on the points labeled by active and passive learners. We would like to investigate whether better models can be trained by keeping the points separate and using more sophisticated machine learning techniques such as model averaging or ensembling. Finally, we are integrating CLAMShell with an interactive data cleaning system [21] in order to learn how it performs with application-driven latency constraints on a wider range of crowd tasks.

We are grateful to the hundreds of crowd workers who made this work possible. This material is based upon work supported by the National Science Foundation Graduate Research Fellowship under Grant No. DGE 1106400. This research is supported in part by NSF CISE Expeditions Award CCF-1139158, DOE Award SN10040 DE-SC0012463, and DARPA XData Award FA8750-12-2-0331, and gifts from Amazon Web Services, Google, IBM, SAP, The Thomas and Stacey Siebel Foundation, Adatao, Adobe, Apple, Inc., Blue Goji, Bosch, Cisco, Cray, Cloudera, EMC2, Ericsson, Facebook, Fujitsu, Guavus, HP, Huawei, Informatica, Intel, Microsoft, NetApp, Pivotal, Samsung, Schlumberger, Splunk, Virdata and VMware.

References

- [1] A. Abouzeid, D. J. Abadi, and A. Silberschatz. Invisible loading: access-driven data transfer from raw files into database systems. *EDBT*, 2013.
- [2] A. Agarwal et al. Sentiment analysis of Twitter data. *LASM*, 2011.
- [3] G. Ananthanarayanan et al. Reining in the Outliers in Map-Reduce Clusters using Mantri. *OSDI*, 2010.
- [4] G. Ananthanarayanan et al. Effective Straggler Mitigation: Attack of the Clones. *NSDI*, 2013.
- [5] M. S. Bernstein, J. Brandt, R. C. Miller, and D. R. Karger. Crowds in two seconds: enabling realtime crowd-powered interfaces. *UIST*, 2011.
- [6] M. S. Bernstein et al. Soylent: a word processor with a crowd inside. *UIST*, 2010.
- [7] M. S. Bernstein, D. R. Karger, R. C. Miller, and J. Brandt. Analytic Methods for Optimizing Realtime Crowdsourcing. *Collective Intelligence*, 2012.
- [8] J. P. Bigham et al. *VizWiz: nearly real-time answers to visual questions*. *UIST*, 2010.
- [9] C. Callison-Burch. Fast, cheap, and creative: evaluating translation quality using Amazon’s Mechanical Turk. *EMNLP*, 2009.
- [10] S. Chakraborty et al. Adaptive Batch Mode Active Learning. *Trans. Neural Netw. Learning Sys.*, 2015.
- [11] D. A. Cohn, Z. Ghahramani, and M. I. Jordan. Active Learning with Statistical Models. *JAIR*, 1996.
- [12] A. Das Sarma et al. Crowd-powered find algorithms. *ICDE*, 2014.
- [13] J. Dean and S. Ghemawat. MapReduce: simplified data processing on large clusters. *Communications of the ACM*, 2008.
- [14] C. Diaconu et al. Hekaton: SQL server’s memory-optimized OLTP engine. *SIGMOD*, 2013.
- [15] M. J. Franklin et al. CrowdDB: answering queries with crowdsourcing. *SIGMOD*, 2011.
- [16] Y. Gao and A. G. Parameswaran. Finish them!: Pricing algorithms for human computation. *PVLDB*, 7(14):1965–1976, 2014.
- [17] A. Ghoting et al. SystemML: Declarative machine learning on MapReduce. *ICDE*, 2011.
- [18] C. Gokhale et al. Corleone: hands-off crowdsourcing for entity matching. *SIGMOD*, 2014.
- [19] J. E. Gonzalez et al. PowerGraph: Distributed Graph-Parallel Computation on Natural Graphs. *OSDI*, 2012.
- [20] I. Guyon. Design of experiments for the NIPS 2003 variable selection benchmark, 2003.
- [21] D. Haas, S. Krishnan, J. Wang, M. J. Franklin, and E. Wu. Wisteria: Nurturing Scalable Data Cleaning Infrastructure. *VLDB*, 2015.
- [22] Hadoop. <http://hadoop.apache.org/>.
- [23] P. Ipeirotis and J. Horton. Visualizations of the oDesk “oConomy”: Exploring Our World of Work. <https://www.upwork.com/blog/2012/07/visualizations-of-odesk-economy/>, 2012.
- [24] P. G. Ipeirotis. Analyzing the Amazon Mechanical Turk marketplace. *ACM Crossroads*, 2010.
- [25] P. G. Ipeirotis, F. Provost, and J. Wang. Quality management on Amazon Mechanical Turk. *SIGKDD*, 2010.
- [26] M. I. Jordan and T. M. Mitchell. Machine learning: Trends, perspectives, and prospects. *Science*, 2015.
- [27] U. Jugel, Z. Jerzak, G. Hackenbroich, and V. Markl. M4: A Visualization-Oriented Time Series Data Aggregation. *VLDB*, 2014.
- [28] S. Kandel, A. Paepcke, J. M. Hellerstein, and J. Heer. Wrangler: interactive visual specification of data transformation scripts. *CHI*, 2011.
- [29] D. R. Karger, S. Oh, and D. Shah. Iterative Learning for Reliable Crowdsourcing Systems. *Advances in neural information processing systems (NIPS)*, 2011.
- [30] Keystone ML. <http://keystone-ml.org/>.
- [31] A. Kittur, E. H. Chi, and B. Suh. Crowdsourcing user studies with Mechanical Turk. *CHI*, 2008.
- [32] A. Krizhevsky. Learning multiple layers of features from tiny images, 2009.
- [33] G. P. Krueger. Sustained work, fatigue, sleep loss and performance: A review of the issues. *Work & Stress*, 2007.
- [34] Y. LeCun et al. Gradient-based learning applied to document recognition. *Proceedings of the IEEE*, 86(11):2278–2324, 1998.
- [35] Z. Liu, B. Jiang, and J. Heer. imMens: Real-time Visual Querying of Big Data. *EuroVis*, 2013.
- [36] A. Marcus, D. Karger, S. Madden, R. Miller, and S. Oh. Counting with the crowd. *VLDB*, 2012.
- [37] A. Marcus and A. Parameswaran. Crowdsourced data management industry and academic perspectives. *Foundations and Trends in Databases*, 2015.
- [38] A. Marcus, E. Wu, D. Karger, S. Madden, and R. Miller. Human-powered sorts and joins. *VLDB*, 2011.
- [39] S. Melnik et al. Dremel: interactive analysis of web-scale datasets. *VLDB*, 2010.
- [40] X. Meng et al. MLlib: Machine Learning in Apache Spark. *arXiv.org*, 2015.
- [41] B. Mozafari et al. Scaling up crowd-sourcing to very large datasets: a case for active learning. *VLDB*, 2014.
- [42] Amazon Mechanical Turk. <https://www.mturk.com/>.
- [43] T. Mühlbauer et al. Instant loading for main memory databases. *VLDB*, 2013.
- [44] A. G. Parameswaran et al. DataSift: An Expressive and Accurate Crowd-Powered Search Toolkit. *HCOMP*, 2013.
- [45] F. Pedregosa et al. Scikit-learn: Machine learning in Python. *Journal of Machine Learning Research*, 12:2825–2830, 2011.
- [46] A. Ramesh et al. Identifying Reliable Workers Swiftly. Technical report, Stanford University, 2012.
- [47] B. Settles. Active learning literature survey. Technical report, University of Wisconsin-Madison, 2010.
- [48] M. Stonebraker et al. C-store: a column-oriented DBMS. *VLDB*, 2005.
- [49] M. Stonebraker et al. Data Curation at Scale: The Data Tamer System. *CIDR*, 2013.
- [50] B. Trushkowsky, T. Kraska, M. J. Franklin, and P. Sarkar. Crowdsourced enumeration queries. *ICDE*, 2013.
- [51] J. Wang, T. Kraska, M. J. Franklin, and J. Feng. CrowdER: Crowdsourcing Entity Resolution. *VLDB*, 2012.
- [52] J. Wang, S. Krishnan, M. J. Franklin, K. Goldberg, T. Kraska, and T. Milo. A sample-and-clean framework for fast and accurate query processing on dirty data. *SIGMOD*, 2014.
- [53] H. Wickham. Bin-summarise-smooth: a framework for visualising large data. Technical report, RStudio, 2013.
- [54] E. Wu, L. Battle, and S. R. Madden. The Case for Data Visualization Management Systems. *VLDB*, 2014.
- [55] M. Zaharia et al. Improving MapReduce Performance in Heterogeneous Environments. *OSDI*, 2008.
- [56] M. Zaharia et al. Resilient distributed datasets: A fault-tolerant abstraction for in-memory cluster computing. *NSDI*, 2012.
- [57] M. Zukowski, M. van de Wiel, and P. A. Boncz. Vectorwise: A Vectorized Analytical DBMS. *ICDE*, 2012.