


Supplement of Atmos. Chem. Phys., 15, 3991–4024, 2015
<http://www.atmos-chem-phys.net/15/3991/2015/>
doi:10.5194/acp-15-3991-2015-supplement
© Author(s) 2015. CC Attribution 3.0 License.



Atmospheric
Chemistry
and Physics
Open Access

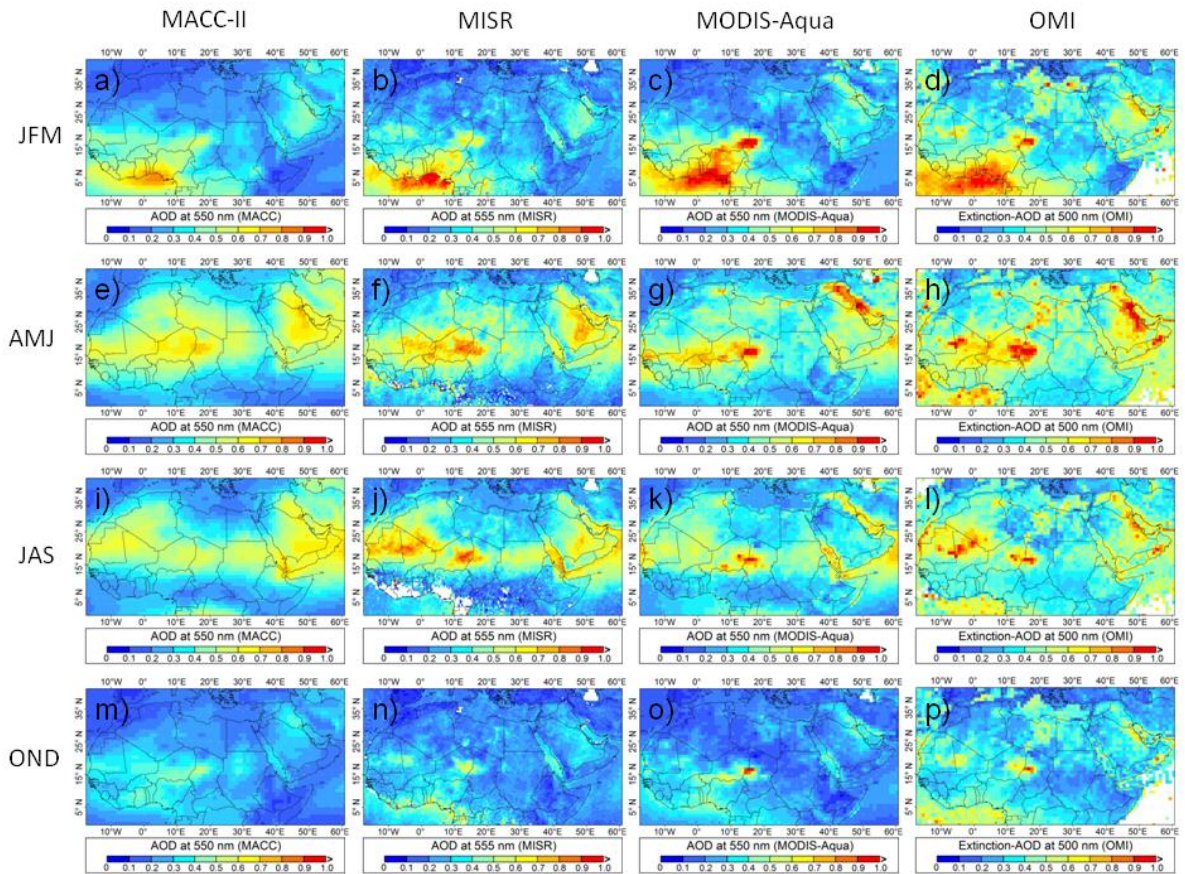
The logo for the journal Atmospheric Chemistry and Physics, featuring the letters 'EG' inside a stylized globe.

Supplement of

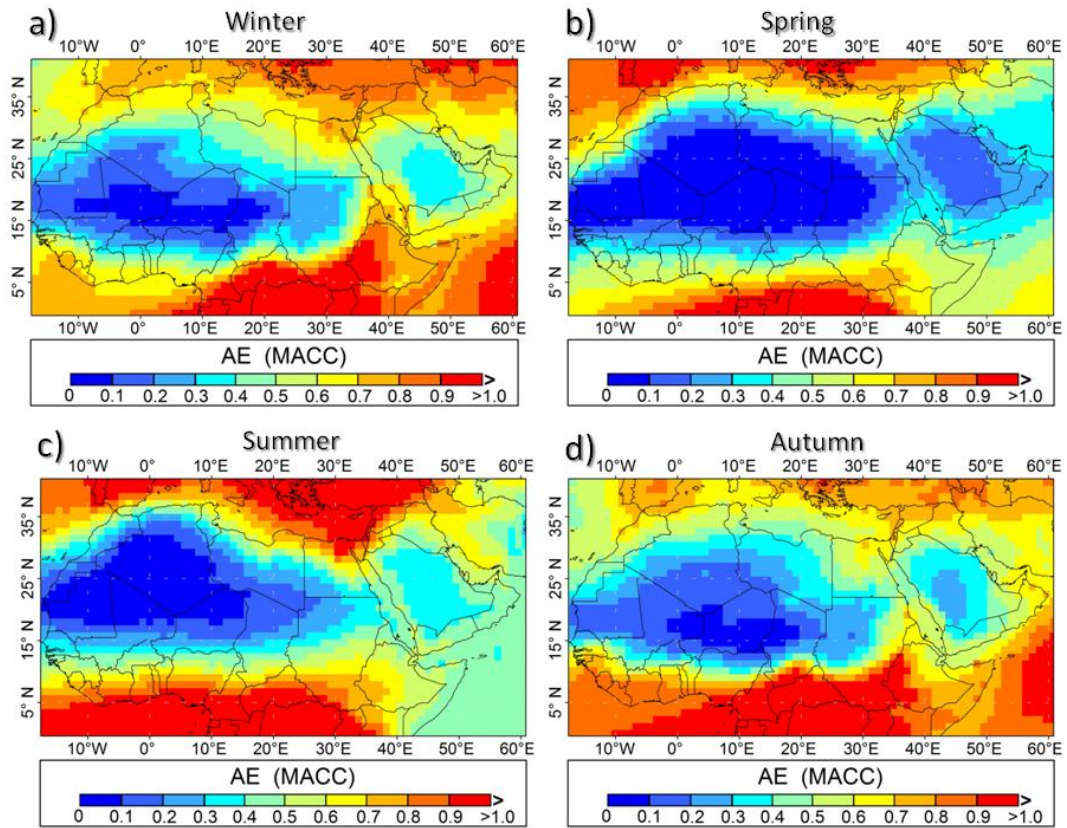
The MACC-II 2007–2008 reanalysis: atmospheric dust evaluation and characterization over northern Africa and the Middle East

E. Cuevas et al.

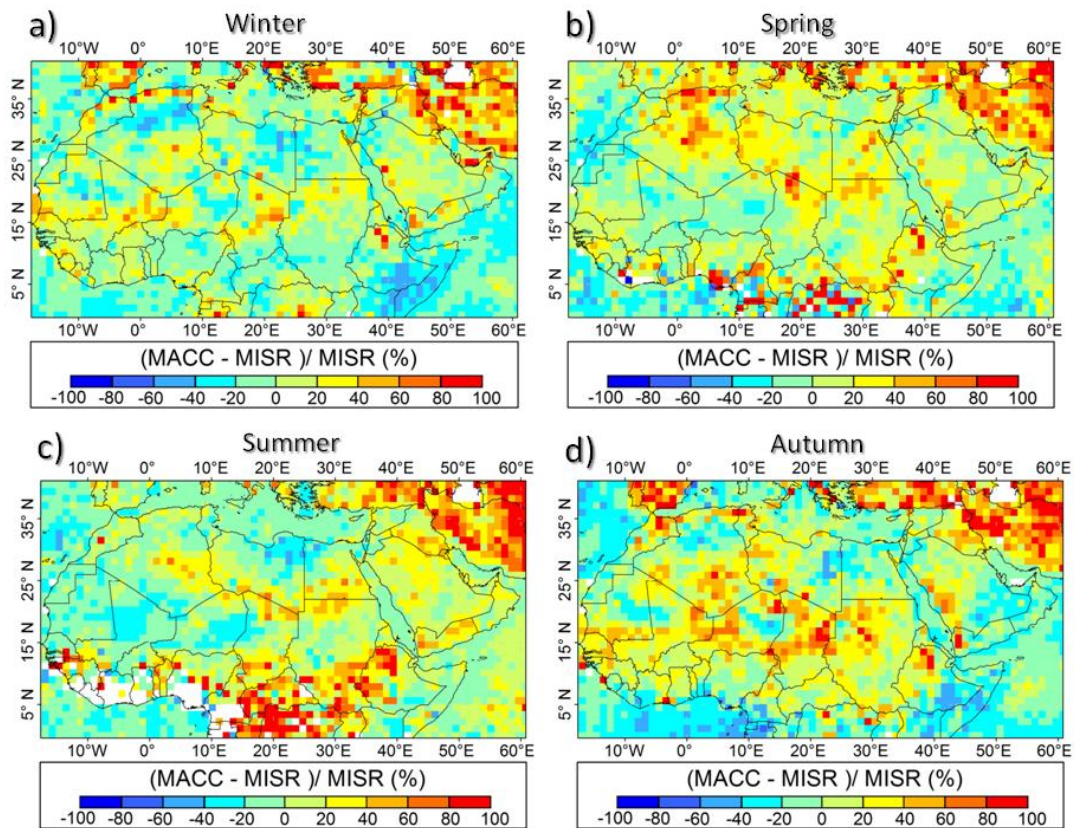
Correspondence to: E. Cuevas (ecuevasa@aemet.es)



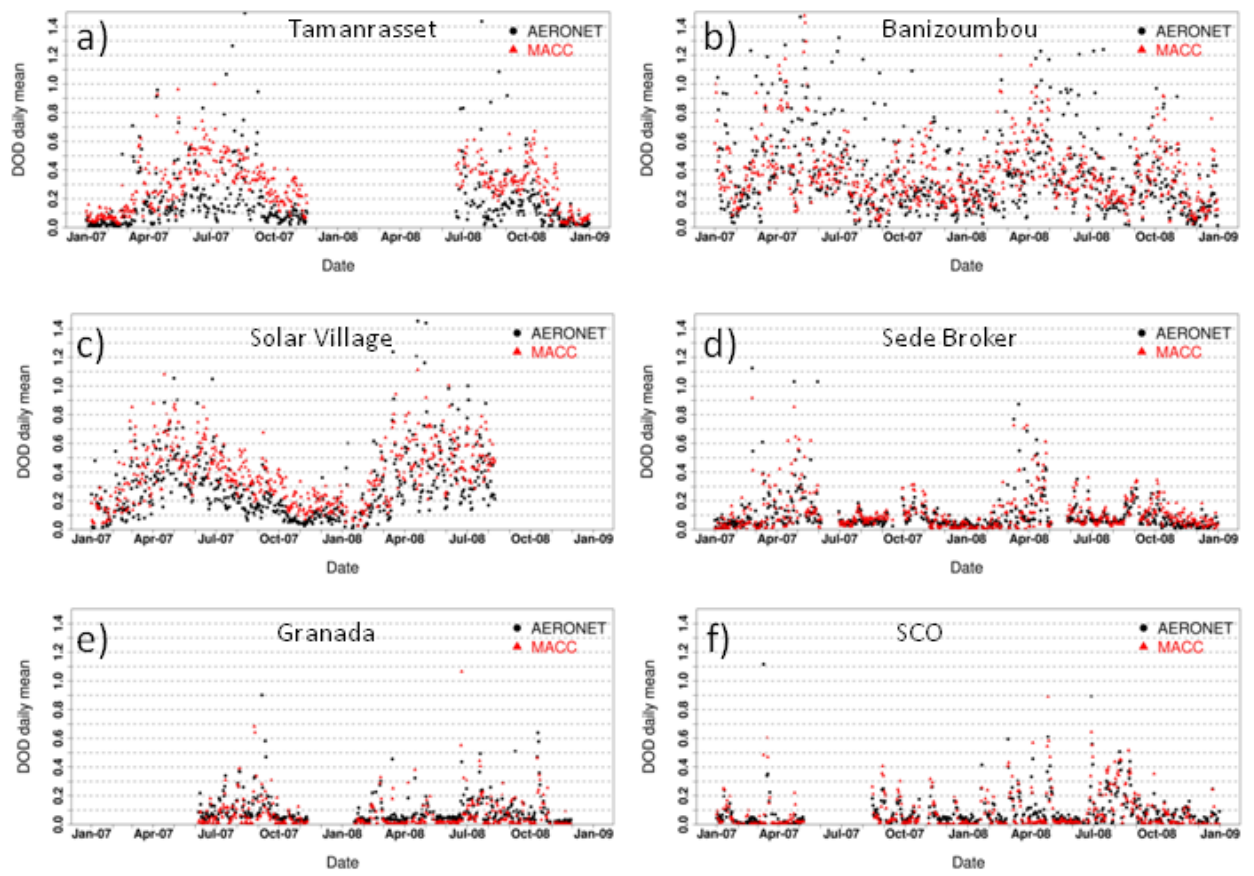
S1. Seasonal AOD averages from MACC, MISR, MODIS and OMI for the period 2007-2008. Winter (JFM), spring (AMJ), summer (JAS) and autumn (OND).



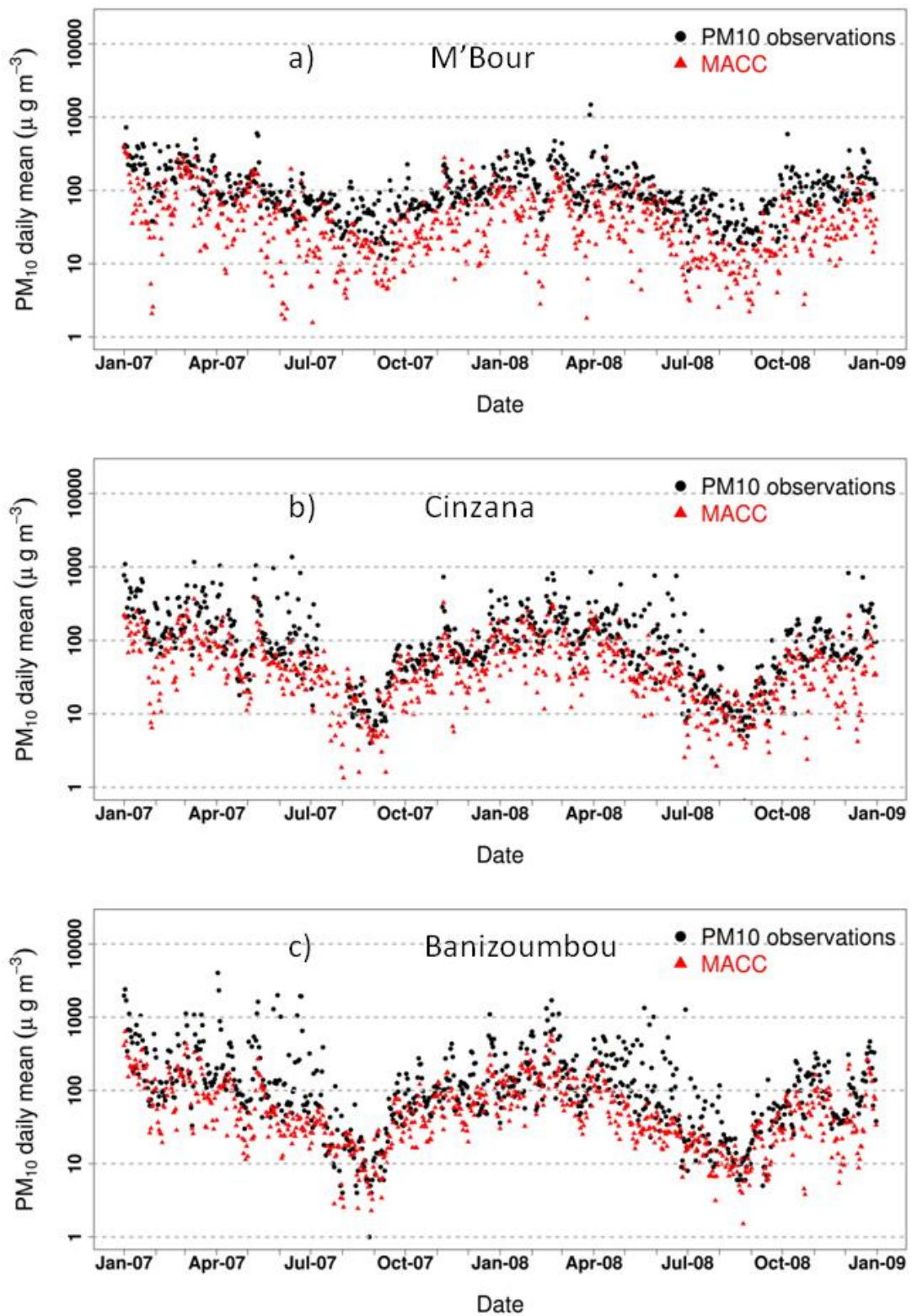
S2. Seasonal AE averages from MACC-II for the period 2007-2008. The seasons are the following: winter (JFM), spring (AMJ), summer (JAS) and autumn (OND).



S3. AOD MACC-II-MISR Normalized Mean Bias (MNB) expressed as $100 * (\text{MACC-II-MISR}) / \text{MISR}$ for the four seasons during the period 2007-2008. Only simultaneous MACC-II/MISR data have been used to compute the ratios.



S4. DOD daily means from MACC-II and AERONET at Tamanrasset (a), Banizoumbou (b), Solar Village (c), Sede Boker (d), Granada (e) and SCO (f) for the period 2007-2008.



S5. Daily surface dust concentration ($\mu\text{g m}^{-3}$) from MACC-II and in-situ PM₁₀ ($\mu\text{g m}^{-3}$) from AMMA stations at M'Bour (a), Cinzana (b) and Banizoumbou (c) for the period 2007-2008.