



The BERkeley Atmospheric CO₂ Observation Network: initial evaluation

Alexis A. Shusterman¹, Virginia E. Teige¹, Alexander J. Turner², Catherine Newman¹, Jinsol Kim³, and Ronald C. Cohen^{1,3}

¹Department of Chemistry, University of California Berkeley, Berkeley, CA 94720, USA

²School of Engineering and Applied Sciences, Harvard University, Cambridge, MA 02138, USA

³Department of Earth and Planetary Science, University of California Berkeley, Berkeley, CA 94720, USA

Correspondence to: Alexis A. Shusterman (shusterman.alexis@berkeley.edu) and Ronald C. Cohen (rccohen@berkeley.edu)

Received: 17 June 2016 – Published in Atmos. Chem. Phys. Discuss.: 23 June 2016

Revised: 9 September 2016 – Accepted: 10 October 2016 – Published: 31 October 2016

Abstract. With the majority of the world population residing in urban areas, attempts to monitor and mitigate greenhouse gas emissions must necessarily center on cities. However, existing carbon dioxide observation networks are ill-equipped to resolve the specific intra-city emission phenomena targeted by regulation. Here we describe the design and implementation of the BERkeley Atmospheric CO₂ Observation Network (BEACO₂N), a distributed CO₂ monitoring instrument that utilizes low-cost technology to achieve unprecedented spatial density throughout and around the city of Oakland, California. We characterize the network in terms of four performance parameters – cost, reliability, precision, and systematic uncertainty – and find the BEACO₂N approach to be sufficiently cost-effective and reliable while nonetheless providing high-quality atmospheric observations. First results from the initial installation successfully capture hourly, daily, and seasonal CO₂ signals relevant to urban environments on spatial scales that cannot be accurately represented by atmospheric transport models alone, demonstrating the utility of high-resolution surface networks in urban greenhouse gas monitoring efforts.

tal emissions and enacting multi-faceted regulations aimed at achieving these caps (e.g., A.B. 32, 2006; United Nations, 2015). As of yet there exists no mechanism for judging the efficacy of these individual rules or verifying compliance through direct observations of changes in CO₂ at the scale of cities (Duren and Miller, 2012).

Traditional strategies for assessing greenhouse gas emissions are limited to a small handful of monitoring instruments scattered sparsely across remote areas, mostly in developed nations (e.g., Worthy et al., 2003; Thompson et al., 2009; Andrews et al., 2014). These stations are capable of measuring regional averages and some integrated urban concentrations with extreme accuracy and precision, but are purposefully distanced from, and experience reduced sensitivity to, urban signals, thus giving little to no spatially resolved information on emissions in the precise areas that the majority of greenhouse gas rules aim to regulate.

The increasing significance of urban emissions combined with the proliferation of commercial cavity ring-down spectroscopic instrumentation has resulted in a recent trend towards network sensing approaches for constraining greenhouse gas emissions in cities. For example, Ehleringer et al. (2008) maintain a CO₂ monitoring network in the Salt Lake City metropolitan area, the INFLUX network measures CO₂, ¹⁴CO₂, and total column CO₂ across the city of Indianapolis (Turnbull et al., 2015), and NASA's Megacities Carbon Project has established sensor networks in the pilot cities of Los Angeles (Kort et al., 2013) and Paris (Bréon et al., 2015). These ground-based monitoring efforts are complemented by space-based observations from SCHIAMACY

1 Introduction

As two-thirds of the human population stand to inhabit cities by 2050 (United Nations, 2014), developing a thorough understanding of urban greenhouse gas emissions is of ever-growing importance. International and local law-making bodies around the world are agreeing to caps on to-

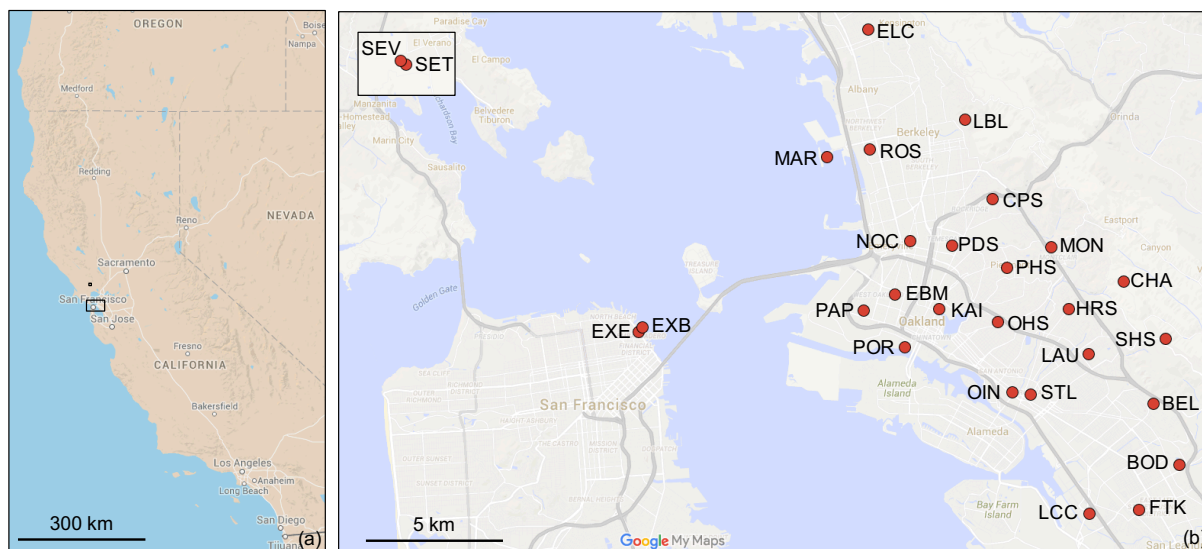


Figure 1. Map of the BEACO₂N domain (a) in the context of the western United States and (b) showing individual node locations. Inset in panel (b) shows the pair of nodes stationed in Sonoma County.

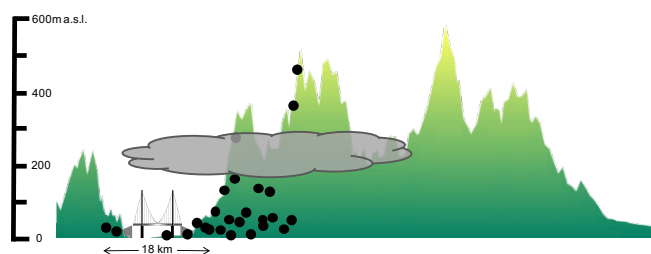


Figure 2. North-facing schematic of Fig. 1 indicating the vertical distribution of BEACO₂N node sites (circles) over the topography of Oakland, CA. The cloud marks the altitude and thickness of a typical marine fog layer; the bridge delineates the height of the San Francisco–Oakland Bay Bridge. Horizontal placement of nodes has been skewed for visual clarity.

(Burrows et al., 1995), GOSAT (Yokota et al., 2009), and most recently the Orbiting Carbon Observatory-2 (OCO-2), launched in July 2014, which provides total column CO₂ measurements over 1.29 by 2.25 km footprints once every 16 days (Eldering et al., 2012).

Thus far, the urban surface projects have relied on a relatively small number of instruments (between 5 and 15) distributed with sensor-to-sensor distances of 5 to 35 km. Initial efforts suggest this approach may be effective at characterizing average citywide emissions over monthly to annual timescales (McKain et al., 2012), however it has yet to be used to identify and quantify specific emission activities at neighborhood scales. To resolve individual emission sources, much finer spatial resolution is needed. Simple Gaussian dispersion models with total reflection at the surface predict > 95 % of the one-dimensional footprint of a

sensor 10 m above ground level to be within 1.1 km of the sensor under typical conditions (Seinfeld and Pandis, 2006), and prior studies (e.g., Zhu et al., 2006; Beckerman et al., 2007; Choi et al., 2014) have observed *e*-folding distances of ~ 100 to 1000 m for urban pollutant plumes mixing into the local background.

Here we propose an alternative approach that strikes a different balance between instrument quality and quantity than in previous CO₂ monitoring efforts. The Berkeley Atmospheric CO₂ Observation Network (BEACO₂N) is a large-scale network instrument that aims to leverage low-cost sensing techniques in order to enable a spatially dense network of CO₂-sensing “nodes” in and around the city of Oakland, California (Figs. 1 and 2). Using commercial CO₂ instrumentation of moderate quality and a suite of low-cost trace gas sensors for additional source attribution specificity, BEACO₂N is able to achieve an unprecedented spatial resolution of approximately 2 km – to our knowledge the only sensor network to date that monitors CO₂ on scale with the heterogeneous patterns of urban sources and sinks (see Fig. 3 for examples of intra-city CO₂ flux gradients). We present an initial description and characterization of the instrument, beginning with a description of the nodes, their locations, and the development of various laboratory and in situ calibration techniques. We then evaluate the network in terms of four factors – cost, reliability, precision, and systematic uncertainty, described below – and conclude by demonstrating BEACO₂N’s ability to resolve CO₂ signals of significance to the urban environment.

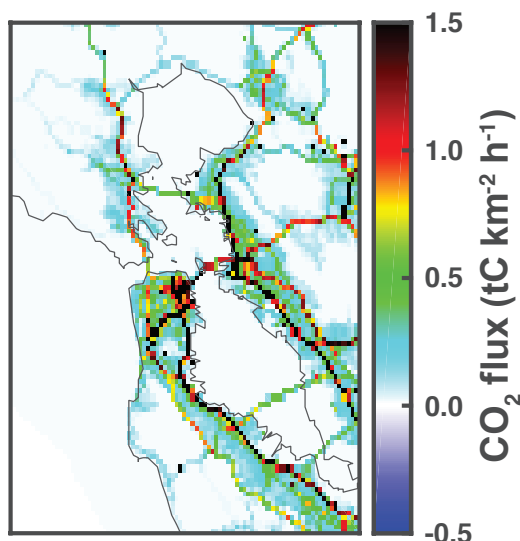


Figure 3. A sample high-resolution bottom-up emissions inventory for the Bay Area adapted from Turner et al. (2016).

1.1 Cost

In order to remain cost-competitive with other, less dense networks employing higher-grade instrumentation, a high-density network must utilize sensors with a price 1–2 orders of magnitude lower. However, as sensor price often scales with quality, low-cost instrumentation may carry associated penalties in other domains, such as diminished precision, persistent bias, or the need for frequent maintenance and/or recalibration. Thus, we seek to optimize the trade-off between cost and the other considerations.

1.2 Reliability

Network reliability consists of sensor uptime and continuity of the data stream and is crucial to enabling comparison and averaging across sites as well as improving the statistics of temporal analyses. Poor reliability also has an indirect impact on cost via the resources expended on repeat maintenance visits and/or replacement part purchases.

1.3 Precision

The precision requirements at each individual site vs. for a network instrument as a whole vary depending on the phenomena of interest. Metropolitan regions produce < 10 ppm CO₂ enhancements in the boundary layer (Pacala et al., 2010), requiring sensitivity to changes that are orders of magnitude smaller for the characterization of citywide integrated inter-annual trends, for example. More specifically, according to the First Update to the Climate Change Scoping Plan, the state of California would have to reduce its overall CO₂ emissions by 4.7 million metric tons per year to achieve its goal of reaching 1990 emission levels by 2020 (Brown et

al., 2014). Assuming a fraction of that total reduction is attributable to the San Francisco Bay Area in proportion to its population (~ 20 % of the California total), this amounts to a change of -2.6×10^6 kg CO₂ day⁻¹ for the San Francisco Bay Area. Given a residence time of air in the region of 1 day, these emissions reductions spread evenly over the 22 681 km² domain and through a 1 km boundary layer would lead to a 65 ppb annual decrease in the daily CO₂ concentrations. If the goal is verification of regional inter-annual emissions targets, we would therefore require N instruments of sufficient individual sensitivity and spatial representativeness such that their combined signals allow us to detect annual changes of ~ 65 ppb year⁻¹ with confidence.

However, the true strength of the high-density approach lies in the individual sensors' (or sub-group of sensors') sensitivity to intra-city phenomena, which are orders of magnitude larger by virtue of their proximity to sources not yet diluted by advection. Larger signal sizes forgive poorer precision in the individual instruments, but demand sufficient temporal resolution to capture these anomalous, often unexpected, events of short duration on top of slowly varying domain-wide fluctuations in the background concentration. Because the BEACO₂N instrument is unique in its sensitivity to these highly local processes, we will focus on this latter specification of the instrument precision in the characterization that follows.

1.4 Systematic uncertainty

Systematic uncertainties can be incurred somewhat abruptly during the initial field installation (bias) or accrued more gradually over time (drift). Systematic uncertainty in the sensor readings is of particular concern in a large-scale network deployment where on-site calibration materials such as reference gases are infeasible and frequent maintenance visits are undesirable. To ensure trustworthy observations, a given network sensing approach must demonstrate some combination of (a) instrumentation that is reasonably robust against sudden or gradual introduction of systematic uncertainty, (b) a post hoc correction for systematic uncertainty in the data record, and/or (c) a procedure for identifying and replacing sensors whose systematic uncertainties cannot be remedied via the prior methods.

2 Node design, calibration, and deployment

Each BEACO₂N node contains a non-dispersive infrared Vaisala CarboCap GMP343 sensor for CO₂ as well as SGX Sensortech MiCS-4514 and MiCS-2614 metal oxide-based micro-sensors used to detect CO/NO₂ and O₃, respectively. Following a large-scale node refurbishment and upgrading effort in mid-2014, these core elements are now supplemented with a Sensirion SHT15 and Bosch Sensortec BMP180 sensor for measuring humidity (SHT15), pressure

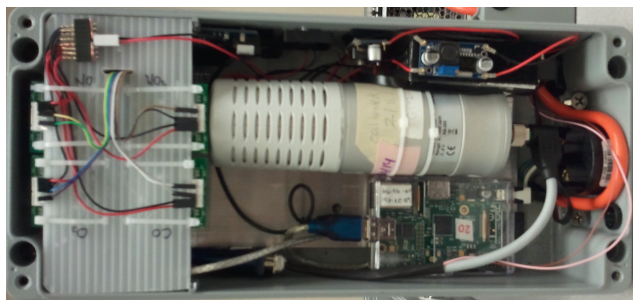


Figure 4. Current BEACO₂N node design.

(BMP180), and temperature (both), a Shinyei PPD42NS nephelometric particulate matter sensor, and a suite of Alphasense B4 electrochemical trace gas sensors for O₃, CO, NO, and NO₂. Discussion of these latter, air-quality-related technologies will follow in a forthcoming paper.

All sensors are assembled into compact, weatherproof enclosures as seen in Fig. 4. A Raspberry Pi microprocessor automates data collection via a serial-to-USB converter (for CO₂, every ~ 2 s) and an Arduino Leonardo microcontroller (for everything else, every ~ 10 s), then transmits data to a central server using either (a) a direct on-site Ethernet connection, (b) a Ubiquiti NanoStation locoM2 Wi-Fi antenna, or (c) an Adafruit FONA MiniGSM cellular module. The latter has the unintended consequence of introducing a significant amount of electrical noise into the system. We reduce the impact of this noise by limiting data transmission to 2 h per day, on a rotating schedule such that no periods are disproportionately afflicted by elevated noise levels. Battery-powered real-time clock modules are also included to ensure timestamp accuracy during planned and unexpected hiatuses in internet connectivity.

Airflow through the node is maintained by two 30 mm fans, one positioned in the “intake” orientation and the other in the “outflow” orientation. An additional, passive air outlet is located adjacent to the AC/DC power supply converter to prevent excessive heating inside the node. Node enclosures measure 90 by 160 by 360 mm and are made of corrosion-resistant die-cast aluminium that minimizes meteorological and magnetic complications. Stainless steel fasteners and a weatherproof seal prevent water intrusion into the enclosure.

Laboratory calibrations are performed on each CarboCap sensor upon receipt of the instrument from the supplier and repeated whenever nodes are retrieved from the field for maintenance, resulting in a re-calibration every 12–18 months. Reference cylinders of 0, 1000, and either 320 or 370 ppm CO₂ (± 1 %) are used for ~ 10 min deliveries of each concentration to a chamber containing the sensor, which includes a built-in microprocessor that accepts the results of this multi-point calibration as input and automatically applies the appropriate corrections to the subsequent observations. The CarboCap microprocessor can also be configured to correct for the effects of oxygen, temperature, pressure, and hu-

midity. The built-in oxygen compensation is utilized at a constant value of 20.95 %, while the latter three compensations are turned off prior to sensor deployment. Instead, a post hoc correction is derived from the ideal gas law and Dalton’s law of partial pressures.

$$[\text{CO}_2]_{\text{dry}} = [\text{CO}_2]_{\text{raw}} \times \frac{1013.25 \text{ hPa}}{P_{\text{tot}}} \times \frac{T}{298.15 \text{ K}} \times \frac{1}{1 - \left(\frac{P_{\text{H}_2\text{O}}}{P_{\text{tot}}}\right)} \quad (1)$$

Here $[\text{CO}_2]_{\text{dry}}$ is the dry air mole fraction, or the amount of CO₂ that would be measured if the observed air parcel was dried and brought to standard temperature and pressure. $[\text{CO}_2]_{\text{raw}}$, T , P_{tot} , and $P_{\text{H}_2\text{O}}$ are, respectively, the raw CO₂ concentration output by the CarboCap software in ppm, the temperature measured by the internal thermometer of the CarboCap in K, the atmospheric pressure in hPa, and the partial pressure of water in hPa, derived from the dew point temperature (T_{dew} , in °C) using the August–Roche–Magnus approximation of the Clausius–Clapeyron relation as indicated below.

$$P_{\text{H}_2\text{O}} = 6.1094 \text{ hPa} \times \exp\left(\frac{17.625 T_{\text{dew}}}{243.04 + T_{\text{dew}}}\right) \quad (2)$$

For post-2014 observations, we use the pressure and dew point temperature measured inside each node enclosure by the aforementioned BMP180 and SHT15 sensors, respectively. For data collected prior to 2014, Eqs. (1) and (2) are calculated from the average sea level pressures (adjusted for altitude) and dew point temperatures measured within ~ 50 km of the BEACO₂N domain by weather stations in the NOAA Integrated Surface Database (<https://www.ncdc.noaa.gov/isd/>).

Figure 5 compares 1 min mean CO₂ dry air mole fractions calculated as described above with readings from a custom cavity ring-down reference instrument based on the Picarro G2301 analyzer system co-located with an in-field CarboCap over the course of 2 weeks in January 2016. The ratios between the CarboCap and Picarro observations are then shown in Fig. 6 as a function of temperature, total pressure, and the partial pressure of water. Although most of the impact of these environmental variables is removed by the ideal gas-law-based correction in Eq. (1), slight dependencies on each variable remain, likely due to their influence on the vibrational spectra of CO₂ via pressure broadening, etc. Performing similar analyses on observations from in situ collocations with other reference instruments (see the LI-COR LI-820 in Sect. 3.4) reveals that the temperature and water dependence vary in sign and magnitude between individual sensors, while the pressure dependence is found to be quite robust. We therefore apply the following empirical correction to all CO₂ observations with coincident, on-site pressure measurements (i.e., post-2014 data sets).

$$[\text{CO}_2]_{\text{corrected}} = [\text{CO}_2]_{\text{dry}} \times (-0.00055 P_{\text{tot}} + 1.5) \quad (3)$$

Table 1. List of site names, abbreviated codes, geo-coordinates, and elevations.

Code	Full site name	Lat.	Long.	Elev. (m a.s.l.)	Elev. (m a.g.l.)
BEL	Burckhalter Elementary School	37.775	−122.167	97	8
BOD	Bishop O’Dowd High School	37.753	−122.155	82	8
CHA	Chabot Space & Science Center	37.819	−122.181	476	11
CPS	College Preparatory School	37.849	−122.241	102	4
EBM	W. Oakland EBMUD Monitoring Stn.	37.814	−122.282	6	2
ELC	El Cerrito High School	37.907	−122.294	49	13
EXB	Exploratorium (Bay)	37.802	−122.397	13	9
EXE	Exploratorium (Embarcadero)	37.801	−122.399	13	5
FTK	Fred T. Korematsu Discovery Acad.	37.737	−122.173	16	6
HRS	Head Royce School	37.809	−122.204	114	5
OIN	International Community School	37.779	−122.231	19	6
KAI	Kaiser Center	37.809	−122.264	115	111
LAU	Laurel Elementary School	37.792	−122.196	74	6
LBL	Lawrence Berkeley Nat’l Lab, Bldg. 70	37.876	−122.252	246	11
LCC	Lighthouse Community Charter School	37.736	−122.196	9	5
MAR	Berkeley Marina	37.863	−122.314	6	2
MON	Montclair Elementary School	37.830	−122.211	193	4
NOC	N. Oakland Community Charter School	37.833	−122.277	24	6
OHS	Oakland High School	37.805	−122.236	49	7
PAP	PLACE at Prescott Elementary	37.809	−122.298	12	6
PDS	Park Day School	37.832	−122.257	39	7
PHS	Piedmont Middle & High School	37.824	−122.233	86	10
POR	Port of Oakland Headquarters	37.796	−122.279	35	32
ROS	Rosa Parks Elementary School	37.865	−122.295	22	10
SET	Stone Edge Farms (near turbine)	38.289	−122.503	54	2
SEV	Stone Edge Farms (in vineyard)	38.291	−122.506	61	3
SHS	Skyline High School	37.798	−122.161	359	3
STL	St. Elizabeth High School	37.779	−122.222	28	11

The effect of this correction is shown in the histogram of CarboCap–Picarro differences in Fig. 5 (gray bars). The offset between the two instruments is reduced from -1 to ~ 0 ppm and the standard deviation of their differences is tightened from ± 1.5 to ± 1.4 ppm. This still exceeds the ± 1.0 ppm precision one would expect under average conditions given the form of Eqs. (1) and (2) and the manufacturer’s specifications for the meteorological sensors (see Sect. 3.5), the CarboCap, and the Picarro (Sect. 3.3), suggesting that the combined effect of the lingering temperature and water biases with any unknown factors is ± 0.4 ppm.

Calibrated nodes are installed on trailers and buildings 2–111 m above ground level (6–476 m above sea level), mounted to existing infrastructure or weighted industrial tripods. Rooftop position and intake orientation are chosen to optimize wireless connectivity (if applicable), maximize air exchange with the surrounding area, and minimize sampling of extremely local emission sources (e.g., rooftop ventilation ducts). BEACO₂N nodes are sited on an approximately 2 km square grid across the Oakland metropolitan area (see Figs. 1 and 2 and Table 1), often on top of schools and museums, which possess roughly the desired spatial density and also

assist the service of the educational and outreach goals of the project (see <http://beacon.berkeley.edu>). The 2 km spacing is chosen to ensure an approximately 1 km proximity to any significant CO₂ source or sink in the metropolitan area, maximizing coverage without undue overlap between neighboring footprints. Additional sites outside the 2 km grid are also included for sensitivity to potential emission sources of interest, for co-location with useful reference instruments, or as pilots for network expansion.

This largely opportunistic siting approach avoids the logistical and financial obstacles associated with tall tower sampling mechanisms, although it does present additional challenges for the quantification of network-wide phenomena in that no low-lying instrument can singlehandedly provide sensitivity to the entire domain. Installing sensors near the surface and/or built environment does ensure heightened sensitivity to individual, ground-level emissions phenomena, but it is currently unknown whether a well-reasoned combination of these locally sensitive signals from a high volume of sensors could nonetheless yield reliable information about the integrated region. A full exploration of this possibility is beyond the scope of this study; the following analyses focus

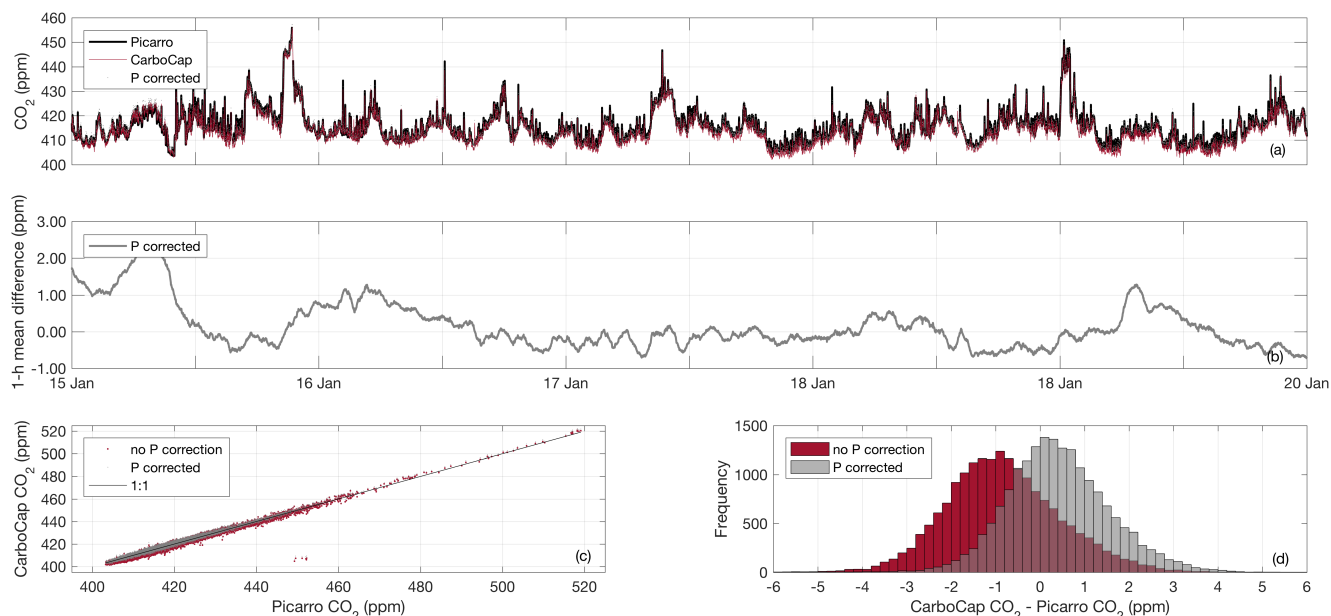


Figure 5. 1 min mean results from a two week co-location of a Vaisala CarboCap GMP343 and a custom cavity ring-down reference instrument based on the Picarro G2301 system: **(a)** representative five day time series, **(b)** 1 h running mean of the differences over the same five day period, **(c)** direct comparison, **(d)** histogram of the differences. CarboCap observations are dry air mole fractions calculated using Eq. (1) and subsequently pressure corrected with Eq. (3).

instead on establishing BEACO₂N as a viable platform for investigating such hypotheses.

3 Node performance

3.1 Cost

The Vaisala CarboCap GMP343 CO₂ sensor in this study is used in its 0 to 1000 ppm measurement range and “diffusion sampling” mode, such that representative air samples passively diffuse into the path of the infrared light beam. With these specifications, each CarboCap costs approximately USD 2800. Although less expensive technologies are available, the CarboCap design has a clear advantage in that the unit contains a digitally controlled Fabry–Pérot interferometer to switch on (4.26 μm) and off (3.9 μm) of the asymmetric stretching mode of CO₂, generating a baseline intensity measurement for each observation that compensates for variability in the light source.

Additional sensors, ancillary hardware, and labor then bring the total cost per node to ~ USD 5500, or USD 154 000 for the entire 28-node BEACO₂N instrument. For comparison, a single commercial cavity ring-down analyzer is priced around USD 60 000 and the total equipment cost can exceed USD 85 000 after accounting for pumps, data loggers, etc.

3.2 Reliability

Table 2 gives the percent uptime for nine representative BEACO₂N nodes over the course of 2013, calculated as the fraction of total minutes in the year during which a given node collected valid data. All nine nodes exhibit uptimes in excess of 50 % via either hardwired Ethernet connections or Wi-Fi antennas, with five collecting data > 80 % of the time. Maintenance visits to these sites beginning in mid-2014 revealed little to no incidence of hardware failure. Instead, external issues, such as interruptions in the electricity or Wi-Fi connectivity, are found to be the limiting factors in determining sensor uptime. Transplanting nodes to sites with more dependable electricity supplies and increasing implementation of cellular modules (which are insensitive to interruptions in on-site Wi-Fi networks) continue to enhance network reliability over time. For example, the nine most reliable nodes during the January 2015–April 2016 period all exhibit uptimes > 80 %, with five collecting data and transmitting them within the next 48 h ~ 100 % of the time via either Ethernet or cellular data communication.

3.3 Precision

From a qualitative perspective, the Vaisala CarboCap GMP343 demonstrates exceptional sensitivity to CO₂ enhancements on scales typical of an urban environment. Figure 7 compares the 1 min mean CO₂ dry air mole fractions measured at two nearby in-field BEACO₂N nodes (EXB and

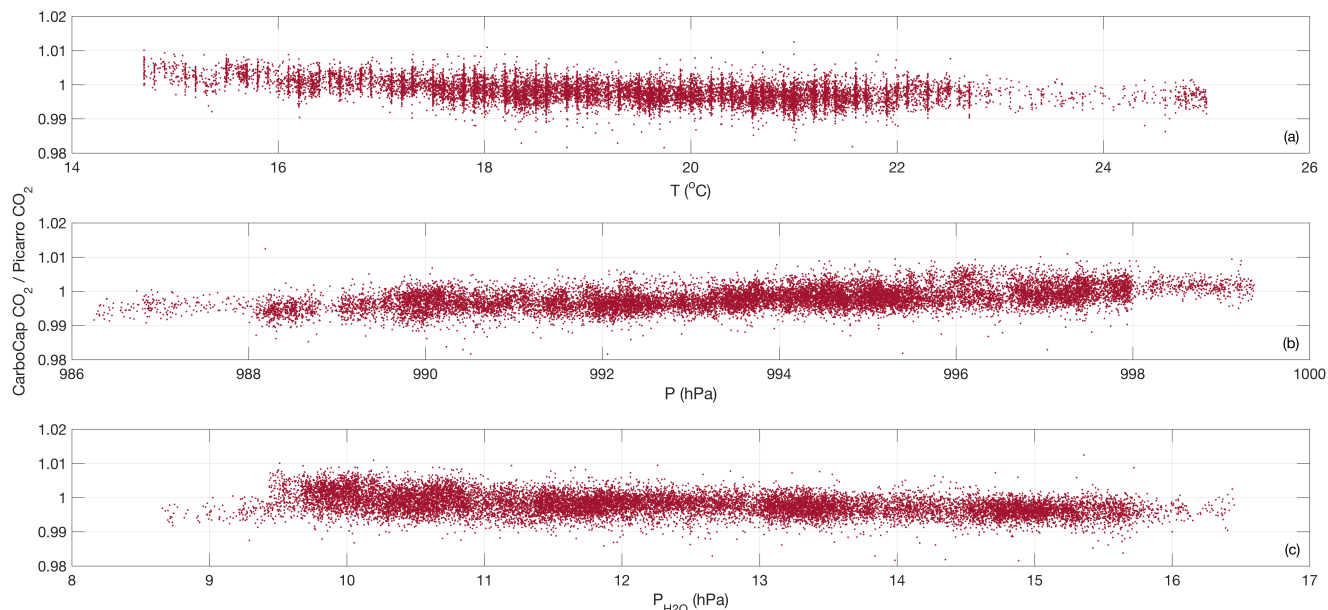


Figure 6. Ratio of 1 min mean CO₂ dry air mole fractions presented in Fig. 5, shown as a function of temperature (a), pressure (b), and the partial pressure of water (c).

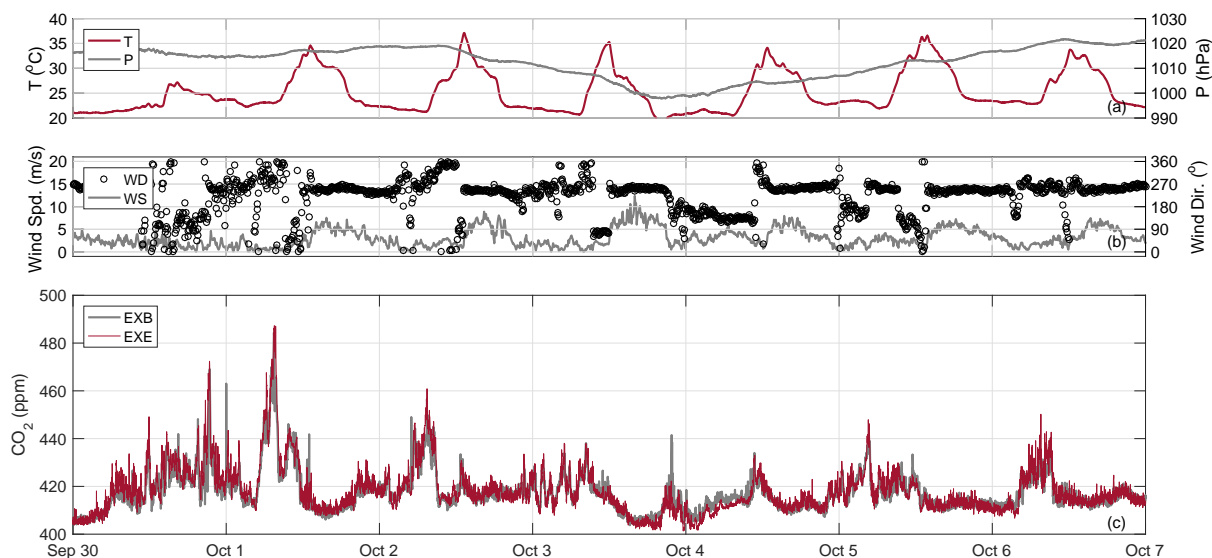


Figure 7. Representative week-long time series of observations collected at or near two nearby in-field BEACO₂N nodes (EXB and EXE in Fig. 1; ~250 m apart) in October 2015: (a) temperature and pressure averaged to 1 min, (b) wind speed and direction collected once every 6 min, (c) drift- and bias-corrected CO₂ dry air mole fractions averaged to 1 min.

EXE in Fig. 1) during 1 week in early October 2015. As these sensors are not precisely co-located (one is stationed approximately 5 m above roadside in downtown San Francisco, while the other sits ~250 m back from the road, near the bay), an exact correlation is not expected. The two sensors nonetheless demonstrate remarkable agreement; while typical diurnal CO₂ variations during the same period are on the order of 20–60 ppm, the CarboCaps simultaneously

detect CO₂ events as small as 8 ppm, providing preliminary evidence of the suitability of these sensors for high-density urban deployment.

More quantitatively, Vaisala advertises the CarboCap as possessing a response time of 75 s and a precision of ±3 ppm at 2 s measurement frequency. Here we present our own characterization of the sensors' precision via comparison to

Table 2. Descriptive statistics for the drift- and bias-corrected CO₂ dry air mole fractions measured at nine representative sites during 2013. Upper row for each site gives the daytime (11:00–18:00 LT) statistics; lower row gives the nighttime (22:00–04:00 LT). The ELC node is corrected using weekly minimum LI-COR measurements as the regional background.

Site Code	Uptime (%)	Mean (ppm)	SD (ppm)	Max (ppm)	Min (ppm)
CPS	94.6	416	21.6	589	385
		423	24.3	730	384
ELC	90.1	411	18.5	581	387
		415	21.3	567	388
FTK	73.4	415	17.7	609	387
		418	26.4	567	383
HRS	69.1	410	14.7	506	384
		428	18.4	514	398
LAU	82.6	429	22.4	687	392
		421	26.4	603	381
KAI	83.1	442	21.8	820	396
		418	24.7	604	382
NOC	87.3	411	18.4	560	387
		428	50.5	724	384
PAP	55.5	403	9.57	500	387
		411	19.1	548	388
STL	59.1	417	17.5	586	389
		421	36.9	616	383

(a) in-laboratory reference gases and (b) a co-located in situ reference instrument.

After exposing an ensemble of CarboCaps to a constant stream of reference gas, we find the 1 min mean dry air mole fractions to exhibit 1σ precision between ± 1.2 and ± 2.0 ppm, roughly in keeping with the ± 2 ppm precision observed by Rigby et al. (2008). Figure 5 shows the results from our aforementioned co-location with a Picarro G2301 reference instrument, demonstrating near perfect correlation ($R^2 = 0.9999$), slope $\cong 1$, and an offset of approximately 0 ppm after meteorological corrections. In this case the 1σ precision of the 1 min averages is ± 1.4 ppm, given by the standard deviation of the differences between the minute-averaged CarboCap and Picarro observations and the Picarro's precision (± 0.1 ppm at 5 s measurement frequency). This presents a slight improvement over the ± 2.18 ppm in situ precision recorded by van Leeuwen (2010), although still greater variability than would be expected given the manufacturer's 2 s specifications and a 1 min averaging time ($3 \text{ ppm}/\sqrt{30} = 0.55 \text{ ppm}$). Nonetheless, the agreement between the time series of the Picarro and CarboCap measurements demonstrates this noise level to be effectively negligible on the scale of ambient urban CO₂ fluctuations.

Also presented in Fig. 5 is a time series of the running 1 h means of the differences between the minute-averaged CarboCap and Picarro observations, demonstrating a short-term drift incurred on approximately hourly timescales found to

range between 0.01 and 2.9 ppm during any given 6 h period of the co-location. The upper bound exceeds the ± 1 ppm manufacturer-specified 6 h short-term stability as well as the 1.5 ppm maximum short-term drift observed by Rigby et al. (2008), but in many cases longer averaging times can be used to reduce the influence of short-term drift to well below 1 ppm. Some modeling studies, for example, utilize time steps of 6 h or more (e.g., Bréon et al., 2015; Wu et al., 2016), and average diurnal cycles can often be assessed across several days. Although some applications require finer temporal resolution, these are typically plume-based analyses that rely on rapidly varying enhancements above recent background concentrations, essentially eliminating concerns about short-term drift.

3.4 Systematic uncertainty

Given the limited access to validation and calibration infrastructure, a major concern for a long-term field deployment is systematic uncertainty resulting from a combination of gradual temporal drift (U_{temporal} , in ppm day⁻¹) and constant biases or offsets from the “true” value ($U_{\text{atemporal}}$, in ppm), perhaps incurred abruptly upon installation. The measurement at a given site ($[\text{CO}_2]_{\text{node}}$, in ppm) is therefore the sum of the real regional and local influences at said site ($[\text{CO}_2]_{\text{background}}$ and $[\text{CO}_2]_{\text{local}}$, respectively), as well as these systematic uncertainties.

$$[\text{CO}_2]_{\text{node}} = [\text{CO}_2]_{\text{background}} + [\text{CO}_2]_{\text{local}} + U_{\text{atemporal}} + (U_{\text{temporal}} \times \text{days}) \quad (4)$$

To derive post hoc corrections for $U_{\text{atemporal}}$ and U_{temporal} at a given site, we first remove the $[\text{CO}_2]_{\text{background}}$ signal from the data record by subtracting the weekly minimum CO₂ concentrations recorded at a reference site within the network domain. BEACO₂N's unique location near the Pacific coast results in a relatively consistent wind direction from largely unpolluted over-ocean origins, such that the weekly minima can be assumed to reflect both the seasonal and synoptic variations in network-wide baseline CO₂ concentrations while avoiding the influence of shorter-term variability in local sources and sinks. This assumption is supported by preliminary analyses comparing observations from a LI-COR LI-820 non-dispersive infrared CO₂ gas analyzer with a smoothed, three-dimensional “curtain” of surface CO₂ Pacific boundary conditions produced by NOAA's Global Greenhouse Gas Reference Network (Jeong et al., 2013). The LI-COR, positioned at sea level between the EXB and EXE nodes (see Fig. 1), is maintained by NOAA's Pacific Marine Environmental Laboratory and calibrated against compressed gas (400–500 ppm CO₂) prior to every hourly measurement and is assumed to have negligible bias. Despite a proximity to local surface-level emissions and complex boundary layer dynamics, the LI-COR's weekly minima are found to generally follow variations in the Pacific curtain, with an average residual of ~ 2 ppm.

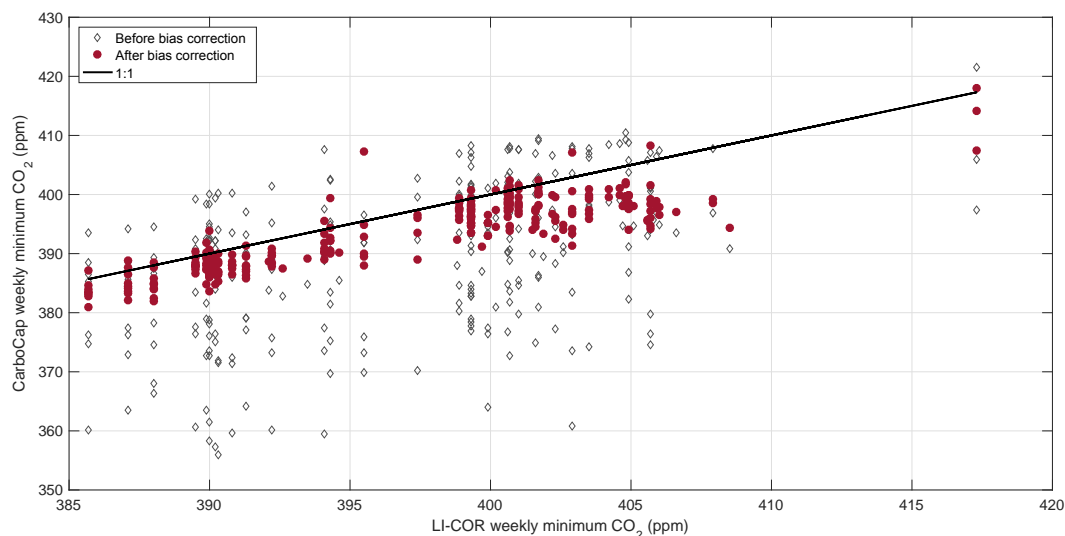


Figure 8. Weekly minimum CO₂ concentrations measured by a LI-COR LI-820 reference instrument compared with weekly minima calculated from the BEACO₂N data record before and after correction for systematic uncertainties.

Table 3. Results from drift- and bias-correction analysis at sites for which at least 3 months of observations are available for comparison with the ELC BEACO₂N node.

Site code	U_{temporal} (ppm day ⁻¹)	$U_{\text{atemporal}}$ (ppm)
BEL	0.03 ± 0.02	-3 ± 1
CPS	-0.014 ± 0.002	3.1 ± 0.5
FTK	0.02 ± 0.01	6.1 ± 0.8
HRS	-0.12 ± 0.01	1.2 ± 0.8
LAU	0.10 ± 0.01	-26.9 ± 0.8
KAI	0.04 ± 0.01 ; -0.08 ± 0.05	-23 ± 1 ; 6 ± 4
NOC	-0.11 ± 0.02 ; 0.030 ± 0.006	22 ± 1 ; -2.7 ± 0.7
PAP	-0.092 ± 0.005	8.7 ± 0.7
STL	-0.03 ± 0.01	9 ± 1

Once the $[\text{CO}_2]_{\text{background}}$ term is removed, effectively de-seasonalizing the observations, we re-calculate the weekly minima of this new data record and fit the result as a (piecewise, if necessary) linear function of time, the slope of which gives the value of U_{temporal} . This linear fit is then itself subtracted from the de-seasonalized data record, yielding a remainder comprised of only the $[\text{CO}_2]_{\text{local}}$ and $U_{\text{atemporal}}$ terms. While the $[\text{CO}_2]_{\text{local}}$ component varies rapidly, the contribution of $U_{\text{atemporal}}$ is, by definition, constant in time, so we once again compute the weekly minima of the new data record and define the mean weekly minimum as $U_{\text{atemporal}}$. Having obtained values for U_{temporal} and $U_{\text{atemporal}}$, we simply subtract these components from the original data record to generate the unbiased observations at each site.

Table 3 gives the results from one iteration of the correction procedure outlined above, executed using the ELC BEACO₂N node (see Fig. 1) as the reference site needed

to calculate $[\text{CO}_2]_{\text{background}}$. Only sites that enable at least 3 months of comparison to the ELC node are included; multiple values at a single site correspond to the piecewise linear fits employed when U_{temporal} exhibits discontinuities over the data record. Because we universally define Day 1 to be 1 January 2013 and $U_{\text{atemporal}}$ is strongly influenced by the intercept of the linear fit used to characterize the temporal drift, it should be noted that the magnitude of $U_{\text{atemporal}}$ does not necessarily represent the actual bias present at a node on its deployment date (which may be before or after 1 January 2013), but rather an extrapolation of this initial bias forwards or backwards in time. Uncertainties in U_{temporal} and $U_{\text{atemporal}}$ shown in Table 3 are calculated given ± 1.4 ppm random error in the 1 min averages, ± 2.9 ppm short-term drift, and ± 2 ppm agreement with the reference site's weekly minima, assumed to add in quadrature. Mapped onto the observations, these uncertainties result in a mean 1 min error of ± 4 ppm. This is the assumed cumulative error used in this study, although longer averaging times could be used to reduce this figure.

To evaluate the efficacy of this procedure, we compare the weekly minima of both the raw and corrected data records to the weekly minimum CO₂ concentrations measured by the aforementioned LI-COR LI-820. The results of said comparison are shown in Fig. 8, demonstrating significantly improved agreement (3.7 vs. 9.8 ppm mean residuals) with the LI-COR weekly minima after correction. This is likely a conservative estimate of the uncertainty reduction achievable with this method, as the ELC node we use to compute our $[\text{CO}_2]_{\text{background}}$ value is not itself an uncertainty-free reference. Although the raw ELC data record demonstrates the least systematic uncertainty of all the BEACO₂N nodes in an initial comparison with the LI-COR, its observations are

nonetheless afflicted by some unknown nonzero drift and/or atemporal bias. Direct in situ calibration of the reference instrument would allow us to constrain systematic uncertainties even further.

3.5 Performance of ancillary sensor technology

According to manufacturer documentation, the Sensirion SHT15 provides relative humidity measurements to 0.05 % resolution, with an advertised accuracy of ± 2.0 %, a repeatability of ± 0.1 %, an 8 s response time, and a long-term drift of < 0.5 % per year. Its temperature measurements are provided to 0.01 °C resolution, with an advertised accuracy of ± 0.3 °C, a precision of ± 0.1 °C, a response time of 5 to 30 s, and a long-term drift of < 0.04 °C per year. The Bosch Sensortec BMP180 provides pressure measurements to 0.01 hPa resolution, with an advertised accuracy of ± 0.12 hPa, a precision of ± 0.05 hPa, and a long-term drift of ± 1.0 hPa per year. Its temperature measurements are provided to 0.1 °C resolution, with an advertised accuracy of ± 1.0 °C. An independent verification of these performance specifications is not attempted here. However, the temperature observations from both sensors closely follow the structure of that detected by the internal temperature sensor of the CarboCap, although the CarboCap's readings are consistently slightly elevated, as expected given the heat produced by the instrument itself.

The BMP180 and SHT15 are not intended to reflect local meteorological conditions, but rather to provide a representative picture of conditions inside the node. These internal conditions are integral to various posterior corrections applied to the observations (see Sect. 2).

4 Initial field results

The BEACO₂N field campaign is a long-term, ongoing monitoring effort. Here we provide a time series of data collected from 16 BEACO₂N sites between January 2013 and April 2016 (Fig. 9) and some initial descriptive statistics of the drift- and bias-corrected dry air CO₂ mole fractions at nine representative sites in 2013 (Table 2).

Figure 9 demonstrates the volume and diversity of urban CO₂ concentrations sampled, exhibiting extreme short-term variability superimposed on a slower, seasonal fluctuation in the minimum values. For clarity, the bottom panels depicting month- and week-long samples of the overall time series show data from six representative sites. Network-wide, daytime (11:00–18:00 LT) means between 403 and 442 ppm are observed, with maximum values between 500 and 820 ppm and minima between 384 and 396 ppm. Standard deviations are seen to range from 9.57 to 22.4 ppm, all of which are lower than the corresponding nighttime (22:00–04:00 LT) standard deviations due to the reduced convective mixing in the shallow nocturnal boundary layer. Similarly, the majority of nighttime means and maxima exceed the daytime val-

ues at the same location, with the exception of four sites: ELC, FTK, LAU, and KAI. The dampened or inverted diurnal trends at these sites may be due to unique boundary layer dynamics at those locales or unusually large daytime CO₂ sources nearby. Daytime and nighttime minima do not differ as significantly.

Individual BEACO₂N nodes are observed to capture a number of patterns and cycles typical of ambient CO₂ monitoring. Figure 10 shows the monthly minimum CO₂ concentrations at six select sites in 2013, as the difference from their July value (defined as 0 ppm at each site). A distinct seasonal cycle is observed, with wintertime minima exceeding summertime values by 7 to 24 ppm. For reference, the gray curve presents a similar treatment of the aforementioned Pacific boundary curtain. At many sites, the BEACO₂N minima are seen to exhibit a seasonal variation of a magnitude roughly in keeping with that observed in the curtain, while other sites demonstrate a more exaggerated summer–winter contrast, as might be expected within an urban dome.

Figure 11 shows representative diurnal cycles in the drift- and bias-corrected CO₂ dry air mole fractions at three different BEACO₂N nodes in September 2013. We observe elevated concentrations at night corresponding to a shallow nocturnal boundary layer, significant enhancements around the morning rush hour when emissions are increasing faster than boundary layer height, and midday minima reflecting mixing into the largest volume of air before the boundary layer collapses again at sunset. However, within this qualitatively well understood average behavior remains a degree of intra-network variability that allows us to discover and probe local-scale phenomena of unknown origin. At FTK, for example, concentrations are seen to decrease after an initial rush hour peak ($\sim 08:00$ LT) but remain somewhat elevated until sunset, never achieving the much more pronounced afternoon minimum observed at PAP, 13.5 km away.

Such intra-city heterogeneities are difficult to capture accurately using atmospheric transport models alone. We simulate hourly CO₂ concentrations (\hat{y}) at each site in the network using the Stochastic Time-Inverted Lagrangian Transport model (STILT; Lin et al., 2003) coupled to the Weather Research and Forecasting model (WRF; Skamarock et al., 2008). The coupled model is known as “WRF-STILT” (Nehrkorn et al., 2010) and the setup used here follows that of Turner et al. (2016; see their Sect. S1 for details of the WRF setup). WRF-STILT advects an ensemble of 500 particles 3 days backwards in time, each with a small random perturbation, from the spatio-temporal locations of the BEACO₂N observations using the meteorological fields from WRF. The trajectories of these 500 particles are then used to construct footprints for each observation that represent the sensitivity of the observation to a perturbation in emissions from a given location. The footprints can be represented in matrix form (\mathbf{H}) and multiplied by a set of gridded emissions (\mathbf{x} , from the high-resolution bottom-up CO₂ inventory in Turner et al. 2016) to compute the CO₂ enhancement at each site due to

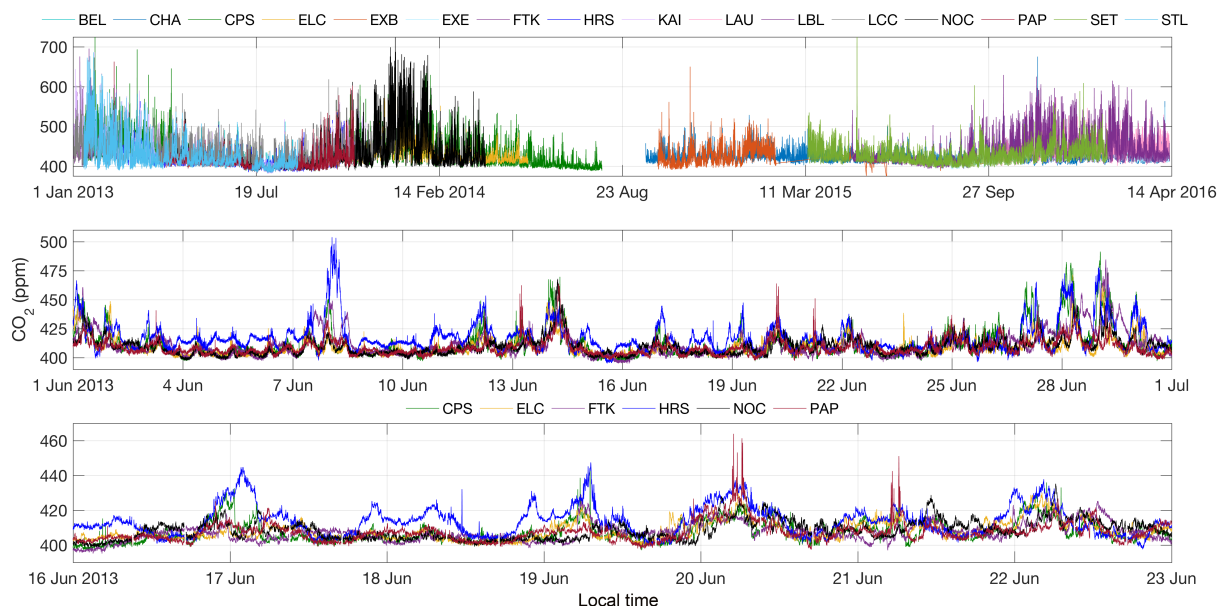


Figure 9. Time series of drift- and bias-corrected CO₂ dry air mole fractions collected over the course of ~2.5 years at 16 BEACO₂N sites (top), 1 month at six representative sites (middle), and 1 week at the same six sites (bottom). The hiatus around 23 August corresponds to a large-scale hardware refurbishment effort that began in mid-2014.

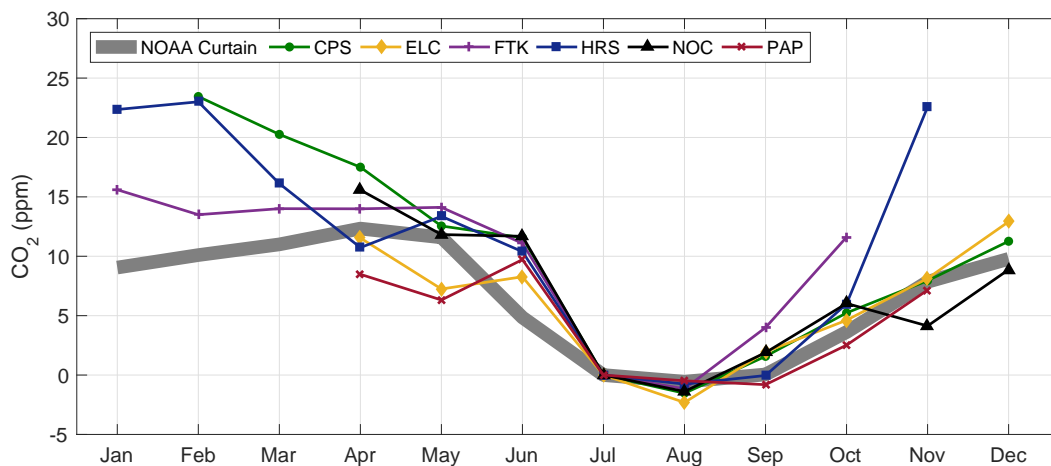


Figure 10. Monthly minimum drift- and bias-corrected CO₂ dry air mole fractions observed during 2013 at the same six BEACO₂N sites shown in the bottom panels of Fig. 9, plotted as the enhancement above the July value. Bold gray curve shows a similar treatment of the surface level Pacific Ocean empirical boundary curtain values for 38° N.

local emissions.

$$\Delta y = \mathbf{H}\mathbf{x} \quad (5)$$

We then add this local enhancement to a background concentration (y_B , from the aforementioned Pacific boundary curtain) to obtain a model estimate of the BEACO₂N observations shown as black squares in Fig. 11.

$$\hat{y} = \Delta y + y_B = \mathbf{H}\mathbf{x} + y_B \quad (6)$$

While the model captures midday conditions at NOC and evening levels at PAP, the presence of both over- and under-

estimations at other times suggests a need to re-examine the bottom-up emissions inventory as well as the model's treatment of boundary layer dynamics. BEACO₂N provides the ground truth necessary to identify such deficiencies and potentially improve upon them via inverse modeling, data assimilation, etc.

Comparison of diurnal cycles during noteworthy local scale emission events with averages such as those seen in Fig. 11 gives further insight into the potential application of BEACO₂N observations to CO₂ source attribution. Figure 12 offers one such comparison using hourly averages

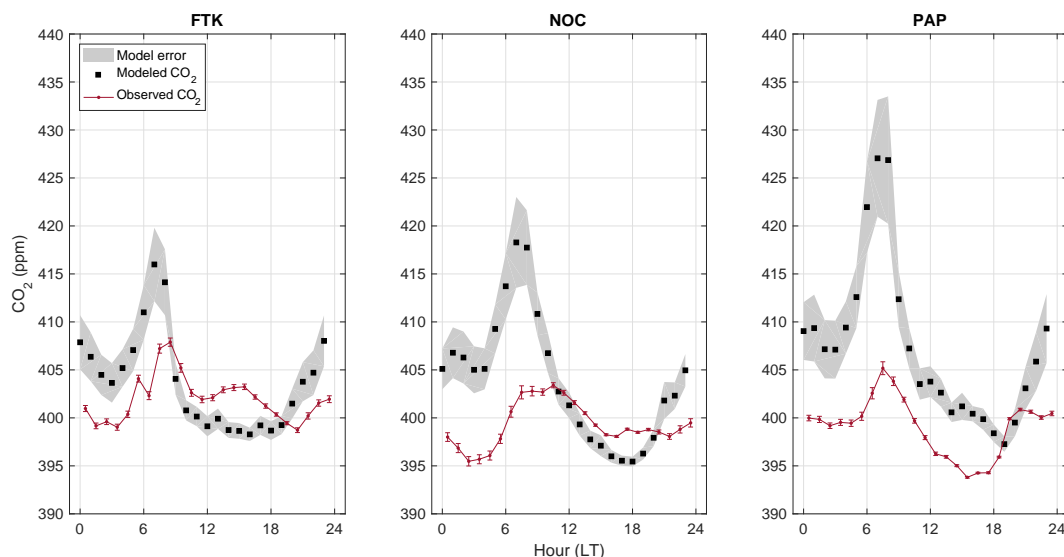


Figure 11. Diurnal variation in drift- and bias-corrected CO₂ dry air mole fractions observed and modeled at three representative BEACO₂N sites during September 2013. Error bars indicate the standard error of the mean (instrument error is negligible at this timescale); thick shaded curves indicate standard deviation.

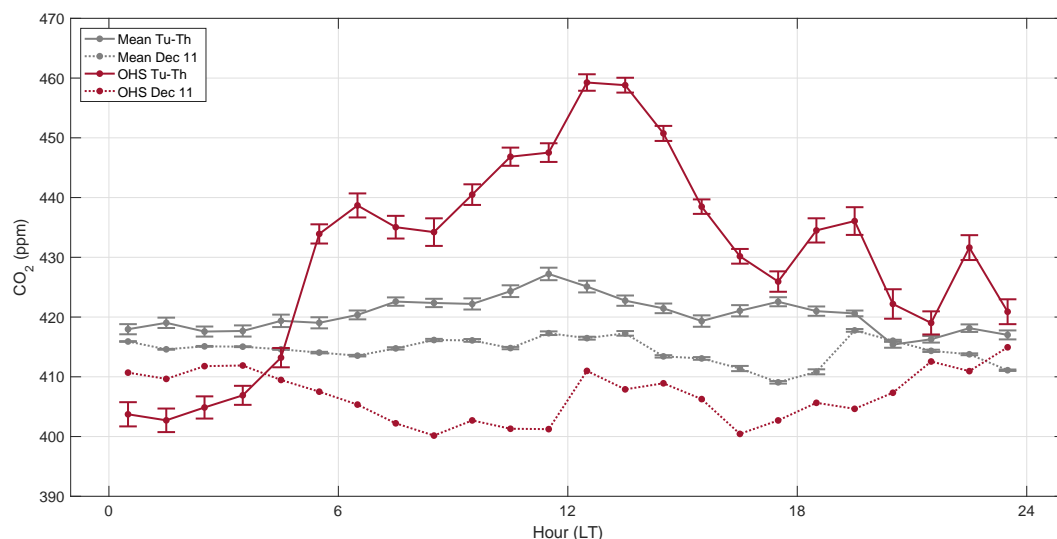


Figure 12. Comparison of diurnal variation in drift- and bias-corrected CO₂ dry air mole fractions observed at Oakland High School (OHS in Fig. 1) during a rain-related school closure on 11 December 2014 vs. the mean variation observed on other Tuesdays, Wednesdays, and Thursdays during December 2014 when the school was operating normally. Mean values from five other BEACO₂N sites operational during these time periods are also shown for reference. Error bars indicate standard error (instrument error is negligible at this timescale).

collected from a BEACO₂N node positioned on top of Oakland High School (OHS in Fig. 1 and Table 1) during a weather-related school closure that occurred on 11 December 2014. Clear reductions in CO₂ concentrations are observed relative to what is typical at this site (and indeed network-wide, although to a lesser extent), as is expected in the absence of emissions related to students' commutes and presence on campus. The sensing technology implemented in the BEACO₂N nodes therefore proves adequate to resolve not

only CO₂ patterns typical of an urban environment, but also short-term deviations during anomalous emission events, positioning BEACO₂N as an essential tool for the characterization of current urban conditions as well as the verification of subsequent emissions reductions.

5 Discussion and conclusions

We have described the design, implementation, and initial observations from a novel high-resolution CO₂ surface monitoring network instrument. We demonstrate that low-cost instrumentation enables an unprecedented level of spatial density, and describe a calibration protocol with post hoc corrections for systematic uncertainties that permits the network to operate precisely and reliably enough to characterize variations in ambient concentrations with magnitudes relevant to metropolitan life.

Our preliminary analysis of the first ~ 3 years of CO₂ observations provides evidence of the expected diurnal and seasonal cycles as well as an encouraging sensitivity to short-term changes in local emission events. Furthermore, we show significant qualitative and quantitative differences among the diurnal cycles at individual nodes on spatial scales that cannot yet be accurately captured by atmospheric transport models, confirming the necessity of a high-density approach when attempting to faithfully represent the variability of a complex urban environment.

Although BEACO₂N demonstrates sensitivity to both highly local fluctuations as well as slowly varying hemispheric cycles, how best to bootstrap the network's measurements into the analysis of intermediary mesoscale phenomena remains to be determined. Future work will focus on constructing inferred emissions patterns and trends at this scale from the body of observations. In an initial effort in this regard, Turner et al. (2016) constructed and applied a WRF–STILT inverse model to synthetic observations with density similar to BEACO₂N. For an area source the size of the Oakland metropolitan area, emissions were estimated to within 18 % accuracy; for a freeway-sized line source to within 36 %; and to within 60 % for the sum of six industrial point sources – consistently outperforming a smaller hypothetical network (three sites) with significantly better precision. Using week-long averages, the BEACO₂N-like network was able to further reduce the uncertainty in the integrated urban area source to < 2 %, a significant improvement over the citywide emissions estimates provided by real and proposed ~ 10 site sensor networks described by Lauvaux et al. (2016) (25 % uncertainty in five day averages), Kort et al. (2013) (> 10 % uncertainty in monthly averages), and Wu et al. (2016) (11 % uncertainty in monthly totals). These other studies use more conservative estimates of the combined instrument, model, and representativeness error (≥ 3 ppm, as opposed to ± 1 ppm). These combined error budgets are typically dominated by transport (model) error, which potentially explains why models based on BEACO₂N-like networks perform comparably to or better than those based on sparser networks of higher-quality sensors, for which instrument error may be reduced but accurately representing transport between observation sites is of greater importance. Further work is needed to fully assess the efficacy of inverse methods based on the BEACO₂N approach.

In addition, further characterization of the trace gas and particulate matter sensors will allow for more specific source attribution via the exploitation of emissions factors unique to various combustion activities (e.g., Ban-Weiss et al., 2008; Harley et al., 2015), while providing public-health-relevant air quality information as well. There is also potential for fine-grained verification of space-based observations or even of personal sensors when their inherent mobility brings them within the geographical area well represented by the fixed BEACO₂N network.

This work constitutes a promising initial infrastructure upon which further advances in high-density atmospheric monitoring can be built, capable of providing research, regulatory, and layperson communities with greenhouse gas and air toxics information on the scale at which emissions and personal exposure actually occur. We are currently planning to expand this validated pilot network into the neighboring locales of San Francisco and Richmond, California, allowing us to characterize other emissions sources, such as oil refining facilities. These efforts will be complemented by modeling studies comparing different sampling resolutions (i.e., 2 km vs. 4 km sensor spacing) and spatial configurations, yielding general network optimization principles that will facilitate future implementations of high-resolution CO₂ monitoring networks in diverse locations.

6 Data availability

The BEACO₂N data used in this study and all subsequently collected data are available in near real time on the BEACO₂N website: <http://beacon.berkeley.edu/Sites.aspx>.

Acknowledgements. This work was funded by the National Science Foundation (1035050; 1038191), the National Aeronautics and Aerospace Administration (NAS2-03144), and the Bay Area Air Quality Management District (2013.145). Additional support was provided by a NSF Graduate Research Fellowship to Alexis A. Shusterman, a Department of Energy Computational Science Graduate Fellowship to Alexander J. Turner, a Kwanjeong Lee Chonghwan Educational Fellowship to Jinsol Kim, and the UC Berkeley Miller Institute to Ronald C. Cohen. We acknowledge the use of data sets maintained by NOAA's Integrated Surface Database, Pacific Marine Environmental Laboratory, and Global Greenhouse Gas Reference Network. We thank UC Berkeley Research Computing for access to computation resources, Sebastien C. Biraud for facilitating inter-comparisons with the Picarro G3201, as well as David M. Holstius and Holly L. Maness for their generous contributions to BEACO₂N's code base.

Edited by: N. Harris

Reviewed by: two anonymous referees

References

- A.B. 32: California Global Warming Solutions Act, Assemb. Reg. Sess. 2005–2006, CA, 2006.
- Andrews, A. E., Kofler, J. D., Trudeau, M. E., Williams, J. C., Neff, D. H., Masarie, K. A., Chao, D. Y., Kitzis, D. R., Novelli, P. C., Zhao, C. L., Dlugokencky, E. J., Lang, P. M., Crotwell, M. J., Fischer, M. L., Parker, M. J., Lee, J. T., Baumann, D. D., Desai, A. R., Stanier, C. O., De Wekker, S. F. J., Wolfe, D. E., Munger, J. W., and Tans, P. P.: CO₂, CO, and CH₄ measurements from tall towers in the NOAA Earth System Research Laboratory's Global Greenhouse Gas Reference Network: instrumentation, uncertainty analysis, and recommendations for future high-accuracy greenhouse gas monitoring efforts, *Atmos. Meas. Tech.*, 7, 647–687, doi:10.5194/amt-7-647-2014, 2014.
- Ban-Weiss, G. A., McLaughlin, J. P., Harley, R. A., Lunden, M. M., Kirchstetter, T. W., Kean, A. J., Strawa, A. W., Stevenson, E. D., and Kendall, G. R.: Long-term changes in emissions of nitrogen oxides and particulate matter from on-road gasoline and diesel vehicles, *Atmos. Environ.*, 42, 220–232, doi:10.1016/j.atmosenv.2007.09.049, 2008.
- Beckerman, B., Jerrett, M., Brook, J. R., Verma, D. K., Arain, M. A., and Finkelstein, M. M.: Correlation of nitrogen dioxide with other traffic pollutants near a major expressway, *Atmos. Environ.*, 42, 275–290, doi:10.1016/j.atmosenv.2007.09.042, 2008.
- Bréon, F. M., Broquet, G., Puygrenier, V., Chevallier, F., Xueref-Remy, I., Ramonet, M., Dieudonné, E., Lopez, M., Schmidt, M., Perrussel, O., and Ciais, P.: An attempt at estimating Paris area CO₂ emissions from atmospheric concentration measurements, *Atmos. Chem. Phys.*, 15, 1707–1724, doi:10.5194/acp-15-1707-2015, 2015.
- Brown Jr., E. G., Rodriguez, M., Nichols, M. D., and Corey, R. W.: First Update to the Climate Change Scoping Plan: Building on the Framework, California Air Resources Board, Sacramento, CA, 2014.
- Burrows, J. P., Hölzle, E., Goede, A. P. H., Visser, H., and Fricke, W.: SCHIAMACY—scanning imaging absorption spectrometer for atmospheric chartography, *Acta Astronaut.*, 35, 445–451, doi:10.1016/0094-5765(94)00278-T, 1995.
- Choi, W., Winer, A. M., and Paulson, S. E.: Factors controlling pollutant plume length downwind of major roadways in nocturnal surface inversions, *Atmos. Chem. Phys.*, 14, 6925–6940, doi:10.5194/acp-14-6925-2014, 2014.
- Duren, R. M. and Miller, C. E.: Measuring the carbon emissions of megacities, *Nature Climate Change*, 2, 560–562, doi:10.1038/nclimate1629, 2012.
- Ehleringer, J., Schauer, A. J., Lai, C.-T., Bowling, D. R., Pataki, D. E., and Stephens, B. B.: Long-term carbon dioxide monitoring in Salt Lake City, AGU Fall Meeting, San Francisco, CA, 15–19 December 2008, B43D-0466, 2008.
- Eldering, A., Solish, B., Kahn, P., Boland, S., Crisp, D., and Gunson, M.: High precision atmospheric CO₂ measurements from space: The design and implementation of OCO-2, in: Aerospace Conference, 2012 IEEE, Big Sky, MT, 3–10 March 2012, 1–10, doi:10.1109/AERO.2012.6187176, 2012.
- Harley, R. A., Marr, L. C., Lehner, J. K., and Giddings, S. N.: Changes in motor vehicle emissions on diurnal to decadal time scales and effect on atmospheric composition, *Environ. Sci. Technol.*, 39, 5356–5362, doi:10.1021/es048172+, 2005.
- Jeong, S., Hsu, Y.-K., Andrews, A. E., Bianco, L., Vaca, P., Wilczak, J. M., and Fischer, M. L.: A multitower measurement network estimate of California's methane emissions, *J. Geophys. Res.-Atmos.*, 118, 11339–11351, doi:10.1002/jgrd.50854, 2013.
- Kort, E. A., Angevine, W. M., Duren, R., and Miller, C. E.: Surface observations for monitoring urban fossil fuel CO₂ emissions: minimum requirements for the Los Angeles Megacity: *J. Geophys. Res.-Atmos.*, 118, 1–8, doi:10.1002/jgrd.50135, 2013.
- Lauvaux, T., Miles, N. T., Deng, A., Richardson, S. J., Cambaliza, M. O., Davis, K. J., Gaudet, B., Gurney, K. R., Huang, J., O'Keefe, D., Song, Y., Karion, A., Tomohiro, O., Patarasuk, R., Razlivanov, I., Sarmiento, D., Shepson, P., Sweeney, C., Turnbull, J., and Wu, K.: High-resolution atmospheric inversion of urban CO₂ emissions during the dormant season of the Indianapolis Flux Experiment (INFLUX), *J. Geophys. Res.-Atmos.*, 121, 5213–5236, doi:10.1002/2015JD024473, 2016.
- Lin, J. C., Gerbig, C., Wofsy, S. C., Andrews, A. E., Daube, B. C., Davis, K. J., and Grainger, C. A.: A near-field tool for simulating the upstream influence of atmospheric observations: The Stochastic Time-Inverted Lagrangian Transport (STILT) model, *J. Geophys. Res.*, 108, ACH 2-1–ACH 2-13, doi:10.1029/2002JD003161, 2003.
- McKain, K., Wofsy, S. C., Nehr Korn, T., Eluszkiewicz, J., Ehleringer, J. R., and Stephens, B. B.: Assessment of ground-based atmospheric observations for verification of greenhouse gas emissions from an urban region, *P. Natl. Acad. Sci. USA.*, 109, 8423–8428, doi:10.1073/pnas.1116645109, 2012.
- Nehr Korn, T., Eluszkiewicz, J., Wofsy, S. C., Lin, J. C., Gerbig, C., Longo, M., and Freitas, S.: Coupled weather research and forecasting—stochastic time-inverted lagrangian transport (WRF-STILT) model, *Meteorol. Atmos. Phys.*, 107, 51–64, doi:10.1007/s00703-010-0068-x, 2010.
- Pacala, S. W., Breidenich, C., Brewer, P. G., Fung, I., Gunson, M. R., Heddle, G., Law, B., Marland, G., Paustian, K., Prather, M., Randerson, J. T., Tans, P., and Wofsy, S. C.: Verifying Greenhouse Gas Emissions: Methods to Support International Climate Agreements, The National Academies Press, Washington, D. C., 2010.
- Rigby, M., Toumi, R., Fisher, R., Lowry, D., and Nisbet, E. G.: First continuous measurements of CO₂ mixing ratio in central London using a compact diffusion probe, *Atmos. Environ.*, 42, 8943–8953, doi:10.1016/j.atmosenv.2008.06.040, 2008.
- Seinfeld, J. H. and Pandis, S. N.: *Atmospheric Chemistry and Physics: From Air Pollution to Climate Change*, 2nd Ed.n, John Wiley & Sons Inc., Hoboken, NJ, 2006.
- Skamarock, W. C., Klemp, J. B., Dudhia, J., Gill, D. O., Barker, D. M., Duda, M. G., Huang, X.-Y., Wang, W., and Powers, J. G.: A Description of the Advanced Research WRF Version 3, National Center for Atmospheric Research, Boulder, CO, 2008.
- Thompson, R. L., Manning, A. C., Gloor, E., Schultz, U., Seifert, T., Hänsel, F., Jordan, A., and Heimann, M.: In-situ measurements of oxygen, carbon monoxide and greenhouse gases from Ochsenkopf tall tower in Germany, *Atmos. Meas. Tech.*, 2, 573–591, doi:10.5194/amt-2-573-2009, 2009.
- Turnbull, J. C., Sweeney, C., Karion, A., Newberger, T., Lehman, S. J., Tans, P. P., Davis, K. J., Lauvaux, T., Miles, N. L., Richardson, S. J., Cambaliza, M. O., Shepson, P. B., Gurney, K., Patarasuk, R., and Razlivanov, I.: Toward quantification and source sector identification of fossil fuel CO₂ emissions from an urban

- area: Results from the INFLUX experiment, *J. Geophys. Res.-Atmos.*, 120, 292–312, doi:10.1002/2014JD022555, 2015.
- Turner, A. J., Shusterman, A. A., McDonald, B. C., Teige, V., Harley, R. A., and Cohen, R. C.: Network design for quantifying urban CO₂ emissions: Assessing trade-offs between precision and network density, *Atmos. Chem. Phys. Discuss.*, doi:10.5194/acp-2016-355, in review, 2016.
- United Nations: Department of Economic and Social Affairs, Population Division: World Urbanization Prospects: The 2014 Revision, Highlights, 2014.
- United Nations: Framework Convention on Climate Change Intended Nationally Determined Contributions: http://unfccc.int/focus/indc_portal/items/8766.php/, last access: 4 June 2016, 2015.
- van Leeuwen, C.: Improved operation of the Vaisala Carbocap GMP343 for the school CO₂-web, Manuscript in preparation, 2010.
- Worthy, D. E. J., Platt, A., Kessler, R., Ernst, M., Braga, R., and Racki, S.: The Canadian atmospheric carbon dioxide measurement program: measurement procedures, data quality and accuracy, in: Report of the 11th WMO/IAEA Meeting of Experts on Carbon Dioxide Concentration and Related Tracer Measurement Techniques, Tokyo, Japan, 25–28 September 2001, 112–128, 2003.
- Wu, L., Broquet, G., Ciais, P., Bellassen, V., Vogel, F., Chevalier, F., Xueref-Remy, I., and Wang, Y.: What would dense atmospheric observation networks bring to the quantification of city CO₂ emissions?, *Atmos. Chem. Phys.*, 16, 7743–7771, doi:10.5194/acp-16-7743-2016, 2016.
- Yokota, T., Yoshida, Y., Eguchi, N., Ota, Y., Tanaka, T., Watanabe, H., and Maksyutov, S.: Global concentrations of CO₂ and CH₄ retrieved from GOSAT: first preliminary results, *Sola*, 5, 160–163, doi:10.2151/sola/2009-041, 2009.
- Zhu, Y., Kuhn, T., Mayo, P., and Hinds, W. C.: Comparison of daytime and nighttime concentration profiles and size distributions of ultrafine particles near a major highway, *Environ. Sci. Technol.*, 40, 2531–2536, doi:10.1021/es0516514, 2006.