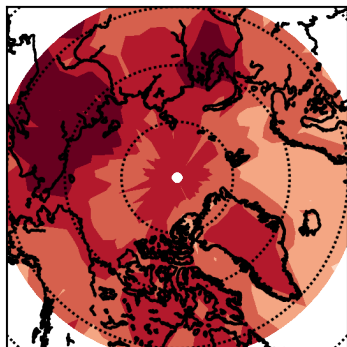
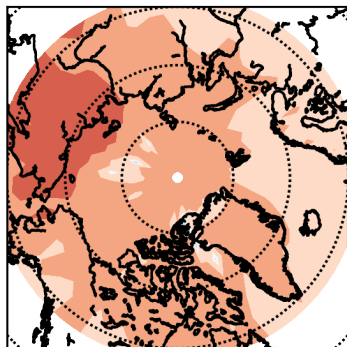


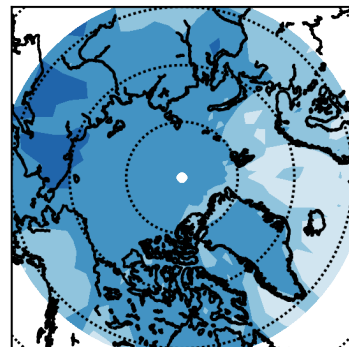
(a) fBC-external



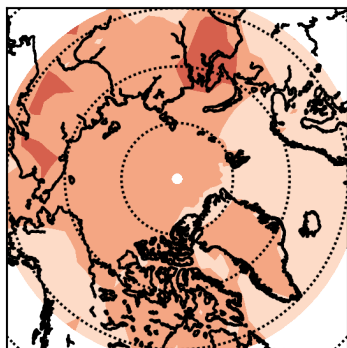
(b) fBC-external*1.5



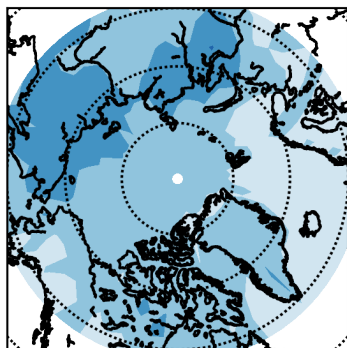
(c) fBC-allCoreShell



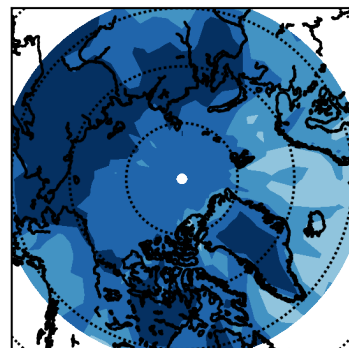
(d) r_{shell} -external



(e) r_{shell} -external*1.5



(f) r_{shell} -allCoreShell



-0.40 -0.30 -0.20 -0.10 -0.05 -0.01 0.01 0.05 0.10 0.20 0.30 0.40

$W m^{-2}$