



Multi-species inversion and IAGOS airborne data for a better constraint of continental-scale fluxes

Fabio Boschetti¹, Valerie Thouret², Greet Janssens Maenhout³, Kai Uwe Totsche⁴, Julia Marshall¹, and Christoph Gerbig¹

¹Department Biogeochemical Systems, Max Plank Institute for Biogeochemistry, Jena, 07745, Germany

²Laboratoire d'Aerologie, CNRS and Universite' Paul Sabatier, Toulouse, 31400, France

³European Commission Joint Research Centre, Institute for Environment and Sustainability, Ispra, 21027, Italy

⁴Friedrich Schiller University, Jena, 07743, Germany

Correspondence: Christoph Gerbig (cgerbig@bgc-jena.mpg.de)

Received: 26 January 2017 – Discussion started: 1 March 2017

Revised: 11 January 2018 – Accepted: 15 April 2018 – Published: 3 July 2018

Abstract. Airborne measurements of CO₂, CO, and CH₄ proposed in the context of IAGOS (In-service Aircraft for a Global Observing System) will provide profiles from take-off and landing of airliners in the vicinity of major metropolitan areas useful for constraining sources and sinks. A proposed improvement of the top-down method to constrain sources and sinks is the use of a multispecies inversion. Different species such as CO₂ and CO have partially overlapping emission patterns for given fuel-combustion-related sectors, and thus share part of the uncertainties related both to the a priori knowledge of emissions and to model–data mismatch error. We use a regional modelling framework consisting of the Lagrangian particle dispersion model STILT (Stochastic Time-Inverted Lagrangian Transport) combined with the high-resolution (10 km × 10 km) EDGARv4.3 (Emission Database for Global Atmospheric Research) emission inventory, differentiated by emission sector and fuel type for CO₂, CO, and CH₄, and combined with the VPRM (Vegetation Photosynthesis and Respiration Model) for biospheric fluxes of CO₂. Applying the modelling framework to synthetic IAGOS profile observations, we evaluate the benefits of using correlations between different species' uncertainties on the performance of the atmospheric inversion. The available IAGOS CO observations are used to validate the modelling framework. Prior uncertainty values are conservatively assumed to be 20 %, for CO₂ and 50 % for CO and CH₄, while those for GEE (gross ecosystem exchange) and respiration are derived from existing literature. Uncertainty reduction for different species is evaluated in a domain encircling 50 % of

the profile observations' surface influence over Europe. We found that our modelling framework reproduces the CO observations with an average correlation of 0.56, but simulates lower mixing ratios by a factor of 2.8, reflecting a low bias in the emission inventory. Mean uncertainty reduction achieved for CO₂ fossil fuel emissions is roughly 38 %; for photosynthesis and respiration flux it is 41 and 44 % respectively. For CO and CH₄ the uncertainty reduction is roughly 63 and 67 % respectively. Considering correlation between different species, posterior uncertainty can be reduced by up to 23 %; such a reduction depends on the assumed error structure of the prior and on the considered time frame. The study suggests a significant uncertainty constraint on regional emissions using multi-species inversions of IAGOS in situ observations.

1 Introduction

As widely recognized at the international level, there is a need for reduction in anthropogenic emissions (IPCC, 2014). This however implies the necessity for reliable climate predictions from atmospheric models in order to allow policy-makers to make informed decisions. Unfortunately, current climate predictions are hampered by excessive uncertainties; for example intercomparisons of different models show important differences in their predictions as shown in Friedlingstein et al. (2006). This makes it difficult to assess the better environmental policies to implement. Because most biogenic

fluxes in Europe are influenced by human activities, with 22 % of Europe's land dedicated to agriculture (FAO, 2013) and 45 % covered by forests, of which 80 % is managed for wood supply (UNECE, FAO, 2011), understanding and managing these biogenic fluxes must also be a component of any policy to reduce anthropogenic emissions.

A commonly used approach to estimate carbon budgets by teasing apart sources and sinks in a given spatial domain is the atmospheric Bayesian inversion. Atmospheric inversions combine prior knowledge from emission inventories with atmospheric observations acting as a top-down constraint to produce better posterior knowledge. As the main goal of this study is to assess the benefit of inter-species correlations in reducing the uncertainty of the posterior state space, we are particularly interested in the effects of such correlations on the uncertainty reduction, defined as the difference between prior and posterior uncertainty normalized by the prior. The vast majority of published papers on atmospheric inversions investigate the budget of a single species, usually a long-lived greenhouse gas like CO₂ (e.g. Rödenbeck et al., 2003) or CH₄ (e.g. Hein et al., 1997; Bousquet et al., 2006), but the technique can also be applied to active species like CO (Bergamaschi et al., 2000). Note that carbon dioxide is a special case as atmospheric CO₂ mixing ratios result from a combination of strong anthropogenic sources with strong sources and sinks from biospheric processes, calling for a separation of anthropogenic fluxes from biospheric fluxes. One way to achieve such a separation is to measure CO alongside CO₂, and use CO as a proxy for CO₂ anthropogenic emissions. Several studies have made use of the correlations among different species. One of the first examples is the work from Enting et al. (1995) on CO₂ and ¹³CO₂, while Brioude et al. (2012) attempted to derive a CO₂ emission inventory without a prior emission estimate, instead using inventories of CO, NO_y, and SO₂. Similarly, Peischl et al. (2013) made use of CO and CO₂ inventories to help quantifying sources of CH₄ in the Los Angeles basin. The ability to measure multiple species has proved useful, also in remote sensing. For example, Pandey et al. (2015) made use of simultaneously retrieved CO₂ and CH₄ total column to reduce scattering effect. Further examples of studies making use of co-emitted species can be found in atmospheric chemistry (Konovalov et al., 2014; Berezin et al., 2013; Pison et al., 2009). More focused on exploiting inter-species correlation to reduce uncertainty in Bayesian inversion, Palmer et al. (2006) made use of CO₂–CO correlations to improve inversion using data from the TRACE-P aircraft mission, while Wang et al. (2009) employed a similar method using satellite data, obtaining a reduction in the flux error of a CO₂ inversion.

So far the lion's share of the studies investigating atmospheric inversions make use of both continuous in situ and flask measurements from ground-based observational networks of tall towers (e.g. Kadygrov et al., 2015; Sasakawa et al., 2010). However, as profiles collected from aircraft easily

exceed the height of towers, airborne data may also offer an interesting option. This alternative was tested in some recent studies that made use of aircraft profiles alone or in combination with other data sources (e.g. Brioude et al., 2013; Gourdji et al., 2012). Methods to maximize the cost-effectiveness of airborne data are the use of unmanned aircraft (drones) and commercial airliners. The latter, in particular, allow for collecting data on a regular basis without requiring a particularly small or light sensor. The most important projects making use of commercial airliners are CONTRAIL (Comprehensive Observation Network for Trace Gases; Machida et al., 2008) and MOZAIC/IAGOS (Measurements of Ozone and water vapour by in-service Airbus aircraft/In-service Aircraft for a Global Observing System; Marenco et al., 1998; Petzold et al., 2015). Both projects have been running for more than 2 decades and have produced extensive datasets that have proven to be important in the fields of atmospheric modelling and satellite calibration and validation (Zbinden et al., 2013; Sawa et al., 2012). Regarding carbonaceous species, CONTRAIL has so far collected CO₂ mixing ratio measurement, while IAGOS is focused on CO. In the next years the IAGOS fleet will simultaneously provide CO, CO₂, and CH₄ atmospheric concentration measurements (Filges et al., 2015), enabling the use of multi-species synergy in modelling applications. This synergy follows the fact that the collocated measurements share the same atmospheric transport and have partially correlated emission uncertainties.

This paper is focused on investigating the benefits of such a multi-species inversion on uncertainty reduction in comparison with a single-species inversion. To achieve this goal, we set up a synthetic experiment utilizing the measurement times and locations collected from the IAGOS projects in the year 2011. The present paper is intended to pave the way for future studies making use of multi-species IAGOS datasets when they become available. A receptor-oriented framework was set up to derive flux interactions between the atmosphere and the biosphere using IAGOS data. The modelling framework is composed of a Lagrangian particle dispersion model (LPDM, specifically the STILT model), a diagnostic biosphere–atmosphere exchange model (the VPRM model), gridded emission inventories, global tracer transport model output that provides the tracer boundary conditions for the regional domain, and a Bayesian inversion scheme. The present work is based on the modelling framework used in Boschetti et al. (2015) and builds upon that by adding other species, and using a formal Bayesian inversion. A multi-species inversion was carried out in order to exploit the correlations in uncertainties between CO₂, CO, and CH₄, specifically in their respective uncertainties in a priori anthropogenic emissions and in model representation error. The aim of this multi-species inversion is to provide better estimates of anthropogenic emissions, and, in the case of CO₂, to better separate the biospheric from anthropogenic contributions. This paper is structured as follows: a short description of the different components of the modelling framework is given in Sect. 2;

in Sect. 3 we present and discuss our results; Sect. 4 gives the conclusions.

2 Material and methods

2.1 Modelling framework

Before describing the different models composing the modelling framework, we introduce some specific terminology to reduce ambiguity in Sect. 2.1.1–2.1.6. Quantities that can be observed are termed “species” or “trace gases”, corresponding in this case to total CO₂, CO, and CH₄. These three species are simulated using five “modelled species”, namely CO₂ from fossil fuels, CO₂ related to GEE (gross ecosystem exchange), CO₂ related to respiration, CO, and CH₄. Modelled species related to anthropogenic emissions are modelled as the sum of contributions from different “emission sectors” (Table 1) and “fuel types” (Table 2); for further differentiation, anthropogenic and biospheric contributions are split into monthly contributions. Simulated fluxes specific for different modelled species, emission sectors, fuel types, and months of the year are called “flux categories”. In this section, a brief description of the different models that make up the modelling framework is given. For more detailed information, see Boschetti et al. (2015).

2.1.1 Vertical profile input data

In this study the modelled profiles have identical structure to those collected from the IAGOS fleet of commercial airliners. More precisely, the spatial and temporal coordinates of different observations will be used as input for the modelling framework, whereas the observed values of atmospheric mixing ratios of CO and meteorological parameters themselves will play a role in calibrating the modelling framework.

Central for this work is the concept of the mixed layer (ML), the lower part of the troposphere in which trace gases are well mixed due to turbulent convection in the timescale of an hour or less, and in which the effect of regional surface–atmosphere fluxes is the strongest. As input to the inversion we use the enhancement of the species’ mixing ratio within the mixed layer relative to that in the free troposphere (FT), similar to the approach described in Boschetti et al. (2015). This mixed layer enhancement best reflects the influence of regional fluxes. To compute this, we take the average mixing ratio within the mixed layer and subtract the value taken at 2 km above the mixed layer top (z_i), i.e. well within the free troposphere. The z_i is a very important parameter in atmospheric modelling, and accounts for most of the transport uncertainty in the vertical domain. In fact, when assuming that the mixed layer is the part of the troposphere in which trace gases are well mixed due to turbulent convection, given a certain amount of trace gas in the ML, its mixing ratio will depend strongly on its depth z_i . More precisely, even if the model has correctly reproduced the amount of trace gas in

the real mixed layer, if the modelled z_i is lower (higher) than the actual one, then the simulated ML mixing ratio will be higher (lower) than it actually should be. In the present study, modelled z_i is corrected according to Boschetti et al. (2015, Sect. 2.2.1)

2.1.2 Transport–flux coupling

The modelling framework is composed of a regional transport model (STILT), the EDGAR (Emission Database for Global Atmospheric Research) emission inventory to model anthropogenic emissions, VPRM (Vegetation Photosynthesis and Respiration Model) to model emissions from the biosphere, and output from global transport models for lateral boundary conditions for the different modelled species. The expressions “anthropogenic emissions” and “fossil fuel emissions” are considered synonymous in this paper and are used to indicate the sum of fossil fuel and biofuel emissions, without including contributions from LULUCF (Land Use, Land-Use Change and Forestry).

For regional transport we make use of the LPDM STILT (Stochastic Time-Inverted Lagrangian Transport; Lin et al., 2003) to derive the sensitivity of the atmospheric mixing ratio measurement to upstream surface–atmosphere fluxes, so-called “footprints”. Briefly, for each measurement location and time (also called receptor point), the model releases an ensemble of virtual particles that are driven back in time using wind fields from ECMWF and turbulence as stochastic process; the residence time within the lower half of the mixed layer is used to determine the potential contribution from surface fluxes, and the cumulative sum of these contributions determines the footprint that identifies the part of the domain with a certain influence on a single receptor point. To represent the mixed layer enhancements, the footprints for receptors within the boundary layer are averaged, and the footprint for the free tropospheric receptor is subtracted from this, resulting in a footprint for the mixed layer enhancements. This footprint is then matrix-multiplied with an emission map from an emission inventory, resulting in a simulated mixing ratio enhancement corresponding to the regional contribution at the measurement location.

A detailed description of STILT is given in Lin et al. (2003) and Gerbig et al. (2003). We use STILT coupled with emission models for both anthropogenic (EDGAR) and biosphere (VPRM) fluxes on a regional domain that covers most of Europe (33 to 72° N, –15 to 35° E) with a spatial resolution of 1/8° for latitude and 1/12° for longitude, roughly corresponding to 10 km. The MACC reanalysis (Inness et al., 2013, downloaded from <http://www.ecmwf.int>, last access: 23 June 2016) was used for lateral boundary conditions for CO mixing ratios, whereas for CO₂ and CH₄ we used output from the Jena CarboScope (Rödenbeck et al., 2003; CO₂ data available from www.bgc-jena.mpg.de/CarboScope/, last access: 10 February 2016), which are based on forward simulations of global-inversion optimized fluxes with the TM3

Table 1. Specific emission sectors accounted for in the state vector and aggregated categories as used in Fig. 8.

	Adj IPCC	Description	Aggregated
1	1a1a	power generation	energy
2	1a1bcr	other transformation non-energy use	energy
3	1b1	solid fuel production	energy
4	1b2abc	gas flaring	energy
5	1b2ac	oil prod., distribution, and flaring	energy
6	1b2b	gas production and distribution	energy
7	1a3a+1c1	international and domestic aviation	transport
8	1a3b	road transport	transport
9	1a3ce	non-road ground transport	transport
10	1a3d+1c2	inland waterways and shipping	transport
11	1a2+6cd	industrial combustion (non-power)	industry
12	2a	cement and lime production	industry
13	2befg + 3	chemical industry and solvents	industry
14	2c	metal industry emission	industry
15	1a4	buildings	buildings
16	4a	enteric fermentation in agriculture	agriculture
17	4b	manure management	agriculture
18	4c	rice cultivation	agriculture
19	4f	agricultural waste burning	agriculture
20	6a	solid waste disposal in landfills	waste
21	6b	wastewater treatment	waste
22	7a	fossil fuel fires	FF_fuels

Table 2. Specific fuel types accounted for in the state vector and aggregated categories as used in Fig. 8.

	Fuel type	Aggregated fuel type
1	brown coal	coal
2	hard coal	coal
3	peat	coal
4	gas derivatives	gas
5	natural gas	gas
6	heavy oil	oil
7	light oil	oil
8	solid waste	waste
9	venting and flaring	oil
10	other*	other
11	gas biofuels	bio
12	liquid biofuels	bio
13	solid biofuels	bio

* The category “other” is derived by summing the contribution from those processes in which it is difficult to establish the specific fuel responsible for the emissions.

transport model (Heimann and Körner, 2003). TM3 fields have lower resolution, but they are chosen for their consistency with measurements from the ground-based network. In addition, spatial resolution is of relatively minor importance for the contribution from the lateral boundary as it is far away from the measurement locations.

For fossil fuel emissions, we use a model based on the EDGAR v4.3.1 emission inventory (European Commission, 2016) modified following the same approach taken for COF-FEE (CO₂ release and Oxygen uptake from Fossil Fuel Emission Estimate; Steinbach et al., 2011; Vardag et al., 2015). More precisely, to obtain hourly resolved emissions from the original EDGAR annual fluxes for different emission categories we add specific temporal activity factors (Denier van der Gon et al., 2011) to account for differences in emissions due to seasonal, weekly, and daily cycles. In addition, the different emission categories are further split into contributions from different fuel types from British Petroleum’s Statistical Review of World Energy 2014 (BP, 2014). The World Energy Outlook from IEA as alternative source of information was not chosen, as the report from BP was available earlier (April 2015 vs. November of the following year). This allows for taking into account changes in emissions between different years. Such an emission model provides hourly resolved fluxes for each fossil fuel flux category with a spatial resolution of roughly 10 km on our regional European domain. For each of the three anthropogenic modelled species (CO₂, CO, and CH₄), different emission maps are used as input. Temporal profiles are then applied to these sector- and fuel-specific emission maps. To also take into account the contribution from the biosphere we use VPRM. VPRM simulates realistic patterns at small spatial (10 km × 10 km) and temporal (hourly) scales and is used here to provide the a priori fluxes for biosphere–atmosphere exchange of CO₂. This model is described in detail in Mahadevan et al. (2008).

STILT transport is driven by meteorological fields from the ECMWF IFS (12 h forecasts twice daily at 3-hourly temporal resolution), which have a spatial resolution of 0.25° with 61 vertical levels. In the following, we will refer to the STILT/EDGAR/VPRM/MACC/TM3 combination of transport, simulated fluxes and advected boundary conditions as merely “STILT” for simplicity.

2.1.3 Bayesian inversion

Atmospheric inversions provide an estimate of the distribution of sources and sinks over the domain’s surface from available concentration measurements (top-down approach). This can be formalized in the following linear relation:

$$\mathbf{y} = \mathbf{K}\boldsymbol{\lambda} + \boldsymbol{\varepsilon}, \quad (1)$$

where the \mathbf{y} vector contains the n observations, and \mathbf{K} is the Jacobian matrix that relates the observations with the state vector $\boldsymbol{\lambda}$. In the present study the focus will be on surface–atmosphere gas exchanges due to biospheric processes and anthropogenic emissions. So the observations are trace gas mixing ratios at different times and locations, \mathbf{K} is the product of a transport operator \mathbf{H} that maps flux sensitivities at different times and locations with a set of gridded fluxes \mathbf{F} for the categories of interest, while the state vector $\boldsymbol{\lambda}$ contains the m scaling factors for the flux categories of interest. \mathbf{H} has n rows and a number of columns equal to $h = N_x \times N_y \times N_t \times N_s$ respectively the number of pixels in the emission model along the x and y axes, the number of (hourly) simulations in the whole year of interest, and the number of state vector elements, resulting in a huge matrix. As the matrix \mathbf{F} describes the different simulated gridded fluxes, it is comparably large and has h rows and m columns. By considering \mathbf{K} as the result of the product of these two large matrices, it is possible to limit its dimensions to only n rows and m columns; this allows for simplifying the critical task of relating observation with simulated fluxes of the categories of interest. The state vector accounts for specific emission sectors (Table 1) and fuel types (Table 2) for each one of the three modelled species from the EDGAR emission model, plus gross fluxes (gross ecosystem exchange, GEE, and respiration, R) modelled by VPRM for five different vegetation classes. For both anthropogenic and biospheric fluxes the temporal resolution of the state vector is monthly. The number of state vector elements per month amounts to 69 scaling factors for the different fuel- and sector-specific anthropogenic emissions for each species, and 10 scaling factors for biosphere–atmosphere exchange (respiration and photosynthesis for each of the five vegetation classes), so in total 217 scaling factors per month, or 2604 scaling factors for the full year. To avoid large memory requirements for \mathbf{H} and \mathbf{F} matrices, their product is directly computed within the STILT code. The random error $\boldsymbol{\varepsilon}$ accounts for measurement error related to uncertainty in the observation and to model–data mismatch resulting from model uncertainty.

Bayesian inversion combines observations (IAGOS profiles) with a priori information (scaling factors and their a priori uncertainties) to reconstruct the most probable state vector. Optimum posterior estimates of the scaling factors are obtained by minimizing the following cost function J (Rodgers, 2000):

$$J(\boldsymbol{\lambda}) = (\mathbf{y} - \mathbf{K}\boldsymbol{\lambda})^T \mathbf{S}_\varepsilon^{-1} (\mathbf{y} - \mathbf{K}\boldsymbol{\lambda}) + (\boldsymbol{\lambda} - \boldsymbol{\lambda}_{\text{prior}})^T \mathbf{S}_{\text{prior}}^{-1} (\boldsymbol{\lambda} - \boldsymbol{\lambda}_{\text{prior}}), \quad (2)$$

where the first and the second term are the observational constraint and the prior constraint term respectively. The prior scaling factors for the fluxes of the different tracers are set equal to one. \mathbf{S}_ε is the error covariance matrix for the mismatch between simulated and observed mole fractions (model–data mismatch) and accounts for instrumental uncertainty, uncertainty related to the transport model, and other sources of uncertainty like boundary conditions and flux aggregation not accounted for through the state vector adjustment. $\mathbf{S}_{\text{prior}}$ is the error covariance matrix for the prior scaling factor; its implementation requires a different approach for biospheric and anthropogenic fluxes. The detailed error structure for model–data mismatch and prior uncertainty is described in the Sect. 2.1.4. Minimizing the cost function results in an optimal posterior estimate of the state vector $\boldsymbol{\lambda}$ that is consistent with both the measurements and the prior model estimates:

$$\hat{\boldsymbol{\lambda}} = \left(\mathbf{K}^T \mathbf{S}_\varepsilon^{-1} \mathbf{K} + \mathbf{S}_{\text{prior}}^{-1} \right)^{-1} \left(\mathbf{K}^T \mathbf{S}_\varepsilon^{-1} \mathbf{y} + \mathbf{S}_{\text{prior}}^{-1} \boldsymbol{\lambda} \right). \quad (3)$$

The error covariance matrix of the optimal posterior state (the posterior uncertainty) is given by

$$\mathbf{S}_{\text{post}} = \left(\mathbf{K}^T \mathbf{S}_\varepsilon^{-1} \mathbf{K} + \mathbf{S}_{\text{prior}}^{-1} \right)^{-1}. \quad (4)$$

Note that this quantity depends on neither the prior fluxes nor the measured mixing ratios, but only on their respective uncertainties and on the transport matrix \mathbf{K} . In this study, the inverse of the matrices was calculated using the R function “solve” from the base package of R version 3.0.0 (<http://www.r-project.org/>, last access: 30 April 2013).

The targeted quantities of this study are the aggregated emissions over a specific area at a specific timescale (e.g. month); those quantities can be derived from the prior and posterior state through a spatiotemporal aggregation operator \mathbf{A} that allows for the conversion of scaling factors into physically representative quantities. As the pseudo-observations are clustered around a single location (Frankfurt), it is very likely that the fluxes over the whole European domain are not constrained. Therefore, as a spatial aggregation scale we chose an area from which fluxes have a significant contribution to the observations made at Frankfurt. For this we compute the temporally accumulated footprint values (cf. Sect. 2.1.2) for the whole year 2011, and select those spatial pixels that correspond to 50 % of the total (spatially integrated) footprint (Fig. 1). Note that by using this aggregation

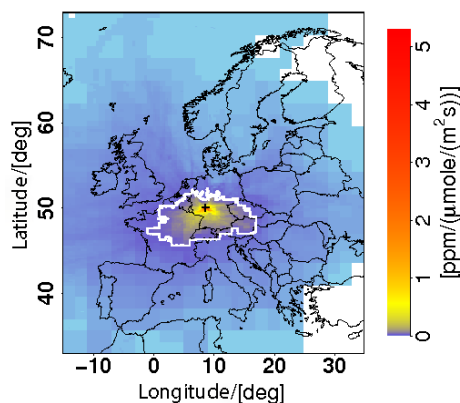


Figure 1. Cumulative sum of the ML footprints for all the flights into or out of Frankfurt airport (FRA) in the year 2011. The grey line delineates the 50 % footprint.

scale we assume perfectly known distribution within a given flux category that can result in aggregation error, especially with respect to biogenic fluxes, that are not as well known as anthropogenic fluxes. However, the chosen domain of aggregation is quite small, and the total anthropogenic fluxes are divided according to species, emission categories, fuel types, and months. This results in 69 degrees of freedom per month for each anthropogenic species and 10 degrees of freedom per month for the biospheric fluxes; for this reason we expect the aggregation error not to be a particularly important source of uncertainty. The prior and posterior uncertainty of these targeted quantities (σ_{prior} and σ_{post}) is obtained by applying the aggregation operator to the respective uncertainty covariances:

$$\sigma_{\text{prior}} = \sqrt{\mathbf{A}^T \mathbf{S}_{\text{prior}} \mathbf{A}} \quad \text{and} \quad \sigma_{\text{post}} = \sqrt{\mathbf{A}^T \mathbf{S}_{\text{post}} \mathbf{A}}. \quad (5)$$

Different versions of the aggregation operator were created for this: emissions categories are aggregated according to different fuel types (coal, oil, gas, bio, waste, and other) and according to emission sectors (energy, transport, industry, buildings, agriculture, waste, and fossil fuel fires). Note that only these aggregated fluxes are optimized, not the individual gridded fluxes of the emission inventories.

To quantitatively assess the information provided by the inversion, the reduction of uncertainty in the posterior compared to the prior estimate is a useful measure. The uncertainty reduction (UR) is defined as

$$\text{UR} = 1 - \frac{\sigma_{\text{post}}}{\sigma_{\text{prior}}}. \quad (6)$$

The uncertainty reduction ranges from 0 (posterior as large as the prior uncertainty) to 1 (posterior negligible compared to the prior uncertainty).

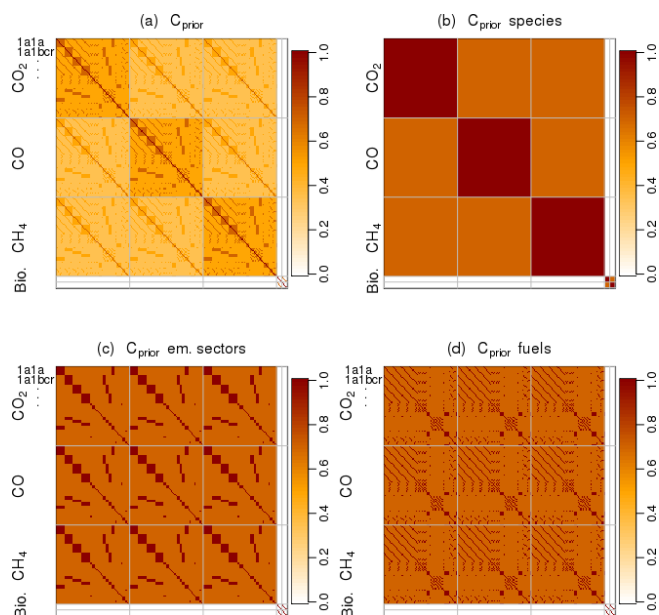


Figure 2. Prior error correlation matrix (a) used in the multi-species inversion, and the respective components for modelled species (b), emission sectors (c), and fuel types (d). Matrix (a) is the element-wise product of matrices (b), (c), and (d). Each matrix has the same dimensions (2604×2604) reflecting the length of the state vector. The matrices are shown for only 1 month here, for illustration. The grey lines indicate subsets of the flux categories according to different modelled species (blocks), ordered as follows from top to bottom and from left to right: anthropogenic CO_2 , CO, CH_4 , GEE, and respiration. In the single-species inversion, the correlation values in the off-diagonal blocks of matrix (b) are set to zero. In the complete matrix, correlation between fluxes from different months is also set to zero.

2.1.4 Prior error structure

As in this study a multi-species inversion with CO, CO_2 , and CH_4 is envisioned, we have the chance to exploit the correlations in the uncertainties of the different trace gases related to both a priori fluxes and model–data mismatch. This is particularly true for CO and CO_2 because they share a larger part of the emission sources, which implies correlations in the respective uncertainties. In the multi-species inversion, such information is stored in the areas of the error covariance matrices that describe covariance between different modelled species (off-diagonal “blocks” in Fig. 2b for $\mathbf{S}_{\text{prior}}$ and Fig. 3b for \mathbf{S}_{ϵ}). In the single-species inversions, said covariance is set to zero, corresponding to a situation where the different species are completely independent of one another. Conversely, the measurement uncertainty is stored in the main diagonal of the \mathbf{S}_{ϵ} (Fig. 3d).

We used a single year (2011) dataset restricted to the vertical profiles centred at the Frankfurt airport (FRA) and restricted to daytime during well-mixed atmospheric conditions (10:30 to 17:30 CET). The dataset contains 1098

pseudo-observations, 366 for each of the three observable species, whereas the state vector contains the scaling factors for 2604 flux categories, each equal to one in the prior.

The prior error covariance matrix can be expressed as follows:

$$\mathbf{S}_{\text{prior}} = \mathbf{C}_{\text{prior}} \rho_{\text{prior}}, \quad (7)$$

where $\mathbf{C}_{\text{prior}}$ is the prior error correlation matrix (Fig. 2a) and ρ_{prior} is a prior rescaling matrix described in Sect. 2.1.5 (Fig. 4a). First we describe how $\mathbf{C}_{\text{prior}}$ is generated. The prior error correlation matrix is a square matrix of rank 2604, reflecting the length of the state vector, and results from the product of three components (Fig. 2b, c, and d) accounting for correlations between flux categories according to the modelled species, emission sectors, and fuel types respectively. In four different instances, a correlation of 0.7 is applied:

1. between different anthropogenic modelled species;
2. between GEE and respiration;
3. between different emission sectors;
4. between different fuel types.

Such a correlation implies that the explained variance for each constraint, everything else being equal, is roughly 50 % (0.7 to the square equals 0.49), with the rest remaining independent. In addition, the correlation between fossil-fuel-related and biosphere-related scaling factors is zero, and the same holds for fluxes of different months, indicating complete independence from one another. In this study, we assume a certain annual total domain-wide flux uncertainty, and then break it down by sectors, fuels, and months by inflating the error. By assuming no correlation between different months we ensure maximum flexibility in the system to retrieve month-to-month changes based on the observations. We assume correlation between months is possible, but it has not been investigated here. It is unclear how good the seasonal variation in emissions from the inventories actually is; so in order to not rely too much on these we chose zero correlation. Investigating the effects of different correlation set-ups for the seasonal cycle could be the focus of future research.

2.1.5 Prior error scaling

After having specified the prior error correlation matrix $\mathbf{C}_{\text{prior}}$, we now describe how we rescale it to obtain $\mathbf{S}_{\text{prior}}$; for this task we rewrite Eq. (7) as

$$\mathbf{S}_{\text{prior}} = \mathbf{C}_{\text{prior}} \rho_{\text{prior}} = \begin{pmatrix} \mathbf{C}_{11} & \mathbf{C}_{12} & \mathbf{C}_{13} & 0 \\ \mathbf{C}_{21} & \mathbf{C}_{22} & \mathbf{C}_{23} & 0 \\ \mathbf{C}_{31} & \mathbf{C}_{32} & \mathbf{C}_{33} & 0 \\ 0 & 0 & 0 & \mathbf{C}_{\text{bio}} \end{pmatrix}$$

Table 3. Relative uncertainty of the prior fluxes aggregated domain-wide and annually for the different cases.

	CO ₂	CO	CH ₄
Case 1	20 %	50 %	50 %
Case 2	10 %	50 %	50 %
Case 3	10 %	25 %	25 %

$$\begin{pmatrix} 1/\rho_1 \rho_1 & 1/\rho_1 \rho_2 & 1/\rho_1 \rho_3 & 0 \\ 1/\rho_2 \rho_1 & 1/\rho_2 \rho_2 & 1/\rho_2 \rho_3 & 0 \\ 1/\rho_3 \rho_1 & 1/\rho_3 \rho_2 & 1/\rho_3 \rho_3 & 0 \\ 0 & 0 & 0 & \rho_{\text{bio}}^2 \end{pmatrix}, \quad (8)$$

where each \mathbf{C}_{ij} is a subset of the fossil fuel part of $\mathbf{C}_{\text{prior}}$ (block) as shown in Fig. 2, and each ρ_i is defined as

$$\rho_i = \sqrt{\frac{\mathbf{A}_i^T \mathbf{C}_{ii} \mathbf{A}_i'}{\left(\sum_j \mathbf{A}_{ij}' \varepsilon_i\right)^2}}, \quad (9)$$

where \mathbf{A}' is the aggregation operator for annual fluxes over the full domain, and ε_i is the corresponding relative prior uncertainty, assuming the values specified in Table 3 for different cases. Case 1 is considered as the default case, with prior uncertainty values conservatively assumed to be 20 % for CO₂, and 50 % for CO and CH₄. Conversely, \mathbf{C}_{bio} covers the biosphere part of $\mathbf{C}_{\text{prior}}$, and for $\sum \mathbf{A}_{ij}' \varepsilon_i$ for ρ_{bio} we use a prior uncertainty of 0.54 GtC y⁻¹, as derived in Kountouris et al. (2018) for the VPRM model. The biospheric part of the prior error covariance matrix assumes no correlation with the fossil fuel species.

The posterior of each Bayesian inversion depends on its specific prior. As the multi- and single-species inversions have different prior uncertainty structures, the uncertainty reduction for targeted quantities cannot be directly compared (Eq. 4). To be able to compare the two inversions, we require that the a priori aggregated uncertainty of the targeted quantities remains the same, and distribute it differently each time; the prior rescaling matrix ρ_{prior} is needed for this task. The benefits were tested for observations taken in different months and for three different error structures in the prior uncertainty. As a priori aggregated uncertainty we use a percentage of the aggregated modelled emissions for fossil fuels across the whole year. Table 3 shows the percentage values used for different cases.

2.1.6 Model–data mismatch error structure

In an atmospheric inversion, the model–data mismatch from every uncertainty source (such as measurement uncertainty, transport model uncertainty, spatial representation error due to limited model resolution, and boundary condition inaccuracies) needs to be taken into account. In our inversion

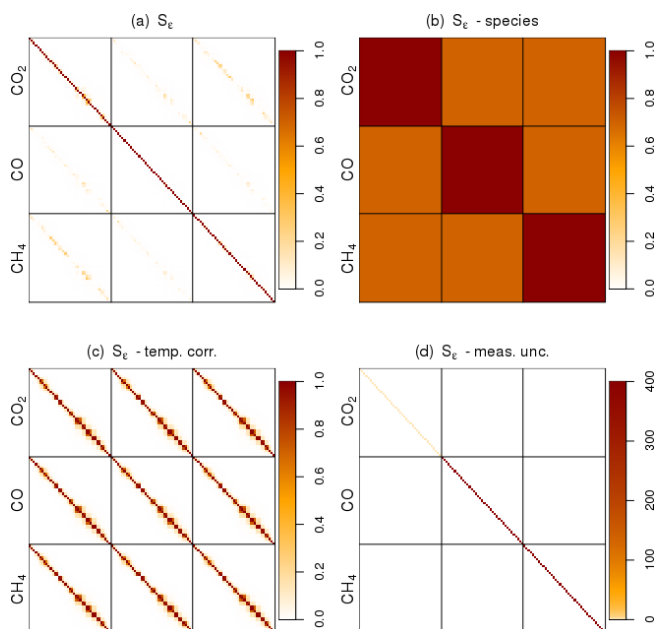


Figure 3. Model–data mismatch correlation matrix **(a)** used in the multi-species inversion, species correlation matrix **S_s** **(b)**, temporal correlation matrix **S_t** **(c)**, and squared measurement uncertainty **(d)**. Note that the measurement uncertainty is expressed in ppm for CO₂ and ppb for CO and CH₄. Each matrix has the same dimensions (1098 × 1098) reflecting the length of the observation vector, but here only the data of July are plotted to increase visibility. The grey lines indicate different species in the observation vector (blocks), ordered as follows from top to bottom and from left to right: total CO₂, CO, and CH₄. In the single-species inversion, the correlation value in the off-diagonal blocks of matrix **(b)** is set to zero. The structure in **S_s** in **(c)** is a result of the uneven temporal distribution of the observations within the month.

scheme, we parameterize both the transport model uncertainty and the measurement uncertainty, with the latter playing a minor role. The model–data mismatch covariance matrix (**S_ε**) is constructed according to the following equation:

$$\mathbf{S}_\varepsilon = \mathbf{C}_s \mathbf{C}_t \varepsilon_{\text{tran}}^2 + \varepsilon_{\text{meas}}^2, \quad (10)$$

where **C_s** accounts for correlations between different observed species (Fig. 3b), **C_t** accounts for the temporal correlation (Fig. 3c), $\varepsilon_{\text{tran}}$ is the total transport error, and $\varepsilon_{\text{meas}}^2$ accounts for all of the non-transport-related errors like spatial representation error and lateral boundary conditions (Fig. 3d).

The assumed measurement uncertainty is 1 ppm for CO₂, 20 ppb for CO, and 20 ppb for CH₄, while $\varepsilon_{\text{tran}}$ is time dependent and assumed to be proportional to the modelled enhancement due to regional fluxes. The assumed measurement uncertainty is higher than the expected instrument precision because it also includes in addition the uncertainties related to spatial representation and lateral boundary conditions. $\varepsilon_{\text{tran}}$ is characterized as follows by different compo-

nents in the vertical and horizontal domain:

$$\varepsilon_{\text{tran}} = \text{enh} \sqrt{(\varepsilon_{\text{tran}_h}^2 + \varepsilon_{\text{tran}_v}^2)}, \quad (11)$$

where enh indicates the modelled enhancement, and both the horizontal transport error $\varepsilon_{\text{tran}_h}$ and the vertical transport error $\varepsilon_{\text{tran}_v}$ are characterized as percentage error; $\varepsilon_{\text{tran}_h}$ is assumed to be 50 %, while $\varepsilon_{\text{tran}_v}$ is a profile-specific relative error with a mean value of about 10 %. The vertical transport error accounts for the fact that the shallower the mixed layer is, the more difficult it is to model the atmosphere. We assume that after z_i correction the remaining error is of the order of 50 m (related to the vertical resolution of the profile data), so the relative error $\varepsilon_{\text{tran}_v}$ is assumed to be the ratio of 50 m to the modelled z_i ; in this way we obtain an error that gets larger the shallower the mixed layer is. For the horizontal component, an uncertainty of 50 % is a conservative estimate based on Lin and Gerbig (2005), where the horizontal transport error is found to be 5.9 ppm for CO₂. This, combined with about 10 ppm of drawdown in the mixed layer relative to the free troposphere, gives something like 50 % error in the regional flux signal. The vertical component is so much smaller in percentage since the simulated mixing ratios are already corrected for mismatch between modelled and observed z_i .

In the multi-species inversion, the transport error correlation across species is 0.7 (Fig. 3b), while in the single-species inversion this is set to zero. Time correlation is assumed to decay exponentially with an exponential constant of 12 h. The between-species correlation for model–data mismatch related to transport uncertainty reflects the fact that species are partially co-emitted and share the same atmospheric transport (and its related uncertainty).

2.2 Synthetic experiment

Pseudo-data generation

As explained in the introduction, in situ measurements are not available for all of the three trace gases of interest, but only for CO. For this reason this paper aims to evaluate the benefits of a multi-species inversion over a corresponding single-species inversion by performing a synthetic experiment, using pseudo-observations derived by perturbation of the model outputs based on a priori state vector values. More precisely, the pseudo-observation vector is obtained by matrix multiplication between the Jacobian matrix **K** and what we assume to be the true state vector. The true state vector itself is obtained by using the sum of the prior state vector (all values equal to one) and a random realization of the prior error, truncated to avoid negative state vector values. In detail, the error realization is obtained by multiplying a randomly generated, normally distributed vector with the prior error covariance matrix. This ensures that such a realization has the same error correlation as the prior uncertainty. Where the

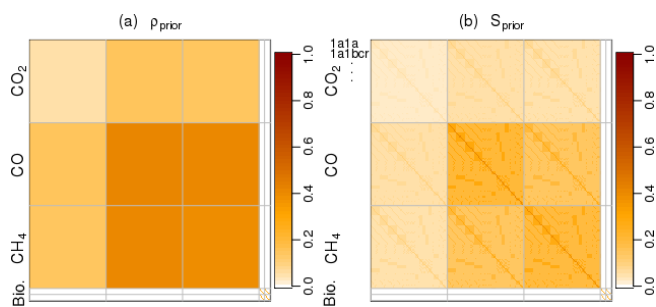


Figure 4. The final rescaling matrix ρ_{prior} (a) and the prior error covariance matrix S_{prior} (b). Note that ρ_{prior} can be defined as the element-wise ratio of S_{prior} to C_{prior} .

result of such matrix-vector product is negative, the same operation is performed recursively until all elements of the state vector are positive. This ensures that the difference between the true and prior state vector has the same error correlation structure as described by the prior error covariance matrix.

3 Results and discussion

Before evaluating the performance of the inversion scheme in reducing the uncertainty of the state space, a closer look at the ability of the modelling framework to reproduce the enhancements is necessary. Unfortunately, this can be done only for CO as actual measurements are not available for the other species. Figure 5 shows the mean daily enhancement of the three fossil fuel species for both observations and model outputs using prior emissions. A common feature of the three trace gases is that lower values tend to occur during summer time due to better mixing of the atmosphere. Conversely, enhancement values tend to be higher during winter, reflecting the more stratified atmosphere of the cold months.

In Fig. 5 the modelled CO plot was multiplied by a factor of 2.8, corresponding to the mean ratio between observed and modelled CO enhancements, similar to what was found in Boschetti et al. (2015). Mixing ratio values are highly variable, but the model provides a good indication of the temporal variation of the ML enhancement; the squared correlation coefficient between observed and modelled CO enhancements is 0.62, while the standard deviation of corrected model and observation residuals is 85 ppb; note that by not accounting for the z_i correction, such values would be 0.56 and 87 ppb respectively. The median of the mixing ratio enhancement for the three trace gases is 2.8 ppm for CO₂, 18.6 ppb for CO, and 26.6 ppb for CH₄. For CO₂ this seasonal difference is enhanced due to the simultaneous presence of both anthropogenic and biogenic emissions. During summer, values are slightly negative due to strong photosynthesis fluxes from growing vegetation from the active combined with deeper vertical mixing. Negative values arise in 31 % of the cases predominantly during the warmer months,

implying that during the growing period uptake by photosynthesis dominates over release from combustion and respiration. Both CO and CH₄ experience higher values during winter due to the shallow mixed layer usually associated with cold temperatures, and lower values during summer as higher temperatures cause the mixed layer to reach higher altitudes; differences related to seasonal domestic heating and transportation may also play a role. In addition, enhancement for both species is occasionally negative, most likely owing to advection of polluted air masses in the free troposphere. An alternative explanation is that strong winds at lower heights can disperse the emissions in the boundary layer and create a situation in which the mixing ratio in the FT is higher than in the ML.

Figure 6 shows the prior and posterior error covariance matrices for the base multi-species inversion. Note that CO₂ from anthropogenic emissions is assumed to be independent from biogenic emissions; therefore prior error correlation between these categories is zero. The posterior error covariance matrix for the multi-species inversion (Fig. 6b) shows lower values corresponding to an average uncertainty reduction of 23 % across all state vector elements, while the posterior error covariance matrix for the single-species inversion (not shown) is characterized by a mean uncertainty reduction of 20 %. This result implies that the multi-species inversion improves the uncertainty reduction by roughly 15 %. Negative values in the posterior error correlation matrix are to be expected because different categories are bound together by correlations and therefore are not free to vary independently.

Figures 7 and 8 show a priori, a posteriori, and “true” fluxes related to different aggregated fuel types and to different emission categories as described in Tables 1 and 2 for the months of July and December. Figure 8 also shows the biospheric contribution (as absolute values) scaled down by a factor of 10. As is to be expected, the biospheric contributions show strong differences according to the seasonal cycle, while anthropogenic emissions remain rather stable. However, it is worth pointing out that while the fossil fuel prior is similar for both months, the assumed truth can be rather different due to the random assignment of the prior error realization. In most cases, the posterior adapts and is therefore closer to the truth than the prior; the posterior uncertainty is also visibly reduced, as expected. Regarding the different tracers, CO₂ and CO show a somewhat similar pattern indicating a partial overlap in dominating emission categories while CH₄ is dominated by different contributions in both fuel types and emission categories.

Our modelling framework is currently not well suited to account for unreported sources of CH₄ due to the lack of information about natural gas and oil production operations, or from recent and old mining areas. Many recent studies have discussed the problem, mainly referring to shale basins exploited via hydraulic fracturing in the USA (e.g. Kort et al., 2016; Karion et al., 2015; Lyon et al., 2015). For example, Karion et al. (2015) concludes that EDGAR underesti-

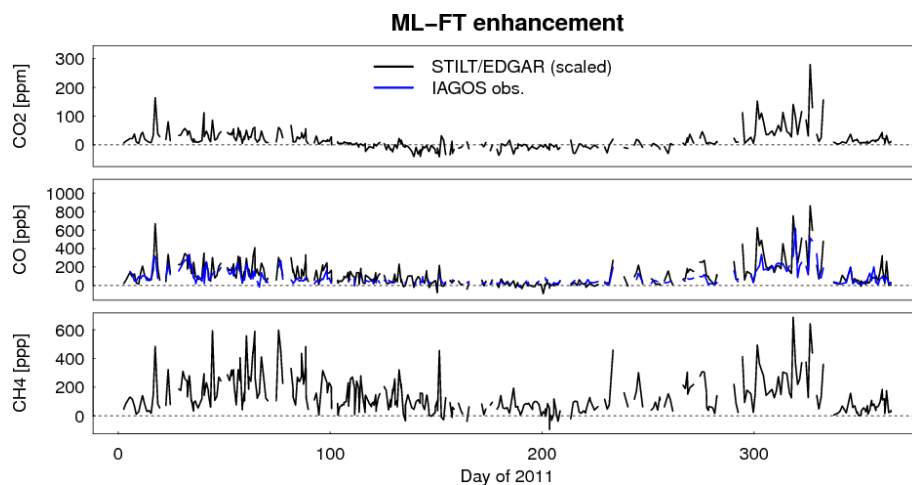


Figure 5. Mean daily enhancement of mixed layer vs. free tropospheric mole fractions. Modelled mixing ratios are shown as black lines, while the observed CO is shown as a blue line. Note that the modelled values for CO have been multiplied by a factor of 2.8, corresponding to the mean ratio between observed and modelled CO enhancements, to match the observed values.

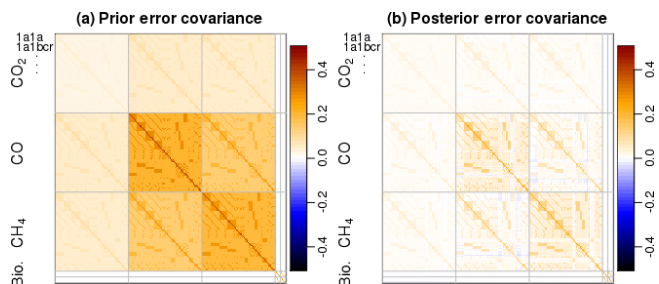


Figure 6. Prior error covariance matrix (a) and corresponding posterior error covariance matrix (b).

mates methane emissions associated with oil and gas industry by a factor of 5 in the USA. However, the situation over the European continent may be quite different. In a review about risk assessment of shale gas development in the UK, Prpich et al. (2015) reports that the European Union is generally much more cautious about unconventional oil and gas sources, while a recent study on a methane plume over the North Sea (Cain et al., 2017) concluded that the bulk signature of said plume originated from on-shore coal mines and power stations in the Yorkshire area.

In general, the absence of some emission sources in an inventory is equivalent to the assumption of having point sources not included in the emission map, but still contributing to the measurements. The inversion scheme would typically react to this by assigning such point sources in some other sectors to another fuel type. As a result, the posterior enhancements would be biased low in proximity of those point sources, and (slightly) biased high for influences from other regions with the same sector or fuel type. This issue should definitely be considered in future study making use of actual CO, CO₂, and CH₄ observations from IAGOS but

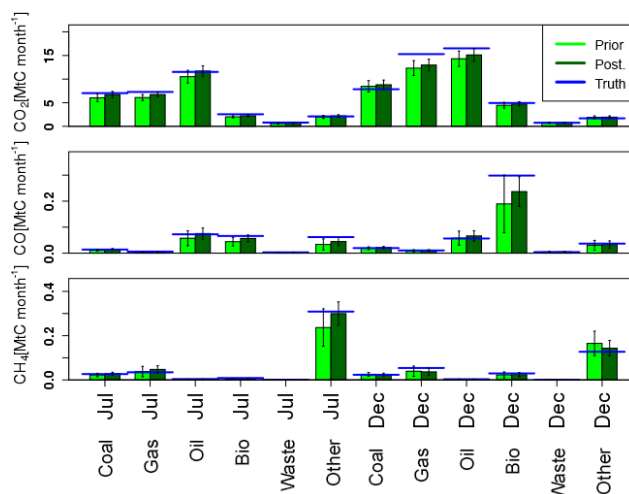


Figure 7. Prior, posterior, and true (pseudo-data) fluxes in physical units aggregated for different fuel types. Note that as the true fluxes are the result of a random perturbation of the prior, they do not describe an actual situation in the physical world. So, for example, the fact that the true value of CH₄ fluxes in July is lower than the same value in December should not be surprising.

has limited effects on this paper, as our main focus is on the benefits of inter-species correlation on the posterior uncertainty in a synthetic experiment.

Note that our modelling framework does not allow for simulating CO biogenic fluxes during the growing season. Warm days in summer correspond to large amount of biogenic volatile organic compounds (VOCs) being emitted from vegetation, producing CO at non-negligible levels. According to Hudman et al. (2008), anthropogenic emissions account for only 31 % of CO emissions in the USA during summer. Conversely, according to estimates from EDGAR, CO an-

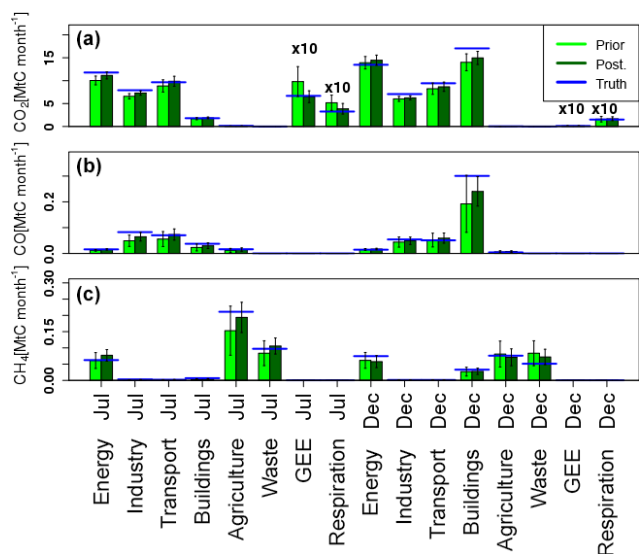


Figure 8. Prior, posterior, and true (pseudo-data) fluxes in physical units aggregated for different emission sectors for CO₂ (a), CO (b), and CH₄ (c). Absolute values of biosphere–atmosphere exchange fluxes of CO₂ are included in (a), but scaled down by a factor of 10. Note that as the true fluxes are the result of a random perturbation of the prior, they do not describe an actual situation in the physical world. So, for example, the fact that the true value of CO for transport in July is higher than the same value in December should not be surprising.

thropogenic emissions during summer are about 18 % of the annual anthropogenic emissions. Combining these two results, one could conclude that CO production from biogenic sources accounts for roughly 42 % of total annual CO emissions.

CO₂ and CO are dominated by combustion sectors (Fig. 8). The most important emission sectors for CO₂ are energy, industry, transport, and building, each contributing 7–10 in July and 6–14 MtC month⁻¹ in December. Dominant fuels (Fig. 7) for CO₂ are coal, gas, and oil, whose prior fluxes (pseudo-data) have a magnitude of 6–11 Megatons of carbon per year (MtC month⁻¹) in July and 8–14 MtC month⁻¹ in December. For CO the most important emission sector is heating of buildings during winter, contributing a flux of 0.19 MtC month⁻¹. Contributions from industry and transport dominate during summer, with magnitudes of 0.04 and 0.05 MtC month⁻¹, respectively. The dominant fuel for CO is biofuel with 0.19 MtC month⁻¹ emissions during winter. The secondary industrial and transport contributions originate in summer from oil and biofuels with a magnitude of 0.06–0.08 MtC month⁻¹ and from agricultural waste burning with a magnitude of 0.06–0.11 MtC month⁻¹.

Contrary to CO₂ and CO, CH₄ is determined by non-combustion sectors, more specifically by a contribution of 0.15 MtC month⁻¹ flux from agriculture (manure management and rice cultivation) in July with secondary con-

tributions from waste and energy with a magnitude of roughly 0.06–0.08 MtC month⁻¹ in both July and December. Other non-combustion sectors, in particular wastewater treatment and landfills contribute to a total of 0.16–0.24 MtC month⁻¹ of emissions. These non-combustion sectors contribute to less than 20 % of total CO₂ emissions, with 1.13 MtC month⁻¹ from the cement and lime industry and less than 20 % of the total CO emissions (0.03 MtC month⁻¹ from the metal industry).

The contribution to CO₂ from biospheric primary production (a sink for atmospheric CO₂) is about 100 MtC month⁻¹ in July, which drops to almost zero in December, while respiration values are 50 MtC month⁻¹ in July and roughly 15 MtC month⁻¹ in December.

As further assessment of the inversion performance, we tested the ability of the inversion scheme to capture the truth compared with a perturbed version of the prior. Such perturbed version is obtained by adding a random distribution with mean and standard deviation equal one to the prior state space, similar to how the truth is obtained. For each simulated species we calculated the total annual fluxes for prior, posterior, truth, and perturbed prior. From these total fluxes we then derive the overall residual between prior and truth, posterior and truth, and perturbed prior and truth. It is clear from Table 4 that while the overall bias between posterior and truth is lower than the prior–truth bias, the bias between perturbed prior and truth is much higher, implying that the performance of the inversion is not an artifact of the pseudo-data generation. In addition, it was found that the truth–posterior bias of the multi-species inversion is mostly slightly lower compared to the single-species inversion. The difference is between –2.2 and 7.6 %, according to the simulated species, with an overall value of 0.3 %.

Improper characterization of the error correlation may result in systematic bias in the posterior estimate. As mentioned in Sect. 2.1.6, inter-species correlation, the correlation between different fuel types and the correlation between different emission sectors in S_{prior} , is assumed equal to 0.7 (Sect. 2.1.4). To assess how well the system will reproduce the true fluxes with incorrectly specified correlations, a series of experiments was performed in which the inter-species correlation in S_{e} remains equal to 0.7, while the three correlation coefficients in S_{prior} assume different values ranging from 0.1 to 0.9. Table 5 shows the residuals between total annual posterior fluxes and total annual true fluxes for the five simulated species, derived similarly as for Table 4. We found that for all species the uncertainty reduction increases with correlation. More precisely, from correlation 0.1 to 0.9, the annual uncertainty reduction for anthropogenic CO₂ increases from 26.6 to 51.7 %, while the increase is lower for GEE (from 72.4 to 73.1 %) and respiration (from 39.3 to 41.3 %) because the biospheric fluxes are independent from other species. For CO, the uncertainty reduction increases from 60.7 (with correlation 0.1) to 66.4 % (with correlation 0.9). The annual uncertainty reduction for CH₄ increases from 60.5 to 67.5 %.

Table 4. Overall bias for different species between the prior and both posterior and perturbed prior. The percentage values in parentheses are the corresponding prior–truth bias.

	Prior–truth (MtC y ⁻¹)	Posterior–truth (MtC y ⁻¹)	Pert. prior–truth (MtC y ⁻¹)
CO ₂ FF	−14.2	1.5 (−111 %)	−8.8 (−38 %)
CO	−0.95	−0.29 (−69 %)	−1.08 (+13 %)
CH ₄	0.36	0.11 (−68 %)	0.84 (+133 %)
GEE	−81.8	−17.9 (−78 %)	−116.8 (+43 %)
Respiration	39.5	20.6 (−48 %)	62.2 (+58 %)

In addition, the posterior–truth biases are always lower than the prior–truth biases. The posterior uncertainty values (1σ) are usually larger than the corresponding bias values as expected, except for CO and for CH₄ with prior correlations equal to 0.9. Thus the posterior is not significantly different from the truth. Conversely, the prior (not shown) is significantly different from the prior in the majority of cases for fossil fuel fluxes, and in some cases also for biogenic fluxes. The effect of assuming the incorrect error correlations appears to be in general small, possibly implying a relative robustness of our methods. Following this result, the fact that CH₄ is only partially co-emitted with CO₂ and CO should not affect the inversion in a strong way. For all of the experiments, the residuals between true and posterior fluxes are lower than residuals between true and prior fluxes for each of the simulated species; the difference between the cases with maximum and minimum residuals is around 4.2 %. In addition, we found that the posterior aggregated fluxes in the nine experiments are not significantly different from each other, implying that the system is fairly robust against errors in the assumed inter-species correlation.

Before investigating the benefits of correlations between different tracers, it is worthwhile to evaluate the uncertainty reduction in the monthly budgets for all five modelled species (Fig. 9, based on targeted spatial domain in Fig. 1). The first thing to note is that for all of the five trace gases the posterior uncertainty is lower than the prior one, as it should be. In addition, prior uncertainty varies through the year, reflecting modulation in emission fluxes obtained by adding activity factors to describe the seasonal, weekly, and daily cycle.

Prior uncertainty assumes values around 0.4–0.6 MtC month⁻¹ for CO₂, 5–15 ktC month⁻¹ for CO, and 15 ktC month⁻¹ for CH₄. For GEE the prior uncertainty is between 0.3 and 46.7 MtC month⁻¹, and for respiration it is 5.1–19.0 MtC month⁻¹. Posterior uncertainty for CO₂ is 0.24–0.38 MtC month⁻¹ for fossil fuel emissions, 0.3–9.9 MtC month⁻¹ for GEE, and 3.1–10.4 MtC month⁻¹ for respiration, while it has a range of 3.3–4.7 for CO and 2.7–7.0 ktC month⁻¹ for CH₄. Mean uncertainty reduction of the monthly values is 38 % for fossil fuel emissions of CO₂, 41 % for GEE, and roughly 45 % for respiration, 63 % for CO, and about 67 % for CH₄. It is worth pointing out that

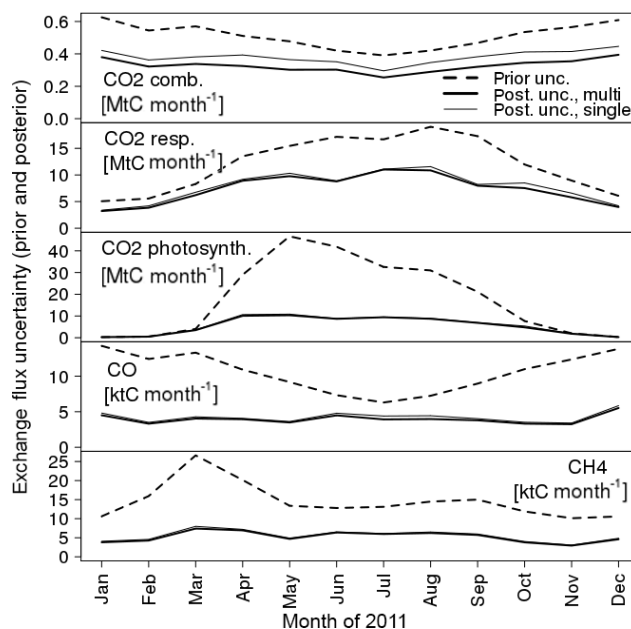


Figure 9. Comparison between prior and posterior monthly uncertainties for the five tracers. The posterior uncertainty is plotted for both the multi-species inversion, accounting for inter-species correlations, and the single-species inversion, in which all of the species are independent. Both prior and posterior uncertainty are expressed in physical units. The spike in the prior methane uncertainty estimate for the month of March depends on the emission inventory and is related to the cycle of agricultural activities.

such values are higher than the mean uncertainty reduction in the scaling factors (23 %); this happens because the most representative emission sectors are those influencing the observations the most and thus are also the most constrained.

In addition, note that in this case, the posterior uncertainties for single- and multi-species inversions are similar for the modelled species, with the exception of the CO₂ anthropogenic contributions. To generalize this last result, we tested the benefit of a multi-species inversion for the different cases of prior uncertainty values shown in Table 3. As an indicator for the benefit of including correlation between different species, we use the ratio between posterior uncertainty of the multi-species inversion and the posterior uncertainty of the corresponding single-species inversion. A value of 1 means that there is no benefit from adding an inter-species correlation to the inversion, while values greater than 1 mean that a multi-species inversion is even less constrained than a single-species one. We expect this indicator to be less than 1, meaning that inter-species correlations actually improve the constraint power of the inversion. As before, we consider here the uncertainties of the retrieved budgets for the 50 % footprint, where the surface influence is strongest (Fig. 1). Values of this uncertainty ratio for the different trace gases as function of month are shown in Fig. 10 for the different cases listed in Table 3. The benefit of including inter-species

Table 5. Residuals between total annual posterior fluxes (post) and total annual true fluxes (truth) for the five simulated species (in MtC y^{-1}) and different inter-species correlation values in the prior error covariance matrix (first column). The corresponding posterior uncertainty was added for each post–truth value.

Correlation	Post–truth CO_2 FF	Post–truth CO	Post–truth CH_4	Post–truth GEE	Post–truth respiration
0.1	-6.3 ± 16.4	-0.3 ± 0.2	-0.1 ± 0.3	-18.5 ± 23.6	-19.0 ± 27.5
0.2	$-4-4 \pm 16.1$	-0.3 ± 0.2	0.0 ± 0.3	-18.6 ± 23.5	-19.2 ± 27.4
0.3	-2.7 ± 15.9	-0.3 ± 0.2	0.0 ± 0.3	-18.6 ± 23.4	-19.5 ± 27.3
0.4	-1.3 ± 15.6	-0.3 ± 0.2	0.0 ± 0.3	-18.5 ± 23.4	-19.7 ± 27.3
0.5	-0.1 ± 15.2	-0.3 ± 0.2	0.0 ± 0.2	-18.4 ± 23.3	-20.0 ± 27.2
0.6	0.8 ± 14.6	0.3 ± 0.2	0.1 ± 0.2	-18.2 ± 23.2	-20.3 ± 27.1
0.7	1.5 ± 13.7	-0.3 ± 0.2	0.1 ± 0.2	-17.9 ± 23.2	-20.6 ± 26.9
0.8	1.9 ± 12.4	-0.3 ± 0.2	0.2 ± 0.2	-17.6 ± 23.1	-20.9 ± 26.8
0.9	1.5 ± 10.4	-0.4 ± 0.2	0.3 ± 0.2	-17.3 ± 23.0	-21.1 ± 26.5

correlations shown in Fig. 10 does not depend on different manifestations of the true fluxes, but only on the posterior uncertainty of the multi- and single-species inversions.

All of the species experience a reduction in the posterior uncertainty ratio due to the addition of inter-species correlation; said reduction is up to 20 % for fossil fuel CO_2 and up to 10 % for the other species; in addition, anthropogenic CO_2 is more sensitive to the prior relative error values than CO and CH_4 . As the uncertainty of GEE and respiration is not modified, they show little to no variation for different cases (Fig. 10). There is a dependence of the benefit of the multi-species inversion over the single-species inversion on the prior uncertainty values (differences between Cases 1–3), with the largest difference for fossil fuel emissions of CO_2 . Interestingly for Case 2 with reduced prior uncertainty for fossil fuel CO_2 emissions the benefit nearly doubles over the default case (Case 1). Also reducing the prior uncertainties of CO and CH_4 emissions (Case 3) more or less compensates for this increase in benefit. The reason for both of these results is probably to be found in Eq. (8). In fact, changing the prior uncertainty in CO_2 emissions means to also change the off-diagonal blocks linking the different species together. However, by reducing the anthropogenic CO_2 uncertainty from 20 to 10 % (Case 2), the diagonal block for CO_2 in the prior uncertainty changes by a factor of 4, while the off-diagonal blocks change only by a factor of 2. This effectively ties the emissions of CO_2 tighter to the emissions of the other species, resulting in greater benefit from a multi-species inversion over a single-species inversion. Conversely, when all prior uncertainties are reduced by a factor of 2 (Case 3), both diagonal and off-diagonal blocks are reduced by a factor of 4. This explains why Case 1 and Case 3 show similar benefit values. Note that the assumed prior uncertainties for the default case (Case 1) are quite conservative; therefore lower uncertainties were chosen for Cases 2 and 3. While the absolute benefit of adding inter-species correlation is not a game-changer, it is worth pointing out that such improvement also comes with only slightly greater computational effort than multiple independent single-species inversions.

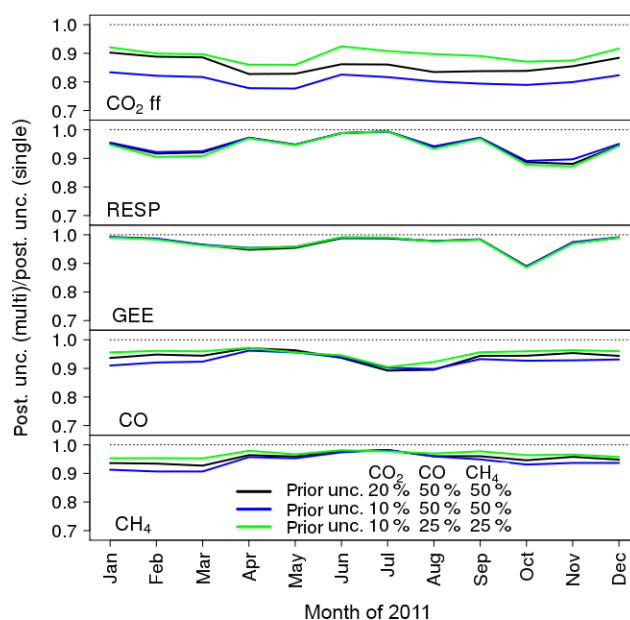


Figure 10. Benefit of a multi-species inversion over the corresponding single-species inversion (dotted line) per different species per months of the year. The benefit has been tested for the three different cases of Table 3. Note that CO_2 refers to fossil fuel emissions only, and RESP and GEE refers to the biospheric fluxes. Note that “unc.” stands for uncertainty.

In order to assess the contribution of inter-species correlation in the prior uncertainty vs. that of model–data mismatch uncertainty, Fig. 11 also shows the resulting posterior uncertainty ratios for Case 1 (Table 3) from inversions only using prior or model–data mismatch correlation. For the anthropogenic component of CO_2 , the greatest constraint is given by the prior correlation, while for GEE, respiration, and CH_4 the strongest contribution is from the model–data mismatch correlation. In the case of CO, the inter-species correlations for different components are dominant for different months of the year. What makes CO sensitive to different correla-

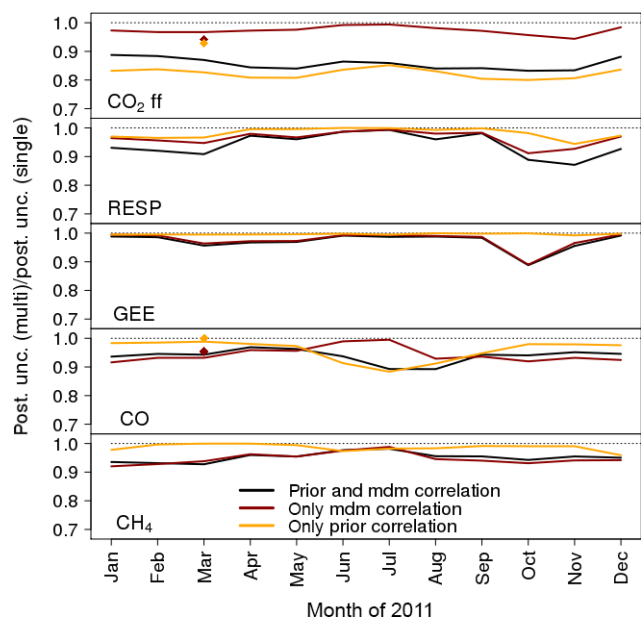


Figure 11. Benefit of a multi-species inversion over the corresponding single-species inversion (dotted line) per different species and month. The benefit has been tested for a “normal” inversion featuring both prior and model–data mismatch (mdm) correlation between different species (black) or only one of these two components (red and orange). Results refer to Case 1 of Table 3 (black line of Fig. 10). Values derived from Palmer et al. (2006) for the month of March are indicated with a diamond. Note that “unc.” stands for uncertainty.

tion structures during different seasons is CO enhancement showing a stronger seasonal cycle compared to, for example, the fossil fuel component of the CO₂ enhancement, with average values of around 150 ppb (25 ppm for CO₂) for January and around 9 ppb (4 ppm for CO₂) for July. This results in a much weaker constraint on the CO emissions from the CO observations during summer, but there is still some constraint through the other species such as CO₂ via the a priori correlation in the emissions.

Palmer et al. (2006; in the following referred to as P06) studied the importance of inter-species correlation to improve inverse analysis using airborne data from the TRACE-P mission conducted in March/April 2001 over the western region of the Pacific Ocean. P06 derived a prior error correlation lower than 0.2 by analysing the uncertainty of emission factors from an Asia-specific emission inventory (Streets, 2003), which is significantly smaller than the correlation of 0.7 assumed in the present study. P06 deemed CO₂–CO prior correlation greater than 0.5 to be unrealistic for the emissions in Asia, which is mostly associated with the uncertainty in emission factors for CO of 67 % for fossil fuel emissions and 240 % for biofuel emissions in China (P06 Table 1). However, for the European region used in the present paper we argue that values around 0.7 are appropriate. The resulting

uncertainty in the CO₂–CO ratio, diagnosed from the prior error covariance matrix used in this study, is about 50 % for both biofuel and fossil fuel emissions in Europe, which we regard as reasonable. To compare results from P06 with those from the present study, ratios of posterior uncertainties resulting from inversions using correlations between CO₂ and CO of 0.7 in the prior uncertainties and to those using no correlations have been extracted from Fig. 7 in P06 and are also shown as orange diamonds in Fig. 11. It is easy to see that for anthropogenic CO₂, the value derived from P06 is higher than in our study, while the two values are very similar for CO. Similarly, posterior uncertainty ratios using model–data mismatch correlations of 0.7 between CO₂ and CO are derived from Fig. 8 of P06 and are shown as red diamonds. In this case, the value derived from P06 is slightly lower than in our study for anthropogenic CO₂, while the two are again very similar for CO.

From this comparison we can see that the estimates of the benefit of including inter-species correlation in atmospheric inversions in P06 and in this paper are of the same order of magnitude for anthropogenic CO₂ and almost identical for CO, suggesting a general continuity of results.

4 Conclusions

The present paper presents a synthetic experiment aiming to evaluate the effects of exploiting correlations between different trace gases in an atmospheric inversion. We quantitatively described the capability of the modelling framework to reproduce observations, the performance of the inversion scheme in reducing the uncertainty of the different trace gases, and the benefits of multi-species inversions compared to corresponding single-species inversions. We also describe a method to re-scale different prior uncertainty covariance matrices so that the corresponding posterior uncertainties are actually comparable.

Where possible, we compared model outputs with available observations. Such comparison, possible only for CO, showed a good degree of agreement between the model and observations with an overall correlation of roughly 0.75; modelled values for CO enhancement underestimate the observed ones by a factor of roughly 2.8, compatible with what was found in Boschetti (2015). It is found that posterior uncertainty is much lower than the prior for all of the five simulated species. The mean uncertainty reduction for CO₂ emissions from fossil fuels is roughly 38 %, for GEE it is around 41 %, while for respiration it is roughly 44 %. For CO and CH₄ the uncertainty reduction is about 63 and 67 % respectively. Finally, we described quantitatively the benefit of using multi-species inversions by exploiting correlations in different chemical species. It is found that considering correlations between different trace gases can reduce the posterior uncertainty by up to about 20 % for monthly fluxes. These

benefits are however dependent on the error structure of the prior uncertainty.

The present paper paves the way for future studies using simultaneous measurements of different trace gases. This will be especially important in the context of the upcoming routine measurements of CO₂, CO, and CH₄ vertical profiles within IAGOS. As IAGOS makes use of commercial airliners, such profiles will be collected in the vicinity of major international airports, and hence in the vicinity of major metropolitan areas, where many different human activities take place simultaneously. In such a context, any improvement in the constraint of atmospheric inversions will be particularly useful. A possible improvement in this analysis would be to evaluate the effects of different correlation factors specific to different pairs of anthropogenic species, fuels, and emission sectors.

Data availability. IAGOS and MOZAIC data for carbon monoxide mole fraction measurements are available at the IAGOS data base under <http://iagos.sedoo.fr/portal.html> (last access: 14 November 2016).

Competing interests. The authors declare that they have no conflict of interest.

Acknowledgements. The research leading to these results was supported by the European Community's Seventh Framework Programme ([FP7/2007-2013]) under grant agreement no. 312311 (IGAS).

The authors acknowledge the strong support of the European Commission, Airbus, and the airlines (Lufthansa, Air France, Austrian, Air Namibia, Cathay Pacific, Iberia, and China Airlines so far) who carry the MOZAIC or IAGOS equipment and have performed maintenance since 1994. In its last 10 years of operations, MOZAIC has been funded by INSU-CNRS (France), Météo-France, Université Paul Sabatier (Toulouse, France), and Forschungszentrum Jülich (FZJ, Jülich, Germany). IAGOS has been additionally funded by the EU projects IAGOS-DS and IAGOS-ERI. The MOZAIC–IAGOS database is supported by Aeris (CNES AND INSU-CNRS).

Edited by: Martyn Chipperfield

Reviewed by: three anonymous referees

References

- Berezin, E. V., Konovalov, I. B., Ciais, P., Broquet, G., Wu, L., Beekmann, M., Hadji-Lazaro, J., Clerbaux, C., Andreae, M. O., Kaiser, J. W., and Schulze, E. D.: CO₂ emissions from wildfires in Siberia: FRP measurement based estimates constrained by satellite and ground based observations of co-emitted species, EGU General Assembly 2013, 7–12 April 2013, Vienna, Austria, Geophysical Research Abstracts, 15, EGU2013-6796, 2013.
- Bergamaschi, P., Hein, R., Heimann, M., and Crutzen, P. J.: Inverse modeling of the global CO cycle: 1. Inversion of CO mixing ratios, *J. Geophys. Res.*, 105, 1909–1927, 2000.
- Boschetti, F., Chen, H., Thouret, V., Nedelec, P., Janssens-Maenhout, G., and Gerbig, C.: On the representation of IAGOS/MOZAIC vertical profiles in chemical transport models: contribution of different error sources in the example of carbon monoxide, *Tellus B*, 67, 28292, <https://doi.org/10.3402/tellusb.v67.28292>, 2015.
- Brioude, J., Petron, G., Frost, G. J., Ahmadov, R., Angevine, W. M., Hsie, E. Y., Kim, S. W., Lee, S. H., McKeen, S. A., Trainer, M., Fehsenfeld, F. C., Holloway, J. S., Peischl, J., Ryerson, T. B., and Gurney, K. R.: A new inversion method to calculate emission inventories without a prior at mesoscale: Application to the anthropogenic CO₂ emission from Houston, Texas, *J. Geophys. Res.*, 117, D05312, <https://doi.org/10.1029/2011JD016918>, 2012.
- Brioude, J., Angevine, W. M., Ahmadov, R., Kim, S.-W., Evan, S., McKeen, S. A., Hsie, E.-Y., Frost, G. J., Neuman, J. A., Pollock, I. B., Peischl, J., Ryerson, T. B., Holloway, J., Brown, S. S., Nowak, J. B., Roberts, J. M., Wofsy, S. C., Santoni, G. W., Oda, T., and Trainer, M.: Top-down estimate of surface flux in the Los Angeles Basin using a mesoscale inverse modeling technique: assessing anthropogenic emissions of CO, NO_x and CO₂ and their impacts, *Atmos. Chem. Phys.*, 13, 3661–3677, <https://doi.org/10.5194/acp-13-3661-2013>, 2013.
- Bousquet, P., Ciais, P., Miller, J. B., Dlugokencky, E. J., Hauglustaine, D. A., Prigent, C., Van der Werf, G. R., Peylin, P., Brunke, E. G., Carouge, C., and Langenfelds, R. L.: Contribution of anthropogenic and natural sources to atmospheric methane variability, *Nature*, 443, 439–443, 2006.
- BP (British Petroleum): Statistical Review of World Energy, available at: <http://www.bp.com/statisticalreview>, last access: September 2014.
- Cain, M., Warwick, N. J., Fisher, R. E., Lowry, D., Lanoisellé, M., Nisbet, E. G., France, J., Pitt, J., O'Shea, S., Bower, K. N., Allen, G., Illingworth, S., Manning, A. J., Bauguitte, S., Pisso, I., and Pyle, J. A.: A cautionary tale: A study of a methane enhancement over the North Sea, *J. Geophys. Res.-Atmos.*, 122, 7630–7645, <https://doi.org/10.1038/s41598-017-04802-6>, 2017.
- Denier van der Gon, H. D., Hendriks, C., Kuenen, J., Segers, A., and Visschedijk, A.: Description of current temporal emission patterns and sensitivity of predicted AQ for temporal emission patterns, TNO Report, EU FP7 MACC deliverable report D_D-EMIS_1.3, available at: https://gmes-atmosphere.eu/documents/deliverables/d-emis/MACC_TNO_del_1_3_v2.pdf (last access: 15 July 2016), 2011.
- Enting, I. G., Trudinger, C. M., and Francey, R. J.: A synthesis inversion of the concentration and $\delta^{13}\text{C}$ of atmospheric CO₂, *Tellus B*, 47, 35–52, 1995.
- European Commission, Joint Research Centre (JRC)/Netherlands Environmental Assessment Agency (PBL): Emission Database for Global Atmospheric Research (EDGAR), release version 4.3.1., available at: <http://edgar.jrc.ec.europa.eu>, last access: 23 February 2016.
- Food and Agricultural Organization (FAO): FAO Statistical Yearbook 2013 – World food and agriculture, available at: <http://www.fao.org/docrep/018/i3107e/i3107e.PDF> (last access: 15 June 2016), 2013.

- Filges, A., Gerbig, C., Chen, H., Franke, H., Klaus, C., and Jordan, A.: The IAGOS-core greenhouse gas package: a measurement system for continuous airborne observations of CO₂, CH₄, H₂O and CO, *Tellus B*, 67, 27989, <https://doi.org/10.3402/tellusb.v67.27989>, 2015.
- Friedlingstein, P., Cox, P., Betts, R., Bopp, L., Von Bloh, W., Brovkin, V., Cadule, P., Doney, S., Eby, M., Fung, I., and Bala, G.: Climate-carbon cycle feedback analysis: results from the C4MIP model intercomparison, *J. Climate*, 19, 3337–3353, 2006.
- Gerbig, C., Lin, J. C., Wofsy, S. C., Daube, B. C., Andrews, A. E., Stephens, B. B., Bakwin, P. S., and Grainger, C. A.: Toward constraining regional-scale fluxes of CO₂ with atmospheric observations over a continent: 2. Analysis of COBRA data using a receptor-oriented framework, *J. Geophys. Res.-Atmos.*, 108, 4757, <https://doi.org/10.1029/2003JD003770>, 2003.
- Gourdji, S. M., Mueller, K. L., Yadav, V., Huntzinger, D. N., Andrews, A. E., Trudeau, M., Petron, G., Nehrkorn, T., Eluszkiewicz, J., Henderson, J., Wen, D., Lin, J., Fischer, M., Sweeney, C., and Michalak, A. M.: North American CO₂ exchange: inter-comparison of modeled estimates with results from a fine-scale atmospheric inversion, *Biogeosciences*, 9, 457–475, <https://doi.org/10.5194/bg-9-457-2012>, 2012.
- Heimann, M. and Körner, S.: The global atmospheric tracer model TM3, Technical Reports, Max-Planck-Institut für Biogeochemie, 5, 131 pp., 2003.
- Hein, R., Crutzen, P. J., and Heimann, M.: An inverse modeling approach to investigate the global atmospheric methane cycle, *Global Biogeochem. Cy.*, 11, 43–76, 1997.
- Hudman, R. C., Murray, L. T., Jacob, D. J., Millet, D. B., Turquety, S., Wu, S., Blake, D. R., Goldstein, A. H., Holloway, J., and Sachse, G. W.: Biogenic versus anthropogenic sources of CO in the United States, *Geophys. Res. Lett.*, 35, 23073, <https://doi.org/10.1029/2007GL032393>, 2008.
- Inness, A., Baier, F., Benedetti, A., Bouarar, I., Chabrilat, S., Clark, H., Clerbaux, C., Coheur, P., Engelen, R. J., Errera, Q., Flemming, J., George, M., Granier, C., Hadji-Lazaro, J., Huijnen, V., Hurtmans, D., Jones, L., Kaiser, J. W., Kapsomenakis, J., Lefevre, K., Leitão, J., Razinger, M., Richter, A., Schultz, M. G., Simmons, A. J., Suttie, M., Stein, O., Thépaut, J.-N., Thouret, V., Vrekoussis, M., Zerefos, C., and the MACC team: The MACC reanalysis: an 8 yr data set of atmospheric composition, *Atmos. Chem. Phys.*, 13, 4073–4109, <https://doi.org/10.5194/acp-13-4073-2013>, 2013.
- IPCC: Climate Change 2014: Synthesis Report, Contribution of Working Groups I, II, and III to the Fifth Assessment Report of the Intergovernmental Panel on Climate Change, edited by: Core Writing Team, Pachauri, R. K., and Meyer, L. A., IPCC, Geneva, Switzerland, 151 pp., 2014.
- Kadyrov, N., Broquet, G., Chevallier, F., Rivier, L., Gerbig, C., and Ciais, P.: On the potential of the ICOS atmospheric CO₂ measurement network for estimating the biogenic CO₂ budget of Europe, *Atmos. Chem. Phys.*, 15, 12765–12787, <https://doi.org/10.5194/acp-15-12765-2015>, 2015.
- Karion, A., Sweeney, C., Kort, E. A., Shepson, P. B., Brewer, A., Cambaliza, M., Conley, S. A., Davis, K., Deng, A., Hardesty, M., Herndon, S. C., Lauvaux, T., Lavoie, T., Lyon, D., Newberger, T., Pétron, G., Rella, C., Smith, M., Wolter, S., Yacovitch, T. I., and Tans, P.: Aircraft-Based Estimate of Total Methane Emissions from the Barnett Shale Region, *Environ. Sci. Technol.*, 49, 8124–8131, <https://doi.org/10.1021/acs.est.5b00217>, 2015.
- Kort, E. A., Smith, M. L., Murray, L. T., Gvakharia, A., Brandt, A. R., Peischl, J., Reyerson, T. B., Sweeney, C., and Travis, K.: Fugitive emissions from the Bakken shale illustrate role of shale production in global ethane shift, *Geophys. Res. Lett.*, 43, 4617–4623, <https://doi.org/10.1002/2016GL068703>, 2016.
- Konovalov, I. B., Berezin, E. V., Ciais, P., Broquet, G., Beekmann, M., Hadji-Lazaro, J., Clerbaux, C., Andreae, M. O., Kaiser, J. W., and Schulze, E.-D.: Constraining CO₂ emissions from open biomass burning by satellite observations of co-emitted species: a method and its application to wildfires in Siberia, *Atmos. Chem. Phys.*, 14, 10383–10410, <https://doi.org/10.5194/acp-14-10383-2014>, 2014.
- Kountouris, P., Gerbig, C., Rödenbeck, C., Karstens, U., Koch, T. F., and Heimann, M.: Atmospheric CO₂ inversions on the mesoscale using data-driven prior uncertainties: quantification of the European terrestrial CO₂ fluxes, *Atmos. Chem. Phys.*, 18, 3047–3064, <https://doi.org/10.5194/acp-18-3047-2018>, 2018.
- Lin, J., Gerbig, C., Wofsy, S., Andrews, A., Daube, B., Davis, K., and Grainger, C.: A near-field tool for simulating the upstream influence of atmospheric observations: The Stochastic Time-Inverted Lagrangian Transport (STILT) model, *J. Geophys. Res.*, 108, 4493, <https://doi.org/10.1029/2002JD003161>, 2003.
- Lin, J. C. and Gerbig, C.: Accounting for the effect of transport errors on tracer inversions, *Geophys. Res. Lett.*, 32, L01802, <https://doi.org/10.1029/2004GL021127>, 2005.
- Lyon, D. R., Zavala-Araiza, D., Alvarez, R. A., Harriss, R., Palacios, V., Lan, X., Talbot, R., Lavoie, T., Shepson, P., Yacovitch, T. I., Herndon, S. C., Marchese, A. J., Zimmerle, D., Robinson, A. L., and Hamburg, S. P.: Constructing a Spatially Resolved Methane Emission Inventory for the Barnett Shale Region, *Environ. Sci. Technol.*, 49, 8147–8157, <https://doi.org/10.1021/es506359c>, 2015.
- Machida, T., Matsueda, H., Sawa, Y., Nakagawa, Y., Hirokuni, K., Kondo, N., Goto, K., Nakazawa, T., Ishikawa, K., and Ogawa, T.: Worldwide Measurements of Atmospheric CO₂ and Other Trace Gas Species Using Commercial Airlines, *J. Atmos. Ocean. Tech.*, 25, 1744–1754, <https://doi.org/10.1175/2008JTECHA1082.1>, 2008.
- Mahadevan, P., Wofsy, S. C., Matross, D. M., Xiao, X., Dunn, A. L., and Lin, J. C.: A satellite-based biosphere parameterization for net ecosystem CO₂ exchange: Vegetation Photosynthesis and Respiration Model (VPRM), *Global Biogeochem. Cy.*, 22, GB2005, <https://doi.org/10.1029/2006GB002735>, 2008.
- Marengo, A., Thouret, V., Nédélec, P., Smit, H., Helten, M., Kley, D., Karcher, F., Simon, P., Law, K., and Pyle, J.: Measurement of ozone and water vapor by Airbus in-service aircraft: The MOZAIK airborne program, An overview, *J. Geophys. Res.-Atmos.*, 103, 25631–25642, 1998.
- Palmer, P. I., Suntharalingam, P., Jones, D. B. A., Jacob, D. J., Streets, D. G., and Fu, Q.: Using CO₂:CO correlations to improve inverse analyses of carbon fluxes, *J. Geophys. Res.*, 111, D12318, <https://doi.org/10.1029/2005JD006697>, 2006.
- Pandey, S., Houweling, S., Krol, M., Aben, I., and Röckmann, T.: On the use of satellite-derived CH₄:CO₂ columns in a joint inversion of CH₄ and CO₂ fluxes, *Atmos. Chem. Phys.*, 15, 8615–8629, <https://doi.org/10.5194/acp-15-8615-2015>, 2015.

- Peischl, J., Ryerson, T. B., Brioude, J., Aikin, K. C., Andrews, A. E., Atlas, E., Blake, D., Daube, B. C., de Gouw, J. A., Dlugokencky, E., Frost, G. J., Gentner, D. R., Gilman, J. B., Goldstein, A. H., Harley, R. A., Holloway, J. S., Kofler, J., Kuster, W. C., Lang, P. M., Novelli, P. C., Santoni, G. W., Trainer, M., Wofsy, S. C., and Parrish, D. D.: Quantifying sources of methane using light alkanes in the Los Angeles basin, California, *J. Geophys. Res.-Atmos.*, 118, 4974–4990, <https://doi.org/10.1002/jgrd.50413>, 2013.
- Petzold, A., Thouret, V., Gerbig, C., Zahn, A., Brenninkmeijer, C.A.M., Gallagher, M., Hermann, M., Pontaud, M., Ziereis, H., Boulanger, D., Nédélec, P., Smit, H. G. J., Cammas, J.-P., Volz-Thomas, A., and the IAGOS Team: Global-Scale Atmosphere Monitoring by In-Service Aircraft – Current Achievements and Future Prospects of the European Research Infrastructure IAGOS, *Tellus B*, 67, 28452, <https://doi.org/10.3402/tellusb.v67.28452>, 2015.
- Pison, I., Bousquet, P., Chevallier, F., Szopa, S., and Hauglustaine, D.: Multi-species inversion of CH₄, CO and H₂ emissions from surface measurements, *Atmos. Chem. Phys.*, 9, 5281–5297, <https://doi.org/10.5194/acp-9-5281-2009>, 2009.
- Prpich, G., Coulon, F., and Anthony, E. J.: Review of the scientific evidence to support environmental risk assessment of shale gas development in the UK, *Sci. Total Environ.*, 563–564, 731–740, <https://doi.org/10.1016/j.scitotenv.2015.11.026>, 2016.
- Rödenbeck, C., Houweling, S., Gloor, M., and Heimann, M.: Time-dependent atmospheric CO₂ inversions based on interannually varying tracer transport, *Tellus B*, 55, 488–497, 2003.
- Rodgers, C. D.: *Inverse Methods for Atmospheric Sounding: Theory and Practice*, World Scientific Publishing Co. Pte. Ltd., Singapore, 238 pp., 2000.
- Sasakawa, M., Shimoyama, K., Machida, T., Tsuda, N., Suto, H., Arshinov, M., Davydov, D., Fofonov, A., Krasnov, O., Saeki, T., and Koyama, Y.: Continuous measurements of methane from a tower network over Siberia, *Tellus B*, 62, 403–416, 2010.
- Sawa, Y., Machida, T., and Matsueda, H.: Aircraft observation of the seasonal variation in the transport of CO₂ in the upper atmosphere, *J. Geophys. Res.-Atmos.*, 117, D05305, <https://doi.org/10.1029/2011JD016933>, 2012.
- Steinbach, J., Gerbig, C., Rödenbeck, C., Karstens, U., Minejima, C., and Mukai, H.: The CO₂ release and Oxygen uptake from Fossil Fuel Emission Estimate (COFFEE) dataset: effects from varying oxidative ratios, *Atmos. Chem. Phys.*, 11, 6855–6870, <https://doi.org/10.5194/acp-11-6855-2011>, 2011.
- Streets, D. G., Bond, T. C., Carmichael, G. R., Fernandes, S. D., Fu, Q., He, D., Klimont, Z., Nelson, S. M., Tsai, N. Y., Wang, M. Q., and Woo, J. H.: An inventory of gaseous and primary aerosol emissions in Asia in the year 2000, *J. Geophys. Res.-Atmos.*, 108, 8809, <https://doi.org/10.1029/2002JD003093>, 2003.
- UNECE: United Nations Economic Commission for Europe, State of Europe's forests 2011 – Status and Trends in Sustainable Forest Management in Europe, available at: http://www.unece.org/fileadmin/DAM/publications/timber/Forest_Europe_report_2011_web.pdf (last access: 6 October 2016), 2011.
- Vardag, S. N., Gerbig, C., Janssens-Maenhout, G., and Levin, I.: Estimation of continuous anthropogenic CO₂: model-based evaluation of CO₂, CO, δ¹³C(CO₂) and Δ¹⁴C(CO₂) tracer methods, *Atmos. Chem. Phys.*, 15, 12705–12729, <https://doi.org/10.5194/acp-15-12705-2015>, 2015.
- Wang, H., Jacob, D. J., Kopacz, M., Jones, D. B. A., Suntharalingam, P., Fisher, J. A., Nassar, R., Pawson, S., and Nielsen, J. E.: Error correlation between CO₂ and CO as constraint for CO₂ flux inversions using satellite data, *Atmos. Chem. Phys.*, 9, 7313–7323, <https://doi.org/10.5194/acp-9-7313-2009>, 2009.
- Zbinden, R. M., Thouret, V., Ricaud, P., Carminati, F., Cammas, J.-P., and Nédélec, P.: Climatology of pure tropospheric profiles and column contents of ozone and carbon monoxide using MOZAIC in the mid-northern latitudes (24° N to 50° N) from 1994 to 2009, *Atmos. Chem. Phys.*, 13, 12363–12388, <https://doi.org/10.5194/acp-13-12363-2013>, 2013.