

Supplement of Atmos. Chem. Phys., 19, 9865–9885, 2019
<https://doi.org/10.5194/acp-19-9865-2019-supplement>
© Author(s) 2019. This work is distributed under
the Creative Commons Attribution 4.0 License.



Supplement of

Emissions of halocarbons from India inferred through atmospheric measurements

Daniel Say et al.

Correspondence to: Daniel Say (dan.say@bristol.ac.uk)

The copyright of individual parts of the supplement might differ from the CC BY 4.0 License.

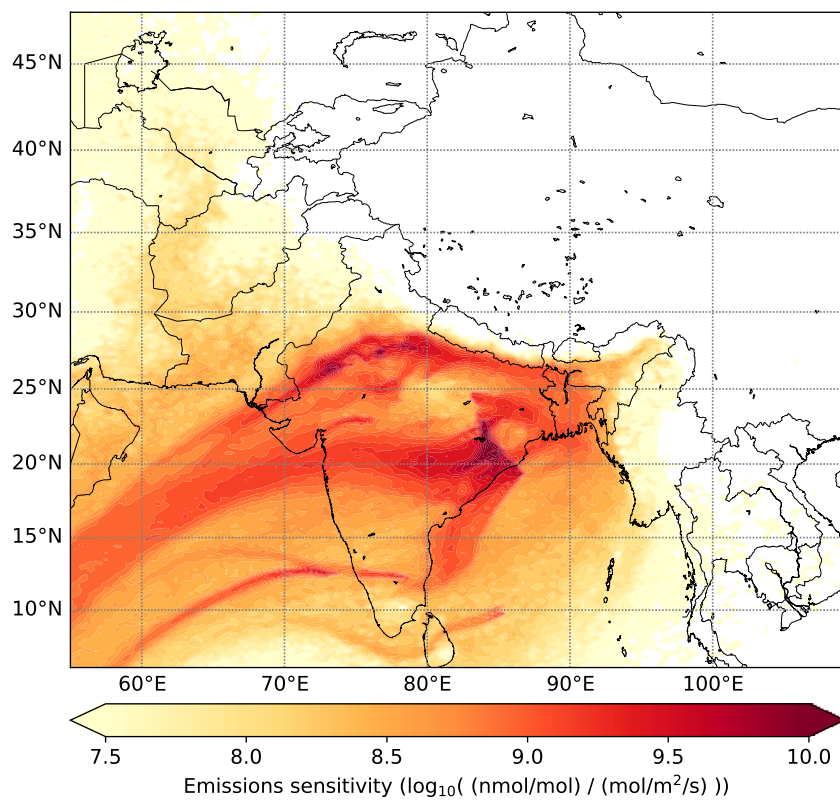


Figure S1. Average sensitivity to surface emissions from all samples collected over India across the entire NAME model domain.

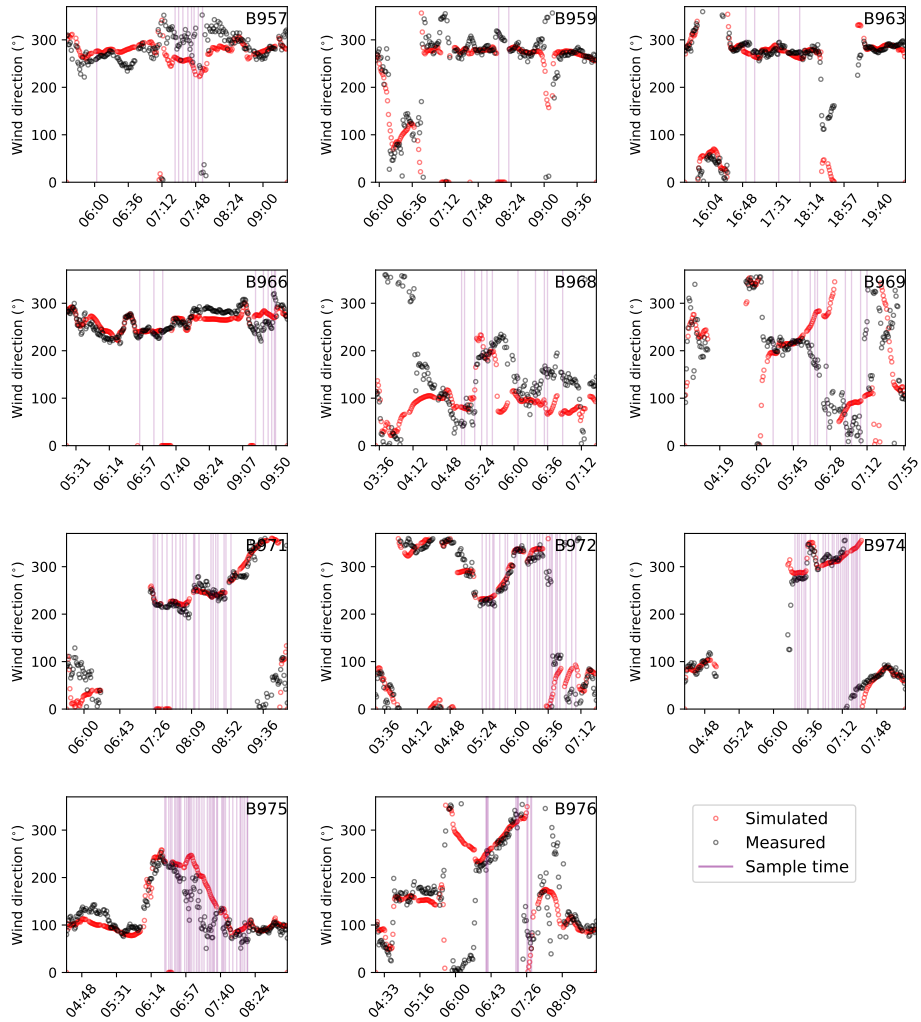


Figure S2. Comparison of wind direction ($^{\circ}$), as measured from the research aircraft (black circles) with those simulated by the NAME model (red circles), for each flight on a minute by minute basis. The points in time at which samples were collected are indicated by vertical purple lines.

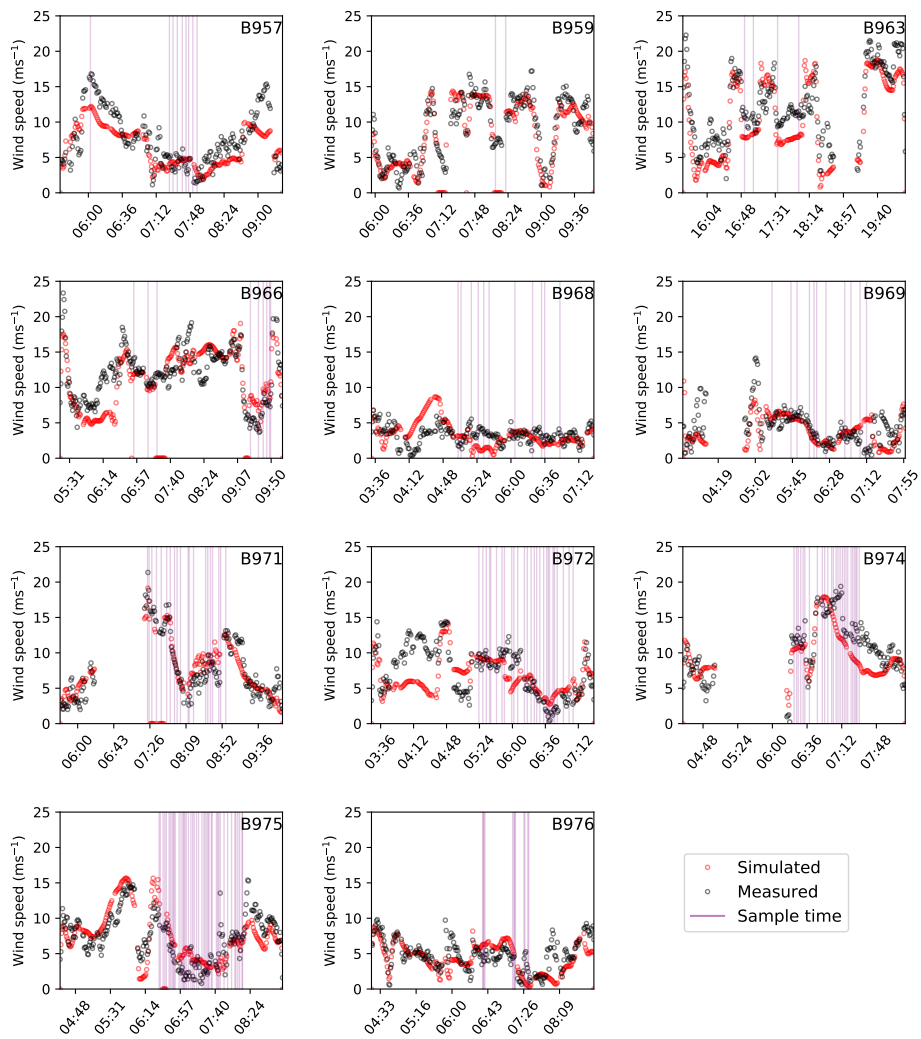


Figure S3. Comparison of wind speed (m s^{-1}), as measured from the research aircraft (black circles) with those simulated by the NAME model (red circles), for each flight on a minute by minute basis. The points in time at which samples were collected are indicated by vertical purple lines.

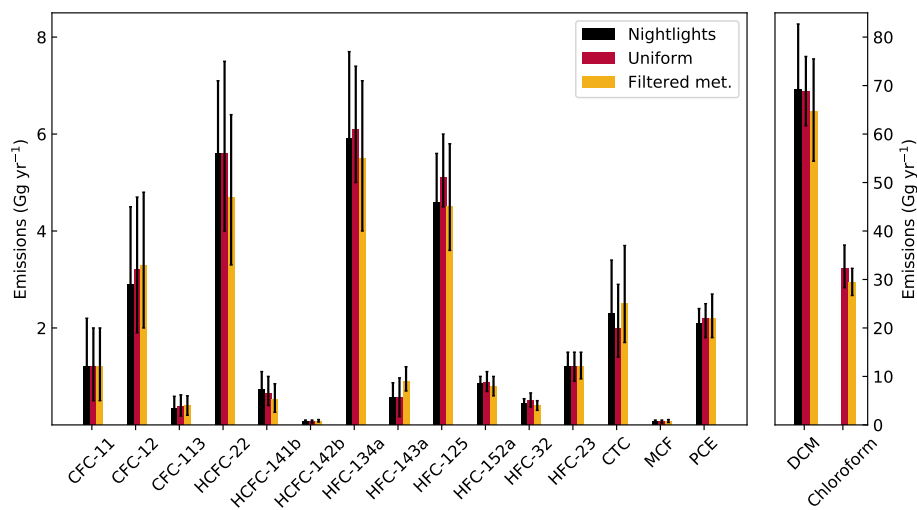


Figure S4. Comparison of posterior NCI halocarbon emissions estimates. Black bars are based on prior emissions distributed using the NOAA night lights distribution; red bars are based on prior emissions distributed using uniformly across the model domain; yellow bars are based on the NOAA night lights distribution, but has removed observations where the observed and model simulated wind speed/direction differed by more than 20% removed. Error bars represent the 5th – 95th percentiles of the posterior PDF. Note that DCM and chloroform are presented on their own y-axis for clarity.