

Supplement of Atmos. Chem. Phys., 20, 969–994, 2020
<https://doi.org/10.5194/acp-20-969-2020-supplement>
© Author(s) 2020. This work is distributed under
the Creative Commons Attribution 4.0 License.



Supplement of

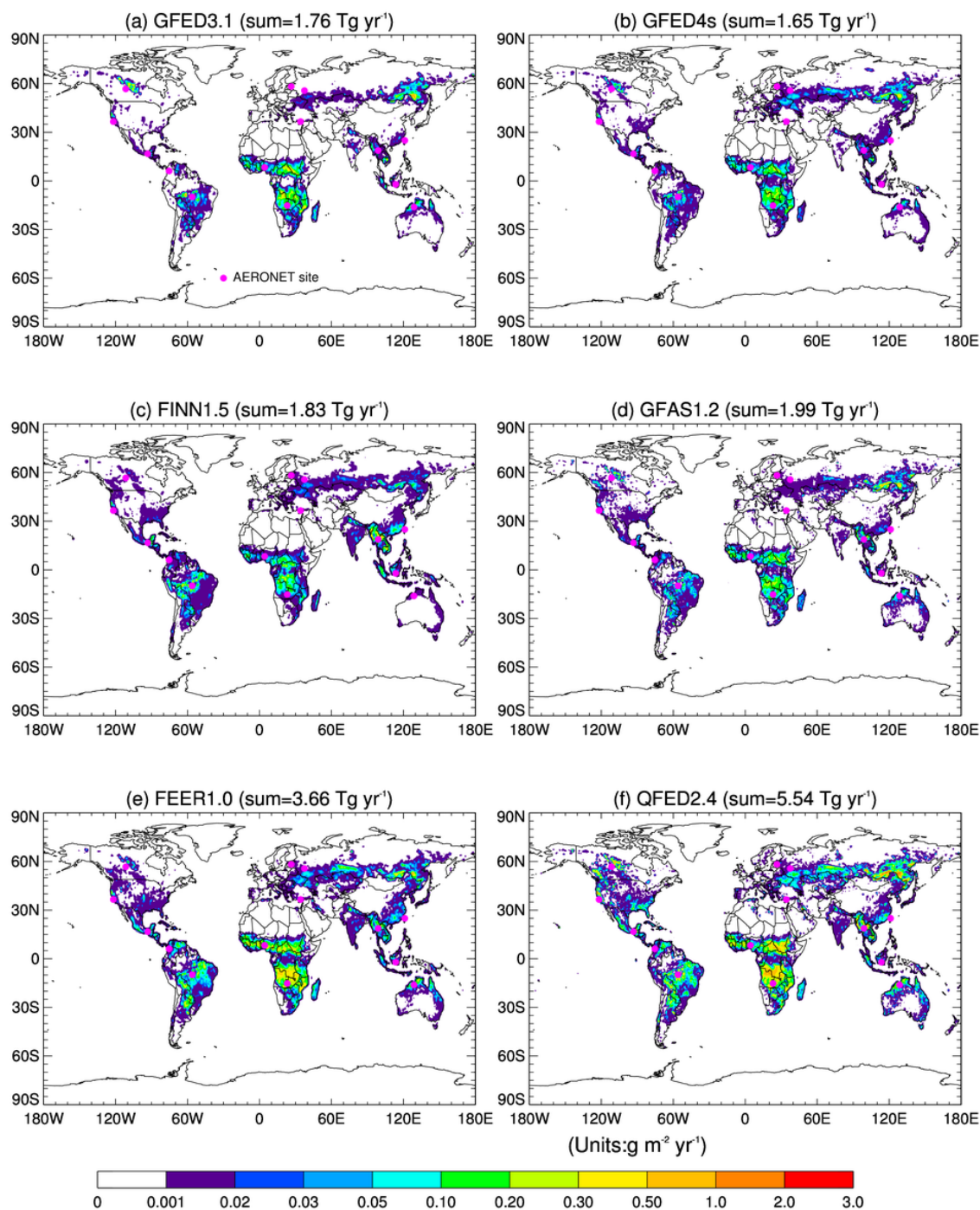
Six global biomass burning emission datasets: intercomparison and application in one global aerosol model

Xiaohua Pan et al.

Correspondence to: Xiaohua Pan (xiaohua.pan@nasa.gov)

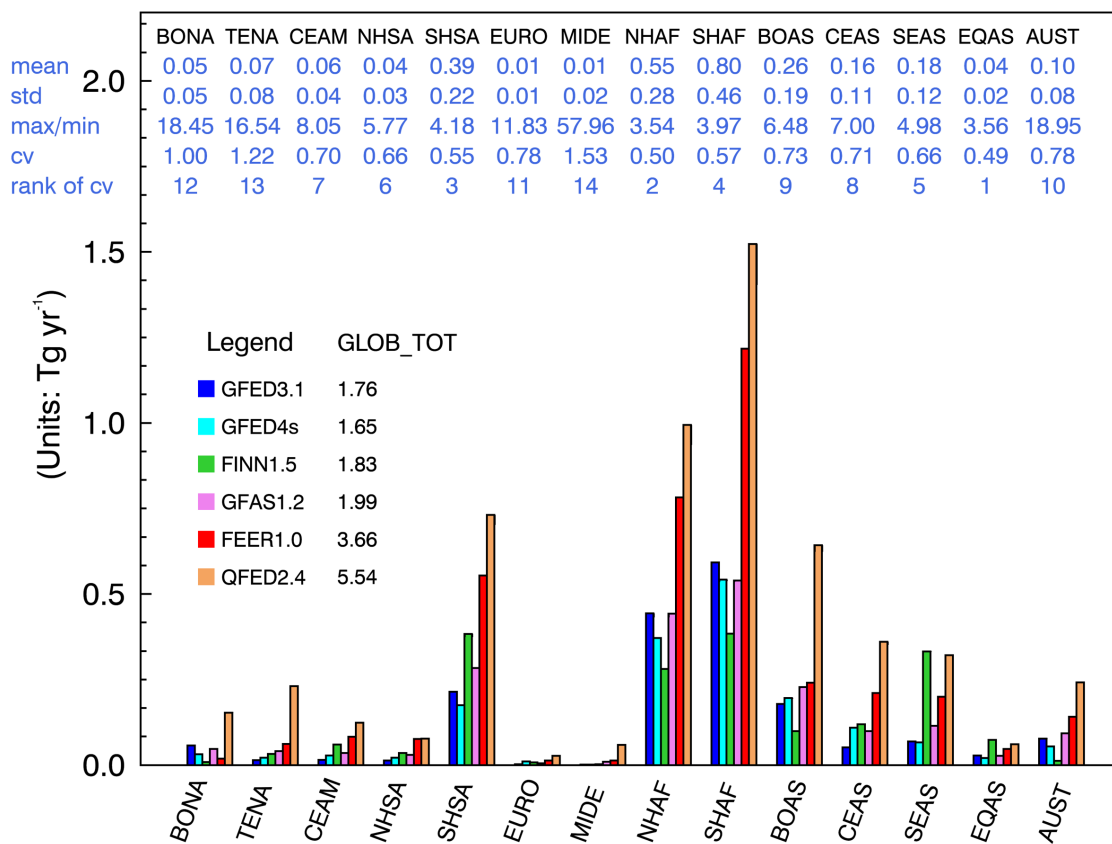
The copyright of individual parts of the supplement might differ from the CC BY 4.0 License.

BC biomass burning emission for 2008



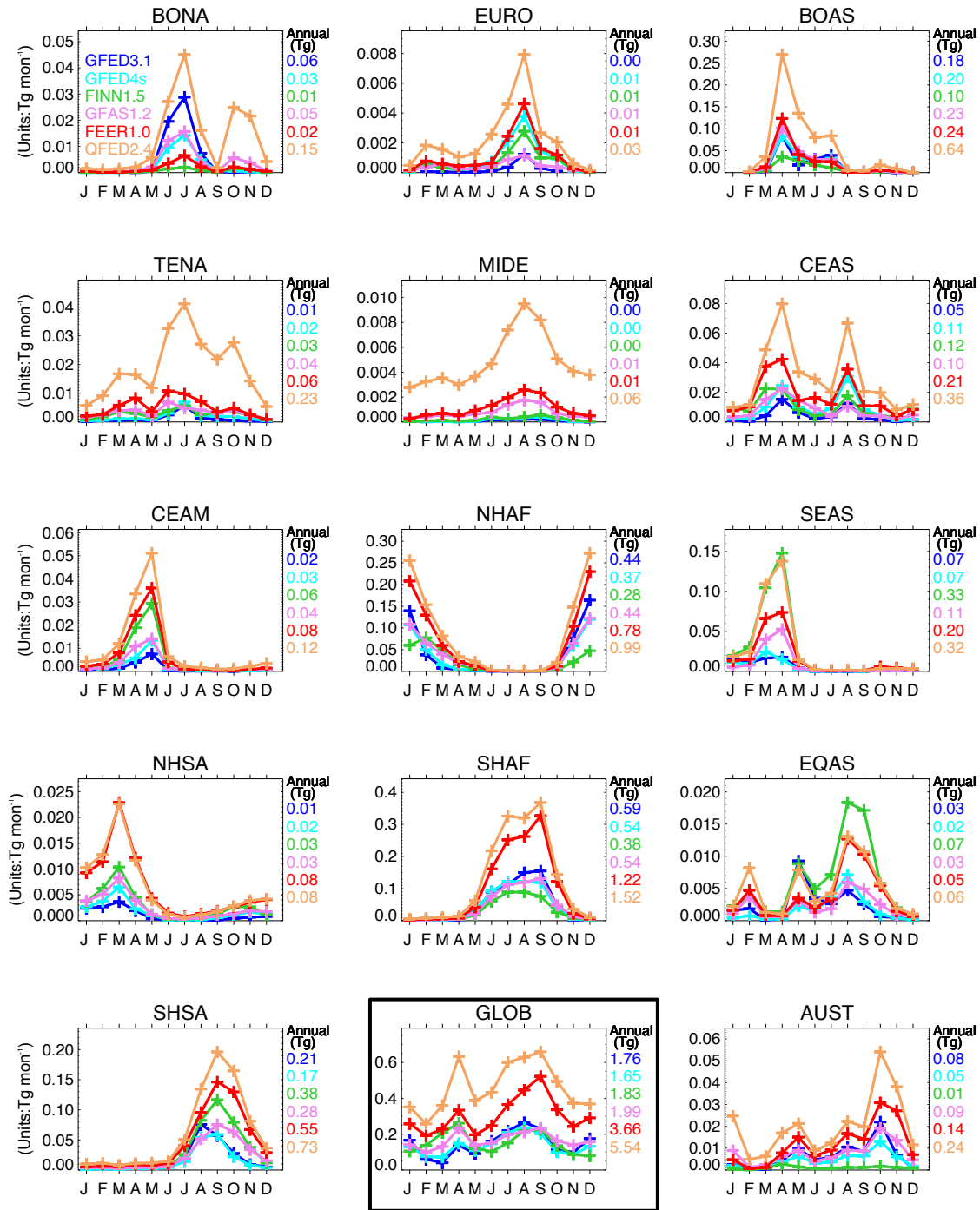
1512
 1513 Figure S1. The spatial distribution of annual total black carbon (BC) biomass burning emissions
 1514 for 2008 estimated by six biomass burning emission datasets. The global total amount is indicated
 1515 in the parentheses. The fourteen selected AERONET sites are labeled as magenta dots.

BC biomass burning emission for 2008



1516
 1517 Figure S2. The regional annual total black carbon (BC) biomass burning emissions for 2008 in six
 1518 biomass burning emission datasets in 14 regions (units: Tg yr⁻¹). The global annual total amount
 1519 is listed after the name of each dataset (GLOB_TOT). Relevant statistics for the six BB emission
 1520 datasets in each region are also listed at the top of the panel in blue under the short name of each
 1521 region, with the mean of the six BB emission datasets in the first row. Three different methods to
 1522 measure the dispersion of the six BB emission datasets are shown as well: one absolute method,
 1523 i.e., the standard deviation (std) in the second row, and two relative methods, i.e., the ratio of max
 1524 (maximum) to min (minimum) shown in the third row, and the coefficient of variation (cv),
 1525 defined as the ratio of the std to the mean, in the fourth row. The rankings of the regions
 1526 reflecting the dispersion of the BB emissions datasets according to cv are shown in the fifth row
 1527 (i.e., a ranking of 1 means that this region shows the least spread among the six BB emissions
 1528 datasets, while a ranking of 14 indicates this region has the largest spread in the 14 regions).
 1529

Monthly variation of BC biomass burning emission for 2008



1530
1531
1532
1533
1534
1535

Figure S3. Monthly variation of black carbon (BC) biomass burning emissions for 2008 in six biomass burning emission datasets in 14 regions and the global (GLOB, highlighted with a black box). The annual total emission is listed in the right side of each panel.

1536
1537
1538

Table S1. The regionally-averaged monthly mean AOD from MISR along with model biases (i.e., model minus MISR) in seven model experiments, i.e., NOBB, GFED3.1, GFED4s, FINN1.5, GFAS1.2, FEER1.0, and QFED2.4, for September and April 2008.

Dataset	BONA	TENA	CEAM	NHSA	SHSA	EURO	MIDE	NHAF	SHAF	BOAS	CEAS	SEAS	EQAS	AUST	GLOB
September 2008															
MISR	0.127	0.129	0.133	0.141	0.188	0.139	0.334	0.411	0.331	0.135	0.219	0.257	0.138	0.085	0.218
NOBB	0.04	0.011	-0.031*	-0.083	-0.132	0.084	-0.013	-0.05	-0.283	0.043	0.053	0.025	-0.047	-0.031	-0.029
GFED3.1	0.042	0.013	-0.031	-0.074	-0.078	0.085	-0.012	-0.046	-0.178	0.048	0.055	0.026	-0.039	-0.02	-0.012
GFED4s	0.044	0.014	-0.031	-0.075	-0.081	0.085	-0.012	-0.047	-0.208	0.047	0.056	0.025	-0.04	-0.023	-0.015
FINN1.5	0.041	0.013	-0.031	-0.07	-0.04	0.08	-0.013	-0.047	-0.21	0.045	0.05	0.016	-0.033	-0.025	-0.012
GFAS1.2	0.042	0.013	-0.031	-0.074	-0.08	0.08	-0.013	-0.047	-0.208	0.046	0.05	0.016	-0.029	-0.02	-0.016
FEER1.0	0.044	0.016	-0.03	-0.061	-0.021	0.088	-0.009	-0.039	-0.079	0.049	0.061	0.027	-0.032	-0.01	0.006
QFED2.4	0.058	0.04	-0.023	-0.058	0.02	0.097	-0.004	-0.035	-0.044	0.058	0.068	0.028	-0.029	-0.002	0.02
April 2008															
MISR	0.192	0.16	0.182	0.207	0.067	0.148	0.381	0.446	0.096	0.221	0.324	0.363	0.118	0.049	0.242
NOBB	-0.041	-0.016	-0.083	-0.086	-0.016	0.077	-0.059	-0.082	-0.042	-0.005	0.017	-0.074	-0.028	-0.004	-0.029
GFED3.1	-0.023	-0.008	-0.077	-0.082	-0.014	0.079	-0.058	-0.078	-0.04	0.104	0.055	-0.057	-0.027	-0.002	-0.015
GFED4s	-0.026	-0.008	-0.076	-0.081	-0.015	0.081	-0.057	-0.079	-0.039	0.095	0.05	-0.063	-0.027	-0.002	-0.016
FINN1.5	-0.031	-0.006	-0.056	-0.072	-0.013	0.075	-0.055	-0.068	-0.037	0.041	0.069	0.014	-0.024	-0.002	-0.008
GFAS1.2	-0.014	-0.005	-0.07	-0.075	-0.014	0.073	-0.057	-0.073	-0.039	0.164	0.07	-0.058	-0.025	-0.001	-0.008
FEER1.0	-0.017	0.003	-0.054	-0.059	-0.011	0.089	-0.053	-0.068	-0.036	0.162	0.083	-0.028	-0.024	0	-0.001
QFED2.4	0.018	0.027	-0.026	-0.054	-0.008	0.099	-0.047	-0.059	-0.032	0.329	0.17	0.038	-0.022	0.004	0.031

1539
1540
1541

*Highlighted in blue if negative bias.