



Supplement of

Microphysical processes producing high ice water contents (HIWCs) in tropical convective clouds during the HAIC-HIWC field campaign: evaluation of simulations using bulk microphysical schemes

Yongjie Huang et al.

Correspondence to: Wei Wu (weiwu@ou.edu)

The copyright of individual parts of the supplement might differ from the article licence.

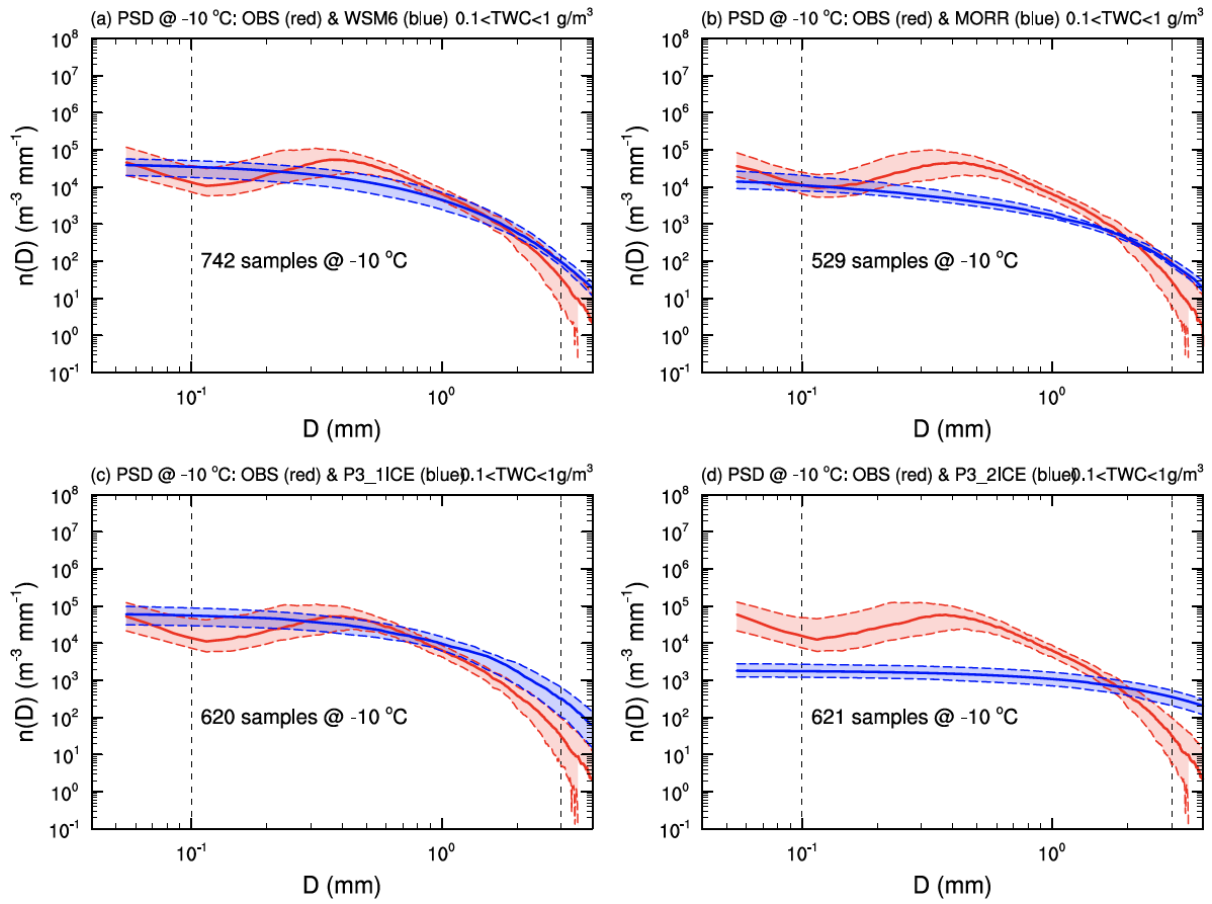


Fig. S1. Observed (red) and simulated (blue, a: WSM6, b: MORR, c: P3-1ICE, d: P3-2ICE) ice particle size distributions for $0.1 \text{ g/m}^3 < \text{TWC} < 1 \text{ g/m}^3$ at the level of $-10 \text{ }^\circ\text{C}$. The red and blue dashed lines indicate the 25th and 75th percentiles, and the red and blue solid lines represent the median.

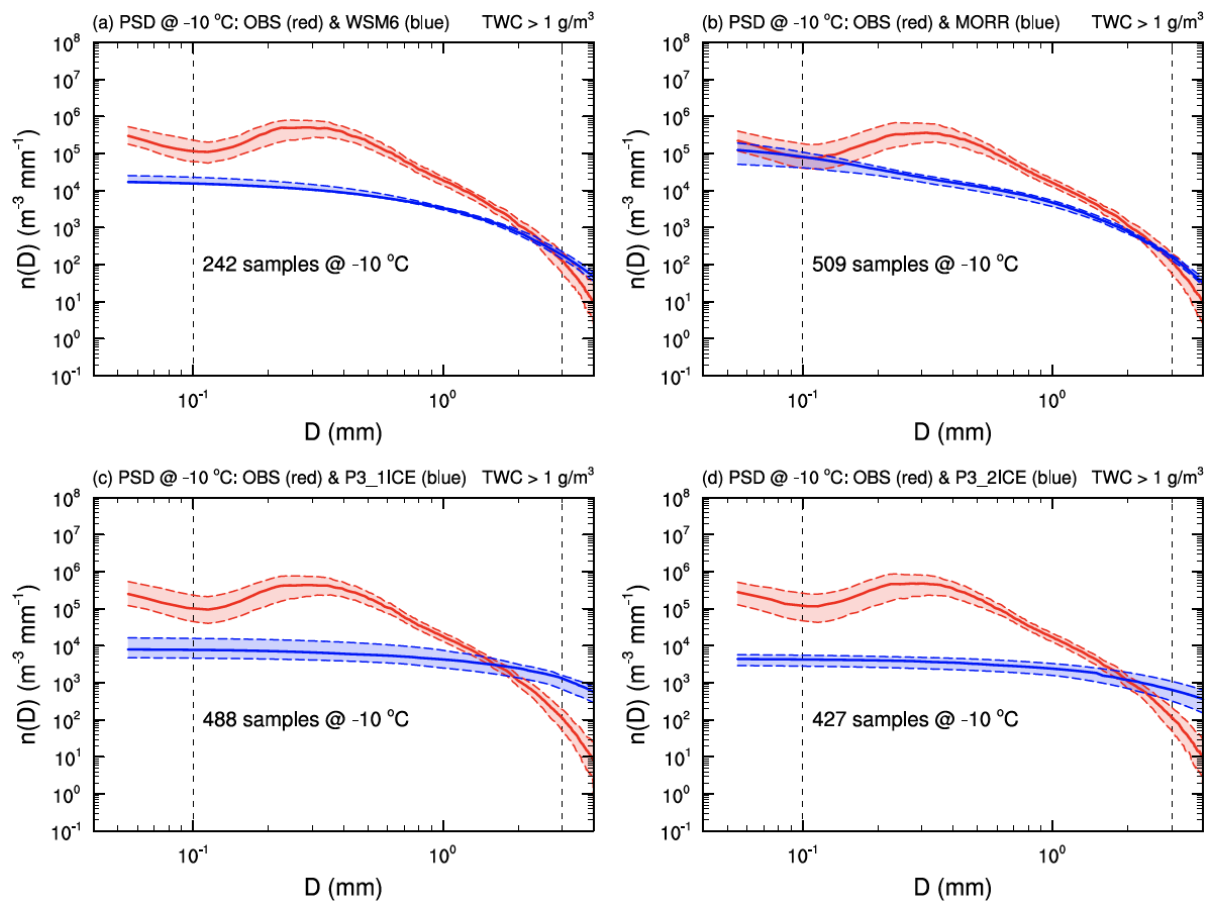


Fig. S2. Observed (red) and simulated (blue, a: WSM6, b: MORR, c: P3-1ICE, d: P3-2ICE) ice particle size distributions for TWC > 1 g/m³ at the level of -10 °C. The red and blue dashed lines indicate the 25th and 75th percentiles, and the red and blue solid lines represent the median.