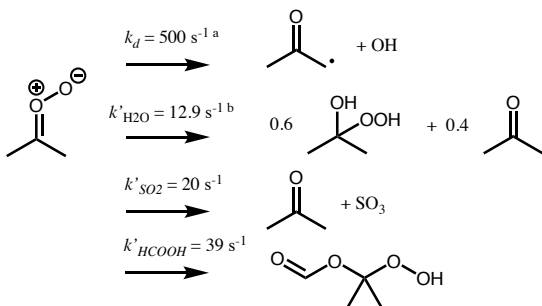
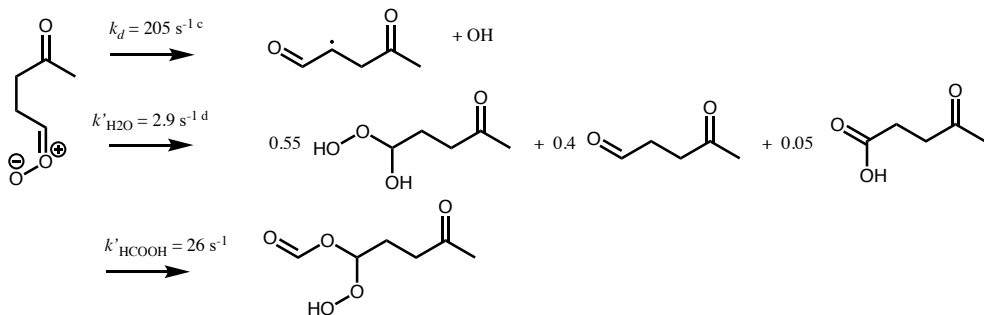


Bimolecular rate coefficients $(10^{11} \text{ cm}^3 \text{ s}^{-1})$ $k_{\text{SO}_2} = 16$ $k_{\text{RCOOH}} = 31$ $k_{\text{NO}_2} = 0.2$ $k_{\text{HCl}} = 4.6$ $k_{\text{HNO}_3} = 54$ **Bimolecular rate coefficients** $(10^{11} \text{ cm}^3 \text{ s}^{-1})$ $k_{\text{SO}_2} = 2.6$ $k_{\text{RCOOH}} = 21$ $k_{\text{NO}_2} = 0.2$ $k_{\text{HCl}} = 4.6$ $k_{\text{HNO}_3} = 54$ **Bimolecular rate coefficients** $(10^{11} \text{ cm}^3 \text{ s}^{-1})$ $k_{\text{SO}_2} = 14$ $k_{\text{RCOOH}} = 38$ $k_{\text{NO}_2} = 0.2$ $k_{\text{HCl}} = 4.6$ $k_{\text{HNO}_3} = 54$ 