

## Authors' response to Anonymous Referee #1

We would like to thank the Anonymous referee #1 for his/her valuable comments and suggestions. All the comments have been taken into account and the manuscript has been revised accordingly. Below, the reviewer's comments are written in italics and followed by authors' responses.

### General comments

*The manuscript "In-cloud measurements highlight the role of aerosol hygroscopicity in cloud droplet formation" investigated the hygroscopic growth distribution of particles at three sizes in cloud events and the hygroscopicity-dependent droplet activation at a tower station in Puijo, Finland. The authors found the bimodal hygroscopic growth factor distribution. This study further examined the changes of droplet activation properties if the less hygroscopic particle fractions have the same hygroscopicity as the higher hygroscopic fractions. By this, the manuscript highlighted the important role of chemical composition, namely hygroscopicity, in cloud droplet activation. This manuscript is generally well written and provides an evaluable case study on the role of chemical composition in cloud droplet activation. Together with other previous studies, it helps understand the role of size and chemical composition in CCN activation in a balanced way. Realizing that both size and chemical composition are important in CCN activation rather than over-stressing one over the other benefit the CCN studies. But before it is published on ACP, the manuscript need address the following questions.*

- 1. Some important details need further clarification. For example, in Pg. 4, lines 14. The authors stated that "full data inversion was applied..., including the corrections for sampling losses, multiple charge probabilities, instrument transfer function and particle count efficiencies". The corrections are important for the data evaluation, but it is not clear for readers. These details should be provided in the Supplement or at minimum be referred to specific references in a detailed way. Another example is that how the D50 in Fig. 2 and D50 in Fig. 4 were exactly derived is missing. And " $f_{act,DMPS}(D_p)$ " in Eq. 8 was not defined. More examples are included in the "specific comments" part.*

**Response:** Regarding the reviewer's comment on DMPS inversion and corrections, we have added a reference to Wiedensohler et al. (2012) summarizing the requirements for DMPS data evaluation and inversion in detail. In addition, the D50 values were obtained from the DMPS and HTDMA derived activation curves via linear interpolation. This is now clarified in the text.

- 2. The authors attributed the "less hygroscopic" particles to be "originating from local anthropogenic sources". In the conclusion, it was stated that "our result clearly demonstrates the importance of correct treatment of anthropogenic aerosols, their hygroscopicity and the effect of atmospheric aging, when estimating the CCN concentration." I guess the authors specially meant the anthropogenic organic aerosol and carbonaceous aerosol since the  $(NH_4)_2SO_4$  or  $NH_4NO_3$  are highly hygroscopic. While I agree it is important to correctly treat aerosols with both low and high hygroscopicity, it should also be noted that the biogenic secondary organic aerosols can also have a low kappa (e.g around 0.1 as in Fig.2). They could also contribute to the total particles even when the winds were from "anthropogenic" sectors since air masses could pass over the forest regions before reaching the measurement site (a backward trajectory may help clarify whether this could be true). Moreover, without detailed aerosol chemical composition for source apportion, it is only a plausible speculation here that the aerosol is "originating from local anthropogenic emission. I suggest the authors to use more precise wording here in the conclusion and in the abstract.*

**Response:** With the sentence “our result clearly demonstrates the importance of correct treatment of anthropogenic aerosols, their hygroscopicity and the effect of atmospheric aging, when estimating the CCN concentration” we refer to anthropogenic organics. We have clarified this in the corrected manuscript. As pointed out by the referee we can’t exclude the contribution of biogenic organics in non-activated fraction. Nonetheless, according to a wind sector analysis (see figures S2-S4), the two highway sectors were characterized by higher  $f_{GF<1.25}$  than the clean sectors indicating clear contribution of traffic on the increased fraction of less hygroscopic particles. We have modified the text both in the abstract and in the conclusion section accordingly.

## Specific comments

1. **Comment:** Pg. 1, line 13, as mentioned as above, “reflecting the varying presence of fresh anthropogenic particle emission” is based on plausible speculation. Some hedge words are recommended here.

**Response:** Text modified.

2. **Comment:** Pg. 4, line 22, please define the “Vienna type DMA”.

**Response:** We have added a reference to Winklmayr et al. (1991) describing the basic characteristics of Vienna type DMAs.

3. **Comment:** Sect. 2.4, What is the residence time of the particles in the humidifier?

**Response:** The residence time inside the humidifier was approximately 0.2 seconds, after which the particles spent  $\sim 2$  s in elevated humidity before being size selected by DMA2. This piece of information is now added to the manuscript.

4. **Comment:** Pg. 6, line 22 Eq. 8, as mentioned above, “ $f_{act,DMPS}(D_p)$ ” was not defined.

**Response:** The DMPS derived activation efficiency,  $f_{act,DMPS}(D_p)$ , is now defined both textually and with an equation.

5. **Comment:** Pg. 8, line 1, “...during the changing inlet period...”, if I understand correctly, the inlet alternated every 6 min between the total aerosol and interstitial aerosol measurement. By using “changing inlet period”, did the authors suggest there were some periods when inlet was not changing? Please clarify.

**Response:** Yes, the DMPS was connected to the twin inlet system with an automated valve that was switching between the two sample lines in 6-minute intervals. This setup was untouched through the campaign.

In contrast, the HTDMA was attached to the twin inlet system only for a 4-week sub-period through an external valve system (different from the one operating the DMPS). For the sake of clarity, this period is now defined as a “twin inlet period” and referred as such through the paper. During the campaign days prior to and after the twin inlet period, the HTDMA was sampling only from the total line.

6. **Comment:** Pg. 9 lines 4-5, “... the less hygroscopic particle mode remains almost non-activated” is not fully convincing to me. From event #1 and # 3, some fractions (12-33%) of the particles still activated. What about other clouds events in the 15 events? The activated fractions are typically around 0 or as in event #2 or more like event #1 and #3? Maybe re-phase this sentence, saying something like “the activated fraction is much lower (value x-value y%)”.

**Response:** In total, nine cloud events were observed during the twin inlet period. Three of them were included in the original manuscript and one of them was characterized by negligible less hygroscopic fraction. For the five remaining cloud events, the activated fractions ( $GF < 1.25$ ) were 21-20-0-19-0 (%) and 27-25-0-17-0 (%) at 120 and 150 nm, respectively. Although these values are very similar to those reported in the original manuscript, their reliability can't be fully confirmed due to low data coverage and/or disagreement between the HTDMA and DMPS derived total activated fractions.

After revising the calculation method based on comments by Dr. Martin Gysel, we have now presenting the data for four different cloud events. This part of the text is re-written keeping in mind the reviewer's comments above.

7. **Comment:** A related question to the last question. In Fig. 1, what are the unit and value of y-axis in these graphs? I suppose the value is the number concentration of particle with given GF value. If I understand correctly, in the bottle middle panel of Fig.1, the residue concentration divided by total concentration would yield the activated fraction as a function of GF. Integrating the residue concentration for the range of  $GF < 1.25$  divided by the integrated total concentration would yield the activated fraction of particle with  $GF < 1.25$  ( $f_{act,GF < 1.25}$ ). It seems that the values derived in this way would not be close to zero for either 120 nm particles or 150 nm particles. Could the authors explain this?

**Response:** In Fig. 1, the GF distributions are plotted as probability density functions. This means that the initial GF distributions are normalized according to their actual particle number concentrations. Thus, their integrated surface areas are always equal to one. As a result, the y-axis is actually unitless, and estimating the activated fractions would require additional information about the total and interstitial particle concentrations.

8. **Comment:** Pg. 9, line 32, “... in line with the hygroscopic discrepancies...”. It is not clear for me what the authors meant by “discrepancies”. Do they mean the different activated fraction between the less and more hygroscopic particles? If so, please phrase it precisely.

**Response:** We agree that this statement wasn't perfectly clear. It is now rephrased as “in line with our observations on the distinctive hygroscopicity of activated and non-activated particles”

9. **Comment:** Pg. 10, lines 15-17, “...hygroscopicity of accumulation mode particles explained up to 57-58% of the observed variance in  $D_{50}$ ,...especially, the varying supersaturation”, from Fig. 2, the middle and bottle panel, most data points are converged to be close to the line of  $D_{50} = Ak^{-1/3}$ . Does this indicate that the variability of the supersaturation is quite small? And do these graphs include all the data from 15 clouds events?

**Response:** As we report later in the paper, the estimated supersaturations ranged from 0.16 to 0.29%. We agree that this range of variation is reasonably narrow compared to global observations, and larger fluctuations would definitely lead to increased deviation.

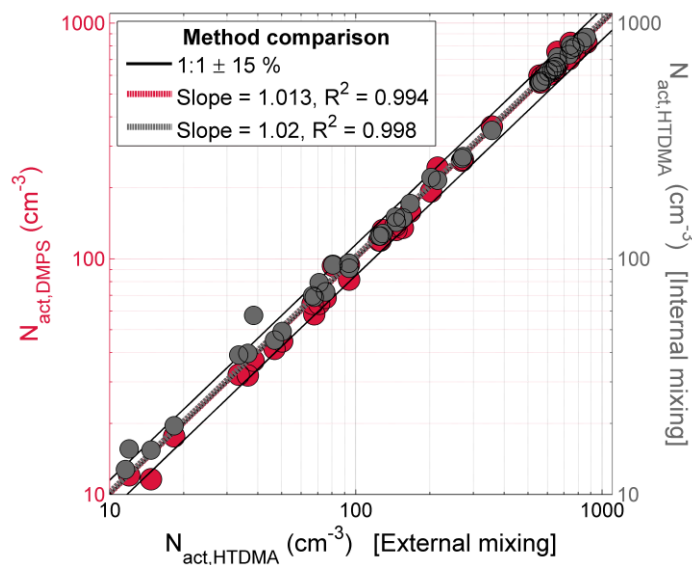
Figure 2 includes data from all the observed cloud hours. This is now clarified in the text.

**10. Comment:** Pg. 10, lines 20-21, the authors stated that “...the data points with considerable uncertainties were omitted...”. Could the authors precisely describe what data were classified as ones “with considerable uncertainties” since how the data were omit would affect the correlation in Fig. 3. Also does the “cloud droplet nuclei spectra” refer to the spectra derived from DMPS? Please clarify.

**Response:** Regarding the omitted cases, the following sentences were added:

“Reproducibility of the DMPS derived activation curves and cloud droplet nuclei spectra was confirmed visually, and the data points with considerable differences were omitted from the following analyses. In most of these cases, the estimated activation curves appeared clearly steeper than the measured ones, leading to both an underestimation of activated fraction at  $D_p < D_{50}$  and an overestimation of activated fraction at  $D_p > D_{50}$ . Alternatively, some of the estimated curves managed to reproduce the correct behavior at smaller sizes ( $D_p < 150$  nm) but overestimated the activation at the size range of extrapolated GF-PDFs. Although these uncertainties caused only a small net bias to droplet estimations, they indicate that the estimated GF surfaces may have failed to replicate the real ambient conditions.”

As mentioned above, these uncertainties didn’t really increase the bias in droplet predictions (see Fig. 1 attached below). However, they indicate that the linear interpolation between the measured GF-PDFs and furthermore, extrapolation towards larger sizes, may have failed to predict the size-dependence adequately. Therefore, they must be removed from the data set to minimize the uncertainties in the following analyses (Sect. 3.5 in the manuscript).



**Fig. 1**

**11. Comment:** Pg. 13, line 4, as mentioned above, “the less hygroscopic particles originating from local anthropogenic emissions” is only a speculation. I suggest to add a hedge word here, e.g. likely.

**Response:** Text modified.

## Technical comments

**1. Comment:** Pg 4, line 11, “The instrument was...” should be “instruments were”.

**Response:** Corrected as suggested.

**2. Comment:** Pg 5, line 1, “...using the TDMAinversion...” , a space is missing after TDMA.

**Response:** This is probably just an accidental misunderstanding. We are actually writing: “...by using the TDMAinv inversion toolkit”.

**3. Comment:** Pg. 10, line 2, “... the above results...” should be “...the results above...”.

**Response:** Rephrased as: “According to our observations...”

**4. Comment:** Pg. 12, line 1, “... the absolute change in hygroscopicity increased...” , is “hygroscopicity” the right word? Or growth factor?

**Response:** Corrected as suggested.

**5. Comment:** Pg. 12, line 12, “Similarly to our measurement...” should be “similar”.

**Response:** Rephrased as: “Analogous to our observations...”

# In-cloud measurements highlight the role of aerosol hygroscopicity in cloud droplet formation

Olli Väisänen<sup>1</sup>, Antti Ruuskanen<sup>2</sup>, Arttu Ylisirniö<sup>1</sup>, Pasi Miettinen<sup>1</sup>, Harri Portin<sup>3</sup>, Liqing Hao<sup>1</sup>, Ari Leskinen<sup>1,2</sup>, Mika Komppula<sup>2</sup>, Sami Romakkaniemi<sup>2</sup>, Kari E. J. Lehtinen<sup>1,2</sup>, Annele Virtanen<sup>1</sup>

5 <sup>1</sup>University of Eastern Finland, Department of Applied Physics, P.O. Box 1627, 70211 Kuopio, Finland

<sup>2</sup>Finnish Meteorological Institute, P.O. Box 1627, 70211 Kuopio, Finland

<sup>3</sup>Helsinki Region Environmental Services Authority, P.O. Box 100, 00066 HSY, Finland

Correspondence to: [A-Annele Virtanen](mailto:annele.virtanen@uef.fi) (annele.virtanen@uef.fi)

**Abstract.** The relationship between aerosol hygroscopicity and cloud droplet activation was studied at the Puijo measurement station in Kuopio, Finland, during the autumn 2014. The hygroscopic growth of 80, 120 and 150 nm particles was measured at 90-% relative humidity with a hygroscopic tandem differential mobility analyzer. Typically, the growth factor (GF) distributions appeared bimodal with clearly distinguishable peaks around 1.0–1.1 and 1.4–1.6. However, the relative contribution of the two modes appeared highly variable reflecting the ~~varying~~<sup>probable</sup> presence of fresh anthropogenic particle emissions. The hygroscopicity-dependent activation properties were estimated in a case study comprising ~~three~~<sup>four</sup> separate cloud events with varying characteristics. At 120 and 150 nm, the activation efficiencies within the low- and high-GF modes varied between 0–~~0.33%~~<sup>–34%</sup> and ~~0.66–0.86%~~<sup>–57%–83%</sup>, respectively, indicating that the less hygroscopic particles remained ~~almost~~<sup>mostly</sup> non-activated, whereas the more hygroscopic mode was predominantly scavenged into cloud droplets. By modifying the measured GF distributions, it was estimated how the cloud droplet concentrations would change if all the particles belonged to the more hygroscopic group. According to ~~the~~ <sup>$\kappa$</sup> -Köhler simulations, the cloud droplet concentrations increased up to 70-% ~~with increasing hygroscopicity%~~ when the possible feedback effects on effective peak supersaturation (between 0.16% and 0.29%) were assumed negligible. This is an indirect but clear illustration of the sensitivity of cloud formation to aerosol chemical composition.

## 1 Introduction

Atmospheric aerosols play a key role in the global climate system. They can affect the Earth's radiation balance either directly by scattering and absorbing the solar radiation, or indirectly, via clouds. Despite their relatively long-known influence pathways, atmospheric aerosols and especially their interactions with clouds, are still recognized as the most important source of uncertainty in the estimates of radiative forcing over the industrial period (IPCC, 2013). Although the climatic sensitivity and clouds are linked via numerous feedback mechanisms, one fundamental key towards a diminished uncertainty is to understand the factors controlling the particle's ability to act as cloud condensation nuclei (CCN).

The particles' ability to activate into cloud droplets ~~under a certain meteorological conditions~~ level of supersaturation depends on their size and chemical composition. The role of particle size is already quite well identified and it's commonly considered as the most important factor. For example, according to the early model calculations by Junge and McLaren (1971) and measurements by Fitzgerald (1973), the shape of the CCN spectrum was predominantly determined by the initial particle size distribution, and compositional variations became significant only when the aerosol was highly insoluble. More recently, Dusek et al. (2006) estimated that the changes in aerosol size distribution explained over 80-% of the observed variance in CCN concentration. Similarly, Ervens et al. (2007) stated that the CCN predictions were the most sensitive to variations in particle size distribution and supersaturation.

Considering the great climatological uncertainty related to aerosol-cloud interactions, such a straightforward relationship between aerosol size distributions and CCN spectra could substantially improve the estimates of the aerosol indirect radiative forcing. However, as Hudson (2007) stated, the estimation by Dusek et al. (2006) was based on rather small variation in chemical composition, which may have led to considerable underestimation of its role in cloud droplet activation. In addition, Quinn et al. (2008) parametrized the aerosol chemical composition by using the mass fraction of hydrocarbon-like organic aerosol (HOA) and combined the results with CCN activity measurements. The results indicated that the uncertainty between the measured and estimated CCN concentrations was up to 50-% when the variations in HOA were neglected.

During the last few decades, a lot of effort has been put into CCN closure studies, i.e. determination of CCN concentration by means of size and composition related properties (Broekhuizen et al., 2006; Conant et al., 2004; Ervens et al., 2007; Fountoukis et al., 2007). CCN closure studies allow to assess the importance of different parameters on cloud droplet activation and therefore, they are an important tool towards a sufficient understanding of the link between atmospheric aerosols and cloud processes. One specific method includes the determination of CCN ~~spectrum~~ spectra by means of hygroscopicity measurements. Under subsaturated conditions (i.e. relative humidity (RH) < 100-%), aerosol hygroscopicity can be characterized by using a parameter called hygroscopic growth factor

$$GF(RH, D_p) = \frac{D_{\text{wet}}(RH, D_p)}{D_p}, \quad (1)$$

where  $D_{\text{wet}}$  is the wet particle diameter at a certain RH and  $D_p$  is the corresponding dry diameter. In principle, GFs reflect the aerosol chemical composition. Pure inorganic salts such as sodium chloride (NaCl) and ammonium sulfate ((NH<sub>4</sub>)<sub>2</sub>SO<sub>4</sub>) are usually associated with elevated growth factors (GF > 1.60 at RH = 90-%), whereas some other species appear clearly less hygroscopic (McFiggans et al., 2006). For example, fresh mineral dust and pure black carbon are almost hydrophobic with typical GFs below 1.05 (Vlasenko et al., 2005; Weingartner et al., 1997; Liu et al., 2013). In atmospheric conditions, the average GFs usually vary between 1.0 and 1.8, and the GF distributions may consist of several independent modes originating from various sources of particulate matter (Ferron et al., 2005; Fors et al., 2011; Sjogren et al., 2008; Liu et al., 2011; McFiggans et al., 2006).

In order to better understand the relationship between cloud droplet activation, aerosol chemical composition and hygroscopicity, we organized an intensive measurement campaign at the Puijo measurement station in Kuopio, Eastern Finland, during the autumn 2014 (Puijo Cloud Experiment 2014). Along with the Global Atmospheric Watch (GAW) stations such as Pallas, Finland (Komppula et al., 2005), Jungfraujoch, Switzerland (Sjogren et al., 2008) and Puy-de-Dôme, France (Asmi et al., 2012), the Puijo station is one of the few measurement sites, where long-term continuous in situ measurements on aerosol-cloud interactions are being carried out. Therefore, it provides an established base for detailed aerosol and cloud studies. Utilizing the conducted in-cloud measurements, this paper aims to identify the hygroscopicity-dependent activation properties of a cloud-forming aerosol population and study the effects of varying chemical composition on cloud droplet formation.

## 10 **2 Methods**

### **2.1 Measurement site**

The measurement campaign took place at the Puijo SMEAR IV station in Kuopio, Finland (around 340 km to NE from Helsinki) between 17 September and 4 November 2014. The measurement station is located at the top of the Puijo observation tower (62°54'34'' N, 27°39'19'' E) approximately 224 m above the surrounding lake level (Leskinen et al., 2009; Ahmad et al., 2013; Portin et al., 2014). The station was established in 2005 and since then it has provided continuous data on aerosol and cloud droplet size distributions, aerosol optical properties, atmospheric trace constituents and ~~different~~various weather parameters. Due to the diverse surroundings, the measurement site can be characterized as a semi-urban environment. The eastern side of the tower (0–215°) includes several local pollution sources such as a paper mill in the northeast, the city center in the southeast, a heating plant in the south and the two main roads in south–north direction, as well as residential areas with occasional domestic biomass combustion. By contrast, the western sector (215–360°) has no important local sources besides the relatively small residential areas. For more detailed overview of the station and local pollution sources, see Leskinen et al. (2012) and Portin et al. (2014).

### **2.2 Weather data and cloud events**

Temperature, visibility, wind speed, wind direction, precipitation, air pressure and relative humidity were measured continuously during the campaign. Visibility and precipitation were measured with a Vaisala FD12P weather sensor, wind speed and direction with an ultrasonic two-dimensional anemometer (Thies UA2D), and temperature and relative humidity with a Vaisala HMT337 temperature and humidity transmitter. Based on meteorological conditions, the measurement period was divided into cloudy and cloud-free sub-periods. Cloud events were defined as continuous periods (duration more than 1 h) with visibility below 200 m. For cloud-free conditions, the lower visibility limit was set to 8000 m in order to avoid the biasing effects of non-uniform clouds and fog. In addition, the observed events were classified as rainy if the average rain



intensity exceeded  $0.2 \text{ mm h}^{-1}$ . However, these cases were omitted from the analyses, since precipitation removes both activated and non-activated particles from the atmosphere causing a possible source of error for the measurement data.

### 2.3 Twin inlet system and size distribution measurements

5 During the campaign, we utilized a custom made twin inlet system (Portin et al., 2014) consisting of two separate sample lines in order to measure total and non-activated (interstitial) particles separately. The total air inlet had an approximate cut-off diameter of  $40 \text{ }\mu\text{m}$  and the sample line was heated to  $30\text{--}40 \text{ }^\circ\text{C}$ . Due to the heating, liquid water was evaporated from the droplets and residual particles were formed. Thus, when the top of the tower was inside a cloud, the total flow contained both the residual and interstitial particles. Meanwhile, the interstitial sample line was equipped with a  $\text{PM}_{1.0}$  impactor (lower cut-  
10 off limit of  $1 \text{ }\mu\text{m}$ ) to prevent the cloud droplets from entering the sampling system. During cloud-free conditions, both of the inlets sampled the same aerosol population.

Aerosol size distributions from 3 to 800 nm were measured with a twin differential mobility particle sizer (twin-DMPS). ~~Two~~In this setup, two independent DMPSs measured the particle diameters from 3 to 53 nm and from 30 up to 800 nm with aerosol/sheath flow ratios of 1.4:23 and 1:5.5, respectively. The ~~instrument was~~instruments were attached to the twin inlet  
15 system with an automated valve, which was operated to switch between the sampling lines in 6-minute intervals. Consequently, the total measurement time for total and interstitial population was 12 minutes, assuming that the aerosol was not changing during the cycle. Full data inversion was applied to the raw data, including corrections for sampling losses, multiple charging probabilities, instrumental transfer functions and particle counting efficiencies- as recommended by Wiedensohler et al. (2012).

### 2.4 HTDMA experiments

20 Aerosol hygroscopicity under subsaturated conditions was measured with a hygroscopic tandem differential mobility analyzer (HTDMA, Table S1). Briefly, HTDMA consists of two differential mobility analyzers (DMA) and a humidifier. The first DMA (DMA1) selects the dry size of interest and the second DMA (DMA2) coupled with a condensation particle counter (CPC) measures the resulting size distribution, after the nearly monodisperse aerosol sample has been exposed to certain RH. During the campaign, the initial dry sizes were 80, 120 and 150 nm and the RH inside the DMA2 ( $\text{RH}_{\text{DMA2}}$ ) was adjusted to  
25  $\sim 90\%$ . Both of the DMAs were 28 cm long Vienna type DMAs (Winklmayr et al., 1991) operated with flow ratios of 1:6, and the RH control of the sheath air inside ~~the~~ DMA2 was achieved by using a closed-loop circulation. The residence time ~~between~~inside the aerosol humidifier ~~and particle sizing was approximately 0.2 s, after which the particles spent  $\sim 2 \text{ s}$  in elevated~~  
RH before entering the DMA2 ~~was  $\sim 2 \text{ s}$ , and the~~ The propagated instrumental uncertainty associated with the measured GFs was approximately  $\pm 4.5\%$ .

30 The ~~instrument~~HTDMA was attached to the ~~changing~~twin inlet system for a 4-week period (26 September – 20 October; hereafter referred as a twin inlet period) in the middle of the campaign. Otherwise, total aerosol was being measured continuously. During the twin inlet period, an external valve system switched between the two sampling lines in 24-minute

intervals. Therefore, the duration of individual size scans was adjusted so that the whole measurement cycle with three initial dry sizes was performed twice between each line change. However, some of the data points had to be removed afterwards because the line change had occurred during an ongoing size scan. In the case of continuous total line measurements, each size scan took 5 minutes.

- 5 The average hygroscopic growth factors and their probability density functions (GF-PDF) were evaluated using the TDMAinv inversion toolkit (Gysel et al., 2009). The procedure calculates the broadening factor of the instrumental transfer function from ~~the~~ dry size measurements and then describes the inverted GF-PDFs as piecewise linear functions. For this purpose, dry size scans with ammonium sulfate particles were performed at low RH before and during the campaign. The inversion algorithm was operated to solve the GF-PDFs with a resolution of  $\Delta GF = 0.10$  and only the size scans with average  $RH_{DMA2}$  between 88
- 10 % and 92-% were taken into account in the analysis. In addition these data points were corrected to the 90-% target RH by using the built-in  $\gamma$ -model within the inversion toolkit. Briefly,  $\gamma$ -correction adjusts the measured growth factors to the desired RH by applying ~~the~~ parametrization  $GF = (1-RH)^{-\gamma}$ , where  $\gamma$  is first calculated from the original measurement data and then substituted backwards to obtain the RH corrected ~~growth factor~~ GF.

## 2.5 Derivation of $N_{act,HTDMA}$

- 15 According to the Köhler theory (Köhler, 1936), the equilibrium saturation ratio,  $S_e S_{eq}$ , over a liquid droplet can be calculated by

$$S_e S_{eq} = a_w \exp\left(\frac{4M_w \sigma}{RT \rho_w D_{wet}}\right), \quad (2)$$

- where  $a_w$  is the water activity,  $M_w$  the molar weight of water,  $\sigma$  the surface tension (here, assumed to be that of water, 0.072 J
- 20  $m^{-2}$ ),  $R$  the universal gas constant,  $T$  the ambient temperature and  $\rho_w$  the density of water. In order to relate the measured growth factors to water activities, we used the  $\kappa$ -Köhler model described by Petters and Kreidenweis (2007). With  $\kappa$ -Köhler model, the water activity can be parametrized as

$$\frac{1}{a_w} = 1 + \kappa \frac{V_{sp}}{V_w}, \quad (3)$$

where  $V_s/V_p$  and  $V_w$  are the ~~soluble~~ dry particle and water volumes, and  $\kappa$  is the hygroscopicity parameter determined as below:

25 
$$\kappa(GF, D_p, RH) = \frac{(GF^3 - 1) \exp\left(\frac{4M_w \sigma}{RT \rho_w D_p GF}\right)}{RH} - GF^3 + 1. \quad (4)$$

Alternatively, the relationship between  $\kappa$  and critical saturation ratio,  $S_c$ , i.e. the maximum of the Köhler curve (Eq. 2), can be related to  $S_c$  approximated by

$$\kappa(D_p, S_c) = \frac{4A^3}{27D_p^3 \ln^2 S_c}, \quad (5)$$

where  $A = 4M_w\sigma/RT\rho_w$ . Thus, by combining the Eqs. (4) and (5) and by assuming a certain value for  $S_c$ , it is possible to estimate the critical growth factor,  $GF_c$ , i.e. the required growth factor for particles with dry size  $D_p$  to become activated at the given supersaturation. Thereafter, the size-resolved activation efficiency  $f_{act,HTDMA}$  can be calculated according to

$$f_{act,HTDMA}(D_p, S_c) = \int_{GF_c(D_p, S_c)}^{\infty} GF\text{-PDF}(GF, D_p) dGF. \quad (6)$$

Furthermore, the available CCN concentration can now be obtained by weighting the measured particle size distribution with the activation efficiency and by integrating over the whole size range:

$$N_{act,HTDMA}(S_c) = \int_{-\infty}^{\infty} f_{act,HTDMA}(D_p, S_c) \frac{dN_{tot}}{d \log D_p} d \log D_p. \quad (7)$$

In order to solve the preceding equation, the GF-PDFs determined for  $D_p = 80, 120$  and  $150$  nm were linearly interpolated to cover the whole size range of interest. This was done by interpolating the GF-PDFs over the measurement range (80–150 nm) and then extrapolating up to 200 nm. In addition, the 80 and 200 nm GF-PDFs were assumed to be representative for particles smaller than 80 nm and larger than 200 nm, respectively.

The procedure follows the principles described ~~by previously by e.g. Kammermann et al. (2010b) and~~ Fors et al. (2011), except that here we did not have an independent HTDMA data point around 200–250 nm. Therefore, extrapolation ~~to~~ towards larger sizes is also the main source of uncertainty. ~~At larger particle sizes, as~~ underestimation of aerosol hygroscopicity could possibly lead to underestimation of  $f_{act,HTDMA}$  and vice versa. ~~Nonetheless, it has to be noted that above 200 nm, hygroscopicity is quite rarely a limiting factor and the most crucial activation characteristics are dependent on particle properties between the 80 nm and 200 nm sizes.~~ Secondly, the method assumes that the subsaturated hygroscopicities are representative for supersaturated conditions. Such an assumption is not always totally valid and discrepancies between the two saturation regimes have been reported based on laboratory and field experiments (Good et al. 2010; Hersey et al., 2014; Jaatinen et al., 2014; Pajunoja et al. 2015). Typically, the subsaturated hygroscopicities can appear somewhat lower than the supersaturated ones, which may result in underestimation of CCN concentration at a fixed supersaturation. On the other hand, for example Jurányi et al. (2013) found a very good closure between the sub- and supersaturated regimes for an externally mixed urban aerosol in Paris, France.

In order to estimate the cloud droplet concentration in atmospherically relevant conditions, the effective peak supersaturation,  $s_{eff, S_{c,eff}}$  (where  $s_{eff} = S_{c,eff} - 1$ ), was approximated by minimizing the difference between the measured (~~DMPS~~) and estimated (~~HTDMA~~) activation curves, i.e. by minimizing the norm

$$|R(S_c)| = \sqrt{\sum_i [f_{\text{act,HTDMA}}(D_{p,i}, S_c) - f_{\text{act,DMPS}}(D_{p,i})]^2}, \quad (8)$$

where  $D_{p,i}$  was limited to vary from 80 to 200 nm. ~~It's~~, and the DMPS derived activation efficiency,  $f_{\text{act,DMPS}}$ , was determined by means of total and interstitial particle size distributions as follows:

$$f_{\text{act,DMPS}}(D_p) = \frac{\frac{dN_{\text{tot}}(D_p)}{d \log D_p} - \frac{dN_{\text{int}}(D_p)}{d \log D_p}}{\frac{dN_{\text{tot}}(D_p)}{d \log D_p}}. \quad (9)$$

- 5 In principle, the effective peak supersaturation can be described as the maximum supersaturation that the particles experience for an adequate time to form stable cloud droplets (Hammer et al. 2014). It's also important to point out that this kind of approach masks the potential discrepancies between the two saturation regimes, and underestimation of supersaturated hygroscopicity ~~will~~would eventually lead to positive bias in  $s_{\text{eff}, S_{c, \text{eff}}}$ .

- In addition to the “externally mixed approach” described above, the cloud droplet concentrations were estimated ~~by~~  
 10 ~~representing~~under an assumption that the ambient aerosol was completely internally mixed. In this approach, the interpolated GF surfaces ~~in terms of size-averaged~~were used to calculate the average hygroscopicity ~~parameters~~parameter  $\kappa_{\text{avg}}(D_p)$ . This (Eq. 4) for each dry size. These values were then compared to critical  $\kappa$  values approximated by using the Eq. (5) and the previously determined  $S_{c, \text{eff}}$ . Furthermore, depending on whether the  $\kappa_{\text{avg}}$  was higher or lower than the respective critical value, the activation efficiency was assumed to be either 1 or 0, respectively. Therefore, this kind of internally mixed approach  
 15 ~~results~~resulted in activation efficiency curves resembling a step function instead of S-shaped curves obtained ~~from~~by means of full GF-PDFs. ~~More precisely, the size-dependent activation efficiency equals either 0 or 1 depending on whether the  $\kappa_{\text{avg}}(D_p)$  is lower or higher than the critical  $\kappa(D_p, S_{c, \text{eff}})$  calculated by Eq. (5).~~

### 3 Results and discussion

#### 3.1 Weather parameters and cloud events

- 20 During the campaign, the hourly averaged ambient temperatures varied between -9.7 °C and 15.3 °C, with sub-zero temperatures occurring mostly during the latter half of the measurement period. Due to the diurnal temperature variations, relative humidity usually reached its daily maxima during the nighttime and early morning hours. Therefore, most of the cloud formation events also occurred within these time periods. Generally, the wind speeds exhibited a diurnal variation similar to ambient RH with slightly increased velocities during the nighttime. The wind was blowing from southwestern directions (180–  
 25 270°) approximately 39-% of time, and during cloud events, this fraction was even higher, roughly 50-%. Altogether, the tower was inside a cloud approximately 10-% of time, which is somewhat less compared to typical autumn conditions at Puijo (Portin et al., 2009). In total, 15 non-precipitative cloud events were observed during the campaign, providing up to 47 cloud event hours.

### 3.2 Hygroscopicity at Puijo

Figure 1 shows the average GFs and GF-PDFs observed at Puijo during the campaign period. Overall, the measured GFs varied between  $\sim 1$  and  $\sim 1.7$  reaching the campaign averages ( $\pm 1$  standard deviation) of  $1.30 \pm 0.11$  (80 nm),  $1.42 \pm 0.10$  (120 nm) and  $1.47 \pm 0.10$  (150 nm). A closer look at the GF-PDFs indicates that there are two main factors affecting the observed size dependence. In general, the GF-PDFs ~~appeared~~appear bimodal with clearly distinguishable peaks around 1.0–1.1 and 1.4–1.6. However, the number fraction of less hygroscopic particles ( $f_{GF<1.25}$ ) decreases with increasing particle size, and at the same time, the more hygroscopic mode tends to shift slightly towards larger growth factors. A similar shift is also apparent in Fig. 2 where the average hygroscopicity distributions are plotted as  $\kappa$ -PDFs. Furthermore, this indicates that the transition towards higher GFs can be attributed both to Kelvin effect as well as changes in chemical composition.

According to a wind sector analysis (see supplementary material for further details), the polluted sector was characterized by higher  $f_{GF<1.25}$  than the clean one, but on the other hand, the more hygroscopic mode shifted towards higher GFs suppressing the differences in average GFs. Tiitta et al. (2010) studied the particulate roadside emissions in Kuopio and observed an elevated hydrophobic/non-hygroscopic particle mode ( $D_p \leq 50$  nm) originating from fresh exhaust emissions. A similar observation was also made by Laborde et al. (2013) in Paris with particle sizes up to 265 nm. Against this background, it is probable that the less hygroscopic fraction observed at Puijo is also linked to the traffic and other anthropogenic particle emissions/sources of organic aerosol.

Minor differences can be seen also in the GF-PDFs between cloudy and cloud-free conditions (Fig. 1). The fraction of more hygroscopic particles is slightly enhanced during ~~the~~ cloud-free conditions, resulting in higher average GFs. This can be due to the limited time scale of cloud events and varying contribution of local pollution, together with possibility for in-cloud processing and precipitation scavenging. However, for example Henning et al. (2014) and Zelenyuk et al. (2010) reported a cloud-induced sulfate enrichment in the particle phase, which should eventually result in increasing hygroscopicity. One may also note that the in-cloud distributions measured during the changingtwin inlet period differ considerably from the campaign averages with substantially stronger contribution of  $f_{GF<1.25}$  at  $D_p = 120$  and 150 nm. Again, the most probable explanation is the enhanced presence of local pollution ~~resulting from~~due to more frequent ~~easterly~~easterly winds.

Analytical~~As indicated above, the analytical~~ division between the low~~less~~ and high~~hygroscopicity~~more hygroscopic particles was done by using a GF limit of 1.25. The value represents ~~the~~ common midpoint between the two GF modes and it has been used in several preceding studies (e.g. Kammermann et al., 2010a; Jurányi et al., 2013; Portin et al., 2014). Averaged over the whole campaign, the size-dependent less hygroscopic fractions were  $0.44 \pm 0.25$  (80 nm),  $0.22 \pm 0.17$  (120 nm) and  $0.15 \pm 0.14$  (150 nm). Together with the ~~observed~~average GF-PDFs, these values are comparable to ~~the average~~ hygroscopicities ~~obtained~~observed at a back-ground site in southern Sweden (Fors et al., 2011). However, as seen during the changingtwin inlet period, our site experienced reasonably strong variation in less hygroscopic fraction with  $f_{GF<1.25}$  regularly reaching the levels of urban conditions (McFiggans et al., 2006). For example during the observed cloud hours, the average  $f_{GF<1.25}$  ranged from 0 up to ~~0.68~~0.62 at  $D_p = 150$  nm. By comparison, Jurányi et al. (2013) studied the aerosol mixing state in Paris, France and reported

typical values varying between ~0.20 and ~0.60 at  $D_p = 165$  nm. In addition, Ferron et al. (2005) observed that in urban and semi-urban conditions, the non-hygroscopic mode could be dominant at particle sizes up to 250 nm, especially during the autumn and winter seasons.

### 3.3 Hygroscopic properties of total, interstitial and residual aerosol

- 5 The GF-dependent activation efficiencies ( $f_{act,GF}$ ) were ~~calculated~~derived from the measured GF-PDFs according to

$$f_{act}(D_p, GF_1, GF_2) = \frac{\int_{GF_1}^{GF_2} [N_{tot}(D_p) \times GF\text{-PDF}_{tot}(GF, D_p) - N_{int}(D_p) \times GF\text{-PDF}_{int}(GF, D_p)] dGF}{\int_{GF_1}^{GF_2} N_{tot}(D_p) \times GF\text{-PDF}_{tot}(GF, D_p) dGF} \quad (9)$$

$$f_{act,GF_1 < GF < GF_2}(D_p) = \frac{\frac{dN_{tot}}{d \log D_p}(D_p) \times f_{tot,GF_1 < GF < GF_2}(D_p) - \frac{dN_{int}}{d \log D_p}(D_p) \times f_{int,GF_1 < GF < GF_2}(D_p)}{\frac{dN_{tot}}{d \log D_p}(D_p) \times f_{tot,GF_1 < GF < GF_2}(D_p)} \quad (10)$$

- where  $N_{tot}$  $f_{tot,GF_1 < GF < GF_2}$  and  $N_{int}$  $f_{int,GF_1 < GF < GF_2}$  ~~were~~ the total and interstitial number ~~concentrations~~fractions of particles with  
dry size  $D_p$  and GF between  $GF_1$  and  $GF_2$  ~~specify the applied GF range~~. The average activation efficiencies were calculated  
 10 separately for each cloud event and for three different GF regimes ( $GF \geq 0.80$ ,  $0.80 \leq GF < 1.25$  and  $GF \geq 1.25$ ). Here it should  
be noted that the activation efficiencies can appear negative if the averaged interstitial concentrations are higher than the  
corresponding total values. This can be the case especially within the less hygroscopic regime where the activated fractions  
are generally low. In such cases, the negative activation efficiencies are reported as zeros and treated as such when calculating  
the total activated fractions ( $f_{act,GF \geq 0.80}$ ). Thus, the resulting  $f_{act,GF \geq 0.80}$  values can be slightly different from those derived solely  
 15 from DMPS measurements.

- For comparison purposes, ~~the~~total activated fractions were also determined from size distribution measurements. Typically,  
~~the activation efficiencies calculated by Eq. (9) ( $f_{act,GF \geq 0.80}$ ) appeared somewhat larger than the DMPS derived values ( $f_{act,DMPS}$ ).~~  
~~One possible explanation is the relatively of nine cloud events were observed during the twin inlet period. Due to the reasonably~~  
 20 ~~adequately by both of the sample lines. Therefore, we only present the results from three and slow alteration between the two~~  
~~sampling lines, data with good coverage and reasonable agreement between  $f_{act,GF \geq 0.80}$  and  $f_{act,DMPS}$  were available for four~~  
~~separate cloud events with reasonably good agreement between the two methods.~~ These ~~three cloud events~~cases are  
 summarized in Table 1. Because of the low activation efficiency of ultrafine particles, the ~~data is~~activation parameters are  
 presented only for 120 ~~nm~~ and 150 nm sizes.

- 25 The duration of the selected cloud ~~eases~~events varied from 1 h ~~2031~~ min (event #2) to 4 h 25 min ~~with event #1 being the~~  
~~shortest and (event #3 the longest. The cloud event #1 was characterized by western winds blowing across the clean sector. By~~  
~~contrast, the wind was blowing from the northeast and southeast during the cloud events #2 and #3, respectively. Some~~  
~~differences can be seen also in the hygroscopic characteristics. Event #2 was characterized by relatively small fraction of less~~

hygroscopic particles and the more hygroscopic mode was shifted towards larger GFs. Conversely,4). Cloud event #1 had an elevated  $f_{GF<1.25}$  and also the more hygroscopic mode appeared the least hygroscopic out of all three cases.

The most interesting remark concerns the difference between the low and high hygroscopicity particles at 120 and 150 nm.

While the activation efficiency of total aerosol and more hygroscopic particles increases with size, the less hygroscopic the

5 highest particle mode remains almost non-activated. As an exception, part of the less hygroscopic 150 nm particles seem and

cloud droplet number concentrations, up to have activated into cloud droplets 2935 cm<sup>-3</sup> and 781 cm<sup>-3</sup>, respectively, whereas

much lower values were observed during the latter events. For example during the cloud event #4, the particle and cloud

droplet concentrations were down to 792 cm<sup>-3</sup> and 69 cm<sup>-3</sup>, respectively. These four cloud events were also characterized by

very different wind patterns. Event #2 was influenced by westerly winds blowing across the clean sector. By contrast, the wind

10 was from the northeast during cloud event #1. However, this is only due to the reasonably large fraction of particles around

GF=3 and from the southeast during the cloud. Also, since this “intermediate” GF mode became visible at the end of the

cloud event, it’s slightly uncertain if it #4. Furthermore, event #1 was present dominated by southwesterly winds blowing

across the transition region between the clean and polluted sectors.

The most interesting remark, however, concerns the different activated fractions within the two GF modes. At  $D_p = 120$  nm,

15 the activation efficiencies of less hygroscopic particles varied from 0% to 4%, whereas the values for more hygroscopic

particles were much higher (between 57% and 70%). A similar trend was observed also during the preceding interstitial

measurements. If this wasn’t at  $D_p = 150$  nm, with corresponding intervals of 0%–34% and 78%–83%, respectively.

One may also note that the hygroscopicity-dependent activation efficiencies increased with particle size. In the case, the

reported value of more hygroscopic particles, this was most likely attributed to Kelvin effect and small increments in respective

20 hygroscopicities. Besides, the cloud events #2 and #4 were characterized by somewhat increased  $f_{act,GF<1.25} = 0.33$  might be

overestimated values at  $D_p = 150$  nm. Although it is possible that part of these less hygroscopic particles were scavenged into

cloud droplets, it’s good to note that these cases were also characterized by notably low particle concentrations which may

have led to increased uncertainties in activated fractions.

The difference between the activated and non-activated particles is also illustrated in Fig. 1 (lower panel) where the average

25 GFs and GF-PDFs are presented separately for total, interstitial and residual aerosol populations. Here, the residual aerosol

properties were estimated indirectly by using the hourly averaged total and interstitial GF-PDFs and ~~their actual number~~the

respective ambient particle concentrations– as follows:

$$c_{res}(GF, D_p) = \frac{dN_{tot}}{d \log D_p}(D_p) \times GF\text{-PDF}_{tot}(GF, D_p) - \frac{dN_{int}}{d \log D_p}(D_p) \times GF\text{-PDF}_{int}(GF, D_p). \quad (11)$$

Apparently, the relative contribution of less hygroscopic particles is the strongest in the interstitial population and the more

30 hygroscopic mode appears distinctly only in the total and estimated residual aerosol. This is also reflected by the average

growth factors. At  $D_p = 120$  nm and 150 nm, the GFs of cloud droplet residuals are approximately ~~10–18%~~10–18% higher than those

of interstitial particles. In terms of  $\kappa$  values, this discrepancy ~~corresponds~~would correspond to a difference up to ~~60–80–65%~~60–80–65%

75% depending on particle size. Again, it should be remarked that similar to activated fractions, the residual GF distributions ( $C_{res}$ ) can appear locally negative if the interstitial concentrations are higher than the respective total concentrations. Before converting these distributions into GF-PDFs shown in Fig. 1, the negative values were set to zeros which eventually strengthened the positive peaks appearing in normalized distributions. As a result, for example the less hygroscopic particle mode appearing in the estimated residual aerosol can be partially attributed to methodological uncertainties.

To our knowledge, this is one of the very few studies characterizing the hygroscopic properties of different in-cloud aerosol populations. Previously, Svenningsson et al. (1994) studied the aerosol hygroscopicity and its relationship to cloud droplet activation at Kleiner Feldberg in Germany. Interstitial aerosol hygroscopicity was measured during cloud events, and by assuming that the air mass was the same, it was compared to the total aerosol sampled during the following clear sky conditions.

The less hygroscopic particle fraction was substantially higher in the interstitial population, indicating that the more hygroscopic particles were scavenged into the cloud droplets more efficiently than the less hygroscopic ones. This observation was confirmed in a case study, where a counter flow virtual impactor (CVI) was used to separate the cloud droplets from the total aerosol, so that the hygroscopicity of cloud droplet residuals could be measured independently. Likewise, Rose et al. (2013) observed a decreasing fraction of available CCN during a precipitative cloud event, suggesting that the more hygroscopic particles were mostly activated into cloud droplets and removed from the air through precipitation. Overall, our results by Svenningsson et al. (1994) from Puijo are in a good agreement with our observations from Puijo reported by Svenningsson et al. (1994) and Rose et al. (2013).

In situ aerosol chemical composition and partitioning between activated and non-activated particles has been studied recently by means of aerosol mass spectrometry (e.g. Hao et al., 2013; Zelenyuk et al., 2010; Kamphus et al., 2010; Drewnick et al., 2006) and electron microscopy (Li et al., 2011). Based on the results from Puijo Cloud Experiment 2010, Hao et al. (2013) reported substantially higher mass fractions of organic nitrate and less oxidized organic species in the interstitial particles compared to residual ones. Similarly, Zelenyuk et al. (2010) and Li et al. (2011) observed an elevated fraction of sulfates in the activated particles. Although these results are broadly in line with our observations on the hygroscopic discrepancies observed in this study, distinct hygroscopicity of activated and non-activated particles, great care should be taken when comparing the results. For example, Hao et al. (2013) observed an increased organic fraction in the Aitken mode particles, indicating that the differences in chemical composition also reflected the effect of particle size.

At Puijo, the critical droplet activation diameter, i.e. the diameter corresponding to the 50-% activation efficiency (D50), varies typically between 100 and 200 nm. According to the above results, our observations, this value is highly dependent on the prevailing hygroscopicity. To illustrate this relationship, the DMPS derived D50s (obtained from  $f_{act,DMPS}$  via linear interpolation) were correlated with the hourly averaged  $\kappa$  values. Furthermore, a non-linear regression model  $D50 \sim a \times \kappa^{-1/2}$  was chosen to account for the theoretical dependence addressed in Eq. (5). The results are summarized in Fig. 2, where the data points are colored according to the number fraction of less hygroscopic particles. Figure 3 summarizes the results from all the observed cloud hours. Since the average hygroscopicity reflects the relative contribution of the two GF modes, the low-end  $\kappa$  values were characterized by elevated  $f_{GF<1.25}$  and vice versa. Differing more than three standard deviations from the



campaign average of 132 nm, the data point with  $D_{50} = 231$  nm was excluded from the analysis as an outlier. Apart from this exception, the hourly  $D_{50}$ s ranged from 93 to 173 nm.

The 80 nm particles yielded the weakest correlation with root-mean-square error (RMSE) of  $\sim 29$  nm. This could be expected since the 80 nm size usually remained well below the critical activation limit. On the contrary, the 120 and 150 nm sizes yielded the RMSE values ~~of around~~  $\sim 13$  nm, suggesting a considerably stronger correlation between the two parameters. According to the linear correlations reported by Quinn et al. (2008), the chemical composition (parametrized ~~by~~ HOA mass fraction) explained approximately 40% to 50% of the variation in critical activation diameter. In ~~our case comparison~~, applying a linear regression ~~to our data set~~ would ~~lead to result in~~  $R^2$  values of 0.58 (120 nm) and 0.57 (150 nm), ~~indicating~~. ~~Assuming that the hygroscopicity of relationship between  $\kappa$  and  $D_{50}$  could be treated as (locally) linear, these values would indicate that~~ the accumulation mode ~~particles hygroscopicity~~ explained up to 57%–58% of the observed variance in  $D_{50}$ , therefore dominating the effect of varying meteorology and especially, the varying supersaturation. ~~Moreover, no correlation was found between the  $\kappa$  values and the estimated effective peak supersaturations ( $R^2 \sim 0.02$ ; not shown here).~~

### 3.4 $N_{\text{act,HTDMA}}$ and $s_{\text{eff},s_{\text{c,eff}}}$

The activation efficiency curves and the corresponding cloud droplet number concentrations were derived from the hourly averaged GF-PDFs according to the procedure described in Sect. 2.5. Reproducibility of the ~~DMPS derived~~ activation curves and cloud droplet nuclei spectra was confirmed visually, and the data points with considerable ~~uncertainties differences~~ were omitted from the ~~analysis. A following analyses. In most of these cases, the estimated activation curves appeared clearly steeper than the measured ones, leading to both an underestimation of activated fraction at  $D_p < D_{50}$  and an overestimation of activated fraction at  $D_p > D_{50}$ . Alternatively, some of the estimated curves managed to reproduce the correct behavior at smaller sizes ( $D_p < 150$  nm) but overestimated the activation at the size range of extrapolated GF-PDFs. Although these uncertainties caused only a small net bias to droplet estimations, they indicate that the estimated GF surfaces may have failed to replicate the real ambient conditions.~~

~~Figure 4 shows a comparison between the HTDMA and DMPS derived cloud droplet concentrations is shown in Fig. 3 (red dots). The regression line fitted through the 26 data points has a slope of 1.03016 indicating a good agreement between the estimated and measured cloud droplet concentrations. In addition, Fig. 34 includes a comparison between the external and the internal mixing approaches (grey dots). Correspondingly, the regression line has a slope of 1.022 and all the hourly data points lie between the ratios 0.91 and 1.04. Similarly Analogous to Kammermann et al. (2010b), this observation suggests that the CCN concentration can be determined with reasonable accuracy even if the exact mixing state remains unknown. Nevertheless, since the determination of  $N_{\text{act,HTDMA}}$  included the estimation of effective peak supersaturation by means of  $f_{\text{act,DMPS}}$ , the comparison shown here can't be considered as a real CCN closure study in an explicit manner. Instead, it rather serves as a base for the analysis presented in the following section (Sect. 3.5).~~

~~In this study Overall~~, the hourly estimated peak supersaturations ranged from 0.16% to 0.29%-%. ~~Apart of one exception with  $s_{\text{c,eff}}$  up to 0.44%, this range was valid also for the omitted cloud hours.~~ Although these values might be slightly biased due to

the ~~hygroscopicity related~~ possible discrepancies ~~between sub- and supersaturated hygroscopicities~~, they provide ~~some~~ valuable information about the ~~in-cloud~~ conditions: ~~relevant to cloud droplet formation~~. Reaching the average and median values of 0.22-%, ~~these~~%, the estimated  $s_{c,eff}$  values are comparable to ~~the~~ supersaturations of 0.18-%–0.26-% obtained by Anttila et al. (2009) at the Pallas GAW station in Northern Finland. Similar “average” supersaturations can ~~also~~ be obtained ~~also~~ by using the regression curves presented in Fig. 23. By assuming a constant temperature of 2.2 °C (average temperature of all the cloud ~~eventshours~~), the regression parameters  $6.94 \times 10^{-8}$  (120 nm) and  $7.52 \times 10^{-8}$  (150 nm) imply supersaturations of 0.23-% and 0.20-%, respectively. ~~On the other hand~~By contrast, these values are somewhat low compared to the high-end supersaturations determined at some European ~~high-altitude~~mountain sites. For example, ~~Hammer et al. (2014) reported a median peak supersaturation of 0.35 % for a mountain site at Jungfraujoch and similarly,~~ Asmi et al. (2012) found supersaturations ranging from 0.1% up to 0.6-% at Puy-de-Dôme, ~~and similarly,~~ Hammer et al. (2014) observed a median peak supersaturation of 0.35% at Jungfraujoch. On the other hand, Hammer et al. (2014) also found a clear difference between the two dominant wind sectors reflecting the effect of terrain topography on updraft velocities. Generally, the air masses rising over the less steep mountainside were characterized by weaker updrafts and consequently, by supersaturations more comparable to ours (median 0.22%).

### 15 3.5 Sensitivity of cloud droplet formation to varying hygroscopicity

Following the procedure described in Sect. 2.5, we performed  $\kappa$ -Köhler simulations to investigate; how the cloud droplet concentrations would change if all the particles belonged to the more hygroscopic group. For each cloud hour, we created an alternative hygroscopicity scenario by modifying the original GF-PDFs. This ~~alteration~~ was ~~done~~conducted by eliminating the contribution of ~~the~~ less hygroscopic particles and normalizing the resulting distributions so that the integral over each particle size became equal to one. In principle, the most significant changes appeared at sizes where the original  $f_{GF < 1.25}$  ~~was~~were large enough to be affected by the modifications. Thus, instead of varying the ~~growth factors~~GFs equally and regardless of particle size, the modifications only ~~effected~~affected the presence of an existing low-GF mode and increased the average GFs accordingly.

Overview of the applied hygroscopic variations is presented in Table 2. Shown are average GFs at  $D_p = 80, 120, 150$  and  $200$  nm for the two hygroscopicity scenarios, as well as their absolute deviation from each other. In terms of  $\kappa$  values, the high hygroscopicity assumption results in values ~~lying~~ between 0.20 and 0.40. According to Andreae and Rosenfeld (2008), these values would be characteristic ~~for~~of typical aged continental aerosol. In order to highlight their atmospheric relevance, it’s also important to note that they are within the range of hygroscopicities observed at Puijo during the campaign period. ~~In Fig. 4, The cloud droplet concentrations were calculated for both scenarios by using identical particle size distributions as well as equal effective peak supersaturations.~~

~~Figure 5 shows~~ the relative and absolute changes in  $N_{act,HTDMA}$  ~~are plotted~~ against the hygroscopicity shift at  $D_p = 150$  nm. Again, the data points are colored according to the less hygroscopic fraction, and the marker size is scaled relative to total particle number concentration.

Naturally, the relative change in cloud droplet concentration increases with an increasing hygroscopicity shift. The total variation extends up to 70%, with. Although most of the data points residing in the range of 10%–40%. Because%, the total variation extends up to 70%. Furthermore, because of the approximately linear behavior of relative  $\Delta N_{\text{act,HTDMA}}$ , the absolute change appears highly sensitive to initial particle size distribution. In the case of high total concentration, the absolute  $\Delta N_{\text{act,HTDMA}}$  can be up to hundreds of droplets per cubic centimeter even with reasonably small hygroscopic variations ( $\Delta \text{GF}_{150 \text{ nm}} < 0.10$ ). In addition to droplet concentration, Fig. 4 illustrates the change in critical activation diameter ( $D_{50}$ ). Understandably, by suppressing the size-dependent variations in chemical composition, the activation curves become steeper and the  $D_{50}$ s decrease. Typically, the change in  $D_{50}$  remains below 20 nm, but in the most extreme cases, it can be up to almost 35 nm.

In addition to droplet concentration, Fig. 5 illustrates the change in critical activation diameter ( $D_{50\text{HTDMA}}$ ; derived from  $f_{\text{act,HTDMA}}$  via linear interpolation). Understandably, as the high hygroscopicity assumption suppresses the size-dependence of aerosol hygroscopicity (see Table 2), the activation efficiency curves become steeper and  $D_{50}$ s decrease. Typically, the change in  $D_{50}$  remains below 20 nm but can reach 35 nm in the most extreme cases.

Anttila et al. (2009) studied the effect of varying hygroscopicity at the Pallas GAW station in Northern Finland. According to the simulations, increasing the GFs by 10% led to 17%–51% increments in cloud droplet number concentration. Bearing in mind that the 10% relative change in GFs corresponded to an absolute change of  $\sim 0.13$  at  $D_p = 150$  nm, the observations by Anttila et al. (2009) are in a good agreement with the our results reported above. However, it is also worth pointing out, that by increasing all the GFs by 10%, the absolute change in hygroscopicity growth factors increased with particle size. In our analysis, removal of the less hygroscopic mode induced the opposite effect.

Similarly Similar to our analysis, Wex et al. (2010) assessed the overestimation of CCN concentration if all the particles were assumed to have  $\kappa$  of the more hygroscopic particles. By using data from the literature data, the overestimation was derived for rural, urban and marine aerosol populations and for different less hygroscopic fractions. In the case of urban and rural aerosols, the overestimation varied between 20%–40% and 40%–100% when the less hygroscopic fraction ( $\kappa < 0.10$ ) was set to 0.3 and 0.5, respectively. With the range of variation illustrating the inverse proportionality to supersaturation ( $s$  between 0.1% and 0.5%), these values are comparable to our observations. However, Wex et al. (2010) assumed the same less hygroscopic fraction for all particle sizes, which is very rarely the case in our conditions at Puijo.

In addition, Kammermann et al. (2010b) performed a set of CCN closure studies to investigate the sensitivity of CCN concentration to unknown chemical composition. According to the results, the The median bias between the predicted and measured CCN concentrations was up to +54% when a constant  $\kappa = 0.30$  was assumed. Similarly Analogous to our measurement site observations, the average hygroscopicities reported by Kammermann et al. (2010b) were relatively low explaining the remarkable bias in CCN predictions. On the contrary, Meng et al. (2014) found a reasonably good agreement between the measured and predicted CCN concentrations by using a constant  $\kappa$  as high as 0.33 at a coastal site in Hong Kong, where the aerosol composition was dominated by inorganic species.

In principle, the high hygroscopicity assumption yields ~~in-~~values resembling the hygroscopicities that could be obtained from bulk composition measurements by means of aerosol mass spectrometry. Typically, the bulk composition is biased towards the inorganics ~~because of~~due to the emphasis on larger particles. This can lead to a considerable overestimation of CCN concentration. For example, Medina et al. (2007), Almeida et al. (2013) and Meng et al. (2014) reported an overprediction of 26-~~44~~% at ~0.20% supersaturation when only the size-averaged composition was ~~taken into account~~considered. In all of these studies, implementing the size-dependent or size-resolved chemical composition substantially improved the CCN predictions~~substantially~~.

#### 4 Summary and conclusions

The relationship between aerosol hygroscopicity and cloud droplet activation was studied at the Puijo measurement station in Kuopio, Finland during the Puijo Cloud Experiment 2014. The purpose of the campaign was to identify the hygroscopicity-dependent activation properties of cloud forming aerosol population, as well as to study the sensitivity of cloud droplet activation to varying chemical composition in real atmospheric in-cloud conditions. In total, 15 cloud events were observed during the 2-month long campaign providing a total of 47 cloud hours.

The aerosol hygroscopicity at 90% RH was measured with an HTDMA. Typically, the measured GF-PDFs appeared bimodal, indicating an externally mixed aerosol population. By using the GF-PDFs and particle concentrations measured separately for interstitial and total aerosol populations, the hygroscopicity-dependent activation properties were estimated. The growth factor distributions were divided into low and high hygroscopicity regimes by using ~~the~~a GF limit of 1.25 and the activated fraction in each category was ~~calculated~~estimated.

The in-cloud measurements revealed clear differences in activation efficiency between the two GF modes. The less hygroscopic particles originating most likely from local anthropogenic sources remained ~~almost~~mostly non-activated, ~~while~~whereas the more hygroscopic mode was primarily scavenged into cloud droplets. This observation highlights the role of aerosol hygroscopicity and chemical composition in cloud droplet activation. A highly variable portion of less hygroscopic particles have been reported in several studies and in many different locations during the last few decades. Due to the anthropogenic contribution, the less hygroscopic mode can be dominant at particle sizes up to 250 nm. As shown by our analysis, this can lead to a significant decrease in the fraction of available CCN.

By modifying the measured GF-PDFs, we estimated ~~how~~ the cloud droplet ~~concentration~~concentrations would change if all the particles belonged to the more hygroscopic mode. This would correspond to a situation with typical aged, continental aerosol in the atmosphere without any fresh anthropogenic influence. According to the  $\kappa$ -Köhler simulations, the change in cloud droplet concentration was up to 70-~~depending~~% when the possible feedback effects on ~~the increase in~~hygroscopicity-cloud supersaturation were assumed negligible. Our result clearly demonstrates the importance of correct treatment of anthropogenic organic aerosols, their hygroscopicity and the effect of atmospheric aging, when estimating ~~the~~ CCN ~~concentration~~concentrations.

**Acknowledgements.** This work was supported by the European Research Council (ERC starting grant 335478), the Academy of Finland (grant no. 272041, 259005, 283031) and The Doctoral School of the University of Eastern Finland. In addition, A.R. acknowledges the financial support from Maj and Tor Nessling Foundation.

## References

- Ahmad, I., Mielonen, T., Grosvenor, D. P., Portin, H. J., Arola, A., Mikkonen, S., Kuhn, T., Leskinen, A., Joutsensaari, J., Komppula, M., Lehtinen, K. E. J., Laaksonen, A., and Romakkaniemi, S.: Long-term measurements of cloud droplet concentrations and aerosol-cloud interactions in continental boundary layer clouds, *Tellus B*, 65, 20138, doi:10.3402/Tellusb.V65i0.20138, 2013.
- Almeida, G. P., Brito, J., Morales, C. A., Andrade, M. F., and Artaxo, P.: Measured and modelled cloud condensation nuclei (CCN) concentration in Sao Paulo, Brazil: the importance of aerosol size-resolved chemical composition on CCN concentration prediction, *Atmos. Chem. Phys.*, 14, 7559-7572, doi:10.5194/acp-14-7559-2014, 2014.
- Andreae, M. O., and Rosenfeld, D.: Aerosol-cloud-precipitation interactions. Part 1. The nature and sources of cloud-active aerosols, *Earth.-Sci. Rev.*, 89, 13-41, doi:10.1016/j.earscirev.2008.03.001, 2008.
- Anttila, T., Vaattovaara, P., Komppula, M., Hyvarinen, A. P., Lihavainen, H., Kerminen, V. M., and Laaksonen, A.: Size-dependent activation of aerosols into cloud droplets at a subarctic background site during the second Pallas Cloud Experiment (2nd PaCE): method development and data evaluation, *Atmos. Chem. Phys.*, 9, 4841-4854, 2009.
- Asmi, E., Freney, E., Hervo, M., Picard, D., Rose, C., Colomb, A., and Sellegri, K.: Aerosol cloud activation in summer and winter at puy-de-Dome high altitude site in France, *Atmos. Chem. Phys.*, 12, 11589-11607, doi:10.5194/acp-12-11589-2012, 2012.
- Broekhuizen, K., Chang, R. Y. W., Leaitch, W. R., Li, S. M., and Abbatt, J. P. D.: Closure between measured and modeled cloud condensation nuclei (CCN) using size-resolved aerosol compositions in downtown Toronto, *Atmos. Chem. Phys.*, 6, 2513-2524, 2006.
- Conant, W. C., VanReken, T. M., Rissman, T. A., Varutbangkul, V., Jonsson, H. H., Nenes, A., Jimenez, J. L., Delia, A. E., Bahreini, R., Roberts, G. C., Flagan, R. C., and Seinfeld, J. H.: Aerosol-cloud drop concentration closure in warm cumulus, *J. Geophys. Res.-Atmos.*, 109, D13204, doi:10.1029/2003jd004324, 2004.
- Drewnick, F., Schneider, J., Hings, S. S., Hock, N., Noone, K., Targino, A., Weimer, S., and Borrmann, S.: Measurement of ambient, interstitial, and residual aerosol particles on a mountaintop site in central Sweden using an aerosol mass spectrometer and a CVI, *J. Atmos. Chem.*, 56, 1-20, doi:10.1007/s10874-006-9036-8, 2007.
- Dusek, U., Frank, G. P., Hildebrandt, L., Curtius, J., Schneider, J., Walter, S., Chand, D., Drewnick, F., Hings, S., Jung, D., Borrmann, S., and Andreae, M. O.: Size matters more than chemistry for cloud-nucleating ability of aerosol particles, *Science*, 312, 1375-1378, doi:10.1126/science.1125261, 2006.
- Ervens, B., Cubison, M., Andrews, E., Feingold, G., Ogren, J. A., Jimenez, J. L., DeCarlo, P., and Nenes, A.: Prediction of cloud condensation nucleus number concentration using measurements of aerosol size distributions and composition and light scattering enhancement due to humidity, *J. Geophys. Res.-Atmos.*, 112, D10s32, doi:10.1029/2006jd007426, 2007.
- Ferron, G. A., Karg, E., Busch, B., and Heyder, J.: Ambient particles at an urban, semi-urban and rural site in Central Europe: hygroscopic properties, *Atmos. Environ.*, 39, 343-352, doi:10.1016/j.atmosenv.2004.09.015, 2005.

- Fitzgerald, J.: Dependence of the Supersaturation Spectrum of CCN on Aerosol Size Distribution and Composition, *J. Atmos. Sci.*, 30, 628-634, doi:[http://dx.doi.org/10.1175/1520-0469\(1973\)030<0628:DOTSSO>2.0.CO;2](http://dx.doi.org/10.1175/1520-0469(1973)030<0628:DOTSSO>2.0.CO;2), 1973.
- Fors, E. O., Swietlicki, E., Svenningsson, B., Kristensson, A., Frank, G. P., and Sporre, M.: Hygroscopic properties of the ambient aerosol in southern Sweden - a two year study, *Atmos. Chem. Phys.*, 11, 8343-8361, doi:10.5194/acp-11-8343-2011, 2011.
- Fountoukis, C., Nenes, A., Meskhidze, N., Bahreini, R., Conant, W. C., Jonsson, H., Murphy, S., Sorooshian, A., Varutbangkul, V., Brechtel, F., Flagan, R. C., and Seinfeld, J. H.: Aerosol-cloud drop concentration closure for clouds sampled during the International Consortium for Atmospheric Research on Transport and Transformation 2004 campaign, *J. Geophys. Res.-Atmos.*, 112, D10s30, doi:10.1029/2006jd007272, 2007.
- 10 Good, N., Topping, D. O., Allan, J. D., Flynn, M., Fuentes, E., Irwin, M., Williams, P. I., Coe, H., and McFiggans, G.: Consistency between parameterisations of aerosol hygroscopicity and CCN activity during the RHaMBLE discovery cruise, *Atmos. Chem. Phys.*, 10, 3189-3203, 2010.
- Gysel, M., McFiggans, G. B., and Coe, H.: Inversion of tandem differential mobility analyser (TDMA) measurements, *J. Aerosol Sci.*, 40, 134-151, doi:10.1016/j.jaerosci.2008.07.013, 2009.
- 15 Hammer, E., Bukowiecki, N., Gysel, M., Juranyi, Z., Hoyle, C. R., Vogt, R., Baltensperger, U., and Weingartner, E.: Investigation of the effective peak supersaturation for liquid-phase clouds at the high-alpine site Jungfrauoch, Switzerland (3580 m a.s.l.), *Atmos. Chem. Phys.*, 14, 1123-1139, doi:10.5194/acp-14-1123-2014, 2014.
- Hao, L. Q., Romakkaniemi, S., Kortelainen, A., Jaatinen, A., Portin, H., Miettinen, P., Komppula, M., Leskinen, A., Virtanen, A., Smith, J. N., Sueper, D., Worsnop, D. R., Lehtinen, K. E. J., and Laaksonen, A.: Aerosol Chemical Composition in  
20 Cloud Events by High Resolution Time-of-Flight Aerosol Mass Spectrometry, *Environ. Sci. Technol.*, 47, 2645-2653, doi:10.1021/es302889w, 2013.
- Henning, S., Dieckmann, K., Ignatius, K., Schafer, M., Zedler, P., Harris, E., Sinha, B., van Pinxteren, D., Mertes, S., Birmili, W., Merkel, M., Wu, Z., Wiedensohler, A., Wex, H., Herrmann, H., and Stratmann, F.: Influence of cloud processing on CCN activation behaviour in the Thuringian Forest, Germany during HCCT-2010, *Atmos. Chem. Phys.*, 14, 7859-7868,  
25 doi:10.5194/acp-14-7859-2014, 2014.
- Hersey, S. P., Craven, J. S., Metcalf, A. R., Lin, J., Latham, T., Suski, K. J., Cahill, J. F., Duong, H. T., Sorooshian, A., Jonsson, H. H., Shiraiwa, M., Zuend, A., Nenes, A., Prather, K. A., Flagan, R. C., and Seinfeld, J. H.: Composition and hygroscopicity of the Los Angeles Aerosol: CalNex, *J. Geophys. Res.-Atmos.*, 118, 3016-3036, doi:10.1002/jgrd.50307, 2013.
- 30 Hudson, J. G.: Variability of the relationship between particle size and cloud-nucleating ability, *Geophys. Res. Lett.*, 34, L08801, doi:10.1029/2006gl028850, 2007.
- IPCC: Climate change 2013: The physical science basis. Intergovernmental panel on Climate Change, Cambridge University Press, New York, 2013.

- Jaatinen, A., Romakkaniemi, S., Anttila, T., Hyvarinen, A. P., Hao, L. Q., Kortelainen, A., Miettinen, P., Mikkonen, S., Smith, J. N., Virtanen, A., and Laaksonen, A.: The third Pallas Cloud Experiment: Consistency between the aerosol hygroscopic growth and CCN activity, *Boreal Environ. Res.*, 19, 368-382, 2014.
- 5 Junge, C. M., E.: Relationship of Cloud Nuclei Spectra to Aerosol Size Distribution and Composition, *J. Atmos. Sci.*, 28, 282-390, 1971.
- Juranyi, Z., Tritscher, T., Gysel, M., Laborde, M., Gomes, L., Roberts, G., Baltensperger, U., and Weingartner, E.: Hygroscopic mixing state of urban aerosol derived from size-resolved cloud condensation nuclei measurements during the MEGAPOLI campaign in Paris, *Atmos. Chem. Phys.*, 13, 6431-6446, doi:10.5194/acp-13-6431-2013, 2013.
- 10 Kammermann, L., Gysel, M., Weingartner, E., and Baltensperger, U.: 13-month climatology of the aerosol hygroscopicity at the free tropospheric site Jungfraujoch (3580 m a.s.l.), *Atmos. Chem. Phys.*, 10, 10717-10732, doi:10.5194/acp-10-10717-2010, 2010a.
- Kammermann, L., Gysel, M., Weingartner, E., Herich, H., Cziczo, D. J., Holst, T., Svenningsson, B., Arneth, A., and Baltensperger, U.: Subarctic atmospheric aerosol composition: 3. Measured and modeled properties of cloud condensation nuclei, *J. Geophys. Res.-Atmos.*, 115, D04202, doi:10.1029/2009jd012447, 2010b.
- 15 Kamphus, M., Ettner-Mahl, M., Klimach, T., Drewnick, F., Keller, L., Cziczo, D. J., Mertes, S., Borrmann, S., and Curtius, J.: Chemical composition of ambient aerosol, ice residues and cloud droplet residues in mixed-phase clouds: single particle analysis during the Cloud and Aerosol Characterization Experiment (CLACE 6), *Atmos. Chem. Phys.*, 10, 8077-8095, doi:10.5194/acp-10-8077-2010, 2010.
- Komppula, M., Lihavainen, H., Kerminen, V. M., Kulmala, M., and Viisanen, Y.: Measurements of cloud droplet activation of aerosol particles at a clean subarctic background site, *J. Geophys. Res.-Atmos.*, 110, D06204, doi:10.1029/2004jd005200, 2005.
- 20 Köhler, H.: The nucleus in and the growth of hygroscopic droplets, *Trans. Faraday Soc.*, 32, 1152-1161, doi:10.1039/TF9363201152, 1936.
- Laborde, M., Crippa, M., Tritscher, T., Juranyi, Z., Decarlo, P. F., Temime-Roussel, B., Marchand, N., Eckhardt, S., Stohl, A., Baltensperger, U., Prevot, A. S. H., Weingartner, E., and Gysel, M.: Black carbon physical properties and mixing state in the European megacity Paris, *Atmos. Chem. Phys.*, 13, 5831-5856, doi:10.5194/acp-13-5831-2013, 2013.
- 25 Leskinen, A., Portin, H., Komppula, M., Miettinen, P., Arola, A., Lihavainen, H., Hatakka, J., Laaksonen, A., and Lehtinen, K. E. J.: Overview of the research activities and results at Puijo semi-urban measurement station, *Boreal Environ. Res.*, 14, 576-590, 2009.
- 30 Leskinen, A., Arola, A., Komppula, M., Portin, H., Tiitta, P., Miettinen, P., Romakkaniemi, S., Laaksonen, A., and Lehtinen, K. E. J.: Seasonal cycle and source analyses of aerosol optical properties in a semi-urban environment at Puijo station in Eastern Finland, *Atmos. Chem. Phys.*, 12, 5647-5659, doi:10.5194/acp-12-5647-2012, 2012.



- Li, W. J., Li, P. R., Sun, G. D., Zhou, S. Z., Yuan, Q., and Wang, W. X.: Cloud residues and interstitial aerosols from non-precipitating clouds over an industrial and urban area in northern China, *Atmos. Environ.*, 45, 2488-2495, doi:10.1016/j.atmosenv.2011.02.044, 2011.
- 5 Liu, P. F., Zhao, C. S., Gobel, T., Hallbauer, E., Nowak, A., Ran, L., Xu, W. Y., Deng, Z. Z., Ma, N., Mildenerger, K., Henning, S., Stratmann, F., and Wiedensohler, A.: Hygroscopic properties of aerosol particles at high relative humidity and their diurnal variations in the North China Plain, *Atmos. Chem. Phys.*, 11, 3479-3494, doi:10.5194/acp-11-3479-2011, 2011.
- 10 Liu, D., Allan, J., Whitehead, J., Young, D., Flynn, M., Coe, H., McFiggans, G., Fleming, Z. L., and Bandy, B.: Ambient black carbon particle hygroscopic properties controlled by mixing state and composition, *Atmos. Chem. Phys.*, 13, 2015-2029, doi:10.5194/acp-13-2015-2013, 2013.
- McFiggans, G., Artaxo, P., Baltensperger, U., Coe, H., Facchini, M. C., Feingold, G., Fuzzi, S., Gysel, M., Laaksonen, A., Lohmann, U., Mentel, T. F., Murphy, D. M., O'Dowd, C. D., Snider, J. R., and Weingartner, E.: The effect of physical and chemical aerosol properties on warm cloud droplet activation, *Atmos. Chem. Phys.*, 6, 2593-2649, 2006.
- 15 Medina, J., Nenes, A., Sotiropoulou, R. E. P., Cottrell, L. D., Ziemba, L. D., Beckman, P. J., and Griffin, R. J.: Cloud condensation nuclei closure during the International Consortium for Atmospheric Research on Transport and Transformation 2004 campaign: Effects of size-resolved composition, *J. Geophys. Res.-Atmos.*, 112, D10s31, doi:10.1029/2006jd007588, 2007.
- Meng, J. W., Yeung, M. C., Li, Y. J., Lee, B. Y. L., and Chan, C. K.: Size-resolved cloud condensation nuclei (CCN) activity and closure analysis at the HKUST Supersite in Hong Kong, *Atmos. Chem. Phys.*, 14, 10267-10282, doi:10.5194/acp-14-10267-2014, 2014.
- 20 Pajunoja, A., Lambe, A. T., Hakala, J., Rastak, N., Cummings, M. J., Brogan, J. F., Hao, L. Q., Paramonov, M., Hong, J., Prisle, N. L., Malila, J., Romakkaniemi, S., Lehtinen, K. E. J., Laaksonen, A., Kulmala, M., Massoli, P., Onasch, T. B., Donahue, N. M., Riipinen, I., Davidovits, P., Worsnop, D. R., Petaja, T., and Virtanen, A.: Adsorptive uptake of water by semisolid secondary organic aerosols, *Geophys. Res. Lett.*, 42, 3063-3068, doi:10.1002/2015GL063142, 2015.
- 25 Petters, M. D., and Kreidenweis, S. M.: A single parameter representation of hygroscopic growth and cloud condensation nucleus activity, *Atmos. Chem. Phys.*, 7, 1961-1971, 2007.
- Portin, H. J., Komppula, M., Leskinen, A. P., Romakkaniemi, S., Laaksonen, A., and Lehtinen, K. E. J.: Observations of aerosol-cloud interactions at the Puijo semi-urban measurement station, *Boreal Environ. Res.*, 14, 641-653, 2009.
- 30 Portin, H., Leskinen, A., Hao, L., Kortelainen, A., Miettinen, P., Jaatinen, A., Laaksonen, A., Lehtinen, K. E. J., Romakkaniemi, S., and Komppula, M.: The effect of local sources on particle size and chemical composition and their role in aerosol-cloud interactions at Puijo measurement station, *Atmos. Chem. Phys.*, 14, 6021-6034, doi:10.5194/acp-14-6021-2014, 2014.
- Quinn, P. K., Bates, T. S., Coffman, D. J., and Covert, D. S.: Influence of particle size and chemistry on the cloud nucleating properties of aerosols, *Atmos. Chem. Phys.*, 8, 1029-1042, doi:10.5194/acp-8-1029-2008, 2008.

- Rose, D., Gunthe, S. S., Jurányi, Z., Gysel, M., Frank, G. P., Schneider, J., Curtius, J., and Pöschl, U.: Size-resolved and integral measurements of cloud condensation nuclei (CCN) at the high-alpine site Jungfraujoch, *Atmos. Chem. Phys. Discuss.*, **13**, 32575-32624, doi:10.5194/acpd-13-32575-2013, 2013.
- 5 Sjogren, S., Gysel, M., Weingartner, E., Alfarra, M. R., Duplissy, J., Cozic, J., Crosier, J., Coe, H., and Baltensperger, U.: Hygroscopicity of the submicrometer aerosol at the high-alpine site Jungfraujoch, 3580 m a.s.l., Switzerland, *Atmos. Chem. Phys.*, **8**, 5715-5729, 2008.
- Svenningsson, B., Hansson, H. C., Wiedensohler, A., Noone, K., Ogren, J., Hallberg, A., and Colvile, R.: Hygroscopic Growth of Aerosol-Particles and Its Influence on Nucleation Scavenging in-Cloud - Experimental Results from Kleiner-Feldberg, *J. Atmos. Chem.*, **19**, 129-152, doi:10.1007/Bf00696586, 1994.
- 10 Tiitta, P., Miettinen, P., Vaattovaara, P., Joutsensaari, J., Petaja, T., Virtanen, A., Raatikainen, T., Aalto, P., Portin, H., Romakkaniemi, S., Kokkola, H., Lehtinen, K. E. J., Kulmala, M., and Laaksonen, A.: Roadside aerosol study using hygroscopic, organic and volatility TDMA: Characterization and mixing state, *Atmos. Environ.*, **44**, 976-986, doi:10.1016/j.atmosenv.2009.06.021, 2010.
- Weingartner, E., Burtscher, H., and Baltensperger, U.: Hygroscopic properties of carbon and diesel soot particles, *Atmos. Environ.*, **31**, 2311-2327, doi:10.1016/S1352-2310(97)00023-X, 1997.
- 15 Wex, H., McFiggans, G., Henning, S., and Stratmann, F.: Influence of the external mixing state of atmospheric aerosol on derived CCN number concentrations, *Geophys. Res. Lett.*, **37**, L10805, doi:10.1029/2010gl043337, 2010.
- Wiedensohler, A., Birmili, W., Nowak, A., Sonntag, A., Weinhold, K., Merkel, M., Wehner, B., Tuch, T., Pfeifer, S., Fiebig, M., Fjaraa, A. M., Asmi, E., Sellegri, K., Depuy, R., Venzac, H., Villani, P., Laj, P., Aalto, P., Ogren, J. A., Swietlicki, E.,
- 20 Williams, P., Roldin, P., Quincey, P., Hüglin, C., Fierz-Schmidhauser, R., Gysel, M., Weingartner, E., Riccobono, F., Santos, S., Gruning, C., Faloon, K., Beddows, D., Harrison, R. M., Monahan, C., Jennings, S. G., O'Dowd, C. D., Marinoni, A., Horn, H. G., Keck, L., Jiang, J., Scheckman, J., McMurry, P. H., Deng, Z., Zhao, C. S., Moerman, M., Henzing, B., de Leeuw, G., Loschau, G., and Bastian, S.: Mobility particle size spectrometers: harmonization of technical standards and data structure to facilitate high quality long-term observations of atmospheric particle number size distributions, *Atmos. Meas. Tech.*, **5**, 657-685, doi:10.5194/amt-5-657-2012, 2012.
- 25 Winklmayr, W., Reischl, G. P., Lindner, A. O., and Berner, A.: A New Electromobility Spectrometer for the Measurement of Aerosol Size Distributions in the Size Range from 1 to 1000 Nm, *J. Aerosol Sci.*, **22**, 289-296, doi:10.1016/S0021-8502(05)80007-2, 1991.
- Vlasenko, A., Sjögren, S., Weingartner, E., Gaggeler, H. W., and Ammann, M.: Generation of submicron Arizona test dust aerosol: Chemical and hygroscopic properties, *Aerosol. Sci. Tech.*, **39**, 452-460, doi:10.1080/027868290959870, 2005.
- 30 Zelenyuk, A., Imre, D., Earle, M., Easter, R., Korolev, A., Leaitch, R., Liu, P., Macdonald, A. M., Ovchinnikov, M., and Strapp, W.: In Situ Characterization of Cloud Condensation Nuclei, Interstitial, and Background Particles Using the Single Particle Mass Spectrometer, SPLAT II, *Anal. Chem.*, **82**, 7943-7951, doi:10.1021/ac1013892, 2010.

**Table 1: Overview of the ~~three~~four cloud events observed during the measurement campaign. Given are the total particle and cloud droplet number concentrations as well as the hygroscopicity-~~segregated~~dependent activation efficiencies and growth factors of 120 and 150 nm particles. The number fraction of less hygroscopic particles is denoted by  $f_{\text{GF}<1.25}$ .**

	Event #1		Event #2		Event #3		Event #4	
Time	08.10/20:46–23:45		11.10/20:25–21:56		13.10/05:57–07:40		20.10/00:01–04:26	
$N_{\text{tot}}$	2935 cm <sup>-3</sup>		699 cm <sup>-3</sup>		1442 cm <sup>-3</sup>		792 cm <sup>-3</sup>	
$N_{\text{act}}$	781 cm <sup>-3</sup>		135 cm <sup>-3</sup>		158 cm <sup>-3</sup>		69 cm <sup>-3</sup>	
	120 nm	150 nm	120 nm	150 nm	120 nm	150 nm	120 nm	150 nm
$f_{\text{act,DMPS}}$	0.20	0.40	0.29	0.55	0.37	0.68	0.39	0.68
$f_{\text{act,GF}\geq 0.80}$	0.32	0.48	0.29	0.55	0.52	0.72	0.39	0.68
$f_{\text{act,GF}<1.25}$	0	0	0	0.31	0	0	0.04	0.34
$f_{\text{act,GF}\geq 1.25}$	0.57	0.80	0.69	0.77	0.60	0.79	0.70	0.83
$\text{GF}_{\text{avg,GF}\geq 0.80}$	1.27	1.31	1.20	1.25	1.58	1.65	1.27	1.41
$\text{GF}_{\text{avg,GF}<1.25}$	1.13	1.13	1.05	1.06	1.00	1.00	1.01	1.02
$\text{GF}_{\text{avg,GF}\geq 1.25}$	1.38	1.42	1.41	1.42	1.68	1.71	1.50	1.58
$f_{\text{GF}<1.25}$	0.44	0.39	0.58	0.47	0.14	0.08	0.48	0.31

**Table 2: The average GFs for reference and high hygroscopicity scenarios and their absolute deviation from each other. The values shown in the parentheses correspond to the minimum and maximum values. The GFs for  $D_p = 80, 120$  and  $150$  nm originate from direct measurements, whereas the data for  $D_p = 200$  nm is obtained via extrapolation.**

	80 nm	120 nm	150 nm	200 nm
$GF_{\text{avg}}$ [Reference]	1.20 (1.04/1.29)	1.30 (1.18/1.43)	1.38 (1.25/1.49)	1.44 (1.27/1.58)
$GF_{\text{avg}}$ [High-GF]	1.40 (1.33/1.59)	1.43 (1.36/1.57)	1.47 (1.39/1.59)	1.49 (1.4/1.61)
$\Delta GF_{\text{avg}}$	0.20 (0.07/0.43)	0.13 (0.06/0.24)	0.09 (0.04/0.21)	0.05 (0/0.15)

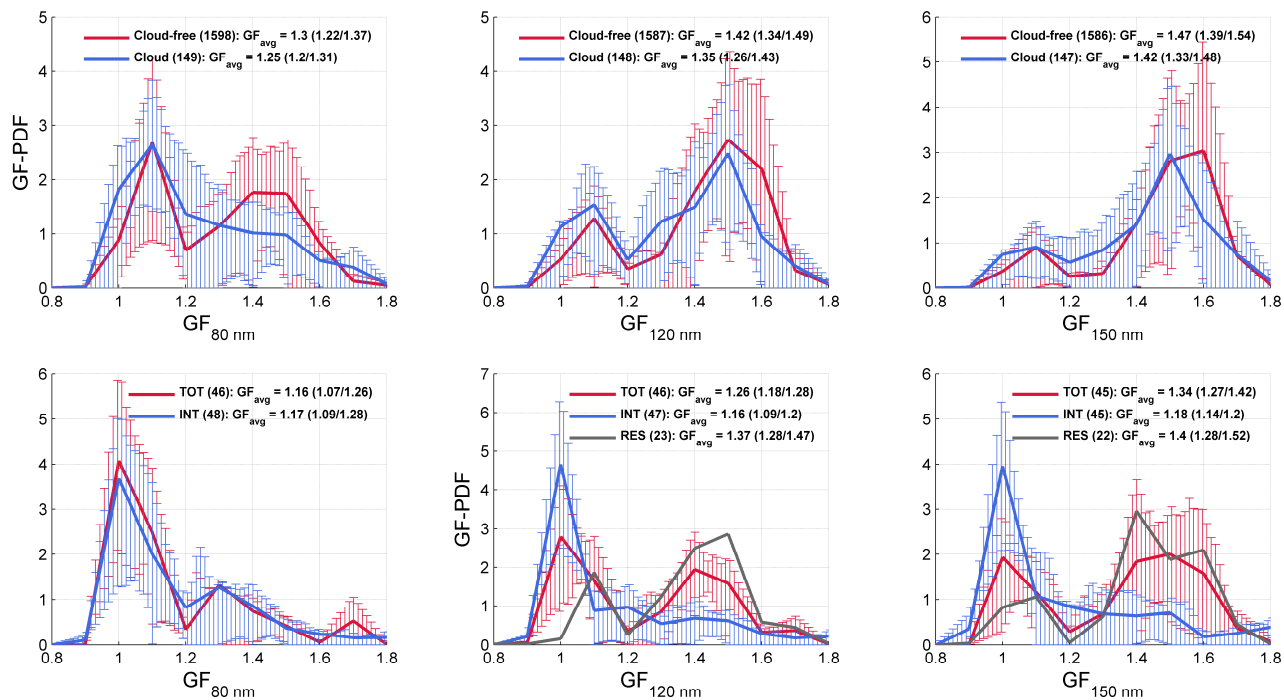
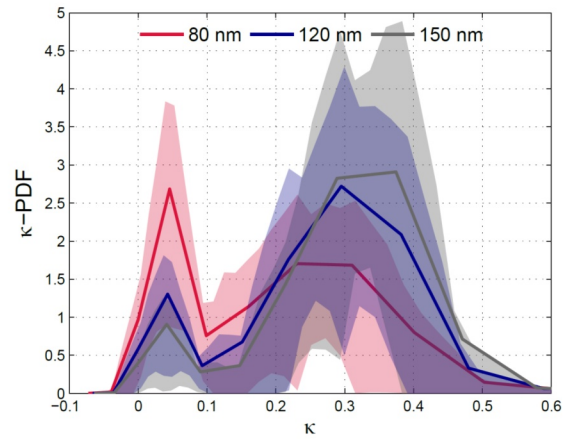
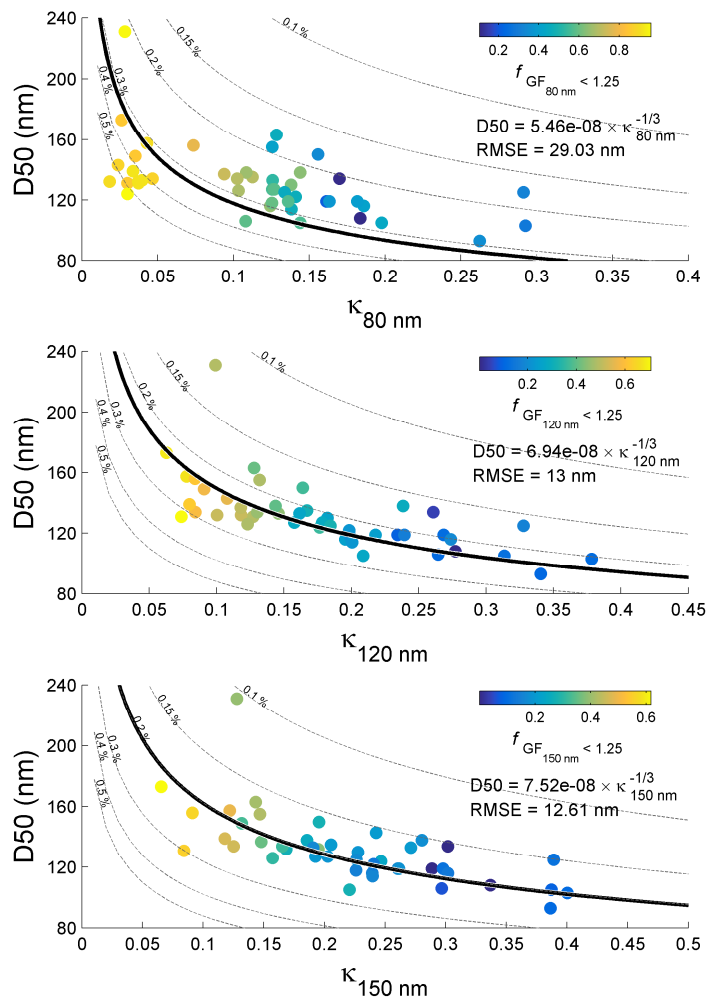


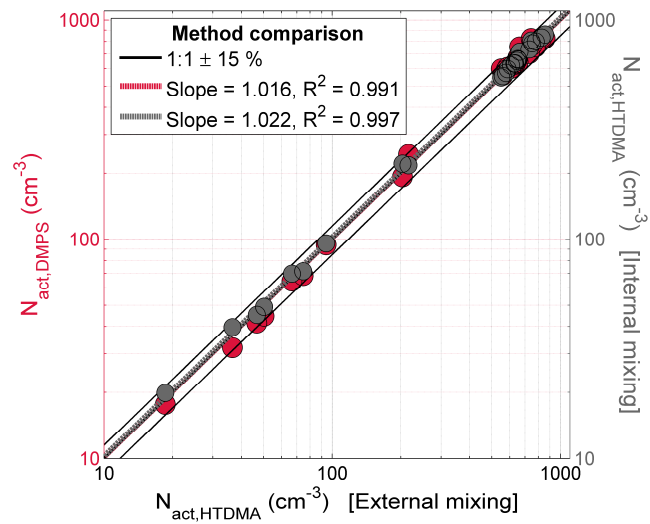
Figure 1: Top row: Average hygroscopicity of total aerosol at 90-% RH during cloudy (blue) and cloud-free (red) conditions (whole campaign). Bottom row: Average in-cloud hygroscopicity of total (red), interstitial (blue) and residual aerosol (black) during the **changingtwin** inlet period. The values shown in the parentheses represent the number of averaged observations and the 25<sup>th</sup> and 75<sup>th</sup> percentiles. In the graphs, the lower and upper quartiles are illustrated with whiskers.



**Figure 2: Mean  $\kappa$ -PDFs of 80, 120 and 150 nm particles calculated over the whole data set. The shaded areas represent the ranges between the 25<sup>th</sup> and 75<sup>th</sup> percentiles.**

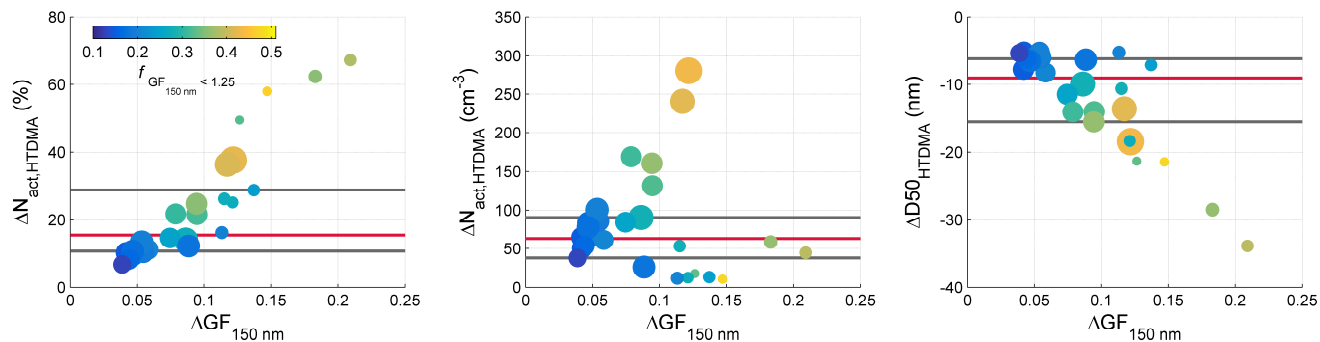


**Figure 3:** Critical activation diameter (D50) vs. size-averaged hygroscopicity ( $\kappa$ ) of 80 nm, 120 nm and 150 nm particles, as well as the power law fits (black lines) to the data. The data points are colored according to number fraction of less hygroscopic particles  $f_{GF}$ , and the grey dashed lines represent the numerical solutions of Köhler theory in the range of  $s_c = 0.1\% - 0.5\%$ .



**Figure 34.** Correlations between the estimated (HTDMA) and measured (DMPS) cloud droplet concentrations (red dots) and the external and internal mixing approaches (grey dots). Each data point represents an hourly average.





**Figure 45:** Simulated changes in cloud droplet number concentration ( $N_{\text{act,HTDMA}}$ ) and critical activation diameter ( $D_{50D50\text{HTDMA}}$ ) if all the particles belonged to the more hygroscopic mode. The marker size illustrates the total particle concentration in the range of  $388 \text{ cm}^{-3}$  to  $3316 \text{ cm}^{-3}$  and the data points are colored according to the less hygroscopic fraction (i.e. the fraction of particles merged into the more hygroscopic mode). The horizontal lines correspond to the 25<sup>th</sup>, 50<sup>th</sup> and 75<sup>th</sup> percentiles.