

Response to reviewer 1

This paper adds to an ongoing discussion of the importance of aerosol acidity on gas- particle partitioning, and how errors in modeled aerosol pH adversely affect model predictions. The subject is certainly of interest to readers of ACP.

However, the authors' arguments are not always stated clearly, particularly in the introduction. There are so many citations to prior literature throughout the paper that it is often unclear as to which aspects are new in the present manuscript. In some cases, studies are cited in support of a point that was not the conclusion (or even the subject) of the paper. The authors need to do a better job placing this work in the context of prior literature. In particular, one of the principal conclusions echoes the title of another paper currently under review for ACP by the same research group: Guo et al. (2017), The underappreciated role of non-volatile cations on aerosol ammonium-sulfate molar ratios.

We thank the reviewer for his/her comments and we hope that, after the suggested changes to the paper, it has been scientifically strengthened while also exhibiting greater clarity.

Specific Comments by line number

8 Suggest deleting "exacerbated by reductions in SO₂ emissions." These reductions do not exacerbate the bias. The bias in pH leads to a bias in predicted response to SO₂ emissions reductions.

The reviewer is correct – we removed the statement.

10-11 This is the first of many sentences in this paper that overuse semicolons. More importantly, the authors do not have available direct observations of PM_{2.5} pH for either 2001 or 2011 and should not imply they do. Instead I recommend something like "modeled PM_{2.5} pH using 2001 emissions compare favorably with pH inferred from observed species concentrations. Using 2011 emissions, however, leads to simulated pH increases of one unit, which is inconsistent with observations from that year."

The sentence has now been revised according to the reviewer's comment.

12-13 Instead of saying NVC are responsible for the (nonexistent) trend, clarify that overestimated NVC lead to this erroneous predicted increase in pH.

The statement has been changed and now reads "Non-volatile cations (K⁺, Na⁺, Ca⁺², and Mg⁺²) in the fine mode are found responsible for the erroneous predicted increase in aerosol pH of about 1 unit on average over the US"

13-15 This sentence is unclear. Please rephrase or delete.

Rephrased from "pH biases of 1 unit can induce a nitrate bias of 1-2 μg m⁻³ which may further increase in future projections, reaffirming an otherwise incorrect expectation of "nitrate substitution""

to

"Such an increase can induce a nitrate bias of 1-2 μg m⁻³ which may further increase in future projections, reaffirming an otherwise incorrect expectation of a significant "nitrate substitution""

20-26 Consider breaking this sentence up. Also, it should not be necessary to cite two papers twice in the same sentence.

The sentence has been revised to:

Aerosol acidity is a driver of many important atmospheric processes (Guo et al. 2015, Weber et al. 2016), catalyzing the conversion of isoprene oxidation products to form secondary organic aerosol (SOA) (Xu et al. 2015, Pye et al. 2013, Surratt et al. 2010, Eddingsaas et al. 2010), driving the semi-volatile partitioning of key aerosol species processes (Guo et al. 2015, Weber et al. 2016). High acidity can also lead to the solubilization of iron, copper and other trace metals in aerosol which may serve as nutrients for ecosystems (Meskhidze et al. 2003), but also prove toxic for humans (Ghio et al. 2012, Fang et al. 2017).

We feel that keeping the citations is appropriate in this case, since the literature for aerosol acidity is still developing in addition to each point referring to a different process. This way, the reader can more readily access the pertinent material if he/she so desires.

30 It is inappropriate to cite West et al. (1999) in support of an observed negative trend over 2001-2011 and beyond.

The reference has been removed, since as the reviewer pointed out, it is not appropriate here.

32 "ammonia ... is either constant or increasing." It is now mid-2018. Does this statement still hold, as implied by the use of present tense? Then please provide a more recent reference. Alternatively, if the authors intend to limit their statement to the 2001-2011 period, then use an appropriate tense to convey that meaning.

We updated the statement to reflect that it's intended for the 2001-2011 period.

35 "will become increasingly neutralized." I believe one of the points the authors are making is that the conceptual model of "neutral" aerosol is inapt. If so, I suggest deleting this unhelpful phrase, so that the sentence reads "have created the expectation that ammonium sulfate will be replaced, at least in part, by ammonium nitrate." Alternatively, please explain further what "neutralization" means in this context

Again, we thank the reviewer for identifying how the wording was less precise than desired. We replaced neutralized with "will become less acidic" for increased clarity, since this statement refers to an expected increase of aerosol pH.

38-48 I realize that the authors are criticizing the adequacy of the conceptual model regarding molar ratios, but even so the arguments should be stated clearly. If, in this conceptual model, the molar ratio of ammonium to sulfate is what is salient, then how are NVCs at all relevant?

NVCs are mentioned in line 40 with regards to their role in nitrate substitution and not molar ratios – they are not related to molar ratios as defined in the next sentences of the text.

In stating that modeling studies have corroborated this (mistaken) view, have these studies misapplied thermodynamic models? Or were those incorrect conclusions (that ammonium sulfate would be replaced by ammonium nitrate) based on the incomplete conceptual model rather than the full thermodynamic model?

The crux of the paper is that models - even if the thermodynamics are rigorous - can be predisposed to incorrect predictions/conclusions if the simulated pH is sufficiently different from that of the ambient aerosol. For the case shown in this work, CMAQ's inherent pH bias is related to a high bias in the concentrations of NVCs in the fine mode. Therefore, the conclusions of the previous studies were consistent with the emissions used in the model, but because of the pH bias - not consistent with the ambient aerosol behavior.

ISORROPIA itself uses the critical molar ratio in its calculations. Can the authors elaborate on when or to what extent this is appropriate?

This is a great question. ISORROPIA does indeed use molar ratios to define the major salts that can form (and deliquesce) in the aerosol. In this sense, molar ratios are useful because they define the stoichiometry. After that step, the thermodynamic equilibrium relationships in the aqueous, solid and gas phases determine the relative concentrations of the ions in solution and, together with electroneutrality and mass conservation arguments, determine the aerosol pH.

112-120 The stated aim of this study is to address the underlying reasons for the nitrate substitution paradox. However, it seems that the resolution to this paradox has already been published in several papers by this research group, as summarized in lines 65-82, with further discussion in the subsequent paragraphs. Please clarify how this study represents an advance over that previous work. "The role of internally-mixed nonvolatile cations in PM2.5 as a source of the pH bias is then assessed." Again, to what extent is this new, and distinct from the Guo et al. (2017) manuscript under review?

The work presented in Guo et al. (2017) investigates the role of NVCs in ambient measurements and how they can impact ammonia partitioning to address the Silvern et al. (2017) postulation that organics inhibit uptake of ammonia by aerosol, and that thermodynamic equilibrium for submicron aerosol simulations does not apply. The current manuscript, although focused on NVC, has a much different subject matter: it assumes thermodynamic equilibrium applies, but examines whether pH biases from having too much NVC in the fine mode biases the model response to nitrate aerosol. We show that although models, can provide predictions consistent with historically observed aerosol observations, will still incorrectly predict nitrate substitution for future sulfate reductions - and this is related to the simulated aerosol having too high of a pH (from too much NVC in the aerosol). The historical conditions were very high in sulfate/ammonium/nitrate such that a small bias in NVCs had relatively less impact on the simulations.

135 Please provide a reference for the Air Pollutant Emissions Trends Data. If these are constant scaling factors, consider providing them in a table in the article Supplement.

These data are directly provided by the EPA and the provided link serves as the reference - the constant scaling factors are now referenced in the manuscript (lines 151-153).

138 Please clarify whether this is the same version of ISORROPIA as used in the release version of CMAQ v5.0.2.

CMAQv5.0.2 uses ISORROPIA 2.1 while our study uses ISORROPIA 2.3 that includes the most recent bug-fixes. The changes between model versions do not affect the behavior in the model, and the conclusions of the study. This information has been added to the text.

143-148 Were these offline calculations computed separately for each of the three modes in CMAQ, or were the calculations done once by summing just the i and j modes? Given that CMAQ itself uses ISORROPIA, and HPLUS is one of the variables output by CMAQ, why was it necessary to run ISORROPIA again offline for each grid cell and hour of each year?

The offline calculations were done by summing the i and j modes in order to better approximate $PM_{2.5}$. As the reviewer correctly identifies, HPLUS is output by CMAQ, but only for the j mode, and by comparing just the j mode results with the measurements would render the comparison less accurate than the current approach. In addition, it would not be possible to calculate the impact of NVCs on aerosol pH or conduct sensitivity tests for nitrate substitution without offline tests.

In presenting seasonal and annual average pH and nitrate partitioning ratios, are these calculated from hourly values?

The seasonal values and nitrate partitioning ratios are calculated using hourly values. The annual average pH (Figure 1) is calculated using the annual average values of the CMAQ output.

160-171 The first sentence of this paragraph states that CMAQ captures the observed decreasing trends in SO_4 , NO_3 , and NH_4 . However, a few lines later the text states that ammonium levels "remain rather constant", and later in the same paragraph "aerosol nitrate concentrations remain relatively constant ... with small increases over the Eastern US." It is unnecessarily difficult to understand exactly what message the authors wish to convey.

We modified the paragraph for clarity, since it was indeed difficult to convey the appropriate message:

"For the main inorganic aerosol species (SO_4^{2-} , NO_3^- and NH_4^+), CMAQ captures the observed trends, as seen in the literature (Park et al. 2006, Hand et al. 2012, Blanchard et al. 2013a, b, Kim et al. 2015, Saylor et al. 2015) over the CONUS over the course of the decade (Figure S1). As expected, sulfate over the entire US drops significantly between 2001 and 2011 (~ 30%), with major decreases in the Eastern US (~2 $\mu g m^{-3}$). Areas impacted the most by these reductions are places of significant industrial activity or coal-fired electricity generating units (EGUs), such as the Ohio River Valley, Baton Rouge in Louisiana and South Carolina. Ammonium levels only experience small reductions which are a buffered response to the decrease in sulfate levels, and minimal changes in emissions. Local reductions (~20%) in ammonia are seen over North Carolina and Louisiana. Aerosol nitrate concentrations remain constant on average over the domain, with small increases over the Eastern US. The highest levels of ammonium are observed in areas with significant livestock, such as North Carolina and the Midwest; sulfate concentrations are the highest around the Ohio River Valley, due to SO_x emissions, and so is nitrate due to significant NO_x and ammonia emissions."

161 Here and throughout the Results and Discussion section there are many references cited, but it is often not clear why they are being cited. In some instances, the authors mean that their current results are in agreement with results reported previously. However, the distinction between "Results" (of the current manuscript) and "Discussion" (including comparison with prior literature) should be stated explicitly. In this particular example, "CMAQ captures the observed downwards trends (six references cited) over the CONUS during the course of the decade," are those references supporting the assertion that inorganic species have been declining? Or that CMAQ generally represents species concentrations? This is especially confusing given the comment above, that ammonium and nitrate are largely unchanged between 2001 and 2011 in the current manuscript.

This is an excellent point. The references were added as an evaluation step for our results, in order to show that the model behavior of inorganic species is consistent with what has been observed. The statement has been clarified (see previous comment).

176 The methods section states that ISORROPIA is called offline using hourly CMAQ outputs, but the caption to Figure 1 indicates the calculation is performed using annual averaged CMAQ concentration fields (and presumably also annual average temperature and relative humidity). Given the strongly nonlinear dependence of aerosol partitioning on T and RH, I am skeptical of the value of a calculation based on annual average inputs to ISORROPIA.

All the plots in the paper are generated using hourly data or are the result from averaging that data (e.g. Figure 5 & 6 the fields resulting from averaging the hourly values of additional nitrate and nitrate substitution respectively), apart from Figure 1. The reviewer is correct in pointing out that there is a nonlinear dependence of partitioning on T and RH, and that is why we used the same meteorology between both years, so that the only thing that changes is the emissions of key species. Therefore Figure 1 still presents a useful qualitative plot in order to show the average increase of aerosol pH over the decade. We now mention this in this section to avoid confusion.

183-187 "This trend suggests that pH will keep increasing... [four more references]." This discussion of the implications is repetitive and out of place here, especially since the authors later argue that the modeled increase is in disagreement with WINTER observations and is erroneous, at least partially due to overestimated NVCs

This part of the text has been removed to avoid repetition.

201-202 What is the meaning of citing Guo et al. (2015) and Xu et al. (2015) here? Those papers do not document the SEARCH data. Is the analysis performed here repeating work done in those papers?

We used the data and analysis of these studies in order to compare our results and therefore it is appropriate that we reference them at this point.

205 The caption to Figure 2 states "Blue and red lines are the CMAQ predicted pH for 2001 and 2011 respectively," but the methods section states that ISORROPIA was called offline using CMAQ inputs, and the y-axis label indicates ISORROPIA. Which is it? Also, the caption appears to have been truncated

All the pH values provided in Figure 2 come from offline ISORROPIA runs. We now clarify that the CMAQ predicted pH refers to the pH calculated using CMAQ outputs and ISORROPIA. The caption has also been fixed.

207 Why is Guo et al. (2015) being cited here, along with Figure 2? Are the same data presented in Guo et al. (2015)? Or is the current result consistent with that previous study?

The green trendlines in Figure 2 are the same data from Guo et al. 2015. This is now clarified in the figure caption.

215 "due to the increased relative effect of NVCs (Weber et al. 2016)". Is the conclusion that NVCs are relatively more important made by Weber et al. (2016)? Again, please clarify what findings are new in the present manuscript.

This is a statement made to explain the increase between the two simulation years. While this conclusion was made in Weber et al. (2016), it was not observed behavior in their dataset and it did not pertain to model results as in our study. In that light it constitutes a new finding.

215-217 Comparing Figure S5 to Figure 2, it is not at all obvious that the CMAQ values in S5 "better track" the observations by time of day than those in Figure 2. If this is an important point, it should be straightforward to substantiate it, such as via temporal correlations.

The reviewer is correct – the intent was to show that removal of NVCs from the calculations reduces the pH differences between years, while at the same time removing some of the additional variability introduced by NVCs. The statement has been revised to "Removal of all NVCs from the thermodynamic calculations (Figure S5), significantly reduces the pH differences between the 2001 and 2011 while removing some of the increased variability introduced by NVCs."

219 Of course the increase in pH is not proportional to the reduction in sulfate, since pH is logarithmic. The fact that aerosol responds non-linearly through volatilization of ammonia was stated previously.

The sentence that follows the sentence quantifies the reduction in sulfate versus the reduction in pH in the model results; we found this important to mention.

224-225 It is strange to relate the pattern of the bias (difference between CMAQ predictions and SOAS measurements) to the pattern of the NVC concentrations. Moreover, I do not see the pattern referred to: the green line is between the red and blue lines up to about 8 in Fig. 2g, after which the model is negatively biased.

The positive bias in the early morning hours for SOAS coincides with the increased presence of NVCs. We rewrote the statement to clarify "The biases follow the pattern of NVCs present, by being negatively biased until noon and positively biased for the rest of the day (Figure 2 and Figure S4). The bias is particularly evident in the early morning hours where NVC concentrations reach a maximum (Figure S4)."

242-244 Foroutan et al. (2017) do not discuss pH at all.

The reference has been removed.

293-294 If ψ depends on the effective Henry's law constant for HNO_3 , which depends on H^+ , then ψ is not a constant.

Indeed! We now clarify that for the needs of the paper we use it as a fitting parameter.

565 Figure 3 caption: are the Weber et al. (2016) measurements from the Centerville site? Do the CMAQ lines correspond to averages over the Eastern US domain or results at a single grid cell?

Yes the measurements are from the Centerville site. The CMAQ lines correspond to results from the gridcell where Centerville is located. We now clarify this in the caption.

Technical Corrections by line number

22, 186 Surratt is misspelled.

We apologize for the typo – it has been corrected.

90-93 Again, there is no need to cite the same three papers twice in the same sentence.

Indeed! We have reduced the references.

97 "find only minimal differences between predicted pH" is awkward. Perhaps "differences in predicted pH" or "differences in pH predictions."

Revised to "differences in pH predictions".

130-131 "to eliminate potential biases of temperature and relative humidity on pH predictions." It would be clearer to state "to eliminate the effect of differences due to temperature and relative humidity on pH predictions."

Updated statement to the one suggested by the reviewer.

149-153 This is a run-on sentence.

The sentence has been revised to "The thermodynamic calculations online and offline were carried out in forward mode, meaning that the temperature, relative humidity, as well as all aerosol and gas phase concentrations were known and used as input, while at the same time assuming that the aerosol is in a metastable state, where only one aqueous phase is allowed to exist (Fountoukis & Nenes 2007)."

200 Clarify that these urban sites are in Atlanta, Georgia and the rural sites are also in Georgia.

Location added for all the sites.

202 sites is misspelled.

Changed "cites" to "sites".

285 "out" should be "our"

Corrected.

287-289 The authors should be consistent as to whether this is "sulfate substitution" or "nitrate substitution."

The title of the section has been changed for consistency to "The impact of pH biases on nitrate partitioning and "sulfate nitrate substitution".

303 Should this also be "nitrate substitution" rather than "nitrate partitioning"?

Changed from "nitrate partitioning" to "nitrate substitution".

581 Caption is missing the word "change". The caption says "winter" and "summer but the figure titles say "January" and "July."

Caption has been updated and now also reads January and July (the mid-month of the season were picked for this plot).

424-431 The same paper is listed twice, with differing author lists

Thank you for pointing this out! The duplicate has now been removed.

Response to reviewer 2

The MS could be published without revision

We would like to sincerely thank the reviewer for his/her recommendation to publish the paper. All the changes suggested by the first reviewer have been implement and it is our hope that the quality of the manuscript has further been improved.

Understanding nitrate formation in a world with less sulfate.

Petros Vasilakos¹, Armistead Russell², Rodney Weber³, and Athanasios Nenes^{1,3,4,5†}

¹ School of Chemical and Biomolecular Engineering, Georgia Institute of Technology, Atlanta, Georgia, 30332, USA

² School of Civil and Environmental Engineering, Georgia Institute of Technology, Atlanta, Georgia, 30332, USA

³ School of Earth and Atmospheric Sciences, Georgia Institute of Technology, Atlanta, Georgia, 30332, USA

⁴ Institute of Chemical Engineering Sciences, Foundation for Research and Technology-Hellas, Patras, GR 26504, Greece

⁵ Institute for Environmental Research and Sustainable Development, National Observatory of Athens, Palea Penteli, GR 15236, Greece

†Corresponding Author: A. Nenes (athanasios.nenes@gatech.edu)

Abstract

SO₂ emission controls, combined with modestly increasing ammonia, have been thought to generate aerosol of significantly reduced acidity where sulfate is partially substituted by nitrate. However, neither expectation agrees with decadal observations in the Southeastern US, suggesting that a fundamentally different response of aerosol pH to emissions changes is occurring. We postulate this “nitrate substitution paradox” arises from a positive bias in aerosol pH in model simulations, ~~exacerbated by reductions in SO₂ emissions~~. This bias can elevate pH to where nitrate partitioning is readily promoted, leading to behavior consistent with “nitrate substitution”. CMAQ simulations are used to investigate this hypothesis; modeled PM_{2.5} pH using 2001 emissions compare favorably with pH inferred from observed species concentrations. Using 2011 emissions, however, leads to simulated pH increases of one unit, which is inconsistent with observations from that year~~predictions of PM_{2.5} pH for 2001 emissions compare favorably with observations; for 2011 emissions however, predicted pH increases by 1 unit, presenting a positive trend not seen in the observations. Non-volatile cations (K⁺, Na⁺, Ca⁺², and Mg⁺²) in the fine mode are found responsible for the erroneous predicted increase in aerosol pH of about 1 unit on average over the US. Non-volatile cations (K⁺, Na⁺, Ca⁺² and Mg⁺²) in the fine mode are found responsible for most of this trend. Such an increase can induce a nitrate bias of 1-2 μg m⁻³ which may further increase in future projections, reaffirming an otherwise incorrect expectation of a significant “nitrate substitution. pH biases of 1 unit can induce a nitrate bias of 1-2 μg m⁻³ which may further increase in future projections, reaffirming an otherwise incorrect expectation of “nitrate substitution”.~~ Evaluation of predicted aerosol pH against thermodynamic analysis of observations is therefore a critically important, but overlooked, aspect of model evaluation for robust emissions policy.

Formatted: Font: (Default) Times New Roman, 12 pt, Superscript

Formatted: Font: (Default) Times New Roman, 12 pt, Superscript

Formatted: Font: (Default) Times New Roman, 12 pt, Superscript

Formatted: Font: (Default) Times New Roman, 12 pt, Superscript

Formatted: Font: (Default) Times New Roman, 12 pt, Superscript

Introduction

~~Aerosol acidity is a driver of many important atmospheric processes (Guo et al. 2015, Weber et al. 2016), catalyzing the conversion of isoprene oxidation products to form secondary organic aerosol (SOA) (Xu et al. 2015, Pye et al. 2013, Surratt et al. 2010, Eddingsaas et al. 2010), driving the semi-volatile partitioning of key aerosol species processes (Guo et al. 2015, Weber et al. 2016). High acidity can also lead to the solubilization of iron, copper and other trace metals in aerosol which may serve as nutrients for ecosystems (Meskhidze et al. 2003), but also prove toxic for humans (Ghio et al. 2012, Fang et al. 2017).~~ Aerosol acidity is a driver of many important atmospheric processes (Guo et al. 2015, Weber et al. 2016), catalyzing the conversion of isoprene oxidation products to form secondary organic aerosol (SOA) (Xu et al. 2015, Pye et al. 2013, Surratt et al. 2010, Eddingsaas et al. 2010), driving the semi-volatile partitioning of key aerosol species processes (Guo et al. 2015, Weber et al. 2016), as well as the solubilization of iron, copper and other trace metals in aerosol which may serve as nutrients for ecosystems (Meskhidze et al. 2003), but also prove toxic for humans (Ghio et al. 2012, Fang et al. 2017). Significant reductions in primary pollutant emissions over the last decades has greatly improved air quality in the developed world, and is also thought to fundamentally affect aerosol acidity. SO₂, an important aerosol precursor and a major driver of its acidity, has seen decreases of about 6% yr⁻¹ over the 2001-2011 period alone in the US, with a continued anticipated downward trend (West et al. 1999, Pinder et al. 2007, 2008). Emissions of NO_x and the resulting acidic HNO₃, are also declining. In contrast, ammonia, the primary alkaline fine mode aerosol precursor, ~~is was~~ either constant or increasing during this period (Pinder et al. 2007, 2008, Heald et al. 2012), owing to intensified agricultural activity and livestock farming from the demands of population growth. These trends have created the expectation that the aerosol has and will become increasingly ~~neutralized-less acidic~~ (West et al. 1999, Pinder et al. 2007, 2008, Heald et al. 2012, Tsimpidi et al. 2007, Saylor et al. 2015), with ammonium sulfate being replaced, at least in part, by ammonium nitrate (West et al. 1999, Bauer et al. 2007, Bellouin et al. 2007, Li et al. 2014, Goto et al. 2016).

The concept of “nitrate substitution” of sulfate has largely been based on the notion that nitrate is volatile when the aerosol is acidic, and in turn aerosol is acidic when insufficient amounts of total ammonia (i.e., gas+aerosol) or dust non-volatile cations (NVCs) exist to neutralize aerosol sulfate. Based on this conceptual model, aerosol ionic molar ratios have largely been used as proxies of aerosol acidity (pH), so that when the aerosol ammonium to sulfate molar ratio

approaches 2 (the composition of ammonium sulfate), aerosol is assumed “neutral” and only then nitrate aerosol can form (Fisher et al. 2011, Hennigan et al. 2015, Wang et al. 2016, Silvern et al. 2017). Modeling studies have corroborated this view, predicting that nitrate substitution may be prevalent in the future, including the Southeastern US (SE US) (Heald et al. 2014, Baeur et al. 2007, Bellouin et al. 2011, Li et al. 2014, Goto et al. 2016, Vayenas et al. 2005, Karydis et al. 2016). A more careful analysis however (Guo et al. 2015, Weber et al. 2016, Hennigan et al. 2015, Guo et al. 2016) reveals that this conceptual model of aerosol acidity and conditions for nitrate substitution fail; thermodynamic analysis of SE US aerosol observations instead show that fine mode aerosol remains strongly acidic, despite a 70% reduction in sulfates, and more than sufficient total ammonia to neutralize it. The strong acidity is maintained by the large difference in volatility between sulfate and ammonia (Guo et al. 2015, Weber et al. 2016), so large changes in total ammonia concentrations are required for a notable change in aerosol acidity, about one order of magnitude increase in NH_3 concentration per unit increase in aerosol pH (Guo et al. 2015 & 2017a). However, ammonia gas deposits relatively rapidly, limiting its build up except in high emissions regions. Throughout the decade, the levels of aerosol nitrate have remained relatively constant throughout the US (Guo et al. 2015, Weber et al. 2016, Pye et al. 2009). The persistent strong aerosol acidity in turn explains why nitrate aerosol has not considerably increased over the last decades, and is unlikely to appear in the immediate future in the SE US. These findings constitute a “paradox”, as the same thermodynamic models (e.g., ISORROPIA-II Fountoukis & Nenes 2007) used to demonstrate the aerosol tendency for strong acidity in the SE US (Guo et al. 2015, Weber et al. 2016) using ambient data, is also used in 3D modeling studies (Pye et al. 2009, Heald et al. 2012) for the region that predict nitrate substitution as a possible aerosol response.

Reconciling the “nitrate substitution paradox” requires a careful examination of aerosol thermodynamics and the conditions under which nitrate partitioning to the aerosol is favored. Meskhidze et al. (2003) and later Guo et al. (2016) showed that for aerosol nitrate formation to occur, aerosol pH needs to exceed a certain characteristic value (that depending on the temperature and the amount of liquid water, ranges between a pH of 1.5 and 3; Guo et al., 2017). If aerosol pH is therefore high enough (typically above a pH of 2.5 to 3), a behavior consistent with “nitrate substitution” emerges, because any inorganic nitrate forming from NO_x chemistry mostly resides in the aerosol phase. When pH is low enough (typically below 1.5 to 2), nitrate remains exclusively in the gas phase (as HNO_3), regardless of the amount produced, and “nitrate substitution” is not

observed. Between these “high” and “low” pH values, a “sensitivity window” emerges (of typically 1-1.5 pH units), where partitioning shifts from nitrate being predominantly found as gas to where it is mostly found as an aerosol. Therefore, if a model is for any reason biased in its prediction of aerosol pH, it may be preconditioned towards nitrate prediction biases. The sensitivity to pH biases is strongest when the aerosol lies in the pH “sensitivity window”, which is often the case for atmospheric aerosol (Guo et al. 2015, 2016 & 2017, Bougiatioti et al. 2016). When below this “pH sensitivity window”, aerosol nitrate is almost nonexistent and relatively insensitive to emissions (and pH biases); when above the window, almost all nitrate resides in the aerosol phase, and directly responds to NO_x emission controls.

If aerosol were composed only of non-volatile sulfate and semi-volatile nitrate and ammonium, prediction biases in pH could result only from errors in RH, and large errors (e.g., order of magnitude) of NH₃, NO_x and SO₂ because pH is relatively insensitive to changes in these aerosol precursors (Hennigan et al. 2015). Acidity however can also be modulated by other soluble inorganic cations from seasalt and mineral dust, such as K⁺, Na⁺, Ca⁺² and Mg⁺². The low volatility of these cations allows them to preferentially neutralize sulfates over NH₃, and, even in small amounts elevate particle pH to levels that can promote the partitioning of nitrates to the aerosol phase (Fountoukis & Nenes 2007, Guo et al. 2017). NVCs tend to reside in the coarse mode aerosol (~~Guo et al. 2015, West et al. 1999, Vayenas et al. 2005~~), with a fraction found in smaller particles, while sulfate tends to reside in the fine mode (e.g., West et al. 1999, Vayenas et al. 2005, Guo et al. 2015); the degree to which NVCs can affect fine mode pH therefore lies in the degree to which the two types of species mix across different particle sizes. Potential interactions between inorganics-organics can also affect aerosol acidity. However, recent studies driving thermodynamic models utilizing water associated with organics find only minimal differences in pH predictions~~differences between predicted pH~~ (Guo et al. 2015, Bougiatioti et al. 2016, Liu et al. 2017, Pye et al., 2018, Song et al. 2018). In the presence of very high NVCs (for example in sea-spray aerosol), where the aerosol has much higher pH, the pH can approach the pK_a of organic acids, leading to conditions where their dissociation can contribute to aerosol acidity (Laskin et al. 2012).

Although aerosol models are evaluated in terms of their ability to predict the concentration of aerosol species (including across size), no studies to date focus on their ability to predict aerosol pH across size, even though it is known to potentially vary up to 6 units (Fang et al. 2017,

Bougiatioti et al. 2016, Li et al. 2017). Evaluation of models in this context is challenging, since there is no established dataset of aerosol acidity - although that is rapidly changing, with pH estimates derived from a combination of observations and models (e.g., Guo et al., 2015; Bougiatioti et al., 2016; Guo et al., 2017; Liu et al., 2017; Song et al., 2018) - . Furthermore, given that most of this pH variability occurs in the PM_1 to $PM_{2.5}$ range (Fang et al. 2017), it is quite likely that model assumptions on how aerosol species interact within a mode (degree of internal mixture), especially for particles in the 1-2.5 μm range, may lead to pH prediction biases that drive model behavior.

This aim of this study is to address the underlying reasons for the “nitrate substitution” paradox, and in the process, provide a conceptual framework for quantifying and understanding the importance of aerosol pH biases. The guiding hypothesis of this work is that aerosol pH prediction bias fundamentally changes predicted aerosol behavior and the underlying cause of the paradox. The approach is demonstrated with the Community Multiscale Air Quality (CMAQ) model (Byun & Schere 2006) and is based on predictions of pH over the 2001-2011 period in the Southeastern/Eastern US, being the region for which aerosol pH trends are constrained by observations. The role of internally-mixed nonvolatile cations in $PM_{2.5}$ as a source of the pH bias is then assessed.

Methods

Predicting aerosol pH and composition

CMAQ is a three-dimensional, Eulerian, atmospheric chemistry and transport model, that simulates the processes atmospherically relevant compounds undergo, such as emission, diffusion, chemical reactions and deposition (Byun & Schere 2006). CMAQ version 5.0.2 was used in this study, and simulations were carried out using a 36-km horizontal resolution grid, with 13 vertical layers, over the continental US (CONUS) for the entire years of 2001 & 2011. Meteorological data were obtained offline from the Weather Research Forecasting (WRF) model. The same meteorology was used between the two years to eliminate the effect of differences due to temperature and relative humidity on pH predictions.~~years to eliminate potential biases of temperature and relative humidity on pH predictions.~~ Model-ready emissions for 2011 were obtained using the National Emissions Inventory 2011 inventory (NEI 2011) for the Carbon Bond 05 (CB05) chemical mechanism. To estimate the 2001 emissions, the 2011 emissions for SO_2 ,

NO_x, NH₃, CO, VOCs and primary PM from anthropogenic sources were scaled on a per-species basis using the Air Pollutant Emissions Trends Data; emissions for other species were kept constant. Specifically anthropogenic CO, NO_x, primary PM and SO₂ emissions were increased by 44%, 45%, 15% and 246% respectively, while VOC and NH₃ emissions were reduced by 6% and 14% respectively. Emissions of biogenic species were calculated online using the Biogenic Emission Inventory System (BEIS).

The aerosol thermodynamic model ISORROPIA-II (subversion 2.12 - dated ~~2012~~ 2008 – Fountoukis & Nenes 2007) was used online in CMAQ to drive the semivolatile partitioning of inorganic species, as well as offline to analyze the predicted PM_{2.5} pH, nitrate partitioning tendency and sensitivities thereof to nonvolatile cations. It should be noted that ISORROPIA and CMAQ only account for the thermodynamic interactions between inorganic species and do not treat organics. Offline calculations were conducted using the hourly gas and particle phase concentrations output from CMAQ for the 2001 and 2011 simulations, which includes NVCs, and using them as input to ISORROPIA-II (subversion 2.3 - dated 2012). The thermodynamic calculations online and offline were carried out in forward mode, meaning that the temperature, relative humidity, as well as all aerosol and gas phase concentrations were known and used as input, while at the same time assuming that the aerosol is in a metastable state, where only one aqueous phase is allowed to exist (Fountoukis & Nenes 2007). This assumption is not always necessarily true, especially under conditions of low relative humidity (RH<30%) where the aerosol can crystallize or exist in glassy, amorphous state (where in this case thermodynamic equilibrium is not reached), observational data of liquid water content shows that it is most often a valid assumption (Guo et al. 2015, Bougiatioti et al. 2016), and other studies suggest that the phase state may not strongly affect predicted pH (Song et al., 2018). We run the model under a variety of conditions to determine the impact of NVCs from dust and sea salt (Ca, Mg, K, Na) on pH, its seasonal variability, as well as the effect of pH and temperature on nitrate partitioning.

Results and discussion

Predicted Sulfate, ammonium & nitrate

For the main inorganic aerosol species (SO₄²⁻, NO₃⁻ and NH₄⁺), CMAQ captures the observed trends, as seen in the literature (Park et al. 2006, Hand et al. 2012, Blanchard et al. 2013a, b, Kim et al. 2015, Saylor et al. 2015) over the CONUS over the course of the decade (Figure S1).

Formatted: Font: (Default) Times New Roman, 12 pt, Superscript

Formatted: Font: (Default) Times New Roman, 12 pt, Superscript

Formatted: Font: (Default) Times New Roman, 12 pt, Superscript

As expected, sulfate over the entire US drops significantly between 2001 and 2011 (~ 30%), with major decreases in the Eastern US (~2 $\mu\text{g m}^{-3}$). Areas impacted the most by these reductions are places of significant industrial activity or coal-fired electricity generating units (EGUs), such as the Ohio River Valley, Baton Rouge in Louisiana and South Carolina. Ammonium levels only experience small reductions which are a buffered response to the decrease in sulfate levels, and minimal changes in emissions. Local reductions (~20%) in ammonia are seen over North Carolina and Louisiana. Aerosol nitrate concentrations remain constant on average over the domain, with small increases over the Eastern US. The highest levels of ammonium are observed in areas with significant livestock, such as North Carolina and the Midwest; sulfate concentrations are the highest around the Ohio River Valley, due to SO_x emissions, and so is nitrate due to significant NO_x and ammonia emissions.

Formatted: Font: (Default) Times New Roman, 12 pt, Superscript

For the main inorganic aerosol species (SO_4^{2-} , NO_3^- and NH_4^+), CMAQ captures the observed downwards trends, as seen in the literature (Park et al. 2006, Hand et al. 2012, Blanchard et al. 2013a, b, Kim et al. 2015, Saylor et al. 2015) over the CONUS during the course of the decade (Figure S1). As expected, sulfate over the entire US drops significantly between 2001 and 2011, by about 30%, with major decreases in the Eastern US of about 2 $\mu\text{g m}^{-3}$. Areas impacted the most by these reductions, are places of significant industrial activity or with significant coal fired electricity generating units (EGUs), such as the Ohio River Valley, Baton Rouge in Louisiana and South Carolina. Ammonium levels remain rather constant, since ammonia saw minimal emission changes over the decade, and only experience small reductions which are a buffered response to the decrease in sulfate levels. Local reductions (~20%) in ammonia are seen over North Carolina and Louisiana. Aerosol nitrate concentrations remain relatively constant on average over the domain, with small increases over the Eastern US. The highest levels of ammonium are observed in areas with significant livestock, such as North Carolina; sulfate concentrations are the highest around the area of the Ohio River Valley, and so is nitrate due to significant NO_x and SO_x emissions.

Formatted: Font: (Default) Times New Roman, 12 pt, Subscript

Formatted: Font: (Default) Times New Roman, 12 pt, Subscript

Predicted Annual & seasonal pH

Figure 1 depicts the annual average pH fields over the US for 2001 and 2011, calculated using the annual average for $\text{PM}_{2.5}$ concentrations, with the study domain of the Eastern US outlined. Simulations show that there are noticeable differences between the two years, localized

mainly in desert regions along the US-Mexico border, Southern Texas and the Eastern US. The sulfate reductions in the Eastern US, appear to have a major impact on model results, leading to significant increases of aerosol pH in the area. For 2001, the average yearly pH for the Eastern US is 1.6, consistent with recent literature and observations from the WINTER campaign (Guo et al. 2015 & 2016, Weber et al. 2016) (Figure 1a). For 2011, however, predicted pH increases to about 2.5 – almost a unit higher (Figure 1b). ~~This trend suggests that pH will keep increasing with future sulfate reductions, something that can lead to significant increases in predicted nitrate, as well as changes in SOA chemistry which heavily depends on aerosols (Xu et al. 2015, Pye et al. 2013, Surrat et al. 2010, Eddingsaas et al. 2010), especially in the SE US.~~

Seasonal pH trends are also positive over the Eastern US, with the summertime (Figure S2f) experiencing stronger increases than in the winter (Figure S2c), being 0.5-1.5 for winter and 0.5-2 for summer. Much of the seasonal variability is driven by changes in temperature and relative humidity; increased relative humidity (RH) leads to less acidic aerosol, since liquid water content and pH are inversely related (Guo et al. 2015 & 2016), while increased temperatures promote low RH and therefore more acidic aerosol. The desert areas of the Western US, Southern Texas, Florida, SW Alabama and Mississippi are the most sensitive in the wintertime (Figure S2a, b), while the Central US is mostly unaffected. During the summer, the entire Central US is much more strongly impacted, while the wintertime sensitive areas exhibit only minor pH increases (Figure S2d, e).

Model evaluation of pH

Model results for both simulation years were compared to thermodynamic analysis of measurements from three urban sites in Atlanta, Georgia (Jefferson Street, JST; Georgia Tech, GT; Atlanta Road-Side, RS) and two rural (Yorkville, Georgia - YRK; and Centerville, Alabama - CTR) SEARCH network sites (Guo et al. 2015, Xu et al. 2015). Measurements for the urban ~~es~~ sites and the YRK site, were taken between May and December 2012 for the SCAPE study, while measurements from the CTR site were for the SOAS campaign period (June 1st to July 15th 2013) (Guo et al. 2015, Xu et al. 2015). The three urban sites are contained within the same CMAQ grid cell. All urban sites (Figure 2a, b, c, d), exhibit an early morning/late night pH maximum, and an afternoon minimum throughout the year (Guo et al. 2015). This a combination of two factors; RH being highest during the early morning/late night, which increases water uptake and hence decreases acidity (Guo et al. 2015) (Figure S3), and the presence of crustal elements in significant

quantities during that time (Figure S4). The model pH closely tracks the diurnal profile of predicted cations (Figure S4), indicating that they have an important impact on predicted pH, which, however, is not seen in the measurements (Figure 2), since they make up a much smaller percentage of observed PM_{2.5}. Despite the presence of NVCs, the pH remains low for both simulation years but it tends to be higher in 2011, because of sulfate levels that are approximately half of those in 2001 across all sites, leading to the increased relative effect of NVCs (Weber et al. 2016). Removal of all NVCs from the thermodynamic calculations (Figure S5), ~~allows the simulated diurnal profiles to better track the measurements~~ significantly reduces the pH differences between 2001 and 2011 while removing some of the increased variability introduced by NVCs. At the same time, a negative bias is introduced to the simulated pH, which is more prominent for the urban sites even after the sulfate reductions.

The increase in pH is not proportional to the reduction in sulfate, since aerosol responds non-linearly to such reductions, through the volatilization of ammonia (Weber et al. 2016). Depending on location, sulfate reductions range from 38 to 55%, while the corresponding pH increase is much lower, pointing to the fact that cations, although small in amount, tend to have a disproportionately strong impact on acidity. For the SOAS campaign period (Figure 2g), pH is underestimated especially for 2001. The biases follow the pattern of NVCs present, by being negatively biased until noon and positively biased for the rest of the day (Figure 2 and Figure S4). The bias is particularly evident in the early morning hours where NVC concentrations reach a maximum (Figure S4). ~~especially in the early morning hours where NVC concentrations reach a maximum (Figure S4).~~ For the YRK site (Figure 2b, e), pH is overall underestimated during the winter and overestimated during the summer. Similarly to the urban sites, the predicted RH agrees well with the measurements (Figure S3), albeit with a positive afternoon bias during the summer. The diurnal profile of pH closely tracks the one of cations, further suggesting they may be directly related to the bias.

When evaluating the predicted pH trend for CTR, the model results exhibit a clear, increasing trend of 0.6 pH units per decade (Figure 3). This trend is inconsistent with recent thermodynamic analysis of observations suggesting a slight decrease in pH over the same time period for the SE US (Guo et al. 2015 & 2016, Weber et al. 2016). If this bias in predicted pH trend continues, it can have profound implications for future regulatory modeling, since the increased pH can lead to elevated levels of model nitrate, reproducing nitrate substitution (Bauer et al. 2007,

Bellouin et al. 2011, Li et al. 2014, Goto et al. 2016). Possible reasons behind this pH bias could be overestimated ammonia emissions, underestimated sulfate, or, the presence of NVCs in $PM_{2.5}$. The first two possibilities are unlikely, given the agreement of predicted ammonium and sulfate with previous studies (Park et al. 2006, Hand et al. 2012, Blanchard et al. 2013a, b, Kim et al. 2015, Saylor et al. 2015), and, the relative insensitivity of pH to ammonia and sulfate (Weber et al. 2016, Silvern et al. 2017). However, NVCs, if inappropriately distributed in $PM_{2.5}$, can exert important biases on pH (Meskhidze et al. 2003, Karydis et al. 2016, Guo et al. 2017a, ~~Foroutan et al. 2017~~). Indeed, offline calculations of aerosol pH excluding the influence of NVCs mitigates most of the predicted positive trend of 0.6 pH units per decade when all the aerosol species are considered (Figure 3), while also reducing standard error. The remaining bias may arise from errors in model RH, given that it controls water uptake and drives much of the diurnal variability in pH (Guo et al. 2015). Usage of observed (instead of predicted) RH in the thermodynamic calculations, did not impact the predicted pH more than 0.1 units (Figure S6). A more thorough evaluation of the remainder of the pH bias, as well as the impact of NVCs when included in appropriate quantities, requires a far more extensive analysis of the emissions profiles – especially regarding its diurnal variability - and observational dataset than the one available for this study (Henneman et al. 2017, Guo et al. 2017).

The pH bias becomes negative for most of the CMAQ Eastern US when removing all NVCs from the calculations (Figure S5). This, combined with the considerable model skill for sulfate, nitrate and ammonium when compared to literature (Henneman et al. 2017) implies that pH biases are not related to errors in the major inorganic ions or biases in meteorological parameters (humidity and temperature), but rather in the NVCs which are minor contributors to $PM_{2.5}$, hence poorly constrained. For the SEARCH sites NVCs comprise 5 to 10% of the total inorganic $PM_{2.5}$ (Guo et al. 2015), which is significantly less than what the model predicted values that are a factor of 4 higher than the measurements. The most important result therefore is that NVCs are a considerable source of pH prediction uncertainty when not accounted for correctly (Supplementary material: The role of NVCs in $PM_{2.5}$ pH). It should be noted that for the summertime at the CTR location, the ammonium and sulfate values are biased low in CMAQ by a factor of 3 using the Weber et al. 2016 data. These biases however are consistent with literature and typical of CTMs (Henneman et al 2017).

The SEARCH sites have been thoroughly studied in previous literature (Guo et al, 2015 & 2017a, Xu et al. 2015, Weber et al. 2016) and given the high concentrations of organic mass observed throughout the year, they present an excellent case study for the potential impact of organics on pH. Recent studies indicate that organic aerosol can have a secondary, but still quantifiable impact on aerosol pH, especially when allowed to interact with inorganics (Pye et al. 2018). Most 3D models do not account for potential, non-ideal interactions between the two, in addition to not including organics in thermodynamic calculations, which, if the above statement is true, can lead to significant predictive pH errors. To investigate the role of organics on pH we used the E-AIM model (Wexler & Clegg 2002, Friese & Ebel 2010, Clegg et al. 1992) (<http://www.aim.env.uea.ac.uk/aim/aim.php>) on our model results for the SEARCH sites, to calculate partitioning with organics/inorganic interactions considered. We tested a variety of organic compounds under different scenarios to determine the potential of organics to influence pH (see SI: Organic acids and pH).

We find that addition of organic compounds to the model, did not have a significant impact on acidity ($\leq 2\%$ pH deviation from the baseline value) compared to the baseline run, apart from the cases where RH was higher than 80% and the mole fraction of organic acids in the aqueous phase is greater than 25% (SI: Organic acids and pH). We conclude that the maximum impact of organics on aerosol pH can likely result from the effects of liquid-liquid phase separation (Pye et al. 2018), but of insufficient magnitude to sustain a positive aerosol pH trend as observed in our basecase simulation.

The impact of pH biases on nitrate partitioning and “sulfate-~~nitrate~~ substitution”

To understand the importance of pH biases on nitrate partitioning and the potential for predicting a behavior consistent with “nitrate substitution”, we express the CMAQ output in each grid cell in terms of the nitrate partitioning ratio, $\epsilon_{NO_3} = \frac{[NO_3^-]}{[HNO_3] + [NO_3^-]}$. It can be shown that ϵ_{NO_3} follows a simple sigmoidal curve (Meskhidze et al. 2013, Guo et al. 2016), $\epsilon_{NO_3} = 1 - \frac{[H^+]}{[H^+] + L \cdot T \cdot \Psi}$, where L is the liquid water content, T is ambient temperature, $[H^+]$ is the concentration of H^+ in the aerosol aqueous phase, and $\Psi = \frac{R \cdot [HNO_3]}{1000 \cdot P_0}$ is a **constant-fitting parameter** that depends on the universal gas constant (R), the effective Henry's law constant for nitric acid in the aerosol aqueous phase (H_{NO_3}) and the ambient pressure (P_0). Depending on the value of pH, nitrate partitioning in

CMAQ can either be insensitive ($\frac{\partial \epsilon_{NO_3}}{\partial pH} \sim 0$) or sensitive ($\frac{\partial \epsilon_{NO_3}}{\partial pH} \sim 0.5$) to pH biases, depending on the month of the year considered (Figure 4). We generally find that nitrate partitioning is insensitive ($\frac{\partial \epsilon_{NO_3}}{\partial pH} \sim 0$) and heavily shifted to the gas phase ($\epsilon_{NO_3} \sim 0$) during the summer and spring (Figure 4), while it becomes quite sensitive to pH errors ($\frac{\partial \epsilon_{NO_3}}{\partial pH} \sim 0.5$) in the winter and fall. For the latter case, this means that small pH perturbations in either direction can strongly affect the amount of nitrate that partitions in the aerosol phase; if the weather is sufficiently cold and NO_x emissions and pH predictions are biased sufficiently high, $\epsilon_{NO_3} \sim 1$, meaning that all nitrates are partitioned to the aerosol phase and the emergence of “nitrate partitioningsubstitution” behavior.

To exemplify the above, we determine the amount of excess nitrate from pH prediction biases as follows. Perturbing the acidity by ΔpH from the monthly mean value along the ϵ_{NO_3} curves (Figure 4) gives the corresponding change in the partitioning ratio ($\Delta \epsilon_{NO_3}$). Multiplying $\Delta \epsilon_{NO_3}$ with the total nitrate ($HNO_{3(g)} + NO_3$) predicted in CMAQ in each grid cell gives the total nitrate response (ΔNO_3) to ΔpH . When applied to the Eastern US for $\Delta pH = +1$ (the average pH impact of including NVCs in the $PM_{2.5}$ calculations over the entire Eastern US) gives the ΔNO_3 distributions shown in Figure 5 for the winter (Figure 5a) and the summer (Figure 5b). The predicted wintertime nitrate bias tends to be higher than in the summer, owing to the lower temperatures and higher aerosol pH levels present (which shift ϵ_{NO_3} towards higher values; Figure 4) and the higher values of total available nitrate in the wintertime. The combination of both factors (available nitrate and high pH) is necessary for appreciable quantities of nitrate to partition, but in general the locations with a pH of between 0.5 and 1 are the most susceptible to positive pH biases, since a unit increase places nitrate partitioning into the ascending part of the S-curve (Figure 4), rapidly increasing the amount of aerosol nitrate that can form. During both seasons, areas rich in total nitrate, and a pH between 0.5 and 1.5, such as the Ohio River Valley, New York, New Jersey and South Louisiana (Figure 1, S1e, f), exhibit the largest increases in aerosol nitrate. Other locations that have low pH, and low total nitrate such as West Virginia see minimal changes. A notable exception is North Carolina which has a higher pH than the aforementioned locations - mainly due to the high NH_3 emissions from livestock - which pushes the partitioning beyond the sensitive regime, where increases in pH do not drive additional nitrate in the particle phase.

To investigate the potential of NVCs and sulfate reductions to induce nitrate substitution, the sensitivity of the nitrate increase ΔNO_3 , to the corresponding sulfate reduction ΔSO_4 , was

quantified for the Eastern US, both when NVCs are included in the calculations and when they were not (Figure 6). Over the decade, nitrate has seen increases in the Eastern US (Figure S11) ranging from 0.5 to 2.5 $\mu\text{g m}^{-3}$, and NVCs can have a profound impact on how these increases are distributed across the domain (Figure S11a, b). In the presence of NVCs (Figure 6a), there is a 1 $\mu\text{g m}^{-3}$ increase of nitrate for a sulfate reduction of the same value over the Eastern US. For this case, substitution is predicted across the entire Eastern US, with only a few gridcells in South Georgia, Mississippi and North Carolina exhibiting the opposite trend (nitrate reduction), attributed to the formation of insoluble CaSO_4 , which reduces the availability of aerosol water, and in turn inhibits the formation of NO_3 with the co-condensation of NH_3 . When NVCs are removed (Figure 6b), the corresponding nitrate increase is much less (0-0.2 $\mu\text{g m}^{-3}$ per 1 $\mu\text{g m}^{-3}$ of sulfate), especially in the Eastern US, while substitution is still predicted in the Northern parts of the domain such as Ohio, Indiana and Michigan. The aforementioned areas, tend to have higher seasonal pH values than the SE US (Figure 1), and the removal of NVCs reduces the pH to values where nitrate partitioning is more sensitive to small pH perturbations (Figure 4), leading to a higher predicted sensitivity to sulfate reductions. This analysis suggests that nitrate substitution is of a much smaller magnitude than expected (West et al. 1999, Heald et al. 2012, Bauer et al. 2007, Bellouin et al. 2011, Li et al. 2011, Goto et al. 2016, Vayenas et al. 2005, Karydis et al. 2016), and heavily impacted by pH biases introduced from NVCs.

Given the importance of aerosol acidity for almost any aerosol-related process and impact, it is imperative that aerosol studies evaluate acidity inferred from thermodynamic analysis of ambient data as presented here. We demonstrate that in the case of nitrate substitution, the distribution of nonvolatile cations over particle size can have a profound impact on model behavior, and requires better constraints from emissions to observations (or at least appropriate sensitivity studies, such as those carried out here, to unravel the potential impact of nonvolatile cations). Understanding aerosol pH and the drivers thereof, is a powerful tool for evaluating model performance that has never been used before. Usage of molar ratios, ion balances and other conceptual models of aerosol acidity (Hennigan et al. 2015, Wang et al. 2016, Silvern et al. 2017) provide limited insights in aerosol pH and should be strongly avoided to limit incorrect conclusions.

Acknowledgments

We acknowledge support from the Phillips 66 company, an EPA STAR grant, Georgia Power Faculty Scholar chair funds and the European Research Council Consolidator Grant 726165 – PyroTRACH. Authors declare no conflict of interest. This work was funded, in part, by U.S. Environmental Protection Agency under grant RD834799. Its contents are solely the responsibility of the grantee and do not necessarily represent the official views of the US EPA. Further, the US EPA does not endorse the purchase of any commercial products or services mentioned in the publication. Observational data were provided by Atmospheric Research Associates.

References

Air Pollutant Emissions Trends Data, <https://www.epa.gov/air-emissions-inventories/air-pollutant-emissions-trends-data>

Bauer, S. E., Koch, D., Unger, N., Metzger, S. M., Shindell, D. T., and Streets, D. G.: Nitrate aerosols today and in 2030: a global simulation including aerosols and tropospheric ozone, *Atmos. Chem. Phys.*, 7, 5043-5059, doi:10.5194/acp-7-5043-2007, 2007.

Bellouin, N., J. Rae, A. Jones, C. Johnson, J. Haywood, and O. Boucher (2011), Aerosol forcing in the Climate Model Intercomparison Project (CMIP5) simulations by HadGEM2-ES and the role of ammonium nitrate, *J. Geophys. Res.*, 116,D20206, doi:10.1029/2011JD016074

Blanchard, C.L., Hidy, G.M., Tanenbaum, S., Edgerton, E.S. and Hartsell, B.E. 2013a. The Southeastern Aerosol Research and Characterization (SEARCH) study: Temporal trends in gas and PM concentrations and composition, 1999-2010. *J. Air Waste Manage. Assoc.*, 63:247-259.

Blanchard, C.L., Hidy, G.M., Tanenbaum, S., Edgerton, E.S. and Hartsell, B.E. 2013b. The Southeastern Aerosol Research and Characterization (SEARCH) study: Spatial variations and chemical climatology, 1999-2010. *J. Air Waste Manage. Assoc.*, 63:260-275.

Bougiatioti, A., Nikolaou, P., Stavroulas, I., Kouvarakis, G., Weber, R., Nenes, A., Kanakidou, M., and Mihalopoulos, N.: Particle water and pH in the eastern Mediterranean: source variability and implications for nutrient availability, *Atmos. Chem. Phys.*, 16, 4579-4591, doi:10.5194/acp-16-4579-2016, 2016.

Byun, D. W., and K. L. Schere, 2006: Review of the governing equations, computational algorithms, and other components of the Models-3 Community Multiscale Air Quality (CMAQ) Modeling System. *Appl. Mech. Rev.*, 59, 51-77.

Clegg, S. L., Pitzer, K. S., and Brimblecombe, P., Thermodynamics of multicomponent, miscible, ionic solutions. II. Mixtures including unsymmetrical electrolytes. *J. Phys. Chem.* 96, 9470-9479, DOI: 10.1021/j100202a074, 1992

Eddingsaas, N.C, VanderVelde, D.G, and Wennberg, P.O Kinetics and Products of the Acid-Catalyzed Ring-Opening of Atmospherically Relevant Butyl Epoxy Alcohols, *The Journal of Physical Chemistry A* 2010 114 (31), 8106-8113, DOI: 10.1021/jp103907c

Fang, T., Guo, H., Zeng, L., Verma, V., Nenes, A., Weber, R.J. (2017) Highly acidic ambient particles, soluble metals and oxidative potential: A link between sulfate and aerosol toxicity, *Env.Sci.Tech.*, 51 (5), pp 2611–2620, doi:10.1021/acs.est.6b06151

Fisher, J.A., D.J. Jacob, Q. Wang, R. Bahreini, C.C. Carouge, M.J. Cubison, J.E. Dibb, T. Diehl, J.L. Jimenez, E.M. Leibensperger, Z. Lu, M.B.J. Meinders, H.O.T. Pye, P.K. Quinn, S. Sharma, D.G. Streets, A. van Donkelaar, and R.M. Yantosca. 2011. "Sources, distribution, and acidity of sulfate-ammonium aerosol in the Arctic in winter-spring." *Atmospheric Environment* 45: 7301-7318.

~~Foroutan, H., J. Young, S. Napelenok, L. Ran, K. W. Appel, R. C. Gilliam, and J. E. Pleim (2017), Development and evaluation of a physics-based windblown dust emission scheme implemented in the CMAQ modeling system, *J. Adv. Model. Earth Syst.*, 9, 585–608, doi:10.1002/2016MS000823.~~

Fountoukis, C. and Nenes, A. (2007) ISORROPIA II: A Computationally Efficient Aerosol Thermodynamic Equilibrium Model for K⁺, Ca²⁺, Mg²⁺, NH₄⁺, Na⁺, SO₄²⁻, NO₃⁻, Cl⁻, H₂O Aerosols, *Atmos.Chem.Phys.*, 7, 4639–4659

Friese, E. and Ebel, A., Temperature dependent thermodynamic model of the system H⁺ - NH₄⁺ - Na⁺ - SO₄²⁻ - NO₃⁻ - Cl⁻ - H₂O. *J. Phys. Chem. A*, 114, 11595-11631, DOI: 10.1021/jp101041j, 2010

G. Wang, R. Zhang, M. E. Gomez, L. Yang, M. Levy Zamora, M. Hu, Y. Lin, J. Peng, S. Guo, J. Meng, J. Li, C. Cheng, T. Hu, Y. Ren, Y. Wang, J. Gao, J. Cao, Z. An, W. Zhou, G. Li, J. Wang, P. Tian, W. Marrero-Ortiz, J. Secrest, Z. Du, J. Zheng, D. Shang, L. Zeng, M. Shao, W. Wang, Y. Huang, Y. Wang, Y. Zhu, Y. Li, J. Hu, B. Pan, L. Cai, Y. Cheng, Y. Ji, F. Zhang, D. Rosenfeld, P. S. Liss, R. A. Duce, C. E. Kolb, M. J. Molina, Persistent sulfate formation from London Fog to

Chinese haze. Proc. Natl. Acad. Sci. U.S.A. 113, 13630–13635, doi:10.1073/pnas.1616540113, 2016

Ghio, A. J., Carraway, M. S. & Madden, M. C. Composition of air pollution particles and oxidative stress in cells, tissues, and living systems. J. Toxicol. Environ. Health B 15, 1–21 (2012).

Goto, D., Ueda, K., Ng, C.F.S., Takami, A., Ariga, T., Matsuhashi, K., Nakajima, T., Estimation of excess mortality due to long-term exposure to PM_{2.5} in Japan using a high-resolution model for present and future scenarios. Atmospheric Environment 2016;140:320–332. doi:10.1016/j.atmosenv.2016.06.015

~~Guo, H., Liu, J., Ellis, R.A., Murphy, J.G., Froyd, K.D., Roberts, J.M., Veres, P.R., Hayes, P.L., Jimenez, J.L., Nenes, A., and Weber, R.J. (2017) Fine particle pH and gas-particle phase partitioning of inorganic species in Pasadena, California, during the 2010 CalNex campaign. Atmos.Chem.Phys., 17, 5703–5719~~

Guo, H., Liu, J., Froyd, K. D., Roberts, J. M., Veres, P. R., Hayes, P. L., Jimenez, J. L., Nenes, A., and Weber, R. J.: Fine particle pH and gas–particle phase partitioning of inorganic species in Pasadena, California, during the 2010 CalNex campaign, Atmos. Chem. Phys., 17, 5703–5719, doi:10.5194/acp-17-5703-2017, 2017.

Guo, H., Nenes, A., and Weber, R. J.: The underappreciated role of nonvolatile cations on aerosol ammonium-sulfate molar ratios, Atmos. Chem. Phys. Discuss., <https://doi.org/10.5194/acp-2017-737>, in review, 2017

Guo, H., Sullivan, A.P., Campuzano-Jost, P., Schroder, J.C., Lopez-Hilfiger, F.D., Dibb, J.E., Jimenez, J.L., Thornton, J.A, Brown, S.S., Nenes, A., and Weber, R.J. (2016) Fine particle pH and the partitioning of nitric acid during winter in the northeastern United States, J.Geoph.Res., 121, doi:10.1002/2016JD025311

Guo, H., Weber, R.J., Nenes, A. (2017a) The sensitivity of particle pH to NH₃: Can high NH₃ cause London Fog conditions?, Sci.Rep., 7, 12109, doi:10.1038/s41598-017-11704-0

Guo, H., Xu, L., Bougiatioti, A., Cerully, K. M., Capps, S. L., Hite Jr., J. R., Carlton, A. G., Lee, S.-H., Bergin, M. H., Ng, N. L., Nenes, A., and Weber, R. J.: Fine-particle water and pH in the southeastern United States, *Atmos. Chem. Phys.*, 15, 5211-5228, doi:10.5194/acp-15-5211-2015, 2015.

~~Hand, J. L., Schichtel, B. A., Malm, W. C. & Pitchford, M. L. Particulate sulfate ion concentration and SO₂ emission trends in the United States from the early 1990s through 2010. *Atmos. Chem. Phys.* 12, 10353–10365 (2012).~~

Hand, J. L., Schichtel, B. A., Malm, W. C., and Pitchford, M. L.: Particulate sulfate ion concentration and SO₂ emission trends in the United States from the early 1990s through 2010, *Atmos. Chem. Phys.*, 12, 10353-10365, doi:10.5194/acp-12-10353-2012, 2012.

Heald, C. L. et al. Atmospheric ammonia and particulate inorganic nitrogen over the United States. *Atmos. Chem. Phys.* 12, 10295–10312 (2012).

Henneman, L.R.F., Liu, C., Hu, Y., Mulholland, J.A., Russell, A.G. (2017), "Air quality modeling for accountability research: Operational, dynamic, and diagnostic evaluation.", *Atm.Env.*, 166, 551–565

Hennigan, C. J., Izumi, J., Sullivan, A. P., Weber, R. J., and Nenes, A.: A critical evaluation of proxy methods used to estimate the acidity of atmospheric particles, *Atmos. Chem. Phys.*, 15, 2775-2790, doi:10.5194/acp-15-2775-2015, 2015.

Karydis, V. A., Tsimpidi, A. P., Pozzer, A., Astitha, M., and Lelieveld, J.: Effects of mineral dust on global atmospheric nitrate concentrations, *Atmos. Chem. Phys.*, 16, 1491-1509, doi:10.5194/acp-16-1491-2016, 2016.

Kim, P. S., Jacob, D. J., Fisher, J. A., Travis, K., Yu, K., Zhu, L., Yantosca, R. M., Sulprizio, M. P., Jimenez, J. L., Campuzano-Jost, P., Froyd, K. D., Liao, J., Hair, J. W., Fenn, M. A., Butler, C. F., Wagner, N. L., Gordon, T. D., Welti, A., Wennberg, P. O., Crounse, J. D., St. Clair, J. M., Teng, A. P., Millet, D. B., Schwarz, J. P., Markovic, M. Z., and Perring, A. E.: Sources, seasonality, and trends of southeast US aerosol: an integrated analysis of surface, aircraft, and satellite

observations with the GEOS-Chem chemical transport model, *Atmos. Chem. Phys.*, 15, 10411-10433, doi:10.5194/acp-15-10411-2015, 2015.

Laskin, A., R. C. Moffet, M. K. Gilles, J. D. Fast, R. A. Zaveri, B. B. Wang, P. Nigge, and J. Shutthanandan (2012), Tropospheric chemistry of internally mixed sea salt and organic particles: Surprising reactivity of NaCl with weak organic acids, *Journal Of Geophysical Research-Atmospheres*, 117, D017743.

Liu, M., Song, Y., Zhou, T., Xu, Z., Yan, C., Zheng, M., Wu, Z., Hu, M., Wu, Y., and Zhu, T.: Fine particle pH during severe haze episodes in northern China, *Geophys. Res. Lett.*, 44, 5213-5221, doi:10.1002/2017GL073210, 2017

Li, J., W.-C. Wang, H. Liao, and W. Chang. 2014. Past and future direct radiative forcing of nitrate aerosol in East Asia. *Theor. Appl. Climatol.* 1–14. doi:10.1007/s00704-014-1249-1

Liu, Y., Wu Z., Wang, Y., Xiao, Y., Gu, F., Zheng, J., Tan, T., Shang, D., Wu, Y., Zeng, L., Hu, M., Bateman, A. P., and Martin, S.T., Submicrometer Particles Are in the Liquid State during Heavy Haze Episodes in the Urban Atmosphere of Beijing, China, *Environmental Science & Technology Letters Article ASAP*, DOI: 10.1021/acs.estlett.7b00352, 2017

Meskhidze, N., Chameides, W. L., Nenes, A. & Chen, G. Iron mobilization in mineral dust: can anthropogenic SO₂ emissions affect ocean productivity? *Geophys. Res. Lett.* 30, 2085 (2003).

Park, R. J., Jacob, D. J., Kumar, N. and Yantosca, R. N.. 2006. Regional visibility statistics in the United States: Natural and transboundary pollution influences, and implications for the regional haze rule. *Atmospheric Environment* 40(28): 5405-5423, doi.org/10.1016/j.atmosenv.2006.04.059

Pinder, R. W., Adams, P. J. & Pandis, S. N. Ammonia emission controls as a cost-effective strategy for reducing atmospheric particulate matter in the eastern United States. *Environ. Sci. Technol.* 41, 380–386 (2007).

Pinder, R. W., Gilliland, A. B. & Dennis, R. L. Environmental impact of atmospheric NH₃ emissions under present and future conditions in the eastern United States. *Geophys. Res. Lett.* 35, L12808 (2008).

Pye, H. O. T., H. Liao, S. Wu, L. J. Mickley, D. J. Jacob, D. K. Henze, and J. H. Seinfeld (2009), Effect of changes in climate and emissions on future sulfate-nitrate-ammonium aerosol levels in the United States, *J. Geophys. Res.*, 114, D01205, doi:10.1029/2008JD010701.

Pye, H. O. T., Zuend, A., Fry, J. L., Isaacman-VanWertz, G., Capps, S. L., Appel, K. W., Foroutan, H., Xu, L., Ng, N. L., and Goldstein, A. H.: Coupling of organic and inorganic aerosol systems and the effect on gas-particle partitioning in the southeastern US, *Atmos. Chem. Phys.*, 18, 357-370, <https://doi.org/10.5194/acp-18-357-2018>, 2018.

Pye, H. O. T.; Pinder, R. W.; Piletic, I. R.; Xie, Y.; Capps, S. L.; Lin, Y.-H.^S; Surratt, J. D.; Zhang, Z.; Gold, A.; Luecken, D. J.; Hutzell, W. T.; Jaoui, M.; Offenberg, J. H.; Kleindienst, T. E.; Lewandowski, M.; Edney, E. O. (2013) Epoxide Pathways Improve Model Predictions of Isoprene Markers and Reveal Key Role of Acidity in Aerosol Formation. *Environmental Science & Technology*, 47 (19), 11056–11064.

~~Saylor, R., Myles, L., Sibble, D., Caldwell, J. & Xing, J. Recent trends in gas-phase ammonia and PM_{2.5} ammonium in the southeast United States. *J. Air Waste Manage. Assoc.* 65, 347–357 (2015).~~

Saylor, R., Myles, L., Sibble, D., Caldwell, J. & Xing, J. Recent trends in gas-phase ammonia and PM_{2.5} ammonium in the southeast United States. *J. Air Waste Manage. Assoc.* 65, 347–357, doi: 10.1080/10962247.2014.992554, 2015

Silvern, R. F., Jacob, D. J., Kim, P. S., Marais, E. A., Turner, J. R., Campuzano-Jost, P., and Jimenez, J. L.: Inconsistency of ammonium-sulfate aerosol ratios with thermodynamic models in the eastern US: a possible role of organic aerosol, *Atmos. Chem. Phys.*, 17, 5107-5118, doi:10.5194/acp-17-5107-2017, 2017.

Song, S., Gao, M., Xu, W., Shao, J., Shi, G., Wang, S., Wang, Y., Sun, Y., and McElroy, M. B.: Fine particle pH for Beijing winter haze as inferred from different thermodynamic equilibrium models, *Atmos. Chem. Phys. Discuss.*, <https://doi.org/10.5194/acp-2018-6>, in review, 2018.

Surratt, J. D., Chan, A. W. H., Eddingsaas, N. C., Chan, M., Loza, C. L., Kwan, A. J., ... Seinfeld, J. H. (2010). Reactive intermediates revealed in secondary organic aerosol formation from isoprene. *Proceedings of the National Academy of Sciences of the United States of America*, 107(15), 6640–6645. <http://doi.org/10.1073/pnas.091114107>

Tsimpidi, A. P., Karydis, V. A. & Pandis, S. N. Response of inorganic fine particulate matter to emission changes of sulfur dioxide and ammonia: the eastern United States as a case study. *J. Air Waste Manage. Assoc.* 57, 1489–1498 (2007).

Vayenas, D. V., S. Takahama, C. I. Davidson, and S. N. Pandis (2005), Simulation of the thermodynamics and removal processes in the sulfate-ammonia-nitric acid system during winter: Implications for PM_{2.5} control strategies, *J. Geophys. Res.*, 110, D07S14, doi:10.1029/2004JD005038.

Weber, R.J., Guo, H., Russell, A.G., Nenes, A. (2016) High aerosol acidity despite declining atmospheric sulfate concentrations over the past 15 years, *Nature Geosci.*, doi:10.1038/ngeo2665

Weijun Li, Liang Xu, Xiaohuan Liu, Jianchao Zhang, Yangting Lin, Xiaohong Yao, Huiwang Gao, Daizhou Zhang, Jianmin Chen, Wenxing Wang, Roy M. Harrison, Xiaoye Zhang, Longyi Shao, Pingqing Fu, Athanasios Nenes, Zongbo Shi. Air pollution–aerosol interactions produce more bioavailable iron for ocean ecosystems. *Science Advances*, 2017; 3 (3): e1601749 DOI: 10.1126/sciadv.1601749

West, J. J., Ansari, A. S. & Pandis, S. N. Marginal PM_{2.5}: nonlinear aerosol mass response to sulfate reductions in the eastern United States. *J. Air Waste Manage. Assoc.* 49, 1415–1424 (1999).

Wexler, A. S., and S. L. Clegg, Atmospheric aerosol models for systems including the ions H⁺, NH₄⁺, Na⁺, SO₄²⁻, NO₃⁻, Cl⁻, Br⁻, and H₂O, *J. Geophys. Res.*, 107(D14), DOI: 10.1029/2001JD000451, 2002, <http://www.aim.env.uea.ac.uk/aim/aim.php>

Xu, L.; Guo, H.; Boyd, C.; Klein, M.; Bougiatioti, A.; Cerully, K.; Hite, J.; Isaacman-VanWertz, G.; Kreisberg, N. M.; Knote, C.; Olson, K.; Koss, A.; Goldstein, A.; Hering, S. V.; de Gouw, J.; Baumann, K.; Lee, S. H.; Nenes, A.; Weber, R. J.; Ng, N. L. Effects of anthropogenic emissions on aerosol formation from isoprene and monoterpenes in the southeastern United States. *Proc. Natl. Acad. Sci. U. S. A.* 2014, 112 (1), 37–42.

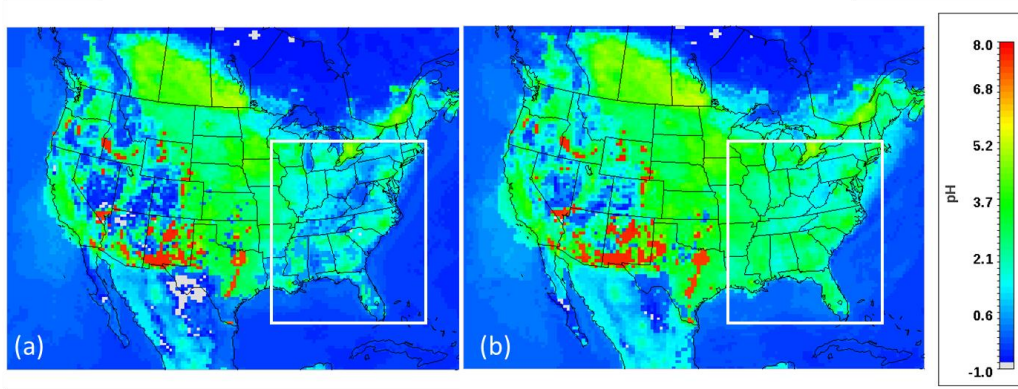


Figure 1 - Annual averaged PM_{2.5} pH over CONUS for (a) 2001 and (b) 2011, calculated offline using ISORROPIA, using the annual averaged CMAQ concentration fields. The white outline specifies the Eastern US domain used for further analysis.

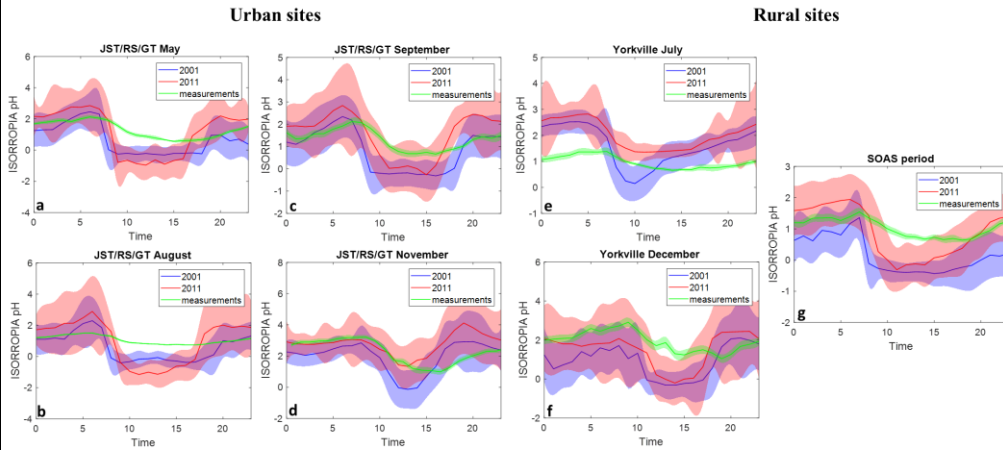


Figure 2 - pH diurnal profiles for May (a), August (b), September (c) and November (d) at JST/RS/GT, July (e) and December (f) at YRK and for the SOAS campaign period (g). Blue and red lines are the offline ISORROPIA predicted/simulated pH using CMAQ predicted pH concentrations for 2001 and 2011 respectively, while the shaded areas are one model standard deviation. The green line represents the pH calculated through the thermodynamic analysis of the measurements (found in Guo et al., 2015) and the shaded area is standard standard error

Formatted: Normal, Left, Indent: Left: 0", First line: 0", Space After: 10 pt, Line spacing: Multiple 1.15 li, Don't keep with next

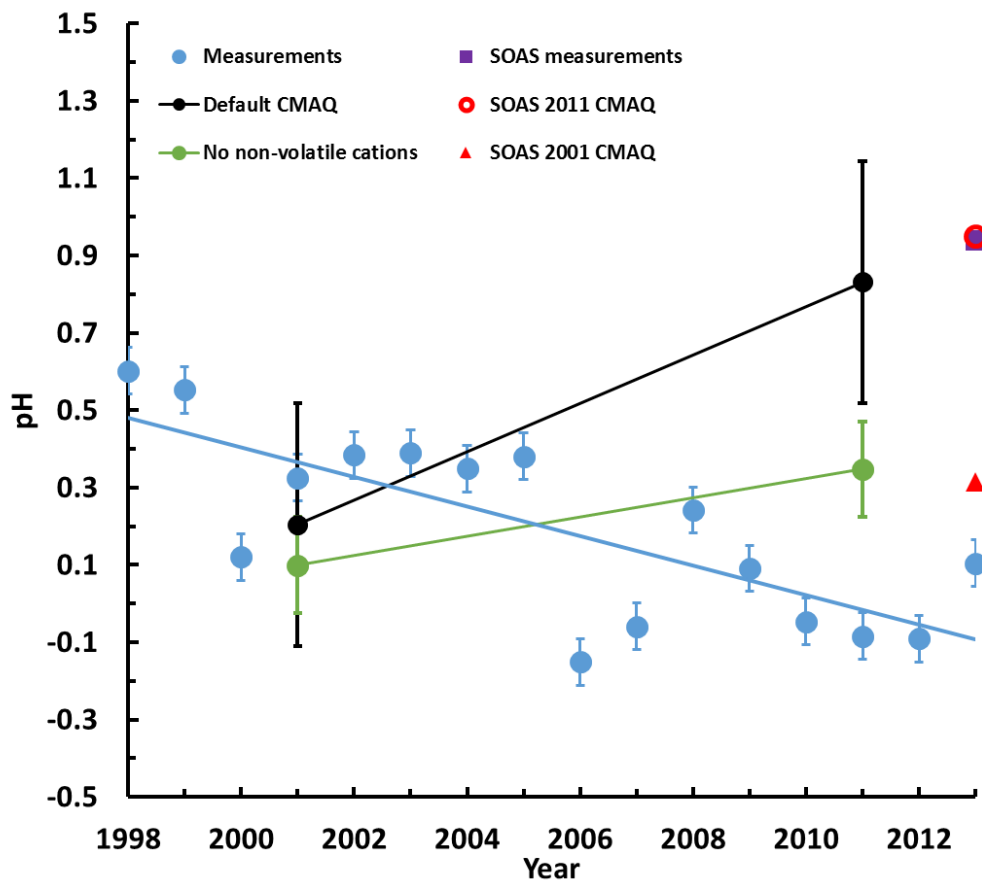


Figure 3 – Decadal pH trends from the thermodynamic analysis of the measurements from Weber et al. 2016 (blue line), default CMAQ (black line) and CMAQ results [at the Centreville gridcell](#) without crustal elements (green line). Also shown, is the pH for the SOAS campaign, and for the CMAQ predicted pH for June 1st-July 15th 2001 and 2011. CMAQ exhibits a clear positive trend, with pH increasing throughout the decade, both due to sulfate reductions and the increasingly important role of NVCs. Standard error is also plotted for all data points.

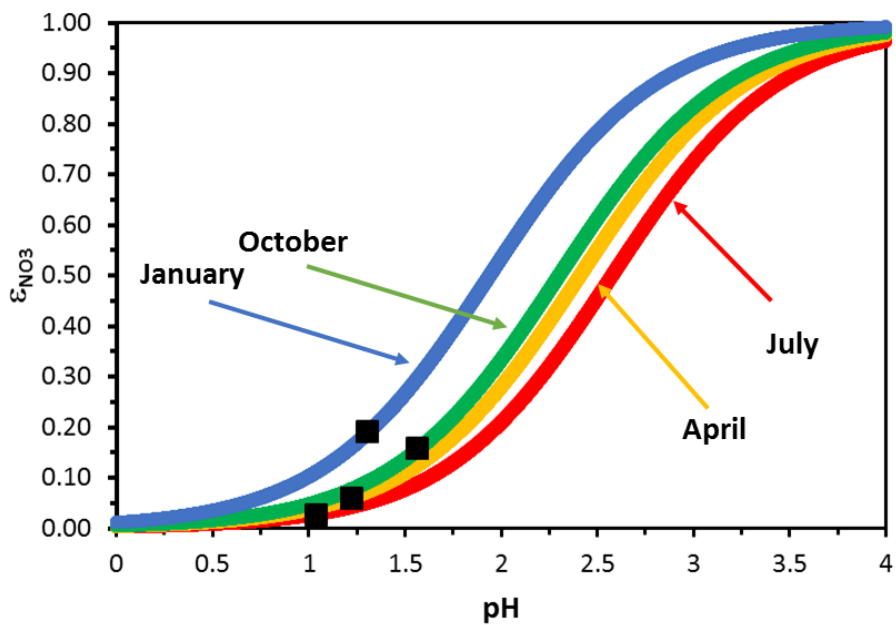


Figure 4 - CMAQ-derived nitrate partitioning ratio for the E.U.S and select months of 2001. The black squares denote the average pH values for each month. Note the insensitivity of nitrate partitioning to pH biases in the summer for pH values of less than 1 ($\frac{\partial \epsilon_{NO_3}}{\partial pH} \sim 0$), which is not the case for colder months.

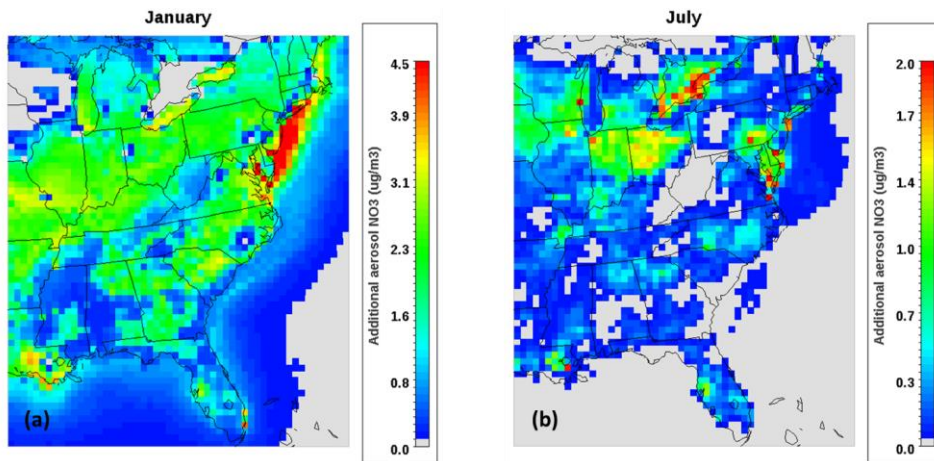


Figure 5 - Increase in aerosol nitrate corresponding to a one-unit positive change in pH for a) winter-January and b) summer-July. Emissions for 2011 are assumed, but to account for pH prediction biases from NVCs, they are removed from the thermodynamic calculations. Plots are on different scales due to the large differences in predicted nitrate increases.

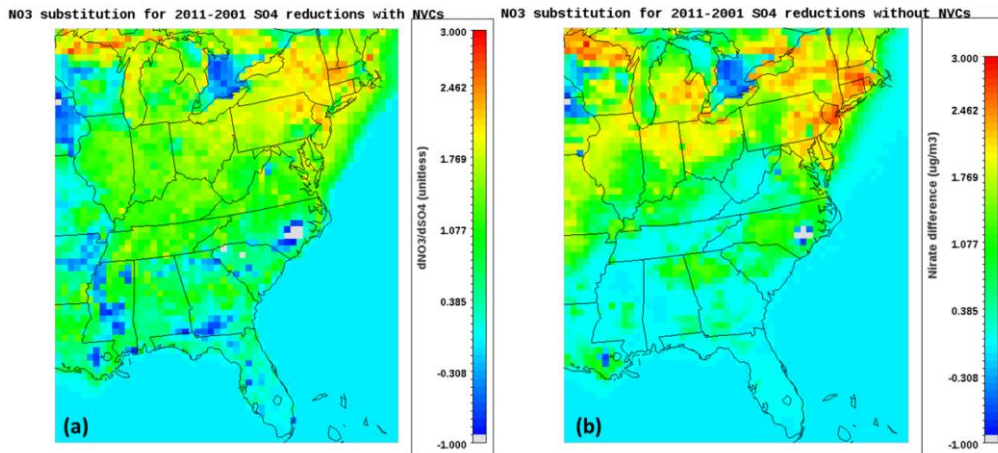


Figure 6 – CMAQ predicted nitrate substitution $\left(\frac{NO_3^{2011}-NO_3^{2001}}{SO_4^{2001}-SO_4^{2011}}\right)$ over the decade, when NVCs are accounted for (a), and when they are removed from the thermodynamic calculations (b).