

Impact of stratospheric atomic chlorine on the modelling of total methane and its isotopic ratios at global scale - Supplementary Information

Joël Thanwerdas^{1,*}, Marielle Saunois¹, Antoine Berchet¹, Isabelle Pison¹, Didier Hauglustaine¹, Michel Ramonet¹, Cyril Crevoisier², Bianca Baier^{3,4}, Colm Sweeney⁴, and Philippe Bousquet¹

¹Laboratoire des Sciences du Climat et de l'Environnement, CEA-CNRS-UVSQ, IPSL, Gif-sur-Yvette, France.

²Laboratoire de Météorologie Dynamique, École Polytechnique, IPSL, Palaiseau, France.

³Cooperative Institute for Research in Environmental Sciences (CIRES), University of Colorado-Boulder, Boulder, CO 80305

⁴NOAA Earth System Research Laboratory Global Monitoring Division, Boulder, CO, USA 80305

Correspondence: J. Thanwerdas (joel.thanwerdas@lscce.ipsl.fr)

The supplementary information contains details on the literature used to assess the source isotopic signatures associated to the different sectors, on the sector source intensities used in the model, on the AirCore profiles and regions used to infer regional $\delta^{13}\text{C}$ isotopic signature values for wetlands, gas and biomass burning. The methane global emissions time-series for the 2000-2018 period are plotted in Figure S2. The individual AirCore vertical profiles plots with the associated simulated profiles are shown in Figure S3. Regional isotopic signature values for three sectors are given in Table S5. Regions are plotted in Figure S4.

1 Text S1

Data from literature have been compiled to assess a global isotopic signature for the multiple sectors (regional for three of them) used in the paper. These references are given here.

10 1.1 Wetlands

After reviewing literature on isotopic methane signatures from sources in North America (Alstad and Whiticar, 2011; Burke et al., 1988; Chasar et al., 2000; Happell et al., 1995, 1994; Hornibrook et al., 1997, 2000; Martens et al., 1992; Popp et al., 1999; Santoni et al., 2012), South America (Chanton et al., 1989; Devol et al., 1996; Holmes et al., 2015; Smith et al., 2000; Tyler et al., 1987), Africa (Tyler et al., 1988), Europe (Bowes and Hornibrook, 2006; Galand et al., 2010; Sriskantharajah et al., 2012; Woltemate et al., 1984) and Asia (Itoh et al., 2008; Nakagawa et al., 2002; Sugimoto and Fujita, 2006), the following regional values were decided: a global base $\delta^{13}\text{C}$ value of -60‰ , -65‰ in boreal regions, -60‰ in temperate regions, and -55‰ in tropical regions. In Africa, -50‰ was used, following (Tyler et al., 1988).

1.2 Termites

A wide range of $\delta^{13}\text{C}$ signatures have been reported in the literature, from -93.8 ‰ to -54 ‰ (Bréas et al., 2001). For these simulations, $\delta^{13}\text{C}$ was taken to be -63 ‰

1.3 Oceanic fluxes

- 5 Surface $\delta^{13}\text{C}$ values from various oceans in the world were found in a small range: roughly -44 ‰ to -40 ‰ (Brunskill et al., 2011; Holmes et al., 2000; Sansone et al., 2001). A value of -42 ‰ was used.

1.4 Geological fluxes

- No literature have been found. A value of -50 ‰ was used (personal communication with Philippe Bousquet). Geological sources contribute only a small fraction of the total methane sources so uncertainties on this value do not largely affect final
10 results.

1.5 Livestock

- Livestock is a large sector and includes two different source categories : enteric fermentation ($\sim 90\%$ of the livestock sector total methane sources) and manure management ($\sim 10\%$). Values of -62 ‰ for entering fermentation and -52 ‰ for manure management were taken (Levin et al., 1993; Klevenhusen et al., 2010; Bilek et al., 2001), resulting in a flux- and area-weighted
15 value of -61 ‰

1.6 Rice cultivation

Bréas et al. (2001) cited literature $\delta^{13}\text{C}$ values from rice paddies, ranging from -68 ‰ to -48 ‰ . For this work, -63 ‰ was used (Bousquet et al., 2006).

1.7 Oil, Gas, Industry (OGI)

- 20 OGI encompasses five very different source categories : gas ($\sim 68\%$), oil ($\sim 28\%$), industrial processes ($\sim 1\%$), road transportation ($\sim 2\%$) and non-road transportation ($\sim 1\%$). Regional values for gas from -50 ‰ to -36.8 ‰ (see Table S5) (Levin et al., 1999; Lowry et al., 2001; Zazzeri et al., 2015; Phillips et al., 2013; Aali et al., 2006), -40 ‰ for oil (Monteil et al., 2011), -52.6 ‰ for industrial processes (overall signature), -20 ‰ for road transportation and also for non-road transportation (Levin et al., 1999; Nakagawa et al., 2005; Chanton et al., 2000) were taken, resulting in a flux- and area-weighted value of
25 -39.7 ‰

1.8 Biofuels and Biomass

Biofuels and Biomass sector encompasses four very different source categories : biomass burning ($\sim 35 \%$), biofuel burning ($\sim 40 \%$), energy use ($\sim 20 \%$) and fossil fuel fires ($\sim 5 \%$). Regional values for biomass burning from -26.5‰ to -15.46‰ (see Table S5), -20‰ for biofuel burning (Chanton et al., 2000), -30‰ for energy use and -30‰ for fossil fuel fires were
5 taken, resulting in a flux- and area-weighted value of -25.8‰

1.9 Waste

Waste sector encompasses three different source categories : waste water ($\sim 49 \%$), solid waste ($\sim 49 \%$), agriculture waste burning and ($\sim 2 \%$). Values of -48‰ for waste water, -52‰ for solid waste and -23.6‰ for agriculture waste burning (Levin et al., 1993; Yamada et al., 2006; Townsend-Small et al., 2012; Bergamaschi et al., 1998; Chanton et al., 1999) were taken,
10 resulting in a flux- and area-weighted value of -49.7‰

1.10 Coal

For coal emissions in mines, a $\delta^{13}\text{C}$ value of -35‰ was used, as in Monteil et al. (2011).

2 Figure S2

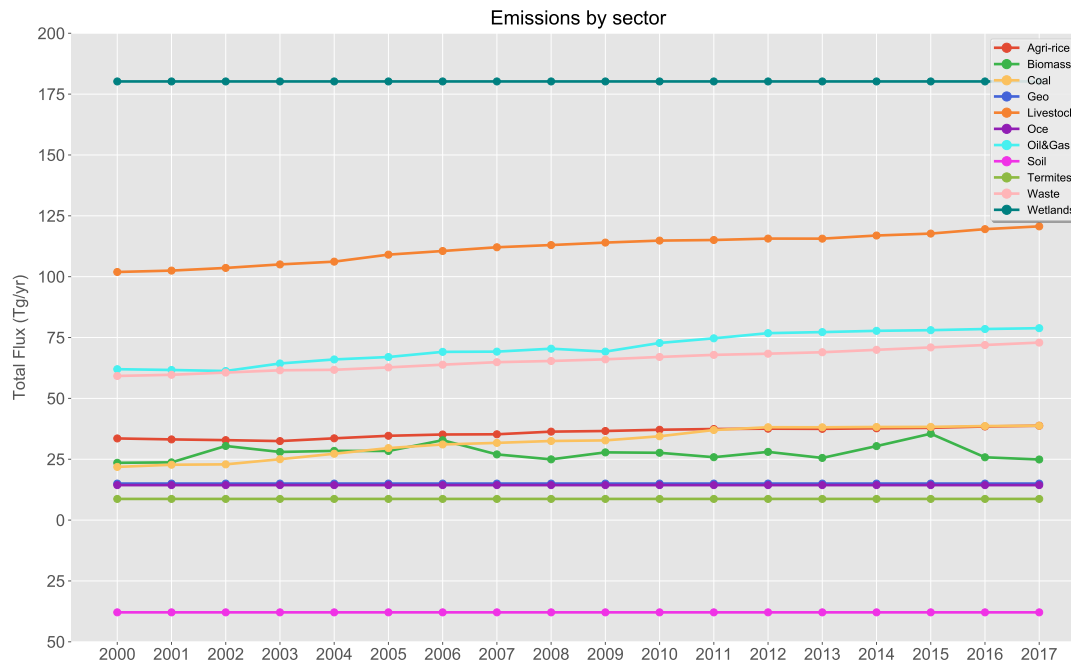


Figure S2. Sector emissions for the 2000-2017 period in Tg/yr. The 2018 emissions are set equal to 2017.

3 Figure S3

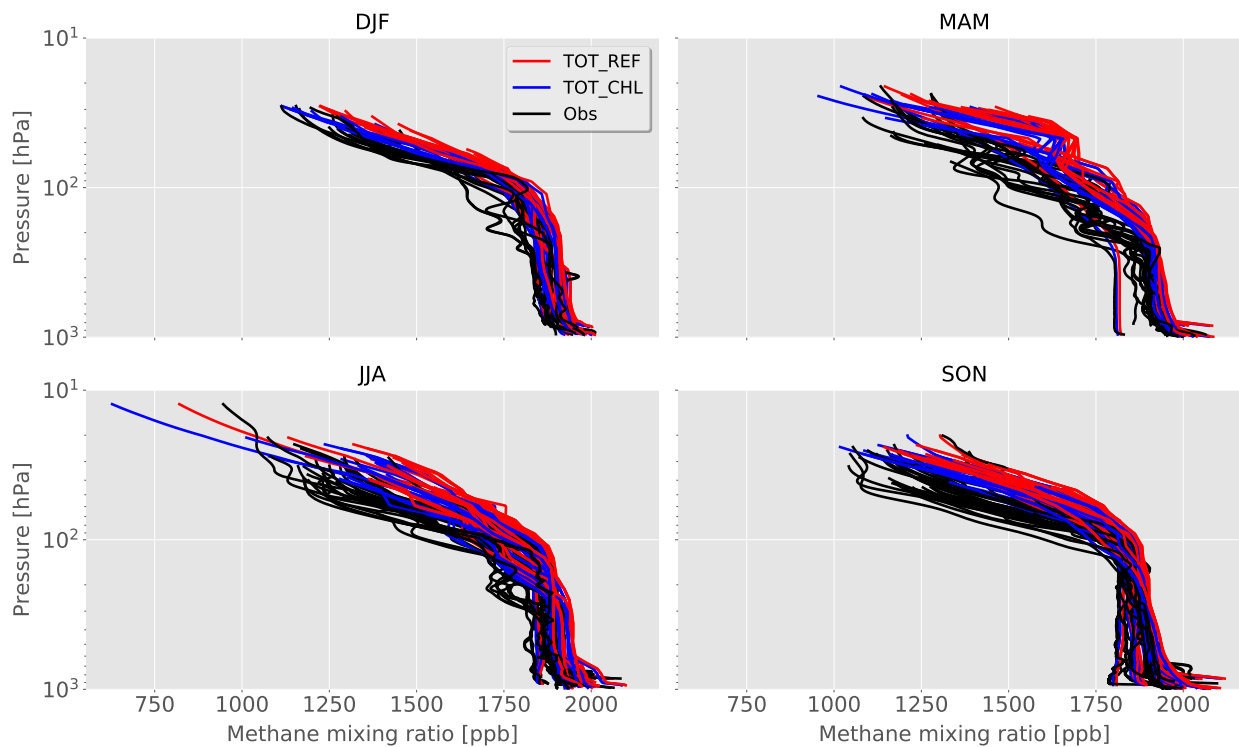


Figure S3. Methane vertical profiles for each season. Simulated profiles from TOT_REF and TOT_CHL are indicated by red and blue lines, respectively. The dark lines are the raw data retrieved using AirCore technique.

4 Figure S4

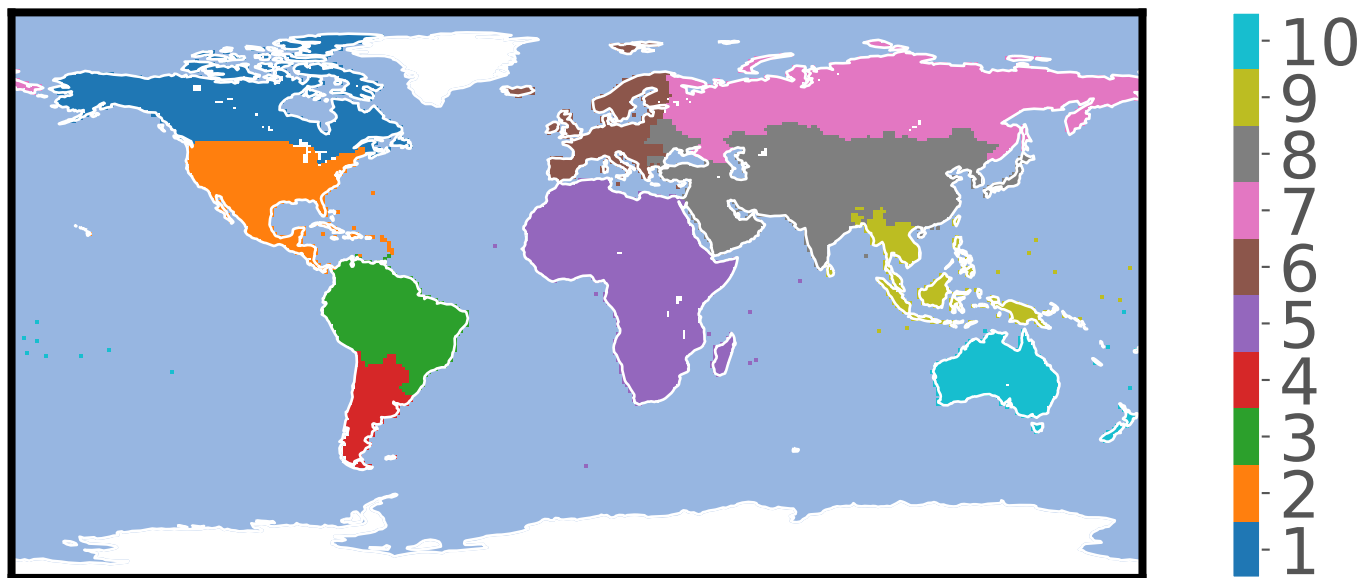


Figure S4. Regions used to infer regional $\delta^{13}\text{C}$ isotopic signature values for wetlands, gas and biomass burning.

5 Table S5

Region	Wetlands	Gas	Biomass burning
Global default	-60.0 ‰	-40.0 ‰	-26.5 ‰
Boreal North America	-65.0 ‰	-36.8 ‰	-26.5 ‰
Temperate North America	-60.0 ‰	-36.8 ‰	-26.5 ‰
Tropical South America	-55.0 ‰	-40.0 ‰	-18.15 ‰
Temperate South America	-60.0 ‰	-40.0 ‰	-19.53 ‰
Africa	-50.0 ‰	-40.0 ‰	-15.46 ‰
Europe	-60.0 ‰	-44.0 ‰	-26.5 ‰
Boreal Asia	-65.0 ‰	-50.0 ‰	-26.82 ‰
Temperate Asia	-60.0 ‰	-40.0 ‰	-19.16 ‰
Southeast Asia	-55.0 ‰	-40.0 ‰	-20.65 ‰
Australia	-60.0 ‰	-40.0 ‰	-26.5 ‰

Table S5. Regional $\delta^{13}\text{C}$ isotopic signature values for wetlands, gas and biomass burning.

References

- Aali, J., Rahimpour-Bonab, H., and Kamali, M. R.: Geochemistry and origin of the world's largest gas field from Persian Gulf, Iran, *Journal of Petroleum Science and Engineering*, 50, 161–175, <https://doi.org/10.1016/j.petrol.2005.12.004>, <http://www.sciencedirect.com/science/article/pii/S0920410505002160>, 2006.
- 5 Alstad, K. P. and Whiticar, M. J.: Carbon and hydrogen isotope ratio characterization of methane dynamics for Fluxnet Peatland Ecosystems, *Organic Geochemistry*, 42, 548–558, <https://doi.org/10.1016/j.orggeochem.2011.03.004>, <http://www.sciencedirect.com/science/article/pii/S0146638011000581>, 2011.
- Bergamaschi, P., Lubina, C., Königstedt, R., Fischer, H., Veltkamp, A. C., and Zwaagstra, O.: Stable isotopic signatures (^{13}C , D) of methane from European landfill sites, *Journal of Geophysical Research: Atmospheres*, 103, 8251–8265, <https://doi.org/10.1029/98JD00105>, <https://agupubs.onlinelibrary.wiley.com/doi/abs/10.1029/98JD00105>, 1998.
- 10 Bilek, R. S., Tyler, S. C., Kurihara, M., and Yagi, K.: Investigation of cattle methane production and emission over a 24-hour period using measurements of ^{13}C and D of emitted CH_4 and rumen water, *Journal of Geophysical Research: Atmospheres*, 106, 15 405–15 413, <https://doi.org/10.1029/2001JD900177>, <http://agupubs.onlinelibrary.wiley.com/doi/abs/10.1029/2001JD900177>, 2001.
- Bousquet, P., Ciais, P., Miller, J. B., Dlugokencky, E. J., Hauglustaine, D. A., Prigent, C., Van der Werf, G. R., Peylin, P., Brunke, E.-G.,
15 Carouge, C., Langenfelds, R. L., Lathière, J., Papa, F., Ramonet, M., Schmidt, M., Steele, L. P., Tyler, S. C., and White, J.: Contribution of anthropogenic and natural sources to atmospheric methane variability, *Nature*, 443, 439–443, <https://doi.org/10.1038/nature05132>, <http://www.nature.com/articles/nature05132>, 2006.
- Bowes, H. L. and Hornibrook, E. R. C.: Emission of highly ^{13}C -depleted methane from an upland blanket mire, *Geophysical Research Letters*, 33, L04 401, <https://doi.org/10.1029/2005GL025209>, <http://doi.wiley.com/10.1029/2005GL025209>, 2006.
- 20 Brunskill, G. J., Burns, K. A., and Zagorskis, I.: Natural flux of greenhouse methane from the Timor Sea to the atmosphere, *Journal of Geophysical Research: Biogeosciences*, 116, <https://doi.org/10.1029/2010JG001444>, <http://agupubs.onlinelibrary.wiley.com/doi/abs/10.1029/2010JG001444>, 2011.
- Bréas, O., Guillou, C., Reniero, F., and Wada, E.: The Global Methane Cycle: Isotopes and Mixing Ratios, Sources and Sinks, *Isotopes in Environmental and Health Studies*, 37, 257–379, <https://doi.org/10.1080/10256010108033302>, <https://doi.org/10.1080/10256010108033302>,
25 2001.
- Burke, R. A., Barber, T. R., and Sackett, W. M.: Methane flux and stable hydrogen and carbon isotope composition of sedimentary methane from the Florida Everglades, *Global Biogeochemical Cycles*, 2, 329–340, <https://doi.org/10.1029/GB002i004p00329>, <http://agupubs.onlinelibrary.wiley.com/doi/abs/10.1029/GB002i004p00329>, 1988.
- Chanton, J., Crill, P., Bartlett, K., and Martens, C.: Amazon Capims (floating grassmats): A source of ^{13}C enriched methane to the tropo-
30 sphere, *Geophysical Research Letters*, 16, 799–802, <https://doi.org/10.1029/GL016i008p00799>, <http://agupubs.onlinelibrary.wiley.com/doi/abs/10.1029/GL016i008p00799>, 1989.
- Chanton, J. P., Rutkowski, C. M., and Mosher, B.: Quantifying Methane Oxidation from Landfills Using Stable Isotope Analysis of Downwind Plumes, *Environmental Science & Technology*, 33, 3755–3760, <https://doi.org/10.1021/es9904033>, <https://pubs.acs.org/doi/10.1021/es9904033>, 1999.
- 35 Chanton, J. P., Rutkowski, C. M., Schwartz, C. C., Ward, D. E., and Boring, L.: Factors influencing the stable carbon isotopic signature of methane from combustion and biomass burning, *Journal of Geophysical Research: Atmospheres*, 105, 1867–1877, <https://doi.org/10.1029/1999JD900909>, <http://agupubs.onlinelibrary.wiley.com/doi/abs/10.1029/1999JD900909>, 2000.

- Chasar, L. S., Chanton, J. P., Glaser, P. H., and Siegel, D. I.: Methane Concentration and Stable Isotope Distribution as Evidence of Rhizospheric Processes: Comparison of a Fen and Bog in the Glacial Lake Agassiz Peatland Complex, *Annals of Botany*, 86, 655–663, <https://doi.org/10.1006/anbo.2000.1172>, <https://academic.oup.com/aob/article/86/3/655/2588357>, 2000.
- 5 Devol, A. H., Richey, J. E., King, S. L., Lansdown, J., and Martinelli, L. A.: Seasonal variations in the ^{13}C - CH_4 of Amazon floodplain waters, *SIL Communications*, 1953-1996, 25, 173–178, <https://doi.org/10.1080/05384680.1996.11904078>, <https://www.tandfonline.com/doi/full/10.1080/05384680.1996.11904078>, 1996.
- Galand, P. E., Yrjälä, K., and Conrad, R.: Stable carbon isotope fractionation during methanogenesis in three boreal peatland ecosystems, *Biogeosciences*, 7, 3893–3900, <https://doi.org/10.5194/bg-7-3893-2010>, <http://www.biogeosciences.net/7/3893/2010/>, 2010.
- Happell, J. D., Chanton, J. P., and Showers, W. S.: The influence of methane oxidation on the stable isotopic composition of methane emitted from Florida swamp forests, *Geochimica et Cosmochimica Acta*, 58, 4377–4388, [https://doi.org/10.1016/0016-7037\(94\)90341-7](https://doi.org/10.1016/0016-7037(94)90341-7), <http://www.sciencedirect.com/science/article/pii/0016703794903417>, 1994.
- 10 Happell, J. D., Chanton, J. P., and Showers, W. J.: Methane transfer across the water-air interface in stagnant wooded swamps of Florida: Evaluation of mass-transfer coefficients and isotropic fractionation, *Limnology and Oceanography*, 40, 290–298, <https://doi.org/10.4319/lo.1995.40.2.0290>, <https://aspubs.onlinelibrary.wiley.com/doi/abs/10.4319/lo.1995.40.2.0290>, 1995.
- 15 Holmes, M. E., Sansone, F. J., Rust, T. M., and Popp, B. N.: Methane production, consumption, and air-sea exchange in the open ocean: An Evaluation based on carbon isotopic ratios, *Global Biogeochemical Cycles*, 14, 1–10, <https://doi.org/10.1029/1999GB001209>, <http://agupubs.onlinelibrary.wiley.com/doi/abs/10.1029/1999GB001209>, 2000.
- Holmes, M. E., Chanton, J. P., Tfaily, M. M., and Ogram, A.: CO_2 and CH_4 isotope compositions and production pathways in a tropical peatland, *Global Biogeochemical Cycles*, 29, 1–18, <https://doi.org/10.1002/2014GB004951>, <https://agupubs.onlinelibrary.wiley.com/doi/abs/10.1002/2014GB004951>, 2015.
- 20 Hornibrook, E. R. C., Longstaffe, F. J., and Fyfe, W. S.: Spatial distribution of microbial methane production pathways in temperate zone wetland soils: Stable carbon and hydrogen isotope evidence, *Geochimica et Cosmochimica Acta*, 61, 745–753, [https://doi.org/10.1016/S0016-7037\(96\)00368-7](https://doi.org/10.1016/S0016-7037(96)00368-7), <http://www.sciencedirect.com/science/article/pii/S0016703796003687>, 1997.
- Hornibrook, E. R. C., Longstaffe, F. J., and Fyfe, W. S.: Evolution of stable carbon isotope compositions for methane and carbon dioxide in freshwater wetlands and other anaerobic environments, *Geochimica et Cosmochimica Acta*, 64, 1013–1027, [https://doi.org/10.1016/S0016-7037\(99\)00321-X](https://doi.org/10.1016/S0016-7037(99)00321-X), <http://www.sciencedirect.com/science/article/pii/S001670379900321X>, 2000.
- 25 Itoh, M., Ohte, N., Koba, K., Sugimoto, A., and Tani, M.: Analysis of methane production pathways in a riparian wetland of a temperate forest catchment, using ^{13}C of pore water CH_4 and CO_2 , *Journal of Geophysical Research: Biogeosciences*, 113, <https://doi.org/10.1029/2007JG000647>, <https://agupubs.onlinelibrary.wiley.com/doi/abs/10.1029/2007JG000647>, 2008.
- 30 Klevenhusen, F., Bernasconi, S. M., Kreuzer, M., and Soliva, C. R.: Experimental validation of the Intergovernmental Panel on Climate Change default values for ruminant-derived methane and its carbon-isotope signature, *Animal Production Science*, 50, 159, <https://doi.org/10.1071/AN09112>, <http://www.publish.csiro.au/?paper=AN09112>, 2010.
- Levin, I., Bergamaschi, P., Dörr, H., and Trapp, D.: Stable isotopic signature of methane from major sources in Germany, *Chemosphere*, 26, 161–177, [https://doi.org/10.1016/0045-6535\(93\)90419-6](https://doi.org/10.1016/0045-6535(93)90419-6), <http://www.sciencedirect.com/science/article/pii/0045653593904196>, 1993.
- 35 Levin, I., Glatzel-Mattheier, H., Marik, T., Cuntz, M., Schmidt, M., and Worthy, D. E.: Verification of German methane emission inventories and their recent changes based on atmospheric observations, *Journal of Geophysical Research: Atmospheres*, 104, 3447–3456, <https://doi.org/10.1029/1998JD100064>, <https://agupubs.onlinelibrary.wiley.com/doi/abs/10.1029/1998JD100064>, 1999.

- Lowry, D., Holmes, C. W., Rata, N. D., O'Brien, P., and Nisbet, E. G.: London methane emissions: Use of diurnal changes in concentration and ^{13}C to identify urban sources and verify inventories, *Journal of Geophysical Research: Atmospheres*, 106, 7427–7448, <https://doi.org/10.1029/2000JD900601>, <http://agupubs.onlinelibrary.wiley.com/doi/abs/10.1029/2000JD900601>, 2001.
- Martens, C. S., Kelley, C. A., Chanton, J. P., and Showers, W. J.: Carbon and hydrogen isotopic characterization of methane from wetlands and lakes of the Yukon-Kuskokwim delta, western Alaska, *Journal of Geophysical Research: Atmospheres*, 97, 16 689–16 701, <https://doi.org/10.1029/91JD02885>, <http://agupubs.onlinelibrary.wiley.com/doi/abs/10.1029/91JD02885>, 1992.
- Monteil, G., Houweling, S., Dlugokenky, E. J., Maenhout, G., Vaughn, B. H., White, J. W. C., and Rockmann, T.: Interpreting methane variations in the past two decades using measurements of CH_4 mixing ratio and isotopic composition, *Atmospheric Chemistry and Physics*, 11, 9141–9153, <https://doi.org/https://doi.org/10.5194/acp-11-9141-2011>, <https://www.atmos-chem-phys.net/11/9141/2011/acp-11-9141-2011.html>, 2011.
- Nakagawa, F., Yoshida, N., Sugimoto, A., Wada, E., Yoshioka, T., Ueda, S., and Vijarnsorn, P.: Stable isotope and radiocarbon compositions of methane emitted from tropical rice paddies and swamps in Southern Thailand, *Biogeochemistry*, 61, 1–19, <https://doi.org/10.1023/A:1020270032512>, <https://doi.org/10.1023/A:1020270032512>, 2002.
- Nakagawa, F., Tsunogai, U., Komatsu, D. D., Yamada, K., Yoshida, N., Moriizumi, J., Nagamine, K., Iida, T., and Ikebe, Y.: Automobile exhaust as a source of ^{13}C - and D -enriched atmospheric methane in urban areas, *Organic Geochemistry*, 36, 727–738, <https://doi.org/10.1016/j.orggeochem.2005.01.003>, <http://www.sciencedirect.com/science/article/pii/S0146638005000124>, 2005.
- Phillips, N. G., Ackley, R., Crosson, E. R., Down, A., Huttyra, L. R., Brondfield, M., Karr, J. D., Zhao, K., and Jackson, R. B.: Mapping urban pipeline leaks: Methane leaks across Boston, *Environmental Pollution*, 173, 1–4, <https://doi.org/10.1016/j.envpol.2012.11.003>, <https://linkinghub.elsevier.com/retrieve/pii/S0269749112004800>, 2013.
- Popp, T. J., Chanton, J. P., Whiting, G. J., and Grant, N.: Methane stable isotope distribution at a Carex dominated fen in north central Alberta, *Global Biogeochemical Cycles*, 13, 1063–1077, <https://doi.org/10.1029/1999GB900060>, <https://agupubs.onlinelibrary.wiley.com/doi/abs/10.1029/1999GB900060>, 1999.
- Sansone, F. J., Popp, B. N., Gasc, A., Graham, A. W., and Rust, T. M.: Highly elevated methane in the eastern tropical North Pacific and associated isotopically enriched fluxes to the atmosphere, *Geophysical Research Letters*, 28, 4567–4570, <https://doi.org/10.1029/2001GL013460>, <http://agupubs.onlinelibrary.wiley.com/doi/abs/10.1029/2001GL013460>, 2001.
- Santoni, G. W., Lee, B. H., Goodrich, J. P., Varner, R. K., Crill, P. M., McManus, J. B., Nelson, D. D., Zahniser, M. S., and Wofsy, S. C.: Mass fluxes and isofluxes of methane (CH_4) at a New Hampshire fen measured by a continuous wave quantum cascade laser spectrometer, *Journal of Geophysical Research: Atmospheres*, 117, <https://doi.org/10.1029/2011JD016960>, <https://agupubs.onlinelibrary.wiley.com/doi/abs/10.1029/2011JD016960>, 2012.
- Smith, L. K., Lewis, W. M., Chanton, J. P., Cronin, G., and Hamilton, S. K.: Methane emissions from the Orinoco River floodplain, Venezuela, *Biogeochemistry*, 51, 113–140, <https://doi.org/10.1023/A:1006443429909>, <https://doi.org/10.1023/A:1006443429909>, 2000.
- Sriskantharajah, S., Fisher, R. E., Lowry, D., Aalto, T., Hatakka, J., Aurela, M., Laurila, T., Lohila, A., Kuitunen, E., and Nisbet, E. G.: Stable carbon isotope signatures of methane from a Finnish subarctic wetland, *Tellus B: Chemical and Physical Meteorology*, 64, 18 818, <https://doi.org/10.3402/tellusb.v64i0.18818>, <https://www.tandfonline.com/doi/full/10.3402/tellusb.v64i0.18818>, 2012.
- Sugimoto, A. and Fujita, N.: Hydrogen Concentration and Stable Isotopic Composition of Methane in Bubble Gas Observed in a Natural Wetland, *Biogeochemistry*, 81, 33–44, <https://doi.org/10.1007/s10533-006-9028-4>, <https://doi.org/10.1007/s10533-006-9028-4>, 2006.

- Townsend-Small, A., Tyler, S. C., Pataki, D. E., Xu, X., and Christensen, L. E.: Isotopic measurements of atmospheric methane in Los Angeles, California, USA: Influence of “fugitive” fossil fuel emissions, *Journal of Geophysical Research: Atmospheres*, 117, <https://doi.org/10.1029/2011JD016826>, <https://agupubs.onlinelibrary.wiley.com/doi/abs/10.1029/2011JD016826>, 2012.
- 5 Tyler, S. C., Blake, D. R., and Rowland, F. S.: $^{13}\text{C}/^{12}\text{C}$ ratio in methane from the flooded Amazon forest, *Journal of Geophysical Research: Atmospheres*, 92, 1044–1048, <https://doi.org/10.1029/JD092iD01p01044>, <http://agupubs.onlinelibrary.wiley.com/doi/abs/10.1029/JD092iD01p01044>, 1987.
- Tyler, S. C., Zimmerman, P. R., Cumberbatch, C., Greenberg, J. P., Westberg, C., and Darlington, J. P. E. C.: Measurements and interpretation of ^{13}C of methane from termites, rice paddies, and wetlands in Kenya, *Global Biogeochemical Cycles*, 2, 341–355, <https://doi.org/10.1029/GB002i004p00341>, <http://agupubs.onlinelibrary.wiley.com/doi/abs/10.1029/GB002i004p00341>, 1988.
- 10 Woltemate, I., Whiticar, M. J., and Schoell, M.: Carbon and hydrogen isotopic composition of bacterial methane in a shallow freshwater lake: Isotopes of bacterial methane, *Limnology and Oceanography*, 29, 985–992, <https://doi.org/10.4319/lo.1984.29.5.0985>, <http://doi.wiley.com/10.4319/lo.1984.29.5.0985>, 1984.
- Yamada, K., Ozaki, Y., Nakagawa, F., Sudo, S., Tsuruta, H., and Yoshida, N.: Hydrogen and carbon isotopic measurements of methane from agricultural combustion: Implications for isotopic signatures of global biomass burning sources, *Journal of Geophysical Research*, 111, D16 306, <https://doi.org/10.1029/2005JD006750>, <http://doi.wiley.com/10.1029/2005JD006750>, 2006.
- 15 Zazzeri, G., Lowry, D., Fisher, R. E., France, J. L., Lanoisellé, M., and Nisbet, E. G.: Plume mapping and isotopic characterisation of anthropogenic methane sources, *Atmospheric Environment*, 110, 151–162, <https://doi.org/10.1016/j.atmosenv.2015.03.029>, <http://www.sciencedirect.com/science/article/pii/S1352231015002538>, 2015.