

Supplement of Atmos. Meas. Tech., 9, 159–177, 2016
<http://www.atmos-meas-tech.net/9/159/2016/>
doi:10.5194/amt-9-159-2016-supplement
© Author(s) 2016. CC Attribution 3.0 License.



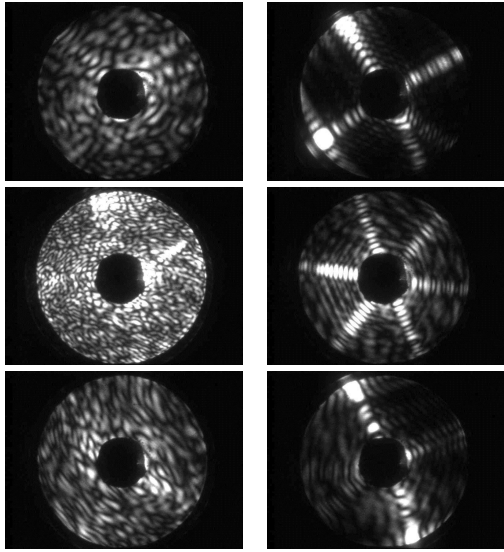
Supplement of

In situ characterization of mixed phase clouds using the Small Ice Detector and the Particle Phase Discriminator

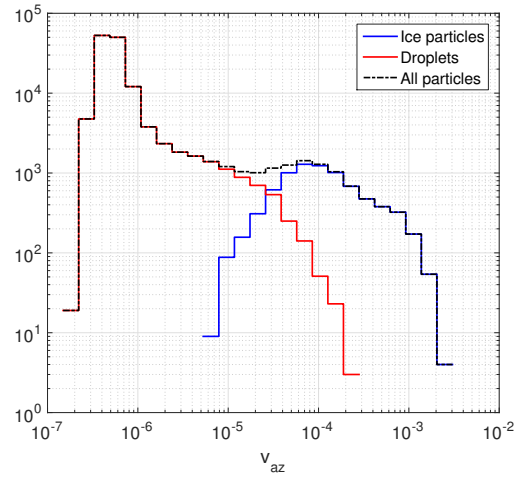
P. Vochezer et al.

Correspondence to: M. Schnaiter (martin.schnaiter@kit.edu)

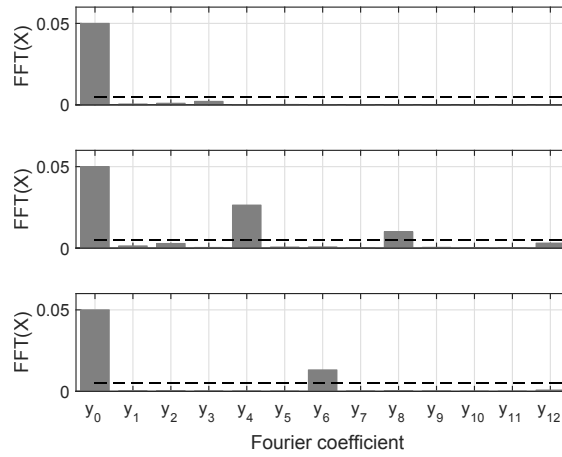
The copyright of individual parts of the supplement might differ from the CC-BY 3.0 licence.



(a) Figure S1: Example images recorded by the SID-3 during CLACE 2013 from 16:00 24/02/2013 till 04:00 25/02/2013 UTC. Left column: Patterns classified as irregular. Right column: Patterns classified as pristine.



(b) Figure S2: Histogram of the azimuthal variance values of all particles, droplets and ice particles recorded from 16:00 24/02/2013 till 04:00 25/02/2013 at the Jungfraujoch. The time series is displayed in Fig. 13. and variance as a function of particle diameter in Fig 15.



(c) Figure S3: Result of the Fourier analysis of the azimuthal intensity profiles of the scattering patterns displayed in Fig. 1. Top: Fourier analysis of the irregular ice particle (Fig 1 b)). Middle: Fourier analysis of the columnar ice particle (Fig 1 c)). Bottom: Fourier analysis of the hexagonal ice particle (Fig 1 d)). The dotted line indicates the threshold for a maximum.