



Comparison of MODIS and VIIRS cloud properties with ARM ground-based observations over Finland

Moa K. Sporre¹, Ewan J. O'Connor^{2,3}, Nina Håkansson⁴, Anke Thoss⁴, Erik Swietlicki¹, and Tuukka Petäjä⁵

¹Department of Physics, Lund University, Lund, Sweden

²Department of Meteorology, University of Reading, Reading, UK

³Finnish Meteorological Institute, Helsinki, Finland

⁴Swedish Meteorological and Hydrological Institute, Norrköping, Sweden

⁵Department of Physics, University of Helsinki, Helsinki, Finland

Correspondence to: Moa K. Sporre (moa.sporre@nuclear.lu.se)

Received: 27 January 2016 – Published in Atmos. Meas. Tech. Discuss.: 16 February 2016

Revised: 28 June 2016 – Accepted: 29 June 2016 – Published: 21 July 2016

Abstract. Cloud retrievals from the Moderate Resolution Imaging Spectroradiometer (MODIS) instruments aboard the satellites Terra and Aqua and the Visible Infrared Imaging Radiometer Suite (VIIRS) instrument aboard the Suomi-NPP satellite are evaluated using a combination of ground-based instruments providing vertical profiles of clouds. The ground-based measurements are obtained from the Atmospheric Radiation Measurement (ARM) programme mobile facility, which was deployed in Hyytiälä, Finland, between February and September 2014 for the Biogenic Aerosols – Effects on Clouds and Climate (BAECC) campaign. The satellite cloud parameters cloud top height (CTH) and liquid water path (LWP) are compared with ground-based CTH obtained from a cloud mask created using lidar and radar data and LWP acquired from a multi-channel microwave radiometer. Clouds from all altitudes in the atmosphere are investigated. The clouds are diagnosed as single or multiple layer using the ground-based cloud mask. For single-layer clouds, satellites overestimated CTH by 326 m (14 %) on average. When including multilayer clouds, satellites underestimated CTH by on average 169 m (5.8 %). MODIS collection 6 overestimated LWP by on average 13 g m⁻² (11 %). Interestingly, LWP for MODIS collection 5.1 is slightly overestimated by Aqua (4.56 %) but is underestimated by Terra (14.3 %). This underestimation may be attributed to a known issue with a drift in the reflectance bands of the MODIS instrument on Terra. This evaluation indicates that the satellite cloud parameters selected show reasonable agreement with their ground-based counterparts over Finland, with minimal

influence from the large solar zenith angle experienced by the satellites in this high-latitude location.

1 Introduction

Clouds are a very important component of the Earth's energy budget since they contribute to a large fraction of both the reflected shortwave radiation and absorbed longwave radiation. The magnitude and sign of the cloud impact depends on the cloud altitude, and a correct representation of the cloud distribution in the vertical is crucial to obtain a good estimate of the Earth's energy budget. One of the largest uncertainties in the global climate models used to predict the future climate is the representation of clouds, their feedbacks and their interaction with short- and longwave radiation (Dolinar et al., 2015; IPCC, 2013). Satellite cloud retrievals provide cloud distributions on a global scale, which are used to assess global climate models (e.g. Dolinar et al., 2015). It is therefore of great importance to evaluate the satellite-retrieved cloud properties and investigate whether they provide an accurate representation of the cloud fields.

The Moderate Resolution Imaging Spectroradiometer (MODIS) instrument is carried aboard the satellites Terra and Aqua, providing information on clouds (and many other terrestrial and atmospheric properties) since 2000 and 2002, respectively. Terra and Aqua are polar-orbiting with each MODIS instrument providing an image of the whole globe every 2 days (Platnick et al., 2003). A new collection (num-

ber 6) of MODIS Level 2 products was released in 2014. Several updates to the cloud product were implemented for collection 6 (hereafter C6) compared to the previous collection 5.1 (hereafter C5.1). The cloud top properties are now provided at 1 km spatial resolution along with new products, such as cloud top height (CTH) (Baum et al., 2012). Furthermore, the cloud optical properties have been modified, including updates of the radiative transfer model and look-up tables (Platnick et al., 2014) and the thermodynamic phase retrievals (Baum et al., 2012).

The Visible Infrared Imaging Radiometer Suite (VIIRS) is carried aboard the Suomi-NPP satellite, which has been in orbit since October 2011 (Cao et al., 2013). Suomi-NPP is also a polar-orbiting satellite, and the VIIRS sensor is similar to the MODIS sensor but has higher spatial resolution in the infrared bands used for cloud height retrievals. However, VIIRS has fewer bands available for CTH retrievals. Cloud products are also available from the VIIRS sensor.

In 1989 the U.S. Department of Energy initiated the Atmospheric Radiation Measurement (ARM) programme with the purpose of providing ground-based measurements of clouds, and later of aerosols and precipitation (Ackerman and Stokes, 2003). Several long-term measurement stations were implemented containing a comprehensive suite of in situ and passive and active remote sensing instruments. These long-term stations were later complemented with three mobile facilities and one aerial facility (Mather and Voyles, 2012).

ARM data have previously been used to validate satellite retrievals. Mace et al. (2005) evaluated cirrus retrievals from MODIS and Clouds and the Earth's Radiant Energy System (CERES) using ARM data from the Southern Great Plains Site (SGP). Data from this site were also used by Dong et al. (2008), who compared ARM low-level cloud properties with CERES-MODIS (CM) retrievals. One ARM mobile facility (AMF) was deployed in the Azores (Atlantic Ocean) for 18 months, and these data were compared to CM data to validate the boundary-layer cloud retrievals (Xi et al., 2014). Other researchers have also used ground-based measurements to evaluate MODIS (Liu et al., 2013) and CM (Yan et al., 2015) cloud property retrievals over China. MODIS cloud properties have also been evaluated with other satellite instruments such as Cloud-Aerosol Lidar with Orthogonal Polarization (CALIOP) (Holz et al., 2008) and Multi-angle Imaging Spectroradiometer (MISR) (Naud et al., 2002).

This study uses ARM data from the AMF deployment in Hyytiälä, Finland, from February 2014 to September 2014 during the Biogenic Aerosols – Effects on Clouds and Climate, (BAECC) campaign (Petäjä, 2013; Petäjä et al., 2016). The AMF data are used to evaluate the CTH from MODIS and VIIRS. The liquid water path (LWP) from MODIS C5.1 and C6 is also assessed to quantify the improvement of the updated C6 product. The investigation is not restricted to any particular cloud type but rather includes clouds from all altitudes in the atmosphere. Because the measurement site is located at a relatively high latitude, the cloud parameters can

be investigated both at high and moderately high solar zenith angles (SZAs). This is useful since satellite cloud retrievals have previously been found to be affected by SZA (Vant-Hull et al., 2007; Grosvenor and Wood, 2014). This study does not provide a complete validation of the MODIS cloud properties investigated, but rather provides insights into the performance of the satellite cloud retrievals. These insights can be used together with previous and future studies to improve satellite representation of cloud fields.

2 Method

2.1 Comparison methods

Passive instruments on orbiting satellites have a much wider field of view but lower temporal resolution than most ground-based measurements. Therefore, care must be taken when matching satellite and ground-based measurements to perform an inter-comparison at a given location. Here, 1 h averaged ground-based data centred at the satellite overpass time have been matched against satellite pixels whose centre is at maximum 15 km away from the Hyytiälä measurement station, essentially creating a circle with a diameter of 30 km around the station. Similar averaging times and areas have been used in several previous studies (Cess et al., 1996; Dong et al., 2008; Xi et al., 2014; Yan et al., 2015).

2.2 MODIS

The MODIS instrument is carried aboard the polar-orbiting satellites Terra and Aqua. Terra was launched in 1999, Aqua in 2002, and both satellites are sun-synchronous with Terra in a descending orbit (equatorial crossing 10:30 local solar time) and Aqua in an ascending orbit (equatorial crossing 13:30 local solar time). MODIS is a whisk-broom scanning radiometer that scans the entire Earth every 2 days (Platnick et al., 2003). The visible and infrared spectrum is covered by 36 bands which have spatial resolution of 250 m (2 bands), 500 m (5 bands) and 1000 m (9 bands) at nadir. The MODIS data are open access and provided as calibrated data from the wavelength bands (level 1), instantaneous geophysical products (level 2) as well as spatially and temporally averaged geophysical products (level 3).

CTH is a new C6 level 2 cloud product produced from MODIS level 1 data. Cloud top pressure (CTP) and temperature were provided in C5.1, at 5 km spatial resolution. In C6 the spatial resolution of the cloud top properties has been increased to 1 km, but they are also still available at 5 km resolution. The 1 km resolution CTH will be used in this study. For high- and mid-level clouds, CTP is retrieved from 4 spectral bands within the 15 μm CO₂ absorption region using the CO₂ slicing method (Menzel et al., 2008). The absorption by CO₂ makes the atmosphere increasingly opaque at wavelengths from 13.5 to 15 μm , causing the MODIS bands in this region to be sensitive to radiances from different altitudes in

the atmosphere. Clear-sky radiances are subtracted from observed radiances, and ratios of these differences are used to retrieve CTP. The method uses a top-down approach, where the ratio of the bands sensitive to clouds at the highest altitudes is tested first. If this does not yield a solution, the bands sensitive to clouds at progressively lower altitudes are then tested. When a solution is found, CTH is calculated from the CTP product using gridded meteorological data from the National Centers for Environmental Prediction (NCEP) Global Forecast System.

If the CO₂ slicing method does not return a solution for any of the bands in the 15 μm region, CTH is derived with the infrared window approach (IRW). The IRW method retrieves the cloud top temperature from the 11 μm brightness temperature (BT). Temperature inversions in the lower atmosphere can create biases in the cloud top properties, and a new technique to avoid this problem over ocean areas was developed for C6. Monthly average apparent 11 μm BT lapse rates are derived from collocated MODIS 11 μm BT, CALIOP cloud heights and modelled and atmospherically corrected surface temperatures. This aims to improve the representation of the lapse rates compared to the gridded meteorological data used to obtain CTP from BT in C5.1. Hence in C6, CTP and CTH are derived from observed cloudy 11 μm BT using the zonal monthly mean lapse rates over the ocean (Baum et al., 2012).

The other parameter compared in this study, LWP, is available in both C6 and C5.1 cloud products at 1 km spatial resolution. LWP is derived from two other cloud products, the cloud optical thickness (COT) and the effective radius (r_e), using the formula $LWP = 4r_e COT / 3Q(r_e)$, where $Q(r_e)$ is the extinction efficiency (King et al., 2006). This retrieval has not changed between C5.1 and C6, but modifications in the COT and r_e retrievals will have a direct impact on the derived LWP. The changes relevant to LWP in this study are the updates of the retrieval look-up tables for COT and r_e ; the thermodynamic phase retrieval being improved (Platnick et al., 2014); and improvements to the multilayer cloud detection (Platnick et al., 2014; Wind et al., 2010). The average LWP uncertainties for the pixels used in this study are 21 % (Aqua) and 23 % (Terra) for C6 and 36 % (Aqua) and 32 % (Terra) for C5.1.

2.3 VIIRS

VIIRS Suomi-NPP is a scanning radiometer flying aboard Suomi-NPP, a satellite in a sun-synchronous ascending orbit crossing the Equator at 13:30 local time. VIIRS has 16 M-bands with a nadir resolution of 750 m and 6 I-bands with a resolution of 375 m at nadir. It has channels both in the infrared and the visible region of the electromagnetic spectrum.

The level 1 data used in this investigation were produced at SMHI (Swedish Meteorological and Hydrological Institute) from local reception of VIIRS data. The level 2 cloud products used here were produced with the Polar Platform System (PPS) software version 2014+patch20150327 de-

veloped by the Satellite Application Facility on Support to Nowcasting & Very Short Range Forecasting (NWC SAF) (<http://www.nwcsaf.org>). The PPS cloud top temperature and height algorithm in PPS contains two different algorithms: one for opaque clouds and one for semi-transparent or suspected semi-transparent clouds. The 11–12 μm brightness temperature difference (BTD) determines which algorithm is used. For opaque clouds, the 11 μm BT is compared to numerical weather prediction (NWP) temperature profiles from the European Centre for Medium-Range Weather Forecasts (ECMWF) corrected for atmospheric absorption to estimate height. A more complex histogram method is used for semi-transparent clouds, utilizing the variation across neighbouring pixels to estimate the height. The assumption that all clouds in a 32 × 32 square set of pixels are at the same height is used to estimate the cloud temperature. The algorithm fits a curve to the 11–12 μm BTD as function of the 11 μm BT for the pixels. The cloud top temperature obtained from this fit is then compared to the model forecast temperature profile in the same manner as for opaque clouds. More algorithm details can be found in the Algorithm Theoretical Basis Document for Cloud Top Temperature, Pressure and Height from NWC/PPS 1.1 Edn., 2014 (available at <http://www.nwcsaf.org>).

Level 1 data were only received by SMHI until the beginning of May 2014, and hence the VIIRS data are only available during the first 3 months of the investigation.

2.4 AMF2 Hyytiälä

From February to September 2014, AMF2 was deployed at the Station for Measuring Ecosystem – Atmosphere Relations (SMEAR) II station (Hari and Kulmala, 2005) in Hyytiälä, Finland. The deployment was part of a campaign called the Biogenic Aerosols Effects on Clouds and Climate (BAECC) (Petäjä, 2013; Petäjä et al., 2016), a collaboration between University of Helsinki, Finnish Meteorological Institute, University of Eastern Finland and ARM. AMF2 contains a comprehensive suite of ground-based in situ instrumentation together with active and passive remote sensing instruments to obtain numerous atmospheric properties with very high temporal and spatial resolution.

2.4.1 Cloud top height

CTH is provided by the cloud mask created from a combination of the 35 GHz Ka-band ARM Zenith-pointing cloud Radar (KAZR) and the micropulse lidar or ceilometer. Gaps in the operation of the KAZR instrument were supplemented by the 95 GHz Marine W-Band ARM Cloud Radar (MWACR). The data from these instruments were processed using the Cloudnet scheme (Illingworth et al., 2007), which diagnoses the atmospheric targets (such as aerosol, cloud, or precipitation) together with their phase if appropriate. CTH is then obtained directly as the highest cloud pixels diagnosed

by this target classification. The nominal vertical and temporal resolution of CTH provided from this scheme is 30 m and 30 s.

The minimum reflectivity at 10 km is about -27 dBZ, which leads to a derived ice water content of about $5 \times 10^{-6} \text{ kg m}^{-3}$ when using a reflectivity–temperature-based relationship (e.g. Hogan et al., 2006). This corresponds to an optical depth of about 0.01 m^{-1} (e.g. Heymsfield et al., 2003) with an uncertainty of about a factor of 3 when considering both potential biases in reflectivity and uncertainties in the ice water content retrieval.

2.4.2 Liquid water path

LWP is obtained from the Radiometrics microwave radiometer, MWR, a vertically pointing passive instrument measuring the microwave atmospheric BT at 23.8 and 31.4 GHz. A radiative transfer model with monthly regression coefficients (Liljegren, 1999) is used to obtain column-integrated water vapour and liquid water amounts. When properly calibrated, BTs are obtained with an absolute accuracy better than 0.5 K (Maschwitz et al., 2013), which corresponds to an LWP uncertainty of about 20 g m^{-2} . MWR retrievals are limited to non-precipitating profiles (Crewell and Löhnert, 2003) but are not affected by ice cloud optical depth. LWP in super-cooled clouds can be retrieved reliably, although LWP values may be small and close to the instrument uncertainty.

2.5 Selection criteria

For the satellite scenes to be included in the study, the CTH retrievals had to be successful for at least 50 % of the pixels inside a 30 km circle around the measurement station. To ensure a fair comparison, homogeneity was considered and only cases where at least 90 % of all pixels were within 1000 m of the median height were included in the analysis. If these criteria were met, the geometrical average height for the clouds within the circle was calculated as this type of averaging was most suitable.

The LWP comparison was performed where satellite CTH was successfully retrieved for more than 50 % of the pixels inside the circle. Furthermore, the multilayer cloud product was used to remove pixels determined to contain several layers of clouds. Moreover, only pixels determined to contain liquid clouds by the satellite were included in the comparison since the ground-based ARM microwave radiometer measures the LWP only for liquid clouds. Only the cases where 50 % of the pixels in the circle passed every step of the screening process were included in the LWP analysis.

For ground-based data, 1 h centred on the satellite overpass time was selected for satellite overpasses that met the selection criteria above. Similar criteria for CTH homogeneity were applied: at least 90 % of the CTH values were within 1000 m of the median height, and more than 50 % of the profiles contained clouds. Again, a geometrical average

CTH was calculated for cases that passed the screening. The scenes were investigated for multiple cloud layers (distinct layers separated by more than 500 m) and the fraction of multilayer clouds for each case calculated. Considering the LWP comparison, multiple cloud layers were removed from the analysis, as was performed for the satellite LWP. At least 50 % of the pixels had to contain single-layer cloud only, for a geometrical average LWP to be calculated.

3 Results and discussion

There were 871 (Aqua) and 869 (Terra) satellite overpasses at Hyttiälä during the campaign. Of these, 322 (Aqua) and 264 (Terra) passed the selection criteria for the satellite scene CTH screening. From these scenes, 181 (Aqua) and 162 (Terra) passed the corresponding ground-based selection criteria for inclusion in the final analysis. The number of LWP cases that passed both satellite and ground-based selection is smaller since only daytime satellite data are used. There were fewer data available for the VIIRS intercomparison, with a total of 300 potential Hyttiälä overpasses, of which 127 passed the satellite CTH screening with 52 cases also meeting the ground-based selection criteria. There were not enough VIIRS cases that passed the LWP screening to enable an intercomparison because there were only data available during the winter months of the campaign; at high latitudes this precludes the use of visible/near-IR satellite retrievals since there is not enough light. Furthermore, during the period when there was sufficient light, most of the clouds in the VIIRS satellite scenes were classified as ice and no LWP was retrieved.

3.1 Cloud top height

The CTH retrievals are compared separately for daytime and nighttime conditions, where daytime conditions are defined as those that have a low enough SZA for the optical properties to be retrieved. For the MODIS retrievals, the maximum SZA for optical properties is 81.4° (King et al., 2006) while the VIIRS algorithm has the maximum SZA of 72° (SMHI, 2015). During February in Finland, SZAs are higher than 72° at the daytime overpass and hence VIIRS data are classified as nighttime while MODIS data are classified as daytime.

The CTH intercomparison during nighttime conditions is presented in Fig. 1. For both the MODIS and VIIRS datasets, different markers are used depending on the CTH retrieval that was dominant ($> 50\%$ of the pixels) for the case. The datasets are also divided according to whether multilayer cloud fraction in the ARM data is smaller than 5 % (single-layer case) or more than 5 % (multilayered case). Since the ARM measurements do not cover the entire satellite scene there may still be multilayered clouds present in parts of the satellite scene. The statistics in Table 1 are calculated for the single-layered scenes separately and the whole dataset to-

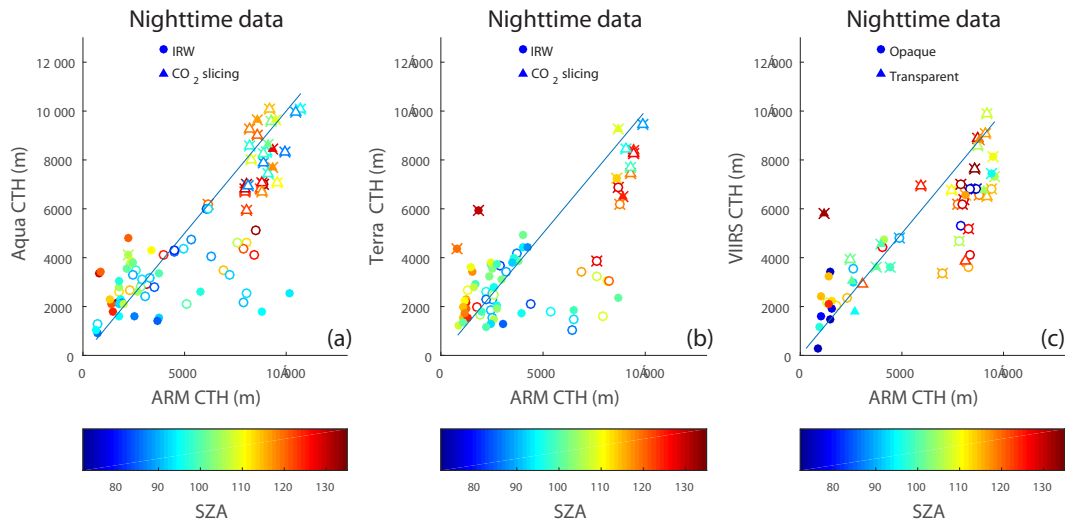


Figure 1. Scatterplots of satellite cloud top heights (CTH) versus ARM cloud top heights for nighttime cases for (a) MODIS Aqua, (b) MODIS Terra and (c) VIIRS. The colouring of the markers is according to solar zenith angle (SZA). For the MODIS plots, markers in the shape of circles indicate that the IRW retrieval of CTH was used while triangles indicate that the CO₂ slicing method has been used. For VIIRS, the triangles represent cases where the CTH was retrieved using the transparent method while the circles represent cases for which the opaque method was used. Open symbols represent cases where multiple cloud layers are present in the ARM data and the filled symbols represent single-layer cases. Cases where most pixels contain single ice clouds have a cross drawn behind them. The lines in the figures are 1 : 1 lines.

Table 1. Median and mean differences, standard deviations of the differences, correlation coefficients and *p* values between satellite and ARM cloud top heights (CTH) for single cases and all cases during nighttime.

Satellite CTH- ARM CTH	No. of samples	Median (mean) diff (m)	SD diff (m)	Median diff (%)	SD diff (%)	<i>r</i>	<i>p</i>
Aqua single	35	316 (−88)	2200	13	92	0.69	0.00
Aqua all	89	−219 (−733)	2000	−4.66	42	0.79	0.00
Terra single	42	407 (134)	1800	15.5	69	0.61	0.00
Terra all	73	63 (−667)	2200	2.29	78	0.67	0.00
VIIRS single	24	309 (112)	1500	10.5	51	0.9	0.00
VIIRS all	56	−150 (−718)	1800	−2.54	31	0.83	0.00

gether. Both the median and mean differences are reported in the tables for completeness. However, only the medians will be discussed since the differences were generally not normally distributed and often contained outliers which significantly affected the means. Moreover, cases where more than 50 % of the pixels are classified as ice have a cross behind them (Fig. 1).

Most high-level cloud scenes contain multilayered clouds (Fig. 1). Between 39 and 57 % of the nighttime cases are classified as containing single-layer clouds (Table 1). For these, the median differences are positive between 309 and 407 m (10.5–16.3 %) indicating a satellite overestimate of CTH relative to the ground-based data. When multilayered cloud cases are included, the median difference decreases for all three datasets and becomes negative for Aqua and VIIRS (Table 1). There are several plausible causes for the decrease in the median differences. One is that many high cloud cases

are classified as multilayer clouds, and CTHs for high-level clouds are often underestimated by satellites (Holz et al., 2008). Another explanation is that the satellite retrievals underestimate CTH when several layers of clouds are present. The satellite retrievals obtain CTH from the cloud radiating height, which corresponds to a height below the CTH, at least for optically thin clouds. This is known and corrected for, but this procedure becomes more problematic when several cloud layers are present, which may have different optical thicknesses.

Figure 1 also shows which retrieval method is selected for each cloud type. For MODIS, the CO₂ slicing method is only used on high clouds while the IRW method is used for both high- and low-level clouds. The CO₂ slicing method is the dominant algorithm for 30 % of the Aqua cases but only 10 % for Terra. This difference is almost certainly due to a severe noise problem with one of the wavelength bands of the

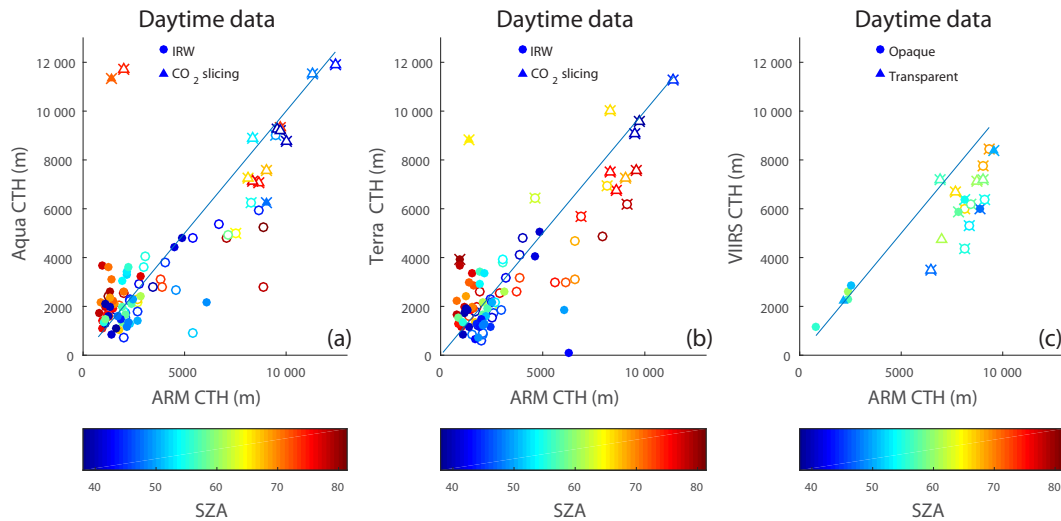


Figure 2. The same as Fig. 1 except for daytime cases.

Table 2. Same as in Table 1 except for daytime cases.

Satellite CTH- ARM CTH	No. of samples	Median (mean) diff (m)	SD diff (m)	Median diff (%)	SD diff (%)	<i>r</i>	<i>p</i>
Aqua single	46	358 (403)	1800	19.3	99	0.35	0.02
Aqua all	92	−208 (−126)	2000	−8.92	87	0.76	0.00
Terra single	44	241 (214)	1900	13.7	107	0.03	0.87
Terra all	89	−332 (−264)	1600	−15.4	76	0.79	0.00
VIIRS single	9	−132 (−781)	1200	−4.88	45	0.98	0.00
VIIRS all	22	−1700 (−1480)	1200	−24.1	18	0.91	0.00

MODIS instrument aboard Terra. This band cannot be used in the CO₂ slicing algorithm, reducing the number of ratios available to the algorithm (from 3 to 2) for finding a successful solution. In both the Terra and Aqua datasets, there is a significant group of IRW cases for which the satellite retrievals significantly underestimate CTH. This group contains both single- and multilayer cloud cases. Previous studies (Holz et al., 2008; Naud et al., 2004) found large underestimates of CTH when the CO₂ slicing method does not yield a solution and the IRW method is used instead, particularly for optically thin cirrus. VIIRS data also display significant underestimates of CTH for high clouds (Fig. 1c). Nevertheless, for VIIRS data, both CTH algorithms are used on clouds of varying altitude and there does not seem to be any particular bias by either algorithm. The colour-coding of the cases according to SZA does not show any CTH dependency on SZA at night.

The results for the daytime CTH comparison are displayed in Fig. 2 and reported in Table 2. Approximately 50 % of the cases are single-layer clouds for all three datasets and, similar to nighttime cases, very few high clouds are defined as single-layer clouds. The Aqua (Terra) median difference between the MODIS and ground-based CTH is 358 m (241 m)

for the single-layered clouds only and is reduced to −208 m (−332 m) when all cases are included – a response similar to that found for the nighttime cases. For VIIRS, the median differences are negative: −132 m for single-layer clouds and −1700 m when including multi-layer cases. For low-level clouds, CTH is very close to the 1 : 1 line but CTH for high cloud is underestimated by VIIRS. However, no general conclusions regarding the performance of the algorithm should be drawn from this comparison since the number of daytime cases for VIIRS is low (Sect. 3).

The daytime results show a similar percentage to nighttime in retrieval method selection, except that now Terra and Aqua have a similar percentage of cases where the CO₂ slicing method is dominant. There are, as for the nighttime datasets, a few cases where IRW retrievals significantly underestimate CTH. Moreover, there are some cases in the daytime data, where satellite CTH is several thousands of metres higher than ground-based CTH. This may occur when thin cirrus is present over optically thick low-level clouds and only detected by satellite. Optically thin cirrus is not always detected by cloud radar and the lidar may not be able to penetrate through low-level clouds. The CO₂ slicing method is the dominant method for all of these cases suggesting that

Table 3. Median and mean differences, standard deviations of the differences, correlation coefficients and p values between satellite and ARM cloud top heights (CTH) for nighttime low and high cloud separately.

Satellite CTH- ARM CTH	No. of samples	Median (mean) diff (m)	SD diff (m)	Median diff (%)	SD diff (%)	r	p
Aqua low	46	279 (234)	1200	10.7	47	0.43	0
Aqua high	43	-1290 (-1770)	2100	-16.6	26	0.47	0
Terra low	52	323 (289)	1300	13.4	53	0.29	0.03
Terra high	21	-2620 (-3040)	2100	-35.4	28	0.85	0
VIIRS low	27	468 (625)	1100	17.7	40	0.73	0
VIIRS high	29	-1820 (-1970)	1400	-24.1	19	0.61	0

Table 4. Same as in Table 3 except for daytime cases.

Satellite CTH- ARM CTH	No. of samples	Median (mean) diff (m)	SD diff (m)	Median diff (%)	SD diff (%)	r	p
Aqua low	70	129 (364)	1900	6.3	94	0.19	0.11
Aqua high	22	-1410 (-1690)	1500	-17.8	19	0.84	0
Terra low	72	-179 (130)	1300	-9.19	68	0.43	0
Terra high	17	-1870 (-1930)	1800	-24.8	24	0.88	0
VIIRS low	5	188 (154)	201	8.08	9	0.96	0.01
VIIRS high	17	-1980 (-1960)	979	-27	13	0.68	0

this method can successfully detect thin cirrus over low-level clouds. Another interesting feature in Fig. 2 is that MODIS CTH for single-layer low-level clouds seems to be somewhat overestimated at high SZA; all filled red-orange circles are above the 1 : 1 line (Fig. 2a and b). This is not caused by simultaneously high viewing zenith angles of the MODIS sensors.

Since large errors in the CTH retrievals are a greater issue for low-level clouds than high-level clouds, we re-performed the analysis for all cases and divided them according to CTH measured from the ground with a limit between high and low clouds at 6000 m. The results are shown in Table 3 (nighttime cases) and Table 4 (daytime cases). For the low-level clouds, the CTH is overestimated by between 129 and 468 m, except for the Terra daytime cases for which the CTH is underestimated by 179 m. The CTH for the high-level clouds is underestimated for all the datasets by between 1290 and 2610 m. Thus, the differences between the satellite and ground-based measurements of CTH are lower for the low-level clouds than the high-level clouds. Moreover, the CTH is generally overestimated for low-level clouds and underestimated for high-level clouds, which may help explain the CTH results regarding single- and multilayer clouds.

There are, to our knowledge, no prior studies evaluating MODIS C6 CTH, but previous studies have investigated the performance of the earlier collections. Collection 4 (C4) CTP has been combined with ECMWF operational analysis pressure profiles and compared to ground-based radar (Naud et al., 2005) and lidar (Naud et al., 2004) data. MODIS CTH was then found to agree with radar CTH within 1 km for mid-

and high-level clouds and within 3 km for low-level clouds (Naud et al., 2005). The comparison with the lidar showed somewhat smaller differences for the low-level clouds (-1.2 to 1.5 km) and larger differences for the high clouds (-1.4 to 2.7 km). These values are greater than the median differences between ground-based and MODIS CTH found here, but less than the extreme values. Holz et al. (2008) combined collection 5 (C5) MODIS CTP with NCEP Global Forecast System model temperature profiles and compared the calculated CTH with the satellite-borne CALIOP instrument. The MODIS retrievals were found to underestimate CTH by 1.4 ± 2.9 km and for high clouds as much as 4 km. These differences are larger than those found in this study and are likely due to the viewing directions relative to the clouds that ground-based and satellite active remote sensing instruments exhibit.

Both night- and daytime data were evaluated with respect to cloud fraction to determine the impact of this parameter. Cloud fraction does not appear to be associated with any specific under-/overestimates or affect the magnitude of the differences. A few of the outliers do, however, have cloud fractions close to 0.5 (minimum cloud fraction, Sect. 2.5).

3.2 Liquid water path

For the satellites considered here, LWP is obtained from visible parameters and is hence only available when SZAs are below the thresholds stated in Sect. 3.1. Here, it is investigated whether LWP from the new C6 products has a better agreement with the ground-based measurements, relative to

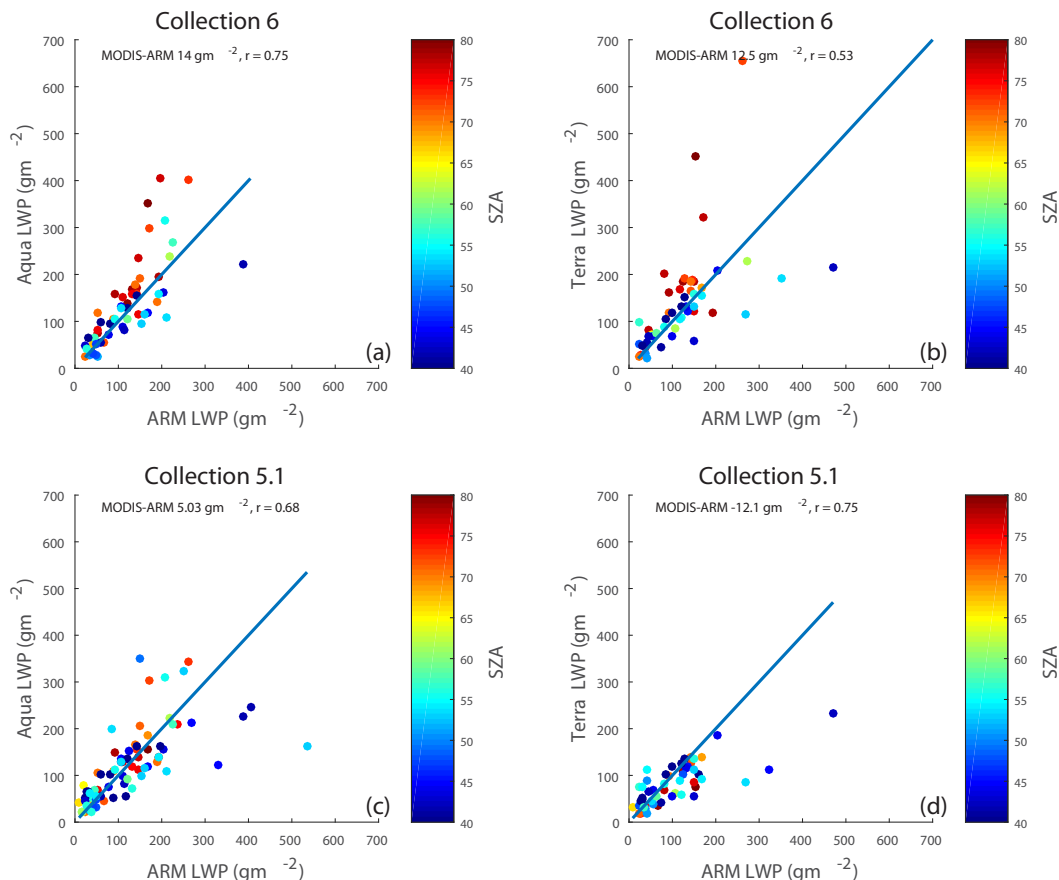


Figure 3. Scatterplots of MODIS liquid water path (LWP) versus ARM liquid water path. The two top subfigures contain data from the C6 dataset, while the bottom subfigures contain data C5.1. The colouring of the circles is according to solar zenith angle. The lines in the figures are 1 : 1 lines.

Table 5. Median and mean differences, standard deviations of the differences, correlation coefficients and p values between MODIS and ARM liquid water path (LWP).

LWP(MODIS)- LWP(ARM)	No. of samples	Median (mean) diff (g m^{-2})	SD diff (g m^{-2})	Median diff (%)	SD diff (%)	r	p
Aqua collection 6	56	14 (15.2)	60	12	52	0.75	0.00
Terra collection 6	53	12.5 (23.8)	110	10.4	95	0.53	0.00
Aqua collection 5.1	76	5.03 (−4.96)	73	4.56	66	0.68	0.00
Terra collection 5.1	51	−12.1 (−22.6)	58	−14.3	69	0.75	0.00

C5.1. Figure 3 and Table 5 contain the results for all satellite scenes that passed the selection criteria, while Table 6 contains the results for the satellite scenes that passed the selection criteria for both collections, i.e. can be compared directly.

As can be seen in Table 5, there were more cases selected from C5.1 than from C6 for the Aqua data; whereas, for Terra, a similar number of cases from both collections were selected. The satellites slightly overestimate LWP for C6 relative to the ground-based measurements with median differences less than 12 % (Table 5). For C5.1, Aqua marginally

overestimates LWP (4.56 %), whereas Terra shows an underestimate of 14.3 %. The Terra LWP underestimate may be due to a drift in the reflectance bands of the sensor which has been corrected for in C6 (Aisheng et al., 2013). The correlation coefficients are quite high for all but the Terra C6 datasets, and most cases are close to the 1 : 1 line when the LWP is below 200 g m^{-2} . For LWP values above 200 g m^{-2} , the scatter is large and there are a few more cases with high LWP in the C6 dataset. That the satellite and ground-based instruments are not viewing exactly the same clouds is most likely causing some of the scatter seen in Fig. 3.

Table 6. Median and mean differences, standard deviations of the differences, correlation coefficients and p values between nighttime MODIS and ARM liquid water path (LWP). Only scenes approved in both the collection 5.1 and collection 6 screening are included in the table.

LWP(MODIS)- LWP(ARM)	No. of samples	Median (mean) diff (g m^{-2})	SD diff (g m^{-2})	Median diff (%)	SD diff (%)	r	p
Aqua collection 6	50	12.1 (11.3)	57	10.6	50	0.75	0.00
Terra collection 6	37	3.4 (−4.28)	60	3.15	56	0.68	0.00
Aqua collection 5.1	50	−1.35 (−0.79)	48	−1.243	0.78	0.00	
Terra collection 5.1	37	−14.8 (−25.7)	54	−15.3	55	0.79	0.00

For C5.1, differences in LWP from satellite and ground-based measurements do not appear to be affected by SZA (Fig. 3). For C6, however, there does appear to be some influence with respect to SZA, with a possible bias towards a satellite overestimate at high SZA. A larger dataset is necessary to confirm if this is overestimation is systematic.

There are fewer LWP cases for the direct collection inter-comparison (Table 6). For Terra, 16 cases were classified as suitable in C6 but did not pass the selection criteria in C5, indicating that the changes in the algorithms made for C6 could have a significant impact. The change in the number of cases is likely a result of modifications in the cloud phase algorithm, changing how many pixels that are classified as liquid, but adjustments to the potential multilayer cloud flag and look-up tables will also affect which pixels pass the selection criteria. In general, the performance does improve when only cases where both collections pass the selection criteria (Table 6 compared to Table 5), except for the median difference in Terra C5.1 (the standard deviation does improve).

A previous study of LWP from MODIS C5 over China found that Terra and Aqua underestimated LWP by 43.3 and 33.6 g m^{-2} compared to ground-based measurements (Liu et al., 2013). These values are larger than those found in this study and may result from very dissimilar meteorological conditions of the investigation sites. NASA provides a product where the MODIS data are combined with CERES data to obtain a better understanding of the connection between longwave radiation and clouds (Minnis et al., 2011), and this too has been compared to ground-based measurements. However, the CERES team uses different cloud retrieval algorithms to the MODIS team. A study over China found an overestimate of 30.2 g m^{-2} for Terra CM (MODIS C5) LWP and an overestimate of 47.4 g m^{-2} for the Aqua dataset (Yan et al., 2015). Moreover, Dong et al. (2008) compared ARM measurements at a continental US site to CM data (MODIS C4) and found an overestimate by Terra (Aqua) LWP of 0.6 g m^{-2} (28.1 g m^{-2}). Over another ARM station, at the Azores, the CM (MODIS C5) LWP was underestimated by 13.5 g m^{-2} (Xi et al., 2014). All three studies have only investigated overcast low-level clouds. Compared to the previous studies the differences between the MODIS and ARM LWP in this study are quite low.

4 Conclusions

An ARM mobile facility was deployed in Hyytiälä, Finland, from February to September 2014 as part of the BAECC campaign and provided a suitable dataset for evaluating satellite cloud retrievals at high latitudes. Ground-based measurements of CTH, obtained from lidar and radar measurements, and LWP, from microwave radiometer measurements, are compared here to three satellite instruments: the MODIS instruments aboard Terra and Aqua; and the VIIRS instrument aboard the Suomi-NPP satellite.

There are no restrictions on CTH but the data are divided into single- and multiple layers according to the cloud mask derived from the ground-based measurements. For single-layer clouds, MODIS CTH is, on average, 14 % higher than ground-based measurements. For multilayer clouds, however, MODIS CTH is, on average, 5.8 % lower than ground-based measurements. Similar conclusions are made for the VIIRS inter-comparisons during nighttime; during daytime there were not enough data to make any general conclusions, partly a result of the high-latitude location. The MODIS IRW method frequently overestimates CTH for high-level clouds.

Single-layer cloud situations only were selected for the LWP inter-comparison. Two different versions of MODIS products were evaluated: collections C6 and C5.1. The LWP for C6 shows an overestimate, relative to the ground-based measurements, of 14 % (12.5 %) for Aqua (Terra). For C5.1, there is a slight overestimate of LWP (< 5 %) by the MODIS instrument aboard Aqua, while Terra's exhibits an underestimate of about 14 %. The underestimation by Terra in C5.1 is most likely caused by a known drift in the reflectance channels, which has been corrected for in C6. Good agreement is shown between satellite and ground-based data for LWP below 200 g m^{-2} , but there is less agreement for LWP above this value.

The overall performance of the satellite retrievals show small median biases when compared to the ground-based observations. There are however some cloud scenes for which the satellite retrievals do not work well. Situations where thin cirrus clouds are present over lower clouds seem to be extra problematic. This evaluation was performed at a high-latitude location to highlight any issues with large solar zenith angles, but there seemed to be little influence on the

cloud parameters investigated here. Additional evaluations of satellite cloud products performed across the globe will be necessary to draw more general conclusions regarding the performance of the investigated satellite cloud products.

5 Data availability

The data from the MODIS sensors were provided by the US National Aeronautics and Space Agency through the Level 1 and Atmosphere Archive Distribution System: doi:10.5067/MODIS/MOD06_L2.006 (Terra) doi:10.5067/MODIS/MYD06_L2.006 (Aqua). The VIIRS cloud data were provided by the SMHI. The LWP data from the ARM campaign were obtained from the ARM website, and the CTH data were obtained from the Cloudnet webpage (<http://www.cloud-net.org/>).

Acknowledgements. The deployment of AMF2 to Hyytiälä was enabled and supported by ARM. Argonne National Laboratory's work was supported by the U.S. Department of Energy, Assistant Secretary for Environmental Management, Office of Science and Technology, under contract DE-AC02-06CH11357. The authors gratefully acknowledge the support of AMF2 (Nicki Hickmon, Michael Ritsche and others), SMEAR-II (Janne Levula and others) and the BAEC community for their support in initiating the BAEC campaign, its implementation and operation.

This work was carried out with the support of the Lund Centre for studies of Carbon Cycle and Climate Interaction, LUCCI; the European Seventh Framework Programme, ACTRIS (EU INFRA-2010-1.1.16-262254), Aerosols, Clouds, and Trace gases; Research Infra Structure Network; the Strategic Research Program MERGE, Modeling the Regional and Global Earth System; and the Swedish Research Council (diary no: 2010-4683). We are also grateful for the support by the Swedish Research Council and from the Nordic Council of Ministers for the Nordic Top-level Research initiative CRAICC: Cryosphere–atmosphere interactions in a changing Arctic climate. This work was partly supported by the Office of Science (BER), U.S. Department of Energy via BAEC (Petäjä), European Commission via projects ACTRIS-TNA, ACTRIS2, BACCHUS, PEGASOS, and Academy of Finland Centre of Excellence (project number 272041).

Edited by: A. Kokhanovsky

Reviewed by: three anonymous referees

References

- Ackerman, T. P. and Stokes, G. M.: The Atmospheric Radiation Measurement Program, *Physics Today*, 56, 38–44, doi:10.1063/1.1554135, 2003.
- Aisheng, W., Xiaoxiong, X., Doelling, D. R., Morstad, D., Angal, A., and Bhatt, R.: Characterization of Terra and Aqua MODIS VIS, NIR, and SWIR Spectral Bands' Calibration Stability, *IEEE T. Geosci. Remote.*, 51, 4330–4338, doi:10.1109/tgrs.2012.2226588, 2013.
- Baum, B. A., Menzel, W. P., Frey, R. A., Tobin, D. C., Holz, R. E., Ackerman, S. A., Heidinger, A. K., and Yang, P.: MODIS Cloud-Top Property Refinements for Collection 6, *J. Appl. Meteorol. Clim.*, 51, 1145–1163, 2012.
- Cao, C., Xiong, J., Blonski, S., Liu, Q., Uprety, S., Shao, X., Bai, Y., and Weng, F.: Suomi NPP VIIRS sensor data record verification, validation, and long-term performance monitoring, *J. Geophys. Res.-Atmos.*, 118, 11664–11678, doi:10.1002/2013jd020418, 2013.
- Cess, R. D., Zhang, M. H., Zhou, Y., Jing, X., and Dvortsov, V.: Absorption of solar radiation by clouds: Interpretations of satellite, surface, and aircraft measurements, *J. Geophys. Res.-Atmos.*, 101, 23299–23309, 1996.
- Crewell, S. and Löhnert, U.: Accuracy of cloud liquid water path from ground-based microwave radiometry 2. Sensor accuracy and synergy, *Radio Science*, 38, 8042, doi:10.1029/2002rs002634, 2003.
- Dolinar, E. K., Dong, X. Q., Xi, B. K., Jiang, J. H., and Su, H.: Evaluation of CMIP5 simulated clouds and TOA radiation budgets using NASA satellite observations, *Clim. Dynam.*, 44, 2229–2247, 2015.
- Dong, X. Q., Minnis, P., Xi, B., Sun, S., and Chen, Y.: Comparison of CERES-MODIS stratus cloud properties with ground-based measurements at the DOE ARM southern great plains site, *J. Geophys. Res.-Atmos.*, 113, D03204, doi:10.1029/2007JD008438, 2008.
- Grosvenor, D. P. and Wood, R.: The effect of solar zenith angle on MODIS cloud optical and microphysical retrievals within marine liquid water clouds, *Atmos. Chem. Phys.*, 14, 7291–7321, doi:10.5194/acp-14-7291-2014, 2014.
- Hari, P. and Kulmala, M.: Station for Measuring Ecosystem–Atmosphere Relations (SMEAR II), *Boreal Environ. Res.*, 10, 315–322, 2005.
- Heymsfield, A. J., Matrosov, S., and Baum, B.: Ice Water Path–Optical Depth Relationships for Cirrus and Deep Stratiform Ice Cloud Layers, *J. Appl. Meteorol.*, 42, 1369–1390, doi:10.1175/1520-0450(2003)042<1369:IWPDRF>2.0.CO;2, 2003.
- Hogan, R. J., Mittermaier, M. P., and Illingworth, A. J.: The Retrieval of Ice Water Content from Radar Reflectivity Factor and Temperature and Its Use in Evaluating a Mesoscale Model, *J. Appl. Meteorol. Climatol.*, 45, 301–317, doi:10.1175/JAM2340.1, 2006.
- Holz, R. E., Ackerman, S. A., Nagle, F. W., Frey, R., Dutcher, S., Kuehn, R. E., Vaughan, M. A., and Baum, B.: Global Moderate Resolution Imaging Spectroradiometer (MODIS) cloud detection and height evaluation using CALIOP, *J. Geophys. Res.-Atmos.*, 113, D00A19, doi:10.1029/2008JD009837, 2008.
- Illingworth, A. J., Hogan, R. J., O'Connor, E. J., Bouniol, D., Brooks, M. E., Delanoë, J., Donovan, D. P., Eastment, J. D., Gaussiat, N., Goddard, J. W. F., Haefelin, M., Baltink, H. K., Krasnov, O. A., Pelon, J., Piriou, J. M., Protat, A., Russchenberg, H. W. J., Seifert, A., Tompkins, A. M., van Zadelhoff, G. J., Vinit, F., Willen, U., Wilson, D. R., and Wrench, C. L.: Cloudnet – Continuous evaluation of cloud profiles in seven operational models using ground-based observations, *B. Am. Meteorol. Soc.*, 88, 883–898, 2007.
- IPCC: Summary for Policymakers, in: *Climate Change 2013: The Physical Science Basis*, Contribution of Working Group I to the

- Fifth Assessment Report of the Intergovernmental Panel on Climate Change, edited by: Stocker, T. F., Qin, D., Plattner, G.-K., Tignor, M., Allen, S. K., Boschung, J., Nauels, A., Xia, Y., Bex, V., and Midgley, P. M., Cambridge University Press, Cambridge, United Kingdom and New York, NY, USA, 2013.
- King, M., Platnick, S., Hubanks, P., Arnold, G., Moody, E., Wind, G., and Wind, B.: Collection 005 change summary for the MODIS cloud optical property (06_OD) algorithm, available at: http://modis-atmos.gsfc.nasa.gov/C005_Changes/C005_CloudOpticalProperties_ver311.pdf, 2006.
- Liljegren, J. C.: Automatic self-calibration of ARM microwave radiometers, in: Microwave Radiometry and Remote Sensing of the Earth's Surface and Atmosphere, edited by: Pampaloni, P. and Paloscia, S., VSP Press, 433–443, 1999.
- Liu, J. J., Li, Z. Q., Zheng, Y. F., Chiu, J. C., Zhao, F. S., Cadeddu, M., Weng, F. Z., and Cribb, M.: Cloud optical and microphysical properties derived from ground-based and satellite sensors over a site in the Yangtze Delta region, *J. Geophys. Res.-Atmos.*, 118, 9141–9152, 2013.
- Mace, G. G., Zhang, Y., Platnick, S., King, M. D., Minnis, P., and Yang, P.: Evaluation of Cirrus Cloud Properties Derived from MODIS Data Using Cloud Properties Derived from Ground-Based Observations Collected at the ARM SGP Site, *J. Appl. Meteorol.*, 44, 221–240, doi:10.1175/jam2193.1, 2005.
- Maschwitz, G., Löhnert, U., Crewell, S., Rose, T., and Turner, D. D.: Investigation of ground-based microwave radiometer calibration techniques at 530 hPa, *Atmos. Meas. Tech.*, 6, 2641–2658, doi:10.5194/amt-6-2641-2013, 2013.
- Mather, J. H. and Voyles, J. W.: The Arm Climate Research Facility: A Review of Structure and Capabilities, *B. Am. Meteorol. Soc.*, 94, 377–392, doi:10.1175/bams-d-11-00218.1, 2012.
- Menzel, W. P., Frey, R. A., Zhang, H., Wylie, D. P., Moeller, C. C., Holz, R. E., Maddux, B., Baum, B. A., Strabala, K. I., and Gumley, L. E.: MODIS global cloud-top pressure and amount estimation: Algorithm description and results, *J. Appl. Meteorol. Clim.*, 47, 1175–1198, 2008.
- Minnis, P., Szedung, S.-M., Young, D. F., Heck, P. W., Garber, D. P., Yan, C., Spangenberg, D. A., Arduini, R. F., Trepte, Q. Z., Smith, W. L., Ayers, J. K., Gibson, S. C., Miller, W. F., Hong, G., Chakrapani, V., Takano, Y., Kuo-Nan, L., Yu, X., and Ping, Y.: CERES Edition-2 Cloud Property Retrievals Using TRMM VIRS and Terra and Aqua MODIS – Part I: Algorithms, *IEEE T. Geosci. Remote*, 49, 4374–4400, 10.1109/tgrs.2011.2144601, 2011.
- Naud, C., Muller, J.-P., and Clothiaux, E. E.: Comparison of cloud top heights derived from MISR stereo and MODIS CO₂-slicing, *Geophys. Res. Lett.*, 29, 42-41–42-44, doi:10.1029/2002gl015460, 2002.
- Naud, C., Muller, J. P., Haeffelin, M., Morille, Y., and Delaval, A.: Assessment of MISR and MODIS cloud top heights through inter-comparison with a back-scattering lidar at SIRTA, *Geophys. Res. Lett.*, 31, L04114, doi:10.1029/2003GL018976, 2004.
- Naud, C. M., Muller, J. P., Clothiaux, E. E., Baum, B. A., and Menzel, W. P.: Intercomparison of multiple years of MODIS, MISR and radar cloud-top heights, *Ann. Geophys.-Germany*, 23, 2415–2424, 2005.
- Petäjä, T.: Science Plan: Biogenic Aerosols – Effects on Clouds and Climate (BAECC), US Department of Energy, Office of Science, Office of Biological and Environmental Research, DOE/SC-ARM-13-024, 2013
- Petäjä, T., O'Connor, E. J., Moisseev, D., Sinclair, V. A., Manninen, A. J., Väänänen, R., von Lerber, A., Thornton, J. A., Nicoll, K., Petersen, W., Chandrasekar, V., Smith, J. N., Winkler, P. M., Hakola, H., Timonen, H., Brus, D., Laurila, T., Asmi, E., Riekkola, M.-L., Mona, L., Massoli, P., Engelmann, R., Komppula, M., Wang, J., Kuang, C., Bäck, J., Virtanen, A., Levula, J., Ritsche, M., and Hickmon, N.: A field campaign to elucidate the impact of Biogenic Aerosols on Clouds and Climate, *B. Am. Meteorol. Soc.*, doi:10.1175/BAMS-D-14-00199.1, online first, 2016.
- Platnick, S., King, M. D., Ackerman, S. A., Menzel, W. P., Baum, B. A., Riedi, J. C., and Frey, R. A.: The MODIS cloud products: Algorithms and examples from Terra, *IEEE T. Geosci. Remote*, 41, 459–473, doi:10.1109/Tgrs.2002.808301, 2003.
- Platnick, S., King, M. D., Meyer, K. G., Wind, G., Amarasinghe, N., Marchant, B., Arnold, G. T., Zhang, Z., Hubanks, P. A., Ridgway, B., and Riedi, J.: MODIS cloud optical properties: User guide for the Collection 6 Level-2 MOD06/MYD06 product and associated Level-3 Datasets, Version 0.9 (beta), 2014.
- SMHI: Scientific and Validation Report for the Cloud Product Processors of the NWC/PPS, 2015.
- Vant-Hull, B., Marshak, A., Remer, L. A., and Li, Z. Q.: The effects of scattering angle and cumulus cloud geometry on satellite retrievals of cloud droplet effective radius, *IEEE T. Geosci. Remote*, 45, 1039–1045, 2007.
- Wind, G., Platnick, S., King, M. D., Hubanks, P. A., Pavolonis, M. J., Heidinger, A. K., Yang, P., and Baum, B. A.: Multilayer Cloud Detection with the MODIS Near-Infrared Water Vapor Absorption Band, *J. Appl. Meteorol. Clim.*, 49, 2315–2333, 2010.
- Xi, B. K., Dong, X. Q., Minnis, P., and Sun-Mack, S.: Comparison of marine boundary layer cloud properties from CERES-MODIS Edition 4 and DOE ARM AMF measurements at the Azores, *J. Geophys. Res.-Atmos.*, 119, 9509–9529, 2014.
- Yan, H. R., Huang, J. P., Minnis, P., Yi, Y. H., Sun-Mack, S., Wang, T. H., and Nakajima, T. Y.: Comparison of CERES-MODIS cloud microphysical properties with surface observations over Loess Plateau, *J. Quant. Spectrosc. Ra.*, 153, 65–76, 2015.