



Development of the drop Freezing Ice Nuclei Counter (FINC), intercomparison of droplet freezing techniques, and use of soluble lignin as an atmospheric ice nucleation standard

Anna J. Miller^{1,*}, Killian P. Brennan^{2,*}, Claudia Mignani³, Jörg Wieder², Assaf Zipori⁴, Robert O. David⁵, and Nadine Borduas-Dedekind^{1,2}

¹Institute for Biogeochemistry and Pollutant Dynamics, ETH Zurich, Zurich, 8008 Switzerland

²Institute for Atmosphere and Climate Science, ETH Zurich, Zurich, 8092 Switzerland

³Department of Environmental Sciences, University of Basel, Basel, 4056 Switzerland

⁴Department of Earth and Planetary Sciences, Weizmann Institute of Science, Rehovot, 76100 Israel

⁵Department of Geosciences, University of Oslo, Oslo, 0315 Norway

*These authors contributed equally to this work.

Correspondence: Nadine Borduas-Dedekind (nadine.borduas@usys.ethz.ch, @nadineborduas)

Abstract. Aerosol-cloud interactions, including the ice nucleation of supercooled liquid water droplets caused by ice nucleating particles (INPs) and macromolecules (INMs), are a source of uncertainty in predicting future climate. Because of INPs' and INMs' spatial and temporal heterogeneity in source, number, and composition, predicting their concentration and distribution is a challenge, requiring apt analytical instrumentation. Here, we present the development of our drop Freezing Ice Nucleation Counter (FINC), a droplet freezing technique (DFT), for the quantification of INP and INM concentrations in the immersion freezing mode. FINC's design builds upon previous DFTs and uses an ethanol bath to cool sample aliquots while detecting freezing using a camera. Specifically, FINC uses 288 sample wells of 5 – 60 μL volume, has a limit of detection of -25.37 ± 0.15 $^{\circ}\text{C}$ with 5 μL , and has an instrument temperature uncertainty of ± 0.5 $^{\circ}\text{C}$. We further conducted freezing control experiments to quantify the non-homogeneous behavior of our developed DFT, including the consideration of eight different sources of contamination.

As part of the validation of FINC, an intercomparison campaign was conducted using an NX-illite suspension and an ambient aerosol sample with two other drop-freezing instruments: ETH's DRoplet Ice Nuclei Counter Zurich (DRINCZ) and University of Basel's LED-based ice nucleation detection apparatus (LINDA). We also tabulated an exhaustive list of peer-reviewed DFTs, to which we added our characterized and validated FINC.

In addition, we propose herein the use of a water-soluble biopolymer, lignin, as a suitable ice nucleating standard. An ideal INM standard should be inexpensive, accessible, reproducible, unaffected by sample preparation, and consistent across techniques. First, we show that commercial lignin has a consistent ice nucleating activity across product batches. Second, we demonstrate that aqueous lignin solutions exhibit good solution stability over time. Third, we compare its freezing temperature across different drop-freezing instruments, including on DRINCZ, LINDA, and on the Weizmann Institute's Supercooled Droplets Observation on a Microarray (WISDOM) and determine an empirical fit parameter for future drop freezing valida-



tions. With these findings, we aim to show that lignin can be used as a good immersion freezing standard in future technique intercomparisons in the field of atmospheric ice nucleation.

Copyright statement. TEXT

Contents

| | | |
|----|---|-----------|
| 25 | 1 Introduction | 3 |
| | 2 Instrument development | 5 |
| | 2.1 Building components | 5 |
| | 2.1.1 Hardware | 5 |
| | 2.1.2 PCR trays | 6 |
| 30 | 2.1.3 Bath leveler | 7 |
| | 2.2 Cooling rate | 7 |
| | 2.3 Freezing detection | 7 |
| | 2.4 Sample preparation | 8 |
| | 3 FINC's uncertainties | 9 |
| 35 | 3.1 Temperature uncertainty | 9 |
| | 3.2 Temperature spread across wells | 9 |
| | 3.3 FINC's limit of detection | 10 |
| | 4 Freezing control experiments | 10 |
| | 4.1 Non-homogeneous freezing in FINC | 10 |
| 40 | 4.2 Volume dependence on non-homogeneous freezing | 11 |
| | 4.3 Potential uncontrollable factors affecting non-homogeneous freezing | 11 |
| | 4.3.1 Effect of tray material | 11 |
| | 4.3.2 Effect of droplet shape | 11 |
| | 4.4 Potential controllable sources of contamination | 11 |
| 45 | 4.4.1 Effect of background water contamination | 11 |
| | 4.4.2 Effect of condensing water vapor | 12 |
| | 4.4.3 Effect of the surface area of the tray | 12 |
| | 4.4.4 Effect of air bubbles in the wells | 12 |
| | 4.4.5 Effect of contamination from the tray | 13 |



| | | | |
|----|----------|---|-----------|
| 50 | 4.4.6 | Effect of lab air contamination | 13 |
| | 4.5 | Volume of solution per well discussion and recommendation | 13 |
| | 4.6 | Freezing-point depression | 13 |
| | 5 | Drop freezing instrument intercomparison and validation of FINC | 14 |
| | 5.1 | Experimental details of DRINCZ and of LINDA | 14 |
| 55 | 5.2 | NX-illite intercomparison | 15 |
| | 5.3 | Ambient aerosol intercomparison | 16 |
| | 6 | Lignin as an ice nucleation standard | 17 |
| | 6.1 | Chemical composition of lignin | 17 |
| | 6.2 | Instrument intercomparison with lignin | 17 |
| 60 | 6.2.1 | Experimental details of WISDOM and of lignin solution preparation | 18 |
| | 6.2.2 | Intercomparison results and lignin's IN parameterization | 18 |
| | 6.3 | Lignin batch comparison | 19 |
| | 6.4 | Lignin solution stability | 19 |
| | 6.5 | Lignin's macromolecular size and reactivity | 20 |
| 65 | 7 | Conclusions | 21 |

1 Introduction

Aerosol-cloud interactions are a source of uncertainty in predicting future radiative forcing (IPCC, 2013). One important aerosol-cloud interaction is the ice nucleation of supercooled liquid water droplets caused by ice nuclei. Heterogeneous freezing can occur at temperatures as warm as $-1\text{ }^{\circ}\text{C}$ for bacteria *P. syringae* (Morris et al., 2004) and for other currently unidentified warm ice nucleating particles (INPs) (Lloyd et al., 2020). INPs typically include solid surfaces such as dust and cellular material which template ice, but recently reported ice nucleating macromolecules (INMs) are also capable of freezing supercooled water droplets (Pummer et al., 2012). INMs are defined here as operationally dissolved organic matter passing through a $0.2\text{ }\mu\text{L}$ filter (Borduas-Dedekind et al., 2019). In the absence of INPs and INMs, cloud droplets with an average radius of $10\text{ }\mu\text{m}$ remain liquid until instantaneous ($< 1\text{ s}$) homogeneous nucleation at approximately $-38\text{ }^{\circ}\text{C}$ (Kanji et al., 2017). The immersion freezing mode dominates heterogeneous freezing in mixed-phase clouds and occurs when an INP or an INM nucleates ice from within a supercooled water droplet (Storelvmo, 2017). Following ice nucleation, the ice crystal concentration in mixed-phase clouds can rapidly increase by secondary ice processes, affecting the ratio of liquid water to ice crystals. This ratio impacts cloud microphysics, and thus the lifetime, optical density, and radiative properties of clouds, thereby impacting the hydrological cycle and climate (Lohmann et al., 2016; Storelvmo, 2017; Zhao et al., 2019). Indeed, Heymsfield et al. (2020) recently reported that up to 77% of global surface precipitation originates from the ice phase. Thus, predicting INP and INM



concentrations and distributions to improve estimates of the ice crystal concentration in mixed-phase clouds will help reduce uncertainties in weather and climate projections.

This prediction is challenging due to the spatial and temporal heterogeneity in source, number, and composition of INPs and INMs. In order to reduce uncertainties, advanced methods are needed to quantify and characterize INPs and INMs from ambient and laboratory samples. A variety of laboratory instruments has been developed to measure INPs in the immersion freezing mode. Methods include continuous flow diffusion chambers (e.g., Rogers, 1988), single-particle levitation apparatuses (e.g., Diehl et al., 2014), and bench-top droplet freezing techniques (DFTs) (e.g., Hill et al., 2014). Bench-top methods vary by cooling method, droplet generation, droplet size, droplet number, and freezing detection method. Cooling methods typically use either a cold stage (e.g., Wright and Petters, 2013; O'Sullivan et al., 2014; Budke and Koop, 2015; Tobo, 2016; Chen et al., 2018b, a; Häusler et al., 2018; Mignani et al., 2019; Tarn et al., 2020), a block cooled with liquid refrigerant (e.g., Hill et al., 2014; Kunert et al., 2018; Steinke et al., 2019), or a liquid cooling bath (e.g., Stopelli et al., 2014; Beall et al., 2017; Chen et al., 2018b; David et al., 2019; Gute and Abbatt, 2020). Droplet generation includes micropipetting (e.g., Hill et al., 2014; Chen et al., 2018a; David et al., 2019), shaking a vial to make an emulsion (e.g., Pummer et al., 2012; Wright and Petters, 2013), piezo-driven droplet generation (e.g., Peckhaus et al., 2016), microfluidic flow-focusing droplet generation (e.g., Reicher et al., 2018; Brubaker et al., 2020; Tarn et al., 2020), or filled cavities on a chip (Häusler et al., 2018). Droplet sizes and numbers vary by generation method, where pipetting typically produces fewer microliter-sized drops and where microfluidic devices produce a larger number of nanoliter-sized droplets. Droplets can be placed either on plates coated in a hydrophobic substance such as petroleum jelly, or in plastic wells such as within a multi-well PCR tray. Freezing can be detected optically with manual visual inspection (e.g. Creamean et al., 2018; Hill et al., 2014), with software to detect freezing optically (e.g., Stopelli et al., 2014; David et al., 2019; Perkins et al., 2020; Gute and Abbatt, 2020), with pyroelectrics (e.g., Cook et al., 2020), or with infrared thermal detection (e.g., Zarogtas et al., 2016; Harrison et al., 2018). Each bench-top immersion freezing method has its advantages and disadvantages (Cziczo et al., 2017). Herein, we compiled a comprehensive summary of multi-drop bench-top immersion freezing instruments used for atmospheric ice nucleation measurements, provided in Section S1. As these types of instruments are not yet commercial, we also built our own drop Freezing Ice Nuclei Counter (FINC) using a cooling bath and an optical detection method. The advantage of FINC over existing similar methods is its automation of the ethanol level, its use of 288 wells to increase statistics, and its improved code for well detection and for harmonizing the output data.

With an increasing number of research groups developing DFTs, there is an ongoing search for suitable standards for freezing temperature intercomparisons. A typical standard used to compare immersion freezing instruments is the mineral dust NX-illite, a known ice active mineral and a cheap and readily available material (Hiranuma et al., 2015a). However, NX-illite measurements can differ by orders of magnitude across different instruments (Hiranuma et al., 2015a). This discrepancy may be due to NX-illite's insolubility in water, creating a suspension rather than a homogeneous solution. In practice, NX-illite suspensions settle quickly, potentially leading to a range of freezing temperatures. Cellulose has also been used as an inter-comparison standard (Hiranuma et al., 2019), as it is the most abundant biopolymer in the environment and can contribute to ice nucleation in clouds below about -21 °C (Hiranuma et al., 2015b). However, cellulose is also a suspension in water. Snomax® has additionally been used as a bacterial ice nuclei standard and consists of proteins from *P. syringae* (Wex et al.,



2015). Unfortunately, Polen et al. (2016) found that solutions of Snomax can have changing ice nucleating activity over time, making it a rather poor standard.

An alternative to mineral dust, cellulose, and Snomax is the use of a water-soluble organic material as a standard in immersion freezing experiments. Here, we show that commercial lignin, a complex organic polymer from the cell wall structure of vascular plants (Ciesielski et al., 2020), can serve as a reproducible standard for ice nucleation across different immersion freezing techniques. Indeed, lignin is a water-soluble macromolecule with an ice nucleating activity, thereby qualifying it as an INM (Pummer et al., 2015; Bogler and Borduas-Dedekind, 2020; Steinke et al., 2019). Furthermore, lignin and its oxidation products are abundant in the atmosphere, emitted for example during biomass burning and agricultural harvesting (Myers-Pigg et al., 2016; Shakya et al., 2011). Lignin is also produced as a by-product of the industrial kraft process, in which wood is converted to wood pulp and subsequently used for paper products (Harkin, 1969). Recent research has shown lignin to be ice active, albeit with colder freezing temperatures than leaf litter and agricultural dust (Steinke et al., 2019; Bogler and Borduas-Dedekind, 2020). Several other studies have shown that plant materials, which may have included lignin, can be ice active in immersion freezing (e.g., Conen et al., 2016; Felgitsch et al., 2018; Suski et al., 2018; Gute and Abbatt, 2020).

Herein, we present (1) the development, characterization and validation of our home-built FINC for the quantification of INP and INM concentrations in the immersion freezing mode, (2) the intercomparison of DFTs, and (3) the use of soluble lignin as an intercomparison standard. As part of our intercomparison study with lignin, we show results with three other drop-freezing instruments: ETH Zurich's DRoplet Ice Nuclei Counter Zurich (DRINCZ; David et al., 2019), University of Basel's LED-based Ice Nucleation Detection Apparatus (LINDA; Stopelli et al., 2014), and the Weizmann Institute's Supercooled Droplet Observation on a Microarray (WISDOM; Reicher et al., 2018). We conclude by recommending commercial lignin as a standard to validate DFTs based on a detailed analysis of lignin's reproducibility and stable IN activity.

2 Instrument development

2.1 Building components

2.1.1 Hardware

The hardware design of FINC is based on DRINCZ (David et al., 2019), on its predecessors (Stopelli et al., 2014; Hill et al., 2014), and on earlier descriptions of water droplets placed on oil-covered aluminum sheets over a cold plate, as described, for example in Vali and Stansbury (1966) and in Vali (1995). FINC has a temperature-controlled ethanol cooling bath (LAUDA Proline RP 845, Lauda-Königshofen) (Fig. 1a) in which a commercially available chip-on-board LED-array (50W COB Panel Light, Cooleeon Lighting Tech) is submerged 20 cm deep (Fig. 1b-1). A thin polytetrafluoroethylene sheet (Fig. 1b-2) acts as a diffuser mounted at a distance of 2 cm above the light source. A camera (IMX179 CMOS 8MP, ELP Free Driver) (Fig. 1b-3) mounted above the bath, images clear Piko™ PCR trays made of polypropylene (SPL0960, Thermo Fisher Scientific) (Fig. 1b-4) resting on the frame at the bath's surface. A level sensor (LLE102000, Honeywell) (Fig. 1b-5) measures the height of the ethanol in the bath and a peristaltic pump (KAS-S10-SE, Kamoer) (Fig. 1b-6) controlled by a micro-controller (Leonardo,

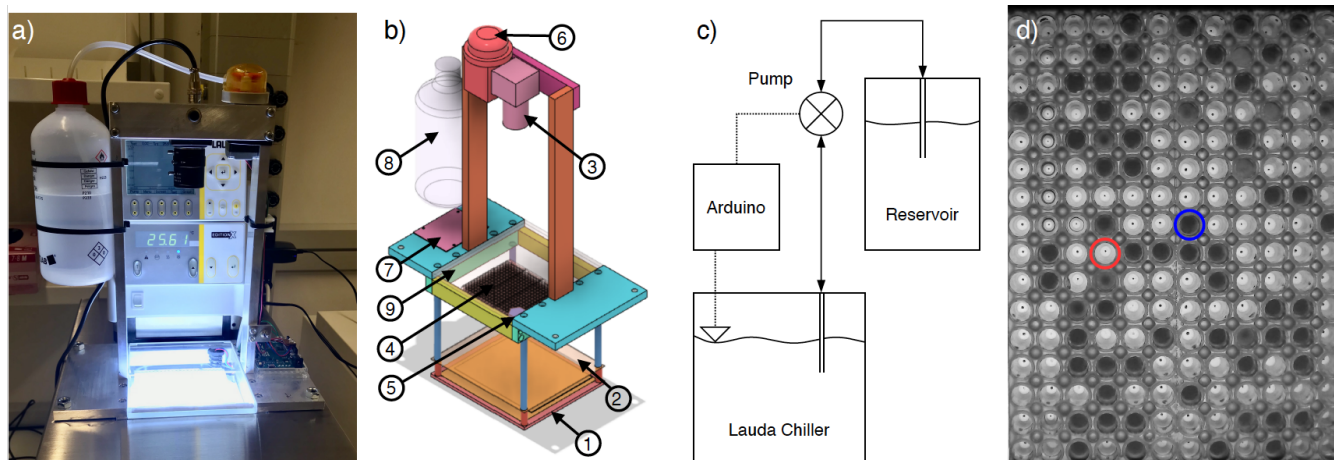


Figure 1. (a) Photograph of FINC. (b) Computer-aided design (CAD) software model of the aluminium and stainless steel movable structure placed inside the Lauda bath. The circled numbers correspond to the following parts: (1) a chip-on-board LED-array, (2) a thin polytetrafluoroethylene sheet, (3) a camera, (4) three clear polypropylene Piko™ PCR trays, (5) a level sensor, (6) a peristaltic pump, (7) an Arduino board and a stepper motor driver, (8) an ethanol reservoir, and (9) a Plexiglas plate. (c) Flow chart of the bath leveler setup. (d) Image of two of the three trays taken by the FINC camera showing the difference in light intensity between the liquid (circled in red) and frozen (circled in blue) wells used for freezing temperature detection.

Arduino®) (Fig. 1b-7) and powered by a stepper motor driver (TB6612, Adafruit) (Fig. 1b-7) moves ethanol between the Lauda chiller bath and the ethanol reservoir (Fig. 1b-8) (Fig. 1c). A transparent 6 mm thick polymethyl methacrylate (Plexiglas) plate (Fig. 1b-9) covers the Piko PCR trays to avoid contamination of the wells, to minimize evaporative loss of ethanol, and to limit condensation of water vapor into the ethanol (see Sect. 4.4.2). The components are mounted to a removable aluminium frame with stainless steel rods, recommended to avoid corrosion over time (Fig. 1a,b). Consumer grade hardware was used as building components where possible to reduce the overall instrument cost while ensuring measurement accuracy and reproducibility. The bulk of the building costs are constrained to the ethanol cooling bath. The per-measurement cost is dominated by laboratory consumables, such as the Piko PCR trays.

2.1.2 PCR trays

The use of Piko PCR trays in FINC is a unique feature in our tabulated list of DFTs (Sect. S1). Specifically, standard PCR trays contain 96 wells of 200 μL volume with dimensions of 127.76 mm by 85.34 mm, whereas the Piko PCR trays used in FINC contain 96 wells of 65 μL volume with dimensions of 80.55 mm by 26.75mm. The smaller dimensions allow for the use of up to four 96-well Piko PCR trays instead of one standard PCR tray, resulting in improved freezing temperature statistics per experiment. The trays are heated in an oven at 120 $^{\circ}\text{C}$ for at least an hour before use (see Sect. 2.4). In FINC, we use three Piko PCR trays to optimize the ethanol circulation and temperature spread across the 288 sample wells (see Sect. 3.2).



2.1.3 Bath leveler

An automated bath leveler system was built to account for the temperature dependence of the density of ethanol in FINC's cooling bath. For example, ethanol's density at 0 °C and at -25 °C is 806.7 g L⁻¹ and 826.3 g L⁻¹, respectively. This increase in density at lower temperatures consequently translates to a decrease in volume in the cooling bath and corresponds to a 4.9 mm decrease in height, equivalent to approximately 300 mL of ethanol, between 0 and -25 °C. In order to achieve reproducible measurements, it is crucial that the wells are constantly submerged at the same level throughout the measurement (David et al., 2019). In FINC, a constant ethanol level is maintained by adding and removing ethanol to the cooling bath via a peristaltic pump (Fig. 1c), thereby automating this process. The binary level sensor outputs either a submerged or emerged status signal to the micro-controller, which then turns the pump in the corresponding direction: either moving ethanol from the reservoir to the cooling bath during the experiment, or removing ethanol from the bath back to the reservoir during warm-up at the end of the experiment (Fig. 1c). The leveler does not need to be adjusted depending on the well volume used, as capillary action between the wells of the Piko PCR tray ensures that all wells are submerged in ethanol, as long as the ethanol reaches the bottom of the wells. In all, freezing measurements in FINC occur without manual intervention between measurements except for removing and placing new Piko PCR trays.

2.2 Cooling rate

The cooling bath temperature is controlled by a MATLAB® script, ramping down at -1 °C min⁻¹ while the script records an image every 0.2 °C. We prefer to record images as a function of temperature rather than as a function of time to ensure that all measurements have identical increments and can be easily averaged without interpolation. The cooling rate has been previously reported to have a negligible effect on immersion freezing temperatures (Wright et al., 2013), although much faster cooling can lead to temperature assignment uncertainties (Mason et al., 2015). Thus, we chose a cooling rate matching atmospheric updraft velocities and within the capacity of the Lauda bath's cooling mechanism.

2.3 Freezing detection

The freezing of the solutions inside the wells of the Piko PCR trays is detected by a change in light intensity passing through the wells. Light passes through liquid water, but is scattered by ice, resulting in dark pixels in the image (Fig. 1d). Once the images are recorded over the course of one experiment, a Circular Hough transform algorithm, described in David et al. (2019), is implemented to locate the wells on the images (Fig. S1). In case of failure of the automatic well detection, we also developed a filtered algorithm output to identify the well positions, as well as a manual well alignment grid, by selecting two wells in opposing corners. After determining the well positions, the average pixel intensity is calculated for each well per image. This data analysis generates an intensity profile as a function of temperature. Then, the greatest change in intensity is attributed to the freezing temperature and can be visualized as a temporal map (Fig. 2). For example, multiple changes in light intensity for one well over the course of an experiment or neighbouring wells all freezing at the same temperature can flag an error (for example an object in front of the camera), requiring manual deletion of some images or a rerun of the measurement. A color

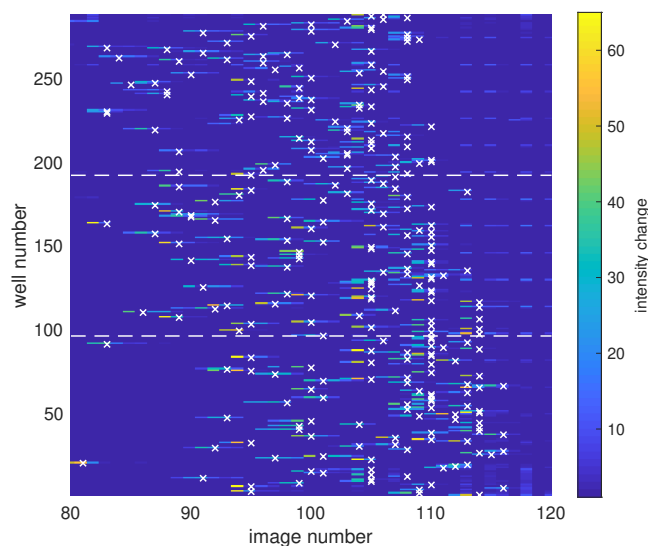


Figure 2. Map of the change in light intensity for each of the 288 wells (y-axis) as a function of the image number (x-axis), recorded every $0.2\text{ }^{\circ}\text{C}$ and corresponding to temperature decreasing and experimental time progressing. (The first 80 images corresponding to an interval of 16 degrees are excluded here for simplicity). The color scale represents the first derivative of the light intensity, with bright colors indicating a sudden drop in light intensity associated with freezing of the well. The algorithm assigns the freezing temperature of the well to the greatest change in light intensity and is marked by a white “x”. The dashed horizontal lines indicate the tray boundaries between the three Piko PCR trays.

195 map of the freezing temperature is also generated to visually inspect any well location bias (Fig. S2) (David et al., 2019). These data verification steps increase confidence in the measurement.

The data output of FINC is a vector containing the freezing temperature of each well. The vector is sorted by well column from top to bottom and left to right (see Fig. S1). In addition, a frozen fraction graph can be plotted by sorting the freezing temperature vector and plotting it versus a linearly spaced vector with values ascending from 0 to 1 in 288 steps (example in
200 Fig. S3). Based on the recommendation by Polen et al. (2018), the data is not trimmed, and all 288 freezing temperature data points are plotted. These data manipulations retain all information available from the experiment: freezing temperature and well location in one vector.

2.4 Sample preparation

Sample solutions were prepared within a laminar flow hood (Labculture Class II BioSafety Cabinet, ESCO) to reduce con-
205 tamination from lab air. All glassware were pre-rinsed three times with deionized water and with acetone and subsequently dried in an oven at $120\text{ }^{\circ}\text{C}$ for at least one hour. Sample solutions were then prepared using molecular biology-free reagent



water (W4502, Sigma Aldrich, hereafter referred to as background water). The solutions were then pipetted from sterile plastic reservoirs (10141-922, VWR) with an electronic multi-pipettor (4671040BT, Thermo Fisher Scientific, USA) into pre-cleaned Piko PCR trays (see Sect. 2.1.2). We recommend pipetting the solution volume in one dispensing volume to minimize the formation of bubbles (see 4.4.4). We found that these cleaning procedures significantly decreased the background IN activity of the background water (Fig. S3).

When transporting the Piko PCR trays from the laminar flow hood to FINC, we placed cover films (Z369667, Sigma Aldrich) over the trays to avoid contamination from ambient air. We removed the cover film before placing the trays inside the ethanol bath, in order to avoid problems with ethanol penetrating between the cover film and the Piko PCR tray by capillary effects. Furthermore, the plexiglass hinged-cover over the trays prevents contamination from the air depositing into the wells.

3 FINC's uncertainties

3.1 Temperature uncertainty

A temperature calibration is necessary to correct for the difference between the recorded temperature of the Lauda bath and the temperature within each well. This calibration was done using a multi-channel thermocouple data logger (HH-4208SD, Thermosense, UK), where each K-type thermocouple was placed inside a well filled with ethanol, with nine thermocouples evenly spaced across the three trays. With the probes inside the wells, the bath temperature was ramped down to $-30\text{ }^{\circ}\text{C}$ at a rate of $-1\text{ }^{\circ}\text{C min}^{-1}$. The temperature of each thermocouple was recorded every 10 seconds (T_{well}) and was plotted against the bath temperature recorded by the Lauda system (T_{bath}), as shown for one calibration experiment in Figure S4. We then obtained the following calibration equation (Eq. 1), where the slope and intercept are averaged values across three independent calibration experiments:

$$T_{\text{well,avg}} = 0.95 * T_{\text{bath}} + 0.75 \quad (1)$$

Multiple temperature calibrations conducted several months apart and by multiple users led to identical slopes, confirming reproducible temperature gradients and constant ethanol circulation inside the bath. The mean of the standard deviations of the nine evenly-spaced thermocouples across three Piko PCR trays was $0.5\text{ }^{\circ}\text{C}$ for temperatures down to $-25\text{ }^{\circ}\text{C}$ (Table S1). We therefore report the temperature uncertainty for each well to be $\pm 0.5\text{ }^{\circ}\text{C}$.

3.2 Temperature spread across wells

Furthermore, we tested different numbers of Piko PCR trays as well as different bath pump speeds, to reduce the temperature bias across the three trays within an experiment (Sect. S4, Table S1). Tests with four trays led to the identification of a vortex in the upper left corner of the ethanol bath, yielding higher temperature biases across the trays (Table S1). Overall, we determined that using three trays, placed on the right to avoid the vortex, as well as pump speed setting 8, resulted in the smallest temperature biases of $\pm 0.46\text{ }^{\circ}\text{C}$ between -10 and $-15\text{ }^{\circ}\text{C}$ and of $\pm 0.55\text{ }^{\circ}\text{C}$ between -20 and $-25\text{ }^{\circ}\text{C}$ (Table S1, last row entry).



Since the average of these values is precisely $0.5\text{ }^{\circ}\text{C}$, we consider that this value is equal to temperature uncertainty described in Section 3.1.

3.3 FINC's limit of detection

240 It is necessary to accurately characterize the background of the instrument to determine the lowest trustworthy freezing temperature of a sample. FINC's limit of detection (LOD) for the freezing control experiments (Sect. 4) was calculated as the mean of ten replicates of background water experiments using $5\text{ }\mu\text{L}$ (Fig. S5). We calculated the mean temperature and one standard deviations (a spread of $1\ \sigma$) for each of the 288 values, resulting in an LOD T_{50} of $-25.37 \pm 0.15\text{ }^{\circ}\text{C}$. We note that a value of $\pm 3\ \sigma$ can also be used and would lead to a similar background T_{50} of $-25.37 \pm 0.44\text{ }^{\circ}\text{C}$ (Fig. S5). Furthermore, we show the
245 LOD as a boxplot of the mean frozen fraction (Fig. S5). The LOD depends on the experiment type, but as long as the appropriate background characterizations are measured, e.g. artificial salt water, background water, water through a laboratory setup, etc., the instrument can be used to measure freezing temperatures of 288 wells at a time (see Sect. 4.5 for further discussion).

4 Freezing control experiments

To test the capabilities of FINC and to characterize its sources of uncertainties, we conducted several freezing control experiments. We considered (1) the non-homogeneous freezing of the background water (Sect. 4.1 and Sect. 4.2), (2) the roles of tray
250 material and of droplet share (Sect. 4.3), (3) eight different sources of contamination (Sect. 4.4), (4) the choice of well volume (Sect. 4.5), and (5) the freezing-point depression of a dissolved organic matter solution with different salt concentrations (Sect. 4.6).

4.1 Non-homogeneous freezing in FINC

255 The use of Piko PCR trays allows for a range of sample volumes between $5 - 60\text{ }\mu\text{L}$ to be measured on FINC. Theoretically, freezing rates of water droplets are dependent on the volume of the droplet; smaller droplets freeze at lower temperatures (O and Wood, 2016). Classical nucleation theory approximates interfacial tension between ice and water, activation energy of the phase transfer, and size of clusters and embryos (Ickes et al., 2015). In the atmosphere, 50% of a droplet population of $5\text{ }\mu\text{L}$ -volume is predicted to freeze spontaneously ($< 1\text{ s}$) and thus homogeneously at $-31.81\text{ }^{\circ}\text{C}$, whereas $60\text{ }\mu\text{L}$ -volume is predicted to freeze
260 at $-31.41\text{ }^{\circ}\text{C}$ (equations from Wang (2013)). However, these temperatures were never reached during FINC experiments with background water. Over the range of possible sample volumes in FINC ($5-60\text{ }\mu\text{L}$), the mean T_{50} value of background water was $-24.53 \pm 0.83\text{ }^{\circ}\text{C}$. As argued in the following sections, the difference in temperatures between atmospheric homogeneous freezing and background water freezing in FINC is likely due to a combination of tray material (Sect. 4.3.1), of non-spherical droplet shapes within the wells (Sect. 4.3.2), and of different sources of contamination (Sect.4.4).



265 4.2 Volume dependence on non-homogeneous freezing

We further attempted to quantify these uncertainties by comparing the T_{50} values of background water over a range of background water volumes. The mean T_{50} background water values in FINC were -25.37 ± 0.08 °C, -24.65 ± 0.13 °C, -23.40 ± 0.58 °C, -24.54 °C, -24.43 ± 0.19 °C, -25.23 °C, and -25.27 ± 0.09 °C for 5 μL , 10 μL , 20 μL , 30 μL , 40 μL , 50 μL , and 60 μL , respectively, across one to five replicates (Table S2; Fig. S6). Furthermore, if we collect all the freezing temperatures from
270 different volumes described in Sect. 4.1 and convert the data into INPs per volume, we observed a large spread in the freezing behaviour of the water (Fig. S7). Through both these data analyses, we observe that experiments with 20 μL of background water freezes warmer and with a larger spread than all other volumes. In Sections 4.3 and 4.4, we investigate and discuss the potential sources of contamination involved in creating a volume-dependent non-homogeneous freezing temperature as well as attempt to reason the unpredictable behavior of the 20 μL freezing experiments.

275 4.3 Potential uncontrollable factors affecting non-homogeneous freezing

4.3.1 Effect of tray material

As described in detail in Li et al. (2012) and in Polen et al. (2018), the material interacting with the supercooled water droplets impacts their freezing. Indeed, the Piko PCR trays used in FINC are made of polypropylene and are therefore a hydrophobic surface. Interestingly, hydrophobic surfaces have previously been observed to freeze at a warmer temperature than a hydrophilic
280 surfaces (Li et al., 2012). It is likely that the material of the tray is contributing to warmer temperatures than expected for homogeneous freezing, but it is difficult to quantify the extent or percentage of this contribution to the overall non-homogeneous freezing behavior. It remains that imperfections on the surface of each well could also induce non-homogeneous freezing behavior (Diao et al., 2011), and that the use of a larger number of wells could help provide reliable statistics.

4.3.2 Effect of droplet shape

285 Due to the narrow width of the Piko PCR tray wells, the water in FINC's wells is subjected to capillary forces. Indeed, a concave meniscus is evident when examining the solution in the Piko PCR trays, thereby exerting negative pressure on the solution. It has been previously shown that the homogeneous nucleation rate of water can be significantly increased when water is subjected to negative pressure (Marcolli, 2017, 2020). However, the negative pressure associated with the radius of the meniscus in the Piko wells is on the order of 1-3 mm (see Table S3 and Fig. S10) and are likely negligible to participate in
290 non-homogeneous freezing in FINC (Marcolli, 2017, 2020).

4.4 Potential controllable sources of contamination

4.4.1 Effect of background water contamination

The background water is a contentious issue in the field of atmospheric ice nucleation. An excellent overview of the challenges of "cleaning up our water" is described in Polen et al. (2018). Upon their recommendation, we experimented with different types



295 of purified water and found that the molecular biology-free reagent water (i.e. background water) gave the most reproducible measurements, consistent with David et al. (2019). Filtration of the background water through a 0.02 μm filter led to no difference in freezing behavior for the background water, except for our lab's Milli-Q water which is known to contain higher levels of organic carbon (Fig. S7). We therefore validated our choice of background water used without further purification.

4.4.2 Effect of condensing water vapor

300 We considered the possibility of water vapor condensing into the wells from the air between the plexiglass and the trays during a measurement (Fig. S9). We calculated a maximum amount of condensable water vapor, or in other words, a worst case scenario, where if the volume of water vapour corresponding to 90% RH at 0 $^{\circ}\text{C}$ between the plexiglass and the trays were to condense into liquid water inside a well. We arrived at a value of 2 nL (Sect. S8). This volume is small and unlikely to be able to condense into one well, freeze on a colder wall and trigger nucleation within the well. We therefore conclude that this
305 condensation process has a negligible effect on the well volume and thus on freezing temperatures.

4.4.3 Effect of the surface area of the tray

We considered whether a difference in surface area to volume ratio could explain the different T_{50} values observed for different volumes depicted in Figure S6 (see Sect. S9 for the calculations of surface areas of the wells). In particular, we hypothesized that the warmer freezing of the 20 μL could be due to the cone-like shape of the well (see shape diagram in Fig. S10). However,
310 the surface area to volume ratios of the different volumes shown in Figure S11 could not explain the variability or higher freezing temperatures observed, particularly with 20 μL . Note that the water vapor condensation is inconsequential to changing the surface area to volume ratio (Sect. 4.4.2). Our running hypothesis to the peculiar higher freezing of the 20 μL experiments is the presence of microscopic bubbles (Sect. 4.4.4).

4.4.4 Effect of air bubbles in the wells

315 Air bubbles in the solutions within a well can be generated during the pipetting process, particularly if the solution mixture has surfactant-like properties (see example image in Fig. S12). Bubbles are defined here as visible pockets of air in the well. This problem is likely the result of a combination of trapped air in the narrow wells during dispensing. Wells containing bubbles in FINC (Fig. S12) froze at warmer temperatures (Fig. S13). When the bubbles collapsed within the well they may be creating a spike of pressure in the well and the required increase in tension to contain the water led to a spike in negative pressure. This
320 negative pressure spike could induce freezing at warmer temperatures than would otherwise occur (Marcolli, 2017). Therefore, bubbles must be avoided by careful introduction of the solution into the well. Since bubbles associated with pipetting can be seen in the images, we can confirm the absence of bubbles in all images used for the data plotted in Figure S6. As no visible bubbles were present, then this potential effect is unlikely to explain the observed non-homogeneous freezing behavior for different well volumes. Nevertheless, microscopic bubbles invisible to the human eye and to the camera could be affecting the
325 non-homogeneous freezing, including for the 20 μL volumes, but to an unknown degree.



4.4.5 Effect of contamination from the tray

A series of experiments were conducted to test the leaching of potential ice-active material from the Piko PCR trays into the background water. To test this hypothesis, we placed 60 μL of background water into one tray and then pipetted 50 μL of the water out of each well and into another tray. If leaching was indeed a problem, we would have observed higher freezing
330 temperatures in the tray containing the transferred solution. However, we found no effect to freezing from leaching over duplicate sets of experiments (Fig. S14). We conclude that material leaching from the Piko PCR trays is not a problem.

4.4.6 Effect of lab air contamination

As discussed by Whale et al. (2015) and by Stopelli et al. (2014), the concept of an open droplet system can be prone to further contamination from the surrounding air. We have built upon the authors' recommendations by using a laminar flow hood, by
335 placing a cover film on the top of the Piko PCR tray between the flowhood and FINC, and by having a plexiglass cover on FINC to minimize deposition of airborne contaminants. Furthermore, we calculated the surface area of the solution exposed to air, but observed no trend related to the non-homogeneous freezing behavior for different well volumes (see Table S3).

4.5 Volume of solution per well discussion and recommendation

Based on Sections 4.1, 4.2, 4.3 and 4.4, it remains difficult to quantify the contribution of each possible source of contamination
340 to non-homogeneous freezing. This difficulty appears to be a combination of uncontrollable (Sect. 4.3) and controllable factors (Sect. 4.4), and has been previously addressed in Polen et al. (2018). Nevertheless, the pre-treatment of the trays (see Fig. S3), the use of a laminar flow hood, and the use of molecular biology-free reagent water allowed for reproducible background water measurements. In all, the recommended well volume while working with FINC depends on the research question. One
345 should use a larger volume to study active, but less abundant, INPs and INMs, whereas one should use a smaller volume to study less active, but more abundant, INPs and INMs. If the samples have high concentrations of salts leading to freezing point depression, for instance, then a larger volume might be necessary to remain in the operating range of the Lauda bath.

4.6 Freezing-point depression

Inorganic salts have a freezing-point depression effect on water's freezing temperature. The effect is described in general by the relationship in Eq. 2, commonly known as Blagden's Law:

$$350 \quad \Delta T_f = K_f * b_b \quad (2)$$

where ΔT_f is the freezing-point depression, K_f is the cryoscopic constant of the solvent ($K_{f,\text{water}} = 1.86 \text{ K kg mol}^{-1}$), and b_b is the molality of the solute (Atkins and de Paula, 2011). To further characterize FINC, we tested the ice nucleation activity of solutions of 20 mg C L^{-1} dissolved organic matter (DOM) from Jericho Ditch, part of the Great Dismal Swamp in Suffolk, Virginia, USA (sample collection reported in Borduas-Dedekind et al., 2019) and of sodium chloride (NaCl; 31434, Sigma
355 Aldrich). Jericho Ditch DOM is ice active, with a T_{50} value of $-10.6 \pm 0.0 \text{ }^\circ\text{C}$ (Fig. 3), and is therefore a suitable sample for



360 technique (Fig. 3).

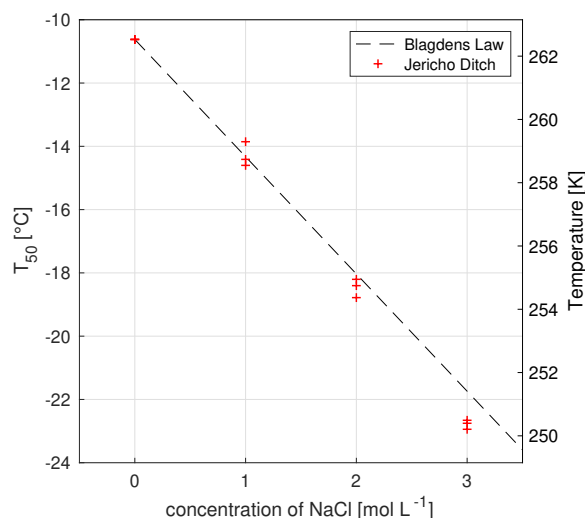


Figure 3. The freezing-point depression effect of solutions of 20 mg C L⁻¹ solution of Jericho Ditch dissolved organic matter with increasing concentrations of sodium chloride (NaCl). The x-axis represents the concentration (mol L⁻¹) of NaCl, and the y-axis represents the T_{50} values, where 50% of the wells were frozen. Triplicate experiments were done for each of the concentrations of 0, 1, 2, and 3 M NaCl, marked with red crosses. Note that the T_{50} values for the experiments at 0 mol L⁻¹ are identical and thus overlap. Experimental data was compared to Blagden's Law (grey dashed line), which describes the freezing-point depression phenomenon. All temperature measurements have an uncertainty of ± 0.5 °C.

5 Drop freezing instrument intercomparison and validation of FINC

To validate FINC against other similar and peer-reviewed DFTs, we conducted an intercomparison study with ETH's DRINCZ (David et al., 2019) and University of Basel's LINDA (Stopelli et al., 2014) (Sect. 5.1). Here, we report the comparison measurements using NX-illite (Sect. 5.2) and an ambient aerosol sample (Sect. 5.3).

365 5.1 Experimental details of DRINCZ and of LINDA

DRINCZ was operated using a freshly shaken sample poured into a sterile reservoir. Then, 96 droplets of 50 μ L were transferred into a 96-well PCR polypropylene tray (732-2386, VWR, USA) using an 8-channel multi-pipette. The tray was sealed with a transparent foil and immediately analyzed with DRINCZ as described in David et al. (2019). LINDA was operated using



a total of 5.2 mL per experiment and each sample was shaken by hand and immediately pipetted under a laminar flow hood (AURA Mini, EuroClone) into 52 microtubes (0.5 mL Eppendorf Safe-Lock Tubes) using a repeater pipette (Stepper TM 411, Socorex) and bioproof syringes (Ecostep TM, sterilized, single wrapped, bioproof, range: 50 – 500 μ L). Each droplet contained 100 μ L of the sample solution, and was measured with LINDA, according to Stopelli et al. (2014).

5.2 NX-illite intercomparison

NX-illite has been repeatedly used as a standard to compare ice nucleation instruments (e.g., Hiranuma et al., 2015a). Commercial NX-illite solutions of 0.01, 0.005, and 0.001 %wt (or 0.1, 0.05, and 0.01 g of NX-illite per 1 L of water, respectively) were measured by FINC, DRINCZ, and LINDA during an intercomparison experiment day on July 11, 2019 (Fig. 4a). The three instruments measured the same suspension; one suspension of each concentration was split into several sterile Falcon tubes (14-432-22, Thermo Fisher Scientific, USA). The Falcon tubes were shaken immediately prior to pipetting, and the filled PCR trays were not left to sit more than a few minutes prior to the freezing experiment. We calculated, according to Eq. 3 (Vali, 1971, 2019), the ice active surface-site density ($n_{s,BET}$), where BET stands for the Brunauer–Emmett–Teller technique, a commonly used technique to measure particle surface areas (Brunauer et al., 1938):

$$n_{s,BET} [\text{m}^{-2}] = -\frac{\ln[1 - \text{FF}(T)]}{S_{A,BET} * C_{\text{illite}} * V_{\text{well}}} \quad (3)$$

where $\text{FF}(T)$ is the frozen fraction at each freezing temperature, $S_{A,BET}$ is the BET-determined surface area of the NX-illite particles ($124.4 \text{ m}^2 \text{ g}^{-1}$), C_{illite} is the mass concentration of NX-illite, and V_{well} is the volume in each well ($V_{\text{well}} = 30 \mu\text{L}$ for FINC, $50 \mu\text{L}$ for DRINCZ, and $100 \mu\text{L}$ for LINDA). We additionally compare these measurements with NX-illite solutions measured on DRINCZ in 2018 (David et al., 2019), as well as with the parameterization from Hiranuma et al. (2015a) (Fig. 4a).

The FINC measurement spread at $-15 \text{ }^\circ\text{C}$ is from $68 - 209 \text{ m}^{-2}$, and grows to $2600 - 9200 \text{ m}^{-2}$ at $-20 \text{ }^\circ\text{C}$. The Hiranuma et al. (2015a) parameterization fits well within the FINC measurements above $-17 \text{ }^\circ\text{C}$, and deviates up to a factor of 4.8 at $-21 \text{ }^\circ\text{C}$. Between FINC, DRINCZ, and LINDA, the spread was a factor 6 at $-15 \text{ }^\circ\text{C}$ and a factor 7.5 at $-20 \text{ }^\circ\text{C}$. The DRINCZ measurements from David et al. (2019) are up to one order of magnitude higher than those reported here (Fig. 4a). Indeed, the spread of $n_{s,BET}$ is a common outcome of NX-illite suspensions (e.g. David et al., 2019; Harrison et al., 2018; Beall et al., 2017). We hypothesize that this spread is due to the heterogeneity of the suspensions; the NX-illite particles can settle and sediment to the bottom of the wells, reducing the available surface area to nucleate ice. Furthermore, sedimentation increases with concentration, consistent with the observation of lower $n_{s,BET}$ values at higher concentrations (Fig. 4a). To further test this hypothesis, we retested the 0.1 g L^{-1} solution on FINC eight months later, and found that the $n_{s,BET}$ values had decreased by approximately a factor of 5 at $-20 \text{ }^\circ\text{C}$ (Fig. 4a, sample FINC Retest in blue). This change in $n_{s,BET}$ values suggests that NX-illite suspensions are not stable over time, consistent with mineral dust experiments demonstrating ion exchange abilities in solution over time (Kumar et al., 2019). Nevertheless, the results of this intercomparison with NX-illite supports the validation of FINC as a suitable instrument for quantifying ice nucleating activity in the immersion freezing mode, yet strengthens our proposal for a more solution-stable standard.

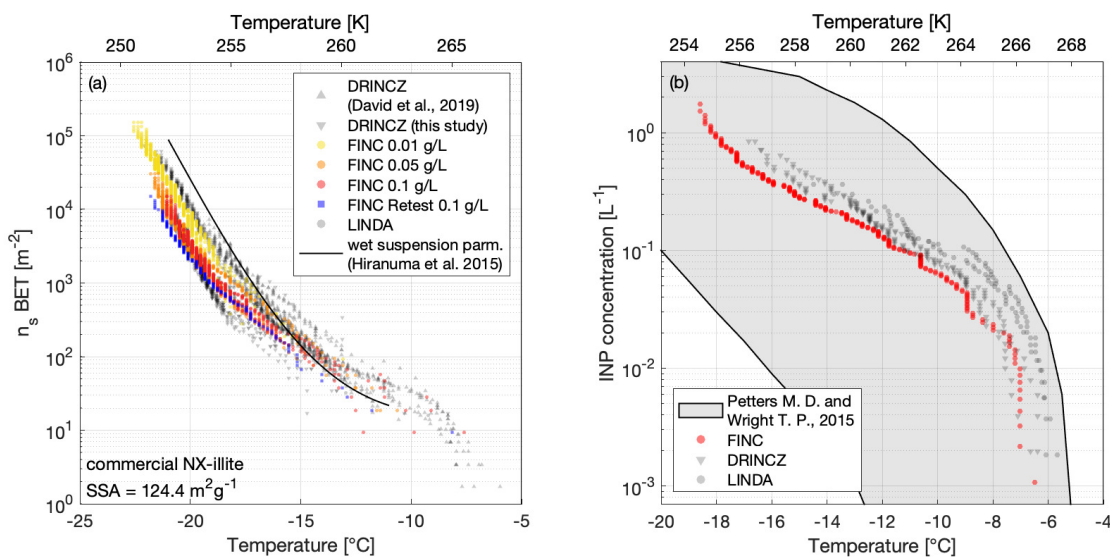


Figure 4. (a) The active surface-site density $n_{s,BET}$ of NX-illite suspensions measured on FINC (yellow, orange, red dots), DRINCZ (grey downward triangles), and LINDA (grey dots) during the intercomparison. The wet suspension parameterization by Hiranuma et al. (2015a) is plotted for reference. Concentrations used were 0.1, 0.05, and 0.01 g L^{-1} of NX-illite. The DRINCZ illite measurements as reported in David et al. (2019) are also shown for comparison (grey upwards triangles). $n_{s,BET}$ was calculated using a BET surface area of 124.4 m^2g^{-1} (Hiranuma et al., 2015a). (b) INP concentrations (L^{-1}) of an ambient aerosol sample solution from Zurich, Switzerland, measured on FINC (red dots), DRINCZ (grey triangles), and LINDA (grey dots). Ambient aerosols were collected with a Coriolis μ impinger for 20 minutes at 300 L min^{-1} . The sample was split for measurements on each of the immersion freezing instruments. The grey shaded area denotes the range of INP concentrations from precipitation and cloud water samples compiled by Petters and Wright (2015). All FINC temperature measurements have an uncertainty of ± 0.5 °C.

5.3 Ambient aerosol intercomparison

Next, we measured the INP concentration of an ambient aerosol sample during the intercomparison study with DRINCZ and LINDA. Ambient aerosols were collected with a Coriolis μ air sampler (Bertin Technologies, France), an instrument designed for outdoor monitoring of bio-aerosols such as pollen and spores (Gómez-Domenech et al., 2010; Carvalho et al., 2008). The sample was collected for $t_{aq} = 20$ minutes at a flow rate of $Q = 300$ L min^{-1} on July 10, 2019 on the terrace of the Institute for Atmospheric and Climate Science at ETH Zurich, in Switzerland. The initial sample volume $v = 15$ mL was further diluted with a dilution factor of $DF = 3.7$ to obtain enough volume to split into sterile Falcon tubes and brought to FINC, DRINCZ, and LINDA for measurement the following day. The INP concentration per mL water sampled was first calculated (Eq. 4):

$$410 \quad \text{INP}[\text{mL}_{\text{water}}^{-1}] = -\frac{\ln[1 - \text{FF}(T)]}{V_{\text{well}}} \quad (4)$$



INPs per mL water were then converted to INP concentration per L of air, using the sample flow rate (Q), the volume of water sampled (v), the time sampled (t_{aq}), and the dilution factor (DF), as in Eq. 5:

$$\text{INP}[\text{L}_{\text{air}}^{-1}] = \text{INP}[\text{mL}_{\text{water}}^{-1}] * \frac{DF * v}{t_{aq} * Q} \quad (5)$$

415 The INP concentration in the aerosol sample as a function of temperature agreed well between the instruments, with the advantage of FINC being able to achieve lower temperature measurements than DRINCZ and LINDA due to the smaller well volume (Fig. 4b) (Sect. 4.5). The measurements also fit within the range of INP concentrations per L of air from cloud water and precipitation samples, compiled by Petters and Wright (2015). These results further validate the capabilities of FINC as a DFT.

6 Lignin as an ice nucleation standard

420 We describe here the use of commercial and water-soluble lignin as a standard for intercomparing droplet freezing techniques (DFT). Its applicability is demonstrated through the intercomparison measurements of lignin with four different DFTs (Sect. 6.2), the comparison of different batches of a commercial lignin products (Sect. 6.3), the stability of lignin solutions over time (Sect. 6.4), and the recalcitrance of lignin towards chemical and atmospheric processing (Sect. 6.5).

6.1 Chemical composition of lignin

425 Lignin is a high molecular weight natural polymer accounting for approximately 30% of the organic carbon present in the biosphere (Boerjan et al., 2003). It is composed of three different types of hydroxycinnamyl alcohol monomers referred to as monolignols, such as para-coumaryl alcohol, coniferyl alcohol and sinapyl alcohol (Faraji et al., 2018) (Fig. 5). The relative amount of monolignols within the lignin polymer vary depending on taxa, cell type and cell layers, as well as on the development stage of the tree, the climate and the habitat (Boerjan et al., 2003). The polymerisation of monolignols occurs through
430 a stepwise chemically-controlled process linking ether bonds (β -O-4, α -O-4) and carbon-carbon bonds (Ralph et al., 2019). Lignin indeed constitutes a mixture of monolignols but specifically represents repeating units of known chemical functional groups such as oxygen-substituted arenes, conjugated double bonds and alcohols. The commercial lignin used in this work is a by-product of the pulp and paper industry and has therefore a highly reproducible chemical composition, necessary for a standard. Section 6.3 confirms this reproducibility specifically for ice nucleation. We further acknowledge that this commercial
435 lignin contains a thiol group, which differs from atmospheric relevant monolignols, but is rather meant as a soluble and cheap standard for the intercomparison of DFTs.

6.2 Instrument intercomparison with lignin

To demonstrate the use of lignin as a standard for immersion freezing, we compared measurements between FINC, DRINCZ, LINDA, and the Weizmann Institute's microfluidic immersion freezing device (WISDOM; Reicher et al., 2018).

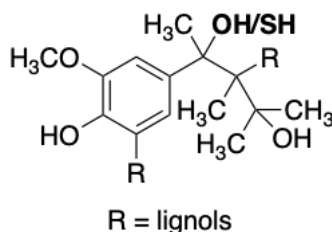


Figure 5. Example of the chemical structure of a lignin monomer, known as a lignol. The commercial kraft lignin material used in this work has a thiol group in the benzylic position instead of an alcohol group (highlighted in bold).

440 6.2.1 Experimental details of WISDOM and of lignin solution preparation

Measurements with WISDOM were made according to the protocol by Reicher et al. (2018), described briefly herein. Prior to analysis, the refrigerated lignin sample was mixed by vortex, and 1 mL of the sample was taken with a syringe. The solution was injected into a microfluidic chip using a pneumatic pump (NE-500 Programmable OEM Syringe Pump) to create 100 μ m drops in diameter. Then, the chip was placed under an optical microscope, on a cooling stage (Linkam LTS420, cooling rate of 1 $^{\circ}$ C
445 min $^{-1}$), and a CCD camera recorded freezing events. More information regarding temperature calibration, drops generation and a detailed description of WISDOM can be found in Reicher et al. (2018).

The measurements on FINC, DRINCZ, and LINDA were conducted on the same day with identical lignin solutions. Specifically, a solution of 20 mg C L $^{-1}$ lignin (of Batch 1, see Sect. 6.3) diluted in background water was divided into sterile Falcon tubes and brought to each instrument. The lignin solution for the WISDOM experiments was from the same batch of lignin but
450 from a different solution of 20 mg CL $^{-1}$ and was made in Switzerland and transported at room temperature to Israel.

6.2.2 Intercomparison results and lignin's IN parameterization

We calculated the ice-active mass site density, n_m values, for each measurement according to Eq. 6 and analogous to Eq. 3, also following from Vali (1971, 2019):

$$n_m[\text{mg}^{-1}] = -\frac{\ln[1 - \text{FF}(T)]}{\text{TOC} * V_{\text{well}}} \quad (6)$$

455 where TOC is the total organic carbon of the solution, and V_{well} is the volume inside each well (V_{well} is 30 μ L for FINC during the intercomparison study, 5 μ L for FINC during batch experiments, 50 μ L for DRINCZ, 100 μ L for LINDA, and 1 nL for WISDOM). TOC values were determined using the mass of lignin measured and the vendor's description of carbon content (50.13%) and further validated using a Shimadzu TOC analyzer with the prior pre-treatment addition of nitric and sulfuric acids.

460 The lignin freezing experiments compared remarkably well between FINC, DRINCZ, and LINDA, with overlapping n_m traces, falling well within an order of magnitude (Fig. 6a). The WISDOM measurements, albeit with lower freezing temperatures consistent with its use of nanoliter droplets (Reicher et al., 2018), nicely extended the n_m values from the drop freezing



techniques to -37.0 °C. Moreover, we fitted the data to arrive at a parameterization for lignin's ice nucleating ability, shown as the dashed line in Figure 6a and is represented in Eq. 7, where T is temperature in °C:

$$465 \quad n_m = \exp(-0.47 * T - 1.2) \quad (7)$$

Note that this parameterization is specifically valid for lignin solutions of 20 mg C L^{-1} . In fact, lignin is a macromolecule suggested to adopt different solution aggregation properties depending on its concentration (Bogler and Borduas-Dedekind, 2020), and thus our parameterization is specifically for concentrations of 20 mg C L^{-1} , equivalent to 40 mg of lignin per L. The n_m parameterization by Wilson et al. (2015) of sea-surface microlayer organic matter is included for reference (Fig. 6a). While
470 the slope is similar for both parameterizations (Fig. 6a), the Wilson parameterization is 2 orders of magnitude higher. Lignin is not the most active INM in the sea surface microlayer, in sea spray, or in bioaerosols (Steinke et al., 2019), and so we were therefore surprised to notice the similarity in slope. However, organic matter n_m data from several other studies are inconsistent with this slope, highlighting the difficulties in predicting the ice nucleating ability of organic matter (Borduas-Dedekind et al., 2019; Pummer et al., 2015; O'Sullivan et al., 2014; McCluskey et al., 2017).

475 6.3 Lignin batch comparison

An important quality of a suitable ice nucleation standard is its ability to be reproducible across commercial product batches. The lignin used here is alkali low-sulfonate kraft lignin (471003, Sigma Aldrich). We tested the ice nucleating ability of three different batches of this product: batch numbers 04414PE, MKCL2371, and MKCK3344 (hereafter referred to as Batch 1, 2, and 3, respectively). Specifications of their production dates and their carbon and sulfur contents are provided in Table S4.
480 The n_m values, determined according to Eq. 6, of Batch 2 and 3 had excellent overlap with each other (Fig. 6b). The values of Batch 1 overlapped with the other batches below -19 °C, but above -19 °C had fewer ice active mass site densities (Fig. 6b). Still, all batches were well within one order of magnitude and matched the parameterization. These results indicate that lignin's ice nucleating activity is reproducible across different production batches.

6.4 Lignin solution stability

485 In addition to reproducibility across product batches, another important quality of a standard is its stability in solution over time towards ice nucleation. Therefore, we performed multiple FINC experiments of the same 20 mg C L^{-1} solution of lignin (using Batch 2) over four months and found no change in ice nucleating activity (Fig. 7), unlike for NX-illite (see Sect. 5.2 and Fig. 4). The solutions retained their T_{50} values over time within the temperature uncertainty of the instrument of ± 0.5 °C. We additionally performed several freezing experiments on a more concentrated solution of 200 mg C L^{-1} lignin (using Batch 2),
490 and also found no significant change in ice nucleating activity over 2 weeks (Fig. S15). Furthermore, we tested the effect of the storage temperature of the lignin solution: in the fridge or on the lab bench and found no difference (Fig. S16). This solution stability makes lignin an advantageous ice nucleation standard over NX-illite and Snomax.

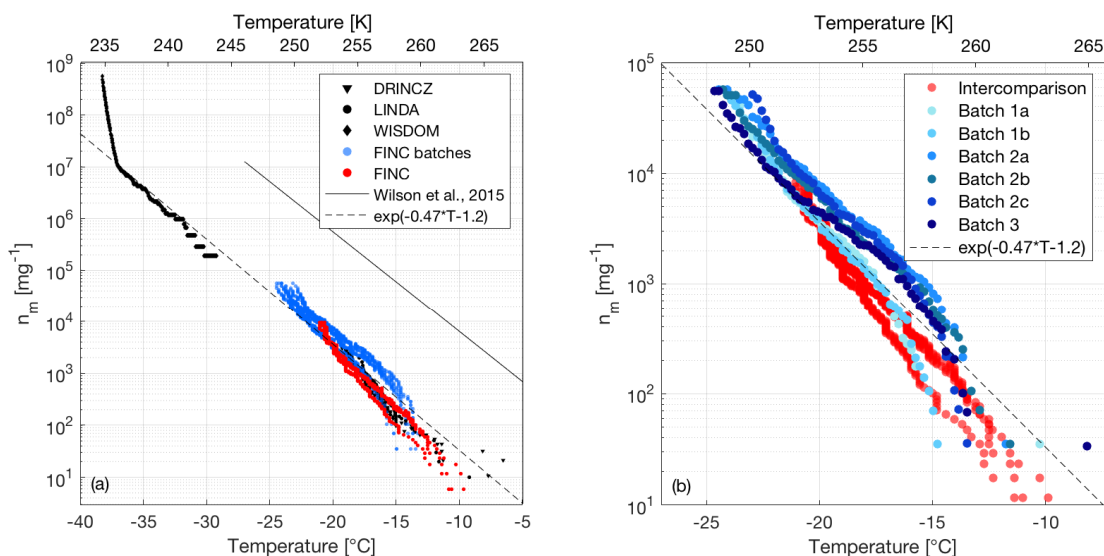


Figure 6. (a) Ice active mass site density (n_m) of lignin measured by FINC at 30 μL volume (red dots), FINC at 5 μL (blue dots, see panel (b) for detailed measurements based on batch), DRINCZ at 50 μL volume (grey triangles), LINDA at 100 μL volume (grey dots), and WISDOM at 1 nL volume (grey diamonds). The dashed line is a parameterization of these data ($\exp(-0.49 * T - 2)$), specifically at lignin solutions of 20 mg C L^{-1} . The parameterization of the sea-surface microlayer organic matter from Wilson et al. (2015) is also shown. (b) Inset of panel (a), showing the ice-active mass site density n_m of three batches (Batch 1 (yellow markers), Batch 2 (blue markers), and Batch 3 (red markers)) of the same product number of lignin purchased from Sigma Aldrich in one to three replicates. All batch experiments were done with 5 μL well volume. The FINC measurements of lignin (of Batch 1) during the intercomparison study, using 30 μL (light pink) were also included. All FINC temperature measurements have an uncertainty of ± 0.5 $^{\circ}\text{C}$.

6.5 Lignin's macromolecular size and reactivity

Lignin's recalcitrance towards atmospheric processing has recently been demonstrated by Bogler and Borduas-Dedekind (2020). Indeed, photochemical exposure, ozonation, heating, sonication and hydrogen peroxide treatments had negligible effects on lignin's ice nucleation ability. Note also that the lignin recommended herein is soluble; accordingly, it passed through a 0.22 μm filter without loss of ice activity, but lost some activity after filtering to 0.02 μm (Bogler and Borduas-Dedekind, 2020). Lignin could therefore be termed a nano-INP (O'Sullivan et al., 2015), as an INM (Pummer et al., 2015) and operationally defined as soluble (Borduas-Dedekind et al., 2019). The ability of lignin to be chemically recalcitrant further demonstrates its value as a standard.

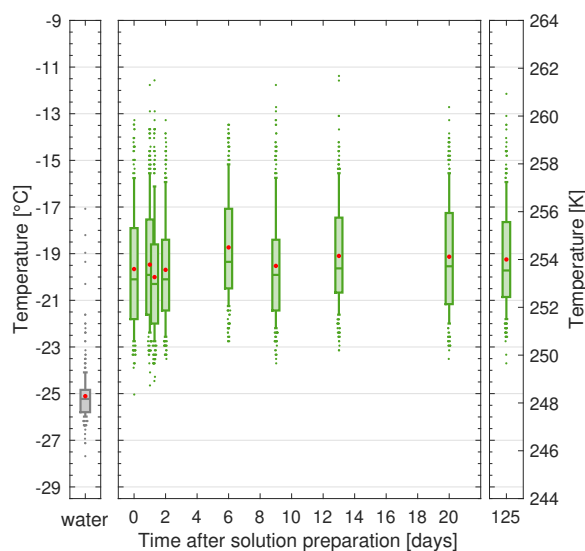


Figure 7. The solution stability of a 20 mg C L^{-1} lignin solution (Batch 2) over 125 days, stored in the fridge in the dark. Each boxplot represents the frozen temperatures of 288 wells, where the middle line is the median (T_{50}), the outer edges of the box are the 25th and 75th percentiles, the whiskers extend to the 10th and 90th percentiles, and the red dot is the mean. The water boxplot represented the background water solution. Duplicates were taken on Day 1 (overlapping boxplots). All temperature measurements have an uncertainty of $\pm 0.5 \text{ }^\circ\text{C}$.

7 Conclusions

We describe herein our home-built drop Freezing Ice Nuclei Counter (FINC) to measure the ice nucleating ability of INPs and INMs in the immersion freezing mode. FINC is a complimentary instrument now added to the growing list droplet freezing techniques (see compiled list in the SI). Its capabilities include (1) measuring simultaneously 3 trays of 96 wells each, (2) supercooling to $T_{50} = -25.37 \pm 0.15$ with a $5 \text{ } \mu\text{L}$ volume, (3) automatic controls for running the experiments, and (4) having a temperature uncertainty of $\pm 0.5 \text{ }^\circ\text{C}$. We further explored eight different possible explanations to non-homogeneous freezing observed in FINC and other DFTs. As part of the development and validation of FINC, we intercompared measurements with NX-illite suspensions and an ambient aerosol sample collected in Zurich with other DFTs, specifically with DRINCZ and LINDA. Additionally, we present evidence for the use of soluble lignin as a reproducible, reliable and commercial intercomparison standard in future ice nucleation studies in immersion freezing. Indeed, we demonstrated that solutions of 20 mg C L^{-1} measured on FINC, DRINCZ, LINDA, and WISDOM yielded a particularly narrow spread of n_m values between -5 and $-38 \text{ }^\circ\text{C}$. We subsequently fitted a parameterization ($n_m = \exp(-0.47 * T - 1.2)$) through our empirical data for further use in intercomparison and validation studies. Finally, we show that lignin solutions are stable over several months and their ice nucleating activity is well reproduced across different batches of the same product, making lignin an advantageous solution standard compared to NX-illite.



Code and data availability. Data sets for all data presented in figures in the text are deposited in the ETH Research Collection data repository at <https://doi.org/10.3929/ethz-b-000438875>. Necessary code for running experiments on FINC is also available upon request.

Author contributions. K.P.B. and N.B.D. designed the instrument. K.P.B. wrote the code to operate the instrument. A.J.M. validated the instrument. A.J.M., K.P.B, C.M., J.W., and A.Z. acquired data during the intercomparisons; N.B.D., A.J.M. and K.P.B. wrote the manuscript
520 with contributions from all authors.

Competing interests. The authors declare no competing interests.

Acknowledgements. We acknowledge the technical help of Marco Vecellio and Michael Rösch for advice, ordering hardware and machining structural instrument components. We also acknowledge the assistance of Max Aragon Cerecedes during the intercomparison experiment day. We thank Sophie Bogler for help with the tray washing experiments and Silvan Müller for help with the TOC analyzer. We are thankful
525 to Paul DeMott and Tom Hill for the reviewing our compiled list of droplet freezing techniques.



References

- Atkins, P. and de Paula, J.: Physical Chemistry for the Life Sciences, OUP Oxford, 2011.
- Beall, C. M., Stokes, M. D., Hill, T. C., DeMott, P. J., DeWald, J. T., and Prather, K. A.: Automation and Heat Transfer Characterization of Immersion Mode Spectroscopy for Analysis of Ice Nucleating Particles, *Atmos. Meas. Tech.*, 10, 2613–2626, <https://doi.org/10.5194/amt-10-2613-2017>, 2017.
- Boerjan, W., Ralph, J., and Baucher, M.: Lignin Biosynthesis, *Annual Review of Plant Biology*, 54, 519–546, <https://doi.org/10.1146/annurev.arplant.54.031902.134938>, 2003.
- Bogler, S. and Borduas-Dedekind, N.: Lignin’s Ability to Nucleate Ice via Immersion Freezing and Its Stability towards Physicochemical Treatments and Atmospheric Processing, *Atmos. Chem. Phys. Discuss.*, p. 22, <https://doi.org/10.5194/acp-2020-589>, 2020.
- 535 Borduas-Dedekind, N., Ossola, R., David, R. O., Boynton, L. S., Weichlinger, V., Kanji, Z. A., and McNeill, K.: Photomineralization Mechanism Changes the Ability of Dissolved Organic Matter to Activate Cloud Droplets and to Nucleate Ice Crystals, *Atmos. Chem. Phys.*, 19, 12 397–12 412, <https://doi.org/10.5194/acp-19-12397-2019>, 2019.
- Brubaker, T., Polen, M., Cheng, P., Ekambaram, V., Somers, J., Anna, S. L., and Sullivan, R. C.: Development and Characterization of a “Store and Create” Microfluidic Device to Determine the Heterogeneous Freezing Properties of Ice Nucleating Particles, *Aerosol. Sci. Technol.*, 54, 79–93, <https://doi.org/10.1080/02786826.2019.1679349>, 2020.
- 540 Brunauer, S., Emmett, P. H., and Teller, E.: Adsorption of Gases in Multimolecular Layers, *J. Am. Chem. Soc.*, 60, 309–319, <https://doi.org/10.1021/ja01269a023>, 1938.
- Budke, C. and Koop, T.: BINARY: An Optical Freezing Array for Assessing Temperature and Time Dependence of Heterogeneous Ice Nucleation, *Atmos. Meas. Tech.*, 8, 689–703, <https://doi.org/10.5194/amt-8-689-2015>, 2015.
- 545 Carvalho, E., Sindt, C., Verdier, A., Galan, C., O’Donoghue, L., Parks, S., and Thibaudon, M.: Performance of the Coriolis Air Sampler, a High-Volume Aerosol-Collection System for Quantification of Airborne Spores and Pollen Grains, *Aerobiologia*, 24, 191–201, <https://doi.org/10.1007/s10453-008-9098-y>, 2008.
- Chen, J., Pei, X., Wang, H., Chen, J., Zhu, Y., Tang, M., and Wu, Z.: Development, Characterization, and Validation of a Cold Stage-Based Ice Nucleation Array (PKU-INA), *Atmosphere*, 9, 357, <https://doi.org/10.3390/atmos9090357>, 2018a.
- 550 Chen, J., Wu, Z., Augustin-Bauditz, S., Grawe, S., Hartmann, M., Pei, X., Liu, Z., Ji, D., and Wex, H.: Ice-Nucleating Particle Concentrations Unaffected by Urban Air Pollution in Beijing, China, *Atmos. Chem. Phys.*, 18, 3523–3539, <https://doi.org/10.5194/acp-18-3523-2018>, 2018b.
- Ciesielski, P. N., Pecha, M. B., Lattanzi, A. M., Bharadwaj, V. S., Crowley, M. F., Bu, L., Vermaas, J. V., Steirer, K. X., and Crowley, M. F.: Advances in Multiscale Modeling of Lignocellulosic Biomass, *ACS Sustainable Chem. Eng.*, 8, 3512–3531, <https://doi.org/10.1021/acssuschemeng.9b07415>, 2020.
- 555 Conen, F., Stopelli, E., and Zimmermann, L.: Clues That Decaying Leaves Enrich Arctic Air with Ice Nucleating Particles, *Atmos. Environ.*, 129, 91–94, <https://doi.org/10.1016/j.atmosenv.2016.01.027>, 2016.
- Cook, F., Lord, R., Sitbon, G., Stephens, A., Rust, A., and Schwarzacher, W.: A Pyroelectric Thermal Sensor for Automated Ice Nucleation Detection, *Atmos. Meas. Tech. Discuss.*, pp. 1–17, <https://doi.org/10.5194/amt-2019-401>, 2020.
- 560 Creamean, J. M., Primm, K. M., Tolbert, M. A., Hall, E. G., Wendell, J., Jordan, A., Sheridan, P. J., Smith, J., and Schnell, R. C.: HOVERCAT: A Novel Aerial System for Evaluation of Aerosol–Cloud Interactions, *Atmos. Meas. Tech.*, 11, 3969–3985, <https://doi.org/10.5194/amt-11-3969-2018>, 2018.



- Cziczko, D. J., Ladino, L., Boose, Y., Kanji, Z. A., Kupiszewski, P., Lance, S., Mertes, S., and Wex, H.: Measurements of Ice Nucleating Particles and Ice Residuals, *Meteor. Monogr.*, 58, 8.1–8.13, <https://doi.org/10.1175/AMSMONOGRAPHS-D-16-0008.1>, 2017.
- 565 David, R. O., Cascajo-Castresana, M., Brennan, K. P., Rösch, M., Els, N., Werz, J., Weichlinger, V., Boynton, L. S., Bogler, S., Borduas-Dedekind, N., Marcolli, C., and Kanji, Z. A.: Development of the DRoplet Ice Nuclei Counter Zurich (DRINCZ): Validation and Application to Field-Collected Snow Samples, *Atmos. Meas. Tech.*, 12, 6865–6888, <https://doi.org/10.5194/amt-12-6865-2019>, 2019.
- Diao, Y., Myerson, A. S., Hatton, T. A., and Trout, B. L.: Surface Design for Controlled Crystallization: The Role of Surface Chemistry and Nanoscale Pores in Heterogeneous Nucleation, *Langmuir*, 27, 5324–5334, <https://doi.org/10.1021/la104351k>, 2011.
- 570 Diehl, K., Debertshäuser, M., Eppers, O., Schmithüsen, H., Mitra, S. K., and Borrmann, S.: Particle Surface Area Dependence of Mineral Dust in Immersion Freezing Mode: Investigations with Freely Suspended Drops in an Acoustic Levitator and a Vertical Wind Tunnel, *Atmos. Chem. Phys.*, 14, 12 343–12 355, <https://doi.org/10.5194/acp-14-12343-2014>, 2014.
- Faraji, M., Fonseca, L. L., Escamilla-Treviño, L., Barros-Rios, J., Engle, N., Yang, Z. K., Tschapinski, T. J., Dixon, R. A., and Voit, E. O.: Mathematical Models of Lignin Biosynthesis, *Biotechnology for Biofuels*, 11, 34, <https://doi.org/10.1186/s13068-018-1028-9>, 2018.
- 575 Felgitsch, L., Baloh, P., Burkart, J., Mayr, M., Momken, M. E., Seifried, T. M., Winkler, P., Schmale III, D. G., and Grothe, H.: Birch Leaves and Branches as a Source of Ice-Nucleating Macromolecules, *Atmos. Chem. Phys.*, 18, 16 063–16 079, <https://doi.org/10.5194/acp-18-16063-2018>, 2018.
- Gómez-Domenech, M., García-Mozo, H., Alcázar, P., Brandao, R., Caeiro, E., Munhoz, V., and Galán, C.: Evaluation of the Efficiency of the Coriolis Air Sampler for Pollen Detection in South Europe, *Aerobiologia*, 26, 149–155, <https://doi.org/10.1007/s10453-009-9152-4>,
580 2010.
- Gute, E. and Abbatt, J. P. D.: Ice Nucleating Behavior of Different Tree Pollen in the Immersion Mode, *Atmos. Environ.*, 231, 117 488, <https://doi.org/10.1016/j.atmosenv.2020.117488>, 2020.
- Harkin, J. M.: Lignin and Its Uses, Research Note FPL-0206, U.S. Department of Agriculture, Forest Service, Forest Products, Laboratory, Madison, Wisconsin, 1969.
- 585 Harrison, A. D., Whale, T. F., Rutledge, R., Lamb, S., Tarn, M. D., Porter, G. C. E., Adams, M. P., McQuaid, J. B., Morris, G. J., and Murray, B. J.: An Instrument for Quantifying Heterogeneous Ice Nucleation in Multiwell Plates Using Infrared Emissions to Detect Freezing, *Atmos. Meas. Tech.*, 11, 5629–5641, <https://doi.org/10.5194/amt-11-5629-2018>, 2018.
- Häusler, T., Witek, L., Felgitsch, L., Hitzenberger, R., and Grothe, H.: Freezing on a Chip—A New Approach to Determine Heterogeneous Ice Nucleation of Micrometer-Sized Water Droplets, *Atmosphere*, 9, 140, <https://doi.org/10.3390/atmos9040140>, 2018.
- 590 Heymsfield, A. J., Schmitt, C., Chen, C.-C.-J., Bansemmer, A., Gettelman, A., Field, P. R., and Liu, C.: Contributions of the Liquid and Ice Phases to Global Surface Precipitation: Observations and Global Climate Modeling, *J. Atmos. Sci.*, 77, 2629–2648, <https://doi.org/10.1175/JAS-D-19-0352.1>, 2020.
- Hill, T. C. J., Moffett, B. F., DeMott, P. J., Georgakopoulos, D. G., Stump, W. L., and Franc, G. D.: Measurement of Ice Nucleation-Active Bacteria on Plants and in Precipitation by Quantitative PCR, *Appl. Environ. Microbiol.*, 80, 1256–1267,
595 <https://doi.org/10.1128/AEM.02967-13>, 2014.
- Hiranuma, N., Augustin-Bauditz, S., Bingemer, H., Budke, C., Curtius, J., Danielczok, A., Diehl, K., Dreischmeier, K., Ebert, M., Frank, F., Hoffmann, N., Kandler, K., Kiselev, A., Koop, T., Leisner, T., Möhler, O., Nillius, B., Peckhaus, A., Rose, D., Weinbruch, S., Wex, H., Boose, Y., DeMott, P. J., Hader, J. D., Hill, T. C. J., Kanji, Z. A., Kulkarni, G., Levin, E. J. T., McCluskey, C. S., Murakami, M., Murray, B. J., Niedermeier, D., Petters, M. D., O’Sullivan, D., Saito, A., Schill, G. P., Tajiri, T., Tolbert, M. A., Welti, A., Whale, T. F., Wright,



- 600 T. P., and Yamashita, K.: A Comprehensive Laboratory Study on the Immersion Freezing Behavior of Illite NX Particles: A Comparison of 17 Ice Nucleation Measurement Techniques, *Atmos. Chem. Phys.*, 15, 2489–2518, <https://doi.org/10.5194/acp-15-2489-2015>, 2015a.
- Hiranuma, N., Möhler, O., Yamashita, K., Tajiri, T., Saito, A., Kiselev, A., Hoffmann, N., Hoose, C., Jantsch, E., Koop, T., and Murakami, M.: Ice Nucleation by Cellulose and Its Potential Contribution to Ice Formation in Clouds, *Nat. Geosci.*, 8, 273–277, <https://doi.org/10.1038/ngeo2374>, 2015b.
- 605 Hiranuma, N., Adachi, K., Bell, D. M., Belosi, F., Beydoun, H., Bhaduri, B., Bingemer, H., Budke, C., Clemen, H.-C., Conen, F., Cory, K. M., Curtius, J., DeMott, P. J., Eppers, O., Grawe, S., Hartmann, S., Hoffmann, N., Höhler, K., Jantsch, E., Kiselev, A., Koop, T., Kulkarni, G., Mayer, A., Murakami, M., Murray, B. J., Nicosia, A., Petters, M. D., Piazza, M., Polen, M., Reicher, N., Rudich, Y., Saito, A., Santachiara, G., Schiebel, T., Schill, G. P., Schneider, J., Segev, L., Stopelli, E., Sullivan, R. C., Suski, K., Szakáll, M., Tajiri, T., Taylor, H., Tobo, Y., Ullrich, R., Weber, D., Wex, H., Whale, T. F., Whiteside, C. L., Yamashita, K., Zelenyuk, A., and Möhler, O.: A
610 Comprehensive Characterization of Ice Nucleation by Three Different Types of Cellulose Particles Immersed in Water, *Atmos. Chem. Phys.*, 19, 4823–4849, <https://doi.org/10.5194/acp-19-4823-2019>, 2019.
- Ickes, L., Welti, A., Hoose, C., and Lohmann, U.: Classical Nucleation Theory of Homogeneous Freezing of Water: Thermodynamic and Kinetic Parameters, *Phys. Chem. Chem. Phys.*, 17, 5514–5537, <https://doi.org/10.1039/C4CP04184D>, 2015.
- IPCC: Climate Change 2013: The Physical Science Basis. Contribution of Working Group I to the Fifth Assessment Report of the Intergov-
615 ernmental Panel on Climate Change., Cambridge University Press, Cambridge, United Kingdom and New York, NY, USA, 2013.
- Kanji, Z. A., Ladino, L. A., Wex, H., Boose, Y., Burkert-Kohn, M., Cziczó, D. J., and Krämer, M.: Overview of Ice Nucleating Particles, *Meteorological Monographs*, 58, 1.1–1.33, <https://doi.org/10.1175/AMSMONOGRAPHS-D-16-0006.1>, 2017.
- Kumar, A., Marcolli, C., and Peter, T.: Ice Nucleation Activity of Silicates and Aluminosilicates in Pure Water and Aqueous Solutions – Part 3: Aluminosilicates, *Atmospheric Chemistry and Physics*, 19, 6059–6084, <https://doi.org/10.5194/acp-19-6059-2019>, 2019.
- 620 Kunert, A. T., Lamneck, M., Helleis, F., Pöschl, U., Pöhlker, M. L., and Fröhlich-Nowoisky, J.: Twin-Plate Ice Nucleation Assay (TINA) with Infrared Detection for High-Throughput Droplet Freezing Experiments with Biological Ice Nuclei in Laboratory and Field Samples, *Atmos. Meas. Tech.*, 11, 6327–6337, <https://doi.org/10.5194/amt-11-6327-2018>, 2018.
- Li, K., Xu, S., Shi, W., He, M., Li, H., Li, S., Zhou, X., Wang, J., and Song, Y.: Investigating the Effects of Solid Surfaces on Ice Nucleation, *Langmuir*, 28, 10749–10754, <https://doi.org/10.1021/la3014915>, 2012.
- 625 Lloyd, G., Choullarton, T., Bower, K., Crosier, J., Gallagher, M., Flynn, M., Dorsey, J., Liu, D., Taylor, J. W., Schlenczek, O., Fugal, J., Borrmann, S., Cotton, R., Field, P., and Blyth, A.: Small Ice Particles at Slightly Supercooled Temperatures in Tropical Maritime Convection, *Atmos. Chem. Phys.*, 20, 3895–3904, <https://doi.org/10.5194/acp-20-3895-2020>, 2020.
- Lohmann, U., Luond, F., and Mahrt, F.: *An Introduction to Clouds: From the Microscale to Climate*, Cambridge University Press, Cambridge, <https://doi.org/10.1017/CBO9781139087513>, 2016.
- 630 Marcolli, C.: Ice Nucleation Triggered by Negative Pressure, *Scientific Reports*, 7, 16634, <https://doi.org/10.1038/s41598-017-16787-3>, 2017.
- Marcolli, C.: Technical Note: Fundamental Aspects of Ice Nucleation via Pore Condensation and Freezing Including Laplace Pressure and Growth into Macroscopic Ice, *Atmospheric Chemistry and Physics*, 20, 3209–3230, <https://doi.org/10.5194/acp-20-3209-2020>, 2020.
- Mason, R. H., Chou, C., McCluskey, C. S., Levin, E. J. T., Schiller, C. L., Hill, T. C. J., Huffman, J. A., DeMott, P. J., and Bertram,
635 A. K.: The Micro-Orifice Uniform Deposit Impactor–Droplet Freezing Technique (MOUDI-DFT) for Measuring Concentrations of Ice Nucleating Particles as a Function of Size: Improvements and Initial Validation, *Atmospheric Measurement Techniques*, 8, 2449–2462, <https://doi.org/10.5194/amt-8-2449-2015>, 2015.



- McCluskey, C. S., Hill, T. C. J., Malfatti, F., Sultana, C. M., Lee, C., Santander, M. V., Beall, C. M., Moore, K. A., Cornwell, G. C., Collins, D. B., Prather, K. A., Jayarathne, T., Stone, E. A., Azam, F., Kreidenweis, S. M., and DeMott, P. J.: A Dynamic Link between
640 Ice Nucleating Particles Released in Nascent Sea Spray Aerosol and Oceanic Biological Activity during Two Mesocosm Experiments, *J. Atmos. Sci.*, 74, 151–166, <https://doi.org/10.1175/JAS-D-16-0087.1>, 2017.
- Mignani, C., Creamean, J. M., Zimmermann, L., Alewell, C., and Conen, F.: New Type of Evidence for Secondary Ice Formation at around -15 °C in Mixed-Phase Clouds, *Atmospheric Chemistry and Physics*, 19, 877–886, <https://doi.org/10.5194/acp-19-877-2019>, 2019.
- Morris, C. E., Georgakopoulos, D. G., and Sands, D. C.: Ice Nucleation Active Bacteria and Their Potential Role in Precipitation, *Journal de*
645 *Physique IV (Proceedings)*, 121, 87–103, <https://doi.org/10.1051/jp4:2004121004>, 2004.
- Myers-Pigg, A. N., Griffin, R. J., Louchouart, P., Norwood, M. J., Sterne, A., and Cevik, B. K.: Signatures of Biomass Burning Aerosols in the Plume of a Saltmarsh Wildfire in South Texas, *Environ. Sci. Technol.*, 50, 9308–9314, <https://doi.org/10.1021/acs.est.6b02132>, 2016.
- O, K.-T. and Wood, R.: Exploring an Approximation for the Homogeneous Freezing Temperature of Water Droplets, *Atmos. Chem. Phys.*, 16, 7239–7249, <https://doi.org/10.5194/acp-16-7239-2016>, 2016.
- 650 O’Sullivan, D., Murray, B. J., Malkin, T. L., Whale, T. F., Umo, N. S., Atkinson, J. D., Price, H. C., Baustian, K. J., Browse, J., and Webb, M. E.: Ice Nucleation by Fertile Soil Dusts: Relative Importance of Mineral and Biogenic Components, *Atmos. Chem. Phys.*, 14, 1853–1867, <https://doi.org/10.5194/acp-14-1853-2014>, 2014.
- O’Sullivan, D., Murray, B. J., Ross, J. F., Whale, T. F., Price, H. C., Atkinson, J. D., Umo, N. S., and Webb, M. E.: The Relevance of Nanoscale Biological Fragments for Ice Nucleation in Clouds, *Scientific Reports*, 5, 8082, <https://doi.org/10.1038/srep08082>, 2015.
- 655 Peckhaus, A., Kiselev, A., Hiron, T., Ebert, M., and Leisner, T.: A Comparative Study of K-Rich and Na/Ca-Rich Feldspar Ice-Nucleating particles in a Nanoliter Droplet Freezing Assay, *Atmos. Chem. Phys.*, 16, 11 477–11 496, <https://doi.org/10.5194/acp-16-11477-2016>, 2016.
- Perkins, R. J., Gillette, S. M., Hill, T. C. J., and DeMott, P. J.: The Labile Nature of Ice Nucleation by Arizona Test Dust, *ACS Earth Space Chem.*, 4, 133–141, <https://doi.org/10.1021/acsearthspacechem.9b00304>, 2020.
- 660 Petters, M. D. and Wright, T. P.: Revisiting Ice Nucleation from Precipitation Samples, *Geophys. Res. Lett.*, 42, 8758–8766, <https://doi.org/10.1002/2015GL065733>, 2015.
- Polen, M., Lawlis, E., and Sullivan, R. C.: The Unstable Ice Nucleation Properties of Snomax® Bacterial Particles, *J. Geophys. Res. D: Atmos.*, 121, 11,666–11,678, <https://doi.org/10.1002/2016JD025251>, 2016.
- Polen, M., Brubaker, T., Somers, J., and Sullivan, R. C.: Cleaning up Our Water: Reducing Interferences from Nonhomogeneous Freezing of “Pure” Water in Droplet Freezing Assays of Ice-Nucleating Particles, *Atmospheric Measurement Techniques*, 11, 5315–5334,
665 <https://doi.org/10.5194/amt-11-5315-2018>, 2018.
- Pummer, B. G., Bauer, H., Bernardi, J., Bleicher, S., and Grothe, H.: Suspendable Macromolecules Are Responsible for Ice Nucleation Activity of Birch and Conifer Pollen, *Atmos. Chem. Phys.*, 12, 2541–2550, <https://doi.org/10.5194/acp-12-2541-2012>, 2012.
- Pummer, B. G., Budke, C., Augustin-Bauditz, S., Niedermeier, D., Felgitsch, L., Kampf, C. J., Huber, R. G., Liedl, K. R., Loerting, T.,
670 Moschen, T., Schauerperl, M., Tollinger, M., Morris, C. E., Wex, H., Grothe, H., Pöschl, U., Koop, T., and Fröhlich-Nowoisky, J.: Ice Nucleation by Water-Soluble Macromolecules, *Atmos. Chem. Phys.*, 15, 4077–4091, <https://doi.org/10.5194/acp-15-4077-2015>, 2015.
- Ralph, J., Lapierre, C., and Boerjan, W.: Lignin Structure and Its Engineering, *Current Opinion in Biotechnology*, 56, 240–249, <https://doi.org/10.1016/j.copbio.2019.02.019>, 2019.
- Reicher, N., Segev, L., and Rudich, Y.: The Weizmann Supercooled Droplets Observation on a Microarray (WISDOM) and Application for
675 Ambient Dust, *Atmos. Meas. Tech.*, 11, 233–248, <https://doi.org/10.5194/amt-11-233-2018>, 2018.



- Rogers, D. C.: Development of a Continuous Flow Thermal Gradient Diffusion Chamber for Ice Nucleation Studies, *Atmos. Res.*, 22, 149–181, [https://doi.org/10.1016/0169-8095\(88\)90005-1](https://doi.org/10.1016/0169-8095(88)90005-1), 1988.
- Shakya, K. M., Louchouart, P., and Griffin, R. J.: Lignin-Derived Phenols in Houston Aerosols: Implications for Natural Background Sources, *Environ. Sci. Technol.*, 45, 8268–8275, <https://doi.org/10.1021/es201668y>, 2011.
- 680 Steinke, I., Hiranuma, N., Funk, R., Höhler, K., Tüllmann, N., Umo, N. S., Weidler, P. G., Möhler, O., and Leisner, T.: Complex Plant-Derived Organic Aerosol as Ice-Nucleating Particles - More than a Sum of Their Parts?, *Atmos. Chem. Phys. Discuss.*, pp. 1–17, <https://doi.org/10.5194/acp-2019-869>, 2019.
- Stopelli, E., Conen, F., Zimmermann, L., Alewell, C., and Morris, C. E.: Freezing Nucleation Apparatus Puts New Slant on Study of Biological Ice Nucleators in Precipitation, *Atmos. Meas. Tech.*, 7, 129–134, <https://doi.org/10.5194/amt-7-129-2014>, 2014.
- 685 Storelvmo, T.: Aerosol Effects on Climate via Mixed-Phase and Ice Clouds, *Annu. Rev. Earth Planet. Sci.*, 45, 199–222, <https://doi.org/10.1146/annurev-earth-060115-012240>, 2017.
- Suski, K. J., Hill, T. C. J., Levin, E. J. T., Miller, A., DeMott, P. J., and Kreidenweis, S. M.: Agricultural Harvesting Emissions of Ice-Nucleating Particles, *Atmos. Chem. Phys.*, 18, 13 755–13 771, <https://doi.org/10.5194/acp-18-13755-2018>, 2018.
- Tarn, M. D., Sikora, S. N. F., Porter, G. C. E., Wyld, B. V., Alayof, M., Reicher, N., Harrison, A. D., Rudich, Y., Shim, J.-u., and Murray, B. J.: On-Chip Analysis of Atmospheric Ice-Nucleating Particles in Continuous Flow, *Lab Chip*, <https://doi.org/10.1039/D0LC00251H>, 2020.
- Tobo, Y.: An Improved Approach for Measuring Immersion Freezing in Large Droplets over a Wide Temperature Range, *Sci. Rep.*, 6, 32 930, <https://doi.org/10.1038/srep32930>, 2016.
- Vali, G.: Quantitative Evaluation of Experimental Results on the Heterogeneous Freezing Nucleation of Supercooled Liquids, *J. Atmos. Sci.*, 28, 402–409, [https://doi.org/10.1175/1520-0469\(1971\)028<0402:QEOERA>2.0.CO;2](https://doi.org/10.1175/1520-0469(1971)028<0402:QEOERA>2.0.CO;2), 1971.
- Vali, G.: Principles of Ice Nucleation, in: *Biological Ice Nucleation and Its Applications*, edited by Lee, R. E., Warren, G. J., and Gusta, L. V., The American Phytopathological Society, St. Paul, Minnesota, USA, 1995.
- Vali, G.: Revisiting the Differential Freezing Nucleus Spectra Derived from Drop-Freezing Experiments: Methods of Calculation, Applications, and Confidence Limits, *Atmos. Meas. Tech.*, 12, 1219–1231, <https://doi.org/10.5194/amt-12-1219-2019>, 2019.
- 700 Vali, G. and Stansbury, E. J.: Time-Dependent Characteristics of the Heterogeneous Nucleation of Ice, *Can. J. Phys.*, 44, 477–502, <https://doi.org/10.1139/p66-044>, 1966.
- Wang, P. K.: *Physics and Dynamics of Clouds and Precipitation*, Cambridge University Press, Cambridge, <https://doi.org/10.1017/CBO9780511794285>, 2013.
- Wex, H., Augustin-Bauditz, S., Boose, Y., Budke, C., Curtius, J., Diehl, K., Dreyer, A., Frank, F., Hartmann, S., Hiranuma, N., Jantsch, E., Kanji, Z. A., Kiselev, A., Koop, T., Möhler, O., Niedermeier, D., Nillius, B., Rösch, M., Rose, D., Schmidt, C., Steinke, I., and Stratmann, F.: Intercomparing Different Devices for the Investigation of Ice Nucleating Particles Using Snomax[®] as Test Substance, *Atmos. Chem. Phys.*, 15, 1463–1485, <https://doi.org/10.5194/acp-15-1463-2015>, 2015.
- Whale, T. F., Murray, B. J., O’Sullivan, D., Wilson, T. W., Umo, N. S., Baustian, K. J., Atkinson, J. D., Workneh, D. A., and Morris, G. J.: A Technique for Quantifying Heterogeneous Ice Nucleation in Microlitre Supercooled Water Droplets, *Atmos. Meas. Tech.*, 8, 2437–2447, <https://doi.org/10.5194/amt-8-2437-2015>, 2015.
- 710 Wilson, T. W., Ladino, L. A., Alpert, P. A., Breckels, M. N., Brooks, I. M., Browse, J., Burrows, S. M., Carslaw, K. S., Huffman, J. A., Judd, C., Kilhau, W. P., Mason, R. H., McFiggans, G., Miller, L. A., Najera, J. J., Polishchuk, E., Rae, S., Schiller, C. L., Si, M., Temprado, J. V., Whale, T. F., Wong, J. P. S., Wurl, O., Yakobi-Hancock, J., Abbatt, J. P. D., Aller, J. Y., Bertram, A. K., Knopf, D. A., and Murray,



- 715 B. J.: A Marine Biogenic Source of Atmospheric Ice-Nucleating Particles, *Nature*, 525, 234–238, <https://doi.org/10.1038/nature14986>, 2015.
- Wright, T. P. and Petters, M. D.: The Role of Time in Heterogeneous Freezing Nucleation, *J. Geophys. Res. Atmos.*, 118, 3731–3743, <https://doi.org/10.1002/jgrd.50365>, 2013.
- Wright, T. P., Petters, M. D., Hader, J. D., Morton, T., and Holder, A. L.: Minimal Cooling Rate Dependence of Ice Nuclei Activity in the Immersion Mode, *Journal of Geophysical Research: Atmospheres*, 118, 10,535–10,543, <https://doi.org/10.1002/jgrd.50810>, 2013.
- 720 Zarogotas, D., Liolios, N. T., and Anastassopoulos, E.: Supercooling, Ice Nucleation and Crystal Growth: A Systematic Study in Plant Samples, *Cryobiology*, 72, 239–243, <https://doi.org/10.1016/j.cryobiol.2016.03.012>, 2016.
- Zhao, B., Wang, Y., Gu, Y., Liou, K.-N., Jiang, J. H., Fan, J., Liu, X., Huang, L., and Yung, Y. L.: Ice Nucleation by Aerosols from Anthropogenic Pollution, *Nature Geoscience*, 12, 602–607, <https://doi.org/10.1038/s41561-019-0389-4>, 2019.