

Atlantic and Arctic sea-air CO₂ Fluxes, 1990-2009

Supplementary information

- U. Schuster, School of Environmental Sciences, University of East Anglia, Norwich, UK, U.Schuster@uea.ac.uk*
G.A. McKinley, University of Wisconsin, Madison, WI, USA, gamckinley@wisc.edu
- N. Bates, Bermuda Institute of Ocean Science, Bermuda, nick.bates@bios.edu*
F. Chevallier, LSCE-IPSL, Paris, France, Frederic.Chevallier@lsce.ipsl.fr
S. C. Doney, Woods Hole Oceanographic Institution, Woods Hole, MA, USA, sdoney@whoi.edu
A. R. Fay, University of Wisconsin, Madison, WI, USA, arfay@wisc.edu
M. González-Dávila, Universidad de Las Palmas de Gran Canaria, Las Palmas, Gran Canaria, mgonzalez@dqui.ulpgc.es
N. Gruber, ETH-Zürich, Zürich, Switzerland, nicolas.gruber@env.ethz.ch
S. Jones, School of Environmental Sciences, University of East Anglia, Norwich, UK, s.jones3@uea.ac.uk
J. Krijnen, School of Environmental Sciences, University of East Anglia, Norwich, UK, J.Krijnen@uea.ac.uk
P. Landschützer, School of Environmental Sciences, University of East Anglia, Norwich, UK, P.Landschutzer@uea.ac.uk
N. Lefèvre, LOCEAN, Université Pierre et Marie Curie, Paris, France, Nathalie.Lefevre@locean-ipsl.upmc.fr
M. Manizza, Scripps Institution of Oceanography, La Jolla, CA, USA, mmanizza@ucsd.edu
J. Mathis, NOAA Pacific Marine Environmental Laboratory, Seattle, USA, jeremy.mathis@noaa.gov
N. Metzl, LOCEAN-IPSL, CNRS, UPMC, Paris, France, nicolas.metzl@upmc.fr
A. Olsen, Uni Research, Bergen, Norway, are.olsen@imr.no
A.F. Rios, Instituto de Investigaciones Marinas, IIM-CSIC, Vigo, Spain, aida@iim.csic.es
C. Rödenbeck, Max-Planck-Institut für Biogeochemie, Jena, Germany, Christian.Roedenbeck@bgc-jena.mpg.de
J. M. Santana-Casiano, Universidad de Las Palmas de Gran Canaria, Las Palmas, Gran Canaria, jmsantana@dqui.ulpgc.es
T. Takahashi, Lamont Doherty Earth Observatory of Columbia University, Palisades, NY, USA, taka@ldeo.columbia.edu
R. Wanninkhof, NOAA/ Atlantic Oceanographic and Meteorological Laboratory, Miami, FL, USA. Rik.Wanninkhof@noaa.gov
A.J. Watson, School of Environmental Sciences, University of East Anglia, Norwich, UK, A.J.Watson@uea.ac.uk

1990-2009 HIGH FREQUENCY VARIABILITY (PgC/yr)

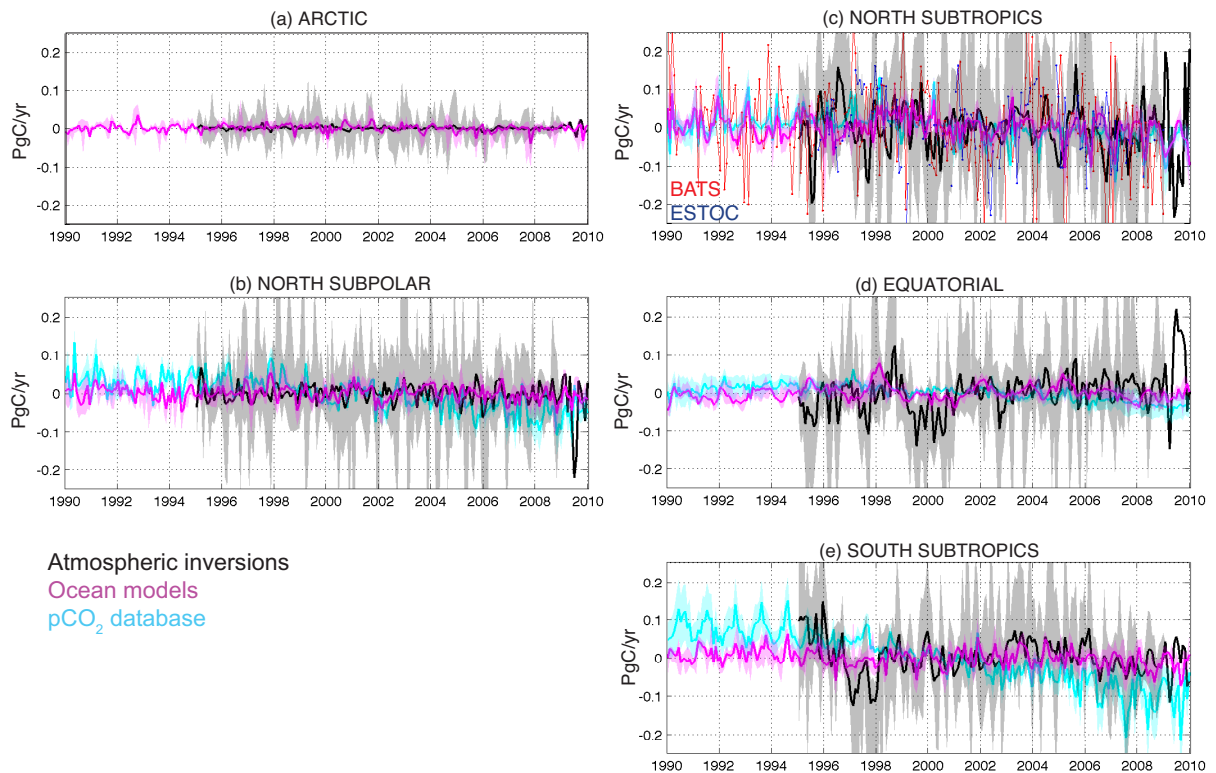


Figure Suppl 1: High frequency interannual variability of sea-air CO₂ fluxes [Pg C yr⁻¹] in the (a) Arctic, (b) North Subpolar, (c) North Subtropics, (d) Equatorial, and (e) South Subtropics for atmospheric inversions (black), ocean models (magenta), and pCO₂ database (cyan). Shaded region is the max and min from the atmospheric inversions and ocean models, and the uncertainty of the harmonic fit for the pCO₂ database. SOCAT MPR is not included because its timescale is too short. IAV at BATS (red) and ESTOC (dark blue) are included in the North Subtropics.