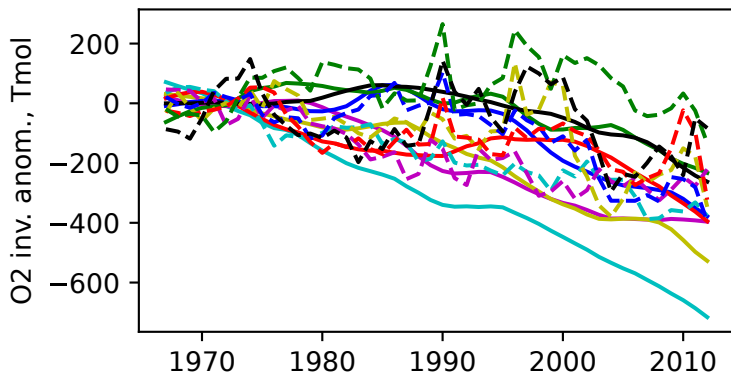
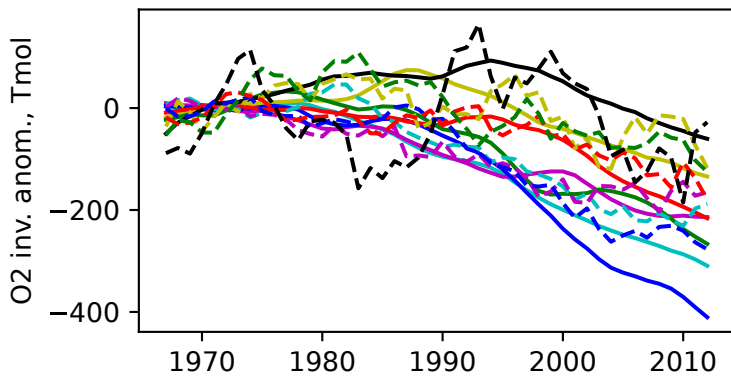


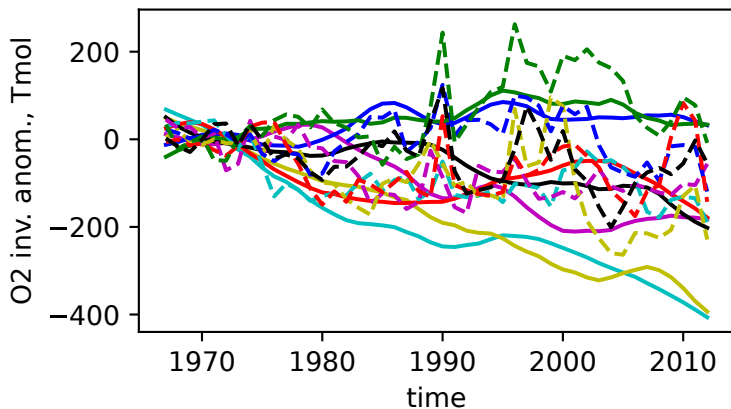
(a) Global



(b) NH



(c) SH



- CanESM5 (full)
- MPI-ESM1-2-LR (full)
- GFDL-ESM4 (full)
- IPSL-CM6A-LR (full)
- MIROC-ES2L (full)
- NorESM2-LM (full)
- E3SM1-1 (full)
- - - CanESM5 (subsampled)
- - - MPI-ESM1-2-LR (subsampled)
- - - GFDL-ESM4 (subsampled)
- - - IPSL-CM6A-LR (subsampled)
- - - MIROC-ES2L (subsampled)
- - - NorESM2-LM (subsampled)
- - - E3SM1-1 (subsampled)