

Response to reviews of “Earth system responses to cumulative carbon emissions”,
Biogeosciences Discuss., 12, 9839-9877, doi:10.5194/bgd-12-9839-2015, 2015.

M. Steinacher and F. Joos, November 2015

We would like to thank all four reviewers for their very helpful and constructive comments and their careful assessment of our manuscript. We thank all four reviewers for their time and effort. This is much appreciated.

Please find below our detailed response (bold font) to the reviewers' comments (*italic*). We followed the advice by the reviewers, except for a few cases. A revised version of the manuscript with the modification highlighted (track-changed) is added to this response.

Referee #1

Overall the manuscript deals with a very relevant question, i.e. what is the sensitivity of the Earth system to a doubling of CO₂ with respect to surface air temperature but in addition, and that is a new and enlightening aspect, also to a whole range of other target quantities of interest such as sea surface temperature, sea level rise, atlantic meridional overturning strength, surface ocean pH, surface aragonite saturation in the southern and tropical oceans as well as soil carbon stocks. Another new aspect is that the authors analyse these sensitivities based on a large ensemble of model simulations constrained by 26 different observational data sets, i.e. providing skill scores for each of the ensemble member. The manuscript is well written and the results are clearly presented. The manuscript only requires some minor clarifications listed below before it can be published.

Thank you. We appreciate that the MS is seen as well written and with results clearly presented.

P 9841, LI 11-13: One could think of several other impact relevant parameters such as precipitation or extreme events (heat waves, droughts, floods). The exact choice is of course always subjective but maybe the authors could add an explanation why they have chosen their specific list of targets.

Extreme events are not well represented in our energy balance atmosphere model. We modified the sentence to read:

“To this end, we analyzed TCPRE for variables that we deemed impact relevant and also reasonably well represented in our model including surface air temperature, sea surface temperature, sea level, ocean acidity, carbon storage in soils, and ocean overturning.”

We also added a subsection (2.5) in the method section to further explain the motivation and the climate parameters selected for the analysis.

P 9842, L 24: It would be good to define 'metrics' here, in the following sentences the authors give example of these metrics but the term is never explicitly defined.

Sentence modified to include definition:

“Well-defined metrics that summarize the Earth system response to a given forcing by a single or few values are useful ...”

P 9843, LI 22-24: What are these 'recent studies', the authors should clarify this and provide some more details here, are they observational based, if yes, which observations, or model based. What is meant by 'low TCR'?

Sentence modified to read:

“There is an apparent discrepancy between the TCR estimated with the most recent set of Earth System Models (ESM) versus some recent studies that invoke observational constraints (Otto et al., 2013) and simplified models (Schwartz, 2012; Collins et al., 2013). These latter studies suggest the possibility of a TCR below 1°C, i.e. outside the very likely range given in the Fifth Assessment Report of IPCC (Collins et al., 2013).”

P 9844, L 1: It should be '21st' century.

Corrected.

P 9845, LI 4-9: It would be good to provide some more details on the observational data sets: where do they come from, what are the temporal and spatial characteristics, what are the uncertainties?

We extended the text on the observational constraints significantly and added a new subsection (2.1.2) “Observational constraints and the computation of skill scores” in the method section. The extended text provides details about the origin, characteristics and uncertainties of the observational data sets.

In addition, the new figure A2 in the appendix gives an overview of the observational data sets.

P 9845, L 18: The cumulative skill should be the sum of all S_m over m . The authors should clarify this and add this in the manuscript.

We clarified this in the manuscript:

“3931 out of the 5000 ensemble members contribute less than a percent to the

cumulative skill $\sum s_m$ of all members m and are not used any further.”

P 9858, LI 1-21: Does the observational constrain on the posterior distribution depend on the order of applying the different data groups, for instance would it make a difference if ‘heat’ is applied before ‘CO2’ compared to the other way around?

No, the posterior distribution (after all constraints have been applied) does not depend on the order of applying the individual constraints. Where we apply the constraints sequentially (Fig. 6b and 6d in the revised manuscript), the order obviously matters for the intermediary steps because the subsets of constraints will be different for different orders, but at the end when all constraints are included, they all end up with the same posterior distribution independent of the order.

We added a clarifying note to the text:

“Please note that the fully constrained posterior distribution does not depend on the order of applying the individual constraints.”

P 9861, LI 15-20: What would be an appropriate time scale for SAT records to constrain TCR or ECS?

This is a question related to the ratio between signal (SAT change due to external forcing) and noise (SAT change due to internal, unforced variability). For the industrial period, internal variability (e.g., the recent slow down in the warming trend) does significantly affect trends on decadal to multi-decadal time scales and on the hemispheric and global scale. Also the determination of radiative forcing is generally affected by larger percentage uncertainties for short than for long periods. It is also a question of the spatial scale considered. On the regional or local scale (grid cell within a model) the influence of internal variability is generally larger than on large spatial scales. Number and quality of SAT data may degrade when going back in time making large-scale SAT reconstructions more challenging. The selection of century-long and hemispheric-scale SAT records appears appropriate in the context of our study.

Figures: The figures could be increased in size for better readability, esp figures 2 and 3.

We will ask the publisher to make the figures as large as possible when typesetting the final paper.

Referee #2 (A. J. Dolman)

This is a nice, timely paper addressing the issue of linearity between cumulative emissions and a range of climate and ocean variables. The authors also quantify the equilibrium climate sensitivity (ECS) and transient climate response. For surface temperature this linearity is by now well established (if maybe not completely understood), for other variables not. The main contribution of the paper is that it sets out to investigate this in a structured way with a constraint model ensemble and a large set of emission scenarios. This allows the authors not only to address scenario uncertainty but also model, response uncertainty. However, it takes several readings to get this message across to the reader, and the paper may benefit from some clear rephrasing of the goals and the steps to approach that. Perhaps a flow chart after figure 1 could do that. For instance section 3.1 is entitled climate response to an emission impulse, whereas really the objective is to see whether, using IRFs the response of any variable X is linearly related to the emission pathway. Keeping the reader fixed to that ultimate goal helps the readability. In general the paper is very densely written with little attention to helping the reader stay focussed on the key questions. Some rephrasing and additional lines would be easy to insert, but turn the paper into a real scientific paper rather than a report.

Thank you for these valuable comments. In response, we have expanded the abstract, introduction, the method, the result and discussion section to express and explain more clearly the goals of the manuscript and of individual subsections. We would like to refer the reviewer to the revised manuscript (in track change modus) supplied with this response for a complete overview of changes. A few revisions are given below to provide a few examples of our changes.

For example, the paragraph defining the goals of the paper has been expanded and moved towards the end of the introduction. The last paragraph of the introduction now explains the structure of the paper. The text reads:

“The goals of this study are (i) to establish the relation between cumulative CO₂ emissions and changes in illustrative, impact-relevant Earth System parameters, (ii) to quantify TCRE, TCR and ECS, and (iii) to establish the response of different Earth System parameters to an emission pulse, i.e. the Impulse Response Function. In analogy to TCRE, we introduce a new metric, the Transient Climate Parameter Response to cumulative CO₂ Emissions (TCPRE). TCPRE^X is the change in a climate parameter, X , in response to cumulative carbon emissions of 1000 GtC. To this end, we analyzed TCPRE for variables that we deemed impact relevant and also reasonably well represented in our model including surface air temperature, sea surface temperature, sea level, ocean acidity, carbon storage in soils, and ocean

overturning. The link and the linearity between the responses in the different variables and cumulative CO₂ emissions is investigated in a structured way with an observation-constraint model ensemble and a large set of emissions scenarios. This allows us not only to address scenarios uncertainty but also model, response uncertainty. We quantify uncertainties related to specific greenhouse gas emission trajectories, i.e. scenario uncertainty, by analyzing responses to CO₂ emission pulses as well as to a set of 55 scenarios representing the evolution of carbon dioxide and other radiative agents. The response uncertainties for these scenarios are quantified with a ~1000-member model ensemble constrained by 26 observational data sets in a Bayesian, Monte-Carlo-type framework with an Earth System Model of Intermediate Complexity. The model features spatially-explicit representation of land use forcing, vegetation and carbon dynamics, as well as physically consistent surface-to-deep transport of heat and carbon by a 3-D, dynamic model ocean, thereby partly overcoming deficiencies identified for box-type models used in earlier probabilistic assessments (Shindell, 2014b, a). This allows us also to reassess the probability density distribution, including best estimates and confidence ranges, for the Equilibrium Climate Sensitivity (ECS), the transient climate response (TCR), and the Transient Climate Response to cumulative CO₂ Emissions (TCRE).

This paper is structured in the following way. In the methods section , the modeling [...]"

We have expanded figure 1 showing a flowchart to cover also 2xCO₂ and CO₂ emission pulse simulations.

The title of subsection 3.1 now includes the word linearity:

“Climate response to a CO₂ emission pulse: testing the linearity of the emission-response relationship”

And additional text at the beginning of this section reads:

“A main goal of this section on IRF is to discuss to which extent one may expect a close-to-linear relationship between cumulative CO₂ emissions and a climate parameter of interest. A linear relationship between emissions and parameter X has the advantage that the determination of TCRPE^X does not depend on the choice of scenario nor the magnitude of CO₂ emissions. In addition, TCRPE^X would in the case of linearity fully describes the parameter response to any CO₂ emissions. We start with a description of the model setup, followed by theoretical considerations, then discuss linearity in the context of CO₂-only scenario uncertainty by analyzing median model responses, then turn to the response uncertainty by relying on the full model ensemble and compare scenario and response uncertainty. Finally, we

briefly address scenario uncertainty due to non-CO₂ forcing.”

Other comments

Title. It may be worthwhile to insert the word linearity somewhere in the paper.

We changed the title to: “Transient Earth system responses to cumulative carbon dioxide emissions: linearities, uncertainties and probabilities in an observation-constrained model ensemble”

Abstract

L 3 is rather than are

Corrected.

L4 response rather than responses (and is rather than are)

Corrected.

L11 replace in steric by a steric

Corrected.

P9841 L10-28. I would prefer to see this paragraph at the end of the introduction. Done.

Paragraph moved and expanded as explained above.

P9846 l 1-3. How much cooling is effected by this assumption, and how does this effect the climate sensitive further down in the paper. This is an important issue, and while the authors appear to be aware of it, they skip over it a little too lightly.

The constant radiative forcing from aerosols assumed for the 23 AME scenarios after 2005 is -1.17 W/m², whereas the average of the other 32 scenarios is -0.40 W/m² by 2100 [range -1.19 – -0.10 W/m²] (Fig. A1f; Steinacher et al. 2013). This negative forcing has roughly the same order of magnitude as the positive forcing from non-CO₂ greenhouse gases after 2100 at the lower end of the scenario range, and therefore those effects tend to cancel out in the AME scenarios (Fig. A1b).

It is important to note, however, that this issue does not affect our estimates of TCR, ECS, and TCRE. Those metrics are calculated from CO₂-only simulations (1%/yr increase scenario) without aerosol and without non-CO₂ greenhouse gas forcing. The process of constraining the model ensemble is not affected either, because the model results are evaluated over the historical period where the observation-based aerosol forcing is prescribed rather than a scenario.

To emphasize this in the paper we added the forcing time series in the appendix

(Fig. A1) and extended the text:

“We therefore make the conservative assumption of constant aerosol emissions at the level of the year 2005 (-1.17 Wm^{-2}), which implies a significant cooling effect continued into the future in those 23 (out of 55) scenarios (Fig. A1f). Please note that this effect does not affect or estimates of TCR, ECS and TCRE, which are based on the CO₂-only simulations described below, nor the constraining of the model ensemble with observation-based data over the historical period.”

P9846 I21 definitions

Corrected.

P9847 L21. I do not quite understand why the weighing with the model scores is performed here. I understood that you do that in the first steps, so is this really necessary? Or is it double weighting?

There is no double weighting. Equation 4 is the only step where the model score S_m is applied, when calculating the probability density functions. The steps described in the previous section concern only the calculation of the score S_m for each ensemble member. No weighting is performed in those first steps, the actual constraining of the ensemble is performed when calculating the PDFs (Eqs. 3-5).

We have extended the section 2.3 “Calculation of probability density functions” to explain the procedure in more detail (along with the general extension of the methods section; see responses to other reviewers).

P9853. L14. It may be better to use the verb used than ran in the case of the scenarios and refer to Steinacher et al (2013).

Changed to: “We used the model ensemble presented in Steinacher et al. (2013) for 55 multi-gas emission scenarios from the integrated assessment modeling community which range from very optimistic mitigation to high business-as-usual scenarios (Methods).”

P9853 L 28-29. I cannot see how the AME scenarios fit in 3c. Do you mean 3b? similarly on 9854 I 14-17.

Corrected. We had relabeled the figure without adjusting all the references in the text. Thank you for pointing this out.

P9861. L 17-20. It may be worth to have a look at van de Werf and Dolman, Earth Syst. Dynam. Discuss., 5, 529-544, 2014

Thank you. We refer to this interesting study in the introduction:

“van der Werf and Dolman (2014) applied a multiple regression approach using

historical temperature and radiative forcing data to find that recent temperature trends are influenced by natural modes of variability such as the Atlantic Multi-decadal Oscillation. They estimated TCR to be above 1°C using century-long records.”

The study is also cited in the discussion section when we address the influence of internal climate variability on observation-derived estimates of TCR and ECS.

Referee #3

General Comments:

This study is heavily reliant of work presented in Steinacher et al. (2013) to the point where I had to reread that paper and its supplementary materials to understand what the authors had done in the present study. This degree of recursive reading is unnecessary for a journal like Biogeosciences which has no hard length limit. I recommend giving a full description of the perturbed parameters experiments in the methods section, instead of referring to Steinacher et al. (2013). I recommend adding a table containing the parameters that were perturbed, the prior ranges, and a description of how it was decided which parameters to perturb.

We have extended the method section significantly. In the new subsection 2.1.1 “Model parameter sampling” we provide an extensive description of the parameters and the selection process. Further, we added a table (Table A1) in the appendix with the parameters and their prior ranges.

From the supplementary information from Steinacher et al. (2013) it does not appear that the authors have perturbed any ocean carbonate chemistry or biology parameters. As TCRC arises partially from ocean carbonate chemistry modulating the airborne fraction of carbon (MacDougall and Friedlingstein 2015, Goodwin et al. 2015), this limitation should be very explicitly stated in the manuscript.

We included the following in the methods:

“The ocean carbonate chemistry and marine biology parameters are not perturbed in this study in order to save computational costs. The ocean chemistry is very well understood and the relevant parameters are already well constrained (Dickson 2002). The marine biology parameters are considered of secondary importance for this study, and when compared to the parameters affecting the physical transport and uptake of anthropogenic carbon (Joos et al., 1999; Plattner et al., 2001; Heinze et al., 2004; Gangstø et al., 2008; Kwon et al., 2009).”

And in the discussion section:

“Further, we note that no ocean carbonate chemistry or marine biology parameters were varied in this study.”

The definition of TCRE used in this manuscript is confusing. TCRE is the constant of proportionality between cumulative emissions of CO₂ and change in near surface air temperature (Gillett et al. 2013). TCRE does not include the effect of non-CO₂ radiative forcing and certainly should not be used to describe changes in variables other than near surface temperature change, as is done here in equation 8. The response of peak temperature to cumulative emissions is the Cumulative Warming Commitment (Allen et al. 2009), which is the sum of TCRE and the Zero Emissions Commitment. I recommend that the generally accepted CO₂ only definition of TCRE be used in this manuscript.

As discussed in the manuscript we did not find a consistent use of TCRE in the literature. We agree, however, that this is confusing and changed our notation throughout the manuscript. The general transient response in a variable X to cumulative CO₂ emissions is now denoted TCPRE^X(t) and TCPRE^X_{peak}(t) instead of TCRE(t,X) and TCRE_{peak}(t,X). As suggested we use 'TCRE' according to the CO₂-only definition and we clarified this in section 2.2 “Definition of TCRE and TCPRE^X**”:**

“TCRE is used in this study as defined by Gillett et al. (2013). Thus, TCRE is equivalent to TCPRE^{ASAT} derived from a simulation with prescribed 1% yr⁻¹ atmospheric CO₂ increase and no other forcings.”

The dataset of simulations used in this study present a good opportunity to discern the effect of non-CO₂ forcing on the linear relationship between cumulative emissions and near surface temperature change. The authors have done some of that implicitly by calculating conventional TCRE (with the 1% experiment) and the proportionality between cumulative emissions of CO₂ and temperature change with all forcing included. This could be made much more explicit.

Unfortunately this is not that easy. Nonlinearities in the response to cumulative emissions in the multi-gas simulations may arise from either the non-CO₂ forcing or the CO₂ emission pathway (scenario dependency). Those effects cannot be distinguished properly without performing additional simulations with the same CO₂ emission pathway but without the non-CO₂ forcing.

There is no description in this manuscript of how the model was spun-up. Were all 5000 model versions spun-up or was some other method used to save computing resources? The lack of proper spin-ups crippled the analysis of perturbed physics experiments conducted by the Hadley centre a decade ago (e.g. Collins et al. 2007). Therefore, it would benefit this study to have a full description of how this was done for the present experiments.

We added a new subsection “Spin-up procedure**” (2.1.3) to the methods section that**

describes how it was done and checked.

The final section of the results discussing the effect of datasets on the PDFs of TCR and ECS is very interesting and could be expanded for clarity.

Done. In particular the following text is added:

“Interestingly, also the “CO₂” subgroup narrows the probability distribution for TCR and ECS, although less than the SAT and ocean heat records. The “CO₂” subgroup includes data sets of the atmospheric CO₂ increase over the industrial period and observation-based estimates of the ocean and land carbon uptake for recent periods. Ocean carbon and heat uptake are governed by similar processes, namely the surface-to-deep transport of excess carbon and heat from the surface to the deep ocean. Apparently, model members that are not able to describe the ocean carbon uptake and the evolution in atmospheric CO₂ reasonably well, fail also to match observational records for SAT and ocean heat content. The PDF for the “CO₂” subgroup displays several maxima for ECS and similar for TCR. We are not in a position to provide a firm explanation for these maxima, but speculate that this result may be related to the limited number of members in our ensemble and that the multi-dimensional model parameter space is not completely sampled.”

The discussion and conclusions section drifts into subjects not discussed in the introduction, such as the hiatus and the 2 K temperature change target. It may make more sense to split the discussion and conclusions section and include these subjects in a policy implication subsection. In its present form the conclusions from this study are not clearly articulated.

We split the section into a “Discussion” section with multiple subsections and a “Summary and Conclusions” section as requested, but did not introduce an additional policy implication subsection.

We revised the wording regarding the paragraph on internal climate variability (the hiatus) and its influence on estimates of TCR and ECS. It was not our intention to introduce new subjects, but to discuss our results for TCR and ECS. The following text was added:

“Another focus of this study is to provide observation-constrained estimates of the Transient Climate Response (TCR), the Equilibrium Climate Sensitivity (ECS), and the Transient Climate Response to cumulative CO₂ Emissions (TCRE) as determined from CO₂-only scenarios. The recent slow-down in global surface air-temperature warming [...] On the other hand, our results do not confirm some recent studies (Otto et al., 2013; Schwartz, 2012; Collins et al., 2013) that suggest the possibility of a TCR below 1°C. Such low values for TCR are outside the very likely range given in

the Fifth Assessment Report of IPCC (Collins et al, 2013) and of this study.

The choice and record length of observational constraints may bias results for TCR and ECS. In particular, internal climate variability, e.g., associated with the Atlantic Multi-decadal Oscillation, may obscure the link between anthropogenic forcing and response (van der Werf and Dolman, 2014). [...]"

We also articulated the link between the 2 degree target and the subject of this paper, the transient climate parameter response to cumulative CO₂ emissions more clearly (section 4.2 "Climate targets, allowable emission and TCPRE^x").

The relationship between cumulative emission of CO₂ and various Earth-system metrics was explored by Herrington and Zickfeld (2014). An intermediate complexity ESM was used by Olson et al. (2012) to estimate PDFs of TCR and ESC. These studies need to be cited and discussed within the context of the present study.

Done. These studies are now cited and discussed and we added additional citations to earlier probabilistic studies. E.g. "The 68% c.i. includes the scenario uncertainty range in TCRC (1.5 to 2.0°C) obtained by Herrington and Zickfeld (2014) with a single model setup and for a range of CO₂-only scenarios (with constant future non-CO₂ forcing)."

"This sensitivity is larger than found by Herrington and Zickfeld (2014), but simulated changes in AMOC are known to be model dependent."

"A tendency for the TCRC to decrease with increasing cumulative emissions is noted in earlier studies (Herrington and Zickfeld, 2014; Gillett et al., 2013; Matthews et al., 2009), while Krasting et al. (2014) find TCRC to be large for low and high emission rates and low for modern emission rates in idealized scenario in the GFDL model."

"However and in contrast to reduced-form, box-type, two-dimensional, linear response models, expert assumptions, or component models applied in many earlier probabilistic assessments (e.g. Wigley and Raper, 2001; Knutti et al., 2002, 2003, 2005; Schleussner et al., 2014; Bodman et al., 2013; Little et al., 2013; Harris et al., 2013; Holden et al., 2013; Bhat et al., 2012), the Bern3D-LPJ features a dynamic 3-dimensional ocean with physically consistent formulations for the transport of heat, carbon, and other biogeochemical tracers, similar to work by Holden et al. (2010) and Olson et al. (2012), and includes a state-of-the-art dynamic global vegetation model, peat carbon, and anthropogenic land use dynamics. The model is applied directly without using an emulator (Holden et al., 2010; Olson et al., 2012; Holden et al., 2015)."

Specific Comments:

Title: The title poorly described the study conducted. I would recommend something more like: "Estimating uncertainty in Earth system response to cumulative emissions utilizing a large perturbed physics ensemble."

We agree that the title was too general and we changed it to: "Transient Earth system responses to cumulative carbon dioxide emissions: linearities, uncertainties and probabilities in an observation-constrained model ensemble"

(See also answer to Referee #2.)

Page 9840 line 23: "damage from" not "damage by"

Corrected.

Page 9840 line 25: change to "from burning of fossil fuels"

Corrected.

Page 9841: The first paragraph is poorly written please re-write for clarity.

Done. The opening paragraphs are reformulated.

Page 9843 line 8: change to (e.g. Huber and Knutti . . .

Changed.

Page 9843 line 21: TCRE is the "Transient Response to Cumulative CO2 Emissions" not the "Transient Response to Cumulative carbon Emissions". Please change throughout the manuscript.

Changed.

Page 9843 line 16: Change "interesting" to "useful"

Changed.

Page 9843 line 21: Add citation to Gregory et al. (2009).

Done. Reference added.

Page 9843 line 23: Spell out "versus".

Changed.

Page 9843 line 26: Use "Shindell" instead of "He"

Changed.

Page 9844 first paragraph: This would be a good place to mention Olson et al. (2012).

Done. We added Olson et al., 2012 and some other relevant citations:

“Probabilistic assessments are widely used to determine probability distributions of model parameters, climate sensitivity and many other climate parameters (e.g. Wigley and Raper, 2001; Knutti et al., 2002, 2003; Murphy et al., 2004; Knutti et al., 2005; Schleussner et al., 2014; Bodman et al., 2013; Little et al., 2013; Harris et al., 2013; Holden et al., 2013; Bhat et al., 2012; Holden et al., 2010; Olson et al., 2012; Williamson et al., 2013). The Bern3D model was used in connection with an Ensemble Kalman Filter to constrain model parameters and regional air-sea carbon fluxes from observations (Gerber et al., 2009; Gerber and Joos, 2010, 2013)”.

Page 9844 line 26: Table S1 seems critical to understanding this study. Please reproduce the table in this manuscript.

The table is now reproduced in the appendix (Table A1) and the method section has been extended in this respect (see also answer to general comment above).

Page 9846 second paragraph: Why were pulses done from 389 ppm instead of the pre-industrial climate?

Here, we follow Joos et al. (2013) and IPCC AR5. IPCC AR5 uses the pulse response for a background of 389 ppm to compute Global Warming Potentials. The response in atmospheric CO₂ to an emission pulse depends on the background conditions (Joos et al. 2013). In the context of future scenarios it makes sense to analyze the response to an emission pulse under present day conditions rather than preindustrial.

Page 9847 line 14: The peak temperature will not necessarily occur in 2300 CE. Is the temperature in 2300 being used as an approximation for the peak temperature? In many scenarios would peak temperature occur before 2300?

No. According to equation 2 the peak temperature response to cumulative CO₂ emissions is defined as the maximum temperature between 2000 and 2300 divided by the cumulative CO₂ emissions by the year 2300. The temperature peaks generally before 2300 CE, but this might not be true in all cases. We changed and extended the text to clarify:

“For the transient response analyses, TCPRE^X(t) is computed for every year t in the range $2000 < t \leq 2300$ (i.e. 300 data points per simulation). In contrast, the peak

response is represented by only one data point per simulation. It is the value of $X(t)$ at the time t_{\max} , i.e. where the maximum absolute change between the years 2000 and 2300 occurs, divided by the cumulative emissions in the year 2300, $E(t = 2300)$, and denoted $\text{TCPRE}^X_{\text{peak}}(t = 2300)$. Please note that the actual peak response might occur after 2300 CE, in which case $\text{TCPRE}^X_{\text{peak}}$ is only an approximation. Surface air temperature usually peaks before 2300 CE in the applied scenarios. Steric sea level rise, on the other hand, continues to increase after 2300 CE due to the large thermal inertia of the oceans.”

Page 9847: The term “convex hull” needs to be explained here. I suspect that for most readers of BGS (including myself) without explanation “convex hull” will only incite dim memories of long-ago geometry classes. 12, C3842–C3848, 2015
The abbreviation PDF (probability distribution function) is never spelled out in the manuscript.

We extended this section for clarification and added a definition of the term “convex hull”:

“Technically, we use the the convex hull which is the smallest region containing all points such that, for any pair of points within the region, the straight line segment that joins the pair of points is also within the region.”

The abbreviation PDF is now spelled out in the revised section.

Equation 8: TCRE is strictly defined in terms of temperature. Adopting this formulation confuses the meaning of TCRE. Please remove this equation and find a better way of explaining what you have done.

We changed this and introduced the more general response TCPRE^X (see answer to general comments above).

Page 9851 line 16: CE (Common Era or Christian Era) not AD (In the year of our Lord).

Changed.

Page 9852 line 23: The defining and most useful feature of TCRE is that it is nearly path-independent (Matthews et al. 2009) so this statement seems out of place.

Changed to the more general response TCPRE^X (see also answer to general comments above):

“Consequently, the model uncertainty will dominate the uncertainty in TCPRE^X and is larger than uncertainties arising from dependencies on the carbon emission pathway.”

Page 9853 line 24 to 27: I think the authors are trying to state that the Zero Emissions commitment is nearly zero in this model. This could be stated much more clearly.

No. The SAT response to an emission pulse (Fig 2b), and thus the Zero Emissions commitment, is similar to other models (see e.g. Joos et al., 2013). The zero emission commitment depends on the scenario pathway and has not been investigated in this study.

We simplified the text to avoid confusion:

“We find a largely linear relationship between cumulative CO₂ emissions and both transient and peak warming (Fig. 3a and c) for the set of emission scenarios considered here. These linear relationships confirm the finding from the pulse experiment above, i.e. that the response in the global SAT change is largely independent from the pathway of CO₂ emissions in our model.”

Page 9857 line 23 to 25: These questions are awkwardly worded.

Text is reworded to read:

“26 different observational data sets are applied to constrain carbon cycle and physical climate responses. This raises the question to which extent an individual data set or a group of data sets constrain the model responses and whether some data sets may unintentionally deteriorate estimates.”

Page 9860 line 27: Citations should be added to discussion of the “hiatus”.

Done. Several references are added:

“The recent slowdown in global surface air-temperature warming (Hartmann et al., 2013; Roberts et al., 2015; Nieves et al., 2015; Karl et al., 2015; Marotzke and Forster, 2015), termed hiatus, has provoked discussions whether climate models react too sensitive to radiative forcing.”

Page 9861 final paragraph: This paragraph seems out of place with respect to the rest of the manuscript. This should at least be described in more detail earlier in the manuscript.

Done. This paragraph is reformulated to more clearly express the link to the material presented. It is not the concluding paragraph anymore as a “Summary and Conclusions” section is now included at the end of the manuscript.

Temperature changes expressed in Kelvin and Celsius are used interchangeably in the manuscript. Please pick one and standardise throughout.

Done.

Figure 1: Does not include the 1% or pulse experiments which are crucial for the present study. Maybe redraft to take these simulations into consideration.

Done. The figure has been revised as suggested.

References:

Allen, M. R., D. J. Frame, C. Huntingford, C. D. Jones, J. A. Lowe, M. Meinshausen, and N. Meinshausen, 2009: Warming caused by cumulative carbon emissions towards the trillionth tonne. Nature, 458 (7242), 1163–1166.

Collins, M., C. Brierley, M. MacVean, B. Booth, and G. Harris, 2007: The sensitivity of the rate of transient climate change to ocean physics perturbations. Journal of climate, 20 (10), 2315–2320.

Gillett, N. P., V. K. Arora, D. Matthews, and M. R. Allen, 2013: Constraining the ratio of global warming to cumulative CO₂ emissions using cmip5 simulations. Journal of Climate, 26, 6844–6858.

Goodwin, P., R. G. Williams, and A. Ridgwell, 2015: Sensitivity of climate to cumulative carbon emissions due to compensation of ocean heat and carbon uptake. Nature Geoscience, 8 (1), 29–34.

Gregory, J. M., C. D. Jones, P. Cadule, and P. Friedlingstein, 2009: Quantifying carbon cycle feedbacks. Journal of Climate, 22 (19), 5232–5250.

Herrington, T. and K. Zickfeld, 2014: Path independence of climate and carbon cycle response over a broad range of cumulative carbon emissions. Earth System Dynamics, 5 (2), 409–422.

MacDougall, A. H. and P. Friedlingstein, 2015: The origin and limits of the near proportionality between climate warming and cumulative CO₂ emissions. Journal of Climate, 28, 4217–4230, doi:10.1175/JCLI-D-14-00036.1.

Matthews, H. D., N. P. Gillett, P. A. Stott, and K. Zickfeld, 2009: The proportionality of global warming to cumulative carbon emissions. Nature, 459, 829–832, doi:10.1038/nature08047.

Olson, R., R. Sriver, M. Goes, N. M. Urban, H. D. Matthews, M. Haran, and K. Keller, 2012: A climate sensitivity estimate using bayesian fusion of instrumental observations and an earth system model. Journal of Geophysical Research: Atmospheres, 117

Steinacher, M., F. Joos, and T. F. Stocker, 2013: Allowable carbon emissions lowered by multiple climate targets. Nature, 499 (7457), 197–201.

Referee #4

My general impression is that the paper addresses important research questions and delivers interesting information on the performance of a large model ensemble under various emission pathways. Yet it could benefit from putting more focus on the discussion of certain model aspects (e.g. the issue of linearity) rather than more describing simulation results.

Specific comments:

- Given the focus of this work, I am missing a more in-depth discussion of non-linearities in the model response. The authors discuss non-linearities mainly in the context of the impact of non-CO₂ forcings and negative emissions. I consider it crucial to underline that the model used may not simulate non-linearities due to model limitations. Only a short comment in the Discussion section is made about potential model limitations. I think the paper would benefit from discussing (as far as feasible) non-linearities which are not captured by the model due to (needed and justified) simplifications in the model design (e.g. regarding the model description of carbon cycle feedbacks). Although to a lesser extent, the aspect of incomplete description of Earth System feedbacks is also an issue for state-of-the-art complex climate models (e.g. for permafrost-carbon feedbacks).

Done. The following text is added in the discussion:

“Results for changes in Atlantic Meridional Overturning (AMOC) are known to vary considerably among different models and our ensemble may not represent the full uncertainty in AMOC response. Important processes are not represented in Bern3D-LPJ. Most notably, the melting of ice sheets and glacier and its impacts on sea level and AMOC are not included. Consequently, only results for the steric component of sea level rise are reported and results for changes in AMOC should be considered with caution. Potential climatic “surprises” such as the massive release of methane from clathrates or permafrost are also not considered.”

- The authors underline that they add new variables (surface ocean pH, calcium carbonate saturation states, and soil carbon) to the discussion of linearity in Earth System responses. Yet in the manuscript these climate variables are only shortly discussed when describing the simulated model simulations results (Figs. 2,5,6). A few implications of those results would be interesting to discuss. Also in this context: A description of what “surface aragonite saturation state” is and why it is of interest would be a helpful information to include into the manuscript.

Done. A new subsection “Selection of the climate parameters for analysis and computation of TCPRE” (2.5) is added at the end of the method sections. There, the

climate variables are discussed. Please see the track-change version of the manuscript for the related text.

- Section 2.4 and figure 4: To me it is not obvious that the issue of total vs. fossil-fuel only carbon emission is a key point for this study. I probably would put this discussion into a supplementary information section. If kept in the main manuscript, Figure 4 should be discussed in more detail (in the current manuscript there are only two short references made to Figure 4).

We moved the fossil-fuel only results to the appendix (former Section 2.4, Fig. 4 and Table 3).

- Additionally, in a supplement a figure could be shown illustrating the various emission scenarios used in this study (showing the temporal evolution of CO₂ emissions).

We added this figure in the appendix (Fig. A1).

- Fig. 2c: An improved explanation would help better clarifying the meaning of Fig.2c for interpreting modelling results.

Done. Text in caption modified to read:

“(c) shows the mean age of past emissions over the historical period and for the four RCP scenarios (left axis), and the fraction of the emissions older than 30 years (right axis) versus calendar years. More than half of the emissions are older than ~30 years. The bulk of the emissions at any calendar year is thus in the age range (x-axis in the other panels) where the pulse response function varies within a limited range for surface air temperature (b), surface pH (g) steric sea level rise (d) and Atlantic meridional overturning (e). This implies an approximately linear relationship between cumulative emissions and responses in these variables.”

- Forcing design: Is the assumption of constant CO₂ concentration and radiative forcing after 2150 made in all scenarios? E.g. RCP8.5 stabilizes only after 2200. Then the labels in the figures should be modified accordingly (the now labelled “RCP8.5” scenario differs from the conventional RCP8.5 scenario) and the figure legend should hint to the stabilizing at 2150.

Strictly speaking, the RCPs are only defined up to 2100 CE. You are right, however, that our extension of the scenarios beyond 2100 is not identical to the “official” Extended Concentration Pathways (ECP). We have clarified this in the caption of Fig. 3:

“Please note that our extensions of the RCP scenarios beyond 2100 are not identical to the Extended Concentration Pathways (ECP, see Methods).”

In the method section we have added the following text:

“Please note that the extensions of the RCP scenarios beyond 2100 CE as used in the AR5 (Extended Concentration Pathways, ECP; Meinshausen et al., 2011) are not identical to the extensions applied here. Our extensions of RCP4.5 and RCP6 are similar to ECP4.5 and ECP6, but ECP8.5 differs significantly from our extension of RCP8.5, where atmospheric CO₂ is stabilized by 2150.”

Further, the newly added Fig. A1 shows the forcings and emissions used in this study and should clarify things.

- Constraining of model responses: I wonder to what extent uncertainty in aerosol forcing is captured in the performed model simulations. Uncertainty in aerosol forcing is a key factor when observationally constraining climate sensitivity and transient climate response. I understand that the ensemble describes various emission scenarios with differing pathways of aerosol emissions. But how do these emissions translate into a spread of direct and indirect radiative forcing in the model?

One of the 19 key model parameters that are sampled is a scaling factor ($RF_{\text{aerosol, scale}}$) and reflects the uncertainty in the aerosol forcing given by Forster et al. (2007). I.e. the aerosol emissions are translated to radiative forcing as described in Joos et al. (2001) and Strassmann et al. (2009), and then the resulting radiative forcing is scaled with the sampled parameter $RF_{\text{aerosol, scale}}$ in different model configurations to reflect the uncertainty.

The scaling factor $RF_{\text{aerosol, scale}}$ is now mentioned in the extended method section 2.1.1 “Model parameter sampling**” and listed in the new Table A1. Further, we explain the translation of non-CO₂ emissions to radiative forcings in the method section:**

“For these simulations, we prescribe atmospheric CO₂ and the non-CO₂ radiative forcing derived from the emission scenarios (Fig. A1) as described in Joos et al. (2001) and Strassmann et al. (2009).”

- When using the “CO2 Group” constraint, how is the multi-modal distribution of ECS (and of TCR) to be interpreted? I would have expected no effect on ECS and TCR as I understood that these are calculated based on simulations with prescribed CO2 concentrations (and therefore CO2 parameters should not affect the results)?

We have extended this section (3.3.1) and elaborate more on these questions:

“Interestingly, also the “CO₂” subgroup narrows the probability distribution for TCR and ECS, although less than the SAT and ocean heat records. The “CO₂” subgroup includes data sets of the atmospheric CO₂ increase over the industrial period and observation-based estimates of the ocean and land carbon uptake for recent periods. Ocean carbon and heat uptake are governed by similar processes, namely the surface-to-deep transport of excess carbon and heat from the surface to the deep ocean. Apparently, model members that are not able to describe the ocean

carbon uptake and the evolution in atmospheric CO₂ reasonably well, fail also to match observational records for SAT and ocean heat content. The PDF for the “CO₂” subgroup displays several maxima for ECS and similar for TCR. We are not in a position to provide a firm explanation for these maxima, but speculate that this result may be related to the limited number of members in our ensemble and that the multi-dimensional model parameter space is not completely sampled.”

- *Discussion / conclusion section: The hiatus discussion is not directly linked to the rest of the manuscript and seems like describing a new issue. Maybe placing into an extra subsection?*

We revised the wording regarding the paragraph on internal climate variability (the hiatus) and its influence on estimates of TCR and ECS. It was not our intention to introduce new subjects, but to discuss our results for TCR and ECS. The following text was added:

“Another focus of this study is to provide observation-constrained estimates of the Transient Climate Response (TCR), the Equilibrium Climate Sensitivity (ECS), and the Transient Climate Response to cumulative CO₂ Emissions (TCRE) as determined from CO₂-only scenarios. The recent slow-down in global surface air-temperature warming (Hartmann et al., 2013; Roberts et al., 2015; Nieves et al., 2015; Karl et al., 2015; Marotzke and Forster, 2015), termed hiatus, has provoked discussions whether climate models react too sensitive to radiative forcing. [...] On the other hand, our results do not confirm some recent studies (Otto et al., 2013; Schwartz, 2012; Collins et al., 2013). that suggest the possibility of a TCR below 1°C. Such low values for TCR are outside the very likely range given in the Fifth Assessment Report of IPCC (Collins et al., 2013) and of this study.

The choice and record length of observational constraints may bias results for TCR and ECS. In particular, internal climate variability, e.g., associated with the Atlantic Multi-decadal Oscillation, may obscure the link between anthropogenic forcing and response (van der Werf and Dolman, 2014). [...]”

- *The paper refers to “cumulative carbon emissions” but should refer to “cumulative CO₂ emissions” which is the focus of this study.*

Changed.

Minor comments/ suggestions:

- *Abstract: use consistently 1 Digit estimates for indicated temperature changes*

Changed.

- *Page 9843: definition of TCR: refer to “atmospheric CO₂ concentration”. Although it is clear what is meant, I would check the manuscript where reported changes in “CO₂”*

should be rather described as changes in “atmospheric CO₂ concentrations” to avoid misunderstanding.

Done. “CO₂” modified to “atmospheric CO₂” wherever appropriate.

- Page 9843: Definition of ECS: ECS itself does not depend on the rate of ocean heat uptake, while observationally constrained estimates of ECS do. . .

Text modified to read:

“TCR and ECS are metrics for the physical climate system and they do not depend on the carbon cycle response (e.g. Huber and Knutti, 2014; Kummer and Dessler, 2014). TCR and ECS depend both on multiple physical feedbacks such as the water vapor, the ice-albedo, or the cloud feedbacks. TCR depends also on the rate of ocean heat uptake. ECS itself does not depend on the rate of ocean heat uptake, while observationally constrained estimates of ECS do.”

- Section 3.3.: What is the choice for the priors for TCR and ECS?

No explicit priors for TCR or ECS are chosen. The prior PDFs result from the unconstrained model ensemble, which is generated by varying 19 model parameters. One of those model parameters is the “nominal climate sensitivity”, which translates to a feedback parameter in the model to produce approximately the specified ECS. This parameter is now explained in the extended method section 2.1.1 “Model parameter sampling**” and listed in the new Table A1.**

- Page 9847: A quick explanation of “convex hull” in the applied context would be helpful.

We rephrased this section (see also response to other reviewers) and added a definition of the term “convex hull”:

“Technically, we use the the convex hull which is the smallest region containing all points such that, for any pair of points within the region, the straight line segment that joins the pair of points is also within the region.”

- Page 9847, L.28: non-linearity for low-end scenarios hard to see in shaded area.

The reference to the corresponding panel was wrong (Fig. 3c instead of Fig. 3b). Figure 3b has no shaded areas. The reference is corrected in the revised manuscript.

- Page 9851, L.12: “. . .will be discussed later” Indicate in which section the discussion can be found.

Done. Changed to: “... that will be discussed later in section 3.1.4.”

- Page 9854. L.18: *“The median transient response. . .”*

Changed.

- Page 9856. L3: *It seems in the following peak responses are discussed. Then the legend of figure 5 should indicate this.*

This was wrong and has been corrected:

“For AMOC, the response is somewhat stronger for low-emission than high-emission paths (Fig. 4). For 1000 GtC total emissions, we find a peak reduction in AMOC of -24 % (-35 to -15 %) (Table 2).”

- Page 9856. L 24: *Reference should be given to Fig.6e/f. For the response of soil carbon a linear regression seems to only insufficiently describe soil carbon dynamics. . .*

A reference to the figure is added. The sentence regarding the linearity of the response at the end of the paragraph has been deleted.

- Fig.2a,b: *Here it could be helpful to shortly discuss/explain why (early time) SAT responses are declining with increasing peak emissions (from 100 to 5000 GtC) despite increasing CO₂ concentration anomalies.*

Text added in section 3.1.3:

“At first glance, it may be surprising that the responses in SAT, SSLR, AMOC, and pH do not much depend on the size of the emission pulse given the strong sensitivity of the atmospheric CO₂ response to the pulse size. For the physical variables, this is a consequence of near-cancellation of non-linearity in the carbon cycle and in the relationship between radiative forcing and atmospheric CO₂ (Joos et al., 2013). The long-term response in atmospheric CO₂ (Fig. 2a) increases with increasing emissions and the fraction remaining airborne is substantially larger for large than for small emission pulses. On the other hand, radiative forcing depends logarithmically on atmospheric CO₂ and the change in forcing per unit change in CO₂ is smaller at high than at low atmospheric CO₂ concentrations. As a consequence, the response in radiative forcing is rather insensitive to the magnitude of the emission pulse and so is the response in climate variables forced by CO₂ radiative forcing.”

Spelling / Readability:

- Many of the figure legends (e.g. Fig.3,b&d) , axes description (e.g. ylabels in Fig.2) are hard to see.

We have increased the font size of the legends and axes labels where possible. Further, we hope that the figures will be scaled appropriately in the final paper so that the they are easy to read.

- Fig.5,6: subplot labelling a), b) etc. is missing

We have added the panel labels.

- Page 9846, L21: “define” instead of “defines”

Corrected.

- Use consistent notations, e.g. “confidence interval” or “c.i.”

Changed.

- Page 9856. L21: “to an increases” -> “to increases”. . .

Corrected.

- Page 9857. L15: “1500 yrs”

Changed.

Transient Earth system responses to cumulative carbon dioxide emissions: linearities, uncertainties, and probabilities in an observation-constrained model ensemble

M. Steinacher^{1,2} and F. Joos^{1,2}

¹Climate and Environmental Physics, University of Bern, 3012 Bern, Switzerland

²Oeschger Centre for Climate Change Research, University of Bern, 3012 Bern, Switzerland

Correspondence to: M. Steinacher (steinacher@climate.unibe.ch)

Abstract. Information on the relationship between cumulative fossil ~~carbon- CO_2~~ emissions and multiple climate targets ~~are-is~~ essential to design emission mitigation and climate adaptation strategies. In this study, the transient ~~responses in different climate variables are~~ response in a climate parameter per trillion ton of CO_2 emissions, termed TCPRE, is quantified for a set of impact-relevant climate parameters and from a large set of multi-forcing scenarios extended to year 2300 towards stabilization~~and in idealized experiments using~~. A ~1000 member ensemble of the Bern3D-LPJ carbon-climate model ~~The is applied and~~ model outcomes are constrained by 26 physical and biogeochemical observational data sets in a Bayesian, Monte-Carlo type framework. Uncertainties in TCPRE estimates include both scenario uncertainty and model response uncertainty. Cumulative fossil emissions of 1000 Gt C result in a global mean surface air temperature change of ~~+1.88~~1.9 °C (68 % confidence interval (c.i.): ~~1.28 to 2.69~~1.3 to 2.7 °C), a decrease in surface ocean pH of 0.19 (0.18 to 0.22), and in a steric sea level rise of 20 cm (13 to 27 cm until 2300). Linearity between cumulative emissions and transient response is high for pH and reasonably high for surface air and sea surface temperatures, but less pronounced for changes in Atlantic Meridional Overturning, Southern Ocean and tropical surface water saturation with respect to biogenic structures of calcium carbonate, and carbon stocks in soils. The ~~slopes of the relationships change when CO_2 is stabilized~~constrained model ensemble is also applied to determine the response to a pulse-like emission and in idealized CO_2 -only simulations. The Transient Climate Response is constrained, primarily by long-term ocean heat observations, to 1.7 °C (68 % c.i.: 1.3 to 2.2 °C) and the Equilibrium Climate Sensitivity to 2.9 °C (2.0 to 4.2 °C). This is consistent with results by CMIP5 models, but inconsistent with recent studies that relied on short-term air temperature data affected by natural climate variability.

1 Introduction

How multiple climate targets are related to allowable ~~carbon~~-CO₂ emissions provides basic information to design policies aimed to minimize severe or irreversible damage ~~by~~ ~~from~~ anthropogenic climate change (Steinacher et al., 2013). The emission of carbon dioxide ~~by fossil fuel burning from~~ burning of fossil fuels is by far the most dominant driver of the ongoing anthropogenic climate change and of ocean acidification (~~IPCC, 2013~~) (IPCC, 2013; Gattuso et al., 2015). The increase of a broad set of climate variables such as atmospheric carbon dioxide (CO₂), CO₂ radiative forcing, global air surface temperature or ocean acidification depends on cumulative ~~carbon~~-CO₂ emissions (Allen et al., 2009; IPCC, 1995). ~~The sum of all carbon emissions, rather than the annual emission flux, is relevant as fossil CO₂ accumulates in the climate system.~~ It is thus informative to quantify the link between cumulative ~~carbon emissions and~~, total CO₂ emissions and different climate parameters. It is advantageous to represent a climate target, e.g. the 2 °C global mean surface air temperature target by the United Nations, in terms of allowable total CO₂ emissions, as total CO₂ emissions is an easy to communicate emission mitigation goal. While the link between cumulative CO₂ emissions and global mean surface air temperature has been extensively studied (IPCC, 2013), relatively little attention has been paid to the relationship between cumulative CO₂ emissions and other impact-relevant variables such as sea level rise or ocean acidification. However, considering the link to emissions for other variables and from the global to the regional scale appears important as many impact-relevant changes are not directly related to global mean surface air temperature.

It is also important to quantify the uncertainty in ~~this link~~ these links with CO₂ emissions by using probabilistic, ~~observation-constraint~~ observation-constrained approaches or multi-model ensembles. This enables one to establish a budget for the amount of allowable carbon emissions if a given climate target or a set of targets is to be met with a given probability.

~~The goal of this study is to establish the relation between cumulative carbon emissions and changes in illustrative, impact-relevant Earth System parameters such as~~ Such budgets in probabilistic terms have been established for surface air temperature, ~~sea surface temperature, sea level, ocean acidity, carbon storage in soils, or ocean overturning. The linearity between the responses in the different variables and cumulative carbon emissions is investigated. We quantify uncertainties related to specific greenhouse gas emission trajectories, i.e. scenario uncertainty, and those associated with uncertainties in the response to a given emission trajectory by analyzing responses to carbon emission pulses as well as to~~ but only recently for a set of 55 scenarios representing the evolution of carbon dioxide and other radiative agents. The response uncertainties are ~~constrained by 26 observational data sets in a Bayesian, Monte Carlo-type framework with an Earth System Model of Intermediate Complexity. The model features spatially-explicit representation of land use forcing, vegetation and carbon dynamics, as well as physically consistent surface-to-deep transport of heat and carbon by a 3-D, dynamic model ocean, thereby partly overcoming deficiencies identified for box-type models used in earlier probabilistic assessments~~

(Shindell, 2014b, a). This allows us to reassess the probability density distribution, including best estimates and confidence ranges, for the Equilibrium Climate Sensitivity (ECS), the transient climate response (TCR), and the Transient Climate Response to cumulative carbon Emissions (TCRE) multiple climate-impact relevant variables (Steinacher et al., 2013).

A climate target that is currently recognized by most world governments (United Nations, 2010) places a limit of two degrees Celsius on the global mean warming since preindustrial times. This target emerged from the international negotiation process following the United Nations Framework Convention of Climate Change (United Nations, 1992) that entered in force in 1994. Yet, the United Nations Framework Convention of Climate Change (United Nations, 1992) has multiple objectives. It calls for the avoidance of dangerous anthropogenic interference within the climate system as well as to allow for ecosystems to adapt naturally to climate change, to ensure food production, and to enable sustainable economic development. These objectives cannot be encapsulated in one single target, e.g., a global mean surface air temperature target, but may require multiple targets. These may be specific for individual regions and components of the climate system, which includes the atmosphere, hydrosphere, biosphere and geosphere and their interactions (United Nations, 1992). Targets For example, targets may include bounds for ocean acidification sea level rise, ocean acidification, and sea water warming that threatens marine ecosystem functioning and services (IPCC, 2014) (IPCC, 2014; Gattuso et al., 2015; Howes et al., 2015). Ocean acidification is, like global warming, progressing with anthropogenic CO₂ emissions, but, unlike global warming, largely independent of the emissions and atmospheric abundance of non-CO₂ forcing agents. It is thus expected that the quantitative link to cumulative CO₂ emissions is different for ocean acidification parameters, e.g., surface ocean pH, than for global mean surface air temperature. In general, the quantitative relationship to emissions and its uncertainty ranges are distinct for different individual target variables.

Climate projections are associated with two fundamentally distinct types of uncertainties (e.g. Hawkins and Sutton, 2009). First, the scenario uncertainty arises from the fact that future anthropogenic emissions are not known because they depend largely on human actions and decisions, such as climate policies, technological advances, and other socio-economic factors. Second, the limited understanding of the response of the coupled Earth system to the emissions for a given scenario constitutes an additional uncertainty (, termed the model or response uncertainty).

Well defined metrics of Well-defined metrics that summarize the Earth system response to a given forcing are useful by a single or few values are useful in many aspects. They allow one to quantify the response uncertainty, and to compare results from different sources, such as ensemble model simulations, model intercomparisons, or observation-based estimates. The transient climate response, and ease, due to their relative simplicity, the communication among scientists and between scientists, stakeholders, and the public. The Transient Climate Response (TCR) and the equilibrium climate sensitivity Equilibrium Climate Sensitivity (ECS) are such metrics, which are used to quan-

tify the global mean surface air temperature (SAT) change associated with a doubling of atmospheric CO₂ (e.g. Knutti and Hegerl, 2008). The TCR measures the short-term response (i.e. the temperature increase at the time of doubling atmospheric CO₂ in a simulation with 1 % yr⁻¹ increase), while the ECS quantifies the long-term response after reaching a new equilibrium of the system under the increased radiative forcing. TCR and ECS are metrics for the physical climate system and they do not depend on the ~~rate of ocean heat uptake and multiple carbon cycle response~~ (e.g. Huber and Knutti, 2014; Kummer and Dessler, 2014) . TCR and ECS depend both on multiple physical feedbacks such as the water vapor, the ice-albedo, or the cloud feedbacks; but they do. TCR depends also on the rate of ocean heat uptake. ECS itself does not depend on the ~~carbon cycle response~~ (Huber and Knutti, 2014; Kummer and Dessler, 2014) rate of ocean heat uptake, while observationally constrained estimates of ECS do.

Certain metrics are helpful to reduce the scenario-dependency of results, which may facilitate the communication in a mitigation policy context (~~Allen and Stoeker, 2014~~) (Allen et al., 2009) . One such metric is the response to a pulse-like emission of CO₂ and other forcing agents as applied to compute global warming potentials in the used in the greenhouse gas basket approach of the Kyoto protocol (Joos et al., 2013; Myhre et al., 2013). Another metric is the ~~transient climate response to cumulative carbon emissions~~ Transient Climate Response to cumulative CO₂ Emissions (TCRE), which links the global mean surface air temperature increase to the total amount of ~~carbon~~ CO₂ emissions. In addition to the physical climate response, these metrics also depend on the response of the carbon cycle and thus quantify the response uncertainties of both. TCRE is ~~an interesting a useful~~ metric because it has been shown that global warming is largely proportional to cumulative ~~carbon~~ CO₂ emissions and almost independent of the emission pathway (Allen et al., 2009; Matthews et al., 2009; Zickfeld et al., 2009; IPCC, 2013; Gillett et al., 2013). It essentially represents the combination of the TCR and the cumulative airborne fraction of CO₂ (~~Collins et al., 2013~~) (Gregory et al., 2009; Collins et al., 2013) . More recently, additional metrics, the equilibrium and multi-millennial climate response to cumulative CO₂ emission, have been proposed to evaluate the long-term link between global mean surface air temperature and emission (Frölicher and Paynter, 2015) .

There is an apparent discrepancy between the TCR estimated with the most recent set of Earth System Models (ESM) ~~vs. versus~~ some recent studies , suggesting that invoke observational constraints (Otto et al., 2013) and simplified models (Schwartz, 2012; Collins et al., 2013) . These latter studies suggest the possibility of a ~~low TCR~~ (~~Collins et al., 2013~~) TCR below 1 °C, i.e. outside the very likely range given in the Fourth Assessment Report of the IPCC (Collins et al., 2013) . Shindell (2014b, a) suggest that there are biases in simple models that do not adequately account for the spatial distribution of forcings. ~~He~~ Shindell found by analyzing ESM output that the transient climate sensitivity to historical aerosol and ozone forcing is substantially greater than to CO₂ forcing due to their spatial differences. Taking this into account resolves the discrepancies in TCR esti-

mates. Stainforth (2014) concluded from the study by Shindell (2014b) that probabilistic ~~twenty-first~~ 21st century projections based on simple models and observational constraints under-weight the possibility of high impacts and over-weight low impacts on multi-decadal timescales. Huber and Knutti (2014) find that the TCR and ECS of the ESMs are consistent with recent climate observations when natural variability and updated forcing data are considered. Kummer and Dessler (2014) concluded that considering a $\approx 33\%$ higher efficacy of aerosol and ozone forcing than for CO_2 forcing would resolve the disagreement between estimates of ECS based on the twentieth century observational record and those based on climate models, the paleoclimate record, and interannual variations. van der Werf and Dolman (2014) applied a multiple regression approach using historical temperature and radiative forcing data to find that recent temperature trends are influenced by natural modes of variability such as the Atlantic Multi-decadal Oscillation. They estimated TCR to be above 1°C using century-long records. Yet, an updated probabilistic quantification of the TCR, ECS, and TCRE with a spatially-explicit model and constrained by a broad set of observations is missing.

The goals of this study are (i) to establish the relation between cumulative CO_2 emissions and changes in illustrative, impact-relevant Earth System parameters, (ii) to quantify TCRE, TCR and ECS, and (iii) to establish the response of different Earth System parameters to an emission pulse, i.e. the Impulse Response Function. In analogy to TCRE, we introduce a new metric, the Transient Climate Parameter Response to cumulative CO_2 Emissions (TCPRE). TCPRE^X is the change in a climate parameter, X , in response to cumulative CO_2 emissions of 1000GtC . To this end, we analyzed TCPRE for variables that we deemed impact relevant and also reasonably well represented in our model including surface air temperature, sea surface temperature, sea level, ocean acidity, carbon storage in soils, and ocean overturning. The link and the linearity between the responses in the different variables and cumulative CO_2 emissions is investigated in a structured way with an observation-constrained model ensemble and a large set of emissions scenarios. This allows us not only to address the scenario uncertainty but also the model uncertainty. We quantify uncertainties related to specific greenhouse gas emission trajectories, i.e. scenario uncertainty, by analyzing responses to CO_2 emission pulses as well as to a set of 55 scenarios representing the evolution of carbon dioxide and other radiative agents. The response uncertainties for these scenarios are quantified with a ~ 1000 -member model ensemble constrained by 26 observational data sets in a Bayesian, Monte-Carlo-type framework with an Earth System Model of Intermediate Complexity. The model features spatially-explicit representations of land use forcing, vegetation and carbon dynamics, as well as physically consistent surface-to-deep transport of heat and carbon by a 3-D, dynamic model ocean, thereby partly overcoming deficiencies identified for box-type models used in earlier probabilistic assessments (Shindell, 2014b, a). This allows us also to reassess the probability density distribution, including best estimates and confidence ranges, for the Equilibrium Climate Sensitivity (ECS), the Transient Climate Response (TCR), and the Transient Climate Response to cumulative CO_2 Emissions (TCRE).

170 This paper is structured in the following way. In the methods section, first the modeling framework is introduced (section 2.1). Specific subsections deal with model parameter selection and sampling (2.1.1), observational constraints and the calculation of model skill scores (2.1.2), the procedure for model spin-up (2.1.3), scenario choices and model simulations (2.1.4). The following sections then cover the definition of TCRE and TCPRE^X (2.2), the calculation of probability density functions
175 (2.3) and how the linearity of the responses to cumulative CO₂ emissions is tested (2.4). Finally, we discuss the selection of the analyzed climate parameters (X) in section 2.5. In the results section, we first discuss the response in various climate parameters to CO₂ emission pulses of various magnitude to gain insight to which extent we may expect linearity in the response to emissions (section 3.1). In section 3.2, we present results for the TCPRE of the global mean surface air and surface ocean
180 temperatures, steric sea level rise, the Atlantic Meridional Overturning Circulation, global mean surface ocean pH, the saturation of surface waters in the Southern Ocean and the tropics with respect to calcium carbonate, as used to build coral reefs and shells and other structures of marine organisms, and finally global soil carbon stocks. In section 3.3, results for the transient and equilibrium climate sensitivity are presented. Discussion and conclusions complete the paper.

185 **2 Methods**

2.1 Modeling framework

We apply the Bern3D-LPJ model in a Bayesian, probabilistic, observation-constrained approach which is described in detail by Steinacher et al. (2013). Probabilistic assessments are widely used to determine probability distributions of
190 model parameters, climate sensitivity and many other climate parameters (e.g. Wigley and Raper, 2001; Knutti et al., 2002, 2003; Murphy et al., 2004; Knutti et al., 2005; Schleussner et al., 2014; Bodman et al., 2014). The Bern3D model was used in connection with an Ensemble Kalman Filter to constrain model parameters and regional air-sea carbon fluxes from observations (Gerber et al., 2009; Gerber and Joos, 2010, 2013). The Bern3D-LPJ is an Earth system Model of
195 Intermediate Complexity (EMIC) that consists of a three-dimensional dynamic ocean component (Müller et al., 2006; Parekh et al., 2008) including sea-ice (Ritz et al., 2011a), a two-dimensional energy and moisture balance model of the atmosphere (Ritz et al., 2011a, b), and a comprehensive terrestrial biosphere model with dynamic vegetation (Sitch et al., 2003), permafrost, peatland (Spahni et al., 2013), and land-use (Strassmann et al., 2008) modules.

200 We rely here on simulations presented by Steinacher et al. (2013) as ~~briefly~~ described in the following subsections and illustrated in Fig. 1. Uncertainties in physical and carbon-cycle model parameters, radiative efficiencies, climate sensitivity, and carbon-cycle feedbacks are taken into account by varying 19 key model parameters to generate a model ensemble with 5000 members (~~Table S1 in Steinacher et al., 2013~~) ~~–~~ (Table A1). Each ensemble member is assigned a skill score

205 based on how well the model version is able to represent the observational constraints. This skill score is used as a weight to compute probability density functions and ensemble means for different model outcomes.

2.1.1 Model parameter sampling

210 Nineteen model parameters are sampled for the generation of the model ensemble (Table A1). The selection of these parameters has to balance computational costs versus maximum coverage of the parameter space that is relevant for the model variables we are interested in.

215 Three parameters are sampled from the energy and moisture balance model of the atmosphere. Most important, the nominal equilibrium climate sensitivity (ECS) determines the equilibrium warming per change in radiative forcing. Technically, this is implemented by translating a given value for ECS to a value for the feedback parameter λ (Ritz et al., 2011a, b) using a calibration curve. λ accounts for all feedbacks in the model that are not explicitly resolved. Diffusivity coefficients, $\text{diff}_{\text{zonal}}$ and $\text{diff}_{\text{merid, scale}}$, control the depth-integrated heat fluxes (Ritz et al., 2011a, b). The uniform zonal diffusivity is specified directly and $\text{diff}_{\text{merid, scale}}$ is a scaling factor for the latitude-dependent meridional diffusivity.

220 The selection of the most relevant parameters for terrestrial photosynthesis, hydrology, vegetation dynamics, soil organic matter decomposition and turnover is largely based on a previous study by (Zaehle et al., 2005). They analyzed an earlier version of the model by sampling 36 parameters and identified the most important ones in controlling carbon fluxes and pool sizes. Perhaps not surprisingly, the most influential parameters either directly govern the input flux of carbon into a carbon pool or the time scale of carbon overturning for individual pools.

230 Four parameters are sampled that govern carbon assimilation and transpiration of water. These are a scaling parameter to upscale assimilation from the leaf to the canopy level (α_a), the intrinsic quantum efficiency of CO₂ uptake for C3 plants (α_{C3}), a shape parameter specifying the degree of co-limitation by light and Rubisco activity (θ), and a parameter that influences the link between canopy conductance and evapotranspiration (g_m), and thereby soil hydrology and water limitation of photosynthesis. These parameters were identified as the four most important ones controlling NPP and heterotrophic respiration and they are among the eight most important parameters controlling carbon pool sizes (Zaehle et al., 2005).

235 Two parameters are sampled that control the turnover of carbon in vegetation. These are the time scale governing the conversion of sapwood to heartwood (τ_{sapwood}) and the maximum mortality rate of trees (mort_{max}). Four parameters are sampled that govern the carbon turnover in mineral soils. The fractions f_{soil} and f_{slow} determine how much of decomposing litter enters the fast and slow overturning soil pools and how much is released directly to the atmosphere. $k_{\text{soil, scale}}$ is a global scaling factor applied to the spatial and temporal variable decomposition rates of organic carbon in the fast and slow soil pools. Litter and soil decomposition rates depend on soil temperature and

thus are influenced by global warming. The parameter governing the temperature sensitivity of these rates is also sampled. Finally, $C_{\text{peat, scale}}$ determines the initial amount of carbon stored in northern peatlands.

245 Three parameters are sampled from the Bern3D ocean component. diff_{dia} and diff_{iso} are the diapycnal and isopycnal diffusivities that control the ocean circulation and thus the transport and vertical mixing of heat, carbon, and other tracers (Müller et al., 2006; Schmittner et al., 2009). $k_{\text{gas, scale}}$ is a scaling factor applied to the OCMIP-2 air-sea gas transfer velocity field (Müller et al., 2008) and affects the oceanic uptake of anthropogenic carbon. The ocean carbonate chemistry and marine biology parameters are not perturbed in this study in order to save computational costs. The ocean chemistry is very well understood and the relevant parameters are already well constrained (Dickson, 2002). The marine biology parameters are considered of secondary importance for this study, and when compared to the parameters affecting the physical transport and uptake of anthropogenic carbon (Joos et al., 1999; Plattner et al., 2001; Heinze, 2004; Gangstø et al., 2008; Kwon et al., 2009).

250 Finally, two parameters were sampled to modulate the radiative forcing from well mixed greenhouse gases ($\text{RF}_{\text{GHG, scale}}$) and aerosols ($\text{RF}_{\text{aerosol, scale}}$). They are applied as scaling factors to the prescribed time series (or to the simulated radiative forcing in the case of atmospheric CO_2) and reflect the uncertainties given by Forster et al. (2007).

255 We generate a 5000-member ensemble from the prior distributions of those 19 key model parameters using the Latin hypercube sampling method (McKay et al., 1979). The prior distributions are selected such that the median matches the standard model configuration and the standard deviation is $\frac{1}{4}$ of the plausible parameter range based on literature and/or expert judgment (Table A1). Normal prior distributions are chosen for ranges that are basically symmetric with respect to the standard parameter value and log-normal priors are used for asymmetric ranges.

265 2.1.2 Observational constraints and the computation of skill scores

26 observation-based data sets are used to constrain the model ~~ensemble by assigning skill scores to each ensemble member.~~ results including projected Earth system changes, allowable carbon emissions to meet a climate target or metrics such as the transient and equilibrium climate sensitivity. A single skill score is computed by comparing observations and model outcomes for each ensemble member and across all data sets. The data sets are organized in a hierarchical structure to balance the weight of individual data sets and groups of data. The skill scores are used to weight results from individual ensemble members for the computation of ensemble mean and uncertainties (probability density function). Figure A1 summarizes the observation-based data sets and their hierarchical arrangement to compute skill scores (adapted from Fig. S3 and Table S2 in Steinacher et al., 2013).

275

The observational data sets combine information from satellite, ship-based, ice-core, and in-situ measurements to probe both the mean state and transient responses in space and time. The ~~data sets are organized in a hierarchical structure (Fig. S3 and Table S2 in Steinacher et al., 2013) with the four main groups “CO₂” (atmospheric record and ocean/land uptake rates), “Heat” (surface air~~
280 ~~temperature and ocean heat uptake), “Ocean” (3-D fields of seven physical and biogeochemical tracers), and “Land” (seasonal atmospheric CO₂ change, land carbon stocks, fluxes~~ energy balance and its change over time is probed by annual mean time series of Southern and Northern Hemisphere temperature from 1850 to 2010 (Brohan et al., 2006), of upper (0-700 m) ocean heat content anomalies from 1955 to 2011 (Levitus et al., 2012), and from 1993 to 2008 (Lyman et al., 2010) and
285 ~~the ocean heat uptake over the period 2005 to 2010 (von Schuckmann and Le Traon, 2011).~~ The atmospheric carbon balance is probed by the reconstructed atmospheric CO₂ history from ice cores (1850 to 1958; Etheridge et al., 1996) and direct atmospheric measurements (1959 to 2010; Keeling and Whorf, 2005; Conway and Tans, 2011) as well as global and temporal means of net carbon uptake by the land and by the ocean for the periods 1959 to 2006,
290 ~~and~~ 1990 to 1999, and 2000 to 2006 (Canadell et al., 2007). Oceanic processes, which are key for the uptake of both heat and carbon, are probed using gridded data from the World Ocean Atlas (Locarnini et al., 2010; Antonov et al., 2010; Garcia et al., 2010) and the Global Ocean Analysis Project (GLODAP Key et al., 2004); surface fields and whole ocean fields are considered separately for individual tracers. Ocean temperature (T) and salinity (S) fields probe the water
295 mass distribution and T and S influences CO₂ solubility and carbonate chemistry. The transient tracer CFC-11 (distribution for 1995) and radiocarbon (preindustrial) probe the ventilation time scales and thus the surface-to-deep transport rates for carbon, heat and other tracers. The marine biological cycle is probed by comparing modeled with observed fields of the major nutrient phosphate, as well as dissolved inorganic carbon (preindustrial) and alkalinity (1995).
300 Temperature, salinity and phosphate fields from the World Ocean Atlas include seasonal variations in the upper ocean. Land biosphere processes are constrained by comparing modeled and observation-derived carbon stocks and fluxes. Vegetation carbon stock data include two different data sets for about 140 sites each (Luyssaert et al., 2007; Keith et al., 2009) and an estimate for the global preindustrial inventory (550±200 Gt C; Prentice et al., 2001). Gridded soil carbon fields for
305 low and mid latitudes (south of 50°N; Global Soil Data Task Group, 2000) and high latitude North America (Tarnocai et al., 2009, 2007) and an estimate for the global soil carbon content in the top 100 cm (1950±550 Gt C; Batjes, 1996). Net primary productivity is probed using observation-based estimates from around 80 sites (Olson et al., 2001) and 140 sites (Luyssaert et al., 2007), and a gridded seasonal climatology of the fraction of absorbed ~~radiation~~ photosynthetic active radiation
310 (Gobron et al., 2006). Finally, we probe the seasonal cycle of the net terrestrial carbon balance by prescribing modeled net land-to-atmosphere fluxes in the TM2 transport model to compute

the average seasonal cycle of atmospheric CO₂ at nine sites as monitored by the GLOBALVIEW atmospheric CO₂ network (GLOBALVIEW-CO2, 2011) .

A hierarchical structuring of the data sets is applied for the computation of the skill scores.

315 Individual data sets consist of a single number, of site data, time series, as well as gridded two- and three-dimensional fields. The number of values included in a data set ranges from one to many thousands. In addition, different data sets sometimes probe closely related quantities. It is thus necessary to implement a formalism to avoid that the data sets with the largest number of data dominate the outcome. The task is to attribute a weight to each individual data set that is appropriate
320 in comparison with the other data sets. Here, this is done by organizing the data in a hierarchical structure for aggregating the scores of individual data sets to the total score. We consider four main data groups probing the energy balance, termed “Heat” in Fig. A1, the atmospheric carbon balance, “CO2”, ocean processes and inventories, “Ocean”, and land biosphere fluxes and stocks, “Land”. Each of these groups has the same weight for the computation of the overall skill scores.
325 The individual data sets are further arranged in additional subgroups.

From the simulation results over the historical period (“mod”) and the set of observational constraints (“obs”), we assign a score to each ensemble member m as $S_m \propto \exp(-\frac{1}{2} \frac{(X_m^{\text{mod}} - X^{\text{obs}})^2}{\sigma^2})$. This likelihood-type function basically corresponds to a Gaussian distribution of the data-model discrepancy ($X_m^{\text{mod}} - X^{\text{obs}}$) with zero mean and variance σ^2 , ~~which represents the combined model and~~
330 ~~observational error~~. The overbar indicates that the error-weighted data-model discrepancy is first averaged over all data points of each observational variable (volume or area-weighted) and then aggregated in the hierarchical structure by averaging variables belonging to the same group. 3931 out of the 5000 ensemble members contribute less than a percent to the cumulative skill $\sum_m S_m$ of all members m and are not used any further.

335 The variance σ^2 represents the combined observational error and model discrepancy and needs to be specified. The model discrepancy is the inherent model error that cannot be eliminated even with the best parameter settings and input data. While most of the observational data sets come with estimates of the observational errors, the model discrepancy is difficult to specify. Here we estimate the combined observational and model error with the variance of the model-data difference
340 for the best fitting model realisation (i.e. the model with the smallest mean squared error). In some few cases where the observational error is larger than this estimate (and thus the combined error is clearly underestimated), the observational error is taken as total error.

2.1.3 Spin-up procedure

The spin-up procedure for the 5000 ensemble members is tailored to keep computational costs low,
345 while at the same time achieving small model drift after completion of the spin-up. First, a very long spin-up over more than 20,000 years is carried out with standard model parameters and preindustrial (year 1800) boundary conditions. The spin-up is then continued for all individual members from this

initial steady-state to adjust the model to the perturbed parameters. In this way, the new equilibrium for the perturbed parameter set is reached faster than when starting from scratch.

350 The adjustment spin-up is done in a sequence where not all model components are active in all steps to further decrease the computational costs. First, the physical ocean component is run stand-alone for 1500 years. Then, the atmospheric energy balance model is coupled again to the ocean and the model is run for 1000 more years. Next, the oceanic biogeochemistry module is activated with initial tracer fields from the standard model configuration. The model is run for another
355 1000 years to allow the biogeochemical fields to adjust to the new physics. In parallel, the terrestrial component is run stand-alone for 400 years with the perturbed parameter settings, including an instantaneous adjustment of the soil carbon pools after 200 years by calculating the new pool sizes analytically from the adjusted fluxes. Finally, the fully coupled model is run for another 200 years and all transient simulations are started from this state.

360 The reliability of the spin-up procedure is verified by performing a 500 year long control run without additional forcing and checking for unacceptable drift. Slight drifts in deep ocean tracers are accepted.

Modern peat carbon stocks are not in equilibrium with the current climate and boreal peatlands still sequestered about 0.1 Gt C yr^{-1} during the last millennium
365 (Charman et al., 2013; Yu et al., 2010). Peat carbon distribution for our transient simulations is initialized with the output from a transient simulation starting at the Last Glacial Maximum as described in Spahni et al. (2013). This initial pattern, and thus the total peat carbon inventory, is uniformly scaled with the value sampled for the parameter $C_{\text{peat, scale}}$.

After the spin-up, the 5000 member ensemble is run over the industrial period under prescribed
370 CO_2 and non- CO_2 forcing. The model output is compared with the observational data and the ensemble is reduced to the 1069 simulations with the highest skill, as described in the previous section.

2.1.4 Model simulations

In a next step we run the constrained model ensemble for 55 greenhouse gas scenarios spanning from
375 high business-as-usual to low mitigation pathways. The set of scenarios consists of economically feasible multi-gas emission scenarios from the integrated assessment modeling community. In addition to the four RCP scenarios (Moss et al., 2010) that were selected for the **fifth assessment report** [Fifth Assessment Report \(AR5\)](#) of the IPCC, we included 51 scenarios from the EMF-21 (Weyant et al., 2006), GGI (Grübler et al., 2007), and AME (Calvin et al., 2012) projects. For these simula-
380 tions, we prescribe atmospheric CO_2 and the non- CO_2 radiative forcing derived from the emission scenarios (Fig. A2) as described in Joos et al. (2001) and Strassmann et al. (2009). We note that the AME scenarios are less complete than the others because they do not provide emission paths for aerosols and some minor greenhouse gases. We therefore make the conservative assumption of

constant aerosol emissions at the level of the year 2005 (-1.17 Wm^{-2}), which implies a significant
385 cooling effect continued into the future in ~~these scenarios~~ those 23 (out of 55) scenarios (Fig. A2f).
Please note that this effect does not affect our estimates of TCR, ECS and TCRE, which are based on
the atmospheric CO₂-only simulations described below, nor the constraining of the model ensemble
with observation-based data over the historical period. The scenarios are extended from 2100 to 2300
by stabilizing atmospheric CO₂ and the non-CO₂ forcing by the year 2150 (see Steinacher et al.,
390 2013, for details). Please note that the extensions of the RCP scenarios beyond 2100 CE as used in
the AR5 (Extended Concentration Pathways, ECP; Meinshausen et al., 2011) are not identical to the
extensions applied here. Our extensions of RCP4.5 and RCP6 are similar to ECP4.5 and ECP6, but
ECP8.5 differs significantly from our extension of RCP8.5, where atmospheric CO₂ is stabilized by
2150.

395 In addition to these multi-gas scenarios used by Steinacher et al. (2013), we run the model ensemble
for an idealized “2xCO₂” scenario to determine TCR ~~and ECS~~, ECS, and TCRE and an emission
pulse experiment. In the 2xCO₂ simulation, atmospheric CO₂ is increased by 1 % yr⁻¹ from
~~preindustrial levels~~ its preindustrial level until a doubling of the concentration is reached. After that,
the atmospheric CO₂ concentration is held fixed. All other forcings remain constant at preindustrial
400 levels. The emission pulse simulations are conducted as described by Joos et al. (2013). A pulse
input of 100 Gt C is added to a constant background atmospheric CO₂ concentration of 389 ppm in
year 2010, while all other forcings are held constant at 2010 levels. The impulse response function
(IRF) is then derived from the difference between simulations with and without emission pulse. Ad-
ditionally, experiments with pulse sizes of 1000, 3000, and 5000 Gt C were performed to test the
405 sensitivity of the response to the pulse size. These additional pulse experiments were run for a model
configuration with median parameter settings, which is able to reproduce the median response of the
ensemble for the 100 Gt C pulse (Fig. 2).

2.2 ~~Different definitions~~ Definition of TCRE and ~~calculation of probability density~~ ~~functions~~ TCRE^x

410 There are slightly different ~~definition of TCRE. Matthews et al. (2009) defines~~ definitions of
the Transient Climate Response to cumulative CO₂ Emissions (TCRE) in the literature.
Matthews et al. (2009) define it similar to the ~~TCR~~ Transient Climate Response (TCR), i.e. as the
ratio of warming to cumulative CO₂ emissions in a simulation with prescribed 1 % yr⁻¹ increase in
atmospheric CO₂ at the time when atmospheric CO₂ reaches double its preindustrial concentration.
415 In the Fifth Assessment Report (AR5) of the IPCC, on the other hand, TCRE is defined more gener-
ally as the annual mean global surface temperature change per unit of cumulated CO₂ emissions in
a scenario with continuing emissions (Collins et al., 2013). In scenarios with non-CO₂ forcings, such
as the representative concentration pathways (RCPs), the diagnosed TCRE thus also depends on the
non-CO₂ forcing. Further, the transient response should be distinguished from the peak response to

420 cumulative emissions as defined in Allen et al. (2009), although the TCRE is nearly identical to the peak climate response to cumulative carbon-CO₂ emissions in many cases (Collins et al., 2013).

~~In this study, the transient and peak responses per cumulative~~ The responses, TCR and TCRE, are defined for surface air temperature in previous studies. Here, we extend the definition of TCRE to any climate variable $X(t)$. We define the transient response, TCPRE^X , and peak response, $\text{TCPRE}_{\text{peak}}^X$,

425 ~~per cumulative CO₂ emissions at a given time t are defined as:~~

$$\text{TCRE} \text{TCPRE}^X(t) = \frac{X(t)}{E(t)} \quad (1)$$

$$\text{TCRE} \text{TCPRE}_{\text{peak}}^X(t) = \frac{\max_{t' \leq t}(X(t'))}{E(t)} \frac{X(t_{\max})}{E(t)} \text{ with } t_{\max} : |X(t_{\max})| = \max_{t' \leq t}(|X(t')|), \quad (2)$$

where $X(t)$ is one of the target variables (e.g. global mean surface temperature change) and $E(t)$ are the cumulative CO₂ emissions (either total or fossil-fuel only emissions; see Sect. A). Appendix).

430 For the transient response analyses, ~~TCRE(t) is taken into account~~ $\text{TCPRE}^X(t)$ is computed for every year t in the range $2000 < t \leq 2300$ (i.e. 300 data points per simulation), ~~whereas~~. In contrast, the peak response is ~~evaluated only once at the end of a simulation~~ represented by only one data point per simulation. It is the value of $X(t)$ at the time t_{\max} , i.e. ~~TCRE_{peak}($t=2300$)~~ where the maximum change in the absolute value of $X(t)$ between the years 2000 and 2300 occurs, divided by
435 ~~the cumulative emissions in the year 2300, $E(t=2300)$, and denoted $\text{TCPRE}_{\text{peak}}^X(t=2300)$. Please note that the actual peak response might occur after 2300 CE, in which case $\text{TCPRE}_{\text{peak}}^X$ is only an approximation. Surface air temperature usually peaks before 2300 CE in the applied scenarios. Steric sea level rise, on the other hand, continues to increase after 2300 CE due to the large thermal inertia of the oceans.~~

440 ~~TCRE is used in this study as defined by Gillett et al. (2013). Thus, TCRE is equivalent to $\text{TCPRE}^{\Delta\text{SAT}}$ derived from a simulation with prescribed $1\% \text{ yr}^{-1}$ atmospheric CO₂ increase and no other forcings.~~

2.3 Calculation of probability density functions

Cumulative carbon-CO₂ emissions $E_{m,s}(t)$ and climate response $X_{m,s}(t)$ are diagnosed for each
445 model configuration $1 \leq m \leq N_m$ ($N_m = 1069$), greenhouse-gas scenario $1 \leq s \leq N_s$ ($N_s = 55$), and simulation year $2000 < t \leq 2300$. For ~~each a given~~ model configuration m and year t we obtain 55 points in the two-dimensional (E, X) -space, representing the response under different scenarios ($E_{m,s}(t)$), ~~the plausible range of X for a given E is then derived from $X_{m,s}(t)$~~ . These points are considered to span the range of plausible emission-response combinations for this model
450 configuration. Technically, we use the convex hull of the points $(E_{m,s}(t), X_{m,s}(t))$ for the different scenarios s (and different years t in the case of the transient response). By adding which is the smallest region containing all points such that, for any pair of points within the region, the straight line segment that joins the pair of points is also within the region.

By combining the convex hulls from all model configurations m in the (E, X) -space, weighted by the model score S_m , and normalizing the resulting field for each E , the relative probability map $p_{\text{rel}}(E, X)$ is calculated: we can derive a two-dimensional probability density function (PDF), $p(E, X)$, of the plausible emission-response combinations. The model ensemble is constrained in this step by weighting the contribution of an individual model to the PDF with the model score S_m :

$$p_{\text{rel}}(E, X) = \frac{p(E, X)}{\max_X(p(E, X))} p(x, y) = \sum_m \theta_m(x, y) S_m \quad (3)$$

$$\theta_m(x, y) = \begin{cases} 1, & \text{if } (x, y) \in C(\{(E_{m,s}, X_{m,s}), s = 1, \dots, N_s\}) \\ 0, & \text{otherwise,} \end{cases} \quad (4)$$

where $C(P)$ denotes the convex hull of the set of points P . For given emissions E , finally, the resulting field is normalized for each emission E to obtain the relative probability map $p_{\text{rel}}(E, X)$ represents the probability density function, as shown e.g. in Fig. 3a:

$$p_{\text{rel}}(E, X) = \frac{p(E, X)}{\max_X(p(E, X))} \quad (5)$$

Alternatively, $p(x, y)$, is normalized by its integral

$$p_{\text{norm}}(E, X) = \frac{p(E, X)}{\int_{-\infty}^{\infty} p(E, X) dX}, \quad (6)$$

which then represents the PDF of the response in X to these emissions for given emissions E . The probability that the change X remains smaller than a target value, X_{target} , given emission E is then in percent:

$$p_{\text{cum}}(E, X_{\text{target}}) = \int_{-\infty}^{X_{\text{target}}} p_{\text{norm}}(E, X) dX \cdot 100\% \quad (7)$$

The allowable CO₂ emissions, $E_{\text{allowable}}$, to not exceed the climate target X_{target} with a probability of 68% is then implicitly given by $p_{\text{cum}}(E, X_{\text{target}}) = 68\%$.

2.4 Testing the linearity of the response

From the probability maps in the (E, X) space, probability density functions are extracted at $E =$ 1000, 2000, and 3000 Gt C. To compare the response at different emission levels the PDFs at 2000 and 3000 Gt C are rescaled to the response per 1000 Gt C. In a perfectly linear system we would expect that the rescaled PDFs are identical for the different emission levels. To test the linearity of the response further, we fit a linear function $\hat{X}(E) = a_X \cdot E$ $\hat{X}(E) = a_{X,w} \cdot E$ to the points $(E_{m,s}(t), X_{m,s}(t))$ for each model configuration m . The linear function is forced through zero

480 because we require $X(E = 0) = 0$ at preindustrial ($t = 1800$). From the obtained coefficients $a_{X,m}$ of the model ensemble, we then calculate a PDF for the sensitivity a_X of the response to cumulative emissions under the assumption that a linear fit is reasonable. The goodness of fit is quantified by the correlation coefficients, r_m , and standard errors of the regression, $\sigma_m = \sqrt{\frac{\sum_s (X_{m,s} - \hat{X}(E_{m,s}))^2}{N_s}}$, for each model setup m . In Table 2, the ensemble median and 68 %-range of a_X , of r_m , as well as
485 the ensemble median standard error (expressed as as percentage of the median linear slope), $\hat{\sigma}$, are reported.

2.5 ~~Total vs. fossil-fuel only carbon emissions~~ Selection of the climate parameters for analysis and computation of TCPRE

~~Many studies report TCRE~~ We compute TCPRE^X and Impulse Response Functions (see section 3.1)
490 for eight climate parameters. These are represented by the emission-driven changes in the model variables global mean surface air temperature (Δ SAT), surface ocean temperature (Δ SST), steric sea level rise (SSLR), the Atlantic Meridional Overturning Circulation (Δ AMOC), global mean surface ocean pH (Δ pH), saturation of surface waters in the Southern Ocean ($\Delta\Omega_{\text{arag,S.O.}}$; south of 50° S) and the tropics ($\Delta\Omega_{\text{arag,trop.}}$; 30° N to 30° S) with respect to “cumulative total anthropogenic
495 CO₂ emissions” (e.g. IPCC, 2013; Allen et al., 2009; Meinshausen et al., 2009), not distinguishing between fossil-fuel emissions and emissions from land-use changes. Here, we use a model that explicitly simulates terrestrial carbon fluxes, including those from land-use changes. Thus the diagnosed carbon emissions obtained by closing the global carbon budget to match the prescribed atmospheric concentration in the scenarios correspond to fossil-fuel emissions only. In order to estimate total emissions in our simulations, direct land-use emissions (i.e. carbon from vegetation that is removed due to land-use changes) are instantaneously added to the diagnosed fossil-fuel emissions. The delayed emission of carbon from deforestation via product and litter pools as well as indirect land-use change effects such as the losses of terrestrial sink capacity (Strassmann et al., 2008) or from the abandonment of land-use areas are simulated by the model, but
500 they are not included in the estimate of total carbon emissions because this would require additional simulations. Shifting cultivation (Stocker et al., 2014) has not been considered in this study. Results in calcium carbonate in the mineral form of aragonite, and global soil carbon stocks (Δ C_{soil}). These variables are deemed both impact relevant and reasonably well represented in the Bern3D-LPJ Earth System Model of Intermediate Complexity. We stress the illustrative nature of this selection.
505 TCPRE^X may be computed for other climate parameters and regions in future work. In particular the determination of TCPRE^X for extreme events, such as droughts, heat waves, and floods, or for food production and fishery may be relevant for policy-makers and stakeholders.

Changes in SAT and sea level are known to impact biological and physical systems (e.g. IPCC, 2014; Sherwood and Huber, 2010). Sea level rise is expected to affect coastal

515 ecosystems such as mangroves, to reduce coastal protection, and increase flood occurrence possibly
affecting hundred millions of people living in low-lying cities and along the coast.

~~The uptake of CO₂ by the present study are mostly given as a function of total (fossil-fuel~~
~~plus deforestation) and, where indicated, additionally as a function of fossil-fuel emissions~~ocean
fundamentally changes the chemical composition of ocean waters (Orr, 2011), generally referred to
520 as “ocean acidification”. The reaction of dissolved CO₂ with H₂O to H₂CO₃ and the dissociation
of the latter lead to an increase in the hydrogen ion concentration (H⁺), and a decrease in pH
(pH=-log[H⁺]), and, through shifting acid-base equilibria, to a decrease in the concentration of
carbonate ions, CO₃²⁻. The decrease in CO₃²⁻ is associated with a decrease in the saturation state of
water with respect to calcium carbonate (CaCO₃).

525 Ocean acidification in conjunction with warming waters poses large risks to marine species,
marine ecosystems such as corals, sea grass meadows, and marine ecosystem services such as
tropical fisheries (e.g. Gattuso et al., 2015; Howes et al., 2015). Warming waters affect the aerobic
scope of marine organisms and constrain marine habitats (Deutsch et al., 2015; Pörtner et al., 2011).
The saturation state of water with respect to aragonite and other mineral forms of calcium
530 carbonate determines whether water is corrosive (in the absence of protective mechanisms)
to shells and structures made out of calcium carbonate. Model projections reveal large and
sustained changes in the saturation state of surface and deep waters for a range of emission
scenarios (Orr et al., 2005; Joos et al., 2011). Waters in the Arctic Ocean, in coastal upwelling
zones, and the Southern Ocean are becoming increasingly undersaturated with respect to aragonite
535 (Steinacher et al., 2009; Gruber et al., 2012) and ongoing changes in saturation state are largest in
the tropics, possibly adversely affecting net calcification rates of coral systems.

The AMOC contributes to the net heat transport into the North Atlantic region and changes in the
AMOC may affect climate patterns in Europe and worldwide. Paleo data reveal a southward shift
of the Inner Tropical Convergence Zone linked to a decrease or collapse of the AMOC with related
540 terrestrial ecosystem impacts (e.g. Bozbiyik et al., 2011). Finally, changes in the global soil carbon
inventory may be taken here as an indication of the strength of the land carbon-climate feedback as
well as a very rough proxy for soil fertility.

3 Results

3.1 Climate response to ~~an~~ a CO₂ emission pulse: testing the linearity of the 545 emission-response relationship

In a first step, we explore how different climatic variables respond to a pulse-like input of carbon into the atmosphere (Fig. 2) ~~-Impulse Response Functions~~ and determine the so-called Impulse Response
Function (IRF) for the different climate parameters. The IRF experiments provide a framework
to discuss path-dependency and linearity in responses without the need to run many independent

550 scenarios. IRFs for atmospheric CO₂, SAT, steric sea level rise (SSLR), and ocean and land carbon uptake are given elsewhere and we refer the reader to the literature for a general discussion on IRFs, underlying carbon cycle and climate processes, and time scales (e.g. Archer et al., 1998; Joos et al., 2013; Maier-Reimer and Hasselmann, 1987; Shine et al., 2005).

555 A main goal of this section on IRF is to discuss to which extent one may expect a close-to-linear relationship between cumulative CO₂ emissions and a climate parameter of interest. A linear relationship between emissions and parameter X has the advantage that the determination of TCPRE ^{X} does not depend on the choice of scenario nor the magnitude of CO₂ emissions. In addition, TCPRE ^{X} would, in the case of linearity, fully describe the parameter response to any CO₂ emissions. We start with a description of the model setup, followed by theoretical considerations,
560 then discuss linearity in the context of CO₂-only scenario uncertainty by analyzing median model responses, then turn to the response uncertainty by relying on the full model ensemble and compare scenario and response uncertainty. Finally, we briefly address the scenario uncertainty due to non-CO₂ forcing.

3.1.1 Model simulations to determine IRFs

565 CO₂ is added instantaneously to the model atmosphere to determine IRFs. This results in a sudden increase in atmospheric CO₂ and radiative forcing. Afterwards, the evolution in the perturbation of atmospheric CO₂ and in any climate variable of interest, e.g. global mean surface air temperature, is monitored in the model. The resulting curve is the impulse response function (Fig. 2). Here, 1069 runs were carried out in different model configurations by adding emissions of 100 Gt C to an
570 atmospheric CO₂ background concentration of 389 ppm, which corresponds to the concentration in the year 2010. Additionally, simulations with emission pulses of 1000, 3000 and 5000 Gt C were run for a median model configuration (Methods). For comparability, all IRFs are normalized to a carbon input of 100 Gt C.

~~The motivation~~

575 3.1.2 The link between IRF and TCPRE: theoretical considerations

The motivation to analyze IRFs is two-fold. First, the dynamic of a linear (or approximately linear system) is fully characterized by its response to a pulse-like perturbation, i.e., the response of variable X at year t to earlier annual emissions, e , at year t' can be represented as the weighted sum of all earlier annual emissions. The weights are the values of the IRF curve at emission age $t - t'$:

$$580 \quad X(t) = \sum_{t'} e(t') \cdot \text{IRF}(t - t'), \quad (8)$$

where the sum runs over all years t' with annual emissions up to year t . IRFs thus provide a convenient and comprehensive quantitative characterization of the response of a model. IRFs form also the basis for the metrics used to compare different greenhouse gases in the Kyoto basket approach

and to compute CO₂ equivalent concentrations (Joos et al., 2013; Myhre et al., 2013) and are used
 585 to build substitute models of comprehensive models (Joos et al., 1996). Second and relevant for the
~~TCRE~~~~TCPRE~~ and for this study, IRFs allow us to ~~gage~~~~gauge~~ whether there is a roughly linear
 relationship between cumulative ~~carbon~~~~CO₂~~ emissions

$$E(t) = \sum_{t'} e(t') \quad (9)$$

and the change in a climate variable of interest, $X(t)$. The transient ~~climate~~ response for variable X
 590 to cumulative ~~carbon~~~~CO₂~~ emissions is in this notation:

$$\text{TCRE}\text{TCPRE}^X(t, X) = \frac{X(t)}{E(t)} \quad (10)$$

We note that there is a close relationship between Eqs. (8) to (10) and thus between cumulative
~~carbon~~~~CO₂~~ emissions $E(t)$, response $X(t)$ and ~~TCRE~~~~TCPRE~~ ^{X} . The IRF provides the link between
 these quantities.

595 Three conditions are to be met for a strict linear relationship between cumulative ~~carbon~~~~CO₂~~
 emissions E and response X for any emission pathway: (i) the response is independent of the mag-
 nitude of the emissions, ~~and~~ (ii) the response is independent of the age of the emission, i.e., the
 time passed since emissions occurred. ~~In~~ (in this case the IRF and the ~~TCRE~~~~response~~ ~~TCPRE~~ ^{X} is
 a constant and all emissions are weighted equally in Eq. (8), ~~and~~ (iii) non-CO₂ forcing factors play
 600 no role; a point that will be discussed later [in section 3.1.4](#). While these conditions are not fully met
 for climate variables, they may still approximately hold for plausible emission pathways. For the
 range of RCP scenarios, the mean age of the ~~carbon~~~~CO₂~~ emissions varies between a few decades
 to hundred years for the industrial period and up to year 2100, then it increases up to 300 years until
 2300 ~~AD~~~~CE~~ (Fig. 2c). More than half of the cumulative ~~carbon~~~~CO₂~~ emissions have typically an
 605 age older than 30 years (Fig. 2c). If the IRF curve is approximately flat after a few decades and
 independent of the pulse size, then the vast majority of emission is weighted by a similar value in
 Eq. (8). Consequently, the relationship between response $X(t)$ and cumulative emissions, $E(t)$ is
 approximately linear and path-independent. This response sensitivity per unit emission, $X(t)/E(t)$,
 corresponds to an “effective” (emission-weighted) mean value of the IRF and is the ~~TCRE~~~~transient~~
 610 ~~response to cumulative CO₂ emissions~~ ~~TCPRE~~ ^{X} . Indeed, the IRF for many variables varies within
 a limited range after a few decades (Fig. 2). Then, an approximately linear relationship between $E(t)$
 and $X(t)$ holds and ~~TCRE~~~~TCPRE~~ ^{X} is approximately scenario-independent.

3.1.3 ~~IRFs: median results~~

The median values of the (normalized) IRFs (Fig. 2, solid and dashed lines) ~~for global mean surface~~
 615 ~~air temperature (SAT), surface ocean pH, steric sea level rise (SSLR) and Atlantic Meridional~~
~~Overturning (AMOC; Table 1)~~ vary within a limited range over the period from 30 year to the
 end of the simulation (500 year) and for the different pulse sizes of 100 to 3000 Gt C ~~for global mean~~

surface air temperature (SAT), surface ocean pH, Atlantic Meridional Overturning (AMOC), and to a somewhat lesser degree for steric sea level rise (SSLR). Consequently, we expect a close-to-linear

620 relationship between these variables and cumulative ~~carbon~~-CO₂ emissions.

For a given pulse size, the median of the IRF for the saturation with respect to aragonite in the tropical ($\Omega_{\text{arag, trop.}}$) and Southern Ocean ($\Omega_{\text{arag, S.O.}}$) surface waters and for the global soil carbon inventory varies within a limited range. However, the normalized IRFs for these variables vary substantially with the magnitude of the emission pulse. Thus, we expect a non-linear relationship between the

625 ensemble median responses and cumulative ~~carbon~~-CO₂ emissions for these quantities.

The atmospheric CO₂ perturbation declines by about a factor of two within the first 100 years for an emission pulse of 100 GtC. This means that the atmospheric CO₂ concentration at a specific time depends strongly on the emission path of the previous 100 years. In addition, the IRF differ for different pulse sizes because the efficiency of the oceanic and terrestrial carbon sinks decreases

630 with higher atmospheric CO₂ concentrations and warming. The fraction remaining airborne after 500 years is about 75 % for a pulse input of 3000 GtC, about 2.5 times larger than the fraction remaining for a pulse of 100 GtC (Fig. 2a). Thus, we do not expect a scenario-independent, linear relationship between atmospheric CO₂ and cumulative emissions.

At first glance, it may be surprising that the responses in SAT, SSLR, AMOC, and pH do not

635 much depend on the size of the emission pulse given the strong sensitivity of the atmospheric CO₂ response to the pulse size. For the physical variables, this is a consequence of near-cancellation of non-linearity in the carbon cycle and in the relationship between radiative forcing and atmospheric CO₂ (Joos et al., 2013). The long-term response in atmospheric CO₂ (Fig. 2a) increases with increasing emissions and the fraction remaining airborne is substantially larger for large than for

640 small emission pulses. On the other hand, radiative forcing depends logarithmically on atmospheric CO₂ and the change in forcing per unit change in CO₂ is smaller at high than at low atmospheric CO₂ concentrations. As a consequence, the response in radiative forcing is rather insensitive to the magnitude of the emission pulse and so is the response in climate variables forced by CO₂ radiative forcing. A similar effect applies for pH. Changes in dissolved [CO₂] and [H⁺] in the surface ocean

645 closely follow changes in atmospheric CO₂ as the typical time-scale to equilibrate the ocean mixed layer with an atmospheric CO₂ perturbation is of the order of a year and because changes in [H⁺] are roughly proportional to [CO₂] (Orr, 2011). pH is by definition the (negative) logarithm of the H⁺ concentration. As for radiative forcing, non-linearities in the CO₂ and thus H⁺ response roughly cancel when applying the logarithm to compute pH.

650 **3.1.4 Response versus scenario uncertainty**

The Monte-Carlo IRF experiments allow us also to assess the response or model uncertainty (Fig. 2, orange range). The 90 % confidence range in the IRF are substantially larger than the variation of the (normalized) median IRF for the variables SAT, SSLR, AMOC, and soil carbon inventory.

Consequently, the model uncertainty will dominate the uncertainty in TCRE-TCPRE^X and is larger than uncertainties arising from dependencies on the carbon emission pathway. On the other hand, the response uncertainty from our 5000-1069 Monte Carlo model setups are more comparable to the variation in the median IRFs for atmospheric CO₂, and surface water saturation with respect to aragonite in the tropical ocean and Southern Ocean.

~~In summary, we expect close-to-linear relationship between cumulative carbon emissions and SAT, surface ocean pH, SSLR and AMOC, and less well expressed linear behavior for global soil carbon and surface water saturation with respect to aragonite. Uncertainty in the response dominate the uncertainty arising from path dependency for SAT, SSLR, AMOC, and soil carbon.~~ In addition to the path dependency and the response uncertainty in TCRE-TCPRE^X discussed above, forcing from non-CO₂ agents will affect the TCRE-TCPRE^X . We expect a notable influence of non-CO₂ agents on the physical climate variables SAT, SSLR, and AMOC. For example, Strassmann et al. (2009) attributed simulated surface warming to individual forcing components for a range of mitigation and non-mitigation scenarios. They find that non-CO₂ greenhouse gas forcing causes up to 50 % as much warming as CO₂ forcing and that the non-CO₂ forcing is only partly offset by aerosol cooling by 2100. On the other hand, we expect a small influence of non-CO₂ forcing on pH and saturation state which is predominantly driven by the atmospheric CO₂ perturbation (Steinacher et al., 2009; McNeil and Matear, 2007).

3.2 Climate response to cumulative carbon emissions

~~In summary, uncertainty in the response dominate over the uncertainty arising from path dependency for SAT, SSLR, AMOC, and soil carbon. For CO₂-only or CO₂-dominated scenarios, we expect close-to-linear relationship between cumulative CO₂ emissions and SAT, surface ocean pH, AMOC, and to some extent for SSLR. In other words, the concept of TCPRE^X should work particularly well for these parameters. On the other hand, less well expressed linear behavior is found for global soil carbon and surface water saturation with respect to aragonite. In the next step, we section, we will elaborate on these findings and quantify TCPRE^X .~~

3.2 The Transient Climate Parameter Response to cumulative CO₂ Emissions

We investigate the response in multiple climate variables, $X(t)$, as a function of cumulative carbon-fossil or total CO₂ emissions $E(t)$. We ~~ran-used~~ the model ensemble presented in Steinacher et al. (2013) for 55 multi-gas emission scenarios from the integrated assessment modeling community which range from very optimistic mitigation to high business-as-usual scenarios (Steinacher et al., 2013, Methods) (Methods). From those simulations we determine the transient response to cumulative carbon emissions $\text{TCRE}(t') = X(t')/E(t')$ CO₂ emissions $\text{TCPRE}^X(t) = X(t)/E(t)$ (Tables 2 and A2; Figs. 3–5). In addition, we

also present results for the peak response $\text{TCRE}_{\text{peak}}(t=2300) = \max_{t'}(X(t')/E(t=2300))$
 $\text{TCPRE}_{\text{peak}}^X(t=2300) = \max_{t'}(X(t')/E(t=2300))$ (Tables 2 and A2, Fig. 3).

690 The discussion of results is guided by the results shown in Figs. 3 to 5. These show the relative probability of change in the parameter X for given cumulative CO_2 emissions (e.g., colors in Fig. 3a) together with the linear regression slopes (black dashed lines). These graphs allow one to visually inspect the linearity in response to cumulative CO_2 emissions and results include both scenario and response uncertainty. In accompanying panels (e.g., Fig. 3b), the focus is on scenario uncertainty
695 versus response uncertainty. The relationship between change and cumulative emissions is plotted for the ensemble median and for the 55 scenarios (55 colored lines). In addition, the 68% and 90% confidence interval for the response (or model) uncertainty is given for one scenario, RCP8.5, by red dashed and dotted lines. These graphs allow one to infer scenario and response uncertainty individually.

700 $\text{TCPRE}_{\text{peak}}^{\Delta\text{SAT}}$: We find a largely linear relationship between cumulative ~~carbon- CO_2~~ emissions and both transient and peak warming (Fig. 3a and ~~bc~~) for the set of emission scenarios considered here. ~~The fact that the results for the transient and peak warming are very similar confirms~~ These linear relationships confirm the finding from the pulse experiment above, i.e. that the response in the global SAT change is largely independent from the pathway of ~~carbon- CO_2~~ emissions in our model. We

705 note, however, that some low-end scenarios show a non-linear behavior due to non- CO_2 forcing (Fig. 3**eb**). Some AME scenarios show a decrease in temperature due to a strong reduction in the non- CO_2 forcing while cumulative emissions continue to increase slightly. Other scenarios (mostly from GGI) deviate from the linear relationship when negative emissions decrease the cumulative emissions while the increased temperature is largely sustained. These non-linearities are evident as

710 large changes in the slope between SAT and cumulative emissions towards the end of the individual simulations, that is after ≈ 2150 ~~AD when CE when atmospheric~~ CO_2 is stabilized and ~~carbon-~~emissions are low (Fig. 3b). Yet those deviations are not large enough to eliminate the generally linear relationship found for this set of scenarios.

The projected warming for a given amount of ~~carbon- CO_2~~ emissions is associated with a considerable uncertainty which increases with higher cumulative emissions. This uncertainty arises from
715 both, the response uncertainty of the model ensemble such as the uncertain climate sensitivity or oceanic carbon uptake, as well as from the scenario uncertainty. The scenario uncertainty is mainly due to different assumptions for the non- CO_2 forcing in the scenarios. The AME scenarios, for example, assume a relatively strong negative forcing from aerosols which leads to a consistently
720 smaller warming than in the other scenarios (Fig. 3**eb**). The response and scenario uncertainty appear to be of the same order of magnitude (Fig. 3**eb**).

The median transient response is $1.92.0^\circ\text{C}(\text{Tt C})^{-1}$ ($1.1\text{--}3.4^\circ\text{C}(\text{Tt C})^{-1}$ 68% confidence interval) evaluated at 1000 Gt C total emissions and similar for 2000 and 3000 Gt C. The median peak warming response is slightly larger. It is $2.3^\circ\text{C}(\text{Tt C})^{-1}$ ($1.5\text{--}3.8^\circ\text{C}(\text{Tt C})^{-1}$ 68% confidence

725 interval) for scenarios with 1000 GtC total emissions and decreases slightly to $1.9\text{ }^{\circ}\text{C}(\text{Tt C})^{-1}$
($1.3\text{--}2.7\text{ }^{\circ}\text{C}(\text{Tt C})^{-1}$ 68 % c.i.) for scenarios with 3000 GtC total emissions (Fig. 3d; [Table 2](#)).
The corresponding responses to fossil-fuel emissions only are accordingly somewhat higher, e.g.
2.2 $^{\circ}\text{C}(\text{Tt C})^{-1}$ ($1.3\text{--}3.8\text{ }^{\circ}\text{C}(\text{Tt C})^{-1}$) for the transient response evaluated at 1000 GtC fossil emis-
sions (Fig. A3, Table A2).

730 We fitted a linear function through zero to the results of each ensemble member and then
calculated the probability density functions from the individual slopes. The median slope is
 $1.8\text{ }^{\circ}\text{C}(\text{Tt C})^{-1}$ ($1.1\text{--}2.6\text{ }^{\circ}\text{C}(\text{Tt C})^{-1}$) for the peak response and values are similar for the tran-
sient response (Table 2). These slopes are somewhat lower than the direct results but in general the
linear regression approach is able to reproduce the distribution of the peak and transient warming
735 response per 1000 GtC [carbon-CO₂](#) emissions, although the confidence interval is narrower and the
long tail of the distribution might be underestimated.

[TCRE](#): Following Matthews et al. (2009) and Gillett et al. (2013), we also determined the TCRE
for our model ensemble from scenario where atmospheric CO₂ is increasing by $1\text{ }\% \text{ yr}^{-1}$ un-
til twice the preindustrial concentration is reached. No other forcing agents are included. Cor-
740 respondingly, we find a slightly lower median TCRE of $1.7\text{ }^{\circ}\text{C}(\text{Tt C})^{-1}$ ($1.3\text{--}2.3\text{ }^{\circ}\text{C}(\text{Tt C})^{-1}$
68 % c.i.; $1.0\text{--}2.7\text{ }^{\circ}\text{C}(\text{Tt C})^{-1}$ 5–95 % c.i.) than for the [SAT response in the](#) multi-agent scenar-
ios. [The 68 % c.i. includes the scenario uncertainty range in TCRE \(1.5 to 2.0 °C\) obtained by](#)
[Herrington and Zickfeld \(2014\) with a single model setup and for a range of CO₂-only scenarios](#)
[\(with constant future non-CO₂ forcing\)](#). Gillett et al. (2013) report a TCRE of $0.8\text{--}2.4\text{ }^{\circ}\text{C}(\text{Tt C})^{-1}$
745 ($5\text{--}95\text{ }\%$ range) from 15 models of the Coupled Model Intercomparison Project (CMIP5) for
a 2xCO₂ scenario and a range of $0.7\text{--}2.0\text{ }^{\circ}\text{C}(\text{Tt C})^{-1}$ estimated from observations. Those ranges
are somewhat lower than our 5–95 % ranges of $0.9\text{--}3.1\text{ }^{\circ}\text{C}(\text{Tt C})^{-1}$ obtained by linear regression
from the scenarios that include non-CO₂ forcing and $1.0\text{--}2.7\text{ }^{\circ}\text{C}(\text{Tt C})^{-1}$ from the 2xCO₂ simu-
lations.

750 [TCPRE^{ΔSST}](#): The transient response in sea surface temperature (SST) shows the same charac-
teristics as the response in SAT ([Fig. 3e,f](#)). The response is $1.5\text{ }^{\circ}\text{C}(\text{Tt C})^{-1}$ ($0.9\text{--}2.5\text{ }^{\circ}\text{C}(\text{Tt C})^{-1}$
68 % c.i.) evaluated at 1000 GtC total emissions, and $1.3\text{ }^{\circ}\text{C}(\text{Tt C})^{-1}$ ($0.9\text{--}1.8\text{ }^{\circ}\text{C}(\text{Tt C})^{-1}$) for the
linear regression approach.

[TCPRE^{SSLR} and TCPRE^{ΔAMOC}](#): Compared to global mean warming, the responses in steric sea
755 level rise (SSLR) and in the strength of the Atlantic meridional overturning circulation (AMOC) are
more emission-path dependent (Fig. 4, [right column b,d](#)). In all scenarios applied here, it is assumed
that atmospheric CO₂ and total radiative forcing is stabilized after 2150. This yields a slow additional
[grow-growth](#) in cumulative emissions after 2150, whereas SSLR continues largely unabated and the
AMOC continues to recover. This results in a steep slope in the relationship between cumulative
760 [carbon-CO₂](#) emissions and these variables after 2150 as well visible in Fig. 4([right column b](#)). The
path-dependency also results in larger differences between transient and peak responses (Table 2).

The projected peak SSLR is described remarkably well by a linear regression (Table 2). Yet, these results for the peak SSLR response are somewhat fortuitous and influenced by our choice to stabilize atmospheric CO₂ and forcings after 2150 in all scenarios ~~and by the stop of simulations in year 2300. We emphasize that SSLR would continue to increase beyond the end of the simulation and~~ TCPRE^{SSLR} are thus only indicative for the period from today to year 2300.

For AMOC, the ~~peak~~ response is somewhat stronger for low-emission than high-emission paths (Fig. 4ed). For 1000 GtC total emissions, we find a peak reduction in AMOC of -24 % (-35 to ~~-1615~~ %) (Fig. ~~4d~~). ~~Table 2). This sensitivity is larger than found by~~ Herrington and Zickfeld (2014), but simulated changes in AMOC are known to be model dependent.

~~TCPRE^{pH} and TCPRE^{ΔΩ_{arag,S.O.}} and TCPRE^{ΔΩ_{arag,tropics}}~~: Surface ΔpH shows a very tight and linear relationship with cumulative ~~carbon emissions~~ CO₂ emissions (Fig. 4e,f). This is consistent with a small influence of non-CO₂ forcing agents, a small response uncertainty and a relatively small dependency on the ~~carbon~~ CO₂ emission pathway as revealed by the IRF experiments. Both scenario and response uncertainty are smaller than for other variables. pH decreases by about 0.2 unit per 1000 GtC emissions from fossil sources.

For Ω_{arag}, the non-linearities are more pronounced ~~than for the physical variables and pH~~ with a proportionally stronger response at low total emissions (ΔΩ_{arag} = -0.68 to -0.54 (TtC)⁻¹ at 1000 GtC total emissions) and weaker response at higher total emissions (ΔΩ_{arag} = -0.43 to -0.35 (1000 GtC)⁻¹ at 3000 GtC total emissions, Fig. 5b and d). Again, results for fossil-fuel emissions only are provided in Fig. A3 and Table A2.

~~TCPRE^{ΔC_{soil}}~~: Finally, the change in global soil carbon (Fig. 5e,f) shows a similar response as SSLR, with continued carbon release from soils after stabilization of greenhouse gas concentrations in mid to high emission scenarios. Like the ocean heat uptake, the respiration of soil carbon can be slow, particularly in deep soil layers at high latitudes, and it takes some time to reach a new equilibrium at a higher temperature. The response uncertainty represented by the model spread for a given scenario, however, is even larger than the spread from the scenarios. For the same scenario, the ~~9590~~ % confidence interval ranges from a very high loss of up to 40 % to ~~an~~ increases in global soil carbon by a few percent (Fig. 5e). ~~Despite the very broad resulting PDFs, the most likely peak decrease in soil carbon is relatively well represented by the linear regression slope of about~~ -2.3(1000 GtC)⁻¹ (Fig. 5bf).

In summary, we find that not only global mean surface air temperature, but also the other target variables investigated here show a monotonic relationship with cumulative ~~carbon~~ CO₂ emissions in multi-gas scenarios. The relationship with cumulative ~~carbon~~ CO₂ emission is highly linear for pH as evidenced by the high correlation coefficient and the invariance in the ensemble median and confidence range from total emissions (Table 2). Changes in steric sea level, meridional overturning circulation, and aragonite saturation are generally less linearly related to cumulative emissions than

global pH and surface air temperature. These variables show a substantial non-linear response after
800 stabilization of atmospheric CO₂. Nevertheless, the PDF of the peak response for all these variables
can be reproduced relatively well with a linear regression yielding correlations of $r = 0.8\text{--}0.98$ and
standard errors of $\hat{\sigma} = 30\text{--}40\%$ (Table 2).

3.3 Transient and equilibrium climate sensitivity

TCR is estimated from the ensemble simulations with $1\% \text{ yr}^{-1}$ increase until doubling of atmo-
805 spheric CO₂ and in combination with the observational constraints (Methods). TCR is constrained
to a median value of $1.7 \text{ K}^\circ\text{C}$ with 68 and 90 % ~~confidence intervals c.i.~~ of $1.3\text{--}2.2 \text{ K}^\circ\text{C}$ and 1.1--
 $2.6 \text{ K}^\circ\text{C}$, respectively. The 68 % range is somewhat narrower than the corresponding IPCC AR5
range of $1.0\text{--}2.5 \text{ K}^\circ\text{C}$, (Collins et al., 2013). The CMIP5 model mean and 90 % uncertainty range
of 1.8 and $1.2\text{--}2.4 \text{ K}^\circ\text{C}$ (Flato et al., 2013) are fully consistent with our ~~observation-constraint~~
810 ~~observation-constrained~~ estimates.

ECS is estimated by extending the $2\times\text{CO}_2$ simulations by 1500 yr (at constant radiative forc-
ing) and fitting a sum of exponentials to the resulting temperature response. Median ECS is $2.9 \text{ K}^\circ\text{C}$
 $^\circ\text{C}$ with constrained 68 and 90 % ~~confidence interval c.i.~~ of $2.0\text{--}4.2 \text{ K}^\circ\text{C}$ and $1.5\text{--}6.0 \text{ K}^\circ\text{C}$. Again,
the CMIP5 model mean and 90 % range of 3.2 and $1.9\text{--}4.5 \text{ K}^\circ\text{C}$ are well within our observation-
815 constrained estimates. However, our 68 % confidence interval is narrower than the IPCC AR5 esti-
mate of $1.5\text{--}4.5 \text{ K}^\circ\text{C}$, particularly on the low end.

3.3.1 Influence of individual observational data on the probability distribution

26 different observational data sets are applied to constrain carbon cycle and physical climate re-
sponses. ~~An interesting question is~~ This raises the question to which extent ~~the different observations~~
820 ~~can help to reduce uncertainties. Another question is whether some of these~~ an individual data set or
a group of data sets constrain the model responses and and whether some data sets may unintention-
ally deteriorate estimates. Uncertainties in the carbon cycle are irrelevant for the physical metrics
TCR and ECS. Correspondingly, data sets aimed to constrain the carbon cycle response, e.g. land
carbon inventory data, should not affect estimates of TCR and ECS.

825 The effect of the different observational constraints on the constrained, posterior distribution for
TCR and ECS is estimated by applying only subsets of the observational data. ~~This is done in two~~
~~different ways: first, by giving~~ First, the subsets of constraints is given the full weight as if they were
the only available data (Fig. 6a and c), ~~and second, by adding subsets of constraints successively~~
~~with associated weights corresponding to the weights they will have in the fully constrained set (i.e.~~
830 ~~after adding all the subsets; Fig. 6b and d).~~ As expected, the data groups “land” and “ocean”, targeted
towards carbon cycle responses, do not influence the outcomes for TCR and ECS. The subgroups
“heat” (SAT and ocean heat uptake records) and “CO₂” both constrain TCR and ECS and shift the
prior PDF towards the fully constrained PDF when applied alone (Fig. 6a and c). The SAT record

tends to constrain TCR and ECS to slightly higher values and the ocean heat uptake data to slightly
835 lower values than the full constraint.

Interestingly, also the “CO₂” subgroup narrows the probability distribution for TCR and ECS, although less than the SAT and ocean heat records. The “CO₂” subgroup includes data sets of the atmospheric CO₂ increase over the industrial period and observation-based estimates of the ocean and land carbon uptake for recent periods. Ocean carbon and heat uptake are governed by similar
840 processes, namely the surface-to-deep transport of excess carbon and heat from the surface to the deep ocean. Apparently, model members that are not able to describe the ocean carbon uptake and the evolution in atmospheric CO₂ reasonably well, fail also to match observational records for SAT and ocean heat content. The PDF for the “CO₂” subgroup displays several maxima for ECS and similar for TCR. We are not in a position to provide a firm explanation for these maxima, but
845 speculate that this result may be related to the limited number of members in our ensemble and that the multi-dimensional model parameter space is not completely sampled.

Second, the subsets of constraints are added successively (Fig. 6b and d). Unlike above, weights associated to each subgroup are now set to correspond to the weights they will have in the fully constrained set (i.e. after adding all the subsets). Please note that the fully constrained posterior
850 distribution does not depend on the order of applying the individual constraints. When applied sequentially with their corresponding weights in the full constraint, ocean heat uptake represents the strongest constraint, ~~whereas~~. In contrast, the SAT record changes the prior PDF only slightly (dashed magenta line in Fig. 6b and d) when applied with its corresponding weight in the full constraint. Similarly, adding the group “CO₂” after the ocean heat uptake data shifts the PDF only
855 slightly (solid magenta vs. cyan line in Fig. 6b and d). This suggests that the CO₂ data does not add substantial information with respect to TCR and ECS that is not already captured by the temperature data. In summary, the subgroup “heat” represents the strongest constraints for TCR and ECS. In particular the ocean heat uptake data is important for constraining these metrics and exerts the dominant influence on the final PDFs.

860 4 Discussion

We have quantified the ~~response of Transient Climate Parameter Response to cumulative CO₂ Emissions, TCPRE^X, for~~ multiple Earth system variables ~~as a function of cumulative carbon emissions, the responses to a carbon emission pulse, and two CO₂ emission pulse defining the Impulse Response Function (IRF), and three~~ other important climate metrics, the Equilibrium
865 Climate Sensitivity (ECS) ~~and, the Transient Climate Response (TCR). Our results are based on (i) a large number of simulations carried out in a probabilistic framework for the industrial period and for the future using,~~ and the the Transient Climate Response to cumulative CO₂ Emissions (TCRE). TCPRE^X and IRF are evaluated for global and regional changes in physical

and biogeochemical parameters. The linearity and path-dependency in responses and scenario uncertainties as well as model response uncertainties are quantified. Our probabilistic results are derived with an observationally constrained ~1000-member ensemble of the Bern3D-LPJ model and for 55 different greenhouse gas scenarios and ~~(ii) a diverse and large set of observational data. The observation-constrained probability density functions provide both best estimates and uncertainties ranges for risk analyses~~ additional idealized simulations.

875 A caveat is that we apply a cost-efficient Earth System Model of Intermediate Complexity with limitations in spatial and temporal model resolution and mechanistic representation of important climate processes. ~~In contrast to~~ ~~However and in contrast to~~ ~~reduced-form~~ box-type ~~or 2-D~~ two-dimensional, linear response models, expert assumptions, or component models applied in many earlier probabilistic assessments, ~~the Bern3D-LPX~~ (e.g. Wigley and Raper, 2001; Knutti et al., 2002, 2003, 2005; Schleussner et al., 2014; Bodman et al., 2013; Little et al., 2013; Har
880 the Bern3D-LPJ features a dynamic ~~3-dimensional~~ three-dimensional ocean with physically consistent formulations for the transport of heat, carbon, and other biogeochemical tracers, similar to work by Holden et al. (2010) and Olson et al. (2012), and includes a state-of-the-art dynamic global vegetation model, peat carbon, and anthropogenic land use dynamics.

885 ~~The focus is on the~~ The model is applied directly without using an emulator (Holden et al., 2010; Olson et al., 2012; Holden et al., 2015). Further, we note that no ocean carbonate chemistry or marine biology parameters were varied in this study. Results for changes in Atlantic Meridional Overturning (AMOC) are known to vary considerably among different models and our ensemble may not represent the full uncertainty in AMOC response. Important
890 processes are not represented in Bern3D-LPJ. Most notably, the melting of ice sheets and glacier and its impacts on sea level and AMOC are not included. Consequently, only results for the steric component of sea level rise are reported and results for changes in AMOC should be considered with caution. Potential climatic "surprises" such as the massive release of methane from clathrates or permafrost are also not considered.

895 4.1 TCPRE^X: The emission-response relationship

A main focus of this study is on TCPRE^X and thus on the probabilistic relationship between cumulative ~~carbon emissions and~~ CO₂ emissions and the transient or peak response in individual, illustrative climate ~~targets~~ parameters. TCPRE^X was evaluated both by using the response and emission data for each year of a simulation and in the case of TCPRE^X_{peak} by considering only the peak (or
900 maximum) in response over a transient simulation. For simplicity, the term TCPRE^X is often used to refer to both quantities in the following discussion. In this study, probability distributions are always determined for the climate parameter response for a fixed, given amount of emissions. For example, for 1000 Gt C of total emissions, the peak response in global mean surface temperature

change (ΔSAT) is determined to $2.31\text{ }^\circ\text{C}$ and to be with a probability of 68% within 1.49 and 3.81 $^\circ\text{C}$ (Table 2).

The magnitude of the response is in general non-linearly related to cumulative CO_2 emissions. This may present no fundamental problem. Yet, non-linearity in responses add to the scenario uncertainty and extrapolation beyond the considered scenario space may not provide reliable results. Non-linear relationships cannot be precisely summarized with one single number. For convenience, we have approximated responses for the investigated variables by linear fits (Tables 2 and A2). A close to linear relationship is found for pH. Consistent with earlier studies, we also find an approximately linear relation between transient surface temperature increase and cumulative CO_2 emissions of about $1\text{--}3\text{ }^\circ\text{C}(\text{TtC})^{-1}$ over our set of multi-agent scenarios. There are some non-linear temperature responses in strong mitigation scenarios (particularly those with negative emissions).

Within Bern3D-LPJ, $\text{TCPRE}^{\Delta\text{SAT}}$ is higher when evaluated at 1000 GtC than when evaluated at 2000 or 3000 GtC (see Table 2). This may be related to non- CO_2 forcing as it has potentially a relatively smaller role in high-emission scenarios. It may also be model specific as similar tendencies are found not only for the other physical parameters, but also the ocean acidification parameters which are hardly influenced by non- CO_2 forcing. A tendency for the TCRE to decrease with increasing cumulative emissions is noted in earlier studies (Herrington and Zickfeld, 2014; Gillett et al., 2013; Matthews et al., 2009), while Krasting et al. (2014) find TCRE to be large for low and high emission rates and low for modern emission rates in idealized scenarios in the GFDL model.

4.2 Climate targets, allowable emissions and TCPRE^X

Next we address climate targets and allowable emissions, widely discussed in the literature for global mean surface temperature (e.g. Siegenthaler and Oeschger, 1978; Friedlingstein et al., 2011; Rogelj et al., 2011; Peters et al., 2013). The link between a climate target, e.g., the $2\text{ }^\circ\text{C}$ target, and allowable emissions is closely related to TCPRE^X and $\text{TCPRE}_{\text{peak}}^X$. The probabilistic, quantitative relationship between a climate variable of choice and cumulative carbon- CO_2 emissions permits one to easily assess the ceiling in cumulative carbon- CO_2 emissions if a specific individual limit is not to be exceeded with a given probability. Two examples, cumulative fossil carbon emissions since preindustrial must not exceed 640–1030, P . This quantification of allowable emissions is possible irrespective of whether the emission-parameter response relationship is linear or not. Estimates of allowable emissions may be inferred from the full model ensemble results or approximated graphically from the Figs. 3 to

5. Even simpler, $\text{TCPRE}^X(P)$ (or $\text{TCPRE}_{\text{peak}}^X(P)$) is a convenient measure to link a given climate target with allowable fossil fuel CO_2 emissions, $E_{\text{allowable}}$. It holds:

$$E_{\text{allowable}} = \frac{X_{\text{target}}(P)}{\text{TCPRE}^X(P)} \text{ trillion-ton-carbon,} \quad (11)$$

940 where $X_{\text{target}}(P)$ is a limit in parameter X not to be exceeded with probability P . $\text{TCPRE}^X(P)$ is then the numerical value determined from the probability distribution (e.g. Fig. 3d) of TCPRE^X for a given cumulative probability P (or $(1 - P)$). In case of an approximately linear emission-response relationship, a single value of $\text{TCPRE}^X(P)$ applies for different target levels. For example, $\text{TCPRE}_{\text{peak}}^{\Delta\text{SAT}}$ is 2.85°C per trillion ton-C and at the 68 % percentile (evaluated for total emissions of 1000 Gt C (~~this range indicates the uncertainty from the concurrent non- CO_2 forcing~~ to meet the ~~Caneun~~)). Then, allowable total carbon emissions to keep global mean surface temperature warming below 2°C target with an at any time with a 68 % probability ~~by 2100 AD~~ is estimated to 702 Gt C ($2/2.85 \cdot$ trillion ton-C).

950 Numerical values of TCPRE^X vary with the magnitude of emissions (Tables 2 and A2) as mentioned above. Cumulative fossil ~~carbon emissions must not exceed 880~~ and land use emissions up to year 2100 are typically lower than 1500 Gt C ~~if annual-mean, area-averaged Southern Ocean conditions were not to become undersaturated with respect to aragonite with an~~ for the mitigation scenarios of the Energy Modeling Forum Project 21 (Van Vuuren et al., 2008). Thus, in the context of emission mitigation, the numerical values (median and confidence interval) determined at 1000 Gt C cumulative fossil fuel emissions appear best suited (Tables 2 and A2). For convenience, 955 we provide the inverse values of TCPRE^X and $\text{TCPRE}_{\text{peak}}^X$ for the different climate parameters for the 68 % ~~probability (Steinacher et al., 2013)~~ and 90 % percentiles of the cumulative, integrated probability distribution in table 3. Multiplying the appropriate value with the climate target of choice yields the allowable emissions to meet this target with 68 % and 90 % probability, respectively.

Some aspects are not explicitly considered here. First, meeting a set of multiple targets requires 960 lower cumulative ~~carbon- CO_2~~ emissions than required to meet the most stringent target within the set in probabilistic assessments (Steinacher et al., 2013). Thus, the evaluation of allowable cumulative emissions to meet multiple climate targets requires their joint evaluation. In practical terms, the joint evaluation of the 2°C target and the Southern Ocean saturation target would yield lower allowable emissions than indicated in the above paragraph.

965 Second, inertia in the socio-economic system limits the rate of carbon emission reduction. In other words, carbon emissions are committed for the future through existing infrastructure. ~~Consequently, eliminate target~~ The committed peak change in a climate parameter X (relative to preindustrial) under a limited, constant rate of emission reduction s is easily evaluated using the tabulated values of

TCPRE^X (Allen and Stocker, 2014) :

$$X_{\text{peak}} = \text{TCPRE}^X \left(\frac{e(t)}{s} + E(t) \right) \quad (12)$$

Here, $e(t)$ denotes the CO₂ emissions at time t , e.g., today, $e(t)/s$ is the cumulative sum of future emissions (given exponentially decreasing emissions with rate s), and $E(t)$ the cumulative emissions over the historical period up to time t . Economically feasible emission reduction rates are considered to be in the range of a few percent. In 2015, total CO₂ emissions are about 10 GtC per year and realized emissions from fossil fuel burning, land use, and cement production are about 600 GtC. This yields a committed (median) change in SAT of 2.5 (2.31 °C per trillion ton-C × (10/0.02+600) GtC) and 1.8 °C when assuming immediate emission reduction with a rate of 2% and 5%, respectively. The corresponding commitments in pH decrease are 0.22 and 0.16.

Climate targets may become out of reach when the transition to a decarbonized economy is delayed (Stocker, 2013).

The magnitude of the response is in general non-linearly related to cumulative carbon emissions. This may present no fundamental problem. Yet, non-linearity in responses add to the scenario uncertainty and extrapolation beyond the considered scenario space may not provide reliable results. Non-linear relationships cannot be precisely summarized with one single number. For convenience, we have approximated responses for the investigated variables by linear fits (This is quantitatively illustrated by the Mitigation Delay Sensitivity (MDS; Stocker, 2013; Pfister and Stocker, submitted), a metric that captures the additional, committed increase in a climate parameter due to a delay in emission reduction. Again, the values of TCPRE^X given in Tables 2 and A2). A close to linear relationship is found for pH. Consistent with earlier studies, we also find an approximately linear relation between transient surface temperature increase and cumulative carbon emissions of about 1–3 °C (TtC)⁻¹ over our set of multi-agent scenarios. There are some non-linear temperature responses in strong mitigation scenarios (particularly those with negative emissions) allow one to compute the median and the 68% confidence interval for the MDS following Allen and Stocker (2014).

4.3 Impulse Response Functions

The response to a pulse-like input of carbon into the atmosphere for atmospheric CO₂, ocean and land carbon, surface air temperature, and steric sea level rise are discussed elsewhere (e.g. Archer et al., 1998; Frölicher et al., 2014; Joos et al., 2013; Shine et al., 2005) (e.g. Archer et al., 1998; Frölicher et al., 2014; Here we provide in addition impulse response functions for surface ocean pH and calcium carbonate saturation states, and soil carbon. A substantial fraction of carbon emitted today will remain airborne for centuries and millennia. The impact of today's carbon emissions on surface air temperature will accrue within about 20 years only, but persists for many centuries. In the Bern3D-LPJ as in many other models, surface air temperature remains approximately constant after the first

1005 ~20 years after the pulse input. As found in earlier studies, the normalized IRF in SAT depends
relatively weakly on the magnitude of the emission pulse. However, the peak warming is realized
later for larger than for smaller emission pulses in the Bern3D and in a range of other models
(Joos et al., 2013; Zickfeld and Herrington, 2015). Interestingly, Frölicher et al. (2014) find that
surface air temperature increases for several centuries in their CO₂ pulse experiment with the GFDL
model. Steric sea level rise accrues slowly on multi-decadal to century time scales. Similar as for
1010 atmospheric CO₂, peak impacts in surface ocean pH and saturation states occur almost immediately
after emissions and these changes will persist for centuries and millennia. Thus, the environment
and the socio-economic system will experience the impact of our current carbon emissions more or
less immediately and these impacts are irreversible on human time scales.

4.4 Transient and Equilibrium Climate Sensitivity

1015 Another focus of this study is to provide observation-constrained estimates of the
Transient Climate Response (TCR), the Equilibrium Climate Sensitivity (ECS), and the
Transient Climate Response to cumulative CO₂ Emissions (TCRE) as determined from
CO₂-only scenarios. The recent slow-down in global surface air-temperature warming
(Hartmann et al., 2013; Roberts et al., 2015; Nieves et al., 2015; Karl et al., 2015; Marotzke and Forster, 2015),
1020 termed hiatus, has provoked discussions whether climate models react too sensitive to radiative
forcing. Here, the observation-constrained TCR and ECS are quantified to 1.7 and 2.9 °C
(ensemble mean) with 68 % uncertainty ranges of 1.3 to 2.2 and 2.0 to 4.2 °C, respectively.
TCRE is estimated to 1.7 °C (TtC)⁻¹. Our results for ECS and TCR, TCR, and TCRE are
consistent with the CMIP5 estimates in terms of multi-model mean and uncertainty ranges
1025 (Flato et al., 2013) and there is no apparent discrepancies between our observation-constrained
TCR and CMIP5 models. On the other hand, our results do not confirm some recent studies
(Otto et al., 2013; Schwartz, 2012; Collins et al., 2013) that suggest the possibility of a TCR below
1 °C. Such low values for TCR are outside the very likely range given in the Fourth Assessment
Report of IPCC (discussed by Collins et al., 2013) and of this study.

1030 The choice and record length of observational constraints may bias results for TCR
and ECS. In particular, internal climate variability, e.g., associated with the Atlantic
Multi-decadal Oscillation, may obscure the link between anthropogenic forcing and response
(van der Werf and Dolman, 2014). Ocean heat content data provide the strongest constraint on ECS
and TCR in our analysis. The influence of the applied long-term hemispheric surface air temperature
1035 (SAT) records is smaller. This is not surprising as ocean heat content represents the time-integrated
anthropogenic forcing signal both in the observations and in our model. Roemmich et al. (2015)
analyzed a large set of ocean temperature measurements from floats covering the top 2000 m of the
water column and concluded that ocean heat uptake continues steadily and unabated over the recent
period 2006 and 2013. The significant variability in surface temperature and upper 100 m heat con-

1040 tent was offset by opposing variability from 100–500 m. The high variability of the SAT and SST
records as evidenced by the hiatus serves to emphasize that ~~they~~ these records are poor indicator of
the steadier subsurface-ocean and climate warming signal on the decadal timescale. These findings
appear to support our approach where ocean heat data provide the strongest constraint on TCR and
ECS, complemented by hemispheric century-scale (1850 to 2010) SAT records. Studies that rely on
1045 decadal-scale SAT (or SST) changes as included in the most recent assessment by the Intergovern-
mental Panel on Climate Change (IPCC) may be affected by large and unavoidable uncertainties due
to the chaotic nature of natural, internal variability (van der Werf and Dolman, 2014). These find-
ings suggest that the downward revision of the ECS range from the IPCC Assessment Report Four
to Report Five may, in hindsight, appear perhaps somewhat cautious and that the AR4 range may be
1050 more reliable.

5 Summary and conclusions

We have quantified the Transient Climate Parameter Response to cumulative CO₂ Emissions, TCPRE^X, for multiple Earth system variables, the responses to a CO₂ emission pulse defining the Impulse Response Function (IRF), and three other important climate metrics, the Equilibrium
1055 Climate Sensitivity (ECS), the Transient Climate Response (TCR), and the Transient Climate Response to cumulative CO₂ Emissions (TCRE). Our results are based on (i) a large number of simulations carried out in a probabilistic framework for the industrial period and for the future using 55 different greenhouse gas scenarios, different emission pulses, and a ~1000-member model ensemble and (ii) a diverse and large set of observational data as constraints. The
1060 observation-constrained probability density functions provide both best estimates and uncertainties ranges for risk analyses and for determining allowable emissions to meet a climate target.

The 68% confidence intervals for TCR and ECS are constrained to 1.3 to 2.2 °C and 2.0 to 4.2 °C, respectively. This is fully consistent with the range found by the CMIMP5 models, but in conflict with suggestions of the possibility of a TCR below 1 °C. Ocean heat content data provide the most
1065 stringent constraint on these estimates, while observation-based records of surface air temperature and of the atmospheric CO₂ budget are of secondary importance in our analysis.

TCPRE^X and IRF are evaluated for changes in physical variables including surface air and ocean temperature, sea level, and Atlantic Meridional Overturning Circulation and changes in ocean acidification parameters and terrestrial soil carbon stocks. Path-dependency in responses and
1070 scenario uncertainties as well as model response uncertainties are quantified.

The IRF analysis provides a theoretical framework to discuss path-dependency and linearity in response without the need to run many independent scenarios. It reveals that a perfect linearity between cumulative CO₂ emissions and Earth system variables is not to be expected. Nevertheless, the median values of the (normalized) IRFs vary within a limited range for an emission age range

1075 between 30 and 500 years and for pulse sizes between 100 and 3000 Gt C for global mean surface
air temperature, surface ocean pH, Atlantic Meridional Overturning (AMOC), and to a somewhat
lesser degree for steric sea level rise (SSLR). This implies a a close-to-linear relationship between
these variables and cumulative CO₂ emissions and relatively little influence of the CO₂-emission
scenario-choice for these variables. On the other hand, the IRFs for atmospheric CO₂, global soil
1080 carbon inventory and aragonite saturation in the tropics and Southern Ocean show to vary with the
size of the emission pulse, implying some non-linearity in the emission-response relationship.

TCPRE^X provides a convenient metric to characterize (i) responses of different climate
parameters to CO₂ emissions and (ii) to estimate the link between an individual climate target and
allowable emissions. A close to linear relationship between cumulative CO₂ emissions and modeled
1085 change is found for the Earth System parameters investigated here and when considering both
scenario and response uncertainty and total emissions of up to 3000 Gt C. These findings suggests
that the emission-response and emission-climate target relationships described by TCPRE^X should
be further evaluated and quantified for additional impact-relevant climate parameters and using the
full Earth System Model hierarchy.

1090 **Appendix A: Total versus fossil-fuel only CO₂ emissions**

Many studies report TCRE with respect to “cumulative total anthropogenic CO₂ emissions”
(e.g. IPCC, 2013; Allen et al., 2009; Meinshausen et al., 2009), not distinguishing between
fossil-fuel emissions and emissions from land-use changes. Here, we use a model that explicitly
simulates terrestrial carbon fluxes, including those from land-use changes. Thus the diagnosed
1095 CO₂ emissions obtained by closing the global carbon budget to match the prescribed atmospheric
concentration in the scenarios correspond to fossil-fuel emissions only. In order to estimate total
emissions in our simulations, direct land-use emissions (i.e. carbon from vegetation that is removed
due to land-use changes) are instantaneously added to the diagnosed fossil-fuel emissions. The
delayed emission of carbon from deforestation via product and litter pools as well as indirect
1100 land-use change effects such as the losses of terrestrial sink capacity (Strassmann et al., 2008) or
from the abandonment of land-use areas are simulated by the model, but they are not included in
the estimate of total carbon emissions because this would require additional simulations. Shifting
cultivation (Stocker et al., 2014) has not been considered in this study. Results in the present
study are mostly given as a function of total (fossil-fuel plus deforestation) and, where indicated,
1105 additionally as a function of fossil-fuel emissions. Results for fossil-fuel emissions only are
provided in the appendix (Fig. A3 and Table A2).

Acknowledgements. This study was funded by the Swiss National Science Foundation and the European Project CARBOCHANGE (264879) which received funding from the European Commission's Seventh Framework Programme (FP7/20072013).

1110 **References**

- Allen, M. R., D. J. Frame, C. Huntingford, C. D. Jones, J. A. Lowe, M. Meinshausen, and N. Meinshausen, 2009: Warming caused by cumulative carbon emissions towards the trillionth tonne. *Nature*, **458 (7242)**, 1163–1166, doi:10.1038/nature08019.
- Allen, M. R. and T. F. Stocker, 2014: Impact of delay in reducing carbon dioxide emissions. *Nat. Clim. Ch.*, **4 (1)**, 23–26, doi:10.1038/nclimate2077, <http://dx.doi.org/10.1038/nclimate2077>.
- 1115 Antonov, J. I., et al., 2010: World ocean atlas 2009, volume 2: Salinity. NOAA Atlas NESDIS 69, U.S. Government Printing Office, 184 pp pp., Washington, D.C.
- Archer, D., H. Kheshgi, and E. Maier-Reimer, 1998: Dynamics of fossil fuel CO₂ neutralization by marine CaCO₃. *Global Biogeochem. Cy.*, **12 (2)**, 259–276, doi:10.1029/98GB00744.
- 1120 Bartelink, H. H., 1998: A model of dry matter partitioning in trees. *Tree Physiol.*, **18 (2)**, 91–101.
- Batjes, N. H., 1996: Total carbon and nitrogen in the soils of the world. *Eur. J. Soil Sci.*, **47 (2)**, 151–163, doi:10.1111/j.1365-2389.1996.tb01386.x.
- Bhat, K. S., M. Haran, R. Olson, and K. Keller, 2012: Inferring likelihoods and climate system characteristics from climate models and multiple tracers. *Environmetrics*, **23 (4)**, 345–362, doi:10.1002/env.2149.
- 1125 Bodman, R. W., P. J. Rayner, and D. J. Karoly, 2013: Uncertainty in temperature projections reduced using carbon cycle and climate observations. *Nat. Clim. Ch.*, **3 (8)**, 725–729, doi:10.1038/NCLIMATE1903.
- Bozbiyik, A., M. Steinacher, F. Joos, T. F. Stocker, and L. Menviel, 2011: Fingerprints of changes in the terrestrial carbon cycle in response to large reorganizations in ocean circulation. *Clim. Past*, **7 (1)**, 319–338, doi:10.5194/cp-7-319-2011.
- 1130 Brohan, P., J. J. Kennedy, I. Harris, S. F. B. Tett, and P. D. Jones, 2006: Uncertainty estimates in regional and global observed temperature changes: A new data set from 1850. *J. Geophys. Res.-Atmos.*, **111 (D12)**, doi:10.1029/2005JD006548.
- Calvin, K., et al., 2012: The role of asia in mitigating climate change: Results from the asia modeling exercise. *Energ. Econ.*, **34, Supplement 3**, S251–S260, doi:10.1016/j.eneco.2012.09.003.
- 1135 Canadell, J. G., et al., 2007: Contributions to accelerating atmospheric CO₂ growth from economic activity, carbon intensity, and efficiency of natural sinks. *Proc. Nat. Acad. Sci. USA*, **104 (47)**, 18 866–18 870, doi:10.1073/pnas.0702737104.
- Charman, D. J., et al., 2013: Climate-related changes in peatland carbon accumulation during the last millennium. *Biogeosciences*, **10 (2)**, 929–944, doi:10.5194/bg-10-929-2013.
- 1140 Collaty, G. J., J. A. Berry, G. D. Farquhar, and J. Pierce, 1990: The relationship between the rubisco reaction-mechanism and models of photosynthesis. *Phys. Chem. Earth*, **13 (3)**, 219–225, doi:10.1111/j.1365-3040.1990.tb01306.x.
- Collins, M., et al., 2013: *Climate Change 2013: The Physical Science Basis. Contribution of Working Group I to the Fifth Assessment Report of the Intergovernmental Panel on Climate Change*, chap. 12: Long-term Climate Change: Projections, Commitments and Irreversibility, 1029–1136. Cambridge University Press, Cambridge, United Kingdom and New York, NY, USA.
- 1145 Conway, T. and P. Tans, 2011: Trends in atmospheric carbon dioxide. Data set, NOAA/ESRL. Available on-line: <http://www.esrl.noaa.gov/gmd/ccgg/trends/>.

- Deutsch, C., A. Ferrel, B. Seibel, H.-O. Poertner, and R. B. Huey, 2015: Climate change tightens a metabolic
1150 constraint on marine habitats. *Science*, **348** (6239), 1132–1135, doi:10.1126/science.aaa1605.
- Dickson, A., 2002: *Handbook of methods of the analysis of the various parameters of the carbon dioxide system in seawater*. US Dep. of Energy, Washington, D. C.
- Edwards, N. and R. Marsh, 2005: Uncertainties due to transport-parameter sensitivity in an efficient 3-D ocean-climate model. *Clim. Dynam.*, **24** (4), 415–433, doi:10.1007/s00382-004-0508-8.
- 1155 Etheridge, D. M., L. P. Steele, R. L. Langenfelds, R. J. Francey, J. M. Barnola, and V. I. Morgan, 1996: Natural and anthropogenic changes in atmospheric CO₂ over the last 1000 years from air in antarctic ice and firn. *J. Geophys. Res.-Atmos.*, **101** (D2), 4115–4128, doi:10.1029/95JD03410.
- Farquhar, G. D., S. V. Caemmerer, and J. A. Berry, 1980: A biochemical-model of photosynthetic CO₂ assimilation in leaves of C-3 species. *Planta*, **149** (1), 78–90.
- 1160 Flato, G., et al., 2013: *Climate Change 2013: The Physical Science Basis. Contribution of Working Group I to the Fifth Assessment Report of the Intergovernmental Panel on Climate Change*, chap. 9: Evaluation of Climate Models, 741–866. Cambridge University Press, Cambridge, United Kingdom and New York, NY, USA.
- Forster, P., et al., 2007: *Climate Change 2007: The Physical Science Basis. Contribution of Working Group I to the Fourth Assessment Report of the Intergovernmental Panel on Climate Change*, chap. 2: Changes
1165 in Atmospheric Constituents and in Radiative Forcing, 129–234. Cambridge University Press, Cambridge, United Kingdom and New York, NY, USA.
- Friedlingstein, P., S. Solomon, G.-K. Plattner, R. Knutti, P. Ciais, and M. R. Raupach, 2011: Long-term climate implications of twenty-first century options for carbon dioxide emission mitigation. *Nat. Clim. Ch.*, **1** (9),
1170 457–461, doi:10.1038/NCLIMATE1302.
- Frölicher, T. L. and D. J. Paynter, 2015: Extending the relationship between global warming and cumulative carbon emissions to multi-millennial timescales. *Environ. Res. Lett.*, **10** (075002).
- Frölicher, T. L., M. Winton, and J. L. Sarmiento, 2014: Continued global warming after CO₂ emissions stoppage. *Nat. Clim. Ch.*, **4** (1), 40–44, doi:10.1038/nclimate2060, <http://dx.doi.org/10.1038/nclimate2060>.
- 1175 Gangstø, R., M. Gehlen, B. Schneider, L. Bopp, O. Aumont, and F. Joos, 2008: Modeling the marine aragonite cycle: changes under rising carbon dioxide and its role in shallow water CaCO₃ dissolution. *Biogeosciences*, **5** (4), 1057–1072.
- Garcia, H. E., R. A. Locarnini, T. P. Boyer, J. I. Antonov, M. M. Zweng, O. K. Baranova, and J. D. R., 2010: World ocean atlas 2009, volume 4: Nutrients (phosphate, nitrate, silicate). NOAA Atlas NESDIS 71, U.S.
1180 Government Printing Office, 398 pp pp., Washington, D.C.
- Gattuso, J.-P., et al., 2015: Contrasting futures for ocean and society from different anthropogenic CO₂ emissions scenarios. *Science*, **349** (6243), 45+, doi:10.1126/science.aac4722.
- Gerber, M. and F. Joos, 2010: Carbon sources and sinks from an Ensemble Kalman Filter ocean data assimilation. *Global Biogeochem. Cy.*, **24**, doi:10.1029/2009GB003531.
- 1185 Gerber, M. and F. Joos, 2013: An Ensemble Kalman Filter multi-tracer assimilation: Determining uncertain ocean model parameters for improved climate-carbon cycle projections. *Ocean Model.*, **64**, 29–45, doi:10.1016/j.ocemod.2012.12.012.

- Gerber, M., F. Joos, M. Vazquez-Rodriguez, F. Touratier, and C. Goyet, 2009: Regional air-sea fluxes of anthropogenic carbon inferred with an Ensemble Kalman Filter. *Global Biogeochem. Cy.*, **23**, doi:10.1029/2008GB003247.
- 1190
- Gillett, N. P., V. K. Arora, D. Matthews, and M. R. Allen, 2013: Constraining the ratio of global warming to cumulative CO₂ emissions using CMIP5 simulations. *J. Climate*, **26** (18), 6844–6858, doi:10.1175/JCLI-D-12-00476.1.
- Global Soil Data Task Group, 2000: Global gridded surfaces of selected soil characteristics (IGBP-DIS). Data set doi:10.3334/ORNLDAAC/569, Oak Ridge National Laboratory Distributed Active Archive Center, Oak Ridge, Tennessee, U.S.A. <http://www.daac.ornl.gov>.
- 1195
- GLOBALVIEW-CO₂, 2011: Cooperative atmospheric data integration project - carbon dioxide. Cd-rom, NOAA ESRL, Boulder, Colorado. Also available on Internet via anonymous FTP to <ftp.cmdl.noaa.gov>, Path: [ccg/co2/GLOBALVIEW](ftp://ftp.cmdl.noaa.gov/ccg/co2/GLOBALVIEW).
- 1200
- Gobron, N., et al., 2006: Evaluation of fraction of absorbed photosynthetically active radiation products for different canopy radiation transfer regimes: Methodology and results using Joint Research Center products derived from SeaWiFS against ground-based estimations. *J. Geophys. Res.-Atmos.*, **111** (D13110), doi:10.1029/2005JD006511.
- Gregory, J. M., C. D. Jones, P. Cadule, and P. Friedlingstein, 2009: Quantifying carbon cycle feedbacks. *J. Climate*, **22** (19), 5232–5250, doi:10.1175/2009JCLI2949.1.
- 1205
- Gruber, N., C. Hauri, Z. Lachkar, D. Loher, T. L. Froelicher, and G.-K. Plattner, 2012: Rapid progression of ocean acidification in the California current system. *Science*, **337** (6091), 220–223, doi:10.1126/science.1216773.
- Grübler, A., et al., 2007: Integrated assessment of uncertainties in greenhouse gas emissions and their mitigation: Introduction and overview. *Technol. Forecast. Soc.*, **74** (7), 873–886, doi:10.1016/j.techfore.2006.07.009.
- 1210
- Hallgren, W. S. and A. J. Pitman, 2000: The uncertainty in simulations by a global biome model (BIOMES) to alternative parameter values. *Glob. Change Biol.*, **6** (5), 483–495, doi:10.1046/j.1365-2486.2000.00325.x.
- Harris, G. R., D. M. H. Sexton, B. B. Booth, M. Collins, and J. M. Murphy, 2013: Probabilistic projections of transient climate change. *Clim. Dynam.*, **40** (11-12), 2937–2972, doi:10.1007/s00382-012-1647-y.
- 1215
- Hartmann, D. L., et al., 2013: *Climate Change 2013: The Physical Science Basis. Contribution of Working Group I to the Fifth Assessment Report of the Intergovernmental Panel on Climate Change*, chap. 2: Observations: Atmosphere and Surface, 159–254. Cambridge University Press, Cambridge, United Kingdom and New York, NY, USA.
- 1220
- Hawkins, E. and R. Sutton, 2009: The potential to narrow uncertainty in regional climate predictions. *Bull. Amer. Meteorol. Soc.*, **90** (8), 1095+, doi:10.1175/2009BAMS2607.1.
- Haxeltine, A. and I. C. Prentice, 1996: A general model for the light-use efficiency of primary production. *Funct. Ecol.*, **10** (5), 551–561, doi:10.2307/2390165.
- Heinze, C., 2004: Simulating oceanic CaCO₃ export production in the greenhouse. *Geophys. Res. Lett.*, **31** (L16308), doi:10.1029/2004GL020613.
- 1225
- Herrington, T. and K. Zickfeld, 2014: Path independence of climate and carbon cycle response over a broad range of cumulative carbon emissions. *Earth Syst. Dyn.*, **5** (2), 409–422, doi:10.5194/esd-5-409-2014.

- Holden, P. B., N. R. Edwards, P. H. Garthwaite, and R. D. Wilkinson, 2015: Emulation and interpretation of high-dimensional climate model outputs. *J. Appl. Sat.*, **42** (9), 2038–2055, doi:10.1080/02664763.2015.1016412.
- 1230
- Holden, P. B., N. R. Edwards, D. Gerten, and S. Schaphoff, 2013: A model-based constraint on CO₂ fertilisation. *Biogeosciences*, **10** (1), 339–355, doi:10.5194/bg-10-339-2013.
- Holden, P. B., N. R. Edwards, K. I. C. Oliver, T. M. Lenton, and R. D. Wilkinson, 2010: A probabilistic calibration of climate sensitivity and terrestrial carbon change in GENIE-1. *Clim. Dynam.*, **35** (5), 785–806, doi:10.1007/s00382-009-0630-8.
- 1235
- Howes, E. L., F. Joos, M. Eakin, and J.-P. Gattuso, 2015: An updated synthesis of the observed and projected impacts of climate change on the chemical, physical and biological processes in the oceans. *Front. Mar. Sci.*, **2** (36), doi:10.3389/fmars.2015.00036, http://www.frontiersin.org/global_change_and_the_future_ocean/10.3389/fmars.2015.00036/abstract.
- 1240
- Huang, B. Y., P. H. Stone, A. P. Sokolov, and I. V. Kamenkovich, 2003: Ocean heat uptake in transient climate change: Mechanisms and uncertainty due to subgrid-scale eddy mixing. *J. Climate*, **16** (20), 3344–3356, doi:10.1175/1520-0442(2003)016<3344:OHUITC>2.0.CO;2.
- Huber, M. and R. Knutti, 2014: Natural variability, radiative forcing and climate response in the recent hiatus reconciled. *Nature Geosci.*, **7** (9), 651–656, doi:10.1038/NGEO2228.
- 1245
- IPCC, 1995: *Climate Change 1995: The Science of Climate Change, Technical Summary*. Press Syndicate of the University of Cambridge, Cambridge, United Kingdom and New York, NY, USA., 11–34 pp.
- IPCC, 2013: *Summary for Policymakers. In: Climate Change 2013: The Physical Science Basis. Contribution of Working Group I to the Fifth Assessment Report of the Intergovernmental Panel on Climate Change*. Cambridge University Press, Cambridge, United Kingdom and New York, NY, USA., 3–32 pp.
- 1250
- IPCC, 2014: *Climate Change 2014: Impacts, Adaptation, and Vulnerability. Contribution of Working Group I to the Fifth Assessment Report of the Intergovernmental Panel on Climate Change*. Cambridge University Press, Cambridge, United Kingdom and New York, NY, USA., 1132pp pp.
- Jenkinson, D. S., 1990: The turnover of organic-carbon and nitrogen in soil. *Philos. T. Roy. Soc. B*, **329** (1255), 361–368, doi:10.1098/rstb.1990.0177.
- 1255
- Joos, F., M. Bruno, R. Fink, U. Siegenthaler, T. F. Stocker, and C. Le Quéré, 1996: An efficient and accurate representation of complex oceanic and biospheric models of anthropogenic carbon uptake. *Tellus B*, **48** (3), 397–417, doi:10.1034/j.1600-0889.1996.t01-2-00006.x.
- Joos, F., T. L. Frölicher, M. Steinacher, and G.-K. Plattner, 2011: *Ocean Acidification*, chap. 14: Impact of climate change mitigation on ocean acidification projections, 319–338. Oxford University Press, New York, USA.
- 1260
- Joos, F., G.-K. Plattner, T. F. Stocker, O. Marchal, and A. Schmittner, 1999: Global warming and marine carbon cycle feedbacks and future atmospheric CO₂. *Science*, **284** (5413), 464–467.
- Joos, F., I. C. Prentice, S. Sitch, R. Meyer, G. Hooss, G.-K. Plattner, S. Gerber, and K. Hasselmann, 2001: Global warming feedbacks on terrestrial carbon uptake under the Intergovernmental Panel on Climate Change (IPCC) emission scenarios. *Global Biogeochem. Cy.*, **15** (4), 891–907.
- 1265

- Joos, F., et al., 2013: Carbon dioxide and climate impulse response functions for the computation of greenhouse gas metrics: a multi-model analysis. *Atmos. Chem. Phys.*, **13**, 2793–2825, doi:10.5194/acp-13-2793-2013, <http://www.atmos-chem-phys.net/13/2793/2013>.
- 1270 Karl, T. R., et al., 2015: Possible artifacts of data biases in the recent global surface warming hiatus. *Science*, **348 (6242)**, 1469–1472, doi:10.1126/science.aaa5632.
- Keeling, C. D. and T. P. Whorf, 2005: *Atmospheric CO₂ records from sites in the SIO air sampling network*. Trends Online: A compendium of Data on Global Change, Carbon Dioxide Information Analysis Center, Oak Ridge National Laboratory, US Department of Energy, Oak Ridge, Tenn., U.S.A.
- 1275 Keith, H., B. G. Mackey, and D. B. Lindenmayer, 2009: Re-evaluation of forest biomass carbon stocks and lessons from the world's most carbon-dense forests. *Proc. Nat. Acad. Sci. USA*, **106 (28)**, 11 635–11 640, doi:10.1073/pnas.0901970106.
- Kergoat, L., 1998: A model for hydrological equilibrium of leaf area index on a global scale. *J. Hydrol.*, **212 (1-4)**, 268–286, doi:10.1016/S0022-1694(98)00211-X.
- 1280 Key, R. M., et al., 2004: A global ocean carbon climatology: Results from Global Data Analysis Project (GLODAP). *Global Biogeochem. Cy.*, **18 (GB4031+)**, doi:10.1029/2004GB002247.
- Knutti, R. and G. C. Hegerl, 2008: The equilibrium sensitivity of the Earth's temperature to radiation changes. *Nature Geosci.*, **1 (11)**, 735–743, doi:10.1038/ngeo337.
- Knutti, R., F. Joos, S. A. Muller, G. K. Plattner, and T. F. Stocker, 2005: Probabilistic climate change projections for CO₂ stabilization profiles. *Geophys. Res. Lett.*, **32 (20)**, doi:10.1029/2005GL023294.
- 1285 Knutti, R., T. F. Stocker, F. Joos, and G. K. Plattner, 2002: Constraints on radiative forcing and future climate change from observations and climate model ensembles. *Nature*, **416 (6882)**, 719–723, doi:10.1038/416719a.
- Knutti, R., T. F. Stocker, F. Joos, and G. K. Plattner, 2003: Probabilistic climate change projections using neural networks. *Clim. Dynam.*, **21 (3-4)**, 257–272, doi:10.1007/s00382-003-0345-1.
- 1290 Krasting, J. P., J. P. Dunne, E. Shevliakova, and R. J. Stouffer, 2014: Trajectory sensitivity of the transient climate response to cumulative carbon emissions. *Geophys. Res. Lett.*, **41 (7)**, 2520–2527, doi:10.1002/2013GL059141.
- Kummer, J. R. and A. E. Dessler, 2014: The impact of forcing efficacy on the equilibrium climate sensitivity. *Geophys. Res. Lett.*, **41 (10)**, 3565–3568, doi:10.1002/2014GL060046.
- 1295 Kwon, E. Y., F. Primeau, and J. L. Sarmiento, 2009: The impact of remineralization depth on the air-sea carbon balance. *Nature Geosci.*, **2 (9)**, 630–635, doi:10.1038/NGEO612.
- Leverenz, J. W., 1988: The effects of illumination sequence, CO₂ concentration, temperature and acclimation on the convexity of the photosynthetic light response curve. *Physiol. Plantarum*, **74 (2)**, 332–341, doi:10.1111/j.1399-3054.1988.tb00639.x.
- 1300 Levitus, S., et al., 2012: World ocean heat content and thermosteric sea level change (0-2000 m), 1955-2010. *Geophys. Res. Lett.*, **39**, doi:10.1029/2012GL051106.
- Little, C. M., M. Oppenheimer, and N. M. Urban, 2013: Upper bounds on twenty-first-century antarctic ice loss assessed using a probabilistic framework. *Nat. Clim. Ch.*, **3 (7)**, 654–659, doi:10.1038/NCLIMATE1845.
- Lloyd, J. and J. A. Taylor, 1994: On the temperature-dependence of soil respiration. *Funct. Ecol.*, **8 (3)**, 315–323, doi:10.2307/2389824.

- 1305 Locarnini, R. A., A. V. Mishonov, J. I. Antonov, T. P. Boyer, H. E. Garcia, M. M. Baranova, O. K. Zweng, and D. R. Johnson, 2010: World ocean atlas 2009, volume 1: Temperature. NOAA Atlas NESDIS 68, U.S. Government Printing Office, 184 pp pp., Washington, D.C.
- Luyssaert, S., et al., 2007: CO₂ balance of boreal, temperate, and tropical forests derived from a global database. *Glob. Change Biol.*, **13** (12), 2509–2537, doi:10.1111/j.1365-2486.2007.01439.x.
- 1310 Lyman, J. M., S. A. Good, V. V. Gouretski, M. Ishii, G. C. Johnson, M. D. Palmer, D. M. Smith, and J. K. Willis, 2010: Robust warming of the global upper ocean. *Nature*, **465** (7296), 334–337, doi:10.1038/nature09043.
- Magnani, F., S. Leonardi, R. Tognetti, J. Grace, and M. Borghetti, 1998: Modelling the surface conductance of a broad-leaf canopy: effects of partial decoupling from the atmosphere. *Phys. Chem. Earth*, **21** (9), 867–879, doi:10.1046/j.1365-3040.1998.00328.x.
- 1315 Maier-Reimer, E. and K. Hasselmann, 1987: Transport and storage of CO₂ in the ocean - an inorganic ocean-circulation carbon cycle model. *Clim. Dynam.*, **2** (2), 63–90, doi:10.1007/BF01054491.
- Marotzke, J. and P. M. Forster, 2015: Forcing, feedback and internal variability in global temperature trends. *Nature*, **517** (7536), 565–U291, doi:10.1038/nature14117.
- Matthews, H. D., N. P. Gillett, P. A. Stott, and K. Zickfeld, 2009: The proportionality of global warming to cumulative carbon emissions. *Nature*, **459** (7248), 829+, doi:10.1038/nature08047.
- 1320 McKay, M. D., R. J. Beckman, and W. J. Conover, 1979: A comparison of three methods for selecting values of input variables in the analysis of output from a computer code. *Technometrics*, **21** (2), 239–245, doi:10.2307/1268522.
- McNeil, B. I. and R. J. Matear, 2007: Climate change feedbacks on future oceanic acidification. *Tellus B*, **59**, 191–198.
- 1325 Meinshausen, M., N. Meinshausen, W. Hare, S. C. B. Raper, K. Frieler, R. Knutti, D. J. Frame, and M. R. Allen, 2009: Greenhouse-gas emission targets for limiting global warming to 2°C. *Nature*, **458** (7242), 1158–1162, doi:10.1038/nature08017.
- Meinshausen, M., et al., 2011: The RCP greenhouse gas concentrations and their extension from 1765 to 2300. *Clim. Change*, **109**, 213–241, doi:10.1007/s10584-011-0156-z.
- 1330 Moss, R. H., et al., 2010: The next generation of scenarios for climate change research and assessment. *Nature*, **463** (7282), 747–756, doi:10.1038/nature08823.
- Müller, S. A., F. Joos, N. R. Edwards, and T. F. Stocker, 2006: Water mass distribution and ventilation time scales in a cost-efficient, three-dimensional ocean model. *J. Climate*, **19** (21), 5479–5499.
- 1335 Müller, S. A., F. Joos, G.-K. Plattner, N. R. Edwards, and T. F. Stocker, 2008: Modeled natural and excess radiocarbon: Sensitivities to the gas exchange formulation and ocean transport strength. *Global Biogeochem. Cy.*, **22** (3), doi:10.1029/2007GB003065.
- Murphy, J. M., D. M. H. Sexton, D. N. Barnett, G. S. Jones, M. J. Webb, and D. A. Stainforth, 2004: Quantification of modelling uncertainties in a large ensemble of climate change simulations. *Nature*, **430** (7001), 768–772, doi:10.1038/nature02771.
- 1340 Myhre, G., et al., 2013: *Climate Change 2013: The Physical Science Basis. Contribution of Working Group I to the Fifth Assessment Report of the Intergovernmental Panel on Climate Change*, chap. 8: Anthropogenic and Natural Radiative Forcing, 659–740. Cambridge University Press, Cambridge, United Kingdom and New York, NY, USA.

- 1345 Nieves, V., J. K. Willis, and W. C. Patzert, 2015: Recent hiatus caused by decadal shift in indo-pacific heating. *Science*, **349** (6247), 532–535, doi:10.1126/science.aaa4521.
- Olson, R., R. Sriver, M. Goes, N. M. Urban, H. D. Matthews, M. Haran, and K. Keller, 2012: A climate sensitivity estimate using Bayesian fusion of instrumental observations and an earth system model. *J. Geophys. Res.-Atmos.*, **117**, doi:10.1029/2011JD016620.
- 1350 Olson, R. J., J. M. O. Scurlock, S. D. Prince, D. L. Zheng, and J. K. R., 2001: NPP multi-biome: NPP and driver data for ecosystem model-data intercomparison. Data set, Oak Ridge National Laboratory Distributed Active Archive Center, Oak Ridge, Tennessee, U.S.A. <http://www.daac.ornl.gov>.
- Orr, J. C., 2011: *Ocean Acidification*, chap. 3: Recent and future changes in ocean carbonate chemistry, 41–66. Oxford University Press, New York, USA.
- 1355 Orr, J. C., et al., 2005: Anthropogenic ocean acidification over the twenty-first century and its impact on calcifying organisms. *Nature*, **437**, 681–686.
- Otto, A., et al., 2013: Energy budget constraints on climate response. *Nature Geosci.*, **6** (6), 415–416, doi:10.1038/ngeo1836.
- Parekh, P., F. Joos, and S. A. Müller, 2008: A modeling assessment of the interplay between aeolian iron fluxes and iron-binding ligands in controlling carbon dioxide fluctuations during antarctic warm events. *Paleoceanography*, **23** (4), doi:10.1029/2007PA001531.
- 1360 Peters, G. P., et al., 2013: Commentary: The challenge to keep global warming below 2 degrees C. *Nat. Clim. Ch.*, **3** (1), 4–6.
- Pfister, P. L. and T. F. Stocker, submitted: Earth system commitments due to delayed mitigation. *Environ. Res. Lett.*
- 1365 Plattner, G.-K., F. Joos, T. F. Stocker, and O. Marchal, 2001: Feedback mechanisms and sensitivities of ocean carbon uptake under global warming. *Tellus B*, **53** (5), 564–592.
- Pörtner, H.-O., M. Gutowska, A. Ishimatsu, M. Lucassen, F. Meizner, and B. A. Seibel, 2011: *Ocean Acidification*, chap. 8: Effects of ocean acidification on nektonic organisms, 154–175. Oxford University Press, New York, USA.
- 1370 Prentice, I. C., et al., 2001: *Climate Change 2001: The Scientific Basis. Contribution of Working Group I to the Third Assessment Report of the Intergovernmental Panel on Climate Change*, chap. The Carbon Cycle and Atmospheric Carbon Dioxide, 183–237. Cambridge University Press, Cambridge, United Kingdom and New York, NY, USA.
- 1375 Raich, J. W. and W. H. Schlesinger, 1992: The global carbon-dioxide flux in soil respiration and its relationship to vegetation and climate. *Tellus B*, **44** (2), 81–99, doi:10.1034/j.1600-0889.1992.t01-1-00001.x.
- Ritz, S. P., T. F. Stocker, and F. Joos, 2011a: A coupled dynamical ocean-energy balance atmosphere model for paleoclimate studies. *J. Climate*, **24** (2), 349–375, doi:10.1175/2010JCLI3351.1.
- Ritz, S. P., T. F. Stocker, and J. P. Severinghaus, 2011b: Noble gases as proxies of mean ocean temperature: sensitivity studies using a climate model of reduced complexity. *Quaternary Sci. Rev.*, **30** (25-26), 3728–3741, doi:10.1016/j.quascirev.2011.09.021.
- 1380 Roberts, C. D., M. D. Palmer, D. McNeall, and M. Collins, 2015: Quantifying the likelihood of a continued hiatus in global warming. *Nat. Clim. Ch.*, **5** (4), 337–342.

- Roemmich, D., J. Church, J. Gilson, D. Monselesan, P. Sutton, and S. Wijffels, 2015: Unabated planetary
1385 warming and its ocean structure since 2006. *Nat. Clim. Ch.*, **5** (3), 240–245, doi:10.1038/NCLIMATE2513.
- Rogelj, J., et al., 2011: Emission pathways consistent with a 2 degrees C global temperature limit. *Nat. Clim.
Ch.*, **1** (8), 413–418, doi:10.1038/NCLIMATE1258.
- Schleussner, C.-F., A. Levermann, and M. Meinshausen, 2014: Probabilistic projections of the atlantic over-
turning. *Clim. Change*, **127** (3-4), 579–586, doi:10.1007/s10584-014-1265-2.
- 1390 Schmittner, A., N. M. Urban, K. Keller, and D. Matthews, 2009: Using tracer observations to reduce the
uncertainty of ocean diapycnal mixing and climate-carbon cycle projections. *Global Biogeochem. Cy.*,
23 (GB4009), doi:10.1029/2008GB003421.
- Schwartz, S. E., 2012: Determination of earth’s transient and equilibrium climate sensitivities from observations
over the twentieth century: Strong dependence on assumed forcing. *Surveys in Geophys.*, **33** (3-4), 745–777,
1395 doi:10.1007/s10712-012-9180-4.
- Sherwood, S. C. and M. Huber, 2010: An adaptability limit to climate change due to heat stress. *Proc. Nat.
Acad. Sci. USA*, **107** (21), 9552–9555, doi:10.1073/pnas.0913352107.
- Shindell, D., 2014a: Reply to ‘questions of bias in climate models’. *Nat. Clim. Ch.*, **4** (9), 742–743.
- Shindell, D. T., 2014b: Inhomogeneous forcing and transient climate sensitivity. *Nat. Clim. Ch.*, **4** (4), 274–277,
1400 doi:10.1038/NCLIMATE2136.
- Shine, K. P., J. S. Fuglestedt, K. Hailemariam, and N. Stuber, 2005: Alternatives to the global warming po-
tential for comparing climate impacts of emissions of greenhouse gases. *Clim. Change*, **68** (3), 281–302,
doi:10.1007/s10584-005-1146-9.
- Siegenthaler, U. and H. Oeschger, 1978: Predicting future atmospheric carbon-dioxide levels. *Science*,
1405 **199** (4327), 388–395, doi:10.1126/science.199.4327.388.
- Sitch, S., et al., 2003: Evaluation of ecosystem dynamics, plant geography and terrestrial carbon cycling in the
LPJ dynamic global vegetation model. *Glob. Change Biol.*, **9** (2), 161–185.
- Spahni, R., F. Joos, B. D. Stocker, M. Steinacher, and Z. C. Yu, 2013: Transient simulations of the carbon and
nitrogen dynamics in northern peatlands: from the Last Glacial Maximum to the 21st century. *Clim. Past*, **9**,
1410 1287–1308, doi:doi:10.5194/cp-9-1287-2013.
- Stainforth, D. A., 2014: Climate projection: Testing climate assumptions. *Nat. Clim. Ch.*, **4** (4), 248–249.
- Steinacher, M., F. Joos, T. L. Frölicher, G.-K. Plattner, and S. C. Doney, 2009: Imminent ocean acidification
in the Arctic projected with the NCAR global coupled carbon cycle-climate model. *Biogeosciences*, **6** (4),
515–533.
- 1415 Steinacher, M., F. Joos, and T. F. Stocker, 2013: Allowable carbon emissions lowered by multiple climate
targets. *Nature*, **499** (7457), 197+, doi:10.1038/nature12269.
- Stocker, B. D., F. Feissli, K. M. Strassmann, R. Spahni, and F. Joos, 2014: Past and future carbon fluxes from
land use change, shifting cultivation and wood harvest. *Tellus B*, **66**, doi:10.3402/tellusb.v66.23188.
- Stocker, T. F., 2013: The closing door of climate targets. *Science*, **339** (6117), 280–282,
1420 doi:10.1126/science.1232468.
- Strassmann, K. M., F. Joos, and G. Fischer, 2008: Simulating effects of land use changes on carbon fluxes: past
contributions to atmospheric CO₂ increases and future commitments due to losses of terrestrial sink capacity.
Tellus B, **60** (4), 583–603, doi:10.1111/j.1600-0889.2008.00340.x.

- Strassmann, K. M., G.-K. Plattner, and F. Joos, 2009: CO₂ and non-CO₂ radiative forcings in climate projections for twenty-first century mitigation scenarios. *Clim. Dynam.*, **33** (6), 737–749, doi:10.1007/s00382-008-0505-4.
- 1425 Tarnocai, C., J. G. Canadell, E. A. G. Schuur, P. Kuhry, G. Mazhitova, and S. Zimov, 2009: Soil organic carbon pools in the northern circumpolar permafrost region. *Global Biogeochem. Cy.*, **23** (GB2023), doi:10.1029/2008GB003327.
- 1430 Tarnocai, C., D. Swanson, J. Kimble, and G. Broll, 2007: Northern circumpolar soil carbon database. Digital database, Research Branch, Agriculture and Agri-Food Canada, Ottawa, Canada. <http://wms1.agr.gc.ca/NortherCircumpolar/northercircumpolar.zip>.
- Trumbore, S. E., 2000: Age of soil organic matter and soil respiration: radiocarbon constraints on belowground C dynamics. *Ecol. Appl.*, **10**, 399–411.
- 1435 United Nations, 1992: United Nations Framework Convention on Climate Change. Document FCCC/INFORMAL/84 GE.05-62220 (E) 200705, United Nations. <http://unfccc.int/resource/docs/convkp/conveng.pdf>.
- United Nations, 2010: Report of the Conference of the Parties on its sixteenth session, held in Cancun from 29 November to 10 December 2010. Document FCCC/CP/2010/7/Add.1, United Nations. <http://unfccc.int/resource/docs/2010/cop16/eng/07a01.pdf>.
- 1440 van der Werf, G. R. and A. J. Dolman, 2014: Impact of the Atlantic Multidecadal Oscillation (AMO) on deriving anthropogenic warming rates from the instrumental temperature record. *Earth Syst. Dyn.*, **5** (2), 375–382, doi:10.5194/esd-5-375-2014.
- Van Vuuren, D. P., et al., 2008: Temperature increase of 21st century mitigation scenarios. *Proc. Nat. Acad. Sci. USA*, **105** (40), 15 258–15 262, doi:10.1073/pnas.0711129105.
- 1445 von Schuckmann, K. and P.-Y. Le Traon, 2011: How well can we derive global ocean indicators from Argo data? *Ocean Sci.*, **7** (6), 783–791, doi:10.5194/os-7-783-2011.
- Weyant, J. R., F. C. de la Chesnaye, and G. J. Blanford, 2006: Overview of EMF-21: Multigas mitigation and climate policy. *Energ. J.*, **27** (Special Issue 3), 1–32.
- 1450 Wigley, T. M. L. and S. C. B. Raper, 2001: Interpretation of high projections for global-mean warming. *Science*, **293** (5529), 451–454, doi:10.1126/science.1061604.
- Williamson, D., M. Goldstein, L. Allison, A. Blaker, P. Challenor, L. Jackson, and K. Yamazaki, 2013: History matching for exploring and reducing climate model parameter space using observations and a large perturbed physics ensemble. *Clim. Dynam.*, **41** (7-8), 1703–1729, doi:10.1007/s00382-013-1896-4.
- 1455 Yu, Z., J. Loisel, D. P. Broseau, D. W. Beilman, and S. J. Hunt, 2010: Global peatland dynamics since the last glacial maximum. *Geophys. Res. Lett.*, **37**, doi:10.1029/2010GL043584.
- Zaehle, S., S. Sitch, B. Smith, and F. Hatterman, 2005: Effects of parameter uncertainties on the modeling of terrestrial biosphere dynamics. *Global Biogeochem. Cy.*, **19** (3), doi:10.1029/2004GB002395.
- Zickfeld, K., M. Eby, H. D. Matthews, and A. J. Weaver, 2009: Setting cumulative emissions targets to reduce the risk of dangerous climate change. *Proc. Nat. Acad. Sci. USA*, **106** (38), 16 129–16 134, doi:10.1073/pnas.0805800106.
- 1460 Zickfeld, K. and T. Herrington, 2015: The time lag between a carbon dioxide emission and maximum warming increases with the size of the emission. *Environ. Res. Lett.*, **10** (3), doi:10.1088/1748-9326/10/3/031001.

Table 1. Response to a 100 GtC ~~carbon~~-CO₂ emission pulse on different time scales as simulated by the Bern3D-LPJ model (cf. Fig. 2). The values (ensemble median and 90 % range) indicate the difference to a baseline simulation without emission pulse after 20, 50, 100, and 500 years for the atmospheric CO₂ concentration ($\Delta p\text{CO}_2$), global annual mean surface temperature (ΔSAT), steric sea level rise (SSLR), Atlantic meridional overturning circulation (ΔAMOC), global annual mean surface ocean pH (ΔpH), annual mean surface aragonite saturation in the Southern Ocean ($\Delta\Omega_{\text{arag,S.O.}}$) and in the tropics ($\Delta\Omega_{\text{arag,trop.}}$), and global soil carbon stocks ($\Delta\text{C}_{\text{soil}}$).

Variable	Units	20 years	50 years	100 years	500 years
$\Delta p\text{CO}_2$	ppm	30.6 [26.9–33.8]	25.6 [21.0–29.6]	22.0 [17.3–26.6]	15.0 [11.2–21.9]
ΔSAT	°C	0.18 [0.10–0.27]	0.17 [0.10–0.30]	0.17 [0.09–0.32]	0.14 [0.06–0.35]
SSLR	cm	0.82 [0.51–1.15]	1.26 [0.68–1.99]	1.65 [0.80–2.81]	2.44 [1.03–5.82]
ΔAMOC	%	–2.4 [–4.0 to –0.8]	–2.1 [–4.5 to –0.3]	–1.8 [–4.5–0.0]	–0.8 [–3.9–0.7]
ΔpH	10 ^{–2}	–2.6 [–2.8 to –2.2]	–2.3 [–2.6 to –1.9]	–2.0 [–2.4 to –1.6]	–1.4 [–2.0 to –1.0]
$\Delta\Omega_{\text{arag,S.O.}}$	10 ^{–2}	–7.7 [–9.0 to –5.8]	–6.8 [–7.9 to –5.4]	–5.9 [–6.9 to –4.7]	–4.1 [–5.3 to –3.1]
$\Delta\Omega_{\text{arag,trop.}}$	10 ^{–2}	–12.7 [–13.9 to –11.4]	–10.8 [–12.2 to –9.2]	–9.3 [–10.8 to –7.7]	–6.5 [–8.5 to –5.2]
$\Delta\text{C}_{\text{soil}}$	GtC	1.11 [–1.03–5.22]	1.38 [–3.05–8.92]	1.42 [–6.82–12.01]	1.73 [–21.65–13.32]

Table 2. Transient (TCPRE^X) and peak ($\text{TCPRE}_{\text{peak}}^X$) response per 1000 Gt C total carbon- CO_2 emissions estimated with different methods. Ensemble medians and ~~6668 %~~ ranges-ranges (i.e. the 16% and 84% percentiles) are taken from the relative probability maps derived from all model configurations and scenarios at 1000, 2000, and 3000 Gt C total emissions as well as from the linear regression slope (see Methods). The correlation coefficient (r , median and 68 %-range) and the median standard error as percentage of the median regression slope ($\hat{\sigma}$) are given for the linear fit of the peak response.

Variable X	Method	TCPRE^X	$\text{TCPRE}_{\text{peak}}^X$	Goodness of linear fit
ΔSAT ($^{\circ}\text{C}$)	1000 Gt C	1.95 [1.12–3.38]	2.31 [1.49–3.81]	
	2000 Gt C	1.96 [1.23–3.12]	2.12 [1.37–3.30]	
	3000 Gt C	1.90 [1.27–2.66]	1.92 [1.29–2.68]	
	Lin. reg.	1.75 [1.18–2.48]	1.76 [1.14–2.56]	$r = 0.92 \pm 0.04$, $\hat{\sigma} = 36\%$
ΔSST ($^{\circ}\text{C}$)	1000 Gt C	1.47 [0.89–2.45]	1.68 [1.11–2.68]	
	2000 Gt C	1.40 [0.91–2.08]	1.49 [0.99–2.15]	
	3000 Gt C	1.30 [0.91–1.70]	1.32 [0.91–1.72]	
	Lin. reg.	1.30 [0.87–1.78]	1.31 [0.85–1.86]	$r = 0.92 \pm 0.04$, $\hat{\sigma} = 35\%$
SSLR (cm)	1000 Gt C	25 [14–44]	29 [18–48]	
	2000 Gt C	23 [14–38]	27 [17–42]	
	3000 Gt C	21 [13–32]	25 [17–36]	
	Lin. reg.	19 [12–25]	23 [15–33]	$r = 0.91 \pm 0.04$, $\hat{\sigma} = 39\%$
ΔAMOC (%)	1000 Gt C	–16 [–29 to –7]	–24 [–35 to –15]	
	2000 Gt C	–15 [–23 to –9]	–18 [–26 to –12]	
	3000 Gt C	–14 [–19 to –9]	–15 [–20 to –10]	
	Lin. reg.	–15 [–22 to –9]	–15 [–22 to –10]	$r = 0.8 \pm 0.1$, $\hat{\sigma} = 40\%$
ΔpH (1)	1000 Gt C	–0.19 [–0.22 to –0.15]	–0.20 [–0.23 to –0.18]	
	2000 Gt C	–0.18 [–0.21 to –0.16]	–0.18 [–0.21 to –0.15]	
	3000 Gt C	–0.17 [–0.19 to –0.15]	–0.17 [–0.19 to –0.15]	
	Lin. reg.	–0.18 [–0.20 to –0.16]	–0.17 [–0.19 to –0.15]	$r = 0.98 \pm 0.01$, $\hat{\sigma} = 12\%$
$\Delta\Omega_{\text{arag,S.O.}}$ (1)	1000 Gt C	–0.55 [–0.66 to –0.45]	–0.61 [–0.68 to –0.55]	
	2000 Gt C	–0.46 [–0.53 to –0.39]	–0.46 [–0.51 to –0.41]	
	3000 Gt C	–0.40 [–0.45 to –0.35]	–0.40 [–0.43 to –0.35]	
	Lin. reg.	–0.48 [–0.53 to –0.42]	–0.43 [–0.48 to –0.38]	$r = 0.87 \pm 0.05$, $\hat{\sigma} = 30\%$
$\Delta\Omega_{\text{arag,trop.}}$ (1)	1000 Gt C	–0.87 [–1.04 to –0.71]	–0.96 [–1.04 to –0.89]	
	2000 Gt C	–0.76 [–0.86 to –0.65]	–0.74 [–0.82 to –0.68]	
	3000 Gt C	–0.67 [–0.73 to –0.61]	–0.66 [–0.70 to –0.61]	
	Lin. reg.	–0.78 [–0.85 to –0.71]	–0.71 [–0.79 to –0.65]	$r = 0.93 \pm 0.03$, $\hat{\sigma} = 24\%$
$\Delta\text{C}_{\text{soil}}$ (Gt C)	1000 Gt C	–59 [–234 to +22]	–77 [–268 to –17]	
	2000 Gt C	–73 [–201 to –5]	–82 [–217 to –4]	
	3000 Gt C	–75 [–162 to –17]	–80 [–170 to –15]	
	Lin. reg.	–26 [–85 to +24]	–39 [–122 to +25]	$r = 0.7_{-0.7}^{+0.1}$, $\hat{\sigma} = 165\%$

Table 3. Same as Table 2, but Inverse values of TCPRE^X and $\text{TCPRE}_{\text{peak}}^X$ for fossil-fuel carbon emissions only. I.e. the gross-different climate parameters. The values are determined at 1000 Gt C total and fossil-fuel CO_2 emissions from deforestation, respectively, and are not included when regressing given for the 68% and 90% percentiles of the responses against cumulative carbon-probability distribution. Under the assumption of linearity, the allowable emissions (see Methods) to meet a given target with 68% or 90% probability can be estimated by multiplying the corresponding value in the table with the target value of the climate parameter. ΔC_{soil} is omitted in this table due to its non-linear response and large uncertainty.

Variable	Units	Total emissions		Fossil-fuel emissions	
		$P = 68\%$	$P = 90\%$	$P = 68\%$	$P = 90\%$
$[\text{TCPRE}^{\Delta\text{SAT}}]^{-1}$	Gt C/ $^{\circ}\text{C}$	402	245	360	219
$[\text{TCPRE}_{\text{peak}}^{\Delta\text{SAT}}]^{-1}$		351	215	315	194
$[\text{TCPRE}^{\Delta\text{SST}}]^{-1}$	Gt C/ $^{\circ}\text{C}$	532	329	479	296
$[\text{TCPRE}_{\text{peak}}^{\Delta\text{SST}}]^{-1}$		479	294	426	262
$[\text{TCPRE}^{\text{SSLR}}]^{-1}$	Gt C/cm	31.2	19.6	27.8	17.2
$[\text{TCPRE}_{\text{peak}}^{\text{SSLR}}]^{-1}$		27.8	17.9	25.6	16.1
$[\text{TCPRE}^{\Delta\text{AMOC}}]^{-1}$	Gt C/%	-46.6	-30.3	-42.3	-27.9
$[\text{TCPRE}_{\text{peak}}^{\Delta\text{AMOC}}]^{-1}$		-35.3	-25.1	-33.4	-23.8
$[\text{TCPRE}^{\Delta\text{pH}}]^{-1}$	Gt C	-5000	-4348	-4348	-3846
$[\text{TCPRE}_{\text{peak}}^{\Delta\text{pH}}]^{-1}$		-4545	-4000	-4348	-3704
$[\text{TCPRE}^{\Delta\Omega_{\text{arag,S.O.}}}]^{-1}$	Gt C	-1667	-1449	-1515	-1316
$[\text{TCPRE}_{\text{peak}}^{\Delta\Omega_{\text{arag,S.O.}}}]^{-1}$		-1563	-1429	-1471	-1333
$[\text{TCPRE}^{\Delta\Omega_{\text{arag,trop.}}}]^{-1}$	Gt C	-1042	-926	-935	-840
$[\text{TCPRE}_{\text{peak}}^{\Delta\Omega_{\text{arag,trop.}}}]^{-1}$		-1010	-926	-943	-870

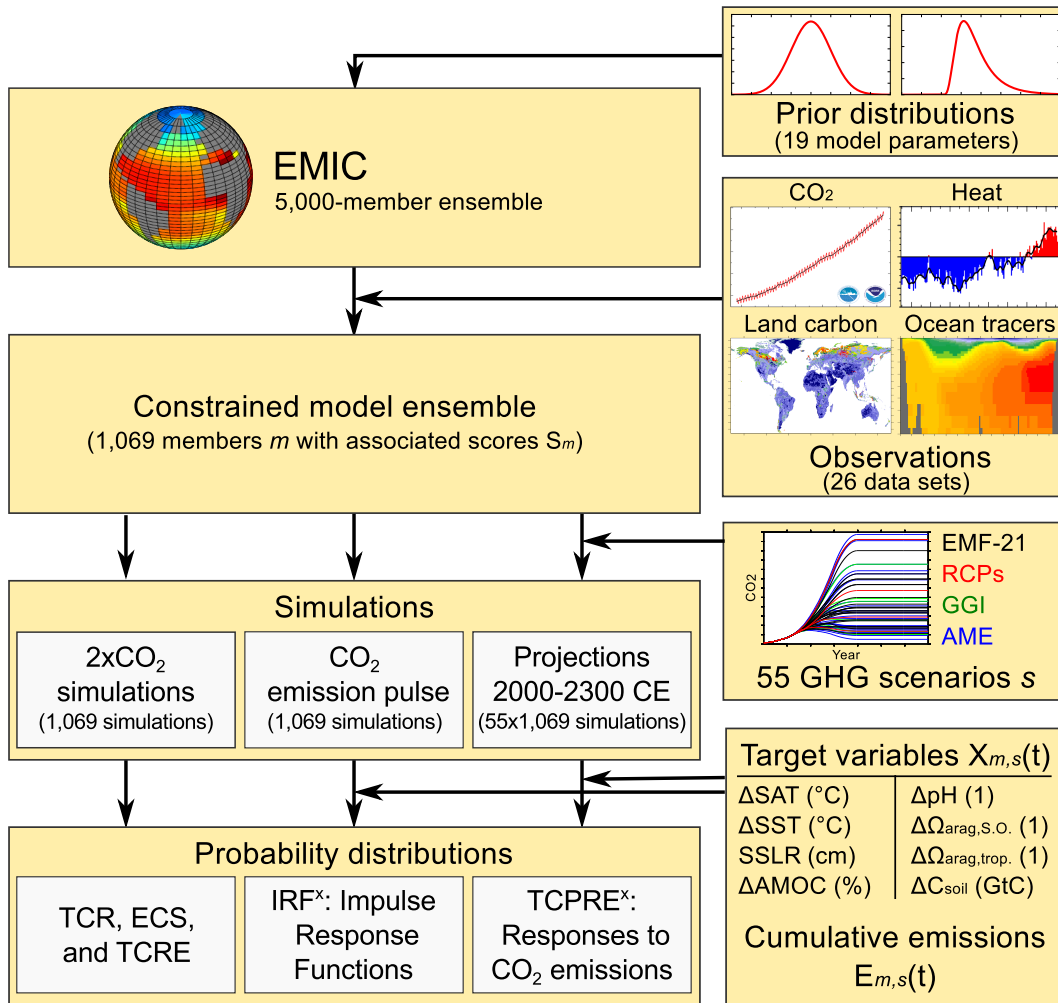


Figure 1. Flowchart illustrating the applied methodology. First, an ensemble of model configurations is generated from prior distributions of model parameters. Then the ensemble is constrained by 26 observational data sets by calculating a skill score (S_m) for each ensemble member (m). In the next step, the constrained model ensemble is run into the future under multiple greenhouse gas scenarios (s) as well as for idealized $2x\text{CO}_2$ and CO_2 emission pulse simulations. Finally, probability distributions $p(E, X)$ of transient and peak responses can be calculated from multiple target variables ($X_{m,s}(t)$) these simulations for TCR, ECS, and cumulative carbon emissions ($E_{m,s}(t)$) TCRE as well as for TCPRE^X and IRF^X and different climate parameters, X .

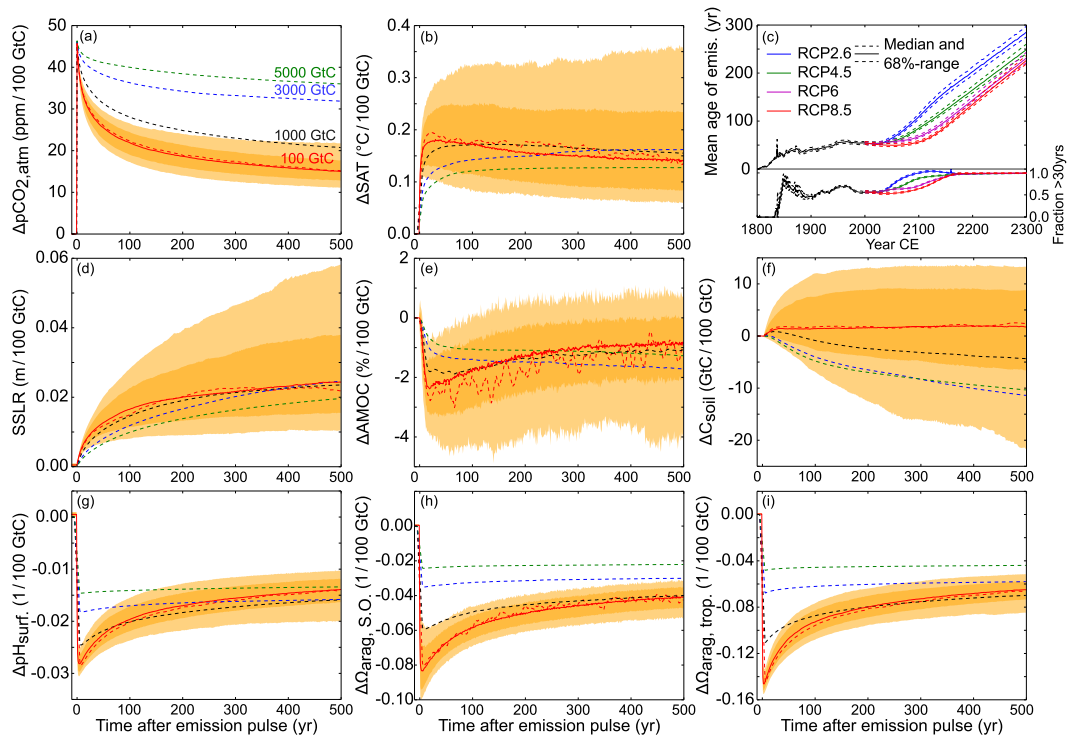


Figure 2. Response to an emission pulse of 100 GtC added to an atmospheric concentration of 389 ppm. Ensemble median (solid red line) and 68/90 % ranges (dark/light orange) of changes in (a) atmospheric CO₂, (b) surface air temperature, (d) steric sea level rise, (e) Atlantic meridional overturning circulation, (f) global soil carbon stocks, (g) global mean surface ocean pH, (h) southern and (i) tropical ocean surface aragonite saturation are shown. The dashed lines show the response (per 100 GtC) for median parameters and pulse sizes of 100 (red), 1000 (black), 3000 (blue), and 5000 GtC (green). (c) shows the mean age of past emissions over the historical period and for the four RCP scenarios (left axis), and the fraction of the emissions older than 30 years (right axis) versus calendar years. More than half of the emissions are older than ~30 years. The bulk of the emissions at any calendar year is thus in the age range (x-axis in the other panels) where the pulse response function varies within a limited range for surface air temperature (b), surface pH (g) steric sea level rise (d) and Atlantic meridional overturning (e). This implies an approximately linear relationship between cumulative emissions and response-can-be-expected-responses in scenarios where the response function is roughly constant on time scales similar to the age of emissions these variables.

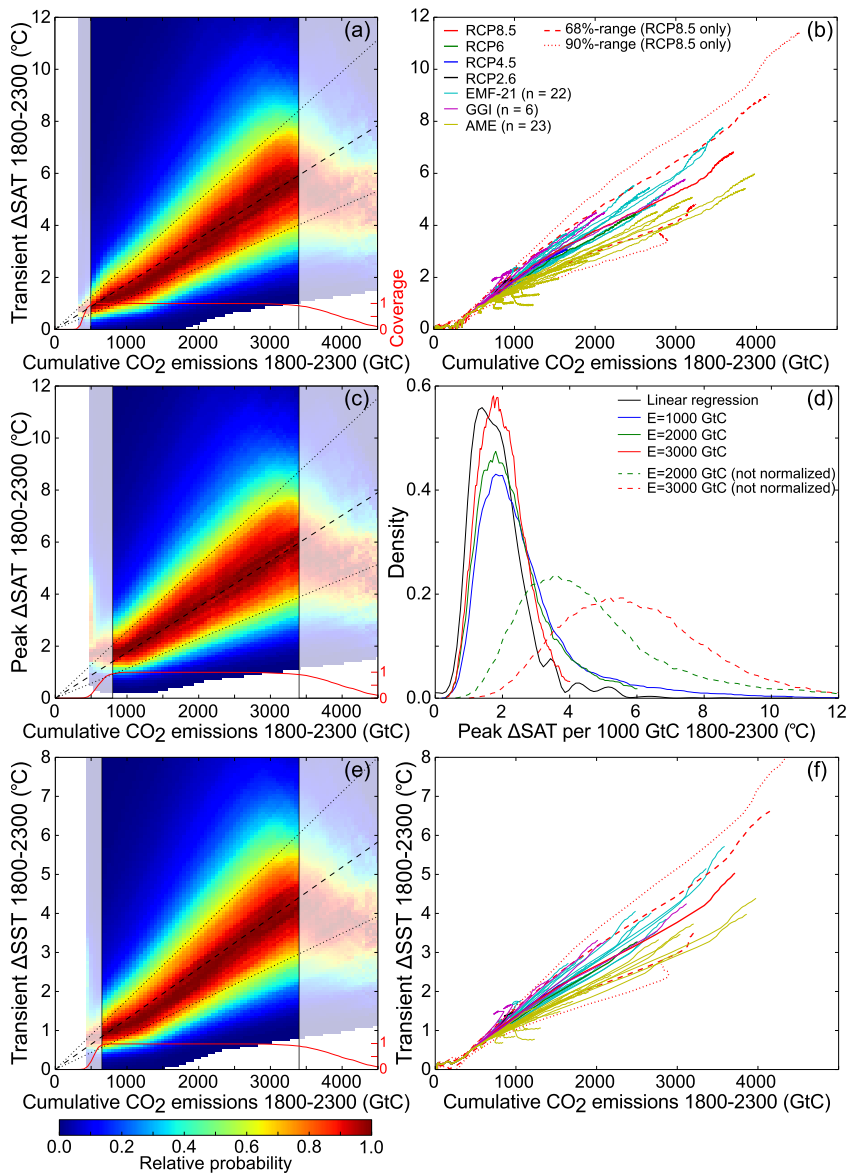


Figure 3. Transient and peak warming as function of cumulative emissions: **(a)** relative probability of transient surface air temperature change (ΔSAT) for given cumulative CO₂ emissions (fossil fuel and deforestation), derived from annual values from ensemble model simulations for 55 greenhouse-gas emission scenarios. Black dashed lines show the median and 68 %-range of the linear regression slope. The red line indicates the coverage of the emission range by the model ensemble. High and low emission ranges with a coverage of less than 90 % are shaded and considered not robust. **(b)** Transient ΔSAT response (ensemble median) for the 55 different scenarios. The dashed/dotted lines show the 68/90 %-range of the ensemble for the RCP8.5 scenario, to indicate the model-spread. Please note that our extensions of the RCP scenarios beyond 2100 are not identical to the Extended Concentration Pathways (ECP, see Methods). **(c)** Same as **(a)** but for the peak warming for given total cumulative emissions. **(d)** PDFs of the peak warming for 1000 (blue), 2000 (green), and 3000 GtC (red) cumulative emissions, and for the linear regression (black). The dashed lines indicate the unscaled PDFs and solid lines the normalized response per 1000 GtC from the higher emission levels (green and red), and for the linear regression (black), respectively. **(e, f)** Same as **(a, b)** but for transient sea surface temperature change (ΔSST).

Response as function of fossil-fuel carbon emissions: (a) same as Fig. 3a but for cumulative fossil-fuel emissions only, i.e. CO₂ emissions from deforestation are not included in this figure (see methods). (b-d) Same as (a) but for the transient steric sea level rise (SSLR), sea surface temperature change (Δ SST), and global annual mean surface ocean pH (Δ pH_{surf}). The response of the remaining variables to fossil-fuel only carbon emissions are given in Table A2.

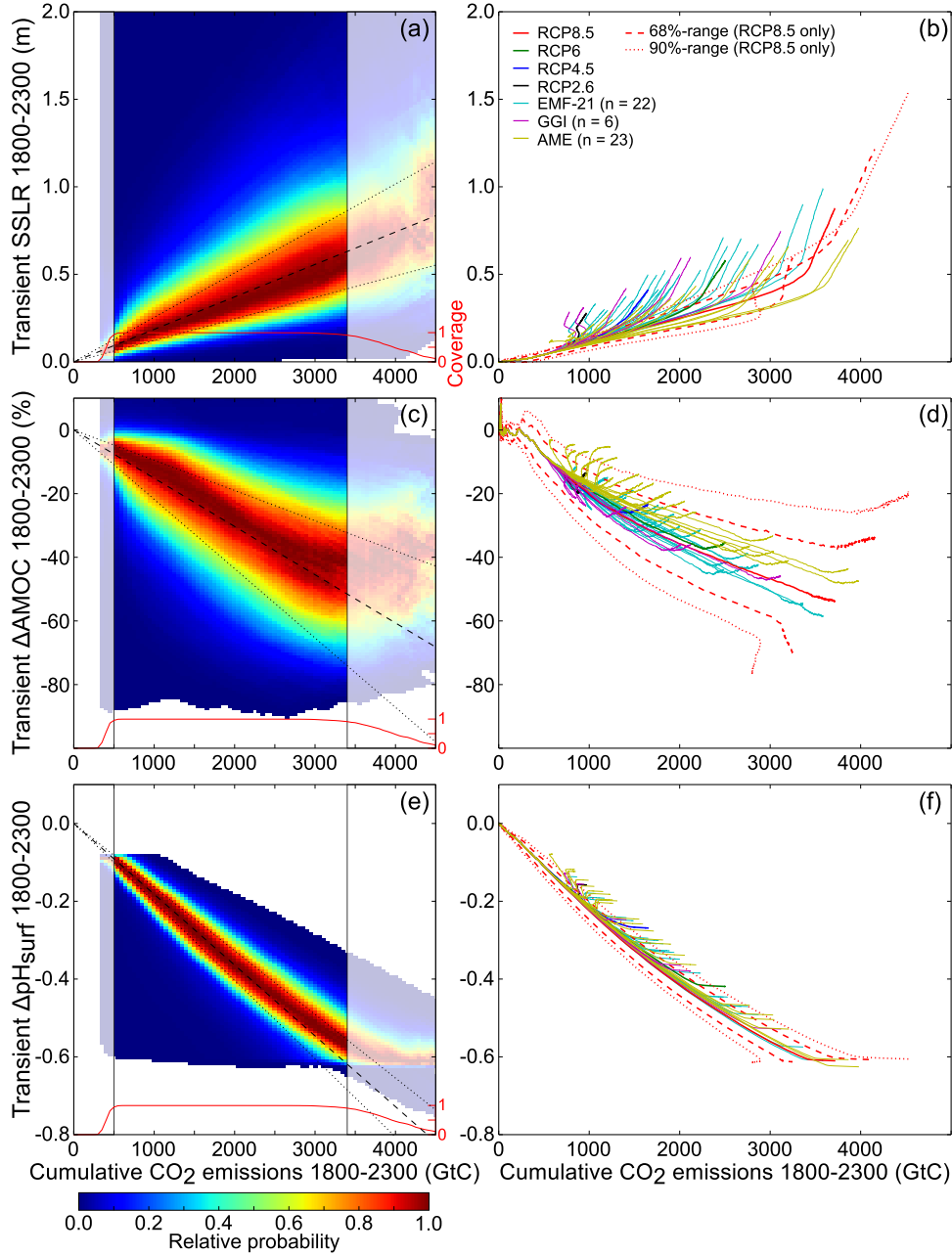


Figure 4. Response of SSLR, AMOC, and pH to cumulative CO₂ emissions (including deforestation), similar to Fig. 3a and b.

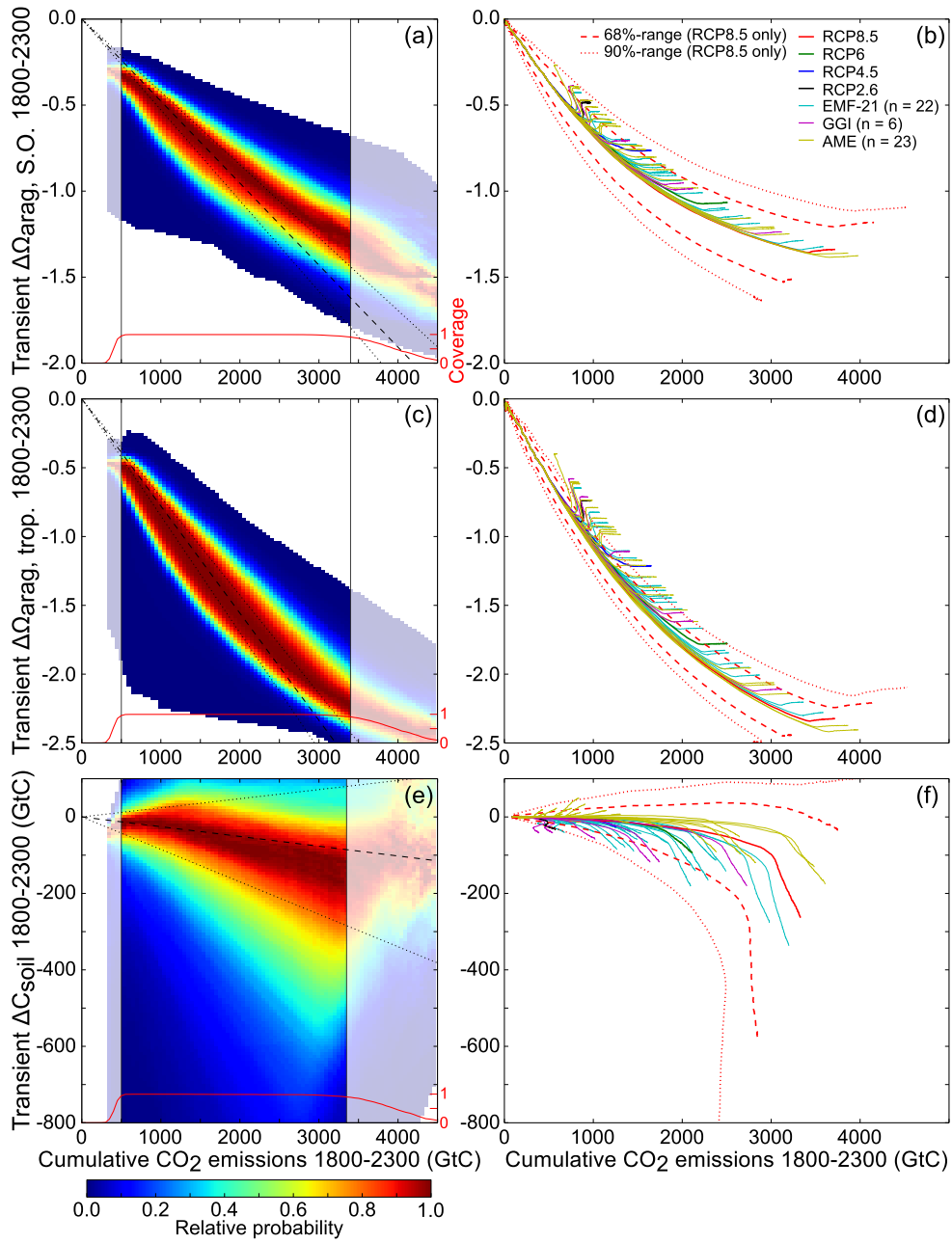


Figure 5. Same as Fig. 4 but for the transient response in surface aragonite saturation state in the Southern Ocean and in the tropics, and in global soil carbon stocks.

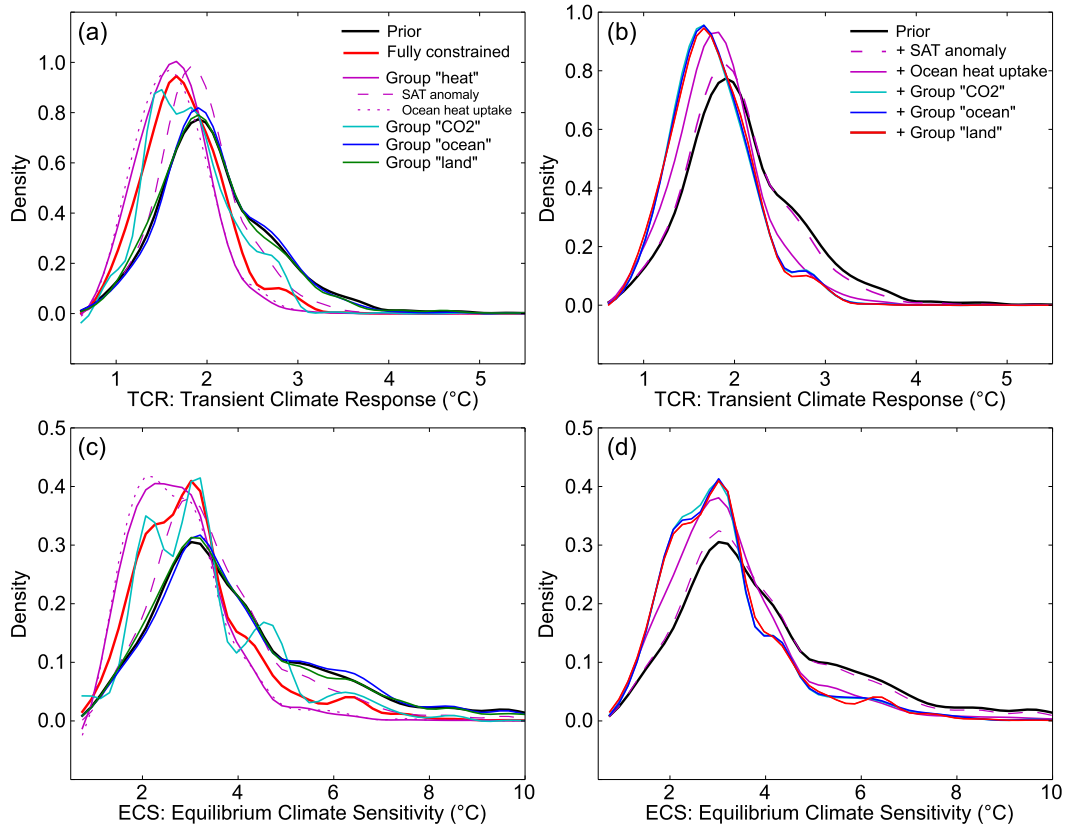


Figure 6. PDFs of transient climate response (**a**, **b**) and equilibrium climate sensitivity (**c**, **d**) derived from the model ensemble and for different observation-based constraints. In (**a** and **c**) the PDFs are shown for the ensemble without constraints (prior, black line), for the case when each of the constraint groups “heat” (magenta), “CO₂” (cyan), “ocean” (blue), and “land” (green) is applied alone with equal weights, and for all constraints (red). The group “heat” is split up further into SAT anomaly (dashed magenta) and ocean heat uptake observations (dotted magenta). In (**b** and **d**) the constraints are added sequentially with their corresponding weights in the full constraint in the following order: SAT anomaly (magenta dashed), ocean heat uptake (magenta solid), CO₂ (cyan), ocean (blue), and land (red, corresponding to the full constraint).

Table A1. Sampled model parameters with plausible ranges based on literature and/or expert judgment (p_{\min} , p_{\max}). Normal prior distributions $N(x; p_{\text{std}}, \sigma) = \frac{1}{\sqrt{2\pi}\sigma} \exp(-\frac{(x-p_{\text{std}})^2}{2\sigma^2})$ with $\sigma = \frac{p_{\max}-p_{\min}}{4}$ are chosen for ranges that are basically symmetric with respect to the standard parameter value (p_{std}). Log-normal priors $L(x; p_{\text{std}}, s, l) = \frac{1}{\sqrt{2\pi}s(x-l)} \exp(-\frac{(\ln(x-l)-\ln(p_{\text{std}}-l))^2}{2s^2})$ are used for asymmetric ranges, with s and l chosen such that the median of the distribution matches p_{std} and the standard-deviation σ is $\frac{1}{4}$ of the parameter range, as for the normal distribution.

Parameter	Description	p_{std}	p_{\min}	p_{\max}	Prior	Refs.
α_a	Photosynthesis scaling parameter (leaf to canopy)	0.5	0.3	0.7	$N(p_{\text{std}}, \sigma)$	Zaehle et al. (2005); Haxelmeier and Prentice (1996)
α_{C_3}	Intrinsic quantum efficiency of CO ₂ uptake (C ₃ plants)	0.08	0.02	0.125	$N(p_{\text{std}}, \sigma)$	Zaehle et al. (2005); Farquhar et al. (1980); Hallgren and Pitman (2000)
$\theta^* = 1 - \theta$	Co-limitation shape parameter (light vs. Rubisco act.)	0.3	0.004	0.8	$L(p_{\text{std}}, 0.54, 0)$	Zaehle et al. (2005); Collaty et al. (1990); Leverenz (1988)
g_m	Max. canopy conductance	3.26	2.5	18.5	$L(p_{\text{std}}, 1.05, 1.5)$	Zaehle et al. (2005); Magnani et al. (1998)
τ_{sapwood}	Sapwood to heartwood turnover (yr)	20	5	100	$L(p_{\text{std}}, 0.76, 0)$	Zaehle et al. (2005); Bartelink (1998)
mort_{max}	Asymptotic maximum mortality rate (yr ⁻¹)	0.01	0.005	0.1	$L(p_{\text{std}}, 1.19, 0)$	Zaehle et al. (2005)
$\text{resp}_{O_{10}, \text{eq}}$	Temp. sensitivity of respiration and soil decomp.	2.4	1.3	3.3	$N(p_{\text{std}}, \sigma)$	Lloyd and Taylor (1994); Raich and Schlesinger (1992)
$k_{\text{soil, scale}}$	Scaling factor for SOM decomp. rates at 10 °C	1.0	0.5	2.0	$L(p_{\text{std}}, 0.41, 0.2)$	Trumbore (2000)
f_{soil}	Fraction of decomp. litter entering soil pools (%)	40	20	60	$N(p_{\text{std}}, \sigma)$	Zaehle et al. (2005); Jenkinson (1990)
f_{slow}	Fraction of soil-bound litter entering slow soil pool (%)	1.5	1.0	15	$L(p_{\text{std}}, 1.05, 0)$	Zaehle et al. (2005); Kergoat (1998)
$C_{\text{peat, scale}}$	Initial soil carbon in NH peatlands (GtC)	420	190	650	$N(p_{\text{std}}, \sigma)$	Tarnocai et al. (2009)
CS	Nominal equilibrium climate sensitivity (°C)	3	1	10	$L(p_{\text{std}}, 0.58, 0)$	Knutti et al. (2003); Meinshausen et al. (2009)
$\text{diff}_{\text{zonal}}$	Zonal atmospheric eddy-diffusivity (10 ⁶ m ² s ⁻¹)	1.0	0.1	10	$L(p_{\text{std}}, 1.06, 0)$	Ritz et al. (2011a)
$\text{diff}_{\text{merid, scale}}$	Scaling factor for meridional atm. eddy-diffusivity	1.0	0.5	2.0	$L(p_{\text{std}}, 0.34, 0)$	Ritz et al. (2011a)
diff_{dia}	Ocean diapycnal diffusivity (10 ⁻⁵ m ² s ⁻¹)	1.0	0.2	20	$L(p_{\text{std}}, 1.35, 0)$	Edwards and Marsh (2005); Meinshausen et al. (2009)
diff_{iso}	Ocean isopycnal diffusivity (m ² s ⁻¹)	1,000	300	9,000	$L(p_{\text{std}}, 1.01, 0)$	Edwards and Marsh (2005); Huang et al. (2003)
$k_{\text{gas, scale}}$	Scaling factor for standard OCMIP gas transfer velocity	0.81	0.65	0.97	$N(p_{\text{std}}, \sigma)$	Müller et al. (2008)
$\text{RF}_{\text{GHG, scale}}$	Scaling factor for total RF from well mixed GHG	1.0	0.92	1.12	$L(p_{\text{std}}, 0.17, 0.7)$	Forster et al. (2007)
$\text{RF}_{\text{aerosol, scale}}$	Scaling factor for total aerosol RF	1.0	0.5	2.0	$L(p_{\text{std}}, 0.35, 0)$	Forster et al. (2007)

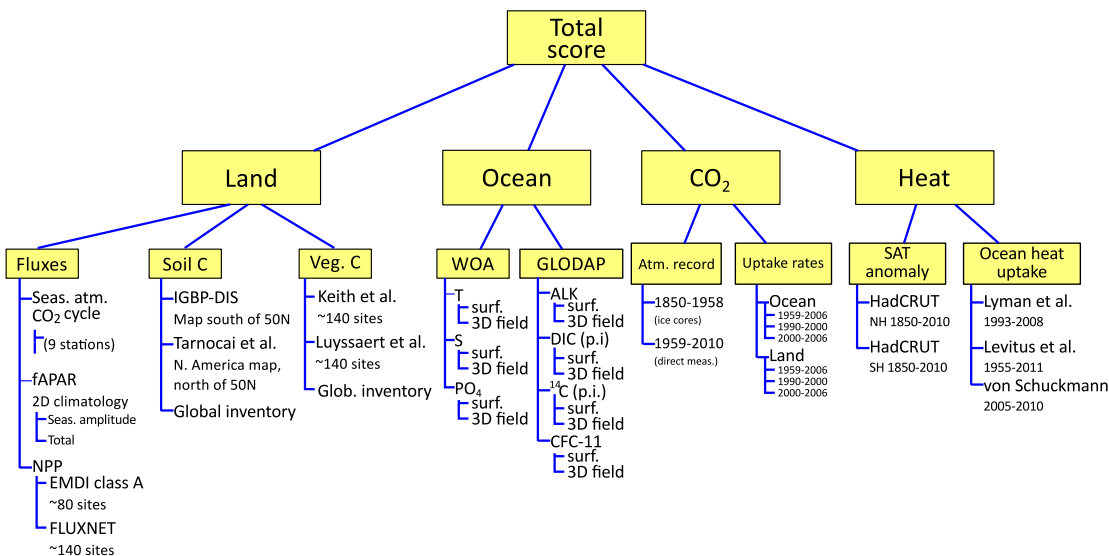


Figure A1. Observation-based data sets used to constrain the model ensemble. The data sets are organized in a hierarchical structure to balance the weight of individual data sets and model skill scores are aggregated by averaging over the group of constraints at the same level in the hierarchy (Steinacher et al., 2013).

Table A2. Same as Table 2, but for fossil-fuel CO₂ emissions only. I.e. the gross emissions from deforestation are not included when regressing the responses against cumulative CO₂ emissions (see Methods).

Variable X	Method	TCPRE ^{X}	TCPRE ^{X} _{peak}	Goodness of linear fit
Δ SAT (°C)	1000 Gt C	2.17 [1.25–3.79]	2.56 [1.64–4.25]	
	2000 Gt C	2.12 [1.36–3.32]	2.26 [1.47–3.47]	
	3000 Gt C	1.94 [1.33–2.68]	1.96 [1.34–2.70]	
	Lin. reg.	1.88 [1.28–2.69]	1.87 [1.22–2.78]	$r = 0.91 \pm 0.04$, $\hat{\sigma} = 35\%$
Δ SST (°C)	1000 Gt C	1.62 [0.98–2.70]	1.86 [1.22–3.01]	
	2000 Gt C	1.50 [1.00–2.19]	1.58 [1.06–2.25]	
	3000 Gt C	1.33 [0.95–1.72]	1.35 [0.94–1.73]	
	Lin. reg.	1.38 [0.95–1.93]	1.39 [0.91–2.00]	$r = 0.91 \pm 0.04$, $\hat{\sigma} = 35\%$
SSLR (cm)	1000 Gt C	29 [16–49]	32 [19–52]	
	2000 Gt C	24 [15–40]	29 [19–45]	
	3000 Gt C	22 [14–33]	26 [18–37]	
	Lin. reg.	20 [13–27]	25 [16–35]	$r = 0.90 \pm 0.04$, $\hat{\sigma} = 36\%$
Δ AMOC (%)	1000 Gt C	–18 [–31 to –8]	–25 [–37 to –16]	
	2000 Gt C	–16 [–24 to –10]	–19 [–27 to –12]	
	3000 Gt C	–14 [–20 to –9]	–15 [–20 to –11]	
	Lin. reg.	–16 [–23 to –10]	–16 [–24 to –10]	$r = 0.8^{+0.1}_{-0.2}$, $\hat{\sigma} = 41\%$
Δ pH (1)	1000 Gt C	–0.21 [–0.25 to –0.18]	–0.22 [–0.25 to –0.20]	
	2000 Gt C	–0.19 [–0.22 to –0.17]	–0.19 [–0.22 to –0.17]	
	3000 Gt C	–0.18 [–0.19 to –0.16]	–0.17 [–0.19 to –0.16]	
	Lin. reg.	–0.19 [–0.22 to –0.18]	–0.18 [–0.20 to –0.16]	$r = 0.97 \pm 0.01$, $\hat{\sigma} = 17\%$
$\Delta\Omega_{\text{arag,S.O.}}$ (1)	1000 Gt C	–0.61 [–0.73 to –0.50]	–0.65 [–0.73 to –0.59]	
	2000 Gt C	–0.48 [–0.56 to –0.41]	–0.48 [–0.53 to –0.43]	
	3000 Gt C	–0.41 [–0.46 to –0.36]	–0.41 [–0.45 to –0.37]	
	Lin. reg.	–0.51 [–0.56 to –0.46]	–0.46 [–0.52 to –0.41]	$r = 0.80 \pm 0.04$, $\hat{\sigma} = 35\%$
$\Delta\Omega_{\text{arag,trop.}}$ (1)	1000 Gt C	–0.98 [–1.15 to –0.81]	–1.02 [–1.11 to –0.94]	
	2000 Gt C	–0.80 [–0.90 to –0.70]	–0.78 [–0.85 to –0.72]	
	3000 Gt C	–0.70 [–0.74 to –0.64]	–0.68 [–0.72 to –0.64]	
	Lin. reg.	–0.84 [–0.91 to –0.77]	–0.76 [–0.84 to –0.69]	$r = 0.89 \pm 0.03$, $\hat{\sigma} = 28\%$
ΔC_{soil} (Gt C)	1000 Gt C	–66 [–260 to +25]	–81 [–288 to +24]	
	2000 Gt C	–80 [–212 to –9]	–89 [–228 to –9]	
	3000 Gt C	–74 [–154 to –17]	–80 [–163 to –16]	
	Lin. reg.	–28 [–91 to +26]	–42 [–132 to +27]	$r = 0.7^{+0.1}_{-0.7}$, $\hat{\sigma} = 158\%$

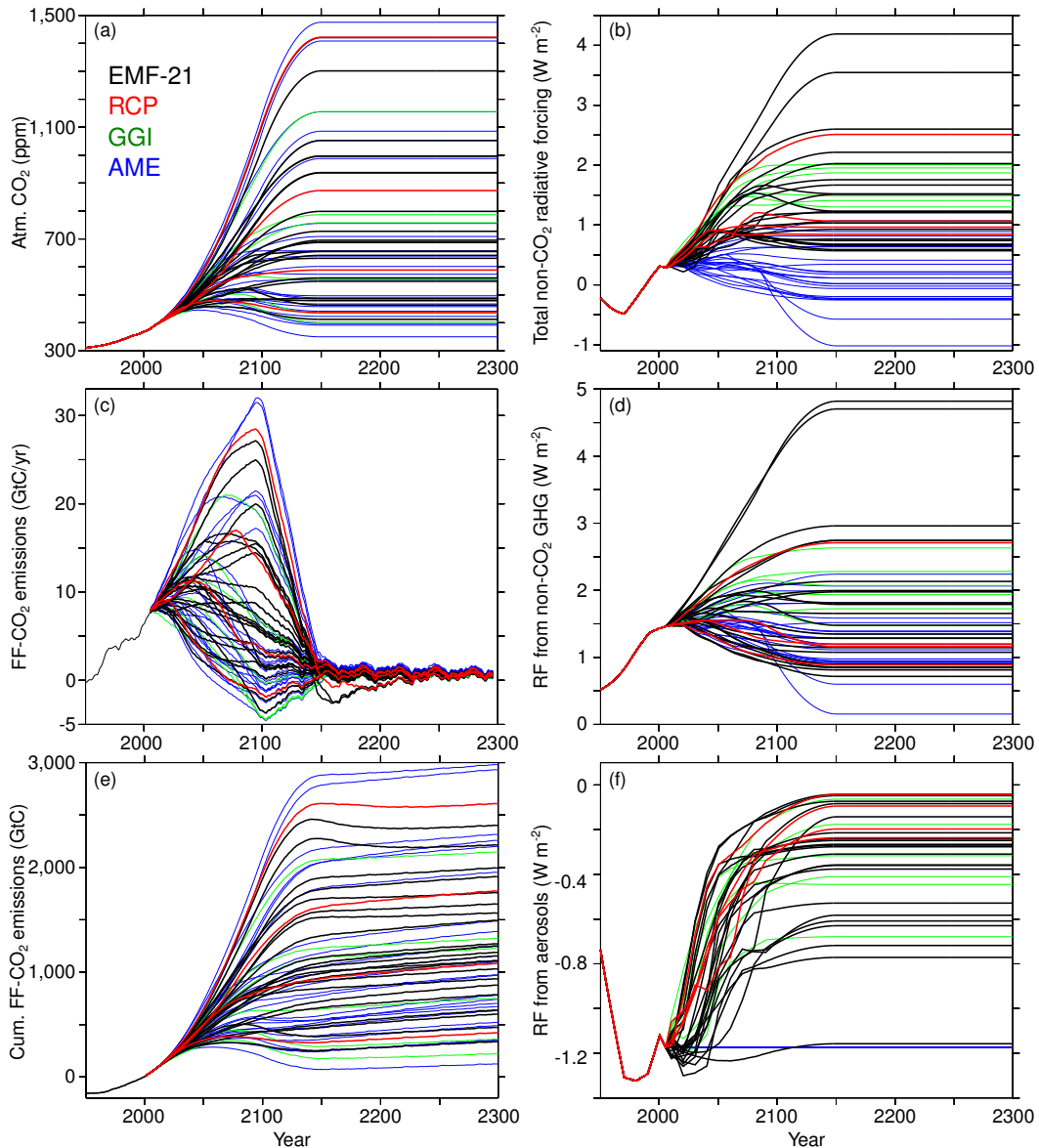


Figure A2. Time series of (a) atmospheric CO₂ and (b) total non-CO₂ radiative forcing prescribed in the scenario simulations. The forcings are derived from 22 EMF-21 (black), 4 RCPs (red), 6 GGI (green), and 23 AME (blue) scenarios. After 2100 the scenarios are extended to 2300 by stabilizing CO₂ concentrations and non-CO₂ radiative forcing by 2150. The total non-CO₂ radiative forcing is the sum of the forcing from (d) non-CO₂ greenhouse gases and (f) aerosols. Please note that for the AME scenarios the aerosol forcing is kept constant after 2005 because no aerosol emission paths are available for this scenarios. (c) Annual and (e) cumulative fossil-fuel CO₂ emissions diagnosed with the standard model parameter settings are shown for reference. The annual emissions are smoothed with a 10-year moving average filter. The cumulative emissions are given relative to the year 2000.

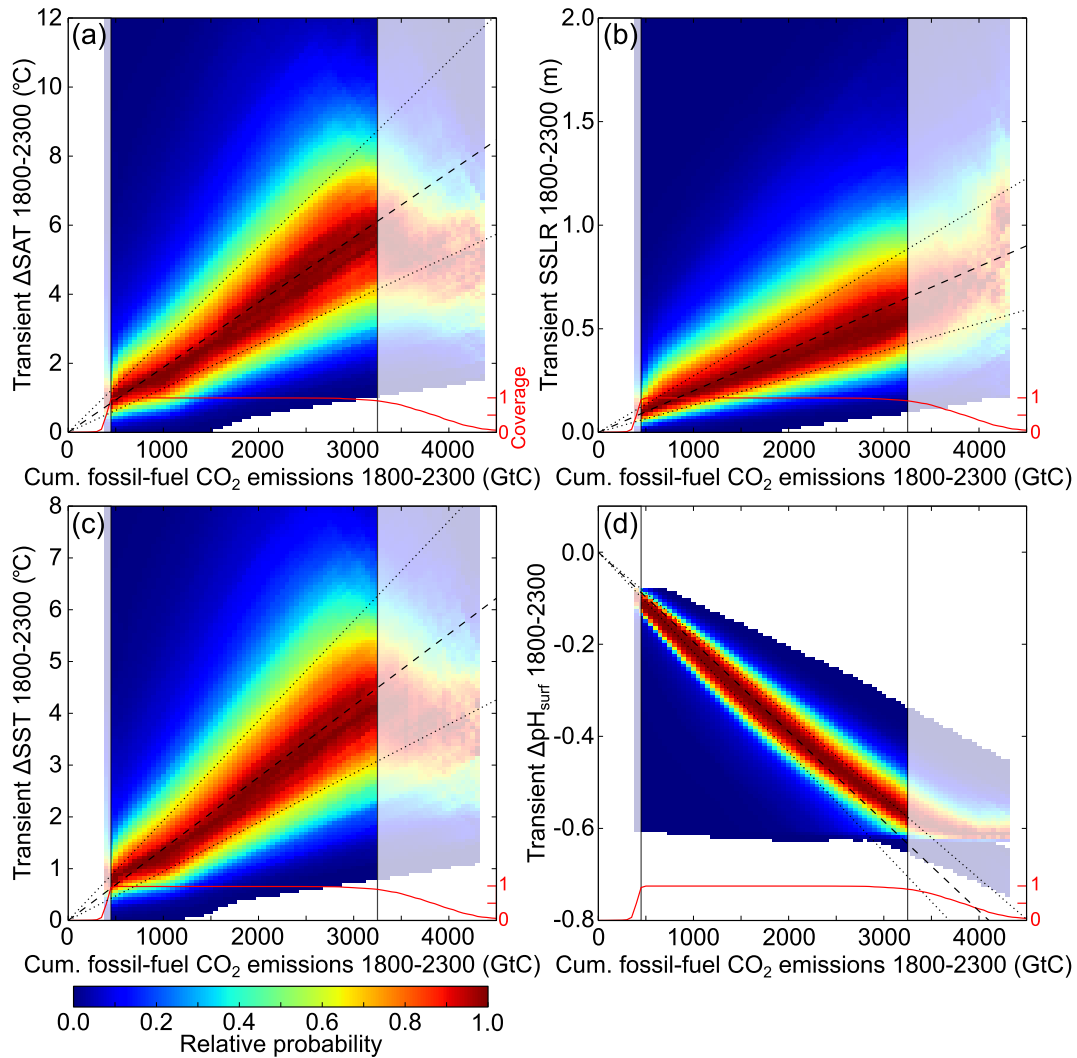


Figure A3. Response as function of fossil-fuel CO₂ emissions: (a) same as Fig. 3a but for cumulative fossil-fuel emissions only, i.e. CO₂ emissions from deforestation are not included in this figure (see methods). (b–d) Same as (a) but for the transient steric sea level rise (SSLR), sea surface temperature change (ΔSST), and global annual mean surface ocean pH (ΔpH_{surf}). The response of the remaining variables to fossil-fuel only CO₂ emissions are given in Table A2.