

Response to second review after major revisions of “Earth system responses to cumulative carbon emissions”, Biogeosciences Discuss., 12, 9839-9877, doi:10.5194/bgd-12-9839-2015, 2015.

M. Steinacher and F. Joos, January 2016

We would like to thank the reviewer for taking the time to assess our revised manuscript and for providing helpful and constructive comments again.

Please find below our detailed response (bold font) to the reviewer's comments (*italic*). We followed the advice by the reviewer in virtually all cases. A revised version of the manuscript with the modification highlighted (track-changed) is added to this response.

Almost ready for publication

Review of: "Transient Earth system responses to cumulative carbon dioxide emissions: linearities, uncertainties, and probabilities in an observation-constrained model ensemble."

Overall evaluation:

The manuscript has been greatly improved from the original version. The methods and goals of the numerical experiments are now clearly outlined, satisfying my primary criticism of the original manuscript. I have a few more minor comments on the manuscript but believe it will be ready for publication after these changes have been made.

We are pleased to hear that our revisions have improved the original manuscript in the intended way.

Specific Comments:

Line 3: Change “transient response in” to “transient response of”

Done.

There are a few place in the manuscript where the phrase “A ~1000 member” is used. This should be “An ~1000 member”.

Changed in three places.

Line 30: write out “e.g.” as “for example” or “such as”.

Changed to “such as”.

Line 35: Cite Zickfeld et al. 2012 and Harrington and Zickfeld 2014 here.

Done.

Line 44: You can change the citation to Paris Agreement 2015.

We have added the following sentence:

“An objective of the recent Paris agreement (United Nations, 2015) is to hold «the increase in the global average temperature to well below 2 °C above pre-industrial levels and to pursue efforts to limit the temperature increase to 1.5 °C above pre-industrial levels».”

Consequently, we also added the following sentence to the discussion in section 4.2 to be consistent:

“Correspondingly, allowable total carbon emissions to meet the 1.5 °C target mentioned in the Paris agreement (United Nations, 2015) are 526 GtC.”

On a different note, we have also added the IPCC AR5 range for TCRE, which was missing in the results section 3.2:

“In IPCC AR5, TCRE is estimated to be likely in the range of 0.8 °C to 2.5 °C for cumulative emissions up to about 2000 GtC (IPCC, 2013).”

Line 55: I think “ocean warming” would sound better than “sea water warming”.

Changed.

Line 57: Delete commas around “but”.

Done.

Line 65: May be better phrased as the difference between the system the model represents and the actual system the model is intended to describe. In the present wording it is unclear whether “coupled Earth system” refers to a model or the natural world.

We have clarified this as follows:

“Second, limitations in our process understanding likely lead to differences between the simulated response to emissions and the response of the actual system the model is intended to describe. This constitutes an additional uncertainty, termed the model or response uncertainty.”

Line 70 to 73: The sentence “They allow ... public.” is confusing. Please re-write for clarity.

We have split the sentence in two parts to make it more readable:

“They allow one to quantify the response uncertainty and to compare results from different sources, such as ensemble model simulations, model intercomparisons, or observation-based estimates. Due to their relative simplicity, metrics also ease the communication among scientists and between scientists, stakeholders, and the public.”

Line 126: TCPRE is getting to be a very long acronym. Maybe shorten to “Transient parameter response to cumulative CO₂ emissions (TPRE)” or something similar.

We agree that TCPRE is a somewhat cumbersome acronym. Also, we realized that there might be a potential confusion regarding the term 'parameter' as it is used for 'climate parameter' as well as for 'model parameter'. We therefore decided to shorten the acronym to TRE^X, which simply represents the Transient Response to cumulative CO₂ Emissions for any variable X. Also, we use the term 'climate variable' instead of 'climate parameter' in the revised manuscript to avoid any confusion with model parameters. (See manuscript with highlighted changes.)

Line 129: “steric” is missing from “sea level”

Changed to “steric sea level change”.

“Please note” is used a few times in the manuscript I think this would read better as just “Note”.

Changed.

Line 381: Delete “on the other hand”.

Done.

Line 485: “as well as a very rough proxy for soil fertility”. Either find a citation for this or delete.

We have deleted that part of the sentence.

Line 501 to 505: This sentence is too long. Please break it up for clarity.

Done. This passage now reads:

“We start with a description of the model setup, followed by theoretical considerations. Then we discuss linearity in the context of CO₂-only scenario uncertainty by analyzing median model responses. After that, we investigate the response uncertainty by relying on the full model ensemble and compare scenario and response uncertainty. Finally, we briefly address the scenario uncertainty due to non-CO₂ forcing.”

Line 574: Change “much depend” to “depend much”

Done.

Line 744: Write out “Twenty-six”.

Done.

References:

Herrington T, Zickfeld K (2014) Path independence of climate and carbon cycle response over a broad range of cumulative carbon emissions. *Earth System Dynamics* 5(2):409–422

Zickfeld K, Arora V, Gillett N (2012) Is the climate response to CO₂ emissions path dependent? *Geophysical Research Letters* 39(5)

Transient Earth system responses to cumulative carbon dioxide emissions: linearities, uncertainties, and probabilities in an observation-constrained model ensemble

M. Steinacher^{1,2} and F. Joos^{1,2}

¹Climate and Environmental Physics, University of Bern, 3012 Bern, Switzerland

²Oeschger Centre for Climate Change Research, University of Bern, 3012 Bern, Switzerland

Correspondence to: M. Steinacher (steinacher@climate.unibe.ch)

Abstract. Information on the relationship between cumulative fossil CO₂ emissions and multiple climate targets is essential to design emission mitigation and climate adaptation strategies. In this study, the transient response in-of a climate parameter-or environmental variable per trillion ton of CO₂ emissions, termed TCPRE-TRE, is quantified for a set of impact-relevant climate parameters
5 variables and from a large set of multi-forcing scenarios extended to year 2300 towards stabilization. A-An ~1000 member ensemble of the Bern3D-LPJ carbon-climate model is applied and model outcomes are constrained by 26 physical and biogeochemical observational data sets in a Bayesian, Monte-Carlo type framework. Uncertainties in TCPRE-TRE estimates include both scenario uncertainty and model response uncertainty. Cumulative fossil emissions of 1000 GtC result in a global
10 mean surface air temperature change of 1.9 °C (68 % confidence interval (c.i.): 1.3 to 2.7 °C), a decrease in surface ocean pH of 0.19 (0.18 to 0.22), and in a steric sea level rise of 20 cm (13 to 27 cm until 2300). Linearity between cumulative emissions and transient response is high for pH and reasonably high for surface air and sea surface temperatures, but less pronounced for changes in Atlantic Meridional Overturning, Southern Ocean and tropical surface water saturation with respect
15 to biogenic structures of calcium carbonate, and carbon stocks in soils. The constrained model ensemble is also applied to determine the response to a pulse-like emission and in idealized CO₂-only simulations. The Transient Climate Response is constrained, primarily by long-term ocean heat observations, to 1.7 °C (68 % c.i.: 1.3 to 2.2 °C) and the Equilibrium Climate Sensitivity to 2.9 °C (2.0 to 4.2 °C). This is consistent with results by CMIP5 models, but inconsistent with recent studies that
20 relied on short-term air temperature data affected by natural climate variability.

1 Introduction

How multiple climate targets are related to allowable CO₂ emissions provides basic information to design policies aimed to minimize severe or irreversible damage from anthropogenic climate

change (Steinacher et al., 2013). The emission of carbon dioxide from burning of fossil fuels is
25 by far the most dominant driver of the ongoing anthropogenic climate change and of ocean acidi-
fication (IPCC, 2013; Gattuso et al., 2015). The increase of a broad set of climate variables such
as atmospheric carbon dioxide (CO₂), CO₂ radiative forcing, global air surface temperature or
ocean acidification depends on cumulative CO₂ emissions (Allen et al., 2009; IPCC, 1995). It is
thus informative to quantify the link between cumulative, total CO₂ emissions and different climate
30 ~~parameters~~variables. It is advantageous to represent a climate target, ~~e.g. such as~~ the 2 °C global
mean surface air temperature target by the United Nations, in terms of allowable total CO₂ emis-
sions, as total CO₂ emissions is an easy to communicate emission mitigation goal. While the link
between cumulative CO₂ emissions and global mean surface air temperature has been extensively
studied (IPCC, 2013), relatively little attention has been paid to the relationship between cumulative
35 CO₂ emissions and other impact-relevant variables such as ocean acidification or sea level rise ~~or~~
~~ocean acidification~~(Zickfeld et al., 2012; Herrington and Zickfeld, 2014) . However, considering the
link to emissions for other variables and from the global to the regional scale appears important as
many impact-relevant changes are not directly related to global mean surface air temperature.

It is also important to quantify the uncertainty in these links with CO₂ emissions by using proba-
40 bilistic, observation-constrained approaches or multi-model ensembles. This enables one to establish
a budget for the amount of allowable carbon emissions if a given climate target or a set of targets is to
be met with a given probability. Such budgets in probabilistic terms have been established for surface
air temperature, but only recently for a set of multiple climate-impact relevant variables (Steinacher
et al., 2013).

45 A climate target that is currently recognized by most world governments (United Nations, 2010)
places a limit of two degrees Celsius on the global mean warming since preindustrial times. An
objective of the recent Paris agreement (United Nations, 2015) is to hold "the increase in the global
average temperature to well below 2 °C above pre-industrial levels and to pursue efforts to limit the
temperature increase to 1.5 °C above pre-industrial levels". This target emerged from the interna-
50 tional negotiation process following the United Nations Framework Convention of Climate Change
(United Nations, 1992) that entered in force in 1994. Yet, the United Nations Framework Con-
vention of Climate Change has multiple objectives. It calls for the avoidance of dangerous anthropogenic
interference within the climate system as well as to allow for ecosystems to adapt naturally to cli-
mate change, to ensure food production, and to enable sustainable economic development. These
55 objectives cannot be encapsulated in one single target, e.g., a global mean surface air temperature
target, but may require multiple targets. These may be specific for individual regions and compo-
nents of the climate system, which includes the atmosphere, hydrosphere, biosphere and geosphere
and their interactions (United Nations, 1992). For example, targets may include bounds for sea level
rise, ocean acidification, and ~~sea-water-ocean~~ warming that threatens marine ecosystem function-
60 ing and services (IPCC, 2014; Gattuso et al., 2015; Howes et al., 2015). Ocean acidification is, like

global warming, progressing with anthropogenic CO₂ emissions ~~, but,~~ but unlike global warming, largely independent of the emissions and atmospheric abundance of non-CO₂ forcing agents. It is thus expected that the quantitative link to cumulative CO₂ emissions is different for ocean acidification ~~parameters~~ variables, e.g., surface ocean pH, than for global mean surface air temperature. In
65 general, the quantitative relationship to emissions and its uncertainty ranges are distinct for different individual target variables.

Climate projections are associated with two fundamentally distinct types of uncertainties (e.g. Hawkins and Sutton, 2009). First, the scenario uncertainty arises from the fact that future anthropogenic emissions are not known because they depend largely on human actions and decisions, such
70 as climate policies, technological advances, and other socio-economic factors. Second, ~~the limited understanding of limitations in our process understanding likely lead to differences between the simulated response to emissions and~~ the response of the ~~coupled Earth system to the emissions for a given scenario~~ actual system the model is intended to describe. This constitutes an additional uncertainty, termed the model or response uncertainty.

75 Well-defined metrics that summarize the Earth system response to a given forcing by a single or few values are useful in many aspects. They allow one to quantify the response uncertainty ~~,~~ and to compare results from different sources, such as ensemble model simulations, model intercomparisons, or observation-based estimates, ~~and ease, due.~~ Due to their relative simplicity, metrics also ease the communication among scientists and between scientists, stakeholders, and the public. The
80 Transient Climate Response (TCR) and the Equilibrium Climate Sensitivity (ECS) are such metrics, which are used to quantify the global mean surface air temperature (SAT) change associated with a doubling of atmospheric CO₂ (e.g. Knutti and Hegerl, 2008). The TCR measures the short-term response (i.e. the temperature increase at the time of doubling atmospheric CO₂ in a simulation with 1 % yr⁻¹ increase), while the ECS quantifies the long-term response after reaching a new equilib-
85 rium of the system under the increased radiative forcing. TCR and ECS are metrics for the physical climate system and they do not depend on the carbon cycle response (e.g. Huber and Knutti, 2014; Kummer and Dessler, 2014). TCR and ECS depend both on multiple physical feedbacks such as the water vapor, the ice-albedo, or the cloud feedbacks. TCR depends also on the rate of ocean heat uptake. ECS itself does not depend on the rate of ocean heat uptake, while observationally constrained
90 estimates of ECS do.

Certain metrics are helpful to reduce the scenario-dependency of results, which may facilitate the communication in a mitigation policy context (Allen et al., 2009). One such metric is the response to a pulse-like emission of CO₂ and other forcing agents as applied to compute global warming potentials used in the greenhouse gas basket approach of the Kyoto protocol (Joos et al., 2013;
95 Myhre et al., 2013). Another metric is the Transient Climate Response to cumulative CO₂ Emissions (TCRE), which links the global mean surface air temperature increase to the total amount of CO₂ emissions. In addition to the physical climate response, these metrics also depend on the response

of the carbon cycle. TCRE is a useful metric because it has been shown that global warming is largely proportional to cumulative CO₂ emissions and almost independent of the emission pathway (Allen et al., 2009; Matthews et al., 2009; Zickfeld et al., 2009; IPCC, 2013; Gillett et al., 2013). It essentially represents the combination of the TCR and the cumulative airborne fraction of CO₂ (Gregory et al., 2009; Collins et al., 2013). More recently, additional metrics, the equilibrium and multi-millennial climate response to cumulative CO₂ emission, have been proposed to evaluate the long-term link between global mean surface air temperature and emission (Frölicher and Paynter, 2015).

There is an apparent discrepancy between the TCR estimated with the most recent set of Earth System Models (ESM) versus some recent studies that invoke observational constraints (Otto et al., 2013) and simplified models (Schwartz, 2012; Collins et al., 2013). These latter studies suggest the possibility of a TCR below 1 °C, i.e. outside the very likely range given in the Fourth Assessment Report of the IPCC (Collins et al., 2013). Shindell (2014b, a) suggest that there are biases in simple models that do not adequately account for the spatial distribution of forcings. Shindell found by analyzing ESM output that the transient climate sensitivity to historical aerosol and ozone forcing is substantially greater than to CO₂ forcing due to their spatial differences. Taking this into account resolves the discrepancies in TCR estimates. Stainforth (2014) concluded from the study by Shindell (2014b) that probabilistic 21st century projections based on simple models and observational constraints under-weight the possibility of high impacts and over-weight low impacts on multi-decadal timescales. Huber and Knutti (2014) find that the TCR and ECS of the ESMs are consistent with recent climate observations when natural variability and updated forcing data are considered. Kummer and Dessler (2014) concluded that considering a $\approx 33\%$ higher efficacy of aerosol and ozone forcing than for CO₂ forcing would resolve the disagreement between estimates of ECS based on the twentieth century observational record and those based on climate models, the paleoclimate record, and interannual variations. van der Werf and Dolman (2014) applied a multiple regression approach using historical temperature and radiative forcing data to find that recent temperature trends are influenced by natural modes of variability such as the Atlantic Multi-decadal Oscillation. They estimated TCR to be above 1 °C using century-long records. Yet, an updated probabilistic quantification of the TCR, ECS, and TCRE with a spatially-explicit model and constrained by a broad set of observations is missing.

The goals of this study are (i) to establish the relation between cumulative CO₂ emissions and changes in illustrative, impact-relevant Earth System ~~parameters~~variables, (ii) to quantify TCRE, TCR and ECS, and (iii) to establish the response of different Earth System ~~parameters~~variables to an emission pulse, i.e. the Impulse Response Function. In analogy to TCRE, we introduce a new metric, the Transient ~~Climate-Parameter~~ Response to cumulative CO₂ Emissions (~~TCPRE~~-TCPRETRE). TRE^X is the change in a climate ~~parameter~~variable, X, in response to cumulative CO₂ emissions of 1000 GtC. To this end, we analyzed ~~TCPRE~~-TRE for variables that we deemed impact relevant

135 and also reasonably well represented in our model including surface air temperature, sea surface
temperature, ~~sea level~~steric sea level change, ocean acidity, carbon storage in soils, and ocean over-
turning. The link and the linearity between the responses in the different variables and cumulative
CO₂ emissions is investigated in a structured way with an observation-constrained model ensemble
and a large set of emissions scenarios. This allows us not only to address the scenario uncertainty
140 but also the model uncertainty. We quantify uncertainties related to specific greenhouse gas emission
trajectories, i.e. scenario uncertainty, by analyzing responses to CO₂ emission pulses as well as to
a set of 55 scenarios representing the evolution of carbon dioxide and other radiative agents. The
response uncertainties for these scenarios are quantified with ~~a~~an ~1000-member model ensemble
constrained by 26 observational data sets in a Bayesian, Monte-Carlo-type framework with an Earth
145 System Model of Intermediate Complexity. The model features spatially-explicit representations of
land use forcing, vegetation and carbon dynamics, as well as physically consistent surface-to-deep
transport of heat and carbon by a 3-D, dynamic model ocean, thereby partly overcoming deficiencies
identified for box-type models used in earlier probabilistic assessments (Shindell, 2014b, a). This al-
lows us also to reassess the probability density distribution, including best estimates and confidence
150 ranges, for the Equilibrium Climate Sensitivity (ECS), the Transient Climate Response (TCR), and
the Transient Climate Response to cumulative CO₂ Emissions (TCRE).

This paper is structured in the following way. In the methods section, first the modeling framework
is introduced (section 2.1). Specific subsections deal with model parameter selection and sampling
(2.1.1), observational constraints and the calculation of model skill scores (2.1.2), the procedure for
155 model spin-up (2.1.3), scenario choices and model simulations (2.1.4). The following sections then
cover the definition of TCRE and ~~TCPRE~~TRE^X (2.2), the calculation of probability density func-
tions (2.3) and how the linearity of the responses to cumulative CO₂ emissions is tested (2.4). Finally,
we discuss the selection of the analyzed climate ~~parameters~~variables (X) in section 2.5. In the re-
sults section, we first discuss the response in various climate ~~parameters~~variables to CO₂ emission
160 pulses of various magnitude to gain insight to which extent we may expect linearity in the response
to emissions (section 3.1). In section 3.2, we present results for the ~~TCPRE~~TRE of the global mean
surface air and surface ocean temperatures, steric sea level rise, the Atlantic Meridional Overturning
Circulation, global mean surface ocean pH, the saturation of surface waters in the Southern Ocean
and the tropics with respect to calcium carbonate, as used to build coral reefs and shells and other
165 structures of marine organisms, and finally global soil carbon stocks. In section 3.3, results for the
transient and equilibrium climate sensitivity are presented. Discussion and conclusions complete the
paper.

2 Methods

2.1 Modeling framework

170 We apply the Bern3D-LPJ model in a Bayesian, probabilistic, observation-constrained approach which is described in detail by Steinacher et al. (2013). Probabilistic assessments are widely used to determine probability distributions of model parameters, climate sensitivity and many other climate ~~parameters~~ variables (e.g. Wigley and Raper, 2001; Knutti et al., 2002, 2003; Murphy et al., 2004; Knutti et al., 2005; Schleussner et al., 2014; Bodman et al., 2013; Little et al., 2013; Harris et al., 175 2013; Holden et al., 2013; Bhat et al., 2012; Holden et al., 2010; Olson et al., 2012; Williamson et al., 2013). The Bern3D model was used in connection with an Ensemble Kalman Filter to constrain model parameters and regional air-sea carbon fluxes from observations (Gerber et al., 2009; Gerber and Joos, 2010, 2013). The Bern3D-LPJ is an Earth system Model of Intermediate Complexity (EMIC) that consists of a three-dimensional dynamic ocean component (Müller et al., 2006; Parekh 180 et al., 2008) including sea-ice (Ritz et al., 2011a), a two-dimensional energy and moisture balance model of the atmosphere (Ritz et al., 2011a, b), and a comprehensive terrestrial biosphere model with dynamic vegetation (Sitch et al., 2003), permafrost, peatland (Spahni et al., 2013), and land-use (Strassmann et al., 2008) modules.

We rely here on simulations presented by Steinacher et al. (2013) as described in the following 185 subsections and illustrated in Fig. 1. Uncertainties in physical and carbon-cycle model parameters, radiative efficiencies, climate sensitivity, and carbon-cycle feedbacks are taken into account by varying 19 key model parameters to generate a model ensemble with 5000 members (Table A1). Each ensemble member is assigned a skill score based on how well the model version is able to represent the observational constraints. This skill score is used as a weight to compute probability density 190 functions and ensemble means for different model outcomes.

2.1.1 Model parameter sampling

Nineteen model parameters are sampled for the generation of the model ensemble (Table A1). The selection of these parameters has to balance computational costs versus maximum coverage of the parameter space that is relevant for the model variables we are interested in.

195 Three parameters are sampled from the energy and moisture balance model of the atmosphere. Most important, the nominal equilibrium climate sensitivity (ECS) determines the equilibrium warming per change in radiative forcing. Technically, this is implemented by translating a given value for ECS to a value for the feedback parameter λ (Ritz et al., 2011a, b) using a calibration curve. λ accounts for all feedbacks in the model that are not explicitly resolved. Diffusivity coefficients, 200 $\text{diff}_{\text{zonal}}$ and $\text{diff}_{\text{merid, scale}}$, control the depth-integrated heat fluxes (Ritz et al., 2011a, b). The uniform zonal diffusivity is specified directly and $\text{diff}_{\text{merid, scale}}$ is a scaling factor for the latitude-dependent meridional diffusivity.

The selection of the most relevant parameters for terrestrial photosynthesis, hydrology, vegetation dynamics, soil organic matter decomposition and turnover is largely based on a previous study by (Zaehle et al., 2005). They analyzed an earlier version of the model by sampling 36 parameters and identified the most important ones in controlling carbon fluxes and pool sizes. Perhaps not surprisingly, the most influential parameters either directly govern the input flux of carbon into a carbon pool or the time scale of carbon overturning for individual pools.

Four parameters are sampled that govern carbon assimilation and transpiration of water. These are a scaling parameter to upscale assimilation from the leaf to the canopy level (α_a), the intrinsic quantum efficiency of CO₂ uptake for C3 plants (α_{C3}), a shape parameter specifying the degree of co-limitation by light and Rubisco activity (θ), and a parameter that influences the link between canopy conductance and evapotranspiration (g_m), and thereby soil hydrology and water limitation of photosynthesis. These parameters were identified as the four most important ones controlling NPP and heterotrophic respiration and they are among the eight most important parameters controlling carbon pool sizes (Zaehle et al., 2005).

Two parameters are sampled that control the turnover of carbon in vegetation. These are the time scale governing the conversion of sapwood to heartwood (τ_{sapwood}) and the maximum mortality rate of trees (mort_{max}). Four parameters are sampled that govern the carbon turnover in mineral soils. The fractions f_{soil} and f_{slow} determine how much of decomposing litter enters the fast and slow overturning soil pools and how much is released directly to the atmosphere. $k_{\text{soil, scale}}$ is a global scaling factor applied to the spatial and temporal variable decomposition rates of organic carbon in the fast and slow soil pools. Litter and soil decomposition rates depend on soil temperature and thus are influenced by global warming. The parameter governing the temperature sensitivity of these rates is also sampled. Finally, $C_{\text{peat, scale}}$ determines the initial amount of carbon stored in northern peatlands.

Three parameters are sampled from the Bern3D ocean component. diff_{dia} and diff_{iso} are the diapycnal and isopycnal diffusivities that control the ocean circulation and thus the transport and vertical mixing of heat, carbon, and other tracers (Müller et al., 2006; Schmittner et al., 2009). $k_{\text{gas, scale}}$ is a scaling factor applied to the OCMIP-2 air-sea gas transfer velocity field (Müller et al., 2008) and affects the oceanic uptake of anthropogenic carbon. The ocean carbonate chemistry and marine biology parameters are not perturbed in this study in order to save computational costs. The ocean chemistry is very well understood and the relevant parameters are already well constrained (Dickson, 2002). The marine biology parameters are considered of secondary importance for this study, and when compared to the parameters affecting the physical transport and uptake of anthropogenic carbon (Joos et al., 1999; Plattner et al., 2001; Heinze, 2004; Gangstø et al., 2008; Kwon et al., 2009).

Finally, two parameters were sampled to modulate the radiative forcing from well mixed greenhouse gases ($\text{RF}_{\text{GHG, scale}}$) and aerosols ($\text{RF}_{\text{aerosol, scale}}$). They are applied as scaling factors to the pre-

240 scribed time series (or to the simulated radiative forcing in the case of atmospheric CO₂) and reflect the uncertainties given by Forster et al. (2007).

We generate a 5000-member ensemble from the prior distributions of those 19 key model parameters using the Latin hypercube sampling method (McKay et al., 1979). The prior distributions are selected such that the median matches the standard model configuration and the standard deviation is $\frac{1}{4}$ of the plausible parameter range based on literature and/or expert judgment (Table A1). Normal prior distributions are chosen for ranges that are basically symmetric with respect to the standard parameter value and log-normal priors are used for asymmetric ranges.

2.1.2 Observational constraints and the computation of skill scores

26 observation-based data sets are used to constrain the model results including projected Earth system changes, allowable carbon emissions to meet a climate target or metrics such as the transient and equilibrium climate sensitivity. A single skill score is computed by comparing observations and model outcomes for each ensemble member and across all data sets. The data sets are organized in a hierarchical structure to balance the weight of individual data sets and groups of data. The skill scores are used to weight results from individual ensemble members for the computation of ensemble mean and uncertainties (probability density function). Figure A1 summarizes the observation-based data sets and their hierarchical arrangement to compute skill scores (adapted from Fig. S3 and Table S2 in Steinacher et al., 2013).

The observational data sets combine information from satellite, ship-based, ice-core, and in-situ measurements to probe both the mean state and transient responses in space and time. The energy balance and its change over time is probed by annual mean time series of Southern and Northern Hemisphere temperature from 1850 to 2010 (Brohan et al., 2006), of upper (0-700 m) ocean heat content anomalies from 1955 to 2011 (Levitus et al., 2012), and from 1993 to 2008 (Lyman et al., 2010) and the ocean heat uptake over the period 2005 to 2010 (von Schuckmann and Le Traon, 2011). The atmospheric carbon balance is probed by the reconstructed atmospheric CO₂ history from ice cores (1850 to 1958; Etheridge et al., 1996) and direct atmospheric measurements (1959 to 2010; Keeling and Whorf, 2005; Conway and Tans, 2011) as well as global and temporal means of net carbon uptake by the land and by the ocean for the periods 1959 to 2006, 1990 to 1999, and 2000 to 2006 (Canadell et al., 2007). Oceanic processes, which are key for the uptake of both heat and carbon, are probed using gridded data from the World Ocean Atlas (Locarnini et al., 2010; Antonov et al., 2010; Garcia et al., 2010) and the Global Ocean Analysis Project (GLODAP Key et al., 2004); surface fields and whole ocean fields are considered separately for individual tracers. Ocean temperature (T) and salinity (S) fields probe the water mass distribution and T and S influences CO₂ solubility and carbonate chemistry. The transient tracer CFC-11 (distribution for 1995) and radiocarbon (preindustrial) probe the ventilation time scales and thus the surface-to-deep transport rates for carbon, heat and other tracers. The marine biological cycle is probed by comparing modeled

with observed fields of the major nutrient phosphate, as well as dissolved inorganic carbon (preindustrial) and alkalinity (1995). Temperature, salinity and phosphate fields from the World Ocean Atlas include seasonal variations in the upper ocean. Land biosphere processes are constrained by comparing modeled and observation-derived carbon stocks and fluxes. Vegetation carbon stock data include two different data sets for about 140 sites each (Luyssaert et al., 2007; Keith et al., 2009) and an estimate for the global preindustrial inventory (550 ± 200 Gt C; Prentice et al., 2001). Gridded soil carbon fields for low and mid latitudes (south of 50° N; Global Soil Data Task Group, 2000) and high latitude North America (Tarnocai et al., 2009, 2007) and an estimate for the global soil carbon content in the top 100 cm (1950 ± 550 Gt C; Batjes, 1996). Net primary productivity is probed using observation-based estimates from around 80 sites (Olson et al., 2001) and 140 sites (Luyssaert et al., 2007), and a gridded seasonal climatology of the fraction of absorbed photosynthetic active radiation (Gobron et al., 2006). Finally, we probe the seasonal cycle of the net terrestrial carbon balance by prescribing modeled net land-to-atmosphere fluxes in the TM2 transport model to compute the average seasonal cycle of atmospheric CO_2 at nine sites as monitored by the GLOBALVIEW atmospheric CO_2 network (GLOBALVIEW-CO2, 2011).

A hierarchical structuring of the data sets is applied for the computation of the skill scores. Individual data sets consist of a single number, of site data, time series, as well as gridded two- and three-dimensional fields. The number of values included in a data set ranges from one to many thousands. In addition, different data sets sometimes probe closely related quantities. It is thus necessary to implement a formalism to avoid that the data sets with the largest number of data dominate the outcome. The task is to attribute a weight to each individual data set that is appropriate in comparison with the other data sets. Here, this is done by organizing the data in a hierarchical structure for aggregating the scores of individual data sets to the total score. We consider four main data groups probing the energy balance, termed “Heat” in Fig. A1, the atmospheric carbon balance, “ CO_2 ”, ocean processes and inventories, “Ocean”, and land biosphere fluxes and stocks, “Land”. Each of these groups has the same weight for the computation of the overall skill scores. The individual data sets are further arranged in additional subgroups.

From the simulation results over the historical period (“mod”) and the set of observational constraints (“obs”), we assign a score to each ensemble member m as $S_m \propto \exp(-\frac{1}{2} \frac{\overline{(X_m^{\text{mod}} - X^{\text{obs}})^2}}{\sigma^2})$. This likelihood-type function basically corresponds to a Gaussian distribution of the data-model discrepancy ($X_m^{\text{mod}} - X^{\text{obs}}$) with zero mean and variance σ^2 . The overbar indicates that the error-weighted data-model discrepancy is first averaged over all data points of each observational variable (volume or area-weighted) and then aggregated in the hierarchical structure by averaging variables belonging to the same group. 3931 out of the 5000 ensemble members contribute less than a percent to the cumulative skill $\sum_m S_m$ of all members m and are not used any further.

The variance σ^2 represents the combined observational error and model discrepancy and needs to be specified. The model discrepancy is the inherent model error that cannot be eliminated even

with the best parameter settings and input data. While most of the observational data sets come with estimates of the observational errors, the model discrepancy is difficult to specify. Here we
315 estimate the combined observational and model error with the variance of the model-data difference for the best fitting model realisation (i.e. the model with the smallest mean squared error). In some few cases where the observational error is larger than this estimate (and thus the combined error is clearly underestimated), the observational error is taken as total error.

2.1.3 Spin-up procedure

320 The spin-up procedure for the 5000 ensemble members is tailored to keep computational costs low, while at the same time achieving small model drift after completion of the spin-up. First, a very long spin-up over more than 20,000 years is carried out with standard model parameters and preindustrial (year 1800) boundary conditions. The spin-up is then continued for all individual members from this initial steady-state to adjust the model to the perturbed parameters. In this way, the new equilibrium
325 for the perturbed parameter set is reached faster than when starting from scratch.

The adjustment spin-up is done in a sequence where not all model components are active in all steps to further decrease the computational costs. First, the physical ocean component is run stand-alone for 1500 years. Then, the atmospheric energy balance model is coupled again to the ocean and the model is run for 1000 more years. Next, the oceanic biogeochemistry module is activated
330 with initial tracer fields from the standard model configuration. The model is run for another 1000 years to allow the biogeochemical fields to adjust to the new physics. In parallel, the terrestrial component is run stand-alone for 400 years with the perturbed parameter settings, including an instantaneous adjustment of the soil carbon pools after 200 years by calculating the new pool sizes analytically from the adjusted fluxes. Finally, the fully coupled model is run for another 200 years
335 and all transient simulations are started from this state.

The reliability of the spin-up procedure is verified by performing a 500 year long control run without additional forcing and checking for unacceptable drift. Slight drifts in deep ocean tracers are accepted.

Modern peat carbon stocks are not in equilibrium with the current climate and boreal peatlands
340 still sequestered about 0.1 Gt C yr^{-1} during the last millennium (Charman et al., 2013; Yu et al., 2010). Peat carbon distribution for our transient simulations is initialized with the output from a transient simulation starting at the Last Glacial Maximum as described in Spahni et al. (2013). This initial pattern, and thus the total peat carbon inventory, is uniformly scaled with the value sampled for the parameter $C_{\text{peat, scale}}$.

345 After the spin-up, the 5000 member ensemble is run over the industrial period under prescribed CO_2 and non- CO_2 forcing. The model output is compared with the observational data and the ensemble is reduced to the 1069 simulations with the highest skill, as described in the previous section.

2.1.4 Model simulations

350 In a next step we run the constrained model ensemble for 55 greenhouse gas scenarios spanning from high business-as-usual to low mitigation pathways. The set of scenarios consists of economically feasible multi-gas emission scenarios from the integrated assessment modeling community. In addition to the four RCP scenarios (Moss et al., 2010) that were selected for the Fifth Assessment Report (AR5) of the IPCC, we included 51 scenarios from the EMF-21 (Weyant et al., 2006), GGI 355 (Grübler et al., 2007), and AME (Calvin et al., 2012) projects. For these simulations, we prescribe atmospheric CO₂ and the non-CO₂ radiative forcing derived from the emission scenarios (Fig. A2) as described in Joos et al. (2001) and Strassmann et al. (2009). We note that the AME scenarios are less complete than the others because they do not provide emission paths for aerosols and some minor greenhouse gases. We therefore make the conservative assumption of constant aerosol emissions 360 at the level of the year 2005 (-1.17 Wm^{-2}), which implies a significant cooling effect continued into the future in those 23 (out of 55) scenarios (Fig. A2f). ~~Please note~~Note that this effect does not affect our estimates of TCR, ECS and TCRE, which are based on the atmospheric CO₂-only simulations described below, nor the constraining of the model ensemble with observation-based data over the historical period. The scenarios are extended from 2100 to 2300 by stabilizing atmospheric CO₂ 365 and the non-CO₂ forcing by the year 2150 (see Steinacher et al., 2013, for details). ~~Please note~~Note that the extensions of the RCP scenarios beyond 2100 CE as used in the AR5 (Extended Concentration Pathways, ECP; Meinshausen et al., 2011) are not identical to the extensions applied here. Our extensions of RCP4.5 and RCP6 are similar to ECP4.5 and ECP6, but ECP8.5 differs significantly from our extension of RCP8.5, where atmospheric CO₂ is stabilized by 2150.

370 In addition to these multi-gas scenarios used by Steinacher et al. (2013), we run the model ensemble for an idealized “2xCO₂” scenario to determine TCR, ECS, and TCRE and an emission pulse experiment. In the 2xCO₂ simulation, atmospheric CO₂ is increased by $1 \% \text{ yr}^{-1}$ from its preindustrial level until a doubling of the concentration is reached. After that, the atmospheric CO₂ concentration is held fixed. All other forcings remain constant at preindustrial levels. The emission 375 pulse simulations are conducted as described by Joos et al. (2013). A pulse input of 100 Gt C is added to a constant background atmospheric CO₂ concentration of 389 ppm in year 2010, while all other forcings are held constant at 2010 levels. The impulse response function (IRF) is then derived from the difference between simulations with and without emission pulse. Additionally, experiments with pulse sizes of 1000, 3000, and 5000 Gt C were performed to test the sensitivity of the response to 380 the pulse size. These additional pulse experiments were run for a model configuration with median parameter settings, which is able to reproduce the median response of the ensemble for the 100 Gt C pulse (Fig. 2).

2.2 Definition of TCRE and TCPRE^X

There are slightly different definitions of the Transient Climate Response to cumulative CO₂ Emis-
 385 sions (TCRE) in the literature. Matthews et al. (2009) define it similar to the Transient Climate
 Response (TCR), i.e. as the ratio of warming to cumulative CO₂ emissions in a simulation with
 prescribed 1 % yr⁻¹ increase in atmospheric CO₂ at the time when atmospheric CO₂ reaches dou-
 ble its preindustrial concentration. In the Fifth Assessment Report (AR5) of the IPCC, ~~on the other~~
~~hand,~~ TCRE is defined more generally as the annual mean global surface temperature change per
 390 unit of cumulated CO₂ emissions in a scenario with continuing emissions (Collins et al., 2013). In
 scenarios with non-CO₂ forcings, such as the representative concentration pathways (RCPs), the
 diagnosed TCRE thus also depends on the non-CO₂ forcing. Further, the transient response should
 be distinguished from the peak response to cumulative emissions as defined in Allen et al. (2009),
 although the TCRE is nearly identical to the peak climate response to cumulative CO₂ emissions in
 395 many cases (Collins et al., 2013).

The responses, TCR and TCRE, are defined for surface air temperature in previous studies. Here,
 we extend the definition of TCRE to any climate variable $X(t)$. We define the transient response,
 TCPRE^X , and peak response, $\text{TCPRE}_{\text{peak}}^X$, per cumulative CO₂ emissions at a given time t
 as:

$$400 \quad \text{TCPRE}^X(t) = \frac{X(t)}{E(t)} \quad (1)$$

$$\text{TCPRE}_{\text{peak}}^X(t) = \frac{X(t_{\text{max}})}{E(t)} \text{ with } t_{\text{max}} : |X(t_{\text{max}})| = \max_{t' \leq t} (|X(t')|), \quad (2)$$

where $E(t)$ are the cumulative CO₂ emissions (either total or fossil-fuel only emissions; see Ap-
 pendix).

For the transient response analyses, $\text{TCPRE}^X(t) - \text{TRE}^X(t)$ is computed for every year t in the
 405 range $2000 < t \leq 2300$ (i.e. 300 data points per simulation). In contrast, the peak response is repre-
 sented by only one data point per simulation. It is the value of $X(t)$ at the time t_{max} , i.e. where the
 maximum change in the absolute value of $X(t)$ between the years 2000 and 2300 occurs, divided by
 the cumulative emissions in the year 2300, $E(t = 2300)$, and denoted $\text{TCPRE}_{\text{peak}}^X(t = 2300)$. ~~Please~~
~~note~~ $\text{TRE}_{\text{peak}}^X(t = 2300)$. ~~Note~~ that the actual peak response might occur after 2300 CE, in which
 410 case $\text{TCPRE}_{\text{peak}}^X - \text{TRE}_{\text{peak}}^X$ is only an approximation. Surface air temperature usually peaks before
 2300 CE in the applied scenarios. Steric sea level rise, on the other hand, continues to increase after
 2300 CE due to the large thermal inertia of the oceans.

TCRE is used in this study as defined by Gillett et al. (2013). Thus, TCRE is equivalent to
 $\text{TCPRE}^{\Delta\text{SAT}} - \text{TRE}^{\Delta\text{SAT}}$ derived from a simulation with prescribed 1 % yr⁻¹ atmospheric CO₂ in-
 415 crease and no other forcings.

2.3 Calculation of probability density functions

Cumulative CO₂ emissions $E_{m,s}(t)$ and climate response $X_{m,s}(t)$ are diagnosed for each model configuration $1 \leq m \leq N_m$ ($N_m = 1069$), greenhouse-gas scenario $1 \leq s \leq N_s$ ($N_s = 55$), and simulation year $2000 < t \leq 2300$. For a given model configuration m and year t we obtain 55 points in the two-dimensional (E, X) -space, representing the response under different scenarios ($E_{m,s}(t)$, $X_{m,s}(t)$). These points are considered to span the range of plausible emission-response combinations for this model configuration. Technically, we use the convex hull which is the smallest region containing all points such that, for any pair of points within the region, the straight line segment that joins the pair of points is also within the region.

By combining the convex hulls from all model configurations m in the (E, X) -space we can derive a two-dimensional probability density function (PDF), $p(E, X)$, of the plausible emission-response combinations. The model ensemble is constrained in this step by weighting the contribution of an individual model to the PDF with the model score S_m :

$$p(x, y) = \sum_m \theta_m(x, y) S_m \quad (3)$$

$$\theta_m(x, y) = \begin{cases} 1, & \text{if } (x, y) \in C(\{(E_{m,s}, X_{m,s}), s = 1, \dots, N_s\}) \\ 0, & \text{otherwise,} \end{cases} \quad (4)$$

where $C(P)$ denotes the convex hull of the set of points P . Finally, the resulting field is normalized for each emission E to obtain the relative probability map $p_{\text{rel}}(E, X)$, as shown e.g. in Fig. 3a:

$$p_{\text{rel}}(E, X) = \frac{p(E, X)}{\max_X(p(E, X))} \quad (5)$$

Alternatively, $p(x, y)$, is normalized by its integral

$$p_{\text{norm}}(E, X) = \frac{p(E, X)}{\int_{-\infty}^{\infty} p(E, X) dX}, \quad (6)$$

which then represents the PDF of the response in X for given emissions E . The probability that the change X remains smaller than a target value, X_{target} , given emission E is then in percent:

$$p_{\text{cum}}(E, X_{\text{target}}) = \int_{-\infty}^{X_{\text{target}}} p_{\text{norm}}(E, X) dX \cdot 100\% \quad (7)$$

The allowable CO₂ emissions, $E_{\text{allowable}}$, to not exceed the climate target X_{target} with a probability of 68% is then implicitly given by $p_{\text{cum}}(E, X_{\text{target}}) = 68\%$.

2.4 Testing the linearity of the response

From the probability maps in the (E, X) space, probability density functions are extracted at $E = 1000, 2000, \text{ and } 3000 \text{ Gt C}$. To compare the response at different emission levels the PDFs at 2000

and 3000 Gt C are rescaled to the response per 1000 Gt C. In a perfectly linear system we would expect that the rescaled PDFs are identical for the different emission levels. To test the linearity of the response further, we fit a linear function $\hat{X}(E) = a_{X,m} \cdot E$ to the points $(E_{m,s}(t), X_{m,s}(t))$ for each model configuration m . The linear function is forced through zero because we require $X(E=0) = 0$ at preindustrial ($t = 1800$). From the obtained coefficients $a_{X,m}$ of the model ensemble, we then calculate a PDF for the sensitivity a_X of the response to cumulative emissions under the assumption that a linear fit is reasonable. The goodness of fit is quantified by the correlation coefficients, r_m , and standard errors of the regression, $\sigma_m = \sqrt{\frac{\sum_s (X_{m,s} - \hat{X}(E_{m,s}))^2}{N_s}}$, for each model setup m . In Table 2, the ensemble median and 68 %-range of a_X , of r_m , as well as the ensemble median standard error (expressed as percentage of the median linear slope), $\hat{\sigma}$, are reported.

2.5 Selection of the climate parameters variables for analysis and computation of

455 TCPRETRE

We compute TCPRETRE^X and Impulse Response Functions (see section 3.1) for eight climate parameters variables. These are represented by the emission-driven changes in the model variables global mean surface air temperature (Δ SAT), surface ocean temperature (Δ SST), steric sea level rise (SSLR), the Atlantic Meridional Overturning Circulation (Δ AMOC), global mean surface ocean pH (Δ pH), saturation of surface waters in the Southern Ocean ($\Delta\Omega_{\text{arag,S.O.}}$; south of 50°S) and the tropics ($\Delta\Omega_{\text{arag,trop.}}$; 30°N to 30°S) with respect to calcium carbonate in the mineral form of aragonite, and global soil carbon stocks (Δ C_{soil}). These variables are deemed both impact relevant and reasonably well represented in the Bern3D-LPJ Earth System Model of Intermediate Complexity. We stress the illustrative nature of this selection. TCPRETRE^X may be computed for other climate parameters variables and regions in future work. In particular the determination of TCPRETRE^X for extreme events, such as droughts, heat waves, and floods, or for food production and fishery may be relevant for policy-makers and stakeholders.

Changes in SAT and sea level are known to impact biological and physical systems (e.g. IPCC, 2014; Sherwood and Huber, 2010). Sea level rise is expected to affect coastal ecosystems such as mangroves, to reduce coastal protection, and increase flood occurrence possibly affecting hundred millions of people living in low-lying cities and along the coast.

The uptake of CO₂ by the ocean fundamentally changes the chemical composition of ocean waters (Orr, 2011), generally referred to as “ocean acidification”. The reaction of dissolved CO₂ with H₂O to H₂CO₃ and the dissociation of the latter lead to an increase in the hydrogen ion concentration (H⁺), and a decrease in pH (pH=-log[H⁺]), and, through shifting acid-base equilibria, to a decrease in the concentration of carbonate ions, CO₃²⁻. The decrease in CO₃²⁻ is associated with a decrease in the saturation state of water with respect to calcium carbonate (CaCO₃).

Ocean acidification in conjunction with warming waters poses large risks to marine species, marine ecosystems such as corals, sea grass meadows, and marine ecosystem services such as tropical

480 fisheries (e.g. Gattuso et al., 2015; Howes et al., 2015). Warming waters affect the aerobic scope of marine organisms and constrain marine habitats (Deutsch et al., 2015; Pörtner et al., 2011). The saturation state of water with respect to aragonite and other mineral forms of calcium carbonate determines whether water is corrosive (in the absence of protective mechanisms) to shells and structures made out of calcium carbonate. Model projections reveal large and sustained changes in the saturation state of surface and deep waters for a range of emission scenarios (Orr et al., 2005; Joos et al., 2011). Waters in the Arctic Ocean, in coastal upwelling zones, and the Southern Ocean are becoming increasingly undersaturated with respect to aragonite (Steinacher et al., 2009; Gruber et al., 2012) and ongoing changes in saturation state are largest in the tropics, possibly adversely affecting net calcification rates of coral systems.

490 The AMOC contributes to the net heat transport into the North Atlantic region and changes in the AMOC may affect climate patterns in Europe and worldwide. Paleo data reveal a southward shift of the Inner Tropical Convergence Zone linked to a decrease or collapse of the AMOC with related terrestrial ecosystem impacts (e.g. Bozbiyik et al., 2011). Finally, changes in the global soil carbon inventory may be taken here as an indication of the strength of the land carbon-climate feedback ~~as well as a very rough proxy for soil fertility.~~

3 Results

3.1 Climate response to a CO₂ emission pulse: testing the linearity of the emission-response relationship

In a first step, we explore how different climatic variables respond to a pulse-like input of carbon into the atmosphere (Fig. 2) and determine the so-called Impulse Response Function (IRF) for the different climate ~~parameters~~variables. The IRF experiments provide a framework to discuss path-dependency and linearity in responses without the need to run many independent scenarios. IRFs for atmospheric CO₂, SAT, steric sea level rise (SSLR), and ocean and land carbon uptake are given elsewhere and we refer the reader to the literature for a general discussion on IRFs, underlying carbon cycle and climate processes, and time scales (e.g. Archer et al., 1998; Joos et al., 2013; Maier-Reimer and Hasselmann, 1987; Shine et al., 2005).

A main goal of this section on IRF is to discuss to which extent one may expect a close-to-linear relationship between cumulative CO₂ emissions and a climate ~~parameter~~variable of interest. A linear relationship between emissions and ~~parameter~~variable X has the advantage that the determination of ~~TCPRETRE~~ $TCPRETRE^X$ does not depend on the choice of scenario nor the magnitude of CO₂ emissions. In addition, ~~TCPRETRE~~ $TCPRETRE^X$ would, in the case of linearity, fully describe the ~~parameter~~-response to any CO₂ emissions. We start with a description of the model setup, followed by theoretical considerations, ~~then~~. Then we discuss linearity in the context of CO₂-only scenario uncertainty by analyzing median model responses, ~~then turn to~~. After that, we investigate the response uncertainty

515 by relying on the full model ensemble and compare scenario and response uncertainty. Finally, we
 briefly address the scenario uncertainty due to non-CO₂ forcing.

3.1.1 Model simulations to determine IRFs

CO₂ is added instantaneously to the model atmosphere to determine IRFs. This results in a sudden
 increase in atmospheric CO₂ and radiative forcing. Afterwards, the evolution in the perturbation of
 520 atmospheric CO₂ and in any climate variable of interest, e.g. global mean surface air temperature,
 is monitored in the model. The resulting curve is the impulse response function (Fig. 2). Here,
 1069 runs were carried out in different model configurations by adding emissions of 100 Gt C to an
 atmospheric CO₂ background concentration of 389 ppm, which corresponds to the concentration in
 the year 2010. Additionally, simulations with emission pulses of 1000, 3000 and 5000 Gt C were run
 525 for a median model configuration (Methods). For comparability, all IRFs are normalized to a carbon
 input of 100 Gt C.

3.1.2 The link between IRF and TCPRE-TRE: theoretical considerations

The motivation to analyze IRFs is two-fold. First, the dynamic of a linear (or approximately linear
 system) is fully characterized by its response to a pulse-like perturbation, i.e., the response of variable
 530 X at year t to earlier annual emissions, e , at year t' can be represented as the weighted sum of all
 earlier annual emissions. The weights are the values of the IRF curve at emission age $t - t'$:

$$X(t) = \sum_{t'} e(t') \cdot \text{IRF}(t - t'), \quad (8)$$

where the sum runs over all years t' with annual emissions up to year t . IRFs thus provide a con-
 venient and comprehensive quantitative characterization of the response of a model. IRFs form also
 535 the basis for the metrics used to compare different greenhouse gases in the Kyoto basket approach
 and to compute CO₂ equivalent concentrations (Joos et al., 2013; Myhre et al., 2013) and are used
 to build substitute models of comprehensive models (Joos et al., 1996). Second and relevant for the
TCPRE-TRE and for this study, IRFs allow us to gauge whether there is a roughly linear relationship
 between cumulative CO₂ emissions

$$540 \quad E(t) = \sum_{t'} e(t') \quad (9)$$

and the change in a climate variable of interest, $X(t)$. The transient response for variable X to
 cumulative CO₂ emissions is in this notation:

$$\text{TCPRE-TRE}^X(t) = \frac{X(t)}{E(t)} \quad (10)$$

We note that there is a close relationship between Eqs. (8) to (10) and thus between cumulative
 545 CO₂ emissions $E(t)$, response $X(t)$ and TCPRE-TRE^X. The IRF provides the link between these
 quantities.

Three conditions are to be met for a strict linear relationship between cumulative CO₂ emissions E and response X for any emission pathway: (i) the response is independent of the magnitude of the emissions, (ii) the response is independent of the age of the emission, i.e., the time passed since emissions occurred (in this case the IRF and the response $\frac{\text{TCPRE}^X}{\text{TRE}^X}$ is a constant and all emissions are weighted equally in Eq. 8), and (iii) non-CO₂ forcing factors play no role; a point that will be discussed later in section 3.1.4. While these conditions are not fully met for climate variables, they may still approximately hold for plausible emission pathways. For the range of RCP scenarios, the mean age of the CO₂ emissions varies between a few decades to hundred years for the industrial period and up to year 2100, then it increases up to 300 years until 2300 CE (Fig. 2c). More than half of the cumulative CO₂ emissions have typically an age older than 30 years (Fig. 2c). If the IRF curve is approximately flat after a few decades and independent of the pulse size, then the vast majority of emission is weighted by a similar value in Eq. (8). Consequently, the relationship between response $X(t)$ and cumulative emissions, $E(t)$ is approximately linear and path-independent. This response sensitivity per unit emission, $X(t)/E(t)$, corresponds to an “effective” (emission-weighted) mean value of the IRF and is the transient response to cumulative CO₂ emissions $\frac{\text{TCPRE}^X}{\text{TRE}^X}$. Indeed, the IRF for many variables varies within a limited range after a few decades (Fig. 2). Then, an approximately linear relationship between $E(t)$ and $X(t)$ holds and $\frac{\text{TCPRE}^X}{\text{TRE}^X}$ is approximately scenario-independent.

3.1.3 IRFs: median results

The median values of the (normalized) IRFs (Fig. 2, solid and dashed lines; Table 1) vary within a limited range over the period from 30 year to the end of the simulation (500 year) and for the different pulse sizes of 100 to 3000 GtC for global mean surface air temperature (SAT), surface ocean pH, Atlantic Meridional Overturning (AMOC), and to a somewhat lesser degree for steric sea level rise (SSLR). Consequently, we expect a close-to-linear relationship between these variables and cumulative CO₂ emissions.

For a given pulse size, the median of the IRF for the saturation with respect to aragonite in the tropical ($\Omega_{\text{arag, trop.}}$) and Southern Ocean ($\Omega_{\text{arag, S.O.}}$) surface waters and for the global soil carbon inventory varies within a limited range. However, the normalized IRFs for these variables vary substantially with the magnitude of the emission pulse. Thus, we expect a non-linear relationship between the ensemble median responses and cumulative CO₂ emissions for these quantities.

The atmospheric CO₂ perturbation declines by about a factor of two within the first 100 years for an emission pulse of 100 GtC. This means that the atmospheric CO₂ concentration at a specific time depends strongly on the emission path of the previous 100 years. In addition, the IRF differ for different pulse sizes because the efficiency of the oceanic and terrestrial carbon sinks decreases with higher atmospheric CO₂ concentrations and warming. The fraction remaining airborne after 500 years is about 75 % for a pulse input of 3000 GtC, about 2.5 times larger than the fraction

remaining for a pulse of 100 Gt C (Fig. 2a). Thus, we do not expect a scenario-independent, linear relationship between atmospheric CO₂ and cumulative emissions.

585 At first glance, it may be surprising that the responses in SAT, SSLR, AMOC, and pH do not ~~much depend~~ depend much on the size of the emission pulse given the strong sensitivity of the atmospheric CO₂ response to the pulse size. For the physical variables, this is a consequence of near-cancellation of non-linearity in the carbon cycle and in the relationship between radiative forcing and atmospheric CO₂ (Joos et al., 2013). The long-term response in atmospheric CO₂ (Fig. 2a) increases
590 with increasing emissions and the fraction remaining airborne is substantially larger for large than for small emission pulses. On the other hand, radiative forcing depends logarithmically on atmospheric CO₂ and the change in forcing per unit change in CO₂ is smaller at high than at low atmospheric CO₂ concentrations. As a consequence, the response in radiative forcing is rather insensitive to the magnitude of the emission pulse and so is the response in climate variables forced by CO₂ radiative
595 forcing. A similar effect applies for pH. Changes in dissolved [CO₂] and [H⁺] in the surface ocean closely follow changes in atmospheric CO₂ as the typical time-scale to equilibrate the ocean mixed layer with an atmospheric CO₂ perturbation is of the order of a year and because changes in [H⁺] are roughly proportional to [CO₂] (Orr, 2011). pH is by definition the (negative) logarithm of the H⁺ concentration. As for radiative forcing, non-linearities in the CO₂ and thus H⁺ response roughly
600 cancel when applying the logarithm to compute pH.

3.1.4 Response versus scenario uncertainty

The Monte-Carlo IRF experiments allow us also to assess the response or model uncertainty (Fig. 2, orange range). The 90% confidence range in the IRF are substantially larger than the variation of the (normalized) median IRF for the variables SAT, SSLR, AMOC, and soil carbon inventory.
605 Consequently, the model uncertainty will dominate the uncertainty in ~~TCPRE^X~~ TRE^X and is larger than uncertainties arising from dependencies on the carbon emission pathway. On the other hand, the response uncertainty from our 1069 Monte Carlo model setups are more comparable to the variation in the median IRFs for atmospheric CO₂, and surface water saturation with respect to aragonite in the tropical ocean and Southern Ocean.

610 In addition to the path dependency and the response uncertainty in ~~TCPRE^X~~ TRE^X discussed above, forcing from non-CO₂ agents will affect ~~TCPRE^X~~ TRE^X. We expect a notable influence of non-CO₂ agents on the physical climate variables SAT, SSLR, and AMOC. For example, Strassmann et al. (2009) attributed simulated surface warming to individual forcing components for a range of mitigation and non-mitigation scenarios. They find that non-CO₂ greenhouse gas forcing causes up
615 to 50% as much warming as CO₂ forcing and that the non-CO₂ forcing is only partly offset by aerosol cooling by 2100. On the other hand, we expect a small influence of non-CO₂ forcing on pH and saturation state which is predominantly driven by the atmospheric CO₂ perturbation (Steinacher et al., 2009; McNeil and Matear, 2007).

In summary, uncertainty in the response dominate over the uncertainty arising from path depen-
 620 dency for SAT, SSLR, AMOC, and soil carbon. For CO₂-only or CO₂-dominated scenarios, we
 expect close-to-linear relationship between cumulative CO₂ emissions and SAT, surface ocean pH,
 AMOC, and to some extent for SSLR. In other words, the concept of TCPRE^X should work
 particularly well for these parametersvariables. On the other hand, less well expressed linear behav-
 625 ior is found for global soil carbon and surface water saturation with respect to aragonite. In the next
 section, we will elaborate on these findings and quantify TCPRE^X .

3.2 The Transient Climate Parameter-Response to cumulative CO₂ Emissions

We investigate the response in multiple climate variables, $X(t)$, as a function of cumulative fos-
 sil or total CO₂ emissions $E(t)$. We used the model ensemble presented in Steinacher et al.
 (2013) for 55 multi-gas emission scenarios from the integrated assessment modeling commu-
 630 nity which range from very optimistic mitigation to high business-as-usual scenarios (Meth-
 ods). From those simulations we determine the transient response to cumulative CO₂ emissions
 $\text{TCPRE}^X(t) = X(t)/E(t)$ $\text{TRE}^X(t) = X(t)/E(t)$ (Tables 2 and A2; Figs. 3–5). In addition, we
 also present results for the peak response $\text{TCPRE}_{\text{peak}}^X(t=2300) = \max_{t'}(X(t')/E(t=2300))$
 $\text{TRE}_{\text{peak}}^X(t=2300) = \max_{t'}(X(t')/E(t=2300))$ (Tables 2 and A2, Fig. 3).

635 The discussion of results is guided by the results shown in Figs. 3 to 5. These show the relative
 probability of change in the parameter-variable X for given cumulative CO₂ emissions (e.g., colors
 in Fig. 3a) together with the linear regression slopes (black dashed lines). These graphs allow one
 to visually inspect the linearity in response to cumulative CO₂ emissions and results include both
 scenario and response uncertainty. In accompanying panels (e.g., Fig. 3b), the focus is on scenario
 640 uncertainty versus response uncertainty. The relationship between change and cumulative emissions
 is plotted for the ensemble median and for the 55 scenarios (55 colored lines). In addition, the
 68% and 90% confidence interval for the response (or model) uncertainty is given for one scenario,
 RCP8.5, by red dashed and dotted lines. These graphs allow one to infer scenario and response
 uncertainty individually.

645 $\text{TCPRE}^{\Delta\text{SAT}}$: We find a largely linear relationship between cumulative CO₂ emissions and
 both transient and peak warming (Fig. 3a and c) for the set of emission scenarios considered here.
 These linear relationships confirm the finding from the pulse experiment above, i.e. that the response
 in the global SAT change is largely independent from the pathway of CO₂ emissions in our model.
 We note, however, that some low-end scenarios show a non-linear behavior due to non-CO₂ forcing
 650 (Fig. 3b). Some AME scenarios show a decrease in temperature due to a strong reduction in the
 non-CO₂ forcing while cumulative emissions continue to increase slightly. Other scenarios (mostly
 from GGI) deviate from the linear relationship when negative emissions decrease the cumulative
 emissions while the increased temperature is largely sustained. These non-linearities are evident as
 large changes in the slope between SAT and cumulative emissions towards the end of the individual

655 simulations, that is after ≈ 2150 CE when atmospheric CO_2 is stabilized and emissions are low
(Fig. 3b). Yet those deviations are not large enough to eliminate the generally linear relationship
found for this set of scenarios.

The projected warming for a given amount of CO_2 emissions is associated with a considerable
uncertainty which increases with higher cumulative emissions. This uncertainty arises from both,
660 the response uncertainty of the model ensemble such as the uncertain climate sensitivity or oceanic
carbon uptake, as well as from the scenario uncertainty. The scenario uncertainty is mainly due
to different assumptions for the non- CO_2 forcing in the scenarios. The AME scenarios, for exam-
ple, assume a relatively strong negative forcing from aerosols which leads to a consistently smaller
warming than in the other scenarios (Fig. 3b). The response and scenario uncertainty appear to be of
665 the same order of magnitude (Fig. 3b).

The median transient response is $2.0^\circ\text{C} (\text{Tt C})^{-1}$ ($1.1\text{--}3.4^\circ\text{C} (\text{Tt C})^{-1}$ 68 % confidence inter-
val) evaluated at 1000 GtC total emissions and similar for 2000 and 3000 GtC. The median peak
warming response is slightly larger. It is $2.3^\circ\text{C} (\text{Tt C})^{-1}$ ($1.5\text{--}3.8^\circ\text{C} (\text{Tt C})^{-1}$ 68 % confidence
interval) for scenarios with 1000 GtC total emissions and decreases slightly to $1.9^\circ\text{C} (\text{Tt C})^{-1}$
670 ($1.3\text{--}2.7^\circ\text{C} (\text{Tt C})^{-1}$ 68 % c.i.) for scenarios with 3000 GtC total emissions (Fig. 3d; Table 2).
The corresponding responses to fossil-fuel emissions only are accordingly somewhat higher, e.g.
 $2.2^\circ\text{C} (\text{Tt C})^{-1}$ ($1.3\text{--}3.8^\circ\text{C} (\text{Tt C})^{-1}$) for the transient response evaluated at 1000 GtC fossil emis-
sions (Fig. A3, Table A2).

We fitted a linear function through zero to the results of each ensemble member and then
675 calculated the probability density functions from the individual slopes. The median slope is
 $1.8^\circ\text{C} (\text{Tt C})^{-1}$ ($1.1\text{--}2.6^\circ\text{C} (\text{Tt C})^{-1}$) for the peak response and values are similar for the tran-
sient response (Table 2). These slopes are somewhat lower than the direct results but in general the
linear regression approach is able to reproduce the distribution of the peak and transient warming
response per 1000 GtC CO_2 emissions, although the confidence interval is narrower and the long
680 tail of the distribution might be underestimated.

TCRE: Following Matthews et al. (2009) and Gillett et al. (2013), we also determined the TCRE
for our model ensemble from scenario where atmospheric CO_2 is increasing by $1\% \text{ yr}^{-1}$ until twice
the preindustrial concentration is reached. No other forcing agents are included. Correspondingly,
we find a slightly lower median TCRE of $1.7^\circ\text{C} (\text{Tt C})^{-1}$ ($1.3\text{--}2.3^\circ\text{C} (\text{Tt C})^{-1}$ 68 % c.i.; 1.0--
685 $2.7^\circ\text{C} (\text{Tt C})^{-1}$ 5–95 % c.i.) than for the SAT response in the multi-agent scenarios. The 68 % c.i.
includes the scenario uncertainty range in TCRE (1.5 to 2.0°C) obtained by Herrington and Zickfeld
(2014) with a single model setup and for a range of CO_2 -only scenarios (with constant future non-
 CO_2 forcing). Gillett et al. (2013) report a TCRE of $0.8\text{--}2.4^\circ\text{C} (\text{Tt C})^{-1}$ (5–95 % range) from 15
models of the Coupled Model Intercomparison Project (CMIP5) for a $2\times\text{CO}_2$ scenario and a range of
690 $0.7\text{--}2.0^\circ\text{C} (\text{Tt C})^{-1}$ estimated from observations. [In IPCC AR5, TCRE is estimated to be likely in
the range of \$0.8^\circ\text{C}\$ to \$2.5^\circ\text{C}\$ for cumulative emissions up to about 2000 GtC \(IPCC, 2013\).](#) Those

ranges are somewhat lower than our 5–95 % ranges of $0.9\text{--}3.1\text{ }^{\circ}\text{C}(\text{Tt C})^{-1}$ obtained by linear regression from the scenarios that include non- CO_2 forcing and $1.0\text{--}2.7\text{ }^{\circ}\text{C}(\text{Tt C})^{-1}$ from the $2\times\text{CO}_2$ simulations.

695 TCPRETRE $^{\Delta\text{SST}}$: The transient response in sea surface temperature (SST) shows the same characteristics as the response in SAT (Fig. 3e,f). The response is $1.5\text{ }^{\circ}\text{C}(\text{Tt C})^{-1}$ ($0.9\text{--}2.5\text{ }^{\circ}\text{C}(\text{Tt C})^{-1}$ 68 % c.i.) evaluated at 1000 GtC total emissions, and $1.3\text{ }^{\circ}\text{C}(\text{Tt C})^{-1}$ ($0.9\text{--}1.8\text{ }^{\circ}\text{C}(\text{Tt C})^{-1}$) for the linear regression approach.

700 TCPRETRE $^{\text{SSLR}}$ and TCPRETRE $^{\Delta\text{AMOC}}$: Compared to global mean warming, the responses in steric sea level rise (SSLR) and in the strength of the Atlantic meridional overturning circulation (AMOC) are more emission-path dependent (Fig. 4b,d). In all scenarios applied here, it is assumed that atmospheric CO_2 and total radiative forcing is stabilized after 2150. This yields a slow additional growth in cumulative emissions after 2150, whereas SSLR continues largely unabated and the AMOC continues to recover. This results in a steep slope in the relationship between cumulative CO_2 emissions and these variables after 2150 as well visible in Fig. 4b. The path-dependency 705 also results in larger differences between transient and peak responses (Table 2). The projected peak SSLR is described remarkably well by a linear regression (Table 2). Yet, these results for the peak SSLR response are somewhat fortuitous and influenced by our choice to stabilize atmospheric CO_2 and forcings after 2150 in all scenarios and by the stop of simulations in year 2300. We emphasize 710 that SSLR would continue to increase beyond the end of the simulation and TCPRETRE $^{\text{SSLR}}$ are thus only indicative for the period from today to year 2300.

For AMOC, the response is somewhat stronger for low-emission than high-emission paths (Fig. 4d). For 1000 GtC total emissions, we find a peak reduction in AMOC of -24% (-35 to -15%) (Table 2). This sensitivity is larger than found by Herrington and Zickfeld (2014), but simulated changes in AMOC are known to be model dependent. 715

TCPRETRE $^{\text{pH}}$ and TCPRETRE $^{\Delta\Omega_{\text{avg,S.O.}}}$ and TCPRETRE $^{\Delta\Omega_{\text{avg,tropics}}}$: Surface ΔpH shows a very tight and linear relationship with cumulative CO_2 emissions (Fig. 4e,f). This is consistent with a small influence of non- CO_2 forcing agents, a small response uncertainty and a relatively small dependency on the CO_2 emission pathway as revealed by the IRF experiments. Both scenario and response uncertainty are smaller than for other variables. pH decreases by about 0.2 unit per 1000 GtC 720 emissions from fossil sources.

For Ω_{arag} , the non-linearities are more pronounced than for the physical variables and pH with a proportionally stronger response at low total emissions ($\Delta\Omega_{\text{arag}} = -0.68$ to $-0.54(\text{Tt C})^{-1}$ at 1000 GtC total emissions) and weaker response at higher total emissions ($\Delta\Omega_{\text{arag}} = -0.43$ to $-0.35(1000\text{ Gt C})^{-1}$ at 3000 GtC total emissions, Fig. 5b and d). Again, results for fossil-fuel emissions only are provided in Fig. A3 and Table A2. 725

TCPRETRE $^{\Delta c_{\text{soil}}}$: Finally, the change in global soil carbon (Fig. 5e,f) shows a similar response as SSLR, with continued carbon release from soils after stabilization of greenhouse gas concentrations

in mid to high emission scenarios. Like the ocean heat uptake, the respiration of soil carbon can be slow, particularly in deep soil layers at high latitudes, and it takes some time to reach a new equilibrium at a higher temperature. The response uncertainty represented by the model spread for a given scenario, however, is even larger than the spread from the scenarios. For the same scenario, the 90 % confidence interval ranges from a very high loss of up to 40 % to increases in global soil carbon by a few percent (Fig. 5f).

In summary, we find that not only global mean surface air temperature, but also the other target variables investigated here show a monotonic relationship with cumulative CO₂ emissions in multi-gas scenarios. The relationship with cumulative CO₂ emission is highly linear for pH as evidenced by the high correlation coefficient and the invariance in the ensemble median and confidence range from total emissions (Table 2). Changes in steric sea level, meridional overturning circulation, and aragonite saturation are generally less linearly related to cumulative emissions than global pH and surface air temperature. These variables show a substantial non-linear response after stabilization of atmospheric CO₂. Nevertheless, the PDF of the peak response for all these variables can be reproduced relatively well with a linear regression yielding correlations of $r = 0.8\text{--}0.98$ and standard errors of $\hat{\sigma} = 30\text{--}40\%$ (Table 2).

3.3 Transient and equilibrium climate sensitivity

TCR is estimated from the ensemble simulations with 1 % yr⁻¹ increase until doubling of atmospheric CO₂ and in combination with the observational constraints (Methods). TCR is constrained to a median value of 1.7 °C with 68 and 90 % c.i. of 1.3–2.2 °C and 1.1–2.6 °C, respectively. The 68 % range is somewhat narrower than the corresponding IPCC AR5 range of 1.0–2.5 °C, (Collins et al., 2013). The CMIP5 model mean and 90 % uncertainty range of 1.8 and 1.2–2.4 °C (Flato et al., 2013) are fully consistent with our observation-constrained estimates.

ECS is estimated by extending the 2xCO₂ simulations by 1500 yrs (at constant radiative forcing) and fitting a sum of exponentials to the resulting temperature response. Median ECS is 2.9 °C with constrained 68 and 90 % c.i. of 2.0–4.2 °C and 1.5–6.0 °C. Again, the CMIP5 model mean and 90 % range of 3.2 and 1.9–4.5 °C are well within our observation-constrained estimates. However, our 68 % confidence interval is narrower than the IPCC AR5 estimate of 1.5–4.5 °C, particularly on the low end.

3.3.1 Influence of individual observational data on the probability distribution

~~26~~ Twenty-six different observational data sets are applied to constrain carbon cycle and physical climate responses. This raises the question to which extent an individual data set or a group of data sets constrain the model responses and whether some data sets may unintentionally deteriorate estimates. Uncertainties in the carbon cycle are irrelevant for the physical metrics TCR and ECS.

Correspondingly, data sets aimed to constrain the carbon cycle response, e.g. land carbon inventory data, should not affect estimates of TCR and ECS.

765 The effect of the different observational constraints on the constrained, posterior distribution for TCR and ECS is estimated by applying only subsets of the observational data. First, the subsets of constraints is given the full weight as if they were the only available data (Fig. 6a and c). As expected, the data groups “land” and “ocean”, targeted towards carbon cycle responses, do not influence the outcomes for TCR and ECS. The subgroups “heat” (SAT and ocean heat uptake records) and “CO₂”
770 both constrain TCR and ECS and shift the prior PDF towards the fully constrained PDF when applied alone (Fig. 6a and c). The SAT record tends to constrain TCR and ECS to slightly higher values and the ocean heat uptake data to slightly lower values than the full constraint.

Interestingly, also the “CO₂” subgroup narrows the probability distribution for TCR and ECS, although less than the SAT and ocean heat records. The “CO₂” subgroup includes data sets of the
775 atmospheric CO₂ increase over the industrial period and observation-based estimates of the ocean and land carbon uptake for recent periods. Ocean carbon and heat uptake are governed by similar processes, namely the surface-to-deep transport of excess carbon and heat from the surface to the deep ocean. Apparently, model members that are not able to describe the ocean carbon uptake and the evolution in atmospheric CO₂ reasonably well, fail also to match observational records for SAT and
780 ocean heat content. The PDF for the “CO₂” subgroup displays several maxima for ECS and similar for TCR. We are not in a position to provide a firm explanation for these maxima, but speculate that this result may be related to the limited number of members in our ensemble and that the multi-dimensional model parameter space is not completely sampled.

Second, the subsets of constraints are added successively (Fig. 6b and d). Unlike above, weights
785 associated to each subgroup are now set to correspond to the weights they will have in the fully constrained set (i.e. after adding all the subsets). ~~Please note~~ Note that the fully constrained posterior distribution does not depend on the order of applying the individual constraints. When applied sequentially with their corresponding weights in the full constraint, ocean heat uptake represents the strongest constraint. In contrast, the SAT record changes the prior PDF only slightly (dashed magenta
790 line in Fig. 6b and d) when applied with its corresponding weight in the full constraint. Similarly, adding the group “CO₂” after the ocean heat uptake data shifts the PDF only slightly (solid magenta vs. cyan line in Fig. 6b and d). This suggests that the CO₂ data does not add substantial information with respect to TCR and ECS that is not already captured by the temperature data. In summary, the subgroup “heat” represents the strongest constraints for TCR and ECS. In particular the ocean heat
795 uptake data is important for constraining these metrics and exerts the dominant influence on the final PDFs.

4 Discussion

We have quantified the Transient ~~Climate-Parameter~~ Response to cumulative CO₂ Emissions, TCPRE TRE^X , for multiple Earth system variables, the responses to a CO₂ emission pulse defining the Impulse Response Function (IRF), and three other important climate metrics, the Equilibrium Climate Sensitivity (ECS), the Transient Climate Response (TCR), and the the Transient Climate Response to cumulative CO₂ Emissions (TCRE). TCPRE TRE^X and IRF are evaluated for global and regional changes in physical and biogeochemical ~~parameters~~variables. The linearity and path-dependency in responses and scenario uncertainties as well as model response uncertainties are
800 quantified. Our probabilistic results are derived with an observationally constrained ~1000-member ensemble of the Bern3D-LPJ model and for 55 different greenhouse gas scenarios and additional idealized simulations.

A caveat is that we apply a cost-efficient Earth System Model of Intermediate Complexity with limitations in spatial and temporal model resolution and mechanistic representation of important
810 climate processes. However and in contrast to reduced-form, box-type, two-dimensional, linear response models, expert assumptions, or component models applied in many earlier probabilistic assessments (e.g. Wigley and Raper, 2001; Knutti et al., 2002, 2003, 2005; Schleussner et al., 2014; Bodman et al., 2013; Little et al., 2013; Harris et al., 2013; Holden et al., 2013; Bhat et al., 2012), the Bern3D-LPJ features a dynamic three-dimensional ocean with physically consistent formulations for the transport of heat, carbon, and other biogeochemical tracers, similar to work by Holden
815 et al. (2010) and Olson et al. (2012), and includes a state-of-the-art dynamic global vegetation model, peat carbon, and anthropogenic land use dynamics. The model is applied directly without using an emulator (Holden et al., 2010; Olson et al., 2012; Holden et al., 2015). Further, we note that no ocean carbonate chemistry or marine biology parameters were varied in this study. Results for changes in
820 Atlantic Meridional Overturning (AMOC) are known to vary considerably among different models and our ensemble may not represent the full uncertainty in AMOC response. Important processes are not represented in Bern3D-LPJ. Most notably, the melting of ice sheets and glacier and its impacts on sea level and AMOC are not included. Consequently, only results for the steric component of sea level rise are reported and results for changes in AMOC should be considered with caution. Potential
825 climatic "surprises" such as the massive release of methane from clathrates or permafrost are also not considered.

4.1 TCPRE TRE^X : The emission-response relationship

A main focus of this study is on TCPRE TRE^X and thus on the probabilistic relationship between cumulative CO₂ emissions and the transient or peak response in individual, illustrative climate
830 ~~parameters~~variables. TRE^X was evaluated both by using the response and emission data for each year of a simulation and in the case of $\text{TCPRE TRE}_{\text{peak}}^X$ by considering only the peak (or

maximum) in response over a transient simulation. For simplicity, the term TCPRETRE^X is often used to refer to both quantities in the following discussion. In this study, probability distributions are always determined for the climate parameter-variable response for a fixed, given amount of emissions. For example, for 1000 Gt C of total emissions, the peak response in global mean surface temperature change (ΔSAT) is determined to 2.31 °C and to be with a probability of 68 % within 1.49 and 3.81 °C (Table 2).

The magnitude of the response is in general non-linearly related to cumulative CO₂ emissions. This may present no fundamental problem. Yet, non-linearity in responses add to the scenario uncertainty and extrapolation beyond the considered scenario space may not provide reliable results. Non-linear relationships cannot be precisely summarized with one single number. For convenience, we have approximated responses for the investigated variables by linear fits (Tables 2 and A2). A close to linear relationship is found for pH. Consistent with earlier studies, we also find an approximately linear relation between transient surface temperature increase and cumulative CO₂ emissions of about 1–3 °C (Tt C)⁻¹ over our set of multi-agent scenarios. There are some non-linear temperature responses in strong mitigation scenarios (particularly those with negative emissions).

Within Bern3D-LPJ, $\text{TCPRETRE}^{\Delta\text{SAT}}$ is higher when evaluated at 1000 Gt C than when evaluated at 2000 or 3000 Gt C (see Table 2). This may be related to non-CO₂ forcing as it has potentially a relatively smaller role in high-emission scenarios. It may also be model specific as similar tendencies are found not only for the other physical parameters-variables, but also the ocean acidification parameters-variables which are hardly influenced by non-CO₂ forcing. A tendency for the TCRE to decrease with increasing cumulative emissions is noted in earlier studies (Herrington and Zickfeld, 2014; Gillett et al., 2013; Matthews et al., 2009), while Krasting et al. (2014) find TCRE to be large for low and high emission rates and low for modern emission rates in idealized scenarios in the GFDL model.

4.2 Climate targets, allowable emissions and TCPRETRE^X

Next we address climate targets and allowable emissions, widely discussed in the literature for global mean surface temperature (e.g. Siegenthaler and Oeschger, 1978; Friedlingstein et al., 2011; Rogelj et al., 2011; Peters et al., 2013). The link between a climate target, e.g., the 2 °C target, and allowable emissions is closely related to TCPRETRE^X and $\text{TCPRETRE}_{\text{peak}}^X$. The probabilistic, quantitative relationship between a climate variable of choice and cumulative CO₂ emissions permits one to assess the ceiling in cumulative CO₂ emissions if a specific individual limit is not to be exceeded with a given probability, P . This quantification of allowable emissions is possible irrespective of whether the emission-parameter-response-emission-response relationship is linear or not. Estimates of allowable emissions may be inferred from the full model ensemble results or approximated graphically

from the Figs. 3 to 5. Even simpler, $\text{TCPRETRE}^X(P)$ (or $\text{TCPRETRE}_{\text{peak}}^X(P)$) is a convenient measure to link a given climate target with allowable fossil fuel CO₂ emissions, $E_{\text{allowable}}$. It holds:

$$E_{\text{allowable}} = \frac{X_{\text{target}}(P)}{\text{TCPRETRE}^X(P)} \frac{X_{\text{target}}(P)}{\text{TRE}^X(P)} \text{ trillion-ton-carbon,} \quad (11)$$

where $X_{\text{target}}(P)$ is a limit in parameter-variable X not to be exceeded with probability P .

870 $\text{TCPRETRE}^X(P)$ is then the numerical value determined from the probability distribution (e.g. Fig. 3d) of TCPRETRE^X for a given cumulative probability P (or $(1 - P)$). In case of an approximately linear emission-response relationship, a single value of $\text{TCPRETRE}^X(P)$ applies for different target levels. For example, $\text{TCPRETRE}_{\text{peak}}^{\Delta\text{SAT}}$ is 2.85 °C per trillion ton-C and at the 68 % percentile (evaluated for total emissions of 1000 Gt C). Then, allowable total carbon emissions to
 875 keep global mean surface temperature warming below 2 °C at any time with a 68 % probability is are estimated to 702 Gt C ($2/2.85 \cdot$ trillion ton-C). Correspondingly, allowable total carbon emissions to meet the 1.5 °C target mentioned in the Paris agreement (United Nations, 2015) are 526 Gt C.

Numerical values of TCPRETRE^X vary with the magnitude of emissions (Tables 2 and A2) as mentioned above. Cumulative fossil and land use emissions up to year 2100 are typically lower than
 880 1500 Gt C for the mitigation scenarios of the Energy Modeling Forum Project 21 (Van Vuuren et al., 2008). Thus, in the context of emission mitigation, the numerical values (median and confidence interval) determined at 1000 Gt C cumulative fossil fuel emissions appear best suited (Tables 2 and A2). For convenience, we provide the inverse values of TCPRETRE^X and $\text{TCPRETRE}_{\text{peak}}^X$ for the different climate parameters-variables for the 68 % and 90 % percentiles of the cumulative, inte-
 885 grated probability distribution in table ??3. Multiplying the appropriate value with the climate target of choice yields the allowable emissions to meet this target with 68 % and 90 % probability, respectively.

Some aspects are not explicitly considered here. First, meeting a set of multiple targets requires lower cumulative CO₂ emissions than required to meet the most stringent target within the set in
 890 probabilistic assessments (Steinacher et al., 2013). Thus, the evaluation of allowable cumulative emissions to meet multiple climate targets requires their joint evaluation. In practical terms, the joint evaluation of the 2 °C target and the Southern Ocean saturation target would yield lower allowable emissions than indicated in the above paragraph.

Second, inertia in the socio-economic system limits the rate of carbon emission reduction. In other
 895 words, carbon emissions are committed for the future through existing infrastructure. The committed peak change in a climate parameter-variable X (relative to preindustrial) under a limited, constant rate of emission reduction s is easily evaluated using the tabulated values of TCPRETRE^X (Allen and Stocker, 2014):

$$X_{\text{peak}} = \text{TCPRETRE}^X \left(\frac{e(t)}{s} + E(t) \right) \quad (12)$$

900 Here, $e(t)$ denotes the CO₂ emissions at time t , e.g., today, $e(t)/s$ is the cumulative sum of future emissions (given exponentially decreasing emissions with rate s), and $E(t)$ the cumulative emissions over the historical period up to time t . Economically feasible emission reduction rates are considered to be in the range of a few percent. In 2015, total CO₂ emissions are about 10 GtC per year and realized emissions from fossil fuel burning, land use, and cement production are about
905 600 GtC. This yields a committed (median) change in SAT of 2.5 (2.31 °C per trillion ton-C × (10/0.02+600) GtC) and 1.8 °C when assuming immediate emission reduction with a rate of 2% and 5% , respectively. The corresponding commitments in pH decrease are 0.22 and 0.16.

Climate targets may become out of reach when the transition to a decarbonized economy is delayed. This is quantitatively illustrated by the Mitigation Delay Sensitivity (MDS; Stocker, 2013;
910 Pfister and Stocker, submitted), a metric that captures the additional, committed increase in a climate parameter-variable due to a delay in emission reduction. Again, the values of TCPRETR^X given in Tables 2 and A2 allow one to compute the median and the 68% confidence interval for the MDS following Allen and Stocker (2014).

4.3 Impulse Response Functions

915 The response to a pulse-like input of carbon into the atmosphere for atmospheric CO₂, ocean and land carbon, surface air temperature, and steric sea level rise are discussed elsewhere (e.g. Archer et al., 1998; Frölicher et al., 2014; Joos et al., 2013; Shine et al., 2005). Here we provide in addition impulse response functions for surface ocean pH and calcium carbonate saturation states, and soil carbon. A substantial fraction of carbon emitted today will remain airborne for centuries and mil-
920 lennia. The impact of today’s carbon emissions on surface air temperature will accrue within about 20 years only, but persists for many centuries. In the Bern3D-LPJ as in many other models, surface air temperature remains approximately constant after the first ~20 years after the pulse input. As found in earlier studies, the normalized IRF in SAT depends relatively weakly on the magnitude of the emission pulse. However, the peak warming is realized later for larger than for smaller emission
925 pulses in the Bern3D and in a range of other models (Joos et al., 2013; Zickfeld and Herrington, 2015). Interestingly, Frölicher et al. (2014) find that surface air temperature increases for several centuries in their CO₂ pulse experiment with the GFDL model. Steric sea level rise accrues slowly on multi-decadal to century time scales. Similar as for atmospheric CO₂, peak impacts in surface ocean pH and saturation states occur almost immediately after emissions and these changes will
930 persist for centuries and millennia. Thus, the environment and the socio-economic system will experience the impact of our current carbon emissions more or less immediately and these impacts are irreversible on human time scales.

4.4 Transient and Equilibrium Climate Sensitivity

Another focus of this study is to provide observation-constrained estimates of the Transient Climate
935 Response (TCR), the Equilibrium Climate Sensitivity (ECS), and the Transient Climate Response
to cumulative CO₂ Emissions (TCRE) as determined from CO₂-only scenarios. The recent slow-
down in global surface air-temperature warming (Hartmann et al., 2013; Roberts et al., 2015; Nieves
et al., 2015; Karl et al., 2015; Marotzke and Forster, 2015), termed hiatus, has provoked discussions
whether climate models react too sensitive to radiative forcing. Here, the observation-constrained
940 TCR and ECS are quantified to 1.7 and 2.9 °C (ensemble mean) with 68 % uncertainty ranges of 1.3
to 2.2 and 2.0 to 4.2 °C, respectively. TCRE is estimated to 1.7 °C (Tt C)⁻¹. Our results for ECS,
TCR, and TCRE are consistent with the CMIP5 estimates in terms of multi-model mean and un-
certainty ranges (Flato et al., 2013) and there is no apparent discrepancies between our observation-
constrained TCR and CMIP5 models. On the other hand, our results do not confirm some recent
945 studies (Otto et al., 2013; Schwartz, 2012; Collins et al., 2013) that suggest the possibility of a TCR
below 1 °C. Such low values for TCR are outside the very likely range given in the Fourth Assess-
ment Report of IPCC (discussed by Collins et al., 2013) and of this study.

The choice and record length of observational constraints may bias results for TCR and ECS.
In particular, internal climate variability, e.g., associated with the Atlantic Multi-decadal Oscilla-
950 tion, may obscure the link between anthropogenic forcing and response (van der Werf and Dolman,
2014). Ocean heat content data provide the strongest constraint on ECS and TCR in our analysis.
The influence of the applied long-term hemispheric surface air temperature (SAT) records is smaller.
This is not surprising as ocean heat content represents the time-integrated anthropogenic forcing
signal both in the observations and in our model. Roemmich et al. (2015) analyzed a large set of
955 ocean temperature measurements from floats covering the top 2000 m of the water column and con-
cluded that ocean heat uptake continues steadily and unabated over the recent period 2006 and 2013.
The significant variability in surface temperature and upper 100 m heat content was offset by op-
posing variability from 100–500 m. The high variability of the SAT and SST records as evidenced
by the hiatus serves to emphasize that these records are poor indicator of the steadier subsurface-
960 ocean and climate warming signal on the decadal timescale. These findings appear to support our
approach where ocean heat data provide the strongest constraint on TCR and ECS, complemented by
hemispheric century-scale (1850 to 2010) SAT records. Studies that rely on decadal-scale SAT (or
SST) changes as included in the most recent assessment by the Intergovernmental Panel on Climate
Change (IPCC) may be affected by large and unavoidable uncertainties due to the chaotic nature
965 of natural, internal variability (van der Werf and Dolman, 2014). These findings suggest that the
downward revision of the ECS range from the IPCC Assessment Report Four to Report Five may, in
hindsight, appear perhaps somewhat cautious and that the AR4 range may be more reliable.

5 Summary and conclusions

We have quantified the Transient ~~Climate-Parameter~~ Response to cumulative CO₂ Emissions, ~~TCPRETRE~~^X, for multiple Earth system variables, the responses to a CO₂ emission pulse defining the Impulse Response Function (IRF), and three other important climate metrics, the Equilibrium Climate Sensitivity (ECS), the Transient Climate Response (TCR), and the Transient Climate Response to cumulative CO₂ Emissions (TCRE). Our results are based on (i) a large number of simulations carried out in a probabilistic framework for the industrial period and for the future using 55 different greenhouse gas scenarios, different emission pulses, and a ~~an~~ ~1000-member model ensemble and (ii) a diverse and large set of observational data as constraints. The observation-constrained probability density functions provide both best estimates and uncertainties ranges for risk analyses and for determining allowable emissions to meet a climate target.

The 68% confidence intervals for TCR and ECS are constrained to 1.3 to 2.2 °C and 2.0 to 4.2 °C, respectively. This is fully consistent with the range found by the CMIP5 models, but in conflict with suggestions of the possibility of a TCR below 1 °C. Ocean heat content data provide the most stringent constraint on these estimates, while observation-based records of surface air temperature and of the atmospheric CO₂ budget are of secondary importance in our analysis.

~~TCPRETRE~~^X and IRF are evaluated for changes in physical variables including surface air and ocean temperature, sea level, and Atlantic Meridional Overturning Circulation and changes in ocean acidification ~~parameters-variables~~ and terrestrial soil carbon stocks. Path-dependency in responses and scenario uncertainties as well as model response uncertainties are quantified.

The IRF analysis provides a theoretical framework to discuss path-dependency and linearity in response without the need to run many independent scenarios. It reveals that a perfect linearity between cumulative CO₂ emissions and Earth system variables is not to be expected. Nevertheless, the median values of the (normalized) IRFs vary within a limited range for an emission age range between 30 and 500 years and for pulse sizes between 100 and 3000 Gt C for global mean surface air temperature, surface ocean pH, Atlantic Meridional Overturning (AMOC), and to a somewhat lesser degree for steric sea level rise (SSLR). This implies a close-to-linear relationship between these variables and cumulative CO₂ emissions and relatively little influence of the CO₂-emission scenario-choice for these variables. On the other hand, the IRFs for atmospheric CO₂, global soil carbon inventory and aragonite saturation in the tropics and Southern Ocean show to vary with the size of the emission pulse, implying some non-linearity in the emission-response relationship.

~~TCPRETRE~~^X provides a convenient metric to characterize (i) responses of different climate ~~parameters-variables~~ to CO₂ emissions and (ii) to estimate the link between an individual climate target and allowable emissions. A close to linear relationship between cumulative CO₂ emissions and modeled change is found for the Earth System ~~parameters-variables~~ investigated here and when considering both scenario and response uncertainty and total emissions of up to 3000 Gt C. These findings suggests that the emission-response and emission-climate target relationships described

1005 by [TCPRE^{TRE}_X](#) should be further evaluated and quantified for additional impact-relevant climate
[parameters-variables](#) and using the full Earth System Model hierarchy.

Appendix A: Total versus fossil-fuel only CO₂ emissions

Many studies report TCRE with respect to “cumulative total anthropogenic CO₂ emissions” (e.g. IPCC, 2013; Allen et al., 2009; Meinshausen et al., 2009), not distinguishing between fossil-fuel
1010 emissions and emissions from land-use changes. Here, we use a model that explicitly simulates
terrestrial carbon fluxes, including those from land-use changes. Thus the diagnosed CO₂ emissions
obtained by closing the global carbon budget to match the prescribed atmospheric concentration in
the scenarios correspond to fossil-fuel emissions only. In order to estimate total emissions in our
simulations, direct land-use emissions (i.e. carbon from vegetation that is removed due to land-use
1015 changes) are instantaneously added to the diagnosed fossil-fuel emissions. The delayed emission of
carbon from deforestation via product and litter pools as well as indirect land-use change effects
such as the losses of terrestrial sink capacity (Strassmann et al., 2008) or from the abandonment
of land-use areas are simulated by the model, but they are not included in the estimate of total
carbon emissions because this would require additional simulations. Shifting cultivation (Stocker
1020 et al., 2014) has not been considered in this study. Results in the present study are mostly given as
a function of total (fossil-fuel plus deforestation) and, where indicated, additionally as a function of
fossil-fuel emissions. Results for fossil-fuel emissions only are provided in the appendix (Fig. A3
and Table A2).

Acknowledgements. This study was funded by the Swiss National Science Foundation and the European Project
1025 CARBOCHANGE (264879) which received funding from the European Commission’s Seventh Framework
Programme (FP7/20072013). [We also acknowledge the support from the International Space Science Institute \(ISSI\). This publication is an outcome of the ISSI’s Working Group on "Carbon Cycle Data Assimilation: How to consistently assimilate multiple data streams".](#)

References

- 1030 Allen, M. R., D. J. Frame, C. Huntingford, C. D. Jones, J. A. Lowe, M. Meinshausen, and N. Meinshausen, 2009: Warming caused by cumulative carbon emissions towards the trillionth tonne. *Nature*, **458 (7242)**, 1163–1166, doi:10.1038/nature08019.
- Allen, M. R. and T. F. Stocker, 2014: Impact of delay in reducing carbon dioxide emissions. *Nat. Clim. Ch.*, **4 (1)**, 23–26, doi:10.1038/nclimate2077, <http://dx.doi.org/10.1038/nclimate2077>.
- 1035 Antonov, J. I., et al., 2010: World ocean atlas 2009, volume 2: Salinity. NOAA Atlas NESDIS 69, U.S. Government Printing Office, 184 pp pp., Washington, D.C.
- Archer, D., H. Kheshgi, and E. Maier-Reimer, 1998: Dynamics of fossil fuel CO₂ neutralization by marine CaCO₃. *Global Biogeochem. Cy.*, **12 (2)**, 259–276, doi:10.1029/98GB00744.
- Bartelink, H. H., 1998: A model of dry matter partitioning in trees. *Tree Physiol.*, **18 (2)**, 91–101.
- 1040 Batjes, N. H., 1996: Total carbon and nitrogen in the soils of the world. *Eur. J. Soil Sci.*, **47 (2)**, 151–163, doi:10.1111/j.1365-2389.1996.tb01386.x.
- Bhat, K. S., M. Haran, R. Olson, and K. Keller, 2012: Inferring likelihoods and climate system characteristics from climate models and multiple tracers. *Environmetrics*, **23 (4)**, 345–362, doi:10.1002/env.2149.
- Bodman, R. W., P. J. Rayner, and D. J. Karoly, 2013: Uncertainty in temperature projections reduced using carbon cycle and climate observations. *Nat. Clim. Ch.*, **3 (8)**, 725–729, doi:10.1038/NCLIMATE1903.
- 1045 Bozbiyik, A., M. Steinacher, F. Joos, T. F. Stocker, and L. Menviel, 2011: Fingerprints of changes in the terrestrial carbon cycle in response to large reorganizations in ocean circulation. *Clim. Past*, **7 (1)**, 319–338, doi:10.5194/cp-7-319-2011.
- Brohan, P., J. J. Kennedy, I. Harris, S. F. B. Tett, and P. D. Jones, 2006: Uncertainty estimates in regional and global observed temperature changes: A new data set from 1850. *J. Geophys. Res.-Atmos.*, **111 (D12)**, doi:10.1029/2005JD006548.
- 1050 Calvin, K., et al., 2012: The role of asia in mitigating climate change: Results from the asia modeling exercise. *Energ. Econ.*, **34, Supplement 3**, S251–S260, doi:10.1016/j.eneco.2012.09.003.
- Canadell, J. G., et al., 2007: Contributions to accelerating atmospheric CO₂ growth from economic activity, carbon intensity, and efficiency of natural sinks. *Proc. Nat. Acad. Sci. USA*, **104 (47)**, 18 866–18 870, doi:10.1073/pnas.0702737104.
- 1055 Charman, D. J., et al., 2013: Climate-related changes in peatland carbon accumulation during the last millennium. *Biogeosciences*, **10 (2)**, 929–944, doi:10.5194/bg-10-929-2013.
- Collaty, G. J., J. A. Berry, G. D. Farquhar, and J. Pierce, 1990: The relationship between the rubisco reaction-mechanism and models of photosynthesis. *Phys. Chem. Earth*, **13 (3)**, 219–225, doi:10.1111/j.1365-3040.1990.tb01306.x.
- 1060 Collins, M., et al., 2013: *Climate Change 2013: The Physical Science Basis. Contribution of Working Group I to the Fifth Assessment Report of the Intergovernmental Panel on Climate Change*, chap. 12: Long-term Climate Change: Projections, Commitments and Irreversibility, 1029–1136. Cambridge University Press, Cambridge, United Kingdom and New York, NY, USA.
- 1065 Conway, T. and P. Tans, 2011: Trends in atmospheric carbon dioxide. Data set, NOAA/ESRL. Available on-line: <http://www.esrl.noaa.gov/gmd/ccgg/trends/>.

- Deutsch, C., A. Ferrel, B. Seibel, H.-O. Poertner, and R. B. Huey, 2015: Climate change tightens a metabolic constraint on marine habitats. *Science*, **348** (6239), 1132–1135, doi:10.1126/science.aaa1605.
- 1070 Dickson, A., 2002: *Handbook of methods of the analysis of the various parameters of the carbon dioxide system in seawater*. US Dep. of Energy, Washington, D. C.
- Edwards, N. and R. Marsh, 2005: Uncertainties due to transport-parameter sensitivity in an efficient 3-D ocean-climate model. *Clim. Dynam.*, **24** (4), 415–433, doi:10.1007/s00382-004-0508-8.
- Etheridge, D. M., L. P. Steele, R. L. Langenfelds, R. J. Francey, J. M. Barnola, and V. I. Morgan, 1996: Natural
1075 and anthropogenic changes in atmospheric CO₂ over the last 1000 years from air in antarctic ice and firn. *J. Geophys. Res.-Atmos.*, **101** (D2), 4115–4128, doi:10.1029/95JD03410.
- Farquhar, G. D., S. V. Caemmerer, and J. A. Berry, 1980: A biochemical-model of photosynthetic CO₂ assimilation in leaves of C-3 species. *Planta*, **149** (1), 78–90.
- Flato, G., et al., 2013: *Climate Change 2013: The Physical Science Basis. Contribution of Working Group I to the Fifth Assessment Report of the Intergovernmental Panel on Climate Change*, chap. 9: Evaluation of Climate Models, 741–866. Cambridge University Press, Cambridge, United Kingdom and New York, NY, USA.
- 1080 Forster, P., et al., 2007: *Climate Change 2007: The Physical Science Basis. Contribution of Working Group I to the Fourth Assessment Report of the Intergovernmental Panel on Climate Change*, chap. 2: Changes in Atmospheric Constituents and in Radiative Forcing, 129–234. Cambridge University Press, Cambridge, United Kingdom and New York, NY, USA.
- 1085 Friedlingstein, P., S. Solomon, G.-K. Plattner, R. Knutti, P. Ciais, and M. R. Raupach, 2011: Long-term climate implications of twenty-first century options for carbon dioxide emission mitigation. *Nat. Clim. Ch.*, **1** (9), 457–461, doi:10.1038/NCLIMATE1302.
- 1090 Frölicher, T. L. and D. J. Paynter, 2015: Extending the relationship between global warming and cumulative carbon emissions to multi-millennial timescales. *Environ. Res. Lett.*, **10** (075002).
- Frölicher, T. L., M. Winton, and J. L. Sarmiento, 2014: Continued global warming after CO₂ emissions stoppage. *Nat. Clim. Ch.*, **4** (1), 40–44, doi:10.1038/nclimate2060, <http://dx.doi.org/10.1038/nclimate2060>.
- Gangstø, R., M. Gehlen, B. Schneider, L. Bopp, O. Aumont, and F. Joos, 2008: Modeling the marine aragonite
1095 cycle: changes under rising carbon dioxide and its role in shallow water CaCO₃ dissolution. *Biogeosciences*, **5** (4), 1057–1072.
- Garcia, H. E., R. A. Locarnini, T. P. Boyer, J. I. Antonov, M. M. Zweng, O. K. Baranova, and J. D. R., 2010: World ocean atlas 2009, volume 4: Nutrients (phosphate, nitrate, silicate). NOAA Atlas NESDIS 71, U.S. Government Printing Office, 398 pp pp., Washington, D.C.
- 1100 Gattuso, J.-P., et al., 2015: Contrasting futures for ocean and society from different anthropogenic CO₂ emissions scenarios. *Science*, **349** (6243), 45+, doi:10.1126/science.aac4722.
- Gerber, M. and F. Joos, 2010: Carbon sources and sinks from an Ensemble Kalman Filter ocean data assimilation. *Global Biogeochem. Cy.*, **24**, doi:10.1029/2009GB003531.
- Gerber, M. and F. Joos, 2013: An Ensemble Kalman Filter multi-tracer assimilation: Determining uncertain ocean model parameters for improved climate-carbon cycle projections. *Ocean Model.*, **64**, 29–45,
1105 doi:10.1016/j.ocemod.2012.12.012.

- Gerber, M., F. Joos, M. Vazquez-Rodriguez, F. Touratier, and C. Goyet, 2009: Regional air-sea fluxes of anthropogenic carbon inferred with an Ensemble Kalman Filter. *Global Biogeochem. Cy.*, **23**, doi:10.1029/2008GB003247.
- 1110 Gillett, N. P., V. K. Arora, D. Matthews, and M. R. Allen, 2013: Constraining the ratio of global warming to cumulative CO₂ emissions using CMIP5 simulations. *J. Climate*, **26** (18), 6844–6858, doi:10.1175/JCLI-D-12-00476.1.
- Global Soil Data Task Group, 2000: Global gridded surfaces of selected soil characteristics (IGBP-DIS). Data set doi:10.3334/ORNLDAAC/569, Oak Ridge National Laboratory Distributed Active Archive Center, Oak
 1115 Ridge, Tennessee, U.S.A. <http://www.daac.ornl.gov>.
- GLOBALVIEW-CO₂, 2011: Cooperative atmospheric data integration project - carbon dioxide. Cd-rom, NOAA ESRL, Boulder, Colorado. Also available on Internet via anonymous FTP to <ftp.cmdl.noaa.gov>, Path: [ccg/co2/GLOBALVIEW](ftp://ftp.cmdl.noaa.gov/ccg/co2/GLOBALVIEW).
- Gobron, N., et al., 2006: Evaluation of fraction of absorbed photosynthetically active radiation products for different canopy radiation transfer regimes: Methodology and results using Joint Research Center products derived from SeaWiFS against ground-based estimations. *J. Geophys. Res.-Atmos.*, **111** (D13110), doi:10.1029/2005JD006511.
- 1120 Gregory, J. M., C. D. Jones, P. Cadule, and P. Friedlingstein, 2009: Quantifying carbon cycle feedbacks. *J. Climate*, **22** (19), 5232–5250, doi:10.1175/2009JCLI2949.1.
- 1125 Gruber, N., C. Hauri, Z. Lachkar, D. Loher, T. L. Froelicher, and G.-K. Plattner, 2012: Rapid progression of ocean acidification in the California current system. *Science*, **337** (6091), 220–223, doi:10.1126/science.1216773.
- Grübler, A., et al., 2007: Integrated assessment of uncertainties in greenhouse gas emissions and their mitigation: Introduction and overview. *Technol. Forecast. Soc.*, **74** (7), 873–886,
 1130 doi:10.1016/j.techfore.2006.07.009.
- Hallgren, W. S. and A. J. Pitman, 2000: The uncertainty in simulations by a global biome model (BIOMES) to alternative parameter values. *Glob. Change Biol.*, **6** (5), 483–495, doi:10.1046/j.1365-2486.2000.00325.x.
- Harris, G. R., D. M. H. Sexton, B. B. Booth, M. Collins, and J. M. Murphy, 2013: Probabilistic projections of transient climate change. *Clim. Dynam.*, **40** (11-12), 2937–2972, doi:10.1007/s00382-012-1647-y.
- 1135 Hartmann, D. L., et al., 2013: *Climate Change 2013: The Physical Science Basis. Contribution of Working Group I to the Fifth Assessment Report of the Intergovernmental Panel on Climate Change*, chap. 2: Observations: Atmosphere and Surface, 159–254. Cambridge University Press, Cambridge, United Kingdom and New York, NY, USA.
- Hawkins, E. and R. Sutton, 2009: The potential to narrow uncertainty in regional climate predictions. *Bull. Amer. Meteorol. Soc.*, **90** (8), 1095+, doi:10.1175/2009BAMS2607.1.
- 1140 Haxeltine, A. and I. C. Prentice, 1996: A general model for the light-use efficiency of primary production. *Funct. Ecol.*, **10** (5), 551–561, doi:10.2307/2390165.
- Heinze, C., 2004: Simulating oceanic CaCO₃ export production in the greenhouse. *Geophys. Res. Lett.*, **31** (L16308), doi:10.1029/2004GL020613.
- 1145 Herrington, T. and K. Zickfeld, 2014: Path independence of climate and carbon cycle response over a broad range of cumulative carbon emissions. *Earth Syst. Dyn.*, **5** (2), 409–422, doi:10.5194/esd-5-409-2014.

- Holden, P. B., N. R. Edwards, P. H. Garthwaite, and R. D. Wilkinson, 2015: Emulation and interpretation of high-dimensional climate model outputs. *J. Appl. Sat.*, **42** (9), 2038–2055, doi:10.1080/02664763.2015.1016412.
- 1150 Holden, P. B., N. R. Edwards, D. Gerten, and S. Schaphoff, 2013: A model-based constraint on CO₂ fertilisation. *Biogeosciences*, **10** (1), 339–355, doi:10.5194/bg-10-339-2013.
- Holden, P. B., N. R. Edwards, K. I. C. Oliver, T. M. Lenton, and R. D. Wilkinson, 2010: A probabilistic calibration of climate sensitivity and terrestrial carbon change in GENIE-1. *Clim. Dynam.*, **35** (5), 785–806, doi:10.1007/s00382-009-0630-8.
- 1155 Howes, E. L., F. Joos, M. Eakin, and J.-P. Gattuso, 2015: An updated synthesis of the observed and projected impacts of climate change on the chemical, physical and biological processes in the oceans. *Front. Mar. Sci.*, **2** (36), doi:10.3389/fmars.2015.00036, http://www.frontiersin.org/global_change_and_the_future_ocean/10.3389/fmars.2015.00036/abstract.
- Huang, B. Y., P. H. Stone, A. P. Sokolov, and I. V. Kamenkovich, 2003: Ocean heat uptake in transient climate change: Mechanisms and uncertainty due to subgrid-scale eddy mixing. *J. Climate*, **16** (20), 3344–3356, doi:10.1175/1520-0442(2003)016<3344:OHUITC>2.0.CO;2.
- 1160 Huber, M. and R. Knutti, 2014: Natural variability, radiative forcing and climate response in the recent hiatus reconciled. *Nature Geosci.*, **7** (9), 651–656, doi:10.1038/NGEO2228.
- IPCC, 1995: *Climate Change 1995: The Science of Climate Change, Technical Summary*. Press Syndicate of the University of Cambridge, Cambridge, United Kingdom and New York, NY, USA., 11–34 pp.
- 1165 IPCC, 2013: *Summary for Policymakers. In: Climate Change 2013: The Physical Science Basis. Contribution of Working Group I to the Fifth Assessment Report of the Intergovernmental Panel on Climate Change*. Cambridge University Press, Cambridge, United Kingdom and New York, NY, USA., 3–32 pp.
- IPCC, 2014: *Climate Change 2014: Impacts, Adaptation, and Vulnerability. Contribution of Working Group I to the Fifth Assessment Report of the Intergovernmental Panel on Climate Change*. Cambridge University Press, Cambridge, United Kingdom and New York, NY, USA., 1132pp pp.
- 1170 Jenkinson, D. S., 1990: The turnover of organic-carbon and nitrogen in soil. *Philos. T. Roy. Soc. B*, **329** (1255), 361–368, doi:10.1098/rstb.1990.0177.
- Joos, F., M. Bruno, R. Fink, U. Siegenthaler, T. F. Stocker, and C. Le Quéré, 1996: An efficient and accurate representation of complex oceanic and biospheric models of anthropogenic carbon uptake. *Tellus B*, **48** (3), 397–417, doi:10.1034/j.1600-0889.1996.t01-2-00006.x.
- 1175 Joos, F., T. L. Frölicher, M. Steinacher, and G.-K. Plattner, 2011: *Ocean Acidification*, chap. 14: Impact of climate change mitigation on ocean acidification projections, 319–338. Oxford University Press, New York, USA.
- 1180 Joos, F., G.-K. Plattner, T. F. Stocker, O. Marchal, and A. Schmittner, 1999: Global warming and marine carbon cycle feedbacks and future atmospheric CO₂. *Science*, **284** (5413), 464–467.
- Joos, F., I. C. Prentice, S. Sitch, R. Meyer, G. Hooss, G.-K. Plattner, S. Gerber, and K. Hasselmann, 2001: Global warming feedbacks on terrestrial carbon uptake under the Intergovernmental Panel on Climate Change (IPCC) emission scenarios. *Global Biogeochem. Cy.*, **15** (4), 891–907.

- 1185 Joos, F., et al., 2013: Carbon dioxide and climate impulse response functions for the computation of greenhouse gas metrics: a multi-model analysis. *Atmos. Chem. Phys.*, **13**, 2793–2825, doi:10.5194/acp-13-2793-2013, <http://www.atmos-chem-phys.net/13/2793/2013>.
- Karl, T. R., et al., 2015: Possible artifacts of data biases in the recent global surface warming hiatus. *Science*, **348 (6242)**, 1469–1472, doi:10.1126/science.aaa5632.
- 1190 Keeling, C. D. and T. P. Whorf, 2005: *Atmospheric CO₂ records from sites in the SIO air sampling network*. Trends Online: A compendium of Data on Global Change, Carbon Dioxide Information Analysis Center, Oak Ridge National Laboratory, US Department of Energy, Oak Ridge, Tenn., U.S.A.
- Keith, H., B. G. Mackey, and D. B. Lindenmayer, 2009: Re-evaluation of forest biomass carbon stocks and lessons from the world's most carbon-dense forests. *Proc. Nat. Acad. Sci. USA*, **106 (28)**, 11 635–11 640, doi:10.1073/pnas.0901970106.
- 1195 Kergoat, L., 1998: A model for hydrological equilibrium of leaf area index on a global scale. *J. Hydrol.*, **212 (1-4)**, 268–286, doi:10.1016/S0022-1694(98)00211-X.
- Key, R. M., et al., 2004: A global ocean carbon climatology: Results from Global Data Analysis Project (GLODAP). *Global Biogeochem. Cy.*, **18 (GB4031+)**, doi:10.1029/2004GB002247.
- 1200 Knutti, R. and G. C. Hegerl, 2008: The equilibrium sensitivity of the Earth's temperature to radiation changes. *Nature Geosci.*, **1 (11)**, 735–743, doi:10.1038/ngeo337.
- Knutti, R., F. Joos, S. A. Muller, G. K. Plattner, and T. F. Stocker, 2005: Probabilistic climate change projections for CO₂ stabilization profiles. *Geophys. Res. Lett.*, **32 (20)**, doi:10.1029/2005GL023294.
- Knutti, R., T. F. Stocker, F. Joos, and G. K. Plattner, 2002: Constraints on radiative forcing and future climate change from observations and climate model ensembles. *Nature*, **416 (6882)**, 719–723, doi:10.1038/416719a.
- 1205 Knutti, R., T. F. Stocker, F. Joos, and G. K. Plattner, 2003: Probabilistic climate change projections using neural networks. *Clim. Dynam.*, **21 (3-4)**, 257–272, doi:10.1007/s00382-003-0345-1.
- Krasting, J. P., J. P. Dunne, E. Shevliakova, and R. J. Stouffer, 2014: Trajectory sensitivity of the transient climate response to cumulative carbon emissions. *Geophys. Res. Lett.*, **41 (7)**, 2520–2527, doi:10.1002/2013GL059141.
- 1210 Kummer, J. R. and A. E. Dessler, 2014: The impact of forcing efficacy on the equilibrium climate sensitivity. *Geophys. Res. Lett.*, **41 (10)**, 3565–3568, doi:10.1002/2014GL060046.
- Kwon, E. Y., F. Primeau, and J. L. Sarmiento, 2009: The impact of remineralization depth on the air-sea carbon balance. *Nature Geosci.*, **2 (9)**, 630–635, doi:10.1038/NGEO612.
- 1215 Leverenz, J. W., 1988: The effects of illumination sequence, CO₂ concentration, temperature and acclimation on the convexity of the photosynthetic light response curve. *Physiol. Plantarum*, **74 (2)**, 332–341, doi:10.1111/j.1399-3054.1988.tb00639.x.
- Levitus, S., et al., 2012: World ocean heat content and thermosteric sea level change (0-2000 m), 1955-2010. *Geophys. Res. Lett.*, **39**, doi:10.1029/2012GL051106.
- 1220 Little, C. M., M. Oppenheimer, and N. M. Urban, 2013: Upper bounds on twenty-first-century antarctic ice loss assessed using a probabilistic framework. *Nat. Clim. Ch.*, **3 (7)**, 654–659, doi:10.1038/NCLIMATE1845.
- Lloyd, J. and J. A. Taylor, 1994: On the temperature-dependence of soil respiration. *Funct. Ecol.*, **8 (3)**, 315–323, doi:10.2307/2389824.

- 1225 Locarnini, R. A., A. V. Mishonov, J. I. Antonov, T. P. Boyer, H. E. Garcia, M. M. Baranova, O. K. Zweng,
and D. R. Johnson, 2010: World ocean atlas 2009, volume 1: Temperature. NOAA Atlas NESDIS 68, U.S.
Government Printing Office, 184 pp pp., Washington, D.C.
- Luyssaert, S., et al., 2007: CO₂ balance of boreal, temperate, and tropical forests derived from a global database.
Glob. Change Biol., **13** (12), 2509–2537, doi:10.1111/j.1365-2486.2007.01439.x.
- 1230 Lyman, J. M., S. A. Good, V. V. Gouretski, M. Ishii, G. C. Johnson, M. D. Palmer, D. M. Smith, and J. K. Willis,
2010: Robust warming of the global upper ocean. *Nature*, **465** (7296), 334–337, doi:10.1038/nature09043.
- Magnani, F., S. Leonardi, R. Tognetti, J. Grace, and M. Borghetti, 1998: Modelling the surface conductance of
a broad-leaf canopy: effects of partial decoupling from the atmosphere. *Phys. Chem. Earth*, **21** (9), 867–879,
doi:10.1046/j.1365-3040.1998.00328.x.
- 1235 Maier-Reimer, E. and K. Hasselmann, 1987: Transport and storage of CO₂ in the ocean - an inorganic ocean-
circulation carbon cycle model. *Clim. Dynam.*, **2** (2), 63–90, doi:10.1007/BF01054491.
- Marotzke, J. and P. M. Forster, 2015: Forcing, feedback and internal variability in global temperature trends.
Nature, **517** (7536), 565–U291, doi:10.1038/nature14117.
- Matthews, H. D., N. P. Gillett, P. A. Stott, and K. Zickfeld, 2009: The proportionality of global warming to
cumulative carbon emissions. *Nature*, **459** (7248), 829+, doi:10.1038/nature08047.
- 1240 McKay, M. D., R. J. Beckman, and W. J. Conover, 1979: A comparison of three methods for selecting val-
ues of input variables in the analysis of output from a computer code. *Technometrics*, **21** (2), 239–245,
doi:10.2307/1268522.
- McNeil, B. I. and R. J. Matear, 2007: Climate change feedbacks on future oceanic acidification. *Tellus B*, **59**,
191–198.
- 1245 Meinshausen, M., N. Meinshausen, W. Hare, S. C. B. Raper, K. Frieler, R. Knutti, D. J. Frame, and M. R. Allen,
2009: Greenhouse-gas emission targets for limiting global warming to 2 °C. *Nature*, **458** (7242), 1158–1162,
doi:10.1038/nature08017.
- Meinshausen, M., et al., 2011: The RCP greenhouse gas concentrations and their extension from 1765 to 2300.
Clim. Change, **109**, 213–241, doi:10.1007/s10584-011-0156-z.
- 1250 Moss, R. H., et al., 2010: The next generation of scenarios for climate change research and assessment. *Nature*,
463 (7282), 747–756, doi:10.1038/nature08823.
- Müller, S. A., F. Joos, N. R. Edwards, and T. F. Stocker, 2006: Water mass distribution and ventilation time
scales in a cost-efficient, three-dimensional ocean model. *J. Climate*, **19** (21), 5479–5499.
- Müller, S. A., F. Joos, G.-K. Plattner, N. R. Edwards, and T. F. Stocker, 2008: Modeled natural and excess
1255 radiocarbon: Sensitivities to the gas exchange formulation and ocean transport strength. *Global Biogeochem.*
Cy., **22** (3), doi:10.1029/2007GB003065.
- Murphy, J. M., D. M. H. Sexton, D. N. Barnett, G. S. Jones, M. J. Webb, and D. A. Stainforth, 2004: Quan-
tification of modelling uncertainties in a large ensemble of climate change simulations. *Nature*, **430** (7001),
768–772, doi:10.1038/nature02771.
- 1260 Myhre, G., et al., 2013: *Climate Change 2013: The Physical Science Basis. Contribution of Working Group I to
the Fifth Assessment Report of the Intergovernmental Panel on Climate Change*, chap. 8: Anthropogenic and
Natural Radiative Forcing, 659–740. Cambridge University Press, Cambridge, United Kingdom and New
York, NY, USA.

- 1265 Nieves, V., J. K. Willis, and W. C. Patzert, 2015: Recent hiatus caused by decadal shift in indo-pacific heating. *Science*, **349** (6247), 532–535, doi:10.1126/science.aaa4521.
- Olson, R., R. Sriver, M. Goes, N. M. Urban, H. D. Matthews, M. Haran, and K. Keller, 2012: A climate sensitivity estimate using Bayesian fusion of instrumental observations and an earth system model. *J. Geophys. Res.-Atmos.*, **117**, doi:10.1029/2011JD016620.
- 1270 Olson, R. J., J. M. O. Scurlock, S. D. Prince, D. L. Zheng, and J. K. R., 2001: NPP multi-biome: NPP and driver data for ecosystem model-data intercomparison. Data set, Oak Ridge National Laboratory Distributed Active Archive Center, Oak Ridge, Tennessee, U.S.A. <http://www.daac.ornl.gov>.
- Orr, J. C., 2011: *Ocean Acidification*, chap. 3: Recent and future changes in ocean carbonate chemistry, 41–66. Oxford University Press, New York, USA.
- Orr, J. C., et al., 2005: Anthropogenic ocean acidification over the twenty-first century and its impact on calcifying organisms. *Nature*, **437**, 681–686.
- 1275 Otto, A., et al., 2013: Energy budget constraints on climate response. *Nature Geosci.*, **6** (6), 415–416, doi:10.1038/ngeo1836.
- Parekh, P., F. Joos, and S. A. Müller, 2008: A modeling assessment of the interplay between aeolian iron fluxes and iron-binding ligands in controlling carbon dioxide fluctuations during antarctic warm events. *Paleoceanography*, **23** (4), doi:10.1029/2007PA001531.
- 1280 Peters, G. P., et al., 2013: Commentary: The challenge to keep global warming below 2 degrees C. *Nat. Clim. Ch.*, **3** (1), 4–6.
- Pfister, P. L. and T. F. Stocker, submitted: Earth system commitments due to delayed mitigation. *Environ. Res. Lett.*
- 1285 Plattner, G.-K., F. Joos, T. F. Stocker, and O. Marchal, 2001: Feedback mechanisms and sensitivities of ocean carbon uptake under global warming. *Tellus B*, **53** (5), 564–592.
- Pörtner, H.-O., M. Gutowska, A. Ishimatsu, M. Lucassen, F. Meizner, and B. A. Seibel, 2011: *Ocean Acidification*, chap. 8: Effects of ocean acidification on nektonic organisms, 154–175. Oxford University Press, New York, USA.
- 1290 Prentice, I. C., et al., 2001: *Climate Change 2001: The Scientific Basis. Contribution of Working Group I to the Third Assessment Report of the Intergovernmental Panel on Climate Change*, chap. The Carbon Cycle and Atmospheric Carbon Dioxide, 183–237. Cambridge University Press, Cambridge, United Kingdom and New York, NY, USA.
- Raich, J. W. and W. H. Schlesinger, 1992: The global carbon-dioxide flux in soil respiration and its relationship to vegetation and climate. *Tellus B*, **44** (2), 81–99, doi:10.1034/j.1600-0889.1992.t01-1-00001.x.
- 1295 Ritz, S. P., T. F. Stocker, and F. Joos, 2011a: A coupled dynamical ocean-energy balance atmosphere model for paleoclimate studies. *J. Climate*, **24** (2), 349–375, doi:10.1175/2010JCLI3351.1.
- Ritz, S. P., T. F. Stocker, and J. P. Severinghaus, 2011b: Noble gases as proxies of mean ocean temperature: sensitivity studies using a climate model of reduced complexity. *Quaternary Sci. Rev.*, **30** (25-26), 3728–3741, doi:10.1016/j.quascirev.2011.09.021.
- 1300 Roberts, C. D., M. D. Palmer, D. McNeall, and M. Collins, 2015: Quantifying the likelihood of a continued hiatus in global warming. *Nat. Clim. Ch.*, **5** (4), 337–342.

- Roemmich, D., J. Church, J. Gilson, D. Monselesan, P. Sutton, and S. Wijffels, 2015: Unabated planetary warming and its ocean structure since 2006. *Nat. Clim. Ch.*, **5** (3), 240–245, doi:10.1038/NCLIMATE2513.
- 1305 Rogelj, J., et al., 2011: Emission pathways consistent with a 2 degrees C global temperature limit. *Nat. Clim. Ch.*, **1** (8), 413–418, doi:10.1038/NCLIMATE1258.
- Schleussner, C.-F., A. Levermann, and M. Meinshausen, 2014: Probabilistic projections of the atlantic overturning. *Clim. Change*, **127** (3-4), 579–586, doi:10.1007/s10584-014-1265-2.
- Schmittner, A., N. M. Urban, K. Keller, and D. Matthews, 2009: Using tracer observations to reduce the uncertainty of ocean diapycnal mixing and climate-carbon cycle projections. *Global Biogeochem. Cy.*, **23** (GB4009), doi:10.1029/2008GB003421.
- 1310 Schwartz, S. E., 2012: Determination of earth’s transient and equilibrium climate sensitivities from observations over the twentieth century: Strong dependence on assumed forcing. *Surveys in Geophys.*, **33** (3-4), 745–777, doi:10.1007/s10712-012-9180-4.
- 1315 Sherwood, S. C. and M. Huber, 2010: An adaptability limit to climate change due to heat stress. *Proc. Nat. Acad. Sci. USA*, **107** (21), 9552–9555, doi:10.1073/pnas.0913352107.
- Shindell, D., 2014a: Reply to ‘questions of bias in climate models’. *Nat. Clim. Ch.*, **4** (9), 742–743.
- Shindell, D. T., 2014b: Inhomogeneous forcing and transient climate sensitivity. *Nat. Clim. Ch.*, **4** (4), 274–277, doi:10.1038/NCLIMATE2136.
- 1320 Shine, K. P., J. S. Fuglestedt, K. Hailemariam, and N. Stuber, 2005: Alternatives to the global warming potential for comparing climate impacts of emissions of greenhouse gases. *Clim. Change*, **68** (3), 281–302, doi:10.1007/s10584-005-1146-9.
- Siegenthaler, U. and H. Oeschger, 1978: Predicting future atmospheric carbon-dioxide levels. *Science*, **199** (4327), 388–395, doi:10.1126/science.199.4327.388.
- 1325 Sitch, S., et al., 2003: Evaluation of ecosystem dynamics, plant geography and terrestrial carbon cycling in the LPJ dynamic global vegetation model. *Glob. Change Biol.*, **9** (2), 161–185.
- Spahni, R., F. Joos, B. D. Stocker, M. Steinacher, and Z. C. Yu, 2013: Transient simulations of the carbon and nitrogen dynamics in northern peatlands: from the Last Glacial Maximum to the 21st century. *Clim. Past*, **9**, 1287–1308, doi:doi:10.5194/cp-9-1287-2013.
- 1330 Stainforth, D. A., 2014: Climate projection: Testing climate assumptions. *Nat. Clim. Ch.*, **4** (4), 248–249.
- Steinacher, M., F. Joos, T. L. Frölicher, G.-K. Plattner, and S. C. Doney, 2009: Imminent ocean acidification in the Arctic projected with the NCAR global coupled carbon cycle-climate model. *Biogeosciences*, **6** (4), 515–533.
- Steinacher, M., F. Joos, and T. F. Stocker, 2013: Allowable carbon emissions lowered by multiple climate targets. *Nature*, **499** (7457), 197+, doi:10.1038/nature12269.
- 1335 Stocker, B. D., F. Feissli, K. M. Strassmann, R. Spahni, and F. Joos, 2014: Past and future carbon fluxes from land use change, shifting cultivation and wood harvest. *Tellus B*, **66**, doi:10.3402/tellusb.v66.23188.
- Stocker, T. F., 2013: The closing door of climate targets. *Science*, **339** (6117), 280–282, doi:10.1126/science.1232468.
- 1340 Strassmann, K. M., F. Joos, and G. Fischer, 2008: Simulating effects of land use changes on carbon fluxes: past contributions to atmospheric CO₂ increases and future commitments due to losses of terrestrial sink capacity. *Tellus B*, **60** (4), 583–603, doi:10.1111/j.1600-0889.2008.00340.x.

- 1345 Strassmann, K. M., G.-K. Plattner, and F. Joos, 2009: CO₂ and non-CO₂ radiative forcings in climate projections for twenty-first century mitigation scenarios. *Clim. Dynam.*, **33** (6), 737–749, doi:10.1007/s00382-008-0505-4.
- Tarnocai, C., J. G. Canadell, E. A. G. Schuur, P. Kuhry, G. Mazhitova, and S. Zimov, 2009: Soil organic carbon pools in the northern circumpolar permafrost region. *Global Biogeochem. Cy.*, **23** (GB2023), doi:10.1029/2008GB003327.
- 1350 Tarnocai, C., D. Swanson, J. Kimble, and G. Broll, 2007: Northern circumpolar soil carbon database. Digital database, Research Branch, Agriculture and Agri-Food Canada, Ottawa, Canada. <http://wms1.agr.gc.ca/NortherCircumpolar/northercircumpolar.zip>.
- Trumbore, S. E., 2000: Age of soil organic matter and soil respiration: radiocarbon constraints on belowground C dynamics. *Ecol. Appl.*, **10**, 399–411.
- 1355 United Nations, 1992: United Nations Framework Convention on Climate Change. Document FCCC/INFORMAL/84 GE.05-62220 (E) 200705, United Nations. <http://unfccc.int/resource/docs/convkp/conveng.pdf>.
- United Nations, 2010: Report of the Conference of the Parties on its sixteenth session, held in Cancun from 29 November to 10 December 2010. Document FCCC/CP/2010/7/Add.1, United Nations. <http://unfccc.int/resource/docs/2010/cop16/eng/07a01.pdf>.
- 1360 United Nations, 2015: Conference of the Parties. ADOPTION OF THE PARIS AGREEMENT. Proposal by the President. Document FCCC/CP/2015/L.9/Rev.1, United Nations. <https://unfccc.int/resource/docs/2015/cop21/eng/l09r01.pdf>.
- van der Werf, G. R. and A. J. Dolman, 2014: Impact of the Atlantic Multidecadal Oscillation (AMO) on deriving anthropogenic warming rates from the instrumental temperature record. *Earth Syst. Dyn.*, **5** (2), 375–382, doi:10.5194/esd-5-375-2014.
- 1365 Van Vuuren, D. P., et al., 2008: Temperature increase of 21st century mitigation scenarios. *Proc. Nat. Acad. Sci. USA*, **105** (40), 15 258–15 262, doi:10.1073/pnas.0711129105.
- von Schuckmann, K. and P.-Y. Le Traon, 2011: How well can we derive global ocean indicators from Argo data? *Ocean Sci.*, **7** (6), 783–791, doi:10.5194/os-7-783-2011.
- 1370 Weyant, J. R., F. C. de la Chesnaye, and G. J. Blanford, 2006: Overview of EMF-21: Multigas mitigation and climate policy. *Energ. J.*, **27** (Special Issue 3), 1–32.
- Wigley, T. M. L. and S. C. B. Raper, 2001: Interpretation of high projections for global-mean warming. *Science*, **293** (5529), 451–454, doi:10.1126/science.1061604.
- 1375 Williamson, D., M. Goldstein, L. Allison, A. Blaker, P. Challenor, L. Jackson, and K. Yamazaki, 2013: History matching for exploring and reducing climate model parameter space using observations and a large perturbed physics ensemble. *Clim. Dynam.*, **41** (7-8), 1703–1729, doi:10.1007/s00382-013-1896-4.
- Yu, Z., J. Loisel, D. P. Broseau, D. W. Beilman, and S. J. Hunt, 2010: Global peatland dynamics since the last glacial maximum. *Geophys. Res. Lett.*, **37**, doi:10.1029/2010GL043584.
- 1380 Zaehle, S., S. Sitch, B. Smith, and F. Hatterman, 2005: Effects of parameter uncertainties on the modeling of terrestrial biosphere dynamics. *Global Biogeochem. Cy.*, **19** (3), doi:10.1029/2004GB002395.
- Zickfeld, K., V. K. Arora, and N. P. Gillett, 2012: Is the climate response to CO₂ emissions path dependent? *Geophys. Res. Lett.*, **39**, doi:10.1029/2011GL050205.

- Zickfeld, K., M. Eby, H. D. Matthews, and A. J. Weaver, 2009: Setting cumulative emissions targets to reduce the risk of dangerous climate change. *Proc. Nat. Acad. Sci. USA*, **106 (38)**, 16 129–16 134, doi:10.1073/pnas.0805800106.
- 1385
- Zickfeld, K. and T. Herrington, 2015: The time lag between a carbon dioxide emission and maximum warming increases with the size of the emission. *Environ. Res. Lett.*, **10 (3)**, doi:10.1088/1748-9326/10/3/031001.

Table 1. Response to a 100 Gt C CO₂ emission pulse on different time scales as simulated by the Bern3D-LPJ model (cf. Fig. 2). The values (ensemble median and 90 % range) indicate the difference to a baseline simulation without emission pulse after 20, 50, 100, and 500 years for the atmospheric CO₂ concentration ($\Delta p\text{CO}_2$), global annual mean surface temperature (ΔSAT), steric sea level rise (SSLR), Atlantic meridional overturning circulation (ΔAMOC), global annual mean surface ocean pH (ΔpH), annual mean surface aragonite saturation in the Southern Ocean ($\Delta\Omega_{\text{arag,S.O.}}$) and in the tropics ($\Delta\Omega_{\text{arag,trop.}}$), and global soil carbon stocks ($\Delta\text{C}_{\text{soil}}$).

Variable	Units	20 years	50 years	100 years	500 years
$\Delta p\text{CO}_2$	ppm	30.6 [26.9–33.8]	25.6 [21.0–29.6]	22.0 [17.3–26.6]	15.0 [11.2–21.9]
ΔSAT	°C	0.18 [0.10–0.27]	0.17 [0.10–0.30]	0.17 [0.09–0.32]	0.14 [0.06–0.35]
SSLR	cm	0.82 [0.51–1.15]	1.26 [0.68–1.99]	1.65 [0.80–2.81]	2.44 [1.03–5.82]
ΔAMOC	%	–2.4 [–4.0 to –0.8]	–2.1 [–4.5 to –0.3]	–1.8 [–4.5–0.0]	–0.8 [–3.9–0.7]
ΔpH	10 ^{–2}	–2.6 [–2.8 to –2.2]	–2.3 [–2.6 to –1.9]	–2.0 [–2.4 to –1.6]	–1.4 [–2.0 to –1.0]
$\Delta\Omega_{\text{arag,S.O.}}$	10 ^{–2}	–7.7 [–9.0 to –5.8]	–6.8 [–7.9 to –5.4]	–5.9 [–6.9 to –4.7]	–4.1 [–5.3 to –3.1]
$\Delta\Omega_{\text{arag,trop.}}$	10 ^{–2}	–12.7 [–13.9 to –11.4]	–10.8 [–12.2 to –9.2]	–9.3 [–10.8 to –7.7]	–6.5 [–8.5 to –5.2]
$\Delta\text{C}_{\text{soil}}$	Gt C	1.11 [–1.03–5.22]	1.38 [–3.05–8.92]	1.42 [–6.82–12.01]	1.73 [–21.65–13.32]

Table 2. Transient (TCPRETRE^X) and peak ($\text{TCPRETRE}_{\text{peak}}^X$) response per 1000 Gt C total CO₂ emissions estimated with different methods. Ensemble medians and 68 %-ranges (i.e. the 16% and 84% percentiles) are taken from the relative probability maps derived from all model configurations and scenarios at 1000, 2000, and 3000 Gt C total emissions as well as from the linear regression slope (see Methods). The correlation coefficient (r , median and 68 %-range) and the median standard error as percentage of the median regression slope ($\hat{\sigma}$) are given for the linear fit of the peak response.

Variable X	Method	TRE ^{X}	TRE ^{X} _{peak}	Goodness of linear fit
ΔSAT (°C)	1000 Gt C	1.95 [1.12–3.38]	2.31 [1.49–3.81]	
	2000 Gt C	1.96 [1.23–3.12]	2.12 [1.37–3.30]	
	3000 Gt C	1.90 [1.27–2.66]	1.92 [1.29–2.68]	
	Lin. reg.	1.75 [1.18–2.48]	1.76 [1.14–2.56]	$r = 0.92 \pm 0.04$, $\hat{\sigma} = 36\%$
ΔSST (°C)	1000 Gt C	1.47 [0.89–2.45]	1.68 [1.11–2.68]	
	2000 Gt C	1.40 [0.91–2.08]	1.49 [0.99–2.15]	
	3000 Gt C	1.30 [0.91–1.70]	1.32 [0.91–1.72]	
	Lin. reg.	1.30 [0.87–1.78]	1.31 [0.85–1.86]	$r = 0.92 \pm 0.04$, $\hat{\sigma} = 35\%$
SSLR (cm)	1000 Gt C	25 [14–44]	29 [18–48]	
	2000 Gt C	23 [14–38]	27 [17–42]	
	3000 Gt C	21 [13–32]	25 [17–36]	
	Lin. reg.	19 [12–25]	23 [15–33]	$r = 0.91 \pm 0.04$, $\hat{\sigma} = 39\%$
ΔAMOC (%)	1000 Gt C	−16 [−29 to −7]	−24 [−35 to −15]	
	2000 Gt C	−15 [−23 to −9]	−18 [−26 to −12]	
	3000 Gt C	−14 [−19 to −9]	−15 [−20 to −10]	
	Lin. reg.	−15 [−22 to −9]	−15 [−22 to −10]	$r = 0.8 \pm 0.1$, $\hat{\sigma} = 40\%$
ΔpH (1)	1000 Gt C	−0.19 [−0.22 to −0.15]	−0.20 [−0.23 to −0.18]	
	2000 Gt C	−0.18 [−0.21 to −0.16]	−0.18 [−0.21 to −0.15]	
	3000 Gt C	−0.17 [−0.19 to −0.15]	−0.17 [−0.19 to −0.15]	
	Lin. reg.	−0.18 [−0.20 to −0.16]	−0.17 [−0.19 to −0.15]	$r = 0.98 \pm 0.01$, $\hat{\sigma} = 12\%$
$\Delta\Omega_{\text{arag,S.O.}}$ (1)	1000 Gt C	−0.55 [−0.66 to −0.45]	−0.61 [−0.68 to −0.55]	
	2000 Gt C	−0.46 [−0.53 to −0.39]	−0.46 [−0.51 to −0.41]	
	3000 Gt C	−0.40 [−0.45 to −0.35]	−0.40 [−0.43 to −0.35]	
	Lin. reg.	−0.48 [−0.53 to −0.42]	−0.43 [−0.48 to −0.38]	$r = 0.87 \pm 0.05$, $\hat{\sigma} = 30\%$
$\Delta\Omega_{\text{arag,trop.}}$ (1)	1000 Gt C	−0.87 [−1.04 to −0.71]	−0.96 [−1.04 to −0.89]	
	2000 Gt C	−0.76 [−0.86 to −0.65]	−0.74 [−0.82 to −0.68]	
	3000 Gt C	−0.67 [−0.73 to −0.61]	−0.66 [−0.70 to −0.61]	
	Lin. reg.	−0.78 [−0.85 to −0.71]	−0.71 [−0.79 to −0.65]	$r = 0.93 \pm 0.03$, $\hat{\sigma} = 24\%$
$\Delta\text{C}_{\text{soil}}$ (Gt C)	1000 Gt C	−59 [−234 to +22]	−77 [−268 to −17]	
	2000 Gt C	−73 [−201 to −5]	−82 [−217 to −4]	
	3000 Gt C	−75 [−162 to −17]	−80 [−170 to −15]	
	Lin. reg.	−26 [−85 to +24]	−39 [−122 to +25]	$r = 0.7^{+0.1}_{-0.7}$, $\hat{\sigma} = 165\%$

Table 3. Inverse values of TCPRE TRE^X and $\text{TCPRE TRE}_{\text{peak}}^X$ for the different climate parameters/variables. The values are determined at 1000 Gt C total and fossil-fuel CO₂ emissions, respectively, and are given for the 68% and 90% percentiles of the cumulative probability distribution. Under the assumption of linearity, the allowable emissions to meet a given target with 68% or 90% probability can be estimated by multiplying the corresponding value in the table with the target value of the climate parameter/variable. ΔC_{soil} is omitted in this table due to its non-linear response and large uncertainty.

Variable	Units	Total emissions		Fossil-fuel emissions	
		$P = 68\%$	$P = 90\%$	$P = 68\%$	$P = 90\%$
$[\text{TRE}^{\Delta \text{SAT}}]^{-1}$	Gt C/°C	402	245	360	219
$[\text{TRE}_{\text{peak}}^{\Delta \text{SAT}}]^{-1}$		351	215	315	194
$[\text{TRE}^{\Delta \text{SST}}]^{-1}$	Gt C/°C	532	329	479	296
$[\text{TRE}_{\text{peak}}^{\Delta \text{SST}}]^{-1}$		479	294	426	262
$[\text{TRE}^{\Delta \text{SSLR}}]^{-1}$	Gt C/cm	31.2	19.6	27.8	17.2
$[\text{TRE}_{\text{peak}}^{\Delta \text{SSLR}}]^{-1}$		27.8	17.9	25.6	16.1
$[\text{TRE}^{\Delta \text{AMOC}}]^{-1}$	Gt C/%	-46.6	-30.3	-42.3	-27.9
$[\text{TRE}_{\text{peak}}^{\Delta \text{AMOC}}]^{-1}$		-35.3	-25.1	-33.4	-23.8
$[\text{TRE}^{\Delta \text{pH}}]^{-1}$	Gt C	-5000	-4348	-4348	-3846
$[\text{TRE}_{\text{peak}}^{\Delta \text{pH}}]^{-1}$		-4545	-4000	-4348	-3704
$[\text{TRE}^{\Delta \Omega_{\text{arag}, \text{s.o.}}}]^{-1}$	Gt C	-1667	-1449	-1515	-1316
$[\text{TRE}_{\text{peak}}^{\Delta \Omega_{\text{arag}, \text{s.o.}}}]^{-1}$		-1563	-1429	-1471	-1333
$[\text{TRE}^{\Delta \Omega_{\text{arag}, \text{trop.}}}]^{-1}$	Gt C	-1042	-926	-935	-840
$[\text{TRE}_{\text{peak}}^{\Delta \Omega_{\text{arag}, \text{trop.}}}]^{-1}$		-1010	-926	-943	-870

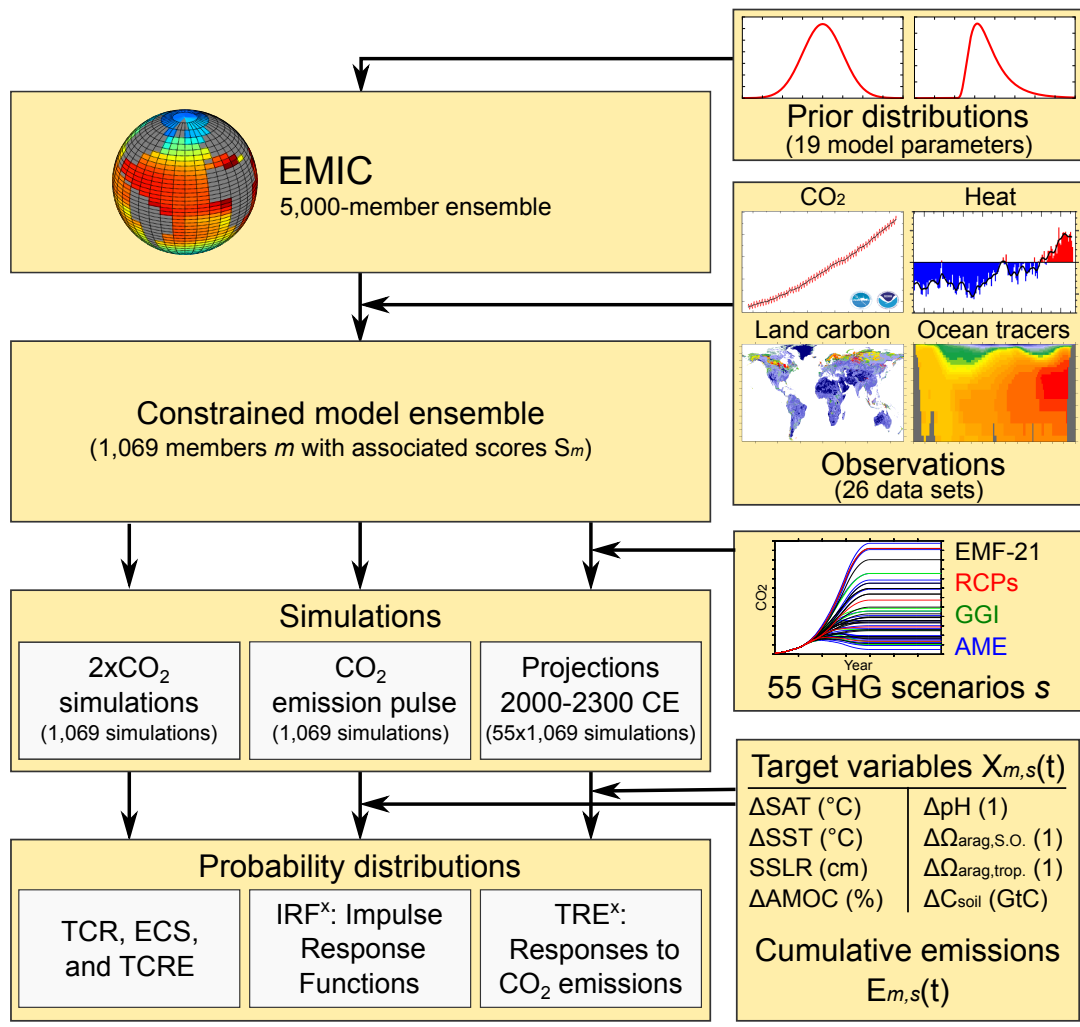


Figure 1. Flowchart illustrating the applied methodology. First, an ensemble of model configurations is generated from prior distributions of model parameters. Then the ensemble is constrained by 26 observational data sets by calculating a skill score (S_m) for each ensemble member (m). In the next step, the constrained model ensemble is run into the future under multiple greenhouse gas scenarios (s) as well as for idealized 2xCO₂ and CO₂ emission pulse simulations. Finally, probability distributions are calculated from these simulations for TCR, ECS, and TCRC as well as for TCPRETRE^X and IRF^X and different climate parameters/variables, X .

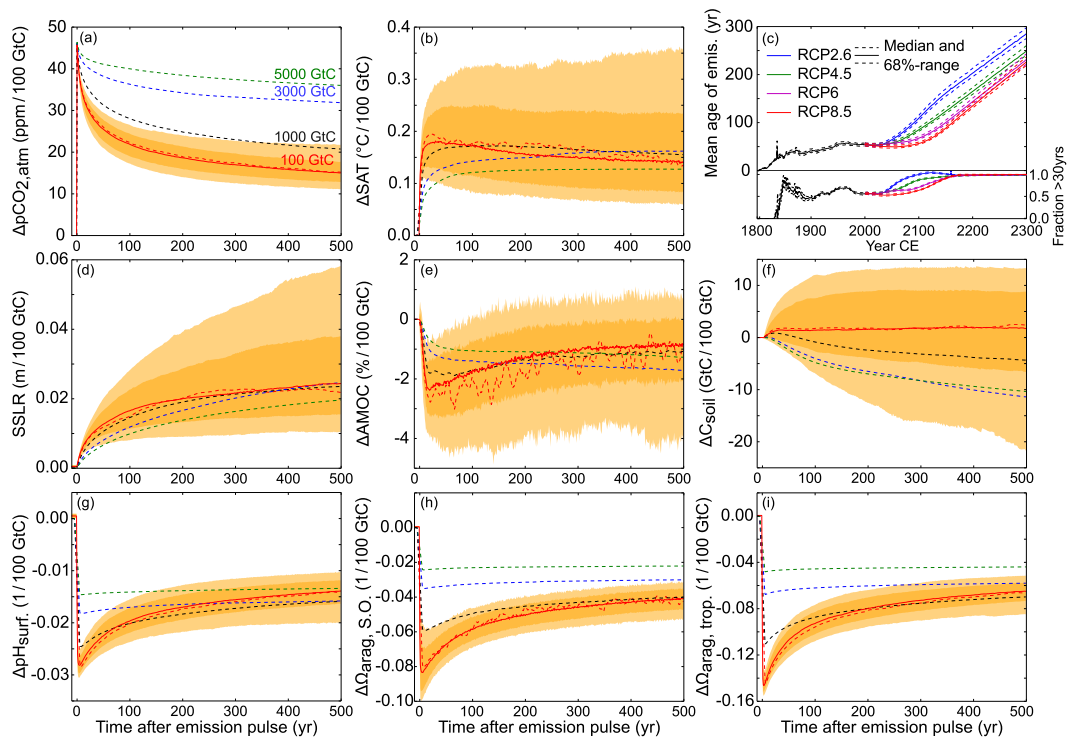


Figure 2. Response to an emission pulse of 100 GtC added to an atmospheric concentration of 389 ppm. Ensemble median (solid red line) and 68/90% ranges (dark/light orange) of changes in **(a)** atmospheric CO₂, **(b)** surface air temperature, **(d)** steric sea level rise, **(e)** Atlantic meridional overturning circulation, **(f)** global soil carbon stocks, **(g)** global mean surface ocean pH, **(h)** southern and **(i)** tropical ocean surface aragonite saturation are shown. The dashed lines show the response (per 100 GtC) for median parameters and pulse sizes of 100 (red), 1000 (black), 3000 (blue), and 5000 GtC (green). **(c)** shows the mean age of past emissions over the historical period and for the four RCP scenarios (left axis), and the fraction of the emissions older than 30 years (right axis) versus calendar years. More than half of the emissions are older than ~30 years. The bulk of the emissions at any calendar year is thus in the age range (x-axis in the other panels) where the pulse response function varies within a limited range for surface air temperature (b), surface pH (g) steric sea level rise (d) and Atlantic meridional overturning (e). This implies an approximately linear relationship between cumulative emissions and responses in these variables.

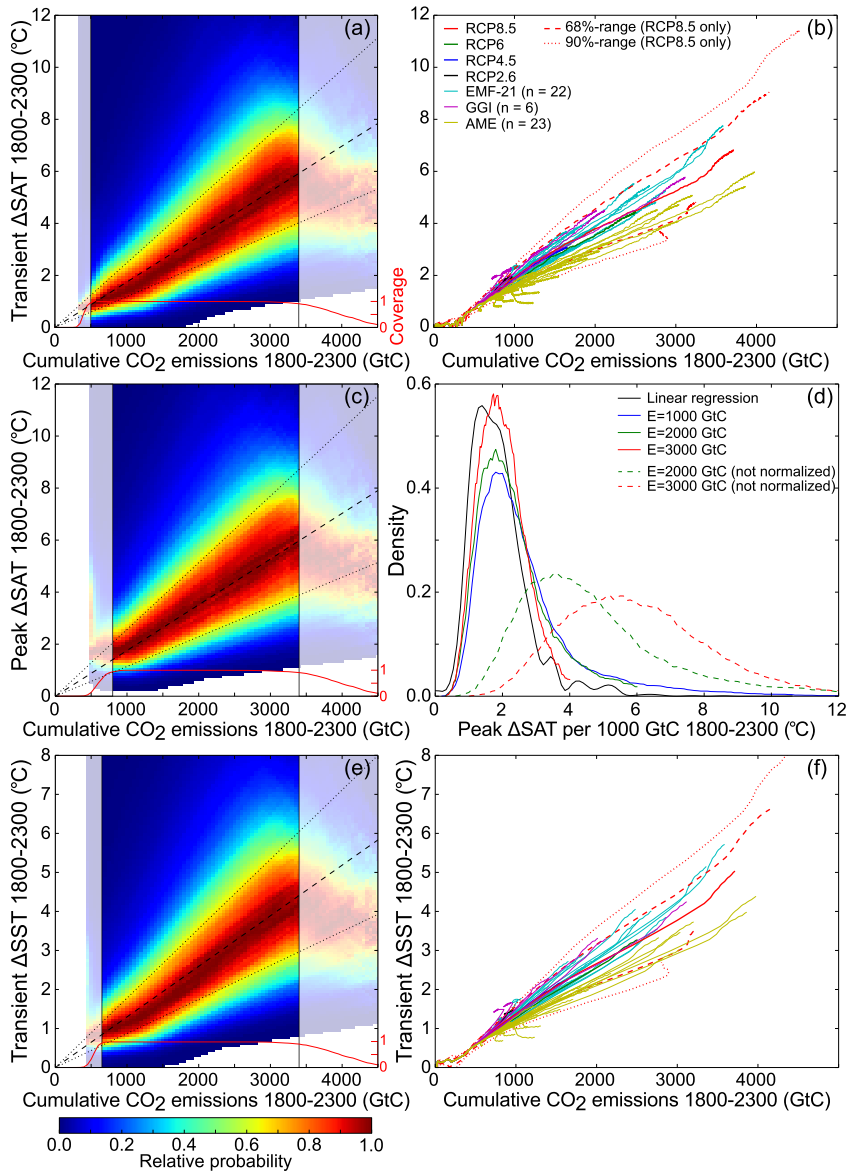


Figure 3. Transient and peak warming as function of cumulative emissions: **(a)** relative probability of transient surface air temperature change (ΔSAT) for given cumulative CO_2 emissions (fossil fuel and deforestation), derived from annual values from ensemble model simulations for 55 greenhouse-gas emission scenarios. Black dashed lines show the median and 68 %-range of the linear regression slope. The red line indicates the coverage of the emission range by the model ensemble. High and low emission ranges with a coverage of less than 90 % are shaded and considered not robust. **(b)** Transient ΔSAT response (ensemble median) for the 55 different scenarios. The dashed/dotted lines show the 68/90 %-range of the ensemble for the RCP8.5 scenario, to indicate the model-spread. **Please note** that our extensions of the RCP scenarios beyond 2100 are not identical to the Extended Concentration Pathways (ECP, see Methods). **(c)** Same as **(a)** but for the peak warming for given total cumulative emissions. **(d)** PDFs of the peak warming for 1000 (blue), 2000 (green), and 3000 Gt C (red) cumulative emissions, and for the linear regression (black). The dashed lines indicate the unscaled PDFs and solid lines the normalized response per 1000 Gt C. **(e, f)** Same as **(a, b)** but for transient sea surface temperature change (ΔSST).

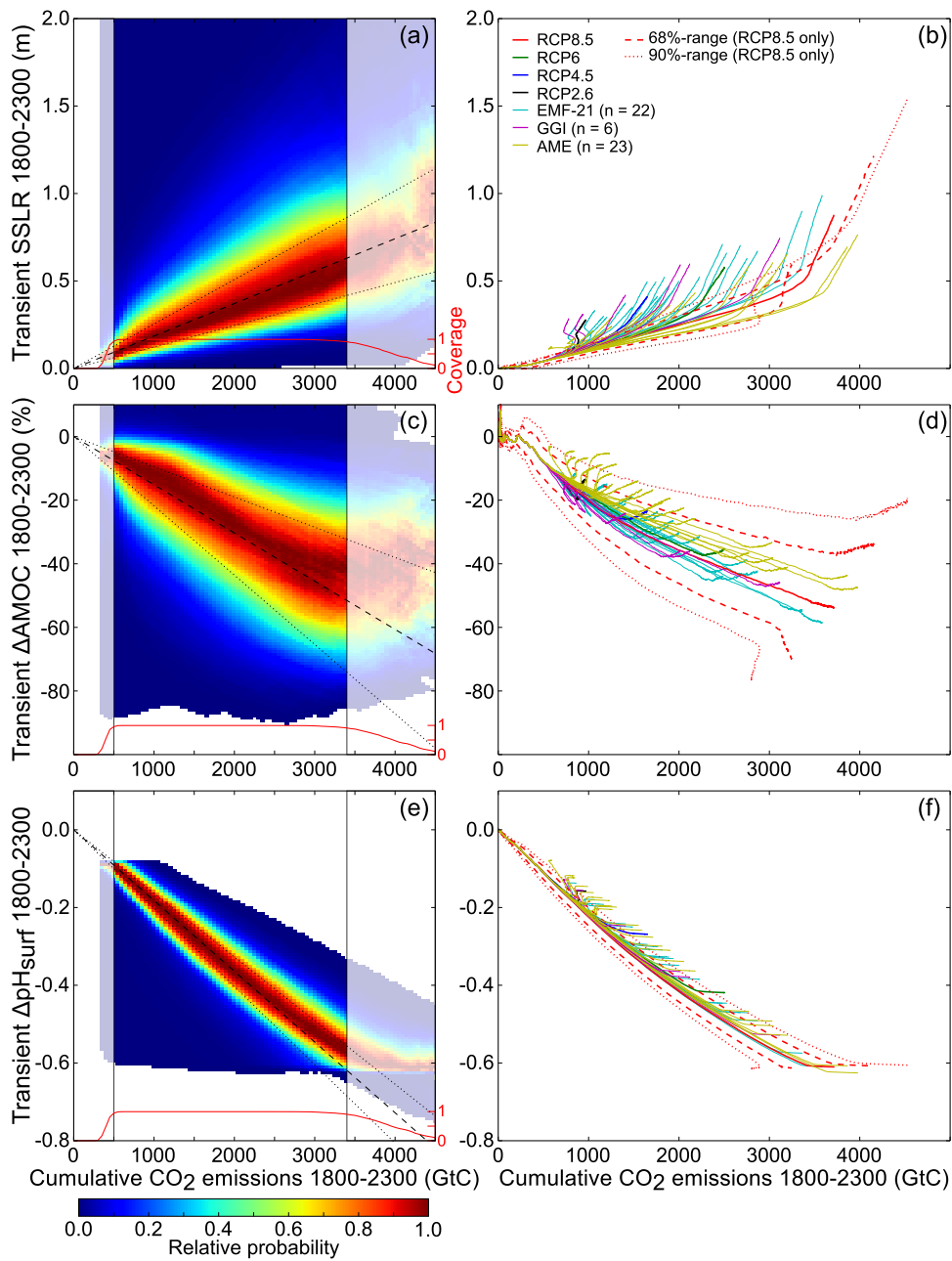


Figure 4. Response of SSLR, AMOC, and pH to cumulative CO₂ emissions (including deforestation), similar to Fig. 3a and b.

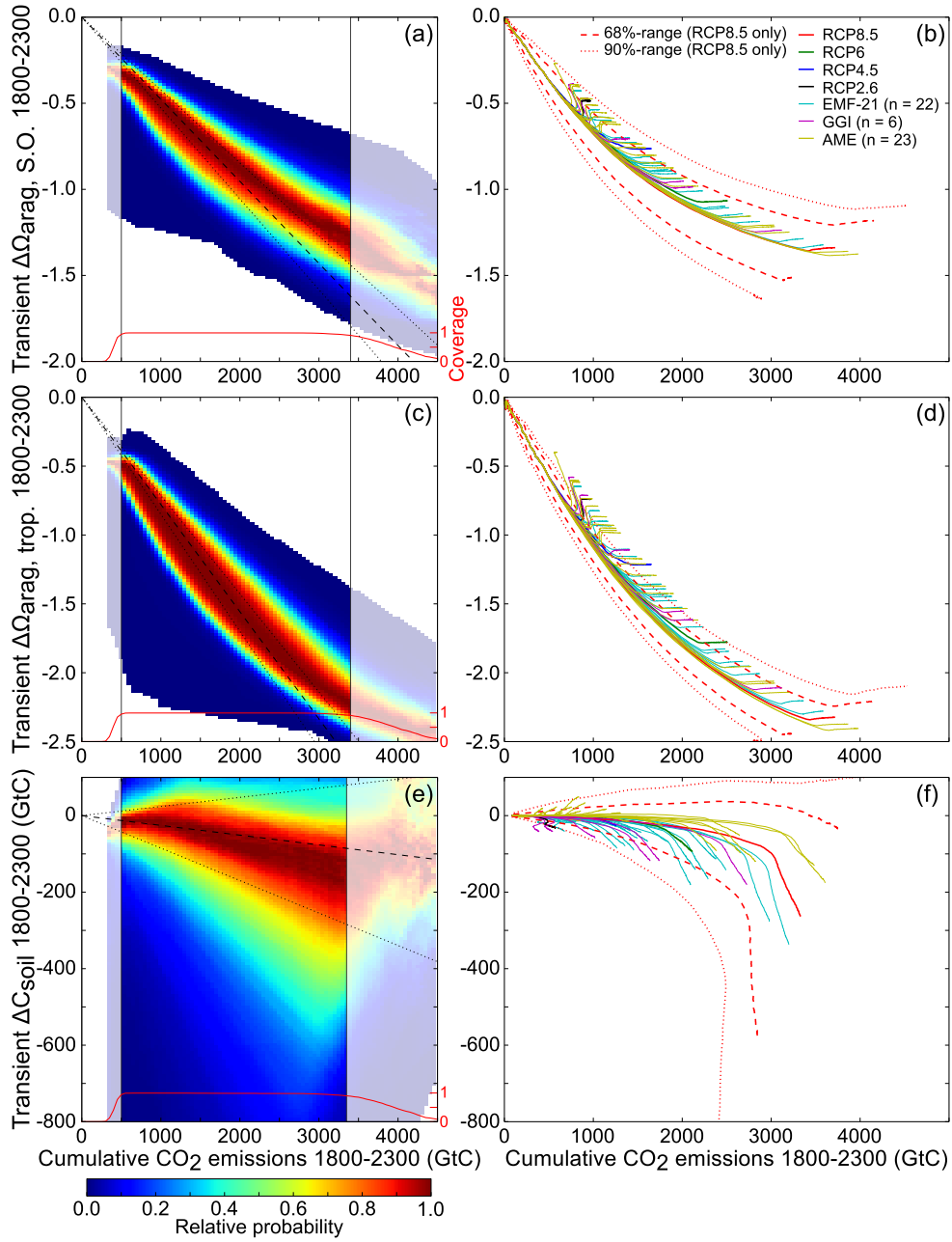


Figure 5. Same as Fig. 4 but for the transient response in surface aragonite saturation state in the Southern Ocean and in the tropics, and in global soil carbon stocks.

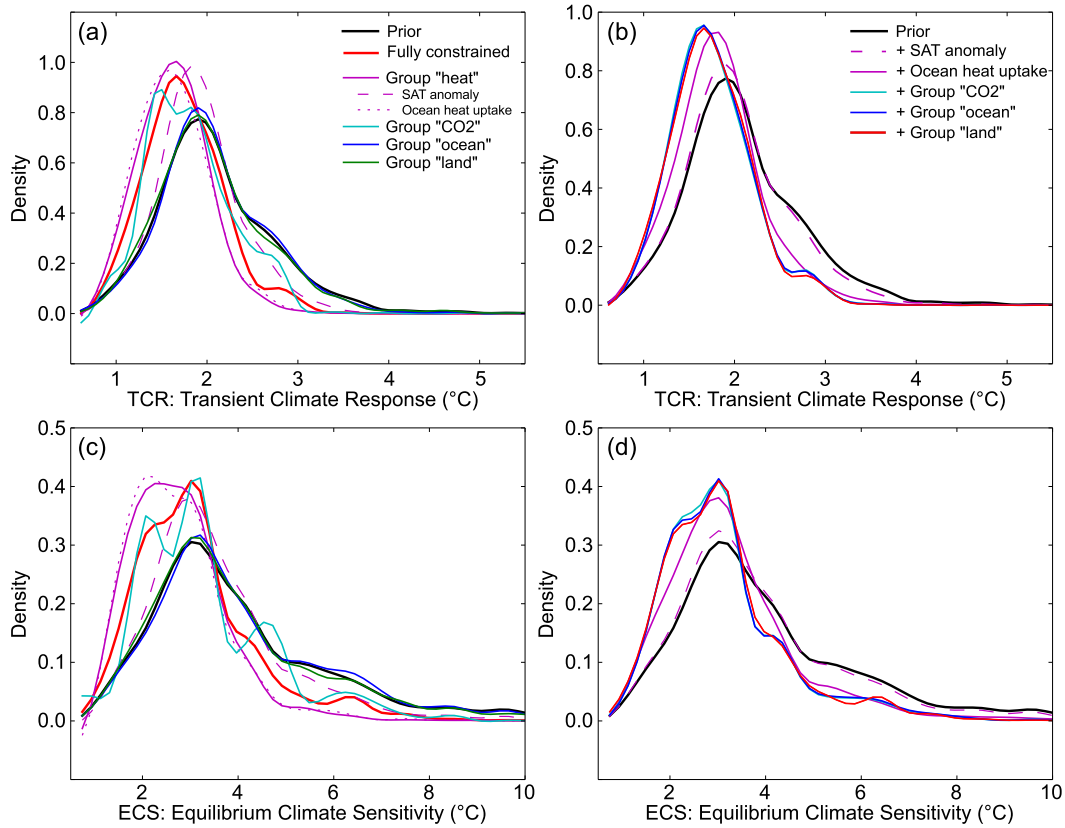


Figure 6. PDFs of transient climate response (**a**, **b**) and equilibrium climate sensitivity (**c**, **d**) derived from the model ensemble and for different observation-based constraints. In (**a** and **c**) the PDFs are shown for the ensemble without constraints (prior, black line), for the case when each of the constraint groups “heat” (magenta), “CO₂” (cyan), “ocean” (blue), and “land” (green) is applied alone with equal weights, and for all constraints (red). The group “heat” is split up further into SAT anomaly (dashed magenta) and ocean heat uptake observations (dotted magenta). In (**b** and **d**) the constraints are added sequentially with their corresponding weights in the full constraint in the following order: SAT anomaly (magenta dashed), ocean heat uptake (magenta solid), CO₂ (cyan), ocean (blue), and land (red, corresponding to the full constraint).

Table A1. Sampled model parameters with plausible ranges based on literature and/or expert judgment (p_{\min} , p_{\max}). Normal prior distributions $N(x; p_{\text{std}}, \sigma) = \frac{1}{(\sqrt{2\pi}\sigma)} \exp(-\frac{(x-p_{\text{std}})^2}{2\sigma^2})$ with $\sigma = \frac{p_{\max}-p_{\min}}{4}$ are chosen for ranges that are basically symmetric with respect to the standard parameter value (p_{std}). Log-normal priors $L(x; p_{\text{std}}, s, l) = \frac{1}{(\sqrt{2\pi}s(x-l))} \exp(-\frac{(\ln(x-l)-\ln(p_{\text{std}}-l))^2}{2s^2})$ are used for asymmetric ranges, with s and l chosen such that the median of the distribution matches p_{std} and the standard-deviation σ is $\frac{1}{4}$ of the parameter range, as for the normal distribution.

Parameter	Description	p_{std}	p_{\min}	p_{\max}	Prior	Refs.
α_a	Photosynthesis scaling parameter (leaf to canopy)	0.5	0.3	0.7	$N(p_{\text{std}}, \sigma)$	Zaehle et al. (2005); Haxeltine and Prentice (1996)
α_{C_3}	Intrinsic quantum efficiency of CO ₂ uptake (C ₃ plants)	0.08	0.02	0.125	$N(p_{\text{std}}, \sigma)$	Zaehle et al. (2005); Farquhar et al. (1980); Hallgren and Pitman (2000)
$\theta^* = 1 - \theta$	Co-limitation shape parameter (light vs. Rubisco act.)	0.3	0.004	0.8	$L(p_{\text{std}}, 0.54, 0)$	Zaehle et al. (2005); Collaty et al. (1990); Leverenz (1988)
g_m	Max. canopy conductance	3.26	2.5	18.5	$L(p_{\text{std}}, 1.05, 1.5)$	Zaehle et al. (2005); Magnani et al. (1998)
τ_{sapwood}	Sapwood to heartwood turnover (yr)	20	5	100	$L(p_{\text{std}}, 0.76, 0)$	Zaehle et al. (2005); Bartelink (1998)
mort_{max}	Asymptotic maximum mortality rate (yr^{-1})	0.01	0.005	0.1	$L(p_{\text{std}}, 1.19, 0)$	Zaehle et al. (2005)
$\text{respo}_{10, \text{eq}}$	Temp. sensitivity of respiration and soil decomp.	2.4	1.3	3.3	$N(p_{\text{std}}, \sigma)$	Lloyd and Taylor (1994); Raich and Schlesinger (1992)
$k_{\text{soil, scale}}$	Scaling factor for SOM decomp. rates at 10 °C	1.0	0.5	2.0	$L(p_{\text{std}}, 0.41, 0.2)$	Trumbore (2000)
f_{soil}	Fraction of decomp. litter entering soil pools (%)	40	20	60	$N(p_{\text{std}}, \sigma)$	Zaehle et al. (2005); Jenkinson (1990)
f_{slow}	Fraction of soil-bound litter entering slow soil pool (%)	1.5	1.0	15	$L(p_{\text{std}}, 1.05, 0)$	Zaehle et al. (2005); Kergoat (1998)
$C_{\text{peat, scale}}$	Initial soil carbon in NH peatlands (Gt C)	420	190	650	$N(p_{\text{std}}, \sigma)$	Tarnocai et al. (2009)
CS	Nominal equilibrium climate sensitivity (°C)	3	1	10	$L(p_{\text{std}}, 0.58, 0)$	Knutti et al. (2003); Meinshausen et al. (2009)
$\text{diff}_{\text{zonal}}$	Zonal atmospheric eddy-diffusivity ($10^6 \text{ m}^2 \text{ s}^{-1}$)	1.0	0.1	10	$L(p_{\text{std}}, 1.06, 0)$	Ritz et al. (2011a)
$\text{diff}_{\text{merid, scale}}$	Scaling factor for meridional atm. eddy-diffusivity	1.0	0.5	2.0	$L(p_{\text{std}}, 0.34, 0)$	Ritz et al. (2011a)
diff_{dia}	Ocean diapycnal diffusivity ($10^{-5} \text{ m}^2 \text{ s}^{-1}$)	1.0	0.2	20	$L(p_{\text{std}}, 1.35, 0)$	Edwards and Marsh (2005); Meinshausen et al. (2009)
diff_{iso}	Ocean isopycnal diffusivity ($\text{m}^2 \text{ s}^{-1}$)	1,000	300	9,000	$L(p_{\text{std}}, 1.01, 0)$	Edwards and Marsh (2005); Huang et al. (2003)
$k_{\text{gas, scale}}$	Scaling factor for standard OCMIP gas transfer velocity	0.81	0.65	0.97	$N(p_{\text{std}}, \sigma)$	Müller et al. (2008)
$\text{RF}_{\text{GHG, scale}}$	Scaling factor for total RF from well mixed GHG	1.0	0.92	1.12	$L(p_{\text{std}}, 0.17, 0.7)$	Forster et al. (2007)
$\text{RF}_{\text{aerosol, scale}}$	Scaling factor for total aerosol RF	1.0	0.5	2.0	$L(p_{\text{std}}, 0.35, 0)$	Forster et al. (2007)

Table A2. Same as Table 2, but for fossil-fuel CO₂ emissions only. I.e. the gross emissions from deforestation are not included when regressing the responses against cumulative CO₂ emissions (see Methods).

Variable X	Method	TRE ^{X}	TRE ^{X} _{peak}	Goodness of linear fit
Δ SAT (°C)	1000 Gt C	2.17 [1.25–3.79]	2.56 [1.64–4.25]	
	2000 Gt C	2.12 [1.36–3.32]	2.26 [1.47–3.47]	
	3000 Gt C	1.94 [1.33–2.68]	1.96 [1.34–2.70]	
	Lin. reg.	1.88 [1.28–2.69]	1.87 [1.22–2.78]	$r = 0.91 \pm 0.04$, $\hat{\sigma} = 35\%$
Δ SST (°C)	1000 Gt C	1.62 [0.98–2.70]	1.86 [1.22–3.01]	
	2000 Gt C	1.50 [1.00–2.19]	1.58 [1.06–2.25]	
	3000 Gt C	1.33 [0.95–1.72]	1.35 [0.94–1.73]	
	Lin. reg.	1.38 [0.95–1.93]	1.39 [0.91–2.00]	$r = 0.91 \pm 0.04$, $\hat{\sigma} = 35\%$
SSLR (cm)	1000 Gt C	29 [16–49]	32 [19–52]	
	2000 Gt C	24 [15–40]	29 [19–45]	
	3000 Gt C	22 [14–33]	26 [18–37]	
	Lin. reg.	20 [13–27]	25 [16–35]	$r = 0.90 \pm 0.04$, $\hat{\sigma} = 36\%$
Δ AMOC (%)	1000 Gt C	−18 [−31 to −8]	−25 [−37 to −16]	
	2000 Gt C	−16 [−24 to −10]	−19 [−27 to −12]	
	3000 Gt C	−14 [−20 to −9]	−15 [−20 to −11]	
	Lin. reg.	−16 [−23 to −10]	−16 [−24 to −10]	$r = 0.8^{+0.1}_{-0.2}$, $\hat{\sigma} = 41\%$
Δ pH (1)	1000 Gt C	−0.21 [−0.25 to −0.18]	−0.22 [−0.25 to −0.20]	
	2000 Gt C	−0.19 [−0.22 to −0.17]	−0.19 [−0.22 to −0.17]	
	3000 Gt C	−0.18 [−0.19 to −0.16]	−0.17 [−0.19 to −0.16]	
	Lin. reg.	−0.19 [−0.22 to −0.18]	−0.18 [−0.20 to −0.16]	$r = 0.97 \pm 0.01$, $\hat{\sigma} = 17\%$
$\Delta\Omega_{\text{arag,S.O.}}$ (1)	1000 Gt C	−0.61 [−0.73 to −0.50]	−0.65 [−0.73 to −0.59]	
	2000 Gt C	−0.48 [−0.56 to −0.41]	−0.48 [−0.53 to −0.43]	
	3000 Gt C	−0.41 [−0.46 to −0.36]	−0.41 [−0.45 to −0.37]	
	Lin. reg.	−0.51 [−0.56 to −0.46]	−0.46 [−0.52 to −0.41]	$r = 0.80 \pm 0.04$, $\hat{\sigma} = 35\%$
$\Delta\Omega_{\text{arag, trop.}}$ (1)	1000 Gt C	−0.98 [−1.15 to −0.81]	−1.02 [−1.11 to −0.94]	
	2000 Gt C	−0.80 [−0.90 to −0.70]	−0.78 [−0.85 to −0.72]	
	3000 Gt C	−0.70 [−0.74 to −0.64]	−0.68 [−0.72 to −0.64]	
	Lin. reg.	−0.84 [−0.91 to −0.77]	−0.76 [−0.84 to −0.69]	$r = 0.89 \pm 0.03$, $\hat{\sigma} = 28\%$
ΔC_{soil} (Gt C)	1000 Gt C	−66 [−260 to +25]	−81 [−288 to +24]	
	2000 Gt C	−80 [−212 to −9]	−89 [−228 to −9]	
	3000 Gt C	−74 [−154 to −17]	−80 [−163 to −16]	
	Lin. reg.	−28 [−91 to +26]	−42 [−132 to +27]	$r = 0.7^{+0.1}_{-0.7}$, $\hat{\sigma} = 158\%$

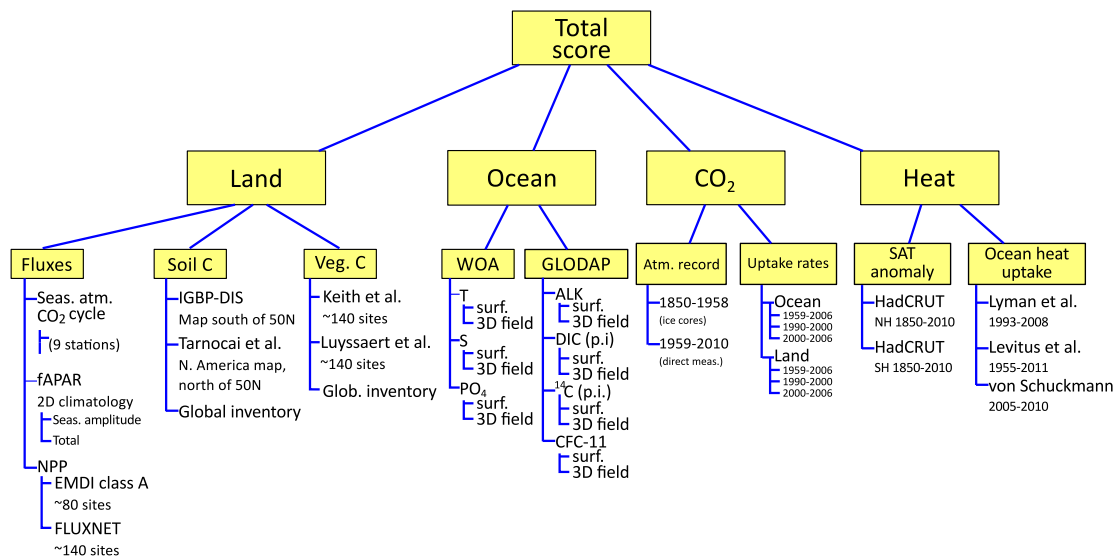


Figure A1. Observation-based data sets used to constrain the model ensemble. The data sets are organized in a hierarchical structure to balance the weight of individual data sets and model skill scores are aggregated by averaging over the group of constraints at the same level in the hierarchy (Steinacher et al., 2013).

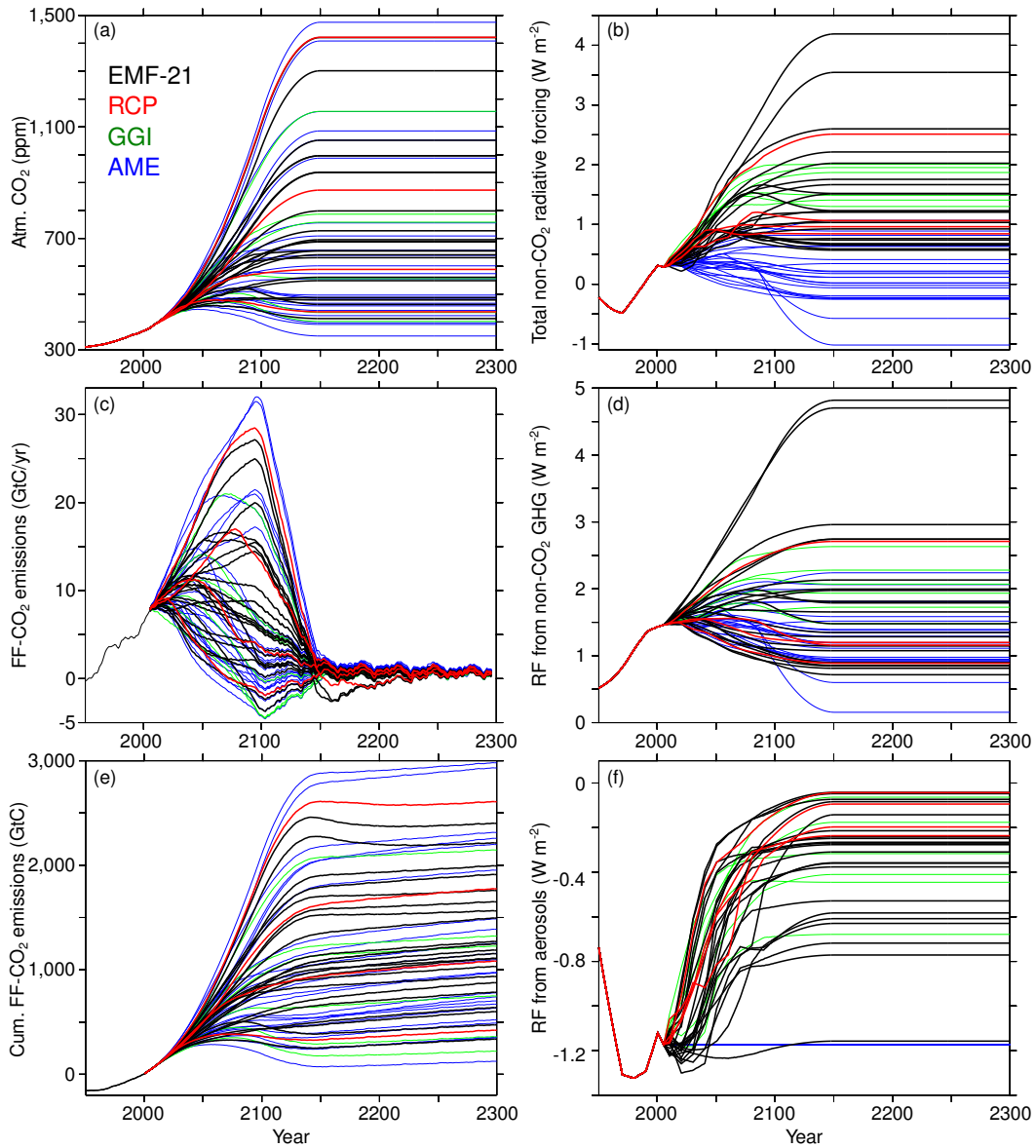


Figure A2. Time series of (a) atmospheric CO₂ and (b) total non-CO₂ radiative forcing prescribed in the scenario simulations. The forcings are derived from 22 EMF-21 (black), 4 RCPs (red), 6 GGI (green), and 23 AME (blue) scenarios. After 2100 the scenarios are extended to 2300 by stabilizing CO₂ concentrations and non-CO₂ radiative forcing by 2150. The total non-CO₂ radiative forcing is the sum of the forcing from (d) non-CO₂ greenhouse gases and (f) aerosols. **Please note** that for the AME scenarios the aerosol forcing is kept constant after 2005 because no aerosol emission paths are available for this scenarios. (c) Annual and (e) cumulative fossil-fuel CO₂ emissions diagnosed with the standard model parameter settings are shown for reference. The annual emissions are smoothed with a 10-year moving average filter. The cumulative emissions are given relative to the year 2000.

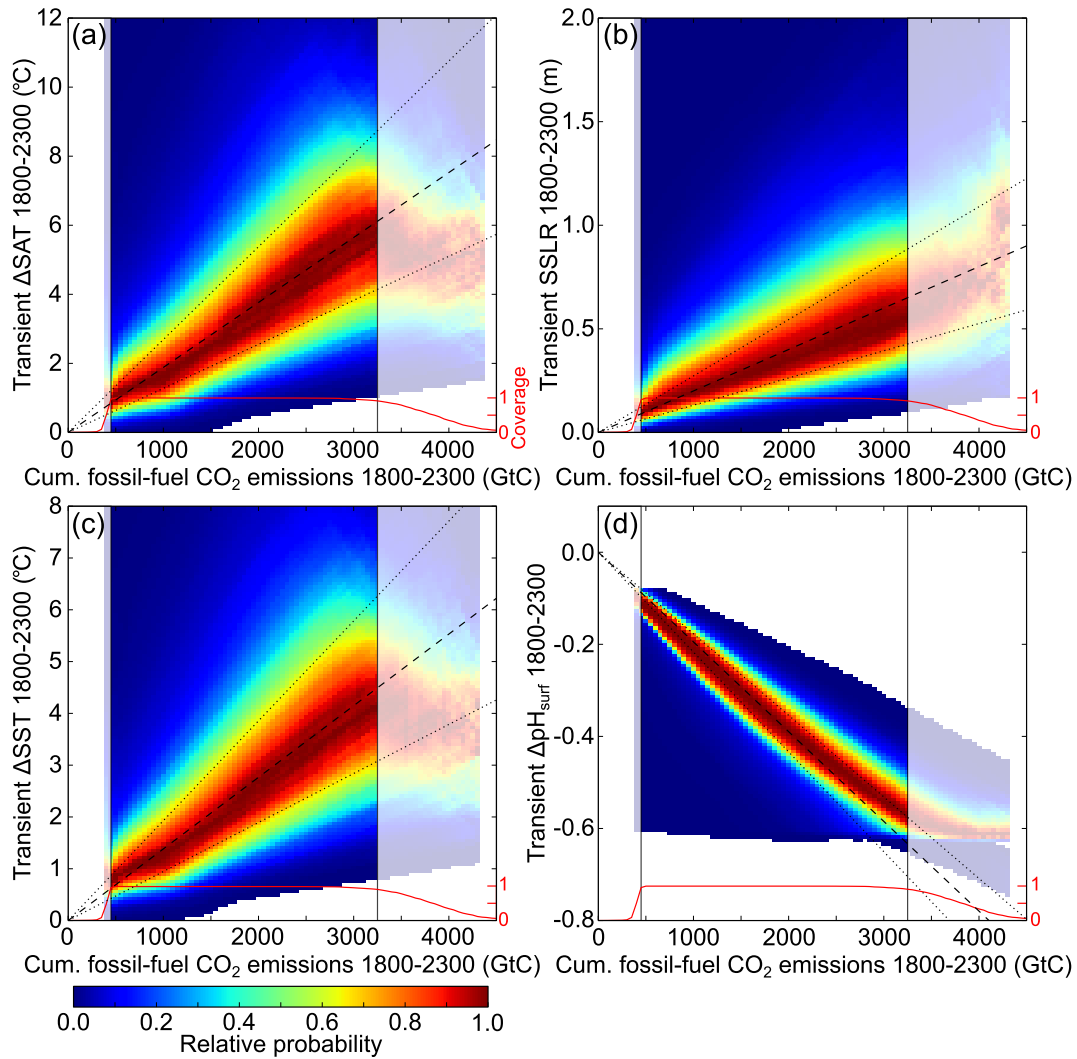


Figure A3. Response as function of fossil-fuel CO₂ emissions: **(a)** same as Fig. 3a but for cumulative fossil-fuel emissions only, i.e. CO₂ emissions from deforestation are not included in this figure (see methods). **(b–d)** Same as **(a)** but for the transient steric sea level rise (SSLR), sea surface temperature change (ΔSST), and global annual mean surface ocean pH (ΔpH_{surf}). The response of the remaining variables to fossil-fuel only CO₂ emissions are given in Table A2.