

Vertical mixing alleviates autumnal oxygen deficiency in the central North Sea

Charlotte A. J. Williams¹, Tom Hull², ~~Matthew R. Palmer~~³ ~~Jan Kaiser~~³, Claire Mahaffey⁴, Naomi Greenwood², ~~Jan Kaiser~~⁵, ~~Matthew Toberman~~⁵ and Matthew ~~Toberman~~⁶ ~~R. Palmer~~⁶

¹National Oceanography Centre, Liverpool, L3 5DA, UK

²Centre for Environment, Fisheries and Aquaculture Science, Lowestoft, NR33 0HT, UK

~~³Plymouth Marine Laboratory, Plymouth, PL1 3DH, UK~~

~~³University of East Anglia, Norwich, NR4 7TJ, UK~~

⁴Department of Earth, Ocean and Ecological Sciences, University of Liverpool, L69 3GP, UK

~~⁵University of East Anglia, Norwich, NR4 7TJ, UK~~

~~⁶Scottish³Scottish Association for Marine Science, Oban, Scotland, PA37 1QA, UK~~

~~⁶Plymouth Marine Laboratory, Plymouth, PL1 3DH, UK~~

Correspondence to: Charlotte A. J. Williams (chwill@noc.ac.uk)

Abstract. There is an immediate need to better understand and monitor shelf sea dissolved oxygen (O₂) concentrations. Here we use high-resolution glider observations of turbulence and O₂ concentrations to directly estimate the vertical O₂ flux into the bottom mixed layer (BML) immediately before the autumn breakdown of stratification in a seasonally stratified shelf sea. We present a novel method to resolve the oxycline across sharp gradients due to slow optode response time and optode positioning in a flow "shadow zone" on Slocum gliders. The vertical O₂ flux to the low-O₂ BML was found to be between 2.35 to 6.4 mmol m⁻² d⁻¹. Episodic intense mixing events were responsible for the majority (up to 90 %) of this oxygen supply despite making up 40 % of the observations. Without these intense mixing events, BML O₂ concentrations would approach ecologically concerning levels by the end of the stratified period. Understanding the driving forces behind episodic mixing and how these may change under future climate scenarios and renewable energy infrastructure is key for monitoring shelf sea health.

1. Introduction

The global ocean is losing oxygen (Gilbert, 2017 et al., 2010; Schmidtko et al., 2017), and the risk of deoxygenation in the productive coastal and shelf sea regions is increasing (Wakelin et al. 2020, Mahaffey et al., 2023). Oxygen decline and deficiency are already evident in several shelf seas (Grantham et al., 2004; Diaz & Rosenberg, 2008; Gilbert et al., 2010; Greenwood et al., 2010; Queste et al., 2013, Mahaffey et al., 2023) with recent model studies (NEMO-ERSEM, Butenschön et al., 2016) estimating that large regions of the Northwest European continental shelf seas (325 000 to 400 000 km²) have the potential to become seasonally deficient in dissolved oxygen (O₂) in late summer (Ciavatta et al., 2016) and in future climate scenarios (Wakelin et al., 2020). Although hypoxia (defined as O₂ mass concentrations below 2 mg L⁻¹) is never reached in UK shelf sea waters, O₂ deficiency (< 6 mg L⁻¹; OSPAR, 2013) is still lethal for some fish and molluscs (Vanquer-Sunyer & Duarte, 2008). The shelf seas around the UK are worth an approximate £47 billion per year (in terms of gross value added (GVA); Foresight Future of the Sea Report, 2018), with commercial fishing being a vital contributor. The increasing threat of oxygen deficiency could have serious economical as well as environmental impacts.

Formatted: Line spacing: single

Formatted: Superscript

Formatted: Line spacing: single

Formatted: Line spacing: single, Don't keep with next

Commented [JK1]: Commas (or points) should not be used to separate numbers. Use (thin) spaces instead. See SI Brochure.

40 In shelf seas, the surface mixed layer (SML) is well-oxygenated due to air-sea gas exchange and net biological
production of oxygen. However, the shelf sea thermocline acts as a physical barrier between the oxygenated, nutrient-deplete
productive SML and the dark, nutrient-rich bottom mixed layer (BML) (Sharples et al., 2001, Mahaffey et al., 2023). In the
BML, net O₂ removal can occur as a result of restricted ventilation due to seasonal thermal stratification, oxygen
consumption via pelagic and benthic respiration of organic matter and nitrification. An important mechanism in sustaining
45 high productivity in shelf seas is the diapycnal upward mixing of nutrients across the base of the thermocline barrier
(Sharples et al., 2007; Rippeth, 2005; Rippeth et al., 2014; Williams et al., 2013a; Davis et al., 2014; Brandt et al., 2015).
There is also potential for diapycnal mixing to help alleviate O₂ deficiency in the BML by providing a downward turbulent
flux of O₂ across the thermocline (Queste et al., 2016; Rovelli et al., 2016; Williams et al., 2022). Diapycnal mixing is driven
by the barotropic tide, internal waves and wind-driven inertial oscillations (Burchard and Rippeth, 2009; Sharples et al.,
50 2007; Inall et al., 2000; Williams et al., 2013b), with the fluxes of nutrients and oxygen across the thermocline being
dominated by episodic mixing events driven by these processes (Sharples et al., 2007; Williams et al., 2013a; 2013b).

Future shelf sea scenarios indicate earlier onset of stratification, prolonged periods of stratification and stronger
thermocline stability (Holt et al., 2022; Sharples et al., 2013; Lowe et al., 2009; Meire et al., 2013), all of which will affect
BML ventilation, O₂ dynamics and ecosystem health (Wakelin et al., 2020). To enable effective water quality and ecosystem
management, as well as to assess the impact of the changing climate and increasing renewable energy infrastructure on our
55 shelf seas, it is imperative to gather sufficient O₂-related data at high spatio-temporal resolution alongside hydrographic
measurements to determine trends in dissolved O₂ concentrations in our shelf seas. However, O₂ concentration
measurements are seasonally and/or spatially limited in vast regions of UK shelf seas (Große et al., 2016, Mahaffey et al.
2023). The use of oxygen optodes on marine autonomous vehicles, including gliders, has greatly amplified the number of
60 oceanic O₂ measurements in coastal and shelf seas available for ecosystem assessment (Mahaffey et al., 2023; Williams et
al., 2022; Queste et al., 2016). Gliders can also quantify oceanic turbulence with microstructure shear probes.

In this study, we present glider-based high-resolution O₂ concentration and turbulence dissipation rate
measurements immediately before the autumn breakdown of stratification in the North Sea. These measurements were
carried out as part of the ~~AlterECO~~AlterEco ("An Alternative Framework to Assess Marine Ecosystem Functioning in Shelf
65 Seas") project, which relied on gliders alone to monitor ecosystem functioning continuously over 17 months. Using this
dataset, we were able to quantify and assess the diapycnal O₂ flux between SML and BML using co-located measurements
of both O₂ concentration, *C*(O₂), and turbulence dissipation rate, and demonstrate the importance of diapycnal mixing in the
alleviation of oxygen deficiency at the end of the stratified period in autumn.

2. Materials and Methods

2.1 Glider specifications and deployment

70 The ~~AlterECO~~AlterEco project was a 17-month long continuous glider sampling campaign in the seasonally
stratified North Sea. One of the aims of ~~AlterECO~~AlterEco was to demonstrate the feasibility of monitoring the health of the
marine ecosystem using only gliders deployed from small boats within 50 miles of the coast. Once deployed, gliders were
piloted to the sampling site in the Central North Sea (Fig. 1). A single Slocum glider (Teledyne Webb Research, Falmouth,
75 USA) from the Marine Autonomous and Robotic Systems group at the National Oceanography Centre (~~"Kelvin",~~ unit 444),
called "Kelvin") was deployed during late ~~stratification~~autumn (September to November 2018) to measure and quantify the
vertical oxygen flux. ~~Kelvin just before the breakdown of stratification.~~ Glider "Kelvin" was deployed on 28 September 2018
from RV Princess Royal at 55.38° N, 0.51° W, and took approximately 9 days to reach the ~~AlterECO~~AlterEco study site at
56.2° N, 2° E (Fig. 1). Here, glider "Kelvin" was instructed to conduct virtual mooring dives from 18 October until 9
80 November (22 days), and then piloted back near shore for recovery on 2 December. A 'virtual mooring' is a glider flight
pattern where the glider does not head towards a new waypoint, it attempts to hold a geographic position by turning back to
its origin after each dive.

Glider "Kelvin" was equipped with a MicroRider microstructure package (Rockland Scientific International) to
measure turbulent shear stress (see Palmer et al., 2015 for full details), a Seabird SBE42 CTD sensor to measure
85 temperature, salinity, and pressure, and an Aanderaa 4831 oxygen optode to measure *C*(O₂). Measurements were taken
within 15 m of the bed and 5 m of the surface on most dives, with each dive taking about 20 minutes. The reason for

Formatted: Line spacing: single

Commented [JK2]: Quantity symbols should always be in italics.

cautious piloting away from the seabed was to protect the delicate probes on the MicroRider in an area known to host many banks and changing bathymetry.

Glider salinity data ~~was~~ were corrected for thermal inertia following Palmer et al. (2015). The glider AA4831 optode displays relatively long lag times (of the order of tens of seconds) and the positioning of the oxygen optode in a flow "shadow zone" at the back of the Slocum glider is not ideal either for resolving sharp oxyclines (Nicholson et al., 2008; Moat et al., 2016). Oxygen concentrations were corrected for optode membrane lag following Bittig et al. (2014). However, where the oxycline was too steep and full $C(O_2)$ variations could not be resolved, the data were omitted. Occasionally, the glider turned close to the deep pycnocline (see Fig. 2b). This meant that the glider was not sampling for long enough to resolve the $C(O_2)$ minimum in the narrow bottom mixed layer (BML) before it turned to climb. This resulted in unresolved BML $C(O_2)$.

~~Glider optode oxygen were calibrated against Winkler analysed discrete samples (surface and bottom triplicate, Fig. A1).~~ The AA4831 optode has been shown to have low drift ($< 0.5\% \text{ a}^{-1}$) and good precision (better than 0.2 mmol m^{-3}) (Körtzinger et al., 2004; Nicholson et al., 2008; Johnson et al., 2010; Champenois & Borges, 2012). Optode drift was estimated to have been $0.004\% \text{ d}^{-1}$ in this study by comparing all optode drift rates throughout the ~~AlterECO~~ AlterEco project.

2.2 Oxygen flux calculations

Following Sharples et al. (2007), the oxygen flux, $J(O_2)$, was estimated as

$$J(O_2) = m \frac{\Gamma \epsilon \rho}{g} \quad [1]$$

where $g = 9.81 \text{ m s}^{-2}$, ρ is water density (in kg m^{-3}), ϵ is the turbulent kinetic energy dissipation rate (in W kg^{-1}) and $m = dC(O_2)/d\rho$ (in mmol kg^{-1}) is the oxygen concentration gradient with respect to density. The unit of J is $\text{mmol m}^{-2} \text{ s}^{-1}$. The dimensionless mixing efficiency Γ is defined as the ratio of potential energy gained relative to energy used to activate mixing and assumed to be constant at 0.2 for the stratified water column (Osborn, 1980; Twedde et al., 2013; Williams et al., 2013a; 2022). While there is ongoing discussion on the assumption of a constant mixing efficiency in stratified fluids, no study has arrived yet at a conclusive improvement, so this simple solution has been employed here as current best practice (Gregg et al. 2018).

As previously discussed, the optode membrane lag combined with the positioning of the optode meant that we could not resolve the oxycline accurately. This issue is particularly acute for shelf seas where there are large $C(O_2)$ and temperature gradients. To overcome this problem, we have substituted m with the product of the CTD temperature–density gradient, $dT_{\text{CTD}}/d\rho$, (approximately linear over a sufficiently narrow temperature range) and the optode oxygen concentration–optode temperature gradient, $dC(O_2)/dT_{\text{opt}}$. This gives the following revised version of Eq. [1]:

$$J(O_2) = \frac{dT_{\text{CTD}}}{d\rho} \frac{dC(O_2)}{dT_{\text{opt}}} \frac{\Gamma \epsilon \rho_{\text{CTD}}}{g} \quad [2]$$

~~Testing this method on an independent dataset in a nearby region which had both accurate measurements of the oxygen-density gradient, and a slow response AA4831 optode to compare against, indicated that our method calculates the oxygen-density gradient to within 13 % of the true oxygen-density gradient value (Appendix).~~ The base of the pycnocline defines the boundary between the SML and BML and represents the interface for diapycnal mixing and O_2 fluxes. In the BML, tidal mixing vertically homogenizes density and $C(O_2)$. The base of the pycnocline was defined as the depth that marked the top of the BML (Fig. 2b). Confidence limits (95 %) for $J(O_2)$ were calculated using Efron Gong ~~Bootstrap~~ bootstrap resampling method (Efron and Gong, 1983).

3. Results

Formatted: Line spacing: single

Commented [JK(S3)]: We need concentrations in mmol m-3 for equation [1] to be correct.

Commented [JK(S4R3)]: Also, concentrations are always per volume. If the reference quantity (in the denominator) is mass, the corresponding quantity is called "content" (e.g., O2 content in mmol kg-1).

Formatted: Font: Italic

Formatted: Font: Italic

Formatted: Font: Italic

Formatted: Font: Italic

Formatted: Font: Italic

Formatted: Font: Italic

Formatted: Font: Italic

Formatted: Font: Italic

Formatted: Font: Italic

Formatted: Subscript

Formatted: Font: Italic

Formatted: Subscript

Formatted: Font: Italic

Formatted: Subscript

3.1 Water column characteristics

Glider "Kelvin" measured well-defined late autumn stratification in the water column with a depth of 85 m and a relatively deep (50-60 m) thermocline both on transit to and once on station (Figure 2a2b). Stratification was thermally driven, with the 50-60 m thick SML at 11.5 °C being 4.5 °C warmer than the comparably thinner 20-30 m bottom mixed layer at 7.0 °C (Figure 2a). The SML temperature decreased by 2.3 °C to 9.2 °C over the 22 day-sampling period. There were further layers of vertical stratification within the SML and above the BML at the beginning of the deployment until the 23 October (Figure 2b). The relatively deep pycnocline was observed until early November, later than predicted by the regional models: 7 km-resolution Atlantic Margin Model AMM7 (Fig. C1). The glider started travelling west on 9 November to the recovery site, but it is unclear whether the glider moved into colder water or was capturing additional heat loss from the SML (Fig. 2).

The turbulent kinetic energy (TKE) dissipation rate ϵ within the water column ranged between $1 \times 10^{-9.10}$ and 1×10^{-6} W kg^{-1} , with the strongest mixing observed at the surface and the lowest ϵ values observed within the mid-water below the boundary of surface mixing. Prolonged periods of intense wind-driven boundary mixing ($\epsilon = 1 \times 10^{-6}$ W kg^{-1}) at the surface were evident from the measurements of TKE dissipation, with this turbulence occasionally penetrating and eroding the top of the pycnocline, as observed between 23 and 27 October (Fig 2d2c). In comparison to the surrounding midwater ϵ levels (1×10^{-9} W kg^{-1}), enhanced ϵ was observed within the pycnocline when the glider dived deep enough to sample across it (Fig 2e3c). Furthermore, episodic intense bursts of ϵ ($1 \times 10^{-7.5}$ W kg^{-1}) were also occasionally observed within the pycnocline (Fig. 2c and Fig. 3c). However, the glider did not measure clear bottom boundary turbulence driven by the barotropic tide due to having to turn within 15m of the bed and thus not always being in the narrow BML layer as discussed.

The deep pycnocline separated the oxygen-replete SML (280 $\mu\text{mol kg}^{-1}$, 100 % saturation) from the oxygen-depleted BML (240-250 $\mu\text{mol kg}^{-1}$, 75 % saturation; Fig. 3). Evidently the glider only sampled across the pycnocline and into the BML on two separate occasions (Fig. 2). Therefore, for this study the two periods are treated as two separate time series (A, from 18 to 30 October 2018; B, from 8 to 13 November 2018 - travelling SW back to shore for recovery from 9 November) for flux calculations.

3.2 Diapycnal mixing of O_2

The instantaneous diapycnal turbulent kinetic dissipation rate ϵ over both time series A and B ranged from 1×10^{-9} to 1×10^{-7} W kg^{-1} , with the average for time series A calculated as $\epsilon_{\text{pycno}} = (8.3 \pm 2.0) \times 10^{-8}$ W kg^{-1} (95 % confidence interval). For time series B, ϵ_{pycno} was slightly lower at $(2 \pm 0.8) \times 10^{-8}$ W kg^{-1} (Table 1). The instantaneous $J(\text{O}_2)$ flux into the BML ranged between 10^{-6} and 10^{-4} $\text{mmol m}^{-2} \text{d}^{-1}$ (Fig. 3d) with the highest values corresponding to the highest ϵ_{pycno} values (Fig. 3c & d). Mean $J(\text{O}_2)$ was (5.4 ± 1.0) $\text{mmol m}^{-2} \text{d}^{-1}$ and (3.5 ± 1.0) $\text{mmol m}^{-2} \text{d}^{-1}$ for time series A and B, respectively (Table 1). The mean $J(\text{O}_2)$ was higher in time series A due to a significantly larger mean ϵ_{pycno} (Table 1), despite experiencing a weaker oxygen density gradient compared to time series B (-34.4 and -92.5 respectively). The stronger oxygen gradient in time series B was due to the SML decreasing in temperature between time series A and time series B (Fig. 2b), resulting in a lower density gradient between the SML and BML, which in turn increased the observed oxygen-density gradient.

There was a total of 504 measurements of ϵ_{pycno} over both time series A and B and of these measurements there were 204 episodic mixing events or 'spikes' (defined as periods when $\epsilon_{\text{pycno}} > 10^{-7.5}$ W kg^{-1} , which was 25 standard deviations from the mean) which made up 40 % of the observations of ϵ_{pycno} . Despite episodic events making up such a small proportion of the ϵ_{pycno} observations, when these were omitted, the recalculated mean ϵ_{pycno} decreased from $(8.3 \pm 2.0) \times 10^{-8}$ to $(1.5 \pm 0.1) \times 10^{-8}$ W kg^{-1} for time series A, and from $(2.0 \pm 0.8) \times 10^{-8}$ to $(0.7 \pm 0.2) \times 10^{-8}$ W kg^{-1} for time series B. We used these mean ϵ_{pycno} values (with spikes omitted) to recalculate $J(\text{O}_2)$ and found it decreased to 1.0 $\text{mmol m}^{-2} \text{d}^{-1}$ for time series A and 1 $\text{mmol m}^{-2} \text{d}^{-1}$ for time series B. This equated to episodic mixing events making up 74 to 89 % of the observed $J(\text{O}_2)$ into the BML.

4. Conclusions Discussion

Diapycnal mixing may act to alleviate oxygen deficiency in shelf seas by providing oxygen to the BML during the earlier periods of spring and summer stratification (e.g., Rovelli et al., 2016; Williams et al., 2022), but direct measurements

Formatted: Font color: Text 1

Formatted: Font color: Text 1

Formatted: Font color: Text 1

Formatted: Font: Italic, Font color: Text 1

Formatted: Font color: Text 1

Formatted: Font color: Text 1

Formatted: Font: Italic, Font color: Text 1

Formatted: Font color: Text 1

Formatted: Font: Italic, Font color: Text 1

Formatted: Font color: Text 1

Formatted: Font color: Text 1

Formatted: Font: Italic, Font color: Text 1

Formatted: Font color: Text 1

Formatted: Font: Italic, Font color: Text 1

Formatted: Font color: Text 1

Formatted: Font color: Text 1

Formatted: Font: Italic, Font color: Text 1

Formatted: Font color: Text 1

Formatted: Font color: Text 1

Formatted: Superscript

Formatted: Line spacing: single, Don't keep with next

Commented [JK(S5)]: Rounded to something more appropriate.

170 of the diapycnal oxygen flux in shelf seas are sparse both temporally and spatially. In this study, we present the first
estimates of autumn diapycnal oxygen fluxes in a temperate shelf sea immediately before the breakdown in stratification,
thus at the period where the BML had spent the longest time isolated from the atmosphere and O₂ concentrations were likely
to be at their lowest. We estimated the oxygen flux using co-located measurements of both C(O₂) and TKE dissipation rate
175 on an autonomous underwater glider. Furthermore, we have presented a numerical solution to resolve oxygen fluxes where
there are limited measurements within the oxycline and in the thin BML. Our method of using the optode oxygen
concentration–optode temperature gradient can prove very useful where sharp gradients across the pycnocline are unable to
be resolved by the glider.

Diapycnal mixing supplied O₂ fluxes between 2.5 and 6.4 mmol m⁻² d⁻¹ (lower and upper end of the 95 %
confidence intervals) into the relatively thin (20 to 30 m) BML in autumn. This is the first time a thin BML so late in autumn
180 has been observed in the Northern North Sea, indicating that wind and tide were unable to erode the pycnocline in this
relatively energetic region. Integrated over the autumn period (120 to 150 days), such an oxygen flux would equate between
0.3 and 1.0 mol m⁻² of oxygen being supplied across the pycnocline into the BML via diapycnal mixing. Assuming a 20 to
30 m thick BML as typical for this time of year in this area, this equates to a volumetric increase in oxygen content of 10 to
50 μmol kg⁻¹. At the end of the stratified period, the BML O₂ content was between 240 and 250 μmol kg⁻¹. Without the
185 diapycnal supply of O₂, it would have been between 190 and 240 μmol kg⁻¹ (6.2 to 7.9 mg L⁻¹), the lower end of which
approaches the ecologically concerning level of 6 mg L⁻¹. Rovelli et al. (2016) also measured diapycnal oxygen fluxes in the
central North Sea (56.49° N, 2.98° E) during late summer 2009, and found that thermocline mixing provided the BML with a
significant source of oxygen via thermocline mixing (18 to 74 mmol m⁻² d⁻¹). These notably large summer fluxes of O₂ into
the higher volume BML than shown in our study are shown by the authors to significantly reduce the depletion of oxygen
190 that occurs as a result of biological uptake in the sediment. It is apparent then that diapycnal fluxes that here are shown to be
mostly driven by episodic events, provide a vital mechanism for alleviating oxygen deficiency in the North Sea towards the
end of the stratified period.

The supply of oxygen across the pycnocline has recently been found to alleviate oxygen deficiency in other regions,
too. For example, observations using a moored profiler in the northwestern boundary current region of Japan/East Sea over a
195 6-month period were found to provide a downward oxygen flux of 0.3 mmol m⁻² d⁻¹ from the East Sea Intermediate Water
(Ostrovskii et al., 2021). In the open ocean oxygen minimum zone (OMZ) off northwest Africa the diapycnal oxygen flux
was found to contribute approximately one third (0.4 mmol m⁻² d⁻¹) of the biological demand of the OMZ core (Fischer et
al., 2013). Evidently, vertical mixing may act to ventilate deeper waters across many different oceanic regions. However, in
the shelf sea, this mechanism can also supply the deeper BML with fresh organic material from the euphotic zone to be
200 remineralised (Garcia-Martin et al., 2018a; 2018b 2018), thus contributing to biological oxygen consumption. The
relationship between vertical mixing and oxygen concentrations below the thermocline is therefore more complex than being
solely a ventilation mechanism.

5. Conclusions

205 Glider oxygen concentration measurements using optodes with a relatively slow response to estimate fluxes in
environments with sharp O₂ gradients present a real challenge due to optode membrane lag and optode positioning.
Irrespective of this, such datasets considerably increase the spatio-temporal measurement resolution for a better assessment
and understanding of the ocean dynamics in these regions, where ecological and marine management issues are of prime
importance. Furthermore, in this study we have provided a solution to accurately calculate vertical fluxes using gliders, and
have demonstrated how autonomous underwater vehicles are a low-cost and effective tool to potentially contribute to
210 providing monitoring capability.

Coastal and shelf seas are increasingly being looked to as an energy source with the development of wind and tidal
renewable energy, with the aim for 40 GW of energy being harnessed from the wind by 2030. Research on the impact of
these floating and static wind farms on stratification, mixing and deoxygenation is premature, but a recent study has
indicated that deoxygenation will increase in areas of the North Sea already at risk of low oxygen levels as a result of the

Commented [JK(S6)]: Compare with Rovelli et al. (2016). They found 18 to 74 mmol m⁻² d⁻¹ in the central North Sea.

Commented [JK(S7)]: I checked the value in the Ostrovskii et al. (2021) paper and they have misreported it as mol m⁻² month⁻¹ when it should be mmol m⁻² month⁻¹. Not the only error in Ostrovskii et al.'s paper, e.g. the value of Fischer et al. is given as 1±5, but should be (5±1) × 10⁻³ μmol m⁻² s⁻¹. They also converted the estimates of Rovelli et al. 2016 incorrectly (factor of 10 too small). To make the values directly comparable to our estimates, I've converted everything to mmol m⁻² d⁻¹.

Commented [JK(S8)]: missing from list of references; should be <https://doi.org/10.1016/j.jmarsys.2021.103619>

Formatted: Line spacing: single, Don't keep with next

215 presence of static wind farms increasing primary production but also reducing advective currents and bottom shear stress
(Daewel et al., 2022). It is therefore imperative that we continue to monitor dissolved oxygen concentrations alongside
measurements of hydrography and mixing in coastal and shelf sea waters, especially as offshore installations expand, with
unknown consequences on ecosystem health. This study demonstrates that autonomous underwater vehicles are a low-cost
and effective tool to provide this monitoring capability. Furthermore, resolving the oxycline effectively in these environments
is crucial to understand how potentially oxygen deficient bottom waters might evolve with varying mixing regimes in the
future.

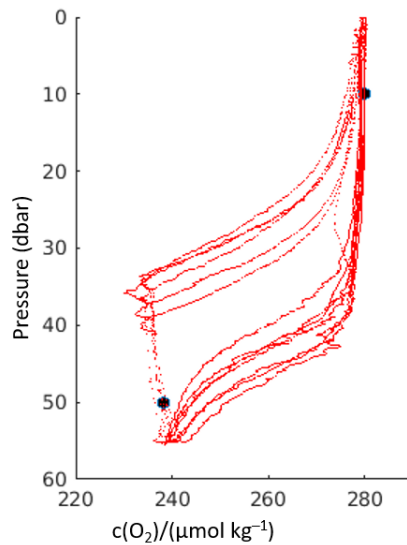
Commented [MC9]: Why? I would have thought the opposite with the obstruction increasing mixing

Commented [WCA10R9]: Have added explanation to clarify

Formatted: Font: +Body (Times New Roman)

6. Appendices

Appendix A: Optode oxygen concentration calibration using discrete Winkler samples



225 Figure A1: Vertical oxygen content profiles from the initial 6 glider dive and climbs at deployment of glider "Kelvin" (red
lines). Black circles are the oxygen values from Winkler-analysed discrete samples taken in triplicate within the SML and
BML. Note the severe optode membrane lag evident due to the disparity between dive and climb profiles.

Appendix B: Comparison between oxygen concentration-density gradients measured directly using high-resolution optode data and reconstructed using Eq. 2

230 As we cannot accurately resolve the oxygen concentration gradient directly in our glider study due to only having a
slow-response optode, our calculated $m = dT_{CTD} / d\rho * dC(O_2) / dT_{opt}$ cannot be directly compared to $m = dC(O_2) / d\rho$ at the

235 time of survey reported on in the present manuscript. However, data from the same area of the North Sea at a different time of year (during late summer in the presence of a stronger vertical oxygen concentration gradient), when we did have both high-resolution oxygen concentration data (calibrated fast-response Rinko optode) and a lagged slow-response optode (Aanderaa 4831) for comparison (Fig. B3), show the validity of our approach to analyse the slow-response optode data.

Specifically, we have calculated the oxygen concentration-density gradient at the base of the pycnocline from the Rinko data (Fig. B1).

240 We have then used the glider CTD temperature T_{CTD} , lagged optode oxygen concentration $C(O_2; \text{lagged})$, and the lagged optode thermistor temperature T_{opt} at the base of the pycnocline (where $1027.5 \text{ kg m}^{-3} < \rho < 1027.75 \text{ kg m}^{-3}$; Fig. B2) to calculate the first two terms of Eq. 2 and compare it with the high-resolution oxygen concentration-density gradient. The latter gradient obtained from linear regression of the data in Fig. B4 is $m = -168 \text{ mmol kg}^{-1}$.

For comparison, the oxygen concentration gradient calculated using Eq. 2 is

$$m = dT_{CTD}/d\rho \, dC(O_2; \text{lagged})/dT(\text{thermistor}) = -4.2 \text{ K m}^3/\text{kg} * 45 \text{ mmol m}^{-3}/\text{K} = -189 \text{ mmol kg}^{-1}$$

245 This estimate is within 12.5% of the high-resolution value. This demonstrates that our method can be used to calculate the oxygen gradient reasonably accurately.

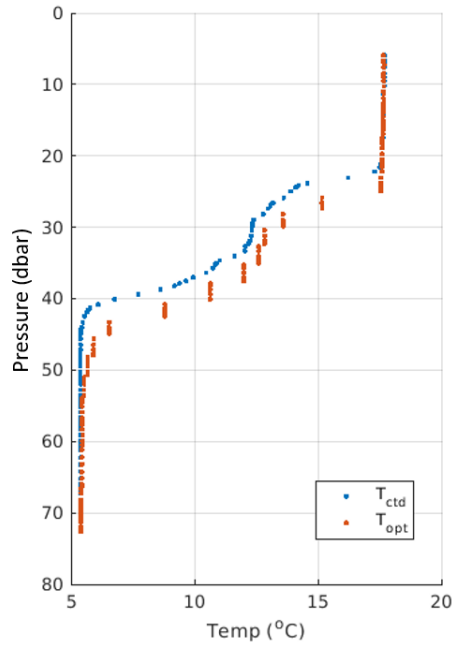
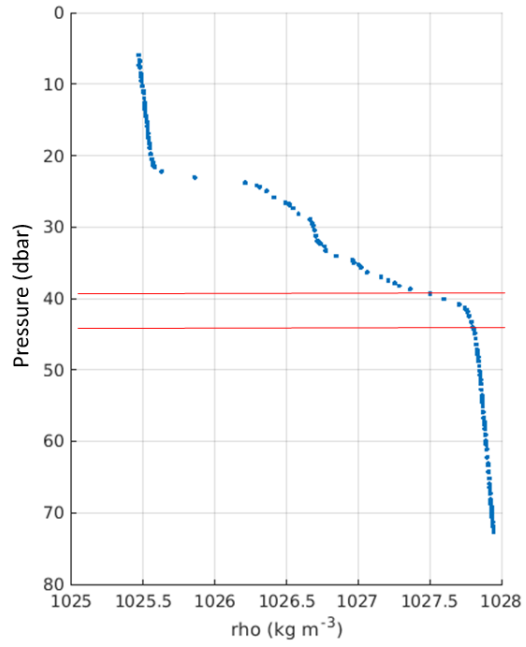


Figure B1: Vertical profile of CTD (blue) and optode thermistor temperature (red).



250 Figure B2: Density profile from the CTD showing two step structure, red lines mark the area where the oxygen concentration-density gradient has been calculated (1027.5 to 1027.75 kg m⁻³).

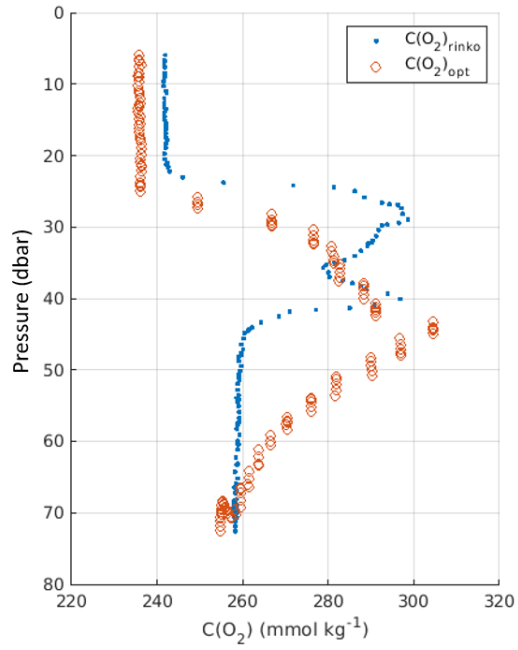


Figure B3: Fast response oxygen from RINKO (blue) and lagged Aanderaa optode (red), positioned like the optode in our glider study.

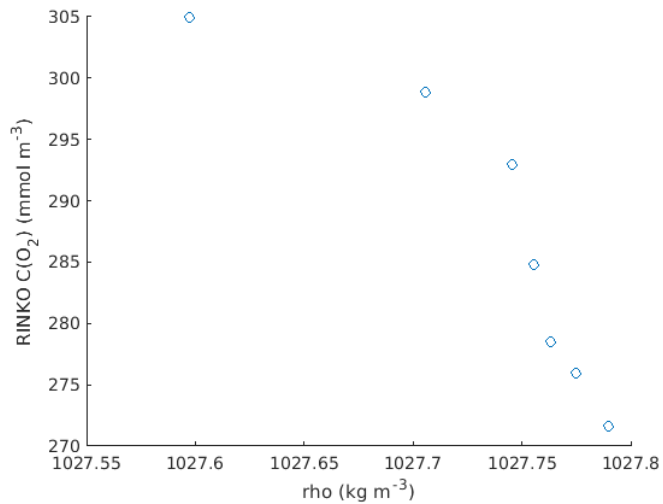
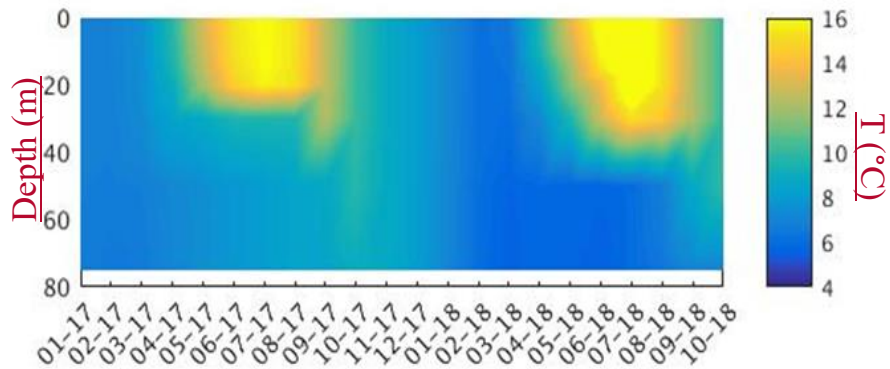


Figure B4: Oxygen concentration-density relationship from the high-resolution Rinko optode.

Appendix C: Regional 7 km-resolution Atlantic Margin Model AMM7 temperature



260 [Figure C1: Regional 7 km-resolution Atlantic Margin Model AMM7 temperature for 2017 and 2018 from the same position as glider Kelvin \(56.2° N, 2° E\). AMM7 shows complete breakdown of stratification by October 2018, weeks earlier than observed.](#)

Data availability statement

All data are publicly available via zenodo (FAIR compliant) from the BODC glider data archive under [AlterECOAlterEco 5 'Kelvin'](#) (https://gliders.bodc.ac.uk/inventory/glider-inventory/) and under the NERC Open Government License.

265 Author contribution

C. Williams, T. Hull, [J. Kaiser](#) and M. Palmer designed the sampling campaign with the gliders. J. Kaiser developed the oxygen optode temperature method to calculate [the oxygen concentration](#) gradient effectively. M. Toberman and M. Palmer processed the turbulence data from the OMG. C. Williams processed the rest of the glider data with input from C. Mahaffey, [T. Hull](#) and N. Greenwood. T. Hull performed oxygen Winkler analysis to calibrate the glider oxygen optode measurements. 270 C. Williams prepared the manuscript with contributions from all co-authors.

Acknowledgements

We thank the captains and crew of the RV Princess Royal for their help and support at sea and all the scientists involved in the three cruises. We would also like to thank the Marine Autonomous & Robotics Systems (MARS) facility (National Oceanographic Centre, Liverpool) for deployment, recovery and piloting of "Kelvin-". We are grateful to the UK Natural Environment Research Council (NERC) for funding the research cruises via the [AlterECOAlterEco](#) project that supported this work (NERC grant reference NE/P013864/1). 275

References

- Bittig, H. C., Fiedler, B., Scholz, R., Krahnmann, G., & [KörtzingerKörtzinger](#), A.: Time dependence on flow speed and temperature. *Limnol. Oceanogr: Methods*. 12, 617-636. doi: 0.4319/lom.2014.12.617, 2014.
- 280 [Brandt, P., Bange, H. W., Banyte, D., Dengler, M., Didwischus, S.-H., Fischer, T., Greatbatch, R. J., Hahn, J., Kanzow, T., Kartensen, J., Körtzinger, A., Krahnmann, G., Schmidtke, S., Stramma, L., Tanhua, T., and Visbeck, M. On the role of circulation and mixing in the ventilation of oxygen minimum zones with a focus on the eastern tropical North Atlantic. *Biogeosciences*.12, 489-512, doi:10.5194/bg-12-489-2015, 2015.](#)
- [Burchard, H., and Rippeth, T. P. Generation of bulk shear spikes in shallow stratified tidal seas. *J. Phys. Oceanogr.* 39\(4\), doi:10.1175/2008JPO4074.1, 2009.](#)
- 285 [Butenschön, M., Clark, J., Aldridge, J., Allen, I. J., Artioli, Y., Blackford, J., et al.: ERSEM 15.06: a generic model for marine biogeochemistry and the ecosystem dynamics of the lower trophic levels. *Geosci. Model Dev*, 9, 1293-1339, https://doi.org/10.5194/gmd-9-1293-2016, 2016.](#)
- [Ciavatta, S., Kay, S., Saux-Picart, S., Butenschön, M., and Allen, J. I. Decadal reanalysis of biogeochemical indicators and fluxes in the North west European shelf-sea ecosystem. *JGR Oceans*. 121\(3\). https://doi.org/10.1002/2015JC011496, 2016.](#)
- 290 [Champenois, W., & A. V. Borges.: Seasonal and interannual variations of community metabolism rates of a Posidonia oceanica seagrass meadow. *Limnol. Oceanogr.* 57\(1\). 347-361. https://doi.org/10.4319/lo.2012.57.1.0347, 2012.](#)
- [Daewel, U., Akhtar, N., Christiansen, N., & Schrum, C.: Offshore wind farms are projected to impact primary production and bottom water deoxygenation in the North Sea. *Commun Earth Environ* 3, 292 \(2022\). https://doi.org/10.1038/s43247-022-00625-0](#)
- 295 [Davis, C. E., Mahaffey, C., Wolff, G. A., & Sharples, J.: A storm in a shelf sea: Variation in phosphorus distribution and organic matter stoichiometry. *Geophys. Res. Lett.* https://doi.org/10.1002/2014GL061949, 2014.](#)

Formatted: Line spacing: single

Formatted: Line spacing: single, Don't keep with next

Formatted: Line spacing: single

Formatted: Line spacing: single, Don't keep with next

Formatted: Line spacing: single

Formatted: Line spacing: single

Formatted: Line spacing: single

Formatted: No underline, Font color: Auto, Pattern: Clear

Formatted: Line spacing: single

Butenschön, M., Clark, J., Aldridge, J., Allen, I. J., Artoli, Y., Blackford, J., et al.: ERSEM 15.06: a generic model for marine biogeochemistry and the ecosystem dynamics of the lower trophic levels. *Geosci. Model Dev.*, 9, 1293–1339. <https://doi.org/10.5194/gmd-9-1293-2016>, 2016.

Diaz, R. J., & Rosenberg, R.: Spreading dead zones and consequences for marine ecosystems. *Science*, 321(5891), 926–929. Doi:10.1126/science.1156401, 2008.

Efron, B., and Gong, G. A leisurely look at the bootstrap, the jackknife, and cross-validation. *The American Statistician*, 37(1), 36–48, 1983.

Fischer, T., Banyte, P., Dengler, M., Krahnemann, G., Tanhua, T., & Visbeck, M.: Diapycnal oxygen supply to the tropical North Atlantic oxygen minimum zone. *Biogeosci.*, 10, 5079–5093. <https://doi.org/10.5194/bg-10-5079-2013>, 2013.

García-Martín, E. E., Daniels, C. J., Davidson, K., Davis, C. E., Mahaffey, C., Mayers, K. M., McNeill, S., Poulton, A. J., Purdie, D. A., Tarran, G. A., & Robinson, C. Seasonal changes in plankton respiration and bacterial metabolism in a temperate shelf sea. *Progress in Oceanography*. doi: 10.1016/j.pocean.2017.12.002, 2018.

Gilbert, D., Rabalais, N. N., Diaz, R. J., & Zhang, J.: Evidence for greater oxygen decline rates in the coastal ocean than in the open ocean. *Biogeosci.* 7, 2283–2296. doi:10.5194/bg-7-2283-2010, 2010.

Grantham, B. A., Chan, F., Nielsen, K. J., Fox, D. S., Barth, J. A., Huyer, A., et al.: Upwelling-driven nearshore hypoxia signals ecosystem and oceanographic changes in the northeast Pacific. *Nature*, 429, 749–754, doi:10.1038/nature02605, 2004.

Greenwood, N., Parker, E. R., Fernand, L., Sivyer, D. B., Weston, K., Painting, S., et al.: Detection of low bottom water concentrations in the North Sea; implications for monitoring and assessment of ecosystem health. *Biogeosci.* 7, 1357–1373, doi:10.5194/bg-7-1357-2010, 2010.

Gregg, M. C., D'Asaro, E. A., Riley, J. J., & Kunze, E. Mixing efficiency in the ocean. *Ann. Rev. Marine. Science*, 10, 443–473. doi:10.1146/annurev-marine-121916-063643, 2018.

Große, F., Greenwood, N., Kreuz, M., Lenhart, H., Machoczek, D., Pätsch, J., et al. Looking beyond stratification: a model-based analysis of the biological drivers of oxygen deficiency in the North Sea. *Biogeosci.* 13, 2511–2535. doi:10.5194/bg-13-2511-2016, 2016.

Holt, J., Harle, J., Wakelin, S., Jardine, J., and Hopkins, J. Why is seasonal density stratification in shelf seas expected to increase under future climate change? 49 (23). <https://doi.org/10.1029/2022GL100448>, 2022.

Inall, M. E., Rippeth, T. J., and Sherwin, T. J. Impact of nonlinear waves on the dissipation of internal tidal energy at a shelf break. *JGR Oceans*, 105(C4), 8687–8705, 2000.

Johnson, K. S., Riser, S. C., and Karl, D. M.: Nitrate supply from deep to near-surface waters of the North Pacific subtropical gyre. *Nature*, 465, 1062–1065, doi:10.1038/nature09170, 2010.

Körtzinger, A., Schimanski, J., Send, U., & Wallace, D.: The ocean takes a deep breath. *Science*, 306(5700), 1337. <https://doi.org/10.1126/science.1102557>, 2004.

Lowe, J. A., Howard, T., Pardaens, A., Tinker, J., Holt, J., Wakelin, S., Milne, G., Leake, J., Wolf, J., Horsburgh, K., et al.: UK Climate Projections science report: Marine and coastal projections. http://ukclimateprojections.defra.gov.uk/images/stories/marine_pdfs/UKP09_Marine_report.pdf, 2009.

Mahaffey, C., Hull, T., Hunter, W., Greenwood, N., Palmer, M., Sharples, J., Wakelin, S. and Williams, C. Climate change impacts on dissolved oxygen concentration in marine and coastal waters around the UK and Ireland. *MCCIP Science Review* 2023, 31pp. doi: 10.14465/2023.reu07.oxy, 2023.

Meire, L., Soetaert, K. E. R., & Meysman, F. J. R. Impact of global change on coastal oxygen dynamics and risk of hypoxia. *Biogeosci.* 10, 2633–2653. doi:10.5194/bg-10-2633-2013, 2013.

Moat, B. I., D. Smeed, C. L. J. Marcinko, & S. R. Turnock: Flow distortion around underwater gliders and impacts on sensor measurements: a pilot study using large-eddy simulations. *Research and Consultancy Report No. 58*. Affiliation: National Oceanography Centre, U.K, 2016.

Nicholson, D., Emerson, S., & Eriksen, C. C.: Net community production in the deep euphotic zone of the subtropical North Pacific gyre from glider surveys. *Limnology and Oceanography*, 53(5), 2226–2236. https://doi.org/10.4319/lo.2008.53.5_part_2.2226, 2008.

Osborn, T. R.: Estimates of the local rate of vertical diffusion from dissipation measurements. *J. Phys. Oceanogr.* 10(1), 83–89, doi: 10.1175/1520-0485(1980)010<0083:EOTLRO>2.0.CO;2, 1980.

Formatted: Line spacing: single

Formatted: Line spacing: single

Formatted: Hyperlink, Font color: Auto

Formatted: Line spacing: single, Don't keep with next, Don't keep lines together

Formatted: Line spacing: single

Formatted: Hyperlink, Font color: Auto

- Ostrovskii, A., Stepanov, D., Kaplunenko, D., Park, J-H., Park, Y-G., and Tishchenko, P.: Turbulent mixing and its contribution to the oxygen flux in the northwestern boundary current region of the Japan/East Sea, April – October 2015. *J. Mar. Sys.* 224. 103619. doi.org/10.1016/j.jmarsys.2021.103619, 2021.
- 350 Palmer, M. R., Stephenson, G. R., Inall, M. E., Balfour, C., Düsterhus, A., and Green, J. A. M., Turbulence and mixing by internal waves in the Celtic Sea determined from ocean glider microstructure measurements. *J. Mar. Sys.* 144, 57 -69, 2015.
- Queste, B. Y., Fernand, L., Jickells, T. D., and Heywood, K. J.: Spatial extent and historical context of North Sea oxygen depletion in August 2010. *Biogeochem.* 113(1-3), 53-68. <http://dx.doi.org/10.1007/s10533-016-0258-9>, 2013.
- 355 Queste, B. Y., Fernand, L., Jickells, T. D., Heywood, K. J., and Hind, A. J.: Drivers of summer oxygen depletion in the central North Sea. *Biogeosci.* 13, 1209-1222, doi:10.5194/bg-13-1209-2016, 2016.
- Rippeth, T. P.: Mixing in seasonally stratified shelf seas: a shifting paradigm. *Philos Trans A Math Phys Eng Sci.* 363(1837): 2837-2854, 2005.
- [Rippeth, T. P., Lincoln, B. J., Kennedy, H. A., Palmer, M. R., Sharples, J., and Williams, C. A. J. Impact of vertical mixing on sea surface pCO₂ in temperate seasonally stratified shelf seas. *JGR Oceans.* 119\(6\). 3868-3882. doi.org/10.1002/2014JC010089, 2014.](https://doi.org/10.1002/2014JC010089)
- 360 Rovelli, L., Dengler, M., Schmidt, M., Sommer, S., Linke, P., and McGinnis, D. F.: Thermocline mixing and vertical oxygen fluxes in the stratified central North Sea. *Biogeosci.* 13, 1609-1620, <https://doi.org/10.5194/bg-13-1609-2016>, 2016.
- Schmidtko, S., Stramma, L., and Visbeck, M.: Decline in global oceanic oxygen content during the past five decades. *Nature.* 542, 335-339, doi:10.1038/nature21399, 2017.
- 365 Sharples, J., Moore, C. M., Rippeth, T. P., Holligan, P. M., Hydes, D. J., Fisher, N. R., and Simpson, J.: Phytoplankton distribution and survival in the thermocline. *Limnol. Oceanogr.* 46:486–496, 2001.
- Sharples, J., Tweddle, J. F., Green, J. A. M., Palmer, M. R., Kim, Y., Hickman, A. E., et al.: Spring-neap modulation of internal tide mixing and vertical nitrate fluxes at a shelf edge in summer. *Limnol. Oceanogr.* 52:1735–1747, doi:10.4319/lo.2007.52.5.1735, 2007.
- 370 Sharples, J., Holt, J., and Dye, S.: Impacts of climate change on shelf sea stratification. *MCCIP Science Review* 2013: 67-70, doi:10.14465/2013.arc08.067-070, 2013.
- [Tweddle, J. F., Sharples, J., Palmer, M. R., Davidson, K., and S. McNeill. Enhanced nutrient fluxes at the shelf sea seasonal thermocline caused by stratified flow over a bank. *Progress in Oceanography* 117, 37 – 47, doi: 10.1016/j.pocean.2013.06.018, 2013.](https://doi.org/10.1016/j.pocean.2013.06.018)
- 375 Vanquer-Sunyer, R., and Duarte, C. M.: Thresholds of hypoxia for marine biodiversity. *PNAS*, 105(40), 15452-15457, [https://doi:10.1073/pnas.0803833105](https://doi.org/10.1073/pnas.0803833105), [https://doi:10.1073/pnas.0803833105](https://doi.org/10.1073/pnas.0803833105), 2008.
- Wakelin, S., Artioli, Y., Holt, J. T., ~~Butenschön~~Butenschön, M., & Blackford, J.: Controls on near-bed oxygen concentration on the Northwest European Continental Shelf under a potential future climate scenario. *Progress in Oceanography*, 187, 102400. <https://doi.org/10.1016/j.pocean.2020.102400>, 2020.
- 380 Williams, C. A. J., Sharples, J., Green, M., Mahaffey, C., & Rippeth, T.: The maintenance of the subsurface chlorophyll maximum in the stratified western Irish Sea. *Limnol. Oceanogr. Fl. Env.* 3(1), 61-73, 2013a.
- Williams, C. A. J., Sharples, J., Mahaffey, C., & Rippeth, T.: Wind-driven nutrient pulses to the subsurface chlorophyll maximum in seasonally stratified shelf seas. *Geophys. Res. Let.* 40(20), 5467-5472, 2013b.
- 385 Williams, C. A. J., C. E. Davis, M. R. Palmer, J. Sharples & C. Mahaffey.: The three Rs: Resolving Respiration Robotically in Shelf Seas. *Geophys. Res. Let.* 49(4). <https://doi.org/10.1029/2021GL096921>, 2022.

Figures

Figure 1. Bathymetric map showing ~~AlterECO~~AlterEco study region in the North Sea (inset) and glider tracks (black lines) to ~~AlterECO~~AlterEco sampling site at 56.2° N, 2° E.

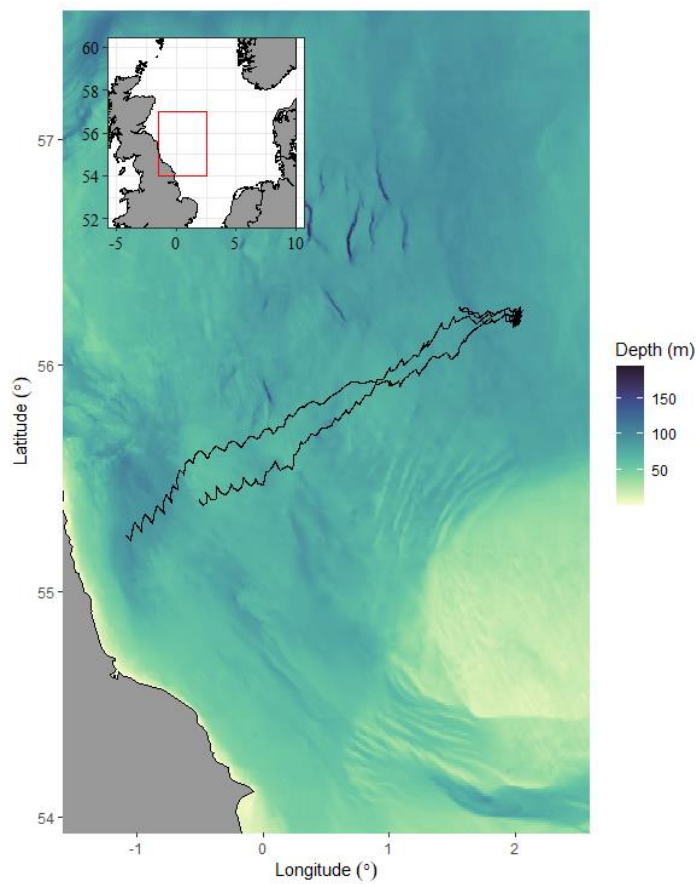
Formatted: Line spacing: single

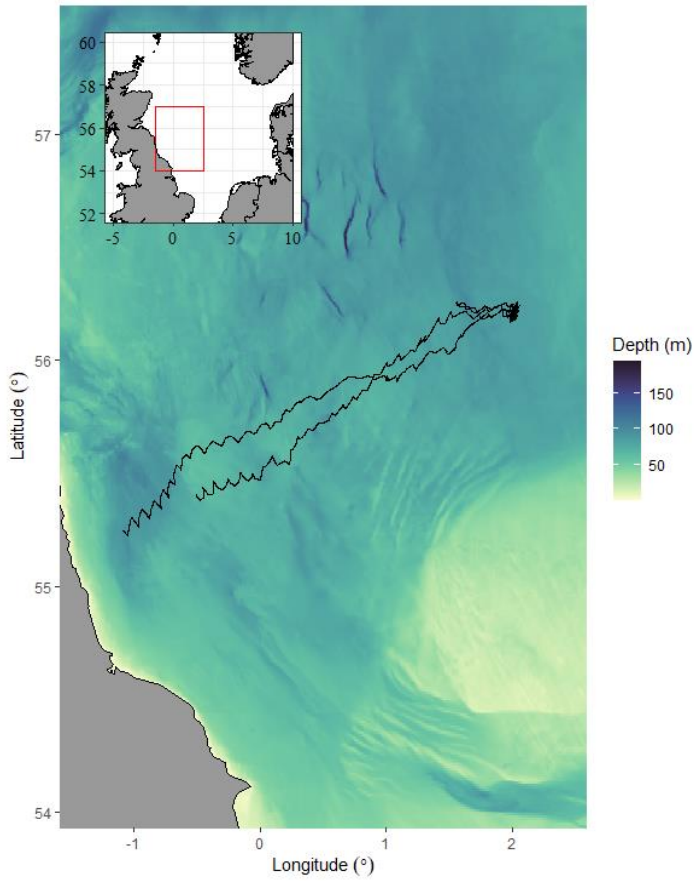
Formatted: Line spacing: single

Formatted: Font: Bold, Font color: Auto, Kern at 14 pt

Formatted: Line spacing: single, Don't keep with next

Formatted: Line spacing: single

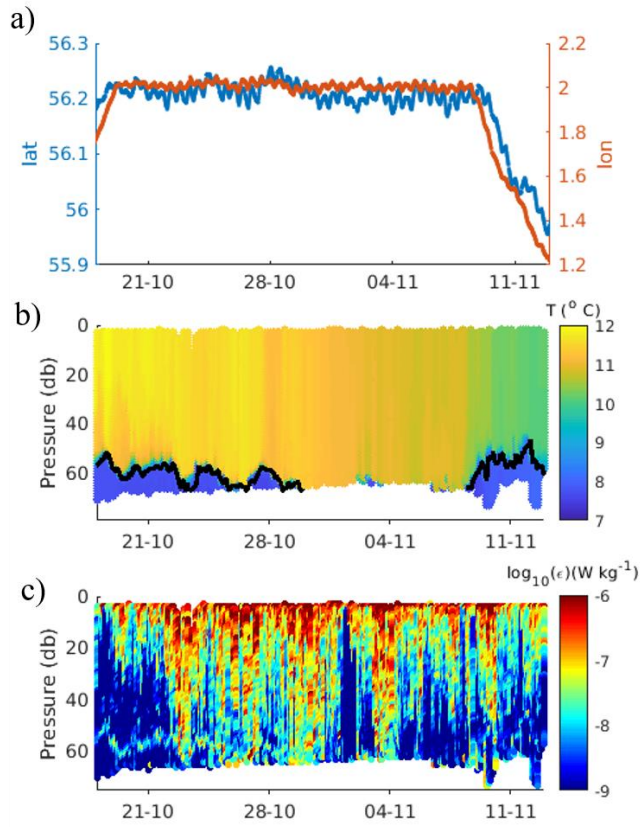


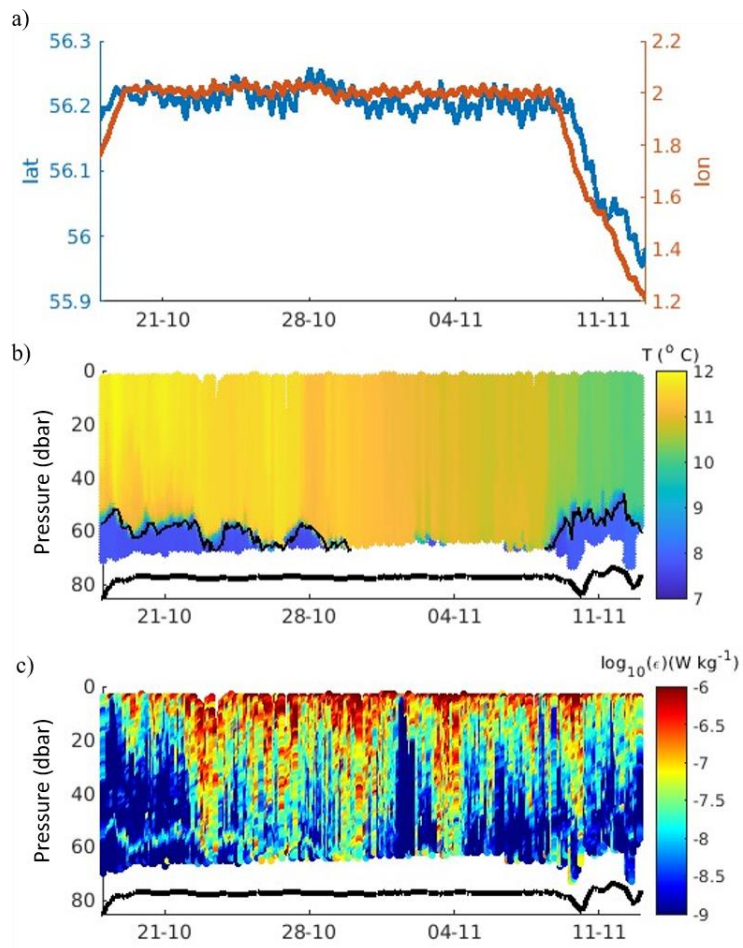


390

Figure 2: Time series of a) glider position latitude and longitude, b) temperature T (in $^{\circ}\text{C}$), and c) turbulent kinetic energy dissipation rate ε (in $\text{W}\cdot\text{kg}^{-1}$). The position of the pycnocline (thin black line) is overlaid onto temperature shown in panel b. The seabed position derived from the glider altimeter is shown in panels b) and c).

Formatted: Line spacing: single, Don't keep with next

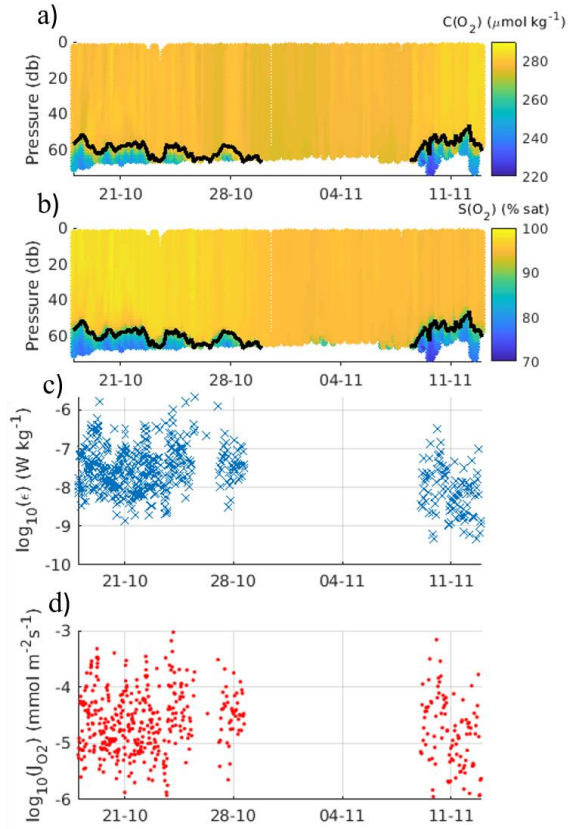




400

Figure 3: Time series of a) oxygen content (~~in $\mu\text{mol kg}^{-1}$~~) b) oxygen saturation (~~in %~~) c) turbulent kinetic energy dissipation rate ϵ_{pycno} (~~in W kg^{-1}~~) within the pycnocline, (~~thin black line in panels a and b~~), and d) the instantaneous oxygen flux $J(\text{O}_2)$ ~~in mmol m^{-2}~~ across the pycnocline. The thick black line indicates the seabed position derived from the glider altimeter. Shaded grey boxes highlight where spikes in dissipation appear to coincide with enhanced oxygen fluxes.

Formatted: Line spacing: single, Don't keep with next



405

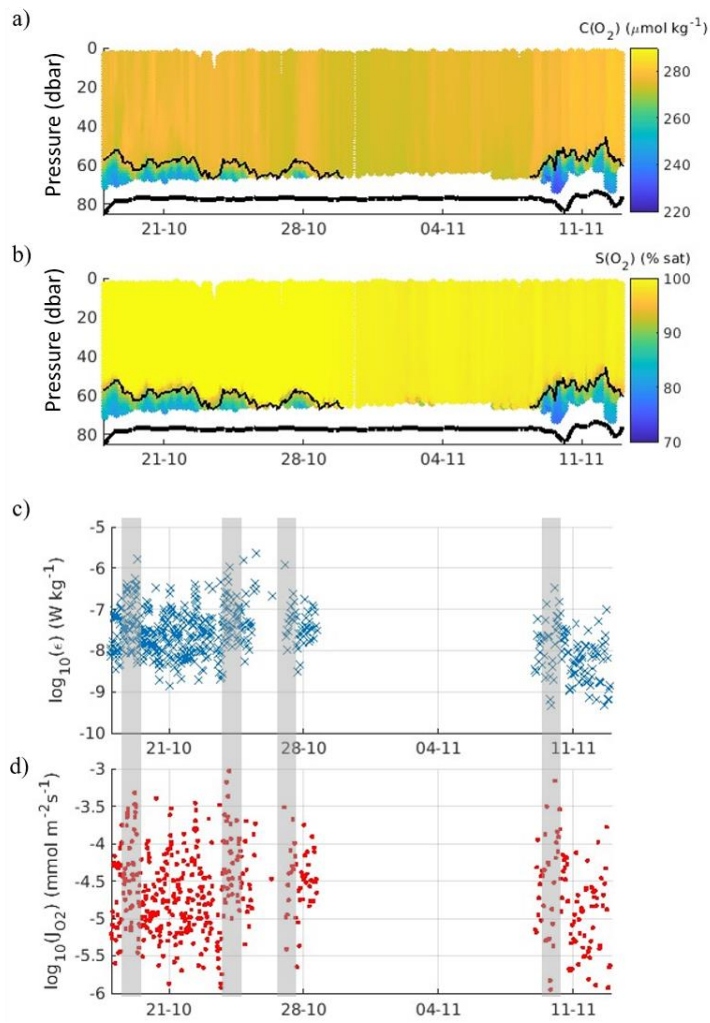


Table 1: Estimates of pycnocline turbulent energy dissipation rate $\varepsilon_{\text{pycno}}$ and oxygen fluxes $J(\text{O}_2)$ during time series A and B, with and without episodic mixing events, defined as spikes where $\varepsilon > 10^{-7.5} \text{ W kg}^{-1}$. Uncertainties correspond to 95 % confidence intervals.

	$dC(\text{O}_2)/d\rho /$ (mmol kg^{-1})	$\varepsilon_{\text{pycno}} /$ ($10^{-8} \text{ W kg}^{-1}$)	$J(\text{O}_2) /$ ($\text{mmol m}^{-2} \text{ d}^{-1}$)
Time series A, 18 to 30 October 2018	-34.4	8.3 ± 2.0	5.4 ± 1.0
Time series A, spikes removed	-34.4	1.5 ± 0.1	1.0
Time series B, 8 to 13 November 2018	-92.5	2.0 ± 0.8	3.5 ± 1.0
Time series B, spikes removed	-92.5	0.7 ± 0.2	1.0

Formatted: Line spacing: single

Commented [JK(S11)]: In section 3.2, this threshold is given as $10^{-7.5} \text{ W kg}^{-1}$; which value is it?

Commented [WA12R11]: 7.5 have double checked code too - this must be a typo thanks for spotting!

Formatted: Line spacing: single, Don't keep with next

Formatted: Line spacing: single, Don't keep with next

Formatted: Line spacing: single, Don't keep with next

Formatted: Line spacing: single, Don't keep with next

Formatted: Line spacing: single

Formatted: Line spacing: single, Don't keep with next

Formatted: Line spacing: single