

RESEARCH

Open Access

# Analysis of biophysical and anthropogenic variables and their relation to the regional spatial variation of aboveground biomass illustrated for North and East Kalimantan, Borneo

Carina Van der Laan<sup>1\*</sup>, Pita A Verweij<sup>1</sup>, Marcela J Quiñones<sup>2</sup> and André PC Faaij<sup>1</sup>

## Abstract

**Background:** Land use and land cover change occurring in tropical forest landscapes contributes substantially to carbon emissions. Better insights into the spatial variation of aboveground biomass is therefore needed. By means of multiple statistical tests, including geographically weighted regression, we analysed the effects of eight variables on the regional spatial variation of aboveground biomass. North and East Kalimantan were selected as the case study region; the third largest carbon emitting Indonesian provinces.

**Results:** Strong positive relationships were found between aboveground biomass and the tested variables; altitude, slope, land allocation zoning, soil type, and distance to the nearest fire, road, river and city. Furthermore, the results suggest that the regional spatial variation of aboveground biomass can be largely attributed to altitude, distance to nearest fire and land allocation zoning.

**Conclusions:** Our study showed that in this landscape, aboveground biomass could not be explained by one single variable; the variables were interrelated, with altitude as the dominant variable. Spatial analyses should therefore integrate a variety of biophysical and anthropogenic variables to provide a better understanding of spatial variation in aboveground biomass. Efforts to minimise carbon emissions should incorporate the identified factors, by 1) the maintenance of lands with high AGB or carbon stocks, namely in the identified zones at the higher altitudes; and 2) regeneration or sustainable utilisation of lands with low AGB or carbon stocks, dependent on the regeneration capacity of the vegetation. Low aboveground biomass densities can be found in the lowlands in burned areas, and in non-forest zones and production forests.

**Keywords:** Aboveground biomass; Tropical forest landscapes; Disturbance; Spatial analysis; Multiple regression; Geographically weighted regression; Biophysical and anthropogenic variables; East Kalimantan; North Kalimantan

## Background

More insights into the spatial variation of aboveground biomass (AGB) are crucial to minimise carbon emissions and global climate change from tropical deforestation, forest degradation and agricultural expansion. According to van der Werf *et al.* globally, approx. 12% of anthropogenic carbon emissions in 2008 were caused by deforestation and forest degradation [1]. During the period

1973–2010, Kalimantan, Indonesian Borneo, has lost ~31% of the total forest area [2]. With regard to land use changes, according to the Governors' Climate and Forests Task Force Indonesia [3], the recently merged provinces North and East Kalimantan are when combined the third largest carbon emitting provinces in Indonesia, with 255 Mt CO<sub>2</sub>e yr<sup>-1</sup>, after Central Kalimantan (324 Mt CO<sub>2</sub>e yr<sup>-1</sup>) and Riau (258 Mt CO<sub>2</sub>e yr<sup>-1</sup>). According to their 'business as usual' scenarios, land use change will cause carbon emissions in North and East Kalimantan to increase to 331 Mt CO<sub>2</sub>e yr<sup>-1</sup> by 2030 [3]. Mechanisms such as Reducing Emissions from Deforestation and forest

\* Correspondence: C.Vanderlaan@uu.nl

<sup>1</sup>Copernicus Institute of Sustainable Development, Group Energy and Resources, Utrecht University, Heidelberglaan 2, 3584 CS Utrecht, The Netherlands

Full list of author information is available at the end of the article

Degradation + (REDD+) [4] have been developed to halt such emissions by maintaining lands with high carbon stocks contained in living forest biomass, such as secondary and undisturbed forests. Meanwhile, expansion of low carbon stock agricultural lands can be instead shifted towards areas with already low carbon stocks or AGB, such as abandoned agricultural or restored degraded lands [5] by implementation of sustainable land zoning tools [6].

AGB is not static, but rather spatially and temporally highly variable, particularly in the tropics [7-11]. This makes its quantification and the avoidance of high AGB densities or high carbon stocks challenging (it is generally assumed that about half of AGB consists of carbon). As in other tropical forest landscapes, complex matrices of low to high AGB densities can be expected in North and East Kalimantan, due to varying biophysical conditions present, such as terrain and soil types, and anthropogenic disturbances such as fire or logging. For example, forest fires can cause substantial losses in carbon by the emission of large quantities of CO<sub>2</sub> by the burning of biomass [12,13], and via logging by the extraction of timber [14,15]. However, after a fire or logging activities, regeneration can occur, resulting in an increasing sensitivity of the remaining live and dead vegetation to subsequent disturbance events [13,16-19]. Additionally, the type and severity of the disturbance and local biophysical conditions, such as altitude, soil type and the presence of pioneer species, influence the carbon accumulation potential [18,20]. Therefore, in this paper we address the question of how such biophysical and anthropogenic variables are related to AGB, and contribute to the spatial variation of AGB in a disturbed tropical forest landscape.

AGB can be estimated at forest stand to landscape scale by plot-based measurements [21,22]. Several existing plot-based studies in tropical forest landscapes have statistically analysed the relationships between AGB and multiple biophysical variables including soil factors [7,11,23,24], altitude [11,25-27] and slope [11,28]. Anthropogenic variables, however, are usually not considered, while specifically in highly disturbed tropical areas like North and East Kalimantan, these factors are expected to strongly affect AGB. Additionally, anthropogenic variables are important and useful to support the management of, and decision-making on, maintaining carbon stocks in disturbed areas. For these reasons, our analyses include both biophysical and anthropogenic variables.

Other plot-based studies have focused on the impacts of e.g. logging [14,15] and fire [13,29], by comparing AGB between undisturbed and disturbed land classes. The relationship between forest cover change and anthropogenic variables has also been analysed [16,30,31]. These studies have instead focused on discrete land use

and forest classes and therefore have not accounted for local scale AGB variation. Furthermore, the reviewed studies were not spatially explicit or conducted over larger spatial scales, thereby limiting a landscape scale view on the factors that influence the spatial variation in AGB or forest cover.

A variety of spatially explicit data and methods exist to map and monitor land with high and low AGB or carbon over large spatial scales, such as extrapolating plot-based field AGB estimates to vegetation types with remotely-sensed reflectance data and spatial data of biophysical variables [32,33]. For example, optical data can be used for mapping forest cover, such as Landsat [34]. However, in areas with frequent cloud cover such as the tropics, radar technologies such as ALOS (Advanced Land Observing Satellite) PALSAR (Phase Arrayed L-band SAR) are more suitable [35,36]. Additionally, the integration of optical and/or radar technologies, including LiDAR (Light Detection And Ranging), has the potential to improve AGB estimates because it may reduce data saturation and mixed pixel problems [35,37-39]. Although the output maps of the aforementioned studies have visualised the spatial distribution of AGB at high resolutions and over large spatial scales, these did not include the effects of biophysical or anthropogenic factors on AGB.

Changes in AGB or carbon stocks have also been modelled at different spatial and temporal scales and resolutions [33,40-43]. Additionally, studies using spatial data for AGB have compared AGB between forest types with different levels of degradation or disturbances, e.g. by logging or fire [36,44-47]. However, the focus was mostly on a single anthropogenic variable, e.g. logging or fire, and interrelationships between or interaction effects amongst variables were not investigated.

The aforementioned studies are useful for the mapping and monitoring of AGB and carbon stocks, for e.g. REDD + mechanisms. To monitor and quantify AGB whilst taking into consideration the high spatial variation, and additionally to enable the modelling of carbon stocks, further analysis of the underlying biophysical and anthropogenic conditions and processes, using a multi-variable approach, is essential. An improved level of information quality, that considered a broader set of variables and their interactions, would allow decision-making to focus on manageable factors in support of land use allocation that minimises carbon emissions and maximises carbon uptake in support of climate change mitigation.

The aim of this study is to define which of a preselected set of biophysical and anthropogenic variables contribute significantly to the spatial variation of AGB. To this end, statistical analyses were conducted, including analysis of variance (ANOVA), non-spatial multiple linear regression and spatial geographically weighted

regression (GWR). An AGB map based on radar remote sensing data and plot-based measurements were utilised, plus landscape scale data on terrain, soil types, land allocation zoning, fires, roads, rivers and cities, covering North and East Kalimantan, Indonesian Borneo (see Figure 1). The results are shown in the Results section and can support the quantification and maintenance of living AGB and carbon stocks. In the Discussion section, the results are discussed in terms of their scientific and societal contribution, followed by the Conclusions and an extensive description of the data and analyses in the Methods section.

## Results

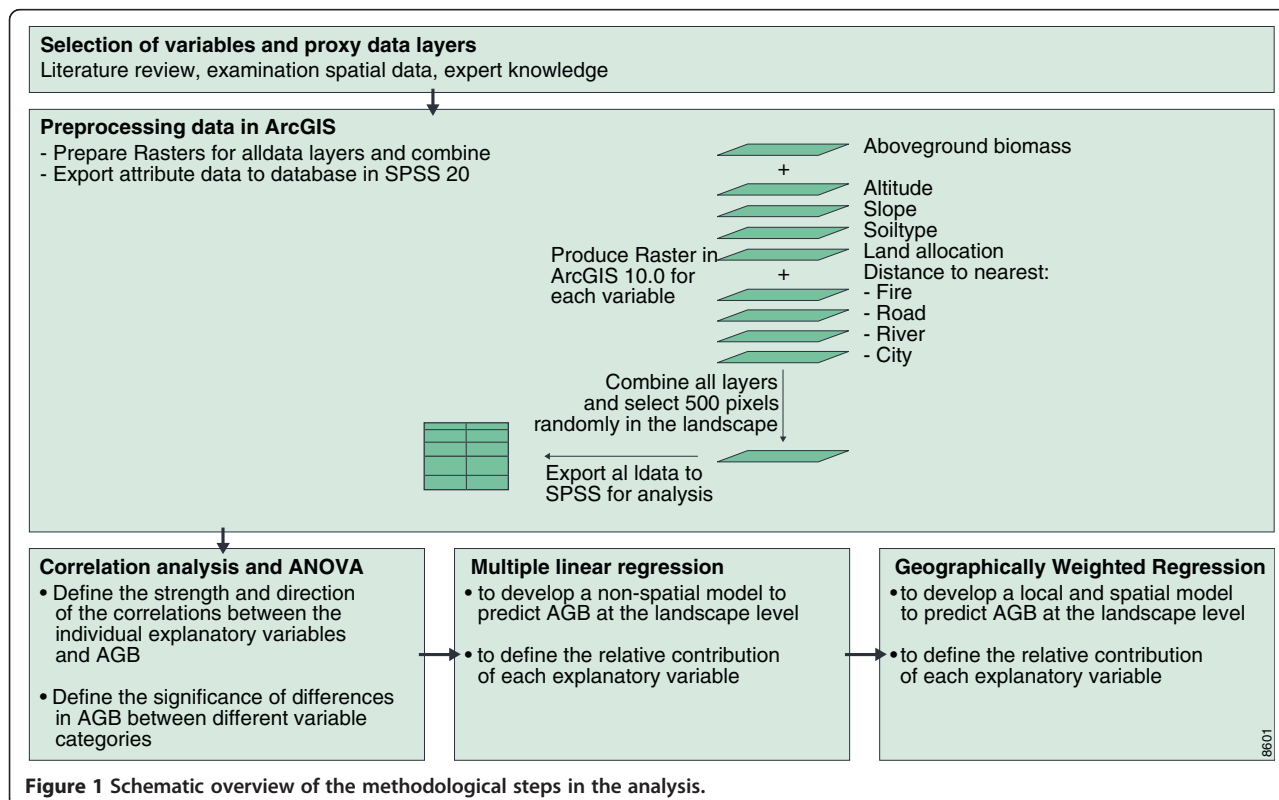
### Relationships between AGB and the continuous explanatory variables

The distribution of AGB was negatively skewed (Skewness:  $-0.852$ , st. error:  $0.113$ , Kurtosis:  $0.207$ , st. error:  $0.226$ ), which can be expected in a disturbed tropical forest landscape (Figure S1, in Additional file 1). AGB varied between  $2$  and  $480.0 \text{ t ha}^{-1}$  with an overall mean of  $213.6 \pm 80.1 \text{ t ha}^{-1}$  (for descriptive statistics, see Table S2, in Additional file 1). AGB and the selected continuous explanatory variables altitude, slope, and distance to the nearest fire, road, river and city (logarithmically transformed) appeared to have a strong, positive correlation (Table S3, in Additional file 1). All relationships are plotted in Figure 2. The Pearson's correlation coefficients ( $r$ )

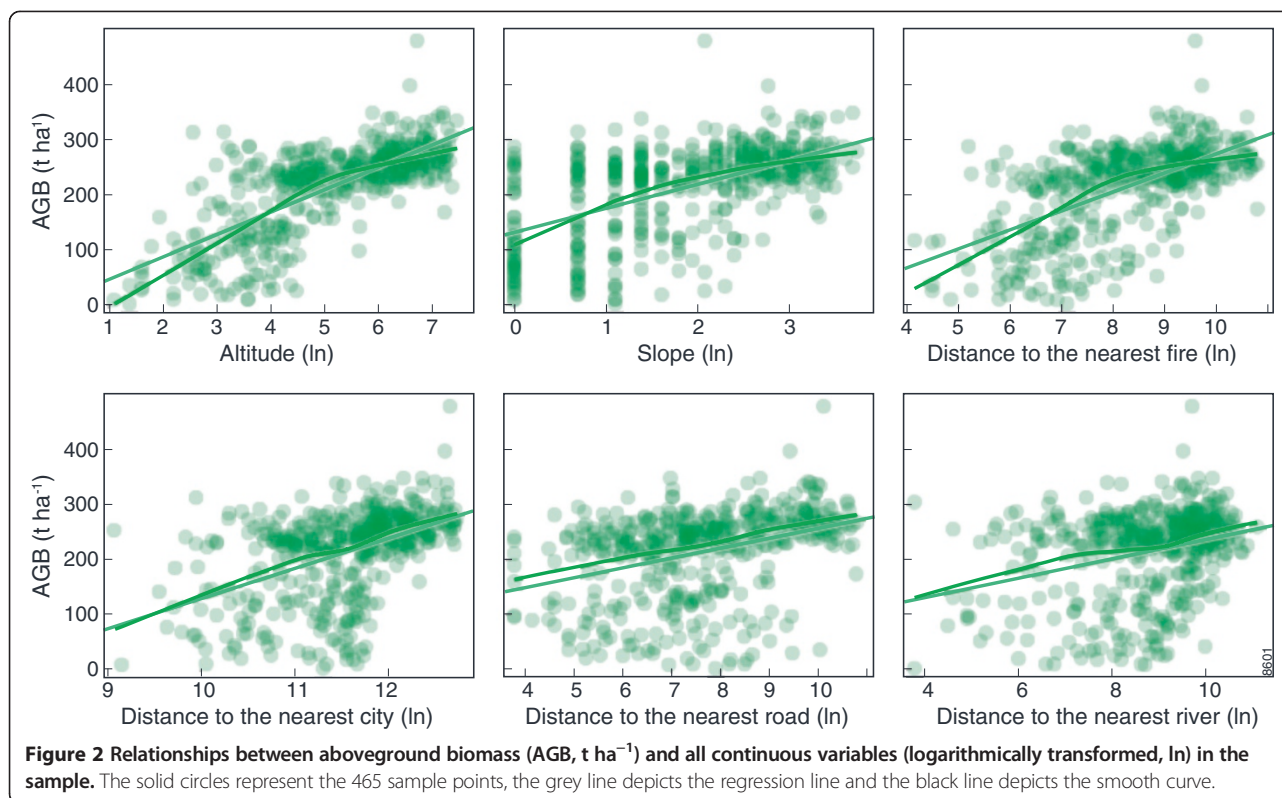
indicated the strongest relationships between AGB and the terrain variables, altitude ( $r = 0.740$ ,  $P < 0.001$ ) and slope ( $r = 0.563$ ,  $P < 0.001$ ), and between AGB and distance to the nearest fire ( $r = 0.607$ ,  $P < 0.001$ ) and city ( $r = 0.478$ ,  $P < 0.001$ ). Moderately positive relationships were found between AGB and distance to the nearest river and road ( $r \sim 0.335$ ,  $P < 0.001$ ). Altitude and distance to the nearest city were strongly related to all other explanatory variables ( $r > 0.400$ ,  $P < 0.001$ ), but not to distance to the nearest river. Distance to the nearest fire was related to the distance to the nearest river and the nearest city. No strong multicollinearity was found (Tolerance  $> 0.200$ ).

### Variation in AGB between altitude ranges and soil types

The ANOVA on the categorised altitude variable revealed significant differences in mean AGB between the categories lowlands ( $< 750 \text{ m}$ ), midlands ( $750\text{--}1,500 \text{ m}$ ) and highlands ( $> 1,500 \text{ m}$ ),  $F(2,462) = 32.85$ ,  $P < 0.001$ . The lowlands ( $M = 201$ ) had significantly lower AGB than the midlands ( $M = 276$ ,  $P < 0.001$ ) and the highlands ( $M = 282$ ,  $P < 0.05$ ). A boxplot of altitude and AGB is shown in Figure 3a. An ANOVA was used to test for mean differences in AGB among four soil types. Means in AGB for soil types differed significantly across the four types ( $F(3,461) = 14.88$ ,  $P < 0.001$ ). Bonferroni's post-hoc comparisons on the four soil types indicate that AGB on peatland ( $M = 142$ ) gave significantly lower



**Figure 1** Schematic overview of the methodological steps in the analysis.



means than on karst ( $M = 261$ ,  $P = 0.001$ ) and volcanic soils ( $M = 282$ ,  $P < 0.001$ ) (Figure 3b).

#### Variation in AGB between burned and non-burned areas and land allocation zones

AGB in non-burned areas (i.e. areas where no fire hotspots were identified by the Moderate-resolution Imaging Spectroradiometer (MODIS) between 2000 and 2008) ( $M = 223$ ,  $P < 0.001$ ) was significantly higher compared to burned areas (i.e. MODIS fire hotspots were identified within 500 m from the data point between 2000 and 2008) ( $M = 114$ ,  $F(1,463) = 79.22$ ,  $P < 0.001$ ). A boxplot of fire and AGB is shown in Figure 3c. Fires were more common in the lowlands (98%) compared to the midlands and highlands. An ANOVA showed significant differences in the mean for AGB between the five land allocation zones ( $F(4,460) = 56.06$ ,  $P < 0.001$ ) (see also Figure 3d). After Bonferroni's correction, pairwise comparisons showed that the mean AGB was significantly lower in the non-forest land zone ( $M = 152$ ,  $P < 0.001$ ) compared to the other categories, and was significantly higher in watershed protection forest ( $M = 272$ ) and the forest limited production zone ( $M = 253$ ), compared to production forest ( $M = 193$ ) and conservation forest ( $M = 211$ ).

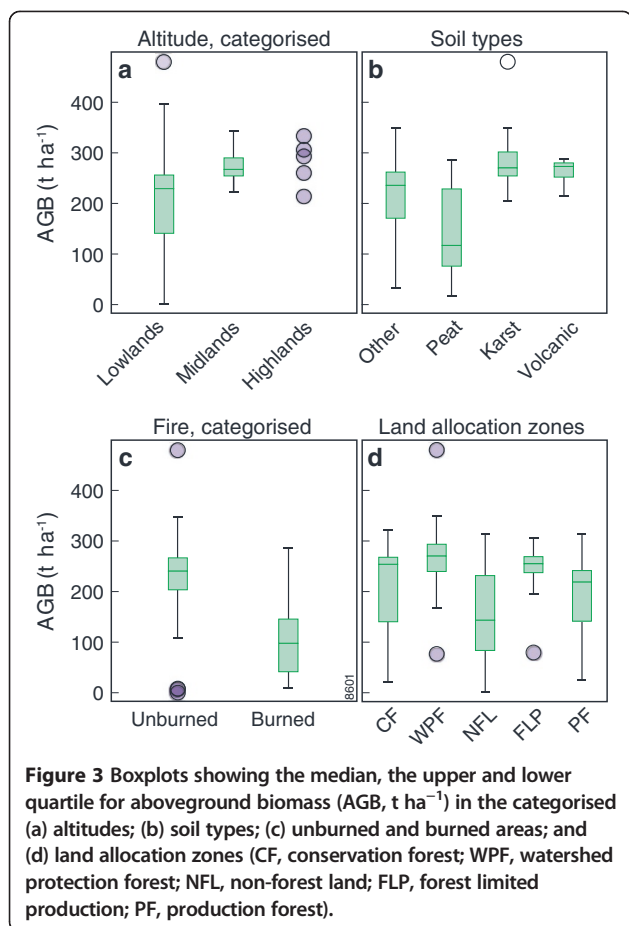
#### Multiple linear regression

After removal of the non-significant explanatory variables via conducting a backward multiple linear regression, the

variables altitude, distance to the nearest fire, and the categorical variables land allocation zoning and soil type significantly contributed to predicting AGB, and combined explained approx. 59% of the observed variance in AGB in the sample (Adjusted  $R^2 = 0.589$ ,  $F(9,455) = 72.46$ ,  $P < 0.001$ ). The standardised coefficients showed that in this analysis, altitude was the most important explanatory variable (Table 1).

Altitude and distance to the nearest fire both showed a positive relation with AGB, which means that with increasing altitude and distance to the nearest fire AGB increased. Soil type also made a difference with respect to AGB. Compared to the reference category 'other', the categories volcanic and karst showed a higher mean AGB. Karst was the only significant coefficient compared to 'other'. When compared to the reference category 'non-forest land', all land allocation zones showed a higher mean AGB.

In a second model, interaction effects between altitude and land allocation zoning were added (Table 1). These interaction effects added 2% to the explained variance of AGB ( $R^2$  change = 0.02,  $F(4, 451) = 5.29$ ,  $P < 0.001$ ). For all land allocation zones, altitude showed a positive effect on AGB; however, this effect was not equally strong in all land allocation zones (Figure S4, in Additional file 1). The strongest relationship between altitude and AGB was found in conservation forests, where altitude explained the AGB variance with about 86% ( $R^2 = 0.860$ ,  $P < 0.001$ ).



**Figure 3** Boxplots showing the median, the upper and lower quartile for aboveground biomass (AGB, t ha<sup>-1</sup>) in the categorised (a) altitudes; (b) soil types; (c) unburned and burned areas; and (d) land allocation zones (CF, conservation forest; WPF, watershed protection forest; NFL, non-forest land; FLP, forest limited production; PF, production forest).

The weakest relationship with altitude was found in watershed protection forests, where altitude explained only 17% of the variance in AGB.

No multicollinearity was present and the standardised residuals showed a normal distribution (Range = [-2.92; 3.96]), meeting the important assumptions of normality and multicollinearity underlying multiple linear regression (see Figure S5, in Additional file 1). However, the Breusch-Pagan test exposed the presence of spatial non-stationarity or heteroscedasticity (Chi-square df = 88.381,  $P \leq 0.05$ ), invalidating the significance of the statistical tests. The Moran's I test (Index = 0.147, z-score = 12.02,  $P \leq 0.05$ ) showed spatial autocorrelation of the standardised residuals, which can cause an unexplained shift in the regression coefficients and can thus influence the output of the model.

### Geographically weighted regression (GWR)

Because of the presence of spatial autocorrelation in the standardised residuals of the non-spatial multiple linear regression, geographically weighted regression (GWR) was conducted, producing for each sample point a local relationship between AGB and the explanatory variables. The variables; distance to the nearest road, city and river

**Table 1** Unstandardised coefficients resulting from the non-spatial multiple regression, without (Model 1) and with interaction terms (Model 2)

Variable	Coefficients Model 1	Coefficients Model 2
Altitude (ln)	32.8 (0.60)**	40.1 (0.73)**
Distance to the nearest fire (ln)	8.1 (0.14)**	8.4 (0.15)**
Soil type		
Karst	43.2*	42.1*
Peat	19.2	25.7
Volcanic	16.8	22.7*
Land allocation zone		
Forest limited production	19.4*	168.8**
Conservation forests	-14.5	-23.1
Production forests	16.5*	41.7
Watershed protection forests	17.1	114.3*
Interaction effects		
Altitude (ln) x Forest limited production		-27.9**
Altitude (ln) x Conservation forests		-1.0
Altitude (ln) x Production forests		-6.6
Altitude (ln) x Watershed protection forests		-18.3*

Standardised coefficients are indicated between brackets; \*\* $P < 0.001$ , \* $P < 0.05$ ; ln, logarithmically transformed.

showed strong multicollinearity with altitude. Finally, three GWR models (Table 2) were computed that did not show multicollinearity; however, Moran's I test of two of these models showed spatial autocorrelation. In the best model ( $R^2$  Adjusted = 0.641,  $P \leq 0.05$ ), the explanatory variables; altitude, distance to the nearest fire, and land allocation zoning were significant, and explained the variation of AGB in the sample with approx. 64% (Table 2). The presence of spatial autocorrelation was unlikely (Index = 0.02, z-score = 1.8,  $P \leq 0.1$ ). In Figure 4 the AGB values observed on the AGB map are plotted against the AGB values predicted by the model. The standardised residuals showed a normal distribution (Range ~ [-3.80; 4.80]), indicating that the normality assumptions underlying multiple regression were met (see Figure S6, in Additional file 1).

### Discussion

In this study, we combined ANOVA, multiple regression and GWR and used multiple thematic spatial data layers to define which biophysical and anthropogenic variables contributed significantly to the spatial AGB variation in a disturbed tropical forest landscape. Altitude showed the strongest relationship with AGB; individually, and in both regression analyses. This strong positive correlation with altitude is supported for other areas by previous studies e.g. [11,27]. In our study, the mean AGB was highest in the higher altitudes where volcanic soils are

**Table 2 Output of the spatial GWR model computed in ArcGIS ( $P < 0.05$ ); \* for each variable (ln, logarithmically transformed) the mean of the coefficients is indicated: the GWR produced for each sample point a local model and variable coefficient**

	Model
$R^2$	0.660
$R^2$ Adjusted	0.637
Response variable:	
Observed mean AGB ( $t\ ha^{-1}$ )	213.6
Predicted mean AGB ( $t\ ha^{-1}$ )	211.9
Explanatory variables:	
Altitude (ln) (mean coefficient)	31.7*
Distance to the nearest fire (ln) (mean coefficient)	8.6*
Land allocation zoning (mean coefficient)	0.17*
Residuals	1.7
Standard Error	46.6
Standardised Residual	0.03

present, and most of the land was allocated to zones where land clearing is not allowed. Moreover, these higher altitudes are less suitable for agriculture and poorly accessible by road. However, by taking into account interaction effects, we found that the influence of altitude on AGB was highest in conservation forest where AGB variation was explained with approx. 86%. It is likely that the forests in these higher, and thus more remote, conservation areas are less impacted by anthropogenic variables, leading to higher AGB densities.

The mean AGB was significantly lower in the lowlands [11,27]. Lowlands are more susceptible to timber extraction, agricultural expansion and mining because of better

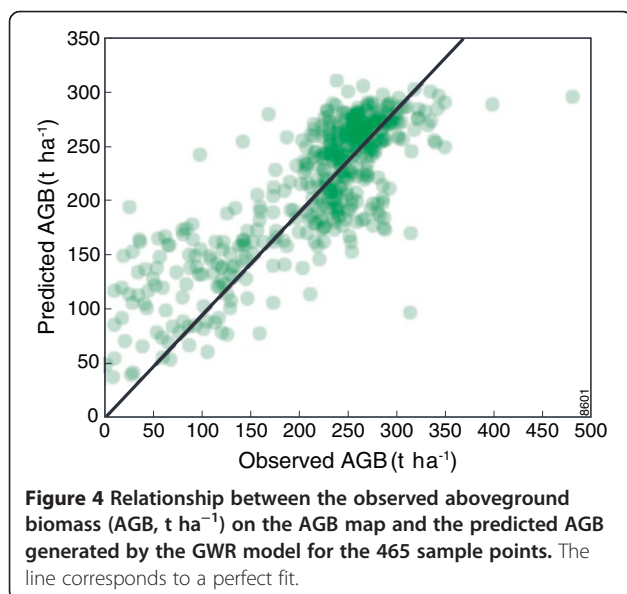
accessibility, and typical land allocation zoning where such activities are allowed. Fire is a commonly-used land-clearing method in Indonesia, and has severely affected the study area [16,48]. Combined with regularly occurring ENSO events, fires that start very locally may quickly spread. In our study, between 2000 and 2008 significantly more fires occurred in the lowlands, and in these burned areas we observed significantly lower AGB [13]. These findings support the results of Fuller *et al.* who found that lowland forests and areas designated for forest conversion in East Kalimantan were more threatened than upland forests and areas not designated for conversion, with slope, elevation, and fire being important factors in determining the threat to forest cover [49].

The contribution of distance to the nearest fire and land allocation zoning is in line with the observations of e.g. Siegert *et al.* [12,16] and Broich *et al.* [31] that fires, logging, and land clearing contribute substantially to forest cover loss and thus to lower AGB values in North and East Kalimantan. Additionally, Broich *et al.* [31] identified a relatively lower forest cover in 2000 within production forest and non-forest-use zones, and the greatest decrease in forest cover between 2000 and 2008, compared to other land allocation zones. In this study, these differences between the land allocation zones are now also shown for AGB, which may support carbon stock estimations.

Previous studies have focused on the effects of biophysical or anthropogenic factors on forest cover in North and East Kalimantan or Borneo. With the exception of Fuller *et al.* [49], most of these studies, however, included only a limited number of variables, and highlighted the influence of land allocation zoning [31]; land use and fire [30]; or logging and logging roads [2]. In this paper, we provided a reconciliation of these seemingly contradicting results and showed that multiple explanatory variables had a significant effect on AGB and were interrelated to one another. Because of these interrelationships, we underline the importance of including a wide range of biophysical and anthropogenic variables.

Most previous studies have incorporated mainly biophysical variables [e.g. 10, 24–26]. In this study we have demonstrated that in disturbed tropical forest landscapes it is essential to include biophysical and anthropogenic variables in AGB quantification and modelling. Also, the identification of anthropogenic factors that negatively impact AGB can support projections about if and where AGB losses may occur in an area.

We found substantially lower mean AGB on peatland soils ( $142\ t\ ha^{-1}$ ), than was found by Budiharta *et al.* [50] for undisturbed peat swamp forests in Borneo ( $348.7\ t\ ha^{-1}$ ). This may indicate strong anthropogenic disturbances in our study area by for example fires, logging or conversion. Next to aboveground biomass,



**Figure 4 Relationship between the observed aboveground biomass (AGB,  $t\ ha^{-1}$ ) on the AGB map and the predicted AGB generated by the GWR model for the 465 sample points. The line corresponds to a perfect fit.**

peatlands also store large amounts of biomass belowground [51,52]. In regions with large areas of peatland, such as Indonesia [52], the inclusion of belowground biomass in addition to AGB may improve carbon stock predictions.

The GWR showed improved model accuracy (~64%) and a similar ranking of variables compared to the multiple regression; however, soil type did not significantly contribute to this model. This may be caused by an underrepresentation of the limited number of sample points across all soil types.

The variables were selected based on expected relations with AGB, but also by data availability. In order to refine this model for applicability in other landscapes, climate variables such as precipitation and temperature, but also infrastructure data such as logging roads and settlements, may be included, if data is available at an appropriate level of detail.

The root mean squared error between the field-estimated AGB and the AGB from the radar map was 10 t ha<sup>-1</sup>. Although generally this is considered low, it may influence the resulting accuracy of the regression models.

AGB does not only vary spatially, but also temporally because of disturbance and regeneration processes. Temporal analysis of AGB could add a valuable dimension to the present approach, by providing insight into the potential increase or decrease of AGB and carbon stocks.

For maintenance and identification of lands with high AGB, many studies have focused on AGB and carbon mapping and modelling using plot-based and remote sensing data [33]. Many analyses, however, use maps with discrete classes of AGB e.g. [12,30], and consequently AGB quantification, or modelling, may not be covering the existing high spatial variation sufficiently. Therefore, we recommend using to use AGB maps with a continuous scale.

Methods such as multiple regression and GWR have been utilised for the analysis of, for example; forest attributes [53], the NDVI–rainfall relationship [54], and even for estimating AGB in a tropical forest area [55]. However, using GWR for generating a better understanding of the biophysical and anthropogenic variables that contribute to the regional spatial variation of AGB, by using an extensive spatial dataset, is a relatively new approach. The advantage of using GWR, compared to non-spatial multiple regression, is that it produces a local model, thus accounting for the spatially varying relationships between AGB and the explanatory variables. Moreover, by using GWR the effects of spatial autocorrelation were minimised.

## Conclusions

Better insights into the spatial variation of AGB are needed to support the maintenance of carbon stocks in

disturbed tropical forested landscapes. In this paper, we analysed how a set of biophysical and anthropogenic variables were related to, and contributed to the spatial variation of AGB in such a landscape. As was expected for disturbed forest conditions, mean AGB was relatively low and varied strongly throughout the landscape.

Through non-spatial and spatial multiple linear regression, we were able to explain this high spatial variation with, respectively, about 59% and 64%. Because of spatial autocorrelation in the standardised residuals of the non-spatial multiple regression, we conducted GWR. The GWR showed that altitude, distance to the nearest fire and land allocation zoning had the largest significant effect on AGB. Our study showed that mean AGB was relatively higher at the higher altitudes, on karst and volcanic soils, with increasing distance from fire hotspots, in limited production forest, and in watershed protection and conservation forests.

Because of the strong effects of these factors on variation in AGB, efforts to minimise carbon emissions, such as REDD+, should incorporate these factors. This can be implemented through maintenance of lands with high carbon stocks or through the utilisation or regeneration of lands with low carbon stocks or AGB. For example, the maintenance of high carbon stocks should be a priority in the aforementioned zones with high AGB values at higher altitudes. Low AGB or carbon stock lands, such as found in the lowlands in burned areas and in non-forest lands and production forests, should be considered for either regeneration or utilisation purposes, dependent on the regeneration capacity of the vegetation. In these lowland areas, the use of fire should be prevented as much as possible. The utilisation of peatlands should be avoided, especially because of the presence of high belowground carbon stocks. In our study, the variation in AGB was less affected by proximity of roads, rivers and cities.

The high correlations between the explanatory variables showed that the variables were interrelated and thus that AGB variation cannot be explained by one single variable. Instead, spatial analyses should integrate a variety of biophysical and anthropogenic variables to provide a better understanding of spatial variation in AGB.

## Methods

### Study area

The natural resource-rich provinces of North and East Kalimantan (North Kalimantan was established on 25 October 2012 and was previously part of East Kalimantan) have a high spatial variation in biophysical and anthropogenic conditions and processes. For use in this study, the provinces are regarded as one case study region. The terrain consists of undulating slopes and altitudes up to about 2,200 m. Karst and peatlands occur

mainly in the lowlands (respectively, ~2% and ~4). The remaining landscape consists mainly of volcanic soils and other soil types (respectively, ~7% and 87%). This landscape is highly dynamic with regard to its past, current and expected land use changes. Until the early 1970s, the original land cover in the lowlands of North and East Kalimantan consisted of extensive dipterocarp forests with high AGB and species richness [18], but driven by forest and land development policies in the 1980s, large-scale degradation, deforestation and conversion to agricultural land have taken place [48]. The main activities were high intensity logging [48], but also large-scale forest fires occurred that were often initiated for land clearing purposes [13,16,48,56], and events associated with El Niño Southern Oscillation (ENSO) [57]. In 1997–98, again very destructive fires related to ENSO occurred, burning 5.2 million ha of North and East Kalimantan's pristine and logged forests. Hoffmann *et al.* [58] have found that approx. 75% of the burned forests were allocated for logging, timber or oil palm concessions. The frequency and spatial extension of fires have increased over the last few decades in North and East Kalimantan because of deforestation and degradation processes associated with logging, mining and agriculture, and intensifying droughts related to ENSO events [13].

#### Selection of variables and proxy data layers

An overview of the method is given in Figure 1. We included multiple biophysical and anthropogenic variables in the analyses, based on data at a regional scale so that the interrelationships between the explanatory variables could be accounted for. In Figure 5, a landscape-scale view on the data layers is presented in which the landscape-scale pattern for each variable is visible. The use of spatial data enabled the analyses of AGB and several explanatory variables on a continuous scale. The initial selection of the explanatory variables was based on a literature review, field visits, visual examination of spatial data and data availability (for Data sources, see Table S7 and Appendix S8, in Additional file 1).

*The AGB map* (Figure 5a) is based on ALOS PALSAR-LiDAR data and plot-based measurements [38]. Disturbed tropical forest landscapes such as North and East Kalimantan are often covered by clouds or haze. Radar remote sensing is not affected by clouds and has proven to be a remote sensing system responsive to AGB [36,59]. Saturation of the radar signal at medium AGB levels ( $150 \text{ t ha}^{-1}$ ) restricts the use of radar remote sensing for a direct radar image inversion into AGB maps. A radar-based forest type map is used in combination with estimated vegetation heights per land cover type, derived from Geoscience Laser Altimeter System (GLAS) LiDAR data, to overcome such saturation effects. This resulted in an AGB map with a resolution of 50 m. Available

vegetation height-AGB allometric equations were used to invert heights into AGB values per pixel, overcoming the effect of radar saturation. An accuracy assessment of the AGB map was conducted using field measurements over 54 plots of 0.2 ha over a range of degraded forest types in the study area. AGB values were estimated using the allometric equation developed by Saatchi *et al.* [38,39]. The accuracy of the AGB map is estimated as  $10 \text{ t ha}^{-1}$ , using the root mean squared error between the field-estimated AGB and the AGB from the radar map for the same location. For more information see Quiñones *et al.* [38].

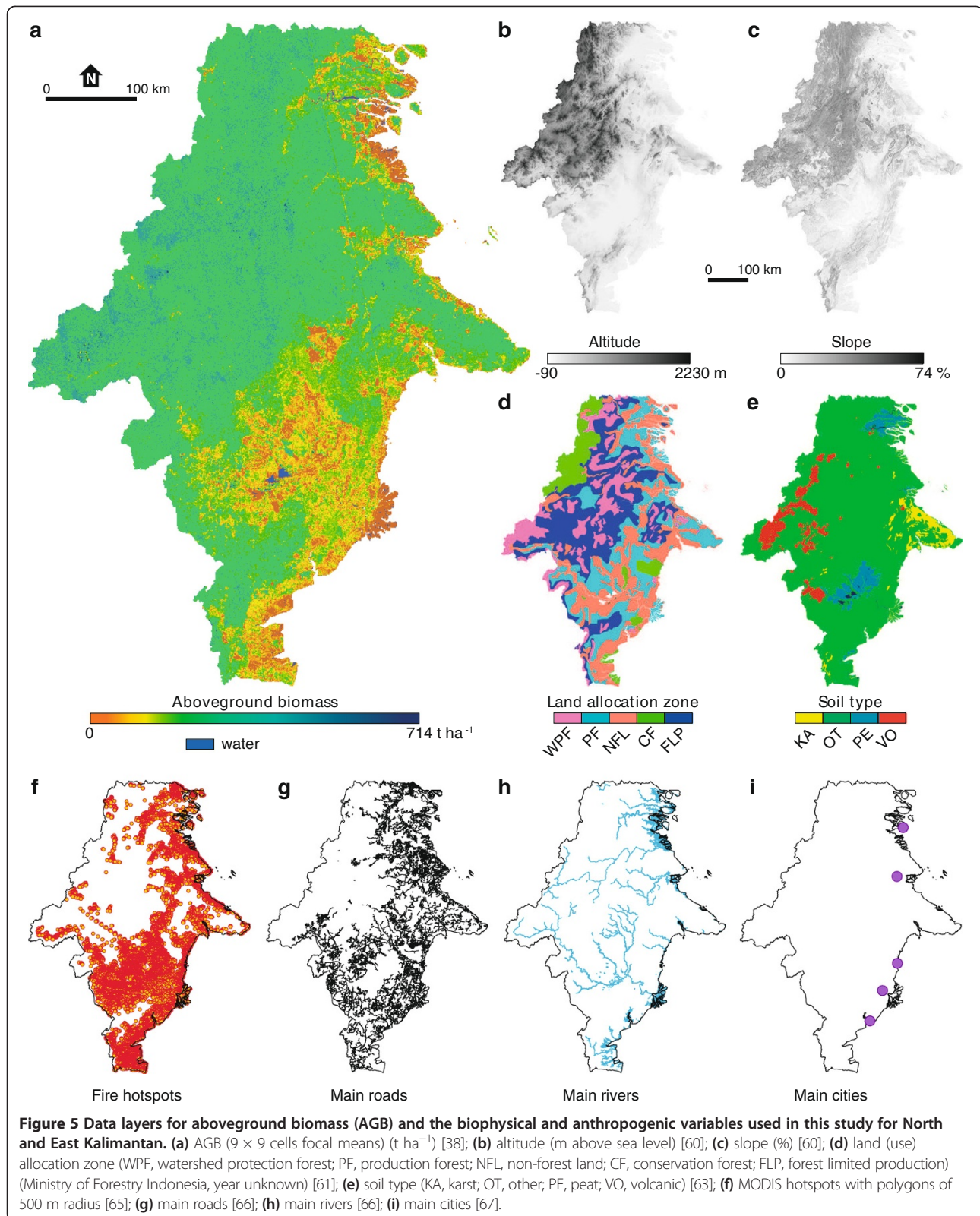
*Altitude* (Figure 5b) varied from  $-90 \text{ m}$  –  $2,230 \text{ m}$  in the landscape and was selected because a relationship with AGB is expected [11,25–27]. *Slope* (Figure 5c) was found to have a positive relationship with AGB [8]. Altitude and slope were derived from the Digital Elevation Model (90 m) by the Shuttle Radar Topography Mission (SRTM-DEM) [60]. For the multiple linear regression and GWR, altitude was included as a continuous variable. For the ANOVA, altitude was categorised into several altitude ranges (Lowlands  $<750 \text{ m}$ ; Midlands  $750\text{--}1,500 \text{ m}$ ; Highlands  $>1,500 \text{ m}$ ) (see Appendix S9 in Additional file 1).

*Logging and land conversion* decreases AGB substantially by the harvesting and loss of especially rare tree species [13]. Therefore a relationship is expected between AGB and logging intensity, and thus differences in AGB between protected forested areas, areas allocated for timber or forest concessions, and non-forest land. The data source selected is the land (use) allocation zoning data (Figure 5d) classified by WRI and originally produced by the Ministry of Forestry of Indonesia within the Tata Guna Hutan Kesepakatan (TGHK) mapping program (Ministry of Forestry Indonesia, year unknown) as a proxy for logging and land clearance intensity. The classes designated within this data layer and present in the study area are: 'forest limited production', where logging is accompanied by measures to reduce impacts on soil erosion; 'conservation forest', which is conservation forest for protected areas; 'watershed protection forest', which is intended for watershed protection; 'non-forest land' has the status of non-forest use; and 'production forest', which is intended for commercial logging [31,62].

Relationships were reported between AGB and soil drainage [26], soil texture [11], and soil fertility [23,24]. *Soil type* (Figure 5e) was selected as a proxy, and was included by reclassifying the improved reproduction of the RePPPProT land systems map [63] into the categories 'karst', 'peat', 'volcanic', and 'other' (for details see Appendices S8 and S9 in Additional file 1).

*Forest fires* (Figure 5f) can occur multiple times at the same spot and in this way can cause substantial losses in AGB [12,13,64]. Also the rate of post-fire regeneration depends, amongst others, on the frequency and age of the fire [13,18]. The proxy for fire included in the multiple





linear regression and GWR was 'distance to the nearest fire'. For the fire data MODIS hotspot data from 2000 to 2008 were used [65], because of its high accuracy

recording. According to NASA, each MODIS fire hotspot represents the centre point of a  $\sim 1$  km pixel that contains one or more fires, rather than the exact location of a fire.

To overcome this uncertainty, a buffer of 500 m radius surrounding each location was created to define fire hotspot polygons. Additionally, for the ANOVA the fire variable was categorised as burned ( $\leq 500$  m from a hotspot; i.e. the area within a fire polygon), and non-burned areas ( $> 500$  m from a hotspot, i.e. the area outside a fire polygon) (see Appendix S9, in Additional file 1).

Both *roads* (Figure 5g) and *rivers* (Figure 5h) are the primary means of transportation in North and East Kalimantan, and improve accessibility from *cities* (Figure 5i) to forest frontier areas. Therefore, a relationship is expected between AGB and the proxy distance to nearest main road [66], the nearest main river [66] and the nearest main city [67].

### Data pre-processing

In order to reduce the high local-scale variation in AGB caused by natural local variation and by the effect of speckle noise, 9 x 9 cell focal mean statistics was applied to the AGB map in ArcGIS, according to the results generated by Hoekman and Quiñones [68]. All shapefiles were rasterised, and the proximity variables were individually processed by means of the Euclidean Distance tool of the ArcGIS Spatial analyst. For optimal processing, a sample of 500 data points was selected randomly in the data layers with a minimum distance of 1,000 m from one another to minimise the effects spatial autocorrelation ([69]. The data layers were combined and all data queries were exported to a database in SPSS 20. Rows with missing values were deleted, resulting in a dataset of 465 data points.

The continuous explanatory variables showing a skewed distribution were transformed to attain normality. Natural logarithmic (ln) data transformation was in all cases the most suitable of a series of transformations tested for attaining a linear relationship between AGB and the explanatory variables.

### Statistical analyses

Using the Pearson's correlation coefficient, the strength and direction of the predictive relationship between AGB and each of the continuous explanatory variables were defined. We conducted One-way ANOVA to analyse whether mean AGB among soil types and land allocation zones, among different altitudinal ranges, and between burned and unburned areas was significantly different.

Non-spatial backward multiple linear regression was conducted, and with every step non-significant ( $p \geq 0.05$ ) variables were removed one-by-one. The categorical variables land allocation zoning and soil type were included as dummy variables with, respectively, 'non-forest land', and 'other' as the reference categories. Because land is allocated by the Ministry of Forestry of Indonesia based

on climate, slope and soil type, tests for an interaction effect between land allocation zoning and altitude were carried out, by inclusion of product terms in the multiple linear regression [70].

To verify whether the output met the assumptions underlying multiple linear regression, tests for normality and multicollinearity were carried out. To test for normality, we plotted a histogram, a normal PP plot and a normal QQ plot of the standardised residuals. We tested for the presence of significant strong multicollinearity by examining the Tolerance.

Analysing ecological spatial data by multiple linear regression is challenging (e.g. [54,71], because of the possible existence of spatial autocorrelation and spatial non-stationarity, the latter being the variation in relationships and processes over space. Spatial non-stationarity was tested for by conducting the Breusch-Pagan test on random coefficients. Although often ignored, spatial autocorrelation or the spatial clustering of ecological conditions and processes is a natural, and thus widespread phenomenon [69]. Bini *et al.* [72] indicate that this can cause an unexplained shift in the regression coefficients of global or non-spatial models. To test for the presence of spatial autocorrelation, the Moran's I Index, the z-score and the p-value for the standardised residuals were calculated. If spatial autocorrelation was present, we additionally conducted GWR in ArcGIS. GWR is a spatial and local form of multiple linear regression that considers and models the spatially varying relationships between explanatory variables and the response variable [53-55]. The explanatory variables that showed multicollinearity were excluded from the model.

### Additional file

**Additional file 1: Figure S1.** Frequency distribution of aboveground biomass in the sample. **Table S2.** Descriptive statistics of the data. **Table S3.** Correlation matrix for the combination of all continuous variables. **Figure S4.** Interaction effects between altitude and land allocation zoning. **Figure S5.** Frequency distribution, PP plot and QQ plot of the standardised residuals of the multiple linear regression. **Figure S6.** Frequency distribution of the standardised residuals of the GWR. **Table S7.** Overview of the variables and the data selected. **Appendix S8.** Data sources. **Appendix S9.** Categorisation of the variables.

### Competing interests

The authors declare that they have no competing interests.

### Authors' contributions

Authors: (CL), (PV), (MQ), (AF). The authors have made substantial contributions to conception and design: CL, PV or acquisition of data: CL, MQ or analyses: CL interpretation of data: CL, PV have been involved in drafting the manuscript: CL revising it critically for important intellectual content: PV, AF, MQ have given final approval of the version to be published: CL, PV, MQ, AF agree to be accountable for all aspects of the work in ensuring that questions related to the accuracy or integrity of any part of the work are appropriately investigated and resolved: CL, PV, MQ, AF. All authors read and approved the final manuscript.

## Acknowledgements

The authors are grateful to Dr. Dirk Hoekman (Wageningen University) and Niels Wieland (SarVision) for the AGB map and valuable discussions. The ALOS PALSAR data used in this paper have been provided by JAXA EORC within the framework of the JAXA Kyoto & Carbon Initiative. ALOS PALSAR data courtesy ALOS K&C © JAXA/METI. We thank Inge Kies, Rianne Visser, Leah Sazer-Krebbbers and late Nina Schellinx for the AGB plot data collection. We are very grateful to Universitas Gadjah Mada, Universitas Mulawarman, The World Agroforestry Centre (ICRAF) in Bogor, and World Wide Fund for Nature in Jakarta and Samarinda for valuable support; Maarten Zeylmans for GIS-support; Derek Karssenberg for advice on the spatial analyses; Paul Westers and Mara Ding for statistical advice; and Ton Markus for optimizing the lay out of the figures. This project was funded by the Agriculture beyond Food Programme of NWO (Netherlands Organization for Scientific Research)/WOTRO (Science for Global Development) and KNAW (Royal Netherlands Academy of Arts and Sciences).

## Author details

<sup>1</sup>Copernicus Institute of Sustainable Development, Group Energy and Resources, Utrecht University, Heidelberglaan 2, 3584 CS Utrecht, The Netherlands. <sup>2</sup>SarVision BV, Agro Business Park 10, 6708 PW Wageningen, The Netherlands.

Received: 10 March 2014 Accepted: 4 September 2014

## References

1. Van der Werf GR, Morton DC, DeFries RS, Olivier JGJ, Kasibhatla PS, Jackson RB, Collatz GJ, Randerson JT: **CO<sub>2</sub> emissions from forest loss.** *Nat Geosci* 2009, **2**:737–738.
2. Gaveau DLA, Sloan S, Molideña E, Yaen H, Sheil D, Abram NK, Ancrenaz M, Nasi R, Quinones M, Wieland N, Meijaard E: **Four Decades of Forest Persistence, Clearance and Logging on Borneo.** *PLoS One* 2014, **9**:e101654.
3. East Kalimantan's Green Growth Journey, *Presentation at the GCF Taskforce Annual Meeting*, Palangka Raya, Central Kalimantan, Indonesia, Sept. 20–22, 2011. Available upon request at the Governors' Climate and Forests Task Force Indonesia (<http://www.gcftaskforce.org/events>).
4. *About the UN-REDD Programme, UN-REDD*; [[www.un-redd.org/AboutREDD/tabid/102614/Default.aspx](http://www.un-redd.org/AboutREDD/tabid/102614/Default.aspx)] Accessed: January 2014.
5. Wicke B, Sikkema R, Dornburg V, Faaij A: **Exploring land use changes and the role of palm oil production in Indonesia and Malaysia.** *Land Use Policy* 2011, **28**:193–206.
6. Smit HH, Meijaard E, Van der Laan C, Mantel S, Budiman A, Verweij PA: **Breaking the Link between Environmental Degradation and Oil Palm Expansion: A Method for Enabling Sustainable Oil Palm Expansion.** *PLoS One* 2013, **8**:e68610.
7. Chave J, Riera B, Dubois MA: **Estimation of biomass in a neotropical forest of French Guiana: spatial and temporal variability.** *J Trop Ecol* 2001, **17**:79–96.
8. Chave J, Condit R, Lao S, Caspersen JP, Foster RB, Hubbell SP: **Spatial and temporal variation of biomass in a tropical forest: results from a large census plot in Panama.** *J Ecol* 2003, **91**:240–252.
9. Baker T, Phillips O, Malhi Y: **Variation in wood density determines spatial patterns in Amazonian forest biomass.** *Glob Chang Biol* 2004, **10**:545–562.
10. Houghton R: **Aboveground Forest Biomass and the Global Carbon Balance.** *Glob Chang Biol* 2005, **11**:945–958.
11. De Castilho CV, Magnusson WE, de Araújo RNO, Luizão RCC, Luizão FJ, Lima AP, Higuchi N: **Variation in aboveground tree live biomass in a central Amazonian Forest: Effects of soil and topography.** *For Ecol Manag* 2006, **234**:85–96.
12. Page S, Siebert F, Rieley J, Boehm H: **The amount of carbon released from peat and forest fires in Indonesia during 1997.** *Nature* 1999, **2002**:61–65.
13. Slik JWF, Bernard CS, Van Beek M, Breman FC, Eichhorn KAO: **Tree diversity, composition, forest structure and aboveground biomass dynamics after single and repeated fire in a Bornean rain forest.** *Oecologia* 2008, **158**:579–588.
14. Berry NJ, Phillips OL, Lewis SL, Hill JK, Edwards DP, Tawatao NB, Ahmad N, Magintan D, Khen CV, Maryati M, Ong RC, Hamer KC: **The high value of logged tropical forests: lessons from northern Borneo.** *Biodivers Conserv* 2010, **19**:985–997.
15. Kronseder K, Ballhorn U, Böhm V, Siebert F: **Above ground biomass estimation across forest types at different degradation levels in Central Kalimantan using LiDAR data.** *Int J Appl Earth Observation Geoinformation* 2012, **18**:37–48.
16. Siebert F, Ruecker G, Hinrichs A, Hoffmann AA: **Increased damage from fires in logged forests during droughts caused by El Niño.** *Nature* 2001, **414**:437–440.
17. Slik JWF, Verburg RW, Keßler PJA: **Effects of fire and selective logging on the tree species composition of lowland dipterocarp forest in East Kalimantan, Indonesia.** *Biodiversity & Conservation* 2002, **11**:85–98.
18. Toma T, Ishida A, Matus P: **Long-term monitoring of post-fire aboveground biomass recovery in a lowland dipterocarp forest in East Kalimantan, Indonesia.** *Nutr Cycl Agroecosyst* 2005, **71**:63–72.
19. Matricardi EAT, Skole DL, Pedlow MA, Chomentowski W, Fernandes LC: **Assessment of tropical forest degradation by selective logging and fire using Landsat imagery.** *Remote Sens Environ* 2010, **114**:1117–1129.
20. Hashimoto T, Kojima K, Tange T, Sasaki S: **Changes in carbon storage in fallow forests in the tropical lowlands of Borneo.** *For Ecol Manag* 2000, **126**:331–337.
21. Brown S: **Estimating Biomass and Biomass Change of Tropical Forests: A Primer.** *FAO Forestry Paper* 1997, **134**:55.
22. Feldpausch TR, Lloyd J, Lewis SL, Brienens RJW, Gloor M, Monteagudo Mendoza A, Lopez-Gonzalez G, Banin L, Abu Salim K, Affum-Baffoe K, Alexiades M, Almeida S, Amaral I, Andrade A, Aragão LEOC, Araujo Murakami A, Arets EJMM, Arroyo L, Aymard CGA, Baker TR, Bánki OS, Berry NJ, Cardozo N, Chave J, Comiskey JA, Alvarez E, de Oliveira A, Di Fiore A, Djagbletey G, Domingues TF, et al: **Tree height integrated into pantropical forest biomass estimates.** *Biogeosciences* 2012, **9**:3381–3403.
23. Laurance WF, Fearnside PM, Laurance SG, Delamonica P, Lovejoy TE, Rankin-de Meroni JM, Chambers JQ, Gascon C: **Relationship between soils and Amazon forest biomass: a landscape-scale study.** *For Ecol Manag* 1999, **118**:127–138.
24. Paoli GD, Curran LM, Slik JWF: **Soil nutrients affect spatial patterns of aboveground biomass and emergent tree density in southwestern Borneo.** *Oecologia* 2008, **155**:287–299.
25. Whittaker R, Bormann F: **The Hubbard Brook ecosystem study: forest biomass and production.** *Ecol Monogr* 1974, **44**:233–254.
26. Asner GP, Flint Hughes R, Varga TA, Knapp DE, Kennedy-Bowdoin T: **Environmental and Biotic Controls over Aboveground Biomass Throughout a Tropical Rain Forest.** *Ecosystems* 2008, **12**:261–278.
27. Alves LF, Vieira SA, Scaranello MA, Camargo PB, Santos FAM, Joly CA, Martinelli LA: **Forest structure and live aboveground biomass variation along an elevational gradient of tropical Atlantic moist forest (Brazil).** *For Ecol Manag* 2010, **260**:679–691.
28. Ferry B, Morneau F, Bontemps J-D, Blanc L, Freycon V: **Higher treefall rates on slopes and waterlogged soils result in lower stand biomass and productivity in a tropical rain forest.** *J Ecol* 2010, **98**:106–116.
29. Van Nieuwstadt M, Van Sheil D: **Drought, fire and tree survival in a Borneo rain forest, East Kalimantan, Indonesia.** *J Ecol* 2005, **93**:191–201.
30. Dennis RA, Colfer CP: **Impacts of land use and fire on the loss and degradation of lowland forest in 1983–2000 in East Kutai District, East Kalimantan, Indonesia.** *Singap J Trop Geogr* 2006, **27**:30–48.
31. Broich M, Hansen M, Stolle F, Potapov P, Margono BA, Adusei B: **Remotely sensed forest cover loss shows high spatial and temporal variation across Sumatera and Kalimantan, Indonesia 2000–2008.** *Environ Res Lett* 2011, **6**:1–9.
32. Brown S, Iverson LR, Prasad A, Liu D: **Geographical distributions of carbon in biomass and soils of tropical Asian forests.** *Geocarto Int* 1993, **4**:45–59.
33. Gibbs HK, Brown S, Niles JO, Foley JA: **Monitoring and estimating tropical forest carbon stocks: making REDD a reality.** *Environ Res Lett* 2007, **2**:045023.
34. Yang C, Huang H, Wang S: **Estimation of tropical forest biomass using Landsat TM imagery and permanent plot data in Xishuangbanna, China.** *Int J Remote Sens* 2011, **32**:5741–5756.
35. Mitchard ETA, Saatchi SS, White LJT, Abernethy KA, Jeffery KJ, Lewis SL, Collins M, Lefsky MA, Leal ME, Woodhouse IH, Meir P: **Mapping tropical forest biomass with radar and spaceborne LIDAR: overcoming problems of high biomass and persistent cloud.** *Biogeosci Discuss* 2011, **8**:8781–8815.
36. Morel AC, Saatchi SS, Malhi Y, Berry NJ, Banin L, Burslem D, Nilus R, Ong RC: **Estimating aboveground biomass in forest and oil palm plantation in Sabah, Malaysian Borneo using ALOS PALSAR data.** *For Ecol Manag* 2011, **262**:1786–1798.

37. Enghart S, Keuck V, Siegert F: **Aboveground biomass retrieval in tropical forests — The potential of combined X- and L-band SAR data use.** *Remote Sens Environ* 2011, **115**:1260–1271.
38. Quiñones MJ, Schut V, Wielaard N, Hoekman D: **Above Ground Biomass map Kalimantan 2008 - Final report.** *SarVision Wageningen* 2011, 1-34. Downloaded on 15-09-2012 from: [http://www.globallandusechange.org/tl\_files/glcfiles/wwf/Sulu%20Reports/Sarvision%20Report%20to%20Kalimantan%20AGB%20Maps.pdf]
39. Saatchi SS, Harris NL, Brown S, Lefsky M, Mitchard ETA, Salas W, Zutta BR, Buermann W, Lewis SL, Hagen S, Petrova S, White L, Silman M, Morel A: **Benchmark map of forest carbon stocks in tropical regions across three continents.** *Proc Natl Acad Sci U S A* 2011, **108**:9899–9904.
40. Houghton R, Skole DL, Nobre CA, Hackler JL, Lawrence KT, Chomentowski WH: **Annual fluxes of carbon from deforestation and regrowth in the Brazilian Amazon.** *Nature* 2000, **403**:301–304.
41. DeFries RS, Houghton RA, Hansen MC, Field CB, Skole D, Townshend J: **Carbon emissions from tropical deforestation and regrowth based on satellite observations for the 1980s and 1990s.** *Proc Natl Acad Sci U S A* 2002, **99**:14256–14261.
42. Carlson KM, Curran LM, Ratnasari D, Pittman AM, Soares-Filho BS, Asner GP, Trigg SN, Gaveau DA, Lawrence D, Rodrigues HO: **Committed carbon emissions, deforestation, and community land conversion from oil palm plantation expansion in West Kalimantan, Indonesia.** *Proc Natl Acad Sci U S A* 2012, **109**:7559–7564.
43. Morel AC, Fisher JB, Malhi Y: **Evaluating the potential to monitor aboveground biomass in forest and oil palm in Sabah, Malaysia, for 2000–2008 with Landsat ETM+ and ALOS-PALSAR.** *Int J Remote Sens* 2012, **33**:3614–3639.
44. Saatchi SS, Houghton RA, Dos Santos Alvalá RC, Soares JV, Yu Y: **Distribution of aboveground live biomass in the Amazon basin.** *Glob Chang Biol* 2007, **13**:816–837.
45. Asner GP, Powell GVN, Mascaro J, Knapp DE, Clark JK, Jacobson J, Kennedy-Bowdoin T, Balaji A, Paez-Acosta G, Victoria E, Secada L, Valqui M, Hughes RF: **High-resolution forest carbon stocks and emissions in the Amazon.** *Proc Natl Acad Sci U S A* 2010, **107**:16738–16742.
46. Mitchard ETA, Saatchi SS, Lewis SL, Feldpausch TR, Woodhouse IH, Sonké B, Rowland C, Meir P: **Measuring biomass changes due to woody encroachment and deforestation/degradation in a forest–savanna boundary region of central Africa using multi-temporal L-band radar backscatter.** *Remote Sens Environ* 2011, **115**:2861–2873.
47. Langner A, Samejima H, Ong RC, Titin J, Kitayama K: **Integration of carbon conservation into sustainable forest management using high resolution satellite imagery: A case study in Sabah, Malaysian Borneo.** *Int J Appl Earth Observation Geoinformation* 2012, **18**:305–312.
48. Murdiyarso D, Adiningsih ES: **Climate anomalies, Indonesian vegetation fires and terrestrial carbon emissions.** *Mitig Adapt Strateg Glob Chang* 2006, **12**:101–112.
49. Fuller DO, Meijaard EM, Christy L, Jessup TC: **Spatial assessment of threats to biodiversity within East Kalimantan, Indonesia.** *Appl Geogr* 2010, **30**:416–425.
50. Budiharta S, Slik F, Raes N, Meijaard E, Erskine PD, Wilson KA: **Estimating the Aboveground Biomass of Bornean Forest.** *Biotropica* 2014, **0**:1–5.
51. Fargione J, Hill J, Tilman D, Polasky S, Hawthorne P: **Land clearing and the biofuel carbon debt.** *Science* 2008, **319**:1235–1238.
52. PAGE SE, RIELEY JO, BANKS CJ: **Global and regional importance of the tropical peatland carbon pool.** *Glob Chang Biol* 2011, **17**:798–818.
53. Wang Q, Ni J, Tenhunen J: **Application of a geographically-weighted regression analysis to estimate net primary production of Chinese forest ecosystems.** *Glob Ecol Biogeogr* 2005, **14**:379–393.
54. Foody GM: **Geographical weighting as a further refinement to regression modelling: An example focused on the NDVI–rainfall relationship.** *Remote Sens Environ* 2003, **88**:283–293.
55. Propastin P: **Modifying geographically weighted regression for estimating aboveground biomass in tropical rainforests by multispectral remote sensing data.** *Int J Appl Earth Observation Geoinformation* 2012, **18**:82–90.
56. Siegert F, Hoffmann AA: **The 1998 Forest Fires in East Kalimantan (Indonesia): A Quantitative Evaluation Using High Resolution, Multitemporal ERS-2 SAR Images and NOAA-AVHRR Hotspot Data.** *Remote Sens Environ* 2000, **72**:64–77.
57. Priadhati A: **Dipterocarpaceae: Forest Fires and Forest Recovery.** In *Wageningen University. Tropenbos-Kalimantan series* 8. Wageningen, The Netherlands: Tropenbos International; 2002:1–214.
58. Hoffmann AA, Hinrichs A, Siegert F: **Fire damage in East Kalimantan in 1997/98 related to land use and vegetation classes: Satellite radar inventory results and proposals for further actions.** *IFFM/SFMP GTZ* 1999, 1–26.
59. Mitchard ETA, Saatchi SS, Woodhouse IH, Nangendo G, Ribeiro NS, Williams M, Ryan CM, Lewis SL, Feldpausch TR, Meir P: **Using satellite radar backscatter to predict above-ground woody biomass: A consistent relationship across four different African landscapes.** *Geophys Res Lett* 2009, **36**:L23401.
60. Shuttle Radar Topography Mission NASA; 2012. [NASA: http://www2.jpl.nasa.gov/srtm/]
61. Ministry of Forestry Indonesia (year unknown): *Kawasan Hutan (Forest estate) land use maps, General Direktorat of Planning, Ministry of Forestry*; downloaded from http://appgis.dephut.go.id/appgis/kml.aspx. Processed and provided by Greenpeace. Prepared by the World Resources Institute (2012).
62. Brockhaus M, Obidzinski K, Dermawan A, Laumonier Y, Luttrell C: **An overview of forest and land allocation policies in Indonesia: Is the current framework sufficient to meet the needs of REDD+?** *Forest Policy Econ* 2012, **18**:30–37.
63. Consortium to Revise the HCV Toolkit for Indonesia: *Toolkit for identification of high conservation values in Indonesia.* Jakarta, Indonesia: Digital Appendix 12. Ecosystem proxy shapefiles for Kalimantan ver 1.0; 2008.
64. Cochrane MA: **Fire science for rainforests.** *Nature* 2003, **421**:913–919.
65. NASA/LANCE – FIRMS: *MODIS Hotspot / Active Fire Detections. Data set*; 2011. Acquired on 17-09-2012 online http://earthdata.nasa.gov/data/nrtdata/firms.
66. Bakosurtanal: Bakosurtanal, the Indonesian National Coordinating Agency for Surveys and Mapping (http://www.bakosurtanal.go.id). Data available in: Minnemeyer S, Boisrobert L, Stolle F, Muliastira YIKD, Hansen M, Arunarwati B, Prawijuwiri G, Purwanto J, Awaliyan R: *Interactive Atlas of Indonesia's Forests CD-ROM 2009.* Washington, DC: World Resources Institute; 2009.
67. CIESIN: *Center for International Earth Science Information Network, Columbia University; International Food Policy Research Institute (IFPRI); The World Bank; Centro Internacional de Agricultura Tropical (CIAT)*; 2012. http://sedac.ciesin.columbia.edu/gpw/.
68. Hoekman DH, Quiñones MJ: **Land cover type and biomass classification using AirSAR data for evaluation of monitoring scenarios in the Colombian Amazon.** *IEEE Trans Geosci Remote Sens* 2000, **38**:685–696.
69. Koenig W: **Spatial autocorrelation of ecological phenomena.** *Trends Ecol Evol* 1999, **14**:22–26.
70. Allison P: **Testing for interaction in multiple regression.** *Am J Sociol* 1977, **83**:144–153.
71. Graham MH: **Confronting multicollinearity in ecological multiple regression.** *Ecology* 2003, **84**:2809–2815.
72. Bini LM, Diniz-Filho JAF, Rangel TFLVB, Akre TSB, Albaladejo RG, Albuquerque FS, Aparicio A, Araújo MB, Baselga A, Beck J, Isabel Bellocq M, Böhning-Gaese K, Borges PAV, Castro-Parga I, Khen Chey V, Chown SL, de Marco P Jr, Dobkin DS, Ferrer-Castán D, Field R, Filloy J, Fleishman E, Gómez JF, Hortal J, Iverson JB, Kerr JT, Daniel Kissling W, Kitching IJ, León-Cortés JL, Lobo JM, et al: **Coefficient shifts in geographical ecology: an empirical evaluation of spatial and non-spatial regression.** *Ecography* 2009, **32**:193–204.

doi:10.1186/s13021-014-0008-z

**Cite this article as:** Van der Laan et al.: Analysis of biophysical and anthropogenic variables and their relation to the regional spatial variation of aboveground biomass illustrated for North and East Kalimantan, Borneo. *Carbon Balance and Management* 2014 **9**:8.