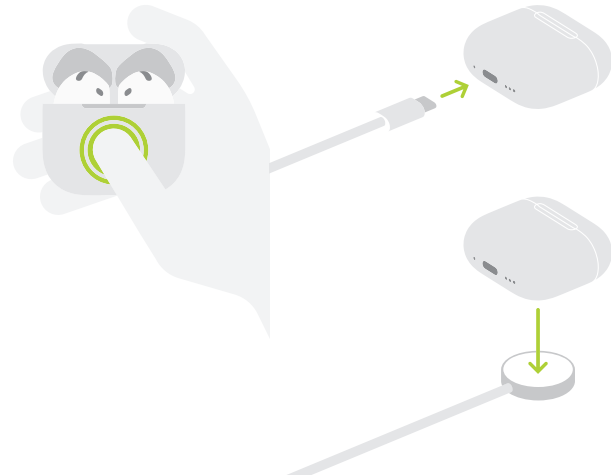




 **Press and hold**
to switch between
listening modes.
按住不放
來切換聆聽模式。



 **Double-tap with
case open** to connect to
other devices.
打開盒蓋
並點兩下來連接
其他裝置。



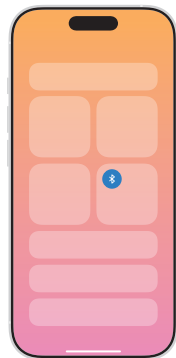
AirPods
Active Noise Cancellation



1

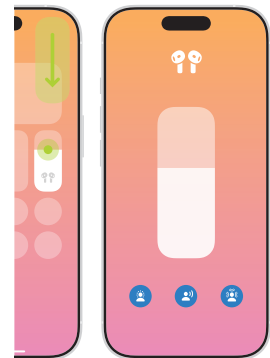
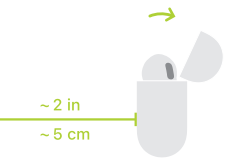
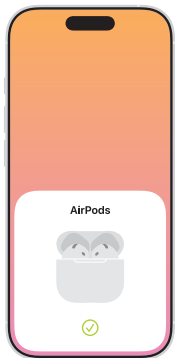


2



 Turn on Bluetooth®.
開啟藍牙。

3



-  Noise Control
噪音控制
-  Conversation Awareness
對話感知
-  Spatial Audio
空間音訊

Scan to learn more in the
AirPods User Guide.
掃描以在
AirPods 使用手冊中瞭解更多資訊。

