

Fraction of Historical+RCP8.5 realizations exceeding the baseline mean

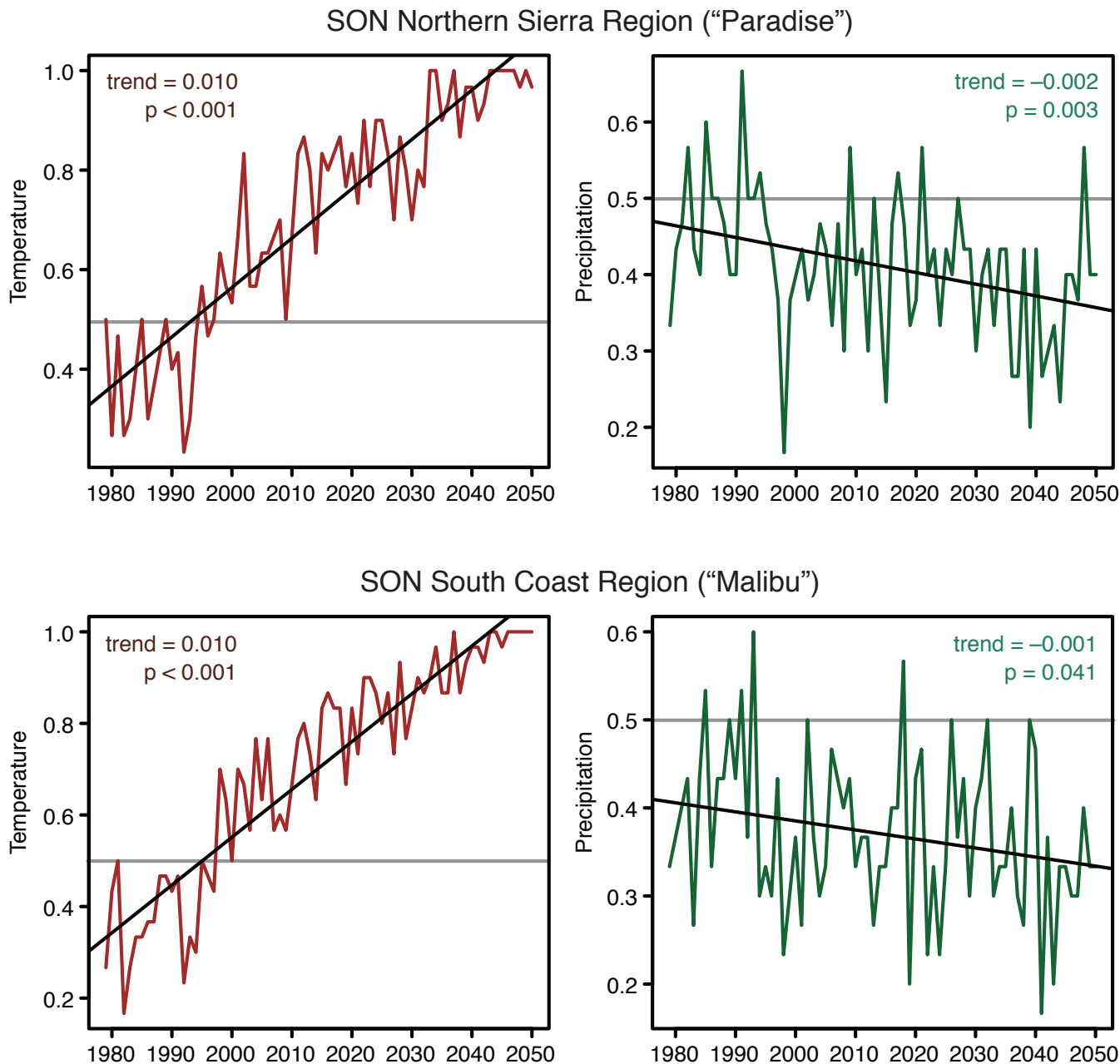


Figure S2. Climate model simulations of historical and future periods. Time series plots show the percentage of the CMIP5 realizations for which autumn precipitation (left column) and temperature (right column) are above the IPCC baseline for the Northern Sierra (“Paradise”; top) and South Coast (“Malibu”; bottom) regions over the period 1979-2050. The trend lines and p-values are calculated using the method described in Singh et al. (2014), which uses block bootstrapping to account for temporal dependency in the timeseries (see Methods).