



SOCIAL EMOTIONAL PROGRAMMING

**The SEL Agenda to Enforce
Thought Reform, Conformity, and
Control**

Stella Morabito -- www.stellamorabito.net

Stella Morabito, LLC

September 26, 2017, Child Protection League, Bloomington, MN

WE NEED TO FOCUS ON THE **PROCESS** RATHER THAN
THE **CONTENT**.

THE **PROCESS** IS ABOUT THOUGHT REFORM AND
BEHAVIOR MODIFICATION.

The content of SEL – politically correct agenda items like transgenderism, for example – is **SECONDARY**. The contents are vehicles to promote an authoritarian agenda, which is **CONTROL** of everybody's language, everybody's thoughts, and everybody's behavior. And therefore everybody's **RELATIONSHIPS**.



MY FOUR TAKEAWAYS:

1. THE AIM: SEL SERVES A STATIST AGENDA TO CONTROL AND REGULATE ALL PERSONAL RELATIONSHIPS
2. THE “SOFTWARE” or the WAYS – The Methods of Achieving that Control: MANIPULATING THE PRIMAL HUMAN FEAR OF SOCIAL ISOLATION
3. THE “HARDWARE” or the MEANS – THE TOOLS and MACHINERY – PROPAGANDA, POLITICAL CORRECTNESS AND THOUGHT REFORM.
4. THE SOLUTION: 1.) UNDERSTAND THE GAME THEN GROW A REVERSE RIPPLE EFFECT BY DE-COCOONING & SPEAKING UP ONE PERSON AT A TIME.



PART I

SEL's ULTIMATE EFFECT:

CONTROL OVER ALL

PERSONAL RELATIONSHIPS

Relationships, Power, and Freedom

- Personal relationships are the source of all knowledge
- Therefore, our relationships are the source of all power
- As long as we can nurture our own relationships, they are the source of all freedom
- If, however, we are not able to create relationships, then we are put into a form of isolation

My blog at stellamorabito.net is dedicated to understanding that our personal relationships are the main source of power.

SCREENSHOT FROM CASEL “FAQs” on www.casel.org/faqs

Why is SEL essential to the school and life success of all children and youth? ^

Our emotions and relationships affect how and what we learn and how we use what we learn in work, family, and community contexts. On the one hand, emotions can enable us to generate an active interest in learning and sustain our engagement in it. On the other hand, unmanaged stress and poor regulation of impulses interfere with attention and memory and contribute to behaviors disruptive to learning.

Moreover, learning is an intrinsically social and interactive process. It takes place in collaboration with one’s teachers, in the company of one’s peers, and with the support of one’s family. Relationships are the engine of learning.

“RELATIONSHIPS ARE THE ENGINE OF LEARNING.”

The Apparently Dreadful Past: Building Relationships the Old Fashioned Way

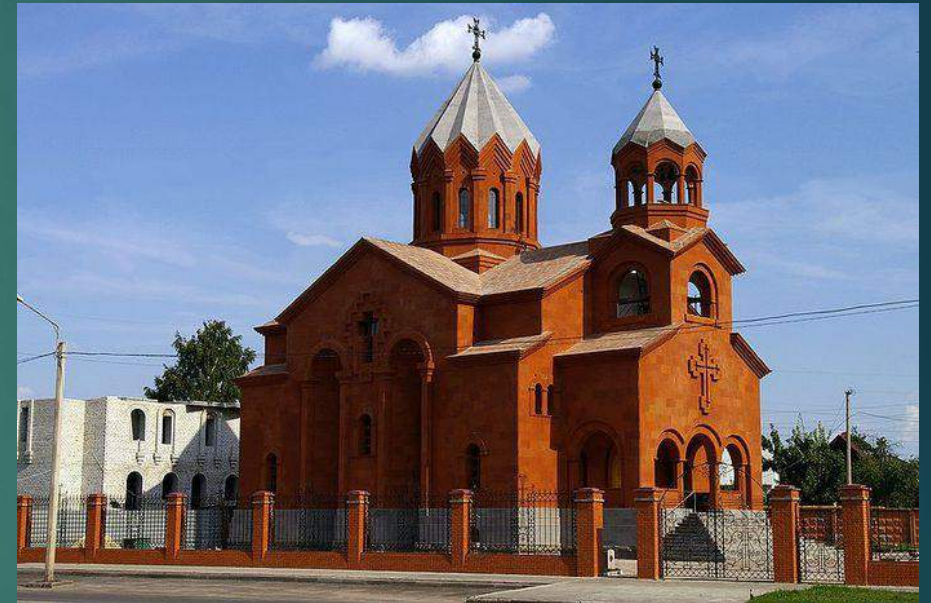
- Agreed, Relationships are the engine of learning
- Where have these relationships and the values that go with them been established and nurtured in the American past? In all of human history?
 - **through the MEDIATING INSTITUTIONS IN SOCIETY**
 - Think of them as **the BUFFER ZONES** between you and the State. They insulate us from both extreme individualism and extreme state control

What are these mediating institutions?

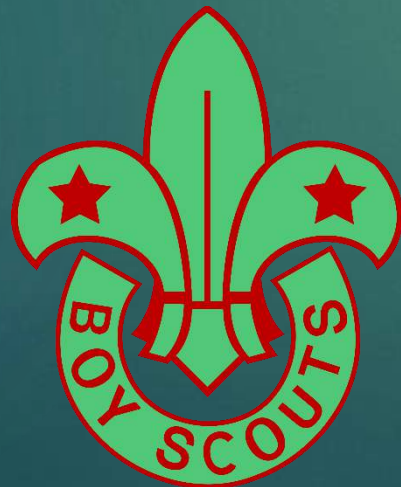
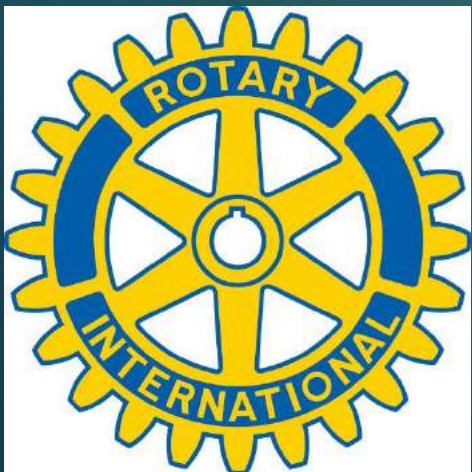
The Primary Mediating Institutions in Society are:



Family



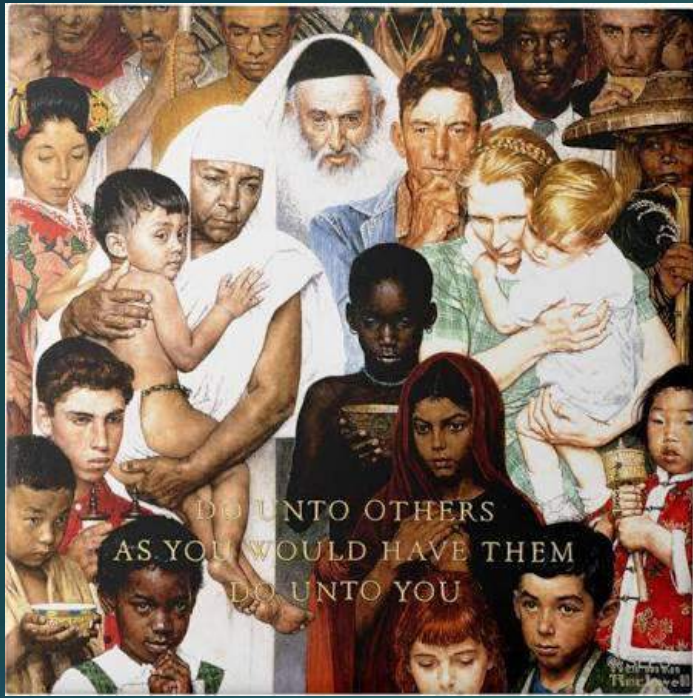
Church



& Voluntary Associations

In Free Societies:

Diverse Religious Denominations teach **The Golden Rule** – it's about relationships



Diversity of private associations teach **good manners And Etiquette** (supported by schools in the past) – Again, it's about relationships

All with the blessing of **the Family**, understood to be the primary guide of the upbringing of children.

"All great change In America begins At the Dinner Table." – Ronald Reagan



Manners are a sensitive awareness of the feelings of others. If you have that awareness, you have good manners, no matter what fork you use.

— Emily Post —

AZ QUOTES

The Big Question on SEL, the State, Values, and Diversity

- When the State takes over the functions of the mediating institutions
 - it encroaches upon the individual
 - it encroaches on the freedom of expression
 - it encroaches on the diversity of opinion in society
- So, on which side are SEL proponents?
 - Family vs. State?
 - Freedom of Religion vs. State?
 - Freedom of Association vs. State?

ANSWER: State, State, State

SEL IS A BAIT AND SWITCH SCAM

Its alleged mission is an ILLUSION.

SEL proponent would say: "But— honest!-- SEL will help kids develop positive relationships!"

That's the SEL wrapping paper. That's the bait. But inside the SEL package is the switch, the trap. Because SEL requires:

- 100 % compliance with its methods
- 100 % compliance with its content (incl. gender ideology and other vehicles that undermine independent thought.)
- 100 % compliance with a CASEL monopoly on how children are taught.



SEL approach and methods show that its goal is control

- Taking over the roles of family and religious institutions
- Assessing every student's emotional state
- Tracking every student's interactions
- Training students to CONFORM to the "right type" of interaction
- Defining "empathy" or "feeling what others feel" (except for those being exploited by SEL)
- Using the terms and language dictated by SEL advocates
- Controlling LANGUAGE, which comes with the "social justice" agenda: transgenderism, hate speech, identity politics, etc.
- Depriving children of content knowledge, disregarding their natural curiosity about the world outside of themselves

ALL ACCORDING TO ONE CASEL TEMPLATE

What does such behavior modification do? IT CONTROLS PERSONAL RELATIONSHIPS

The SEL curriculum – because of its monopolistic and monolithic nature and adherence to PC that demands CONFORMITY – does more to **eliminate** human relationships than to nurture them. How? Through nudging kids towards:

Self-censorship

Disrespect for the role of the family (Especially the organic family)

Disrespect for all mediating institutions

Disregard for the uniqueness of individuals

SEL does not allow for

- independent thought
- free speech
- privacy
- respect for the primacy of family loyalties over loyalty to the state bureaucracy
- natural curiosity of children

For these reasons, it cannot possibly nurture positive relationships.

THIS IS ALL BEHAVIOR MODIFICATION THAT LEADS DIRECTLY TO THE CONTROL OF ALL PERSONAL RELATIONSHIPS. TOTALITARIAN IN NATURE.

ONE TIP OFF

Here's the TIP OFF that those who support this piece of radical education reform would seek to regulate all personal relationships. Gender legal theorist Martha Fineman, in her book "The Autonomy Myth," argues for the total abolition of state-recognition of marriage. **Why?**

2017

Ruth Bader Ginsburg
Lifetime Achievement
Award

Martha Albertson Fineman



Apparently to promote government regulation of personal relationships by abolishing the mediating institution of the family

In Fineman's words:

“... it seems apparent to me that a lot more regulation (protection) would occur once interactions between individuals within families were removed from behind the veil of privacy that now shields them.”

“Once the institutional protection [is] removed, behavior would be judged by standards established to regulate interactions among all members of society.”

A Quick look at Relationships vs. Isolation

- Relationships come from a **BALANCE of differences and shared experience.**
 - We stand in relation to each other only when we are different from each other—in outlook, values, perspectives
 - If we are all the same, we are cogs in a machine – **THERE ARE NO RELATIONSHIPS in SAMENESS**
 - HOWEVER, we can relate to each other only when we share some common experience and values. We can verify reality only through our relationships.
 - If we are completely different/polarized, we can't communicate anything to share
- In a free society, the mediating institutions shape us as individuals – our values, practices and perspectives
 - They provide both the uniqueness and the structure of shared experience and values
 - These institutions are diverse and they influence us in diverse ways.
- When we can't express our differences in outlook, perspective, background, then we are put into a form of ISOLATION—that is, we don't have any true relationships

THE TACTIC of DIVISION

- Identity politics (sex, race, class, etc.)—tension for divide-and-conquer purposes
- Victim vs. Villain Rhetoric
- Emotionally manipulative
- Involves Myth Creation – e.g., the utopian society
- Repetition of slogans, symbols, images



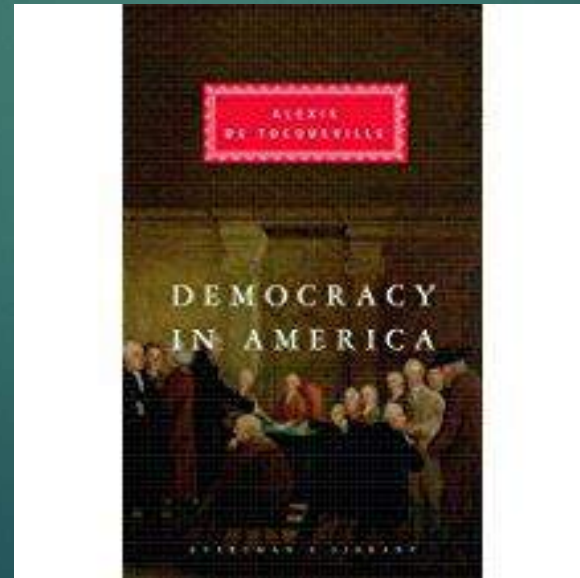


THE IRONY:

SEL'S DEVOTION TO IDENTITY POLITICS
DOES MORE TO CULTIVATE **ISOLATION**
THROUGH CONFORMITY, THAN TRUE
RELATIONSHIPS AND TRUE COMMUNITY
WHICH DEPEND UPON PERMITTING
DIVERSITY OF THOUGHT.

“A tyrant puts all his care into isolating people; he readily pardons the governed for not loving him, provided they do not love each other.”

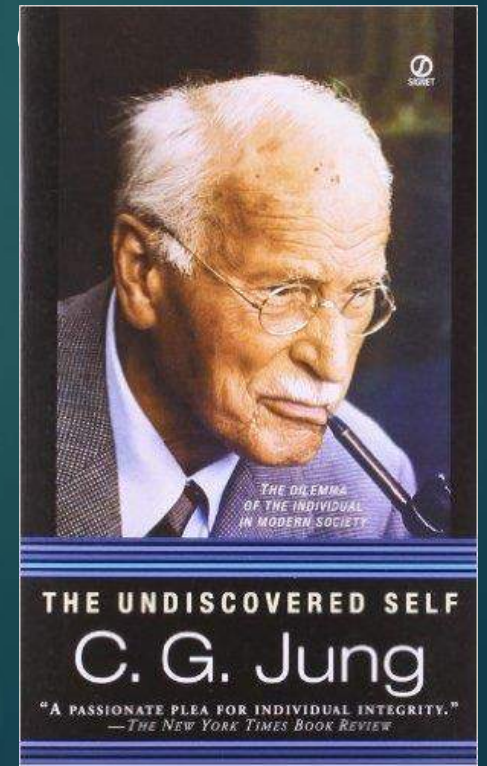
-- Alexis de Toqueville, Democracy in America, 1835



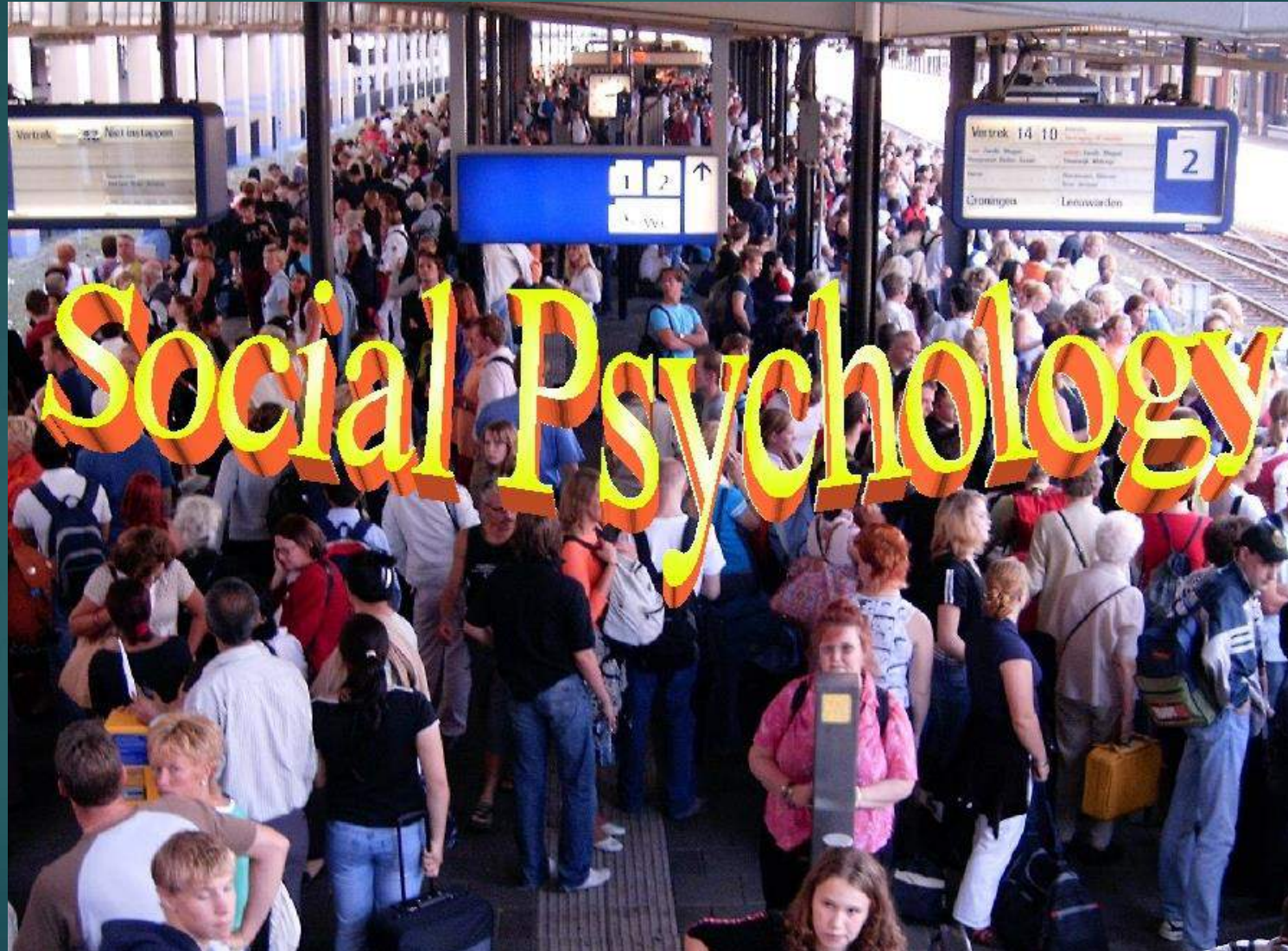
Isolation is the Enemy of Civil Society

“The more unrelated individuals are, the more consolidated the State becomes, and vice versa. . . . The underestimation the psychological factor is likely to take bitter revenge.”

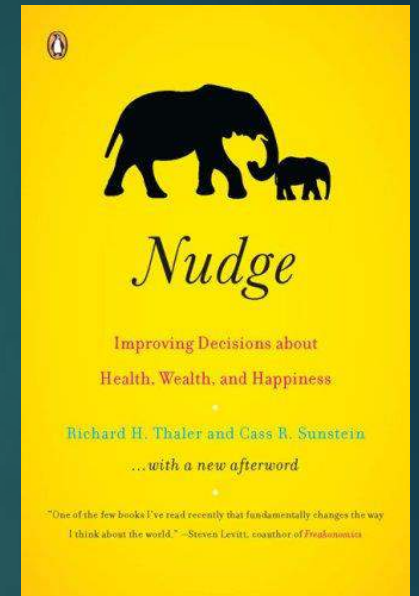
-- Carl Jung, *The Undiscovered Self*, 1957.



Our Problem: Not Understanding



The elites who push political correctness understand social psychology very well.



The rest of America, not so much. **BUT EVERYONE** should build awareness of social psychology.

Both Democratic Society and Totalitarian Society can be shaped by our level of awareness of social psychology

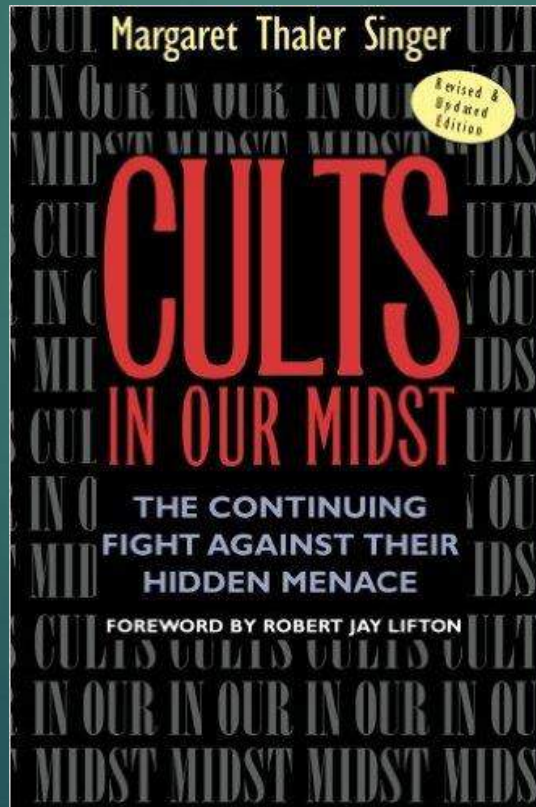
- Social Psychology deals with how our behaviors are influenced and modified, when we speak up or shut up.

Pluralistic/democratic society: multiple influences at play – family, church, teachers, neighbors, co-workers

Monolithic/totalitarian/authoritarian society: all actors serve to promote one statist agenda through the forces of emotional manipulation.

“The **psycho-technology of thought reform** is **not** going to go away. . . . Education, information, and vigilance are needed to keep us and our minds free.”

-- Margaret Thaler Singer, *Cults in Our Midst*, 1995





PART II

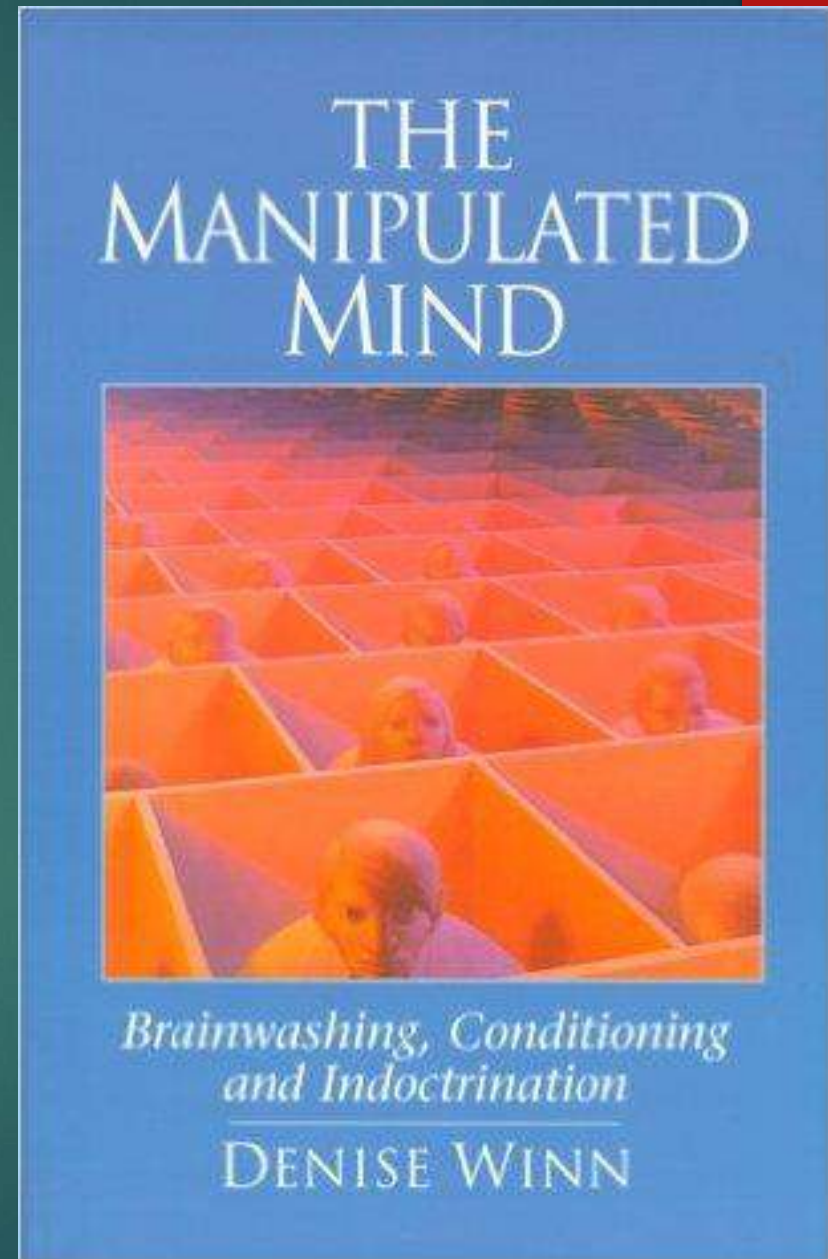
**THE WAYS OF SEL (its
software):**

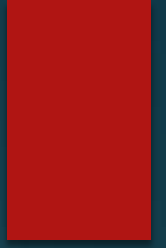
EXPLOITING HUMAN EMOTIONS

YOUR EMOTIONS CHANNEL THE EFFECTS OF POLITICAL CORRECTNESS, which:

- Control behavior to suit an agenda
- Control language (& therefore thought)
- Control human interactions
- Change our perceptions of reality
- Strive to keep people unaware of any agenda to control them.

The **EFFECT** is to
build walls around
each one of us.
ISOLATION through
Self-imposed
censorship is how
how it controls us.



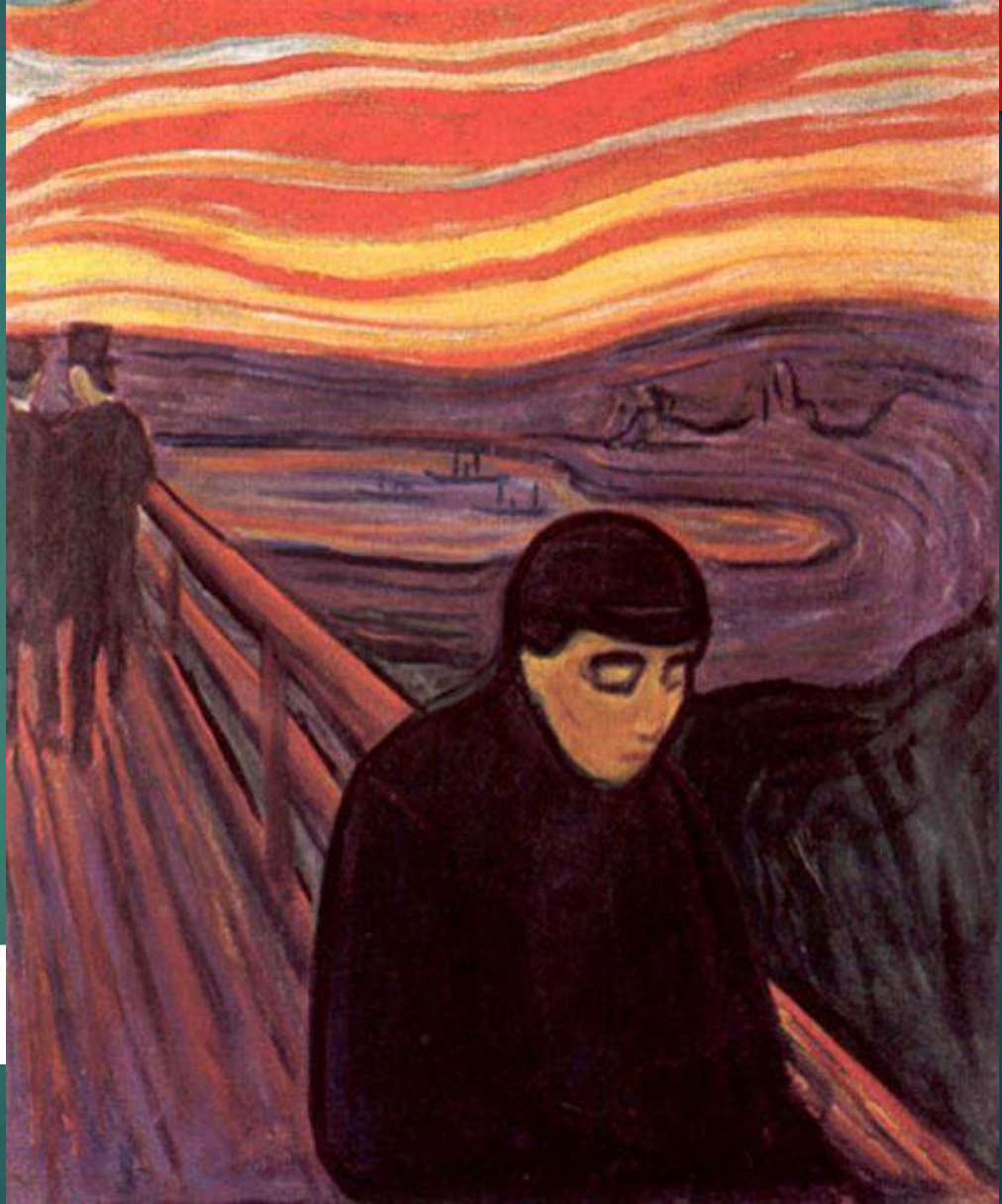


**POLITICALLY CORRECT AGENDAS
ALWAYS MANIPULATE TWO KEY
EMOTIONS:**

**THE GREATEST HUMAN
DESIRE/NEED:
LOVE AND
CONNECTION**



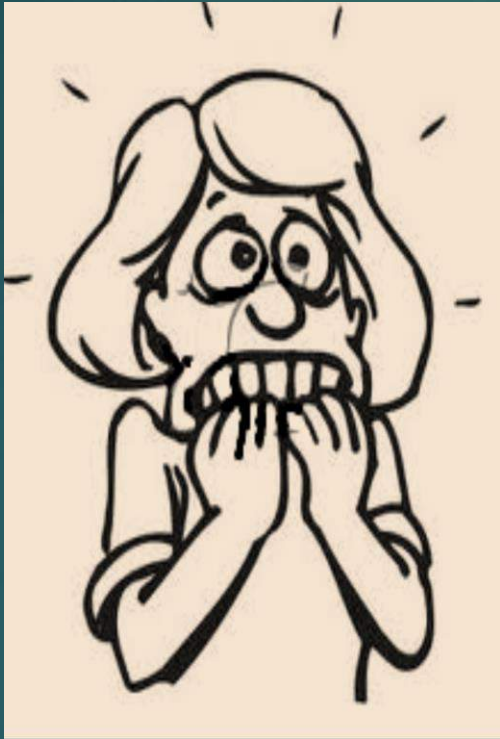
**And THE
GREATEST
HUMAN
FEAR:
LONELINESS
& REJECTION**



Political Correctness Cultivates the Threat & Fear of Loneliness

- By punishing independent thinkers with labels intended to demonize: “bigot,” “racist,” “homophobe,” “transphobic,” “flat earther,” “conspiracy theorist” etc.
- By rewarding compliance with labels indicating PC social acceptance, like: “brave,” “empathic,” “social change agent,” “progressive,” “anti-Fascist,” “woke,” etc.

Conformity and Compliance with PC agendas is extracted through FEAR:



- **FEAR of losing one's job**
- **FEAR of getting a poor grade**
- **FEAR of social rejection**
- **FEAR of harming relationships**

This is how group think is built.

**The vast majority will latch onto group
think as a tool for social survival.**



Which results in the herd effect of social conformity.

But we'd
never
conform,
would
we...?

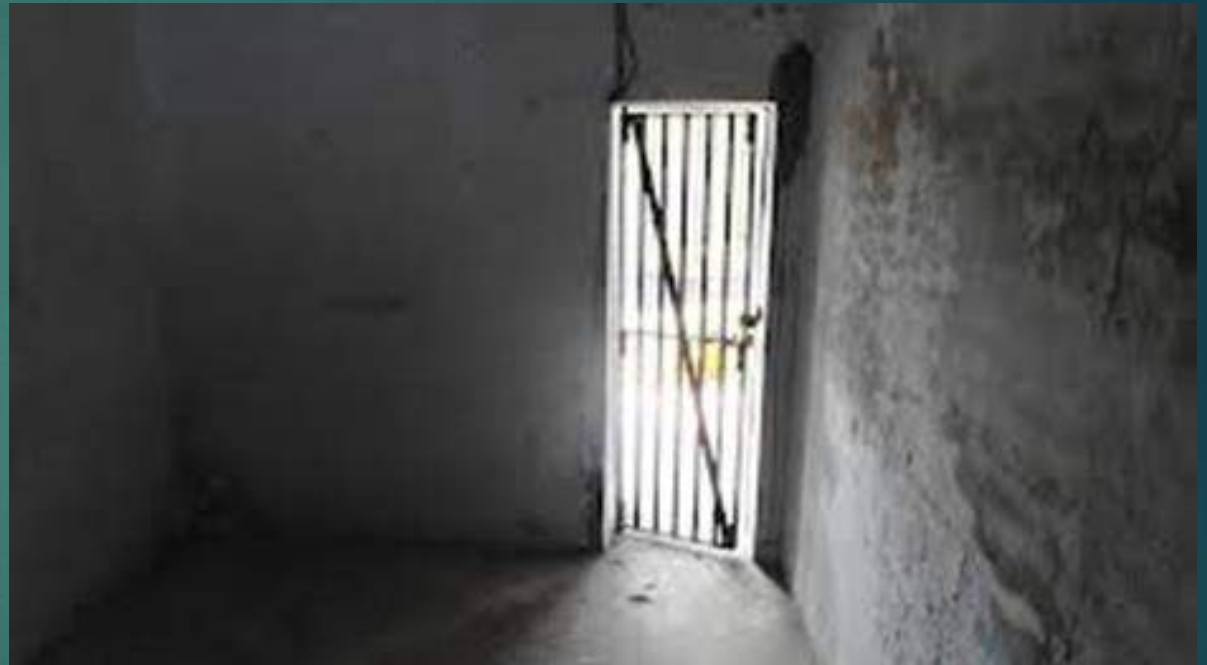


FEAR OF ISOLATION

It's primal.



We are hard-wired for survival to avoid social isolation.



Solitary confinement is by far considered the most dreaded punishment.

SEPARATION HAS PSYCHIC AND PHYSICAL CONSEQUENCES.



A Quick Refresher: The SEL BAIT & Switch

Social isolation is what SEL purports to prevent. Don't be fooled by its warm
And fuzzy packaging.

HOW CAN SEL PROMOTE HAPPY RELATIONSHIPS WHEN IT REQUIRES:

- 100 percent compliance with its methods
- 100 percent compliance with its content (incl. gender ideology and other vehicles that serve statist goals.)
- 100 percent compliance with a CASEL monopoly on how children are taught.

??????

Answer: It can't. It puts kids into a STRAIGHTJACKET. It actually CULTIVATES STRESS through a magnified fear and THREAT of social rejection with one un-PC mis-step!

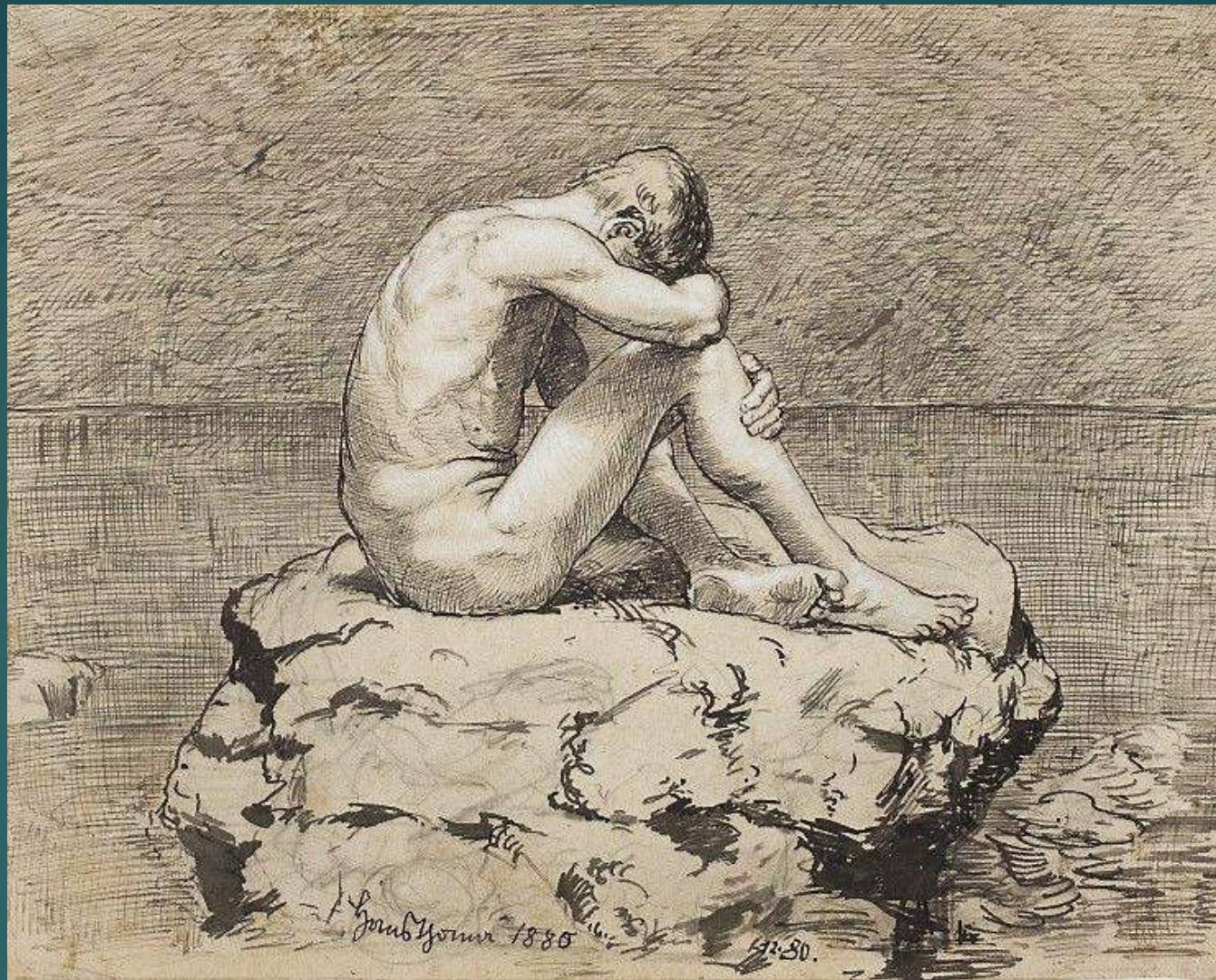
SOCIAL ISOLATION



Has been proven to lead to “failure to thrive” in babies and children.


Youth and teenagers intensely feel the pain and fear of “branding” from peers. They are especially motivated to “make it stop” by stifling independent thought and totally complying with the political correctness of SEL mandates.





Loneliness, Hans Thoma, 1880 (National Museum, Warsaw)

The pain and fear of being cast out do not subside in adulthood.



SO, BY EXPLOITING THE
PRIMAL FEAR OF LONELINESS,
POLITICALLY CORRECT AGENDAS
REPLACE THOUGHTFULNESS &
CONVERSATION
WITH CONDITIONED
EMOTIONAL REFLEXES
THAT PROMOTE GROUP THINK.

When people fear isolation,
how do they react?

**Self-Censorship +
Preference Falsification**

=

A “Spiral of Silence”

The Spiral of Silence cultivates & manufactures “Public Opinion Cascades”





"All those in favor say 'Aye.'"

"Aye."

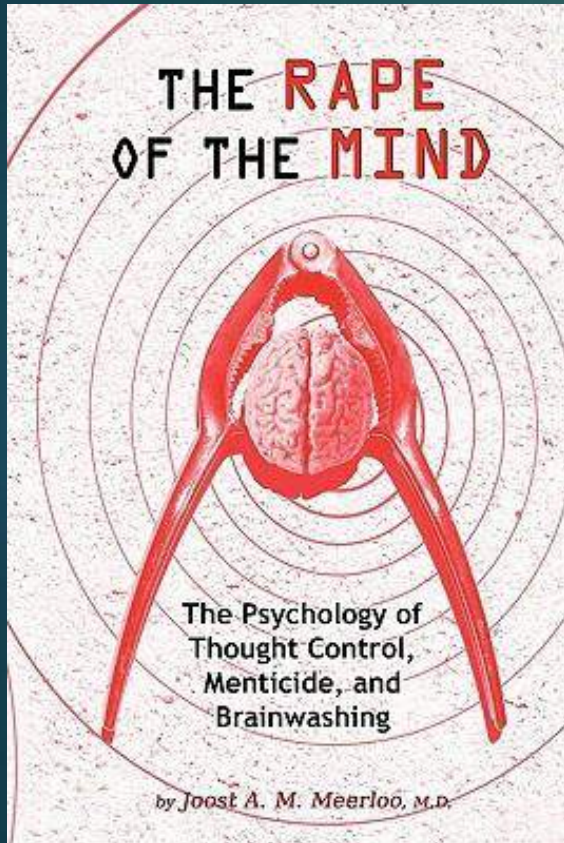
"Aye."

"Aye."

"Aye."

"Aye."

POLITICALLY CORRECT AGENDAS LIKE SEL ALWAYS WAGE WAR ON:

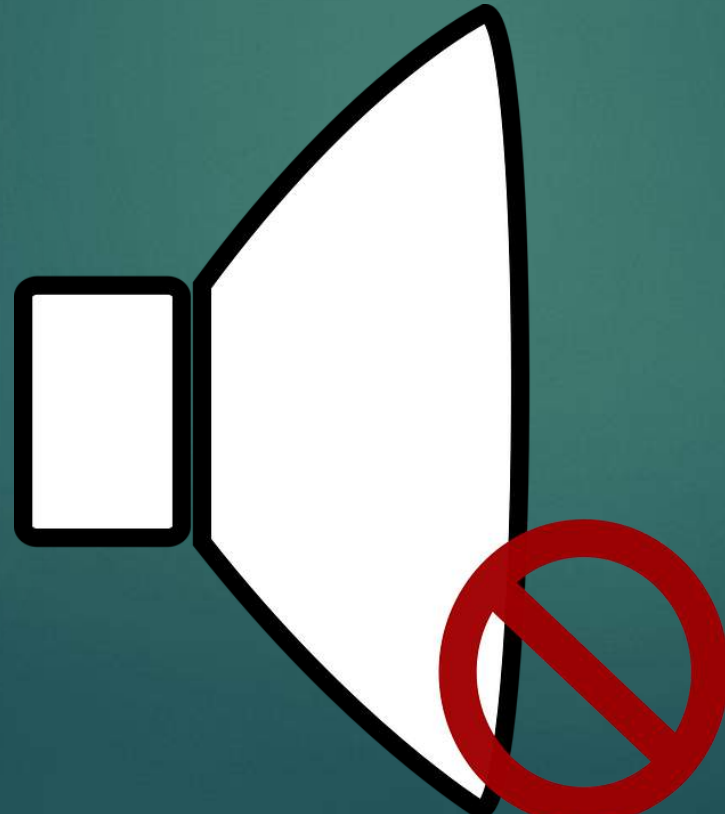


- CONVERSATION
- FAMILY & FRIENDSHIP
- CIVIL SOCIETY
- REALITY

Mass Conformity often leads to
Mass Delusion

**PART III:
THE TOOLS of SEL (its
Hardware):
PROPAGANDA, POLITICAL
CORRECTNESS, THOUGHT REFORM**

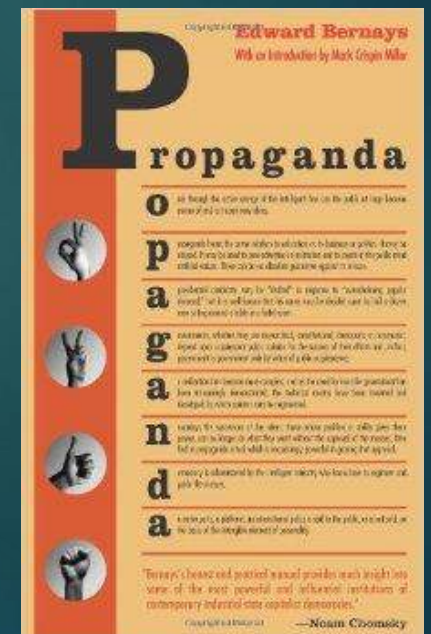
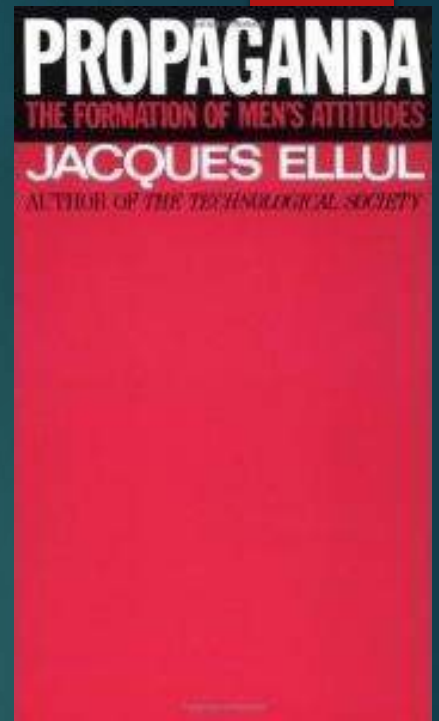
**WE CANNOT COMMUNICATE THE
DANGER OF ANY HARMFUL AGENDA
UNTIL WE UNDERSTAND HOW THE
MACHINERY OF
ITS PROPAGANDA WORKS.**



**Otherwise, we are
“on mute.”**

Think of Political Correctness as simply a modern term for AGITATION & PROPAGANDA (AGITPROP)

i.e., PC propagates & agitates
PC opinions



PROPAGANDA:

THE PROCESS BY WHICH
POWER ELITES **CONDITION**
INDIVIDUALS **THROUGH**
PSYCHOLOGICAL
MANIPULATION TO ADAPT
TO AN AGENDA.



Social Emotional Conditioning

Carrot & Stick Approach which modifies behavior by rewarding compliance, and also punishing non-compliance



BF Skinner & theory of Operant Conditioning
Especially through positive reinforcement.



Teaching Machine c. 1920's to automate
The task of "programmed learning"

WHAT'S THE DIFFERENCE?

POSITIVE REINFORCEMENT IN FAMILIES TREATS THE CHILD AS AN INDIVIDUAL WITHIN A FAMILY RELATIONSHIP.

IN A BUREAUCRATIZED AND CENTRALIZED SYSTEM OF PROGRAMMED LEARNING, WHAT PASSES FOR POSITIVE REINFORCEMENT IS ACTUALLY PEER MODELING MEANT TO REWARD “RIGHT-THINK” (WHILE PUNISHING “WRONG-THINK.”)

How best to understand the sort of conditioning
of an SEL agenda?

Consider Singer's CHART: "THE
CONTINUUM OF PERSUASION
AND INFLUENCE"


Where does SEL fit on this spectrum?

THE EXTREMES OF THE SPECTRUM:

TRUE EDUCATION VS. THOUGHT REFORM



	Education	Advertising	Propaganda	Indoctrination	Thought Reform
Focus of body of knowledge	Many bodies of knowledge, based on scientific findings in various fields.	Body of knowledge concerns product, competitors, how to sell and influence via legal persuasion.	Body of knowledge centers on political persuasion of masses of people.	Body of knowledge is explicitly designed to inculcate organizational values.	Body of knowledge centers on changing people without their knowledge.
Direction & degree of exchange	Two way pupil-teacher exchange encouraged.	Exchange can occur but communication generally one-sided.	Some exchange occurs but communication generally one-sided.	Limited exchange occurs, communication is one-sided.	No exchange occurs, communication is one-sided.
Ability to change	Change occurs as science advances; as students and other scholars offer criticisms; as students & citizens evaluate programs.	Change made by those who pay for it, based upon the success of ad programs by consumers law, & in response to consumer complaints.	Change based on changing tides in world politics and on political need to promote the group, nation, or international organization.	Change made through formal channels, via written suggestions to higher-ups.	Change occurs rarely; organization remains fairly rigid; change occurs primarily to improve thought-reform effectiveness.
Structure of persuasion	Uses teacher-pupil structure; logical thinking encouraged.	Uses an instructional mode to persuade consumer/buyer.	Takes authoritarian stance to persuade masses.	Takes authoritarian & hierarchical stance.	Takes authoritarian & hierarchical stance; No full awareness on part of learner.
Type of relationship	Instruction is time-limited; consensual.	Consumer/buyer can accept or ignore communication.	Learner support & engrossment expected.	Instruction is contractual; consensual	Group attempts to retain people forever.
Deceptiveness	Is not deceptive.	Can be deceptive, selecting only positive views.	Can be deceptive, often exaggerated.	Is not deceptive.	Is deceptive.
Breadth of learning	Focuses on learning to learn & learning about reality; broad goal is rounded knowledge for development of the individual.	Has a narrow goal of swaying opinion to promote and sell an idea, object, or program; another goal is to enhance seller & possibly buyer.	Targets large political masses to make them believe a specific view or circumstance is good.	Stresses narrow learning for a specific goal, to become something or to train for performance of duties.	Individualized target; hidden agenda (you will be changed one step at a time to become deployable to serve leaders).
Tolerance	Respects differences.	Puts down competition.	Wants to lessen opposition.	Aware of differences.	No respect for differences.
Methods	Instructional techniques.	Mild to heavy persuasion.	Overt persuasion sometimes unethical.	Disciplinary techniques.	Improper and unethical techniques.



ELEMENTS OF TRUE EDUCATION: Not deceptive, An **open**, two-way exchange of ideas, many bodies of knowledge; focuses on learning about **reality**, is **consensual**. Uses **ethical** methods understood by all, uses logic and **respects differences** in attitude & background.

ELEMENTS OF THOUGHT REFORM:
is **deceptive**, attempts to change the person, instruction is **authoritative** and one way, **closed system of Logic**; no tolerance for individual differences & attitudes. Involves programming of thought.

Singer's 6 Elements of Thought Reform/Brainwashing/Cult Activity

- Keep the person unaware there is an agenda to control or change the person and their thoughts
- Control time and physical environment
- Create a sense of powerlessness, fear, and dependency
- Suppress old behavior and attitudes
- Instill new behavior and attitudes
- Put forth a closed system of logic.

Would you say that SEL meets these six conditions?

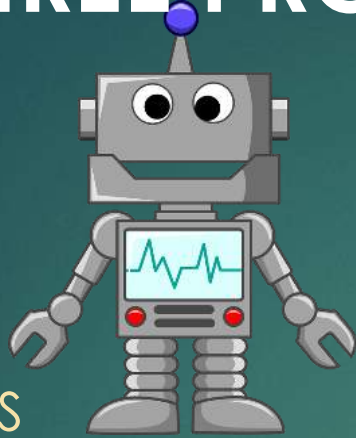
Where does the road of
propaganda & thought
reform take us?



THROUGH THREE PROCESSING CENTERS:

1. PROPAGANDA

GROUNDWORK: BLUNTS INDEPENDENT THOUGHT BY MANIPULATING LANGUAGE & EMOTIONS

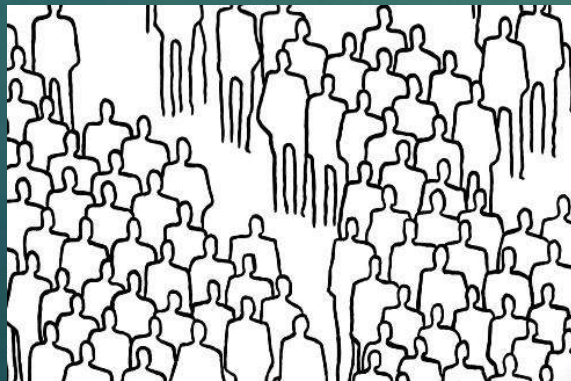


2. BEHAVIOR

MODIFICATION: MASSES MOBILIZED TO AGITATE & CREATE ILLUSION OF WIDESPREAD SUPPORT FOR AGENDA.



3. FINAL DESTINATION:
TOTAL CONFORMITY

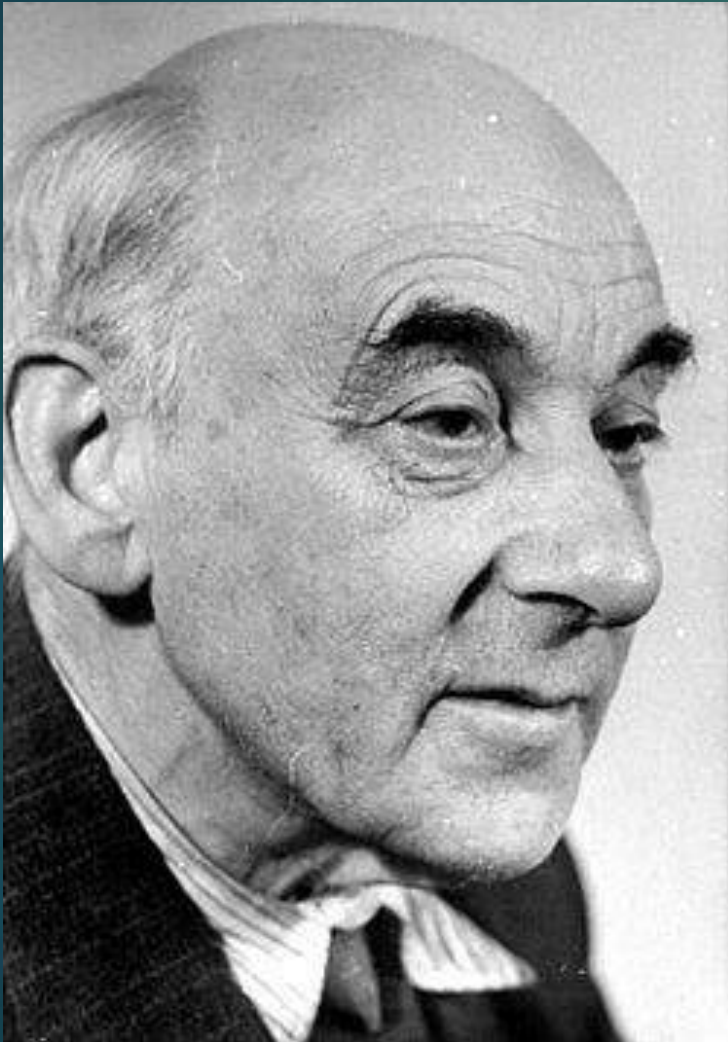


OUR THOUGHT PROCESSES ARE DESTABILIZED WHEN OUR LANGUAGE IS MANIPULATED

- “Sex assigned at birth.” We have incorporated this false premise into all of our laws. It nudges the mind to deny physical reality.
- Usage of the term “gender” as though interchangeable with “sex.” It’s NOT.
- PRONOUN PROTOCOLS: DESTABILIZES THOUGHT because it totally **undermines the entire structure of our language.**

FORCED MANIPULATION OF LANGUAGE IS WRITTEN INTO THE CONTENT OF SEL.

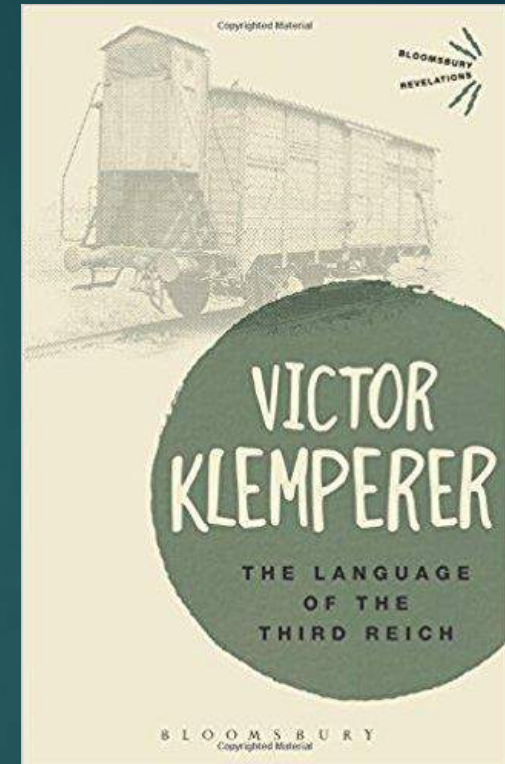
Historically, manipulation of language takes us down a very dangerous road.




Consider Victor Klemperer's book, "The Language of the Third Reich"

He describes how abuse of language was the primary means of empowering the Nazis and essentially turned all Germans into Nazis.

How?





“They found it difficult to think about life and morality in any other way; Language does not simply write and think for me, it also increasingly dictates my feelings and governs my entire spiritual being . . . Words can be like tiny doses of arsenic; they are swallowed unnoticed . . . and then after a little time the toxic reaction sets in. . . . The sole purpose of the [Nazi use and form of language] is to strip everyone of their individuality, to paralyze them as personalities, to make them into unthinking and docile cattle . . . “

” -- Victor Klemperer

<https://mises.org/blog/tyrants-mind-and-new-collectivism>

AND IT ALL BEGINS WITH SELF- CENSORSHIP -- A HUGE TRAP

**OUR SILENCE ADVANCES
THE OTHER POINT OF VIEW
AND IMPLIES CONSENSUS**

**“Qui tacet consentire
videtur”**

SLIPPERY SLOPE OF ANTI-SPEECH LAWS

When people don't feel they can express their opinions, society starts going in some creepy directions. If you look at societies that don't guarantee free speech, here's what you can get:

- STRUGGLE SESSIONS (“of criticism and self-criticism”)
- THOUGHT POLICING & FALSE CONFESSIONS
- SOCIAL SURVEILLANCE



Do you hear echoes today of

- STRUGGLE SESSIONS
- THOUGHT POLICING & FALSE CONFESSIONS?





HOW ABOUT WHEN A CELEBRITY PROMOTES A SURVEILLANCE SOCIETY?

Lena Dunham's modeled this behavior when she reported to American Airlines two employees whose "transphobic" conversation she claimed to overhear. She was looking to have them punished for saying that they wouldn't want their kids to be "trans." The airline was indulgent to her.

<https://www.usatoday.com/story/life/2017/08/03/lena-dunham-calls-out-american-airlines-employees-transphobic-talk/535683001/>



American Airlines[®]
American Eagle[®]



How Did We Get Here?
ONE PERFECT EXAMPLE IS
GENDER IDEOLOGY
AN AGENDA COMPLETELY
DEPENDENT UPON AGGRESSIVE
AGITPROP and thought reform
through language manipulation.
Takes us into the Twilight Zone . . .

IT PROMOTES A MYTH:

That the elimination of sex distinctions means “Equality,” “Freedom,” “Inclusion”

BUT HIDES THE REALITY:

Trajectory leads to outlawing Male & Female sex distinctions; state control over family, and therefore ALL relationships. Constricts freedom. Only serves a power elite.
MEANT TO DESTABILIZE THOUGHT.

THE WAR ON REALITY. IT'S
LIKE
WE'RE ENTERING:



DOES IT SEEM LIKE WE REACHED THIS POINT AT WARP SPEED?

Yes and no.

Yes, it has to move fast & furiously so you don't
Know what hit you.

But the groundwork was laid over a four-
stage process pushed along by propaganda
compliance

- CULTIVATION OF IGNORANCE
- DESENSITIZATION
- JAMMING
- CONVERSION

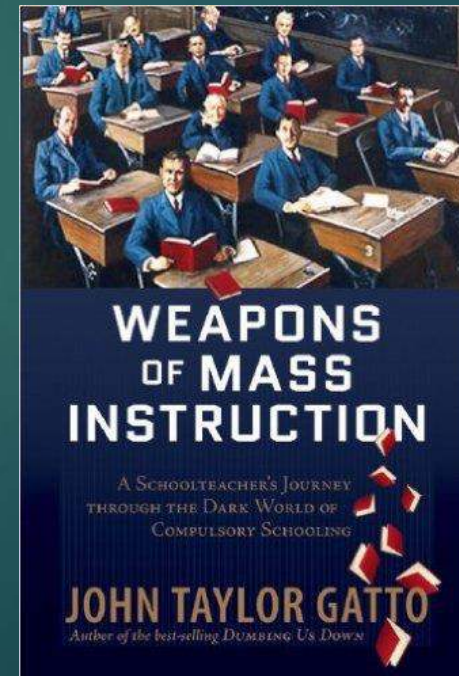
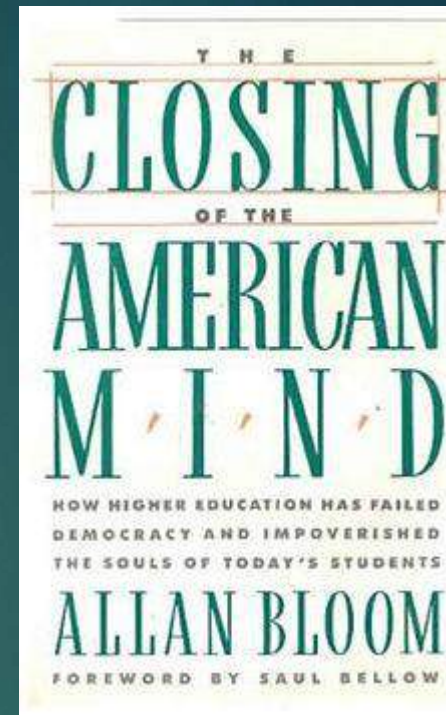


1. CULTIVATION OF IGNORANCE

- LAID THE GROUNDWORK.
- INCLUDED MEDIA TAKEOVER
- EFFECT: DESTABILIZE & UNDERMINE CLEAR THINKING

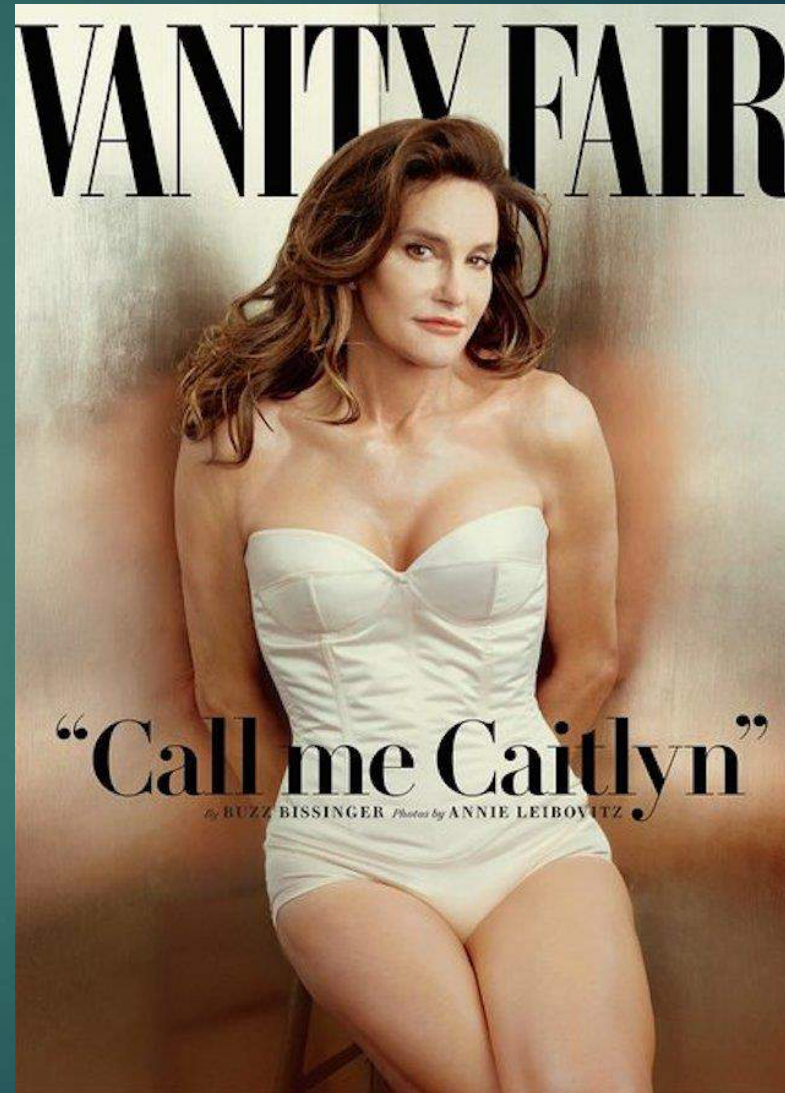
- A GENERATIONAL, LONG TERM PHASE

- INTELLECTUAL THEFT IN K-12 & Higher Ed -- REPLACING CONTENT, esp. HUMANITIES (history, classics, etc.) With Grievance Studies (e.g., women's studies, queer studies, etc.)



2. DESENSITIZATION

A COORDINATED MEDIA CAMPAIGN OF CONSTANT BOMBARDMENT WITH IMAGES, TV, TALK SHOWS. TOTAL SATURATION OF THE NARRATIVE SO THE SHOCK WEARS OFF & THE PUBLIC CONFORMS.



3. JAMMING/SUPPRESSION

Silencing/Punishing ANYONE not conforming

“Little by little, they are stripping us of any thought we might have, or any difference of opinion. This is our Religious Freedom at stake.”

~Barronelle Stutzman



4. CONVERSION/CONFORMITY

Thru PROCESS OF NORMALIZATION & COGNITIVE DISSONANCE. Heavy exploitation of children so that average folks can be influenced by these optics.



MOST AGITPROP TODAY COMES VIA CONTROL OF ALL OUTLETS OF COMMUNICATION:



- Big Media
- Hollywood
- Academia
- K12 Ed
- Unions
- & More

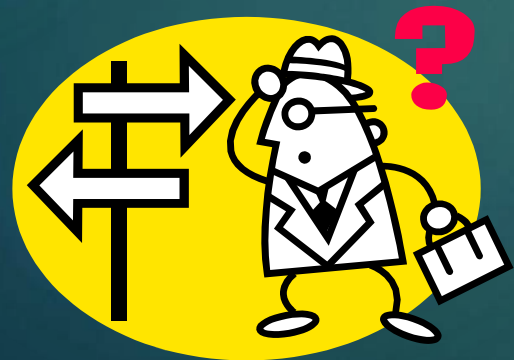




**PART IV: A SOLUTION –
GROWING A RIPPLE EFFECT.**

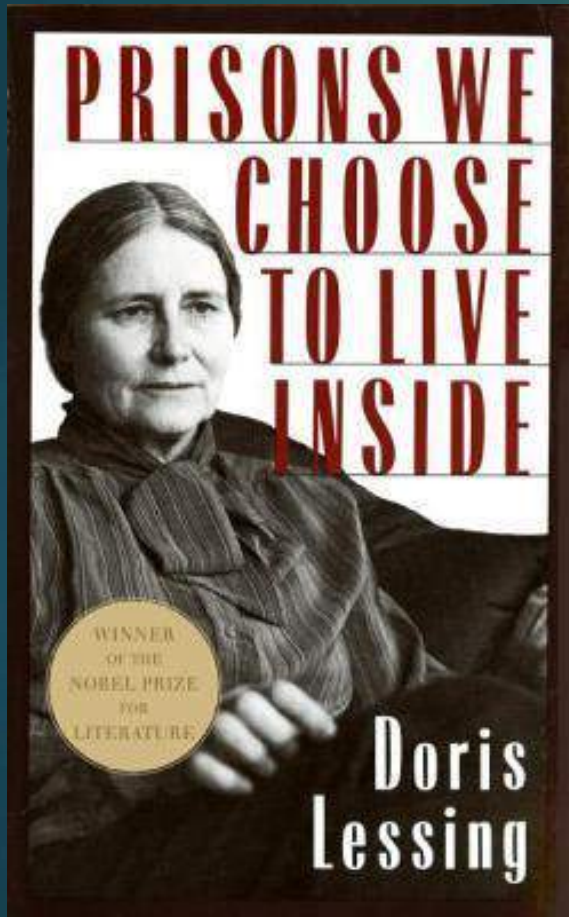


WHAT CAN WE DO
ABOUT IT? HOW
DO WE GO FORWARD?



#1: UNDERSTAND THE GAME!

Understanding social psychology is **KEY**.



“We know more about ourselves now than people did in the past, but very little of this knowledge has been put into effectHow is it that so-called democratic movements don’t make a point of instructing their members in the laws of crowd psychology, group psychology?”

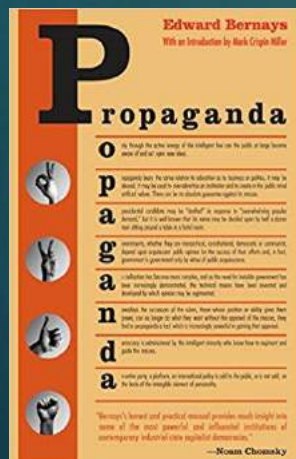
-- Doris Lessing, (Nobel Laureate) *Prisons We Choose to Live Inside*, 1986.

#2. Strengthen our support networks.

Brainstorm on Solutions!

Develop Webinars!

Start Book Clubs to read About how Propaganda works!



Start Role-playing work-Shops on how to Deal with PC & hostile Thought reform agendas.

Build true community

Get to know your Neighbors

#3. AND GROW AWARENESS!

Through outreach

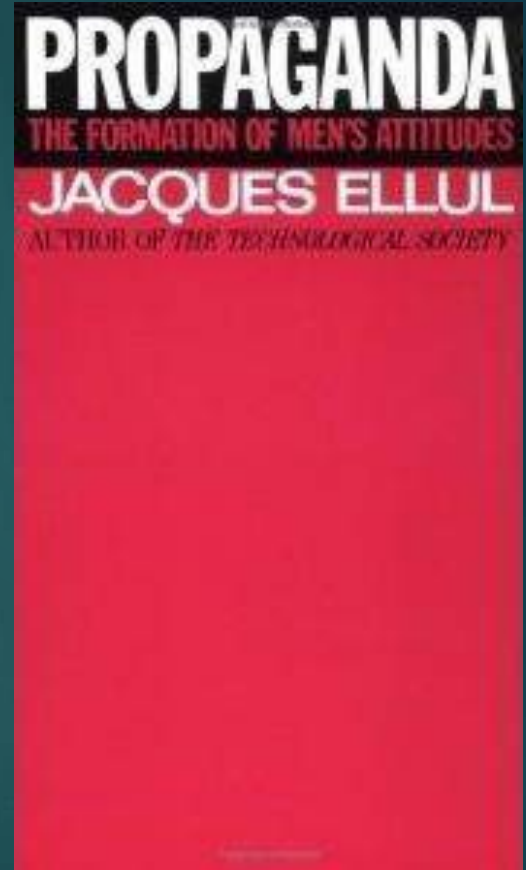
Getting out of our comfort zones is the only way to fight PC-induced polarization and stereotypes that isolate us.

Free Speech is a Use-It-Or-Lose-It Proposition

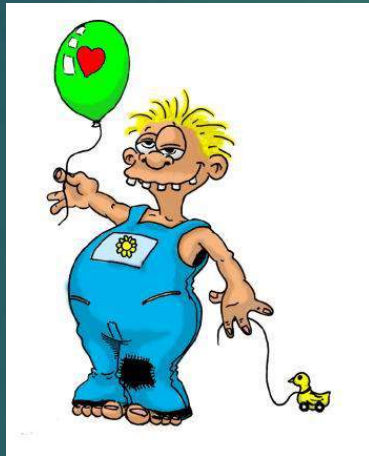
#4. THE BEST OUTREACH IS ONE-ON-ONE

“Propaganda ceases where simple dialogue begins.”

--Jacques Ellul, *Propaganda: The Formation of Men's Attitudes* (1965.)



Because kind and judicious one-on-one conversation cuts through the propaganda caricatures and de-humanizing stereotypes that prevent people from listening.

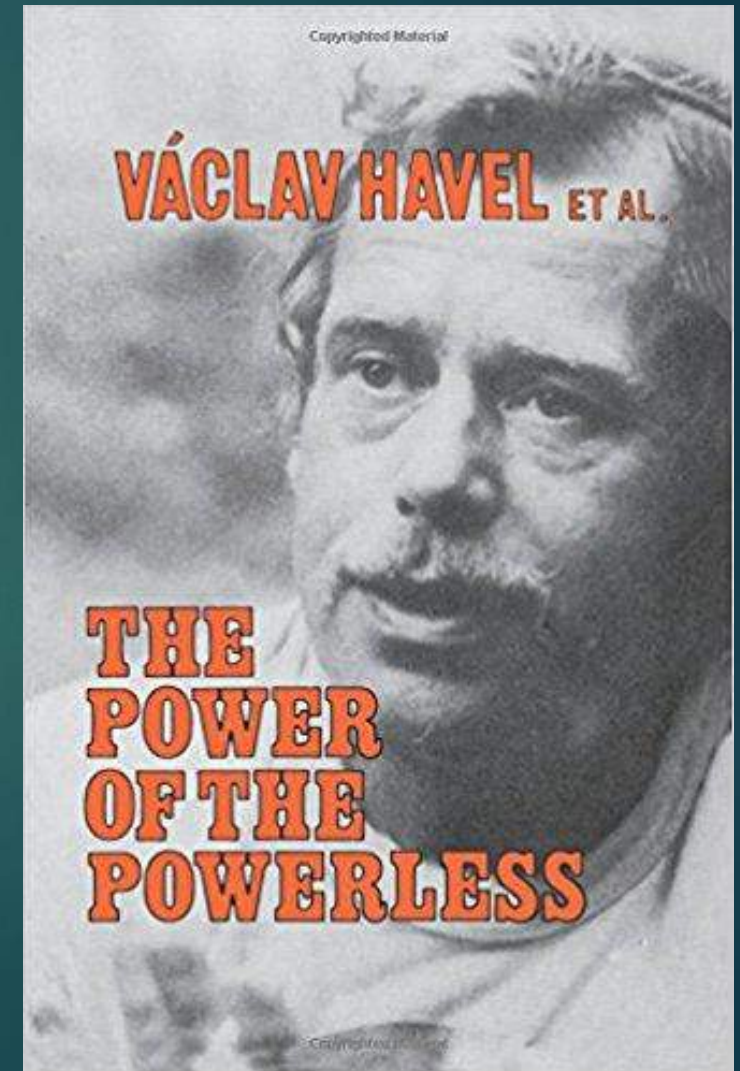


"Freedom of Speech," Norman Rockwell

“When one person speaks up,
something dangerous to the
regime happens. . . That person
‘enables
everyone to peer behind the
curtain’ and see ‘that it IS possible
to live within the truth.’”

—Vaclav Havel

The Power of the Powerless



The pushers of political correctness may control all of the outlets of communication . . .



- Big Media
- Hollywood
- Academia
- K12 Ed
- Unions
- & More



But they can't (yet) prevent people from reaching out in the "hidden sphere" of their daily lives.



BECAUSE they do not (yet)
control the “Hidden Sphere”



Which means our personal relationships

Our Personal One-on-One Conversations



And Friendships

And make no mistake, total control of the hidden sphere/private life is the **BIG PRIZE** of statist agendas like SEL. The whole point of Political Correctness is to control what you say and with whom you speak. This is a war on conversation and a war on friendship. A war to stop the ripple effect of freedom.

Propagandists never underestimate the power of a single person to create a RIPPLE EFFECT impacting history.



So neither should we.