

# DJI Camera Exporter

User Manual V1.0

2016.03



# Profile

DJI Camera Exporter browses Name, Frames, FPS and Time included, and exports raw video clips from the DJI X5R camera into Adobe DNG(raw) sequences.

## Installing DJI Camera Exporter

### System Requirements

- Windows 7/8/10
- USB 3.0

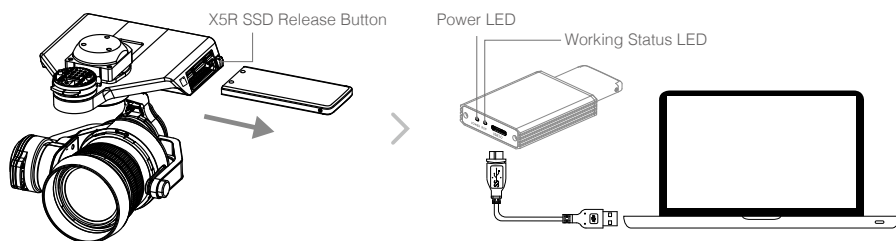
### Installation

1. Uncompress the "DJI Camera Exporter" zip package.
2. Execute setup.exe to install the DJI Camera Exporter.

## Usage

### Connecting the X5R SSD and the PC

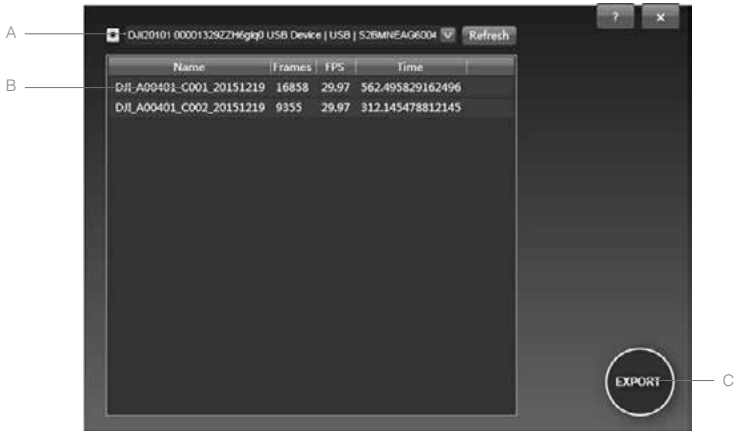
1. Power off the Zenmuse X5R. While holding down the X5R SSD Release Button, remove the X5R SSD.
2. Insert the X5R SSD into the X5R Reader. Connect the X5 Reader to your computer with a USB 3.0 cable.
3. Check the connection status displayed on the X5R Reader LED.



Power LED	
Off	X5R Reader does not have power / X5R SSD not inserted.
Solid Blue	The X5R Reader is powered on and the X5R SSD is inserted correctly.
Working Status LED	
Off	Idle.
Blinking Blue	Read and write in progress.

## Exporting the X5R SSD Files

1. Launch DJI Camera Export.
2. SSDs detected will be listed (A), or you could "Refresh" the cartridge list.
3. Video clips in the SSD will be listed (B).
4. Select clips you want to export, then click "Export" (C).



Updates can be download at  if available when DJI Camera Exporter launches.

DJI Support  
<http://www.dji.com/support>

This content is subject to change.

**Download the latest version from**  
**<http://www.dji.com/product/inspire-1-pro-and-raw>**



If you have any questions about this document, please contact DJI by sending a message to [DocSupport@dji.com](mailto:DocSupport@dji.com).