



GETTING STARTED GUIDE

Kiwi CatTools

Version 3.12.4

© 2024 SolarWinds Worldwide, LLC. All rights reserved.

This document may not be reproduced by any means nor modified, decompiled, disassembled, published or distributed, in whole or in part, or translated to any electronic medium or other means without the prior written consent of SolarWinds. All right, title, and interest in and to the software, services, and documentation are and shall remain the exclusive property of SolarWinds, its affiliates, and/or its respective licensors.

SOLARWINDS DISCLAIMS ALL WARRANTIES, CONDITIONS, OR OTHER TERMS, EXPRESS OR IMPLIED, STATUTORY OR OTHERWISE, ON THE DOCUMENTATION, INCLUDING WITHOUT LIMITATION NONINFRINGEMENT, ACCURACY, COMPLETENESS, OR USEFULNESS OF ANY INFORMATION CONTAINED HEREIN. IN NO EVENT SHALL SOLARWINDS, ITS SUPPLIERS, NOR ITS LICENSORS BE LIABLE FOR ANY DAMAGES, WHETHER ARISING IN TORT, CONTRACT OR ANY OTHER LEGAL THEORY, EVEN IF SOLARWINDS HAS BEEN ADVISED OF THE POSSIBILITY OF SUCH DAMAGES.

The SolarWinds, SolarWinds & Design, Orion, and THWACK trademarks are the exclusive property of SolarWinds Worldwide, LLC or its affiliates, are registered with the U.S. Patent and Trademark Office, and may be registered or pending registration in other countries. All other SolarWinds trademarks, service marks, and logos may be common law marks or are registered or pending registration. All other trademarks mentioned herein are used for identification purposes only and are trademarks of (and may be registered trademarks) of their respective companies.

Table of Contents

| | |
|--|-----------|
| How to get started with Kiwi CatTools | 4 |
| Who should use this guide? | 4 |
| Checklist to get started with Kiwi CatTools | 4 |
| CatTools Setup Wizard | 5 |
| Add a device to monitor with CatTools | 6 |
| Create scheduled activities to run against your device | 7 |
| Configure your notification options | 9 |
| About the Kiwi CatTools Interface | 11 |
| Kiwi CatTools Dashboard Panes | 11 |
| Example scenario: Use CatTools to update passwords on multiple devices | 12 |
| Beyond Getting Started with Kiwi CatTools | 14 |
| KCT Getting Started - Additional resources | 15 |

How to get started with Kiwi CatTools

The purpose of this guide is to help you configure Kiwi CatTools for network device management and familiarize yourself with the most commonly used features of Kiwi CatTools. It is intended for SolarWinds customers who have recently purchased, or want to purchase, Kiwi CatTools for the first time.

Who should use this guide?


New CatTools Users

This guide continues from the Kiwi CatTools installation and takes you through the setup wizard to begin managing your network devices.

Existing CatTools Users

If you are looking for information on upgrading to the newest version of Kiwi CatTools, see the [Kiwi CatTools Upgrade Guide](#).

Additionally, if you are looking for advanced information about the features of Kiwi CatTools, see the [Kiwi CatTools Administrator Guide](#).

 To evaluate Kiwi CatTools, you can [download the product](#) and use fully-functional for 14 days. For assistance with your evaluation or purchasing a production license, contact sales@solarwinds.com.

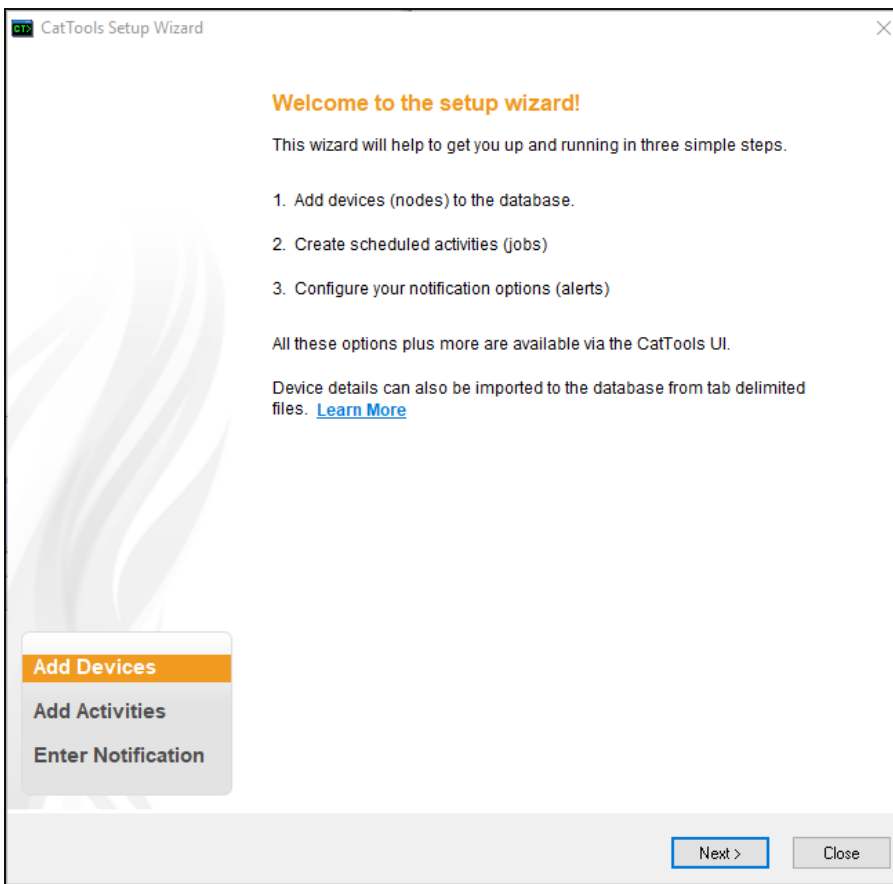
Checklist to get started with Kiwi CatTools

- Install Kiwi CatTools**
If you have not installed CatTools yet, see the [Kiwi CatTools Installation Guide](#) for system requirements, planning checklists, troubleshooting, and installation instructions.
- Set up Kiwi CatTools**
Using the [Setup Wizard](#), add network devices, configure your activities, and determine where to receive alert email notifications.
- Explore the Kiwi CatTools Interface**
Understand the Kiwi CatTools dashboard used to further customize your product.
- Beyond getting started with CatTools**
Learn about additional resources available as you expand your use of Kiwi CatTools.

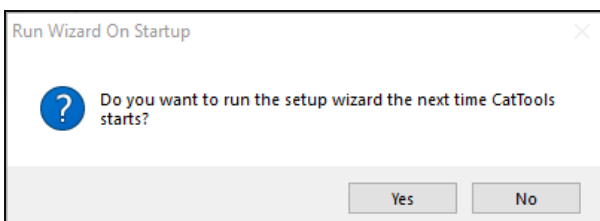
CatTools Setup Wizard

The CatTools Setup Wizard allows you to quickly configure your devices and begin running your activities and reports. Using the setup wizard you are able to:

1. [Add devices](#) to the Kiwi CatTools database.
2. [Create scheduled activities](#).
3. [Configure your notification options](#).



The CatTools Setup Wizard automatically runs when you first run CatTools after installation. You can also choose to run the Wizard each time Kiwi CatTools is opened after completing or closing the Setup wizard.

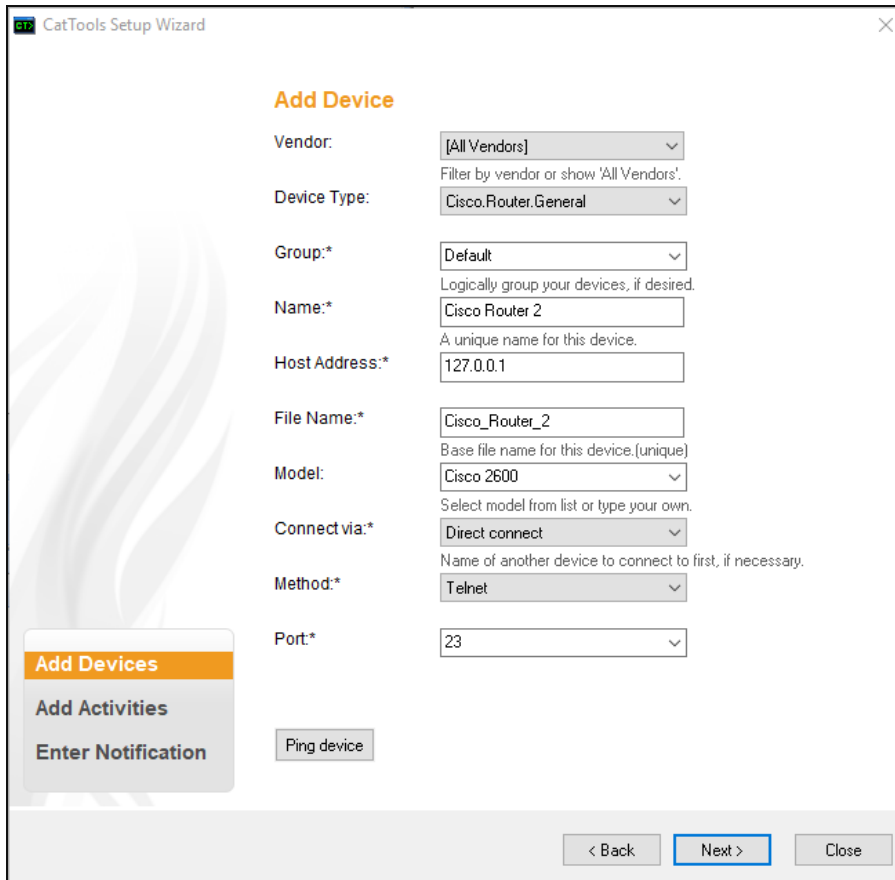


i This prompt is only shown if you click **Yes** after completing the setup wizard. If you click **No**, the setup wizard does not automatically run when you open Kiwi CatTools and the prompt no longer displays. However, you can configure your notifications, devices, or activities individually at any time from the Options menu:

- To configure notifications, go to Options > Setup.
- To configure devices, go to Options > Device Wizard.
- To configure activities, go to Options > Activity Wizard.

Add a device to monitor with CatTools

Monitored network [devices](#) are stored in the CatTools database. CatTools supports a wide range of different manufacturer and model devices. To add a device using the Setup Wizard, complete the required fields and follow on-screen prompts to enter device identification and log in information.



CatTools Setup Wizard

Add Device

Vendor: [All Vendors]

Device Type: Cisco.Router.General

Group:* Default

Name:* Cisco Router 2

Host Address:* 127.0.0.1

File Name:* Cisco_Router_2

Model: Cisco 2600

Connect via:* Direct connect

Method:* Telnet

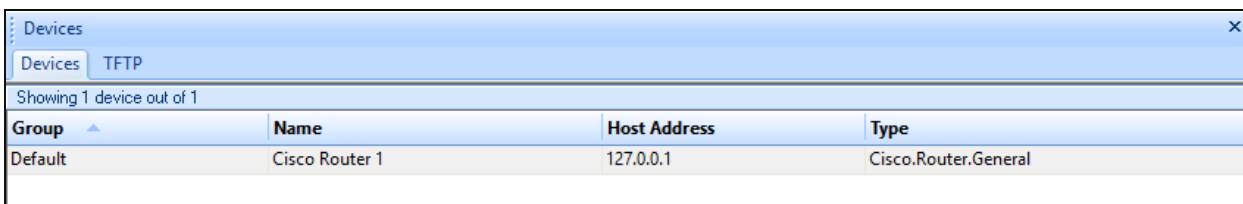
Port:* 23

Gotchas

When entering log in information for a device, some fields may not be required for your device and should be left blank. Do not enter a space or any other character because it may cause errors.

- You should ping each device you add to test for a successful connection.
- If using a Cisco router as a jump point, SolarWinds recommends that you disable "logging synchronous" in the Line VTY section of the device setup wizard. Leaving this option enabled can cause problems when trying to connect out from the router using telnet. By default, most Cisco routers have been configured with 5 lines. If you have more than 5 devices which all connect via the router, timeout errors or connection failures can occur as a result of all of the available router lines being used. To prevent these errors, you can do the following:
 - A. Increase the number of VTY lines available on your primary connection via router.
 - B. Set the client threads to use 5 threads.
 - C. Use a Linux box as the "connect via" device instead of a router.
- Using SSH as a connection method in CatTools, you may need to identify the specific variant to connect with a device. For example, Netscreen devices supporting SSH2 requires the variant `SSH2-nopty` to connect.

Devices successfully added to Kiwi CatTools appear in the devices pane of the CatTools dashboard.

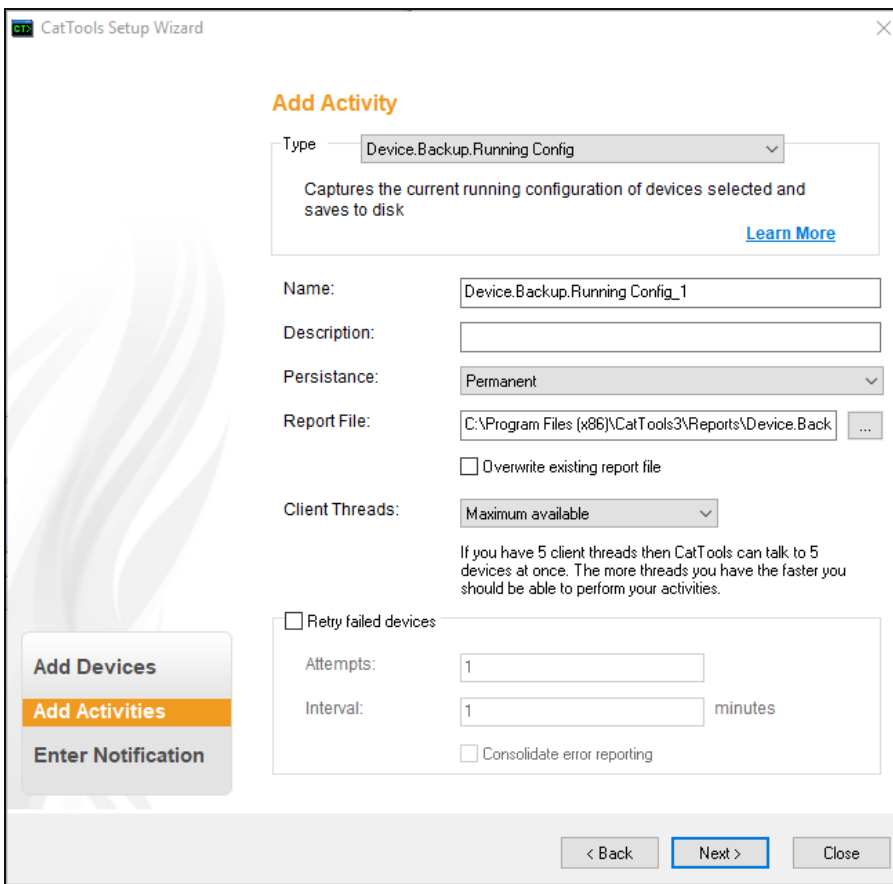


The screenshot shows a window titled "Devices" with a sub-tab "TFTP". It displays a table with one device entry. The table has columns for Group, Name, Host Address, and Type.

| Group | Name | Host Address | Type |
|---------|----------------|--------------|----------------------|
| Default | Cisco Router 1 | 127.0.0.1 | Cisco.Router.General |

Create scheduled activities to run against your device

An [activity](#) is a task that CatTools performs against one or more of your network devices that you have added to the CatTools database, for example [Backing up the running configurations of a device](#). To create an activity using the [Setup Wizard](#), complete the required fields and follow on-screen prompts.



CatTools Setup Wizard

Add Activity

Type: Device.Backup.Running Config

Captures the current running configuration of devices selected and saves to disk [Learn More](#)

Name: Device.Backup.Running Config_1

Description:

Persistence: Permanent

Report File: C:\Program Files (x86)\CatTools3\Reports\Device.Back

Overwrite existing report file

Client Threads: Maximum available

If you have 5 client threads then CatTools can talk to 5 devices at once. The more threads you have the faster you should be able to perform your activities.

Retry failed devices

Attempts: 1

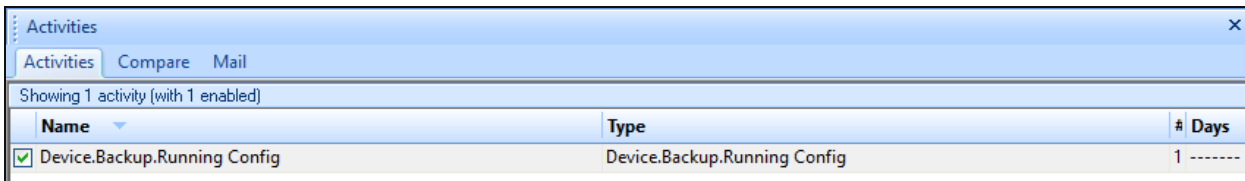
Interval: 1 minutes

Consolidate error reporting

Gotchas

- Persistence defines how long an activity is operative in CatTools. For example, an activity is executed on a defined schedule permanently until manually stopped, or executes just once and then automatically deactivates.
- Frequency defines the rate at which an activity runs against a device over a period of time. For example, you can configure CatTools to regularly ping the connection for a network device on the 1st Sunday of each month at 8:00 a.m.
- When specifying the location of the Report File, check `Overwrite existing report file` to overwrite the existing file when saving. Leaving this option unchecked will save a new report file each time the activity runs.
- Depending on the activity selected, you can also specify how many times to retry the activity on a device that fails. This is done by checking `Retry failed devices` and entering the number of attempts CatTools should make during a specified time interval (in minutes).
- You may need to define additional activity options, depending on the activity type being configured.

Activities successfully added to Kiwi CatTools appear in the activities pane of the Kiwi dashboard.

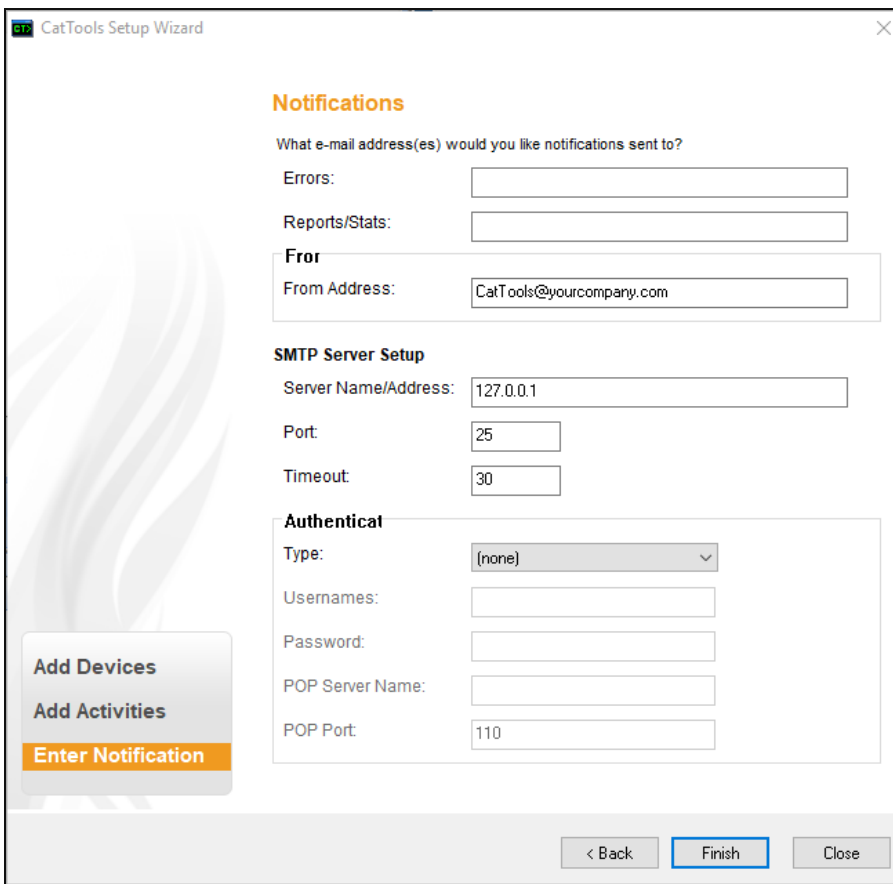


| Name | Type | # Days |
|--|------------------------------|--------|
| <input checked="" type="checkbox"/> Device.Backup.Running Config | Device.Backup.Running Config | 1 |

From the activities pane, you can enable or disable your activities from running against devices.

Configure your notification options

Once you have added an activity, you can identify where [notifications](#) should be sent when a specific activity - such as updating the password on a device - runs. You can enter separate email addresses for receiving error notifications versus reports. Complete required fields and follow on-screen prompts.



Notifications

What e-mail address(es) would you like notifications sent to?

Errors:

Reports/Stats:

From

From Address:

SMTP Server Setup

Server Name/Address:

Port:

Timeout:

Authenticat

Type:

Usernames:

Password:

POP Server Name:

POP Port:

Gotchas

- More than one email address can be entered in the "Errors" field and the "Reports/Stats" field. Multiple email addresses must be delimited by using a comma or semi-colon to separate each address.

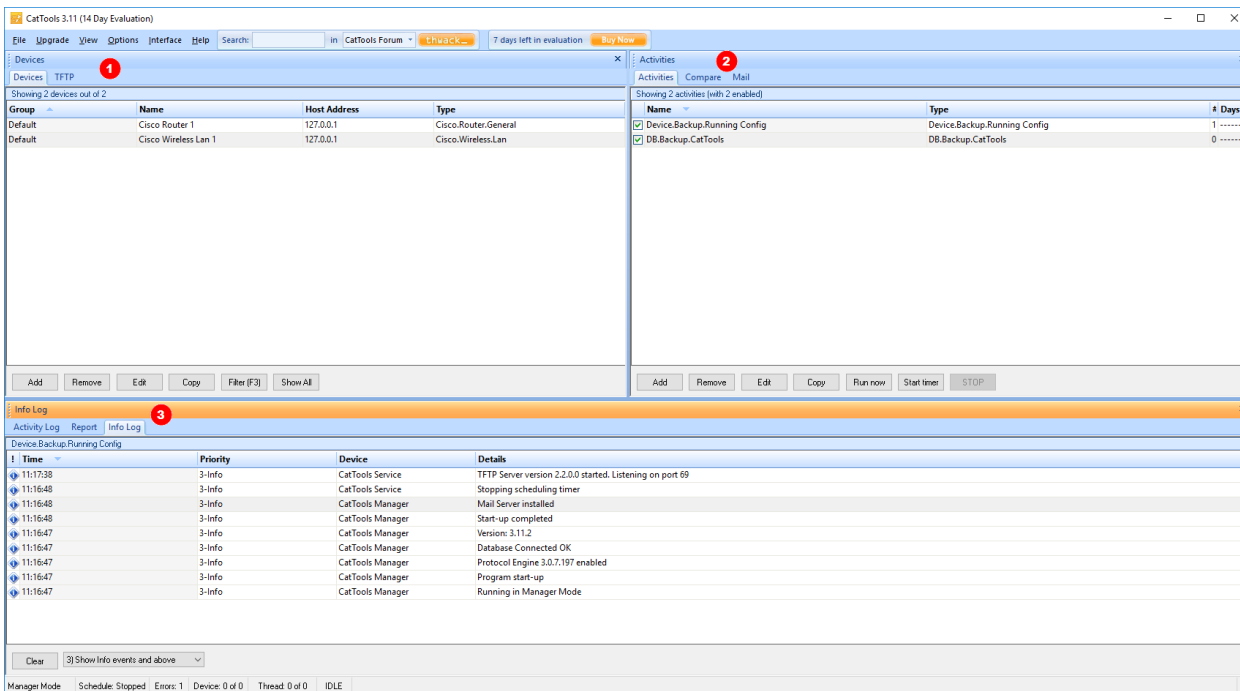
- The fields required for server authentication depend on the type of authentication selected: SMTP or POP.
 - If you select `SMTP AUTH`, enter the mail server user name and password.
 - If you select `POP authentication`, enter the mail server user name, password, POP server name, and POP port.
- At set intervals, the mailer connects to your mail server and sends messages that are in the alert queue. If your mail server is unavailable for sending alert emails, messages are saved in a queue until the server becomes available.

About the Kiwi CatTools Interface

After you have completed the [CatTools Setup Wizard](#), your monitored devices, activities, and logs live on the dashboard of Kiwi CatTools. From the dashboard, you can add, remove, or edit your devices, start and stop individual activities, view reports and logs, or customize your CatTools interface and theme.

Kiwi CatTools Dashboard Panes

The [Kiwi CatTools dashboard](#) provides a quick overview of the devices and activities that you have added and are currently monitored by your environment.



1 [Devices Pane](#)

Lists network devices currently in the CatTools database and Trivial File Transfer Protocols (TFTP) messages.

- The Devices tab lists the devices you have defined.
- The TFTP tab lists messages originating from the CatTools TFTP server.

- | | |
|---|---|
| <p>2 Activities Pane</p> | <p>Provides information about configured activities, comparison reports, and queued messages.</p> <ul style="list-style-type: none"> • The Activities tab allows you to start, stop, and configure individual activities. • The Compare tab enables you to generate a comparison report of two files of your choice. • The Mail tab displays messages and alerts currently in the mail queue waiting to be sent. |
| <p>3 Logs and Reports Pane</p> | <p>Lists activity logs, reports, and information logs based on activities that have been executed against devices in the CatTools database.</p> <ul style="list-style-type: none"> • The Activity Log tab displays a log of all activities that have run since CatTools was started the last time. • The Report tab enables you to open any text reports that are created by CatTools. • The Info Log tab displays a grid of all messages displayed by CatTools while it is running, in the order that they occur. |

Example scenario: Use CatTools to update passwords on multiple devices

Here is a common scenario: several of your network devices use an server for remote authentication and according to your company's security policy, the password for each of the devices must be updated. Normally, after updating the server password, you have to manually edit each network device individually to apply the new password.

Using the Kiwi CatTools `DB.UpdateDevice.Password field` activity, this process can be automated to push the new password to all of your devices at once. Additionally, to avoid disrupting productivity, you decide to run this activity Friday at midnight.

1. Using the Setup wizard, add your devices to Kiwi CatTools and ping to confirm your connection.
2. After adding required device information, continue to Add Activity.
3. Select `DB.UpdateDevice.Password field` as the activity type.
4. Enter a unique name and a description for the activity.
5. For Persistence, select `Run once then deactivate`.
6. Select the folder where you want to save the log file for this activity, if different from the default location.

7. Select `Maximum available` for `Client Threads`, and then click `Next`.
8. On the `Add Activity Schedule` window, configure the activity to run on `Friday` at `midnight`:
 - a. Select `At midnight` from the drop down list.
 - b. Select `Friday` under `Days of the week`.
9. Click `Next`.
10. On the `Activity Options` window, select `AAA Password` and enter the new server password in the `SSH password` field.
 - a. (Optional) The `Stop of error` check box will quit the activity should an error be encountered at any stage of processing.
11. Click `Next` to add the activity to `Kiwi CatTools`.

Now on `Friday` at `midnight`, `Kiwi CatTools` will automatically begin to change the passwords on network devices maintained in the `CatTools` database `Device` table.

Beyond Getting Started with Kiwi CatTools

After you have started using Kiwi CatTools, check out the [Kiwi CatTools Administrator Guide](#). The administrator guide provides additional techniques and configuration options that can help you to effectively manage your day-to-day network automation and configuration tasks. The admin guide covers topics such as creating custom scripts, configuring additional activities to run against your devices, and troubleshooting device-specific issues.

Have other questions about Kiwi CatTools?

Join the SolarWinds IT community on [THWACK](#), or find more information in the SolarWinds [Success Center](#). To learn how to open a support ticket and get your case optimal visibility, see [SolarWinds Customer Support Information](#).

KCT Getting Started - Additional resources

Here are some additional resources to help you learn more about SolarWinds and how to get the most from KCT and other SolarWinds products.

- [New to SolarWinds](#)
- [Virtual Classroom Office Hours](#)
- [On-demand Classes](#)
- [SolarWinds SmartStart Onboarding Program](#)