

RURALIZATION

Innovative land practices for an agricultural transition and rural regeneration:
documenting and analysing current practices



"The project RURALIZATION has received funding from the European Union's Horizon 2020 research and innovation programme under grant agreement N°817642."

*The opinions expressed in this document reflect only the author's view and in no way reflect the European Commission's opinions. The European Commission is not responsible for any use that may be made of the information it contains.

Combination of issues to which these initiatives provide answers



Legal and market issues

- Land concentration & "closed" markets
- Growing disconnection between land prices and agricultural profitability
- Difficulties in farms' succession
- Potential insecurity regarding leases
- Supporting farming systems that do not rely on farm expansion

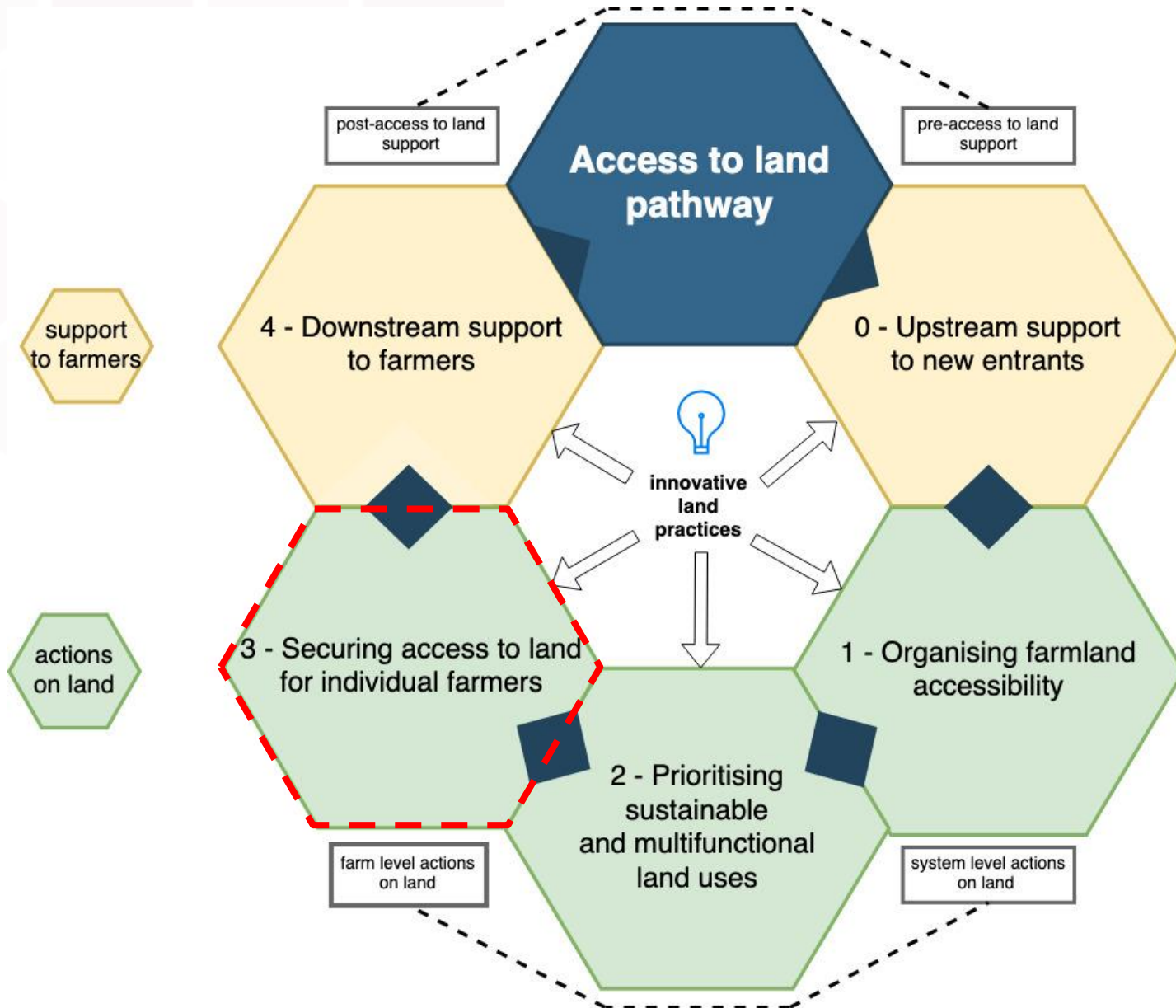
Issues related to new entrants' profiles

- Less **technical** background
- Less **financial capital**
- Less **introduced** in **local networks**

In specific:

- **Agricultural contexts (structures, production and demand),**
- **Land contexts (land policies and land market's structure),**
- **Institutional, partnership and socio-cultural contexts**

Categorisation of practices: the “access to land pathway”



EXAMPLE OF PRACTICES: Lurzaindia, Basque Country / FRANCE



- **1979-2012:** collective ownership (GFA) of about 15 farms (all types of production)
 - **2013:** GFA turned into a **Community Land Trust (SCA)**
+ 10 farms acquired
 - **2019:** creation of an **endowment fund** (2019)
- Community Land Trust (based on TDL's model): **sustainability of shares** and **greater fundraising capacities**
- Governance combining different local organisations: a farmers' organisation (CP), consumers (CSAs) and organisations supporting small-scale agriculture
- **An organisation relying on land regulation tools:**
 - **Context:** land prices raised by +28% between 2000-2010
 - Observation of land transactions and the habit to ask the Safer (land agency) to use its right of pre-emption with price revision if land is sold at an overstated price

EXAMPLES OF PRACTICES: APAEEF, Ibiza and Formentera / SPAIN



A « land bank » managed by the farmers themselves

- 2012: organic producers' association launches a "land bank":
 - **to avoid land abandonment or to recultivate abandoned land**
 - **facilitate generation renewal**
 - **regenerate agricultural activity** on these islands (declining as a result of the increasing importance of tourism)
- Principles: **promote organic farming**, ensure **mediation between land owners & new farmers** around **contractualisations** on **agro-ecological practices**
- Today: 5 contracts (5 farmers) on 50 ha + support on organic farming practices
- Support at the **upstream** level
- Promotion of the **marketing** of the production of the members of the association through a **cooperative**

Main study results

- 1) Land innovations have strong capacity to act on land formerly used by members of the initiative network **or land already cultivated sustainably** VS difficulties of action on other types of land
- 2) Strong **reliance on human capital** (11 partnerships on average) but also emphasis of innovations on generating human capital (growing the community of stakeholders concerned by land issues through training, awareness raising, etc.)
- 3) Positive impact on rural regeneration through **systemic action**: land innovations provide local food and jobs, preserve the environment and landscapes, encourage generational renewal and vibrant local communities...

Potential policy changes

Innovative actions: 4 main building block for upscaling

1) Supporting the reinforcement of **human capital** (*as mentioned*)

2) **Adapting land regulation to new entrants:**

- *Few/no established policies and legal instruments to provide access to land for new generations*
- *Some existing instruments could be better directed at new entrants & their performance could be improved (e.g. “land carrying”)*
- *How can we regulate land transfers in favour of new entrants as use transfers are mainly happening through lease transfers and family successions?*

3) Boosting **the role of local authorities** to promote novel agricultural models:

- *Systematisation of territorial food projects? (+ Which use of public land?)*
- *The possibility for local authorities to pre-empt farmland? To strengthen land preservation?*

4) **Changing the CAP framework** to foster access to land:

- *In most regions, CAP payments are higher than the level of rent for farmland*
- *First pillar mostly directed towards farms producing undifferentiated agricultural commodities **locked into expansion strategies***
- **Promote the use of LEADER funds** to foster local initiatives favouring access to land



RURALIZATION

Thank you!

www.ruralization.eu

a.martin-prevel@terredeliens.org

w.loveluck@terredeliens.org