

# Tropospheric NO<sub>2</sub> retrieval algorithm for geostationary satellite instruments: applications to GEMS

Sora Seo<sup>1</sup>, Pieter Valks<sup>1</sup>, Ronny Lutz<sup>1</sup>, Klaus-Peter Heue<sup>1</sup>, Pascal Hedelt<sup>1</sup>, [Victor Molina Garcia<sup>1</sup>](#), Diego Loyola<sup>1</sup>, Hanlim Lee<sup>2</sup>, and Jhoon Kim<sup>3</sup>

- 5 <sup>1</sup>German Aerospace Center (DLR), Remote Sensing Technology Institute (IMF), Oberpfaffenhofen, Germany  
<sup>2</sup>Division of Earth Environmental System Science, Major of Spatial Information Engineering, Pukyong National University, Busan, Republic of Korea  
<sup>3</sup>Department of Atmospheric Sciences, Yonsei University, Seoul, Republic of Korea

10 *Correspondence to:* Sora Seo (sora.seo@dlr.de)

**Abstract.** In this study, we develop an advanced retrieval algorithm for tropospheric nitrogen dioxide (NO<sub>2</sub>) from the geostationary satellite instruments and apply it to Geostationary Environment Monitoring Spectrometer (GEMS) observations. Overall, the algorithm follows previous heritage for the polar orbiting satellites GOME-2 and TROPOMI, but several improvements are implemented to account for specific features of geostationary satellites.

- 15 The DLR GEMS NO<sub>2</sub> retrieval employs an extended fitting window compared to the current fitting window used in GEMS operational v2.0 NO<sub>2</sub> retrieval, which results in improved spectral fit quality and lower uncertainties. For the stratosphere-troposphere separation in GEMS measurements, two methods are developed and evaluated: (1) STRatospheric Estimation Algorithm from Mainz (STREAM) as used in the DLR TROPOMI NO<sub>2</sub> retrieval and adapted to GEMS, and (2) estimation of stratospheric NO<sub>2</sub> columns from the Copernicus Atmosphere Monitoring Service (CAMS) forecast Cy48R1 model data, which  
20 introduce full stratospheric chemistry as it will be used in the operational Sentinel-4 NO<sub>2</sub> retrieval. While STREAM provides hourly estimates of stratospheric NO<sub>2</sub>, it has limitations in describing small-scale variations and exhibits systematic biases near the boundary of the field of view. In this respect, the use of estimated stratospheric NO<sub>2</sub> columns from the CAMS forecast model profile demonstrates better applicability by describing not only diurnal variation but also small-scale variations. For the improved air mass factor (AMF) calculation, sensitivity tests are performed using different input data. In our algorithm,  
25 cloud fractions retrieved from the Optical Cloud Recognition Algorithm (OCRA) adapted to GEMS level 1 data are applied instead of GEMS v2.0 cloud fraction. OCRA is used operationally in TROPOMI and Sentinel-4. Compared to GEMS level 2 cloud fraction which is typically set to around 0.1 for clear-sky scenes, OCRA sets cloud fractions close or at 0. The OCRA-based cloud corrections result in increased tropospheric AMFs and decreased tropospheric NO<sub>2</sub> vertical columns, leading to  
30 NO<sub>2</sub> retrievals are assessed by comparing the GEMS v2.0 background surface reflectance (BSR) and TROPOMI Lambertian-equivalent reflectivity (LER) climatology v2.0 product. The differences between the two surface albedo products and their impact on tropospheric AMF are particularly pronounced over snow/ice scenes during winter. A priori NO<sub>2</sub> profiles from the

CAMS forecast model, applied in the DLR GEMS algorithm, effectively capture variations in NO<sub>2</sub> concentrations throughout the day with high spatial resolution and advanced chemical mechanism, which demonstrates its suitability for geostationary satellite measurements.

The retrieved DLR GEMS tropospheric NO<sub>2</sub> columns show good capability to capture hotspot signals at the scale of city clusters and describe spatial gradients from city centers to surrounding areas. Diurnal variations of tropospheric NO<sub>2</sub> columns over Asia are well described through hourly sampling of GEMS. Evaluation of DLR GEMS tropospheric NO<sub>2</sub> columns against TROPOMI v2.4 and GEMS v2.0 operational products show overall good agreement. The uncertainty of DLR GEMS tropospheric NO<sub>2</sub> vertical columns varies based on observation scenarios. In regions with low pollution levels such as open ocean and remote rural areas, retrieval uncertainties typically range from 10 % to 30 %, primarily due to uncertainties in slant columns. For heavily polluted regions, uncertainties in tropospheric NO<sub>2</sub> columns are mainly driven by errors in tropospheric AMF calculations. Notably, the total uncertainty in GEMS tropospheric NO<sub>2</sub> columns is most significant in winter, particularly over heavily polluted regions with low-level clouds below or near the NO<sub>2</sub> peak.

## 45 **1 Introduction**

Nitrogen oxides (NO<sub>x</sub>), the sum of nitrogen dioxide (NO<sub>2</sub>) and nitrogen oxide (NO), play an important role in many atmospheric chemistry processes in both the stratosphere and troposphere. In the stratosphere, NO<sub>x</sub> is involved in photochemical reactions with ozone by acting as a catalyst for ozone depletion while also restraining ozone destruction through the formation of chlorine and bromine reservoir species (Solomon, 1999; Seinfeld and Pandis, 2006). In the troposphere, NO<sub>x</sub> serves as essential precursors for ozone formation in the presence of volatile organic compounds (VOCs), influencing the concentrations of hydroxyl radicals (OH) and thereby the lifetime of methane (Sillman et al., 1990). Additionally, NO<sub>x</sub> contributes to secondary aerosol formation through gas-to-particle conversion (Shindell et al., 2009). Tropospheric NO<sub>2</sub>, responsible for both ozone and aerosol production, has significant impacts on air quality, human health, radiative forcing, and global climate change. Given its critical role, monitoring the concentration of NO<sub>2</sub> in the atmosphere is important.

Over the past few decades, NO<sub>2</sub> column measurements have been provided from polar sun-synchronous low-earth-orbiting (LEO) satellite instruments, including the Global Ozone Monitoring Experiment (GOME), SCanning Imaging Absorption SpectroMeter for Atmospheric CHartographY (SCIAMACHY) (Bovensmann et al., 1999), Ozone Monitoring Instrument (OMI) (Levelt et al., 2006), Global Ozone Monitoring Experiment-2 (GOME-2) (Callies et al., 2000; Munro et al., 2016), and Tropospheric Monitoring Instrument (TROPOMI) (Veefkind et al., 2012). These space-borne remote sensing measurements have contributed to our understanding of the global distribution of tropospheric NO<sub>2</sub> levels, their changes over time and estimates of emissions. However, the LEO instruments only observe NO<sub>2</sub> once a day at a specific local time, which has limitations in monitoring of diurnal variations in NO<sub>2</sub> due to variations in emissions and chemical reactions throughout the day. Ground-based measurements offer higher temporal sampling of atmospheric compositions within a day, but are limited in terms of spatial coverage. To address the shortcomings of the current atmospheric composition monitoring system, the

65 Geostationary Air Quality (Geo-AQ) constellation mission, consisting of three geostationary satellite sensors, i.e. Geostationary Environment Monitoring Spectrometer (GEMS) for Asia, Tropospheric Emissions: Monitoring of Pollution (TEMPO) for North America, and Sentinel-4 (S4) for Europe, was coordinated by the Committee on Earth Observation Satellites (CEOS) (Zoogman et al., 2017; Kim et al., 2020).

70 The GEMS instrument on board the Geostationary Korea Multi-Purpose Satellite-2B (GEO-KOMPSAT-2B), launched in February 2020, is the first geostationary satellite to monitor air quality at an unprecedented spatial and temporal resolution and has been provide continuous hourly observations over Asia (Kim et al., 2020). GEMS is a step-and-stare UV-visible imaging spectrometer, which combines a scan mirror with a push-broom design. As the mirror scans from east to west, it captures light from a narrow strip on Earth oriented in the north to south direction, reflecting it into the telescope. The spectral coverage of GEMS is 300-500 nm wavelength range with a spectral resolution of 0.6 nm. The imaging process takes 30 minutes, followed  
75 by a transmission time of 30 minutes. The field of view (FOV) of GEMS covers the East and Southeast Asia (5 °S - 45 °N, 75 - 145 °E). The nominal spatial resolution is 7 km x 8 km at a reference location, specifically Seoul, South Korea. However, it is important to note that the spatial sampling distance varies across the geographic coverage area due to projection and curvature effects. NO<sub>2</sub> measurements from GEMS can be beneficially used for ground-level concentration estimates and emission strengths. In particular, the hourly sampling with a high spatial resolution allows for a detailed analysis of the diurnal evolution of NO<sub>2</sub> and local distribution of emission sources over Asia, where air quality monitoring has emerged as an  
80 important issue due to rapid economic development and urbanization in past decades, for the first time from space.

In this study, we present a NO<sub>2</sub> retrieval algorithm designed for geostationary satellites using GEMS measurements. The DLR GEMS NO<sub>2</sub> retrieval algorithm is based on a heritage of NO<sub>2</sub> retrieval from previous LEO satellites, following a common approach consisting of three key steps: (1) the spectral retrieval of total NO<sub>2</sub> slant columns, (2) the separation of slant columns  
85 into stratospheric and tropospheric contributions, and (3) the conversion of tropospheric slant columns to tropospheric vertical columns using air mass factors (AMFs). However, to account for the characteristics of the geostationary satellite, such as hourly sampling, limited geographical coverage, and larger zenith angles, we develop and implement a number of improvements in the DLR GEMS NO<sub>2</sub> retrieval algorithm. To estimate the stratospheric contribution and describe the diurnal variation of stratospheric fields, an improved stratosphere-troposphere separation approach using the Copernicus Atmosphere  
90 Monitoring Service (CAMS) global forecast model data is developed and evaluated by comparing it with the results obtained from an existing refined spatial filtering method. For the improved tropospheric AMF calculation, sensitivity tests are performed using different input datasets regarding cloud properties, surface albedo and a priori NO<sub>2</sub> profiles. A detailed description of the DLR NO<sub>2</sub> retrieval algorithm for the GEMS instrument is provided in Sect. 2. In Sect. 3, we present examples of applying the retrieval algorithm to GEMS measurements, highlighting its capability in monitoring of diurnal variability.  
95 Also, DLR GEMS tropospheric NO<sub>2</sub> retrievals are evaluated in comparison with the operational TROPOMI v2.4 and GEMS v2.0 L2 NO<sub>2</sub> products. Section 4 contains a summary and conclusions.

## 2. DLR GEMS NO<sub>2</sub> retrieval algorithm

Independent from the operational processing, the scientific NO<sub>2</sub> retrieval algorithm for GEMS instrument is developed at DLR. The DLR GEMS NO<sub>2</sub> retrieval algorithm mainly follows a classical three-step scheme used in the previous satellites, with several improvements to account for specific aspects of GEMS geostationary instrument. First, the retrieval of a total NO<sub>2</sub> slant column density (SCD) from the level 1 radiance and irradiance spectra measured by GEMS using a Differential Optical Absorption Spectroscopy (DOAS) technique (Platt and Stutz, 2008). To determine the tropospheric NO<sub>2</sub> slant column, the stratospheric contribution is estimated and removed from the total slant column, after which both total and tropospheric slant column densities are converted to vertical column densities (VCDs) by the application of AMFs. [Table 1 summarizes the key parameters and approaches for GEMS tropospheric NO<sub>2</sub> retrievals from the DLR \(this study\) and GEMS operational v2.0 algorithm.](#) Each step of the DLR GEMS NO<sub>2</sub> retrieval algorithm is described in detail in the sections below.

**Table 1. Overview of the GEMS tropospheric NO<sub>2</sub> retrievals from the DLR (this work) and GEMS operational v2 algorithm.**

		<a href="#">DLR GEMS (this work)</a>	<a href="#">GEMS operational v2.0 (Park et al., 2020)</a>
<a href="#">Spectral fit settings for slant column retrievals</a>	<a href="#">Fitting window</a>	<a href="#">425 – 480 nm</a>	<a href="#">432 - 450 nm</a>
	<a href="#">Reference spectrum</a>	<a href="#">Daily solar irradiance</a>	<a href="#">Daily solar irradiance</a>
	<a href="#">Absorption cross - sections</a>	<a href="#">NO<sub>2</sub>, O<sub>3</sub>, H<sub>2</sub>O<sub>vap</sub>, H<sub>2</sub>O<sub>liq</sub>, O<sub>4</sub></a>	<a href="#">NO<sub>2</sub>, O<sub>3</sub>, H<sub>2</sub>O<sub>vap</sub>, O<sub>4</sub></a>
	<a href="#">Pseudo absorbers</a>	<a href="#">Ring, Polarization sensitivity</a>	<a href="#">Ring</a>
	<a href="#">Polynomial</a>	<a href="#">Fourth order</a>	<a href="#">Second order</a>
<a href="#">Stratosphere-troposphere separation</a>		<a href="#">Stratospheric NO<sub>2</sub> estimation based on the CAMS forecast IFS Cy48R1 profile (detailed in Sect. 2.2.2)</a>	<a href="#">Approach based on Bucsele et al. (2013)</a>
<a href="#">Auxiliary input parameters for AMF calculations</a>	<a href="#">Cloud parameter</a>	<a href="#">Cloud fraction: OCRA adapted to GEMS (detailed in Sect. 2.3.1.2)</a> <a href="#">Cloud pressure: GEMS cloud v2.0 (Kim et al., 2024)</a>	<a href="#">Cloud fraction and pressure from GEMS cloud v2.0</a>
	<a href="#">Surface albedo</a>	<a href="#">GEMS BSR v2.0 (Sim et al., 2024)</a>	<a href="#">GEMS BSR v2.0</a>
	<a href="#">A priori NO<sub>2</sub> profile</a>	<a href="#">CAMS forecast IFS Cy48R1 (Eskes et al., 2024)</a>	<a href="#">Monthly mean hourly NO<sub>2</sub> profiles simulated from GEOS-Chem v13</a>

### 2.1 DOAS slant column retrieval

The NO<sub>2</sub> slant column is retrieved using the DOAS method (Platt and Stutz, 2008), which quantifies the amount of NO<sub>2</sub> along the atmospheric light path based on Beer-Lambert's law. The main concept of DOAS is to separate the wavelength dependent absorption signal into two components: the high frequency structures of absorption cross sections used for the retrieval of trace gases and the low frequency part arising from scattering by molecules and particles, as well as reflection at the surface, treated

115 as a closure term that is fitted by a low-order polynomial. From the backscattered spectra measured by the instrument, the DOAS retrieval is performed by a least-squares fit from the following equation (1):

$$\ln \left[ \frac{I(\lambda) + offset(\lambda)}{I^0(\lambda)} \right] = - \sum_g S_g \sigma_g - \alpha_R R(\lambda) - P(\lambda) \quad (1)$$

The measurement-based term is defined as the natural logarithm of the measured earthshine spectrum  $I(\lambda)$  divided by the daily solar irradiance spectrum  $I^0(\lambda)$ . An intensity offset correction  $offset(\lambda)$  is fitted as an additional linear term to correct issues related to incomplete removal of straylight in the spectrometer, inelastic scattering in the ocean water, and dark current in the level 1 spectrum (Paltt and Stutz, 2008; Richter et al., 2011). [The effect of the intensity offset correction on GEMS NO<sub>2</sub> slant column retrievals is described in more detail in Appendix A1.](#)

In this study, the fitting window for NO<sub>2</sub> is extended from 425 to 480 nm, compared to the fitting window of 432-450 nm currently used in the operational GEMS v2.0 NO<sub>2</sub> retrieval. The use of a large fitting interval generally leads to a reduction in noise on the slant column retrievals. However, significant improvements can be achieved only if the level 1 spectra maintain homogeneous quality over the spectral fitting range. Since saturation effects over bright clouds are detected at shorter wavelengths, and absorptions by NO<sub>2</sub> become relatively less significant improvements with extension to shorter wavelengths below 425 nm (Richter et al., 2011), the lower limit of the fitting window for GEMS NO<sub>2</sub> is determined as 425 nm. In addition, the upper limit is set at 480 nm due to systematic spectral features observed in DOAS fitting at wavelengths above ~ 480 nm. The spectral effect from the absorption of species  $g$  is characterised by the fitted slant column density  $S_g$  and the associated absorption cross section  $\sigma_g$ :

- NO<sub>2</sub> absorption at 220 K from Vandaele et al. (2002)
- O<sub>3</sub> absorption at 243 K from Serdyuchenko et al. (2014)
- Water vapor (H<sub>2</sub>O<sub>vap</sub>) absorption at 293 K from Rothman et al. (201), rescaled as in Lampel et al. (2015)
- Oxygen dimer (O<sub>4</sub>) absorption at 293 K from Thalman and Volkamer (2013)
- 135 - Liquied water (H<sub>2</sub>O<sub>liq</sub>) absorption at 297 K from Pope and Fry (1997), smoothed as in Peters et al. (2014)
- Pseudo cross-section for polarization correction

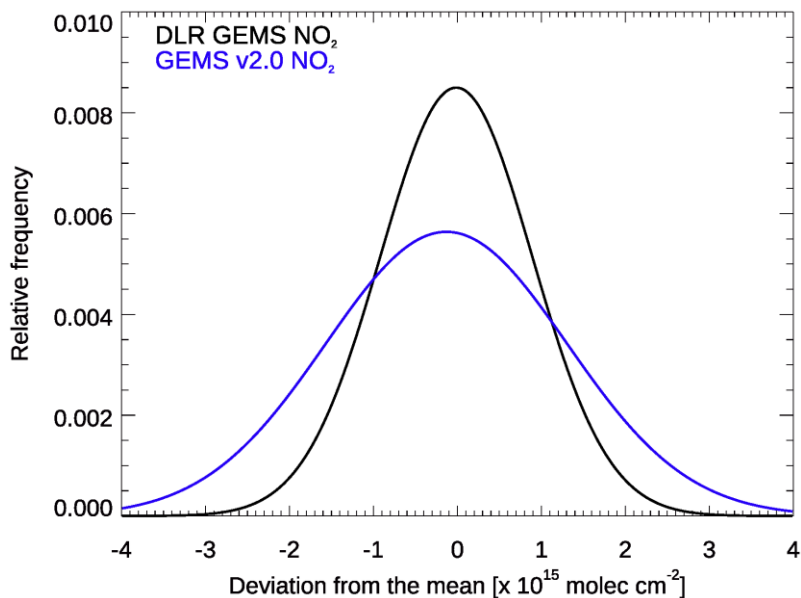
High-resolution absorption cross-sections are pre-convolved with the GEMS instrument's spectral response function. Given the relative smoothness of these convolved cross-sections, interpolation to the radiance wavelength grid is performed through spline interpolation. The second term on the right-hand side of Eq. (1) is Ring reference spectrum  $R(\lambda)$  with the Ring scaling parameter  $\alpha_R$  to describe the filling-in effect of Fraunhofer lines by inelastic rotational Raman scattering, Ring effect. The last term is the closure polynomial approximated by a fourth-order polynomial  $P(\lambda)$ .

In the NO<sub>2</sub> slant column retrieval, a single NO<sub>2</sub> cross-section reference spectrum measured at a fixed temperature 243 K is used as a convenient approach. However, as the amplitude of the differential cross-section features shows a temperature dependence, a posteriori temperature correction for the difference between the atmospheric temperature and the reference cross-section temperature is performed in the air mass factor calculation to account for the temperature sensitivity of NO<sub>2</sub>

based on Boersma et al. (2004). In addition to the trace gas absorption cross sections, a pseudo cross-section is added in the DOAS fit to correct for remaining polarization correction problems found in the GEMS radiance spectrum.

To assess the uncertainty estimates of GEMS NO<sub>2</sub> slant columns, we performed a statistical analysis by quantifying the spatial slant column variability over the pristine tropical Pacific region (Boersma et al., 2007; Zara et al., 2018). This clean reference region (5 °S – 5 °N and 80 – 130 °E) is divided into small boxes (1° × 1°), ensuring statistically robust sampling and minimizing contributions from other pollutions and geophysical variability. We assume that variability within the box is attributed to random uncertainty originating from noise in the level 1 data and imperfections in the spectral fitting retrieval. It is notable that measurements with relative geometric AMF variability exceeding 5 % are excluded to mitigate the influence of variability in viewing geometry on the results. In practice, slant columns in each box are observed under similar viewing geometries.

Figure 1 shows the distribution of the deviation of NO<sub>2</sub> slant columns from the corresponding box mean value for the DLR GEMS and GEMS v2.0 L2 product. The distribution of slant column deviation is a nearly Gaussian shape, and the width (1σ) of the Gaussian function fitted to the distribution can be used as an indicator of the statistical uncertainty estimate. The width of the Gaussian is about  $0.90 \times 10^{15}$  and  $1.44 \times 10^{15}$  molec cm<sup>-2</sup> for the DLR GEMS and the GEMS operational v2.0 retrieval, respectively, which suggests a better quality of spectral fitting results in the DLR GEMS, given the use of GEMS L1 v1.2.4 spectra. The improved NO<sub>2</sub> slant column retrieval with lower uncertainties in the DLR GEMS is mainly attributed to employing a larger fitting window, which includes more spectral points and provides relevant absorption cross sections. The use of pseudo cross-section for polarization correction ~~has a minor effect on the NO<sub>2</sub> fit quality (-0.02 %), leading to a slight improvement in systematic biases.~~ improves the quality of NO<sub>2</sub> fitting, particularly over the ocean where specular reflection occurs, resulting in a more homogenous spatial distribution of NO<sub>2</sub> slant columns. Additionally, the impact of polarization correction varies with the time of day, being more pronounced during sunrise and sunset when the solar zenith angle is higher, compared to noon. A more detailed analysis is provided in Appendix A2.



170 **Figure 1: Gaussian fits for the deviation of GEMS NO<sub>2</sub> slant columns from corresponding (1° × 1°) box mean values in the equatorial reference sector (5° S – 5° N; 80 – 130° E) for March 2023 from the DLR GEMS (black) and GEMS operational v2.0 algorithms (blue). The width of the Gaussian provides an estimate of the slant column uncertainty ( $\sigma_{DLR\ GEMS} = 0.903 \pm 0.003 \times 10^{15}$  molec cm<sup>-2</sup>,  $\sigma_{GEMS\ v2.0} = 1.436 \pm 0.009 \times 10^{15}$  molec cm<sup>-2</sup>).**

## 2.2 Stratosphere-troposphere separation

175 The slant column retrieved by the DOAS fit contains all NO<sub>2</sub> absorption along the atmospheric light path including both the stratosphere and troposphere. To determine the tropospheric NO<sub>2</sub> column, which is of primary relevance for air quality, a separation of the stratospheric and tropospheric contributions from the total column is a crucial step. A variety of stratosphere-troposphere separation methods have been developed for global sun-synchronous instruments. However, to be applied in the geostationary satellite instrument, there are following points that need to be resolved in existing stratospheric separation

180 methods. First of all, GEMS samples diurnal variability and requires hourly estimates of stratospheric columns during daytime, which differs from the LEO instruments. The diurnal variability of NO<sub>2</sub> in the stratospheric field derived by chemical reactions and dynamics should be accurately described in the geostationary stratosphere-troposphere separation, which demands detailed stratospheric chemistry schemes. Secondly, the number of unpolluted clean pixels in the GEMS FOV for each hour is very limited, which makes it challenging to employ a reference sector method using hourly GEMS measurements. Third, as GEMS

185 measurements cover only a portion of the globe, assimilation approaches where model predictions of stratospheric NO<sub>2</sub> columns are adjusted towards the observed satellite NO<sub>2</sub> columns have limitations in accounting for the effects of atmospheric transport across the domain boundaries. Therefore, the stratosphere-troposphere separation approaches used in polar orbiting

satellites should be modified and further developed to suit the GEMS geostationary instrument. In this section, we describe and evaluate two different approaches for stratosphere-troposphere separation for GEMS measurements.

190

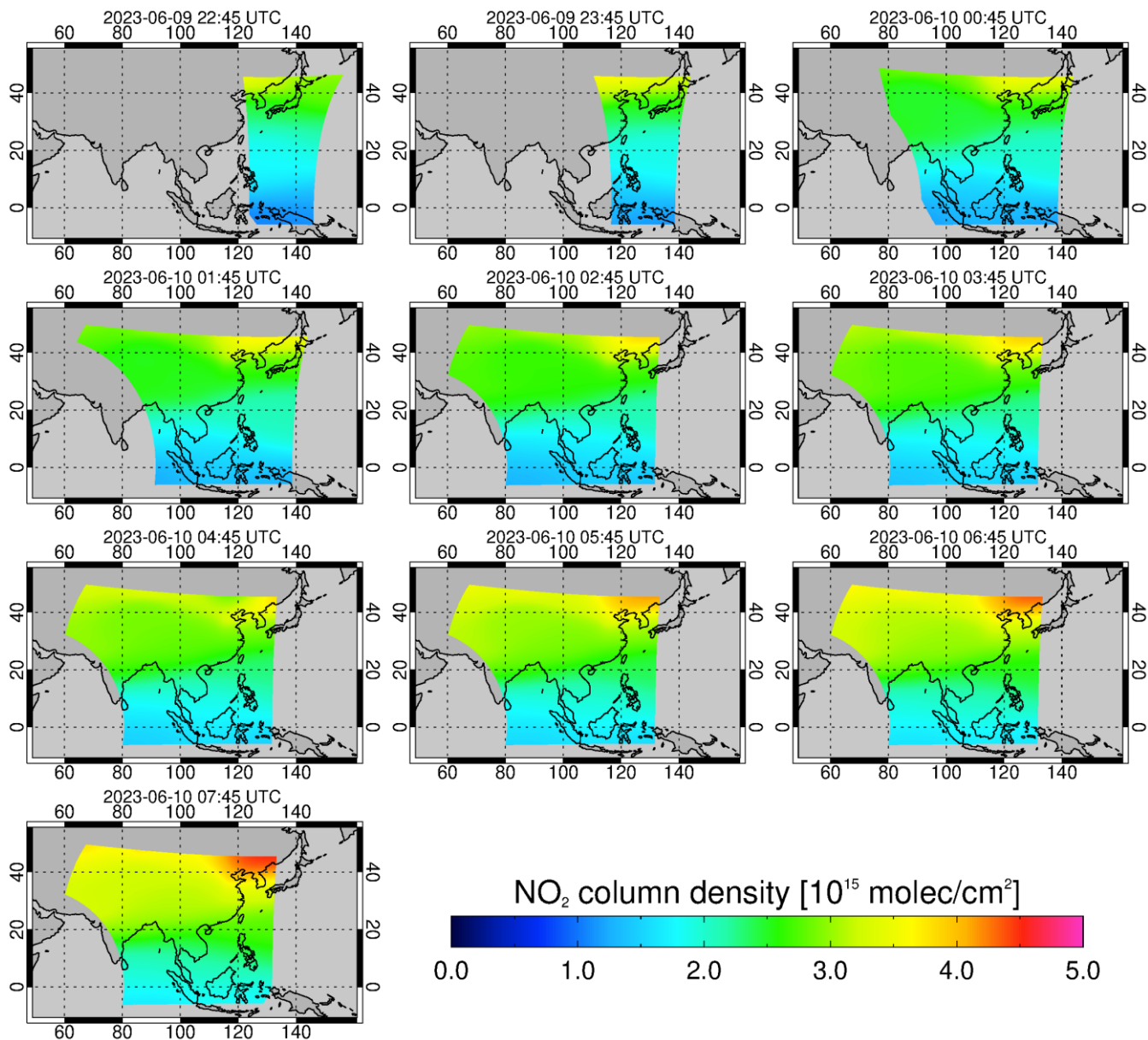
### 2.2.1 STREAM adapted to GEMS measurements

The STRatospheric Estimation Algorithm from Mainz (STEAM) is an advanced reference sector method using total NO<sub>2</sub> column measurements over clean, remote regions as well as over clouded scenes with negligible tropospheric NO<sub>2</sub> abundance (Beirle et al., 2016). STREAM calculates weighting factors for each satellite pixel by assigning a high weight to cloudy observations and a low weight to polluted observations, and the weights are further adjusted in the case of large biases in the tropospheric residues. Based on these weighting factors, stratospheric NO<sub>2</sub> fields are derived through a weighted convolution of total columns using convolution kernels, which are designed to be wider at lower latitudes to account for the low zonal variability assumption of stratospheric NO<sub>2</sub> and narrower at higher latitudes to reflect the stronger natural variations. STREAM has been successfully adapted to the polar orbiting satellites and utilized as a complement to the stratosphere-troposphere separation based on data assimilation used in the TROPOMI operational algorithm with the advantage of requiring no model input (Beirle et al., 2016; Song et al., 2021).

While STREAM demonstrates good performances in stratospheric correction for LEO instruments, its applicability to GEMS observations should be evaluated since geostationary instruments, unlike LEO instruments, have to predict hourly stratospheric fields over a limited geographic domain. Here, we apply the STREAM to GEMS measurements and evaluate its performance. The STREAM settings for GEMS closely resemble those used in TROPOMI measurements, except for the a priori removal of the overall latitude dependency in the reference sector. This adjustment is necessary due to the unavailability of the Pacific reference sector from GEMS measurements. Additionally, we optimized the definition of the spatial convolution kernel to suit GEMS observation conditions. A pollution weight, representing the potential tropospheric contribution to the total column, is based on our a priori knowledge of the mean spatial distribution of tropospheric NO<sub>2</sub> columns derived from three years of TROPOMI measurements (2018-2020). Based on the pollution weight, as well as the cloud weight and tropospheric weight, STREAM estimates stratospheric fields for the hourly scans through a weighted convolution on  $0.5^\circ \times 0.5^\circ$  grid pixels.

The adaptation of STREAM to GEMS data successfully yields hourly stratospheric estimates with reasonable values as shown in Fig. 2. The overall diurnal variability, as well as latitudinal and longitudinal dependencies, are clearly reflected in the stratospheric fields retrieved by STREAM. However, its application to GEMS causes systematic biases near the borders of FOV due to the broader effects of weighted convolution over the limited spatial domain compared to global application. Additionally, STREAM has limitations in estimating small-scale stratospheric features caused by stratospheric dynamics and chemistry, such as free-tropospheric intrusions of NO<sub>2</sub>, due to relatively wide spatial convolution and a lack of supporting information.





220

**Figure 2: Diurnal variation of estimated stratospheric NO<sub>2</sub> columns from STREAM adapted to the DLR GEMS NO<sub>2</sub> retrieval algorithm (described in Sect. 2.2.1) on 10 June 2023. The scan hour spans from 9 June 2023 22:45 UTC (10 June 2023, 07:45 Korea Standard Time) to 10 June 2023 07:45 UTC (10 June 2023, 16:45 KST).**

## 225 2.2.2 Estimation of stratospheric NO<sub>2</sub> using the CAMS forecast model data

While the application of STREAM to GEMS stratosphere-troposphere separation offers advantages, such as not requiring any inputs from chemical transport models and providing gradients of stratospheric NO<sub>2</sub> within general uncertainties, it is not

accurate enough to capture the diurnal variability of the stratospheric NO<sub>2</sub> on small-scales. Therefore, we developed and evaluated an advanced approach for the stratosphere-troposphere separation method for geostationary satellite observations of NO<sub>2</sub> columns utilizing the NO<sub>2</sub> profile data from the chemical transport model that incorporates comprehensive stratospheric chemistry.

The ECMWF's Integrated Forecast System (IFS) is the global atmospheric model used by the CAMS to provide analysis and forecast of atmospheric compositions including reactive trace gases, greenhouse gases and aerosols (ECMWF, 2023). Currently, the CAMS global model includes a chemistry scheme based on a CB05-based carbon-bond mechanism with the option to couple with stratospheric chemistry from the Belgian Assimilation System for Chemical Observations (BASCOE) system. The first operational version combining the BASCOE module became available in the CAMS global atmospheric composition forecast system following the upgrade to cycle 48R1 since June 27, 2023 (Chabrilat et al., 2023; Eskes et al., 2024). This upgrade to CAMS IFS Cy48R1 (referred to as "CAMS forecast" throughout this study) introduced comprehensive stratospheric chemistry based on the BASCOE chemistry scheme, enabling the representation of the diurnal cycle of stratospheric NO<sub>2</sub>. With a high spatial resolution of 0.4° × 0.4° and 137 vertical layers, the CAMS forecast model is suitable for application in GEMS observations. The current time step of the CAMS forecast output is 3 hours, but this can be improved further in the future. The upgrade of CAMS global forecast model system to Cy48R1 was validated using a number of independent measurement datasets (Eskes et al., 2023b; Eskes et al., 2024). Validation results demonstrate significant improvements in the ozone profile in the lower-middle stratosphere and stratospheric NO<sub>2</sub> due to the inclusion of full stratospheric chemistry. In particular, an evaluation of monthly mean stratospheric NO<sub>2</sub> columns from the CAMS forecast model against those retrieved using TROPOMI observations based on the STREAM method showed good agreement in terms of absolute amounts, zonal distributions and temporal variations of stratospheric NO<sub>2</sub>. The CAMS forecast model well represents the stratospheric NO<sub>2</sub> column amounts within ~10 % deviation range from TROPOMI stratospheric columns and reproduces the general increase in stratospheric NO<sub>2</sub> at high latitudes in the summer hemisphere by reflecting the stratospheric chemistry and dynamic (Eskes et al., 2024).

Based on the good validation results of CAMS stratospheric NO<sub>2</sub>, we estimate the stratospheric NO<sub>2</sub> column for GEMS using the CAMS model forecasts of stratospheric NO<sub>2</sub> profiles. Although the CAMS global forecast system realistically describes the variability of stratospheric NO<sub>2</sub> fields over time and region, there exists a bias between the model estimates and satellite observations. Hence, it is essential to analyse spatial and temporal bias patterns and apply bias corrections to the model-estimated stratospheric NO<sub>2</sub> columns to adapt the model data to the stratosphere-troposphere separation in satellite retrieval algorithms. To calculate the model bias patterns, synthetic initial (geometric) total NO<sub>2</sub> columns  $V_{init}^{model}$  are first calculated as follows:

$$V_{init}^{model} = \frac{S_{total}^{model}}{M_{strat}} = \frac{V_{total}^{model} \times M_{total}}{M_{strat}} \quad (2)$$

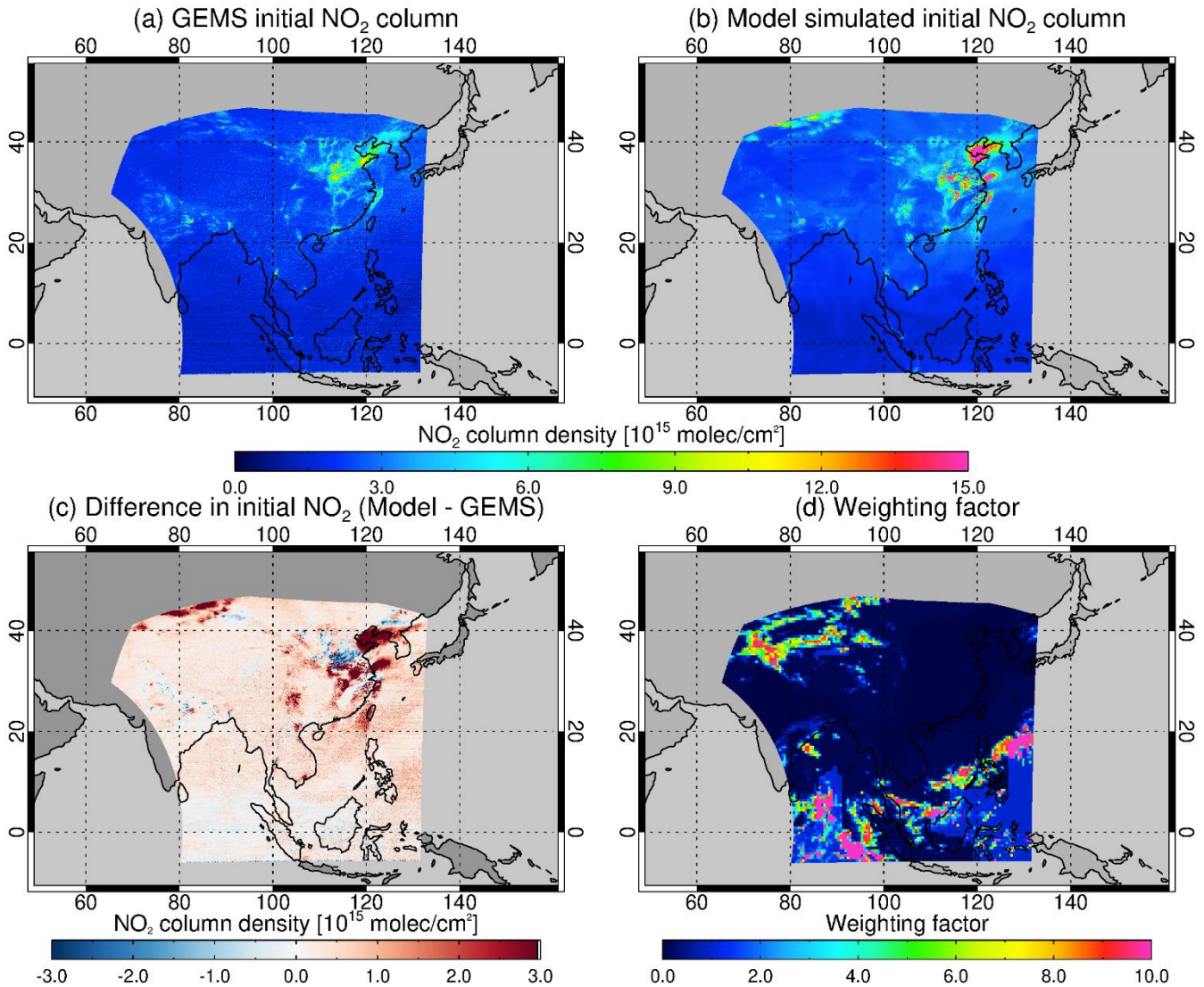
Modelled NO<sub>2</sub> total slant columns  $S_{total}^{model}$  are based on the total vertical columns  $V_{total}^{model}$  from the CAMS forecast model profile with interpolation to match the GEMS centre pixel coordinate and measurement time. Total AMFs  $M_{total}$  and

260 stratospheric AMFs  $M_{strat}$  are derived considering surface properties and cloud information for GEMS orbital data and with CAMS forecast a priori  $\text{NO}_2$  profiles for the whole atmosphere and between the tropopause height and the top of the atmosphere, respectively. Figure 3 and 4 present the observed initial total  $\text{NO}_2$  columns from GEMS (a), the simulated initial total  $\text{NO}_2$  columns derived from the CAMS forecast profile (b), and differences between the model synthetic and satellite  
265 satellite observed initial columns show similar spatial distributions and value ranges in  $\text{NO}_2$  columns, biases are apparent, particularly with larger biases over polluted regions, as illustrated in the difference map.

To investigate the patterns of model biases in the stratosphere, it is necessary to focus on pixels where the tropospheric contribution to the slant column is minimal. Here, we apply a selection rule based on the weighting factor approach used in the STREAM to find pixels with dominant stratospheric contributions (Fig. 3d and 4d). Clouded or clean background pixels,  
270 where tropospheric influence is minimal and direct estimates of the stratospheric field are provided, are assigned high weights. Conversely, polluted pixels dominated by the influence of tropospheric sources are assigned low weights close to 0. The weighted model biases are determined by applying the weighting factors to model biases (i.e., the modelled columns minus the observed columns), which allows for the analysis of the impact of model biases on the stratospheric fields. Assuming that model biases in the stratospheric field depend on latitude and observation time (local time of day), the weighted model biases  
275 for respective pixels are fitted with a low-order ~~bivariate~~ polynomial as a function of ~~latitude~~these variables for each GEMS scan hour (see Fig. 5). This polynomial fit for model bias correction acts as a low-pass filter, ensuring zonal smoothness and mitigating artifacts that may arise from unfiltered tropospheric contributions. Model bias patterns are calculated and parameterized on a daily basis, and new bias patterns are applied accordingly. In Fig. 6, the modelled stratospheric  $\text{NO}_2$  vertical columns (a, c) and the bias-corrected modelled stratospheric  $\text{NO}_2$  columns (b, d) are depicted at 04:45 UTC (13:45 KST) on  
280 example days in December and June, respectively. Here, the bias-corrected modelled stratospheric  $\text{NO}_2$  columns are calculated by subtracting the model bias correction terms obtained through parameterization (Fig. 5) from the modelled stratospheric  $\text{NO}_2$  columns. Therefore, the bias-corrected model stratospheric  $\text{NO}_2$  columns (Fig. 6b and 6d) used in the stratosphere-troposphere separation in the GEMS  $\text{NO}_2$  retrieval algorithm are smaller compared to the original modelled stratospheric columns (Fig. 6a and 6c). Seasonal variability is also evident depending on stratospheric chemistry, with the stratospheric  $\text{NO}_2$  column lower in  
285 winter than in summer at the same scan time.

The stratospheric  $\text{NO}_2$  column, derived from the CAMS forecast stratospheric model profile as outlined above, exhibits a pronounced diurnal variation (Fig. 7). After sunrise, there is a decrease in the stratospheric  $\text{NO}_2$  column due to the process of  $\text{NO}_2$  photolysis into  $\text{NO}$ , followed by a quasi-linear increase as sunset approaches (Dirksen et al., 2011). Also, a meridional gradient of stratospheric  $\text{NO}_2$  is well described depending on the solar zenith angle. While stratospheric fields estimated from  
290 the CAMS forecast model approach show an overall similar range and spatial distribution of  $\text{NO}_2$  columns with those from STREAM (Fig. 2), this method notably captures small-scale stratospheric variations. Given that the stratosphere-troposphere separation method utilizing the CAMS forecast model profile effectively describes the small-scale variations of stratospheric  $\text{NO}_2$  over time, which is required for GEMS observations with high spatial and temporal resolution, this approach is selected

as the baseline in the DLR GEMS NO<sub>2</sub> retrieval algorithm. It is important to note that CAMS will be the baseline for the  
295 Sentinel-4 NO<sub>2</sub> retrieval algorithm.



300 **Figure 3:** Maps of the (a) observed initial total NO<sub>2</sub> columns from GEMS, (b) simulated initial total NO<sub>2</sub> columns derived from the CAMS forecast model profile, (c) differences between the model simulated and satellite observed initial columns (b-a in this figure), and (d) weighting factors indicating dominant stratospheric contributions for 10 December 2022 at 04:45 UTC. If the tropospheric NO<sub>2</sub> contribution is significant, the weighting factor (d) is assigned close to 0, and the corresponding pixel is excluded from the sample data for calculating stratospheric model biases.



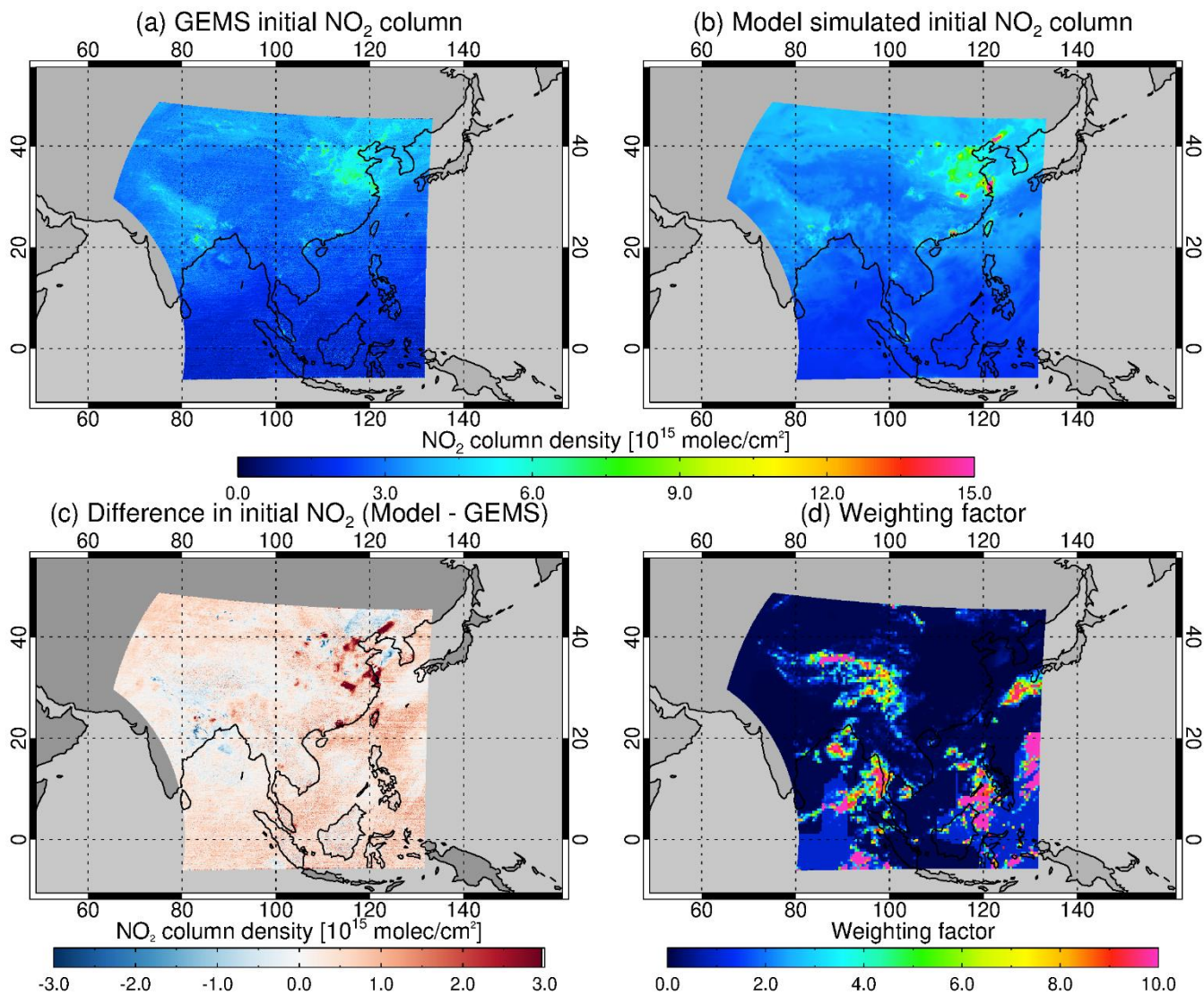
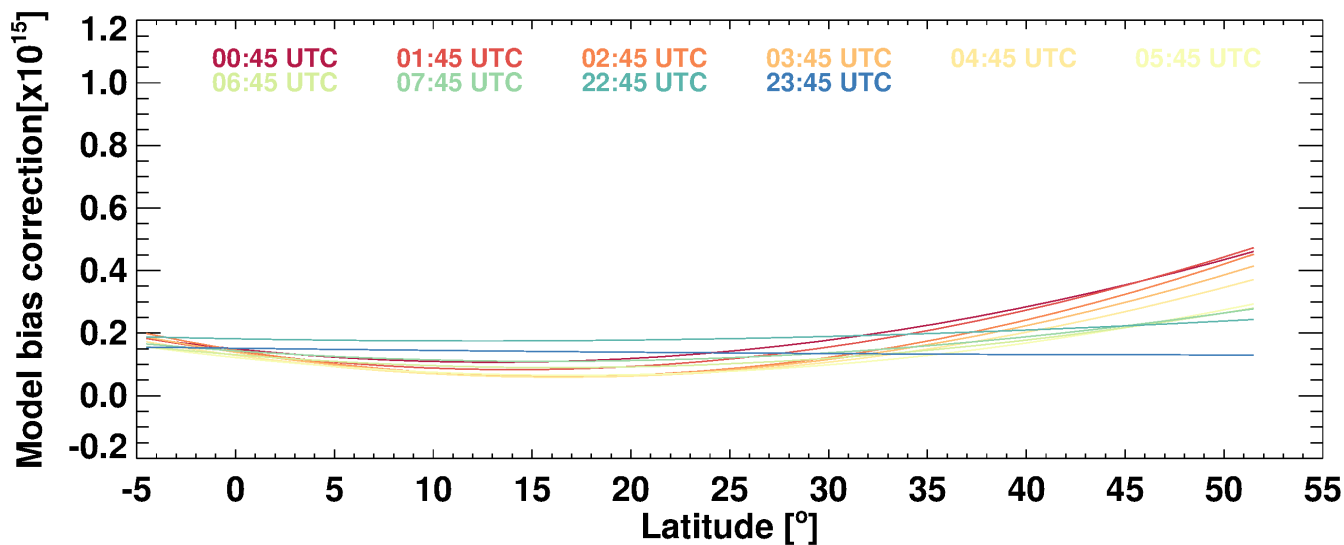
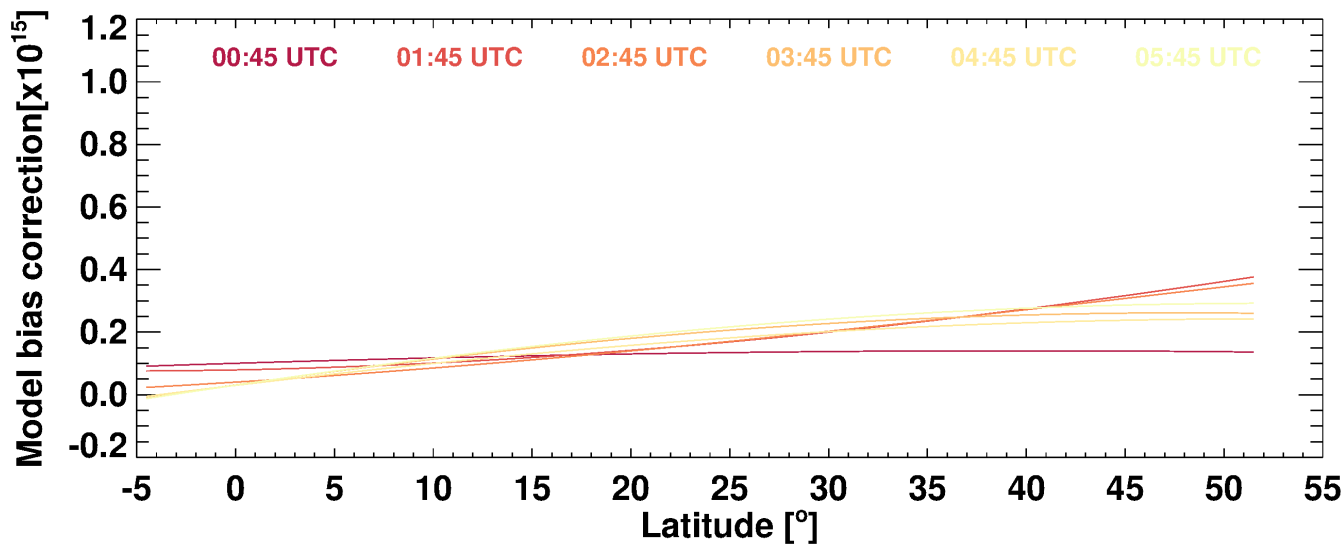
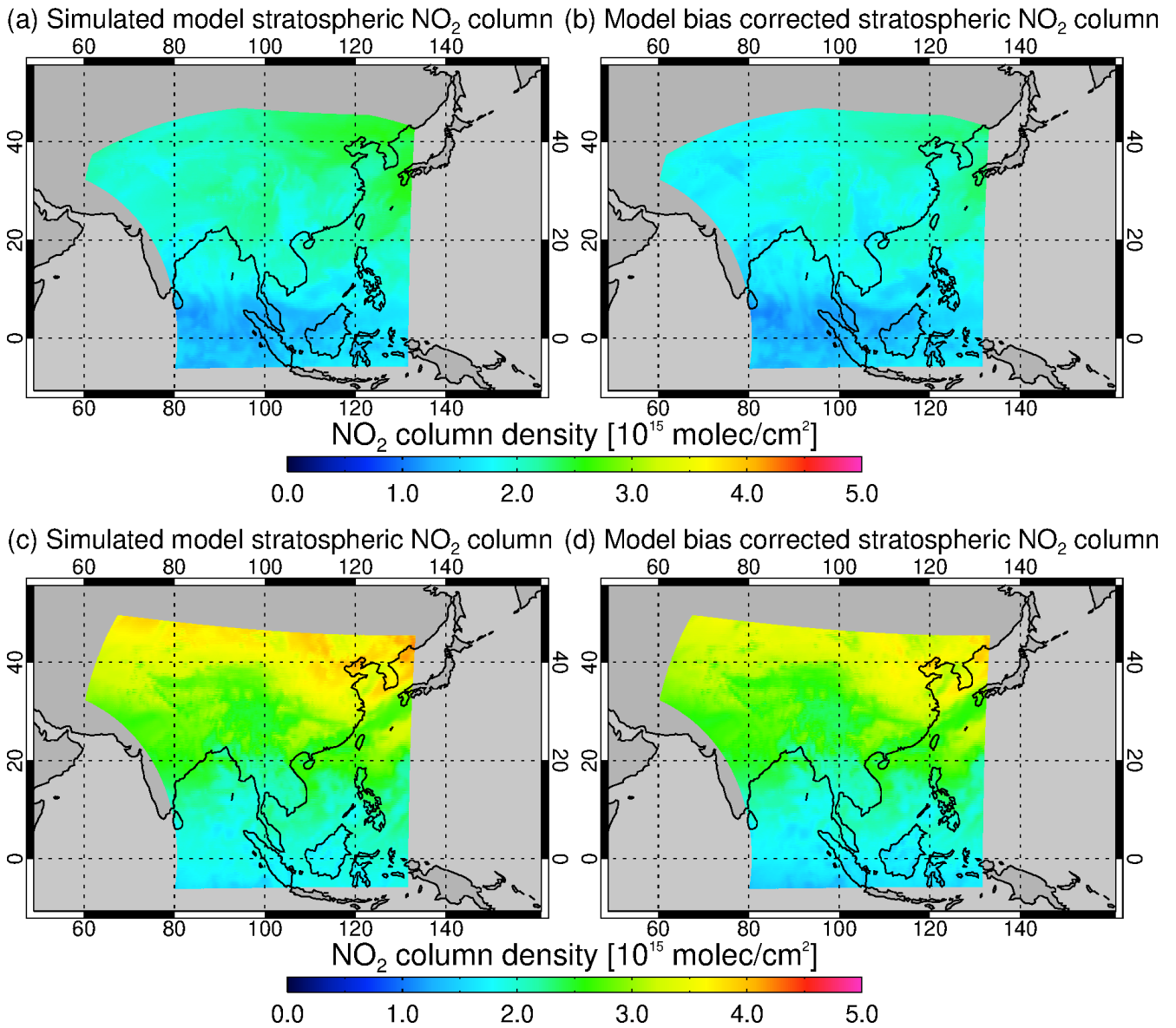


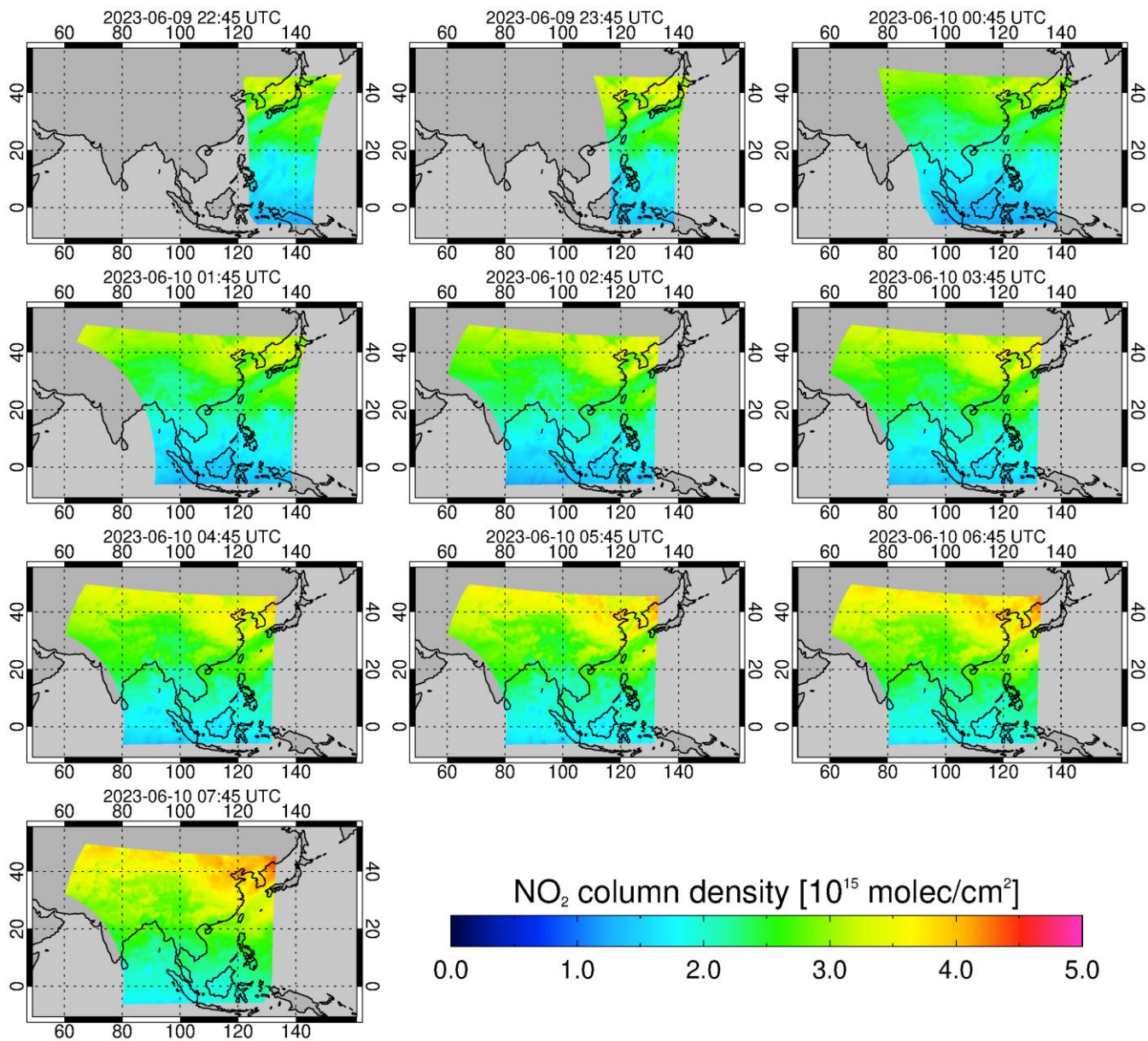
Figure 4: Same as Fig. 3, but for 10 June 2023 at 04:45 UTC.



310 Figure 5: Model bias correction terms parameterized as a function of latitude for each scan time on 10 December 2022 (top) and 10 June 2023 (bottom), respectively.



**Figure 6: Simulated model stratospheric NO<sub>2</sub> vertical columns by CAMS forecast (a, c) and the bias-corrected modelled stratospheric NO<sub>2</sub> vertical columns (b, d) on 10 December 2022 (a, b) and 10 June 2023 (c, d).**



**Figure 7: Diurnal variation of estimated stratospheric NO<sub>2</sub> columns based on the approach utilizing the CAMS forecast model profile data (described in Sect. 2.2.2) on 10 June 2023.**



## 2.3 Air mass factor calculation

The conversion of the slant column into the vertical column is performed by dividing an AMF ( $M$ ). Given the small optical depth of  $\text{NO}_2$ , AMF can be derived as

$$M = \frac{\sum_l m_l(i)v_l c_l}{\sum_l v_l} \quad (3)$$

where  $m_l$  denotes the box-AMFs in layer  $l$ ,  $v_l$  is the partial column density, and  $c_l$  is the correction term for the temperature dependency of the  $\text{NO}_2$  cross section (Boersma et al., 2004; Bucselo et al., 2013).  $m_l$  depends on retrieval (forward model) input parameters  $i$ , including the GEMS viewing geometry, surface albedo, surface pressure, cloud fraction and cloud pressure. The box-AMF  $m_l$  values are calculated at 452.5 nm, the mid-point wavelength of the spectral fitting window 425-480 nm, using the radiative transfer model VLIDORT version 2.7 (Spurr, 2006). The box-AMFs are stored in a look-up table (LUT) as a function of solar zenith angle, viewing zenith angle, relative azimuth angle, surface albedo, surface pressure, and atmospheric pressure. Pixel-specific box AMFs are obtained by using the best estimates for forward model input parameters and a 6D linear interpolation. The light path in the troposphere is affected by scattering on air molecules as well as cloud and aerosol particles. Therefore, the tropospheric AMF calculation should consider the surface albedo, a priori  $\text{NO}_2$  profiles, and cloud properties. The impacts of main parameters on the AMF will be discussed in detail in the following sections.

### 2.3.1 Cloud correction

The retrieval of tropospheric  $\text{NO}_2$  is influenced by the cloud parameters, which derive variations in scene albedo and the photon path redistribution in the troposphere. In the presence of clouds, to account for cloud-contaminated pixels, the AMF calculation adopts the independent pixel approximation, which expresses the AMF as a linear combination of a cloudy AMF ( $M_{cld}$ ) and a clear-sky AMF ( $M_{clr}$ ) (Cahalan et al., 1994; Martin et al., 2002):

$$M = \omega M_{cld} + (1 - \omega) M_{clr} \quad (4)$$

with  $\omega$  the radiance weighted cloud fraction derived from the effective cloud fraction ( $c_f$ ):

$$\omega = \frac{c_f I_{cld}}{(1 - c_f) I_{clr} + c_f I_{cld}} \quad (5)$$

where  $I_{cld}$  and  $I_{clr}$  represent the radiances from the cloudy and clear parts of the pixel, respectively. The values of  $I_{cld}$  and  $I_{clr}$  depend on GEMS viewing geometries, surface albedo and assumed cloud albedo.

#### 2.3.1.1 GEMS L2 cloud fraction and cloud pressure

The operational GEMS cloud algorithm retrieves the effective cloud fraction and cloud centroid pressure based on a LUT that utilizes the  $\text{O}_2\text{-O}_2$  absorption band similar to the OMI cloud retrieval algorithm (Kim et al., 2024). This cloud model assumes an optically thick Lambertian cloud with a fixed albedo of 0.8. In the first step, the absorption cross-section spectrum of  $\text{O}_2\text{-O}_2$  is fitted in the 460-485 nm range based on the DOAS method yielding the slant column density of  $\text{O}_2\text{-O}_2$   $S_{\text{O}_2\text{-O}_2}$  together

with the continuum reflectance  $R_c$ . The  $O_3$  cross-section spectrum is included in the spectral fit as it overlaps with the  $O_2$ - $O_2$  spectrum. In the next step, LUT is used to convert the retrieved quantities  $S_{O_2-O_2}$  and  $R_c$  into cloud altitude and effective cloud fraction. The altitude is transformed into the pressure level with the profile used by the forward model calculations. A detailed description of the GEMS operational cloud algorithm can be found in Kim et al. (2024). The GEMS L2 cloud product parameters, specifically the effective cloud fraction and cloud centroid pressure, retrieved by the processor version 2.0 are used and evaluated for the impacts of cloud correction on GEMS  $NO_2$  retrieval.

### 355 2.3.1.2 OCRA cloud fraction adapted to GEMS

Optical Cloud Recognition Algorithm (OCRA) is the algorithm that provides operational radiometric cloud fraction information for the European satellite missions dedicated to air quality and trace gas monitoring, including GOME/ERS-2, SCIAMACHY/Envisat, GOME-2/MetOp-ABC and TROPOMI/S5P (Loyola 1998; Lutz et al., 2016; Loyola et al., 2018) as well as the NASA EPIC/DSCOV. OCRA will also be applied to the operational L2 cloud product of the upcoming Sentinel-4 mission (Loyola et al., 2018). OCRA retrieves the cloud fraction by analysing the colour of the scene using integrated radiances in UV-vis ranges, separating the sensor measurements into two components: cloud-free background and a remainder expressing the influence of clouds. Given its flexibility and versatile design, OCRA can be easily adapted and implemented to other missions and instruments. Here, we apply the OCRA GEMS cloud fraction, which is retrieved by adapting the OCRA algorithm directly to the GEMS level 1 radiance and irradiance data, as a complement of the operational GEMS cloud fraction. The adaptation of OCRA to the GEMS L1 data includes the following components. For the clear-sky background, we use composite maps generated with the EPIC/DSCOV instrument. See Molina Garcia (2022) for details about the generation of those maps. OCRA also includes a pre-processing step which intends to minimize cloud fraction overestimation at extreme viewing geometries. An empirical correction scheme for the GEMS L1 reflectance windows used by OCRA is computed based on four full months of GEMS L1 data to cover all the seasons. The correction for each OCRA fitting window is then based on a polynomial fit to monthly mean reflectance data as a function of the viewing zenith angle. The final calculation of the OCRA GEMS radiometric cloud fraction is then performed based on the viewing angle dependency corrected reflectance. Sensitivity tests of GEMS tropospheric  $NO_2$  vertical column retrieval depending on different cloud fractions of each product will be described in the following section 2.3.1.3.

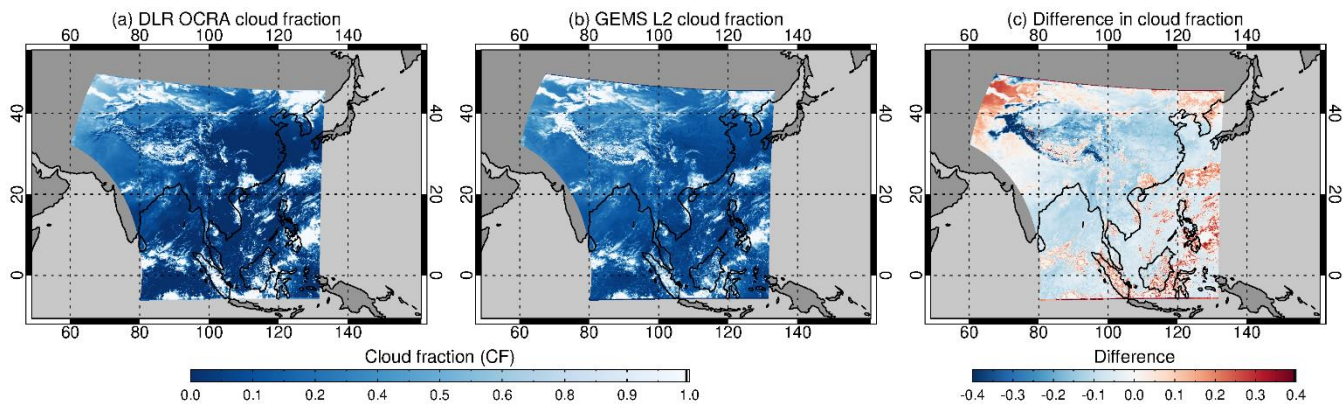
### 375 2.3.1.3 Evaluation of cloud corrections

In this section, we evaluate the influence of cloud correction on the tropospheric  $NO_2$  column retrieval using two different cloud fraction datasets described in Sect. 2.3.1.1 and 2.3.1.2. Figure 8 compares the cloud fraction from the OCRA applied to GEMS L1 data and the GEMS L2 cloud v2.0 product for the same scan time on the same day. Overall, there is good agreement in both the cloud structures and value ranges between the two datasets. The correlation between the GEMS L2 effective cloud fraction and the OCRA cloud fraction is approximately 0.97. However, there are clear spatial patterns that the OCRA cloud fraction is smaller by about 0.1 for clear-sky scenes, whereas larger for fully cloudy scenes compared to the GEMS L2 cloud

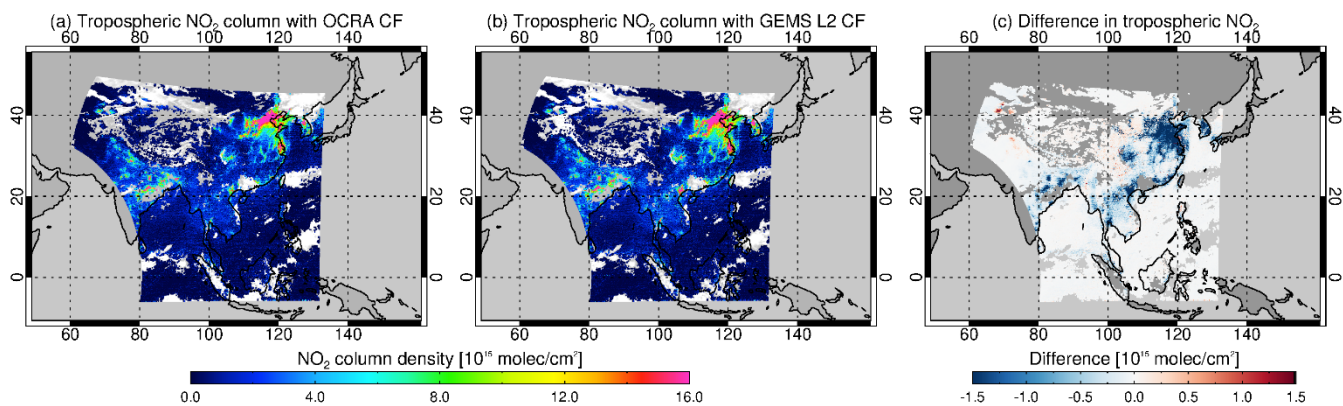
fraction as identified in the difference map (Fig. 8c). The high bias in the GEMS v2.0 cloud fraction compared to the OCRA cloud fraction for clear-sky scenes might be attributed to the different treatments of surface albedo in cloud retrievals. The GEMS v2.0 cloud retrieval algorithm uses monthly surface reflectance from OMI as input (Kim et al., 2024), whereas OCRA uses a clear-sky climatology based on the EPIC/DSCOVER instrument. We found that surface features from OMI-based surface LER climatology, particularly for bright surfaces, get translated into the operational GEMS v2.0 cloud fraction products as shown in Fig. S1. Also, regions with extreme observation geometries, i.e. with large solar zenith angle and viewing zenith angle, differences between the OCRA and GEMS cloud fraction is detected. At zenith angles roughly above 60°, the GEMS cloud fraction shows a constant background signal which is less pronounced in the OCRA cloud fraction due to the application of viewing zenith angle correction.

Figure 9 shows the tropospheric NO<sub>2</sub> columns retrieved using both the OCRA and GEMS L2 cloud fraction for the same scan time, demonstrating the impact of cloud corrections with different cloud products. In many cases of cloudy scenes, the cloud top is generally above the NO<sub>2</sub> pollution present in the boundary layer, and the enhanced tropospheric NO<sub>2</sub> columns cannot be detected by satellite instruments if the clouds are optically thick. Therefore, tropospheric NO<sub>2</sub> columns are displayed for GEMS observations with the cloud fraction less than 0.4. It should be noted that the altitude-dependent AMF for a partly cloudy pixel implicitly includes a correction for the NO<sub>2</sub> columns lying below the cloud, referred to as ghost columns, via the cloudy-sky AMF  $M_{clid}$  (where  $m_l = 0$  for layers below the cloud top pressure). As indicated in the difference map (Fig. 9c), the use of OCRA cloud fraction results in a reduction in tropospheric NO<sub>2</sub> columns, particularly in polluted regions, by up to  $2.0 \times 10^{15}$  molec cm<sup>-2</sup>. To examine the case in more detail, we zoomed in and displayed the cloud fraction and tropospheric NO<sub>2</sub> columns, including TROPOMI products that overpassed the study domain within one hour of the GEMS scan (Fig. 10). The cross-comparison of cloud fractions using the TROPOMI operational product revealed that OCRA cloud fraction values are closer to TROPOMI cloud fraction in clear-sky scenes, showing better agreement compared to GEMS L2 cloud fraction. Although the GEMS L2 cloud fraction shows small values around 0.1, these scenes seem to be identified as cloud-free (i.e. cloud fraction is set to 0) for almost clear-sky conditions with the retrieved cloud height very close to the surface height in both the OCRA and TROPOMI cloud products.

Figure 11 shows an example of the box-AMFs derived using the OCRA and GEMS L2 cloud fraction for clear-sky scenes over Shanghai (32.22 °N, 121.37 °E) and Qingdao (35.05 °N, 119.57 °E) in eastern China on March 14, 2023. The cloud fractions and the calculated tropospheric AMFs are also indicated. Compared to the cloud correction using the GEMS operational cloud fraction, employing OCRA cloud correction increases the tropospheric AMF by ~28 %, while concurrently reducing the tropospheric NO<sub>2</sub> column by ~22 %. Notably, under clear-sky conditions, the GEMS L2 cloud fraction of 0.1 makes the retrieval less sensitive to NO<sub>2</sub> below the cloud than the OCRA-based cloud correction, where the cloud fraction is at or close to 0. This effect is particularly pronounced in polluted urban areas where elevated levels of NO<sub>2</sub> are located in the boundary layer, resulting in larger differences in retrieved tropospheric NO<sub>2</sub> columns due to cloud corrections with different cloud fraction values.



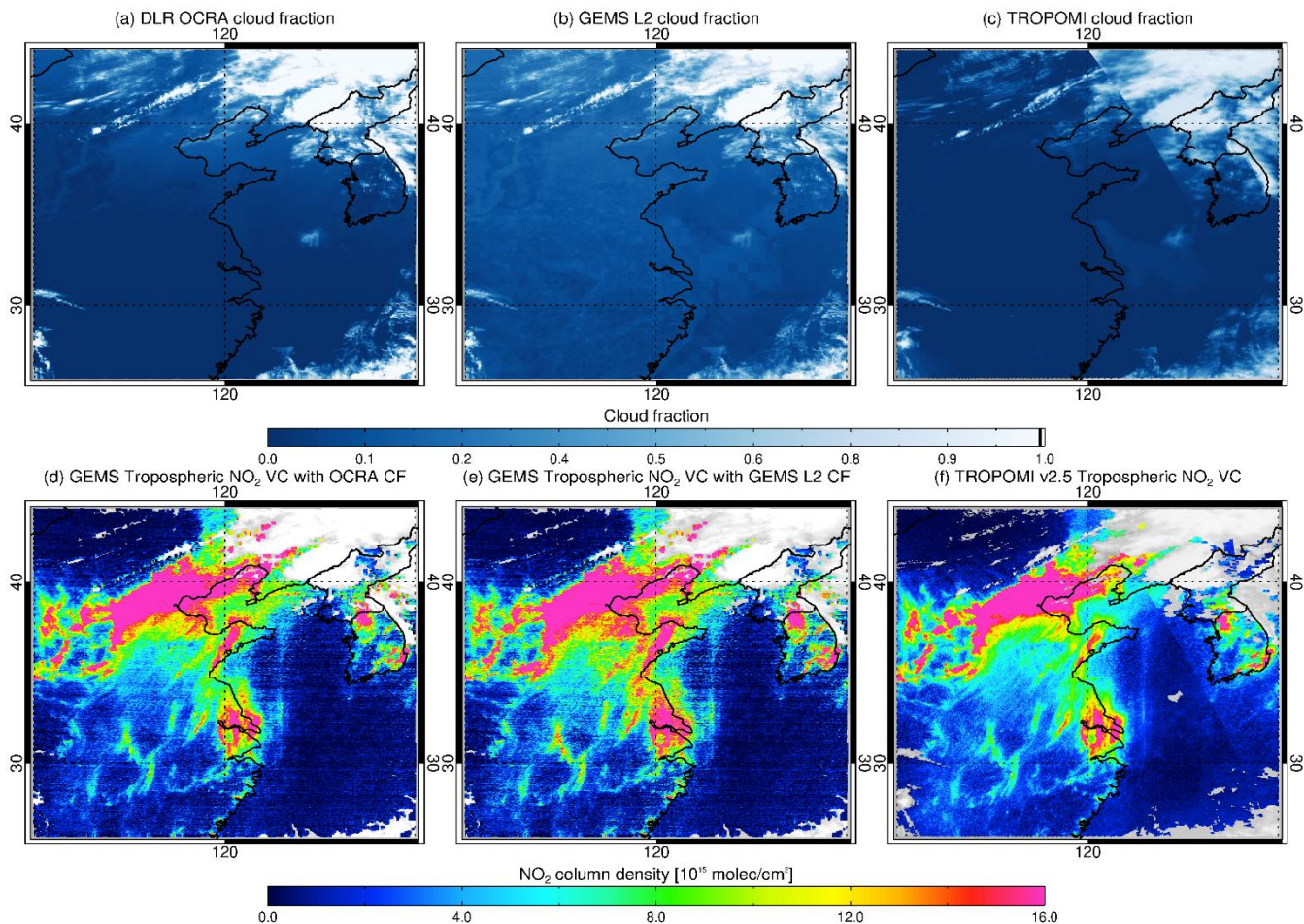
**Figure 8: Maps of cloud fractions from (a) OCRA adapted to GEMS level 1 data, and (b) GEMS L2 v2.0 cloud product for 14 March 2023 at 04:45 UTC. (c) Differences in cloud fractions (OCRA – GEMS L2 v2.0; a – b in this figure) for the corresponding scene.**



**Figure 9: Tropospheric NO<sub>2</sub> columns retrieved using (a) OCRA cloud fractions (displayed in Fig. 8a), and (b) GEMS L2 v2.0 cloud fractions (displayed in Fig. 8b) for 14 March 2023 at 04:45 UTC. (c) Differences in tropospheric NO<sub>2</sub> columns applying the OCRA-based cloud corrections and GEMS L2 O<sub>2</sub>-O<sub>2</sub> based cloud corrections (a – b in this figure). Only measurements with cloud fraction  $\leq 0.4$  are included.**

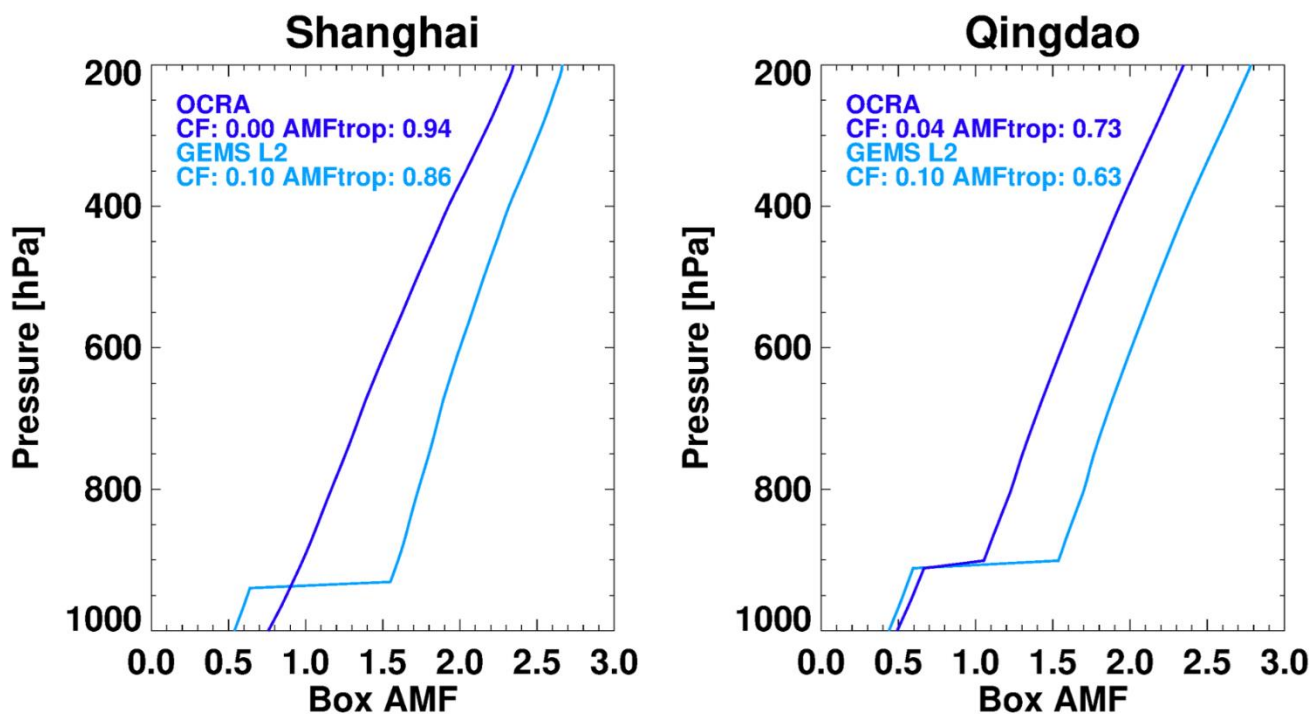
420

425



430 **Figure 10: Zoomed maps for cloud fractions from (a) OCRA adapted to GEMS level 1 data, (b) GEMS L2 v2.0 cloud product, and (c) TROPOMI L2 v2.4 cloud product over polluted areas including eastern China and Korea peninsula for 14 March 2023 at 04:45 UTC. GEMS tropospheric NO<sub>2</sub> vertical columns retrieved using (d) OCRA cloud fractions (displayed in Fig. 10a) and (e) GEMS L2 v2.0 cloud fractions (displayed in Fig. 10b). (f) TROPOMI L2 v2.5 tropospheric NO<sub>2</sub> columns for the corresponding scene.**





435 **Figure 11:** Comparisons of box-AMFs derived using the OCRA and GEMS L2 cloud fraction for clear-sky scenes over Shanghai (32.22 °N, 121.37 °E) and Qingdao (35.05 °N, 119.57 °E) in eastern China on 14 March 2023 at 04:45 UTC. Cloud fractions and calculated tropospheric AMFs for each case are denoted.

### 2.3.2 Surface albedo

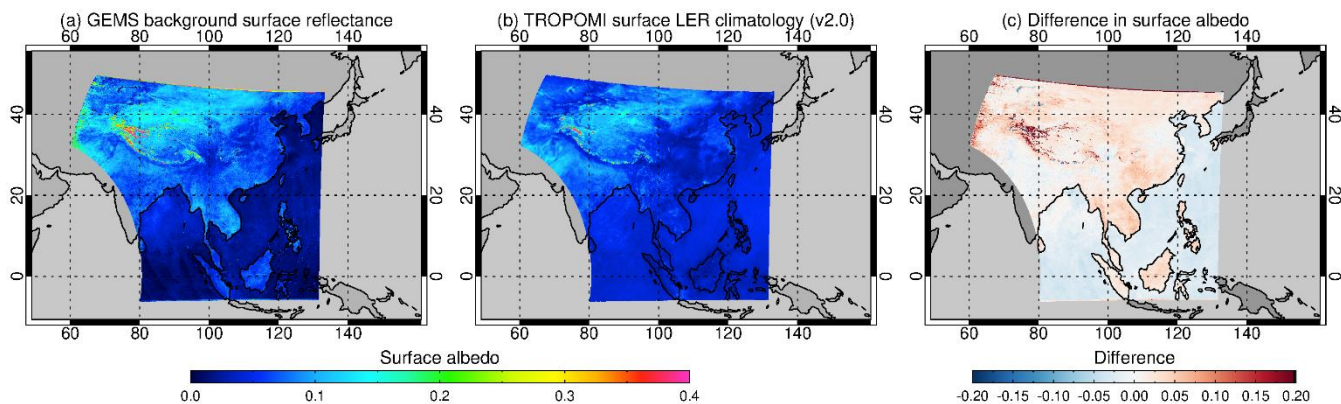
Surface albedo plays an important role in the accurate retrieval of trace gas columns and cloud properties (Govaerts et al., 2004). Previous studies accessing the accuracy of NO<sub>2</sub> columns from satellite measurements show that errors in NO<sub>2</sub> retrievals, particularly over major continental source regions, are dominantly affected by errors in the air mass factors caused by imprecise estimates of the surface reflectance (Boersma et al., 2004; Kleiopl et al., 2008). Given the significant impact of surface albedo on the sensitivity of backscattered radiance to boundary layer NO<sub>2</sub>, even a minor absolute error of 0.01 in surface reflectance can potentially introduce approximately a 15 % error in tropospheric NO<sub>2</sub> columns in polluted regions (Boersma et al., 2004). In many retrieval algorithms for trace gases from space-borne spectrometers, the surface reflectivity is described as Lambertian-equivalent reflectivity (LER), assuming isotropic surface reflection. While this simplified approach may be justified when viewing and solar illumination angles are constrained to a narrow range, it disregards the directional dependence of surface reflectivity, which can be described by a bidirectional reflectance distribution function (BRDF) (Tilstra et al., 2017). Radiative transfer models are able to include the BRDF for every order of reflection by the model surface to account for the dependence of surface reflectivity on illumination and observation direction. However, implementing the full BRDF is

450 computationally intensive in many practical situations, and certain radiative transfer codes may lack proper BRDF handling capabilities. Given these challenges, most operational satellite-based trace gas retrieval algorithms have used LER climatology databases, typically constructed on a gridded monthly basis using statistical values derived from multiple years of satellite observations. Recently, to complement the traditional LER climatology, several new databases which contain a directional dependence of the albedo values have developed, such as the geometry-dependent effective Lambertian-equivalent reflectivity (GE\_LER) (Loyola et al., 2020), the directionally dependent Lambertian-equivalent reflectivity (DLER) (Tilstra et al., 2023). 455 The effect on the angular dependence of surface reflectivity should be considered more carefully for the geostationary satellite due to its hourly sampling, relatively large viewing and solar zenith angles, and high spatial resolution (Govaerts et al. 2004). To address the atmospheric scattering effects and the anisotropy of the surface reflectance throughout the day, the GEMS operational surface reflectance algorithm operates in two modes, online and offline, consisting of three main steps: (1) 460 atmospheric correction, (2) bi-directional reflectance distribution function (BRDF) modelling, and (3) background surface reflectance (BSR) retrieval. The atmospheric correction process involves computing the top-of-atmosphere (TOA) radiance and converting it to top-of-canopy (TOC) reflectance using the Second Simulation of the Satellite Signal in the Solar Spectrum Vector (6SV) radiative transfer model (Vermote et al., 2006). Next, the Roujean BRDF model (Roujean et al., 1992), one of the semi-empirical BRDF models, is employed for BRDF modelling to characterize the anisotropic properties of land surfaces. 465 Finally, the GEMS BSR is derived using the BRDF parameters obtained from the land surface area on the preceding day. In the marine area, where the same assumptions as those for land do not apply, the minimum of Rayleigh-corrected reflectance within a 15 days period is utilized. The BRDF retrieval is performed offline and is applied in the online BSR retrieval. A detailed description of the GEMS BSR algorithm is provided by Sim et al. (2024).

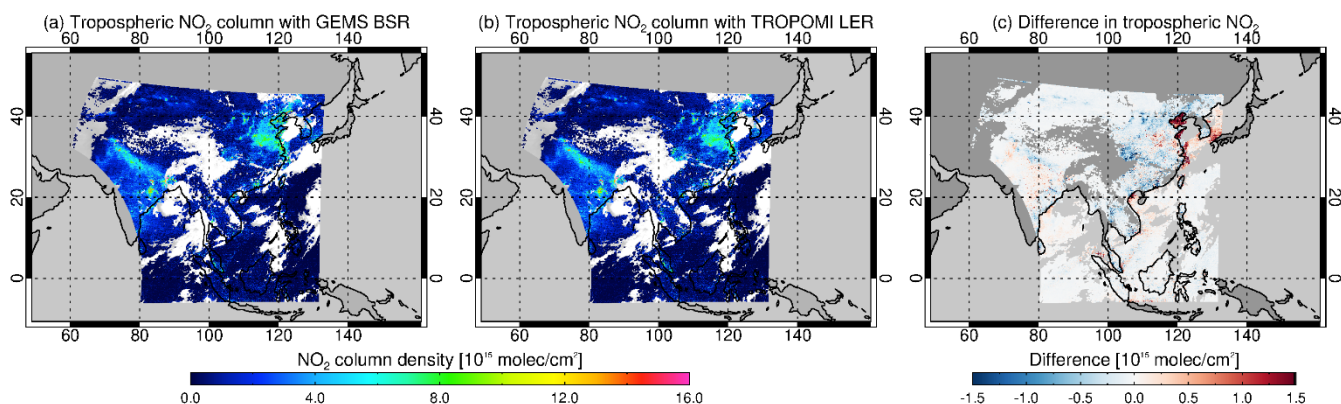
Currently, the GEMS BSR v2.0 product is used as input data for GEMS operational aerosol, cloud, and trace gas retrievals. In 470 this study, we compare the GEMS BSR with the TROPOMI LER climatology v2.0 interpolated linearly in time and distance from the GEMS pixel, and evaluate the impact of surface reflectivity on GEMS tropospheric NO<sub>2</sub> retrievals. Figure 12 and 14 show the GEMS BSR at 448 nm, TROPOMI surface LER at 463 nm, and their differences at 04:45 UTC on 9 December 2022 and 10 June 2023, respectively. Overall, the GEMS BSR value is higher than the TROPOMI LER value over land by about 0.1, while it is lower by about 0.05 over the sea. GEMS BSR shows larger differences in surface albedo between the land and 475 ocean, with a distinct boundary along the coastline compared to TROPOMI surface LER. In summer, the spatial pattern remains generally consistent, with GEMS BSR showing higher values over land and lower values over water. However, in winter, the spatial pattern of differences between the two databases is relatively inconsistent and varies depending on the region and observation period. This inconsistency may be attributed that TROPOMI LER climatology may differ from the actual surface conditions, especially in snow/ice scenes. Additionally, systematic biases in GEMS BSR are more pronounced in 480 winter due to gap-filling close to 0 in cases where no data are available, particularly under high viewing zenith angles and solar zenith angle conditions, such as in Mongolia, northern Tibet and Xinjiang.

The difference in tropospheric NO<sub>2</sub> columns depending on surface albedo products is larger in winter ( $2.5 \times 10^{14}$  molec cm<sup>-2</sup> on average) compared to summer ( $1.5 \times 10^{14}$  molec cm<sup>-2</sup> on average) (Fig. 13 and 15). Moreover, the larger impact of surface

albedo is observed over polluted regions, such as in eastern China and northern India. Since the surface BRDF increases with larger zenith angles toward the northwest of the GEMS domain, the differences in surface albedo and retrieved tropospheric NO<sub>2</sub> columns may increase accordingly. However, the northwestern part of the domain, including Mongolia, Xinjiang and Tibet, predominantly consists of clean background regions, which results in relatively small differences in tropospheric NO<sub>2</sub> column values themselves. In this study, we use the GEMS BSR v2.0, which is provided for each scan hour on a daily basis, in the DLR GEMS NO<sub>2</sub> retrieval algorithm to account for BRDF effects. However, current remaining issues in GEMS BSR v2.0 such as land-sea discontinuity and uncertainties in TOA reflectance attributed to GEMS level 1 spectra might cause errors in GEMS AMF calculation. These issues will be resolved using the improved GEMS BSR v3.0 product which will be released near future.

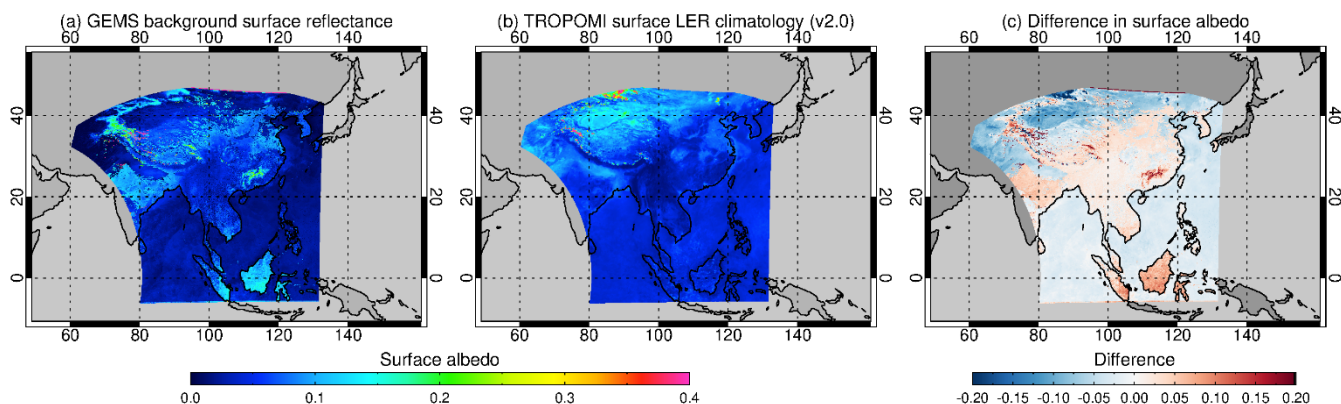


495 **Figure 12: Maps of surface albedo from (a) GEMS BSR v2.0 product, and (b) TROPOMI surface LER climatology v2.0 product spatiotemporally matched on GEMS pixels for 10 June 2023 at 04:45 UTC. (c) Differences in surface albedo (GEMS BSR v2.0 – TROPOMI surface LER climatology v2.0; a – b in this figure) for the corresponding scene.**



500 **Figure 13: Tropospheric NO<sub>2</sub> columns retrieved using (a) GEMS BSR v2.0 product (displayed in Fig. 12a), and (b) TROPOMI surface LER climatology v2.0 (displayed in Fig. 12b) for 10 June 2023 at 04:45 UTC. (c) Differences in tropospheric NO<sub>2</sub> columns applying the GEMS BSR v2.0 and TROPOMI surface LER climatology v2.0 (a – b in this figure). Only measurements with cloud fraction  $\leq 0.4$  are included.**





505

Figure 14: Same as Fig. 12, but for 9 December 2022 at 04:45 UTC.

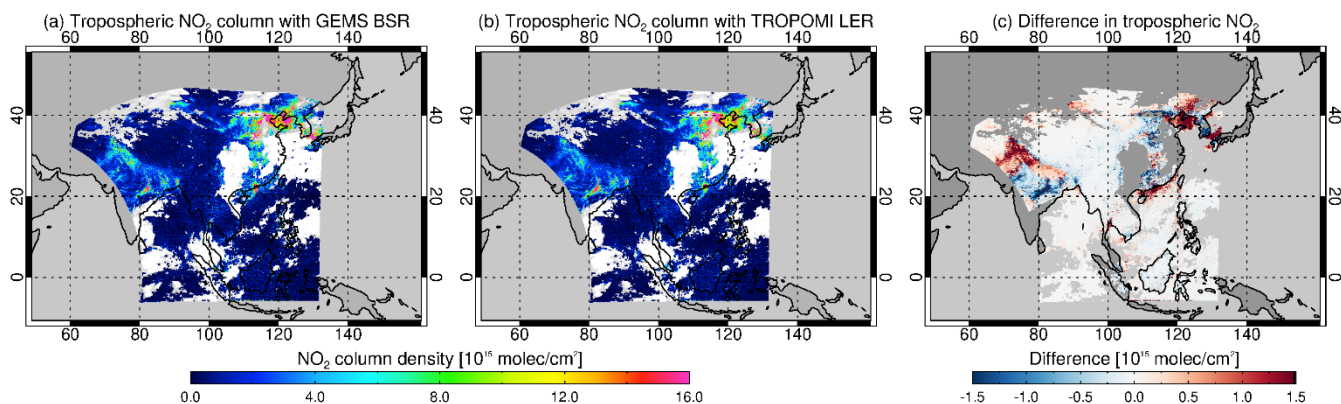


Figure 15: Same as Fig. 13, but for 9 December 2022 at 04:45 UTC.

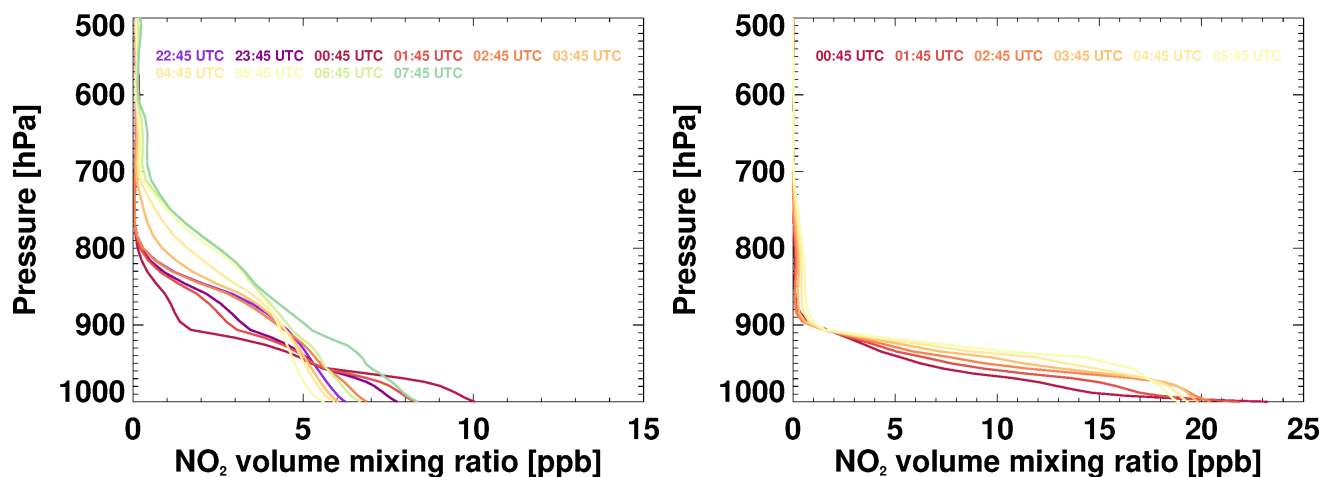
510

### 2.3.3 A priori NO<sub>2</sub> profile

To account for the varying sensitivity of NO<sub>2</sub> at different altitudes, a vertical profile shape of NO<sub>2</sub> should be considered in the AMF calculation. The chemistry transport model is regarded as the optimal source for an a priori NO<sub>2</sub> profile. In this study, the CAMS forecast model from cycle 48r1, used in the stratosphere-troposphere separation, is also applied in the tropospheric AMF calculation, which is beneficial to maintain consistency in the GEMS NO<sub>2</sub> retrieval. The a priori profile values are computed at the center of GEMS ground pixel through linear interpolation based on distances to neighbouring CAMS forecast grid centers. Additionally, the model profile values are linearly interpolated with respect to the satellite observation time. Compared to the TM5-MP a priori profile with a 1° x 1° spatial resolution used in TROPOMI NO<sub>2</sub> retrieval, the improved spatial resolution as well as more up-to-date chemistry and emissions for trace gas species in the CAMS forecast model enhance

520 the capability to capture local NO<sub>2</sub> distributions, especially in regions with large heterogeneity and variability (Eskes et al., 2024).

Figure 16 shows the diurnal variation in the CAMS forecast a priori NO<sub>2</sub> profiles over Seoul, South Korea (37.53° N, 120.01° E), for summer (15 June 2023) and winter (12 December 2022), respectively. Both selected days are weekdays. The CAMS forecast a priori profiles describe the diurnal evolution of the NO<sub>2</sub> volume mixing ratios. In the morning, typically commuting  
525 hours from 00:45 to 01:45 UTC (09:45 to 10:45 KST), source emissions increase with the elevated traffic, leading to the highest surface NO<sub>2</sub> concentration with a shallow boundary layer. As noon approaches, NO<sub>2</sub> concentrations decrease due to diminished source emissions (lower traffic flow) compared to the morning, as well as stronger vertical mixing facilitated by increased temperature and boundary layer heights. Also, the increased temperature and solar radiation intensity during midday enhance photochemical reactions, which consequently increase the chemical loss of NO<sub>2</sub> (An et al., 2016). Tropospheric NO<sub>2</sub>  
530 columns, which show a minimum during midday, begin to increase again with increased traffic volume near the end of work hours, from 06:45 to 07:45 UTC (15:45 to 16:45 KST), a pattern well described in the CAMS forecast a priori NO<sub>2</sub> profile. In addition to the diurnal variation, the vertical distribution of CAMS NO<sub>2</sub> varies according to the season. In winter, high NO<sub>2</sub> concentrations are distributed close to the surface level due to abundant NO<sub>x</sub> emissions from sources such as traffic and industry, trapped within a shallow boundary layer. On the other hand, in summer, the higher temperature and elevated boundary  
535 layer promote stronger convective activity and increased dilution, while stronger solar radiation facilitates the photolysis of NO<sub>x</sub>. One thing to note is that CAMS forecast NO<sub>2</sub> volume mixing ratios and vertical distributions may vary depending on various factors, including meteorological conditions (temperature, wind speed and direction, relative humidity, precipitation, and radiation) as well as emission patterns on weekdays versus weekends.



540

Figure 16: A priori NO<sub>2</sub> profiles from the CAMS forecast model for GEMS each scan hour over the Seoul metropolitan area (37.53° N, 120.01° E) on 15 June 2023 (left) and 12 December 2022 (right), respectively.

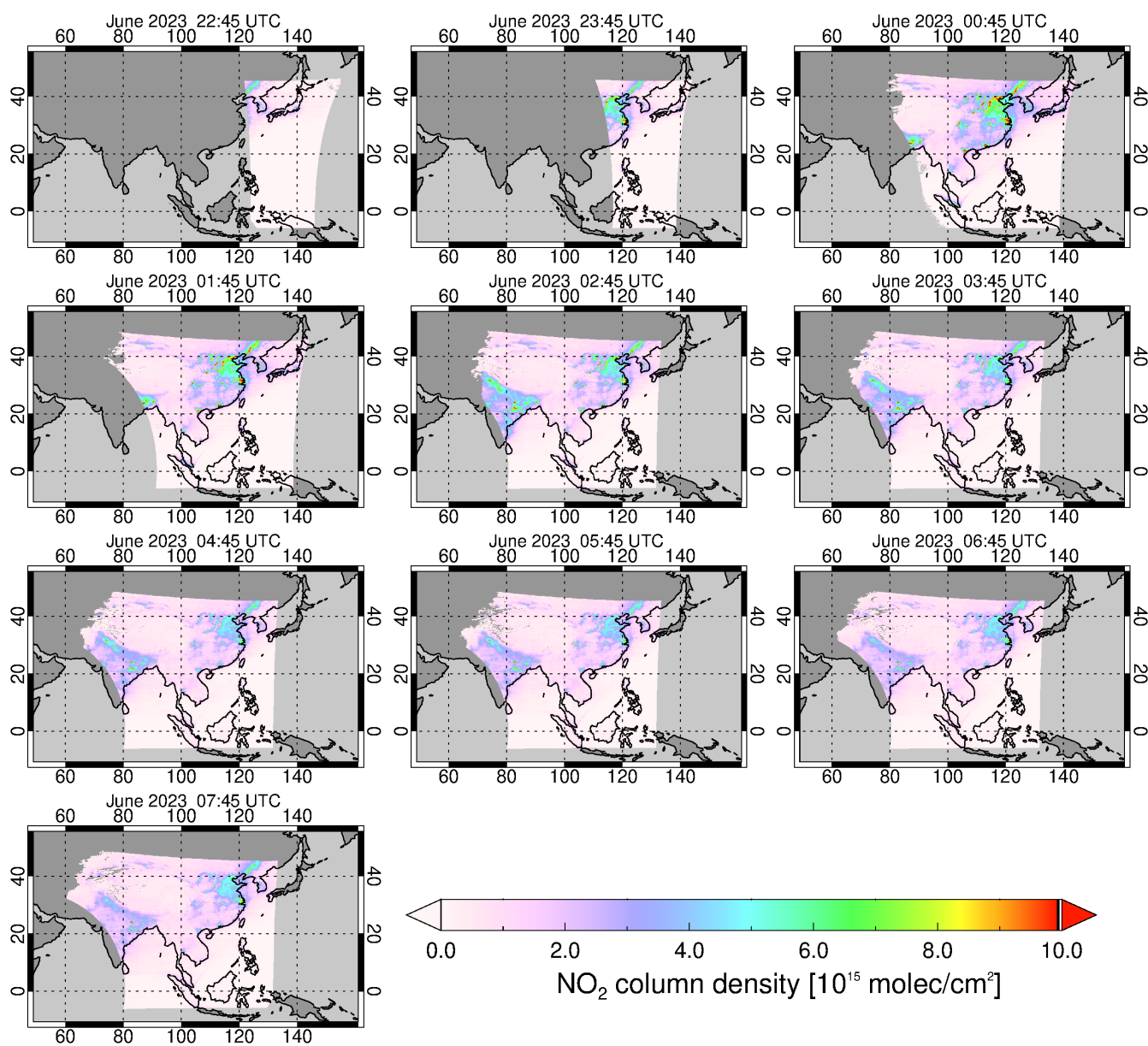
### 3. DLR GEMS tropospheric NO<sub>2</sub> retrieval evaluation

#### 545 3.1 Examples of GEMS tropospheric NO<sub>2</sub> columns

Figure 17 shows the monthly mean DLR GEMS tropospheric NO<sub>2</sub> vertical columns for each scan time from 22:45 to 07:45 UTC (07:45 to 16:45 KST) on a 0.1° x 0.1° grid in June 2023. Only measurements with cloud fractions less than 0.25 are included. High tropospheric NO<sub>2</sub> columns are evident over urban and industrial regions in eastern China, South Korea and northern India. Hotspot signals are also detected as city cluster scale, such as Beijing, Tianjin, Hebei, and Shanghai located in  
550 north-northeast China, Chongqing and Chengdu in southwest China, Shenzhen and Guangzhou in south China, and Seoul in South Korea, Tokyo and Osaka in Japan, Delhi and Kolkata in India. In these megacities and surrounding areas, characterized by high population density and anthropogenic sources including motor vehicles, power plants and industries, diurnal variations in tropospheric NO<sub>2</sub> are clearly monitored by the hourly geostationary satellite observations.

Due to its relatively short chemical lifetime with several hours in the boundary layer during daytime, the spatial and temporal  
555 variability of tropospheric NO<sub>2</sub> is strongly affected by its emissions from sources and meteorological factors such as wind speed, temperature, humidity and illumination (Beirle et al., 2003). The highest levels of tropospheric NO<sub>2</sub> are mainly observed in the morning, primarily due to abundant emissions of NO<sub>x</sub> from commuter traffic. In urban regions located to the east of the GEMS domain, such as Tokyo, Seoul and cities in eastern China, the highest tropospheric NO<sub>2</sub> columns are found between 23:45 and 01:45 UTC, corresponding to their local morning time, while in India located in the west of the GEMS domain,  
560 peak levels are observed between 02:45 and 03:45 UTC due to time zone differences. During ~~midday~~~~the noontime~~, given sufficient ~~solar radiation~~~~ultraviolet radiation~~, NO<sub>2</sub> is photolyzed to produce NO and oxygen atoms, and it is also oxidized by OH radicals, resulting in a decrease in tropospheric NO<sub>2</sub> levels. However, the tropospheric NO<sub>2</sub> level begins to increase again in the later afternoon (07:45 UTC in the eastern part of the GEMS domain), approaching commuting times due to increased traffic in cities. Overall, GEMS tropospheric NO<sub>2</sub> retrievals over urban regions exhibit the highest peak in the local morning  
565 hours, decreasing to a minimum value around noon, and then increasing again in the afternoon. This pattern is consistent with previous studies that monitored the diurnal variation of tropospheric NO<sub>2</sub> using ground-based measurements, demonstrating that the temporal variability of NO<sub>2</sub> driven by source emissions and photochemistry over a large coverage can be effectively monitored by the geostationary satellite instrument (Zhao et al., 2016; Li et al., 2021). Also, spatial gradients of NO<sub>2</sub> from city centers to surrounding areas are detected from GEMS observations. Tropospheric NO<sub>2</sub> columns, which are high within the  
570 megacities due to heavy anthropogenic pollution generated by emissions from a high number of vehicles and industries, decrease with distance as a result of the diminishing NO<sub>x</sub> sources and horizontal transport and smearing (Beirle et al., 2011). Tropospheric NO<sub>2</sub> columns are significantly low over rural and open ocean areas. Although elevated levels of tropospheric NO<sub>2</sub> are detected along ship tracks, such as those starting from Singapore, and coastlines near ports and industries, most ocean and rural regions exhibit background levels of tropospheric NO<sub>2</sub> due to low anthropogenic emissions. In these pristine areas,  
575 NO<sub>2</sub> sources are primarily from natural emissions, including production by lightning and microbiological processes in soils (Weng et al., 2020; Li et al., 2021). Hence, the diurnal variation of tropospheric NO<sub>2</sub> in rural areas differs from that in polluted

urban areas, with a gradual increase observed from morning to noon. This gradual increase is attributed to biogenic NO<sub>x</sub> emissions, which are affected by vegetation, temperature, moisture and radiation (Weng et al., 2020).



580

**Figure 17: Diurnal variations of the monthly averaged DLR GEMS tropospheric NO<sub>2</sub> columns at each scan hour on 0.1° × 0.1° grid in June 2023. Only measurements with cloud fractions ≤ 0.25 are used in the creation of monthly mean gridded data.**

### 3.2 Comparison with TROPOMI v2.4 NO<sub>2</sub> product

585 To evaluate the DLR GEMS tropospheric NO<sub>2</sub> columns, comparisons with independent TROPOMI v2.4 tropospheric NO<sub>2</sub>  
columns are performed. While GEMS observes the domain covering East and Southeast Asia on an hourly basis, ranging from  
6 observations in winter to 10 in summer per day, TROPOMI measures the area sequentially per orbit. TROPOMI  
measurements covering the eastern part of the GEMS FOV, including Japan, start at approximately 03:00 UTC, with the last  
measurements over the western part of the GEMS FOV, including India, occurring around 08:00 UTC. Therefore, to  
590 compensate for the different temporal compatibility between the two satellites, the GEMS data scanned within  $\pm 30$  minutes  
of the TROPOMI observation time is matched. Cloud screening is applied based on the cloud radiance fraction on both  
products, with a cloud radiance fraction  $< 0.5$ . These spatiotemporally matched DLR GEMS and TROPOMI NO<sub>2</sub> data are  
regridded at a resolution of  $0.1^\circ \times 0.1^\circ$  to create a comparable dataset. The daily gridded DLR GEMS and TROPOMI  
tropospheric NO<sub>2</sub> vertical columns are compared for June 14, 2023 and December 14, 2022, respectively (Fig. 18 and 19).  
595 Figure 20 displays scatter plots for tropospheric NO<sub>2</sub> vertical columns between the two datasets on these days.  
Overall, the DLR GEMS tropospheric NO<sub>2</sub> columns show good agreement with TROPOMI v2.4 tropospheric NO<sub>2</sub> columns  
with correlation coefficients of 0.87 and 0.96, and linear regression slopes of 1.01 and 1.20, respectively (Fig. 20). The datasets  
also agree well in terms of spatial distribution and value range of tropospheric NO<sub>2</sub>. However, systematic biases are evident  
as shown in the difference map (Fig. 18c and 19c). Notably, the GEMS tropospheric NO<sub>2</sub> columns tend to have lower values  
600 in the open ocean, particularly in the southern part of GEMS FOV, while exhibiting higher values with positive biases over  
land, especially in polluted regions or the easternmost and westernmost of the domain. This systematic spatial pattern is mainly  
consistent regardless of season. The observed systematic biases in tropospheric NO<sub>2</sub> columns between the DLR GEMS and  
TROPOMI are mainly attributed to differences in slant columns and tropospheric AMFs calculated using different input  
datasets.

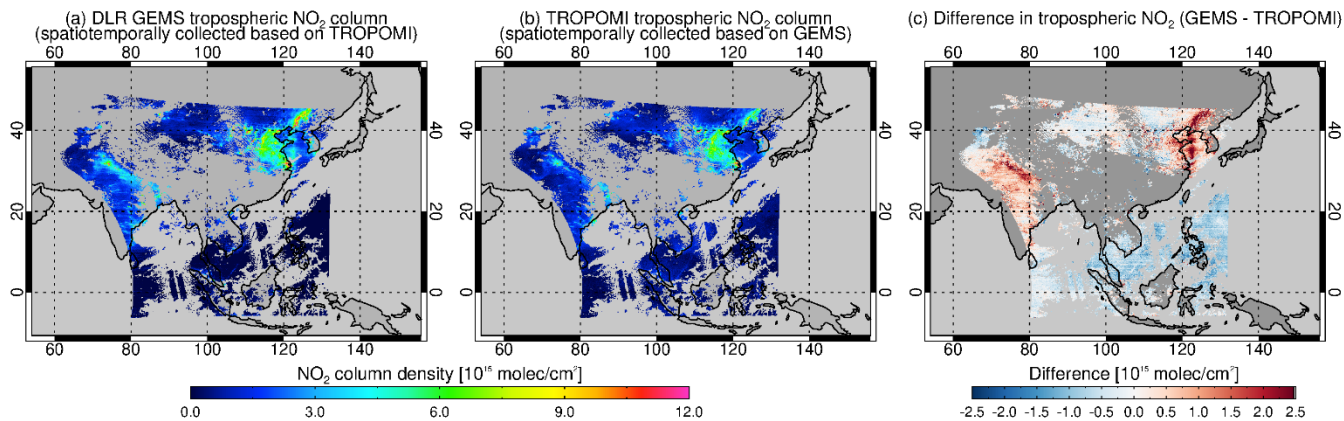
605 Considering the different viewing geometries between GEMS and TROPOMI, when comparing the initial NO<sub>2</sub> vertical  
columns scaled by the geometric AMFs to the slant columns, GEMS initial (geometric) vertical columns show a systematically  
larger gradient in the north-south direction than TROPOMI initial columns. Specifically, the GEMS initial columns indicate  
lower values with a negative bias in the southern GEMS FOV, while showing higher values with a positive bias toward the  
northern GEMS FOV compared to TROPOMI initial columns. This phenomenon is also noted in Zhang et al. (2023). The  
610 pronounced systematic gradient in the north-south direction in GEMS NO<sub>2</sub> slant column retrievals is primarily attributed to  
the GEMS L1 v1.2.4 spectra. We found systematic variations in the mean spectral fitting residuals along the swath from the  
north to south direction (not presented here), indicating a need for improvements in the GEMS level 1 data, including advanced  
radiometric calibration and residual correction. In the DLR GEMS tropospheric NO<sub>2</sub> retrieval, the systematic biases along the  
north-south direction are partially compensated by applying the model bias correction in the stratosphere-troposphere  
615 separation (refer to Fig. 5 in Sect. 2.2.2). It is expected that better consistency with NO<sub>2</sub> retrievals from TROPOMI will be

achieved once the remaining systematic biases initially originating from the NO<sub>2</sub> slant columns are resolved through the application of improved GEMS level 1 spectra.

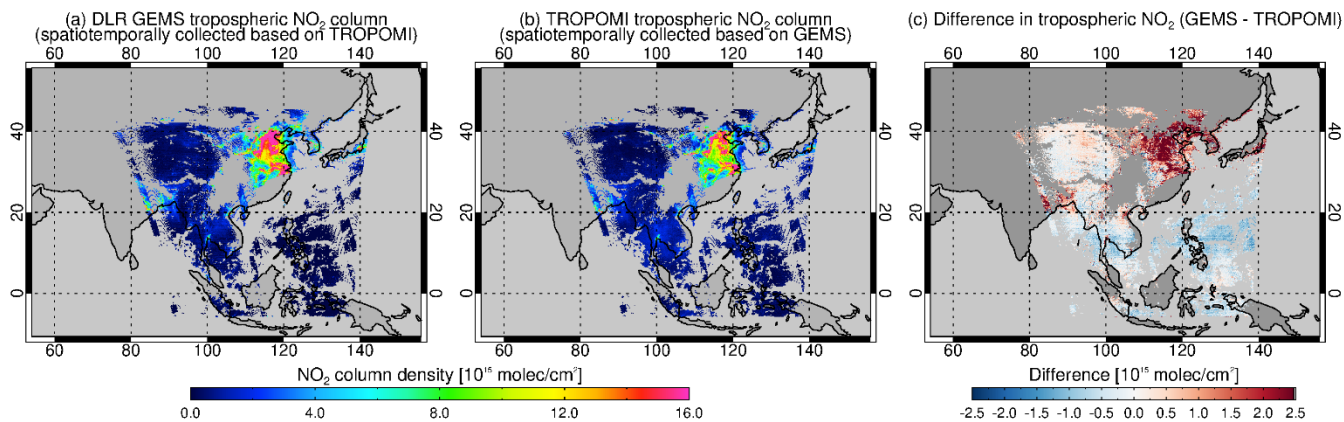
620 In addition to the systematic bias in GEMS NO<sub>2</sub> slant columns, tropospheric AMF calculations significantly influence the difference in tropospheric NO<sub>2</sub> vertical columns between GEMS and TROPOMI. Not only the viewing geometries differ, but the input datasets used to calculate the tropospheric AMF also differ between the two instruments. As described in Sect. 2.3, the DLR GEMS NO<sub>2</sub> retrieval algorithm employs the DLR OCRA cloud fraction, GEMS cloud centroid pressure v2.0, GEMS BSR v2.0, and CAMS forecast NO<sub>2</sub> profile for the AMF calculations. On the other hand, the TROPOMI NO<sub>2</sub> processor v2.4 uses the FRESCO-S cloud product (cloud fraction retrieved from the NO<sub>2</sub> spectral window at 440 nm and cloud pressure from the FRESCO-wide utilizing the NIR spectral range), TROPOMI DLER v2.0, and TM5-MP NO<sub>2</sub> profile for the AMF  
625 calculations. These different ancillary data inputs used for the AMF computation between DLR GEMS and TROPOMI may lead to significant discrepancies in retrieved tropospheric NO<sub>2</sub> vertical columns. In particular, differences in tropospheric NO<sub>2</sub> columns due to the influence of tropospheric AMFs are pronounced over polluted regions such as eastern China, South Korea, and northern India. While tropospheric AMF calculations are influenced by all ancillary data (surface albedo, terrain height, cloud parameters, and trace gas profile), one of the key factors contributing to the differences in tropospheric NO<sub>2</sub> columns between DLR GEMS and TROPOMI is a priori NO<sub>2</sub> profiles. The positive biases observed in GEMS tropospheric NO<sub>2</sub>  
630 columns over eastern China during winter are largely influenced by the CAMS forecast a priori NO<sub>2</sub> vertical profiles. The CAMS forecast model profiles used for GEMS have significantly higher surface layer NO<sub>2</sub> concentrations in these polluted regions compared to the TM5-MP profiles used for TROPOMI, consequently resulting in lower tropospheric AMFs and higher tropospheric NO<sub>2</sub> vertical columns.

635 Furthermore, there may be additional factors contributing to differences in tropospheric NO<sub>2</sub> vertical columns between the DLR GEMS and TROPOMI v2.4 product. For example, when thick aerosol layers occur over eastern China in spring, the GEMS operational algorithm which uses the visible O<sub>2</sub>-O<sub>2</sub> band often fails to detect these layers and estimates the cloud pressure close or equal to the surface pressure. In contrast, TROPOMI cloud pressure retrieval from FRESCO-wide using the NIR O<sub>2</sub>-A band has more sensitivity and yields more realistic elevated height (lower cloud pressure). In such cases (elevated  
640 aerosol layers are present), GEMS tropospheric NO<sub>2</sub> vertical columns tend to be lower than those from TROPOMI due to underestimated cloud/aerosol levels in terms of altitude.

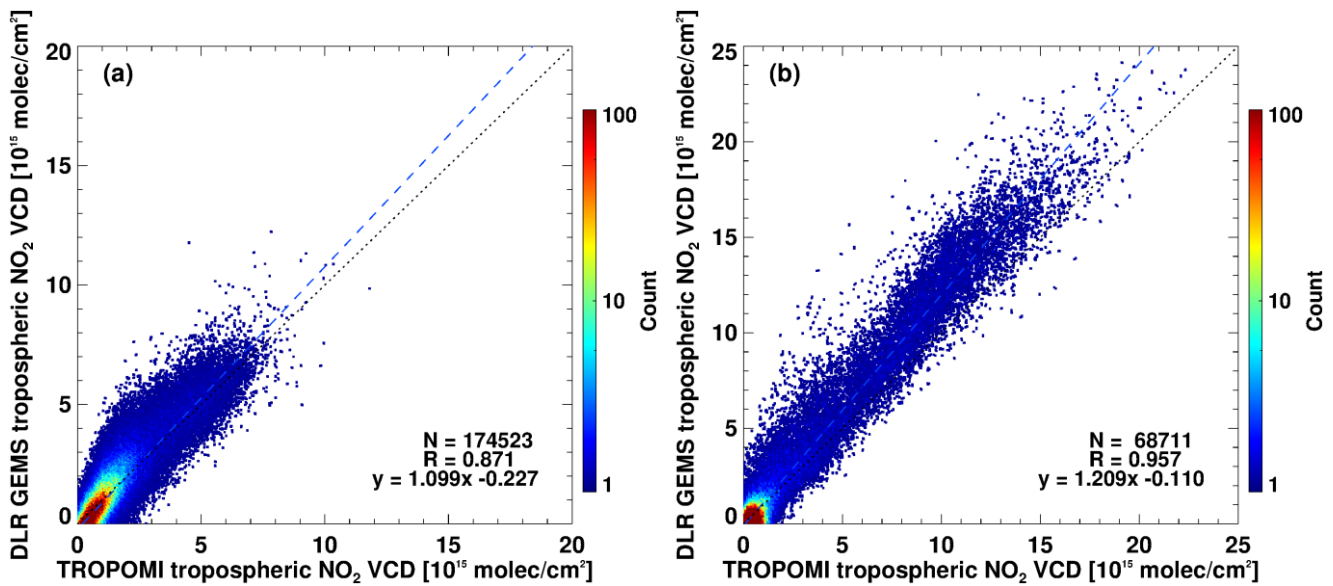




645 **Figure 18: Comparison between DLR GEMS and TROPOMI operational v2.4 tropospheric NO<sub>2</sub> columns on 14 June 2023. Only measurements with cloud radiance fractions < 0.5 are included. Both tropospheric NO<sub>2</sub> columns are regridded to a 0.1° × 0.1° resolution based on temporally and spatially collocated data for the corresponding date.**



**Figure 19: Same as Fig. 18, but for 14 December 2022.**



650 **Figure 20: Scatter plots of daily gridded DLR GEMS and TROPOMI v2.4 tropospheric NO<sub>2</sub> columns for (a) 14 June 2023 (displayed in Fig. 18) and (b) 14 December 2022 (displayed in Fig. 19), respectively. The color-coded points represent data density, and the blue dashed line indicates the linear regression.**

### 3.3 Comparison with GEMS v2.0 NO<sub>2</sub> product

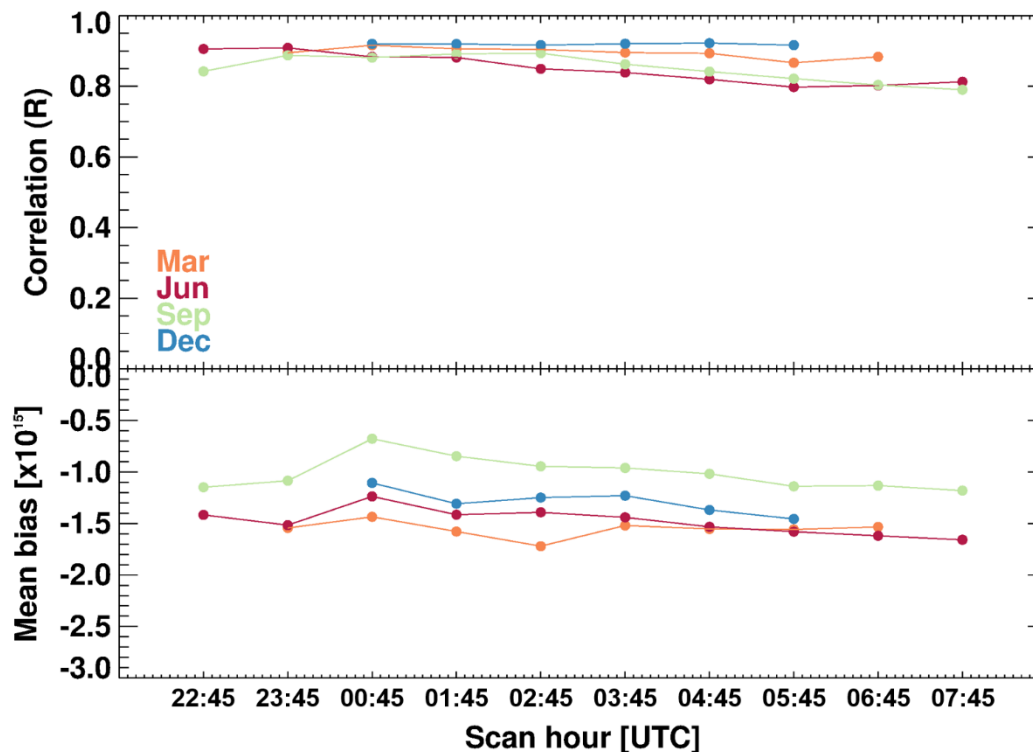
655 The DLR GEMS and GEMS operational v2.0 NO<sub>2</sub> products can be directly compared on a pixel-by-pixel basis since they originate from identical GEMS L1 radiance and irradiance spectra. A comparative evaluation is performed using the regridded mean NO<sub>2</sub> columns for each scan time from selected four specific days in March, June, September, and December, for both the DLR GEMS and GEMS operational v2.0 L2 products.

While the two retrieval algorithms are similar in that they largely follow three steps, DOAS-based NO<sub>2</sub> slant column retrievals, stratosphere-troposphere separation, and AMF calculation based on pre-calculated LUT, detailed differences in many aspects exist as described in previous sections. These differences include spectral fitting settings, stratospheric separation approaches, and ancillary data inputs in AMF calculation. Despite these differences, the final outputs of tropospheric NO<sub>2</sub> vertical columns between the two products show overall good agreement with a high correlation ranging from 0.80 to 0.92 (Fig. 21). However, the DLR GEMS tropospheric NO<sub>2</sub> vertical column is  $1.5 \times 10^{15}$  molec cm<sup>-2</sup> lower than the GEMS v2.0 tropospheric NO<sub>2</sub> columns on average. The negative biases in tropospheric NO<sub>2</sub> columns between the DLR GEMS and GEMS v2.0 are also confirmed when referenced against the TROPOMI operational v2.4 product. When comparing GEMS v2.0 with TROPOMI v2.4 tropospheric NO<sub>2</sub> columns using the same methodology as described in Sect. 3.2, GEMS v2.0 exhibits values that are 20 – 60 % higher than those of TROPOMI, whereas DLR GEMS shows values only 10 – 20 % higher.



The differences in tropospheric NO<sub>2</sub> columns between the DLR GEMS and GEMS v2.0 retrieval algorithms may be influenced by several factors. One major factor contributing to the higher tropospheric NO<sub>2</sub> columns in GEMS v2.0 is the relatively low estimation of stratospheric NO<sub>2</sub> columns. In the GEMS operational v2.0 algorithm, stratosphere-troposphere separation is conducted based on the method proposed by Bucseła et al. (2013). Tropospheric NO<sub>2</sub> contribution is estimated using the WRF-Chem model, and the a priori tropospheric NO<sub>2</sub> slant column density is subtracted from the total NO<sub>2</sub> slant column density to obtain an initial stratospheric vertical column. The field is masked wherever tropospheric contamination exceeds a pre-set threshold ( $0.3 \times 10^{15}$  molec cm<sup>-2</sup>), and then these estimated stratospheric vertical columns are binned onto a GEMS geographic grid. The binned vertical columns are interpolated over the masked areas, and the eliminated areas (hot spots) are smoothed and interpolated (Park et al., 2020). The stratospheric NO<sub>2</sub> vertical columns estimated by the GEMS operational v2.0 algorithm show a range of  $0.5 \times 10^{15}$ – $1.5 \times 10^{15}$  molec cm<sup>-2</sup> for the 04:45 UTC scan time in June. This range is lower than the stratospheric NO<sub>2</sub> column ranges reported in previous studies (Dirksen et al., 2011; Belmonte Rivas et al., 2014) and the DLR GEMS stratospheric NO<sub>2</sub> columns, which range from  $2.0 \times 10^{15}$  to  $4.0 \times 10^{15}$  molec cm<sup>-2</sup> at the same scan time in June. Consequently, the lower values of stratospheric NO<sub>2</sub> columns in GEMS v2.0 lead to higher tropospheric NO<sub>2</sub> columns. It is anticipated that the forthcoming GEMS operational v3.0 NO<sub>2</sub> product will include updates to address this issue by correcting the low estimates of stratospheric NO<sub>2</sub> column retrieval.

Another significant factor causing the difference in tropospheric NO<sub>2</sub> columns between DLR GEMS and GEMS v2.0 is the tropospheric AMF calculation. Firstly, the ancillary inputs used for AMF calculations in the two algorithms differ, and the effects of these differences in input datasets can manifest in various ways. In the DLR GEMS NO<sub>2</sub> retrieval algorithm, OCRA GEMS cloud fraction is applied instead of GEMS L2 cloud fraction. As discussed in Sect. 2.3.1.3, the OCRA cloud fraction values in clear-sky scenes are lower, resulting in higher tropospheric AMFs and lower tropospheric NO<sub>2</sub> vertical columns compared to results obtained when applying cloud corrections using the GEMS L2 cloud fraction. In addition, NO<sub>2</sub> model profile shapes are different, as the DLR GEMS algorithm employs the CAMS forecast (CAMS IFS Cy48R1) a priori NO<sub>2</sub> profile available every 3 hours, while GEMS v2.0 utilizes the monthly mean hourly NO<sub>2</sub> profiles simulated from GEOS-Chem v13 (Park et al., 2020). Moreover, differences in the number and value of reference points in the altitude-dependent AMF LUT between two algorithms can cause systematic biases.



695 Figure 21: Diurnal and seasonal variations in statistics (correlation and mean bias) between DLR GEMS and GEMS v2.0 tropospheric NO<sub>2</sub> columns. Tropospheric NO<sub>2</sub> VCDs from days 1, 10, 20, and 30 of March 2023, June 2023, September 2022, and December 2022 from both algorithms were used for the analysis.

### 3.4 Uncertainty estimates for DLR GEMS tropospheric NO<sub>2</sub> vertical columns

700 The overall uncertainty of the tropospheric NO<sub>2</sub> column ( $\sigma$ ) is determined through uncertainty propagation at each main retrieval step (Eq. 6), which is performed independently and assumed to be uncorrelated (Boersma et al., 2004; Boersma et al., 2018). The primary sources for total uncertainty are (1) the signal-to-noise ratio of the radiance and irradiance measurements and spectral fitting errors affecting the slant columns ( $\sigma_{N_s}$ ), (2) inaccuracies associated with the ~~separation-estimation~~ of stratospheric ~~and tropospheric~~ NO<sub>2</sub> columns ( $\sigma_{N_{s, strat}}$ ), and (3) systematic errors arising from uncertainties in input auxiliary parameters such as clouds, surface albedo, and a priori profile, affecting during tropospheric AMF calculation ( $\sigma_{M_{tr}}$ ) (Boersma et al., 2018).

$$\sigma = \sqrt{\left(\frac{\sigma_{N_s}}{M_{tr}}\right)^2 + \left(\frac{\sigma_{N_{s, strat}}}{M_{tr}}\right)^2 + \left(\frac{(N_s - N_{s, strat}) \sigma_{M_{tr}}}{M_{tr}^2}\right)^2} \quad (6)$$

The slant column uncertainty for DLR GEMS NO<sub>2</sub> ( $\sigma_{N_s}$ ), estimated following a statistical method described in Sect. 2.1, is  $0.9 \times 10^{15}$  molec cm<sup>-2</sup>. The uncertainty in the stratospheric columns ( $\sigma_{N_{s, strat}}$ ) is estimated on average  $2.0 \times 10^{14}$  molec cm<sup>-2</sup> based on the standard deviation of model biases (differences between simulated CAMS NO<sub>2</sub> column and observed GEMS NO<sub>2</sub> column described in Sect. 2.2.2). The tropospheric AMF calculation is the largest source of uncertainties in tropospheric NO<sub>2</sub> vertical column retrievals, particularly for polluted conditions. The uncertainties on the tropospheric AMF ( $\sigma_{M_{tr}}$ ) are mainly dependent on uncertainties of input parameters, such as the surface albedo  $\alpha_s$ , cloud top pressure  $p_c$ , cloud fraction  $f_c$ , and profile shape  $p_h$ , as well as on the sensitivity of the AMF to each of these parameters. The tropospheric AMF errors are calculated based on uncertainty propagation through the squared sum of each parameter contribution as follows (Boersma et al., 2004; De Smedt et al., 2008):

$$\sigma_{M_{tr}, AMF}^2 = \left( \frac{\partial M_{AMF}}{\partial \alpha_s} \sigma_{\alpha_s} \right)^2 + \left( \frac{\partial M_{AMF}}{\partial p_c} \sigma_{p_c} \right)^2 + \left( \frac{\partial M_{AMF}}{\partial f_c} \sigma_{f_c} \right)^2 + \left( \frac{\partial M_{AMF}}{\partial p_h} \sigma_{p_h} \right)^2 \quad (76)$$

The uncertainties of input parameters are typically estimated from the studies or obtained from comparisons with independent data. Due to missing information on the GEMS operational product for surface and cloud uncertainties, typical uncertainties used in previous studies are applied here ( $\sigma_{\alpha_s} = 0.02$ ,  $\sigma_{p_c} = 50$  hPa,  $\sigma_{f_c} = 0.05$ ) (De Smedt et al., 2018; Song et al., 2021). The uncertainty contribution from the a priori NO<sub>2</sub> profile  $\sigma_{p_h}$  is effectively described by a profile height, defined as the altitude below which 75 % of the integrated NO<sub>2</sub> profile resides (De Smedt et al., 2018).

The AMF is very sensitive to the cloud top pressure when the cloud is located below or at the level of the NO<sub>2</sub> peak. The uncertainties arising from the cloud pressure can be up to 60 %, particularly for thick clouds located close to the boundary layer over polluted regions. For higher clouds with lower cloud top pressures, the sensitivity of the AMF is much weaker. Cloud fraction also plays a significant role in determining the AMF and its associated uncertainty. While satellite measurements are filtered out for a cloud radiance fraction larger than 0.5 or a cloud fraction exceeding 0.3 in tropospheric NO<sub>2</sub> retrievals, the uncertainties related to cloud fraction are by ~25 %. The AMF sensitivity to albedo is relatively higher over polluted regions with profile shapes characterized by high surface NO<sub>2</sub> concentrations, compared to open ocean or clean background regions exhibiting smaller variations in profile shape. Large uncertainties of the AMF due to surface albedo are mainly observed in cases where the input surface albedo values are different from actual surface conditions, especially for sudden snow or ice cover. In the case of the Asia GEMS domain, the impact of aerosols on the AMF sensitivity is an important factor to be considered regarding the particle properties and the vertical distribution. The aerosol effect on the AMF is not explicitly considered in the DLR GEMS NO<sub>2</sub> algorithm, as it is assumed that the effect of the non-absorbing part of the aerosol extinction is implicitly included in the cloud correction through the effective cloud parameters (Boersma et al., 2004, 2011).

The overall uncertainty in DLR GEMS tropospheric NO<sub>2</sub> vertical columns varies depending on observation scenarios. In clean background regions, such as open ocean and rural areas with low tropospheric NO<sub>2</sub> levels, the retrieval uncertainties typically ~~range on average~~ more than 50-10-30 %, primarily dominated by slant column uncertainties. On the other hand, in polluted regions with high tropospheric NO<sub>2</sub> abundances, uncertainties in tropospheric NO<sub>2</sub> vertical columns are largely affected by

AMF errors. Particularly in heavily polluted areas during winter, where low-level clouds are present (with high cloud top pressure), the total uncertainty in tropospheric NO<sub>2</sub> columns is most pronounced, reaching up to 60 %.

In addition, the total uncertainty in GEMS tropospheric NO<sub>2</sub> columns varies with the scan hour (local time of the day). Generally, the total uncertainty is higher in polluted areas during the early morning rush hour. This is associated with a high peak-shaped profile near the surface due to increased traffic emissions within the lower tropospheric AMFs ( $M_{tr}$ ), resulting in higher total uncertainties in tropospheric NO<sub>2</sub> columns (see Eq. 6) compared to local noon.

Furthermore, for geostationary satellites observing from a fixed position, extreme viewing angles (near the edge of the scan) generally increase slant column uncertainty due to higher spectral noise. However, this increased slant column uncertainty at large viewing geometries (high solar zenith angle and viewing zenith angle) does not always lead to higher total uncertainty in tropospheric NO<sub>2</sub>, since the total uncertainty in tropospheric NO<sub>2</sub> column is also influenced by the tropospheric AMF, which varies not only with viewing geometry but also with other factors such as surface albedo and surface pressure.

#### 750 4. Summary and conclusions

The geostationary satellite instrument GEMS performs high-resolution observations in both time and space, enabling the monitoring of diurnal variability in atmospheric compositions over Asia. In this study, we developed an advanced retrieval algorithm for tropospheric NO<sub>2</sub> columns from geostationary satellite spectrometers, and applied it to GEMS measurements. The DLR GEMS NO<sub>2</sub> retrieval algorithm follows the heritage from previous and existing algorithms used for the GOME-2 and TROPOMI instruments, but improved approaches are applied to reflect the specific features of geostationary satellites, such as high temporal samplings, limited range of spatial coverage, larger zenith angles and high spatial resolution.

The DLR GEMS NO<sub>2</sub> retrieval process begins with slant column retrievals based on the DOAS method. This algorithm employs a fitting window of 425–480 nm, which is extended compared to the current fitting window used in GEMS operational v2.0 algorithm, to avoid saturation effects (primarily occurring over bright clouds in equatorial regions) at shorter wavelengths and systematic spectral features observed above 480 nm. In addition to trace gas absorption cross-sections, including NO<sub>2</sub> and related interfering absorbers, a pseudo cross-section is introduced in the DOAS fit for polarization correction. DLR GEMS NO<sub>2</sub> slant columns show improved quality and lower uncertainties compared to those from GEMS L2 v2.0, as assessed through a posteriori statistical analysis. These improvements in GEMS NO<sub>2</sub> slant columns are mainly attributed to the use of a larger fitting window, along with minor effects with polarization correction and advanced spectral calibration.

The total slant column retrieved by the DOAS fit is separated into stratospheric and tropospheric contributions. For the stratosphere-troposphere separation in GEMS measurements, we developed and evaluated two approaches: (1) STREAM, originally employed for stratosphere-troposphere separation in current polar orbiting satellites, adapted to geostationary satellite observations, (2) estimation of stratospheric NO<sub>2</sub> columns using the CAMS forecast (IFS Cy48R1) model, which introduced comprehensive stratospheric chemistry. Both methods successfully provide hourly estimates of stratospheric NO<sub>2</sub>, exhibiting diurnal variability of stratospheric fields within reasonable value ranges. However, STREAM has limitations in

describing small-scale variations in stratospheric NO<sub>2</sub> due to the application of a relatively coarse convolution kernel, and systematic biases occurred near the boundary of FOV due to limited domain coverage. On the other hand, the stratospheric NO<sub>2</sub> column estimated from the CAMS forecast model not only describes the diurnal cycle but also captures the small-scale variations in stratospheric NO<sub>2</sub> fields, which demonstrates that this approach is more suitable for application to geostationary missions like GEMS, TEMPO and Sentinel-4 with high spatiotemporal resolution. It is notable that when utilizing CAMS forecast model data for stratospheric NO<sub>2</sub> estimation, biases between the modelled columns and observed GEMS columns should be corrected. In this algorithm, model bias patterns in the stratosphere are parameterized as a function of latitude and scan hour using selected stratospheric dominant pixels, such as clouded or clean background pixels.

Tropospheric NO<sub>2</sub> slant columns are converted to vertical columns by applying the tropospheric AMF. In the tropospheric AMF calculation, cloud properties, surface albedo and a priori NO<sub>2</sub> profiles are important, as they significantly affect the tropospheric AMF values. In this study, we evaluated the influence of cloud correction on GEMS tropospheric NO<sub>2</sub> retrieval using two different cloud fraction datasets. One is cloud fractions retrieved from DLR OCRA retrieval adapted to GEMS level 1 data, while the other is cloud fractions from GEMS L2 v2.0 product. Although the two products have overall good agreement, spatial patterns are found that OCRA cloud fractions are smaller by about 0.1 than GEMS L2 v2.0 cloud fractions for clear-sky scenes. Compared to cloud corrections using the GEMS L2 v2.0 cloud fraction, the use of smaller OCRA cloud fractions increases the tropospheric AMF by ~28 % and decreases the tropospheric NO<sub>2</sub> columns by ~22 % for clear-sky conditions in polluted regions. Additionally, when cross-comparison with the TROPOMI product for clear-sky conditions, OCRA cloud fractions and tropospheric NO<sub>2</sub> columns retrieved using OCRA-based cloud corrections show closer agreement compared to GEMS L2 v2.0 cloud fractions and the applied retrieval results.

The impacts of surface albedo on GEMS tropospheric NO<sub>2</sub> retrievals were assessed by comparing the GEMS v2.0 BSR and TROPOMI LER climatology v2.0 product. In general, the GEMS BSR shows higher values over land and lower values over the sea in comparison to the TROPOMI LER climatology. The difference between the two products is more apparent in winter, which may be attributed to discrepancies between the TROPOMI LER climatology and actual surface conditions, particularly in snow/ice scenes. The differences in tropospheric NO<sub>2</sub> columns depending on surface albedo are more pronounced in winter than in summer, especially over heavily polluted regions such as eastern China and northern India compared to clean background regions.

The a priori NO<sub>2</sub> profiles from the CAMS forecast model, applied in the DLR GEMS algorithm, effectively capture variations in NO<sub>2</sub> concentrations depending on emission patterns and meteorological conditions throughout the day with a high spatial and temporal resolution. CAMS forecast a priori NO<sub>2</sub> profiles show the highest surface concentration during morning commuting hours with elevated traffic volumes. As noon approaches, NO<sub>2</sub> concentrations decrease due to reduced source emissions, enhanced vertical mixing, and photolysis. The minimum tropospheric NO<sub>2</sub> concentration during midday begins to increase again with increased traffic towards the end of work hours. This highlights the suitability of CAMS forecast a priori profiles for tropospheric NO<sub>2</sub> retrievals from geostationary satellite measurements.

The retrieved DLR GEMS tropospheric NO<sub>2</sub> columns show the spatial and temporal variability over Asia with high spatial  
805 resolution. High tropospheric NO<sub>2</sub> columns are observed over urban and industrial regions in eastern China, South Korea, and  
northern India, with hotspot signals detected in major city clusters. Tropospheric NO<sub>2</sub> levels peak in the morning in urban  
areas due to commuter traffic emissions, decrease around noon, and then rise again in the afternoon. In addition, spatial  
gradients from city centers to surrounding areas are detected, with high NO<sub>2</sub> levels in megacities gradually decreasing with  
distance due to reduced emissions and horizontal transport. In open ocean and rural regions, where NO<sub>2</sub> sources are primarily  
810 natural emissions, significantly lower tropospheric NO<sub>2</sub> columns are observed.

The evaluation of DLR GEMS tropospheric NO<sub>2</sub> columns was performed by comparisons with independent TROPOMI L2  
v2.4 and GEMS L2 v2.0 NO<sub>2</sub> products. Spatiotemporally regridded DLR GEMS and TROPOMI NO<sub>2</sub> data were used for  
comparisons. Overall, good agreement is observed between DLR GEMS and TROPOMI tropospheric NO<sub>2</sub> columns with high  
correlation coefficients ( $R = 0.87$  and  $0.96$  for test days). The datasets also agree well in terms of spatial distribution and value  
815 range of tropospheric NO<sub>2</sub>. However, systematic biases are evident, with GEMS tropospheric NO<sub>2</sub> columns showing lower  
values in the open ocean and higher values over land, particularly in polluted regions or at the edges of the domain. These  
differences are attributed to systematic gradients in GEMS NO<sub>2</sub> slant columns in the north-south direction (arising from the  
imperfect radiometric calibration and residual corrections in GEMS L1 v1.2.4) and tropospheric AMFs calculated using  
different ancillary input datasets. Additionally, the comparison between DLR GEMS and GEMS L2 v2.0 NO<sub>2</sub> also shows good  
820 agreement with high correlation coefficients ranging from  $0.80$  to  $0.92$ . However, DLR GEMS tropospheric NO<sub>2</sub> columns  
consistently show lower values compared to GEMS v2.0, with mean biases of  $1.5 \times 10^{15}$  molec cm<sup>-2</sup>. The differences may be  
due to significantly underestimated stratospheric NO<sub>2</sub> columns in GEMS v2.0 and differences in ancillary inputs used in AMF  
calculations.

The overall uncertainty in DLR GEMS tropospheric NO<sub>2</sub> vertical columns varies depending on the observation conditions. In  
825 regions with minimal pollution, like open ocean and rural areas, retrieval uncertainties typically range from 10 % to 30 %,  
mainly driven by uncertainties in slant columns. Conversely, in heavily polluted regions with high tropospheric NO<sub>2</sub> levels,  
uncertainties in tropospheric NO<sub>2</sub> columns are primarily influenced by errors in tropospheric AMF calculations. In winter,  
especially in heavily polluted areas with low-level clouds, the total uncertainty in tropospheric NO<sub>2</sub> columns is most  
pronounced.

830 The DLR GEMS NO<sub>2</sub> data quality will be further analysed using additional data from ground-based measurements including  
Multi-Axis differential optical absorption spectroscopy (MAX-DOAS), Pandora, and in-situ measurements covering different  
pollution conditions and periods. In addition, based on the good capability of the DLR GEMS tropospheric NO<sub>2</sub> columns to  
capture the temporal and spatial variability at the city scale, estimations of the diurnal cycle in NO<sub>2</sub> source emissions over Asia  
will be further studied. Remaining issues contributing to retrieval uncertainties and systematic biases in the current version of  
835 the DLR GEMS NO<sub>2</sub> algorithm will be improved in the near future with the application of updated GEMS operational L1 and  
L2 version data, set for release in the near future. Furthermore, this retrieval algorithm can be easily adapted to other

geostationary satellite instruments, such as TEMPO and Sentinel-4, enabling hourly monitoring and analysis across each continent in the future.

## Appendix A: Spectral fit sensitivity studies

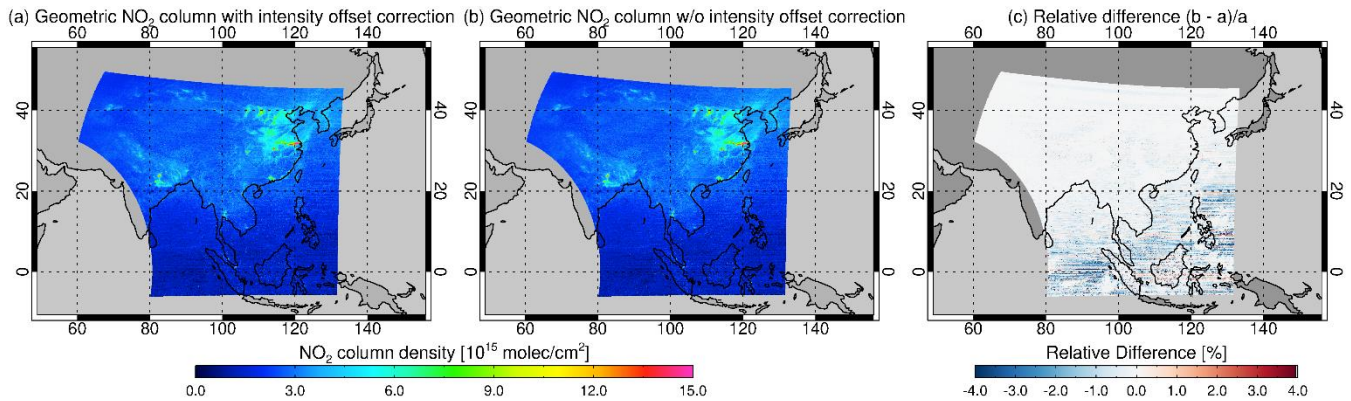
840 We investigate the effect of different spectral fit settings on the GEMS NO<sub>2</sub> slant column retrievals. Since the slant column is influenced by variations in viewing geometries, such as solar zenith angle (SZA) and viewing zenith angle (VZA), we used the geometric NO<sub>2</sub> vertical column, obtained by dividing the slant column by the geometric AMF ( $1/\cos(\text{SZA}) + 1/\sin(\text{VZA})$ ), to facilitate evaluations and comparisons.

### 845 A1. Intensity offset correction

As described in Sect 2.1, the intensity offset correction is applied in the standard setting for DLR GEMS NO<sub>2</sub> slant column retrievals in this study. We evaluated the impact of this correction by comparing GEMS NO<sub>2</sub> spectral fitting retrievals with and without the intensity offset correction, while keeping other settings identical.

850 Although the overall impact of the intensity offset correction is small, its application results in increased slant columns over the ocean located south of the FOV (Fig. A1). This increase is attributed to the partial compensation of vibrational Raman scattering in ocean water through the additive offset correction in the spectral fitting. The increased slant columns over the ocean due to the intensity offset correction mitigate the known systematic biases along the north-south direction of GEMS NO<sub>2</sub> slant columns (see Sect. 3.2). Additionally, the inclusion of the intensity offset correction in GEMS NO<sub>2</sub> spectral fitting retrievals leads to a decrease in fitting RMS values and slant column uncertainties, though the improvement is minor.

855



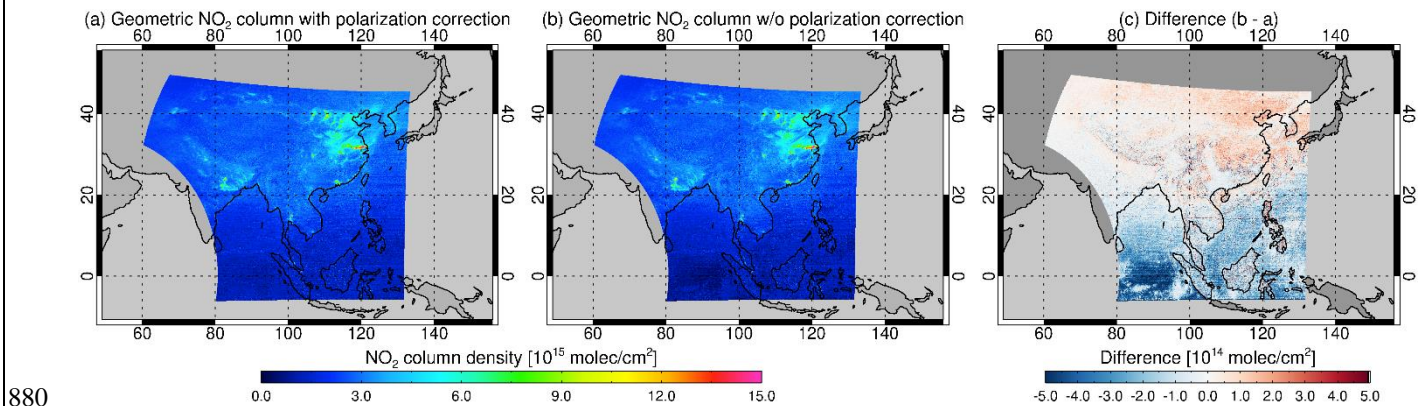
**Figure A1: GEMS geometric NO<sub>2</sub> vertical columns retrieved (a) with and (b) without intensity offset correction, and (c) the relative differences between the two ((b - a)/a) for 15 March 2023 at 04:45 UTC.**



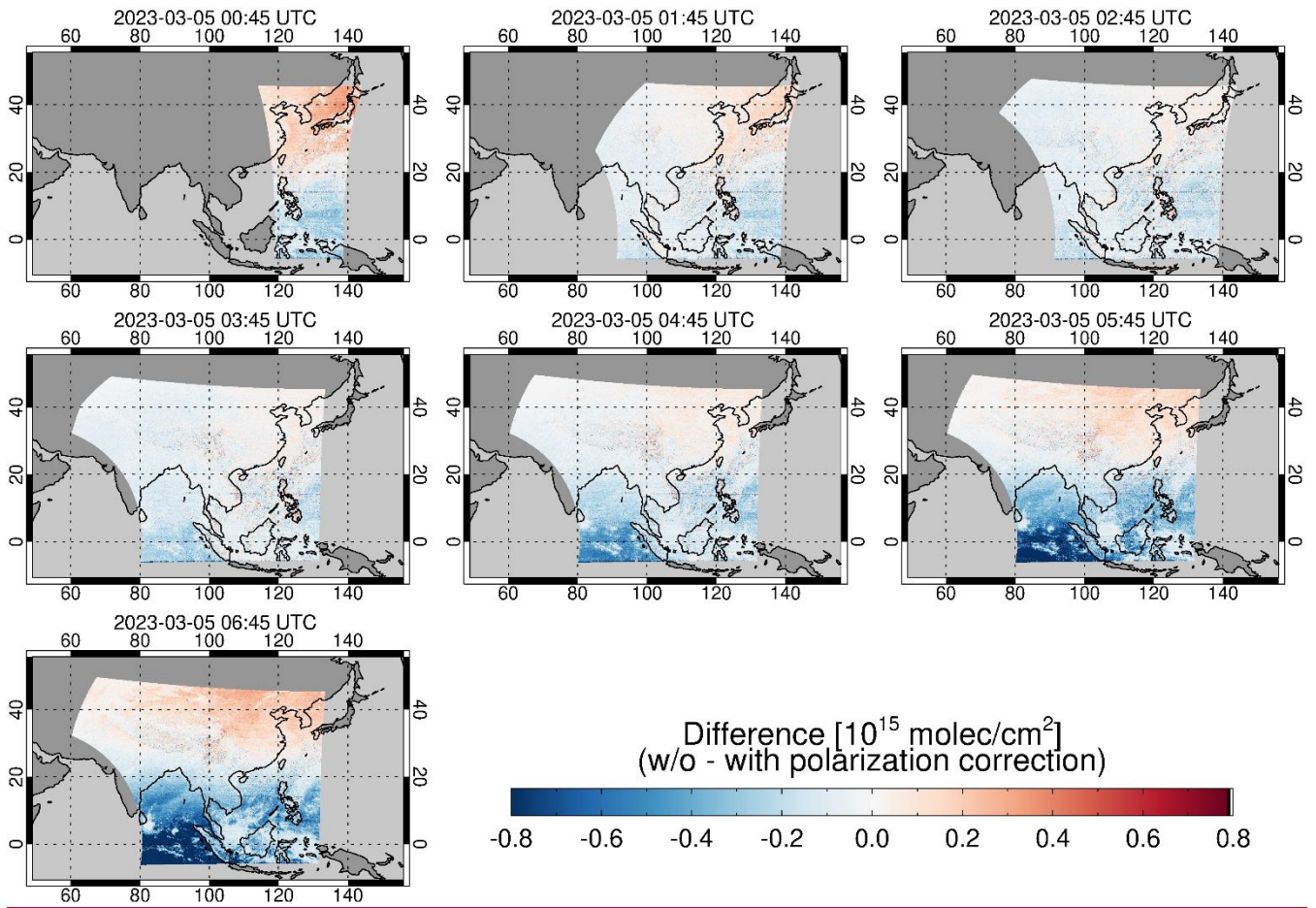
860 **A2. Polarization correction**

To improve the retrieval of trace gases from satellite measurements, it is important to obtain stable and precise measurements of reflected radiance. One of the error sources in the measured radiance spectrum is the polarization of light. The radiometric response of a satellite instrument is influenced by the polarization state of incoming light, which is caused by gratings, mirrors, and prisms. To reduce the instrument's polarization sensitivity, two representative methods have been used: (1) a depolarization method that destroys the polarization information through scrambling, and (2) a detection of polarization states in the atmosphere using specialized devices. However, since GEMS lacks both a polarization measurement device (PMD) and a scrambler, polarization correction should be applied to improve the spectral fitting retrieval of NO<sub>2</sub> from GEMS measurements (Choi et al., 2024). Therefore, we included a pseudo cross-section to correct the spectral polarization sensitivity of GEMS as described in Sect. 2.1.

870 Figure A2 illustrates the impact of polarization correction on the GEMS NO<sub>2</sub> column retrieval by comparing results with and without polarization correction under identical spectral fitting settings. Without polarization correction, inhomogeneous spatial distributions of NO<sub>2</sub> slant columns are observed. Notably, the uneven NO<sub>2</sub> slant column distribution is closely related to cloud distribution over the ocean, as scattering in liquid/ice clouds and reflection at the dark ocean surface significantly influence the degree of polarization. In addition, we found a diurnal variation in the effect of polarization correction on NO<sub>2</sub> slant column retrievals. Polarization sensitivity is strongly influenced by changes in viewing geometry, particularly the change of the solar zenith angle (larger solar zenith angles result in greater polarization sensitivity, while smaller solar zenith angles result in lower polarization sensitivity). Therefore, polarization correction has a larger effect on NO<sub>2</sub> slant column retrievals in the early morning and sunset compared to noon (see Fig. A3).



880 **Figure A2: GEMS geometric NO<sub>2</sub> vertical columns retrieved (a) with and (b) without polarization correction, and (c) the differences between the two (b - a) for 15 March 2023 at 04:45 UTC.**



885

**Figure A3: The diurnal variation of the difference in GEMS geometric NO<sub>2</sub> vertical columns without and with polarization correction on 5 March 2023 from 00:45 to 06:45 UTC.**

*Data availability.* The DLR GEMS NO<sub>2</sub> product is available on request. The DLR GEMS OCRA product is available on request. GEMS L2 v2.0 NO<sub>2</sub> and cloud product can be accessed at <https://nesc.nier.go.kr/en/html/cntnts/91/static/page.do> (National Institute of Environmental Research, NIER, last access: 15 April 2024). TROPOMI NO<sub>2</sub> and cloud product are freely available via <https://s5phub.copernicus.eu/> (Sentinel-5P Pre-Operations Data Hub, last access: 15 April 2024). TROPOMI directionally dependent Lambertian-equivalent reflectivity (DLER) product is freely available via [https://www.temis.nl/surface/albedo/tropomi\\_ler.php](https://www.temis.nl/surface/albedo/tropomi_ler.php) (TEMIS website, last access: 15 April 2024).

895 *Author contributions.* SS designed and developed the DLR GEMS NO<sub>2</sub> algorithm. SS, PV, and DL contributed to the study conception and design. RL and VMG provided the DLR GEMS OCRA product. KPH, PH, and PV collected datasets and assisted in data interpretation. HL and JK provided information on the GEMS L2 products and algorithms. SS performed the final data analysis and interpreted the results together with co-authors. SS wrote the paper with feedback and contributions from all co-authors.

900

*Competing interests.* At least one of the (co-)authors is a member of the editorial board of Atmospheric Measurement Techniques.

*Acknowledgements.* We thank the National Institute of Environmental Research of South Korea for providing GEMS data. The authors also  
905 acknowledge the support and information from the PEGASOS project (funding by ESA under ESA Contract No. 4000138176/22/I-DT-Ir). The authors also gratefully acknowledge the free use of Sentinel-5 Precursor data. Sentinel-5 Precursor is a European Space Agency (ESA) mission on behalf of the European Commission (EC).

## References

- An, J., Shi, Y., Wang, J., Zhu, B.: Temporal Variations of O<sub>3</sub> and NO<sub>x</sub> in the Urban Background Atmosphere of Nanjing, East China. Arch Environ Contam Toxicol 71, 224–234, doi://10.1007/s00244-016-0290-8, 2016.
- Beirle, S., Platt, U., Wenig, M., and Wagner, T.: Weekly cycle of NO<sub>2</sub> by GOME measurements: a signature of anthropogenic sources, Atmos. Chem. Phys., 3, 2225–2232, https://doi.org/10.5194/acp-3-2225-2003, 2003.
- Beirle, S., Boersma, K. F., Platt, U., Lawrence, M. G., and Wagner, T.: Megacity emissions and lifetimes of nitrogen oxides probed from space, Science, 333, 1737–1739, 2011.
- 915 Beirle, S., Hörmann, C., Jöckel, P., Liu, S., Penning de Vries, M., Pozzer, A., Sihler, H., Valks, P., and Wagner, T.: The STRatospheric Estimation Algorithm from Mainz (STREAM): estimating stratospheric NO<sub>2</sub> from nadir-viewing satellites by weighted convolution, Atmos. Meas. Tech., 9, 2753–2779, https://doi.org/10.5194/amt-9-2753-2016, 2016.
- Belmonte Rivas, M., Veeffkind, P., Boersma, F., Levelt, P., Eskes, H., and Gille, J.: Intercomparison of daytime stratospheric NO<sub>2</sub> satellite retrievals and model simulations, Atmos. Meas. Tech., 7, 2203–2225, https://doi.org/10.5194/amt-7-2203-2014, 2014.
- 920 Boersma, K. F., Eskes, H. J., and Brinksma, E. J.: Error analysis for tropospheric NO<sub>2</sub> retrieval from space, J. Geophys. Res.-Atmos., 109, D04311, https://doi.org/10.1029/2003JD003962, 2004.
- Boersma, K. F., Eskes, H. J., Veeffkind, J. P., Brinksma, E. J., van der A, R. J., Sneep, M., van den Oord, G. H. J., Levelt, P. F., Stammes, P., Gleason, J. F., and Bucsele, E. J.: Near-real time retrieval of tropospheric NO<sub>2</sub> from OMI, Atmos. Chem. Phys., 7, 2103–2118, https://doi.org/10.5194/acp-7-2103-2007, 2007.
- 925 Boersma, K. F., Eskes, H. J., Dirksen, R. J., van der A, R. J., Veeffkind, J. P., Stammes, P., Huijnen, V., Kleipool, Q. L., Sneep, M., Claas, J., Leitão, J., Richter, A., Zhou, Y., and Brunner, D.: An improved tropospheric NO<sub>2</sub> column retrieval algorithm for the Ozone Monitoring Instrument, Atmos. Meas. Tech., 4, 1905–1928, https://doi.org/10.5194/amt-4-1905-2011, 2011.
- Boersma, K. F., Eskes, H. J., Richter, A., De Smedt, I., Lorente, A., Beirle, S., van Geffen, J. H. G. M., Zara, M., Peters, E., Van Roozendaal, M., Wagner, T., Maasackers, J. D., van der A, R. J., Nightingale, J., De Rudder, A., Irie, H., Pinardi, G., Lambert, J.-C., and Compernelle, S. C.: Improving algorithms and uncertainty estimates for satellite NO<sub>2</sub> retrievals: results from the quality assurance for the essential climate variables (QA4ECV) project, Atmos. Meas. Tech., 11, 6651–6678, https://doi.org/10.5194/amt-11-6651-2018, 2018.
- 930
- Bovensmann, H., Burrows, J. P., Buchwitz, M., Frerick, J., Rozanov, V. V., Chance, K. V., and Goede, A. P. H.: SCIAMACHY: Mission objectives and measurement modes, J. Atmos. Sci., 56, 127–150, 1999.
- Bucsele, E. J., Krotkov, N. A., Celarier, E. A., Lamsal, L. N., Swartz, W. H., Bhartia, P. K., Boersma, K. F., Veeffkind, J. P., Gleason, J. F., and Pickering, K. E.: A new stratospheric and tropospheric NO<sub>2</sub> retrieval algorithm for nadir-viewing satellite instruments: applications to OMI, Atmos. Meas. Tech., 6, 2607–2626, https://doi.org/10.5194/amt-6-2607-2013, 2013.
- 935
- Cahalan, R. F., Ridgway, W., Wiscombe, W. J., Bell, T. L., and Snider, J. B.: The albedo of fractal stratocumulus clouds, J. Atmos. Sci., 51, 2434–2455, 1994.
- Callies, J., Corpaccioli, E., Eisinger, M., Hahne, A., and Lefebvre, A.: GOME-2-Metop’s second-generation sensor for operational ozone monitoring, ESA Bulletin, 102, 28–36, 2000.
- 940
- Chabrilat, S., Minganti, D., Huijnen, V., and Remy, S.: Report documenting the changes in PSC parameterization and improvements of ozone hole forecasts, https://doi.org/10.24380/2NXV-H84F, 2023.

- 945 [Choi, H., Liu, X., Jeong, U., Chong, H., Kim, J., Ahn, M. H., Ko, D. H., Lee, D.-W., Moon, K.-J., and Lee, K.-M.: Geostationary Environment Monitoring Spectrometer \(GEMS\) polarization characteristics and correction algorithm, \*Atmos. Meas. Tech.\*, \*\*17\*\*, 145–164, <https://doi.org/10.5194/amt-17-145-2024>, 2024.](https://doi.org/10.5194/amt-17-145-2024)
- De Smedt, I., Theys, N., Yu, H., Danckaert, T., Lerot, C., Compernelle, S., Van Roozendael, M., Richter, A., Hilboll, A., Peters, E., Pedergnana, M., Loyola, D., Beirle, S., Wagner, T., Eskes, H., van Geffen, J., Boersma, K. F., and Veefkind, P.: Algorithm theoretical baseline for formaldehyde retrievals from S5P TROPOMI and from the QA4ECV project, *Atmos. Meas. Tech.*, **11**, 2395–2426, <https://doi.org/10.5194/amt-11-2395-2018>, 2018.
- 950 Dirksen, R. J., Boersma, K. F., Eskes, H. J., Ionov, D. V., Bucsela, E. J., Levelt, P. F., and Kelder, H. M.: Evaluation of stratospheric NO<sub>2</sub> retrieved from the Ozone Monitoring Instrument: Intercomparison, diurnal cycle, and trending, *J. Geophys. Res.*, **116**, D08305, <https://doi.org/10.1029/2010jd014943>, 2011.
- ECMWF: CAMS: Global atmospheric composition forecast data documentation, <https://confluence.ecmwf.int/display/CKB/CAMS%3A+Global+atmospheric+composition+forecast+data+documentation>, 2023.
- 955 Eskes, H., Tsikerdekis, A., Ades, M., Alexe, M., Benedictow, A. C., Bennouna, Y., Blake, L., Bouarar, I., Chabrilat, S., Engelen, R., Errera, Q., Flemming, J., Garrigues, S., Griesfeller, J., Huijnen, V., Ilic, L., Inness, A., Kapsomenakis, J., Kipling, Z., Langerock, B., Mortier, A., Parrington, M., Pison, I., Pitkanen, M., Remy, S., Richter, A., Schoenhardt, A., Schulz, M., Thouret, V., Warneke, T., Zerefos, C., and Peuch, V.-H.: Technical Note: Evaluation of the Copernicus Atmosphere Monitoring Service Cy48R1 upgrade of June 2023, *EGUsphere* [preprint], <https://doi.org/10.5194/egusphere-2023-3129>, 2024.
- 960 Eskes, H., Tsikerdekis, A., Benedictow, A., Bennouna, Y., Blake, L., Bouarar, I., Errera, Q., Griesfeller, J., Ilic, L., Kapsomenakis, J., Langerock, B., Mortier, A., Pison, I., Pitkanen, M., Richter, A., Schönhardt, A., Schulz, M., Thouret, V., Warneke, T., and Zerefos, C.: Upgrade verification note for the CAMS near-real time global atmospheric composition service: Evaluation of the e-suite for the CAMS CY48R1 upgrade of 27 June 2023, <https://doi.org/10.24380/rzg1-8f31>, 2023.
- Govaerts, Y. M., A. Lattanzio, B. Pinty, and J. Schmetz.: Consistent surface albedo retrieval from two adjacent geostationary satellites, *Geophys. Res. Lett.*, **31**, L15201, doi:10.1029/2004GL020418, 2004.
- 965 Kim, B.-R., Kim, G., Cho, M., Choi, Y.-S., and Kim, J.: First results of cloud retrieval from the Geostationary Environmental Monitoring Spectrometer, *Atmos. Meas. Tech.*, **17**, 453–470, <https://doi.org/10.5194/amt-17-453-2024>, 2024.
- Kim, J., Jeong, U., Ahn, M.-H., Kim, J. H., Park, R. J., Lee, H., Song, C. H., Choi, Y.-S., Lee, K.-H., Yoo, J.-M., Jeong, M.-J., Park, S. K., Lee, K.-M., Song, C.-K., Kim, S.-W., Kim, Y. J., Kim, S.-W., Kim, M., Go, S., Liu, X., Chance, K., Chan Miller, C., Al-Saadi, J.,
- 970 Veihelmann, B., Bhartia, P. K., Torres, O., Abad, G. G., Haffner, D. P., Ko, D. H., Lee, S. H., Woo, J.-H., Chong, H., Park, S. S., Nicks, D., Choi, W. J., Moon, K.-J., Cho, A., Yoon, J., Kim, S.-K., Hong, H., Lee, K., Lee, H., Lee, S., Choi, M., Veefkind, P., Levelt, P. F., Edwards, D. P., Kang, M., Eo, M., Bak, J., Baek, K., Kwon, H.-A., Yang, J., Park, J., Han, K. M., Kim, B.-R., Shin, H.-W., Choi, H., Lee, E., Chong, J., Cha, Y., Koo, J.-H., Irie, H., Hayashida, S., Kasai, Y., Kanaya, Y., Liu, C., Lin, J., Crawford, J. H., Carmichael, G. R., Newchurch, M. J., Lefer, B. L., Herman, J. R., Swap, R. J., Lau, A. K. H., Kurosu, T. P., Jaross, G., Ahlers, B., Dobber, M., McElroy, C. T., and Choi, Y.: New Era of Air Quality Monitoring from Space: Geostationary Environment Monitoring Spectrometer (GEMS), *B. Am. Meteorol. Soc.*, **101**, E1–E22, <https://doi.org/10.1175/bams-d-18-0013.1>, 2020.
- 975 Kleipool, Q. L., Dobber, M. R., de Haan, J. F., and Levelt, P. F.: Earth surface reflectance climatology from 3 years of OMI data, *J. Geophys. Res.-Atmos.*, **113**, D18308, <https://doi.org/10.1029/2008JD010290>, 2008.
- Lampel, J., Pöhler, D., Tschirter, J., Frieß, U., and Platt, U.: On the relative absorption strengths of water vapour in the blue wavelength
- 980 range, *Atmos. Meas. Tech.*, **8**, 4329–4346, <https://doi.org/10.5194/amt-8-4329-2015>, 2015.

- Levelt, P. F., Van den Oord, G. H. J., Dobber, M. R., Malkki, A., Visser, H., de Vries, J., Stammes, P., Lundell, J., and Saari, H.: The Ozone Monitoring Instrument, *IEEE T. Geosci. Remote Sens.*, 44, 1093–1101, 2006.
- 985 Li, J., Wang, Y., Zhang, R., Smeltzer, C., Weinheimer, A., Herman, J., Boersma, K. F., Celarier, E. A., Long, R. W., Szykman, J. J., Delgado, R., Thompson, A. M., Knepp, T. N., Lamsal, L. N., Janz, S. J., Kowalewski, M. G., Liu, X., and Nowlan, C. R.: Comprehensive evaluations of diurnal NO<sub>2</sub> measurements during DISCOVER-AQ 2011: effects of resolution-dependent representation of NO<sub>x</sub> emissions, *Atmos. Chem. Phys.*, 21, 11133–11160, <https://doi.org/10.5194/acp-21-11133-2021>, 2021.
- Liu, S., Valks, P., Pinardi, G., Xu, J., Chan, K. L., Argyrouli, A., Lutz, R., Beirle, S., Khorsandi, E., Baier, F., Huijnen, V., Bais, A., Donner, S., Dörner, S., Gratsea, M., Hendrick, F., Karagiozidis, D., Lange, K., PETERS, A. J. M., Remmers, J., Richter, A., Van Roozendaal, M., Wagner, T., Wenig, M., and Loyola, D. G.: An improved TROPOMI tropospheric NO<sub>2</sub> research product over Europe, *Atmos. Meas. Tech.*, 14, 7297–7327, <https://doi.org/10.5194/amt-14-7297-2021>, 2021.
- 990 Loyola, D. and Ruppert, T.: A new PMD cloud-recognition algorithm for GOME, *ESA Earth Observation Quarterly*, 58, 45–47, 1998.
- Loyola, D. G., Gimeno García, S., Lutz, R., Argyrouli, A., Romahn, F., Spurr, R. J. D., Pedergrana, M., Doicu, A., Molina García, V., and Schüssler, O.: The operational cloud retrieval algorithms from TROPOMI on board Sentinel-5 Precursor, *Atmos. Meas. Tech.*, 11, 409–427, <https://doi.org/10.5194/amt-11-409-2018>, 2018.
- 995 Loyola, D. G., Xu, J., Heue, K.-P., and Zimmer, W.: Applying FP\_ILM to the retrieval of geometry-dependent effective Lambertian equivalent reflectivity (GE\_LER) daily maps from UVN satellite measurements, *Atmos. Meas. Tech.*, 13, 985–999, <https://doi.org/10.5194/amt-13-985-2020>, 2020.
- Lutz, R., Loyola, D., Gimeno García, S., and Romahn, F.: OCRA radiometric cloud fractions for GOME-2 on MetOp-A/B, *Atmos. Meas. Tech.*, 9, 2357–2379, <https://doi.org/10.5194/amt-9-2357-2016>, 2016.
- 1000 Martin, R. V., Chance, K., Jacob, D. J., Kurosu, T. P., Spurr, R. J., Bucsela, E., Gleason, J. F., Palmer, P. I., Bey, I., Fiore, A. M., et al.: An improved retrieval of tropospheric nitrogen dioxide from GOME, *J. Geophys. Res.-Atmos.*, 107, 4437, <https://doi.org/10.1029/2001JD001027>, 2002.
- Molina Garcia, V.: Retrieval of cloud properties from EPIC/DSCOV, Dissertation, Technical University of Munich, <https://mediatum.ub.tum.de/1662361>, 2022.
- 1005 Munro, R., Lang, R., Klaes, D., Poli, G., Retscher, C., Lindstrot, R., Huckle, R., Lacan, A., Grzegorski, M., Holdak, A., Kokhanovsky, A., Livschitz, J., and Eisinger, M.: The GOME-2 instrument on the Metop series of satellites: instrument design, calibration, and level 1 data processing – an overview, *Atmos. Meas. Tech.*, 9, 1279–1301, <https://doi.org/10.5194/amt-9-1279-2016>, 2016.
- Park, J., Lee, H., and Hong, H.: Geostationary Environment Monitoring Spectrometer (GEMS) Algorithm Theoretical Basis Document NO<sub>2</sub> Retrieval Algorithm, available at: <https://nesc.nier.go.kr/ko/html/satellite/doc/doc.do> (last access: 15 April 2024), 2020.
- 1010 Peters, E., Wittrock, F., Richter, A., Alvarado, L. M. A., Rozanov, V. V., and Burrows, J. P.: Liquid water absorption and scattering effects in DOAS retrievals over oceans, *Atmos. Meas. Tech.*, 7, 4203–4221, <https://doi.org/10.5194/amt-7-4203-2014>, 2014.
- Platt, U. and Stutz, J.: *Differential Optical Absorption Spectroscopy*, Springer, 2008.
- Pope, R. M. and Fry, E. S.: Absorption spectrum (380–700 nm) of pure water. II. Integrating cavity measurements, *Appl. Opt.*, 36, 8710–8723, 1997.
- 1015 Richter, A., Begoin, M., Hilboll, A., and Burrows, J. P.: An improved NO<sub>2</sub> retrieval for the GOME-2 satellite instrument, *Atmos. Meas. Tech.*, 4, 1147–1159, <https://doi.org/10.5194/amt-4-1147-2011>, 2011.
- Rothman, L. S., Gordon, I. E., Barber, R. J., Dothe, H., Gamache, R. R., Goldman, A., Perevalov, V. I., Tashkun, S. A., and Tennyson, J.: HITRAN, the high-temperature molecular spectroscopic database, *J. Quant. Spectrosc. Radiat. Transf.*, 111, 2139–2150, 2010.



- 1020 Roujean, J.-L., Leroy, M., and Deschamps, P.-Y.: A bidirectional reflectance model of the Earth's surface for the correction of remote sensing data, *Journal of Geophysical Research: Atmospheres*, 97, 20 455–20 468, 1992
- Seinfeld, J. H. and Pandis, S. N.: *Atmospheric Chemistry and Physics: from air pollution to climate change*, 3rd ed., John Wiley & Sons Inc., Hoboken, New Jersey, 2016.
- Serdyuchenko, A., Gorshchev, V., Weber, M., Chehade, W., and Burrows, J. P.: High spectral resolution ozone absorption cross-sections – Part 2: Temperature dependence, *Atmos. Meas. Tech.*, 7, 625–636, <https://doi.org/10.5194/amt-7-625-2014>, 2014.
- 1025 Shindell, D. T., Faluvegi, G., Koch, D. M., Schmidt, G. A., Unger, N., and Bauer, S. E.: Improved Attribution of Climate Forcing to Emissions, *Science*, 326, 716–718, <https://doi.org/10.1126/science.1174760>, 2009.
- Sillman, S., Logan, J. A., and Wofsy, S. C.: The sensitivity of ozone to nitrogen oxides and hydrocarbons in regional ozone episodes, *J. Geophys. Res.-Atmos.*, 95, 1837–1851, 1990.
- Sim, S., Choi, S., Jung, D., Woo, J., Kim, N., Park, S., Kim, H., Jeong, U., Hong, H., and Han, K.-S.: Retrieval pseudo BRDF-adjusted surface reflectance at 440 nm from Geostationary Environmental Monitoring Spectrometer (GEMS), *EGUsphere* [preprint], <https://doi.org/10.5194/egusphere-2024-601>, 2024.
- 1030 Solomon, S.: Stratospheric ozone depletion: A review of concepts and history, *Rev. Geophys.*, 37, 275–316, 1999.
- Spurr, R. J.: VLIDORT: A linearized pseudo-spherical vector discrete ordinate radiative transfer code for forward model and retrieval studies in multilayer multiple scattering media, *J. Quant. Spectrosc. Radiat. Transf.*, 102, 316–342, 2006.
- 1035 Thalman, R. and Volkamer, R.: Temperature dependent absorption cross-sections of O<sub>2</sub>-O<sub>2</sub> collision pairs between 340 and 630 nm and at atmospherically relevant pressure, *Phys. Chem. Chem. Phys.*, 15, 15371–15381, 2013.
- Tilstra, L. G., Tuinder, O. N. E., Wang, P., and Stammes, P.: Surface reflectivity climatologies from UV to NIR determined from Earth observations by GOME-2 and SCIAMACHY, *J. Geophys. Res.-Atmos.*, 122, 4084–4111, <https://doi.org/10.1002/2016JD025940>, 2017.
- Tilstra, L. G., de Graaf, M., Trees, V., Litvinov, P., Dubovik, O., and Stammes, P.: A directional surface reflectance climatology determined from TROPOMI observations, *Atmos. Meas. Tech. Discuss.* [preprint], <https://doi.org/10.5194/amt-2023-222>, in review, 2023.
- 1040 Vandaele, A. C., Hermans, C., Fally, S., Carleer, M., Colin, R., Merienne, M.-F., Jenouvrier, A., and Coquart, B.: High resolution Fourier transform measurement of the NO<sub>2</sub> visible and near-infrared absorption cross sections: Temperature and pressure effects, *J. Geophys. Res.-Atmos.*, 107, <https://doi.org/10.1029/2001JD000971>, 2002.
- Veeffkind, J., Aben, I., McMullan, K., Förster, H., De Vries, J., Otter, G., Claas, J., Eskes, H., De Haan, J., Kleipool, Q., van Weele, M., 1045 Hasekamp, O., Hoogeveen, R., Landgraf, J., Snel, R., Tol, P., Ingmann, P., Voors, R., Kruizinga, B., Vink, R., Visser, H., and Levelt, P.: TROPOMI on the ESA Sentinel-5 Precursor: A GMES mission for global observations of the atmospheric composition for climate, air quality and ozone layer applications, *Remote Sens. Environ.*, 120, 70–83, 2012.
- Vermote, E., Tanré, D., Deuzé, J., Herman, M., Morcrette, J., and Kotchenova, S.: Second simulation of a satellite signal in the solar spectrum-vector (6SV), *6S User Guide Version*, 3, 1–55, 2006.
- 1050 Weng, H., Lin, J., Martin, R., Millet, D. B., Jaeglé, L., Ridley, D., Keller, C., Li, C., Du, M., and Meng, J.: Global high resolution emissions of soil NO<sub>x</sub>, sea salt aerosols, and biogenic volatile organic compounds, *Scientific Data*, 7, 148, <https://doi.org/10.1038/s41597-020-0488-5>, 2020.
- Zara, M., Boersma, K. F., De Smedt, I., Richter, A., Peters, E., van Geffen, J. H. G. M., Beirle, S., Wagner, T., Van Roozendaal, M., Marchenko, S., Lamsal, L. N., and Eskes, H. J.: Improved slant column density retrieval of nitrogen dioxide and formaldehyde for OMI and GOME-2A from QA4ECV: intercomparison, uncertainty characterisation, and trends, *Atmos. Meas. Tech.*, 11, 4033–4058, <https://doi.org/10.5194/amt-11-4033-2018>, 2018.
- 1055

- Zhang, Y., Lin, J., Kim, J., Lee, H., Park, J., Hong, H., Van Roozendaal, M., Hendrick, F., Wang, T., Wang, P., He, Q., Qin, K., Choi, Y., Kanaya, Y., Xu, J., Xie, P., Tian, X., Zhang, S., Wang, S., Cheng, S., Cheng, X., Ma, J., Wagner, T., Spurr, R., Chen, L., Kong, H., and Liu, M.: A research product for tropospheric NO<sub>2</sub> columns from Geostationary Environment Monitoring Spectrometer based on Peking University OMI NO<sub>2</sub> algorithm, *Atmos. Meas. Tech.*, 16, 4643–4665, <https://doi.org/10.5194/amt-16-4643-2023>, 2023.
- 1060 Zhao, S., Yu, Y., Yin, D., He, J., Liu, N., Qu, J., and Xiao, J.: Annual and diurnal variations of gaseous and particulate pollutants in 31 provincial capital cities based on in situ air quality monitoring data from China National Environmental Monitoring Center, *Environ. Int.*, 86, 92–106, <https://doi.org/10.1016/j.envint.2015.11.003>, 2016.
- Zoogman, P., Liu, X., Suleiman, R., Pennington, W., Flittner, D., Al-Saadi, J., Hilton, B., Nicks, D., Newchurch, M., Carr, J., Janz, S., Andraschko, M., Arola, A., Baker, B., Canova, B., Chan Miller, C., Cohen, R., Davis, J., Dussault, M., Edwards, D., Fishman, J., Ghulam, A., González Abad, G., Grutter, M., Herman, J., Houck, J., Jacob, D., Joiner, J., Kerridge, B., Kim, J., Krotkov, N., Lamsal, L., Li, C., Lindfors, A., Martin, R., McElroy, C., McLinden, C., Natraj, V., Neil, D., Nowlan, C., O’Sullivan, E., Palmer, P., Pierce, R., Pippin, M., Saiz-Lopez, A., Spurr, R., Szykman, J., Torres, O., Veeffkind, J., Veihelmann, B., Wang, H., Wang, J., and Chance, K.: Tropospheric emissions: Monitoring of pollution (TEMPO), *Journal of Quantitative Spectroscopy and Radiative Transfer*, 186, 17–39, <https://doi.org/https://doi.org/10.1016/j.jqsrt.2016.05.008>, satellite Remote Sensing and Spectroscopy: Joint ACE-Odin Meeting, October 2015, 2017.
- 1065
- 1070