

# Supplement to: *The 2022 Drought Needs to be a Turning Point for European Drought Risk Management*

**Riccardo Biella**<sup>1,2</sup>, Anastasiya Shyroka<sup>1,2</sup>, Monica Ionita<sup>3,4</sup>, Raffaele Vignola<sup>5,6</sup>, Samuel Sutanto<sup>7</sup>, Andrijana Todorovic<sup>8</sup>, Claudia Teutschbein<sup>1,2</sup>, Daniela Cid<sup>9,10</sup>, Maria Carmen Llasat<sup>11,12</sup>, Pedro Alencar<sup>13</sup>, Alessia Matanó<sup>14</sup>, Elena Ridolfi<sup>15</sup>, Benedetta Moccia<sup>15</sup>, Ilias Pechlivanidis<sup>16</sup>, Anne van Loon<sup>13</sup>, Doris Wendt<sup>17</sup>, Elin Stenfors<sup>1,2</sup>, Fabio Russo<sup>14</sup>, Jean-Philippe Vidal<sup>18</sup>, Lucy Barker<sup>19</sup>, Mariana Madruga de Brito<sup>20</sup>, Marleen Lam<sup>21</sup>, Monika Bláhová<sup>22,23</sup>, Patricia Trambauer<sup>24</sup>, Raed Hamed<sup>13</sup>, Scott J. McGrane<sup>25,26</sup>, Serena Ceola<sup>27</sup>, Sigrid J. Bakke<sup>28</sup>, Svitlana Krakovska<sup>29,30</sup>, Viorica Nagavciuc<sup>3,4</sup>, Faranak Tootoonchi<sup>31</sup>, Giuliano Di Baldassarre<sup>1,2</sup>, Sandra Hauswirth<sup>32</sup>, Shreedhar Maskey<sup>33</sup>, Svitlana Zubkovich<sup>2</sup>, Marthe Wens<sup>13</sup>, Lena M Tallaksen<sup>34</sup>

- 1 Centre of Natural Hazards and Disaster Science, Uppsala, Sweden  
2 Department of Earth Sciences, Uppsala University, Uppsala, Sweden  
15 3 Paleoclimate Dynamics Group, Alfred Wegener Institute Helmholtz Center for Polar and Marine Research, 27570 Bremerhaven, Germany  
4 Forest Biometrics Laboratory – Faculty of Forestry, "Ștefan cel Mare" University of Suceava, Universității street, no.13, 720229, Suceava, România  
5 Water System and Global Change, Wageningen University and Research, Wageningen, the Netherlands  
20 6 Gund Institute for the Environment, Vermont University, USA  
7 Earth Systems and Global Change, Wageningen University and Research, Wageningen, the Netherlands  
8 University of Belgrade, Faculty of Civil Engineering, Institute for Hydraulic and Environmental Engineering  
9 Department of Civil and Environmental Engineering, Universitat Politècnica de Catalunya, Spain  
10 Hydrogeology Group (UPC-CSIC), Spain  
25 11 Department of Applied Physics, University of Barcelona, Spain  
12 IdRA, Water Research Institut, University of Barcelona, Spain  
13 Chair of Ecohydrology, Technical University of Berlin, Germany  
14 Institute for Environmental Studies (IVM), Vrije Universiteit Amsterdam, The Netherlands  
15 Dipartimento di Ingegneria Civile, Edile e Ambientale, Università degli Studi di Roma La Sapienza, 00184 Roma, Italy  
30 16 Swedish Meteorological and Hydrological Institute, Norrköping, Sweden  
17 Cabot Institute for the Environment, Bristol, UK  
18 INRAE, RiverLy, Villeurbanne, France  
19 UK Centre for Ecology & Hydrology, Wallingford, United Kingdom  
20 Department of Urban and Environmental Sociology, Helmholtz Centre for Environmental Research, Leipzig, Germany  
35 21 Water Resources Management (WRM), Wageningen University & Research (WUR), Wageningen, the Netherlands  
22 Global Change Research Institute CAS, Brno, Czech Republic  
23 Mendel University in Brno, Brno, Czech Republic  
24 Deltares, The Netherlands  
25 Department of Economics, Strathclyde Business School, University of Strathclyde, Glasgow  
40 26 Applied Physics Department, Stanford University, CA, USA  
27 Department of Civil, Chemical, Environmental and Materials Engineering, Alma Mater Studiorum Università di Bologna, Bologna, Italy  
28 Norwegian water and energy directorate, Oslo, Norway  
29 Ukrainian Hydrometeorological Institute, Kyiv, Ukraine  
45 30 National Antarctic Scientific Center, Kyiv, Ukraine

31 Department of crop production ecology, Swedish university of agricultural sciences, Uppsala, Sweden  
32 Department of Physical Geography, Faculty of Geosciences, Utrecht University, Utrecht, the Netherlands  
33 IHE Delft Institute for Water Education, Delft, the Netherlands  
34 Department of Geosciences, University of Oslo, Oslo, Norway

50 *Correspondence to:* Riccardo Biella (riccardo.biella@geo.uu.se)

## **Abstract**

The 2022 European drought has underscored critical deficiencies in European water management. This paper delves into these shortcomings and suggests a way forward for European drought risk management using a Europe-wide survey among water managers involved in the 2022 event. Information from the survey is enriched with climate-related information to offer a  
55 comprehensive overview of drought risk management in Europe. Our research focuses on four key aspects: the increasing risk of drought, its spatial and temporal impacts, current drought risk management approaches, and the evolution of drought risk management across the continent.

Our findings reveal a consensus on the growing risk of drought, which is confounded by the rising frequency and intensity of droughts. While the 2022 event affected most of the continent, our findings show significant regional disparities in drought  
60 risk management capacity among the various countries. Our analysis indicates that current drought risk management measures often rely on short-term operational concerns, particularly in agriculture-dominated economies, leading to potentially maladaptive practices. Finally, the study clearly shows an overall positive trend in drought risk management, with organizations showing increased awareness and preparedness. Still, our results also show awareness growing faster than preparedness, indicating how this crisis can be the ideal moment to mainstream European-wide drought risk management.

65 The study stresses the need for continent-wide coordination in drought risk management. Consequently, we advocate for a European Drought Directive, to harmonize and enforce drought risk management policies across the continent. This directive should promote a systemic, integrated, and long-term risk management perspective. Key principles should include managing drought risk holistically, recognizing droughts as continuous and systemic events, and prioritizing environmental sustainability and water demand reduction. The directive should also set clear guidelines for drought risk management at the national level  
70 and for cross-boundary drought collaboration.

This study and its companion paper *The 2022 Drought Shows the Importance of Preparedness in European Drought Risk Management* are the result of a study carried out by the Drought in the Anthropocene (DitA) network.

## **S1. Questionnaire**

### **S1.1 Content of the questionnaire**

75

---

Impacts and response during the 2022 European drought - questionnaire

Over the span of just five years, Europe has been hit by two major drought events, the 2018-2019 drought, and 2022 drought which is still ongoing in parts of Europe. In particular, the latter has been reported as being the worst drought hitting the

continent in 500 years. While drought risk has risen on the agenda in many European countries, Europe is still largely unprepared to manage severe, spatially large and recurring drought events with no European-wide drought management schemes in place.

The Panta Rhei Drought in the Anthropocene working group is an interdisciplinary organization of researchers investigating drought impact and management. This questionnaire was devised to collect information from water managers and managers of drought-affected sectors that can be used to further our knowledge of drought impact and management from a European perspective. With your collaboration you will be contributing to the advancement of the knowledge on drought in Europe. By responding to this questionnaire you are giving your consent to use this data for scientific purpose. Please, take 15 minutes of your time to answer to this questionnaire.

---

1. What type of organization do you belong to? \_\_\_\_\_
2. At which level does your organization operate?
3. In which country is your organization located?
4. In which municipality/region do you operate (name, region, country)?
- 5.a. How does your organization identify that drought is happening?
- Based on analysis of indices (e.g. SPEI; SPI...)
  - Based on observed impact
  - Based on external reporting (e.g. bulletin from the meteorological service)
  - Based on internal reporting
  - My organization doesn't have a systematic way to define it
  - I don't know
- 5.b. Does your organization use a forecasting system?
- Yes, seasonal forecast (1-7 months)
  - Yes, sub-seasonal (0-5 weeks)
  - Yes, both seasonal and sub-seasonal
  - No
  - I don't know

---

#### I. Impacted sectors

The following questions regard the sectors which are present in your area of operations, or that your organization manages directly. For multiple choice questions, you can leave the non-relevant sectors empty.

6. Which sectors does your organization operate in?
- Agriculture and Livestock Farming
  - Forestry
  - Freshwater Aquaculture and Fisheries
  - Energy and Industry
  - Waterborne transportation
  - Tourism and Recreation
  - Public Water Supply
  - Water Quality
  - Freshwater ecosystems: habitats, plants and wildlife
  - Terrestrial ecosystems: habitats, plants and wildlife
  - Soil system
  - Wildfires

- Air quality
- 130 · Human health and public safety
- Conflicts
- Other

135 7. How severe was the impact of the 2022 drought on a scale from 1 (Not affected) to 5 (Severe)?

- 140 8. How severe was the impact of the 2022 drought compared to the 2018-2019 drought event?
- Less severe
  - Same
  - More severe
  - I so not know
  - Not relevant

145 9. When was the impact first seen (month)?

- Before March 2022
- March 2022
- April 2022
- May 2022
- June 2022
- 150 · July 2022
- August 2022

10. Which sectors were prioritized in the distribution of water resources?

- Low priority
- 155 · Medium Priority
- High priority
- I do not know

---

## II. Cascading hazards

160 Sometimes, droughts can trigger other related hazards. You can leave the non-relevant hazards empty.

11. Have you observed any other hazard connected to the drought? When did it take place compared to the start of the drought?

- Coastal flooding
- Heavy rains
- 165 · Cold spell
- Disease outbreak
- Hail
- Heatwave
- Landslides
- 170 · Riverine flooding
- Smog
- Strong winds
- Wildfires

175 11.a. Write here if you observed hazards which are not on the list (optional)

---

## III. Drought management

180 Drought management measures are aimed at mitigating drought risk or impact. These measures can be both proactive (if taken before the onset of the drought) or reactive (if taken after the onset). One example of drought management measure taken is the reduction of output of a power plant to reduce the temperature in the cooling tower due scarcity of cooling water.

12. What were the main measures taken by your organization?

185 13. When did your organization take measures to mitigate the impact of the 2022 drought?

14. How effective were the measures taken?

- Very effective
- Not effective
- I do not know
- 190 · Not relevant

---

#### IV. Drought management plan

195 A drought management plan is a framework for enacting drought management within an organization. This can either be specific for drought, or drought can be one of the risks present in a multi-hazard plan. Plans can be either designed for short-term response to drought, or management strategies aimed at making the organization more resilient to drought in the long term.

15. Does your organization have a drought management plan or a contingency plan for droughts both for the short-term response and the long-term (multi-year) management?

- 200 · Yes, both short-term response and long-term management plans
- Yes, only short-term response plan
- Yes, only long-term management plan
- No, we do not have either
- I don't know

205

16. Has your organization introduced or updated its drought management plan and/or contingency plan since 2018?

- Yes, both plans have been introduced after 2018
- Yes, only short-term response plan has been introduced after 2018
- Yes, only long-term management plan has been introduced after 2018
- 210 · No, we already had both plans before 2018
- No, we do not have any plan
- I don't know

---

#### V. Drought risk

215 Drought risk is the likelihood that a drought will cause damage and losses. It depends on the interactions between the severity of the drought event and how much society and the environment are susceptible and exposed to said drought.

17. Compared to the 2018-2019 drought, your organization was...

- (More , same , less , I do not know)
- 220 · Aware
- Prepared
- Effective in the response

225 18. Do you think that the risk posed by droughts is...

- Increasing
- Unchanged
- Decreasing

· I do not know

230 18.a. Elaborate (optional)

19. Do you expect the drought to become a more significant risk to manage for your organization in the future?

· Yes

· No

235 · I do not know

19.a. If yes, how is drought management changing in your organization (optional)

20. Please, leave us your email if you want to receive updates on the development of the research.

240

Thank you for your contribution!

---

## **S1.2. Links to questionnaires**

Below are listed the links to the questionnaires that were created in all the available languages.

245 English:

<https://docs.google.com/forms/d/e/1FAIpQLSeomRgskDrjK1WBYaMSWvGudv7ZhcDFnkHk5vGAfEWohy3FQ/viewform?usp=sharing>

German:

250 [https://docs.google.com/forms/d/e/1FAIpQLScy3fTctPfb9KPlj6iHj6o\\_wXqyd5hGtU2orJ9X1QvEcuVvbg/viewform?usp=sharing](https://docs.google.com/forms/d/e/1FAIpQLScy3fTctPfb9KPlj6iHj6o_wXqyd5hGtU2orJ9X1QvEcuVvbg/viewform?usp=sharing)

Italian:

<https://docs.google.com/forms/d/e/1FAIpQLScy6IcBFfodRK8vePD0A1eYBOIaVcfTPO63QHgyr2PzAkhbtA/viewform?usp=sharing>

Dutch (NL):

255 <https://docs.google.com/forms/d/e/1FAIpQLScT2dUAV36-IPb3WO0vbmakJGsGIkT9o9rMzl-rsENw8Th-Qw/viewform?usp=sharing>

Ukrainian:

260 <https://docs.google.com/forms/d/e/1FAIpQLSfIGvSapTqRi80sd9TfTNvd1ED2I9jSp4jnLxn4BoAYtxCO3A/viewform?usp=sharing>

Hungarian:

[https://docs.google.com/forms/d/e/1FAIpQLSd0Gbve5mjHT2U\\_3bZoTuohvGUBcr7dgr6g\\_vRUIm-OsWwbQ/viewform?usp=sharing](https://docs.google.com/forms/d/e/1FAIpQLSd0Gbve5mjHT2U_3bZoTuohvGUBcr7dgr6g_vRUIm-OsWwbQ/viewform?usp=sharing)

Turkish:

265 [https://docs.google.com/forms/d/e/1FAIpQLSdKlcdVYBjcX0l4zfoRaf3ejTx3rmm1q0xN5WSbV3\\_ehRYKeA/viewform?usp=sharing](https://docs.google.com/forms/d/e/1FAIpQLSdKlcdVYBjcX0l4zfoRaf3ejTx3rmm1q0xN5WSbV3_ehRYKeA/viewform?usp=sharing)

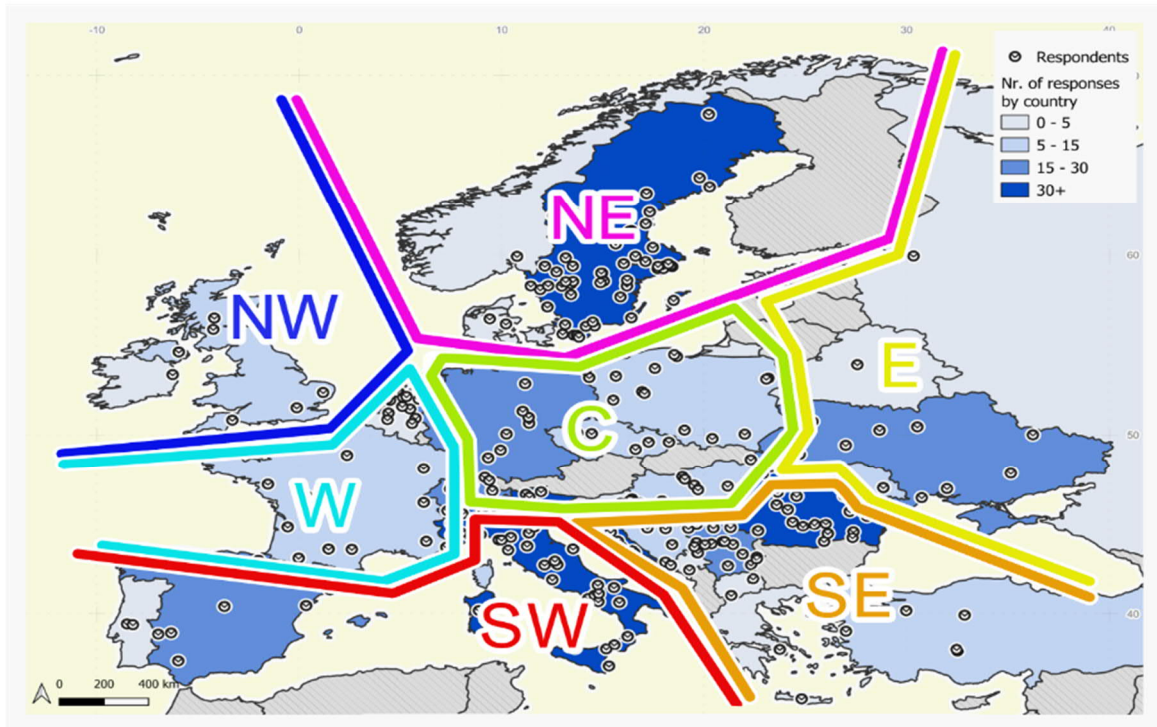
Portuguese:

[https://docs.google.com/forms/d/e/1FAIpQLSec3lOpMSG0qSQS\\_Cp4fwI3VIUhp-IQ7Tm7JAwpoMSa3Dadew/viewform?usp=sharing](https://docs.google.com/forms/d/e/1FAIpQLSec3lOpMSG0qSQS_Cp4fwI3VIUhp-IQ7Tm7JAwpoMSa3Dadew/viewform?usp=sharing)

- 270 French:  
<https://docs.google.com/forms/d/e/1FAIpQLScIjfR63i1Fy7cxMctX--icI Rdc2Cx B3aWOVox2ynGAM4L-bQ/viewform?usp=sharing>
- Polish:  
<https://docs.google.com/forms/d/e/1FAIpQLSd3VU7k5ImWaNf4VQP8v7h5MKbqsis0n-KJzccK7Zr3MZbCcA/viewform?usp=sharing>
- 275 Spanish:  
<https://docs.google.com/forms/d/e/1FAIpQLSd3VU7k5ImWaNf4VQP8v7h5MKbqsis0n-KJzccK7Zr3MZbCcA/viewform?usp=sharing>
- Swedish:  
280 [https://docs.google.com/forms/d/e/1FAIpQLSfWdMLtuI3gzHm9MvrGuc6tw4E5A0RYhkjdIpoRoyU\\_6tKGgg/viewform?usp=sharing](https://docs.google.com/forms/d/e/1FAIpQLSfWdMLtuI3gzHm9MvrGuc6tw4E5A0RYhkjdIpoRoyU_6tKGgg/viewform?usp=sharing)
- Romanian:  
[https://docs.google.com/forms/d/e/1FAIpQLSfMyCX1Fyp\\_fY6guwMAPGX4n1Dn4t4j0v1e1JYvvZcZXxFABw/viewform?usp=sharing](https://docs.google.com/forms/d/e/1FAIpQLSfMyCX1Fyp_fY6guwMAPGX4n1Dn4t4j0v1e1JYvvZcZXxFABw/viewform?usp=sharing)
- 285 Czech:  
[https://docs.google.com/forms/d/e/1FAIpQLSfMyCX1Fyp\\_fY6guwMAPGX4n1Dn4t4j0v1e1JYvvZcZXxFABw/viewform?usp=sharing](https://docs.google.com/forms/d/e/1FAIpQLSfMyCX1Fyp_fY6guwMAPGX4n1Dn4t4j0v1e1JYvvZcZXxFABw/viewform?usp=sharing)
- Croatian, Bosnian, and Montenegrin:  
[https://docs.google.com/forms/d/e/1FAIpQLSfMyCX1Fyp\\_fY6guwMAPGX4n1Dn4t4j0v1e1JYvvZcZXxFABw/viewform?usp=sharing](https://docs.google.com/forms/d/e/1FAIpQLSfMyCX1Fyp_fY6guwMAPGX4n1Dn4t4j0v1e1JYvvZcZXxFABw/viewform?usp=sharing)
- 290 Russian:  
<https://docs.google.com/forms/d/e/1FAIpQLSdpp-NnENqs0Kzk-rH3jZr-UJaBsHLnJUf0BK8BzOEwqQWrUA/viewform?usp=sharing>
- Serbian:  
295 <https://docs.google.com/forms/d/e/1FAIpQLSdpp-NnENqs0Kzk-rH3jZr-UJaBsHLnJUf0BK8BzOEwqQWrUA/viewform?usp=sharing>

## **S2. Overview of the responders**

## European regions as defined in this study



**Figure S1** – European regions as defined by this study. The regions are adapted from those used in The World Factbook. The only difference being that Southern Europe instead being divided in three parts (i.e. SW, S, and SE), is divided in only two, with Italy, Vatican and San Marino, being grouped with the SW region and Greece and Cyprus with the SE region.

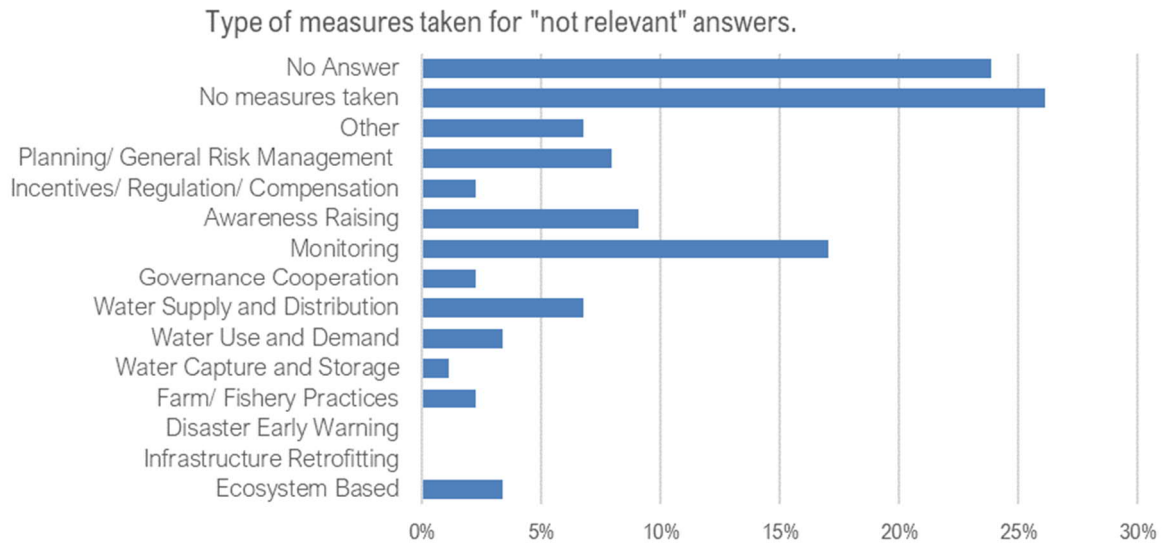


**Table S1** – List of countries represented by the responders to the questionnaire, the corresponding country code, English country names, the corresponding European Regions (according to this study, see Fig S1 for explanation of regions), and the number of responses for each region and country.

305

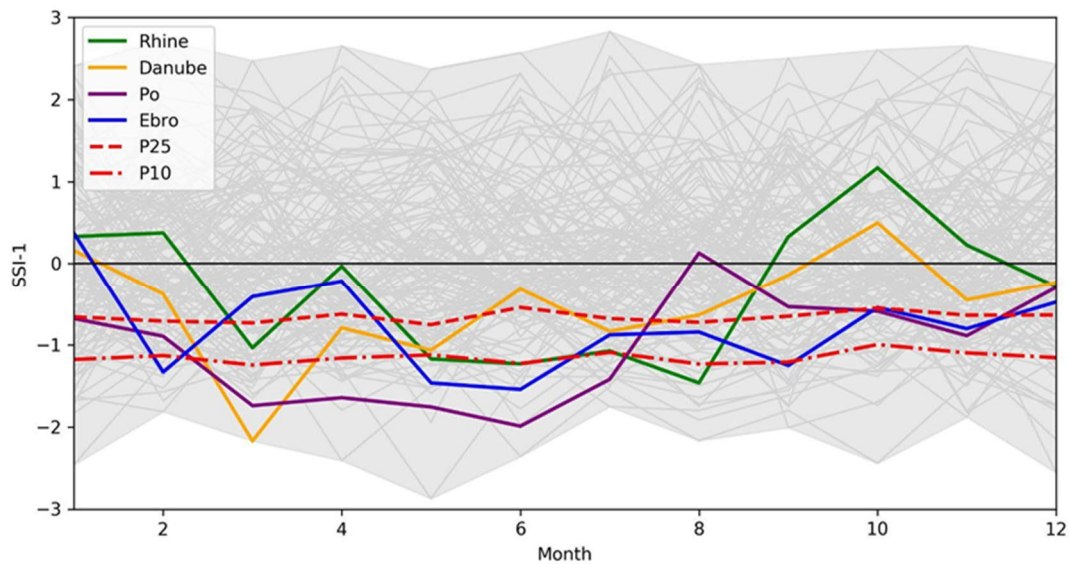
310

Country/ Region			Country/ Region		
Code	Name	N	Code	Name	N
NW	North Western Europe				17
	IE	Ireland			3
	UK	United Kingdom			14
C	Total				74
	CH	Switzerland			16
	CZ	Czechia			7
	DE	Germany			24
	HU	Hungary			11
	PL	Poland			15
	SI	Slovenia			1
W	Western Europe				47
	BE	Belgium			4
	FR	France			15
	NL	Netherlands			28
SW	South Western Europe				110
	ES	Spain			19
	IT	Italy			87
	PT	Portugal			4
NE	Total				61
	DK	Denmark			3
	NO	Norway			2
	SE	Sweden			56
E	Eastern Europe				38
	BLR	Belarus			5
	MD	Moldova			7
	RU	Russia			1
	UA	Ukraine			25
SE	South Eastern Europe				131
	BIH	Bosnia Herzegovina			7
	GR	Greece			3
	HR	Croatia			44
	ME	Montenegro			1
	NMK	N. Macedonia			2
	RO	Romania			35
	RS	Serbia			29
	TR	Turkey			10
			Europe (total)		481



**Figure S2** – Type of measures taken by the respondents who selected their measures to be “not relevant” in question 14 of the questionnaire. The type of measure taken is reported in the answer to question 13.

### S3. Drought impact on streamflow



**Figure S3** - Streamflow droughts derived from the Standardized Streamflow Index (SSI-1) for Rhine (close to Lobith), Danube (close to Hungary), Po (close to Ferrara), and Ebro (close to Zaragoza) rivers in year 2022. The 10th and 25th percentiles (P10 and P25, respectively) were calculated from all SSI-1 values of these selected rivers depicted in grey shaded area (1991-2022).

315 **S4. Drought risk management measures**

320 **Table S2** – Agreement between the classification of the measures taken by the respondents as classified according to the typology by Reckien et al. (2023). The initial information was collected as an open question. Responses were translated from the original languages to English. The classification was carried out by two researchers. Agreement between the two researchers was then calculated. Agreement by row means that the two researchers indicated the same typology of measures for one response. This can include multiple types of measures. Agreement by cell indicates that the same type of measure was identified individually. For example, if researcher 1 classified a response as: “nature based”; “Agricultural practices”; Demand-side reduction”, and researcher 2 only as “Agricultural practices”; Demand-side reduction”, this would not be an agreement by row, yet it would be two agreements and one disagreement by cell.

	Total	Agreed	Disagreed		Agreement
			Type I	Type II	
Rows	20	14	6		70%
Cells	59	51	3	5	86%

325 **Table S3** – Effectiveness of the measures taken by the respondent’s organization as reported in question 14 of the survey. The values 1 to 5 on a scale from “not effective” to “very effective” respectively, “I don’t know”, “not relevant”, and the option to leave the question blank. The column “N valid” indicates the number of valid answers, meaning it excludes “Don’t know”, “not relevant” and “NA”. The column “Mean” indicates the average effectiveness for said subgroup.

Category	Group	N	N valid	Mean eff	1 (not eff.)	2	3	4	5 (very eff.)	Don't know	Not relevant	#N/A	
Organization type	Other	24	16	3,6		4	3	4	5	2	3	3	
	NGO	19	14	2,6	3	4	4	1	2	1	2	2	
	Sci	34	11	3,2	1	1	4	5		4	9	10	
	Private	37	26	3,5	2	3	7	8	6	3	7	1	
	Public	366	204	3,5	10	21	68	70	35	53	67	42	
Organization level	Internat.	37	20	3,6	1	2	5	8	4	2	7	8	
	Nation.	130	67	3,3	7	6	25	20	9	23	22	18	
	Region.	312	183	3,5	8	24	57	59	35	38	29	62	
Country with 10+ responses (by region)	SW	ES	19	15	3,7	1		4	7	3	1	1	2
		IT	87	70	3,6	2	9	22	19	18	4	6	7
	SE	HR	44	19	3,0	4	2	6	4	3	8	11	6
		RS	29	21	3,4	1	3	6	9	2	1	4	3
		RO	35	19	3,3	2	3	5	5	4	8	5	3
		TR	10	5	2,8		2	2	1		3	1	1
	E	UA	25	6	3,2		2	2	1	1	8	4	7
	C	PL	15	6	2,7	1	1	3	1			6	3
		HU	11	7	3,3	1		3	2	1		2	2
		DE	24	13	3,2		5	2	5	1	2	6	3
		CH	16	9	3,7		1	3	3	2	2	3	2
	W	NL	28	22	3,7		1	7	11	3	3	1	2
		FR	15	12	3,7		1	5	3	3		1	2
NW	UK	14	10	3,4		1	6	1	2	2	2		

	NE	SE	56	10	4,0			2	6	2	12	24	10
Regional average	SW	110	89	3,6	3	9	27	29	21	5	7	9	
	SE	131	70	3,3	7	10	20	22	11	24	23	14	
	E	38	14	2,9	3	2	4	3	2	10	5	9	
	C	74	38	3,2	3	7	12	12	4	5	21	10	
	W	47	37	3,6		4	13	14	6	3	2	5	
	NW	17	10	3,4		1	6	1	2	3	3	1	
	NE	61	12	3,8			4	6	2	13	26	10	
All	Europe	478	244	3,5	12	31	78	78	45	54	77	53	

## S5. Changes in drought risk management

330 **Table S4** – Changes in awareness, preparedness, and effectiveness in the response between 2018 and 2022 according to the respondents of the survey. The respondents could answer more, same, or less to the three questions “How aware/prepared/effective was your organization in 2022 compared to 2018?”. The option “I don’t know” and the possibility to leave the question blank (i.e. “#N/A”) were also available. The results are presented at the European level (i.e. all responses), country level, regional level, operational level, and type of organization.

Group		AWARENESS					PREPAREDNESS					EFFECTIVENESS				
		More	Same	Less	I don't know	#N/A	More	Same	Less	I don't know	#N/A	More	Same	Less	I don't know	#N/A
Europe		232	141	13	46	49	141	160	22	86	72	134	155	25	94	73
Country	BE	2	2				3	1				1	1		1	1
	BIH	4	2			1	2	2	1	1	1	2	4	1		
	BLR	2	1		2		1	2		1	1	1	2		1	1
	CH	7	8		1		7	8		1		4	9	1	2	
	CZ	3	3		1		1	4		2		1	2		4	
	DE	9	9		1	5	8	10		2	4	7	10		2	5
	DK	1	2					3					3			
	ES	11	8				9	8			2	8	8			3
	FR	9	6				5	8	1	1		6	7	1	1	
	GR	2	1				3					2	1			
	HR	19	11	3	5	6	9	16	3	4	12	13	13	3	5	10
	HU	6	3			2	5	4			2	4	4	1		2
	IE	2			1		1			2		1			2	
	IT	42	31	2	6	6	39	30	1	7	10	39	29	1	9	9

	MD	1	2		1	3	1	1	1	1	3	1	3		1	2
	ME		1					1					1			
	NL	22	4		1	1	19	7		1	1	16	8		2	2
	NMK				2					2					2	
	NO		2				1	1				1	1			
	PL	5	9			1	1	9		1	4	1	9		1	4
	PT	2	2				2	2				2	2			
	RO	9	10		7	9	5	11		7	12	4	9	1	7	14
	RS	9	12	2	1	5	5	11	2	2	9	5	12	1	3	8
	RU	1									1					1
	SE	42			14		1	3	6	46		2	1	7	46	
	SI	1					1					1				
	TR	8	1	1			4	4	2			4	4	2		
	UA	5	6	3	2	9	3	7	4	3	8	1	7	4	3	10
	UK	8	3	2	1		5	6	1	2		6	4	2	2	
Region	SW	55	41	2	6	6	50	40	1	7	12	49	39	1	9	12
	SE	51	38	6	15	21	28	45	8	16	34	30	44	8	17	32
	E	9	9	3	5	12	5	10	5	5	13	3	12	4	5	14
	C	31	32		3	8	23	35		6	10	18	34	2	9	11
	W	33	12		1	1	27	16	1	2	1	23	16	1	4	3
	NW	10	3	2	2		6	6	1	4		7	4	2	4	
	NE	43	4		14		2	7	6	46		3	5	7	46	
Org. level	Internat.	16	15		1	5	10	20		1	6	12	15		1	9
	National	59	36	4	14	17	39	47	7	17	20	37	46	8	18	21
	Regional	155	90	9	31	27	92	92	15	68	45	85	93	17	75	42
Type of organiz.	NGO	10	5		1	3	5	8	1	1	4	6	6	1	1	5
	Other	11	7	1	2	3	9	8		3	4	10	7	1	2	4
	Private	19	16		1	1	10	21		2	4	12	16		4	5
	Public	176	103	11	39	37	108	110	20	74	54	98	113	22	81	52
	Scientific	15	10	1	3	5	9	12	1	6	6	8	13		6	7