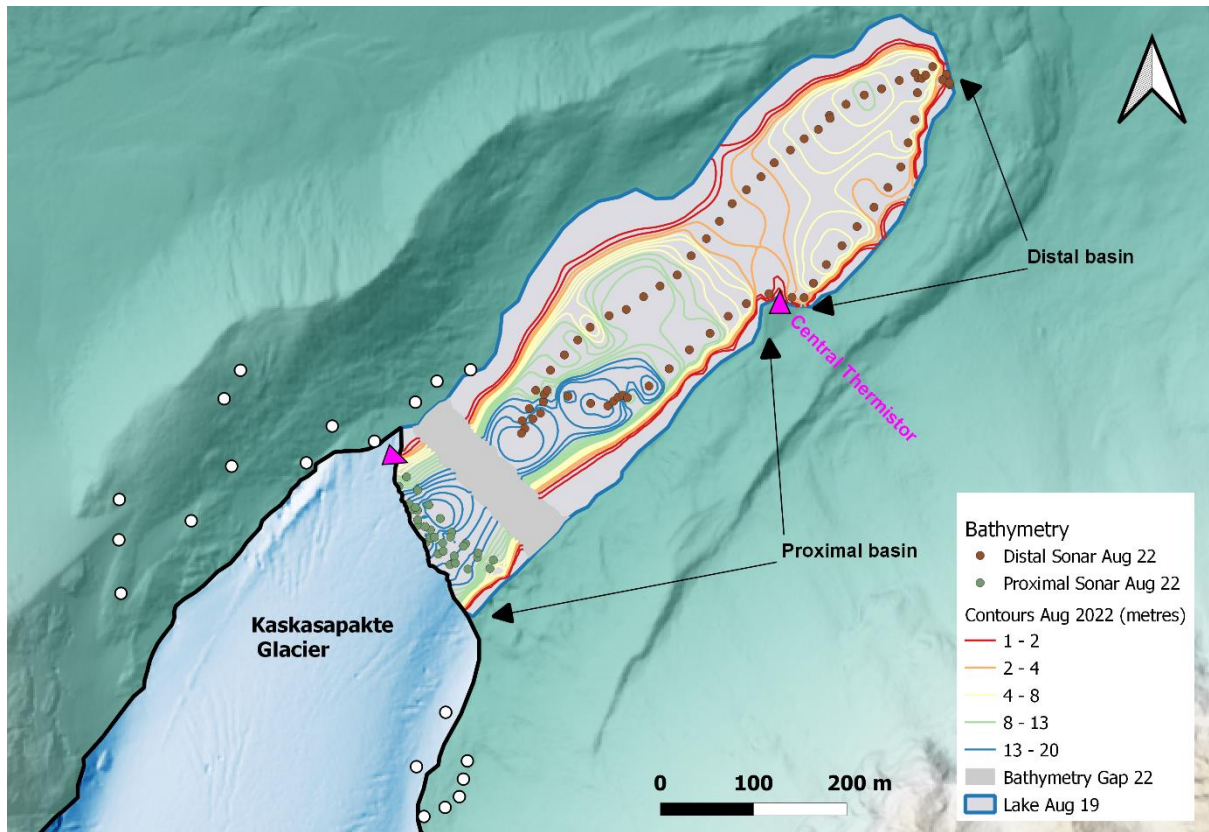


Supplementary



S1 - Digital Elevation model with outline of Kaskasapakte Glacier from 3rd August 2019 and bathymetry from sonar surveys (sampled at 30 seconds) in August 2022. Ground control points (19/8/2019) used for SfM model are shown as white dots. Thermistor positions shown as pink triangles.

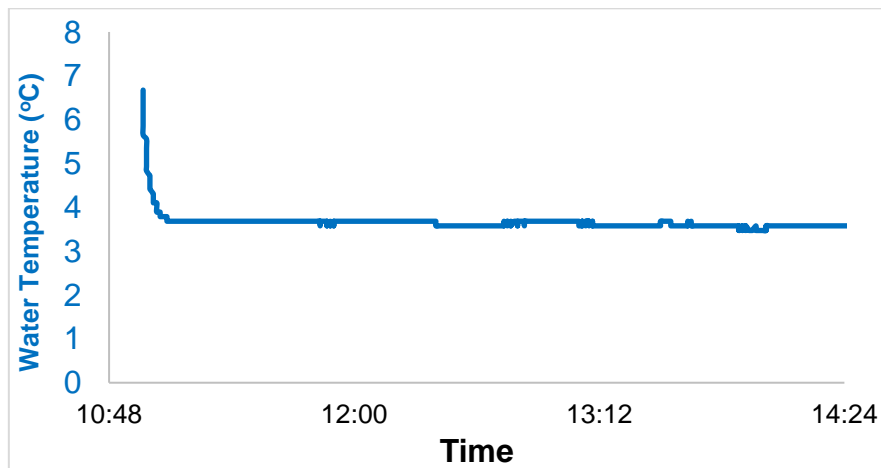
Table 1– Calving classification from July 2017 (observations from 17:43 on 24th July until 14:21 on 28th July). 1 = ice fall; 2 = sheet collapse; 3 = stack topple; 4 = waterline; 5 = subaqueous; 6 = roof/arch collapse; and 7 = unknown

| Date | Time | Calving Class | Notes |
|------------|-------|---------------|-----------------------------|
| 24/07/2017 | 20:50 | 7 | Berg from englacial conduit |
| 24/07/2017 | 20:53 | 7 | Berg from englacial conduit |
| 25/07/2017 | 05:45 | 4 | |
| 25/07/2017 | 16:21 | 7 | Berg from englacial conduit |
| 25/07/2017 | 16:31 | 7 | Berg from englacial conduit |
| 25/07/2017 | 19:27 | 7 | Berg from englacial conduit |
| 26/07/2017 | 00:03 | 4 | |
| 26/07/2017 | 02:03 | 2 | |
| 26/07/2017 | 04:21 | 2 | |
| 26/07/2017 | 09:42 | 2 | |
| 26/07/2017 | 09:42 | 6 | |
| 26/07/2017 | 09:42 | 4 | |
| 26/07/2017 | 10:57 | 6 | |
| 26/07/2017 | 18:34 | 7 | Berg from englacial conduit |
| 26/07/2017 | 19:53 | 7 | Berg from englacial conduit |
| 26/07/2017 | 20:44 | 7 | Berg from englacial conduit |

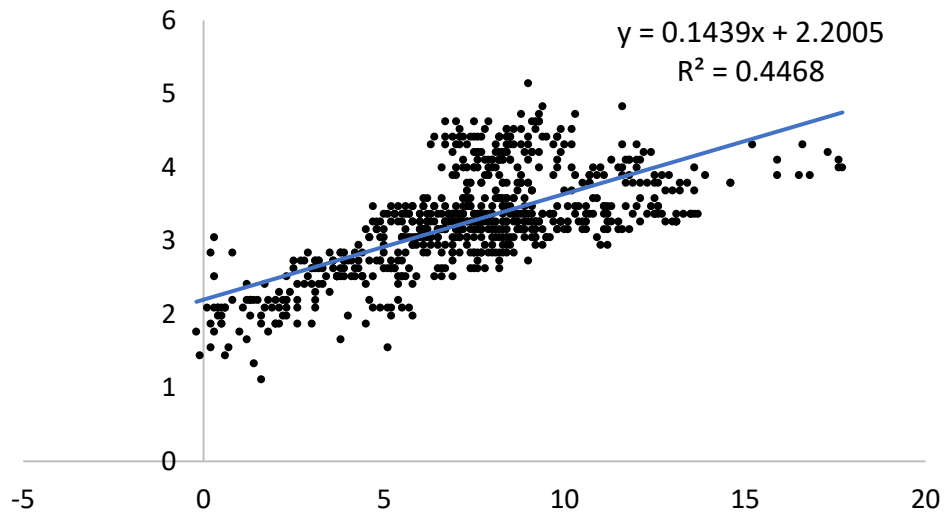
| | | | |
|------------|-------|---|-----------------------------|
| 26/07/2017 | 21:36 | 7 | Berg from englacial conduit |
| 26/07/2017 | 23:29 | 7 | Berg from englacial conduit |
| 27/07/2017 | 16:50 | 7 | Berg from englacial conduit |
| 27/07/2017 | 20:52 | 7 | Berg from englacial conduit |
| 27/07/2017 | 23:59 | 7 | Berg from englacial conduit |
| 28/07/2017 | 11:44 | 7 | Berg from englacial conduit |



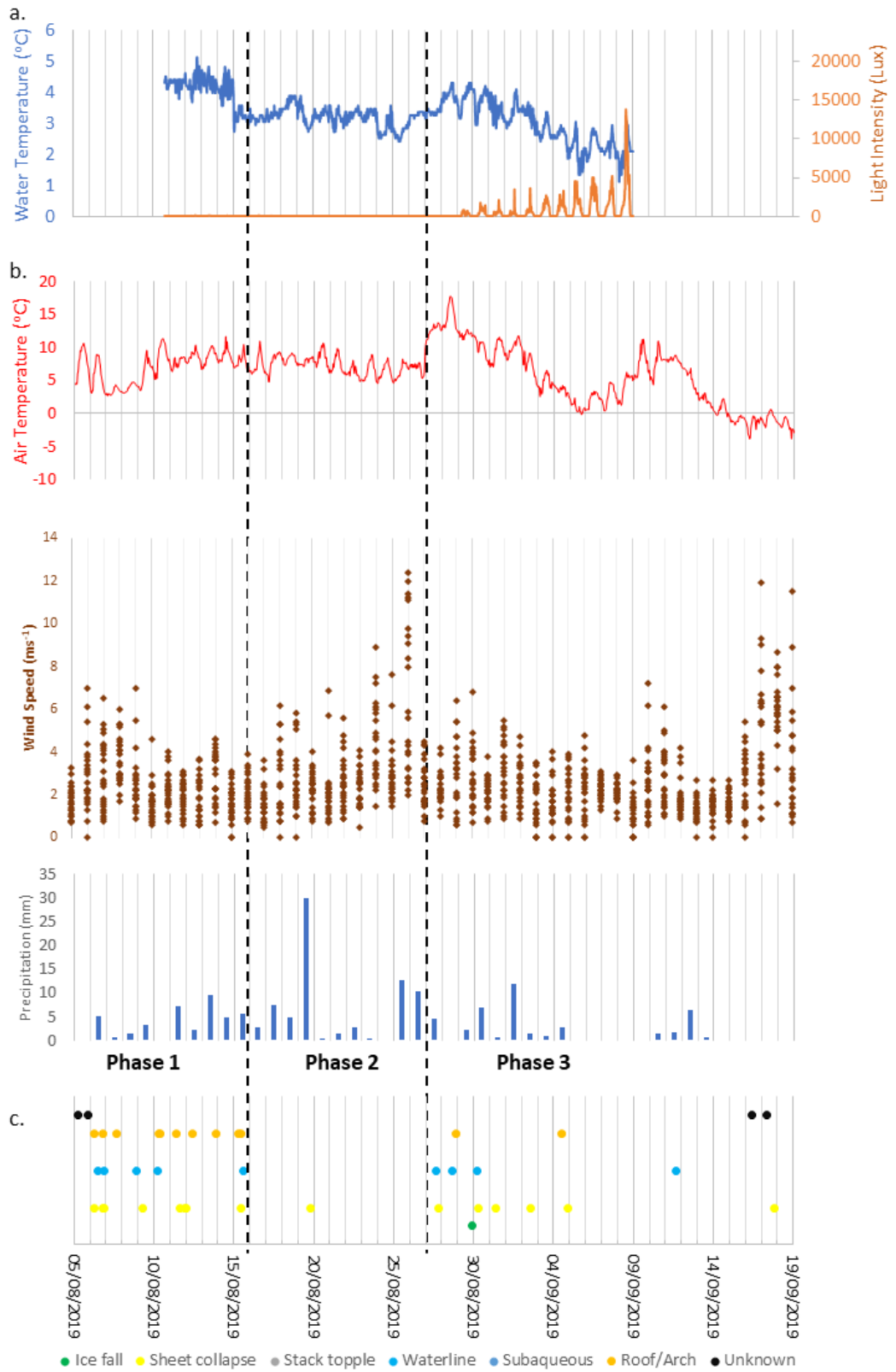
S2 – Image of Kaskasapakte glacier terminus 4th August 2019, taken from western moraine crest on Panasonic Lumix (DMC-TZ57) (focal length 12 mm; exposure time 1/800 sec). Note the water filled crevasse in the lower right of the image (blue circle).



S3 – Water Temperature (+/- 0.5 °C) at 20m depth from temporary cast in front of glacier terminus on 8th August 2019. Note that immersion time was 10:51, with several minutes of sensor settling time afterwards.



S4 – Water temperature from 5m depth at central point in Kaskasapakte lake against 2m air temperature at Tarfala Research Station (SMHI).



S5 – Water temperature (from 5m deep at central part of lake) and hourly air temperature, wind speed and daily precipitation (Tarfala; SMHI) from 5th August to 9th September 2019.