



Warm proglacial lake temperatures and thermal undercutting drives rapid retreat of an Arctic glacier

Adrian Dye^{1, 2}, Robert Bryant³, Francesca Falcini⁴, Joseph Mallalieu⁵, Miles Dimpleby², Michael Beckwith⁶, David Rippin¹ and Nina Kirchner⁷

- 5 ¹ Environment Department, University of York, York, YO10 5NG, United Kingdom
2 Environment Cluster, Teesside University, Middlesbrough, TS1 3BX, United Kingdom
3 Geography Department, University of Sheffield, Sheffield, S3 7ND, United Kingdom
4 Alfred-Wegener-Institut Helmholtz-Zentrum für Polar und Meeresforschung, Bremerhaven, Germany
5 School of Geography, Earth and Environmental Science, University of Birmingham, Birmingham, B15 2TT, United
10 Kingdom
6 Independent Researcher
7 Department of Physical Geography, and Tarfala Research Station, Stockholm University, Stockholm, 106 91, Sweden

Correspondence to: A. Dye (a.dye@tees.ac.uk)

Abstract.

- 15 Determining the characteristics of Arctic proglacial lakes is essential for understanding their current and future influence on glacier mass loss, capacity as a carbon sink and the associated impacts for downstream hydrology and ecology. Here we combine satellite and field observations of Kaskasapakte Glacier (KG) (a lake-terminating glacier in Arctic Sweden) to reveal the interplay between lake parameters and glacier mass loss from 2008-2019. We present the first field evidence of warmer than expected water temperatures (>4 °C at the ice front) at a Scandinavian proglacial lake and illustrate how these drove rapid
20 thermo-erosional undercutting and calving at the terminus, with width averaged retreat rates of up to 23 m per melt year and frontal ablation accounting for 30% of glacier volume loss between 2015 and 2019. Field observations of how proglacial lake properties influence rates of glacier mass loss remain sparse, yet are increasingly critical for the accurate projection of lake-terminating glacier responses to warming air and lake temperatures, particularly in high-latitude Scandinavia under the influence of Arctic amplification.

25

Keywords;

Proglacial Lake, Ice-Marginal Lake, Calving, Arctic Sweden, Arctic Amplification, Glacier Retreat, Sonar

1 Introduction

- Where glacier termini are in contact with proglacial lakes, the latter have been shown to accelerate glacier mass loss rates
30 through thermal and mechanical processes at sites in Alaska, Patagonia, Nepal, Greenland, the Russian Arctic and New Zealand (Skvarca et al., 1995; Warren and Kirkbride, 1998; Roehl et al., 2006; Boyce et al., 2007; King et al., 2017; Minowa et al., 2017; Mallalieu et al., 2021). Proglacial lake temperatures of >4 °C have been reported in Nepal, New Zealand, Patagonia and



Arctic Sweden (Kirkbride and Warren 2003; Sugiyama et al., 2016; Watson et al., 2020; Dye et al., 2021). High subaqueous melt rates remove mass from the glacier terminus and cause thermal undercutting (producing thermal notches) that promotes iceberg calving (Iken, 1977; Warren and Kirkbride, 2003; Roehl et al., 2006). Proglacial lake temperatures have been found to control seasonal ice front position in Patagonia and terminus morphology in New Zealand, where rapid (0.65 cm d^{-1}) thermal notch development has led to substantial undercutting of glacier termini (Minowa et al., 2017; Roehl et al., 2006). Such high subaqueous melt rates remove ice from the terminus and alter the stress balance at the ice front, as support is removed from the subaerial ice front so stresses increase within the ice, which may either fracture above the overhang (calving icebergs) or develop crevasses parallel to the ice front (Iken, 1977). Therefore, the glacier terminus position in glacial lakes is a delicate balance between dynamic ice fluxes towards the terminus and ablation processes at the ice-water interface, both of which respond sensitively to changes in climate and/or lake dynamics (Minowna et al., 2017).

Arctic amplification of climate change has increased air temperatures in the Arctic by four times the rate of Northern Hemisphere warming (Rantanen et al., 2022). Consequently, constraining the temperature of Arctic proglacial lakes is essential to understand their current and future influence on glacier retreat rates and associated impacts on downstream temperatures and ecology (Richards et al., 2012; Fellman et al., 2014; Kim et al., 2019; Woolway et al., 2019; Yiou et al., 2020), and their capacity to act as a carbon sink, particularly where suspended sediment concentrations from glacial meltwater are high (Sugiyama et al., 2016; St Pierre et al., 2019; Watson et al., 2020). To date, proglacial lakes have received relatively little attention across the Arctic, despite being associated with enhanced glacier retreat rates around the Greenland Ice sheet and Novaya Zemlya (MacIntyre et al., 2009; Carr et al., 2017; Carrivick and Quincey 2014; Mallalieu et al., 2021; Carrivick et al., 2022). Here, we present the first recorded in-situ proglacial lake temperature record from the front of an actively calving glacier in the Scandinavian Arctic, combined with analysis of high-frequency time-lapse imagery of calving events, sonar surveys of lake bathymetry and the sub-aqueous ice-front, multitemporal satellite imagery and digital elevation models (DEMs). Combined, this represents a detailed investigation into the influence of proglacial lake temperatures on mass loss of an Arctic glacier. The objectives of this study are:

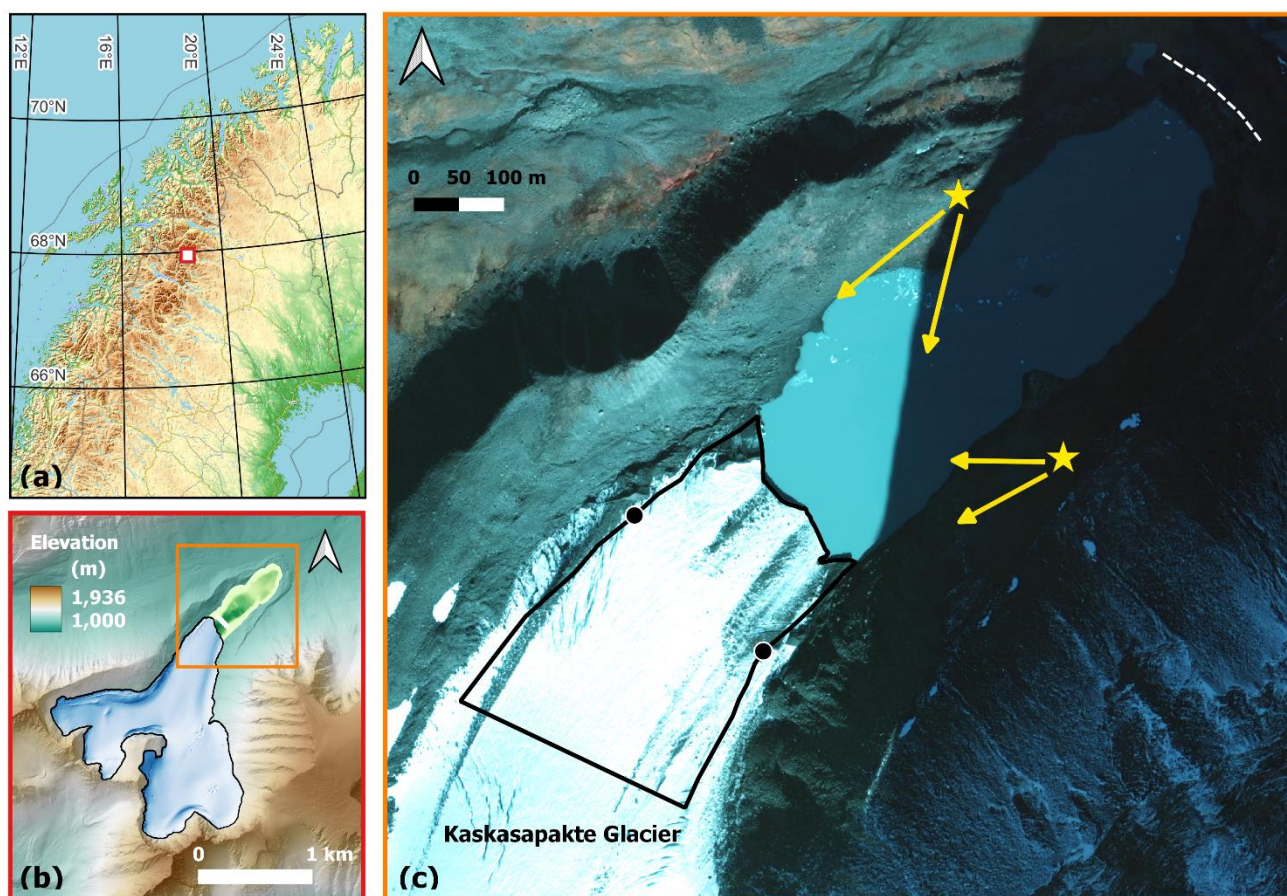
1. Measure terminus recession between 2008-2019 from remote sensing and investigate its relationship to proglacial lake bathymetry.
2. Document changes in the subaqueous (2019) and subaerial (2017-2019) geometry of the glacier terminus.
3. Classify calving mechanisms and investigate environmental drivers of calving throughout the 2019 melt season.
4. Assess the influence of lake water temperature and climate on terminus dynamics evolution at Kaskasapakte Glacier.

2. Study Area

Fieldwork was conducted at an unnamed proglacial lake (now referred to as KGL) in the Kebnekaise massif (Arctic Sweden), into which Kaskasapakte Glacier (KG) terminates, between 23rd July-4th August 2017 and 29th July-10th August 2019. Further sonar bathymetry surveys conducted in August 2022 are also included. KG is ~2 km long and flows northeast from two



65 subsidiary corries (located below ~500 m headwalls, with peaks of ~2,000 m to the east, south and west) into the main trunk,
terminating in a calving front (Fig. 1). KGL is situated at 1,100 m a.s.l. and was 670 m long, with a surface area of 0.13 km²
in August 2014 (Dye et al., 2022). KGL has expanded since ~1916 as the glacier has retreated from its Little Ice Age maximum
position at the terminal moraine (Karlen, 1973). The nearest weather station is 5 km south of the study site at Tarfala Research
Station (1,135 m asl; 67.9124°N, 18.6101°E) where the mean annual air temperature (MAAT) from 1965-2011 was -3.5 ± 0.9
70 °C, but the MAAT has risen to -2.2 °C between 2012 and 2022 (Jonsell et al., 2013; Kirchner et al; 2023).



75 **Figure 1.** (a) Location of Kaskasapakte glacier (67.95721°N, 18.56109°E) in Arctic Sweden (red box). (b) Digital Elevation Model (2m) and digitised glacier margin (black outline) from Lantmateriet Lidar survey August 2015 with bathymetry data from field surveys (c) Lantmateriet (0.5 m; 2008) Orthophoto with terminus polygon (black line) and width reference points (black circles). Yellow stars = timelapse camera positions and orientation. White dashed line = Little Ice Age maximum terminal moraine (in shadow top right corner) (Karlen, 1973).



3 Methods

3.1 Width averaged terminus position change from remote sensing

Orthophoto imagery (September 2008) from Lantmateriet was used as a baseline for assessing terminus geometry changes. Cloud and snow free RapidEye multispectral satellite images (5 m spatial resolution) of KG were downloaded for 16th August 2010, 14th August 2012, 20th July 2014, 24th August 2016, and 27th July 2018. To account for variations in visible glacier termini geometry (due to changes in debris cover) a consistent reference point (black circles; Fig.1) was selected on either side of the glacier where the width was kept consistent for each year between 2008 and 2018 (following the curvilinear box method; Lea et al., 2014) (Fig. 1). The glacier terminus area was then mapped downstream of these consistent width reference points to create terminus polygons for 2008, 2010, 2012, 2014, 2016 and 2018. Each terminus area was then subtracted from the preceding terminus area iteratively to calculate the area of ice lost over that period, and divided by the width between the polygon reference points (black circles; Fig. 1). This was then divided by the melt year value (decimal of cumulative number of days in June, July, August and September; corresponding to the melt season) for the period in each image acquisition. We therefore refer to the glacier retreat mapped in this study as m my^{-1} , as the month of image acquisition was not consistent across the dataset due to limited image availability. Thereby giving a width averaged retreat rate for the number of days during the melt season (June, July, August and September) in the period between image capture dates, thus accounting for the offset between image capture dates between years.

3.2 Lake bathymetry and subaqueous terminus geometry from sonar mapping

KGL has two distinct basins that were surveyed in summer 2022 with a Garmin echoMAP CHIRP 45cv sonar (with 5 Hz GPS/GLONASS) mounted on an Autonomous Surface Vessel (ASV). During the field season in 2022 downward looking sonar scans (at 200 kHz) were run in a grid near the ice front in conjunction with two survey lines along the lake axis from an inflatable kayak (up to 200m from the ice front), from which depth points were extracted (at 30 second intervals) and interpolated in QGIS (IDW algorithm within August 2019 lake polygon) to create the bathymetry map (see Supplementary S1). A series of side view sonar surveys were conducted from the ASV in 2019 near the ice front to map the glacier's subaqueous geometry, with the sonar transducer mounted side looking to collect sonar images using the CHIRP ClearVu setting (200 kHz).

3.3 Terminus geometry change

Eighty overlapping images of the glacier terminus were recorded on 3rd August 2019 from vantage points spaced along the lateral and terminal LIA moraine crests using a handheld Canon EOS 70D 20-megapixel digital single lens reflex (dSLR) camera. A digital elevation model (DEM) of the glacier terminus on 3rd August 2019 was generated by processing the images using Structure-from-Motion (SfM) techniques in Agisoft Metashape. The DEM was georeferenced using ground control



110 points (GCPs) of stable landscape features either side of the glacier terminus (large boulders, exposed bedrock; see Supplementary S1) recorded with a Trimble dGPS (following Mallalieu et al. 2017). Errors using this method are reported to be centimetric (Wilkinson et al., 2016).

In order to partition mass loss between surface lowering and terminus recession, changes in surface elevation of KG between 2015-2019 were calculated in QGIS (using Raster Calculator) by differencing the August 2019 SfM DEM from the 2015 Swedish Lantmateriet Lidar derived Digital Elevation Model (2 m) (See section 4.3 for polygon extent) to give the elevation change down to lake water level. The Volume Calculation tool in QGIS was used to calculate the volume changes between the 115 2019 and 2015 DEMs down to lake level. The ice proximal bathymetry was subtracted from the lake level (using QGIS volume calculation tool) to calculate the subaqueous ice volume lost due to terminus recession between 2015 and 2019 (see Fig. 4 for extent). Thus enabling the volume changes to be calculated for a. volume lost for surface lowering and b. volume lost (including subaqueous and subaerial) from terminus retreat between 2015 and 2019.

Changes in glacier terminus geometry were monitored over a two-week period from 23rd July to 4th August 2017 using an LTL 120 Acorn 5210a 12-megapixel time-lapse camera stationed on the lateral moraine above the eastern shore of KGL and programmed to record pictures at one-minute intervals. In 2019 two of the same camera model were stationed on the western and eastern KGL shores, and programmed to record images of the terminus every three-hours from 5th August to 19th September 2019 (Fig.1). Subaerial calving events throughout the 2019 melt season were identified in the time-lapse imagery and categorised into seven types, reflecting the primary mechanism and style of calving (ice fall; sheet collapse; stack topple; 125 waterline; subaqueous; roof/arch collapse; and unknown) following the classification of How et al. (2019). Of these calving mechanisms, three are directly associated with undercutting of the subaerial ice cliff at the water line (sheet collapse, waterline and roof/arch collapse), and the remaining mechanisms typically associated with outward or buoyant force imbalances at the terminus.

3.4 Lake water and meteorological changes through the melt season

130 Summer 2019 lake water temperatures were measured at 1 m depth on a line suspended from the glacier terminus (67.95396 N 18.55955 E) using a HOBO UAA-002-08 pendant to measure hourly temperature (± 0.5 °C) and light (so periods of solar warming could be identified). Hourly air temperatures and precipitation data were downloaded for August and September 2019 from Swedish Meteorological and Hydrological Institute (SMHI, smhi.se) which has an Automated Weather Station (AWS) situated in Tarfala (ca. 5 km from glacier front). Precipitation data (from Tarfala Research Stations AWS) was 135 obtained from Swedish Infrastructure for Ecosystem Science (SITES, 2020) .

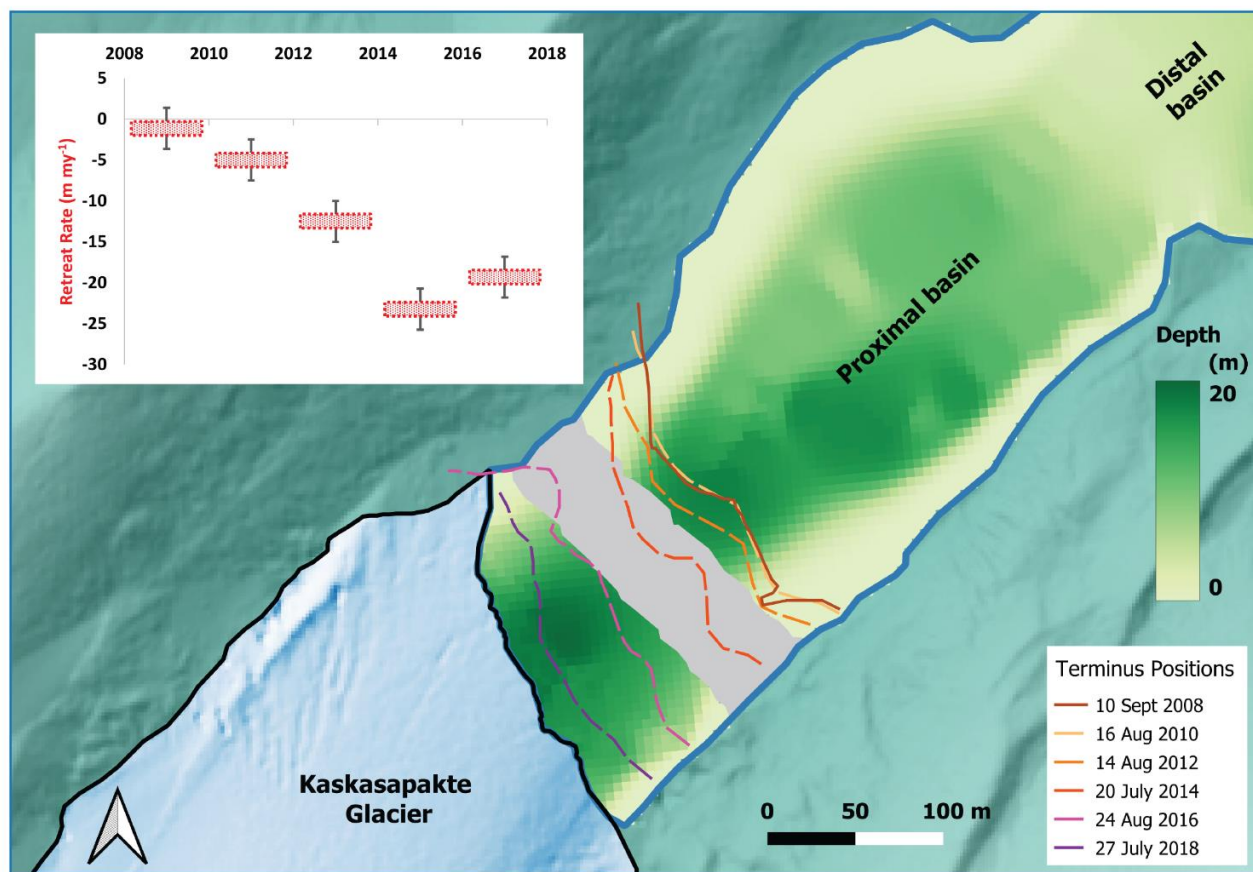


4 Results

4.1 Terminus position change 2008-2019 in relation to lake bathymetry

The glacier terminus sustained a similar position at the start of the observational period with minimal width averaged retreat (section 3.1) of 2 m between 2008 to 2010 (1.1 m my^{-1}), followed by a slight increase to 5.0 m my^{-1} (2010 to 2012) (Fig. 2).
140 Retreat rates then increased substantially to 12.5 m my^{-1} (2012 to 2014) and peaked at 23.2 m my^{-1} (2014 to 2016), before dropping slightly to 19.3 m my^{-1} (2016 to 2018). During this period the profile of the terminus (in plan view) changed in shape, with some satellite scenes (particularly from 27th July 2018 and 3rd August 2019) capturing a rather straight profile, whilst others (particularly from 20th July 2014) captured a more curvilinear profile with prominent bays (Fig. 2). Whilst these satellite images represent a snapshot in time, we report them here as there is noticeable variation between 2008 and 2019 that should
145 be considered in the context of lacustrine terminus geometry changes over time periods that are important to the typical progression of thermal undercutting by a proglacial lake. Particularly given the variability in englacial conduit position on the terminus and subsequent variability in terminus profile.

The KGL has 2 distinct basins, with the ice distal basin being substantively shallower (max depth $\sim 6 \text{ m}$), whereas the ice proximal basin is typically $>14 \text{ m}$ deep in the centre (max. depth $\sim 20 \text{ m}$) with shallower sections around the western margin
150 (Fig. 2 and Supplementary S1). The bathymetry survey revealed that central parts of the terminus remained in relatively deep water during the survey period (2008 to 2019). A more extensive survey grid next to the glacier revealed the shallow ($<5 \text{ m}$) margins of the lake to be relatively limited, extending out $<10 \text{ m}$ from the eastern shore but $\sim 50 \text{ m}$ on the western shore (Supplementary S1).



155

Figure 2. Digital Elevation model with outline of Kaskasapakte Glacier from 3rd August 2019 and bathymetry from sonar surveys in August 2022. Past terminus positions mapped in QGIS from imagery; i. Lantmateriet (2008) ii. Rapid Eye. Inset shows width averaged retreat rate in metres per melt year (decimal of June, July, August, September) between image acquisition dates. Grey area represents the absence of bathymetry data due to inclement survey conditions.

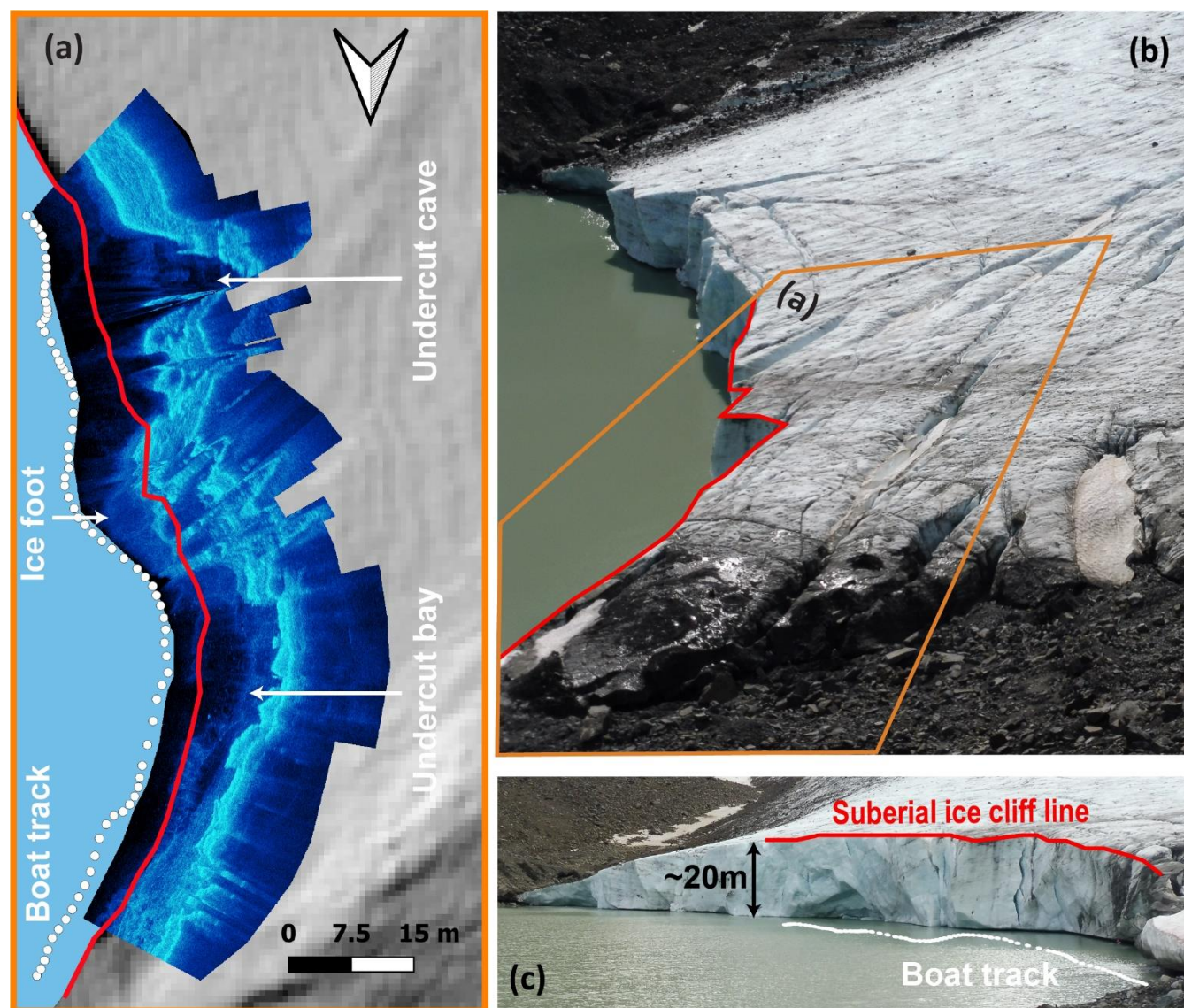
160 4.2 Subaqueous Terminus Geometry Change 2019

A strong reflector was returned from the northwest sector of the ice margin during the side-scanning sonar survey on 5th August 2019, which is interpreted to come from the subaqueous ice terminus (Sugiyama et al., 2019). The northernmost sector of the subaqueous terminus produced a strong reflector several metres to the west (up-ice) of the subaerial ice cliff, whereas the central sector showed a strong (but fractured) reflector extending into the lake beyond the top of the subaerial ice cliff as delineated from the DEM (3rd August 2019) (Fig.3). We interpret this as possibly being a small section of subaqueous ice foot protruding beyond the line of the subaerial cliff (by ~5 m) in the central part of the sonar scan (Fig.3a), as has been reported from side scanning sonar of Grey glacier in Patagonia (Sugiyama et al., 2019). Note that confidence in the precise extent (<1 m) of this is low given the positional accuracy of the GLONASS GPS system. The southernmost section of the sonar scan is

165



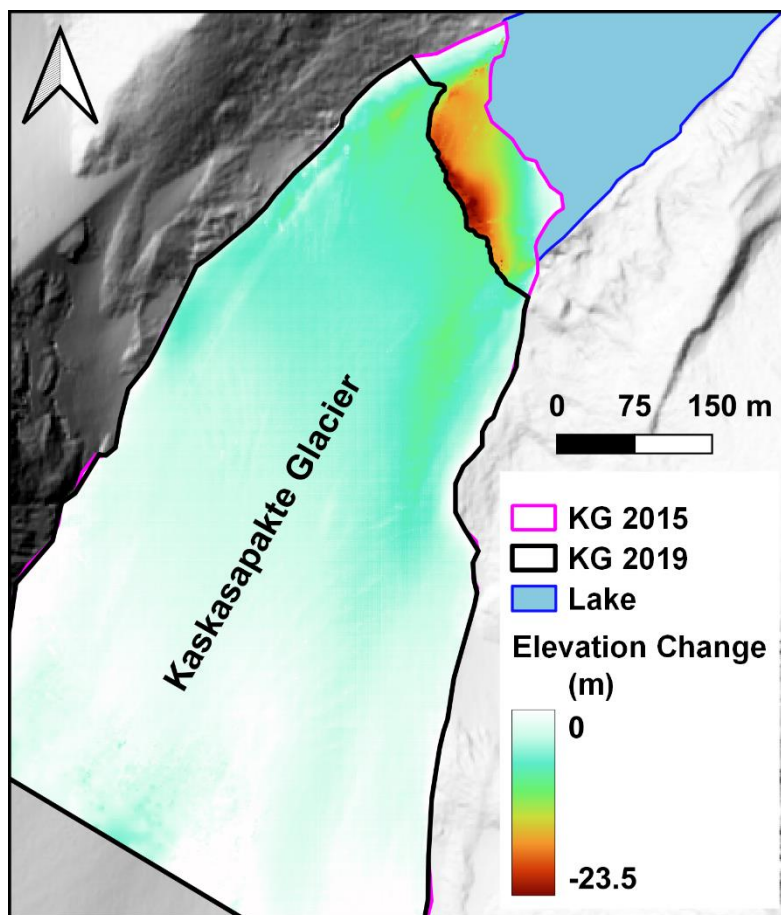
170 typified by a strong reflector notably recessed underneath ($> \sim 10$ m) the subaerial ice cliff (Fig. 3a), corresponding to an undercut cave and englacial outlet (Fig. 3c) from which currents were observed on afternoons (moving ice bergs).



175 **Figure 3.** (a) Side scanning sonar (5th August 2019) plotted over SfM DEM (3rd August 2019), with red line denoting the top of the subaerial ice front and white dots denoting survey track of the ASV – Note the cave feature near the southern end of the track line (central part of terminus). (b & c) Images of KG looking south across the terminus (3rd August 2019). Note small crevasse parallel to ice cliff near central portion. Orange inset in (b) denotes area covered by (a).



4.3 Subaerial Terminus Geometry Change 2015 to 2019



180 **Figure 4. Surface elevation change between August 2015 (Lantmateriet DEM) and 3rd August 2019 (SfM DEM). Black polygon denotes August 2019 terminus area and pink polygon denotes August 2015 terminus (both mapped from contemporaneous DEMs) used in conjunction with bathymetry for volume change analysis in QGIS.**

There was substantial thinning of KG's terminus from 2015-2019, predominately focused within 200 m (horizontally) of the calving front (Fig. 4), within this area surface lowering tended to be relatively uniform (7 to 8 m). Terminus elevation change analysis (section 3.3) was conducted to calculate: (a). volume loss from surface lowering (black polygon) and; (b). volume
185 loss from terminus retreat between 2015 and 2019 (pink polygon). The total surface volume loss (from surface lowering) across the 3rd August 2019 terminus outline (black polygon) since August 2015 was 774,374 m³.

Removal of the glacier ice surface (down to lake level) was between 0 to 23 m from removal of ice from the 2015 terminus extent (Fig. 4a). Bathymetry (cf. Sect. 4.2) varied slightly in this section but reached maximum depth of 20 m in the central sections of where ice had been removed since 2015 (Fig.2). The total volume loss (to the lake) between 2015 and 3rd August
190 2019 (pink polygon) was calculated to be 336,373 m³, thus highlighting the substantial changes in terminus geometry at KG. The total volume loss (a. and b.) from KG ablation area between 2015 and 2019 was 1,110,747 m³. Therefore, retreat of the

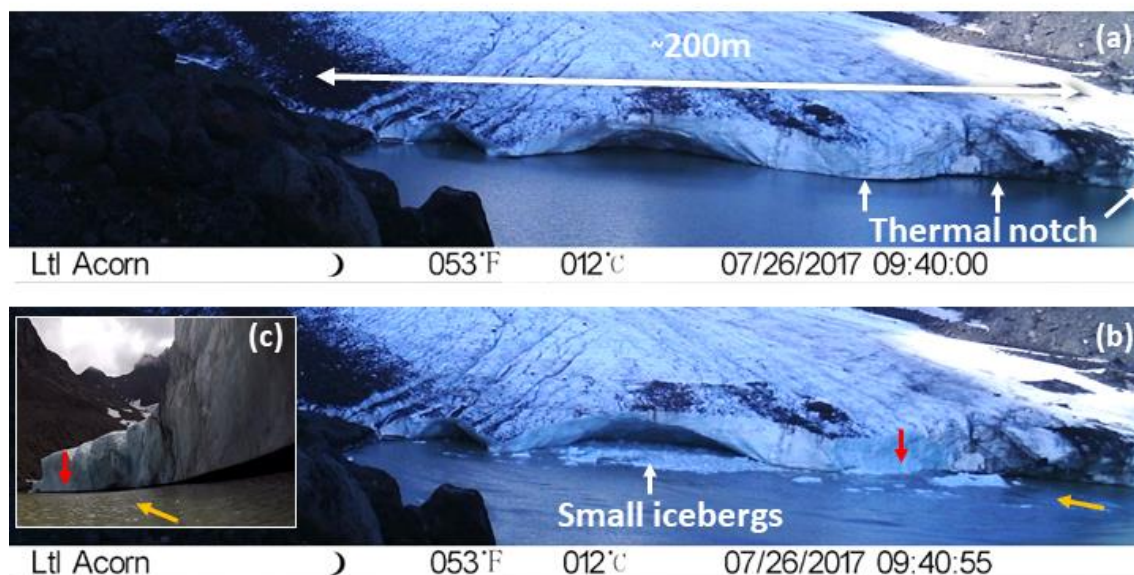


glacier from the lake (cf. Fig 4: volume of ice lost from the pink polygon area) accounts for 30.2% of surface volume change in the ablation area between 2015 and 2019.

4.3.1 Subaerial Geometry Terminus Change 2017

195 In July 2017 the KG terminus was characterised by substantial (several metres wide) cave features along its south-eastern section, but a relatively uniform vertical ice-cliff underlain by a thermal notch along the northern section (Fig. 5a). Calving events captured in time lapse imagery (section 3.3) on 26th July 2017 show icebergs produced from a roof instability in the main central cave, and more substantial icebergs (several metres across) from a collapse above the thermal notch (Fig. 5b). Following this latter event, no thermal notch was visible at the waterline along the northern sector of the terminus, however a sharp thermally-eroded notch had reformed along this section of the terminus by the 4th August 2017. Calving events were observed to be predominantly driven by thermal undercutting throughout July 2017 (Supplementary Table 1). Crevassing at the ice-front was limited to some relatively minor diagonal crevasse/weaknesses on the south-eastern sector of the margin (left image margin in Fig. 5 a. and b.).

200



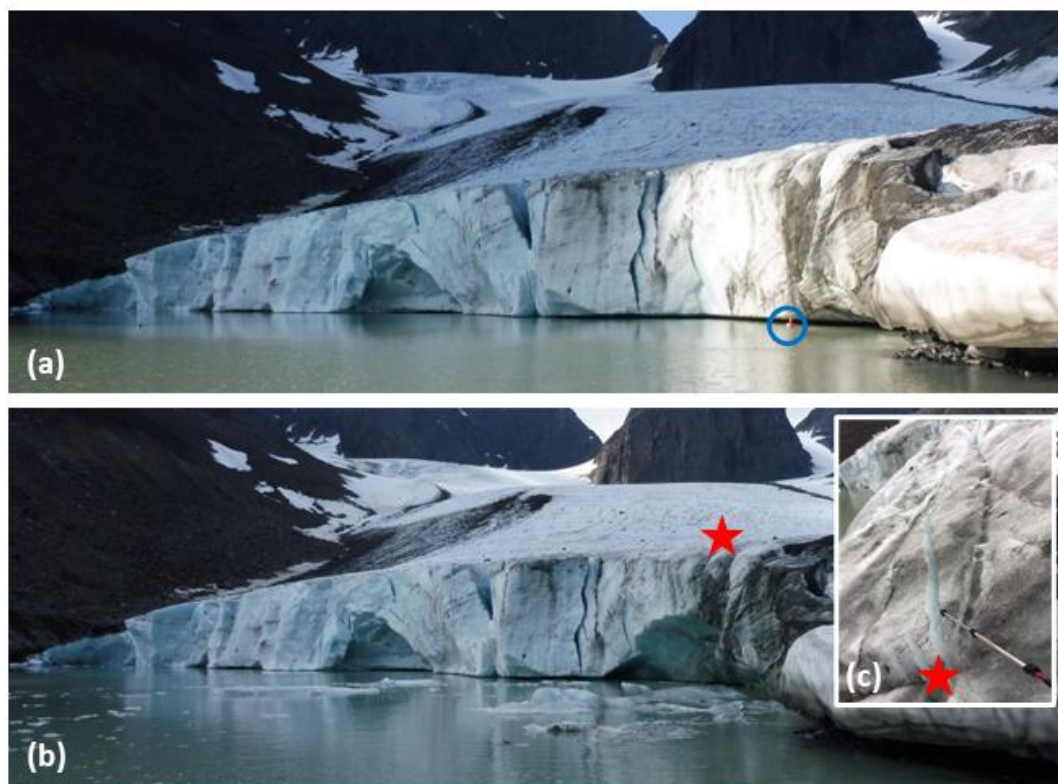
205

Figure 5. Timelapse images of calving activity at the glacier terminus in summer 2017: (a) 09:40:00 on the 26th July, showing thermal notch and cave features; (b) 55 seconds later, capturing results of multiple calving events, including collapse of cave roof and detachment of large iceberg above the thermal notch (red arrow). Yellow arrow illustrates orientation of viewpoint presented in panel (c); (c) looking east along the terminus on 4th August, showing shadowing at the waterline indicating lateral extent of thermal notch undercutting the terminus.

210

4.3.2 Subaerial Geometry Change 2019

In July-August 2019 the glacier terminus subaerial geometry was characterised by overhanging features and undercuts as the subaerial cliff profile protruded above the waterline, where an extensive thermal erosional notch extended across most of the terminus (note the shadowing in such features in Fig. 6). On 6th August a waterline calving event occurred (by the thermistor string), which resulted in a cave feature several metres deep (below red star Fig. 6b). Above this cave, cracks developed on the glacier surface, which were observed to widen further during 26th July and eventually failed sometime during 28th and 29th July (Fig. 6c). A relatively small (metres across) cave feature was observed in the central part of the terminus during July/August 2019, which was notably smaller than the relatively large (10's of metres across) central cave feature in 2017. More crevasses were present at the terminus than in 2017, with some orientated diagonally back into the glacier on each margin, as well as crevassing directly behind and parallel to the ice front (see Supplementary S2).



225 **Fig.6** Images of KG (Panasonic Lumix DMC-TZ57) looking southeast across the terminus with blue circle denoting position of buoy and thermistor string (Fig.7.a) (a) taken at 8:32 on 6th August 2019 (b) 10:03 on 6th August 2019 (c) Development of crack above arch on 6th August 2019. Red star indicates location of cracking in image (c).



4.4 Calving mechanism classification and environmental drivers from 2019 melt season

During the 2019 melt season calving events were predominantly driven by thermal undercutting creating an unstable ice cliff profile (Fig. 7). During a period of 46 days (5th August to 19th September 2019) there were 41 calving events in total, with 15 (36.6%) sheet collapses, 12 (29.3%) roof/arch collapses, 9 (22%) waterline events, 1 icefall and 4 events that were impossible to define the mechanism. Water temperatures were monitored in the ice proximal area from 29th July to 28th August 2019, temperatures of 3.6°C were also measured at 20m depth on 8th August 2019 (Supplementary S3). Lake temperatures were also monitored at the central lake point, with between 3 to 4 °C recorded at 5m depth, suggesting the lake was well mixed during the observation period (Supplementary S5). Three different phases of calving have been identified through this 30-day time series, with two periods of high calving activity (phases 1 and 3) and a relatively quiescent phase in between (phase 2) (Fig. 7).

Phase 1 from the 5th -16th August was characterised by high-rates of calving from a variety of mechanisms, air temperatures of ~3-10°, regular light precipitation events (<10 mm per day), and lake temperatures of ~4°C. Fluctuations in water temperature and light intensity on the 10th and 11th of August correspond with large calving events in the timelapse imagery. Phase 2 from the 16th - 27th August was characterised by very low-rates of calving via 1 mechanism (sheet collapse), air temperatures of ~5-10°C, regular light precipitation events with 1 large event (30 mm in 24 hours), and lake temperatures of ~2.5–3°C. Phase 3 from the 27th August-19th September was characterised by high-rates of calving for the first 4 days followed by lower-rates from a variety of mechanisms. Air temperatures were more varied with highs of 17°C and lows of -4°C, there were irregular light precipitation events (<10 mm per day), with lake temperatures of ~2.5-4°C. A calving event on 27th August resulted in a sharp (~0°C) but short (<24 hours) drop in water temperature before water temperatures around the sensor increased to 4 °C. A calving event on 28th August removed the thermistor string, which was likely carried into the lake body but was not directly warmed by solar radiation until 7th September (Lux remained <2,500).

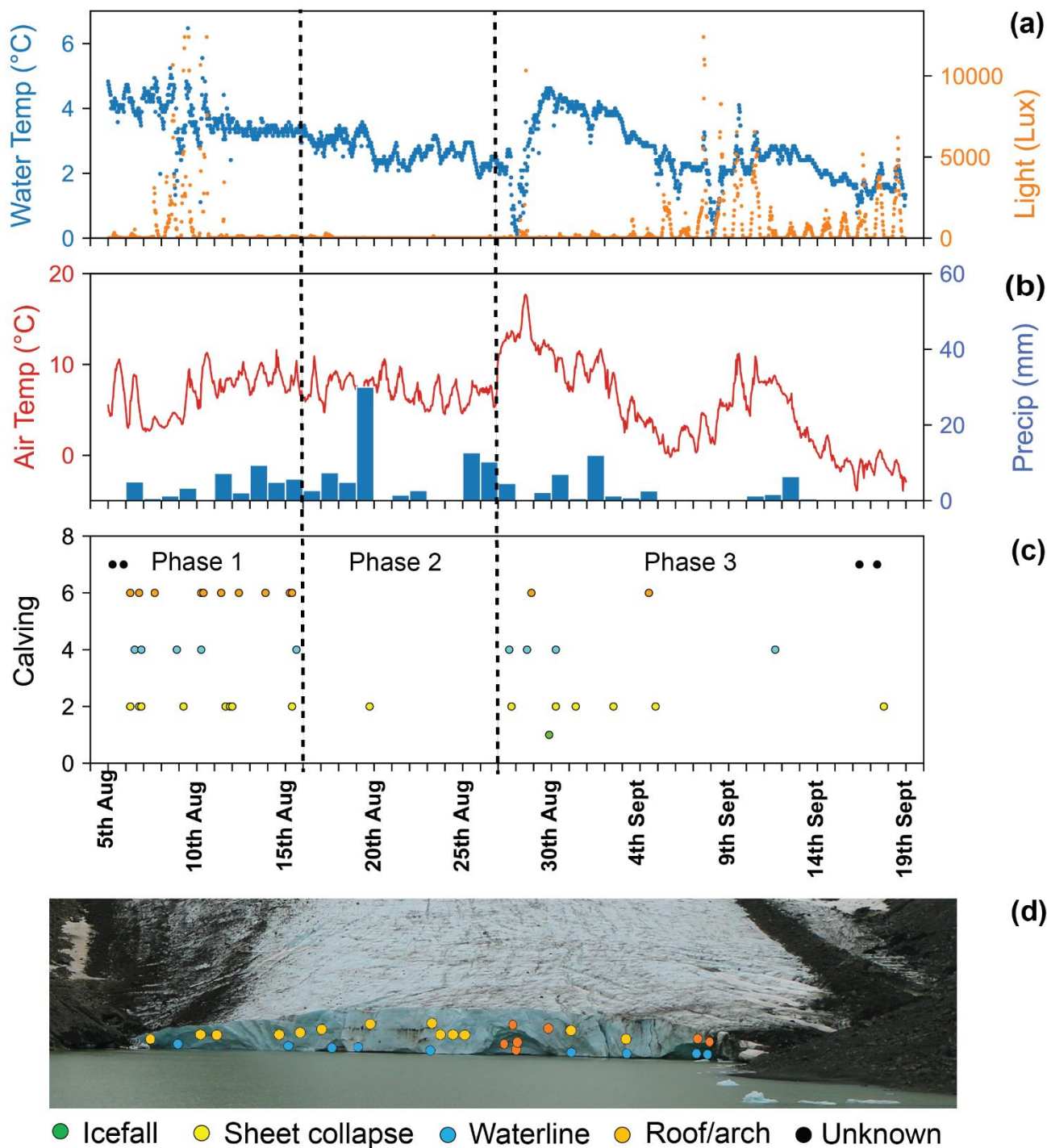


Figure 7. Lake, climate and calving parameters for 5th August–19th Sept 2019. (a) Water temperature data from KGL from thermistor (± 0.5 °C) at ~1 m deep on the glacier terminus, with light intensity (Lux). (b) Air Temperature from SMHI AWS at Tarfala Research Station Lower. Precipitation data from AWS at Tarfala Research Station (c) Classification of calving events

250



(following classification methods of How et al., 2019) (vertical axis is class of calving). Points are plotted by calving class and time (3-hour window) of calving activity. Stippled lines plotted to identify periods of calving activity or quiescence. (d) Location of calving events on the terminus over the duration of the survey.

5. Discussion

255 5.1 Terminus retreat

KG has undergone the most pronounced terminus retreat (126 m) of any glacier in the Kebnekaise area between 2010 and 2018 (Dye et al., 2022). The retreat of the land terminating Isfallsglaciären (122 m) was also large over this period, however, this was mainly due to enhanced mass loss from the decay of an icefall covering a relatively large proportion of the terminus area. In contrast Rabot's glacier (also land terminating) only retreated 81 m between 2010 and 2018 (Dye et al., 2022). We
260 argue that contact with KGL has enhanced the retreat of KG substantially and of a similar magnitude to the extensive crevassing from the icefall in the previous terminus of Isfallsglaciären. Whilst the relatively muted retreat of KG between 2008 and 2012 (Fig.2) cannot be fully explored here, we argue that subsequent warm events and heatwaves during the summer (particularly 2014 and 2018) have enhanced the terminus retreat through increased subaqueous melt and thermal undercutting of the terminus (Dye et al., 2020). Indeed, the width averaged terminus retreat of six neighbouring land-terminating glaciers around
265 the Tarfala valley from 2015 to 2022, was only 7.3 m a^{-1} , which is roughly a third of the retreat rate at KG between 2014-2016 (23.2 m my^{-1}) and 2016 to 2018 (19.3 m my^{-1}) (Houssais, 2023).

Table 1; The 6 largest width averaged retreats (following Lea et al., 2014) (2010 to 2018) of glaciers around the Kebnekaise area, mapped from Rapid Eye imagery (Dye et al, 2022). * denotes glaciers in contact with a proglacial lake.

Glacier	Width Averaged Retreat	Retreat rate 2010 to 2018
Kaskasapakte *	126 m	15.75 m a^{-1}
Isfallsglaciären	122 m	15.25 m a^{-1}
Mårmaglaciären *	110 m	13.75 m a^{-1}
Rabot's glaciär	81 m	10.13 m a^{-1}
Östra Bossosglaciären	67 m	8.38 m a^{-1}
Riehppiglaciären	63 m	7.88 m a^{-1}

270

The terminus geometry of lake terminating glaciers are controlled by glacier velocity, subaerial melt rates, lateral constraints/support from bedrock/moraines, subglacial bedrock geometry, mechanical processes, and thermo-erosional processes (Carrivick and Tweed, 2013). Lake depth and surrounding bedrock geometry can determine how much support and back stress a glacier receives from topography and so are an important control on the calving rate ($R^2 = 0.83$ for calving rates
275 to water depth of 9 glaciers; Warren and Kirkbride, 2003; Boyce et al., 2007). Sonar surveys suggest the bathymetry of the ice proximal basin (lake bed) is fairly consistent, with shallower sections along (<5 m) the margins and deeper central areas of 15 to 20 m (Fig. 2). Unfortunately, a gap (~50 m across) in the sonar survey of KGL remains, but we suggest that the gap



bathymetry is likely to be similar, as it is too small to have a substantial over-deepening and there is no evidence for any shallowing (such as a bedrock riegel or moraine). We argue that the main back stress acting on the terminus is likely to be via lateral support from the surrounding moraine, although this is largely ice cored and unstable material. Lake temperatures (cf. section 5.3) and associated calving mechanisms (cf. section 5.4) are more likely to be the main drivers of retreat rates at KG rather than variation in lake depth or lateral (frictional) support.

5.2 Surface Lowering

There has also been substantial surface lowering of KG between 2015 and 2018, with changes of 7 to 8 m extending 200 m back up glacier across the front, with 774,374 m³ ice lost in the 2019 ablation area between 2015 and 2019 (Fig. 4). Whilst a large proportion of this is likely to be due to subaerial melt, the contribution of dynamic thinning from glacier velocity has not been constrained. We argue that this is likely to be relatively minimal as glacier velocities from nearby Storglaciaren (10 to 30 m a⁻¹) and Rabot's glaciär (6 to 12 m a⁻¹) are relatively low due to frozen margins on both glaciers (Brugger et al., 2007). We argue observations of water filled crevasses persisting at KG margins through the melt season suggests the margins are frozen to the bed (Supplementary S2) (Moore et al., 2011). The lack of velocity data also means that the volume of ice lost into the lake (336,374 m³) between 2015 and 2019 is a conservative estimate, given that ice flux to the front is not constrained. Yet this represents 30.2 % of the overall volume change at KG between 2015 and 2019. So a greater understanding is needed of how lake-glacier interactions affect mass balance processes, and glacier responses to future climatic changes.

5.3 Proglacial Lake Temperatures

Previous melt models for lacustrine terminating glaciers have been compromised by a lack of data from the hazardous water to ice contact point, and assume a uniform temperature (e.g. 1 °C, Truffer and Motyka., 2016). We report temperatures of 4 °C directly at the ice-water contact point (over 11 days) following numerous iceberg calving events above thermal notches during summer 2019 (Fig.5). Near surface (1 m) lake water temperatures were significantly correlated ($R^2 = 0.47$) to air temperature (measured at Tarfala Research Station ca. 5 km away) during August/September 2019 (Supplementary S4), which is similar to studies of other Arctic lakes (e.g., $R^2 = 0.52$; MacIntyre et al., 2009). A close relationship between seasonal lake water temperature and seasonal ice front position has also been reported for Glaciar Perito Moreno in Patagonia ($R^2 = 0.96$) (Minowa et al., 2017). We argue that elevated proglacial lake water temperatures (and circulation) resulted in rapid thermal notch development and a series of iceberg calving events at KG in 2017 and 2019 (Roehl, 2006). There is a growing body of evidence that the thermal structure of proglacial lakes can have a substantial influence on glacier retreat rates (Sugiyama et al., 2021). The relatively high proglacial lake surface temperatures observed in this study would only partly account for rapid thermal undercutting of the notch, and it is proposed that currents flowing along the ice-water contact point would account for the remaining heat transfer required to create such a melt feature in a short space of time (9 days) in 2017 (Roehl et al., 2006).



5.4 Calving Mechanisms

310 The response of Arctic proglacial lake thermal regime to warmer air temperatures has received relatively little attention, despite
rapid warming in the region (and heatwaves) that will likely warm proglacial lakes and consequently increase subaqueous melt
and terminus undercutting (Kim et al., 2018; Rantanen et al., 2022). Examining the timing of changes in calving terminus
geometry is critical in order to understand the interlinkages within the system. Lag times must also be considered, as the
thermal undercutting process takes place over days (and longer); with Roehl (2006) reporting a maximum thermal notch
315 development rate of 65 cm day⁻¹. So once calving activity above thermo-erosional undercutting has reformed the ice front to a
more stable vertical profile, there is likely to be a quiescent phase (with minimal calving) until further thermo-erosional
undercutting produces a vertical profile unstable enough for calving to ensue. We argue that the calving regime at KG has been
dominated by thermo-erosional undercutting during the observation periods; where periods of high calving activity have
created a more stable vertical ice cliff profile and lead to a quiescent phase of low calving activity. Subsequent changes in
320 limnological conditions at the ice front (both in 2017 and 2019) then resulted in further substantial (metres) thermo-erosional
undercutting of the terminus followed by a period of high calving activity.

5.4.1 2017 Field Season

There was strong evidence for thermo-erosional undercutting dominating terminus geometry changes during the 2017 field
325 season, including overhanging caves and a thermal notch across the whole terminus (Fig. 5). The sharpness of the notch (Fig.
5c) suggests formation through subaqueous melt (subaerial melt leads to rounding of features). This unsupported terminus
geometry resulted in multiple calving events above the original thermal notch, producing a vertical terminus subaerial profile
and no thermal notch at the waterline (Fig. 5b). Following this initial calving, rapid thermal notch formation was observed
over a 9-day period between (26th July to 4th August), demonstrating that terminus geometry can be quickly undermined to
330 produce an unstable ice cliff profile (Fig.5c). These observations of calving above thermally undercut features during July and
August 2017 coincided with the second highest terminus retreat rate (19.3 m my⁻¹; 2016 to 2018). We argue that thermal
erosional undercutting was the main process driving mass loss and terminus retreat during this period in 2017, particularly as
the lack of crevassing behind the ice front (Fig.5) suggests that there was no contribution of mechanically derived processes
on the fracture pattern and consequent production of icebergs at this time.

335

5.4.2 2019 Field Season

During the 2019 field season we categorised 3 phases of calving activity (How et al., 2019), with high numbers of calving
events during phase 1, a more quiescent phase 2, followed by a period of moderate calving activity in phase 3 (Fig. 7). Calving
events on the 8th, 9th and 10th of August caused short term (<1 day) distinct cooling (>1 °C) of water at the terminus, suggesting
340 such cooling tends to be short and sharp (if icebergs are removed quickly from the terminus). Water temperatures remained
relatively high (fluctuating ~4 °C) during phase 1, before a sharp decrease to 3 °C shortly (~24 hours) before the beginning of



the quiescent calving phase 2 (Fig.7). Air temperatures were relatively similar over this period, with the latter fluctuating between 3 and 10 °C during phase 1 and between 5 to 10 °C during phase 2 (Fig.7). Therefore, we argue that the drop in water temperatures at the end of phase 1 is likely due to input from the glacial drainage system (with some internal lag likely), following melt and precipitation in the days prior to 15th August, causing cooling and mixing of lake water. Lake water further cooled following a large rainfall event on 19th August 2019. The timing of decreases in water temperature at the end of phase 1 (16th August) and cessation of calving roughly 24 hours after, would tentatively suggest that calving is tightly controlled by lake water temperature.

During phase 3 water temperatures increased to 4 °C, which we argue is due to increased air temperatures (maximum of 17.3 °C on 28th August) combined with a period of relatively high winds ($>5 \text{ ms}^{-1}$) that resulted in efficient positive sensible heat flux into the lake (see Supplementary S5). This is an important increase in lake temperatures relatively late in the melt season as it corresponded with a period of iceberg calving activity that we argue was due to meteorological conditions (rather than solar insolation) warming the lake and driving further undercutting of the terminus.

Side scanning sonar confirmed that undercutting (by several metres) was relatively extensive across the terminus (Fig.4), particularly along the northern section of terminus where subsequent calving activity occurred above an undercut several metres deep (Fig.6). Analysis of calving mechanisms in 2019 suggests that calving was primarily driven by thermal undercutting; 36.6% of calving events were sheet collapses, likely to be caused by weakness at/near the waterline, and 22% were waterline events, often occurring above or below a notch (How et al., 2019). There was also a large proportion (29.3%) of calving events from cave roof/arch collapses, which are caused by undercutting at the ice front that develops overhanging features where cliff support has been removed (Fig.6). There was some clustering of calving activity in 2019, with some events happening just hours apart and these tended to be a waterline event followed by a sheet or arch collapse higher up the ice front (Fig.7). This analysis provides support to calving being primarily driven by thermal undercutting of the ice front.

5.4.3 Mechanical calving processes

Thinning of the glacier snout makes the terminus more susceptible to mechanical calving processes. As the ice mass thins it becomes closer to the flotation point, which can increase crevassing due to upward forces (Benn et al., 2007; Boyce et al., 2007; Tsutaki et al., 2013). Any upward forcing on the glacier could enable lake water penetration under the glacier and if subglacial water pressures increase it could increase glacier velocity and crevassing from extensional flow (Sugiyama et al., 2016). Crucially, these mechanical processes are unlikely to be the primary drivers at KG between 2017 and 2019, as evidenced from the minimal crevassing behind the ice front (Fig. 3 and 5). There were some prominent crevasses at the terminus during 2019 and we argue that these were not the primary driver of iceberg calving as demonstrated by the analysis of calving mechanisms (Fig. 7), although they sometimes controlled the extent and size of icebergs. We also argue that some of these crevasses that developed behind and parallel to the ice front were localised and have developed in response to undercutting of the terminus and consequent stresses on ice behind the calving front (Iken, 1977) (Fig. 3).



375 We argue that the margins and terminus are likely to be frozen to the bed (as at neighbouring Storglaciaren) as water filled
crevasses persisted through the melt season and the supraglacial debris ridges seen at the margins of KG are typically associated
with the transition of temperate to cold based ice (Moore et al., 2011; Monz et al., 2022). Lake water penetration and hydraulic
conductivity to subglacial drainage system is likely to be limited, so mechanical drivers of calving are likely to be minimal, at
least initially. Whether this cold based ice has been removed from the front through iceberg calving is an open research question
380 that is of critical importance, as glacier velocity will increase if the resistance from cold based ice at the terminus is removed
and may occur at other Arctic polythermal water terminating glaciers. Therefore increased thermal undercutting of lacustrine
glacier termini due to proglacial lake warming needs to be better understood given increasing air temperatures, not only for
the initial enhanced mass loss of such glaciers (as argued in this study) but also potential implications for glacier dynamics.

5.5 Wider Implications

385 Whilst the observations from KG during 2017 and 2019 are a relatively limited snapshot in time; they do show that water
temperatures were warmer (>4 °C) than has previously been expected (1 °C) for small proglacial lakes and resulted in
substantial (metres) thermal undercutting with periods of high calving activity in both melt seasons. This rapid undercutting
has been focused around englacial conduits observed in the glacier terminus, that create crucial weaknesses in the ice front and
also a focus point for driving water circulation during periods of high meltwater output. Future research should examine the
390 evolution of subaerial and subaqueous lacustrine glacier termini, particularly given future predictions of air temperature
increases and associated reduction of lake ice cover duration, which will expose lake water to greater warming influences
(Huang et al., 2022). Side scanning sonar surveys of the subaqueous ice front has great potential to constrain subaqueous melt
rates of lacustrine termini and subsequent evolution of geometry in relation to calving activity (from timelapse imagery). This
combined with monitoring in situ meteorological parameters would provide a strong basis for understanding the feedbacks
395 between climatic changes and processes of mass loss at lacustrine glacier termini; which is currently poorly constrained in
glacier mass loss models (Carrivick et al., 2020). This is essential in not only predicting the future mass balance of glaciers in
contact with proglacial lakes, but also lake thermal regime and subsequent impact that any changes have on their ability as a
carbon sink, as well as impact on stream hydrology and ecology (Carrivick et al., 2020, Fellman et al., 2014, St Pierre et al.,
2019).

400 5. Conclusion

The water temperatures reported by this study are substantially warmer than the uniform 1 °C that has been previously assumed
for small proglacial lakes (Truffer and Motyka, 2016). This study provides the first (to our knowledge) direct field evidence
of warm (>4 °C) proglacial lake temperatures at a lacustrine terminus enhancing the retreat of an Arctic glacier, through rapid
thermo-erosional undercutting and associated calving. KG lost 1.5% of the surface area between 2008 and 2018, with retreat
405 rates increasing after 2012 and reaching a maximum of 23 m per melt year. Processes of ice loss at the proglacial lake to glacier
interface were a key part of this terminus retreat as 30% of ice volume loss between 2015 to 2019 was from frontal ablation as

the terminus position retreated across the proglacial lake. Processes arising from contact with the proglacial lake have had a substantial role in mass loss and retreat of KG.

410 Thermal undercutting was found to be the primary driver of iceberg calving during 2017 and 2019. The rapid (~9 days) formation of thermally eroded notches at the waterline in 2017 highlights the short time frame in which the subaerial ice front can be undermined. Calving events mainly occurred during the early summer in 2019, with a quiescent phase before more calving activity occurred in late summer, suggesting several weeks are required for thermal undercutting to become extensive enough to trigger calving at this glacier (depending on meteorological conditions). Thermal erosional undercutting of the terminus appeared to be extensive during 2019 and was also confirmed to be several metres deep from side scanning sonar 415 imagery. The general lack of a subaqueous ice foot and extensive undercutting resulted in subaerial calving above this and some crevassing parallel to the ice front, in response to changes in the stress regime (Iken, 1977). We argue that the influence of mechanical processes on calving (such as topples and ice fall calving from crevassed areas) have been minimal during the period of observations, whereas thermal undercutting from warm proglacial lake temperatures has been extensive. During this 420 period there has been a series of heatwave events, with July 2018 representing the warmest (5.6 °C above the long-term average) and also the magnitude of the event has been strongly attributed to anthropogenic forcing (Jonsell et al., 2011; Yiou et al., 2020). Given the observed and projected air temperature increases in the Arctic, it is of critical importance to further study the distribution and impact of proglacial lakes on glacier retreat across the region (Carr et al., 2013).

425 **Author Contributions**

Conceptualisation, A.D., R.B., F.F., J.M. and D.R.; Methodology, A.D., R.B., F.F., J.M., D.R. and M.B.; Investigation, A.D., R.B., F.F., J.M., M.D. and M.B.; Resources, A.D., R.B., F.F., J.M. and D.R. Data curation; A.D., J.M., N.K. and M.B., Writing – original draft preparation, A.D., Writing – reviewing and editing; A.D., R.B., F.F., J.M. and N.K.; supervision D.R. and R.B.; project administration, University of York; funding acquisition, D.R. and A.D. All authors have read and agreed to the 430 published version of the manuscript.

Competing Interests

The contact author has declared that none of the authors has any competing interests.

435 **Acknowledgements**

This research would not have been possible without the excellent support and logistics from Tarfala Research Station and funding from INTERACT Transnational Access (CIWB 2019 and GLRETA 2020) and the Royal Geographical Society (SRG 2020). We would also like to thank Martyn Dye, Steve Thompson and Tom Sloan for enduring several days of poor weather whilst at the field camp in Sweden and still providing excellent field support.

440



References

- Benn, D. I., Warren, C. R., & Mottram, R. H. (2007). Calving processes and the dynamics of calving glaciers. *Earth-Science Reviews*, 82(3-4), 143-179.
- Boyce, E. S., Motyka, R. J., & Truffer, M. (2007). Flotation and retreat of a lake-calving terminus, Mendenhall Glacier, southeast Alaska, USA. *Journal of Glaciology*, 53(181), 211-224. <https://doi.org/10.3189/172756507782202928>
- 445 Brugger, K. A. (2007). The non-synchronous response of Rabots Glaciär and Storglaciären, northern Sweden, to recent climate change: a comparative study. *Annals of Glaciology*, 46, 275-282.
- Carr, J. R., Stokes, C., & Vieli, A. (2014). Recent retreat of major outlet glaciers on Novaya Zemlya, Russian Arctic, influenced by fjord geometry and sea-ice conditions. *Journal of Glaciology*, 60(219), 155-170.
- 450 Carrivick, J. L., & Tweed, F. S. (2013). Proglacial lakes: character, behaviour and geological importance. *Quaternary Science Reviews*, 78, 34-52.
- Carrivick, J. L., & Quincey, D. J. (2014). Progressive increase in number and volume of ice-marginal lakes on the western margin of the Greenland Ice Sheet. *Global and Planetary Change*, 116, 156-163.
- Carrivick, J. L., How, P., Lea, J. M., Sutherland, J. L., Grimes, M., Tweed, F. S., ... & Mallalieu, J. (2022). Ice-marginal proglacial lakes across Greenland: Present status and a possible future. *Geophysical Research Letters*, 49(12), e2022GL099276.
- 455 Chernos, M., Koppes, M., & Moore, R. D. (2016). Ablation from calving and surface melt at lake-terminating Bridge Glacier, British Columbia, 1984–2013. *The Cryosphere*, 10(1), 87-102.
- Christiansen, H. H., Etzelmüller, B., Isaksen, K., Juliussen, H., Farbrot, H., Humlum, O., ... & Ødegård, R. S. (2010). The thermal state of permafrost in the nordic area during the international polar year 2007–2009. *Permafrost and Periglacial Processes*, 21(2), 156-181.
- 460 Dye, A., Bryant, R., Dodd, E., Falcini, F., & Rippin, D. M. (2021). Warm Arctic proglacial lakes in the ASTER surface temperature product. *Remote Sensing*, 13(15), 2987.
- Dye, A., Bryant, R., & Rippin, D. (2022). Proglacial lake expansion and glacier retreat in Arctic Sweden. *Geografiska Annaler: Series A, Physical Geography*, 104(4), 268-287.
- 465 Fellman, J. B., Nagorski, S., Pyare, S., Vermilyea, A. W., Scott, D., & Hood, E. (2014). Stream temperature response to variable glacier coverage in coastal watersheds of Southeast Alaska. *Hydrological Processes*, 28(4), 2062-2073.
- Houssais, M. (2023). Glacier front variations in Sweden: 2015-2022. MSc. University of Stockholm. <https://www.diva-portal.org/smash/get/diva2:1786672/FULLTEXT01.pdf>
- 470 How, P., Schild, K. M., Benn, D. I., Noormets, R., Kirchner, N., Luckman, A., ... & Borstad, C. (2019). Calving controlled by melt-under-cutting: detailed calving styles revealed through time-lapse observations. *Annals of Glaciology*, 60(78), 20-31.
- Iken, A. (1977). Movement of a large ice mass before breaking off. *Journal of Glaciology*, 19(81), 595-605.



- Jonsell, U., Hock, R., & Duguay, M. (2013). Recent air and ground temperature increases at Tarfala Research Station, Sweden. *Polar Research*, 32.
- Karlén, W. (1973). Holocene glacier and climatic variations, Kebnekaise mountains, Swedish Lapland. *Geografiska Annaler. Series A. Physical Geography*, 29-63.
- Kim, S., Sinclair, V. A., Räisänen, J., & Ruuhela, R. (2018). Heat waves in Finland: Present and projected summertime extreme temperatures and their associated circulation patterns. *International Journal of Climatology*, 38(3), 1393-1408.
- 480 King, O., Quincey, D. J., Carrivick, J. L., & Rowan, A. V. (2017). Spatial variability in mass loss of glaciers in the Everest region, central Himalayas, between 2000 and 2015. *The Cryosphere*, 11(1), 407-426.
- Kirchner, N., Barnett, J., and TRS staff (2023) Monthly mean air temperatures from Tarfala Research Station, Kebnekaise Mountains, 1965–2022. Dataset version 1. Bolin Centre Database. <https://doi.org/10.17043/tarfala-kirchner-2023-monthly-temperature-1>
- 485 Lea, J. M., Mair, D. W., & Rea, B. R. (2014). Evaluation of existing and new methods of tracking glacier terminus change. *Journal of Glaciology*, 60(220), 323-332.
- MacIntyre, S., Fram, J. P., Kushner, P. J., Bettez, N. D., O'Brien, W. J., Hobbie, J. E., & Kling, G. W. (2009). Climate-related variations in mixing dynamics in an Alaskan arctic lake. *Limnology and Oceanography*, 54(6part2), 2401-2417.
- Mallalieu, J., Carrivick, J. L., Quincey, D. J., & Smith, M. W. (2020). Calving seasonality associated with melt-undercutting and lake ice cover. *Geophysical Research Letters*, 47(8), e2019GL086561.
- 490 Mallalieu, J., Carrivick, J. L., Quincey, D. Q. & Raby, C. L. (2021). Ice-marginal lakes associated with enhanced recession of the Greenland Ice Sheet. *Global and Planetary Change*, 202, 103503.
- Minnett, P. J., Smith, M., & Ward, B. (2011). Measurements of the oceanic thermal skin effect. *Deep Sea Research Part II: Topical Studies in Oceanography*, 58(6), 861-868.
- 495 Minowa, M., Sugiyama, S., Sakakibara, D., & Skvarca, P. (2017). Seasonal variations in ice-front position controlled by frontal ablation at Glaciar Perito Moreno, the Southern Patagonia Icefield. *Frontiers in Earth Science*, 5, 1.
- Minowa, M., Sugiyama, S., Sakakibara, D., & Skvarca, P. (2017). Seasonal variations in ice-front position controlled by frontal ablation at Glaciar Perito Moreno, the Southern Patagonia Icefield. *Frontiers in earth science*, 5, 1.
- Monz, M. E., Hudleston, P. J., Cook, S. J., Zimmerman, T., & Leng, M. J. (2022). Thrust faulting in glaciers? Re-examination of debris bands near the margin of Storglaciären, Sweden. *Boreas*, 51(1), 78-99.
- 500 Moore, P. L., Iverson, N. R., Brugger, K. A., Cohen, D., Hooyer, T. S., & Jansson, P. (2011). Effect of a cold margin on ice flow at the terminus of Storglaciären, Sweden: implications for sediment transport. *Journal of Glaciology*, 57(201), 77-87.
- Rantanen, M., Karpechko, A. Y., Lipponen, A., Nordling, K., Hyvärinen, O., Ruosteenoja, K., ... & Laaksonen, A. (2022). The Arctic has warmed nearly four times faster than the globe since 1979. *Communications Earth & Environment*, 3(1), 168.
- 505 Richards, J., Moore, R. D., & Forrest, A. L. (2012). Late-summer thermal regime of a small proglacial lake. *Hydrological Processes*, 26(18), 2687-2695.



- Röhl, K. (2006). Thermo-erosional notch development at fresh-water-calving Tasman Glacier, New Zealand. *Journal of Glaciology*, 52(177), 203-213.
- Serreze, M. C., & Barry, R. G. (2011). Processes and impacts of Arctic amplification: A research synthesis. *Global and planetary change*, 77(1-2), 85-96.
- 510 Skvarca, P., Satow, K., Naruse, R., & LEIVA, J. C. (1995). Recent thinning, retreat and flow of Uppsala Glacier, Patagonia. *Bulletin of Glacier Research*, (13), 11-20.
- Sugiyama, S., Minowa, M., & Schaefer, M. (2019). Underwater ice terrace observed at the front of Glaciar Grey, a freshwater calving glacier in Patagonia. *Geophysical research letters*, 46(5), 2602-2609.
- 515 Sugiyama, S., Minowa, M., Fukamachi, Y., Hata, S., Yamamoto, Y., Sauter, T., ... & Schaefer, M. (2021). Subglacial discharge controls seasonal variations in the thermal structure of a glacial lake in Patagonia. *Nature communications*, 12(1), 6301.
- St. Pierre, K. A., St. Louis, V. L., Schiff, S. L., Lehnher, I., Dainard, P. G., Gardner, A. S., ... & Sharp, M. J. (2019). Proglacial freshwaters are significant and previously unrecognized sinks of atmospheric CO₂. *Proceedings of the National Academy of Sciences*, 116(36), 17690-17695.
- 520 Truffer, M., & Motyka, R. J. (2016). Where glaciers meet water: Subaqueous melt and its relevance to glaciers in various settings. *Reviews of Geophysics*, 54(1), 220-239.
- Tsutaki, S., Sugiyama, S., Nishimura, D., & Funk, M. (2013). Acceleration and flotation of a glacier terminus during formation of a proglacial lake in Rhonegletscher, Switzerland. *Journal of Glaciology*, 59(215), 559-570.
- Yiou, P., & Jézéquel, A. (2020). Simulation of extreme heat waves with empirical importance sampling. *Geoscientific Model Development*, 13(2), 763-781.
- 525 Vaughan, D.G., J.C. Comiso, I. Allison, J. Carrasco, G. Kaser, R. Kwok, P. Mote, T. Murray, F. Paul, J. Ren, E. Rignot, O. Solomina, K. Steffen and T. Zhang, 2013: Observations: Cryosphere. In: *Climate Change 2013: The Physical Science Basis. Contribution of Working Group I to the Fifth Assessment Report of the Intergovernmental Panel on Climate Change* [Stocker, T.F., D. Qin, G.-K. Plattner, M. Tignor, S.K. Allen, J. Boschung, A. Nauels, Y. Xia, V. Bex and P.M. Midgley (eds.)]. Cambridge University Press, Cambridge, United Kingdom and New York, NY, USA, pp. 317–382, doi:10.1017/CBO9781107415324.012.
- 530 Sugiyama, S., Minowa, M., Sakakibara, D., Skvarca, P., Sawagaki, T., Ohashi, Y., ... & Chikita, K. (2016). Thermal structure of proglacial lakes in Patagonia. *Journal of Geophysical Research: Earth Surface*, 121(12), 2270-2286.
- Warren, C. R., & Kirkbride, M. P. (1998). Temperature and bathymetry of ice-contact lakes in Mount Cook National Park, New Zealand. *New Zealand Journal of Geology and Geophysics*, 41(2), 133-143.
- 535 Warren, C. R., & Kirkbride, M. P. (2003). Calving speed and climatic sensitivity of New Zealand lake-calving glaciers. *Annals of Glaciology*, 36, 173-178.
- Watson, C. S., Kargel, J. S., Shugar, D. H., Haritashya, U. K., Schiassi, E., & Furfaro, R. (2020). Mass loss from calving in Himalayan proglacial lakes. *Frontiers in Earth Science*, 7, 342.



540 Wilkinson, M. W., Jones, R. R., Woods, C. E., Gilment, S. R., McCaffrey, K. J. W., Kokkalas, S., & Long, J. J. (2016). A
comparison of terrestrial laser scanning and structure-from-motion photogrammetry as methods for digital outcrop
acquisition. *Geosphere*, 12(6), 1865-1880.

Woolway, R. I., Kraemer, B. M., Lenters, J. D., Merchant, C. J., O'Reilly, C. M., & Sharma, S. (2020). Global lake responses
to climate change. *Nature Reviews Earth & Environment*, 1(8), 388-403.

545