

Supplemental Figures for “The impact of nitrogen and phosphorous limitation on the estimated terrestrial carbon balance and warming of land use change over the last 156yr” by Q. Zhang et al.

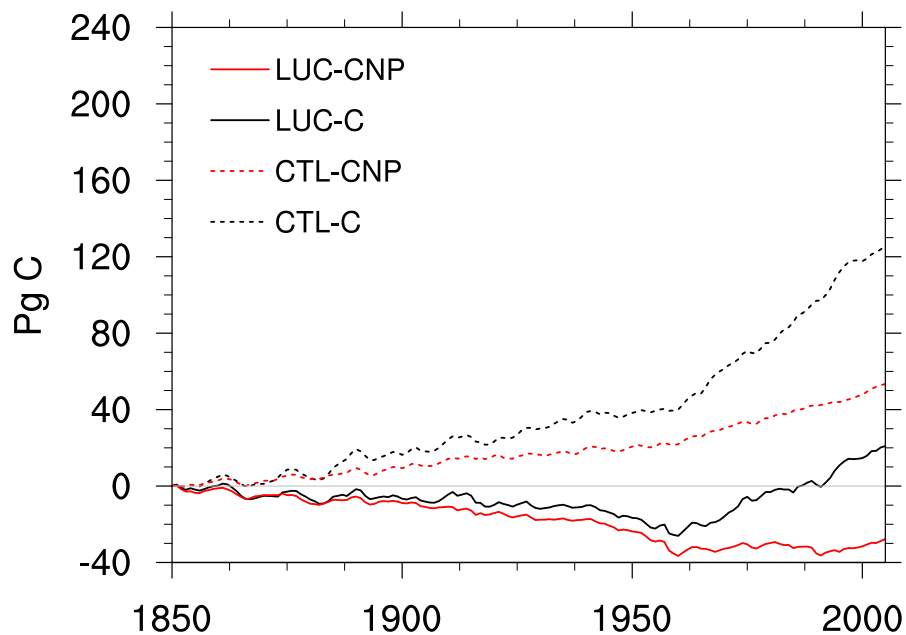


Fig. S1. Changes of carbon stored in plant (Pg C) for 1850-2005, with and without land use change under C-only and N and P limitation. Positive value indicates increases in global plant carbon.

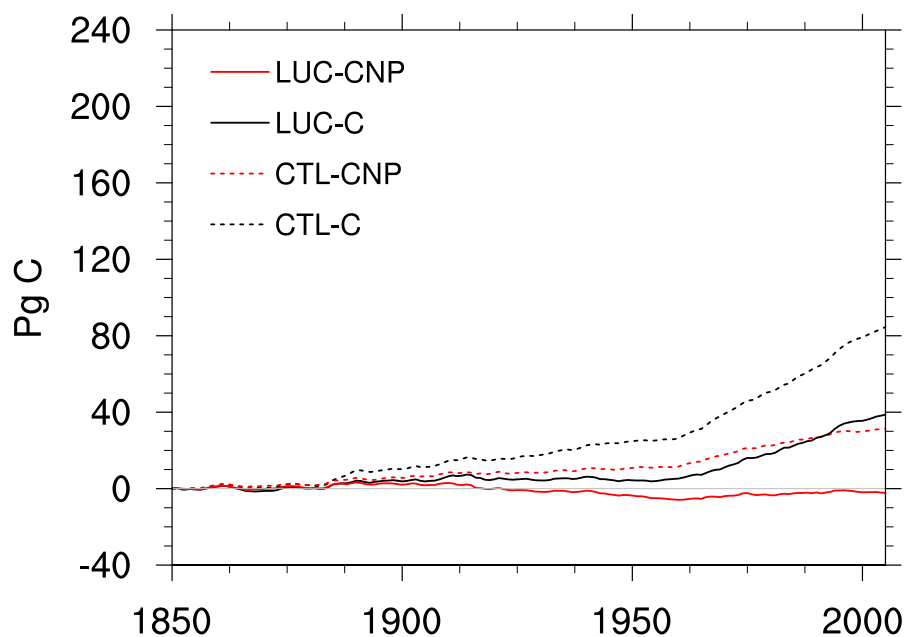


Fig. S2. Same as Fig. S1 but for changes of carbon stored in soil (including litter).

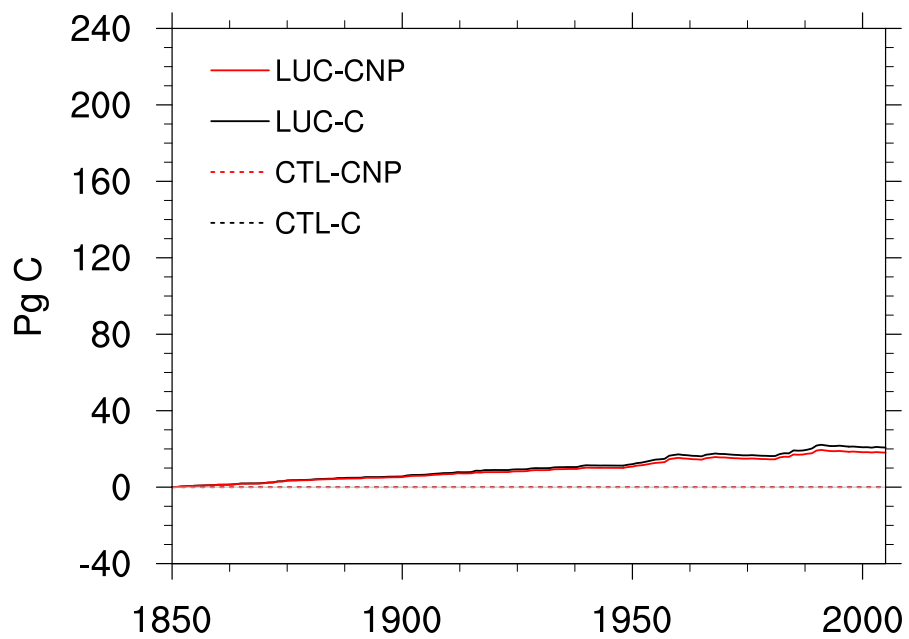


Fig. S3. Same as Fig. S1 but for changes of carbon stored in wood product pools.