

## Supplementary material for:

# Projecting Antarctica's contribution to future sea level rise from basal ice-shelf melt using linear response functions of 16 ice sheet models (LARMIP-2)

- 5 Anders Levermann<sup>1,2,3,\*</sup>, Ricarda Winkelmann<sup>1,3</sup>, Torsten Albrecht<sup>1</sup>, Heiko Goelzer<sup>4,5</sup>, Nicholas R. Golledge<sup>6,7</sup>, Ralf Greve<sup>8</sup>, Philippe Huybrechts<sup>9</sup>, Jim Jordan<sup>10</sup>, Gunter Leguy<sup>11</sup>, Daniel Martin<sup>12</sup>, Mathieu Morlighem<sup>13</sup>, Frank Pattyn<sup>5</sup>, David Pollard<sup>14</sup>, Aurelien Quiquet<sup>15</sup>, Christian Rodehacke<sup>16</sup>, Helene Seroussi<sup>17</sup>, Johannes Sutter<sup>18,19</sup>, Tong Zhang<sup>20</sup>, Jonas Van Breedam<sup>9</sup>, Robert DeConto<sup>21</sup>, Christophe Dumas<sup>15</sup>, Julius Garbe<sup>1,3</sup>, G. Hilmar Gudmundsson<sup>10</sup>, Matthew J. Hoffman<sup>20</sup>, Angelika Humbert<sup>18,22</sup>,  
10 Thomas Kleiner<sup>18</sup>, William Lipscomb<sup>11</sup>, Malte Meinshausen<sup>23,1</sup>, Esmond Ng<sup>12</sup>, Mauro Perego<sup>24</sup>, Stephen F. Price<sup>20</sup>, Fuyuki Saito<sup>25</sup>, Nicole-Jeanne Schlegel<sup>17</sup>, Sainan Sun<sup>5</sup>, Roderik S.W. van de Wal<sup>4,26</sup>

<sup>1</sup> Potsdam Institute for Climate Impact Research, Potsdam, Potsdam, Germany

<sup>2</sup> LDEO, Columbia University, New York, USA

<sup>3</sup> Institute of Physics and Astronomy, University of Potsdam, Potsdam, 14476, Germany

- 15 <sup>4</sup> Institute for Marine and Atmospheric research Utrecht, Utrecht University, The Netherlands

<sup>5</sup> Laboratoire de Glaciologie, Université libre de Bruxelles (ULB), Brussels, Belgium

<sup>6</sup> Antarctic Research Centre, Victoria University of Wellington, Wellington 6140, New Zealand

<sup>7</sup> GNS Science, Avalon, Lower Hutt 5011, New Zealand

<sup>8</sup> Institute of Low Temperature Science, Hokkaido University, Sapporo 060-0819, Japan

- 20 <sup>9</sup> Department of Geography, Vrije Universiteit Brussel, Brussels, Belgium

<sup>10</sup> Department of Geography and Environmental Sciences, University of Northumbria, Newcastle. UK.

<sup>11</sup> Climate and Global Dynamics Laboratory, National Center for Atmospheric Research, Boulder, CO, USA

<sup>12</sup> Lawrence Berkeley National Laboratory, Berkeley, CA, USA

<sup>13</sup> Department of Earth System Science, University of California Irvine, Irvine CA, USA

- 25 <sup>14</sup> Earth and Environmental Systems Institute, Pennsylvania State University, University Park, Pennsylvania, USA.

<sup>15</sup> Laboratoire des Sciences du Climat et de l'Environnement, CEA/CNRS-INSU/UVSQ, Gif-sur-Yvette Cedex, France

<sup>16</sup> Danish Meteorological Institute, Arctic and Climate, Copenhagen, Denmark

<sup>17</sup> Jet Propulsion Laboratory, California Institute of Technology, Pasadena, CA, USA

<sup>18</sup> Alfred Wegener Institute Helmholtz Centre for Polar and Marine Research, Bremerhaven, Germany

- 30 <sup>19</sup> Physics Institute, University of Bern, Bern, Switzerland

<sup>20</sup> Theoretical Division, Los Alamos National Laboratory, Los Alamos, New Mexico, 87545, USA

<sup>21</sup> Department of Geosciences, University of Massachusetts, Amherst, Massachusetts, USA.

<sup>22</sup> Department of Geosciences, University of Bremen, Germany

<sup>23</sup> Climate & Energy College, School of Earth Sciences, University of Melbourne, Parkville, Victoria, Australia

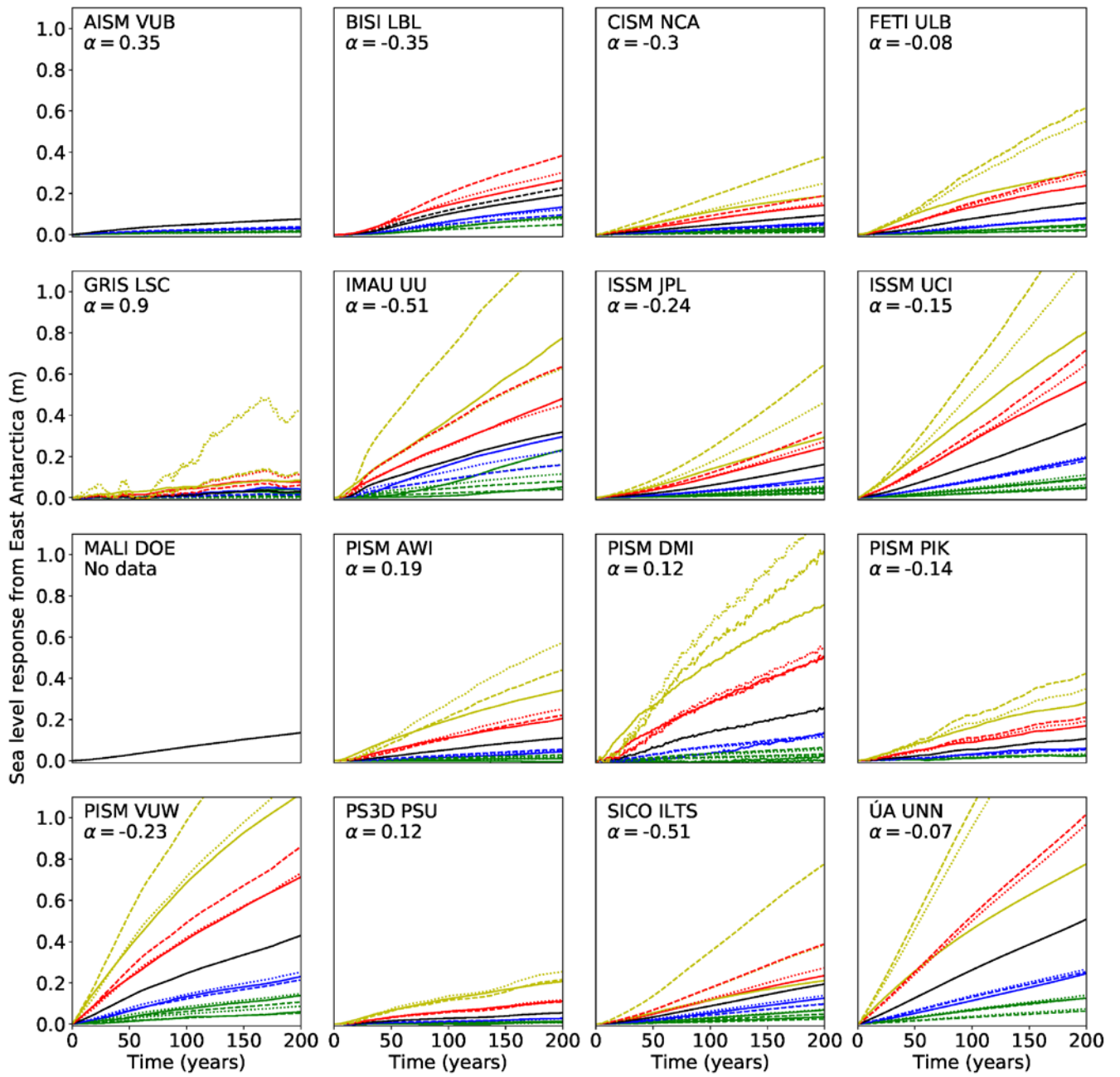
- 35 <sup>24</sup> Center for Computing Research, Sandia National Laboratories, Albuquerque, New Mexico, 87185, USA

<sup>25</sup> Japan Agency for Marine-Earth Science and Technology, Yokohama, Japan

<sup>26</sup> Geosciences, Physical Geography, Utrecht University, Utrecht, the Netherlands

*Correspondence to:* Anders Levermann (anders.levermann@pik-potsdam.de)

## Figures



**Figure S1a: Linearity check for East Antarctica** as in Figure 1a but including the experiment 32 m/yr as yellow curves.

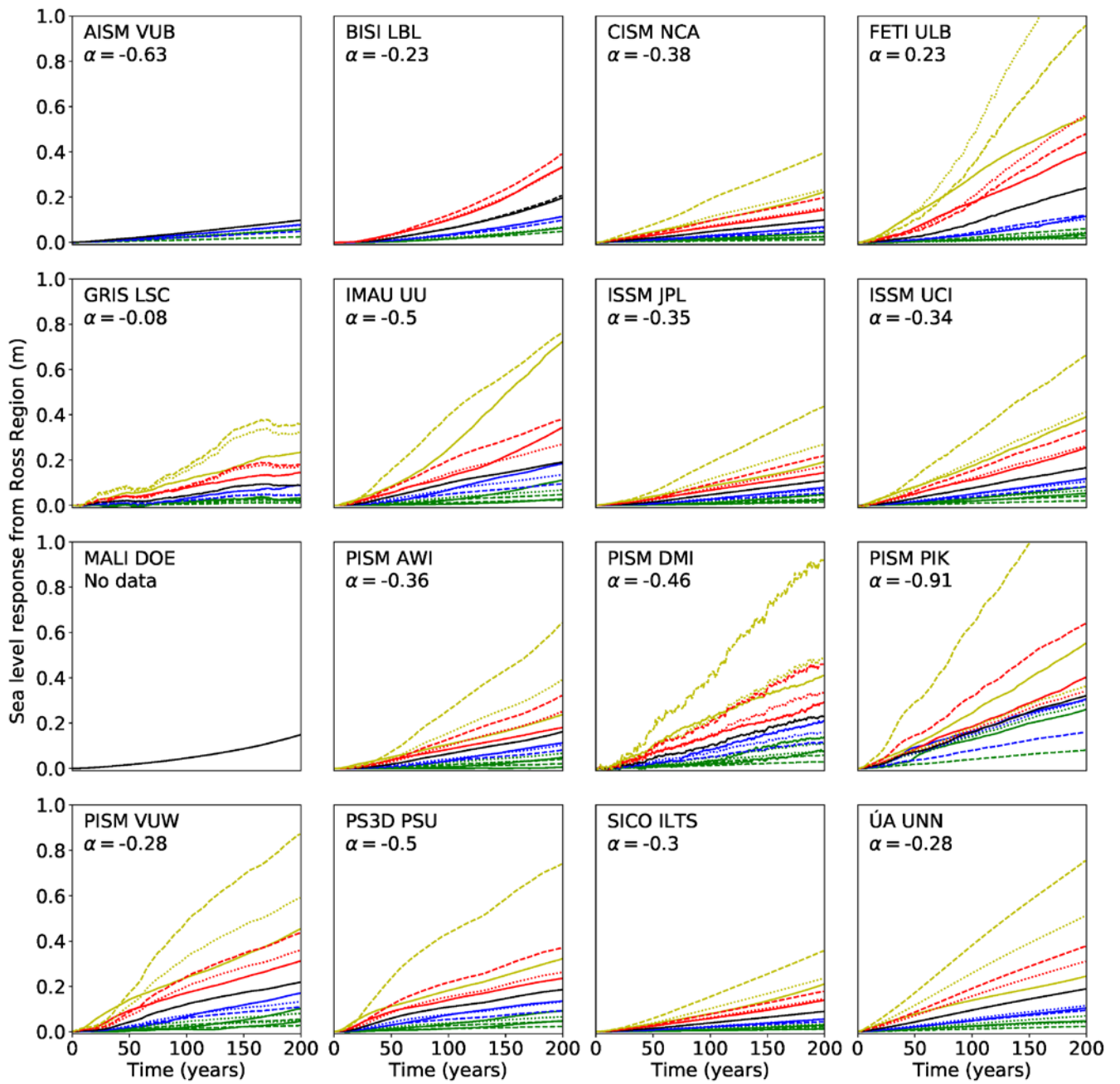


Figure S1b: Linearity check for the Ross region as in Figure S1a.

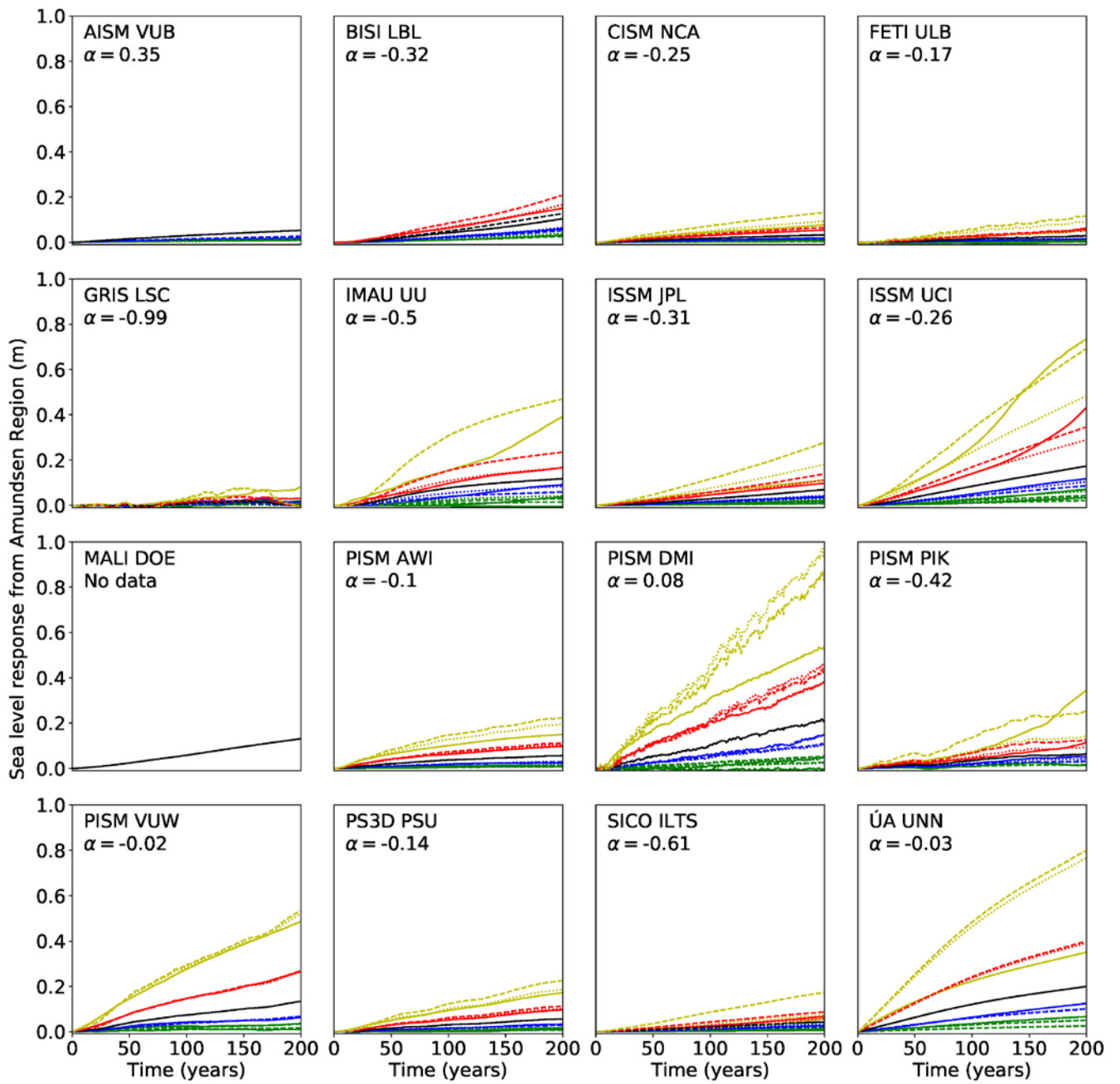


Figure S1c: Linearity check for the Amundsen Sea region as in Figure S1a.

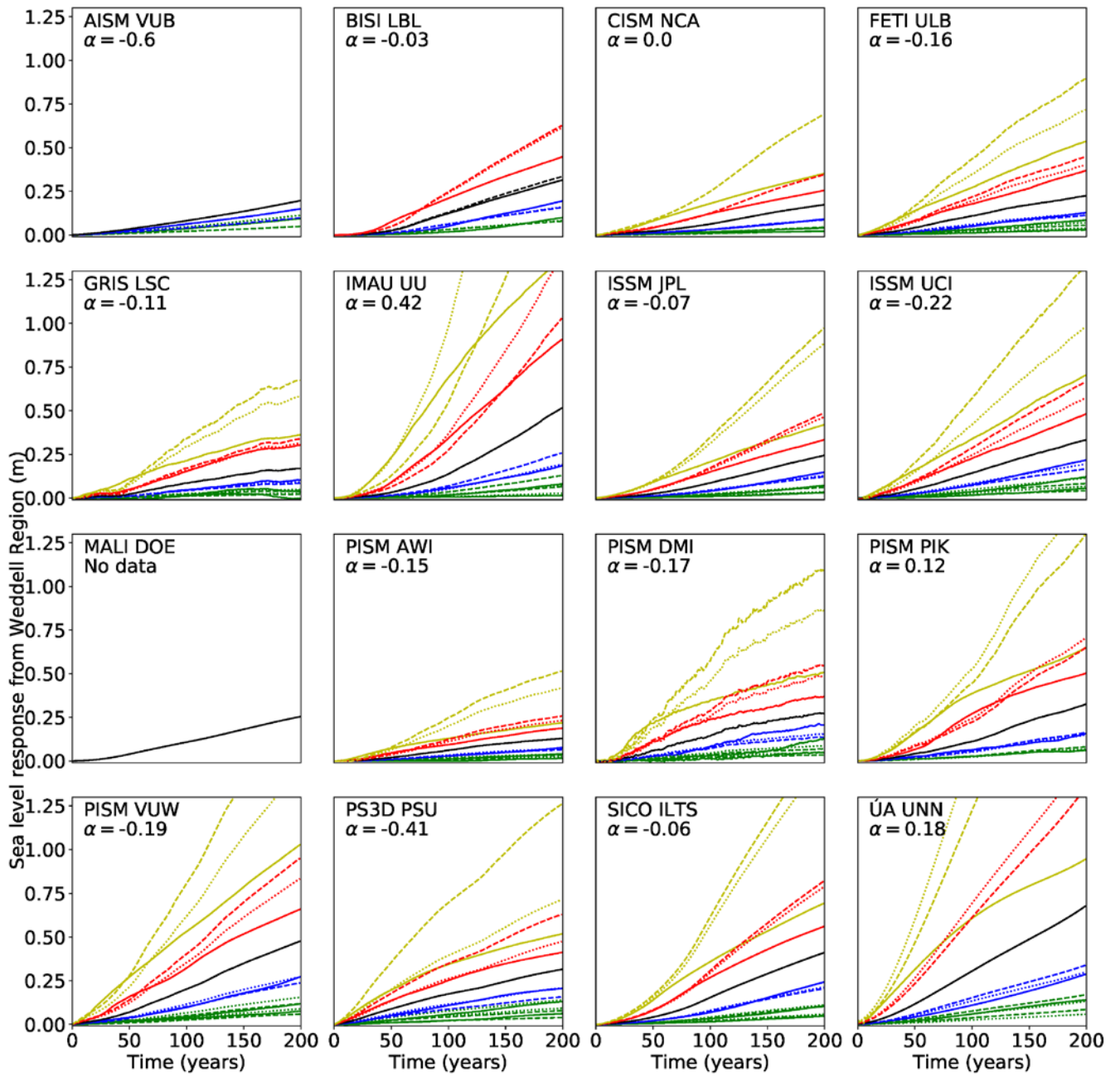


Figure S1d: Linearity check for the Weddell Sea region as in Figure S1a.

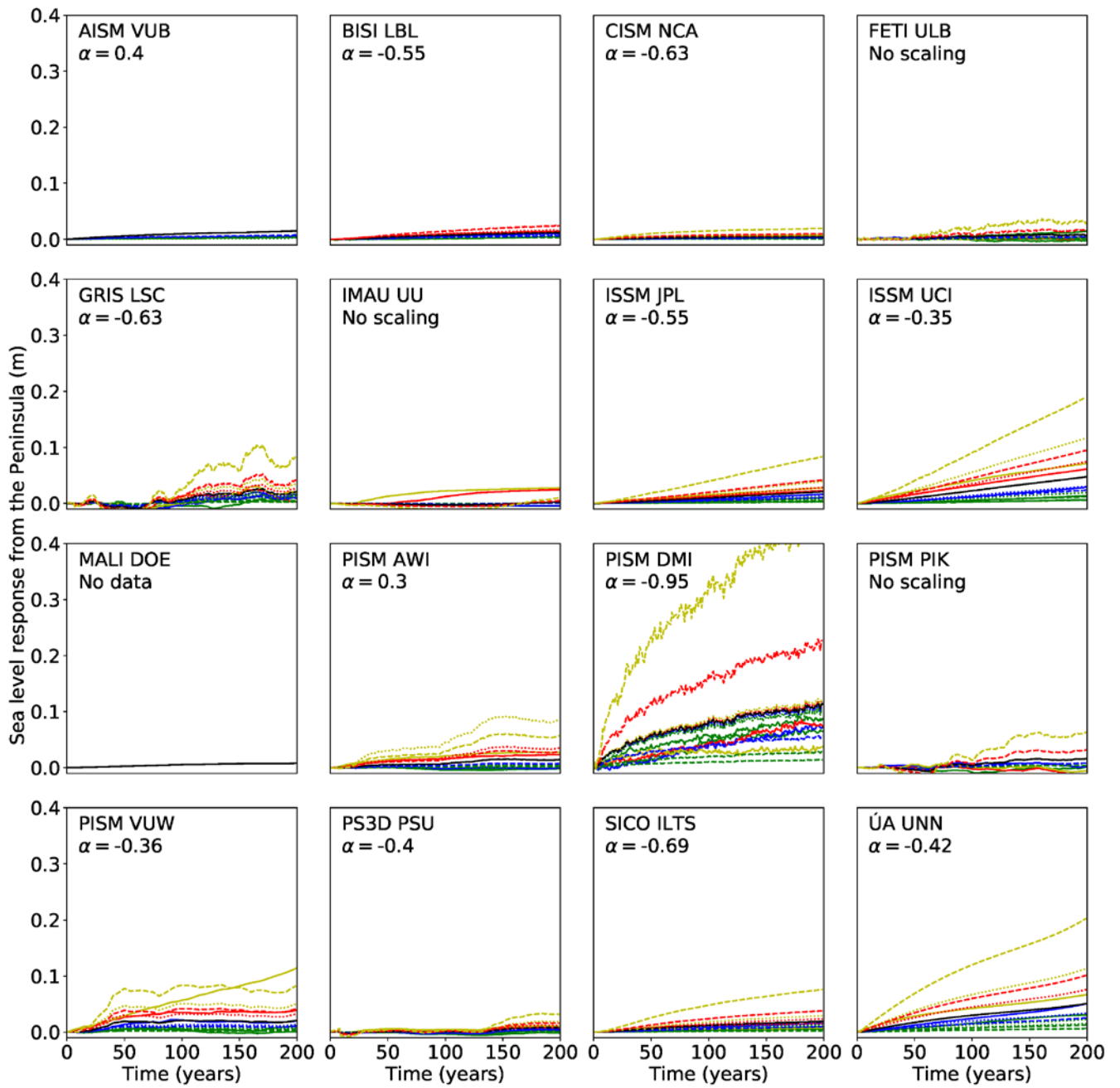


Figure S1e: Linearity check for the Antarctic Peninsula as in Figure S1a.