

Supplement of Earth Syst. Sci. Data, 12, 2725–2746, 2020
<https://doi.org/10.5194/essd-12-2725-2020-supplement>
© Author(s) 2020. This work is distributed under
the Creative Commons Attribution 4.0 License.



Open Access
Earth System
Science
Data

Supplement of

Improved estimate of global gross primary production for reproducing its long-term variation, 1982–2017

Yi Zheng et al.

Correspondence to: Wenping Yuan (yuanwpcn@126.com)

The copyright of individual parts of the supplement might differ from the CC BY 4.0 License.

Supplement:

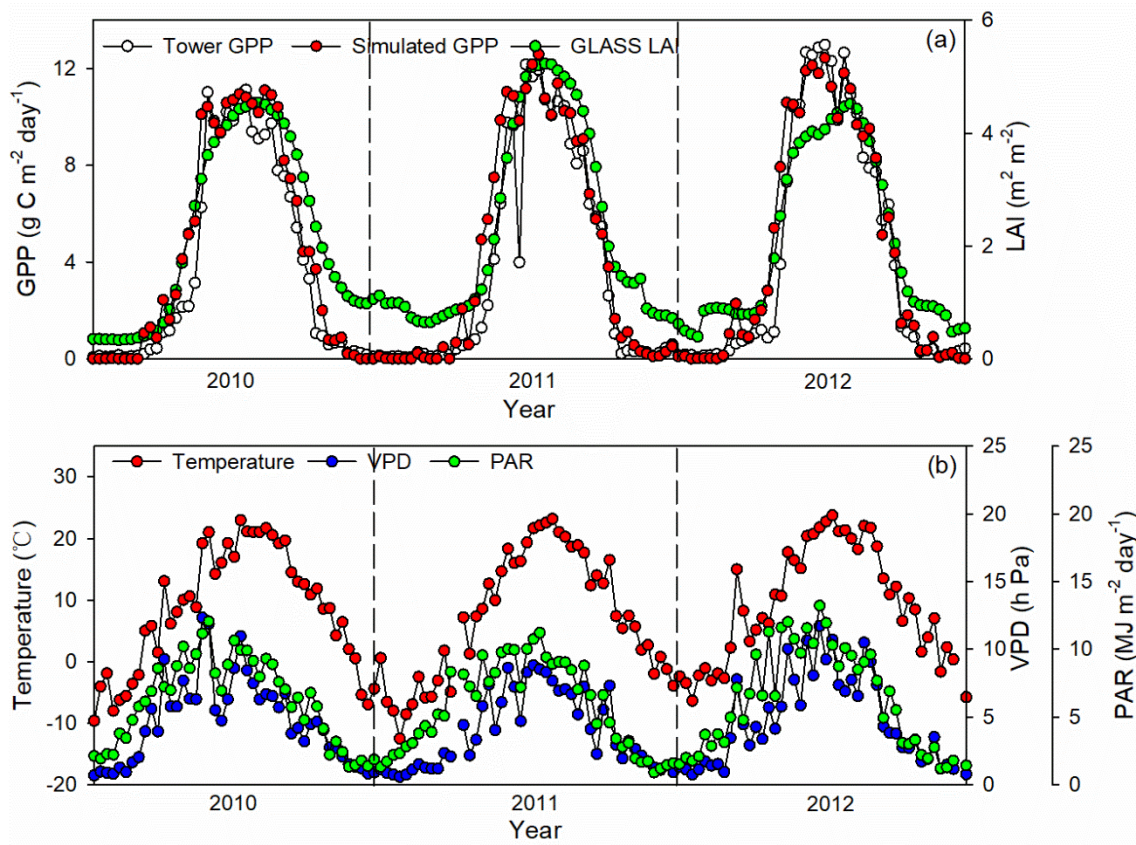


Figure S1: Time-series changes of (a) tower estimated GPP, model simulated GPP, and LAI, and (b) environmental factors (i.e., air temperature, VPD, and PAR) for low R^2 site in Fig. 2, taking US-UMB site as an example.

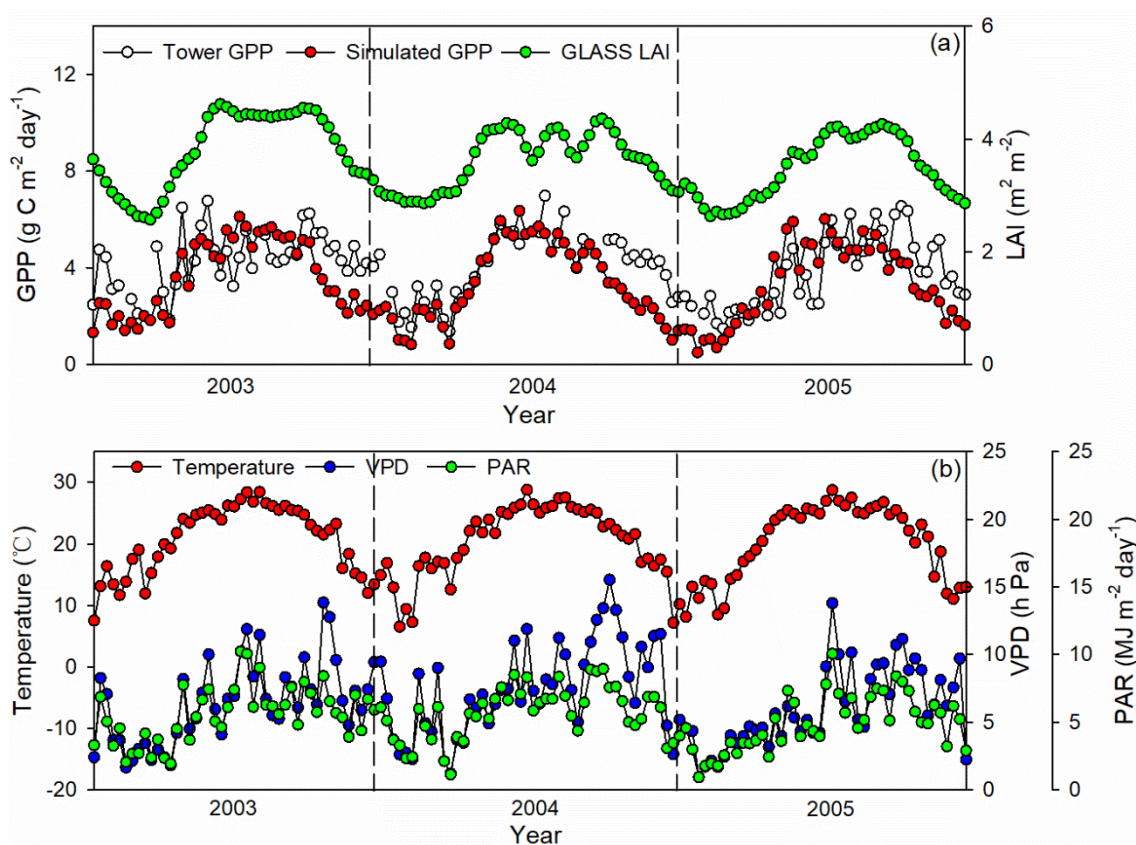


Figure S2: Time-series changes of (a) tower estimated GPP, model simulated GPP, and LAI, and (b) environmental factors (i.e., air temperature, VPD, and PAR) for low R^2 site in Fig. 2, taking CN-Din site as an example.

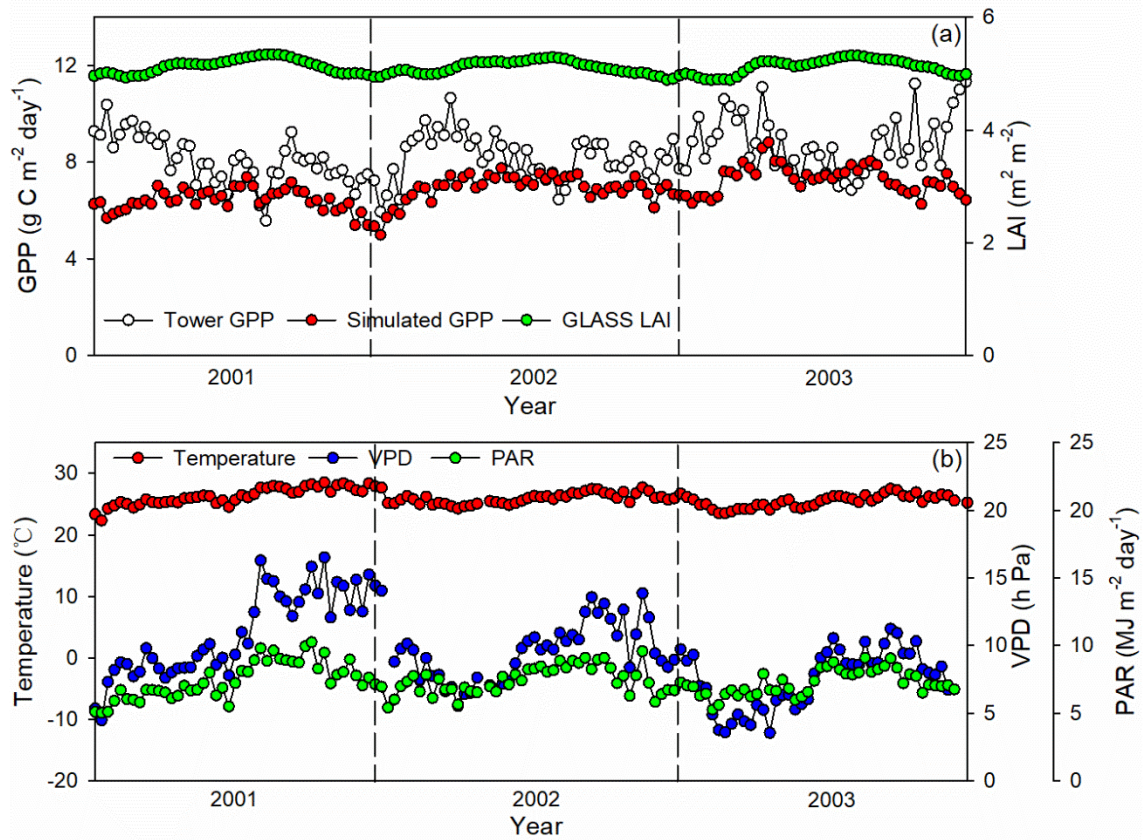


Figure S3: Time-series changes of (a) tower estimated GPP, model simulated GPP, and LAI, and (b) environmental factors (i.e., air temperature, VPD, and PAR) for low R^2 site in Fig. 2, taking Br-Sa3 site as an example.

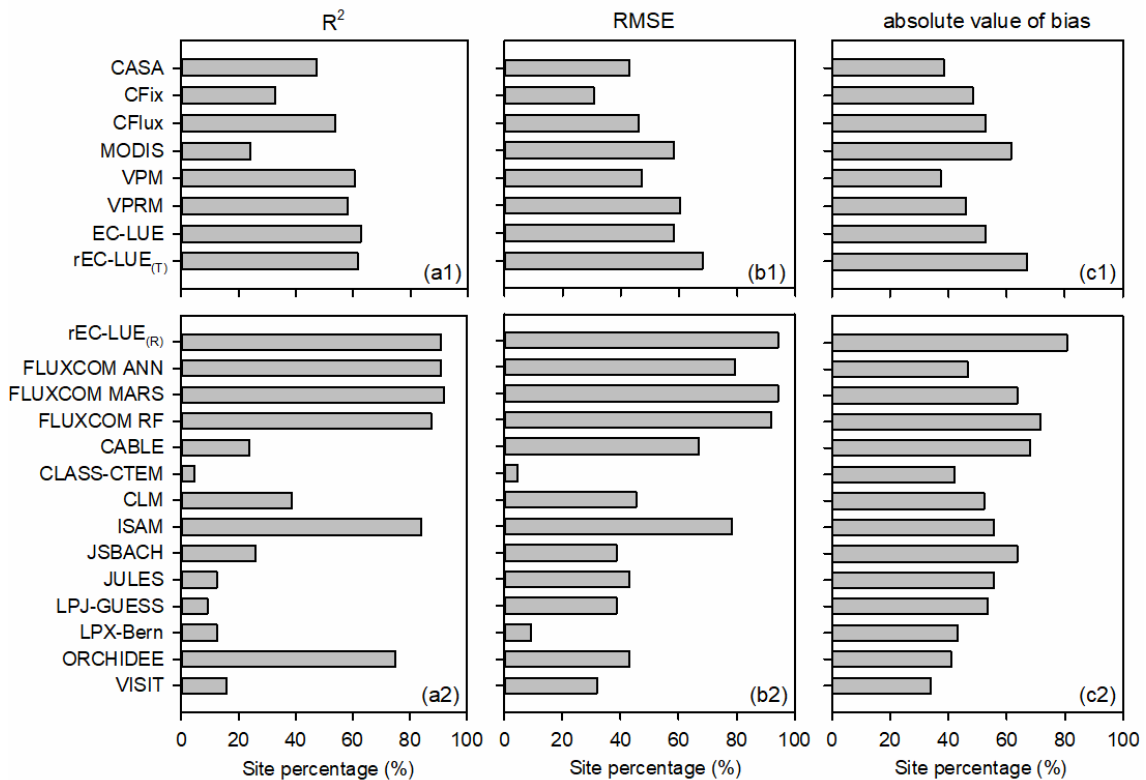


Figure S4: Percentage of sites for each model in Fig.4 where (a1, a2) R^2 of individual model $>$ averaged R^2 of all models, (b1, b2) RMSE of individual model $<$ averaged RMSE of all models, and (c1, c2) RMSE of individual model $<$ averaged absolute value of bias of all models. All the monthly GPP simulations in (a1)-(c1) derived from tower-derived meteorology data, and all the monthly GPP simulations in (a2)-(c2) derived from global reanalysis meteorology data.

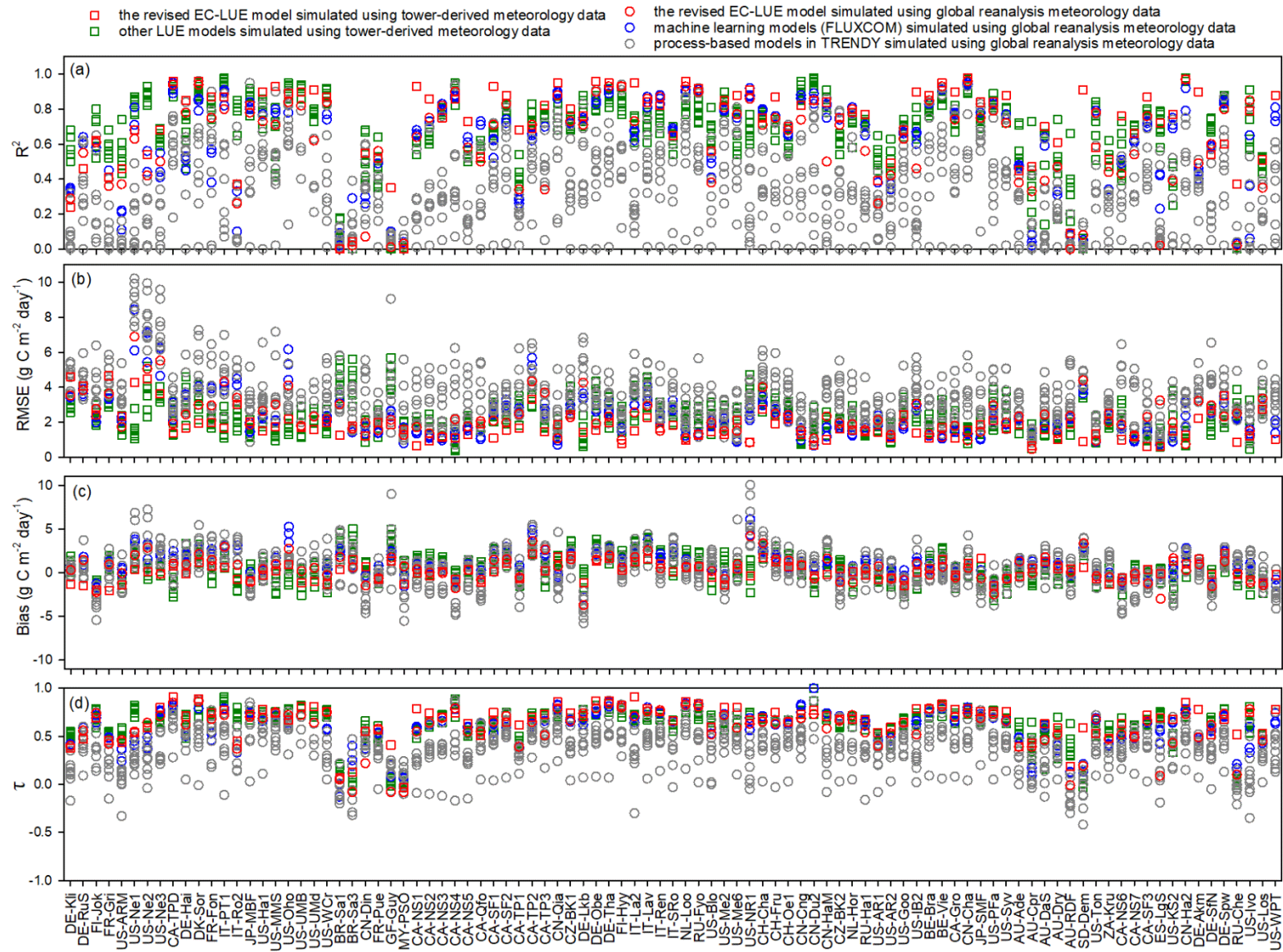


Figure S5: Site level comparisons between estimated GPP based on EC measurements and GPP simulations by the 22 models in Fig.4 at monthly step. This figure includes 8 LUE models (CASA, CFix, CFlux, MODIS, VPM, VPRM, EC-LUE, and the revised EC-LUE model) simulated using tower-derived meteorology data; the revised EC-LUE model, 3 machine learning models (FLUXCOM ANN, FLUXCOM MARS, and FLUXCOM RF), and 10 process-based biophysical models in TRENDY (CABLE, CLASS-CTEM, CLM, ISAM, JSBACH, JULES, LPJ-GUESS, LPX-Bern, ORCHIDEE, and VISIT) simulated using global reanalysis meteorology data.