

Figure S1. Patterns of valid observations of DW dataset from 2016 to 2023

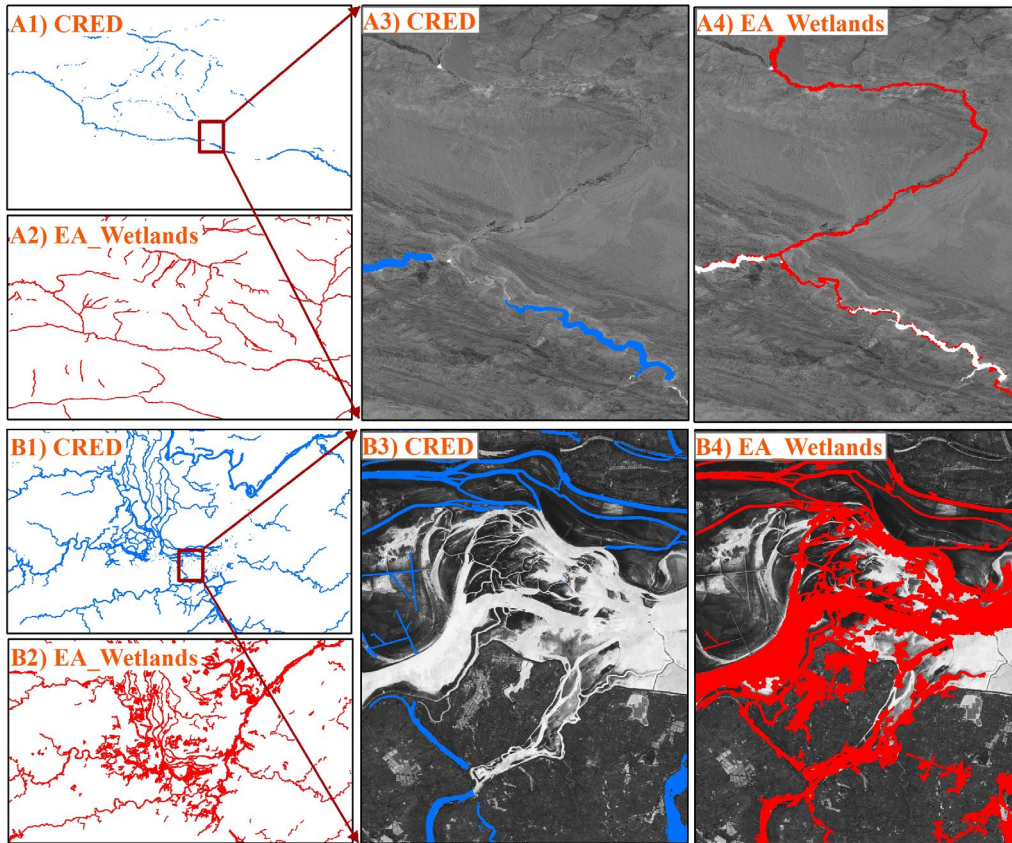


Figure S2. Spatial comparison of rivers between CRED and EA_Wetlands in 2021

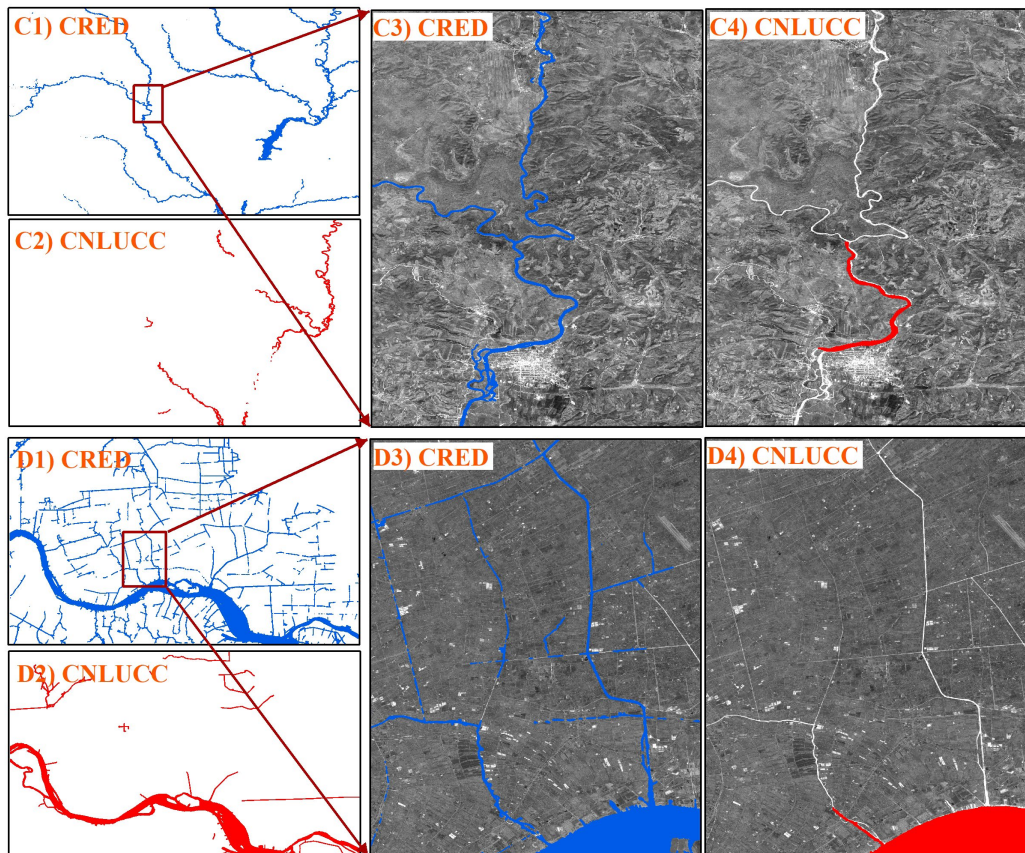


Figure S3. Spatial comparison of rivers between CRED and CNLUCC in 2020

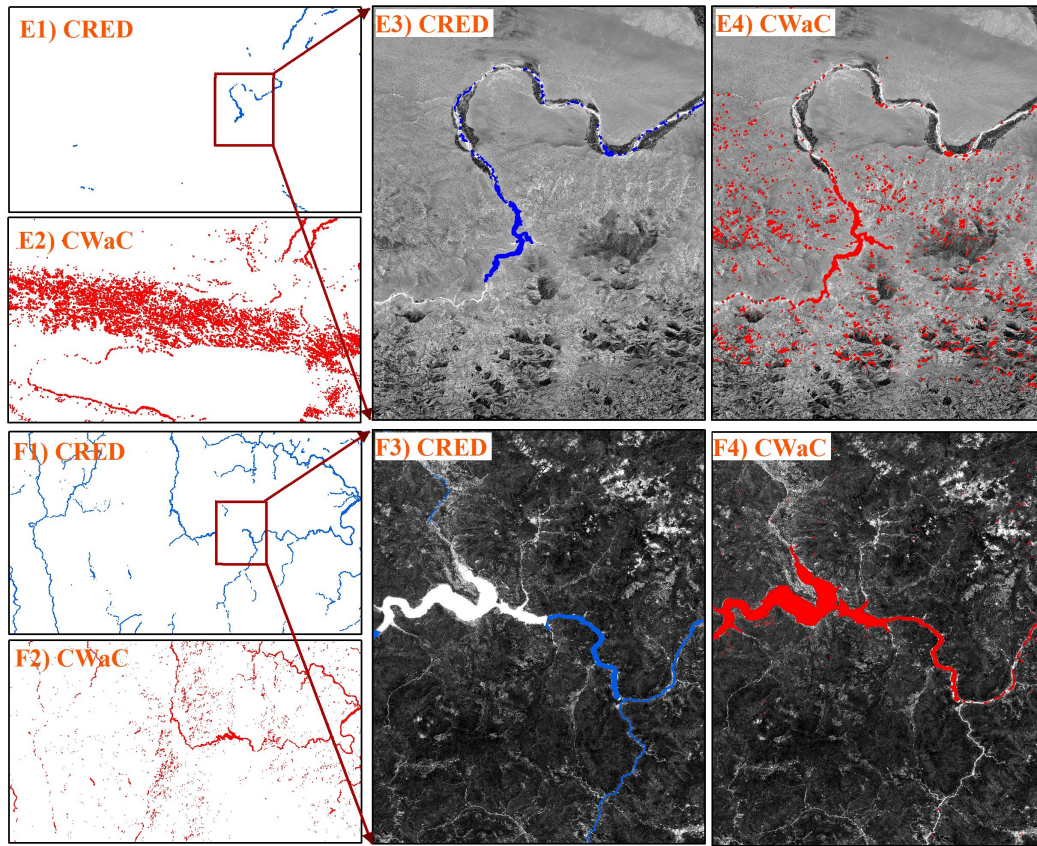
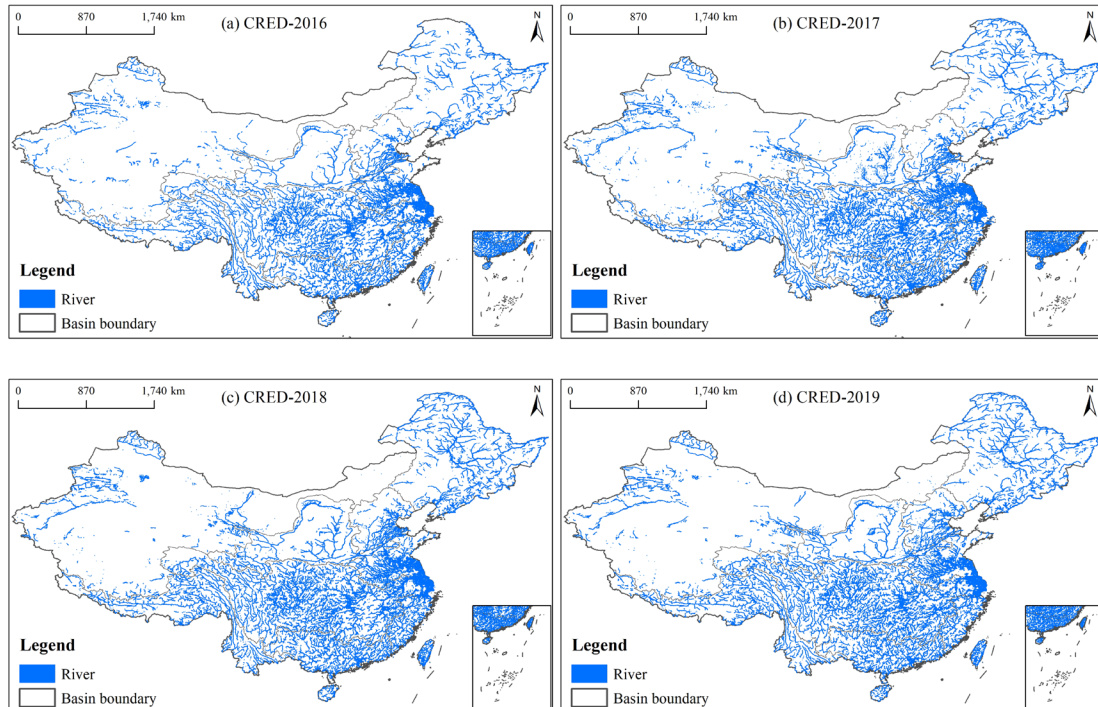


Figure S4. Spatial comparison of rivers between CRED and CEaC in 2020



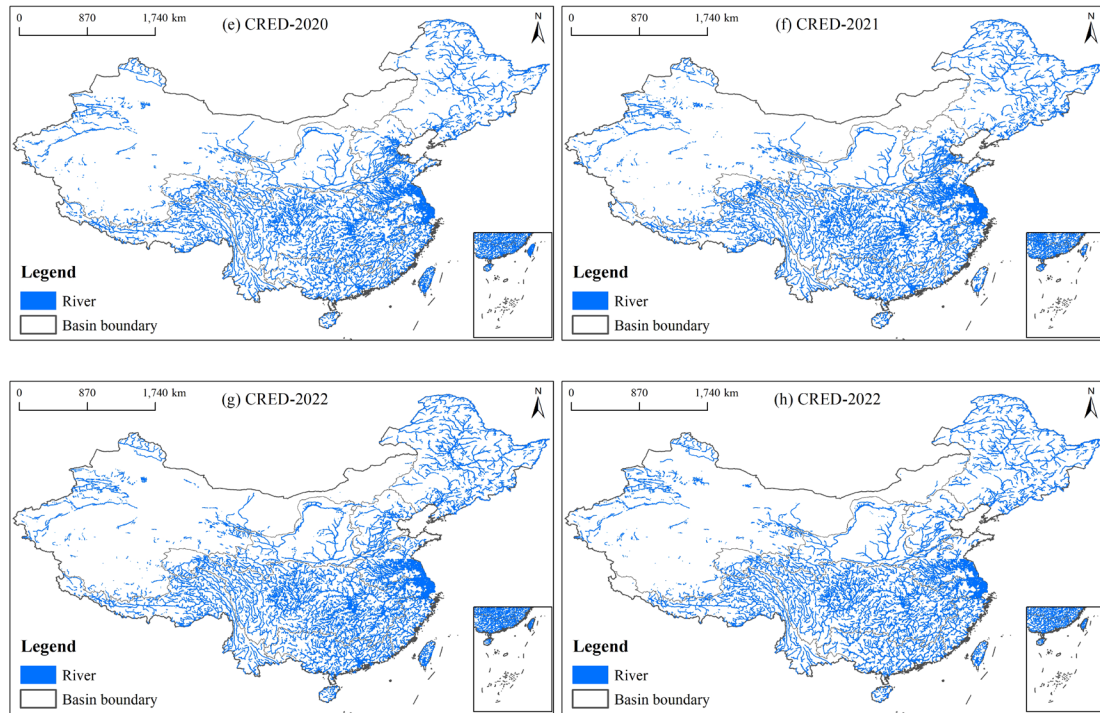


Figure S5. Spatial distribution of rivers in our CRED from 2016 to 2023