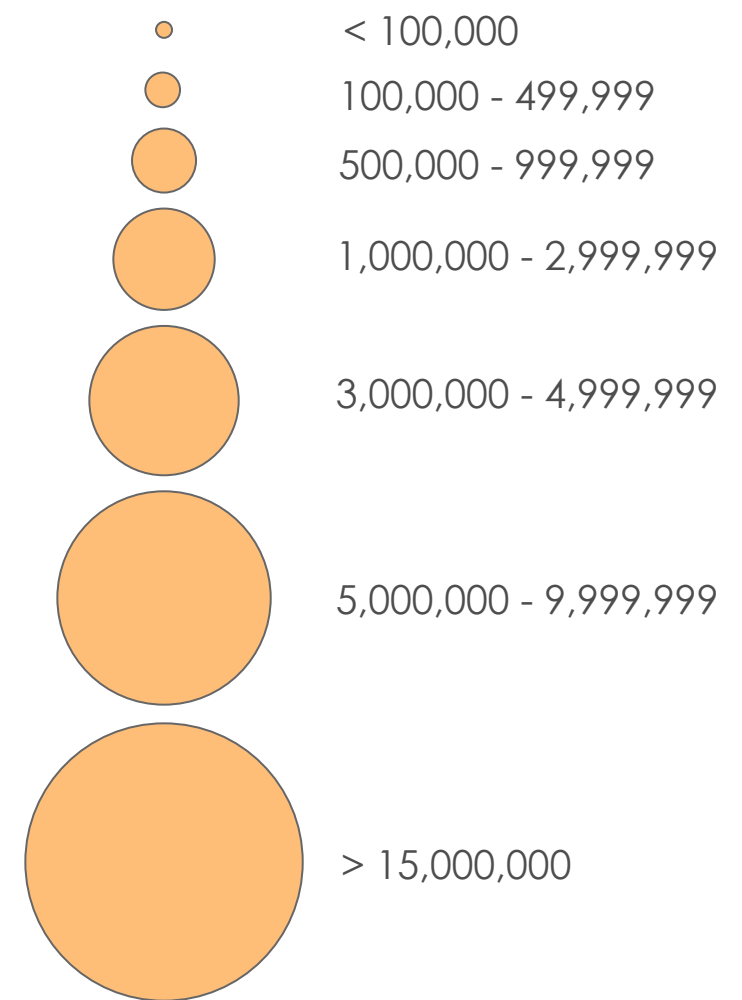

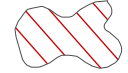


HUNGER-RELATED MORTALITY LIKELY AS IPC PHASE 4 OUTCOMES AND LARGE-SCALE ASSISTANCE NEEDS PERSIST

Peak population in need of emergency food assistance in 2019*



 Areas facing the highest risk of Famine in 2019, particularly in the absence of emergency food assistance

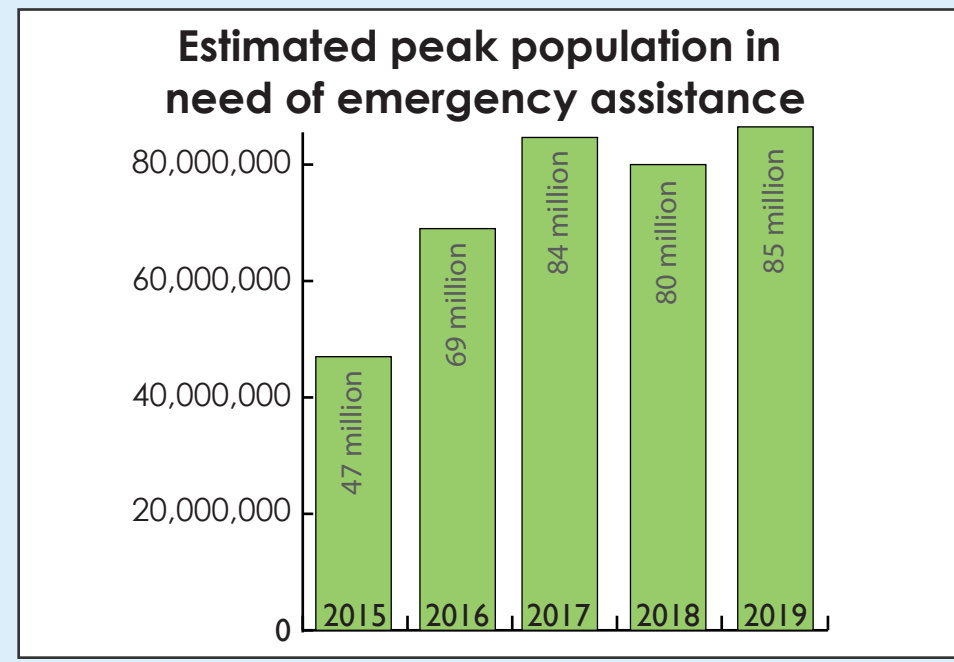
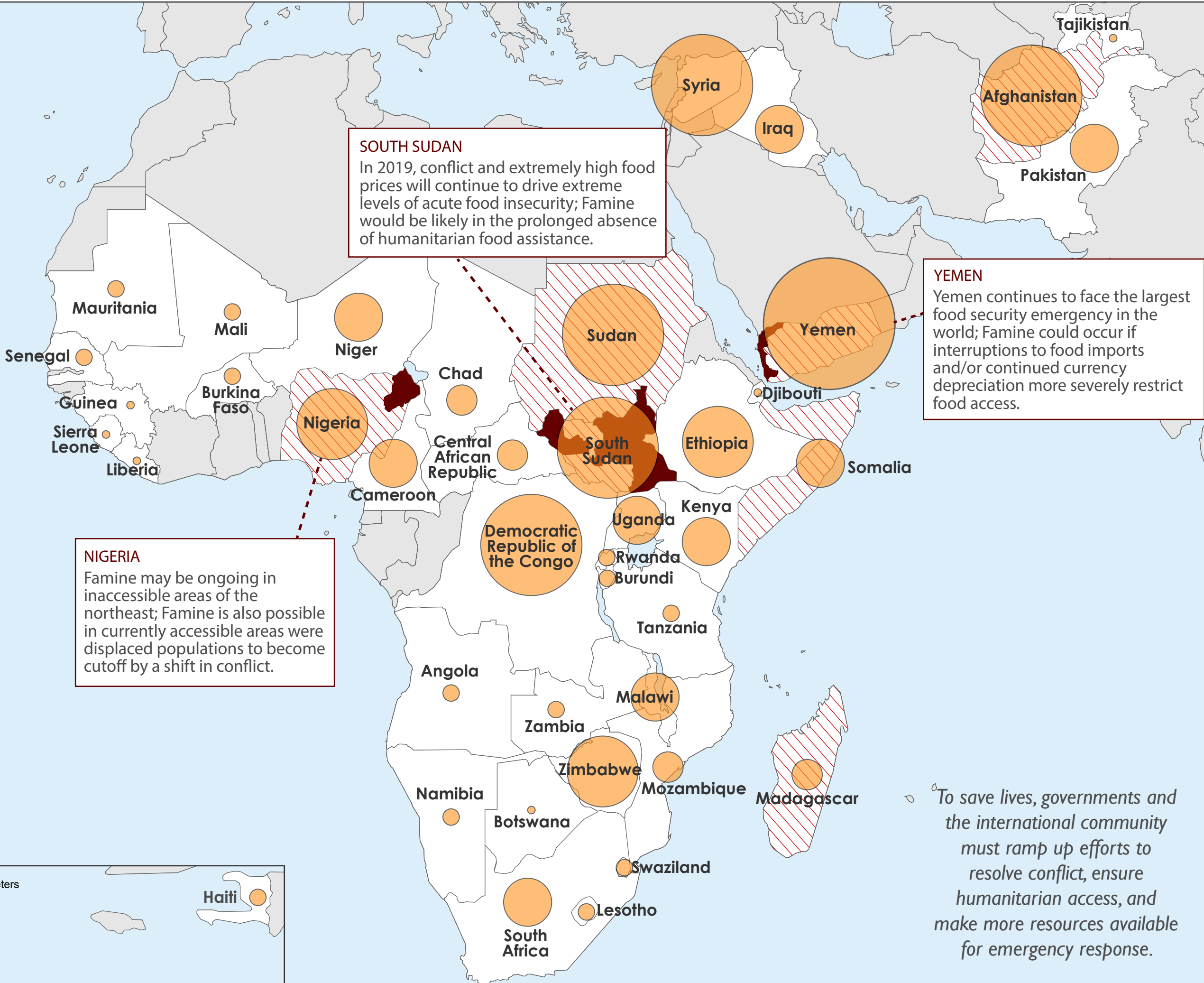
 Countries likely to have areas in Emergency (IPC Phase 4) in 2019

*FEWS NET defines the population in need of emergency food assistance as those likely to face Crisis (IPC Phase 3) or worse acute food insecurity in the absence of emergency food assistance.

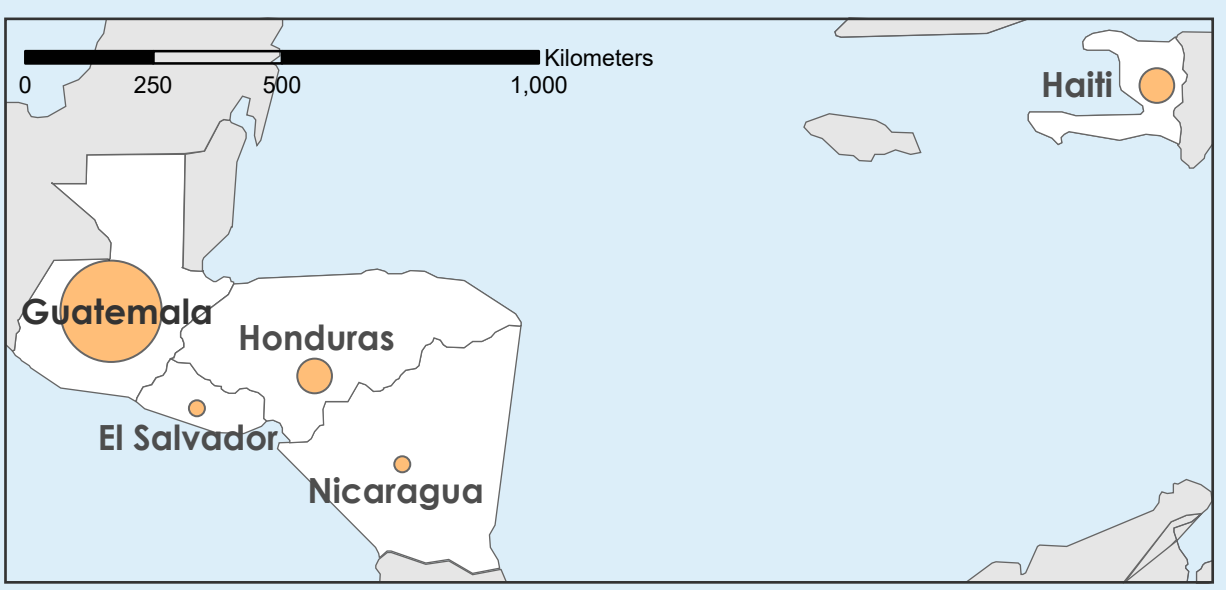
**In 2018, FEWS NET updated its global estimates to include Cameroon. This product does not capture all countries with humanitarian food assistance needs (e.g. North Korea, Venezuela) due to data gaps which limit the estimation of food insecure populations in these countries.

Famine threatens South Sudan, Yemen, and northeast Nigeria

Across 46 countries,** **85 million** people require emergency food assistance in 2019, **80% more** than in 2015.



Data sources: FEWS NET, OCHA, Southern Africa RVAC



Estimates reflect the peak food insecure population expected between January - December 2019.
Detailed reports at: www.fews.net

To save lives, governments and the international community must ramp up efforts to resolve conflict, ensure humanitarian access, and make more resources available for emergency response.



FEWS NET is a USAID-funded activity. The content of this report does not necessarily reflect the view of the United States Agency for International Development or the United States Government.