

Supplement of Geosci. Model Dev., 13, 3947–3973, 2020  
<https://doi.org/10.5194/gmd-13-3947-2020-supplement>  
© Author(s) 2020. This work is distributed under  
the Creative Commons Attribution 4.0 License.



*Supplement of*

**An exploratory performance assessment of the CHIMERE model (version 2017r4) for the northwestern Iberian Peninsula and the summer season**

**Swen Brands et al.**

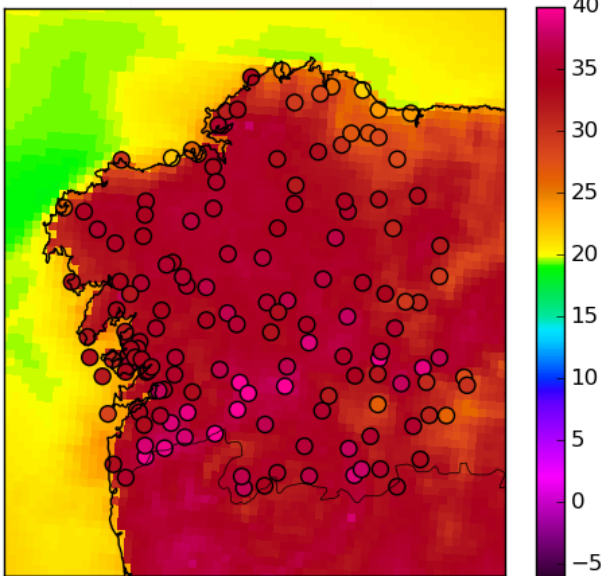
*Correspondence to:* Swen Brands ([swen.brands@gmail.com](mailto:swen.brands@gmail.com))

The copyright of individual parts of the supplement might differ from the CC BY 4.0 License.

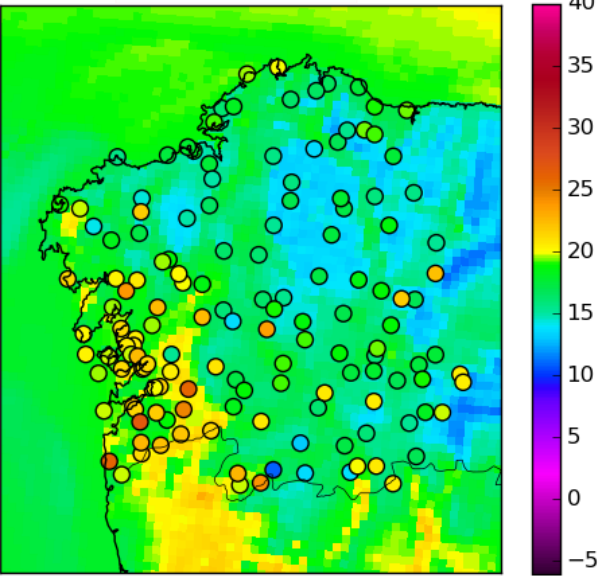
Supplementary Figure 1) Observed daily station values plotted upon the respective 4km WRF forecasts for a typical summertime heat day (05/08/2018), (a) maximum temperature, (b) minimum temperature, (c) maximum wind speed, (d) average wind speed.

Supplementary Figure 2) As Figure 4, but for background sides only.

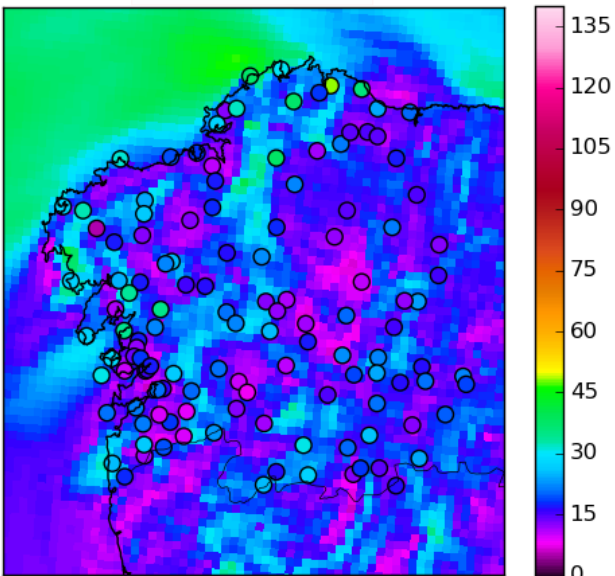
a) Maximum temperature ( $^{\circ}\text{C}$ )



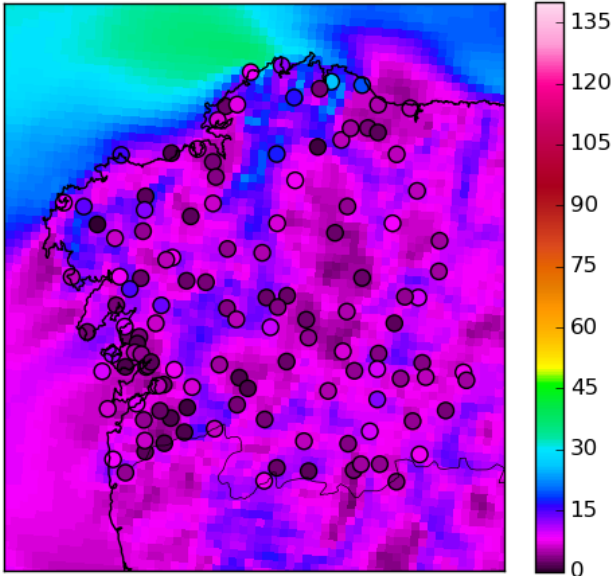
b) Minimum temperature ( $^{\circ}\text{C}$ )



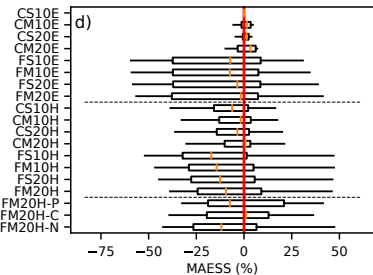
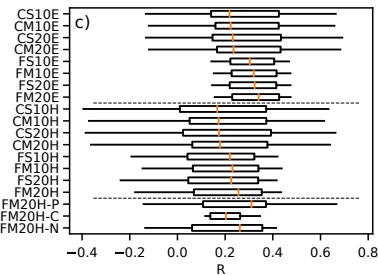
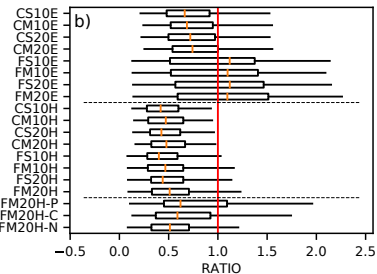
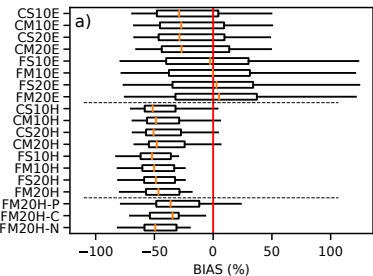
c) Maximum wind speed (km/h)



d) Average wind speed (km/h)



NO2



O3

