



Supplement of

Evaluation of the NAQFC driven by the NOAA Global Forecast System (version 16): comparison with the WRF-CMAQ during the summer 2019 FIREX-AQ campaign

Youhua Tang et al.

Correspondence to: Youhua Tang (youhua.tang@noaa.gov)

The copyright of individual parts of the supplement might differ from the article licence.

Supplemental Figures

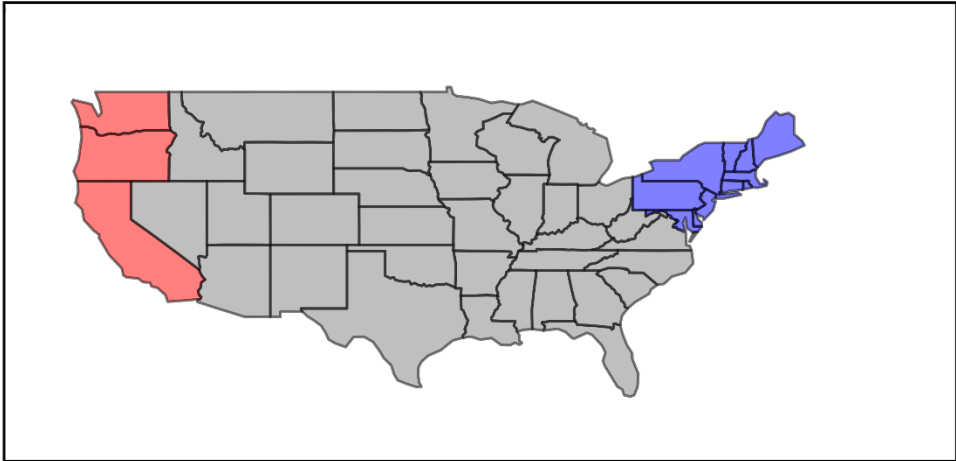


Figure S1, U.S. West (red) and Northeast (Blue) regions.

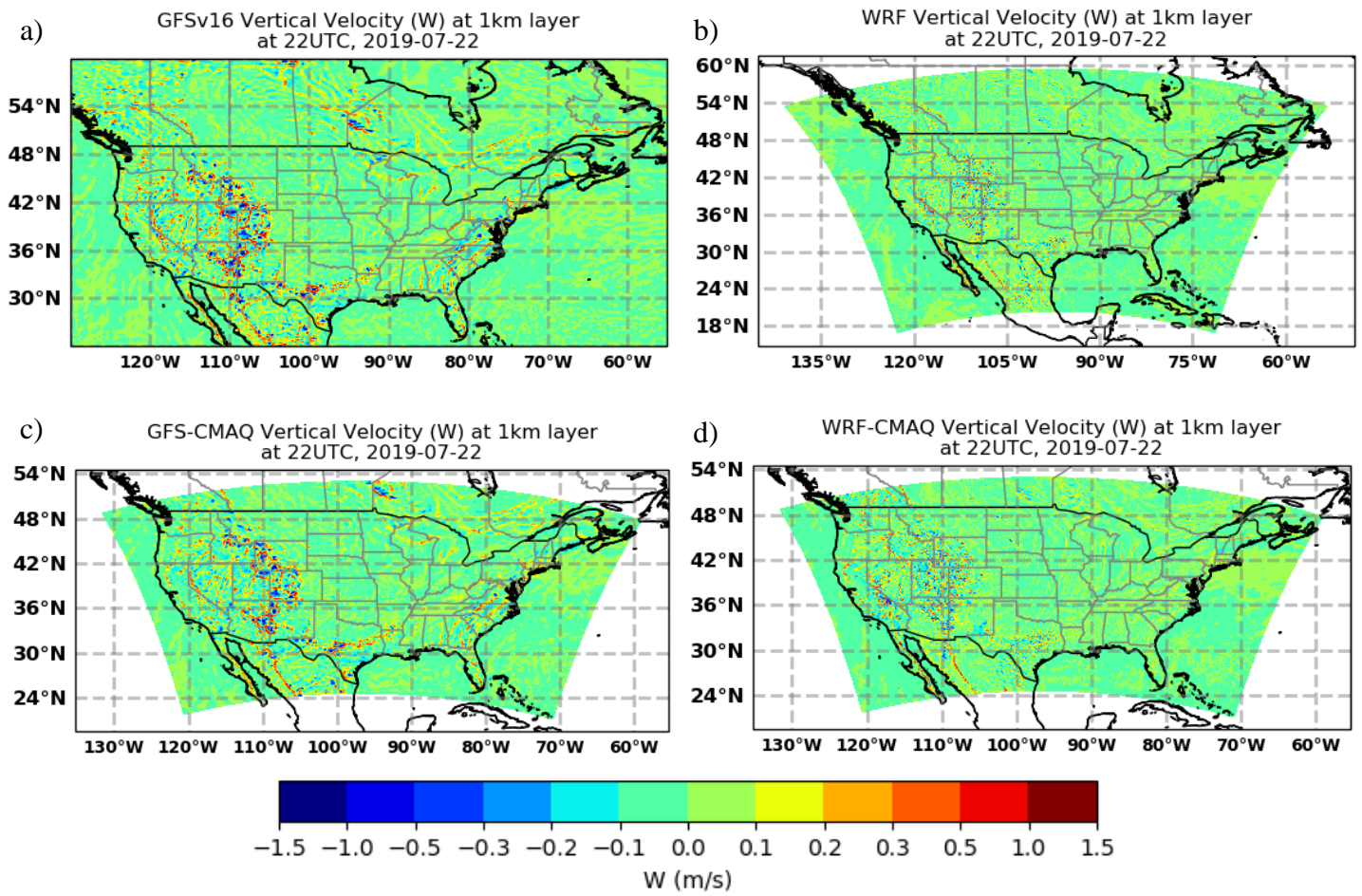


Figure S2, The original vertical velocities of GFS (a) and WRF (b) compared to the CMAQ diagnosed W in GFS-CMAQ (c) and WRF-CMAQ (d)

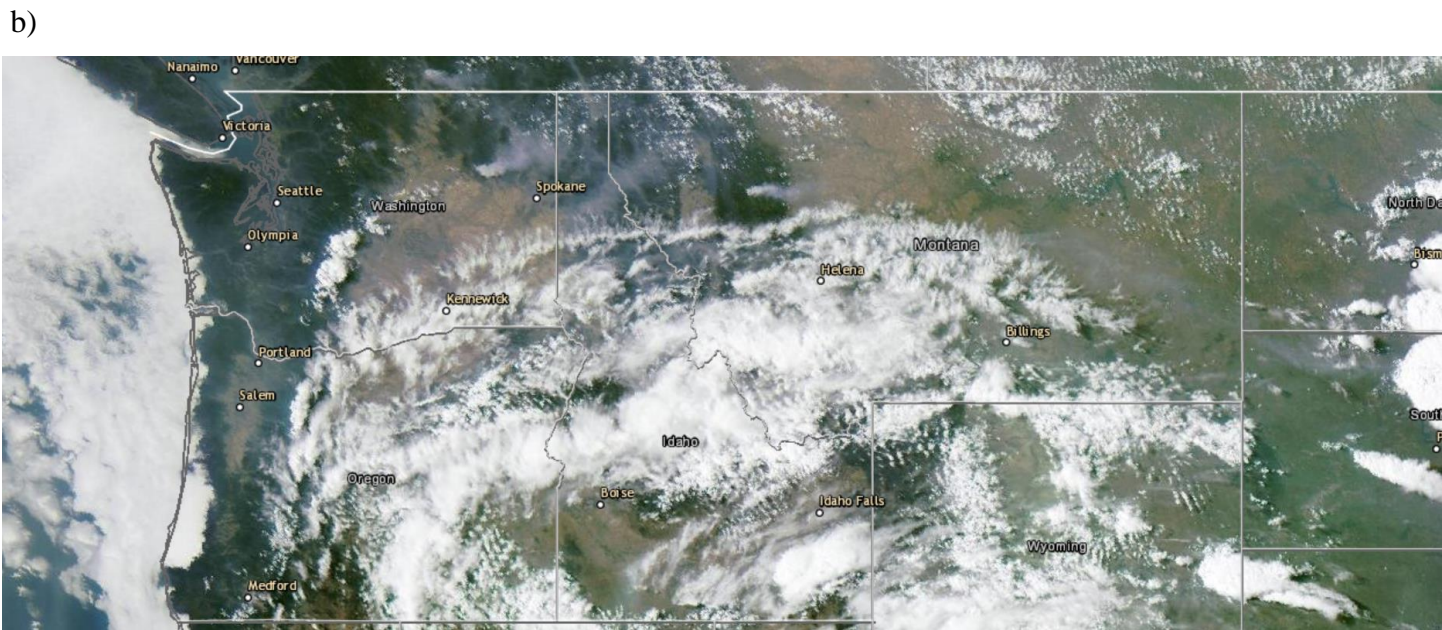
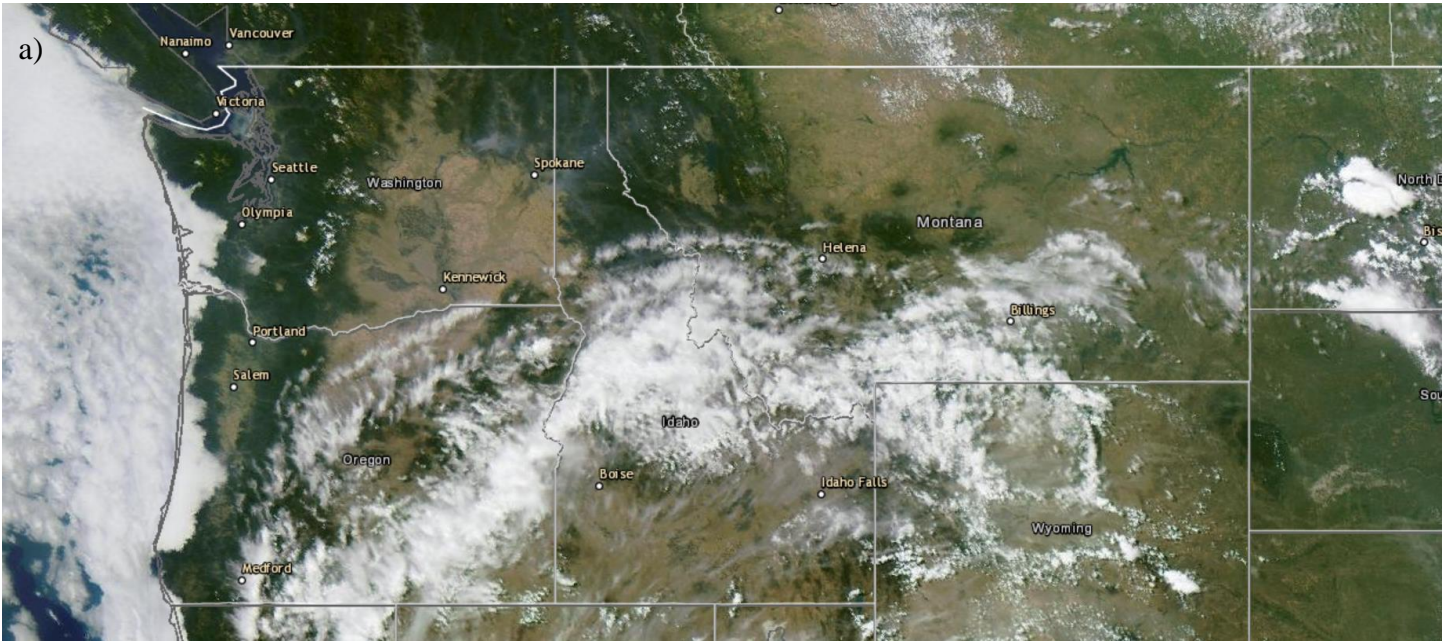


Figure S3, GOES-16 true color image (NOAA Aerosol Watch) at 19:41UTC (a), and 23:01UTC (b), 06 August, 2019

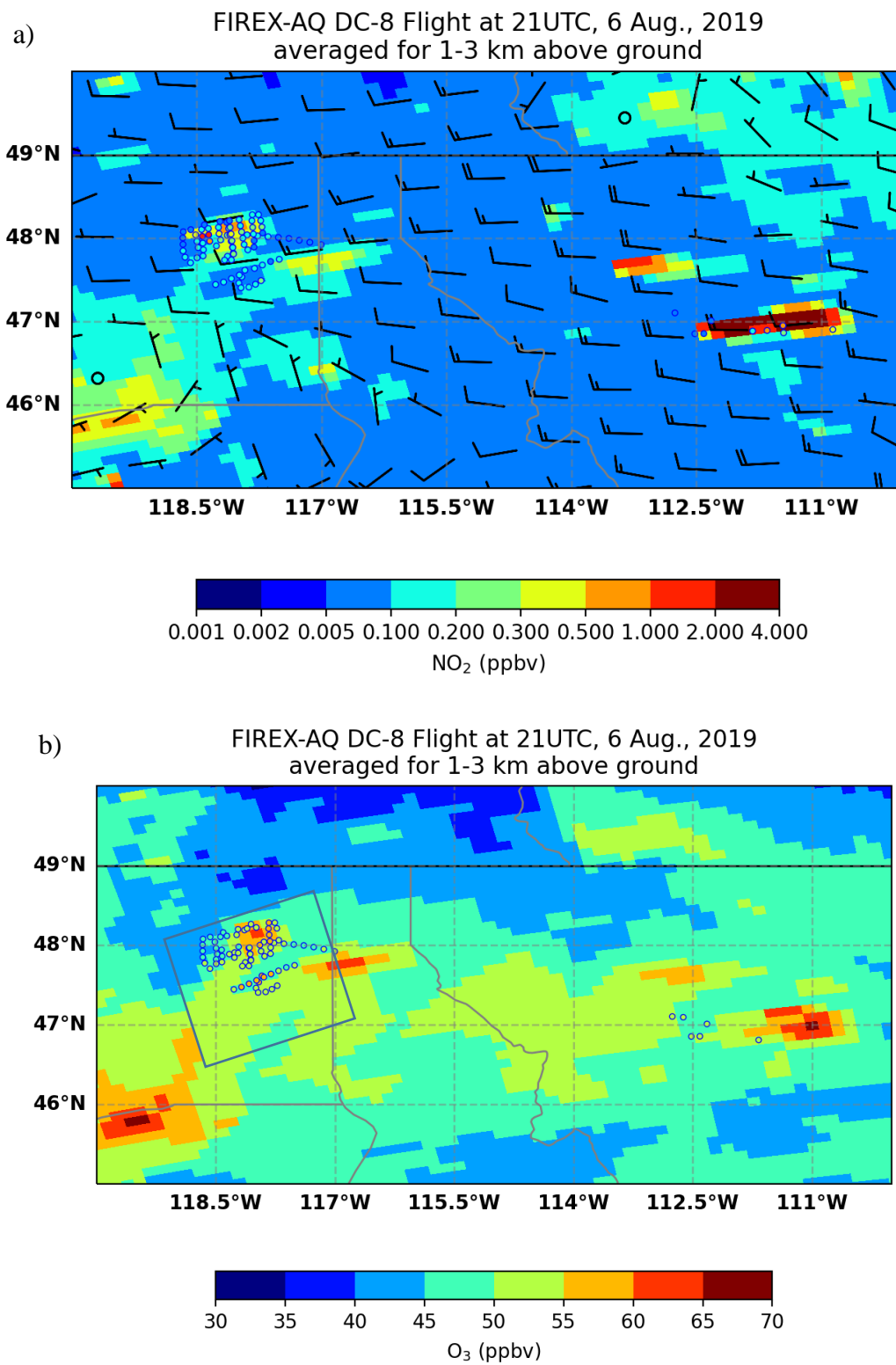


Figure S4, GFS-CMAQ vertical averaged NO₂ (a) and O₃ (b) for 1-3 km above ground at 21UTC compared to the DC-8 observations on 6 Aug., 2019. The plot a also shows the corresponding GFS wind field.