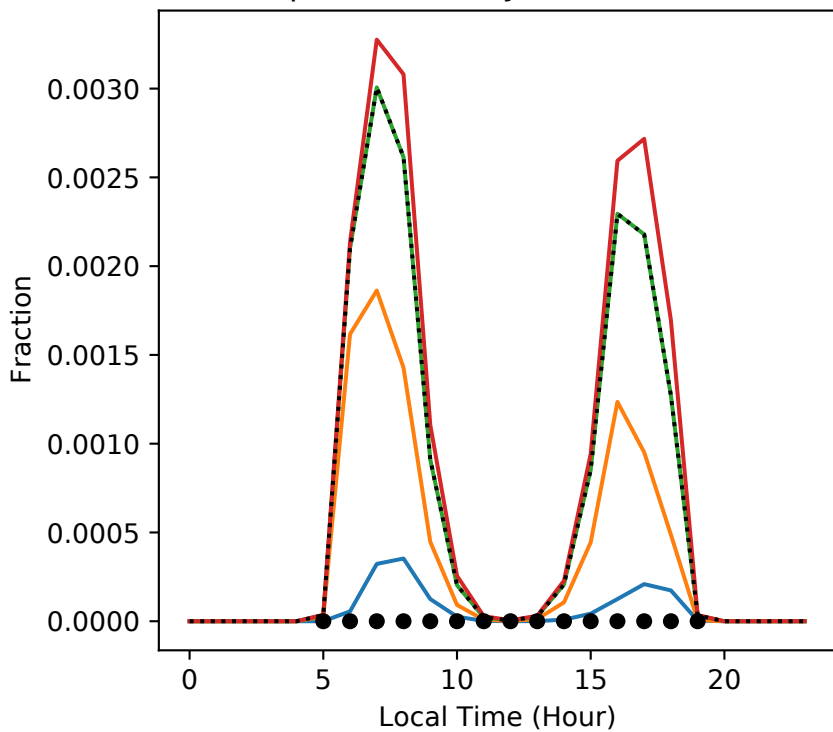
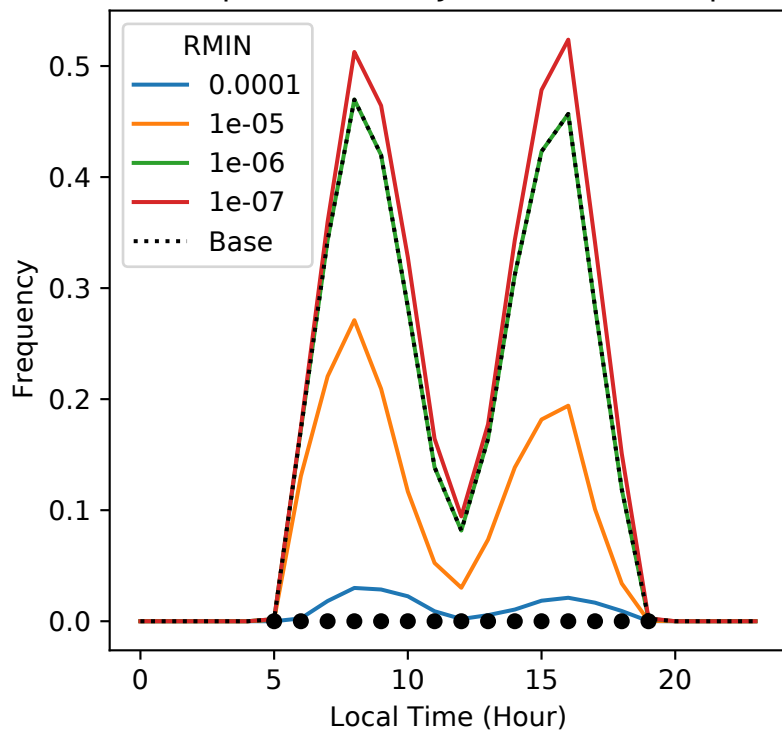


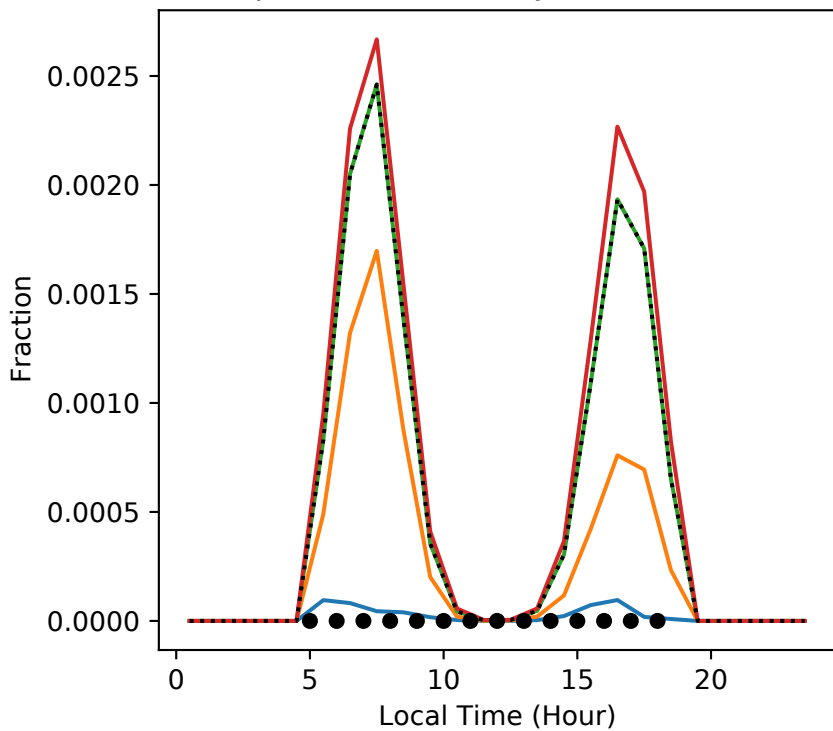
(a) Subtropical Atlantic Jan Rainbow Fraction



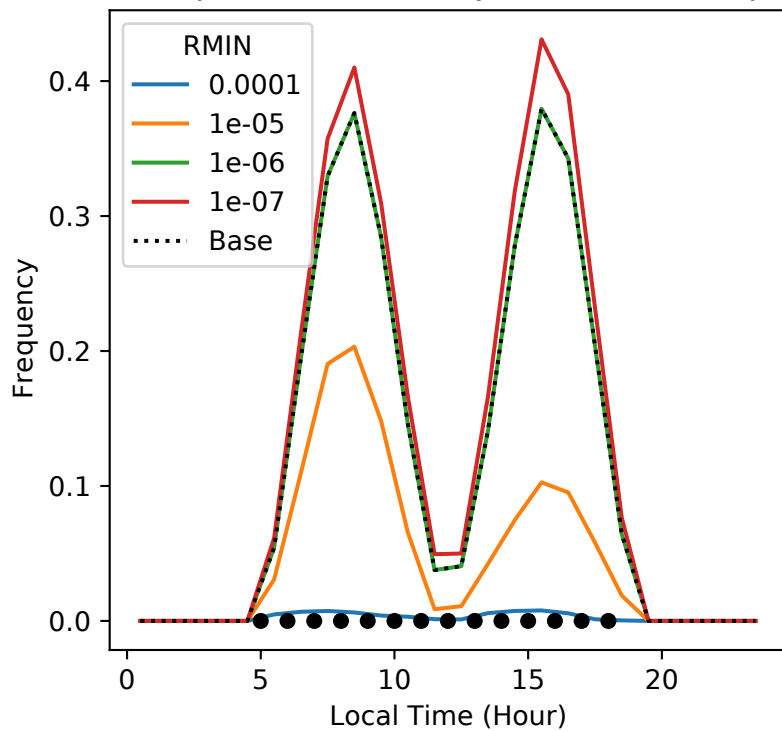
(b) Subtropical Atlantic Jan Rainbow Frequency



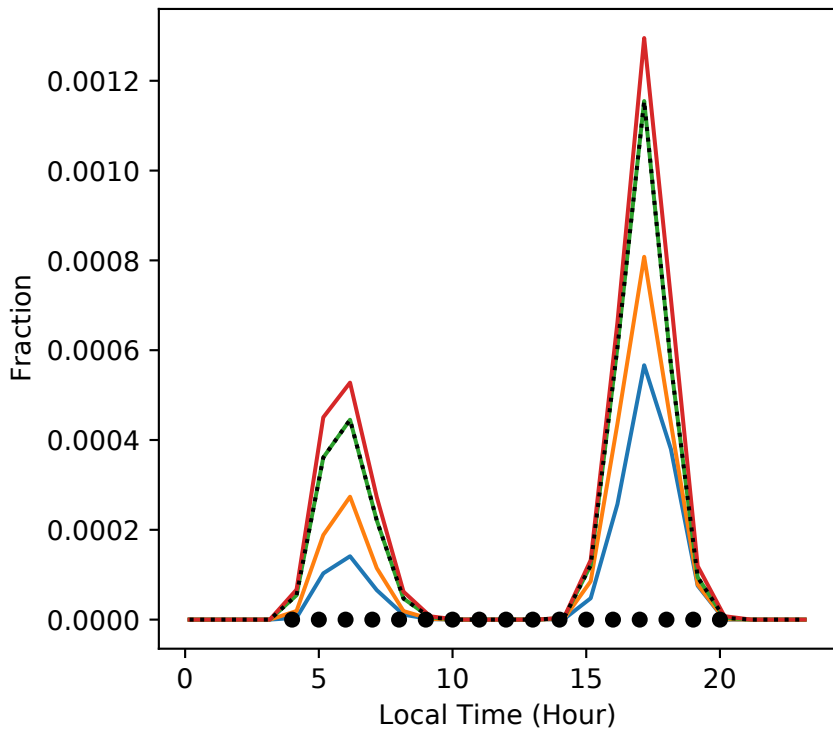
(c) Subtropical N. E. Pacific Jan Rainbow Fraction



(d) Subtropical N. E. Pacific Jan Rainbow Frequency



(e) S. America Jan Rainbow Fraction



(f) S. America Jan Rainbow Frequency

