



Supplement of

Biological nitrogen fixation of natural and agricultural vegetation simulated with LPJmL 5.7.9

Stephen Björn Wirth et al.

Correspondence to: Stephen Björn Wirth (stephen.wirth@pik-potsdam.de)

The copyright of individual parts of the supplement might differ from the article licence.

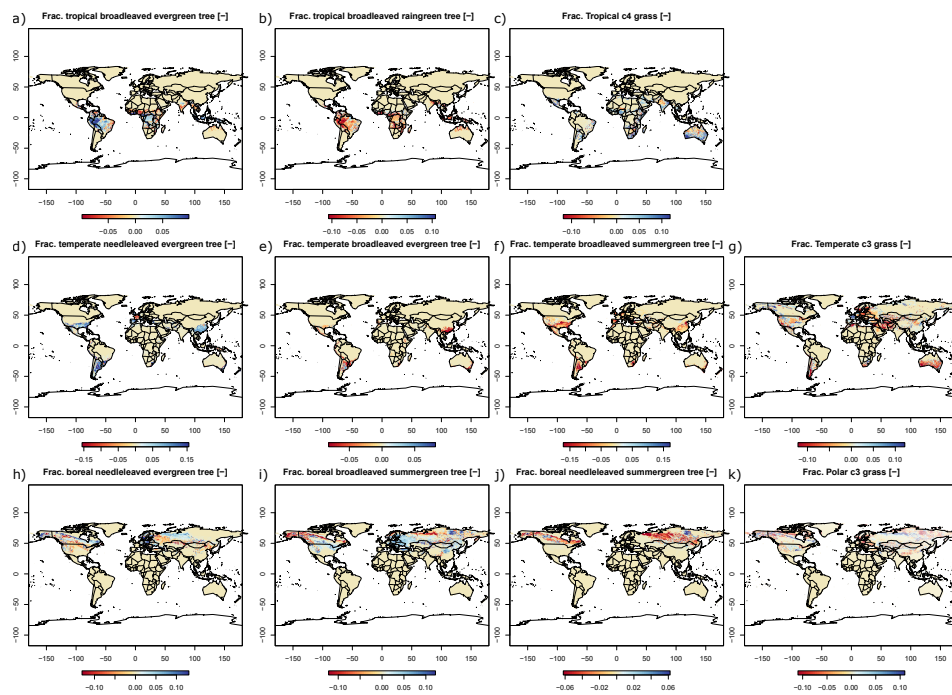


Figure S1: Difference of foliage projective cover in $\text{m}^2 \text{m}^{-2}$ between the C-costly and the Original BNF approach for dynamic land use simulation and each plant functional type (PFT).

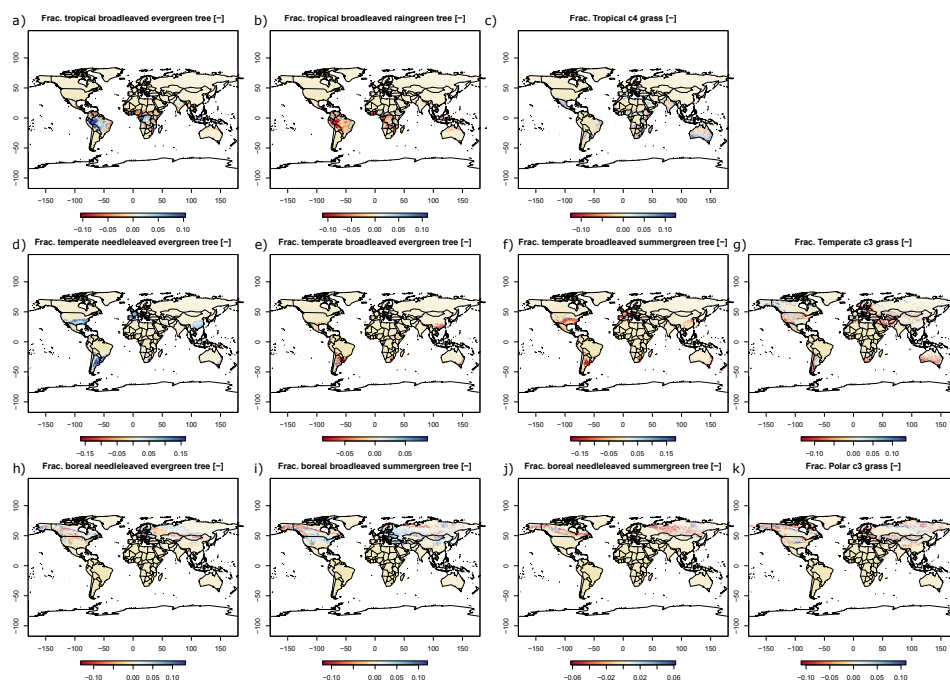


Figure S2: Difference of foliage projective cover in $\text{m}^2 \text{m}^{-2}$ between the C-costly and the Original BNF approach for potential natural vegetation simulation and each plant functional type (PFT).

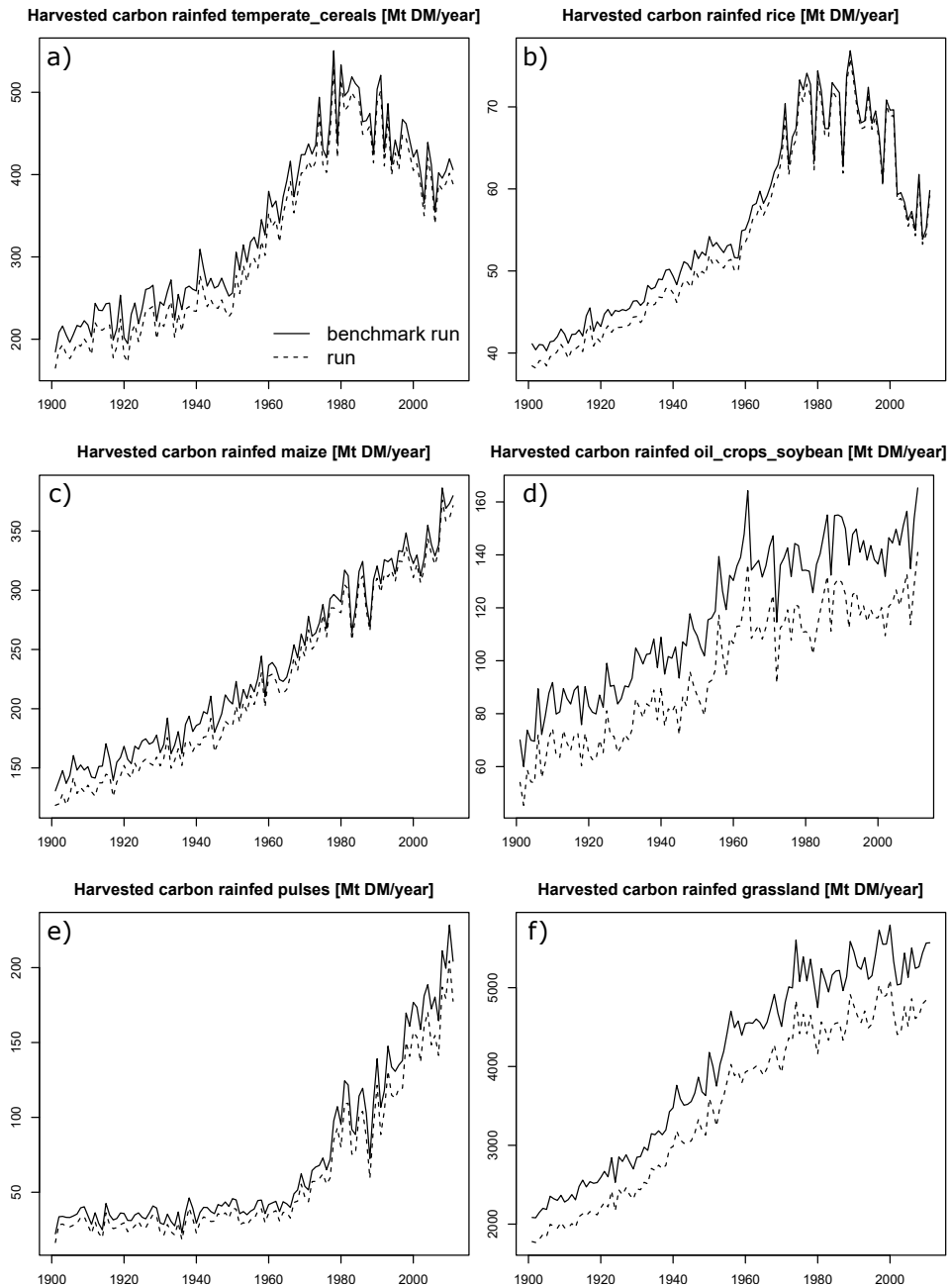


Figure S3: Global sums of harvested carbon from 1901 to 2011 for rainfed temperate cereals (a), rice (b), maize (c), soybean (d), pulses (e) and managed grasslands (f)

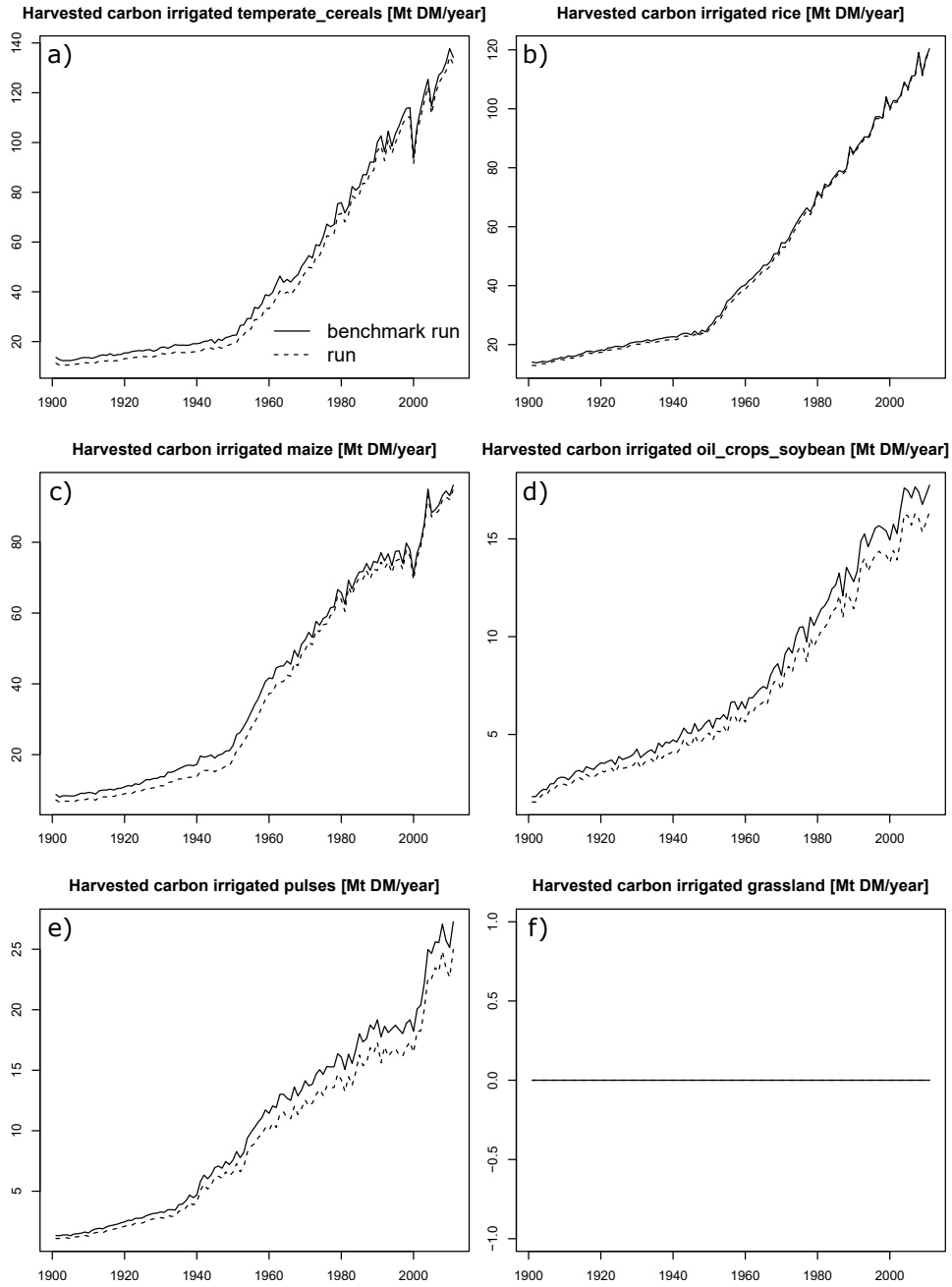


Figure S4: Global sums of harvested carbon from 1901 to 2011 for irrigated temperate cereals (a), rice (b), maize (c), soybean (d), pulses (e) and managed grasslands (f)

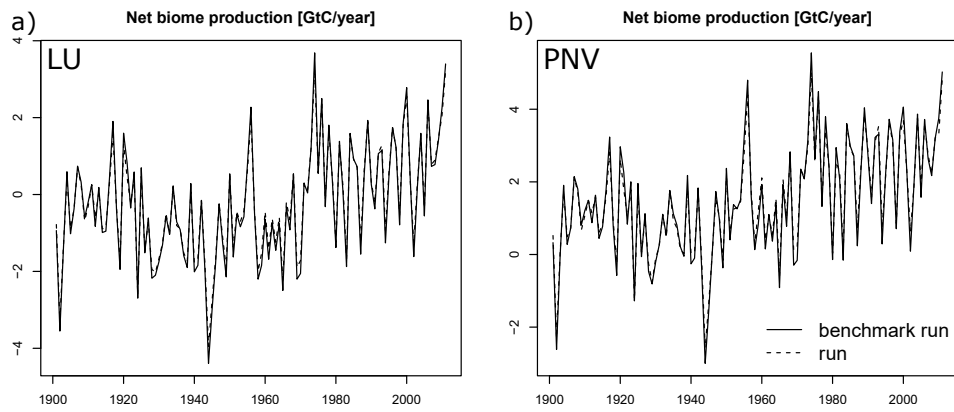


Figure S5: Global sum of net biome production from 1901 until 2011 for the dynamic land use (LU) (a) and potential natural vegetation (PNV) simulation (b)