



STORM: A simple, flexible, and parsimonious stochastic rainfall generator for simulating climate and climate change

Michael Bliss Singer^{1,3}, Katerina Michaelides^{2,3}, Daniel E. J. Hobley¹

¹School of Earth and Ocean Sciences, Cardiff University, Cardiff, United Kingdom

5 ² School of Geographical Sciences, University of Bristol, Bristol, United Kingdom

³ Earth Research Institute, University of California Santa Barbara, Santa Barbara, USA

Correspondence to: Michael Bliss Singer (bliss@eri.ucsb.edu)

10

Abstract. Assessments of water balance, watershed response, and landscape evolution to climate change require representation of spatially and temporally varying rainfall fields over a drainage basin, as well as the flexibility to simply modify key driving climate variables (evaporative demand, overall wetness, storminess). An empirical-stochastic approach to the problem of rainstorm simulation enables statistical realism and the creation of multiple ensembles that allow for statistical characterization and/or time series of the driving rainfall over a fine grid for any climate scenario. Here we provide detail on the STOchastic Rainfall Model (STORM), which uses this approach to simulate drainage basin rainfall. STORM simulates individual storms based on Monte Carlo selection from probability density functions (PDFs) of storm area, storm duration, storm intensity at the core, and storm center location. The model accounts for seasonality, orography, and the probability of storm intensity for a given storm duration. STORM also generates time series of potential evapotranspiration (PET), which are required for most physically based applications. We explain the how the model works and demonstrate its ability to simulate observed historical rainfall characteristics for a small watershed in SE Arizona. We explain the data requirements for STORM and its flexibility for simulating rainfall for various classes of climate change. Finally, we discuss several potential applications of STORM.

15

20

1 Introduction

Models of watershed response (rainfall-runoff), water balance, and landscape evolution require characterization of the driving climate, particularly spatially explicit rainfall fields over a time series. The spatial and temporal variability in water delivery to the land surface from the sky and its fate within a drainage basin is a major control on: a) the partitioning of water between infiltration and runoff, which affects flood risk and water resources (Liang et al., 1994; Beven et al., 1995; Beven and Freer, 2001; Michaelides and Wilson, 2007; Slater et al., 2015); b) water availability to vegetation, which impacts growth, survival, ecosystem health, and the carbon cycle (Rodriguez-Iturbe et al., 2001; Caylor et al., 2006; Peñuelas et al., 2011; Singer et al., 2014); and c) patterns and processes of sediment erosion and deposition, which affect the long-term evolution of landscapes (Tucker and Slingerland, 1997; Tucker and Bras, 2000; Singer, 2010; Slater and Singer, 2013; Hobley et al., 2017; Michaelides et al., 2018), as well as the redistribution of contaminants with basins (Springborn et al., 2011; Singer et al., 2013; Higson and

25

30



Singer, 2015) and the hydrologically controlled *in situ* biogeochemical processing of such contaminants into more dangerous forms (Donovan et al., 2016b, a; Singer et al., 2016).

However, generating realistic, spatially explicit rainfall fields in drainage basins is a major challenge for several reasons. First, rain gauge data are not typically available at the appropriate spatial resolutions or length of record to well characterize spatial heterogeneity. Second, rain gauge data represent only one realization of multiple potential temporal sequences and spatial patterns of rainfall. Third, global climate models (general circulation models, GCMs) operate at spatial resolutions that are too coarse to represent heterogeneous rainfall fields over small basins (Grotch and MacCracken, 1991). Fourth, while weather generators (regional circulation models, RCMs or convection permitting models, CPMs) downscale GCM output for use in dynamic simulation of weather, the model interaction is unidirectional and a regional model is wholly reliant on the boundary conditions provided by the GCM, which may not well characterize the regional dynamics of climate change (Endris et al., 2013; Prein et al., 2015; Dunning et al., 2017; Prein et al., 2017). Fifth, weather generators that operate at high spatial resolution based on the relevant physics of air mass movement and precipitation formation require detailed information on winds and storm trajectories (Skamarock et al., 2008) that are not available for most basins, and which are challenging to summarize over longer periods of time (e.g., decades).

A further consideration is that internationally agreed climate change scenarios themselves (e.g., the Intergovernmental Panel on Climate Change, IPCC) may limit our learning about the regional expression of recent and future climate change because they have already constrained the problem into covarying sets of gridded climate variables from GCM output (or re-analysis data products) based on particular global emissions scenarios. Given major challenges of GCMs to represent rainfall at the basin scale with variance in topography and orography, ensemble output of climate change projections from GCMs (e.g., CMIP5, CMIP6) are unlikely to provide good characterization of the regional or local expression of climate change (Dunning et al., 2017), even after downscaling. More importantly, GCM output and re-analysis data products do not allow for the flexibility to assess watershed responses to a wide range of potential regional climate changes that could impact runoff/flood regimes, groundwater recharge, the water balance between plants and the hydrologic cycle, and basinwide erosion and topographic development.

To fill this research gap, we have developed the STOchastic Rainfall Model (STORM), which generates time series of spatially explicit rainfall fields over a gridded domain and spatially uniform time series of evaporative demand. Together these time series can be used to drive watershed responses within dynamic rainfall-runoff models, water balances within land surface models, or runoff/erosion regimes within landscape evolution models. STORM was introduced elsewhere to explore rainfall patterns and processes within a small drainage basin in the Southwest USA (Singer and Michaelides, 2017), but here we provide the relevant detail about the model initialization, operation, and evaluation, and describe various improvements that have been made since its initial appearance in the scientific literature. Additionally, we suggest several additional modifications



to STORM that may improve its long-term utility, and we outline its potential for broader use in various hydrologic, ecohydrologic, and geomorphic applications. We also provide links to [open source code for STORM](#) in two forms (Matlab and Python), along with [sample input data and parameters](#).

5 2 Model Initialization and Operation

The STOchastic Rainfall Model (STORM) is an empirical-stochastic rainfall generator designed for simple, heuristic simulation of high resolution drainage basin rainfall under control climate conditions or under different classes of climate change. The term ‘empirical-stochastic’ (*sensu* (Singer and Dunne, 2004)) refers to Monte Carlo selection of several key
10 rainstorm characteristics from distributions that are created from historic datasets. STORM performs this multi-layer parameter selection to create sequences of spatially varying rainfall over a decadal time series. STORM output is particularly useful for simulating rainfall patterns in regions subjected to convective rainfall, where gridded datasets of precipitation do not capture the dynamic behavior (spatial and temporal variability) of rainstorms, and where GCM output is of limited utility in understanding expected changes in rainfall regimes over a basin.

15

Implementing STORM involves initialization and operation steps. Initialization involves creation of distributions of relevant variables that characterize rainstorms and the rainfall they produce over a spatial grid. STORM can be run with 1 or 2 hydrologic seasons with different rainfall characteristics. Model inputs include (**Fig.1**): annual/seasonal precipitation total, P_{Total} (**A**); storm area, which determines which grid locations in the basin are ‘hit’ by each storm (**B**); storm center location on
20 a storm grid with 500-m spacings (**C**); storm duration, P_D (**D**); rainfall intensity-duration curve number based on a family of curves from which intensity, P_I , at the storm center is determined based on the selected value of P_D (**E**); and storm spatial gradient, or the decline in P_I with distance from the storm center (**F**). An additional distribution that is required to create a complete dataset for driving other models is potential evapotranspiration (PET). The PET distribution contains historic daytime and nighttime values for the region of interest organized into data by month of the year. This distribution is sampled on a
25 twice-daily basis to characterize average daytime and nighttime evaporative demand that follows the same time signature as the gridded rainfall. PET is assumed to be spatially uniform across the watershed for any 12-hour period. Each of these initializing variable distributions can be created from data from a drainage basin, should these data be available (e.g., from one, several, or a network of rain gauges and meteorological stations), or theoretically, based on nearby basin data or generalizing assumptions. Finally, a characterizing interarrival times between storms is necessary to enable explicit watershed
30 responses to rainfall inputs (**Fig.2**). A distribution of interarrival times is assembled from historic data at all relevant gauging stations. The probability density functions (PDFs) that represent these historical data for each model variable reside external to the STORM code which calls them, and they can thus be easily modified as new information becomes available.



STORM is implemented as a function in Matlab with the following syntax:
STORM(MODE, NUMSIMS, NUMSIMYRS, SEASONS, PTOT_SCENARIO, STORMINESS_SCENARIO,
PTOT_SCENARIO2, STORMINESS_SCENARIO2, ET_SCENARIO). The input arguments are as follows. MODE refers to
whether STORM is running in validation or simulation model. NUMSIMS refers to the number of n-year Monte Carlo
5 simulations to be run. NUMSIMYRS is the number of years in each simulation. SEASONS indicates either one or two seasons
with different PDFs to sample from. PTOT_SCENARIO refers to the climate change scenario to be simulated with respect to
total annual or seasonal rainfall (wetness) in Season 1. STORMINESS_SCENARIO refers to the climate change scenario to
be simulated with respect to rainfall intensity (storminess) in Season 1. PTOT_SCENARIO2 refers to the climate change
scenario to be simulated with respect to total annual or seasonal rainfall (wetness) in Season 2. STORMINESS_SCENARIO2
10 refers to the climate change scenario to be simulated with respect to rainfall intensity (storminess) in Season 2. ET_SCENARIO
refers to climate change scenario for evapotranspiration (evaporative demand). Each of these climate change scenarios for
rainfall can be implemented as either step changes (up or down) or as temporal trends (up or down) playing out over multiple
decades, and there is full flexibility to modify the magnitude of these changes for both seasons. Currently the ET climate
change scenario only permits step changes. We describe the climate change scenarios in more detail below. Current climate
15 conditions can also be simulated for any or all of these input parameters.

In Python, STORM is implemented similarly, but with some syntax differences. It is likewise implemented as a function,
which can be simply imported from the defining script. This function is defined as:
storm(mode, numsims, numsimyrs, seasons, ptot_scenario, storminess_scenario, ptot_scenario2, storminess_scenario2,
20 ET_scenario, storminess_scaling_factor=0.05, storm_stepchange=0.25, storminess_scaling_factor2=0.05,
storm_stepchange2=0.25, ptot_scaling_factor=0.05, ptot_scaling_factor2=0.05, ET_scaling_factor=0.25). The first nine
arguments are identical to their Matlab equivalents. The remaining arguments that are supplied with default values permit
direct control through the function call of the step and gradual change values specified by the preceding scenarios (see below)
– in the Matlab version, these are controlled directly from the script defining the function. Documentation is provided as a
25 docstring to the function. The Python version of storm has a number of very common Python packages as dependencies – os,
time, numpy, datetime, matplotlib, scipy, and six. These are typically installed as standard in Python distributions. Storm in
Python also requires the pyshp package, which is readily available through package managers including pip and conda. Storm
in Python is agnostic between Python 2 and Python 3. In Python, input files (see below) are supplied as comma separated value
(csv) files, rather than .mat files, but the contents of these files is identical to that in Matlab. Where distribution objects are
30 provided in Matlab, these are provided to the Python version as simple text files specifying the key parameters of those
distributions. More details of both of these input file formats are provided in the docstrings.

To operate STORM, we simulate rainfall on a storm-by-storm basis with a temporal resolution of 1 minute at each rainfall
output grid location with a resolution of 1 km. The high spatial and temporal resolution enables rich information to be generated



from STORM, allowing for detailed assessment of spatial heterogeneity and temporal variance in rainfall fields. We first select a threshold value of P_{Total} for a simulation year from its distribution and then generate rainstorms until the median P_{Total} across all rainfall output grid locations within the basin equals or exceeds the selected threshold value of P_{Total} . Then a new simulation year begins and STORM proceeds until the length of simulation (e.g., several decades) is complete. P_{Total} can be designated as either a seasonal or annual total, depending on whether the watershed of interest is characterized by strong seasonality in rainfall. If STORM is implemented with two seasons, separate PDFs of rainstorm characteristics **A**, **B**, **D**, **E** (Figure 1) should be prepared for each season. PDFs for this this paper were fit to historical data from WGEW using the Distribution Fitting Tool within Matlab. Sample distributions are provided [here](#).

10 The results generated at each rainfall output grid location over all simulations can be statistically analyzed. STORM generates an overall rainstorm matrix that includes: Storm # (#), Storm Area (km^2), Storm Duration (min), Intensity-Duration Curve # (#), Storm Intensity at storm center (mm/hr), # Gauging (or rainfall grid) Locations Hit (#), Intensity Recession Value (mm/hr/km), Storm Total (mm), Longitude (m), Latitude (m), Year (y), and Cumulative Simulation Time (hr). STORM also generates a separate matrix of output at each rainfall grid location that includes: Year, Storm #, Local Storm Intensity (mm/hr),
15 Storm Duration (min), Local Storm Total (mm), Annual Local Cumulative Precipitation Total (mm), Interarrival Time between storms (hr), and Cumulative Simulation Time (hr). Note: simulation of interarrival times or inter-storm periods enables full water balance calculations or use of STORM output as input to other models (e.g., rainfall-runoff or land surface models).

All simulations of STORM for this paper were done using Matlab v.2017b and v.2017b on an Intel Dual Core i7-4712HQ
20 CPU @ 2.30GHz running on a Dell Inspiron laptop with 16 GB of RAM. In simulation mode, each simulation of 30 years on a grid of 128 rainfall locations within a 149 km^2 basin took ~12.5 minutes for the Control run, or ~25 seconds per simulated year. The computational time of each ensemble varies depending on the scenario. For example, the simulation of $P_{\text{Total}(+)}$ $P_{\text{I}(-)}$ took ~20 minutes per 30-y simulation (or ~40 seconds per simulated year).

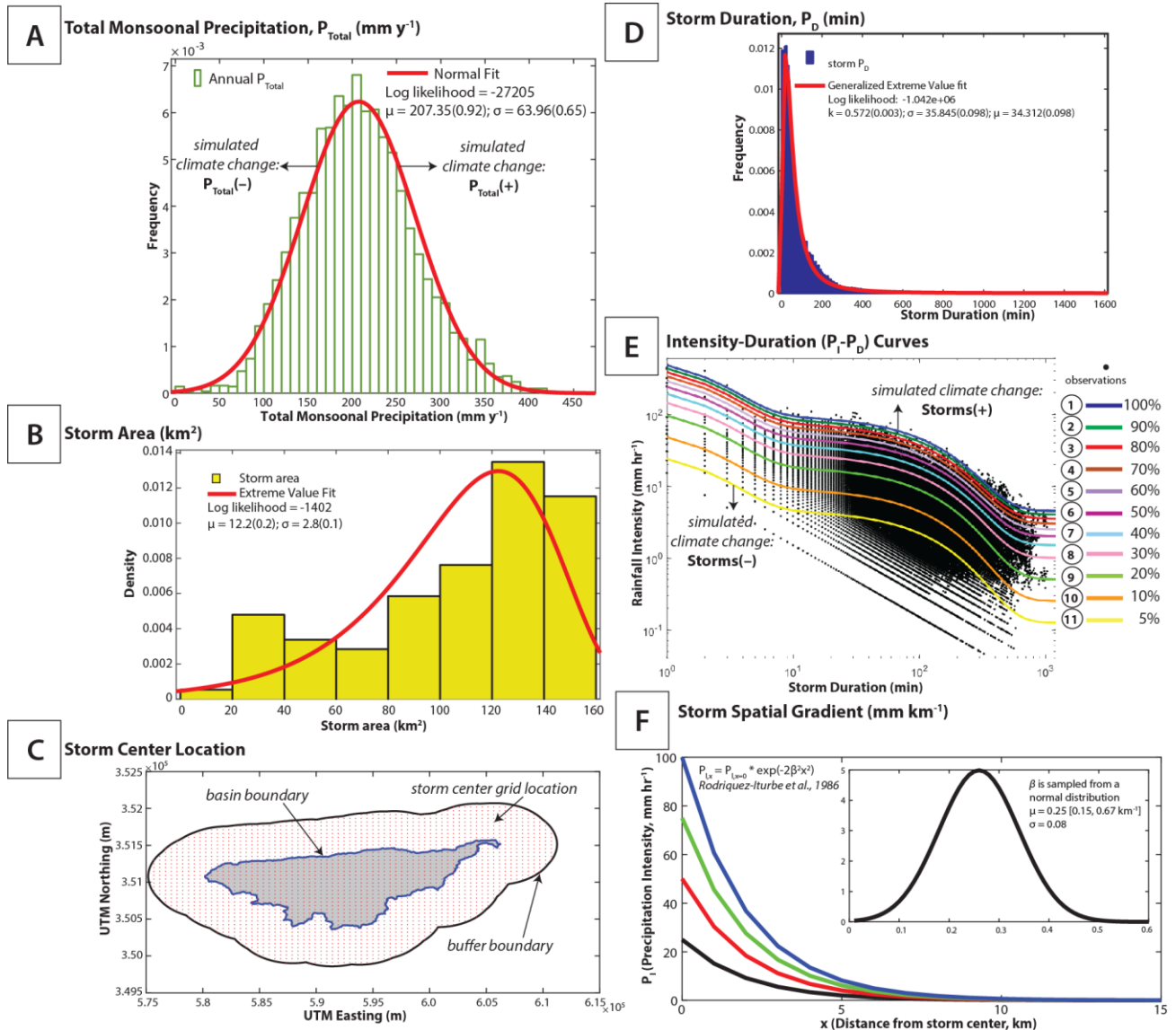


Figure 1. Components required for model initialization and simulation. For each year, a selection is made from the PDF of P_{Total} (A). Then, during each simulation year, selections are made from the following PDFs on a storm-by-storm basis: storm area (B), storm center location on a 500-m resolution UTM grid, red dots, within a 5-km buffer around the watershed boundary (C), storm P_D (D), intensity-duration (P_I - P_D) curve number (E) based on probabilistic selection favoring less intense storms (see Fig.2), and storm intensity gradient with distance from storm center (F). Note: P_I values are selected from one of the curves in (E) using a selected value of P_D from (D), and then a fuzzy tolerance within ± 5 mm/hr is applied. The general equation for the P_I - P_D curves in (E) is: $P_I = \lambda * \exp(-0.508 * P_D) + \kappa * \exp(-0.008 * P_D) + c$. Parameter values for Curve 1 are: $\lambda = 642.2$; $\kappa = 93.1$;



$c=4.5$. To model climate change as a step change in wetness (shift in total annual precipitation), we shifted the P_{Total} distribution up $P_{\text{Total}(+)}$ and down $P_{\text{Total}(-)}$ by one standard deviation without changing its shape (A). To model climate change as a step change in storminess (shift in intensity for a particular rainstorm duration), we modified the selected intensity for all storms as: $P_I \pm \Psi * P_I$, where Ψ is a fractional change in storm intensity (E). Thus, the selected intensity for all rainstorms is raised for $P_{I(+)}$ and lowered for $P_{I(-)}$. In this paper, we used $\Psi = 0.25$. The magnitude of step changes in wetness and storminess modeled in this paper were roughly based on observed decadal trends in precipitation from 1956-1999 at the Walnut Gulch Experimental Watershed (WGEW). We have also built into STORM the capability to assess trends in both P_{Total} and P_I by multiplying the selected value of either rainfall variable for each year of simulation by an annual change scalar (see text for details).

10

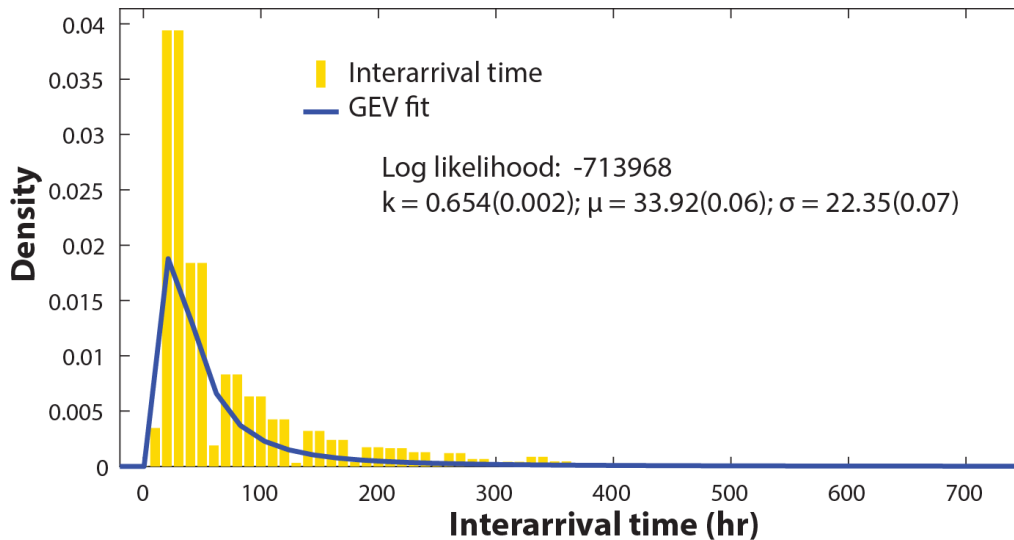


Figure 2. PDF of interarrival times which enables watershed response and water balance computations.

3 STORM Application to Walnut Gulch

15

Here we provide a few more details about how we assembled the relevant PDFs for WGEW that are shown in **Fig.1**. PDFs were generated within Matlab using the Distribution Fitting Tool, though the methods are straightforward enough to be easily applied within many data analysis software packages. To create the PDF of storm areas, we truncated the distribution of Syed et al. (2003) to exclude all rainstorms in their largest spatial bin (which comprised $\sim 1/2$ of all their rainstorms), and then fitted an extreme value distribution to the remaining storms (**Fig.1B**). Syed et al. (2003) indicated that this bin of high frequency for large spatial areas is probably an artefact of sampling such that they are overestimating storm areas due to repeat sampling of moving storms and due to the occurrence multiple simultaneous storm cells. Thus, our exclusion of this largest area bin is justified to achieve our goal of modeling individual (discrete) rainstorms and the resulting distribution has a mean storm area

20



of just under 90 km². In our initial tests of STORM, we found that the results were very sensitive to the β parameter (Eq.1; **Fig.1F**). Thus, to enable a variety of plausible storm gradients, we allowed β to vary according to a normal distribution ($\mu=0.25$, $\sigma=0.08$, truncated to the interval [0.15, 0.67 km⁻¹]), based on the range of values reported elsewhere for WGEW (Eagleson et al., 1987; Morin et al., 2005).

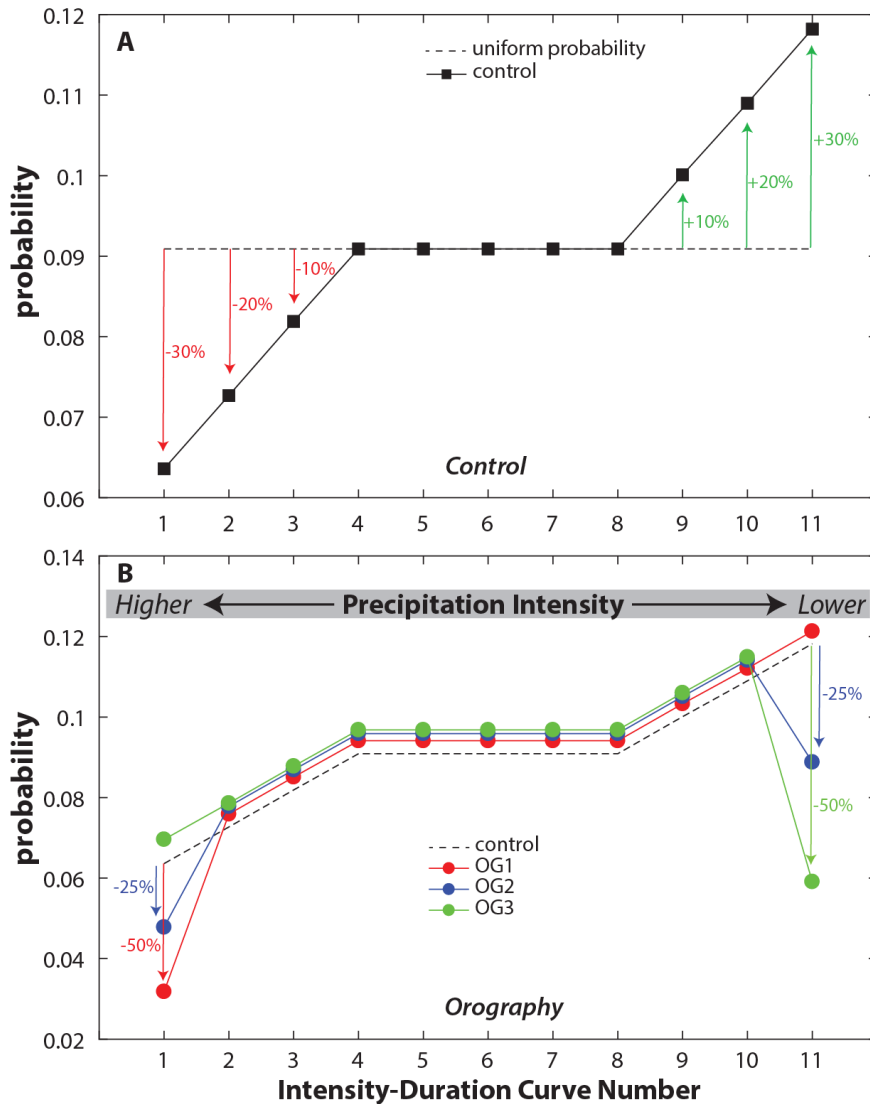
5

Intensity-duration curves were generated by first computing the maximum P_1 value for each value of P_D (per minute). We then smoothed the resulting points by LOcally WEighted Scatterplot Smoothing (LOWESS, (Cleveland, 1979)) using the ‘smooth’ function in Matlab with a span of 0.1 with a 2nd order polynomial model. Subsequently we fit a distribution to the LOWESS curve using the Curve Fitting Tool in Matlab. This resulted in the functional form of a double negative exponential curve, consistent with other datasets from dryland regions (Nicholson, 2011). Next, we maintained the same functional form of the fitted maxima curve (Curve 1) but decreased the magnitude of its coefficients (not the decay parameters) and the intercept, where relevant, by percentiles (90th, 80th, 70th, ... 10th, 5th) to generate multiple curves that occupy the full phase space of measured P_1 - P_D pairs (**Fig.1E**). The phase space of P_1 - P_D is not uniform in terms of probability of occurrence of each rainfall event. There is a tendency for more intense storms to occur less frequently than less intense ones. Therefore, each P_1 - P_D curve is assigned a probability of selection that reflects this fact, wherein the most intense curves (1-3) are assigned lower probability of selection (-30%, -20%, -10%, respectively) and the least intense ones (9-11) are assigned higher probability of selection (+30%, +20%, +10%, respectively) with respect to a hypothetical uniform distribution in curve selection probability (**Fig.3A**). In other words, rather than assigning a uniform selection probability of 0.091 to all eleven curves, we decreased the probability of selection of the top three and increased the probability of selection of the bottom three curves. This yields the adjusted curve of probabilities labeled as ‘Control’ in **Figure 3A**. The empirical curve-fitting method described here is not very elegant or generalizable to different areas, so in future versions of STORM, we will explore the use of cupolas to represent intensity-duration relationships as marginal probabilities (e.g., (Vandenbergh et al., 2011)).

STORM also incorporates orography, or the tendency for rainfall to vary with elevation, which is common in many drainage basins around the world. We simulate orography by further modifying the probability of curve number selection from the ‘Control’ curve to account for higher intensity rainfall at higher elevations (**Fig.3B**). Based on a hypsometric analysis of rainfall as a function of elevation from gauging records, we divided all rainfall grid locations into three orographic groups based on elevation (**Fig.1C** from (Singer and Michaelides, 2017)). Then we modified P_1 - P_D curve selection probabilities for each storm center accordingly. The lowest orographic group (OG1) has the selection probability of Curve 1 (most intense curve) decreased by 50%, while the mid-elevation group (OG2) has a 25% reduction of probability for Curves 1 and 11, and the highest orographic group (OG3) has a 50% reduction of probability for selecting Curve 11 (least intense curve) (**Fig.3B**). This simple procedure of increasing/decreasing the probability of storm intensity at the storm center location appears to capture the general form of orography in the test basin (**Fig.1D** from (Singer and Michaelides, 2017)). However, a more explicit or theoretical method for characterizing the effects of orographic precipitation could replace the current method in STORM. We imagine



that the cupola method mentioned above would also be suitable for characterizing orography by fitting separate cupolas to P_I - P_D data from gauges within different bands of elevation in a basin determined by hypsometry.



5 **Figure 3.** Assigned probabilities to P_I - P_D curve numbers for the various simulations. Refer to **Fig.1E** for their plotting positions. The initial case is shown in black and represents deviations of $\pm 30\%$, $\pm 20\%$, and $\pm 10\%$ probability for the first/last 3 curves to reflect the fact that larger storms are less probable than smaller ones (A). This initial case is modified as follows to account for basin orography (B). To represent orographic group 1 (OG1-lowest elevation group, **Fig.1C** from Singer and Michaelides (2017)), we decreased the probability of curve 1 by 50% and applied the difference uniformly to all other curves



such that total probability equals 1. To represent orographic group 2 (OG2-middle elevation group), we decreased the probability of curves 1 and 11 by 25% and applied the difference uniformly to all other curves. To represent orographic group 3 (OG3-highest elevation group), we decreased the probability of curve 11 by 50% and applied the probability difference uniformly to all other curves.

- 5 We also analyzed all the rainfall data from WGEW to assess the frequency of different storm intensities and found that, as expected, there is a high frequency of rainstorms with low intensity and vice versa (**Fig.4**). This validates our development of the ‘Control’ set of curve selection probabilities (**Fig.3A**).

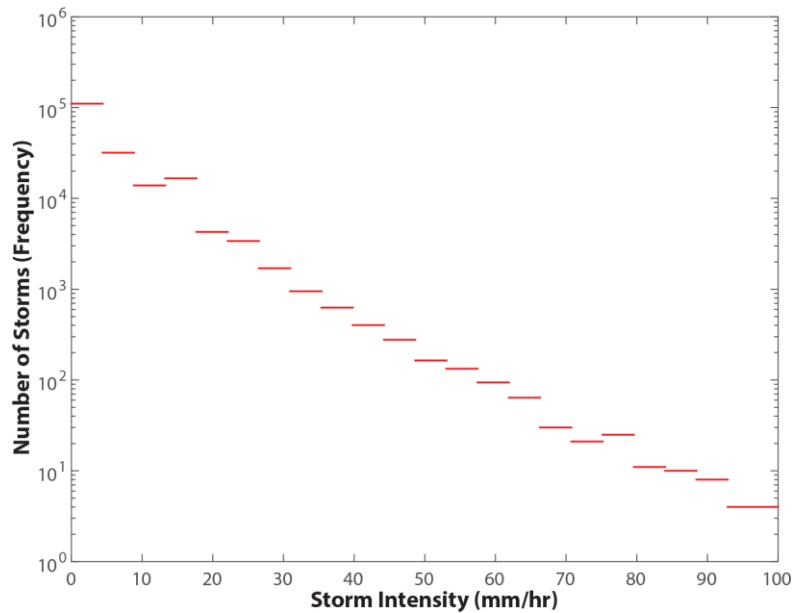


Figure 4. Data-derived number of rainstorms for various bins of storm intensity recorded at 85 WGEW gauges over 62 years.

- 10 The historical record shows that there are ~14,000 events of 10 mm/hr, ~3500 events of 25 mm/hr, ~200 events of 50 mm/hr, and ~4 events of 100 mm/hr.

In each multiyear simulation, storms of various areas cover different parts of STORM’s model domain. If we aggregate all the simulated rainfall data from each of the rainfall output grid locations, we see increasing coverage of the P_I - P_D phase space with increasing length of simulation in years (**Fig.5**). Simulations of 25 years appear to fill in much of the P_I - P_D phase space for ‘Control’ (no-climate change) conditions (**Fig.5F**). This indicates that STORM is faithfully representing the input data on intensity-duration of rainfall in a stochastic treatment over multiple decades.

- 15

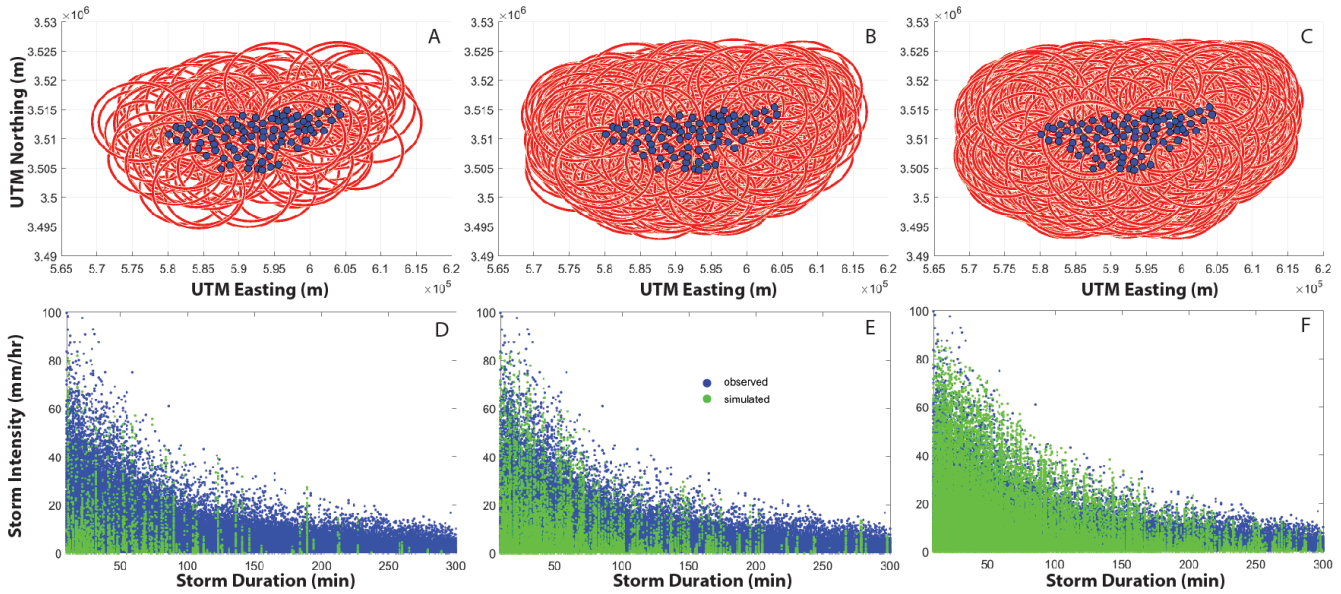


Figure 5. Maps of simulated storms (red circles) on the model grid for individual simulations over periods of 1 year (A), 5 years (B), and 25 years (C). Solid blue circles represent WGEW gauging stations. Lower panels indicate the corresponding intensity and duration values for simulated storms within the 1-y (D), 5-yr (E), and 25-yr (F) model runs for part of the intensity-duration phase space. Green dots represent simulated storms and blue dots represent gauge observations.

Finally, a plausible characterization of climate change is necessary to gain insight into the potential impacts to watershed response. In terms of precipitation, climate change can manifest in wetter or drier conditions (e.g., over a season or a year) and/or in different storm characteristics (e.g., relationship between P_1 and P_D). We therefore suggest there are two classes of climate change that affect convective precipitation and watershed response. In STORM we can simulate different classes of climate change based on very simple rules. To simulate step changes in basin wetness (annual/seasonal precipitation totals), we shift the PDF of P_{Total} up for $P_{Total}(+)$ or down for $P_{Total}(-)$ by one standard deviation, while retaining the same shape of the distribution (**Fig.1A**). Note: this truncates the left tail of original P_{Total} distribution for the scenario of $P_{Total}(-)$. To simulate step changes in storminess, we multiply the selected value of P_1 at the storm center by a scalar fraction and add (subtract) the product to the selected P_1 value to reflect increased (decreased) storminess (**Fig.1E**). Specifically, we modified the selected intensity for all storms as: $P_1 \pm \Psi * P_1$, where Ψ is a fractional step change in storm intensity. Thus, the selected intensity for all rainstorms is raised for $P_1(+)$ and lowered for $P_1(-)$. In this paper, we used a step change of $\Psi = 0.25$.

We also enable the simulation of temporal trends in rainfall. We include scalar multipliers that can be set within the STORM code, and which are used to modify the relevant value of rainfall each year. For example, to characterize a trend in wetness (total precipitation per season or year), we annually update the P_{Total} PDF by generating a new PDF of for each year after



progressively modifying the mean value of the PDF (**Fig.1A**) as: $\mu = \mu \pm \mu * \Phi$, where Φ is a fractional scaling factor that increases the PDF of P_{Total} each year of simulation. Within STORM, a similar procedure is done for trends in storminess. In this case, to characterize a positive trend in storminess (magnitude of storm intensity per season or year), we annually update the P_{Total} PDF by generating a new PDF of for each year after progressively modifying the mean value of the PDF as: $P_1 \pm \Omega$
5 * P_1 , where Ω is a fractional scaling trend that increases the selected value of storm intensity by an accumulating trend each year of simulation (i.e., the storminess trend in any year of simulation is computed as $\Omega_Y = \Omega * Y$, where Y is the simulation year). In this paper, we used initial values for both Ω and Φ of 0.05.

4 Model Output and Evaluation

It is possible to extract from STORM detailed output of rainfall characteristics for discrete rainstorms at each rainfall grid
10 location, including storm-by-storm intensity, duration, and storm totals (**Fig.6**). Thus, one can develop a localized time series of these rainstorm characteristics for different locations or sub-basins within a drainage basin. Once the simulated interarrival times between each pair of rainstorms (**Fig.2**) are added back to the time series and used alongside the simulated times series of PET (**Fig.7**), we obtain a temporally explicit climate driver that can be used to drive models of watershed response, land surface models, or to make localized water balance calculations. **Figure 8** illustrates output at a single gauging location of
15 explicit time series of storm rainfall for different climatic scenarios (see below). Note that the time series shown in **Figs.6-8** only illustrate output for a single multi-decadal simulation. The stochastic capability of STORM allows for generation of multiple n-year simulations. Thus, the STORM output for all such simulations should ideally be analyzed statistically at each representative location to produce representative time series of rainfall variables. Otherwise, they can be used as ensemble inputs to other model frameworks.

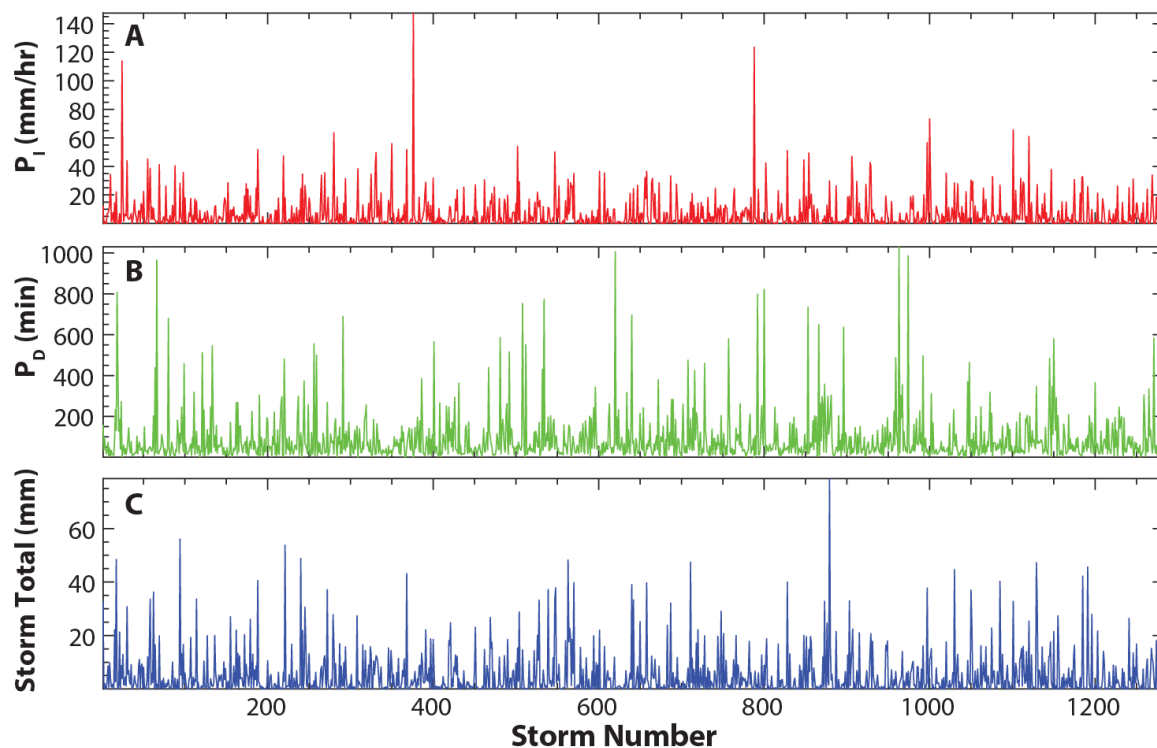


Figure 6. Illustration of the detail of model output that is generated storm-by-storm for one 30-year simulation at a single gauging (rainfall grid) location, showing rainfall intensity (A), duration (B), and storm total (C) for each storm event simulated at that gauge.

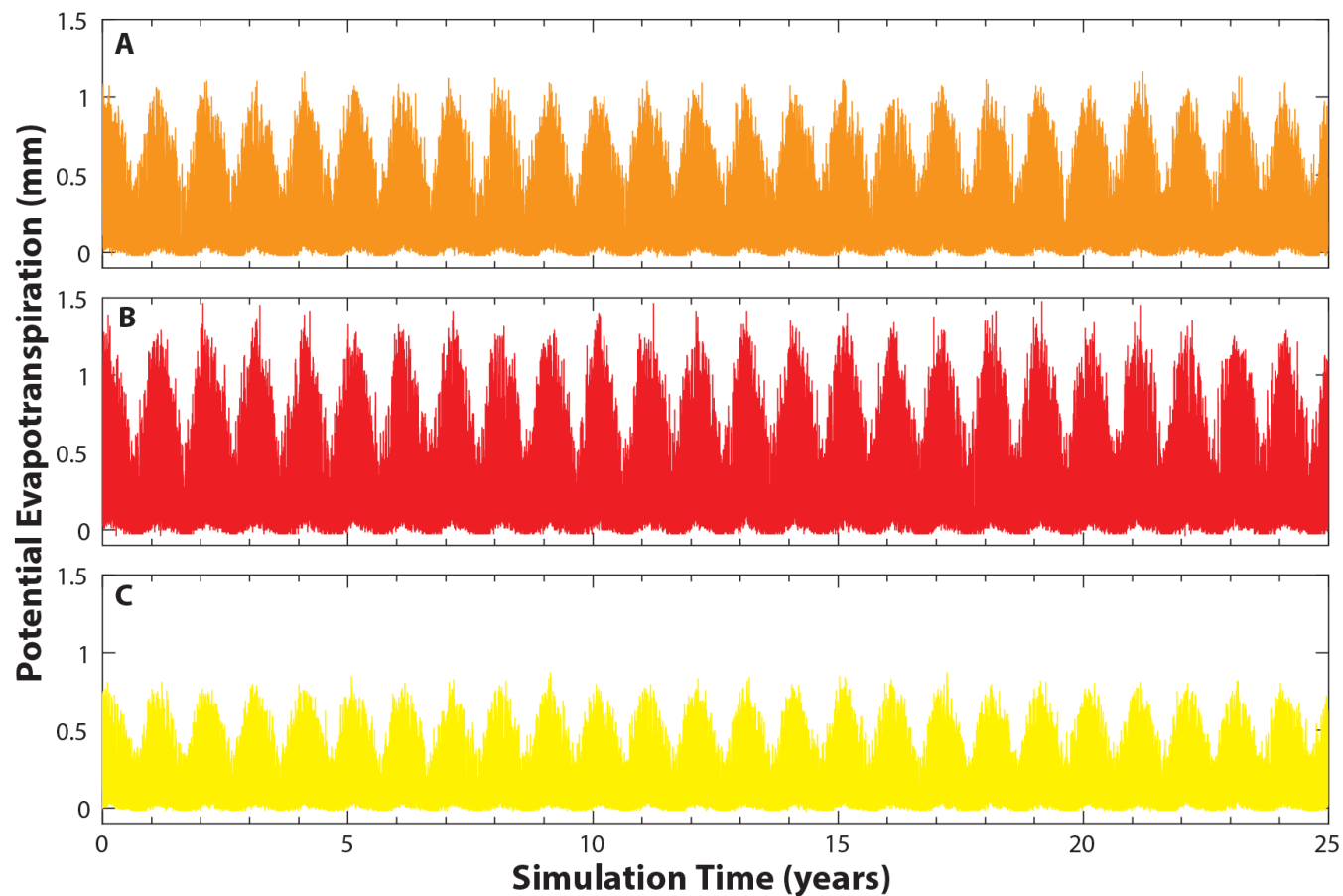


Figure 7. Illustration of simulated evapotranspiration for a 25-y simulation with two seasons under (A) the control climate change scenario (no change in PET), (B) a 25% step-change increase in PET, and (C) a 25% step-change decrease in PET.

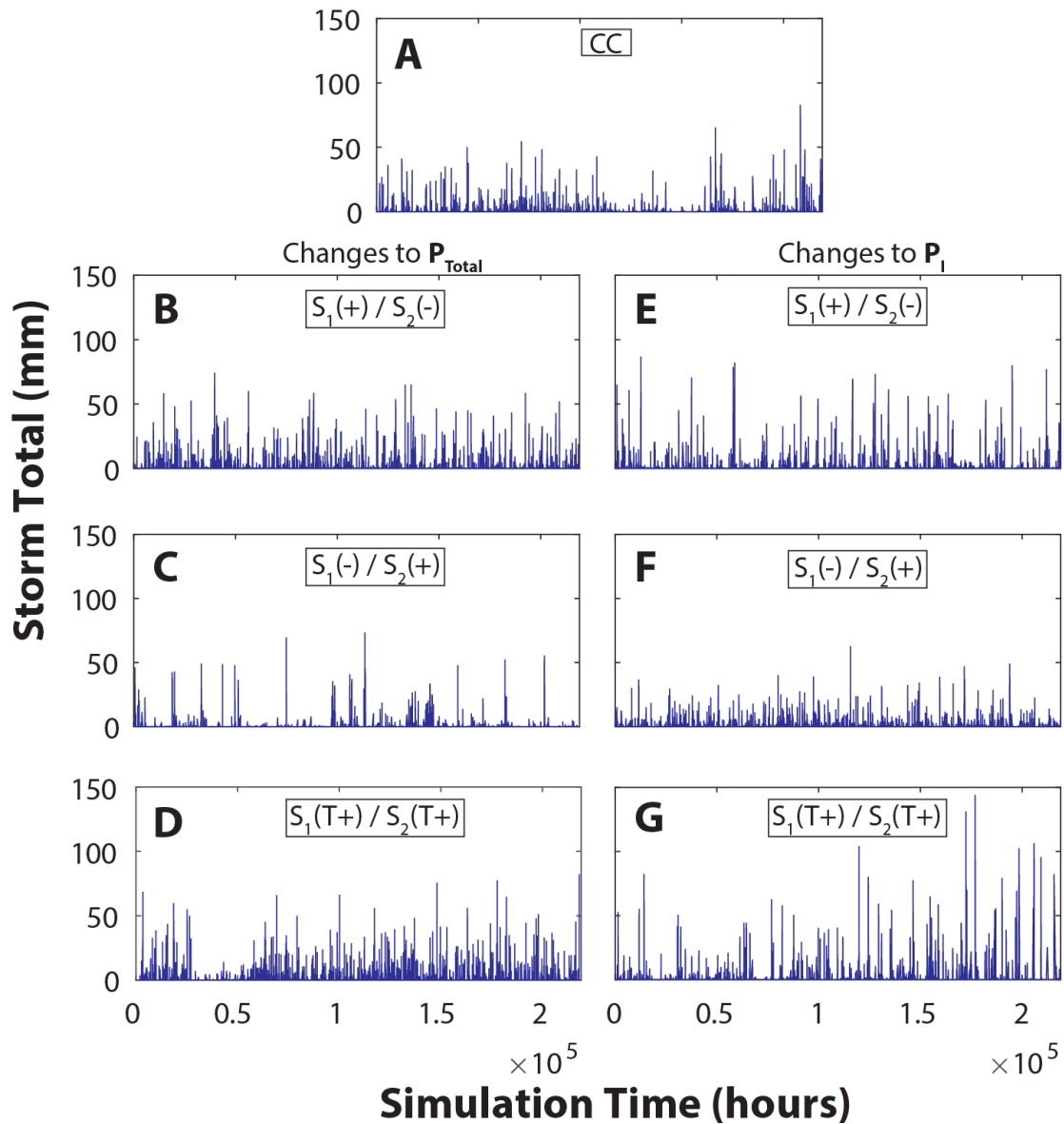


Figure 8. Illustration of simulated rainfall at one gauging location for a 25-y simulation with two seasons. The panels are: (A) control climate conditions (CC); (B) a step-change increase in P_{Total} for Season 1 and a step-change decrease in P_{Total} for Season 2 ($S_1(+)/S_2(-)$); (C) a step-change decrease in P_{Total} for Season 1 and a step-change increase in P_{Total} for Season 2 ($S_1(-)/S_2(+)$); (D) positive trends in P_{Total} for both seasons ($S_1(T+)/S_2(T+)$); (E) a step-change increase in P_1 for Season 1 and a step-change decrease in P_1 for Season 2; (F) a step-change decrease in P_1 for Season 1 and a step-change increase in P_1 for Season 2; (G) positive trends in P_1 for both seasons.



- We evaluated the model's skill at simulating observed rainfall characteristics at 85 gauges in WGEW. We selected three representative variables: number of storms per year, average storm total, and total annual precipitation. We compared observed versus simulated values of these variables at each gauging location in WGEW. **Fig.9** shows these as simulated versus observed on 1:1 plots, and relevant statistics on model skill are provided. Generally, STORM demonstrates a high level of skill at
- 5 simulating rainfall characteristics across the domain, without any model tuning. The spread of points around the 1:1 line arises from the ensemble of multi-decadal simulations, and will therefore vary from ensemble to ensemble. Generally, it is desirable to have a range of values that span the 1:1 line (above and below it). This ensures the model is generating a field of rainstorm characteristics beyond those which exist in the historical record, a notable strength of the Monte Carlo procedure implemented in STORM.
- 10 Note: the random selection of model parameters (**Figs.1 and 2**) was done using the 'random' function in Matlab (v.2016b), when sampling from a PDF (e.g., P_{Total}), and using the 'datasample' function when sampling from a vector of data points (storm center location). The random number generator seed was shuffled prior at the beginning of each Matlab session.

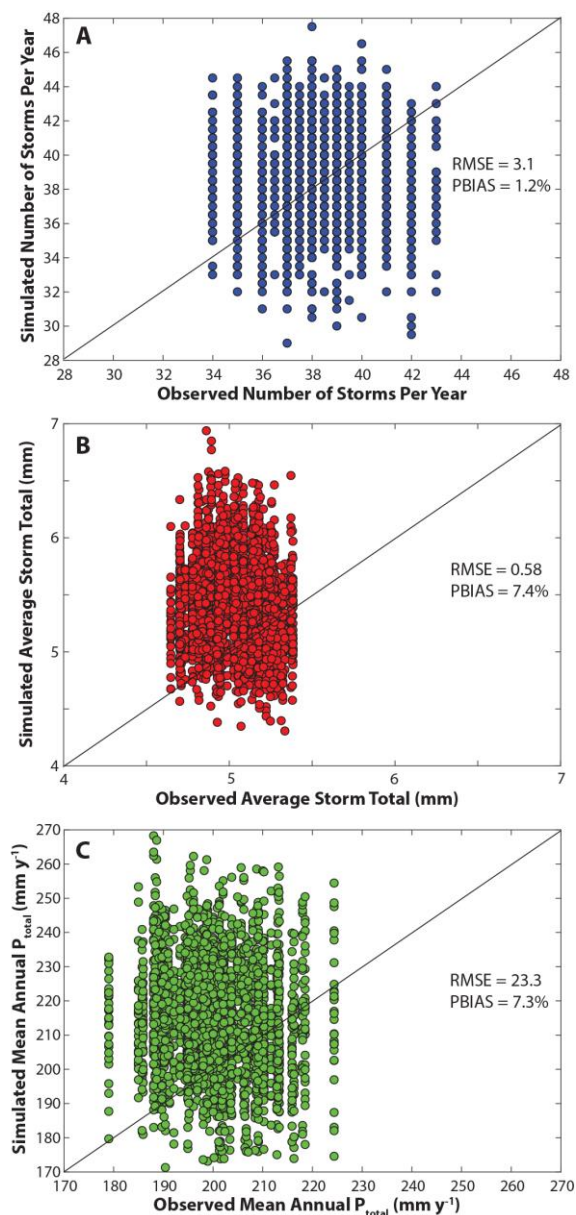


Figure 9. Observed versus modeled statistics on annual monsoon precipitation: median number of storms per year (A), median storm total (B), and mean annual P_{Total} (C). Values of RMSE and PBIAS are also shown. No model tuning was performed to achieve these results. We note that observed values of storm total and P_{Total} are slightly overpredicted by our simulations (over



these 30 test ensembles). Nevertheless, these results demonstrate a high level of model skill in reproducing a range of rainfall characteristics that span observed values without any model tuning.

5 STORM in the Context of Climate Change

Regional gridded datasets provide a picture of trends in certain climate variables that are relevant to rainstorms. **Fig.10** shows monthly output at WGEW for the 0.5° CRU TS3.24.01 dataset for temperature anomalies (A) and precipitation anomalies (B). These datasets show a significant increase in temperature of $\sim 2^{\circ}\text{C}$ over recent decades (which constitutes the period of the WGEW rainfall record), but there is no clear trend in the monthly precipitation from this dataset. The lack of a trend in monthly precipitation data contrasts with the high-resolution data from WGEW, which showed a long-term increase in P_{Total} , but with declining P_i . Such changes to the hydrology of a basin could have major implications for its runoff regime, water balance, and landscape evolution. This suggests that gridded datasets are not adequate for investigations of convective rainfall in dryland (and potentially many other) basins. This observation lends support for both detailed data analysis from dryland datasets such as WGEW, but also for modeling approaches such as STORM for exploring the potential impacts of climate change on rainfall and watershed responses.

Fig.7 shows STORM output of ET showing clear day-night variations, as well as seasonality (monthly day-night ET were sampled from historical data compiled by month). **Fig.7A** shows the control climate scenario, **Fig.7B** shows a step-change increase in ET, and **Fig.7C** shows a step-change decrease. **Fig.8** illustrates STORM rainfall output at a single gauging point in the basin as complete time series that include interarrival times, so the data can be used to drive other models. The figure also shows these time series of rainstorm totals for various climate change scenarios including control climate (A), a step change increase in total Season 1 rainfall with a step change decrease in total Season 2 rainfall (B), a step change decrease in total Season 1 rainfall with a step change increase in total Season 2 rainfall (C), positive trends in total rainfall for both seasons (D), a step change increase in Season 1 rainfall intensity with a step change decrease in Season 2 rainfall intensity (E), a step change decrease in Season 1 rainfall intensity with a step change increase in Season 2 rainfall intensity (F), and positive trends in rainfall intensity for both seasons (G). These outputs illustrate the range of capability included in STORM for simulating an array of different regional expressions of climate change that could have important implications for watershed response. In



general increases in P_{Total} tend to densify the number of rainstorms in the time series (and vice versa), while increases in storminess, tend to create more peaked rainstorm totals (c.f., **Fig.8D**, **Fig.8G**).

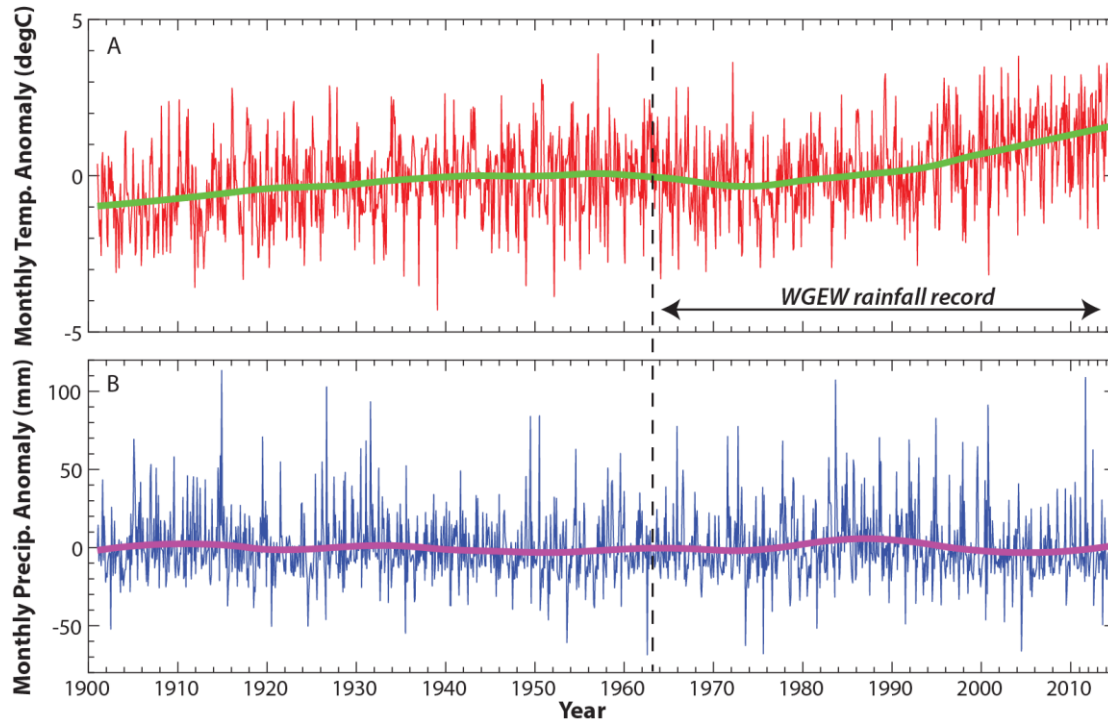


Figure 10. Monthly mean temperature (A) and monthly mean precipitation anomalies (B) for the Walnut Gulch area from the 5 0.5° CRU TS3.24.01 dataset (Harris and Jones, 2017). These plots show a recent increase in mean temperature that could influence rainfall P_I - P_D relationships, irrespective of the lack of long-term trend in precipitation totals from the gridded dataset. Curves are based on LOWESS smoothing (Cleveland, 1979) via the ‘smooth’ function in Matlab (v.2016b) using a 30% data span.

6 STORM Data Requirements

10 An important consideration of any model is the data requirements. Obviously, the less data required enables more widespread model use to do tackle environmental problems. However, on the other end of this spectrum, insufficient data can lead to poor model skill. Thus, we aimed to strike a balance that would enable widespread use of STORM with limited data. In terms of storm event rainfall data, we investigated how much rain gauge data is required by STORM to well characterize the historical phase space of rainfall characteristics. For WGEW, we plotted event rainfall intensity versus duration for 100% of the available 15 data, 50%, 25%, 10%, 5%, and 1% (**Fig.11**). This analysis shows that even at 1% of the available data ($n=1,851$), the P_I - P_D



phase space is still clearly delineated, allowing for development of the necessary P_I - P_D curves (**Fig.1E**). This suggests one could use data from a basin with only one or several rain gauges that have collected event rainfall for a few decades.

Another important data requirement in STORM is a PDF of storm areas (**Fig.1B**). This may be a more challenging PDF to develop due to limited data. Options here include analyzing spatial statistics on discrete storms from a network of rain gauges (e.g., (Syed et al., 2003)), analyzing storm characteristics from rainfall radar images (e.g., (Peleg and Morin, 2014)), or developing a hypothetical distribution based on regional understanding of mapped rainstorms (e.g., from hyetographs).

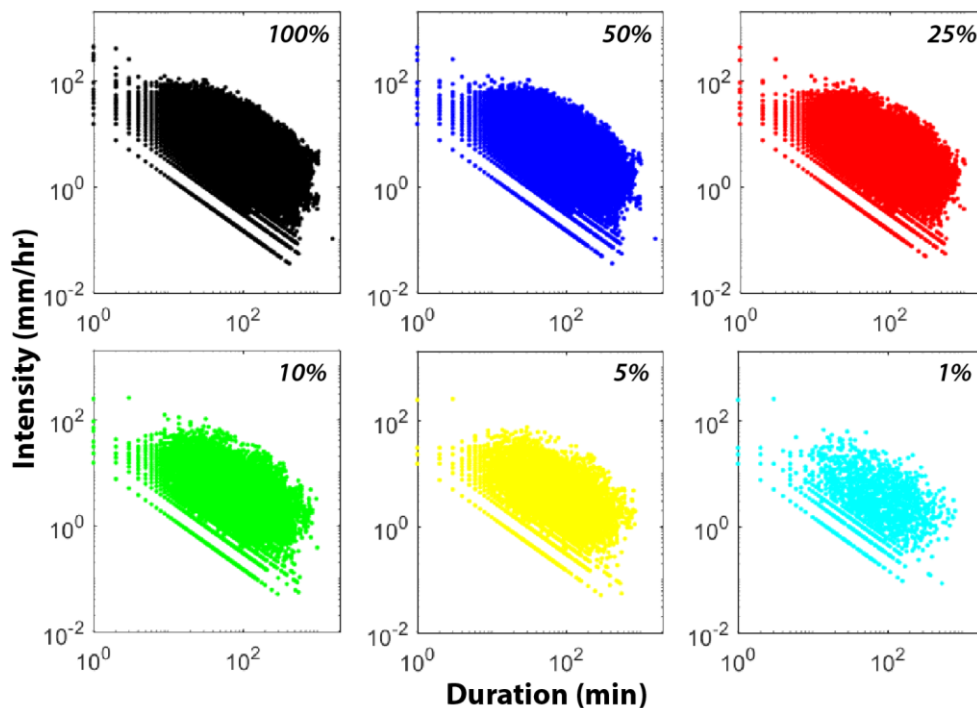


Figure 11. Illustration of the limited sensitivity of STORM to the quantity of input data. Plots of P_I versus P_D for various percentages of the complete dataset (indicated at the upper right of each subplot) show that even when only 5% of the original gauge data are included, the P_I - P_D phase space for the complete dataset is still broadly defined. The number of data points declines across these subpanels from 185,109 (100%) to 1,851 (1%). These factors indicate that STORM could be reasonably applied in a basin with dramatically less available gauging data, if other storm characteristics can be constrained by other means.



7 Extension/Modification of STORM for Additional Applications

For many applications, a complete accounting of the water balance between precipitation, evapotranspiration, and infiltration is required. Specifically, closing the local water balance requires quantifying the evaporative demand and the length of inter-storm periods, which enable drainage and drying of soil layers. These factors affect the watershed response to subsequent rainfall events. In order to characterize these aspects, we have modified STORM from its original capability (Singer and Michaelides, 2017) to include several new features. First, we have added a PDF of inter-storm periods that is sampled randomly after each storm event. The addition of these inter-storm periods changes STORM output into time series that reflect real time at the Earth's surface (e.g., **Fig.8**). Second, we have assembled a PDF of potential evapotranspiration based on measurements of temperature and relative humidity, metrics which are readily available over multiple scales (**Fig.7**). Third, we implemented seasonality in rainfall to enable simulations over a single season or year, or over two seasons with distinct differences in precipitation characteristics (distinct PDFs of rainfall in summer compared to winter). The WGEW example implemented for illustration of the model here is one such basin with a strong monsoon season that produces a high percentage of the annual rain and most of the runoff, compared with the winter season dominated by weak frontal storms. These improvements to STORM now make it suitable as a climate driver of other watershed response models that simulate hydrology between slopes and channels (surface runoff, infiltration, streamflow) (Michaelides and Wainwright, 2002; Michaelides and Wilson, 2007; Michaelides and Wainwright, 2008), groundwater recharge during and after rainfall events (Beven and Freer, 2001), and interactions between streamflow and alluvial aquifers (Evans et al., 2018). It also enables STORM to be useful in water balance models (e.g., Land Surface Models) to assess water availability to plants through dynamic ecohydrological simulation of plant-climate interactions and water utilization (Caylor et al., 2006; Laio et al., 2006; D'Odorico et al., 2007), as well as energy/carbon fluxes between the land surface and the atmosphere (Bonan, 1996; Best et al., 2011). Finally, STORM can also be used to drive geomorphic models that characterize erosion and deposition processes within drainage basins in response to sequences of rainfall and runoff (Michaelides et al., 2009; Michaelides et al., 2012; Michaelides and Martin, 2012; Michaelides and Singer, 2014), and even landscape evolution models that simulate landform development over longer timescales (Tucker and Hancock, 2010; Hobley et al., 2017). Coupling STORM to such models would enable a wide range of interdisciplinary scientists to investigate key problems in the environment that have their origin in the climate system. These range from which water sources are used by plants (Dawson and Ehleringer, 1991; Singer et al., 2014; Evaristo et al., 2015; Sargeant and Singer, 2016; Evaristo and McDonnell, 2017) to what is the dominant source and timing of groundwater recharge (Scanlon et al., 2006; Wheeler et al., 2010; Cuthbert et al., 2016) to the role of climate in shaping landscape morphology (Tucker and Slingerland, 1997; Tucker and Bras, 2000; Singer and Michaelides, 2014; Michaelides et al., 2018). A version of STORM is



under active development in the modular open-source surface process modelling framework Landlab (Hobley et al., 2017), in part to facilitate such future work.

8 Code and sample data

Both Matlab and Python versions and sample data can be found [here](#).

5 9 Competing interests

The authors declare no competing interests.

10 Disclaimer

The authors take no responsibility for the use or misuse of the provided code.

11 Acknowledgements

- 10 Singer received funding from the US National Science Foundation Hydrologic Sciences (EAR#1700555), Geography and Spatial Sciences Program (BCS#1660490), and the US Department of Defense's Strategic Environmental Research and Development Program (#RC18-C2-1006).

References

- 15 Best, M. J., Pryor, M., Clark, D. B., Rooney, G. G., Essery, R. L. H., Menard, C. B., Edwards, J. M., Hendry, M. A., Porson, A., Gedney, N., Mercado, L. M., Sitch, S., Blyth, E., Boucher, O., Cox, P. M., Grimmond, C. S. B., Harding, R. J., Best, M. J., Pryor, M., Clark, D. B., Rooney, G. G., Essery, R. L. H., Menard, C. B., Edwards, J. M., Hendry, M. A., Porson, A., Gedney, N., Mercado, L. M., Sitch, S., Blyth, E., Boucher, O., Cox, P. M., Grimmond, C. S. B., and Harding, R. J., 2011, The Joint UK Land Environment Simulator (JULES), Model Description - Part 1: Energy and
20 Water Fluxes: Geoscientific Model Development, v. 4, no. 3, p. 677-699.
- Beven, K., and Freer, J., 2001, A dynamic TOPMODEL: Hydrological Processes, v. 15, no. 10, p. 1993-2011.
- Beven, K., Lamb, R., Quinn, P., Romanowicz, R., and Freer, J., 1995, Topmodel: Computer models of watershed hydrology, v. 18, p. 627-668.
- Bonan, G. B., 1996, Land surface model (LSM version 1.0) for ecological, hydrological, and atmospheric studies: Technical description and user's guide. Technical note, PB--97-131494.
- 25 Caylor, K. K., D'Odorico, P., and Rodriguez-Iturbe, I., 2006, On the ecohydrology of structurally heterogeneous semiarid landscapes: Water Resources Research, v. 42, no. 7.
- Cleveland, W. S., 1979, Robust locally weighted regression and smoothing scatterplots: J. Amer. Stat. Assoc., v. 74, p. 829-836.



- Cuthbert, M. O., Acworth, R. I., Andersen, M. S., Larsen, J. R., McCallum, A. M., Rau, G. C., and Tellam, J. H., 2016, Understanding and quantifying focused, indirect groundwater recharge from ephemeral streams using water table fluctuations: *Water Resources Research*, v. 52, no. 2, p. 827-840.
- 5 D'Odorico, P., Caylor, K., Okin, G. S., and Scanlon, T. M., 2007, On soil moisture-vegetation feedbacks and their possible effects on the dynamics of dryland ecosystems: *Journal of Geophysical Research-Biogeosciences*, v. 112, no. G4, p. 10.
- Dawson, T. E., and Ehleringer, J. R., 1991, Streamside trees that do not use stream water: *Nature*, v. 350, no. 6316, p. 335-337.
- 10 Donovan, P. M., Blum, J. D., Singer, M. B., Marvin-DiPasquale, M., and Tsui, M. T. K., 2016a, Isotopic Composition of Inorganic Mercury and Methylmercury Downstream of a Historical Gold Mining Region: *Environmental Science & Technology*, v. 50, no. 4, p. 1691-1702.
- , 2016b, Methylmercury degradation and exposure pathways in streams and wetlands impacted by historical mining: *Science of The Total Environment*, v. 568, p. 1192-1203.
- 15 Dunning, C. M., Allan, R. P., and Black, E., 2017, Identification of deficiencies in seasonal rainfall simulated by CMIP5 climate models: *Environmental Research Letters*, v. 12, no. 11, p. 114001.
- Eagleson, P. S., Fennessey, N. M., Qinliang, W., and Rodriguez-Iturbe, I., 1987, Application of spatial Poisson models to air mass thunderstorm rainfall: *Journal of Geophysical Research: Atmospheres*, v. 92, no. D8, p. 9661-9678.
- Endris, H. S., Omondi, P., Jain, S., Lennard, C., Hewitson, B., Chang'a, L., Awange, J. L., Dosio, A., Ketiem, P., Nikulin, G., Panitz, H.-J., Büchner, M., Stordal, F., and Tazalika, L., 2013, Assessment of the Performance of CORDEX
- 20 Regional Climate Models in Simulating East African Rainfall: *Journal of Climate*, v. 26, no. 21, p. 8453-8475.
- Evans, C. M., Dritschel, D. G., and Singer, M. B., 2018, Modeling Subsurface Hydrology in Floodplains: *Water Resources Research*, p. n/a-n/a.
- Evaristo, J., Jasechko, S., and McDonnell, J. J., 2015, Global separation of plant transpiration from groundwater and streamflow: *Nature*, v. 525, no. 7567, p. 91-94.
- 25 Evaristo, J., and McDonnell, J. J., 2017, Prevalence and magnitude of groundwater use by vegetation: a global stable isotope meta-analysis: *Scientific Reports*, v. 7, p. 44110.
- Grotch, S. L., and MacCracken, M. C., 1991, The Use of General Circulation Models to Predict Regional Climatic Change: *Journal of Climate*, v. 4, no. 3, p. 286-303.
- 30 Harris, I. C., and Jones, P. D., 2017, CRU TS3.24: Climatic Research Unit (CRU) Time-Series (TS) Version 3.24 of High Resolution Gridded Data of Month-by-month Variation in Climate (Jan. 1901- Dec. 2015). , in *University of East Anglia Climatic Research Unit, C. f. E. D. A., ed.*
- Higson, J. L., and Singer, M. B., 2015, The impact of the streamflow hydrograph on sediment supply from terrace erosion: *Geomorphology*, v. 248, p. 475-488.
- 35 Hogley, D. E. J., Adams, J. M., Nudurupati, S. S., Hutton, E. W. H., Gasparini, N. M., Istanbuluoğlu, E., and Tucker, G. E., 2017, Creative computing with Landlab: an open-source toolkit for building, coupling, and exploring two-dimensional numerical models of Earth-surface dynamics: *Earth Surf. Dynam.*, v. 5, no. 1, p. 21-46.
- Laio, F., D'Odorico, P., and Ridolfi, L., 2006, An analytical model to relate the vertical root distribution to climate and soil properties: *Geophysical Research Letters*, v. 33, no. 18, p. n/a-n/a.
- 40 Liang, X., Lettenmaier, D. P., Wood, E. F., and Burges, S. J., 1994, A simple hydrologically based model of land surface water and energy fluxes for general circulation models: *Journal of Geophysical Research: Atmospheres*, v. 99, no. D7, p. 14415-14428.
- Michaelides, K., Hollings, R., Singer, M. B., Nichols, M. H., and Nearing, M. A., 2018, Spatial and temporal analysis of hillslope-channel coupling and implications for the longitudinal profile in a dryland basin: *Earth Surface Processes and Landforms*.
- 45 Michaelides, K., Lister, D., Wainwright, J., and Parsons, A. J., 2009, Vegetation controls on small-scale runoff and erosion dynamics in a degrading dryland environment: *Hydrological Processes*, v. 23, no. 11, p. 1617-1630.
- Michaelides, K., Lister, D., Wainwright, J., and Parsons, A. J., 2012, Linking runoff and erosion dynamics to nutrient fluxes in a degrading dryland landscape: *J. Geophys. Res.*, v. 117, p. G00N15.
- 50 Michaelides, K., and Martin, G. J., 2012, Sediment transport by runoff on debris-mantled dryland hillslopes: *J. Geophys. Res.*, v. 117, no. F3, p. F03014.



- Michaelides, K., and Singer, M. B., 2014, Impact of coarse sediment supply from hillslopes to the channel in runoff-dominated, dryland fluvial systems: *Journal of Geophysical Research: Earth Surface*, v. 119, no. 6, p. 2013JF002959.
- 5 Michaelides, K., and Wainwright, J., 2002, Modelling the effects of hillslope-channel coupling on catchment hydrological response: *Earth Surface Processes and Landforms*, v. 27, no. 13, p. 1441-1457.
- , 2008, Internal testing of a numerical model of hillslope-channel coupling using laboratory flume experiments: *Hydrological Processes*, v. 22, no. 13, p. 2274-2291.
- Michaelides, K., and Wilson, M. D., 2007, Uncertainty in predicted runoff due to patterns of spatially variable infiltration: *Water Resources Research*, v. 43, no. 2, p. 14.
- 10 Morin, E., Goodrich, D. C., Maddox, R. A., Gao, X., Gupta, H. V., and Sorooshian, S., 2005, Rainfall modeling for integrating radar information into hydrological model: *Atmospheric Science Letters*, v. 6, no. 1, p. 23-30.
- Nicholson, S. E., 2011, *Dryland Climatology*, Cambridge, Cambridge University Press, 528 p.:
- Peleg, N., and Morin, E., 2014, Stochastic convective rain-field simulation using a high-resolution synoptically conditioned weather generator (HiReS-WG): *Water Resources Research*, v. 50, no. 3, p. 2124-2139.
- 15 Peñuelas, J., Canadell, J. G., and Ogaya, R., 2011, Increased water-use efficiency during the 20th century did not translate into enhanced tree growth: *Global Ecology and Biogeography*, v. 20, no. 4, p. 597-608.
- Prein, A. F., Langhans, W., Fosser, G., Ferrone, A., Ban, N., Goergen, K., Keller, M., Tölle, M., Gutjahr, O., Feser, F., Brisson, E., Kollet, S., Schmidli, J., van Lipzig, N. P. M., and Leung, R., 2015, A review on regional convection-permitting climate modeling: Demonstrations, prospects, and challenges: *Reviews of Geophysics*, v. 53, no. 2, p. 323-361.
- 20 Prein, A. F., Liu, C., Ikeda, K., Trier, S. B., Rasmussen, R. M., Holland, G. J., and Clark, M. P., 2017, Increased rainfall volume from future convective storms in the US: *Nature Climate Change*, v. 7, no. 12, p. 880-884.
- Rodriguez-Iturbe, I., Porporato, A., Laio, F., and Ridolfi, L., 2001, Plants in water-controlled ecosystems: active role in hydrologic processes and response to water stress: I. Scope and general outline: *Advances in Water Resources*, v. 24, no. 7, p. 695-705.
- 25 Sargeant, C. I., and Singer, M. B., 2016, Sub-annual variability in historical water source use by Mediterranean riparian trees: *Ecohydrology*, v. 9, no. 7, p. 1328-1345.
- Scanlon, B. R., Keese, K. E., Flint, A. L., Flint, L. E., Gaye, C. B., Edmunds, W. M., and Simmers, I., 2006, Global synthesis of groundwater recharge in semiarid and arid regions: *Hydrological Processes*, v. 20, no. 15, p. 3335-3370.
- 30 Singer, M. B., 2010, Transient response in longitudinal grain size to reduced gravel supply in a large river: *Geophysical Research Letters*, v. 37, no. 18, p. L18403, doi:10.1029/2010GL044381.
- Singer, M. B., Aalto, R., James, L. A., Kilham, N. E., Higson, J. L., and Ghoshal, S., 2013, Enduring legacy of a toxic fan via episodic redistribution of California gold mining debris: *Proceedings of the National Academy of Sciences*, v. 110, no. 46, p. 18436-18441.
- 35 Singer, M. B., and Dunne, T., 2004, An empirical-stochastic, event-based model for simulating inflow from a tributary network: Theoretical framework and application to the Sacramento River basin, California: *Water Resources Research*, v. 40, p. W07506, doi:10.1029/2003WR002725.
- Singer, M. B., Harrison, L. R., Donovan, P. M., Blum, J. D., and Marvin-DiPasquale, M., 2016, Hydrologic indicators of hot spots and hot moments of mercury methylation potential along river corridors: *Science of The Total Environment*, v. 568, p. 697-711.
- 40 Singer, M. B., and Michaelides, K., 2014, How is topographic simplicity maintained in ephemeral dryland channels?: *Geology*, v. 42, no. 12, p. 1091-1094.
- Singer, M. B., and Michaelides, K., 2017, Deciphering the expression of climate change within the Lower Colorado River basin by stochastic simulation of convective rainfall: *Environmental Research Letters*, v. 12.
- 45 Singer, M. B., Sargeant, C. I., Piégay, H., Riquier, J., Wilson, R. J. S., and Evans, C. M., 2014, Floodplain ecohydrology: Climatic, anthropogenic, and local physical controls on partitioning of water sources to riparian trees: *Water Resources Research*, v. 50, no. 5, p. 4490-4513.



- Skamarock, W. C., Klemp, J. B., Dudhia, J., Gill, D. O., Barker, D. M., Duda, M. G., Huang, X.-Y., Wang, W., and J. G. Powers, 2008, A Description of the Advanced Research WRF Version 3, NCAR Tech. Note NCAR/TN-475+STR, 113 pp, doi:10.5065/D68S4MVH.
- 5 Slater, L. J., and Singer, M. B., 2013, Imprint of climate and climate change in alluvial riverbeds: Continental United States, 1950-2011: *Geology*, v. 41, no. 5, p. 595-598.
- Slater, L. J., Singer, M. B., and Kirchner, J. W., 2015, Hydrologic versus geomorphic drivers of trends in flood hazard: *Geophysical Research Letters*, p. 2014GL062482.
- Springborn, M., Singer, M. B., and Dunne, T., 2011, Sediment-adsorbed total mercury flux through Yolo Bypass, the primary floodway and wetland in the Sacramento Valley, California: *Science of the Total Environment*, v. 412-413, p. 203-213.
- 10 Syed, K., Goodrich, D. C., Myers, D., and Sorooshian, S., 2003, Spatial characteristics of thunderstorm rainfall fields and their relation to runoff: *Journal of Hydrology*, v. 271, p. 1-21.
- Tucker, G. E., and Bras, R. L., 2000, A stochastic approach to modeling the role of rainfall variability in drainage basin evolution: *Water Resources Research*, v. 36, no. 7, p. 1953-1964.
- 15 Tucker, G. E., and Hancock, G. R., 2010, Modelling landscape evolution: *Earth Surface Processes and Landforms*, v. 35, no. 1, p. 28-50.
- Tucker, G. E., and Slingerland, R., 1997, Drainage basin responses to climate change: *Water Resources Research*, v. 33, no. 8, p. 2031-2047.
- Vandenberghe, S., Verhoest, N. E. C., Onof, C., and De Baets, B., 2011, A comparative copula-based bivariate frequency analysis of observed and simulated storm events: A case study on Bartlett-Lewis modeled rainfall: *Water Resources Research*, v. 47, no. 7, p. n/a-n/a.
- 20 Wheater, H. S., Mathias, S. A., and X. Li, 2010, *Groundwater Modelling in Arid and Semi-Arid Areas*, Cambridge, UK, Cambridge Univ. Press.